

始





THE JAPAN AND RUSSIAN WAR

每月三回
二十日發行

特 617
155

城

大本營幕僚御藏版
從軍寫真班攝影

日露戰爭紀念帖



第六輯

VOI., 6.

行發社會資合刷印版製具寫西關



The transport of our provisions on the High way of Kinchau.

There are two ways that runs to Kinchau. One from Kaiping to Port Arthur and the Eastern China Railway lies along it, and another from Pitzuwo to Kinchau. Shihsanlitai, where the Russians resisted desperately before the battle of Kinchau, belongs to the former road. Above picture is the transport of our provisions taking this way to Kinchau.

送輸食糧道街州金

子魏は一ひ沿に之道鐵清東てしにのるす達に順旅りよ平蓋は一りあ二道街のふ向に州金
 圖本す屬に道街州金は子臺里三十しせ守拒が歎て於に前の撃攻州金しべる至に州金りよ窟
 りな送輸食糧の軍我るけ於に道街其ち即は



The marching of our artillery on the Hill of Taihoshang.

In Kinchau a long chain of eminences stands by the extent of an open field. So that the feature of ground forms naturally a strong place of defence at the Hill of Taihoshang. The preliminary action of the great assault of Kinchau was fought at this hill. How gallantly the movement of our artillery looks! They are going to take field to give severe firing upon the enemy.

軍進ノ兵砲我ルケ於ニ近附山尙和大

りな形地の帯一山尙和大はるせ星を險天てし伏起陵丘び延くやうや脈山てみ臨に野平州金
きしま勇どまさむ進の兵砲我りたれか開に近附此戦きべす稱もと戦前の撃攻州金

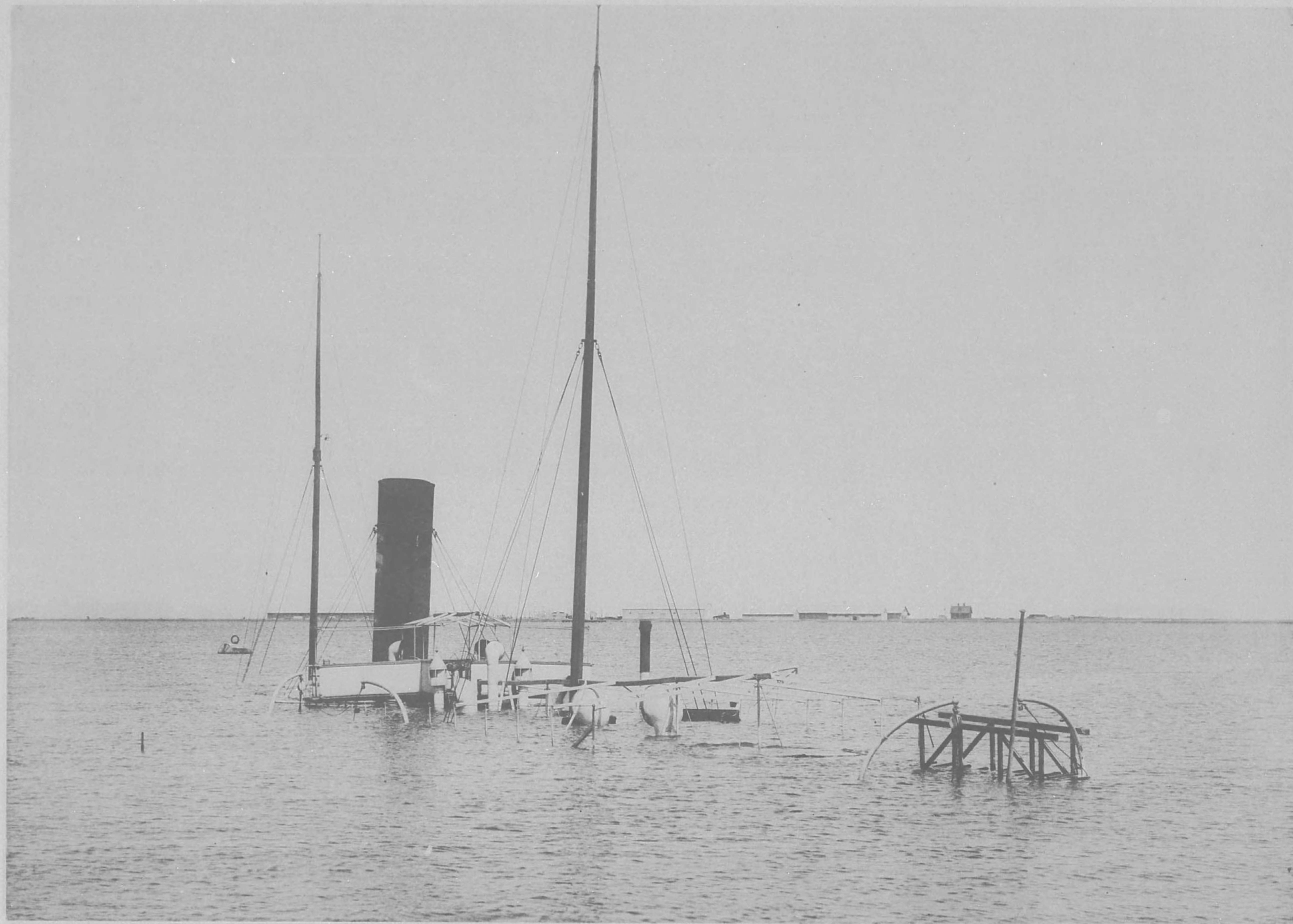


A part of the Russian forts at Nanshun.

Brave is the spirit of our young Japanese, that never be back where the Orders lead.
The Russian forts fell by their fierce assault.
Like the thunderstorm swept the enemy away.
Ah! The ruins of Nanshun. Who ever dreamed the wretched scene.

部一ノ壘砲山南

にまだ勝の兒男本日
壘砲歎しれか碎ち撃
てつ去皆塵微雷萬
やれな夢跡の山南



A merchant-vessel sunken in the dock of Dalny.

At the end of May Dalny harbour was almost occupied by our army. The official report then stated "the small bridges near the station were all destroyed. Some of the docks and jetties remain untouched but a great jetty was broken down into the water. They also sank a steamer to stop the entrance of docks". Behold! Here is a merchant-vessel showing its masts above the water surface. The Russians sank it themselves in a dock as above mentioned. What an idea rises in your mind if you see this malicious action.

船商ノ敵ルモ没沈内渠船一ニルダ

總は築港小の道端近所に告報察偵の時當りれなど所るす領占の軍我に接聞は窪泥青末月五
沈に中海てれらせ壞破に既に橋樑大とれあものもるな全完は橋樑及び渠船又れらせ壞破て
しまさあの船産敵るけ於に内渠船のこ今りわとりためしせ復沈を船汽小はに口入の渠船み
んら起想感の種一ら自よ看をさ

明治三十七年十二月七日印刷
明治三十七年十二月二十日發行
（全三冊發行）
明治三十七年十二月二十日發行

著者 久村敬次郎
發行所 大阪東區平野町四丁目六番地
關西寫真製版印刷會社出版部

印刷者 伊藤慶英
大阪東區平野町四丁目六番地

印刷所 關西寫真製版印刷會社
神戶市東區新宮三丁目番地

不
複
製

終

