

056805-000-9

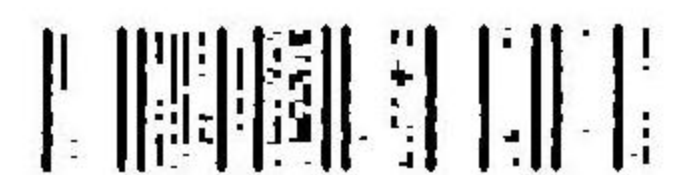
14. 6二-40

伏木測候所氣象年報 明治26年

伏木測候所

[M 2 7 ?]

CAN-0471

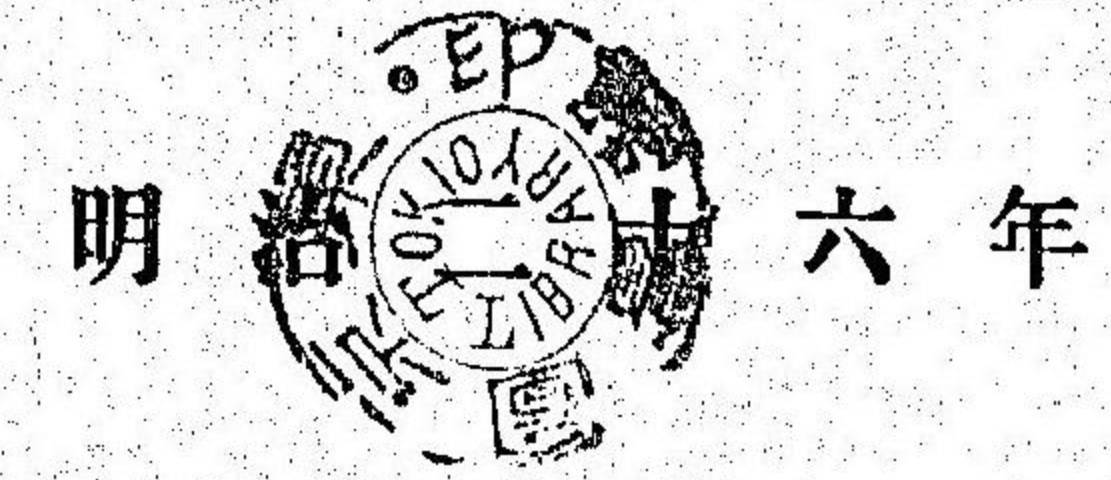


伏木測候所氣象年報

明治二十六年

146
= 40

14.6-40



伏木測候所氣象年報

測候所長 大木房英

觀測者 { 川口爲藏
四津與八郎
角澤嘉四郎

富山縣伏木測候所印行

REPORT

OF THE

METEOROLOGICAL OBSERVATIONS

MADE AT

FUSHIKI, JAPAN,

DURING THE YEAR 1893.



F. OKI, Chief of the Station.

T. KAWAGUCHI, Y. YOTSU, K. RAKUZAWA. Observers.

PUBLISHED BY THE FUSHIKI METEOROLOGICAL STATION.

伏木

明治二十六年

北緯三十六度四十七分 東經百三十七度三分

晴雨計海面上ノ高サ三米 寒暖計地上ノ高サ一米 雨量計地上ノ高サ一米二

FUSHIKI.

1893.

Latitude 36° 47' N. Longitude 137° 3' E.

Height of barometer above sea level 3.0 m. Height of therm. above ground 1.1 m. Height of rain gauge above ground 1.2 m.

Table with columns for month, barometer (晴雨計), and vapor tension (水蒸氣之張力). Rows include monthly data from Jan to Dec and annual totals.

Table with columns for month, air temperature (空氣之溫度), and relative humidity (濕度). Rows include monthly data from Jan to Dec and annual totals.

Table with columns for month, precipitation (雨雪量), and cloud amount (雲量). Rows include monthly data from Jan to Dec and annual totals.

伏木

明治二十六年

FUSHIKI.

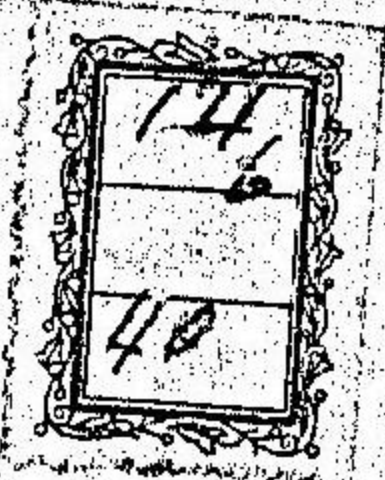
1893.

Table with columns for month, wind velocity (風速度), and upper cloud (上層雲). Rows include monthly data from Jan to Dec and annual totals.

Table with columns for month, wind observations (風向觀測回數), and wind (風). Rows include monthly data from Jan to Dec and annual totals.

Table with columns for month, number of days with various weather conditions (類別日數). Rows include monthly data from Jan to Dec and annual totals.

重方ノ更正: -0.6, 海面ノ更正: +0.3 * Reduction of barometer to standard gravity, -0.6; to mean sea level, +0.3



伏木
 明治二十六年
 FUSHIKI.
 1893.

2/10/1900

摘要	最低温度	霜	雪	積雪	最低温度ノ引續キテ水點下ニアリシ最多日數	平均温度	最高温度	降霜ノ引續キテアリシ最多日數	最高温度三十度以上ニアリシ日數	終日(九月十九日)ニ至ル日數	最高温度三十度以上ニ達セシ初日(六月廿四日)ヨリ	年分温度ノ較差	湿度最少	雨ノ引續キテ五日以上降リシ日數	雨ノ引續キテ十日以上降ラサリシ日數ナシ
	初日(本年)	終日(本年)	初終日數	本年初日	自二月十九日至三月十二日	自二月十九日至三月十二日	自八月四日至八月十七日	自十二月四日至十二月八日	自十二月四日至十二月八日	自十二月四日至十二月八日	自十二月四日至十二月八日	自十二月四日至十二月八日	自十二月四日至十二月八日	自十二月四日至十二月八日	自十二月四日至十二月八日

REMARKS

First day Last day (this year) Intervals First day (this year)

Min. Air Temp. below 0° 27th Nov. 1892 7th April 132 5th Dec.

Hoar Frost 7th Nov. " 8th April 154 31st Oct.

Snow 25th Nov. " 7th April 134 24th Nov.

Snow on ground 30th Nov. " 19th March 110 12th Dec.

Max. Continuance of days with Min. Temp. below 0° is 22 days from 19th February. to 12th March.

" " " " " Mean " " " " 6 " " 22nd to 27th February.

" " " " " Max. " above 30° " 14 " " 4th to 17th August.

" " " " " Hoar Frost " 5 " " 4th to 8th December.

Number of days with Max. Air Temp. above 30° " 30 days.

Interval between first (24th June) and last (19th Sept.) days with Max. Temp. above 30° is 88 days.

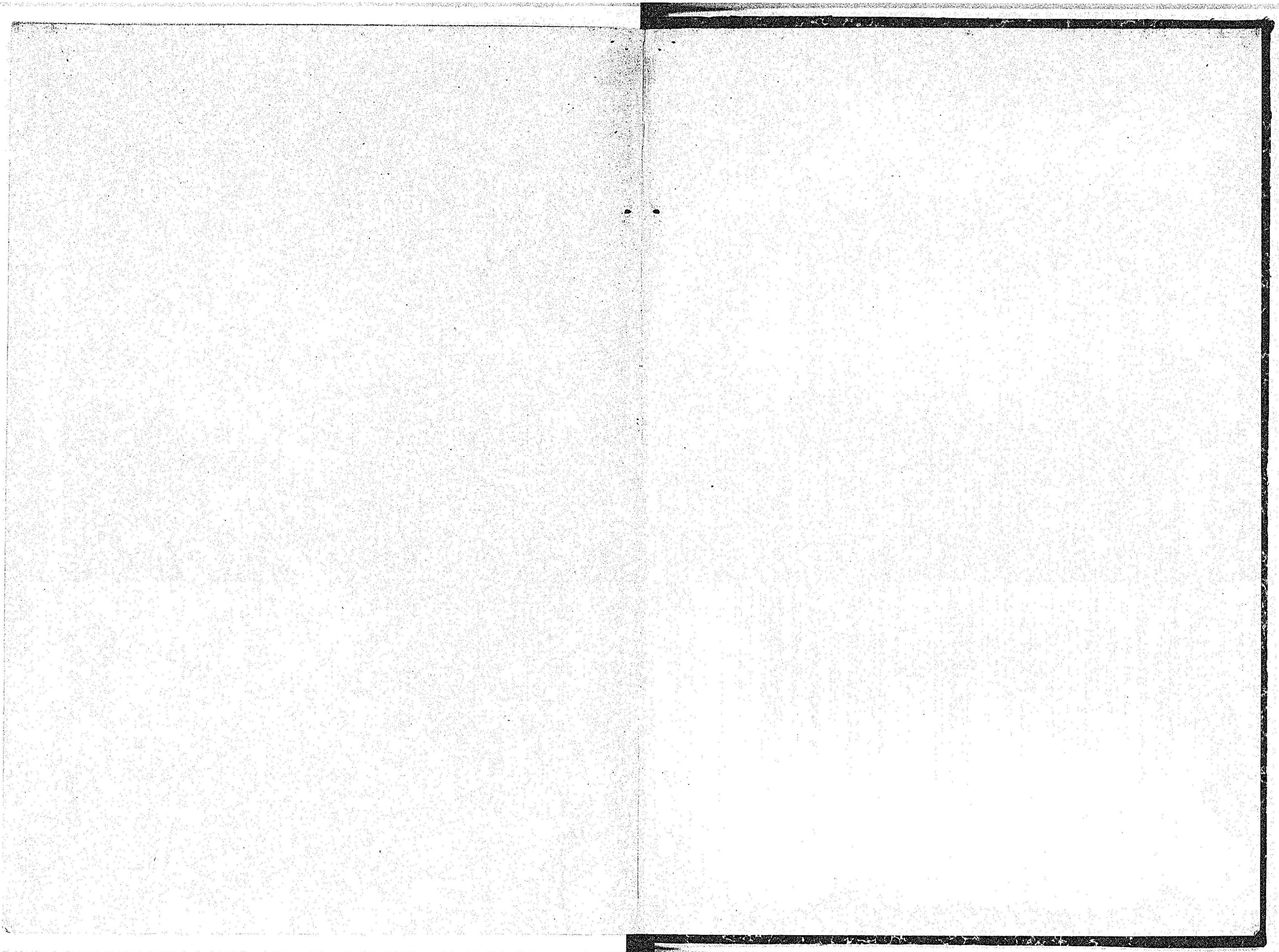
Max. Daily Range of Air Temp. 19°7 on 28th March.

Annual Range " " " 43°6.

Min. Relative Humidity 28 " 12th May.

Continuances over 5 days with precipitation are 1st-5th Jan. (5), 7th-11th Jan. (5), 13th-25th Jan. (13), 31st Jan.-9th Feb. (10), 11th-23rd Feb. (13), 25th Feb.-1st March (5), 4th-8th March (5), 23rd-30th May. (8), 20th-26th June (7), 16th-20th July (5), 21st-28th Aug. (8), 23rd-28th Sept. (6), 30th Sept.-6th Oct. (7), 11th-15th Oct. (5), 17th-21st Oct. (5), 2nd-14th Nov. (13), 16th-20th Nov. (5), 23rd-27th Nov. (5), 30th Nov.-4th Dec. (5), 6th-17th Dec. (12), 19th-31st Dec. (13).

Continuances over 10 days without precipitation are



14.6=
40

11
2

11
2