

Historic, Archive Document

Do not assume content reflects current scientific knowledge, policies, or practices.

62.61

LIBRARY
RECEIVED
JAN 16 1925
Agriculture

Pomona United Nurseries

1925

Dansville, N. Y.

1925



DELICIOUS THE FINEST QUALITY RED APPLE GROWN—BUY DIRECT FROM US



Pomona Ship C. O. D.



direct to you and require no cash to apply on account when you place your order with us

POMONA DELIVER PREPAID BY FREIGHT AND EXPRESS ALL C. O. D. AND CASH ORDERS THAT AMOUNT TO \$7.00 NET AND OVER TO THE FOLLOWING STATES

Connecticut, Delaware, Illinois, Indiana, Maine, Maryland, Massachusetts, Michigan, New Hampshire, New Jersey, New York, Ohio, Pennsylvania, Rhode Island, Vermont.

TO ALL OTHER POINTS ON ORDERS OF \$7.00 NET AND OVER WE PREPAY ONE-HALF OF THE TRANSPORTATION CHARGES

SPECIAL CASH DISCOUNT FOR SPRING

If you prefer to send cash with order we will allow a
Special Discount of 6%

No discount allowed on C. O. D. orders.

Order Trees Early

Wherever you live it pays to order early. Send in your order just as soon as you know what you want **Pomona method of shipping C. O. D.**, requiring no cash with order makes it convenient for you to do this, and we want you to get your trees and plant them as soon as the weather conditions and the preparation of your land will permit, either spring or fall.

Buy from the firm who has first class two year trees and save disappointment later.

Our Shipping Season

We pack and ship all winter to Southern States. Our regular Spring packing and shipping season usually opens here February 1st and continues into the month of May. The planting season is not regulated by any particular month or day, nor by the state of vegetation where the planting is to be done, but by the **condition of the trees to be planted.** Hence, trees can be sent with safety from Dansville, N. Y., to localities several degrees south, even if they do not arrive until the ordinary transplanting season in that locality is passed.

In Filling Your Order

We will furnish varieties ordered insofar as our stock admits. In case we are out of a variety or size called for, we reserve the right to substitute another similar variety of equal merit or another size or grade of equal value. We shall do our best to make every shipment satisfactory and profitable to our patrons.

Guarantee

In the event that any nursery stock sold by us should prove untrue to name under which it is sold, we hereby agree, on proper proof of such untruthfulness of name, to rectify and replace the same or refund the purchase price. Except for such liability, and in respect to all nursery stock sold by us, we give no warranty, express or implied, as to description, quality, growth, productiveness or any other matter, and in case of error in variety the purchase price shall be the measure of damages, if order is accepted by us.

How to Remit

If you prefer to take advantage of our **6% discount** and send cash with order it should be made by check, Post Office Money Order, Express Money Order, Draft on New York Bank or Registered Letter. We disclaim all responsibility unless remittances are made as above directed.

Propagated Where the Best Trees Grow



Terms and Conditions of Sale

Safe Arrival Guaranteed.

Transportation Paid.

C. O. D. To enable you to avoid disappointment later, order now and we will reserve the varieties to be shipped C. O. D. at planting time and will require no cash with order.

TRANSPORTATION PREPAID. We prepay freight, express and postage as offered in catalog so when buying from us you know just what the stock will cost F. O. B. your depot and avoid your paying high express and freight charges.

GUARANTEE. The writers' thirty-five years' experience in budding from bearing orchards, cultivating and working among the trees he grows and sells direct to the planter enables him to do his duty, certify and guarantee his trees true to name.

CERTIFIED. We welcome this idea for if one Dansville nurseryman's trees are certified correct, it makes Dansville grown trees (certified trees) since all purchase more or less buds to propagate from one another.

CONDITION OF SALE. All stock sold by us will be of the grade indicated, strictly first quality, whole rooted, (not piece root graft) clean, healthy, free from pest and diseases and shipped under the official certificate of a N. Y. State inspector.

RISKS. We take all risks and guarantee the delivery of stock in good condition. If not in first class condition upon arrival, notify us within 5 days after receipt of same and we will immediately forward new stock to replace.

REPLACEMENT. All stock that fails to grow we will replace free next fall if we are notified before September 1st.

When possible to grow better trees—Pomona will grow them.



Progress

Service

Stability

Progress

Thirty-five years ago F. W. Wells engaged in growing and selling nursery stock direct to the planter with Green's Nursery Company. While there his original genius enabled him to organize the mail order system now used by the largest catalog firms in America.

A few years later he became Secretary of that corporation and after seventeen years of service he resigned to come to Dansville to organize and perfect a mail order business which carried his name, due to the fact that he was prominently known to all fruit growers of the state.

After four years of hard work he was obliged to leave this business then well established. He then organized a business of his own under the title of Wells Wholesale Nurseries. Two years later he purchased the business of Sheerin's Wholesale Nurseries and still later organized Pomona Nurseries, Inc., all of which he owned and conducted until after the war.

He then consolidated the above names under one title, Pomona United Nurseries, which business he is successfully conducting at this time and wish to thank many of the former customers of the firms mentioned for the loyal support during these years, which greatly exceeded his expectations, and we again renew our pledge of serving you as conscientiously and as earnestly as in the past.

Service

Planters all over the country deal with us as a matter of habit. They show that they appreciate truth and fairness. Every day we receive letters of appreciation like those printed in this catalog. They show convincing evidence that they welcome being served as we want them to be served. These customers and the new friends they make for us each year are proof that they do endorse our policy of square dealing.

Stability

The founder of this business has spent his whole life growing trees and dealing direct with the planter through the mails. He has a wider experience along these lines than any nurseryman here. Convincing proof of this is that Wells is the only Dansville nurseryman ever awarded first premium on fruit trees at New York State fair which he won two years in succession. You will receive catalogs from other firms offering attractive prices and making extravagant statements but we would ask you not to regard prices as the index to value. You should investigate the stability of the one making such offers before ordering. You will find the price quoted by us as low as first quality stock carefully graded can be sold by any of our competitors.

Be Not Disappointed

You, like many others, have probably been disappointed about getting the trees and plants you wanted because you waited too late to place your order. It is best to order early, getting first choice.

*Take Advantage of
Our C. O. D. Offer*

Propagated Where the Best Trees Grow

Satisfied Customers Everywhere Endorse Our Policy of Fair Dealing



We offer first quality stock, truthfully described, sell it reasonably, deliver it promptly and treat everyone fairly in every transaction.



Belleville, Pa., Oct. 20th, 1924

Please send me fall catalogue. I bought trees from you years ago. They are bearing fine every year. I never got finer trees in my life.. They were fresh dug.

Wm. B. Kocer,

Ashland, Ky., Apr. 14th, 1924

In 1916 I bought of you a lot of Nursery stock. It proved to be fine and is the pride of the home and admired by all who see it.

A. O'Neil.

Stony Point, N. Y., Feb. 18th, 1924

I bought trees from you several years ago which are fine and fruiting, true to name.

H. O. Brooks.

Voorheesville, N. Y., Jan. 14, 1924

Twelve years ago I bought trees of you which have given satisfaction. I will need more this spring.

M. Harner.

Corydon, Ind., Feb. 6th, 1924

Several years ago I bought trees of you which are bearing now and they are all right, true to name.

J. B. Danner.

Mystic, Conn., Feb. 11th, 1924

Pomona United Nurseries

Please mail me catalogue. Many years ago I bought a large number of your trees which have done well and are true to name.

W. A. Phillips.

Golden, Colo., Jan. 16th, 1924.

Ten years ago we purchased cherry trees from you which are True to Name and have been well satisfied both with their growth and productiveness.

Tegarden Bros.

Gasport, N. Y., Jan. 16, 1924

The last Peach orchard I planted I bought my trees from you. This was 8 years ago. All are true to name and have done fine.

W. Bugbee.

East Holden, Me., Apr. 4th, 1924

Having placed an order with you in 1920 and was so well satisfied I am sending you another order this spring.

F. Sweet.

Port Crane, N. Y., Mar. 26th, 1924

For 9 years I have given you an order each year. Have received fine stock which is true to name.

E. Young.

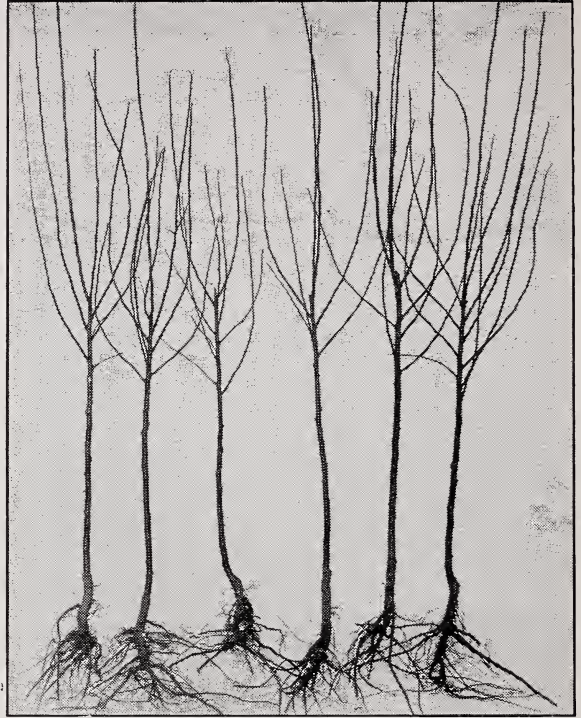


Notwithstanding the fact that it is our policy to sell on a C. O. D. delivery basis we cheerfully refer you as to our responsibility to any bank or business man here in Dansville, or if desired we can doubtless refer you to customers in your vicinity.



Pomona Grown Means Quality

There is a difference in trees. No two are alike, just as two dairy cows may have the same general appearance, yet one may be worth several times as much as the other as it nets the owner a larger profit while the other does not earn her feed, so may there be an equally great, if not greater difference in nursery stock—with one exception, the unprofitable cow can be sold while the unprofitable orchard can be disposed of only by pulling it out. **Pomona** trees have all the qualiteis which make early bearing, long lived and productive orchards. They are grown and handled in a thorough manner from the time the stock is planted until the trees are delivered to you. Many men who plant an orchard have but a vague idea of what constitutes a first class tree. Such a man can investigate carefully and buy from a reliable nursery—a nursery like the **Pomona United Nurseries** whose manager's life work has been growing trees for business and home orchards the past **thirty-five years** and who is personally acquainted with orchard and garden requirements in every part of the union. But the experienced fruit grower, the man who knows a good tree, and then plants a second class one because it is cheaper, is to be pitied. Cheap trees are seldom, if ever, a bargain. The planter should insist having first class trees and be willing to pay a fair price for them.



POMONA APPLE TREES 5½ to 7 ft. High

What Age Trees to Plant

We grow and sell both one and two year old trees. **Pomona Trees** are as thrifty and vigorous as is possible to grow them. We prepare our land, cultivate and work with the trees so that we practically control their developments. In buying trees, please keep in mind that it is the most vigorous individual trees that are the best. Three and four year old trees might be somewhat larger but do not give satisfactory results. No first class nurseryman offers three and four year old trees. Trees that remain in the nursery row that long are bound to be stunted by over crowding, and they do not give satisfactory results. **Prof. Paddock and others say:** "The age of the tree at the time of setting seems to have little to do with the age at which the orchard comes into bearing, so that one really saves nothing in setting trees too large to start with."

Two Year Trees

Most orchardists prefer **two year old trees** and buy them from us year after year. **Prof. Waugh says:** "Some planters prefer one year old stock, and when it is large and well grown it is almost, or quite as good, as two year old stock. For the most part, however, two year old stock is to be recommended. Anything older than two years is strictly undesirable."

Buy from the firm that has first class two year trees and save disappointment later

We Have Extensive Plantings at Dansville and Geneva, N. Y.

Ship From the Nearest Point and by the Most Direct Route.

The Planting and Care of Fruit Trees



Correct Way to Prune Trees for Planting

Pruning the Tree

Is a matter of great importance. The illustration here shows the correct way to trim for planting. Severe pruning may seem for a time to injure the appearance of the tree but this is the way to get proper results.

Planting

The hole must be large enough to receive the roots freely, without cramping or bending them from their natural position; the larger the better. Let the tree be the same depth it stood in the nursery (the old mark can be readily discerned) and not deeper, except in the case of dwarf trees. These latter should be set so that the point of union comes two or three inches below the surface of the ground. The tree being held upright, the finest and best earth from the surface should be carefully worked among the roots with the fingers, filling every space and bringing every root in contact

with it. Set the tree as firm as a post, thoroughly packing or stamping the earth.

Pruning Peach Trees After Planting

When growth starts, prune the peach trees to a whip, and cut them back to whatever height you desire your trees headed. We prefer heads not highr than 18 inches.

Number of Trees or Plants to an Acre. The following table will show how many trees or plants are required for an acre at any distance apart:

Distance	Square Method	Triangular Method
40 feet apart	27 trees	31 trees
35 feet apart	35 trees	40 trees
30 feet apart	50 trees	55 trees
25 feet apart	70 trees	80 trees
20 feet apart	110 trees	125 trees
18 feet apart	135 trees	155 trees
15 feet apart	195 trees	225 trees
12 feet apart	305 trees	350 trees
10 feet apart	435 trees	505 trees
8 feet apart	680 Plants	775 Plants
6 feet apart	1,210 Plants	1,600 Plants
5 feet apart	1,745 Plants	2,010 Plants
4 feet apart	2,722 Plants	3,145 Plants
3 feet apart	4,840 Plants	5,590 Plants
1 foot apart	43,560 Plants	50,300 Plants

When Trees Arrive

When trees arrive, unpack at once, cut open the bundles and heel them in without any delay, each variety by itself. Be sure that the labels are carefully kept with each bundle. Do your work carefully and thoroughly. See that no water stands around where the trees are trenched. Dig a ditch leading off from where the trees are trenched, to carry the surface water off. Be careful to see that all straw and moss is removed from the trees before trenching. When unpacking and trenching, if the least bit dry, "puddle" the roots before heeling-in.

Preparing the Soil

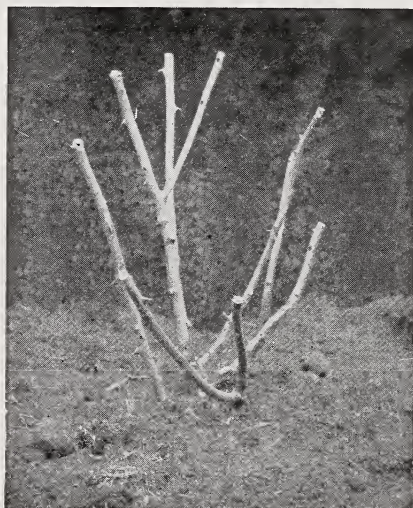
For fruit trees the soil should be dry, either natural or made so by thorough drainage as trees will not live or thrive on a soil constantly saturated with water. It should also be well prepared beforehand by at least twice plowing, using the subsoil plow after the common one at the second plowing. On new fresh lands, manuring will be unnecessary; but on lands exhausted by cropping, fertilizers must be applied, either by turning in heavy crops of clover, or well rotted barnyard manure. To insure good growth of trees, land should be in as good condition as for a crop of wheat, corn or potatoes.

Labels

Labels should be removed and some other method adopted for recording varieties. The wires will cut and damage the limbs.

Mulching

When trees or bushes are planted, they should be mulched or covered with a layer of coarse manure or litter from three to six inches deep for a space of say, two feet more in diameter than the extent of the roots. This keeps the earth moist and at an even temperature.



Correct Way to Prune Rose Bushes and Shrubs

Apple Trees at Reduced Prices



35 Cents Each
\$3.00 for 10
\$27.50 for 100

LIST OF VARIETIES

Baldwin	Pound Sweet
Ben Davis	Rome Beauty
Banana	Rox. Russet
Duchess	Red Astrachan
Delicious	R. I. Greening
Early Harvest	Stayman Winesap
Fameuse	Smokehouse
Grime's Golden	Seek No Further
Hubbardston	Spitzenburg
Jonathan	Tolman Sweet
King	Wagener
Maiden's Blush	Wolf River
McIntosh	Wealthy
Northern Spy	Yellow Trans.
N. W. Greening	York Imperial

All reliable, planting size, 2 year, 3 to 4 ft. high, 35 cents each, 10 for \$3.00, 100 for \$27.50.

Apples For the Home should be the first thought of every farmer, of every suburban home-owner, of everyone having a lot or garden large enough for a few trees. No fruit is more healthful, no fruit will afford so much pleasure and profit for a small outlay.

LEST YOU FORGET—

We are not too big for small business—and not too small for big business. Whether your order calls for a few trees or several thousand it is appreciated at Pomona's.

Peach Trees at Reduced Prices

40 Cents Each
\$3.50 for 10
\$23.75 for 100

LIST OF VARIETIES

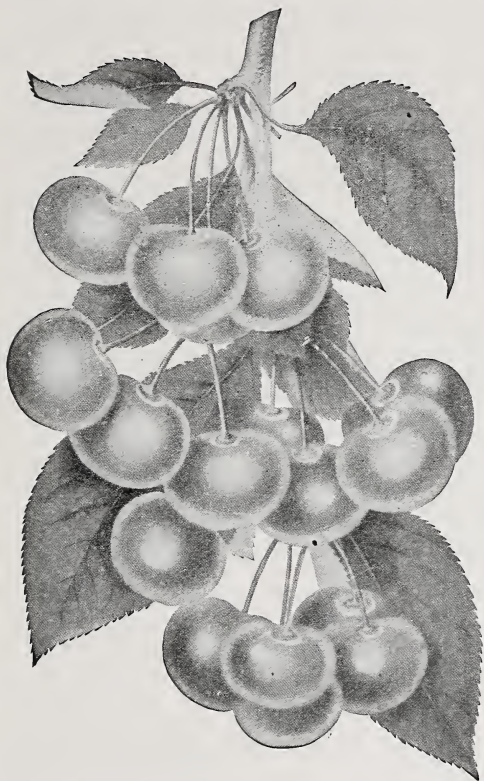
Elberta	Hale
Champion	Hiley
Crawford's Late	Beer's Smock
Crawford's Early	Yellow St. John
Carman	Niagara
Greensboro	Foster
Fitzgerald	Chair's Choice
Smock	Crosby
Rochester	Hill's Chili

All reliable, planting size, 1 year trees, 3 to 4 ft. high, 40c each, 10 for \$3.50, 100 for \$23.75.



Propagated Where the Best Trees Grow

Cherry Trees at Reduced Prices



55 Cents Each
\$5.00 for 10
\$45.00 for 100

LIST OF VARIETIES

Baldwin	Wragg
Dyehouse	Gov. Wood
Ea. Richmond	Black Tart
Eng. Morello	Windsor
May Duke	Napoleon
Montmorency	Schmidts
Ostheime	Y. Spanish

All reliable, planting size, 2-year trees, 3 to 4 ft. high, 55 cents each, 10 for \$5.00, 100 for \$45.00.

Superiority in Trees

Which horse gets his nose first across the line? Which dog wins the blue ribbon? The thoroughbred—every time.

It is the same with trees

Thirty-five years of experience is behind every **Pomona Tree**, the result being true to name, healthy, vigorous stock that develops into early profitable bearing.

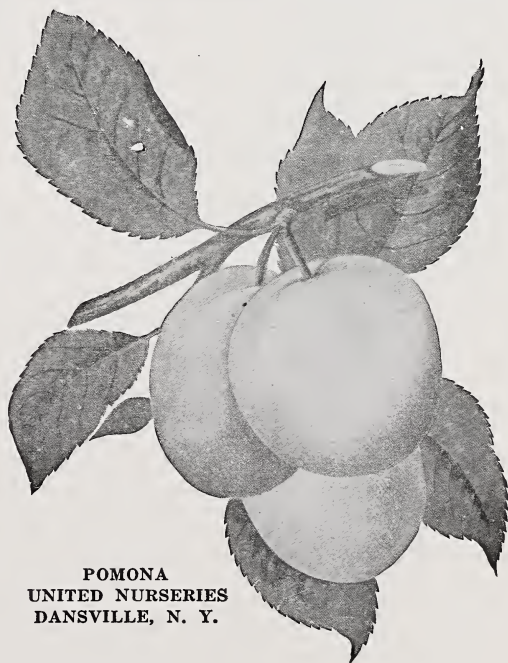
Plum Trees at Reduced Prices

55 Cents Each
\$5.00 for 10
\$45.00 for 100

LIST OF VARIETIES

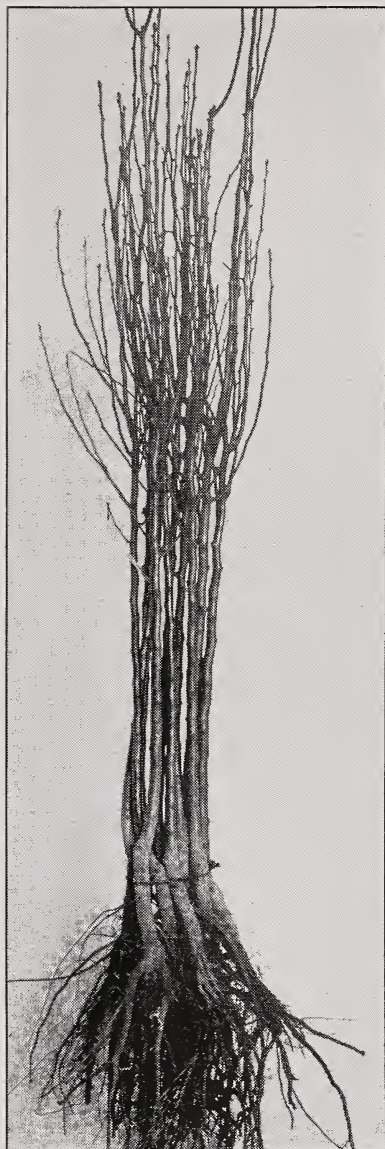
Abundance	Fellemburg
Green Gage	Lombard
Reine Claude	Ship. Pride
Gueii	Imp. Gage
Niagara	Burbank
Thanksgiving	Bradshaw
German Prune	Red June
Moore's Arctic	York State
Shrop. Damson	Yellow Egg

All reliable, planting size, 2-year trees, 3 to 4 ft. high, 55c each, 10 for \$5.00, 100 for \$45.00.



POMONA
UNITED NURSERIES
DANSVILLE, N. Y.

Standard Pear Trees at Reduced Prices



Standard Pear Trees, 5½ to 7 Ft.
Fresh Dug Upland Grown

2 Year, 3 to 4 Feet High

55 Cents Each 10 for \$5.00 100 for \$45.00

LIST OF VARIETIES

Anjou	Duchess	Sheldon	Clapps	Kieffer
Flemish	Seckel	Lawrence	Bartlett	

All reliable, planting size trees, 2 year, 3 to 4 feet high, 55 cents each, 10 for \$5.00, 100 for \$45.00

Quince Trees at Reduced Prices

60 cents each, \$5.50 for 10, \$50.00 for 100

LIST OF VARIETIES

Orange	Champion
Meeches	Van Deman

All reliable, planting size trees, 3 to 4 feet high.

Apricot Trees at Reduced Prices

50 cents each, 10 for \$4.50

LIST OF VARIETIES

Alexander	Gibb
Alexis	J. L. Budd
Harris	Montgamet

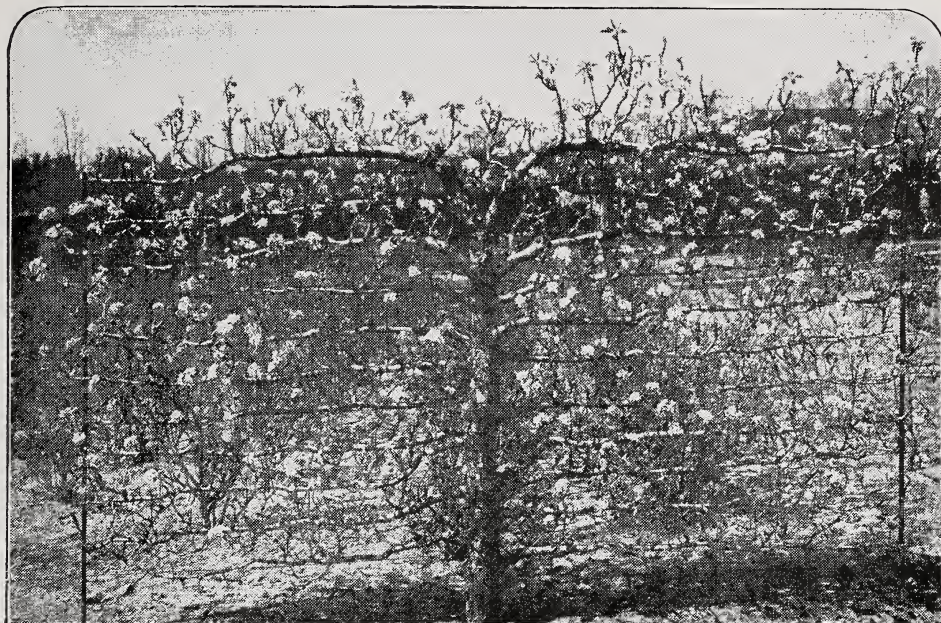
All reliable, planting size trees, 3 to 4 feet high.

Best Size Trees To Plant

MANY PLANTERS PREFER TO PLANT THE SMALLER SIZE TREES AS IT REDUCES THE COST OF INVESTMENT. In all cases they report success in planting this grade as the fibers of the roots are small and readily adhere to the ground and make a rapid and very satisfactory growth the first year. A few buyers of fruit trees have an idea that the smaller size trees are poor trees and are not fit to plant. It is a mistaken idea. There are hundreds of causes which may affect the size of a fruit tree in the nursery row. The fact of the matter is the size of a tree from a well cultivated block, carefully grown, healthy, clean, free from disease, fresh dug, and carefully handled is of equal value as the larger tree grown in the same block and will come into bearing equally as early.

Propagated Where the Best Trees Grow

Dwarf Fruit Trees Are the Solution for Small Backyards



The dwarf pear tree trained in a novel way, suitable for use against a garage or as a screen

Select Varieties of Dwarf Pears

Dwarf Pear Trees often bear the same year planted, and the trees occupy but little room in the garden. They can be planted very closely together and kept headed back. There is scarcely a city or town lot so small that room cannot be found for a few dwarf fruit trees. Their hardiness makes it possible for anybody, anywhere, to produce delicious fruits.

We offer the following list of superior varieties of Dwarf Pear Trees. These are about all the varieties that will succeed as Dwarf trees. (See description of these on other pages.)

Bartlett, Seckel, Clapp's Favorite, Duchess, Anjou, Kieffer, Flemish Beauty and Wilder Early.

Special Price for Dwarf Pear

Extra Size Trees, 2 yr., 4 to 5 ft., XXX 85c each; 10 for \$8.00; 100 for \$75.00.

Orchard Size Trees, 2 yr., 3 to 4 ft., XX 75c each; 10 for \$7.00; 100 for \$65.00.

Select Varieties of Dwarf Apples

Like Dwarf Pear Trees they come into bearing much earlier than Standard Trees. Their low broad heads are within reach, so that apples or pears can be easily picked. You can plant your garden full of dwarf fruit trees and still grow strawberries and vegetables. With dwarfs some varieties will bear the second year, and will bear a full crop the fourth year.

We can supply the following varieties: **Yellow Transparent, Granvenstein, Baldwin, McIntosh, Alexander, Duchess, Grimes' Golden, Yellow Belleflower, Twenty Ounce, Delicious, Wagener, Jonathan, Wealthy, Opalescent, Red Astrachan.**

Special Price for Dwarf Apple

Extra Size Trees, 2 yr., 4 to 5 ft., XXX, \$1.00 each; 10 for \$9.50.

Orchard Size Trees, 2 yr., 3 to 4 ft., XX, 90c each; 10 for \$8.50.

CERTIFICATE

No. 2418

STATE OF NEW YORK

Certificate of Inspection of Nursery Stock

Department of Farms and Markets

This is to certify that the stock of Pomona United Nurseries, of Dansville, County of Livingston, State of New York, was duly examined in compliance with the provisions of article 14 of the Farms and Markets law, and was found to be apparently free from any contagious or infectious disease or diseases, or the San Jose scale, or other dangerously injurious insect pest or pests. This certificate expires Sept. 1, 1925.

Dated Albany, N. Y., Sept. 1st, 1924.

BERNE A. PYRKE, Commissioner.

BY GEO. G. ATWOOD, Director Bureau of Plant Industry.

Among the great variety of fruits produced in our Country there is none so healthful, so easily grown and useful in so many ways in cooking, preserving and making jellies as the Apple, truly named the King of Fruits.

LEADING VARIETIES. For the convenience of our customers who may not be entirely familiar with the best and most profitable varieties, we have given full description of such sorts in black face type. In making your selection, it will pay you to choose from among those varieties.



RED ASTRACHAN—The best early dessert apple

Have You Planted a Tree?

Theodore Roosevelt said:

A people without children would face a hopeless future; a country without trees is almost as hopeless; forests which are so used that they cannot renew themselves will soon vanish, and with them all their benefits. When you help to preserve our forests or plant new ones you are acting the part of good citizens.

PLAN TO PLANT ANOTHER TREE

Red Astrachan. The well known early variety. Fruit large, roundish, nearly covered with deep crimson, juicy, rich, acid and fine. Highly regarded on account of its fine appearance, earliness and hardiness. Tree a vigorous grower and sure bearer. Aug.

Early Harvest. Medium to large; pale yellow; fine flavor. Tree a moderate, erect grower, and a good bearer; a beautiful and excellent variety for orchard and garden. Aug.

Sweet Bough. Large, pale greenish yellow; tender and sweet. Moderate grower and a good bearer. August.

Williams' Favorite. A bright red apple, of mild, agreeable flavor. Aug. to Sept.

Pomona Wholesale Price for All Varieties of Fresh Dug Apple Trees

Size	Age	Height	Grade	Each	10	100
Extra Size	2 Year Trees	5½ to 7 Feet	XXX	85	\$7.00	\$55.00
Orchard Size	2 Year Trees	4½ to 5 Feet	XX	.70	6.00	50.00
Largest Size	1 Year Trees	3½ Feet and Up	XXX	.65	6.00	45.00

FREIGHT AND EXPRESS CHARGES PAID ON ALL ORDERS OF \$7.00 AND OVER TO STATES LISTED ON FIRST INSIDE COVER PAGE

Propagated Where the Best Trees Grow

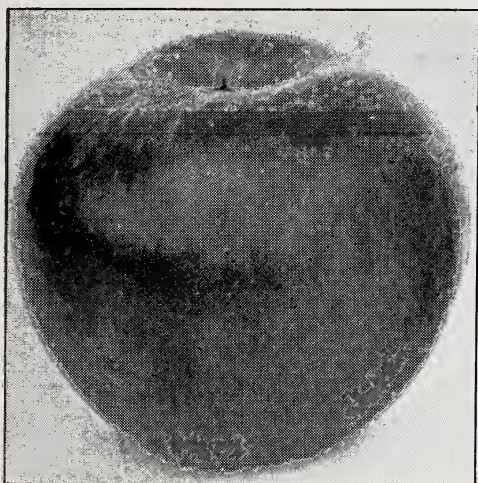


Yellow Transparent. A Russian variety. Tree an upright grower and a very early and abundant bearer. Fruit of good size; skin clear white, turning to a pale yellow; flavor acid and very good.

Carolina Red June. Small or medium, deep red, quality good. Tree hardy and a fine grower. August.

Golden Sweet. Large, pale yellow, tree a good grower and very productive. August.

Autumn Strawberry. Medium, streaked, tender, juicy, fine and productive. Sept. to Oct.



Duchess of Oldenburg. A Russian variety of large size and beautiful appearance. Roundish, streaked with red and yellow, flesh white, tender, juicy and fine. A Cooking apple of highest quality and esteemed by many for dessert. Succeeds well in the Northwest.

Fameuse. (Snow Apple)—Hardy; Medium size; deep crimson; flesh in snowy white, tender, melting and delicious. Tree vigorous with dark wood; one of the finest dessert fruits, and valuable for market; succeeds particularly well in the North. Nov. to Jan.

Maiden's Blush. Medium size, flat, quite smooth and fair; pale yellow with beautiful red cheek. Tender, sprightly, pleasant acid flavor. Tree vigorous and productive. Sept. and Oct.

Fanny. Large, deep rich crimson, tender, juicy, pleasant. Tree vigorous and very productive. August.

Fall Pippin. Very large, roundish, oblong; yellow; flesh tender, rich and delicious. Tree spreading, and a fine bearer. September.

Alexander. A Russian variety, very hardy and abundant bearer. Fruit large, deep red; flesh white, crisp, tender, good flavor. Oct.

Pumpkin Sweet. (Pound Sweet.)—A fine, large, yellow sweet apple. Excellent for baking or stewing. October to January.



Wealthy. This is a beautiful, hardy winter apple, originating in Minnesota. Fruit large, roundish; skin smooth, oily, covered with a dark red. Flesh white, tender, juicy, vinous, sub-acid; quality very good. In season it differs somewhat, according to locality; in New York and neighboring states its season is Dec. to Feb., and owing to its early bearing qualities it is planted largely as a filler.

Gravenstein. An apple of excellent quality. For culinary purposes it is perhaps unexcelled by any variety of its season. Fruit large, uniform in size, skin thin, tender greenish yellow overlaid with dark red. Sept.



FAMEUSE—The Best Late Fall Apple



DELICIOUS RED APPLE

Very Productive. So largely advertised and highly spoken of by leading fruit growers

Hubbardston Nonesuch. Here is an apple that is not surpassed the world over for large size, great beauty of color or for excellent quality. Fruit large, roundish; color bright red or yellow skin; flesh yellow, with a fine, rich, aromatic flavor, sub-acid. November to January.

McIntosh Red. An exceedingly valuable Canadian sort; medium size, nearly covered with dark red; flesh white, fine, very tender, juicy and refreshing. A good annual bearer of fair, handsome fruit. Resembles the Fameuse, but larger and more hardy, and fully equal in quality to this standard sort. Its season of ripening varies according to the location.

Roxbury Russet. Medium to large. Surface rough, greenish covered with russet. Tree free grower, spreading; a great bearer. Keeps until June.

Esopus Spitzenburg. Large, deep red with gray spots, and delicately coated with bloom; flesh yellow, crisp, rich and excellent. November to April.

Stayman's Winesap. Fruit medium, large; skin green and yellow, red-striped, flesh yellow, firm; quality excellent.

Jacob Sweet. A large showy apple, green or yellowish, often with bright blush. One of the best sweet apples. October to April.

Gilliflower. (Black.) An old dessert apple; tree a good vigorous grower and a reliable cropper. October to February.

Delicious. This apple is approximately named for its handsome appearance as well as high quality. Everyone should plant one or more trees. Fruit large, oblong, nearly covered with bright red; of the highest quality.

King of Tompkins County. One of the standard varieties grown for commercial purposes, and gives the greatest satisfaction when top-worked on some hardier variety. The fruit is of a bright red color, large and uniform. The flesh is yellowish, crisp, tender, juicy and sub-acid, and of the best quality.

Grimes' Golden. Medium to large size; skin golden yellow, sprinkled with gray dots; flesh crisp, tender, juicy, sprightly, very good to best. Grown in the South and Southwest. Jan. to Apr.

Smoke House. This grand apple is a great favorite in Pennsylvania and doesn't seem to be known much elsewhere. Tree a vigorous grower, healthy, hardy and a reliable cropper. The fruit hangs well to the tree and is of good color and quality. October to March.

Gano. A fine hardy commercial sort. Very richly colored, uniform in size; keeps until March; fruit very handsome, flesh pale yellow, mild, sub-acid, good. Large, good marketing and keeping.

Yellow Belleflower. A hardy apple of large size, a beautiful golden color, often with red, blush; conical in shape. Flesh very tender and fine grained, crisp, juicy, sub-acid, of excellent quality. October to February.



A Baldwin Orchard will start an income for you that will be lasting. A few trees around the home will afford pleasure and profit, also beautify your grounds and add value to your place

Baldwin. A great market apple, very productive of fair handsome fruit. No variety yields larger crops or bears shipment better, or is more attractive in color, size and shape, than the Baldwin. It is esteemed as an eating apple, and for cooking. For a commercial orchard it can be relied upon. Large, bright red, crisp, juicy and rich; tree vigorous, upright and productive.

Rome Beauty. A large and handsome, apple, almost entirely covered with a bright red; of high quality. The flesh is tender, juicy and highly flavored. It is a popular apple over a wide range of country. Dec. to March.

Newtown Pippin. (Albemarle Pippin)—This is one of the best apples for shipping to foreign markets. When fully ripe it is yellow with red cheek and a smooth skin.

N. W. Greening. A hardy winter apple of very large size, much larger than R. I. Greening. This apple is highly prized in localities where the R. I. Greening will not succeed. "One of the best of the hardy kinds." Round and symmetrical in shape; color, green, which turns yellow at full maturity; flesh yellowish, fine grained, tender, juicy; sub-acid; quality good.

Bailey Sweet. A beautiful red apple of good quality. October to January.

Seek-No-Further. Medium to large, slightly russeted with dull red stripes; tender, rich, spicy and fine; good grower and bearer. November to February.

Boiken. Medium size; yellow, tart, acid, long keeper. A very good cooking apple.

Wagener. Medium to large; deep red in the sun; flesh firm, sub-acid, and excellent; very productive, bears very young. Dec. to May.

Winter Banana. Perfect in form; golden yellow, and beautifully shaded with bright crimson red; flesh lemon-yellow, fine grained, sub-acid, rich, aromatic flavor, and of the highest quality. Nov. to Jan.

York Imperial. A fine, hardy, large, red apple; succeeds over a wide range of country. A fine market sort, bringing highest prices. Fruit large, oblong, smooth, skin yellow and nearly covered with light to dark red; flesh yellow, juicy, firm, sub-acid, good. November to February.

Northern Spy. One of the standard and best known varieties. Has long been a favorite among commercial sorts in northern New England, Michigan, New York and adjoining states. Dec. to Mar.

SELECT VARIETIES OF CRAB APPLES

Whitney's Sedling. Large, averaging one and one-half to two inches in diameter; skin smooth, glossy, green striped, splashed with carmine; flesh firm and juicy.

Transcendent. Medium to large; roundish, oblong; golden yellow, with a rich crimson cheek, covered with a delicate white bloom; flesh yellow, crisp and when fully ripe, perfectly hardy.

Large Red Siberian. About an inch in diameter, grown in clusters; yellow, lively scarlet cheek. Tree erect, vigorous, bears young.

Hyslop. Almost as large as Early Strawberry Apple; deep crimson; very popular on account of its large size, beauty and hardness. Keeps well into the Winter.



Jonathan Apples

Rhode Island Greening. This large and superior winter apple is famous over a large extent of country, and is more highly prized for cooking and eating than any other variety. It is a good keeper but will keep better if picked early. This Greening is a beautiful yellow color when ripe, and is a most abundant yielder. March to April.

Sutton Beauty. Fruit large, waxy yellow striped with crimson; flesh white, tender, juicy, mild acid; quality good and a remarkable keeper; very productive. Dec. to Feb.

Golden Russet. Medium to large size, dull russet, with a tinge of red on the exposed side; flesh greenish, crisp, juicy, and high flavored; hardy, bears well. November.

Ben Davis. Succeeds wherever apples are grown. There is no apple that has more favors on account of its hardiness, productiveness, beauty and endurance in shipping.

Jonathan. A beautiful red apple, highly flavored and of excellent quality, being tender, juicy, spicy, and rich—a splendid family sort and highly profitable for market. Productive. Nov. to Apr.

Mammoth Black Twig. The tree is a strong grower, a regular and abundant bearer. A good winter apple. Deep red; sub-acid, very high flavored.

Stark. Fruit large roundish; skin greenish yellow, much shaded with light and red, and sparkled with brown spots; flesh yellowish. January to May.

Tolman Sweet. Season, winter. Medium to large size; color, light yellow; flesh, white, firm, rich, and very sweet. Excellent for winter baking. A late, well known favorite.

Twenty Ounce. Very large; greenish, becoming yellow, mottled and splashed with bright red. Flesh tender and juicy. September.



Pomona Block of 2 Year Apple Trees (reduced). Buy for the firm who has first class 2 year trees and save disappointment later. TAKE ADVANTAGE OF OUR C. O. D. OFFER.

Propagated Where the Best Trees Grow

The leading characteristics of the apricots are extreme hardiness, early bearing, productiveness, and freedom from disease. Every garden should have one or more trees. In the selection of choice garden fruits it is quite indispensable. It succeeds well trained against a house wall, fence or trellis, leaving the open ground for other trees.

Alexander. Very hardy, an immense bearer; fruit large, yellow, flecked with red; very beautiful, sweet and delicious. July.

Gibb. Tree hardy, grows symmetrical, productive; fruit medium, yellowish, sub-acid, juicy and rich; the best early variety, ripening soon after strawberries. Last of June.

Alexis. Very hardy; an abundant bearer; yellow, with red cheek; large to very large; slightly acid, rich and luscious. July.

J. L. Budd. Tree a strong grower and profuse bearer, fruit large, white with red cheek; sweet juicy, with a sweet kernel, as fine flavored as an almond; the best late variety.

Harris. Equal in size and quality to the best cultivated, recommended for its hardiness and good bearing qualities. June 20th to July 1st.

Montgamet. Deep yellow, one of the best for preserving. Sub-acid and of good quality. Tree vigorous and productive.

St. Ambrose. One of the largest and finest apricots, ripening early in August. Season early to medium.

Selected Varieties of Apricots



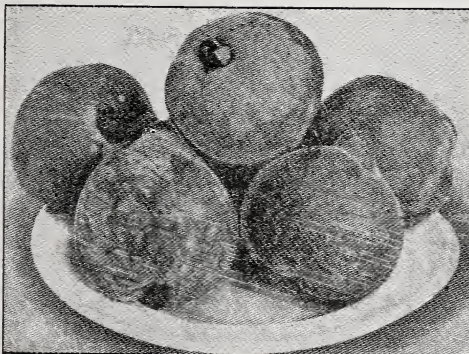
ALEXIS APRICOTS

Pomona Wholesale Price for all Varieties of Apricots

Extra Size	2 Yr. Trees	XXX	4 to 6 Ft.	85c each	10 for \$8.00
Orchard Size	2 Yr. Trees	XX	3 to 4 Ft.	75c each	10 for \$7.00

Select Varieties of Quince

The Quince is a fruit very useful for cooking, canning and preserving and should be more generally planted. It always brings good prices on the market. Very desirable in making preserves, as it imparts the fine quince flavor to any other fruit with which it is prepared.



A PLATE OF ORANGE QUINCE

Rea. (Rea's Mammoth)—A large and fine variety of the Orange Quince. Rich and aromatic, one of the largest and handsomest. Bears young. A strong grower and productive.

Van Deman. A strong grower, the hardest, surest and youngest bearer. Fruit golden, big, fine flavored. Tree productive.

Champion. A good variety, but ripens rather late for some sections. One of the best for section not subject to early frosts.

Meech's Prolific. A large, late ripening variety; one of the best.

Missouri Mammoth. Rich and aromatic, one of the largest and handsomest. Bears young and prolifically.

Orange. Large; roundish, of a bright golden yellow color, flesh firm and tough until cooked, when it becomes tender, juicy and of excellent flavor. Tree has rather slender shoots and oval leaves; very productive. This is the variety most extensively cultivated for the fruit. Ripe in October.

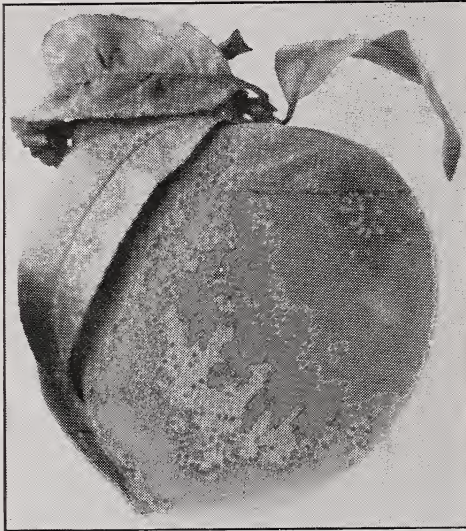
Pomona Wholesale Price for all Varieties of Quince Trees

Extra Size	2 Year Trees	4 to 6 Ft.	XXX	95c each	10 for \$9.00
Orchard Size	2 Year Trees	3 to 4 Ft.	XX	85c each	10 for \$8.00

Select Varieties of Peaches

Peach trees are easily cultivated, their comparative freedom from disease, the short period before they become productive, with the immense demand for the fruit and the facilities with which it may be shipped to distant markets, make peach growing extremely profitable, and there are few kinds of fruits more highly prized and more keenly relished.

LEADING VARIETIES. For the convenience of our customers who may not be entirely familiar with the best and most profitable varieties, we have given full description of such sorts in black face type. In making your selection, it will pay you to choose from among those varieties.



CHAMPION PEACH
Creamy White Freestone

Champion. Tree and fruit buds extremely hardy—has stood eighteen degrees below zero and produced a full crop the following summer. The flavor is delicious, sweet, rich and juicy; skin creamy white with red cheek, strikingly handsome. A good shipper. Last of Aug.

Kalamazoo. Large, golden yellow, with crimson cheek; flesh thick yellow, superb quality, small pit. Strong grower, early bearer, hardy and productive.

Salway. Large; deep yellow, red cheek. Flesh yellow, juicy. October.

Niagara Peach. One of the best medium early yellow peaches that has been introduced for many years past is the Niagara. The fruit of the Niagara peach is much like that of Early Crawford in appearance, being large, oval, yellow with brilliant red cheeks. The season is medium early, coming in just before Elberta.

Beer's Smock. Large, yellow, with red cheek; flesh yellow and of the very best quality for the season; a regular and enormous bearer, making it very desirable for market purposes.

Triumph. Earliest yellow-flesh peach, with good eating and shipping qualities, sure and abundant bearer; strong, vigorous grower.

Gold Drop. Medium size; hardy, very productive, quality the best, early bearer. Last of September.

Wager. Medium, yellow, good quality. Tree hardy and productive. A profitable late variety. Last of September.

Hiley. A large, early, white Peach highly colored on sun-exposed side. A profitable commercial variety, very hardy in wood and bud.

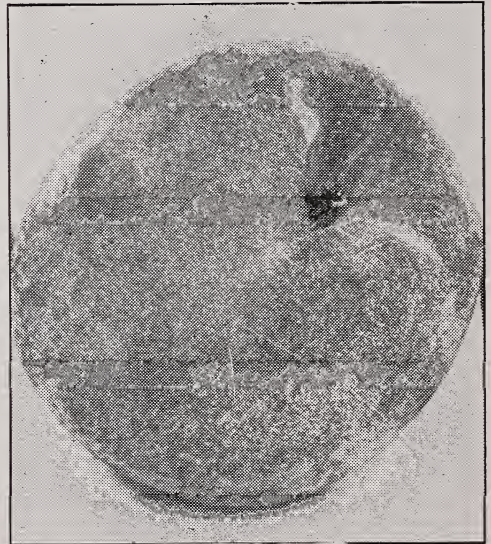
Matthews' Beauty. Fruit large; ripens two weeks later than Elberta. Skin golden yellow, streaked with red; flesh yellow, firm, excellent flavor. Perfect freestone.

Stump. Roundish, white, with bright red cheek; flesh white, juicy and good. Late. Sept.

Sneed. Very early; fruit creamy white with crimson blush; productive; not inclined to rot.

Hill's Chili. Medium; deep yellow shaded with dark red. Hardy, vigorous and productive. Good market variety. First of September.

Rochester. Early, good size, yellow free stone of fine quality, ready for market the middle of Aug.



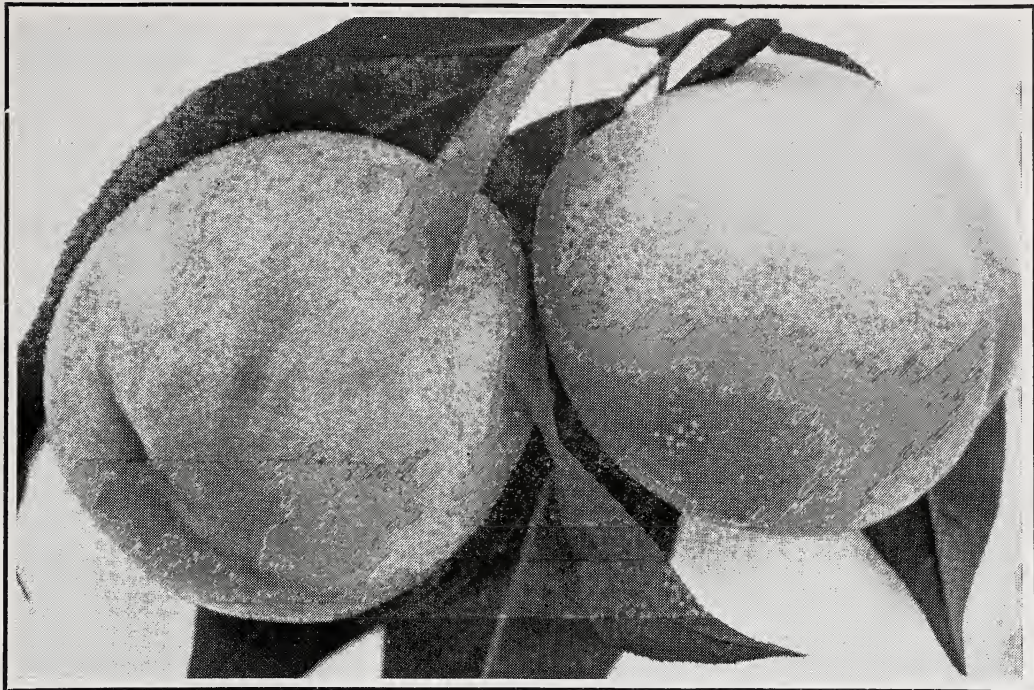
ROCHESTER PEACH

Pomona Wholesale Price for All Varieties of Peach Trees

Extra Size Trees	5 to 6 Feet	XXX	60 cents each	10 for \$5.50	100 for \$37.50
Medium Size Trees	4 to 5 Feet	XX	55 cents each	10 for \$5.00	100 for \$32.50
Orchard Size Trees	3 to 4 Feet	X	50 cents each	10 for \$4.50	100 for \$25.00

FREIGHT AND EXPRESS CHARGES PAID ON ALL ORDERS OF \$7.00 AND OVER TO STATES LISTED ON FIRST INSIDE COVER PAGE

Propagated Where the Best Trees Grow



ELBERTA—America's Greatest Shipping, Market and Canning Peach

- Crawford's Late.** Of large size; skin yellow or greenish yellow, with dull red cheek; flesh yellow. Tree vigorous; moderately productive; one of the finest late sorts. Last of Sept.
- Fitzgerald.** Fully equal to Crawford's Early in size, quality and color, a very early bearer, hardy, succeeding in Canada and in Michigan perfectly; fruit large, brilliant yellow with red cheek; highest quality.
- Carman.** A very hardy peach, ripening at same time as Early Rivers, yet almost as large as Elberta. Skin pale yellow with blush on sunny side; flesh white, tender, sweet and melting. Ships well. August.
- Early Rivers.** Large; color creamy white, with a delicate pink cheek, flesh melting, with a remarkably rich, racy flavor. Middle of Aug.
- Greensboro.** A valuable early white peach. Much larger in size than Alexandre, ripening about the same time. July.
- Crawford's Early.** A magnificent large yellow peach of good quality. Tree vigorous and prolific; its size, beauty and productiveness make it one of the most popular varieties. Season beginning of September. This valuable peach has long been a favorite for large size, beauty and quality of fruit.
- Belle of Georgia.** Large; white, with red cheek; flesh white, firm and of excellent flavor. Tree a rapid grower and very productive. July.
- Reeves' Favorite.** Yellow with beautiful red cheek. Tree fine and large; bears crop regularly.
- Willett.** Bright yellow, mostly covered with red. Flesh juicy and rich. September. Freestone.
- Elberta.** A valuable, large peach of good quality. The best orchard variety, and valuable also for planting in the garden. Elberta is hardier in bud than many varieties, therefore a more uniform cropper. Elberta is large, yellow, with red cheek, juicy and high-flavored, flesh yellow; freestone. Season medium early, following quickly upon Early Crawford.
- Crosby.** A remarkably fine peach for the home use or market. Ripens just before Crawford's Late. Middle of September.
- Chair's Choice.** Deep yellow, with red cheek; flesh yellow and very firm. October.
- Engle's Mammoth.** Large, round, suture slight; yellow with red cheek; flesh yellow, stone small, free; sweet, rich, juicy.
- Hale, J. H.** Large, attractive, yellow flesh, fine grained and unusually solid.
- Foster.** Large, deep orange red, becoming very dark red on the sunny side; flesh yellow, very rich and juicy.
- Banner.** Fruit large; deep yellow with crimson cheek; flesh yellow, excellent quality, rich, firm; equal to any as a keeper and shipper.
- Crosby Frost-proof Peach.** A fine, handsome, yellow peach, with remarkably small pit, that bears regular crops north of the peach belt. Quality delicious; season follows quickly after Early Crawford.
- Smock** Large size; light orange yellow with red cheek. Flesh yellow, juicy and rich. October.
- Yellow St. John.** One of the best of the early yellow varieties. Of medium size, orange yellow with a red blush on sunny side.

Select Varieties of Cherries

The Cherry grows best on gravelly soil, and there attains its highest perfection, but will do very well in almost any situation except a wet one. It is one of the most ornamental of all fruit trees which, with its delicious and refreshing fruit, makes it very desirable for planting near the dwelling, where beauty and shade, as well as fruit, are so desirable.



The most popular Cherry MONTMORENCY ORDINAIRE hardy and productive

Montmorency Ordinaire. The most popular of hardy cherries for market and home use. This cherry is planted largely. The fruit is in great demand by canning factories and others, and sells at fancy prices. Montmorency has been growing in popularity all over the country each year, so that it has been almost impossible to grow trees fast enough to keep up the demand. It is of large size, light red in color, stem rather short. The tree is very hardy and a vigorous grower.

Olivet. A tree of this variety should be in every garden. The fruit is very large, has a shining deep red color; tender, mild sub-acid flavor. Finest table and canning Cherry you can get. Ripens in June.

Louis Phillippe. Large dark red; flesh tender, mildly acid, good to best. Mid-July.

May Duke. Large red; juicy and rich; an old excellent variety; vigorous, productive. June.

Early Richmond. One of the most valuable and popular cherries, unsurpassed for cooking purposes. It is the good old variety that yields such marvelous crops in the gardens. The most hardy of all varieties, uninjured by the coldest winters. Tree slender in growth, with a roundish spreading head, exceedingly productive. Ripens through June.

Ostheime. Very hardy, fruit large and roundish. Flesh is liver colored, tender, juicy and almost sweet, although a sub-acid cherry.

Wragg. A Russian variety. One of the hardiest cherries, vigorous and productive, medium size, dark purple, fine quality and has produced annual crops at the northernmost limit.

English Morello. The most valuable late cherry. Easily grown, producing a heavy crop every year. Fruit dark red, quality good, with a rich, acid flavor; late. Tree very hardy, for extremely cold latitudes.

Pomona Wholesale Price for All Varieties of Fresh Dug Cherry Trees

Size	Age	Height	Grade	Each	10	100
Extra Size	2 Year Trees	5 to 7 Ft.	XXX	.95	\$9.00	\$35.00
Orchard Size	2 Year Trees	4 to 5 Ft.	XX	.90	8.50	75.00
Largest Size	1 Year Trees	3 Ft. and up	XXX	.85	8.00	70.00

FREIGHT AND EXPRESS CHARGES PAID ON ALL ORDERS OF \$7.00 AND OVER TO STATES LISTED ON FIRST INSIDE COVER PAGE

Select Varieties of Cherries

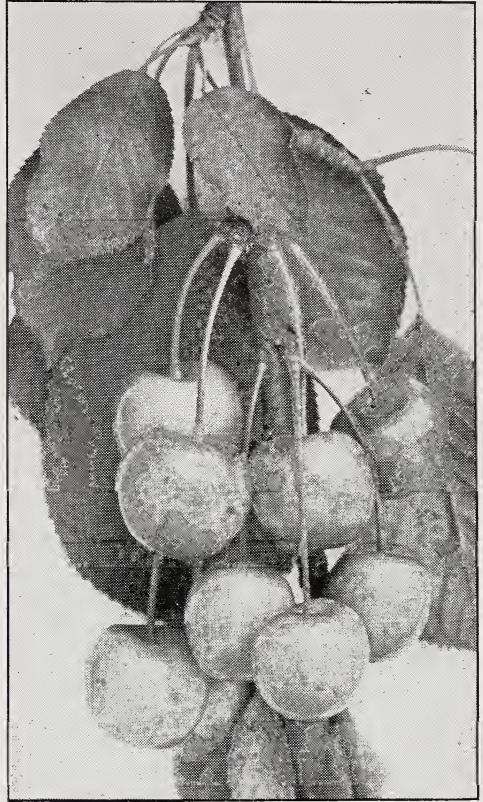
The fruit of which is heart-shaped with tender, sweet flesh and the trees rapid growers. With my experience in growing cherries I by all means urge every owner of a home with a little space to plant Sweet Cherry Trees. No fruit is more liked by members of the family than this delightful fruit when fresh picked, stewed or preserved.

Napoleon Cherry. Fruit very large, oblong, pale yellow, with a bright red cheek in the sun. Flesh very hardy, brittle, reddish at stone, juicy, and sweet. Tree a vigorous and erect grower, very productive. Early in July.

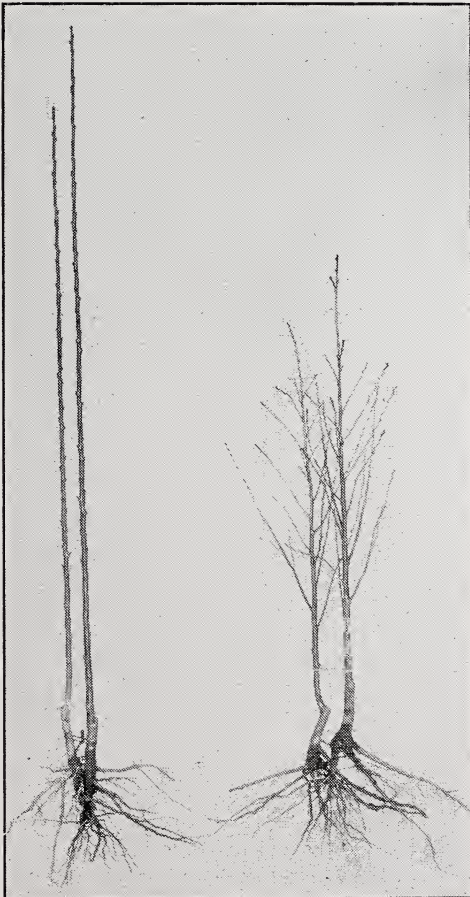
Bing. One of the most delicious Sweet Cherries grown. Tree very hardy and vigorous with heavy foliage. It succeeds in the East better than most sweet varieties. Fruit is large, dark brown or black and of very fine quality.

Black Tartarian. Very large; bright purplish black; half tender; juicy, very rich. Tree a remarkably vigorous and erect grower, and an immense bearer. One of the most popular varieties in all parts of the country. Ripe last of June.

Gov. Wood. One of the best. Clear, light red; tender and delicious. Tree vigorous and productive. End of June.



NAPOLEON CHERRIES (Reduced)



Sweet and Sour Cherry Trees, 1 Year, 3 Feet and Up

Lambert. A valuable Sweet Cherry of the largest size. Skin dark purplish red, almost jet-black when ripe. Flesh firm, rich and juicy. Tree hardy, a strong grower and an enormous bearer.

Yellow Spanish. Large, pale yellow, with red cheek; firm, juicy and excellent, one of the best light colored cherries; productive. Last of June.

Rockport. Fruit large, heart-shaped; skin pale amber; sweet and excellent. July.

Royal Ann. (Napoleon)—A valuable cherry of the largest size. Pale yellow, with bright red cheek; very firm, juicy and sweet; valuable for canning.

Black Heart. (Black Ox Heart)—An old variety; deep black; flesh tender, sweet. July.

Schmidt's Bigarreau. Black; flesh dark, firm. Very productive. Is one of the best firm fleshed cherries of the largest size. July.

Windsor. Fruit large; liver colored, resembling the Elkhorn, ripening a few days after that variety; flesh remarkably firm, of fine quality. Tree hardy and prolific. Vigorous. Middle of July.



Select
Varieties
of
Standard
Pear
Trees

Bartlett. Large, coloring when fully ripe to waxy yellow with red blush; juicy, melting, highly flavored. The tree bears early and abundantly. May be grown either as dwarf or standard, but succeeds best as standard. Aside from the fact that it bears early, regularly and abundantly, the Bartlett pear is justly popular on account of its size, beauty and excellence. It originated in Berkshire, Eng., about 1770. When introduced to this country its name was lost. Since it was cultivated and discriminated by Enoch Bartlett, it became universally known as the Bartlett. Aug. and Sept.

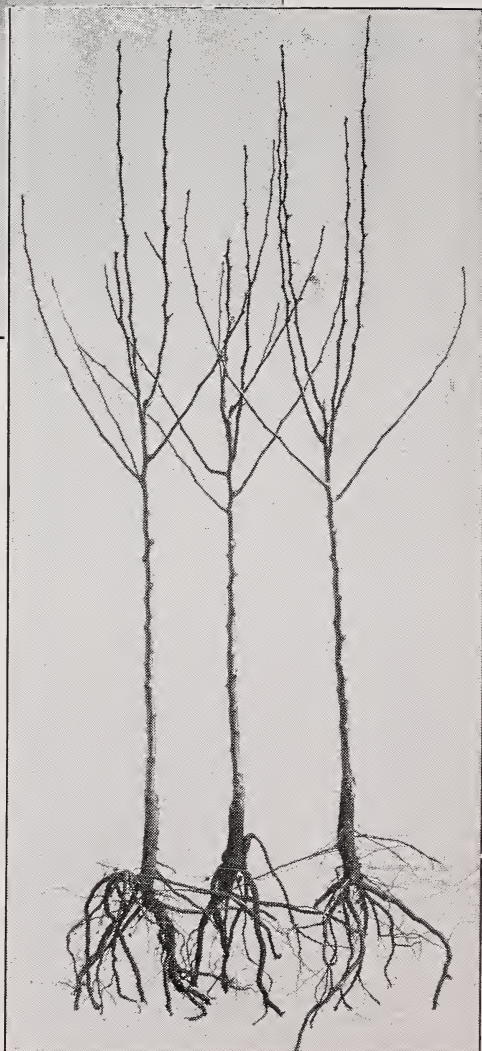
Seckel. Small size; yellowish russet, with red cheek; flesh whitish, buttery, very juicy and melting. The richest and finest variety known and extensively planted all over the country. A prolific bearer. Sept. to Oct.

Pomona Wholesale Price for All Varieties of Fresh Dug Pear Trees

Extra Size, 2 Yr. Trees, 5½ to 7 Ft., XXX
95c each, 10 for \$8.50, 100 for \$75.00.

Orchard Size, 2 Yr. Trees, 4½ to 5 Ft., XX,
75c each, 10 for \$7.00, 100 for \$70.00.

Large Size, 1 Yr. Trees, 3 Feet and Up, 70c
each, 10 for \$6.50, 100 for \$60.00.



STANDARD PEAR TREE 5½ to 7 Feet High

Propagated Where the Best Trees Grow



CLAPP'S FAVORITE
High Quality, Profit Making Pear

Howell. Large size; light-waxen yellow, sweet and melting; excellent quality; a strong and hardy grower and good bearer. Sept. to Oct.

Flemish Beauty. Large size; greenish yellow and brown; rich and juicy. An old and highly esteemed variety; a strong grower and a great bearer; hardy and desirable. Fruit almost covered with light russet, becoming reddish-brown when ripe. Large, beautiful.

Wilder. Handsome, melting, sweet, pleasant, with small core, fine grained, tender and juicy. Greenish yellow with brownish red cheeks. August.

Kieffer. A vigorous grower, an early and regular bearer and very productive, fruit large, rich yellow, tinged with red, somewhat russety, flesh white, buttery and juicy. A good canning pear. October.

Seckel. Color; bright red on one side and light golden on the other. Very hardy; bears young, and is an enormous producer.

Anjou. For late fall and early winter use, there is no better variety. Quality Equal to Bartlett. A close second to Bartlett in public favor. Distributes its fruit well, and sands up under a load better than Bartlett. Equal in quality to Bartlett and holds up longer.

LEADING VARIETIES. For the convenience of our customers who may not be entirely familiar with the best and most profitable varieties, we have given full description of such sorts, in black face type. In making your selection, it will pay you to choose from among those varieties.

FREIGHT AND EXPRESS CHARGES PAID ON ALL ORDERS OF \$7.00 AND OVER TO STATES LISTED ON FIRST INSIDE COVER PAGE

Bosc. (Beurre Bosc.) Standard only. Very large, a beautiful russet colored pear, with a very distinct shape, having a very long neck, of very high quality having a distinct rather melting, buttery flavor. This pear is generally conceded to be a very high quality.

Beurre Claireau. Very large; light yellow, shaded with crimson and russet; an early and abundant bearer. January.

Winter Nelis. Medium size, greenish yellow, spotted with russet. Melting and of finest quality; bears heavy crops. Nov. to Dec.

Clapp's Favorite. Large Size; pale lemon yellow; flesh fine grained, juicy, melting, rich and buttery, earlier than Bartlett and resembling the Flemish Beauty in growth. A good grower and productive.

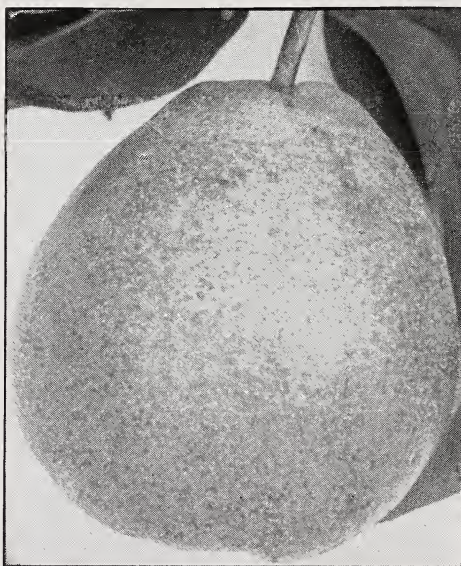
President Drouard. Highly recommended for its rich flavor and great keeping qualities. Tree a vigorous grower. Fruit large and handsome; melting and juicy. Mar. to May.

Lawrence. Above medium size, yellow, tender and melting; quality best; one of the best winter pears. In season during mid-winter.

Sheldon. Large size; roundish; greenish yellow, mostly covered with thin light russet; very juicy, melting, sweet and vinous; a fine grower and good bearer. Oct. to Nov.

Duchess d' Angouleme. Very large; of greenish yellow, with patches of yellow and a dull red cheek; a vigorous and strong grower and a good bearer while quite young. Oct. to Nov.

Louise Bonne de Jersey. Large size, pale green in the shade but overspread with brownish red in the sun; very juicy and melting with a rich and excellent flavor.



ANJOU PEAR—Delicious Flavor

Select Varieties of Plums

Burbank. The best and most profitable among growers for market; ripens 10 to 14 days after Abundance. Burbank is one of the best of Japan Plums. Unsurpassed for beauty and productiveness, as well as great hardiness of tree, with a foliage so perfect as to contribute in an essential degree to its health. Fruit large, oval often with a slight neck; skin reddish purple; flesh yellow, juicy and good. Its beauty and value as a market variety is unsurpassed.

Wickson. Fruit remarkably handsome, very large, long, heart-shaped, color deep maroon red covered with white bloom; flesh firm and meaty, yellow, rich and aromatic; cling; pit small. Tree an upright vigorous grower. Excellent keeper and shipper, is being planted largely for market. Early September.

Shipper's Pride. The fruit is of a large size, dark purple; excellent for canning and an unusually good shipper.

Shropshire Damson. An english variety of great merit for preserving. Large. Oct.

Yellow Egg. A large beautiful egg-shaped yellow plum. Last of August.

Geuii. Fruit large, roundish, oval; skin dark purple, covered with thick blue bloom; flesh yellow.

Reine Claude. A delicious greenish-yellow Plum, spotted with red. It is of the finest quality and the housewife's ideal Plum for canning and preserving. September.



Burbank Plum Fruiting on a wire Trellis

Abundance. The popular plum. Tree thrifty, hardy and beautiful; fruit large, showy and good, richly perfumed. "From one Abundance tree we picked ten pecks of fruit. The quality is excellent. When fully ripe they are full of juice. The flesh is tender, and there is mingled with the plum a peach flavor that is refreshing and agreeable." First of August.

Beauty of Naples. Size large, color greenish-yellow, flesh firm, juicy and very fine flavored. September.

Felleberg. A fine late prune; oval, purple; flesh juicy and delicious. September.

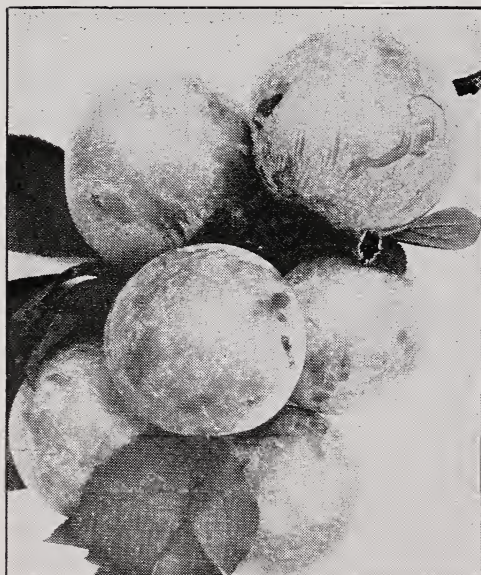
German Prune. A large, long oval variety, much esteemed for drying; color dark purple; of very agreeable flavor. Sept.

Coe's Golden Drop. Large and handsome. Last of September.

Grand Duke. Fruit oval with a short neck. Skin dark, almost a darkish purple.

Green Gage. Small; considered the standard of excellence; slow grower. August.

Red June. Recommended as "by all odds the best Japanese Plum, ripening before Abundance." One of the vigorous, upright growers; productive; fair size, vermilion red; pleasant quality. Ripens a week before Abundance. August.



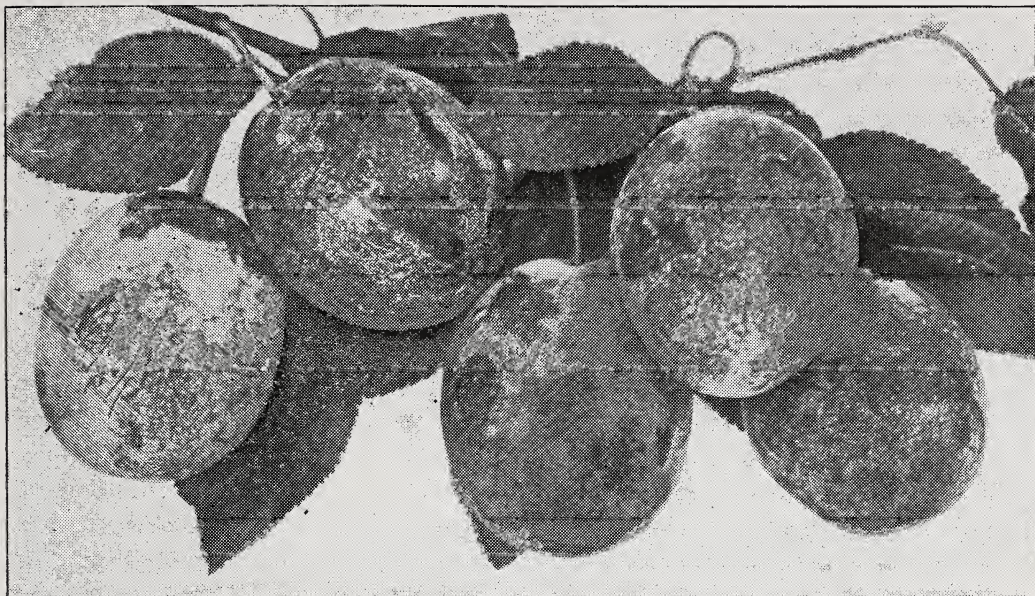
Red June Plum

Pomona Wholesale Price for All Varieties of Fresh Dug Plum Trees

Size	Age	Height	Grade	Each	10	100
Extra Size	2 Year	5½ to 7 Feet	XXX	.95	\$9.00	\$85.00
Orchard Size	2 Year	4½ to 5 Feet	XX	.90	8.50	75.00
Smaller Size	2 Year	3 to 4 Feet	X	.55	5.00	45.00

FREIGHT AND EXPRESS CHARGES PAID ON ALL ORDERS OF \$7.00 AND OVER
TO STATES LISTED ON FIRST INSIDE COVER PAGE

Propagated Where the Best Trees Grow



LOMBARD PLUMS—Tree Hardy and Productive

Lombard. A great favorite because it is a wonderful and early bearer and a hardy strong grower.

Imperial Gage. Fruit large, oval; skin pale green, flesh juicy, sweet, rich and excellent.

Niagara. Unsurpassed for beauty and productiveness as well as great hardiness of tree. Fruit large, oval often with a slight neck.

Monarch. It is roundish oval in shape and dark purplish blue in color.

Bradshaw. This is a very large, dark violet red plum, very juicy and good. The quality of Bradshaw is very fine and is very popular wherever planted.

For Pomona Wholesale Price for all Varieties of Plum Trees See Page 22.

Tatge. Evidently a seedling of the Lombard. Is larger, more nearly round, darker color and finer quality than that well known and excellent variety.

Pond's Seedling. Tree a vigorous grower and most abundant bearer. One of the most attractive in cultivation. September.

York State Prune. Originated in Dansville. Large size and resembles German Prune in shape and color. Small stone and very free. Very valuable for commercial planting.

Moore's Arctic. A very abundant and early bearer. Fruit ripens first of September. This is a purplish-black Plum with a thin blue bloom; flesh greenish-yellow, juicy and sweet.

Select Varieties of Nut Trees

Chestnut American Sweet is adapted to a great portion of this country. It is valuable as a nut producing tree, timber and ornamental purposes.

Wholesale Price of 3 to 4 ft. trees, 95c each. 4 to 5 ft., \$1.25 each. 5 to 6 ft., \$1.75 each.

Chestnut Spanish. A handsome round-headed tree, producing abundantly, very large nuts that find a ready market.

Wholesale Price of Spanish Chestnut trees, 3 to 4 feet, \$1.00 each.

Butternut. A fine native tree producing a large, longish nut, which is prized for its sweet, oily nutritious kernel.

Wholesale Price of Butternut trees, 4 to 6 feet, \$1.50 each.

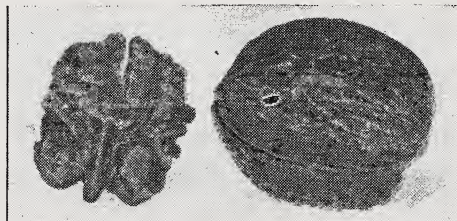
Pecans. This nut is very productive.

Wholesale Price, 3 to 4 feet, \$1.50 each.

Hickory, Shellbark, 3 to 4 ft., \$2.50 each.

Filbert, American, 3 to 4 ft., \$1.25 each.

Filbert, English, 4 to 5 ft., \$1.50 each.



Walnut, English. A fine, lofty, growing tree, with handsome, spreading head; produces large crops of thin-shelled, delicious nuts which are always in demand at good prices. Every home garden should have one or more English Walnuts. Tree very hardy.

Wholesale Price, 3 to 4 feet, \$1.75 each.

Walnut, Black. The common well-known Black Walnut, the wood of which is most beautiful and valuable. It is very productive in nuts,

Wholesale Price, 4 to 6 feet, \$1.50 each.

Pomona Varieties of Grapes at Reduced Prices

The Grape is one of our most delicious fruits. Contrary to common opinion it does not demand a special or particular kind of trellis. We have seen them bear by the bushel growing on a garden or yard fence. Hardy, thrifty, free of disease, the grape is our standby.



CONCORD
The Best Black Grape

✓ **Concord.** Bunch large, shouldered, compact; berries large, covered with a rich bloom. Vine a strong grower, very hardy.

Campbell's Early. (Black)—Strong grower, with large, healthy foliage; productive, its keeping and shipping qualities are equaled by no other early grape.

Moore's Early. (Black)—Bunch and berry large, round with heavy blue bloom; vine exceedingly hardy. Its earliness makes it desirable for an early market.

Agawam (Roger's No. 15). Berries very large, thick skin, pulp soft, sweet, sprightly, very vigorous, ripens early.

Diamond. Leading early white grape, ripening before Moore's Early.

Pocklington. One of the largest and most showy white grapes of the Concord type.

✓ **Catawba.** Berries large, round; when fully ripe of a dark copper color.

Lindley (Roger's No. 9). Berries medium to large; flesh tender, sweet and aromatic.

Salem (Roger's No. 53). Bunch large, compact; berry large, round, coppery red, tender, juicy. Ripens with Concord.

Delaware. Red, finest flavor. Bunch and berry small, compact; sweet, thin skin; slow grower; requires good soil.

Diamond White. The leading early white grape, ripening before Moore's Early. White, with rich yellow tinge; juicy, few seeds, almost free from pulp, excellent quality; above medium size, adheres firmly to stem.

McPike. This mammoth black grape has been exhibited in all parts of the country. Its great size, fine flavor and beauty create quite a sensation. The bunches are large.

Worden. (Black)—A splendid grape of the Concord type, larger, better quality and earlier. Vines vigorous, hardy and productive.

Chas. A. Green White. Claimed by the introducer to be a new and valuable variety, a vigorous grower and an enormous yielder of very large and beautiful clusters of excellent fruit.

Brighton. Perhaps the best red grape in cultivation. Bunch large, compact; strong grower and very productive; quality good.



✓ **Niagara White.** Occupies the same position among the white varieties as Concord among the black; the leading profitable market sort. Bunch and berries large, greenish white changing to pale yellow when fully ripe.

COLLECTION OF GRAPE VINES

10 Strong 2 Year Vines for \$1.95

2 Worden 2 Concord 2 Chas. A.
2 Niagara 2 Brighton Green

All Strong 2 Year Vines for \$1.95

Every garden has room for a few
Grape Vines

Pomona wholesale price for all varieties of Grapes on this page.
Strong 2 year vines, 25 cents each, 10 for \$2.25, 100 for \$20.00.

SPECIAL PRICES ON CONCORD GRAPE VINES

Strong 2 year vines, 100 for \$15.00, 1000 for \$120.00. Strong 1 year vines, 100 for \$12.00, 1000 for \$100.00.

Propagated Where the Best Trees Grow

RASPBERRIES

Will do well on any soil that will produce a good corn crop. Land should be thoroughly prepared and well enriched; ground bone is one of the best fertilizers. Keep well cultivated and free from weeds and suckers. As soon as they have done bearing, cut out the old wood to give more vigor to the young canes. Plant in rows five feet apart, three feet apart in rows.

Red Varieties

St. Regis Everbearing. A wonderful new variety of Red Raspberry, bears fruit the first season, bears for four months beginning about June fifteenth. The second crop of berries is borne on the ends of the new canes and ripens about the middle of August and continues until frost.

Cuthbert. Large, conical; deep rich crimson; firm, of excellent quality. Vigorous grower, entirely hardy and immensely productive. The best raspberry for general culture.

Marlboro. The best early red raspberry. Hardy and productive.

Loudon. Ripens with the earliest and hangs to the last. Immensely productive and a fine shipper. Very hardy and does not sucker nearly so much as other red raspberries.

Binghamton, N. Y., May 22, 1923.

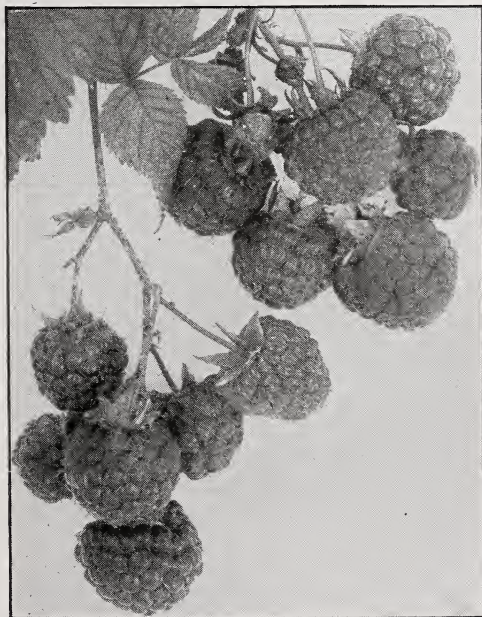
The nursery stock you shipped me is sturdy and healthy looking.

The berry bushes are fine with well developed roots, much better than some I got from Rochester for which great claims were made, and for which I paid 55c apiece. Fortunately, however, I only got stung for a dozen.

Yours truly,
BURTIN D. SAINT.



KANSAS BLACK RASPBERRY



CUTHBERT RASPBERRY

Pomona Price for all varieties of Raspberries by express, Strong Plants
10 for \$1.00, 25 for \$1.50, 100 for \$4.75, 1000 for \$35.00.

Black Varieties

Kansas. Largest size, strong, vigorous grower, hardy bearing immense crops. Size of Gregg.

Black Diamond. One of the best for home and market use. For drying and evaporating it excels all others. The fruit is large and handsome.

Cumberland. Plants vigorous, hardy and productive; fruit large. Mid-season.

Gregg. Plants vigorous, hardy and productive; fruit above medium to very large.

Plum Farmer. Berry large and very productive, a great favorite in Western New York. A fine picker and one of the best market sorts.

Ohio. A very strong growing hardy sort; fruit nearly as large as Mammoth Cluster; more productive.

Purple Varieties

Columbian. Very large, often an inch in diameter; adheres firmly to stem and will dry on the bush if not picked.

Select Varieties of Blackberries



This profitable fruit should be planted for garden use in rows five feet apart, with plants three feet apart in rows; for market, in rows six feet apart, with plants three feet apart in the rows. Give the plants the same cultivation as for raspberries.

Eldorado. The best all-round berry yet produced, combining nearly all the good qualities found in a blackberry. The vines are very hardy and vigorous, enduring the winters of the far Northwest without injury, and their yield is enormous. The berries are large, jet black, borne in large clusters and ripen well together; they are very sweet, melting, have no hard core and keep for eight or ten days after picking with quality unimpaired.

Snyder. Extremely hardy; enormously productive; medium size.

Wilson's Early. Large size, black, quite firm, rich, sweet and good. Ripens early and matures its fruit rapidly; retains its color well after picking.

Minniewaska. Wonderful, hardy, productive, good blackberry, has not been forgotten by us, or our old patrons. Its principal points are hardiness, excellent quality, earliness, and continued bearing and productiveness.

Early Harvest. The earliest blackberry and valuable for market. The canes are strong and upright in growth and enormously productive. Berries sweet and of the highest quality.

Erie. Bush vigorous; berry large, round; good quality; early and productive.

Agawam. Ripens earlier than other kinds, and has a flavor similar and equal to the wild berry. Very hardy.

Ancient Briton. Bush hardy and very productive. One of the best old sorts, and still grown in immense quantities by successful market gardeners.

Blower. Large size, jet black, good shipper, best quality, unexcelled productiveness are the main characteristics of this splendid new sort.

Rathbun. Bush perfectly healthy, vigorous, but not a high growing sort; very rarely suckers from the roots. Fruit of largest size, highest quality, borne in great profusion.

Wolcott, N. Y., Feb. 13, 1924

Wells, are you still alive and doing business? If so, I would like to hear from you.

You will remember selling me in 1914 sufficient apple trees to set an orchard of ten acres. Well, these trees came. I set them and they have proved satisfactory.

My Greenings have been bearing for the past four years. I am in need of several hundred more trees this spring.

Will you please quote me and offer any suggestions that you see fit.

Very truly yours,

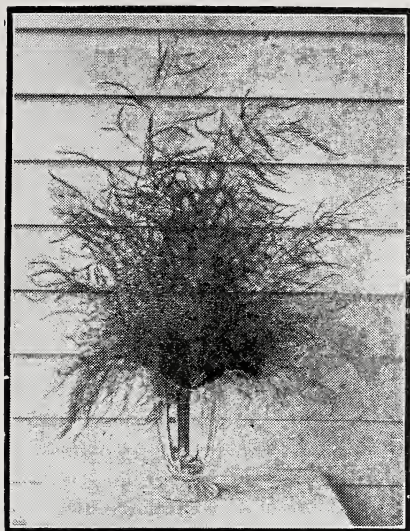
D. W. Wadsworth

Pomona Wholesale Price for all varieties of Blackberries, Strong Plants, (by express)

10 for \$1.25, 25 for \$1.75, 100 for \$6.50, 1000 for \$50.00.

Propagated Where the Best Trees Grow

Select Varieties of Asparagus



Conover's Colossal Asparagus. A standard variety of large size, tender and excellent quality. This variety is known everywhere. You will get more satisfaction out of a bed of asparagus than any other vegetable.

Wholesale Price for strong 2 year roots of Conover's Asparagus, 25 for \$1.00, 100 for \$2.25, 1000 for \$15.00.

Palmetto Asparagus. A very early variety; even, regular size, of excellent quality. No home garden can be complete without it. This is a large growing variety, particularly delicious in quality. Plant in rows 3½ feet apart, and one foot apart in the row. Let the lower ends of the roots extend down as far as they can but do not cover the crowns deep when planting.

Wholesale Price for strong 2 year roots of Palmetto Asparagus, 25 for \$1.00, 100 for \$2.25, 1000 for \$15.00.

Linnaeus Rhubarb. Large, early, tender and fine. The very best of all which is a good paying, all season crop. There is a constant demand for it.

Price of Rhubarb, strong 2 year roots, 20 cents each, 10 for \$1.75, 100 for \$15.00.

Select Varieties of Gooseberries

Plant in good rich soil and give a liberal dressing of manure every season. Regular pruning every year is essential for the production of fine fruit.

Downing. Large, handsome pale green, and of splendid quality for both cooking and table use; bush a vigorous grower.

2 Year Bushes 45c each, 10 for \$4.00.

Houghton's. Small to medium; roundish, oval, pale, sweet tender, very good; plants spreading; shoots slender.

2 Year Bushes 45c each, 10 for \$4.00.

Columbus. Fruit of largest size, oval, handsome, a greenish yellow, finest quality. Plant a strong robust grower, free from mildew.

2 Year Bushes 45c each, 10 for \$4.00.

Red Jacket. A new red berry of large size and good quality; hardy and very productive.

2 Year Bushes 50c each, 10 for \$4.50.

Josselyn. Large size, smooth, prolific and hardy, of best quality. Have been tested over a wide extent of territory by the side of all the leading varieties, and so far is the freest from mildew.

2 Year Bushes 45c each, 10 for \$4.50.

Due to a Federal Quarantine, we can only ship to the following states Currant and Gooseberry Bushes: Connecticut, Illinois, Indiana, Massachusetts, Michigan, New Jersey, Ohio, New York and Pennsylvania.

Select and Best Varieties of Currants

The Currant is one of the most productive and best paying small fruit that we have. There is, we believe, more profit to the acre in currants than any other small fruit.

Wilder. (Red)—Very large; deep red; bunches long. Plants erect, stout, vigorous and productive.

Fay's Prolific. (Red)—A cross between Cherry and Victoria. Of large size, fine flavor, and

claimed to be twice as prolific as the Cherry.

Red Cross. A strong growing variety. Cluster long; berry medium to large, bright red; quality good to best. Very productive.

Wholesale Price for all varieties of Currants 2 year bushes, 30 cents each, 10 for \$2.50, 100 for \$20.00, 500 for \$75.00, 1000 for \$125.00.

Hillsboro, O., Nov. 26th, 1924

Trees came in fine condition. Never saw trees put up more *neatly* and *better*. Very much pleased.

W. E. Lucas.

Orangeville, Pa., April 3rd, 1924

I bought trees of you several years ago, which have done fine, all bearing *now True to Name*.

U. C. Whitenight.

Select Varieties of Strawberries

The Strawberry delights in good, rich, moist soil, but will grow on any soil which is capable of raising good general crops. By planting early, medium and late varieties, the grower is supplied with fruit during the entire strawberry season. In hill culture plant 15 inches apart each way, in beds 4 feet wide, with alleys of 2 feet between. For matted rows, plant 1 foot apart in rows 4 to 5 feet apart.

NOTE:—Do not order strawberry plants sent by freight. Our patrons order from 50 to 500 trees, and 500 or more strawberry plants by freight. Now the trees should go by freight and the strawberries by express, or small lots by mail. In all cases when desired by mail, add postage at rate of 20c per 100. Always state plainly that the strawberry plants are to be sent by express or mail.

Senator Dunlap. A well tested, early variety, one of the safe sorts to plant everywhere. Fruit good size, regular form, beautiful bright red, glossy, firm, splendid keeper and shipper, excellent quality, one of the best for canning.

Jessie. Large, handsome, roundish conical; firm; of good quality. Plant vigorous and productive. One of the best for home market. Sea-

Wilson's Albany. The old standard sort for preserving and canning.

Haverland. Large long, bright red; a great yielder. One of the best of recent introduction.

Glen Mary. An exceedingly attractive berry, as large as the Sharpless. Color a bright glossy crimson and so handsome that it brings the highest prices in market; moderately firm, and fine in flavor. The plant is vigorous, healthy and very productive, and the berries maintain their large size until the close of the season.

Brandywine. A very late and firm berry; a good shipper, good canner, a good all around strawberry. Season medium to very late.

Sample. Late, of large size and yields enormous quantities of high quality bright red berries. A standard shipping variety.

Pomona Wholesale Price for all varieties of Strawberries, (except Fall Bearing,) (by express) 25 for \$1.00, 100 for \$1.95, 1,000 for \$15.00. By mail postpaid, 25 for \$1.15, 100 for \$2.25.



CORSICAN

Corsican. Is a great strawberry for many reasons. First, it is the biggest berry; second, it is the brightest and best in color; third, it is a great yielder, and producer; fourth, and the most important of all, the foliage is exceedingly vigorous and leathery.

Fall or Everbearing Varieties



Americus. Plant medium sized, foliage medium; fruit light red, heart shaped, of fine texture, has a good heavy root system, a fairly good plant maker, blossoms strongly staminate, good quality.

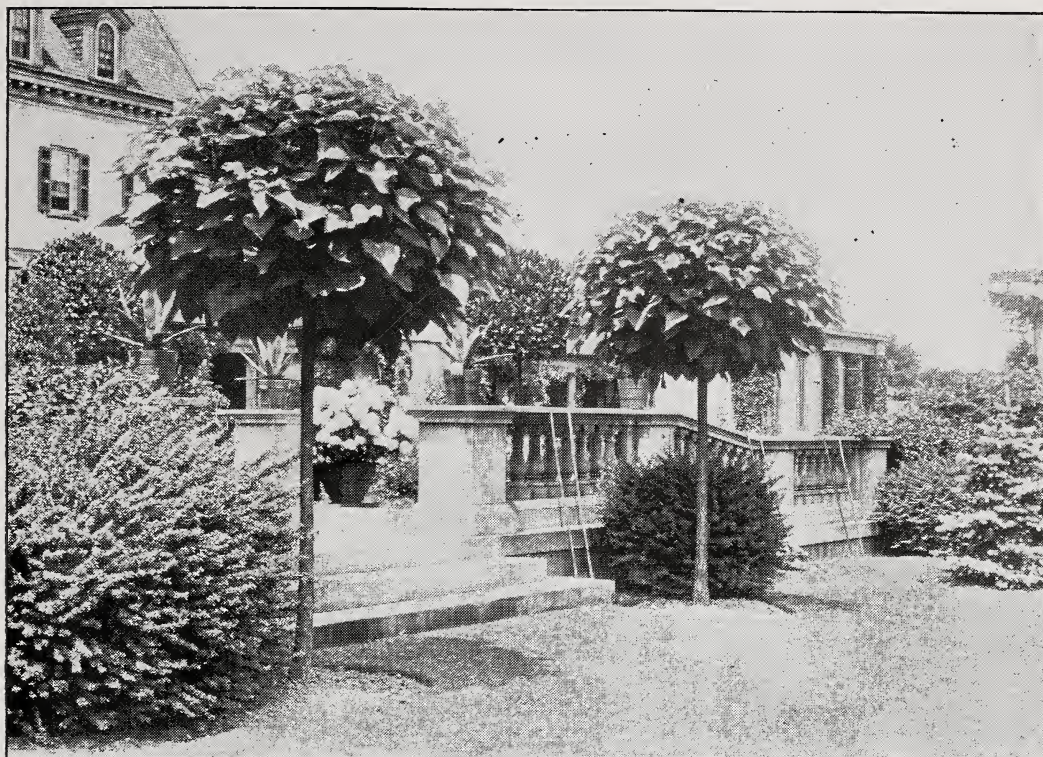
Productive. seedling of Pan-American and Autumn. Plants model growers, large, deep rooted, sturdy and hardy. Berries medium to

large in size with prominent seeds on the outside, making it a good keeper and shipper.

Superb. The plants of Superb are of good, average size, are strong growers and stand the winters best of all kinds tested. The fruit is very large, roundish, dark-colored, glossy, attractive and smooth. It has the finest flavor.

Pomona Price for all Fall or everbearing varieties (by Express) 10 for \$1.50, 25 for \$2.50, 100 for \$6.00. By mail postpaid, 10 for \$1.50, 25 for \$2.60, 100 for \$6.25.

Ornamental Trees



Barberry Thunbergii

Two Catalpa Bungeii (Umbrella Tree)

Catalpa, Bungeii, (Umbrella Tree). Perfectly hardy and flourishes in almost all soils and climates with an umbrella shaped top without pruning.

Price, 3 to 4 ft. trees, \$1.00 each, 10 for \$9.00.
 Price, 4 to 5 ft. trees, \$1.25 each; 10 for \$10.50.
 Price, 5 to 6 ft. trees, \$1.75 each, 10 for \$15.00.
 Price, 6 to 8 ft. trees, \$2.50 each, 10 for \$22.50.

Oak, American. Tree has spreading branches with a broad open head.

Price, 6 to 8 ft., \$2.50 each.

Oak, Pin. Tree of pyramidal shape with beautiful crimson leaves in fall.

Price, 5 to 6 ft., \$2.50 each.

Mulberry, Downing. Yields an abundance of large refreshing berries for about three months. Suitable for lawn planting.

Price, 5 to 6 ft. \$1.25 each.

Mulberry, Russian. A very hardy rapid growing tree. Fruit a medium size and a great bearer. Largely planted in the west for timber.

Price, 5 to 6 ft., 60c each; 10 for \$5.00; 6 to 8 ft., 95c each; 10 for \$8.50.

Oak, Scarlet. Valuable for its brilliant fall coloring.

Price, 6 to 8 ft., \$2.75 each.

Ailanthus, (Tree of Heaven). Unexcelled for city planting. Tropical foliage.

Price, 5 to 6 Feet, \$1.25 each.



Kilmarnock Weeping Willow

Salisbury Maiden's Hair. Pyramidal tree with fan shaped leaves. Very attractive.

Price, 6 to 8 ft., \$1.25 each.

Willow, Kilmarnock. Branches spreading and drooping, forming an umbrella like head.

Price, 1 yr. heads, \$3.50 each.

Mulberry, Tea's Weeping. A weeping variety of the now well known Russian Mulberry. Perfectly hardy, withstands the coldest winters.

Price, 2 year heads \$3.00 each.



Tea's Weeping Mulberry

Ornamental Trees



AMERICAN ELM

Elm, American. A graceful drooping branched tree. A great favorite with the American people.

Price, 6 to 8 ft. trees, \$1.00 each, 10 for \$9.00.
 Price, 8 to 10 ft. trees, \$1.50 each, 10 for \$13.50.
 Price, 10 to 12 ft. trees, \$2.25 each, 10 for \$20.00.

Horse Chestnut (White Flowering) Has white flowers in May. Very hardy, succeeding everywhere planted.

Price, 4 to 5 ft., \$2.00 each; 5 to 6 ft., \$2.50 each.

Laburnum, (Golden Chain). Has long pea shaped, yellow flowers in June, resembling wisteria. A very attractive tree with dark green foliage.

Price, 4 to 5 ft., \$1.50 each.

Larch, European. Very ornamental. Pyramidal growth. Planted largely in connection with evergreens.

Price, 3 to 4 ft. high, \$1.50 each.

Linden, American, (Bass Wood). Fragrant yellow flowers in July. Leaves are large, smooth and showy.

Price, 6 to 8 ft., \$1.50 each; 8 to 10 ft., \$2.50 each.

Poplar, Carolina. Tall spreading tree, invaluable for quick shade or screen.

Price, 6 to 8 ft., 35c each; 10 for \$3.00; 8 to 10 ft., 50c each; 10 for \$4.50; 10 to 12 ft., 60c each; 10 for \$5.50.

Poplar, Lombardy. Erect growth. Used extensively for screens and wind breaks.

Price, 6 to 8 ft., 60c each; 10 for \$5.00; 8 to 10 ft., 75c each; 10 for \$5.50.

Alder, (European). Remarkable fast growing tree, with wedge shaped foliage.

Price, 5 to 6 Feet, \$1.50 each.

Ash, (American). Smooth gray bark with glossy leaves, not subjected to the attacks by insects.

Price, 5 to 6 Ft., 90c. each; 6 to 8 Ft., \$1.25 each.

Peach, Double Red and Double White Flowering. Has beautiful double flowers in May.

Price, 2 to 3 ft., 75c each; 3 to 4 ft., \$1.00 each. Mention color wanted when ordering.

Birch, Cut Leaf, (Weeping). White bark, drooping branches, finely cut foliage.

Price, 2 to 3 ft. trees, \$1.50 each, 10 for \$13.50.
 Price, 3 to 5 ft. trees, \$2.50 each, 10 for \$22.50.
 Price, 5 to 6 ft. trees, \$3.50 each, 10 for \$32.50.

Birch, (European White). Beautiful white bark, spray like branches.

Price, 4 to 6 ft., \$1.25 each; 6 to 8 ft., \$2.00 each.
 8 to 10 ft., \$2.50 each.

Catalpa, Speciosa. Fragrant white flowers in July. Open irregular growth, large heart shaped leaves.

Price, 6 to 8 ft., \$1.00 each; 8 to 10 ft., \$1.50 each.

Crab, Bechtel's Flg. Especially adapted for massing among shrubbery. Pink rose like flowers in May. A very attractive flowering shrub.

Price, 2 to 3 ft., \$1.25 each; 3 to 4 ft., \$1.50 each.

Prunus Triloba, Double Flowering Plum.

A highly interesting and desirable addition to hardy shrubs. Flowers double delicate pink.

Price, 3 to 4 ft. trees, \$1.00 each.

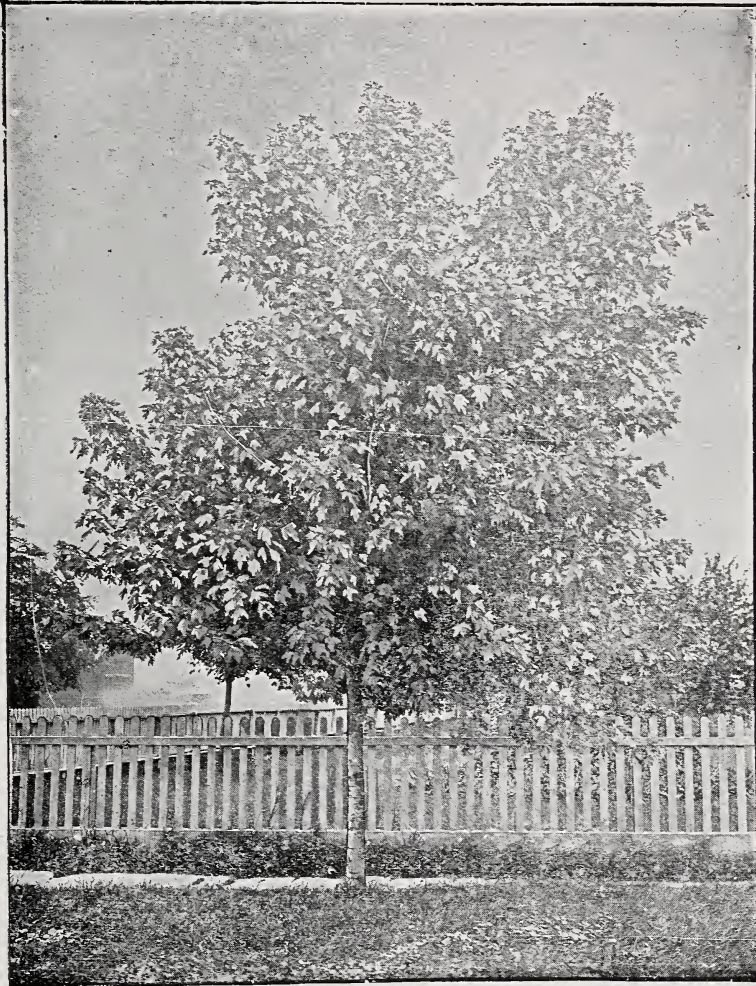
Elm, Camperdown. A very popular weeping tree. A vigorous and strong grower.

Price, one year heads, \$3.00 each.



BIRCH CUT LEAF (Weeping)

ORNAMENTAL TREES



SILVER-LEAVED MAPLE

Maple, Ash Leaf. Fast growing, has spreading habit. Leaves light green.

Price, 5 to 6 ft., 60c each; 10 for \$5.00; 6 to 8 ft., \$1.00 each; 10 for \$9.00; 8 to 10 ft., \$1.50 each; 10 for \$12.00.

Maple, Japan Blood-leaf. Bright red foliage with delicate cut leaf.

Price, 18 to 24 in., \$6.00 each.

Maple, Norway. Round headed tree with dark green foliage. Largely used for street and shade.

Price, 6 to 8 ft., \$2.25 each; 10 for \$20.00; 8 to 10 ft., \$3.00 each; 10 for \$27.50; 10 to 12 ft., \$4.50 each.

Maple, Scarlet or Red. Handsome, with color changing foliage crimson to green, red and brown.

Price, 6 to 8 ft., \$1.50 each; 10 for \$12.50.

Maple, Silver Leaf. A rapid growing maple of spreading habits, excellent for sandy soil. Foliage silvery on under side.

Price, 4 to 6 ft. 50c each; 10 for \$4.50; 6 to 8 ft., 95c each; 10 for \$8.00; 8 to 10 ft., \$1.25 each; 10 for \$10.50; 10 to 12 ft., \$1.75 each; 10 for \$15.00.

Maple, Schwedlerii. Purple or red leaf Norway maple. The foliage darkens to a bronze green as the season advances.

Price, 6 to 8 ft., \$4.50 each; 8 to 10 ft., \$5.50 each.

Maple, Sugar, Hard. Straight and spreading, dark green leaves turning to scarlet in the autumn.

Price, 6 to 8 ft., \$1.85 each; 8 to 10 ft., \$2.50 each.

Maple, Sycamore. Horizontal and spreading, with round head. Bark is smooth. Leaves are large.

Price, 6 to 8 ft., \$1.75 each; 8 to 10 ft., \$2.00 each.

Maple, Weirs Cut-leaf. A drooping tree with finely cut foliage. One of the finest lawn trees.

Price, 4 to 6 ft., \$1.25; 10 for \$10.00. 6 to 8 ft., \$1.75 each; 10 for \$15.00.

Mountain Ash, American. White flowers in June, followed by very attractive scarlet berries that hang until late in fall.

Price, 6 to 8 ft., \$1.50.

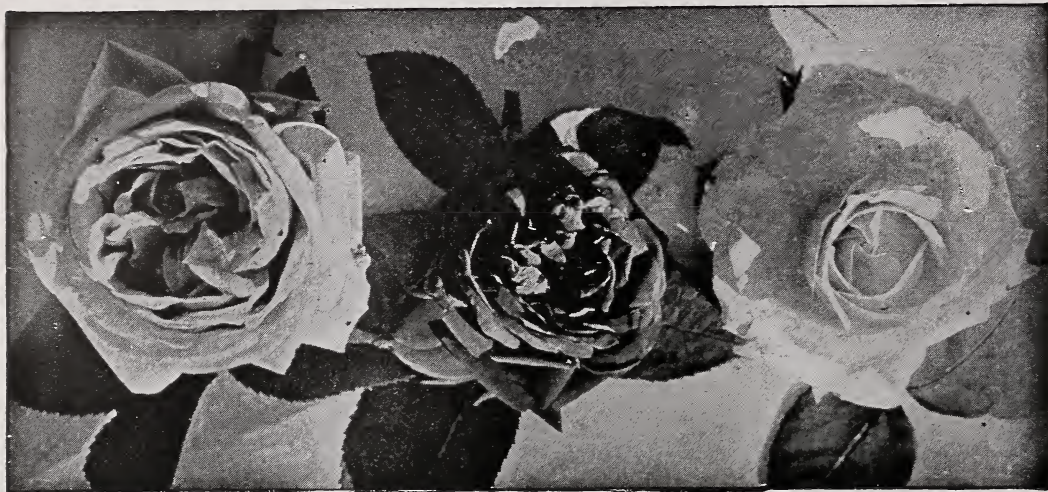
Prunus Pissardi, Purple-leaf Plum. The finest purple leaf small tree or shrub.

Price, 4 to 5 ft., \$1.00 each, 10 for \$9.00.

Select Varieties of Roses

In spite of all the flowers which from time to time have become popular and have had their day as "fads," the Rose, the "Queen of Flowers," still holds her scepter and compels all others to acknowledge her queenly right and beauty.

The Roses which we offer below are all strong two-year field-grown bushes, American-grown.



MARSHALL P. WILDER

MAGNA CHARTA

MARGARET DICKSON

Marshall P. Wilder—Bright cherry carmine; very fragrant and one of the freest bloomers.

Baron de Bonstetten—Flowers large and very double; color rich, dark red, passing to deep velvety maroon. Very fragrant.

Clio—New. The perfection in Hybrid Perpetuals. Of delicate satin blush with a little deeper center. Large, well shaped and very double. Strong, robust, hardy and prolific. A jewel.

Blanche Robert—Pure white, large and full, buds very beautiful. A strong grower and a desirable variety.

Alfred Colomb—Very large and full. Brilliant carmine crimson; extremely fragrant. A free grower.

American Beauty—Very large and double. Of globular shape. Deep pink, shaded with carmine. Fragrance exquisite.

Anne de Diesbach—Very large, brilliant crimson; fragrant, vigorous.

Mad. Plantier—Pure white, large and very double. A free bloomer and grower.

La France—Rich satiny peach, changing to deep rose; large and full. A constant bloomer. The sweetest of all.

Magna Charta—Pink and carmine; very large and full; a profuse bloomer. Fragrant. Free grower.

Frau Karl Druschki (Snow Queen)—A new rose of great merit. There is nothing in white roses quite as fine as this. Pure white, large and of elegant form. The bush is vigorous and healthy, with bright, robust and abundant foliage. Perfectly hardy and very prolific.

General Jacqueminot—Brilliant crimson; large and fine. Beautiful in bud and a universal favorite.

Margaret Dickson—New, perfectly hardy and very vigorous. A free summer and autumn bloomer. Flowers white with pale flesh center, of a waxy texture and delightful fragrance.



PAUL NEYRON

Paul Neyron—The largest of all. Deep rose color. A free bloomer and vigorous grower.

Coquette des Alps—White, slightly shaded with carmine; strong grower and a great favorite.

Mrs. J. Laing—Very free flowering; commences early and continues to bloom profusely until fall. Of delicate pink color. very fragrant.

Pomona wholesale price for all varieties of Roses on this page, strong 2 year bushes, 60 cents each, 10 for \$5.75.

Select Varieties of Roses



PRINCE CAMILE DE ROHAN

- Prince Camile de Rohan**—Very dark velvety crimson, changing to intense maroon.
- Persian Yellow**—Deep, bright yellow; small but handsome; double; a very early bloomer, and much the finest hardy yellow rose.

Success Rose Collection 10 Hardy Bushes for \$5.25

All strong 2 year old Hardy Rose Bushes of the best American varieties:

- | | |
|----------------------|-------------------|
| 1 Crimson Rambler | 1 Clio |
| 1 Frau Karl Druschki | 1 La France |
| 1 Margaret Dickson | 1 M. P. Wilder |
| 1 Paul Neyron | 1 Mrs. J. Laing |
| 1 P. C. de Rohan | 1 Dorothy Perkins |

The above are the very best hardy varieties for the home garden, guaranteed to bloom the first year planted.

Regular Agents' Price \$15.00; our Special Bargain Price for the 10 Bushes, \$5.25.

- Harrison's Yellow, free**—Double; bright yellow; very showy and fine.
- John Hopper**—Bright rose with carmine center; large and full. A profuse bloomer and standard sort.
- John Keynes**—Of brilliant red, shaded with velvety crimson; magnificent buds; a variety that is very satisfactory to all lovers of roses; good grower; quite hardy.
- Live Forever Rose**—I recommend this rose to all, especially to those who have not been able to succeed with roses. Plant it in large beds and you will have a display of Pink bloom that will attract attention.
- Philadelphia Rambler**—This variety is a cross between Crimson Rambler and Hybrid Perpetual Victor Hugo and is identical in all respects to the Crimson Rambler except in color, which is deeper, brighter and more intense crimson, which never fades out, and while it is not expected to supercede the old favorite, it is a most valuable addition to our list of hardy climbing Roses.
- Dorothy Perkins**—The flowers are borne in clusters of thirty or forty, and sometimes even fifty and sixty. The blooms are large for a Rose of this class, very double, sweet-scented and of a beautiful shell-pink; it is also entirely hardy. A valuable Rose.

- Yellow Rambler**—A strong grower, with large trusses of nearly double pale yellow flowers; fragrant.
- White Rambler**—Also perfectly hardy and a strong, vigorous grower; flowers white.
- Baltimore Belle**—Pale blush, nearly white. Blooms in clusters.
- Salet Moss**—A vigorous grower and perpetual bloomer, color light rose, the best of its class.
- Crimson Rambler**—Climbing Rose. An exceedingly vigorous and rapid grower, making shoots 8 to 10 feet in one season, and when in bloom commands admiration by the gorgeous display of its brilliant crimson flowers.
- Baby Rambler**—A dwarf (bush) form of Crimson Rambler, and furthermore, ever-blooming. Will bloom continuously throughout the summer if planted out-of-doors.

Pomona wholesale price for all varieties of hardy Roses, strong 2 year bushes, 60c each, 10 for \$5.75.

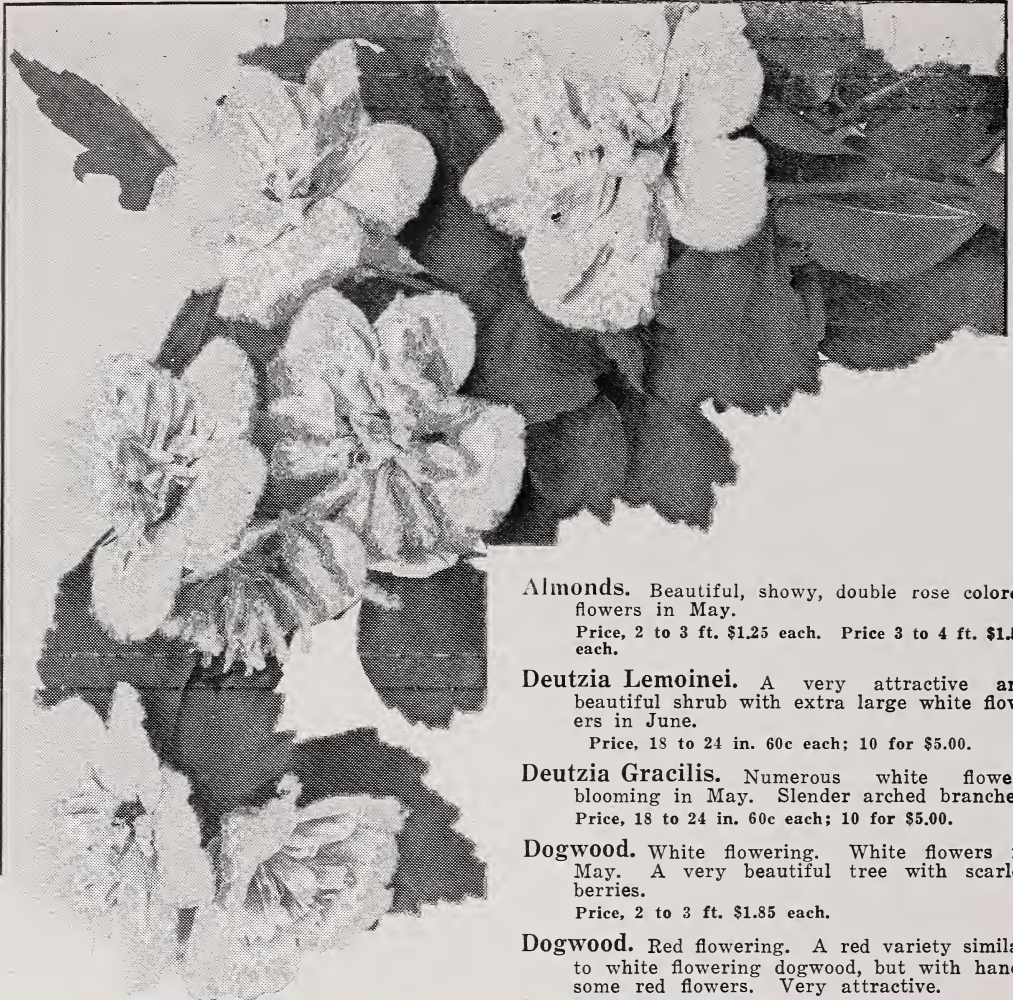
Hybrid Teas and Everblooming Roses

A select list of the very best varieties

- | | | |
|-----------------------------------|--|---|
| General Mac Arthur, scarlet, red. | Lady Hillingdon, apricot yellow. | Premier, rich deep rose color. |
| Gruss an Teplitz, scarlet. | Lieutenant Chaure, crimson red. | Radiance, carmine pink, yellow at base of petals. |
| J. L. Mock, deep pink. | Mme. Edouard Herriott, coral red, shades yellow and scarlet. | Sunburst, rich yellow, shaded coppery orange. |
| Kaiserin Augusta Victoria, white. | | Killarney, white. |
| Killarney, pink. | | |

Price of Everblooming Roses Strong 2 Year Bushes 75 cents each 10 for \$7.00

Select Varieties of Upright Flowering Shrubs



DOUBLE FLOWERING ALTHEA

Althea, Double Flowering. One of the most showy flowering shrubs, double flowers of striking color, in red, purple and white. (Name color wanted when ordering).
Price, 2 to 3 ft. 45c each; 10 for \$4.00.

Althea, Tree Form. In red, white and purple.
Price, 3 to 4 ft. 95c each.

Butterfly Bush. Very ornamental. Lilac like flowers in July to Sept.
Price, 2 to 3 ft. 45c each; 10 for \$4.00.

Calycanthus. Flowers purple. Very Double. A sweet scented shrub.
Price, 2 to 3 ft. 55c each; 10 for \$4.50.

Deutzia Crenata. Double white, tinged with wild rose.
Price, 2 to 3 ft. 50c each; 10 for \$4.50.

Deutzia, Pride of Rochester. Very large double white flowers in May. A very distinct and valuable variety.
Price, 2 to 3 ft. 45c each; 10 for \$4.00.

Almonds. Beautiful, showy, double rose colored flowers in May.
Price, 2 to 3 ft. \$1.25 each. Price 3 to 4 ft. \$1.50 each.

Deutzia Lemoinei. A very attractive and beautiful shrub with extra large white flowers in June.
Price, 18 to 24 in. 60c each; 10 for \$5.00.

Deutzia Gracilis. Numerous white flowers blooming in May. Slender arched branches.
Price, 18 to 24 in. 60c each; 10 for \$5.00.

Dogwood. White flowering. White flowers in May. A very beautiful tree with scarlet berries.
Price, 2 to 3 ft. \$1.85 each.

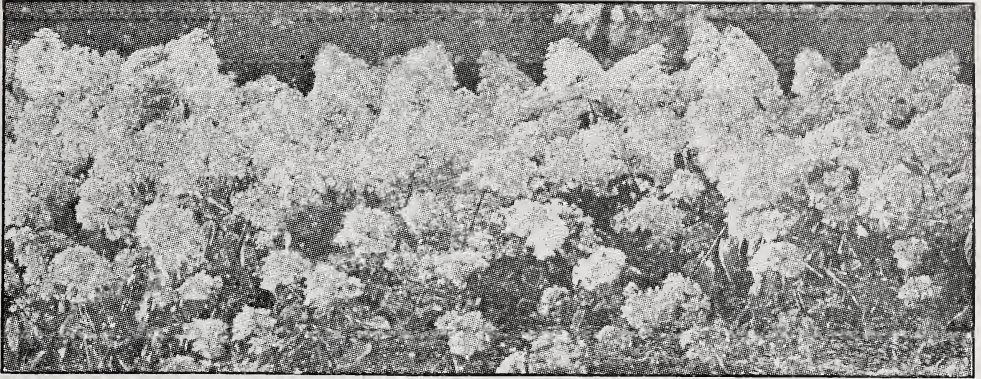
Dogwood. Red flowering. A red variety similar to white flowering dogwood, but with handsome red flowers. Very attractive.
Price, 2 to 3 ft. \$2.00 each.

Eleganus Longipes. A showy shrub with silver variegation in the lining of its leaves. Creamy white blooms in May. With scarlet fruit hanging thickly along its branches which are ripe in July.
Price, 2 to 3 ft. 60c each; 10 for \$5.00.



DEUTZIA, PRIDE OF ROCHESTER

Propagated Where the Best Trees Grow



A HEDGE OF HARDY BUSH HYDRANGEA

Hydrangea, P. G. Never fails to bloom. Very hardy enduring the severest winters outdoors without protection. Will grow anywhere and in any soil.

Price, 2 to 3 ft. 70c each; 10 for \$6.00.
18 to 24 in. 50c each; 10 for \$4.50.

Hydrangea, P. G., Tree Form.

Price 2 to 3 ft. \$1.00 each. 3 to 4 ft. \$1.50 each.

Hydrangea, Hills of Snow. Plant covered with abundance of large white flowers in June and July.

Price, 2 to 3 ft. 65c each.

Japan Quince. Very attractive, with showy scarlet berries.

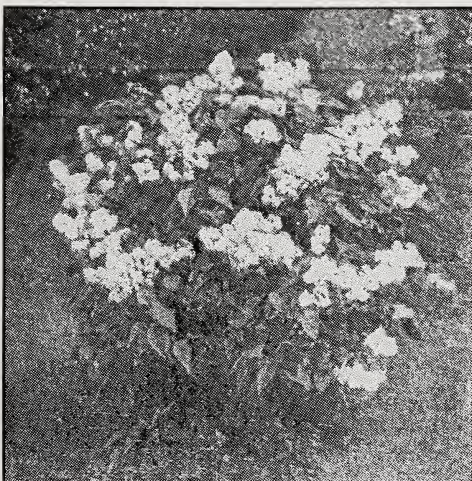
Price, 18 to 24 in. 50c each; 10 for \$4.50.
2 to 3 ft. 60c each; 10 for \$5.00.

Lilac, Common Purple. Deliciously fragrant, purple flowers blooming in May. Attractive bright green foliage.

Price, 2 to 3 ft. 70c each. 3 to 4 ft. \$1.00 each.

Lilac, Common White. Very similar to the above variety excepting the flowers, which are pure white.

Price, 2 to 3 ft. 70c each. 3 to 4 ft. \$1.00 each.



PURPLE LILAC

Forsythia (Golden Bell). With golden yellow flowers in April. Upright in growth. A very handsome shrub when in bloom.

Price, 2 to 3 ft. 45c each; 10 for \$4.00.



HYDRANGEA, HILLS OF SNOW

Golden Elder. Bright yellow foliage, which affords pretty contrast with other shrubs.

Price, 2 to 3 ft. 50c each; 10 for \$4.50.

Snowball, Common. Flowers white, in clusters, very attractive when in bloom, May to June.

Price, 18 to 24 in. 60c each. 2 to 3 ft. 75c each. 3 to 4 ft. 85c each.

Snowball, Common Tree Form.

Price, 3 to 4 ft. \$1.25 each.

Snowball, Japan. White flowers in June. A fine shrub with very beautiful foliage.

Price, 2 to 3 ft. \$1.00 each. 3 to 4 ft. \$1.25 each.

Fringe White. Fringe-like, fragrant white flowers in May; has purple colored ornamental fruit.

Price, 2 to 3 ft., \$1.75 each.

High Bush Cranberry. White flowers in May to June, with bright scarlet fruit in fall.
Price, 18 to 24 in. 60c each. 2 to 3 ft. 70c each.

Snow Berry. An old time shrub produces clusters of pure white berries which remain nearly all winter.
Price, 18 to 24 in. 40c each. 2 to 3 ft. 50c each.

Spirea Anthony Waterer. One of the best low flowering shrubs having large crimson flowers in late summer.
Price, 12 to 18 in. 45c each; 10 for \$4.00. 18 to 24 in. 50c each; 10 for \$4.50.

Spirea Arguta. Flowers in clusters along drooping slender branches in May. Very ornamental.
Price, 2 to 3 ft. 45c each; 10 for \$4.00.

Spirea Billardi. Dense panicles. Large pink flowers. Blooming in July and Aug. Narrow dense shrub.
Price, 18 to 24 in. 40c each; 10 for \$3.50. 2 to 3 ft. 45c each; 10 for \$4.00.

Spirea Bumaldi. Light pink flowers in July and August. Showy flat clusters. Good dense foliage.
Price, 18 to 24 in. 50c each; 10 for \$4.50.

Spirea Callosa Alba. White flowers, June to Sept. Dull green leaves. Upright growth.
Price, 18 to 24 in. 50c each; 10 for \$4.50.

Spirea Prunifolio (Bridal Wreath). Very double, showy, pure white flowers.
Price, 18 to 24 in. 40c each; 10 for \$4.00. 2 to 3 ft. 45c each; 10 for \$4.50.

Spirea Themborgii. White flowers in April. Retains delicate foliage until late.
Price, 18 to 24 in. 45c each; 10 for \$4.50.

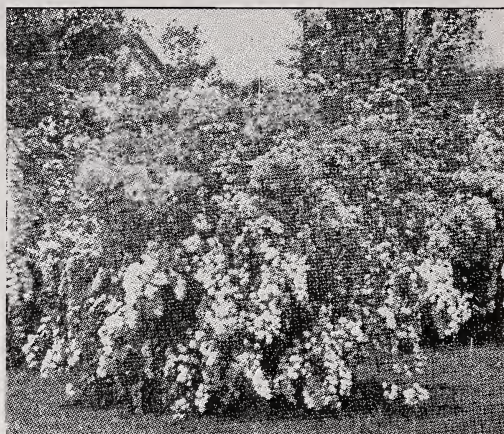
Syringa, (Mock Orange). A well known, very hardy shrub, with snowy white flowers which are very fragrant.
Price, 2 to 3 ft. 45c each; 10 for \$4.00.



WEIGELA ROSEA

When buying Ornamental Shrubs be sure to note the ones we offer are Two Year, strong No. 1, and are far superior to small size stock, offered by others at a few cents less.

Note: We make special low prices on Spirea Van Houttei.



HARDY SPIREA VAN HOUTTEI

Spirea Van Houttei. Grandest of all Spireas. Resembles a fountain. White blossoms, April to May.
Price, 18 to 24 in. 35c each; 10 for \$3.00. 2 to 3 ft. 45c each; 10 for \$4.00. 3 to 4 ft. 60c each; 10 for \$5.00.

Syringa, (Golden Leaf). A new variety with bright yellow foliage, which affords pretty contrast with other shrubs.
Price, 18 to 24 in. 75c each; 10 for \$6.50.

Weigelia, (Candida). Profusion of pure white flowers blooming in June. Very bushy in its growth.
Price, 2 to 3 ft. 60c each; 10 for \$5.50.

Weigelia, (Eva Rathke). Handsome fragrant crimson flowers in July. Most distinct variety.
Price, 2 to 3 ft. 60c each; 10 for \$5.50.

Weigelia, (Flora Bunda, Crimson Weigelia). Flowers of dark crimson which bloom profusely in the fall. One of the best.
Price, 2 to 3 ft. 50c each; 10 for \$4.50.

Weigelia, (Rosea). An abundance of pink flowers in June. Good foliage. An old garden favorite.
Price, 2 to 3 ft. 50c each; 10 for \$4.50.

Weigelia, (Varigated). Rose flowers in June. Leaves are margined with white. Shrub is dense in growth.
Price, 2 to 3 ft. 75c each; 10 for \$7.00.

Wisteria, (Common Purple). Lilac flowers in June. Flowers are 5 in. long when fully matured.
Price, strong 2 yr. vines, 65c each.

Wisteria, (Common White). White flowers in June. Flowers 4 to 5 in. long when fully matured.
Price, strong 2 yr. vines, 75c each.

Wisteria, (Chinese Purple). Purple flowers in May. Sometimes a foot long. Very beautiful and showy.
Price, strong 2 yr. vines, \$1.00 each.

Wisteria, (Chinese White). Same as the above variety, except the flowers are white and somewhat larger.
Price, strong 2 yr. vines, \$1.00 each.

Propagated Where the Best Trees Grow

EVERGREENS

Boxwood—This old-fashioned variety is a native of England where it has been grown for centuries. Its neat, dense, waxy foliage has secured many admirers. They are well adapted to small places and can be used with splendid effect as shrubs for the lawn. For decorative purposes both summer and winter. **Price, 18 to 24 inches, \$3.50 each.**

Austrian Pine—A rapid growing species from the mountains of the Austrian Empire. It has very stout branches, with long, rigid bluish green foliage, and presents a massive appearance in contrast with other conifers. It is very hardy, not especially particular in regard to soils, and valuable for windbreaks, etc. **Price, 2 to 3 ft., \$3.50 each, 18 to 24 in. \$3.00 each.**

Scotch Pine—A rapid-growing, very hardy evergreen, especially adapted for windbreaks and grouping. It is a native of central and northern Europe, forming large trees with pleasing glaucous green foliage. Although quite ornamental when young, this species is more picturesque than beautiful with age. **Price, 2 to 3 ft., \$3.50 each, 18 to 24 in., \$2.75 each.**

Irish Juniper—Junipers are handsome evergreens. Always neat and clean. This variety grows exceptionally slim and column-like. The branches grow almost straight up, and a 7 or 8 foot tree will not be more than a foot and a half thick. **Price, 2 to 3 ft., \$2.75 each; 18 to 24 in., \$2.00 each.**

American Arbor Vitae—Much used for hedges, screens, singly on lawns, and in tubs for porches, etc. It is a handsome little tree, and if allowed to grow naturally will be quite tall and pyramid-shaped. Can be trimmed and kept in any form and height. In the summer the foliage is bright green above, yellowish beneath, and when winter comes this changes to the richest tones of brown and bronze. **Price, 12 to 18 in., 75c each, 10 for \$7.00; 18 to 24 in., \$1.10 each, 10 for \$9.00.**



AMERICAN ARBOR VITAE



NORWAY SPRUCE

Norway Spruce—A lofty, elegant tree of perfect pyramidal habit, remarkably elegant and rich. As it gets age, has fine, graceful pendulous branches. It is exceedingly picturesque and beautiful. Very popular and should be largely planted. One of the best evergreens for hedges. **Price, 18 to 24 in., \$1.10 each, 10 for \$10.00; 2 to 3 ft., \$1.50 each, 10 for \$12.50.**

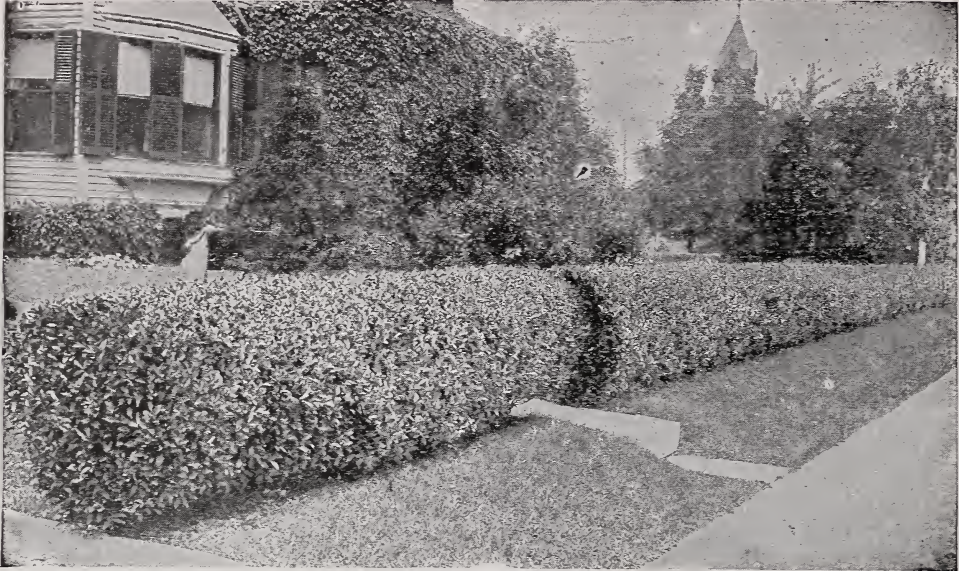
Pyramidal Arbor Vitae—One of the most beautiful varieties, very erect and regular in form, resembling the Irish Juniper; foliage a deep green color, well retained in winter; perfectly hardy. Unlike the Juniper it is easily transplanted and sure to give satisfaction. **Price, 18 to 24 in., \$2.50 each; 2 to 3 ft., \$5.00 each.**

Mugho—Dwarf Mountain pine. Low, dense and spreading in growth, usually broader than its height. One of the most attractive and valuable of our dwarf Evergreens. **Price, 12 to 18 inches, \$4.50 each. 18 to 24 inches, \$5.50 each.**

Colorado Blue Spruce—This Blue Spruce is hardy, healthy and very beautiful. Its foliage is a steel blue. **Price 12 to 18 in. \$5.00 each.**

The Only Way—Try Us Once and You Will Come Again.

Hedge Plants and Vines



CALIFORNIA PRIVET HEDGE

California Privet. A vigorous-growing variety, of fine habit, thick, glossy, nearly evergreen leaves. Of all ornamental hedge plants this is the most highly prized. If cut to the ground one or two years after planting, it makes a very thick hedge right from the bottom, sending up many strong shoots. It is almost an evergreen, and grows freely in all soils; compact and regular in its form, and bears shearing to any extent. The leaves are a rich green, and will remain on the plants up to Christmas, and if they are a little sheltered they will keep almost all winter.

Pomona Wholesale Price of California Privet, 2 year, well branched

9 to 12 in.	10c each	10 for .95	100 for \$4.50	1000 for \$25.00
12 to 18 in.	15c each	10 for \$1.25	100 for 6.50	1000 for 50.00
18 to 24 in.	20c each	10 for \$1.50	100 for 8.00	1000 for 70.00
2 to 3 ft.	25c each	10 for \$1.75	100 for 10.00	1000 for 90.00

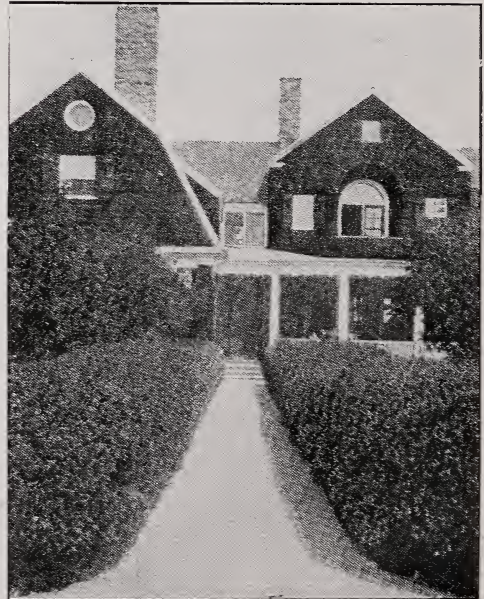
Ampelopsis Veitchii (Boston Ivy)—Leaves overlap one another, forming a dense sheet of green. It grows rapidly and clings to wall or fence with the tenacity of Ivy; the foliage is very handsome in summer, and changes to crimson scarlet in autumn. For covering walls, garages, rockeries, etc., no plant is so useful. For the ornamentation of brick and stone structures, it can be specially recommended. Price 50 cents each, 10 for \$4.50.

Barberry Thunbergii—From Japan. A beautiful shrub of dwarf habit, not growing more than three feet high; covered with yellow flowers, followed by scarlet fruits on long stems that last nearly all winter. The foliage is dense, green, changing to a coppery red in autumn. It makes a very beautiful and showy hedge.

Price of Barberry Thunbergii

Strong 2 Year Bushes Well Branched

9 to 12 inches,	20c each,	10 for \$2.00,	100 for \$17.50.
12 to 18 inches,	30c each,	10 for \$2.75,	100 for \$25.00.
18 to 24 inches,	35c each,	10 for \$3.25,	100 for \$30.00.



AN ATTRACTIVE HEDGE OF BARBERRY THUNBERGII

Propagated Where the Best Trees Grow



HARDY PHLOX

Plants and Bulbs

	Each	10
Asters	\$.35	\$3.00
Anchusa	.35	3.00
Anemone	.35	3.00
Bleeding Heart (Dielytra)	1.00	
Cannas	.35	3.00
Canterbury Bell	.30	2.50
Carnation	.25	2.25
Chrysanthemum	.25	2.25
Columbine	.25	2.25
Crocus	.05	.45
Daffodils	.15	1.25
Dahlias Assorted	.35	3.00
Daisy Shasta	.25	2.25
Digitalis	.25	2.25
Eulalia	.30	2.50
Gladioli Assorted	.10	1.00
Golden Glow	.30	2.50
Gaillardia	.25	2.00
Hollyhocks	.25	2.00
Hyacinths	.15	1.25
Iris German	.25	2.25



PINKS

	Each	10
Iris Japan	.30	2.50
Larkspur	.25	2.00
Lilies Assorted	.35	3.00
Lilies Batemannii	.30	2.50
Lilies Calla	.35	3.00
Lilies Easter	.35	3.00
Lilies of the Valley	.15	1.50
Lilies Longiflorum	.35	3.00
Lilies Tenulium	.35	3.00
Lilies Tigrum	.35	3.00
Narcissus	.15	1.25
Primrose	.30	2.50
Phlox Assorted Colors	.25	2.00
Poppy Oriental	.30	2.50
Pinks	.30	2.50
Tuberose	.35	3.00
Tulips	.10	1.00
Violets	.15	1.25
Yucca	.35	3.00
Peonies, Red, White and Pink	.45	4.00



CLEMATIS
JACKMANNI

Clematis, Paniculata—Single, white. Of extremely rapid growth, with shining green foliage, and a profusion of flowers which are small, but borne in large panicles; very popular. 50c each; \$4.50 per ten.

Clematis, Jackmanni—Large, intense violet purple and remarkable for its velvety richness; free in growth; abundant and successive bloomer. 95c each.

Clematis, Henryii—Single; the finest white Clematis; very large, fine flowers; grows rapidly, blooms freely during summer and autumn. 95c each.

Clematis, Mme. Ed. Andre—Flowers medium size; dark red; flowering. 95c each.

Ivy, American or Virginia Creeper—A fine rich green in summer, changing to crimson in autumn. Affords shade quickly and is very desirable for covering walls, verandas or trunks of trees. 50c each.

Honeysuckle, Hall's Japan—A strong, vigorous, almost evergreen sort, with pure white flowers, changing to yellow. Very fragrant. Covered with flowers from July to December; holds its leaves until January. Price 50c each; 10 for \$4.50.

Pomona United Nurseries, Dansville, N.Y.

Buying Choice Trees and Plants by Parcel Post

It is easier to buy by mail than to go to a store. In many instances it is possible to buy a better quality of trees and plants by mail than can be procured in other ways.

The greater portion of our business is transacted through the mails. The planter in California can purchase with as great an assurance of satisfaction as if he personally selected his trees and plants.

Trees and Plants ordered are personally selected. One from our office, who has spent an entire lifetime in the business, carefully selects the trees and plants and follows instructions closely.

Our method of packing enables us to ship to remote sections with great success. We believe that we give more attention to digging and packing than is customary.

Our Mail Order Trees and Plants are flourishing in localities where the smoke of the railroad engine is never seen, and at other distant points where railroad charges would deter you from ordering.

Varieties of Trees and Plants—By Parcel Post Postpaid

Apple Trees by Parcel Post

For this season's mailing we have an extra fine block of one year old trees. Such trees that every buyer will be pleased with. The varieties are: Northern Spy, Yellow Transparent, Wealthy, Baldwin, York Imperial, Duchess, Wagener, King, Jonathan, McIntosh, Banana and Delicious.

Parcel Post Price of Apple Trees 3 ft. high, 45c each, 10 for \$4.25.

Standard Pear Trees

We have by a special method grown some mailing size trees of a few varieties as follows: Bartlett, Kieffer, Clapp's Favorite, Seckel and Flemish Beauty.

Parcel Post Price of Pear Trees 3 ft. high 60c each, 10 for \$5.50.

Cherry Trees



For this season we can dig some extra fine mailing size trees, very strong, well rooted trees, of varieties as follows: Early Richmond, Montmorency, English Morello, Dyehouse, Windsor, Napoleon and Black Tartarian.

Parcel Post Price of Cherry Trees 2 to 3 ft. high 70c each, 10 for \$6.50.

Dwarf Pear Trees

We can supply the following varieties: Duchess, Seckel, Clapp's Favorite, and Bartlett.

Parcel Post Price of Dwarf Pear Trees, 2 to 3 feet high 65c each, 10 for \$5.50.

Plum Trees

Plum trees generally grow so heavy at one year old that it is impossible to get mailing-size trees, but we have some nice trees, strong, heavy rooted, three feet high, of varieties as follows: Abundance, Burbank, Climax, Red June, Wickson.

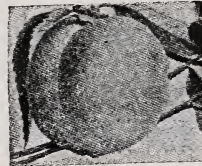
Parcel Post Price of Plum Trees 3 ft. high 50c each, 10 for \$4.50.

ORNAMENTAL SHRUBS, ROSES AND VINES—Strong, well rooted bushes of all varieties offered can be sent by Parcel Post if 3 CENTS EXTRA IS ADDED TO EACH PRICE QUOTED IN THIS CATALOGUE.



Peach Trees

We offer varieties of mailing size peach trees as follows: Niagara, Elberta, Early and Late Crawford, Champion, Carman, Fitzgerald, Reeve's Fav., Chair's Choice, Greensboro, Kalamazoo and Crosby.



Parcel Post Price of Peach Trees 2 to 3 ft. high 45c each, 10 for \$4.00

Quince Trees

We offer three varieties of mailing size quince trees: Orange, Bourgeat and Champion. Very strong, heavily rooted, 2 to 3 feet.

Parcel Post Price 65c each, 10 for \$6.00.

Dwarf Apple Trees

Our list of varieties is: Delicious, McIntosh, Baldwin, Grimes' Golden, Wealthy and Yellow Transparent.

Parcel Post Price for Dwarf Apple Trees 2 to 3 feet high 70c each, 10 for \$6.50.

Grape Vines

Worden. A splendid black grape.

Moore's Early (Black.) Bunch and berry large, round with heavy blue bloom.

Concord. Bunch large, compact, berries large.

Brighton. The best red grape in cultivation.

Diamond. Leading early white grape.

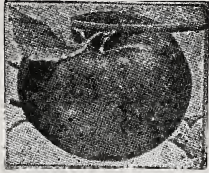
Niagara. Occupies the same position among white varieties as Concord among black.

Parcel Post Price of Grape Vines 2 yr., 25c each, 10 for \$2.45.

POMONA COLLECTIONS OF Trees and Plants for the Home Garden

By Mail and Express

Apple Collection No. 11



5 Selected Winter Varieties
For \$1.95

- 1 R. I. Greening
- 1 Northern Spy
- 1 Baldwin
- 1 Wagener
- 1 Delicious

5 Trees, 2 Yr. 4 to 5 Ft. (by express) \$1.95
2 Yr. Trees, 3 Ft. high (by mail) \$2.15

Apple Collection No. 2

5 Selected Fall Varieties
For \$1.95

- 1 Fameuse
- 1 Duchess
- 1 Wealthy
- 1 Yellow Trans.
- 1 Red Astrachan



5 Trees, 2 Yr. 4 to 5 Ft. (by express) \$1.95
2 Yr. Trees, 3 Ft. high (by mail) \$2.15

Apple Collection N. 3

5 Selected Fall and Winter Varieties
For \$1.95



- 1 Baldwin
- 1 Northern Spy
- 1 R. I. Greening
- 1 Wealthy
- 1 Red Astrachan

5 Trees, 2 Yr. 4 to 5 Ft. (by express) \$1.95
2 Yr. Trees, 3 Ft. high (by mail) \$2.15

Pear Collection No. 4

5 Selected Trees for \$3.00

- 1 Bartlett
- 1 Seckel
- 1 Clapps Favorite
- 1 Anjou
- 1 Kieffer



5 Trees, 2 Yr. 4 to 5 Ft. (by express) \$3.00
2 Yr. Trees, 3 Ft. high (by mail) \$3.15

Cherry Collection No. 5

5 Selected Trees for \$3.85

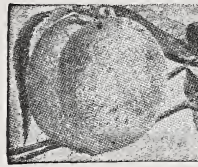


- 1 Montmorency
- 1 Early Richmond
- 1 English Morello
- 1 Black Tartarian
- 1 Napoleon

5 Trees, 2 Yr. 4 to 5 Ft. (by express) \$3.85
2 Yr. Trees, 2 to 3 Ft. (by mail) \$4.00

Peach Collection No. 6

5 Selected Trees
For \$2.25



- 1 Elberta
- 1 Carman
- 1 Champion
- 1 Niagara
- 1 Early Crawford

5 Trees, 1 Yr. 4 to 5 Ft. (by express) \$2.25
1 Yr. Trees, 3 Ft. high (by mail) \$2.15

Plum Collection No. 7

5 Selected Trees for \$3.95

- 1 Abundance
- 1 Lombard
- 1 Red June
- 1 Burbank
- 1 Niagara



5 Trees, 2 Yr. 4-5 Ft. high (express) \$3.95
2 Yr. Trees, 2-3 Ft. high (by mail) \$2.85

Dwarf Pear Tree Collection No. 12



5 Dwarf Pear Trees for \$3.75

Every garden has room for
a few Dwarf Pear Trees.

- 1 Seckel
- 2 Duchess
- 1 Bartlett
- 1 Clapp's Favorite

2 Yr. Trees 3 to 4 Ft. (by express) \$3.75
2 Yr. Trees, 2 to 3 Ft. (by mail) \$3.00

Special Grape Collection No. 9

- 10 Strong 2 year Vines for \$1.95
- 2 Worden
- 2 Concord
- 2 Niagara
- 2 Brighton



2 Chas. A. Green
10 Strong 2 Yr. Vines
By Express for \$1.95
By Mail \$2.15

Garden Collection No. 10

6 Selected Trees
For \$3.00



- 1 Abundance Plum
- 1 Delicious Apple
- 1 Bartlett Pear
- 1 Elberta Peach
- 1 Montmorency Cherry
- 1 Harris Apricot

6 Trees, 2 Yr. 4 to 5 Ft. (by express) \$3.00
2 Yr. Trees, 2 to 3 Ft. (by mail) \$3.15

When Ordering these Special Collections Please Order by Number and state if desired shipped by Mail or Express

We Prepay Freight and Express on all Orders of \$7.00 and up as Listed.
We pay postage on all Trees and Plants offered by mail.

Pomona United Nurseries

Fresh Dug Trees Guaranteed True to Name
DANSVILLE, N.Y.



TRANSPORTATION CHARGES PAID

1 TREE EACH OF THE ABOVE 5 VARIETIES 4 to 5 ft. FOR \$3.00