

Historic, Archive Document

Do not assume content reflects current scientific knowledge, policies, or practices.

62,93

BOFFERDING'S

DEPENDABLE
SEEDS — PLANTS — BULBS



For the MARKET and
HOME GARDENER

1932

BOFFERDING SEED CO.
Seedsman

121 7th Street North

Minneapolis, Minn.

• GREETINGS 1932 •

We are pleased to know that our unending efforts for Seed Service are appreciated. How do we know? By the increase in business and expressions of appreciation by many of our friends and customers. It is truly said, "THAT HE WHO SERVES BEST PROFITETH MOST." It is also true that, HE WHO IS SERVED BEST PROFITETH MOST. Our business is established to be a Real Service to the Market Gardener, Florist and Seed User in general who wish to have a source of supply for the best varieties of dependable seed. Prompt and efficient personal service is assured. Many years of experience, excellent shipping facilities, large stocks, make it possible for us to care for your orders intelligently and efficiently.

Seed Insurance—To produce a crop of high-grade salable vegetable, or any crop, it is necessary to sow seed of good strain, strong germination, and freedom from disease.

Personal selection from the products of expert seed growers who are constantly developing better strains enables us to offer stocks of outstanding merit. Any selection from the Bofferding Seed Co. list will give you the best of its kind. We aim to offer the best; that is why we are eliminating a number of varieties from our catalog this season.

Germination—Every lot of seed in our stock is tested for germination.

Note:—Order a supply of Semesan and treat the seed, simple and effective.

Carry Over Seed Supply—Do not be afraid to buy two years' supply. If you buy enough for two years' planting you will have seed on hand that you have proved yourself. Especially, Cabbage, Cauliflower, Radish, Beets, Lettuce and Cucumber—in fact most any seed of strong germination will be as good, and in some cases better of germination the second year. We urge and advise this practice.

One word more—be friendly, use our store and make it headquarters when in town.

TULIPS

Dutch and Domestic Bulbs
for fall planting.

We import the finest.

Ask for price list about Sept. 1st.

DAHLIAS

and

Bulbs for spring planting.

Write for price list.

Bofferding Seed Co. gives no warranty, express or implied, as to description, purity, productiveness or any other matter of any seeds, plants or bulbs we send out, and we will not be in any way responsible for the crop.

BOFFERDING SEED COMPANY

Wm. H. Bofferding, President and Manager

121 Seventh Street North

MINNEAPOLIS, MINNESOTA

GENERAL LIST

BOFFERDING'S VEGETABLE SEEDS

Our list comprises only the tried and best varieties and our stocks are secured from the most reliable sources; every lot of seed tested for germination.

Super Select is used to designate varieties which are best in their class, and in most cases proven stock. Order **Super Select** strains for the biggest returns.

Packets, ounces, and quarter pounds, post paid at prices listed.

ASPARAGUS

1 oz. 500 Plants

Palmetto—An early maturing and prolific variety with thick, dark green shoots, distinctly pointed at the tip. A popular canning variety. Pkt. 5c; oz. 10c; $\frac{1}{4}$ lb. 25c; lb. 85c.

Mary Washington—An improved strain of the Washington type asparagus, heavy yielding variety, with long, thick, heavy stalks; rich green color. Should be planted exclusively. Pkt. 10c; oz. 15c; $\frac{1}{4}$ lb. 35c; lb. \$1.25.



Unrivalled Wax

BEANS

No seedman lists all varieties of beans. The best variety of a type is what we list and sell. Fewer and better kinds make our friends and customers. Select from the best which we have listed for you.

DWARF WAX POD

2 lbs. 100 feet drill—60 lbs. per acre.

Unrivalled Wax—Early and immensely productive. Pods 5 to 5 $\frac{1}{2}$ inches long, matures in 50 days. One of the best for market. Lb. 30c; 5 lbs. \$1.35; 15 lbs. \$3.50.

Black Wax, Pencil Pod—Early and very productive. Pods round, 6 to 7 inches long, stringless. 57 days. Lb. 30c; 5 lbs. \$1.25; 15 lbs. \$3.50.

Round Pod Kidney Wax—Early round podded and stringless, highest quality. Pods 6 to 7 inches. 56 days. Lb. 35c; 5 lbs. \$1.50; 15 lbs. \$4.00.

Stringless Kidney Wax—Lb. 35c; 5 lbs. \$1.50; 15 lbs. \$4.00.

Webber Wax (Cracker Jack Wax)—Lb. 30c; 5 lbs. \$1.35; 15 lbs. \$3.50.

DWARF GREEN PODDED VARIETIES

Black Valentine, Stringless—50 days. Lb. 35c; 5 lbs. \$1.50; 15 lbs. \$3.75.

Tendergreen, Improved Full Measure—Lb. 35c; 5 lbs. \$1.50; 15 lbs. \$3.75.

Bountiful—50 days. Best flat podded stringless. Lb. 30c; 5 lbs. \$1.35; 15 lbs. \$3.50.

Full Measure—53 days. Lb. 30c; 5 lbs. \$1.35; 15 lbs. \$3.50.

Giant Stringless Green Pod—56 days. Lb. 35c; 5 lbs. \$1.50; 15 lbs. \$3.75.

Longfellow—60 days. Lb. 30c; 5 lbs. \$1.35; 15 lbs. \$3.75.

DWARF LIMA

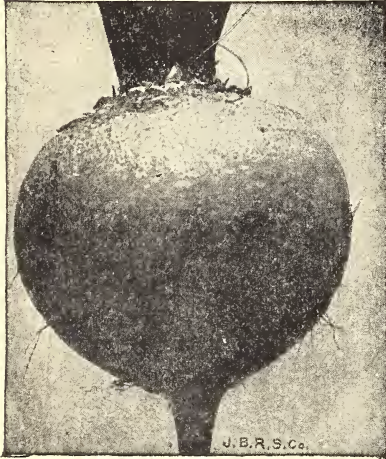
Burpee's Bush Lima—77 days. Lb. 35c; 5 lbs. \$1.50; 15 lbs. \$4.00. Fordhook Bush Lima—76 days. Lb. 35c; 5 lbs. \$1.50; 15 lbs. \$4.00.

POLE BEANS

Giant Podded Lima—Lb. 40c; 5 lbs. \$1.75; 15 lbs. \$4.50. Kentucky Wonder, Wax—68 days. Lb. 30c; 5 lbs. \$1.35; 15 lbs. \$3.75.

BEETS

1 oz. 50 feet drill—6 to 7 lbs. per acre



Detroit Dark Red

Detroit Dark Red, Improved (Morse's)—Uniform gray green tops, roots smooth and true globe shape. But its greatest claim to superiority is the deep uniform fresh-blood color of the flesh of the root. Rings quite inconspicuous, fine grained, crisp and sweet. Oz 15c; $\frac{1}{4}$ lb. 35c; lb. \$1.25.

Detroit Dark Red (Rices)—An excellent strain, dark red and no white zones. Oz. 10c; $\frac{1}{4}$ lb. 30c; lb. 90c; 5 lbs. \$4.00.

Boston Crosby—A globe shaped selection from Crosby's Egyptian, dark red, flesh deep purplish red, with little tendency to zoning. One of the most popular and handsome of the early beets. Oz. 10c; $\frac{1}{4}$ lb. 30c; lb. \$1.00; 5 lbs. \$4.50.

Early Wonder—Splendid early variety for home or market garden. Oz. 10c; $\frac{1}{4}$ lb. 30c; lb. \$1.00; 5 lbs. \$4.50.

MANGEL BEETS FOR STOCK

Giant Sludstrup—Long reddish yellow. Improved Mammoth Long Red—

Giant Half Sugar, Green Top—All mangels, $\frac{1}{4}$ lb. 20c; lb. 50c; 5 lbs. \$2.25.

BROCCOLI

New York Green Sprouting—A distinct variety extensively grown by Italian gardeners. It should be started in plant beds and transplanted to the field so that it will mature during the late spring or early fall. It requires a definitely cool season for its proper growth. When the central head is cut numerous sprouts will develop from the leaf axis, each sprout terminating in small green heads. These are cut leaving about six inches of the stem, and are tied in bunches for market. Both stems and heads are cooked and served like cauliflower. Ready for market in about 90 days. Pkt. 10c; oz. 50c; $\frac{1}{4}$ lb. \$1.50. **Green Extra Early**—(True Italian Strain.) Pkt. 10c; oz. 75c.

BRUSSELS SPROUTS

Long Island Improved—Pkt. 10c; oz. 25c; $\frac{1}{4}$ lb. 85c.

SWISS CHARD

Lucullus—An improved type of chard. Of more upright growth than the Silver variety; leaves yellowish-green, much crumpled and curled, mid-rib and veins white; stalks thick, broad and flat, and as large as rhubarb. Pkt. 5c; oz. 10c; $\frac{1}{4}$ lb. 30c; lb. \$1.00.

CABBAGE**Early and Second Early Varieties**

Babyhead—Extra early hard heading sort. Pkt. 15c; oz. 50c; $\frac{1}{4}$ lb. \$1.75.

Golden Acre—An extra early selection of the Copenhagen type, and the earliest of the round headed cabbages, maturing with Jersey Wakefield. Plants small dwarf and compact, with few outer leaves; heads of medium size, round as a ball, hard, solid and very uniform. Pkt. 10c; oz. 50c; $\frac{1}{4}$ lb. \$1.75; lb. \$6.00.

Golden Acre—Special selected stock. Pkt. 25c; oz. \$1.00; $\frac{1}{4}$ lb. \$3.50.

Charlston Large Wakefield—About one week later than Early Jersey Wakefield, but the conical heads are fully one-half larger. Pkt. 5c; oz. 35c; $\frac{1}{4}$ lb. \$1.00.

Copenhagen Market—Very fine, nearly as early as Jersey Wakefield; stem short, heads large, round and solid, with few outer leaves; of an upright growth. Our stock of this popular variety is very early,

uniform and dependable. Pkt. 10c; oz. 40c; $\frac{1}{4}$ lb. \$1.10; lb. \$4.00.

Glory of Enkhuizen—Excellent medium early, short stemmed, foreign variety; heads large, round and very solid, with few outer leaves. One of the most uniform and desirable varieties, suitable alike for garden or field culture. Pkt. 5c; oz. 35c; $\frac{1}{4}$ lb. \$1.00; lb. \$3.50.

All Seasons—Popular kraut cabbage. Pkt. 5c; oz. 30c; $\frac{1}{4}$ lb. 85c; lb. \$3.00.

Earliest Round Red—The earliest red cabbage. Heads large, very uniform and solid. An excellent variety similar to Haco. Pkt. 10c; oz. 35c; $\frac{1}{4}$ lb. \$1.25; lb. \$4.00.

Red Cabbage—Danish Stonehead. Pkt. 5c; oz. 30c; $\frac{1}{4}$ lb. \$1.00.

Savoy—Perfection. Pkt. 10c; oz. 35c; $\frac{1}{4}$ lb. \$1.25.

**Hollander, Ferry Type—Our Own Grown Stock****LATE VARIETIES**

Hollander, Ferry Type, Our Own Grown—Very hardy, sure heading, very solid, of good quality and as one of the very best keepers this is particularly desirable for distant markets or for late spring use. The plants are vigorous and compact, with stem of medium length. They are exceedingly hardy in resisting cold and stand dry weather well. The leaves are distinctly upright, in growth, few but rather large, long and narrow, thick, smooth, bluish green covered with whitish bloom. The heads are medium sized, round, exceptionally solid and stand shipment better than any other late sort.

Plant 14 to 18 inches apart in the row to produce the best shipping size heads. Pkt. 10c; oz. 45c; $\frac{1}{4}$ lb. \$1.50; lb. \$5.00.

Hollander (Lupton's)—Pkt. 10c; oz. 35c; $\frac{1}{4}$ lb. \$1.00; lb. \$4.00.

Hollander, Ferry's Own Grown—Pkt. 10c; oz. 60c; $\frac{1}{4}$ lb. \$2.00; lb. \$7.25.

Danish Ball Head—One of the very best winter sorts and one of the most hardy; heads round and very solid. Our selected stock of this cabbage is unexcelled. Pkt. 5c; oz. 25c; $\frac{1}{4}$ lb. 85c; lb. \$3.00.

Penn State Ball Head—Certified Seed. Days to maturity 130 to 140. The seed we offer is grown for us by the only grower who is supplied with stock seed of the Penn State Ball Head cabbage grown by the Pennsylvania State College..

Penn State shows an average yield of over 20 tons per acre. Hard, tight heads, keeping qualities and the few cracked heads make this one of the best late varieties on the market. Plant 14 to 18 inches apart. Pkt. 15c; oz. 50c; $\frac{1}{4}$ lb. \$1.75; lb. \$6.00.

CAULIFLOWER

1 oz. 3,000 plants

Super Select Snowball—Undoubtedly the finest and most popular early variety. Heads very early, of medium size, firm, compact, solid and very white; plant compact in growth with few short, upright leaves. Pkt. 10c; oz. \$2.00; $\frac{1}{4}$ lb. \$7.00.

Dry Weather (Danish Giant)—One of the very best varieties; especially adapted for growing in dry locations. Pkt. 10c; oz. \$1.75; $\frac{1}{4}$ lb. \$6.00.

No. 121 Catskill Type Snowball—Main Crop variety for outdoor planting we believe it to be unsurpassed; its vigorous growth makes it able to withstand weather conditions that make Cauliflower culture a gamble. Not all soils will make the heads that this seed is capable of producing under good soil and temperature conditions. Handsome appearance, high quality heads are the combination of this seed and proper cultural conditions. Its all around worth as the highest type, where cauliflower is successfully produced, entitles it to the widest planting. Pkt. 25c; oz. \$2.25; $\frac{1}{4}$ lb. \$8.00; lb. \$30.00.



Super Select Early Snowball

No. 132 Snowball is prize winner Stock. Features self covering with broad, vigorous leaves; freedom from disease; quick growth; matures all at one time. Recommended for EARLY and Late planting or a succession planting. A marvel of perfection when favored by soil and climate. Pkt. 25c; oz. \$3.00; $\frac{1}{4}$ lb. \$11.00.

CHERVIL

Curled—A variety with crisp, curled leaves; used for flavoring soups and salads. Pkt. 10c; oz. 15c; $\frac{1}{4}$ lb. 35c.

WE SPECIALIZE IN MARKET GARDENER TRADE

Many of the most successful gardeners in the United States and Canada look to us for high grade seeds. Send us a list of the varieties' and quantities wanted and we shall be glad to quote our gardeners' special prices.

FELINS BUNCH TYER

Foot and Electric power. Ties a neat bow knot with either 6 or 8 ply cotton twine or No. 13 braid without change of knoter. Adjusts itself to any size bunch one-quarter inch to six inches in diameter.

Market Gardeners, Florists, Nurserymen, if you have bunches to tie, the New Felins will pay you a big dividend.

TORRENT BUNCH VEGETABLE WASHERS—

FELINS ELECTRIC ROOT WASHER.

Write for catalog and price list.

CARROTS

1 oz. 100 feet drill—3 to 4 lbs per acre

**Chantenay**

Chantenay Half Long (The Model)—Excellent medium early half-long stump rooted variety; roots about 6 inches long, very thick, smooth and of a deep orange-red color. Best for bunching. Pkt. 5c; oz. 10c; ¼ lb. 35c; lb. \$1.00; 10 lbs. \$9.00.

Half Long Stump Rooted Nantes—Roots 6 to 8 inches long, nearly cylindrical, blunt ended, smooth and of bright orange color. Flesh red, sweet and mild, almost coreless. Pkt. 5c; oz. 15c; ¼ lb. 35c; lb. \$1.25.

Danvers Half Long—The best known second early, half-long sort; roots 6 to 8 inches long, tapering to a blunt point; flesh deep orange, tender and good quality. Pkt. 5c; oz. 15c; ¼ lb. 35c; lb. \$1.25.

Morse's Red Cored Chantenay—The tops are shorter and the foliage finer than the regular Chantenay. However, the tops are not brittle and are strong enough to bunch easily.

The roots are refined in appearance with small collars, are evenly stumped and have small rat-tails. Surface of roots, smooth and free from large eyes and small rootlets. Color rich orange, core small and nearly the same color as the flesh. Length 5½ to 6 inches long, 2 to 2½ inches at the shoulder, broad at the bottom, often measuring 1¼ to 1½ inches just above the rat-tail. Matures a little earlier than the regular Chantenay. This New Carrot, we believe, is the best bunching variety offered. Oz. 15c; ¼ lb. 40c; lb. \$1.25.

CHINESE CABBAGE (Chihli)

The seed should be sown any time in July or August, half-inch deep in the row and rows about 24 inches apart. When the plant has grown up 5 to 6 inches thin out to 10 inches apart. Cultivate well and when large enough they should be bleached by earthing up and tying closely with raffia. Any good soil is sufficient, but they seem to head up best in rich, heavy black soil. Six pounds will sow an acre.

Sometimes called Celery Cabbage; resembles Cos Lettuce as much as cabbage, though with a decided cabbage flavor. Pkt. 10c; oz. 40c; ¼ lb. \$1.35; lb. \$4.00.

**Chinese Cabbage**

CELERY

3 oz. to Plant an Acre

Golden Self-Blanching—Our strain of this variety is unexcelled and absolutely reliable; the sort is without doubt the finest early celery in cultivation. Plants compact and stocky, with yellowish-green foliage; stalks perfectly solid, of a fine, nutty flavor, attains a good size; blanches a handsome golden yellow color. Pkt. 15c; oz. 75c; $\frac{1}{4}$ lb. \$2.50; lb. \$9.00.

Golden Plume New Super Select—This new variety is the result of a cross between Easy Blanching and Golden Self-Blanching. It has the hearty robust habit of Easy Blanching and the color of Golden Self-Blanching. It has a very full heart and proved blight resistant. Pkt. 25c; oz. \$1.25; $\frac{1}{4}$ lb. \$5.00.

Tall Golden Self-Blanching—(Paris or New French). This is entirely different from the Old Style of Golden Self-Blanching, fully a month earlier, blanches easier and white, makes a larger and much taller plant. Requires a little more room than the Golden Self-Blanching and there are apt to be a few green stalks. American grown. Pkt. 10c; oz. 65c; $\frac{1}{4}$ lb. \$2.25; lb. \$8.00. French Grown. Pkt. 25c; oz. \$1.50; $\frac{1}{4}$ lb. \$5.50.



Golden Self-Blanching Celery

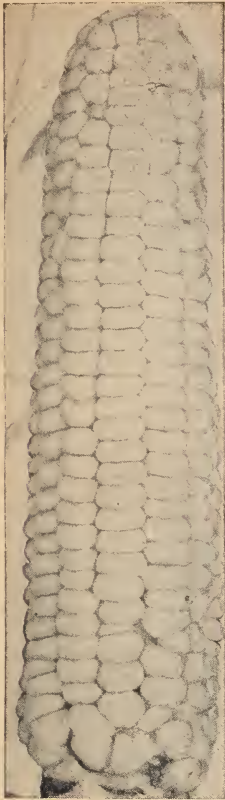
Celeriac or Turnip-rooted Celery

Large Smooth Prague—One of the largest; smooth and almost spherical. Pkt. 5c; oz. 25c; $\frac{1}{4}$ lb. 75c.

CELERY

Golden Phenomenal—The general characteristics are those of the Golden Plume, but it is decidedly taller and the stalks are much longer in the joints. Tall as Paris Golden Self-Blanching, 27 to 28 inches over all and from 8 to 9 inches to the joint. Season for planting is the same as Golden Plume, being intermediate between Tall and Dwarf Golden Self-Blanching.

The plants are heavy, compact and full hearted. Stems broad, thick, brittle and free from strings, of fine flavor and excellent quality all through. Pkt. 25c; oz. \$1.50.



CORN—Sweet

12 pounds per acre—Any variety, Packet 10c

Golden Gem—The earliest yellow or golden eared corn, being a week earlier than Sunshine, of more dwarf habit and bearing a sweet 8-rowed ear equal in size to Golden Bantam, although two weeks earlier than that variety. Pkt. 15c; lb. 30c; 5 lbs. \$1.40; 12 lbs. \$2.75.

Golden Sunshine—Golden Bantam type, maturing a week to 10 days earlier than that variety. Ears $6\frac{1}{2}$ inches long, 12-rowed and sweet. Pkt. 10c; lb. 25c; 5 lbs. \$1.15; 12 lbs. \$2.50.

Golden Hummer—Earlier than Golden Bantam. Large 12-rowed ears. Lb. 30c; 5 lbs. \$1.40; 12 lbs. \$2.75.

Whipple's Early Yellow—A remarkable new yellow sweet corn of much merit. While the stalks grow 6 feet or more in height and the 14-rowed ears are 7 to 8 inches in length, this variety matures three days earlier than Golden Bantam. The kernels are broad, deep and of excellent quality. Lb. 25c; 5 lbs. \$1.15; 12 lbs. \$2.40.

Golden Bantam—Early, golden yellow in color and of highest quality. Ears 6 to 7 inches long, 8-rowed. Our stock has been most carefully selected and is superior to much that is offered. Lb. 25c; 5 lbs. \$1.00; 12 lbs. \$2.15.

Golden Giant—A cross between Golden Bantam and Howling Mob and is one of the few new yellow corns to retain the high quality of its golden parent. In season between Golden Bantam and Bantam Evergreen, of medium growth, with ears 8 inches long, 16 to 18 rowed. Lb. 25c; 5 lbs. \$1.20; 12 lbs. \$2.40.

Bantam Evergreen—A cross between Golden Bantam and Stowell's Evergreen and a most excellent sort of fine quality. Ears 8 inches long, 12 to 14 rowed; matures with Howling Mob; grain rather broad and deep, and a rich golden-yellow color. Lb. 25c; 5 lbs. \$1.20; 12 lbs. \$2.40.

Early Evergreen—Lb. 25c; 5 lbs. \$1.20; 12 lbs. \$2.40.

Stowell's Evergreen—Lb. 25c; 5 lbs. \$1.10; 12 lbs. \$2.25.

Black Mexican—Lb. 25c; 5 lbs. \$1.20; 12 lbs. \$2.50.

CRESS

Extra Curled—A small, curled plant having a pungent flavor and used as a salad. Sometimes called Peppergrass. Pkt. 5c; oz. 15c; $\frac{1}{4}$ lb. 25c.

True Water Cress—For growing along banks of ponds and streams; wholly unlike Extra Curled; leaves are quite large and thick. Pkt. 10c; oz. 45c; $\frac{1}{4}$ lb. \$1.35.

THE PRITCHARD TOMATO (New)

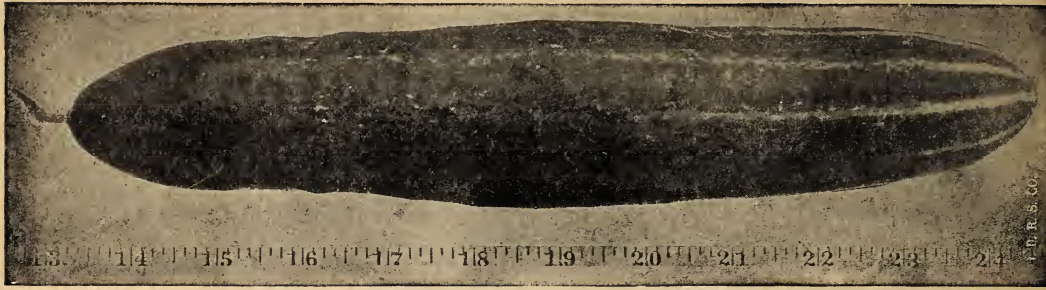
Introduced as Scarlet Topper and officially named Pritchard by the U. S. Department of Agriculture in honor of the late Dr. F. J. Pritchard.

This is a fine early with large, smooth, globular fruits, ripening to a clear scarlet right up to the stem. The flesh is a rich, deep red, with few seeds and no core. Vine growth erect and is well foliated. Like all tomato varieties this sort requires liberal fertilizing to produce big and profitable yields.

Wilt resistant and of intermediate height of vine.

Seedsmen and growers who have tried out this splendid tomato make the claim that it may replace both Earliana and Bonny Best. Pkt. 25c; oz. \$1.00.

CUCUMBERS



Davis' Perfect

1 oz. 60 hills, 2 to 3 lbs. per acre.

Number of days to maturity given for each variety.

Davis' Perfect—An extra long, dark green type of White Spine; retains its color and good qualities long after being picked; fruit is exceptionally long, smooth, and tapering at both ends; flesh crisp, solid, with few seeds; mid-season. 11x2½ inches. 58 days. Pkt. 10c; oz. 15c; ¼ lb. 50c; lb. \$1.50; 10 lbs. \$14.00.

Long fellow—An excellent long, slender, dark green variety equally desirable for greenhouse forcing or out door culture. An ideal type for the private garden or as a "straight pack" variety for shipment to market. 12 to 14 inches long by 2½ inches in diameter. 65 days. Pkt. 10c; oz. 25c; ¼ lb. 75c; lb. \$2.25.

Long Green Improved—A standard late, well-known table sort; 12 to 14 inches long, slender, more or less warted, tapering towards the stem end; color dark green, flesh white and firm. 62 days. Pkt. 10c; oz. 15c; ¼ lb. 50c; lb. \$1.50.

Early Fortune—The finest type of White Spine yet produced. Early, very produc-

tive and disease-resistant; fruit 9 inches long, slightly tapering; flesh white, very firm and crisp, with very few seeds; color rich, dark green, which does not fade when shipped a long distance. 58 days. 9x2½ inches. Pkt. 5c; oz. 10c; ¼ lb. 35c; lb. \$1.25.

B. Co. Pickling—56 days. A large type of pickling cucumbers. The ends are abrupt or square and the hardness is unexcelled. Medium green; black spined and one of the best pickling varieties. Pkt. 5c; oz. 10c; ¼ lb. 30c; lb. \$1.00.

Japanese Climbing—58 days. Pkt. 10c; oz. 15c; ¼ lb. 45c.

Jersey Pickling—A very productive variety; fruit long, tapering and bottle-necked; pickles long and very slender. 54 days. 6x2 inches. Pkt. 5c; oz. 10c; ¼ lb. 30c; lb. \$1.00.

Snow's Perfected Pickle—The most symmetrical, best formed and productive pickling sort; early, small, square ended and dark green. Our select strain of this variety is much superior to stocks generally sold under this name. 5x2¼ inches. 56 days. Pkt. 5c; oz. 10c; ¼ lb. 30c; lb. \$1.00.

EGG PLANT

1 oz. 1,000 plants

Black Beauty—Earlier and nearly as large as New York Purple; fruit very dark pur-

ple, which color it holds for a long time. Pkt. 10c; oz. 50c; ¼ lb. \$1.75.

ENDIVE

1 oz. 100 feet drill

Green Curled Winter—The most hardy and vigorous sort; leaves bright, deep green with the outer midribs usually show-

ing a trace of rose; readily blanches a creamy white. Pkt. 5c; oz. 15c; ¼ lb. 45c; lb. \$1.25.

KALE

Dwarf Curled Scotch—A handsome, very fine curled, dwarf spreading variety; foliage long and of an attractive bright green; very hardy. Pkt. 5c; oz. 15c; $\frac{1}{4}$ lb. 35c.

Tall Curled Scotch—2 to 3 feet in height, long plume like leaves. Pkt. 5c; oz. 15c; $\frac{1}{4}$ lb. 35c.

KOHL RABI

Early White Vienna—Extremely early, with distinctly small tops; bulbs medium size, very light green or nearly white and of best quality. Pkt. 5c; oz. 25c; $\frac{1}{4}$ lb. 75c.

Early Purple Vienna—Early and with small top; bulbs medium size and purple in color, flesh white. Pkt. 5c; oz. 25c; $\frac{1}{4}$ lb. 75c.

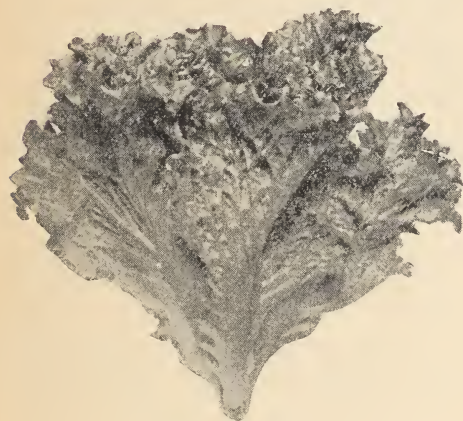
LEEK

1 oz. 100 feet drill

Broad American Flag—The favorite gardener's variety; strong growing, broad

leaved and productive. Pkt. 5c; oz. 20c; $\frac{1}{4}$ lb. 60c.

LETTUCE



Grand Rapids

Grand Rapids (Selected Stock)—The favorite loose-leaved forcing lettuce, and does well in the North for early planting outside. Leaves short, spatulate in shape, excessively blistered and crumpled, and the border heavily fringed; color very light green, with no trace of brown. Our stock of Grand Rapids is unsurpassed. Pkt. 5c; oz. 15c; $\frac{1}{4}$ lb. 45c; lb. \$1.50.

Black Seeded Simpson—A very popular early variety, succeeds most anywhere, and a reliable lettuce. Has broad, crumpled and blistered leaves. The color is a light green. Pkt. 5c; oz. 15c; $\frac{1}{4}$ lb. 40c; lb. \$1.35.

Prize Head Early—(W. S.) A crisp and tender loose-leaved, non-heading sort, and one of the most popular; leaves much crumpled and excessively frilled at the borders; color light brown on a medium green base; quality good. Pkt. 5; oz. 15c; $\frac{1}{4}$ lb. 50c.

New York (Wonderful)—A very large, late, globular heading variety; leaves broad, of thick texture, fairly blistered and crumpled and the borders frilled; color clear dark green; quality good. Known in California and the west as "Los Angeles," and shipped to eastern markets under the misleading name of "Iceberg." Pkt. 10c; oz. 20c; $\frac{1}{4}$ lb. 60c; lb. \$2.00.

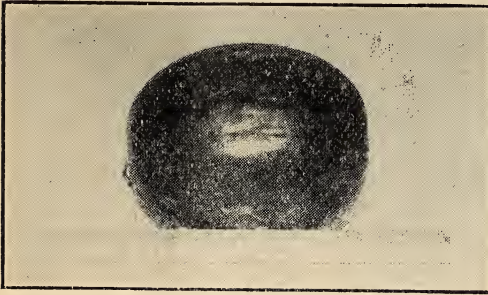
New York No. 12 (Growers Description)—This is a single plant selection of our own culture which we have been breeding for several years. We believe it to be the outstanding selection of this variety and a great improvement over any existing types of New York.

No. 12 is much earlier, makes large solid heads, uniform in maturing and of the flat head type. Several fields of this strain produced better than 80% No. 1 heads in 65 days from planting. Pkt. 10c; oz. 25c; $\frac{1}{4}$ lb. \$1.00; lb. \$3.50; 5 lbs. \$15.00.

White Paris Cos (Romaine) (W. S.)—A medium large, strictly self-closing lettuce, making a well-blanching, firm, loaf-shaped head; leaves oval in form, flat and smooth; color medium dark green; quality excellent. Also known as Trianon Cos. Pkt. 5c; oz. 15c; $\frac{1}{4}$ lb. 50c.

New Chicken Lettuce—Here is a genuine lettuce which will yield as much or more chicken or rabbit feed as any "greens" plant. When once cut it starts to grow again. The leaves can be pulled off each stem like a kale. Chicken Lettuce does not make a head, but sends up a stout stalk three or four feet high, just loaded with leaves. Oz. 15c; $\frac{1}{4}$ lb. 45c; lb. \$1.35.

WATERMELON



Angelino

Angelino Black Seeded—It is a very attractive melon, nearly round, of medium size with dark green skin, irregularly striped a deeper shade. The flesh is a very sparkling scarlet, and its edible qualities are unexcelled. We believe this variety, on account of its shipping qualities, earliness and productiveness, to be one of the best we offer. The average weight of the melons is 20 pounds. The veining on the Angelino stands out when they are ripe, hence there is no difficulty in telling when they are ripe. Edible in 90 days. Oz. 15c; $\frac{1}{4}$ lb. 35c; lb. \$1.25.

Cole's Early—One of the best and earliest of the early sorts. It is medium sized, round and very hardy. Rind dark green and lighter striping. Flesh pink and of fine quality. Seeds are black. Pkt. 5c; oz. 10c; $\frac{1}{4}$ lb. 35c; lb. \$1.00.

Improved Kleckley Sweet—Recently introduced, the seeds are snow white with no trace of color and are slightly larger than the regular Kleckley Sweet. The melons are cylindrical, very dark green with faint creases or ridges running lengthwise. The size is somewhat larger than Kleckley Sweet. The edible qualities are splendid and it no doubt has a large future. The rind perhaps is harder than Kleckley Sweet, making it a shipper for moderate distances. Edible in 87 days. Size 22x10 inches. Pkt. 5c; oz. 10c; $\frac{1}{4}$ lb. 30c; lb. 90c.

Tom Watson—Probably the best shipping melon, and one of the best main crop sorts; grows to a very large size. Fruit large and long in shape, colored a medium green with a light tracing of a darker shade, not unlike Peerless in its coloring; flesh rich red and of good quality; seeds brown. Selected stock. Pkt. 5c; oz. 10c; $\frac{1}{4}$ lb. 30c; lb. \$1.00.

Round Dark Icing—Medium to large in size, moderately early and good in quality; fruit round and dark green; flesh bright red; seeds white. Pkt. 5c; oz. 10c; $\frac{1}{4}$ lb. 30c; lb. 90c.

Citron, Red Seeded—The old, well-known, red-seeded preserving melon. Pkt. 5c; oz. 10c; $\frac{1}{4}$ lb. 35c; lb. \$1.00.

OKRA

Perkins' Mammoth (Long Green)—Very early and productive. Plants 3 feet high; pods deep green, very long, slender and slightly corrugated; a desirable market variety. Pkt. 10c; oz. 15c; $\frac{1}{4}$ lb. 25c; lb. 75c.

DUNLOP'S IMPORTED MOSS PEAT

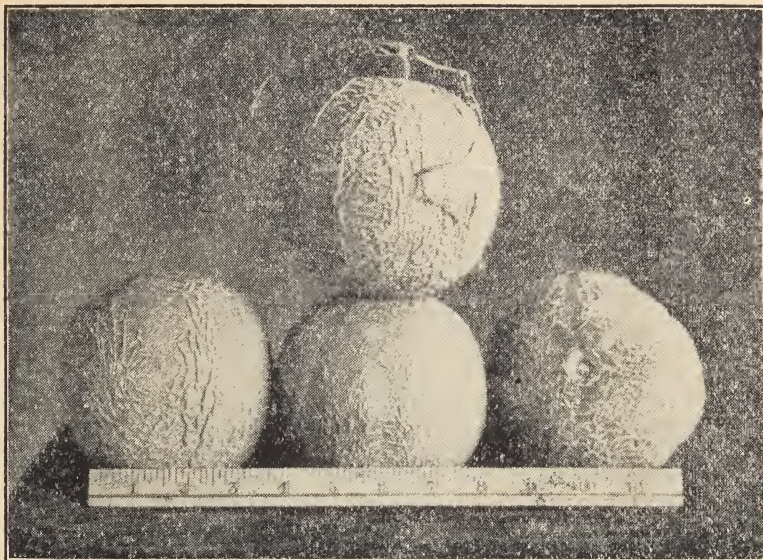


Special Home Package containing 4 quarts Imported German Moss Peat for use in window boxes, potted plants, ferneries, etc. Holds fifteen times its weight in moisture. Keeps the soil loose, feeding moisture to the roots. Also sold in 20 bushel, 10 bushel and 5 bushel bales. Altogether different from the fuel peats found in Northwestern United States. Ask for prices.

MUSKMELON

1 oz. 30 Hills

4-5 lbs. per Acre

**Honey Rock**

Our melon growers demand the best strains of melon seed obtainable and we aim to supply seed that satisfies the most critical.

Honey Rock—A rather new melon originating in Indiana and acquiring immediate popularity on account of its high quality. Of medium size with a gray-green skin moderately covered with a heavy, coarse netting; rich salmon flesh. One of the best sellers where buyers demand a real sweet, salmon fleshed melon. Pkt. 10c; oz. 15c; $\frac{1}{4}$ lb. 50c; lb. \$1.50.

Delicious—Best described as an early strain of the famous Bender or Golden Osage melon and while a trifle smaller, possesses all the good qualities of its parent. Pkt. 10c; oz. 15c; $\frac{1}{4}$ lb. 50c; lb. \$1.75.

Lake Champlain—Plants vigorous, healthy, melons medium sized, densely netted, flesh deep, sweet and golden yellow in color. The first and best muskmelon in the Minneapolis market. Pkt. 10c; oz. 20c; $\frac{1}{4}$ lb. 50c; lb. \$1.50.

Extra Early Osage—A week to ten days earlier than the old type Osage, and nearly as large; flesh very thick, salmon colored and of high quality. Form, color and general appearance similar to Osage. Pkt. 5c; oz. 15c; $\frac{1}{4}$ lb. 50c; lb. \$1.75.

Golden Osage—A very popular variety in the east. A selection from Surprise and a close kin to Irondequoit, differing from that variety in being more oblong, more full and rounded at the ends, not quite as well netted or as early; skin light greenish-yellow when ripe. A very delicious, large salmon-fleshed melon with superior shipping and keeping qualities. Pkt. 10c; oz. 15c; $\frac{1}{4}$ lb. 45c; lb. \$1.50; 5 lbs. \$6.25.

Milwaukee Market—A variety very popular in Chicago and Milwaukee markets. Of Surprise parentage and close kin to Bender's Surprise, although earlier. Fruits of medium size, nearly round, lightly ribbed and fairly netted; skin light green; flesh thick, salmon colored and very sweet. Pkt. 5c; oz. 15c; $\frac{1}{4}$ lb. 50c; lb. \$1.50.

Osage, or Miller's Cream—A rather large, main crop, oval melon of very superior quality; fruit dark green, slightly ribbed and well covered with a shallow, gray netting; flesh rich orange-salmon, exceedingly thick, with a small seed cavity. Pkt. 5c; oz. 10c; $\frac{1}{4}$ lb. 35c; lb. \$1.25.

Honey Dew—Pkt. 10c; oz. 15c; $\frac{1}{4}$ lb. 50c; lb. \$1.75.

Long Yellow Cantaloupe—Large, long, oval and deeply ribbed; flesh light salmon, very thick and sweet. Pkt. 10c; oz. 15c; $\frac{1}{4}$ lb. 50c.

PARSLEY

Champion Moss Curled—A compact growing sort; leaves are a uniform dark green color, very finely cut and so closely curled as to resemble bunches of moss; one of the most useful and decorative sorts. Pkt. 5c; oz. 15c; $\frac{1}{4}$ lb. 35c; lb. 90c.

Large Rooted Hamburg—The edible roots of this variety resemble a small, thick parsnip in shape and color, and are extensively used for flavoring soups and stews;

leaves plain. Pkt. 5c; oz. 15c; $\frac{1}{4}$ lb. 35c; lb. \$1.00.

No. 622—A fine selection of the Moss Curled Type. This strain is very hardy, will remain deep green when all other varieties have gone yellow. Right length for bunching. We recommend this variety as it has the color and growing qualities desired for a market growers strain. Pkt. 10c; oz. 25c; $\frac{1}{4}$ lb. 75c.

PARSNIP

1 oz. 200 feet drill—3 to 4 lbs. per acre

Hollow Crowned (Large Sugar)—Better known and more generally grown than any other sort; roots smooth, usually 15

inches long by 3 inches in diameter at the top; tender and sugary. Pkt. 5c; oz. 10c; $\frac{1}{4}$ lb. 25c; lb. 75c.

PEAS

2 lbs to 100 feet drill—150 lbs. Dwarf—50 lbs. tall per acre

Any variety, Pkt. 10c



Prince Edward

Mammoth Podded Extra Early—Larger than Alaska and matures practically as early. Height 3 feet. Pods dark green, 4 inches long, broad and containing 7 extra large light green peas. Lb. 30c; 5 lbs. \$1.20; 14 lbs. \$2.80; 100 lbs. \$19.00.

Onward—The best mid-season pea of recent introduction. Lb. 35c; 5 lbs. \$1.40.

Laxton's Progress—The earliest large podded dwarf sweet pea. Height 18 inches. In season four days earlier than Laxtonian. Pods 4 inches long, broad and pointed, deep green in color, containing 8 large, dark green peas of high quality. Lb. 35c; 5 lbs. \$1.50; 15 lbs. \$3.75; 100 lbs. \$22.00.

Thomas Laxton—Lb. 30c; 5 lbs. \$1.20; 14 lbs. \$2.80; 100 lbs. \$19.00.

Peter Pan—Lb. 35c; 5 lbs. \$1.50; 14 lbs. \$3.50.

Little Marvel—Lb. 30c; 5 lbs. \$1.35; 14 lbs. \$3.00.

Hundredfold—Lb. 35c; 5 lbs. \$1.50; 14 lbs. \$3.50.

Potlach—Lb. 30c; 5 lbs. \$1.25; 14 lbs. \$2.80.

Alderman—Of the Telephone type but with darker pods and peas. Height 4 feet. Vine strong and stout, medium green; pods $4\frac{3}{4}$ inches long, very broad, dark green, pointed, straight, though slightly curved at the point, containing 9 large, medium green peas of finest quality. Lb. 30c; 5 lbs. \$1.20; 14 lbs. \$2.80; 100 lbs. \$19.00.

Prince Edward—One of the best of the large, dark podded Telephone types, and one of the most productive. Height 4 feet. Vine and foliage stout and heavy, medium green; pods dark green, $4\frac{3}{4}$ inches long, broad and pointed, containing 8 to 9 very large medium green peas. Lb. 30c; 5 lbs. \$1.20; 14 lbs. \$2.80; 100 lbs. \$19.00.

Giant Sugar—A new edible pod sort producing large pods of excellent quality. Seeds brown, blossoms purple. Lb. 35c; 5 lbs. \$1.40.

Over 14 pounds at the 100 pound rate.

PRICES SUBJECT TO CHANGE WITHOUT NOTICE

PEPPER

1 oz. 1,500 Plants



Harris Early Giant

California Wonder—One of the best early, large and productive peppers. Pkt. 10c; oz. 65c; $\frac{1}{4}$ lb. \$2.00.

Large Bell or Bull Nose—Pkt. 10c; oz. 40c; $\frac{1}{4}$ lb. \$1.25.

Super Select, Long Thick Red—Similar to the Long Red Cayenne, thicker meat and averages about 1 inch at stem end. Early, prolific and one of the best sellers in the Minneapolis Market. Specially selected stock grown for us by one of the experienced and successful pepper growers in the state. Pkt. 10c; oz. 50c; $\frac{1}{4}$ lb. \$1.75.

Super Select Harris' Early Giant—A valuable addition to our list of Peppers; in size and appearance like the old Giant Crimson, but much earlier, thicker walled, and more prolific. Vines about 20 inches high, fruit $4\frac{1}{2}$ inches long, $3\frac{1}{2}$ inches through. Heavy in yield and weight. Especially adapted to our northern climate where the later varieties will not fully mature. Exceptional yielder. We recommend this to the gardener with confidence that it will be more than satisfactory. Pkt. 10c; oz. 40c; 4 oz. \$1.50.

Worldbeater—One of the very best of the large peppers, being a cross between Chinese Giant and Ruby King, having the longer form and earliness of the latter with the size of the former. Fruits 4 lobed, 5 inches long by $3\frac{1}{2}$ inches in diameter; flesh very thick and mild; exceedingly productive and a good shipper. Pkt. 10c; oz. 35c; $\frac{1}{4}$ lb. \$1.25.

Worldbeater, Select Stock—Supply limited. Pkt. 25c; oz. \$1.00.

Long Red Cayenne—Pkt. 10c; oz. 35c; $\frac{1}{4}$ lb. \$1.25.

Pimento—Sunnybrook strain. The sweetest and most prolific of all Pimento peppers, with smooth, bright scarlet fruits, 3 inches thick and 2 to $2\frac{1}{2}$ inches deep. The flesh is thick and sweet. Plants grow 15 inches tall. Pkt. 10c; oz. 75c; $\frac{1}{4}$ lb. \$2.50.

PUMPKINS

$\frac{1}{4}$ lb. 100 Hills—4 to 5 lbs. per acre

Sweet or Sugar (New England Pie)—Fruit small, round, flattened at the ends, and slightly ribbed; skin and flesh deep orange-yellow; flesh very thick and of high quality. Pkt. 5c; oz. 10c; $\frac{1}{4}$ lb. 30c; lb. \$1.00.

Golden Oblong—Oblong in shape and very uniform; usually 15 to 20 inches long and 8 to 10 inches in diameter; skin rich golden orange, flesh light golden yellow; an excellent keeper and of fine quality. Pkt. 5c; oz. 15c; $\frac{1}{4}$ lb. 35c; lb. \$1.00.

King of the Mammoth (Potiron)—The giant among pumpkins; specimens have been grown to weigh 250 pounds and reaching 2 feet or more in diameter; fruit round and flattened. Slightly ribbed; skin salmon-orange, flesh bright yellow and very thick. Pkt. 5c; oz. 15c; $\frac{1}{4}$ lb. 50c; lb. \$1.50.

Large Cheese, or Connecticut Field—Large, round, flattened fruits, much ribbed and creamy-buff in color; flesh yellow, very deep and of fine quality; one of the best canning sorts. Oz. 10c; $\frac{1}{4}$ lb. 25c; lb. 75c.

ONION

1 oz. 100 feet drill—4 lbs. per acre



Mountain Danvers

Our Selected strains of Red, Yellow and White Globe seed is grown only from the most perfect bulbs for an especially critical trade.

Mountain Danvers—Onion seed grown for us on the western slope of the Rocky Mountains at an elevation of 5,000 feet is an early selection from Yellow Globe Danvers. Bulbs medium globe shaped, small neck, good color and long keeping. Fully ten days earlier than Southport Yellow Globe, especially adapted for peat and muck soils, yields of 600 bags from one acre are reported. Illustration above is reproduced from actual photograph. Pkt. 10c; oz. 20c; $\frac{1}{4}$ lb. 65c; lb. \$2.00; 10 lbs. \$18.00.

Mountain Red Globe—Like the Mountain Yellow Globe the Red is earlier than our Select Southport Red Globe, good color and shape, thin necked and an excellent keeper. High altitude Colorado grown. Supply limited. Pkt. 10c; oz. 20c; $\frac{1}{4}$ lb. 60c; lb. \$2.00; 10 lbs. \$18.00.

Southport Red Globe Selected—Pkt. 5c; oz. 20c; $\frac{1}{4}$ lb. 50c; lb. \$1.75; 10 lbs. \$16.00.

Southport Yellow Globe Selected—Pkt. 5c; oz. 20c; $\frac{1}{4}$ lb. 50c; lb. \$1.75; 10 lbs. \$16.00.

Southport White Globe Selected—Pkt. 5c; oz. 25c; $\frac{1}{4}$ lb. 65c; lb. \$2.25; 10 lbs. \$20.00.

White Portugal—Pkt. 5c; oz. 20c; $\frac{1}{4}$ lb. 60c; lb. \$2.00; 10 lbs. \$18.00.

BUNCHING ONION

Delas Bunching—This is a species of onion which does not form a bulb. In our trials last season this produced long white brittle stems, mild and tender. We feel warranted in listing and recommending it to our growers for trial. Oz. 25c; $\frac{1}{4}$ lb. 90c; lb. \$3.00.

White Bunching—A quick growing White Globe onion for bunching and not recommended for large onions. Pkt. 10c; oz. 25c; $\frac{1}{4}$ lb. 60c; lb. \$2.00; 5 lbs. or more, lb. \$1.75.

Riverside Sweet Spanish—A very large globe-shaped, light yellow onion with small top and an exceptionally fine shipper. It is a Spanish variety resembling Prizetaker, which has quickly become very popular. Pkt. 10c; oz. 30c; $\frac{1}{4}$ lb. 90c; lb. \$3.00.

ONION SETS

Quantity prices on request.

Plant sets for early supply of tender young onions.

White Bottom—Lb. 30c; 4 lbs. \$1.10.

Yellow Bottom—Lb. 30c; 4 lbs. \$1.10.

RADISH

1 oz. 100 feet drill—8 to 10 lbs. per acre

**EARLY SCARLET GLOBE
SUPER SELECT**

We have an exceptionally fine stock of this superb variety. It is one of the very earliest of the forcing radishes and does equally well outside; roots are of fair size, globe-shaped and with a very small top; always crisp and tender; color a bright scarlet. By **Super Select**, applied to our stock of this radish, we mean: seed is grown by Rice in Michigan, stock seeds are all produced from carefully sorted, selected and transplanted roots and are not surpassed for earliness and purity.

Samples are drawn from every bag, sown in greenhouse and proven for germination and variety. Pkt. 5c; oz. 10c; $\frac{1}{4}$ lb. 25c; lb. 85c; 10 lbs. \$7.50.

Forcing Scarlet Globe—Crisp, thin skinned, brilliant scarlet. Matures in 22 days. Grown from transplanted roots and specially recommended for greenhouse culture. Pkt. 10c; oz. 15c; $\frac{1}{4}$ lb. 35c; lb. \$1.00.

Rice's Saxa-Forcing—Pkt. 5c; oz. 10c; $\frac{1}{4}$ lb. 30c; lb. \$1.00.

Sparkler White Tipped—Pkt. 5c; oz. 10c; $\frac{1}{4}$ lb. 25c; lb. 90c.

French Breakfast—Pkt. 5c; oz. 10c; $\frac{1}{4}$ lb. 30c; lb. \$1.00.

Crimson Giant—Extremely large, but never pithy. One of the best for out-door culture. Top is a little too large for a forcing sort; intermediate in season. Pkt. 5c; oz. 10c; $\frac{1}{4}$ lb. 25c; lb. 90c.

Icicle—The leading long white radish and one of the earliest; roots are somewhat shorter, broader at the top and more square shouldered than Lady Finger, also matures a little earlier; about 6 inches long and white throughout. Pkt. 5c; oz. 10c; $\frac{1}{4}$ lb. 25c; lb. 80c.

SALSIFY, OR VEGETABLE OYSTER

1 oz. 60 feet drill—10 lbs. per acre

Mammoth Sandwich Island—An improvement on the ordinary type, producing larger, thicker, tapering, almost white

roots, which are less liable to branch; leaves larger and flowers rose colored. Pkt. 10c; oz. 25c; $\frac{1}{4}$ lb. 75c; lb. \$2.25.



Super Select, Early Scarlet Globe

Vick's Scarlet Globe—Imported seed. Pkt. 5c; oz. 10c; $\frac{1}{4}$ lb. 20c; lb. 55c; 10 lbs. \$5.00.

FALL OR WINTER VARIETIES

California Mammoth White Winter—Pkt. 5c; oz. 10c; $\frac{1}{4}$ lb. 30c; lb. \$1.00.

Rose China Winter (Scarlet China)—Pkt. 5c; oz. 10c; $\frac{1}{4}$ lb. 30c; lb. \$1.00.

Round Black Spanish—Pkt. 5c; oz. 10c; $\frac{1}{4}$ lb. 25c; lb. 80c.

SPINACH

1 oz. 100 feet drill—12 to 15 lbs. per acre



Giant Leaved Nobel

Giant Leaved Nobel—By far the best of the smooth leaved sorts. It produces a large mass of rather smooth, very thick, rounded leaves, of enormous size and although it is a very quick grower, it stands long before bolting. "Nobel" is an ideal variety for truckers and for canners. Oz. 10c; $\frac{1}{4}$ lb. 15c; lb. 35c; 10 lbs. \$3.00.

Extra Dark Green Bloomsdale—A darker and better strain of the Reselected Bloomsdale, crumpled leaves. Matures in 40 days. Oz. 10c; $\frac{1}{4}$ lb. 15c; lb. 35c; 10 lbs. \$3.00.

Juliana—One of the best second-early varieties; grows close to the ground; has very dark green crumpled leaves which keep fresh looking and retain their crispness a long time after being cut; stands well. Pkt. 5c; oz. 10c; lb. 35c; 10 lbs. \$2.75; 100 lbs. \$25.00.

SPINACH

Long Standing Bloomsdale—Darker green and more crumpled than Bloomsdale, a little later and will stand ten to twelve days longer before bolting to seed. Oz. 10c; $\frac{1}{4}$ lb. 20c; lb. 40c; 10 lbs. \$3.00.

New Zealand (Tetragonia Expansa)—Entirely distinct from the true Spinach; plant tall and spreading with numerous side shoots; leaves medium green, rather small and pointed; grows well in hot weather and under adverse conditions. Pkt. 10c; oz. 15c; $\frac{1}{4}$ lb. 25c; lb. 75c.

GIANT ZINNIA COLLECTION

We offer six packets named California Giants and Dahlia Flowered Zinnias; our selection, each a different variety and worth 75c, for 50c postpaid.

SQUASH

2 oz. 100 hills—3 to 4 lbs. per acre



Warted Hubbard

Hubbard, Warted—Similar in size and quality to the well-known Hubbard, but is more heavily warted and a very dark green, almost black in color. Our stock of this variety is exceptionally true. Pkt. 5c; oz. 10c; $\frac{1}{4}$ lb. 35c; lb. \$1.25.

Mammoth Chili—Grown for exhibition and stock feeding; specimens have been grown to weigh upwards to 150 pounds; fruits oblong, skin quite smooth but with broad open netting and rich orange-yellow color. Pkt. 5c; oz. 15c; $\frac{1}{4}$ lb. 40c; lb. \$1.35.

Blue Hubbard—A very large squash of the Hubbard shape, but the color is blue-gray. The shell is very hard and the squash keeps a long time. Pkt. 10c; oz. 15c; $\frac{1}{4}$ lb. 40c; lb. \$1.25.

Marrow, Italian Vegetable (Cocozella)—A summer variety of bush habit; fruits oblong, furrowed with 5 ribs, 12 to 16 inches in length and 5 inches in diameter,

color dark green, marbled with yellow and dark green stripes. Pkt. 10c; oz. 15c; $\frac{1}{4}$ lb. 50c; lb. \$1.50.

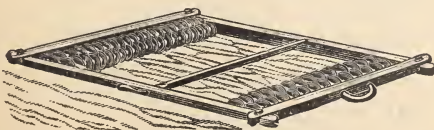
Table Queen or Des Moines—Vines vigorous and productive; fruits 6 to 8 inches long and 4 to 6 inches in diameter. Shell hard, smooth with ridges, dark green and long keeping. Pkt. 10c; oz. 20c; $\frac{1}{4}$ lb. 45c; lb. \$1.50.

Crookneck, Giant Summer (Bush)—Pkt. 5c; oz. 15c; $\frac{1}{4}$ lb. 40c; lb. \$1.25.

Scallop, Mammoth White Bush—Pkt. 5c; oz. 15c; $\frac{1}{4}$ lb. 40c; lb. \$1.25.

Straightneck, Giant Summer—A selection from the Crookneck squash but with a straight rather than a crooked neck. Fruits intensely warted, 18 to 20 inches long, deep orange in color with a thick, meaty neck. Pkt. 10c; oz. 15c; $\frac{1}{4}$ lb. 50c; lb. \$1.75.

MEEKER SMOOTHING HARROW



WRITE FOR
CATALOG AND PRICES

Meeker Harrow—Has become a great favorite among all types of gardeners and farmers. It has two sets of rollers containing 58 disks. These grind all lumps and clods into a fine, powdery soil, and with the smoothing board makes a field into a better seed bed than any other harrow known. Regular size, 6 ft. 8 in. by 6 ft.

TOMATO

1 oz. 1,500 Plants



Earliana, Super Select

Super-Standard Bonny Best (Stokes)

—An exceptional outstanding strain, heavy yielder of uniform large, smooth, round, high-colored scarlet fruits, very early. This seed selected with great care and cost will produce top price tomatoes. Yields reported as high as 14 tons to the acre, maturing before market glut. We recommend a trial against the best tomato you have. For Greenhouse or Outdoor. Pkt. \$1.00; ½ oz. \$2.50; oz. \$4.00; ¼ lb. \$15.00.

Bonny Best—An early, medium sized smooth tomato. Fruits grow in clusters in the center of the plant. Ripens uniformly to a bright red. It is very productive. Pkt. 5c; oz. 45c; ¼ lb. \$1.50; lb. \$5.50.

Break O'Day—The most recent introduction from the Department of Agriculture and one of the best. About ten days earlier than Marglobe with fruit as large and nearly as productive. Plant growth quite open in habit; fruits scarlet, fairly globular. 95 days. Super Select Strain. Pkt. 25c; oz. \$1.50; ¼ lb. \$5.00.

Regular Stock—Pkt. 15c; oz. \$1.00; ¼ lb. \$3.00.

John Baer—An early, productive, red tomato on the order of Chalk's Jewel. We have a splendid, uniform stock of this variety. Pkt. 5c; oz. 35c; ¼ lb. \$1.20.

Earliana, Super Select—Seed saved from crown-set globe-shaped fruit from selected extra early plants. Pkt. 10c; oz. \$1.00; ¼ lb. \$3.50.

Earliana, Spark's—The earliest and best of the very early tomatoes; very productive for an early sort; fruit of fair size, round, smooth and solid, and produced in clusters in the center of the plant; color bright scarlet. Pkt. 5c; oz. 40c; ¼ lb. \$1.30.

John Baer, Super Select—Seed saved from crown-set fruits from extra early plants. Pkt. 10c; oz. \$1.00; ¼ lb. \$3.50.

Stone—A large, smooth, bright red late tomato. A great favorite with market gardeners and canners. Very productive and dependable. Pkt. 5c; oz. 40c; ¼ lb. \$1.25.

Golden Queen—A large yellow tomato. Smooth, solid and fine flavor. Pkt. 5c; oz. 40c; ¼ lb. \$1.50.

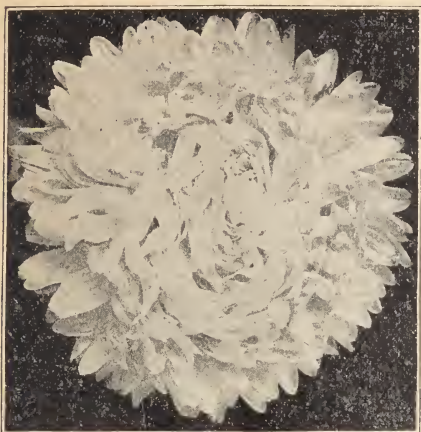
Dwarf Champion—Pkt. 10c; oz. 35c; ¼ lb. \$1.25; lb. \$4.50.

Marglobe—Pkt. 15c; oz. 50c; ¼ lb. \$1.75; lb. \$6.00.

Ponderosa—Pkt. 10c; oz. 55c; ¼ lb. \$2.00.

Yellow Plum—A small plum-shaped tomato, used for pickling and preserving. Pkt. 5c; oz. 40c; ¼ lb. \$1.50.

Yellow Husk—Ground cherry, used for preserving. Pkt. 5c; oz. 40c; ¼ lb. \$1.50.



Aster

Early Beauty—Plants 2 to 3 feet high, of branching habit. Flowers large, borne on long and stout stems, from 18 to 24 inches. One of the best cut flower varieties. Azure Fairy dark lavender), Black Prince (black blue), Carmine Rose, Crimson, Rose, September Beauty (flesh pink), and White. Pkt. 10c; oz. \$1.50.

Finest Mixed—Pkt. 10c; oz. \$1.25.

Queen of the Market—An extra early variety, bearing large double flowers, plants of branching habits; long stems, a popular cut flower variety. 2 feet. Flesh, Rose Purple, Crimson, White, and Lavender. Each, Pkt. 5c; $\frac{1}{4}$ oz. 35c; oz. \$1.00.

Mixed—All colors. Pkt. 5c; $\frac{1}{4}$ oz. 30c; oz. 90c.

Perennial Aster (Michaelmas Daisy)—Large flowering mixed. Pkt. 10c; $\frac{1}{4}$ oz. 65c; oz. \$2.00.

Single Aster—Marechal Joffre, New Scarlet. Pkt. 10c.

Single Aster—Mixed colors. Pkt. 10c.

BALSAM (Lady Slipper)

Camellia Flowered—Mixed. Pkt. 10c; $\frac{1}{4}$ oz. 20c; oz. 65c.

Rose Flowered—Mixed. Pkt. 10c; $\frac{1}{4}$ oz. 20c; oz. 60c.

BEANS

Scarlet Runner—Quick growing vine. Pkt. 5c; oz. 10c.

BELLIS OR DOUBLE ENGLISH DAISY

Giant Mammoth White (Novelty)—Long stemmed. Pkt. 15c; $\frac{1}{4}$ oz. 60c.

Giant Mammoth Rose—Pkt. 15c; $\frac{1}{4}$ oz. 60c.

Montrosa Pink—Pkt. 15c; $\frac{1}{4}$ oz. 60c.

Montrosa Red—Pkt. 15c; $\frac{1}{4}$ oz. 60c.

Crispa (Novelty) Cherry—Pkt. 25c.

Montrosa—Finest Mixed—Pkt. 10c; $\frac{1}{4}$ oz. 50c.

BOLTONIA

Showy Native Perennial—4 to 6 feet, daisy-like flowers. July to September.

Asteriodes—H. P. White. Pkt. 10c.

Latisquama—H. P. Lilac Pink. Pkt. 10c.

BRACHYCOMBE

Swan River Daisy—H. A. Fine mixed. Pkt. 10c.

BROWALIA

Elata—Mixed Blue and White; fine bedder. Pkt. 5c; $\frac{1}{4}$ oz. 30c.

BUTTERFLY FLOWER

Schizanthus—Dr. Badger's mixed colors. Pkt. 10c.

CALENDULA

The Ball—Color Golden Orange, long stemmed. Pkt. 25c; $\frac{1}{4}$ oz. 50c; oz. \$1.50.

Radio—Large petals, double flowers beautifully quilled. Color Glittering Orange. Pkt. 25c; $\frac{1}{4}$ oz. 50c; oz. \$1.50.

Campfire or Sensation—Large flowers. Color Rich Orange with Scarlet Sheen. Pkt. 25c; $\frac{1}{4}$ oz. 60c; oz. \$2.00.

Orange King—Orange Red. Florists strain. Pkt. 5c; oz. 25c.

Lemon King—Lemon Yellow. Pkt. 5c; oz. 25c.

CALLIOPSIS

Easy growing annual, thrives in any soil. **Mixed**—All colors. Pkt. 5c; $\frac{1}{4}$ oz. 20c.

CAMPANULA (Canterbury Bells)

Old fashioned and a favorite with all. Stately and showy and easy to grow. Hardy Biennials.

Calycanthemum—"Cup and Saucer," mixed colors. Pkt. 10c; $\frac{1}{4}$ oz. 35c; oz. \$1.25.

Medium—Single mixed. Pkt. 10c; $\frac{1}{4}$ oz. 20c; oz. 50c.

Medium—Double mixed. Pkt. 10c; $\frac{1}{4}$ oz. 35c; oz. \$1.00.

CANDYTUFT

Giant White Hyacinth Flowered—Florists strain, for forcing or outdoor culture. Pkt. 5c; oz. 50c; $\frac{1}{4}$ lb. \$1.50.

Lilac Umbellata—Pkt. 5c; oz. 40c.

Mixed Umbellata—Pkt. 5c; oz. 30c.

Gibraltarica—P. Lilac. Pkt. 10c; $\frac{1}{4}$ oz. 40c.



Campanula

CANNA

Mixture from the newest named varieties. Pkt. 5c; oz. 25c.

CANARY BIRD VINE

Rapid climber, charming canary-yellow flowers. Pkt. 5c; oz. 25c.

CARDINAL CLIMBER

One of the best annual climbers, free bloomer, fiery cardinal red. Pkt. 10c; $\frac{1}{4}$ oz. 45c; oz. \$1.50.

CARNATION

Marguerite—Mixed colors. Annual. Pkt. 10c; $\frac{1}{4}$ oz. 40c.

Chabauds—Giant double. Pkt. 10c; $\frac{1}{4}$ oz. 50c.

CASTOR BEANS (Ricinus)

Zanzibarienses—Mixed. Pkt. 5c; oz. 15c.

Red Spire—A new and very effective variety with bronzy green foliage and brilliant rosy crimson seed spikes. 6 ft. Pkt. 10c; oz. 40c.

CELOSIA

Cristata or "Cockscomb"—Dwarf, mixed colors. Pkt. 10c; $\frac{1}{4}$ oz. 50c.

Plumosa, Thompsonii—Crimson flowers. Pkt. 10c; $\frac{1}{4}$ oz. 25c.

Plumosa, Thompsonii—Mixed colors. Pkt. 10c; $\frac{1}{4}$ oz. 25c.

Childsii, Chinese Woolflower—Pkt. 10c; $\frac{1}{4}$ oz. 45c.

CENTAUREA

Cyanus—Bachelor Button. Double Blue, Red, White and Rose Florist's strains.

Each Pkt. 5c; $\frac{1}{4}$ oz. 15c; oz. 50c.

Mixed—All colors. Pkt. 5c; $\frac{1}{4}$ oz. 15c; oz. 40c.

Imperialis, Sweet Sultan—Lavender, Purple, Red, White. Each Pkt. 10c; $\frac{1}{4}$ oz. 25c; oz. 75c.

Mixed—All colors. Pkt. 10c; $\frac{1}{4}$ oz. 20c.

Suaveolens—Large, Bright Yellow, Sweet Sultan. Pkt. 10c; $\frac{1}{4}$ oz. 20c.

Candidissima—Silvery White, leaves broadly cut. Pkt. 10c; $\frac{1}{4}$ oz. 50c.

Gymnocarpia—Dusty Miller. Fine cut leaves. Pkt. 10c; $\frac{1}{4}$ oz. 20c.

Montana—Perennial. Blue. Pkt. 10c; $\frac{1}{4}$ oz. 50c.

CHRYSANTHEMUM (Annual Varieties)

Large daisy-like flowers in a variety of brilliant colors, easily grown and fine for cutting.

Carinatum—Tri-color mixed. Pkt. 5c; $\frac{1}{4}$ lb. 15c; oz. 45c.

Coronarium—Fine mixed, double. Pkt. 10c; oz. 40c.

CLARKIA

Elegans—Free flowering hardy annual. Mixed. Pkt. 10c.

CŌBEA

Scandens—Blue, large bell-shaped flowers. Rapid growing climber, will cling to any rough surface. Pkt. 10c; oz. 40c.

COREOPSIS

Lanceolata—Grandiflora, H. P. One of the best hardy plants; large showy yellow flowers. June until frost. Pkt. 10c; $\frac{1}{4}$ oz. 25c.

COSMOS

Early Express—Extra early, flowering in 45 days. Crimson, Pink, White and Mixed. Pkt. 15c; oz. \$2.00.

Extra Early Flowering Mammoth—Crimson, Pink, White and Mixed. Pkt. 5c; $\frac{1}{4}$ oz. 20c; oz. 50c.

Extra Early Double Crested—Mixed colors. Pkt. 20c; oz. \$2.50.

CYNOGLOSSUM

Amabile—Chinese Forget-me-not—Blue. Pkt. 10c; $\frac{1}{4}$ oz. 30c.

CYPRESS VINE

Popular vine with fern-like foliage, masses of star-shaped flowers. Soak seed. Mixed. Pkt. 5c; oz. 30c.

DAHLIA

Finest double varieties, mixed colors. Pkt. 15c; oz. \$2.50.

DELPHINIUM (Perennial Larkspur)

Belladonna—Finest Light Blue shades. Pkt. 10c; $\frac{1}{4}$ oz. 75c.

Bellamosum—Dark Blue. Pkt. 10c; $\frac{1}{4}$ oz. 75c.

Our Own—Special mixed Hybrids. Pkt. 15c; $\frac{1}{4}$ oz. \$1.00.

Wrexham Hollyhock Flowered Hybrids—Pkt. 25c; $\frac{1}{4}$ oz. \$1.50; oz. \$5.00.

DIANTHUS (Pinks)

Chinensis—Chinese double mixed. Pkt. 5c; $\frac{1}{4}$ oz. 20c; oz. 75c.

Heddewig—Double mixed. Pkt. 10c; $\frac{1}{4}$ oz. 30c.

Caesius—Dwarf tufted variety. Various colors. Pkt. 15c; oz. \$1.00.

Deltoides—Dwarf Brilliant Carmine. Pkt. 10c.

Latifolius Atrococcineus Fl. Pl.—Pkt. 10c; oz. \$1.50.

Sweet Wivelsfield—Mixed colors. Pkt. 25c.

DIDISCUS

Blue Lace Flower—Very pretty, much used in design work by florists. Pkt. 10c; $\frac{1}{4}$ oz. 40c.

DIGITALIS (Fox Glove)

Gloxiniiflora—Handsome. 3 to 5 feet. H. P. Mixed. Pkt. 10c; $\frac{1}{4}$ oz. 40c.

DIMORPHOTHECA

(African Golden Daisy)

Mixed Hybrids—Pkt. 10c; $\frac{1}{4}$ oz. 40c.

DOLICHOS (Hyacinth Bean)

Rapid Climber. A.

Darkness—Rich Purple Violet. Pkt. 5c; oz. 30c.

Purple and White—Pkt. 5c; oz. 30c.

ESCHSCHOLTZIA

Aurantiaca—True California poppy, Rich Yellow. Pkt. 5c; $\frac{1}{4}$ oz. 30c.

Mixed Hybrids—Pkt. 5c; $\frac{1}{4}$ oz. 30c.

EUPHORBIA

Variegated—Snow in the mountain. P. Pkt. 10c; oz. 50c.

EVERLASTING FLOWERS

Flowers retain their color for years if cut in bud and hung head downward to dry.

Acroclonium—Mixed. Pkt. 10c; oz. 40c.

Globe Amaranth—Mixed. Pkt. 10c; oz. 40c.

Helichrysum—Mixed. Pkt. 10c; oz. 50c.

Rodanthe—Mixed. Pkt. 10c; oz. 75c.

Xeranthemum—Mixed. Pkt. 10c; oz. 50c.

Statice—Latifolia Perennial. Pkt. 10c; oz. \$1.00.

Statice—Sinuata "True Blue." Pkt. 10c; oz. 75c.

Statice—Suworowii. Crimson. Pkt. 10c; $\frac{1}{4}$ oz. 75c.

FEVERFEW

Matricaria Capensis—Double White. Pkt. 10c.

FOUR O'CLOCK

Mirabilis—Pretty annual. Pkt. 5c; oz. 25c.

GAILLARDIA

Picta, Indian Chief—Single Bronzy Red. Pkt. 5c; $\frac{1}{4}$ oz. 20c.

Picta—Single Mixed—Pkt. 5c; $\frac{1}{4}$ oz. 20c.

Portola Hybrida Perennial—Shades of Bronzy Red, Gold Tipped, very robust. Pkt. 15c; $\frac{1}{4}$ oz. 75c; oz. \$2.50.

Superba Choice Mixed—Perennial. Pkt. 10c; oz. 75c.

GODETIA

Choice Mixed—Pkt. 10c; $\frac{1}{4}$ oz. 20c.

GOURDS

Ornamental—Mixed. Pkt. 5c; oz. 25c.

GYPSOPHILA (Baby's Breath)

Grandiflora White—Paris Market. A. Pkt. 5c; oz. 25c; lb. \$2.00.

Paniculata—Single White. P. Pkt. 10c; $\frac{1}{4}$ oz. 15c.

HELIOTROPE

Lemoines Hybrids—Large Purple and Violet flowers. Pkt. 10c; $\frac{1}{4}$ oz. 60c.

HOLLYHOCK

Chater's Double—Blood Red, Maroon, Newport Pink, Rose, Salmon Rose, White and Yellow. Pkt. 10c; oz. \$1.25.

Chater's Double Mixed—Pkt. 10c; oz. \$1.00.

KOCHIA

Mexican Fire Bush—Pkt. 5c; oz. 25c.

LANTANA

One of the most desirable half-hardy perennial greenhouse or bedding plants, constantly in bloom; Verbena-like heads of Orange, White, Rose and other colored flowers; 2 to 3 feet. Mixed colors. Pkt. 10c; ¼ oz. 30c.

LINUM (Flax)

Perrene—Bright Blue flowers. P. Pkt. 10c.

Annual Scarlet Flax. Pkt. 5c.

LOBELIA

Bedding Queen—Blue, White Eye. Pkt. 10c; ¼ oz. 60c.

Crystal Palace Compacta—Dark Blue. Pkt. 10c; ½ oz. 50c.

Hamburgia—Sky Blue trailing. Pkt. 10c; ½ oz. 40c.

Speciosa—Dark Blue, tall. Pkt. 10c; ¼ oz. 50c.

Sapphire—Dark Blue trailing. Pkt. 10c; ½ oz. 35c.

LUPINS

Annual—Mixed colors. Pkt. 5c; oz. 25c.

Polyphyllus—Mixed colors. P. Pkt. 10c; oz. \$1.00.

MARIGOLD

Tall African—Orange Prince. Pkt. 5c; ¼ oz. 30c.

Tall African—Lemon Queen. Pkt. 5c; ¼ oz. 30c.

Tall African—Mixed. Pkt. 5c; ¼ oz. 25c.

Tall French Double Mixed—Pkt. 5c; ¼ oz. 20c.

Dwarf French Mixed—Pkt. 5c; ¼ oz. 20c.

Legion of Honor—Pkt. 5c; ¼ oz. 25c.

African Orange—All double. Pkt. 15c; ¼ oz. 75c.

MIGNONETTE

Machet, Sweet Scented—Pkt. 5c; ¼ oz. 25c; oz. 75c.

New York Market—Select florist's strain. Pkt. 10c; ¼ oz. 45c; oz. \$1.50.

Mixed Large Flowering Sorts—Pkt. 5c; ¼ oz. 15c; oz. 35c.

MOONPENNY DAISY

Maximum King Edward VII—Considered the finest of all, with flowers of extraordinary size, of purest white, perfect form, and exceedingly free-flowering. A splendid addition to this useful hardy perennial. Pkt. 10c; ¼ oz. 30c.

MORNING GLORY

Heavenly Blue—Immense flowers, Sky Blue. Pkt. 10c; ¼ oz. 25c.

Imperial Japanese—Giant flowering. Pkt. 10c; oz. 25c.

Mixed—Early flowering. Pkt. 5c; oz. 15c.

GATOR-HIDE

Mulch Paper

In Two Types and Two Widths: Type A—for ANNUALS—primarily in field culture:

- 18" width—300 linear yards to the roll\$3.50
- 36" width—300 linear yards to the roll\$7.00

Type B—for PERENNIALS—in field culture and ALL garden work:

- 18" width—150 linear yards to the roll\$3.50
- 36" width—150 linear yards to the roll\$7.00

Special Prices for Larger Quantities

SHEPS PLANT SPRAY



This NON-POISONOUS spray gives positive protection against both sucking and chewing insect pests, including Aphids, Thrips, Green Flies, White Flies, Mealy Bugs, Worms, Caterpillars and others. Harmless to humans, birds, animals and pets. Will not injure the most delicate plants. Benefits soil and foliage. Absolutely the easiest spray to mix—no soapsud solution, perfect emulsion—20 seconds from bottle to plant.

PRICES POSTPAID

2-oz. Bottle (makes 4 gals Spray Sol.)	\$.35
8-oz. Bottle (" 16 " " ")75
Pint Bottle (" 32 " " ")	1.25
Quart Can (" 64 " " ")	2.00
Gallon Can (" 256 " " ")	6.35
5-Gal. Can (" 1280 " " ")	30.00

Bulk Prices Quoted On Request

MYOSOTIS

Palustris Blue—Rich Indigo-blue flowers. The finest and most effective Dark Blue variety; 9 inches. Pkt. 10c; $\frac{1}{4}$ oz. 75c.

Ruth Fisher—Large flowering Light Blue, best for pot culture and bedding. Pkt. 25c; $\frac{1}{8}$ oz. \$1.50.

NASTURTIUM

Tall Growing—Finest mixed. Pkt. 5c; oz. 15c.

Dwarf Growing—Mixed named varieties. Pkt. 5c; oz. 15c.

NICOTIANA (Flowering Tobacco)

Affinis—A. Sweet scented, Pure White. Pkt. 10c.

Sylvestris—Pure White drooping flowers. A. 4 feet. Pkt. 10c.

Sanderae—Hybrids mixed. Pkt. 10c.

GIANT PANSIES**GIANT PANSIES**

Steele's "400" Mixed—Giant in size, form, color and substance. Pkt. 25c; $\frac{1}{4}$ oz. \$2.75; oz. \$10.00.

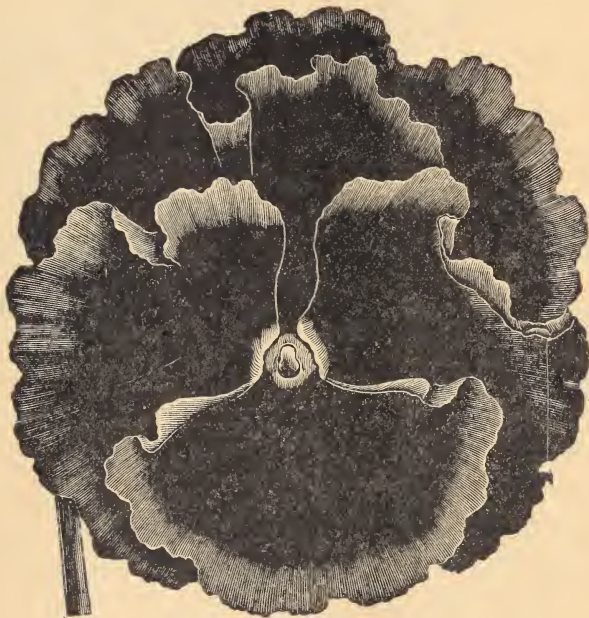
Steele's Miracle Mixed—Finest types of our strains, latest novelties. Pkt. 25c; $\frac{1}{4}$ oz. \$2.25; oz. \$8.00.

Steele's Greenhouse Special Mixed—Fine market strain. Pkt. 25c; $\frac{1}{4}$ oz. \$1.75; oz. \$6.00.

Bofferding's Super Select Mixture—Pkt. 25c; $\frac{1}{4}$ oz. \$1.75; oz. \$6.00.

Improved Swiss Giant—The flowers are flat, of immense size and the mixture is outstanding, very attractive colors, mostly large blotched. Pkt. 25c; $\frac{1}{4}$ oz. \$1.75; oz. \$6.00.

Pure Yellow, Snow White and Lord Beaconsfield—Pkt. 15c; $\frac{1}{4}$ oz. 75c; oz. \$2.50.

**PETUNIAS**

Diener's Ruffled Monsters—Mixed single. Tr. Pkt. 50c; 1,000 seeds \$1.00.

Diener's Double Frilled Mixed—Tr. Pkt. \$1.00; 1,000 seeds \$2.00.

Diener's Double Rose Pink—1,000 seeds \$2.00.

Ramona Strain Mixed—Selection from Dwarf Giants of California. Pkt. 25c; 1,000 seeds \$1.00; $\frac{1}{32}$ oz. \$4.00.

Theodosia—Large fringed Pink with light throat. Pkt. 25c; 1,000 seeds \$1.00.

Balcony—Violet Blue, Crimson, Rose, White, Balcony Mixed. Pkt. 10c; $\frac{1}{16}$ oz. 60c.

Balcony, Star of California—Velvety Violet, Pure White blotches. Pkt. 25c; 1,000 seeds 75c.

Giant Copper Red—1,000 seeds \$1.00.

Romany Lass—Finely Fringed Red. 1,000 seeds \$1.00.

Elks Pride—Pkt. 25c; 1,000 seeds 50c.

Howards Star—Pkt. 10c; $\frac{1}{4}$ oz. 60c.

Rosy Morn—Rich Pink, White throat. Pkt. 10c; $\frac{1}{4}$ oz. 75c.

Rose of Heaven—Clear Rose Pink. Pkt. 10c; $\frac{1}{4}$ oz. \$1.00.

Violacea—Dwarf Purple. Pkt. 10c; $\frac{1}{4}$ oz. 75c.

Violacea—Large flowering frilled, Velvety Violet Blue. Pkt. 25c; 1,000 seeds \$1.00.



Romona Strain Mixed

Fluffy Ruffles—Mixed colors. Pkt. 25c; 1,000 seeds 50c.
 Pride of Portland—Pink, fringed. Pkt. 25c; 1,000 seeds 50c.
 Giant Steel Blue—Pkt. 25c; 1,000 seeds \$1.00.
 Double Large Flowering—Finest mixed. Pkt. 25c; 1,000 seeds 75c.

PHLOX

Drummonds—Grandiflora, mixed. Pkt. 10c; $\frac{1}{4}$ oz. 30c.
 Drummonds—Dwarf mixed colors. Pkt. 10c; $\frac{1}{4}$ oz. 50c.

PHYSALIS (Chinese Lantern Plant)

Francheti—For winter bouquets. Pkt. 10c.
 PLATYCODON (Japanese Bell Flower)
 Mariesi—Large open bell-shaped, Violet and Blue. Pkt. 10c.

POPPIES

American Legion, Flanders Poppy—Orange Scarlet, single. Pkt. 5c; oz. 50c.
 Shirley—Large flowering mixed. Pkt. 5c; oz. 35c.
 Shirley—Single Blue Shades, Grey Blue. Pkt. 10c; oz. 75c.
 Shirley—Double Ryburgh Hybrids mixed. Pkt. 10c; oz. 60c.
 Single Annual Mixed—Pkt. 5c; oz. 25c.
 Double Annual Mixed—Pkt. 5c; oz. 25c.
 Oriental Hybrids—Mixed. Pkt. 10c; $\frac{1}{4}$ oz. 45c; oz. \$1.50.
 Oriental—Scarlet. Pkt. 10c; $\frac{1}{4}$ oz. 40c.
 Iceland—Mixed. Pkt. 10c; $\frac{1}{4}$ oz. 40c; oz. \$1.25.

Iceland—Bright Yellow. Pkt. 10c; $\frac{1}{4}$ oz. 40c.

PORTULACA (Moss Rose)

Beautiful race of dwarf plants for rock work or dry sunny locations, bearing glossy cup-shaped blossoms in brilliant colors. Annual.

Double Mixed—Saved from the finest flowers only, and will produce a large percentage of doubles. Pkt. 10c; $\frac{1}{4}$ oz. 50c.

Single Mixed—Large flowers. Pkt. 5c; $\frac{1}{4}$ oz. 25c.

PYRETHRUM—PAINTED DAISY

Hybridum, Single Mixed—Hardy perennial, bearing large Daisy-like flowers, ranging in color from White to Deep Red, with Bright Yellow centers; blooms in May and June, and again in the fall; and is one of the most graceful and long-lasting cut flowers. Pkt. 10c; $\frac{1}{4}$ oz. 50c.

Hybridum Double—Seed saved from the finest double flowers; only a small percentage can be expected to come double the first year; mixed colors; $1\frac{1}{2}$ feet. Pkt. 25c; $\frac{1}{8}$ oz. 50c.

SALPIGLOSSIS

Emperor—Mixed. Pkt. 10c; $\frac{1}{4}$ oz. 40c.

SALVIA—SCARLET SAGE

Harbinger—Early flowering Scarlet. Pkt. 10c; $\frac{1}{4}$ oz. 75c; oz. \$2.50.

Bonfire (Clara Bedman)—Pkt. 10c; $\frac{1}{4}$ oz. 50c; oz. \$1.75.



Scabiosa (Morning Bride)

SCABIOSA

Desirable, easily-grown, hardy annual. 2½ feet high; excellent cut flower. Also suitable for bedding.

Improved double large flowering.

Azure Fairy—Lavender Blue.

Crimson—Rich Crimson.

King of the Blacks—Purplish Black.

Rose—Rich Rose.

Flesh Pink.

Shasta—Pure White, enormous size.

Sulphur Yellow.

Mixed, all colors.

Pkt. 5c; ¼ oz. 15c; oz. 50c.

SHASTA DAISY

Alaska—Pure White. Pkt. 10c; ¼ oz. 60c.

Westralia—Blooms early. Pkt. 10c; ¼ oz. 75c.

SNAPDRAGON

Ceylon Court—Yellow. Tr. Pkt. \$1.00.

Cheviot Maid—Early Rose Pink. Tr. Pkt. \$1.00.

Geneva Pink—Tr. Pkt. \$1.00.

Jenny Schneider—Soft Pink. Tr. Pkt. \$1.00.

Philadelphia Pink—Standard Pink. Tr. Pkt. 50c.

Roman Gold—Deep Yellow with Copper and Pink suffusion. Tr. Pkt. \$1.00.

White Rock—Standard White. Pkt. 25c; Tr. Pkt. \$1.00.

Tall Mixed—For outdoor culture. Pkt. 10c; ¼ oz. 50c.

Semi-dwarf—Mixed, for outdoor culture. Pkt. 10c; ¼ oz. 40c.

STATICE

See Everlasting Flowers.

STOCKS

Large Flowering—10 weeks. Mixed colors. Pkt. 10c; ¼ oz. 60c.

Cut and Come Again—Mixed colors. Pkt. 10c; ¼ oz. 75c.

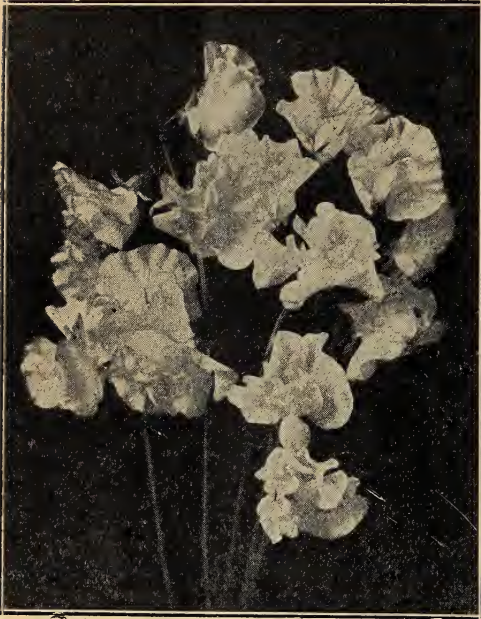
SUN FLOWERS

"True Red"—Pkt. 5c; oz. 35c.

Stella—Improved miniature, Golden Yellow with Black disc. Pkt. 5c; ¼ oz. 25c.

Double Chrysanthemum Flowered—Yellow. Pkt. 5c; oz. 40c.

SWEET PEAS



Early Flowering Spencer

SPENCER SUMMER FLOWERING

Austin Frederick—Giant flowered Lavender.

Avalanche—Glistening White.

Dora—Rosy Cerise, Cream Wings.

Elfreda Pearson—Pale Pink.

Gleneagles—Very large Lavender.

Hawmark Pink—Deep Rose Pink.

Hawmark Salmon Pink.

Hawmark Scarlet.

Hercules—Rosy Pink.

Huntsman—Bright Scarlet.

Illuminator—Salmon Orange.

Royal Purple—Rich Purple.

Royal Scott—Orange Scarlet.

Warrior—Maroon.

Wedgewood—Azure Blue.

Wemby—Lavender suffused Plumbago Blue.

Extra Choice Mixed.

All of the above—Pkt. 10c; oz. 20c; $\frac{1}{4}$ lb. 60c; lb. \$2.00.

EARLY FLOWERING SPENCER

Balls Blue—Pkt. 15c; oz. 50c; $\frac{1}{4}$ lb. \$1.50.

Balls Rose—Light Rose. Pkt. 15c; oz. 50c; $\frac{1}{4}$ lb. \$1.75.

Blue Bird—Standard Blue. Pkt. 15c; oz. 50c; $\frac{1}{4}$ lb. \$1.75.

Burpees Orange—Light Shade. Pkt. 15c; oz. 50c; $\frac{1}{4}$ lb. \$1.75.

Columbia—Rose Pink and Creamy White. Oz. 50c; $\frac{1}{4}$ lb. \$1.50.

Glitters—Orange Scarlet. Oz. 50c; $\frac{1}{4}$ lb. \$1.50.

Grenadier—Poppy Scarlet. Oz. 50c; $\frac{1}{4}$ lb. \$1.75.

Harmony—Best Lavender. Oz. 50c; $\frac{1}{4}$ lb. \$1.50.

Jeanne Mamitch—Long stemmed Rose Pink. Oz. 50c; $\frac{1}{4}$ lb. \$1.75.

Mrs. Kerr—True Salmon. Oz. 50c.

Snowstorm—Improved White. Oz. 45c; $\frac{1}{4}$ lb. \$1.50.

Spring Song—Salmon Rose. Oz. 60c; $\frac{1}{4}$ lb. \$1.75.

Valencia—Bright Orange. Oz. \$1.00.

White Harmony—Standard White. Oz. 75c; $\frac{1}{4}$ lb. \$2.50.

Yarrowa—Bright Rose Pink. Oz. 40c; $\frac{1}{4}$ lb. \$1.50.

Zvolaneks Rose—Rose Pink. Oz 50c; $\frac{1}{4}$ lb. \$1.50.

Choice Mixed—From above named varieties. Pkt. 15c; oz. 40c; $\frac{1}{4}$ lb. \$1.50.

SWEET WILLIAM

Pink Beauty—Single. Pkt. 10c.

Blood Red—Pkt. 10c.

All Colors—Mixed. Pkt. 10c; $\frac{1}{4}$ oz. 30c.

TRITOMA (Red Hot Poker)

New Hybrids—Pkt. 15c; $\frac{1}{4}$ oz. 35c.

VERBENA

Grandiflora Hybrids—Robust, compact, large and free flowering. New. Pkt. 10c; $\frac{1}{4}$ oz. 50c; oz. \$1.75.

Luminosa—Luminous Flame Pink shading to Salmon. Pkt. 10c; $\frac{1}{4}$ oz. 50c.

VIOLA CORNUTA

Apricot—Apricot Yellow tinged with Orange. Pkt. 25c; $\frac{1}{8}$ oz. \$1.50.

Jersey Gem—Deep Violet Blue. Pkt. 25c; $\frac{1}{8}$ oz. \$2.00.

Mixed—All colors. Pkt. 10c; $\frac{1}{8}$ oz. 35c.

ZINNIAS



**GIANT DOUBLE DAHLIA
FLOWERED**

Buttercup—An immense deep Canary Yellow.

Crimson Monarch—Largest and best of the Red shades.

Dream—A fine Deep Lavender, turning to Purple.

Exquisite—Color, Light Rose with center a deep Rose.

Giant Attraction—A distinct shade of Brick Red.

Golden State—A very rich Orange Yellow.

Old Rose—Real Old Rose shade.

Purple Prince—Fine Deep Purple.

Scarlet Flame—Large beautiful Bright Scarlet.

Violet.

Pkt. 15c; $\frac{1}{4}$ oz. 50c; oz. \$1.50.

Choicest Mixed Colors—Pkt. 10c; oz. \$1.25.

ZINNIA ELEGANS "LILLIPUT"

Scarlet Gem—Bright Red.

Salmon Rose—Improved type, for border and bedding.

Choicest Mixed Colors.

Pkt. 10c; oz. 75c; $\frac{1}{4}$ lb. \$2.50.

CALIFORNIA GIANTS OR ROBUSTA

Enchantress—Light Rose, deep center.

Miss Wilmott—Soft Pink.

Rose Queen—Striking Bright Rose.

Orange Queen—Golden Yellow.

Orange King—Burnt Orange.

Cerise Queen.

Scarlet Gem—Glowing Scarlet.

Purity—Beautiful White.

Purple.

Choicest Mixed Colors.

Price—Pkt. 10c; $\frac{1}{4}$ oz. 30c; oz. \$1.00.



SEED DISINFECTANTS

SEMESAN

Semesan can be applied in either dry or liquid form to prevent or control effectively a most diversified variety of disease borne by seeds, seed-pieces, plants, and soils. 2 oz. 50c; 1b. \$2.75; 5 lbs. \$13.00; 25 lbs. \$56.25; 100 lbs. \$220, not mailable.

SEMESAN BEL—New Improved

An excellent dust or water-mixture disinfectant for controlling diseases and increasing yields of seed potatoes and other tubers. 4 oz. 50c; 1b. \$1.75; 5 lbs. \$8.00; 25 lbs. \$31.25. not mailable.

SEMESAN JR.

Semesan Jr. provides an unusually effective but inexpensive dust treatment for the prevention and control of field and sweet corn seed diseases. 4 oz. 50c; 1b. \$1.75; 5 lbs. \$8.00; 25 lbs. \$31.25, not mailable.

CERESAN

Effectively controls smut diseases of wheat, barley, and oats. Used on seed grain before sowing; requires only 2 to 3 ounces to the bushel. Lb. 75c; 5 lbs. \$3.00; 25 lbs. \$12.50, not mailable.

RUBBER BANDS

All sizes for bunching, pure rubber, best quality. Lb. 75c; 5 lbs. \$3.25, postpaid. Write for prices if larger quantities are wanted.

STIM-U-PLANT

The Magic Fertilizer In Tablet Form
GLORIOUS GARDENS
PERFECT HOUSE PLANTS

STIM-U-PLANT is the most complete plant food in tablet form. Guaranteed analysis 11 per cent Nitrogen, 12 per cent Phosphoric Acid, 15 per cent Potash—all of which elements are water-soluble and immediately available to the feeding root-hairs of the plant.

EASY TO USE

Simply insert tablets in soil about 3 inches from stem of plant, or dissolve in water at the rate of four tablets to the gallon and apply as liquid manure. Complete directions with every package.

Order **STIM-U-PLANT** tablets with your seed and plant order. Price: 30 tablets 25c; 100 tablets 75c; 1,000 tablets \$3.50.

FIELD SEEDS AND SEED GRAINS

LATEST PRICE LIST SENT ON REQUEST. At the time this catalog goes to press it is impossible to fix prices as market changes. Always glad to send samples and quote firm prices on your requirements.

Our Policy—Long experience has shown that it is necessary to have only one quality of seed. There are many varieties. Our policy is to stock only the best varieties and qualities. This simplifies the business and enables us to make close prices. The price for the same quality and quantity, at the same time, is alike to all. **Value is what we give.** Lowest price consistent with our standard quality. Confidence is the basis of all business and a satisfied customer is our best asset.

All quotations are for **BOFFERDING STANDARD QUALITY.** Judge us by the goods we sell.

Germāco Hotkaps

New Method of
Plant Protection



GERMACO HOTKAPS can make you extra dollars this season. They protect plants from frost, wind, rain, insects and ground crusting. Thus they produce hardier, quicker crops. You get higher prices!

Thousands were used in 48 states last year. They cost so little that growers cannot afford to be without them.

Prices: 1,000 lots, \$11.50; 5,000 lots, \$11.00 per M; 10,000 lots, \$10.75 per M; 250 Trial Package, including Garden Setter with Tamper, \$4.00; 100 Home Package, including Garden Setter with Tamper, \$2.50; Germaco Hotkap Steel Setter with Tamper, \$2.50; postage, extra.

Weights: 1,000 package HOTKAPS, 26 lbs.; 250 package, 9 lbs.; 100 package, 5 lbs.; Steel Hotkap Setter, 3 lbs.



PLANET JR.



WHEEL HOES, CULTIVATORS AND SEEDERS

Planet Jr. tools save time, lighten labor and get bigger, better crops at less cost. Designed by a practical farmer and manufacturer with 40 years experience. Lasts a life time. Fully guaranteed. 72 Page Planet Jr. Catalog Free. Send for copy today.

No. 4 Planet Jr.—Combined Hill and Drill Seeder, Wheel Hoe Cultivator and Plow.

Price, complete \$18.00.



No. 4 Planet Jr.

No. 4D—As a seeder only. \$14.25.

Planet Jr. No. 26—Drill Seeder. High wheels. "A new drill seeder for all soils." Just right for muck land. Price \$20.00.

No. 300. Planet Jr. Drill Seeder—New style plate seeder. Price \$20.00.

Iron King No. 4—Steel frame seeder, equipped with Regular and Special onion plate, removable seed hopper. Specially recommended for sowing onion seed. Price \$13.50.

No. 12 Planet Jr.—Double and Single Wheel Hoe. Combined price \$10.75.

No. 13 Planet Jr.—Double and Single Wheel Hoe. Price \$8.00.

No. 17 Planet Jr.—Single Wheel Hoe. Equipment: 1 pr. 6 inch hoes, 3 cultivator teeth, 1 large garden plow, double wheel arms. Price \$7.75.

No. 18 Planet Jr.—Single Wheel Hoe. Equipment: 1 pr. 6 inch hoes, 3 steel cultivator teeth, double wheel arms. Price \$5.75.

PRICES SUBJECT TO CHANGE WITHOUT NOTICE

INSECTICIDES AND FUNGICIDES



Ever Green—A non-poisonous insecticide, destroys a great number of both chewing and sucking insects without danger of burning the plants. 1 oz. bottle 35c; 6 oz. bottle \$1.00; pint \$2.00; quart \$3.50; gallon \$11.50.

Acme All Around Spray—Containing Nicotine Sulphate 40 per cent, Arsenate of Lead and Bordeaux Mixture. For the control of fungus diseases, chewing and sucking insects. $\frac{1}{4}$ lb. 35c; 1 lb. 75c.

Acme Arsenate of Lead—It kills the bugs, sticks to the leaves and does not burn or injure the foliage. Lb. 30c; 4 lb. bag 75c.

Acme Bordeaux Mixture—Powder. Can be used dry or as a spray. For spray use 6 to 7 lbs. to 50 gallons of water. Lb. 35c; 4 lbs. 75c.

Acme Calcium Arsenate—Used dry or spray, the cheapest arsenical insecticide. Lb. 20c; 4 lbs. 60c.

Acme Dusting Sulphur—For mildew, black spot on roses, and other plant diseases. 3 lbs. 35c.

Acme Garden Guard—Dust on plants from sifter top carton or through burlap sack. The strongest garden insecticide of its type on the market—yet safe to use. Ideal for the kitchen garden. Lb. sifter carton 25c; 5 lb. bag 65c.

Acme Lime Sulphur—Acme Lime Sulphur is a standard 330 Baume Lime and sulphur solution, converted into dry powder form, having all the effectiveness without the bother in handling. 1 lb. cartons 35c; 5 lb. cartons \$1.50; 10 lbs. \$2.75.

Acme Paris Green—Always uniform, fluffy, and free running, insuring maximum results. Write for prices.

Acme Spray Soap "Fish Oil"—To protect trees and shrubs from parasitic sucking insects. Lb. 30c; 5 lb. cartons \$1.25.

Black Leaf "40"—A liquid insecticide, kills Aphis on peas, radish and other plants. For all sucking insects. 1 oz. 35c; 5 oz. \$1.00; lb. \$2.50; 2 lbs. \$3.75; 5 lbs. \$7.00; 10 lbs. \$11.85.

Nico Fume Liquid—Free nicotine liquid. 1 lb. \$2.00; 4 lbs. \$5.85; 8 lbs. \$10.85.

Nico Fume Powder—Powder for greenhouse fumigation. 5 lbs. \$3.50; 10 lbs. \$6.15.

Cyanogas "G"—Fumigant. The most effective greenhouse fumigation material for killing Mealy Bug, Aphis, White Fly, Soft Scale, Thrips and Greenhouse Leaf Tyer. Price 5 lb. tins, \$3.00; 25 lbs. \$10.00.

Kolodust—An improved fungicide that sticks. Strictly a fungicide; to be used in the prevention of outbreaks of Lettuce Blight in greenhouses, Apple Scab, Brown Rot and many other fungus diseases by the Dusting method. Lb. 25c; 10 lbs. \$1.50.

Ask for prices in larger quantities.

Notice—Ever Green and Kolodust go by mail; all other items above not mailable.

DICKINSON'S "Dry" Form HUMUS INOCULATION

Legume Inoculator—It is put on dry; no messing with water. Every can contains more than enough culture material to fully inoculate the quantity of seed for which it is intended, and full directions are printed on the label.

1 Bushel Size—Alfalfa and Sweet Clover.....	60c	$\frac{1}{2}$ Bu. \$0.30
1 Bushel Size—Soy Beans	30c	5 Bu. 1.00
1 Bushel Size—Vetches, Field and Garden Peas, Sweet Peas	30c	5 Bu. 1.00
1 Bushel Size—Field and Garden Beans.....	30c	5 Bu. 1.00
Garden Size—Peas and Sweet Peas, Garden Beans and Limas.....	25c	

DARLING'S SPECIAL LAWN AND GARDEN FERTILIZER



PRICES

100 lb. Bags... \$4.00
 50 lb. Bags... 2.25
 25 lb. Bags... 1.25

For rich green velvety lawns, beautiful flowers, luxurious shrubs and early succulent vegetables use a perfectly balanced, concentrated plant food. These classes of plants need large amounts of nitrogen (Ammonia) and Potash. Nitrogen gives the rich color in stems and leaves together with vigorous growth, while the Potash helps develop the roots and stalks and makes the plants more resistant to diseases.

Darling's Special Lawn and Garden Fertilizer has no offensive odor, is easy to apply and results are quickly noticed. A hundred pound bag contains as much food as a whole wagon load of stable manure. Its continued systematic use will materially aid in eradicating weeds from lawns.

Complete instructions for application are given with each bag.

ATLACIDE NON-POISONOUS WEED KILLER PATENTED DUSTER

Atla cide Non Poisonous Weed Killer Duster exterminates all undesirable vegetation including Poison Ivy, Canada Thistle, Johnson Grass, etc., Without danger of poisoning humans or animals. Simply shake powder from can on the weeds and grasses

to be killed. Especially recommended for obtaining weed-free driveways, paths, tennis courts and gutters.

- | | |
|---|-------------|
| 1-lb. DUSTER | 50c Each |
| (kills 100 sq. feet of weeds) | |
| 3½-lb. DUSTER | \$1.50 Each |
| (kills 350 sq. feet of weeds) | |
| Bulk sizes for refilling duster or for making solution | |
| 50-lb. Drum | 20c lb. |
| (kills 5,000 sq. feet of weeds) | |
| 100-lb. Drum | 19c lb. |
| (kills 10,000 sq. feet weeds) | |
| 200-lb. Drum | 18c lb. |
| (kills 20,000 sq. feet weeds) | |

Every Home Needs This New Gardening Aid!



Little Vigoro Spreader

Spreads Vigoro and seed evenly and accurately. Saves time and labor. Ideal for sowing on windy days. Designed for use on established lawns. Can be used on newly prepared soils if well firmed. Costs no more than a good garden spade. Sturdily constructed. Weight 6 lbs. Has 14-inch spread.

\$1.95 plus postage.

For Large Areas Use One of the Larger Vigoro Spreaders

A size for every need. Will soon pay for itself in saving of time and labor.

Easy running, sturdy machines with a patented force-feed principle. Spreads Vigoro, seed, salt, sand, and insecticides uniformly at any desired rate.

Equipped with handle controlled shut-off. Equally efficient on established lawns or soft ground. Made in three sizes: Junior, 14-inch spread, 35-lb. capacity, \$5.95; Standard, 24-inch spread, 65-lb. capacity, \$10.00; Special, 36-inch spread 100-lb. capacity, \$16.00. ALL PRICES F. O. B., MINNEAPOLIS.

LARKSPUR



Our double flowering varieties, with their long spikes are excellent for cut flowers. They should be planted in beds, as a background for other small plants. They are easily grown and we know of nothing that will produce a greater show.

It requires 15 to 20 days for the seed to germinate and the seed bed must be kept moist. Annual.

Exquisite Rose—Rose Pink. Pkt. 15c; $\frac{1}{4}$ oz. 40c; oz. \$1.25.

La France—Brilliant Rose on Salmon. Pkt. 15c; $\frac{1}{4}$ oz. 35c; oz. \$1.00.

Exquisite Pink Improved—Pkt. 15c; $\frac{1}{4}$ oz. 40c; oz. \$1.25.

Blue Spire—Intense Deep Oxford Blue. Pkt. 25c; $\frac{1}{4}$ oz. 60c; oz. \$2.00.

White Spire—Pkt. 25c; $\frac{1}{4}$ oz. 60c; oz. \$2.00.

Imperial Mixed Larkspur—Pkt. 10c; $\frac{1}{4}$ oz. 35c; oz. \$1.25.

Lilac—Tall Double Stock Flowered. Pkt. 5c; $\frac{1}{4}$ oz. 25c; oz. 80c.

Dark Blue—Pkt. 5c; $\frac{1}{4}$ oz. 25c; oz. 80c.