

Handwritten text in Malayalam script, likely a manuscript or record. The text is dense and covers most of the page. It includes various names, dates, and possibly administrative or legal entries. Some words are written in a larger, bolder script, possibly indicating titles or important terms. The handwriting is somewhat cursive and difficult to decipher in many places due to the age and style of the script.



044

Mal 794

1













Handwritten text in Malayalam script, organized into columns and sections. The text includes various entries, possibly names or titles, with associated numbers and dates. Some entries are written in a larger, bolder script, while others are smaller. There are also some marginal notes and a small circular stamp on the right side of the page.

Handwritten circular stamp or mark, possibly a signature or official seal, located on the right side of the page.





145  
146  
147  
148  
149  
150  
151  
152  
153  
154  
155  
156  
157  
158  
159  
160  
161  
162  
163  
164  
165  
166  
167  
168  
169  
170  
171  
172  
173  
174  
175  
176  
177  
178  
179  
180  
181  
182  
183  
184  
185  
186  
187  
188  
189  
190  
191  
192  
193  
194  
195  
196  
197  
198  
199  
200

201  
202  
203  
204  
205  
206  
207  
208  
209  
210  
211  
212  
213  
214  
215  
216  
217  
218  
219  
220  
221  
222  
223  
224  
225  
226  
227  
228  
229  
230  
231  
232  
233  
234  
235  
236  
237  
238  
239  
240  
241  
242  
243  
244  
245  
246  
247  
248  
249  
250  
251  
252  
253  
254  
255  
256  
257  
258  
259  
260  
261  
262  
263  
264  
265  
266  
267  
268  
269  
270  
271  
272  
273  
274  
275  
276  
277  
278  
279  
280  
281  
282  
283  
284  
285  
286  
287  
288  
289  
290  
291  
292  
293  
294  
295  
296  
297  
298  
299  
300





640... 13

Handwritten text in Malayalam script, including a list of names and titles such as '... (A.D. 13) ...' and '... (A.D. 14) ...'.

Handwritten text in Malayalam script, including a list of names and titles such as '... (A.D. 15) ...' and '... (A.D. 16) ...'.















Handwritten text in Malayalam script, starting with 'നാമകരണ...' and containing various annotations and numbers.

Handwritten text in Malayalam script, continuing the list of entries with numbers and descriptions.

Handwritten text in Malayalam script, including entries with numbers and specific terms.

Handwritten text in Malayalam script at the bottom of the page, including a page number '500' and further entries.





Handwritten marginal notes on the left side of the page, including the name 'പാലക്കാട്'.

Main handwritten text in Malayalam script, containing numbered entries and various annotations. The text is densely packed and includes several lines of prose.

Handwritten marginal notes on the left side, including the number '529.2' and some illegible text.

Main handwritten text in Malayalam script, continuing the entries from the previous section.

Handwritten marginal notes on the left side, including the number '529.1' and some illegible text.

Main handwritten text in Malayalam script, concluding the entries on the page.











J. G. MILLER

1840

27

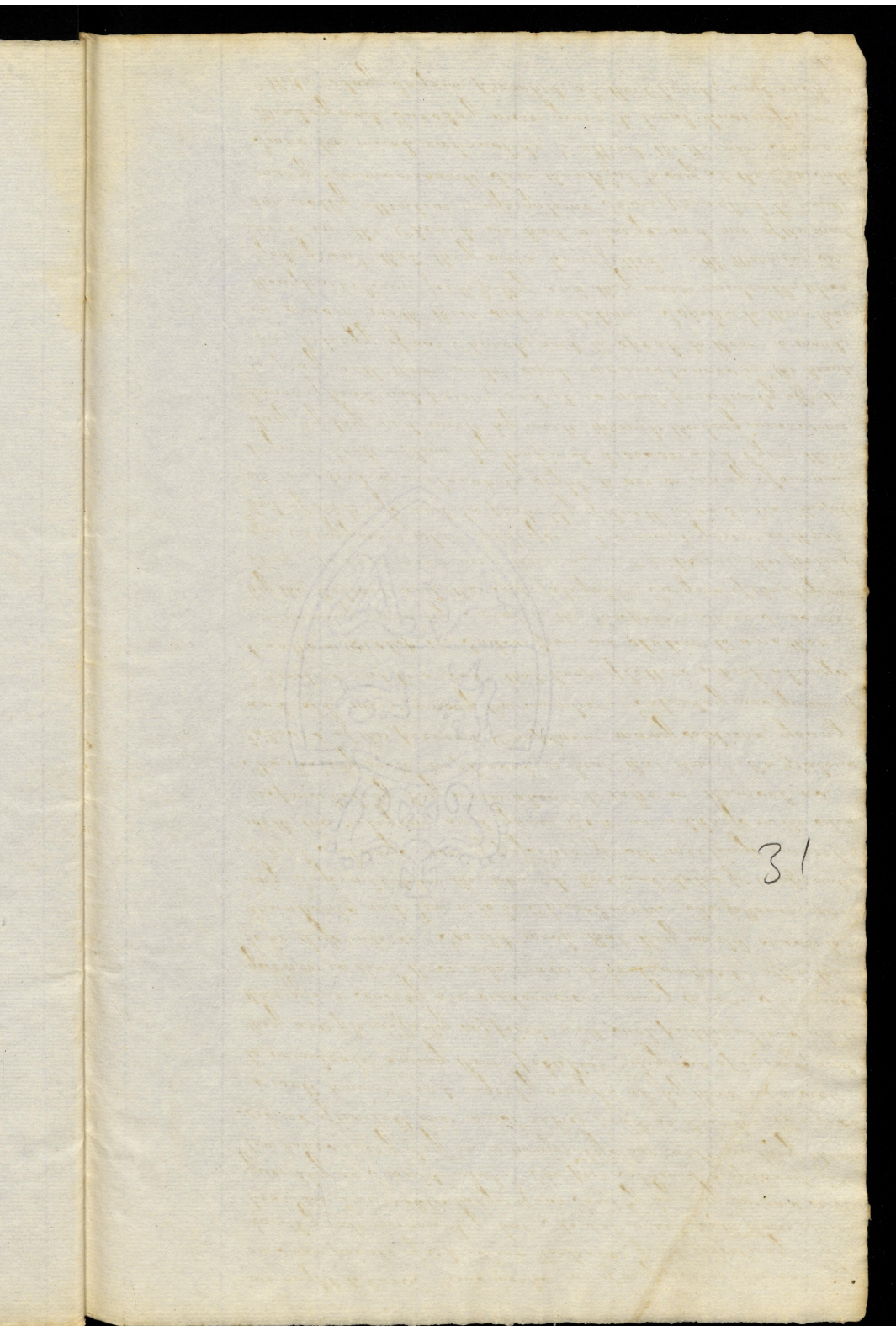
J. G. GENTRIS

1840

29

*[Faint, illegible handwriting in cursive script, likely bleed-through from the reverse side of the page.]*

*[Faint, illegible handwriting, possibly a signature or name.]*

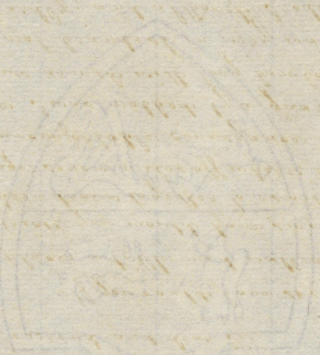


31

*[Faint, illegible handwritten text in a cursive script, likely a historical document or manuscript.]*

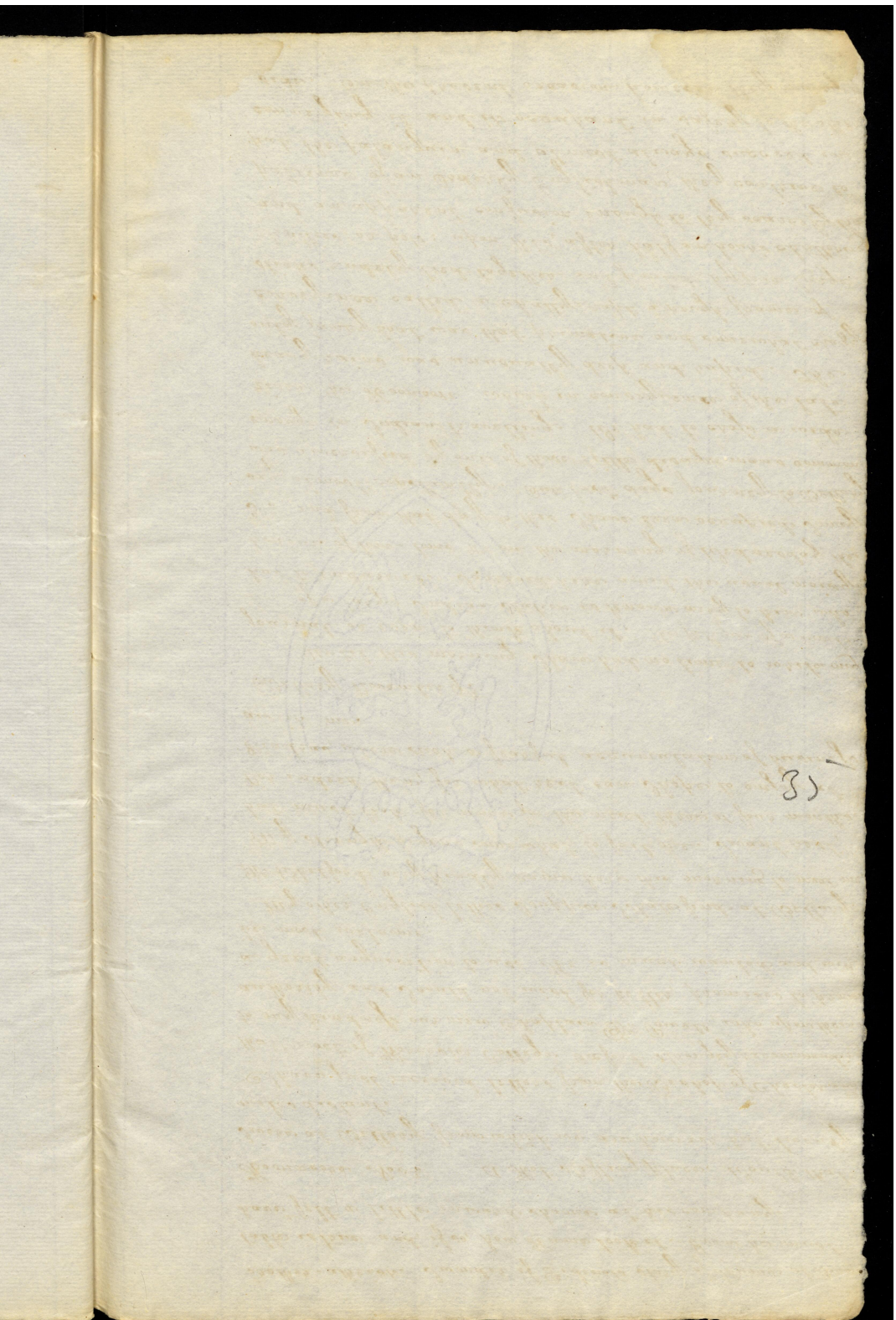


*[Faint, illegible handwriting in a cursive script, likely a historical document or manuscript.]*



33

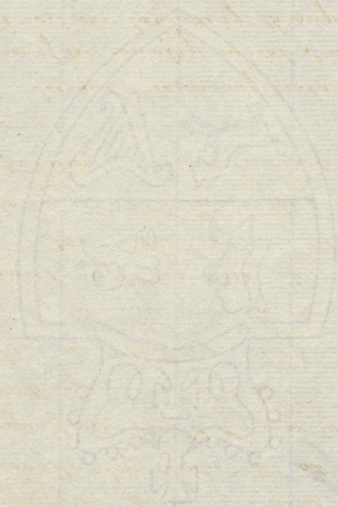
*[Faint, illegible handwritten text in a cursive script, likely a historical document or manuscript.]*

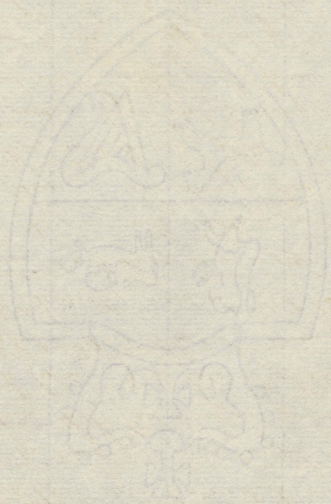


*[Faint, illegible handwritten text in a cursive script, likely a historical document or letter.]*

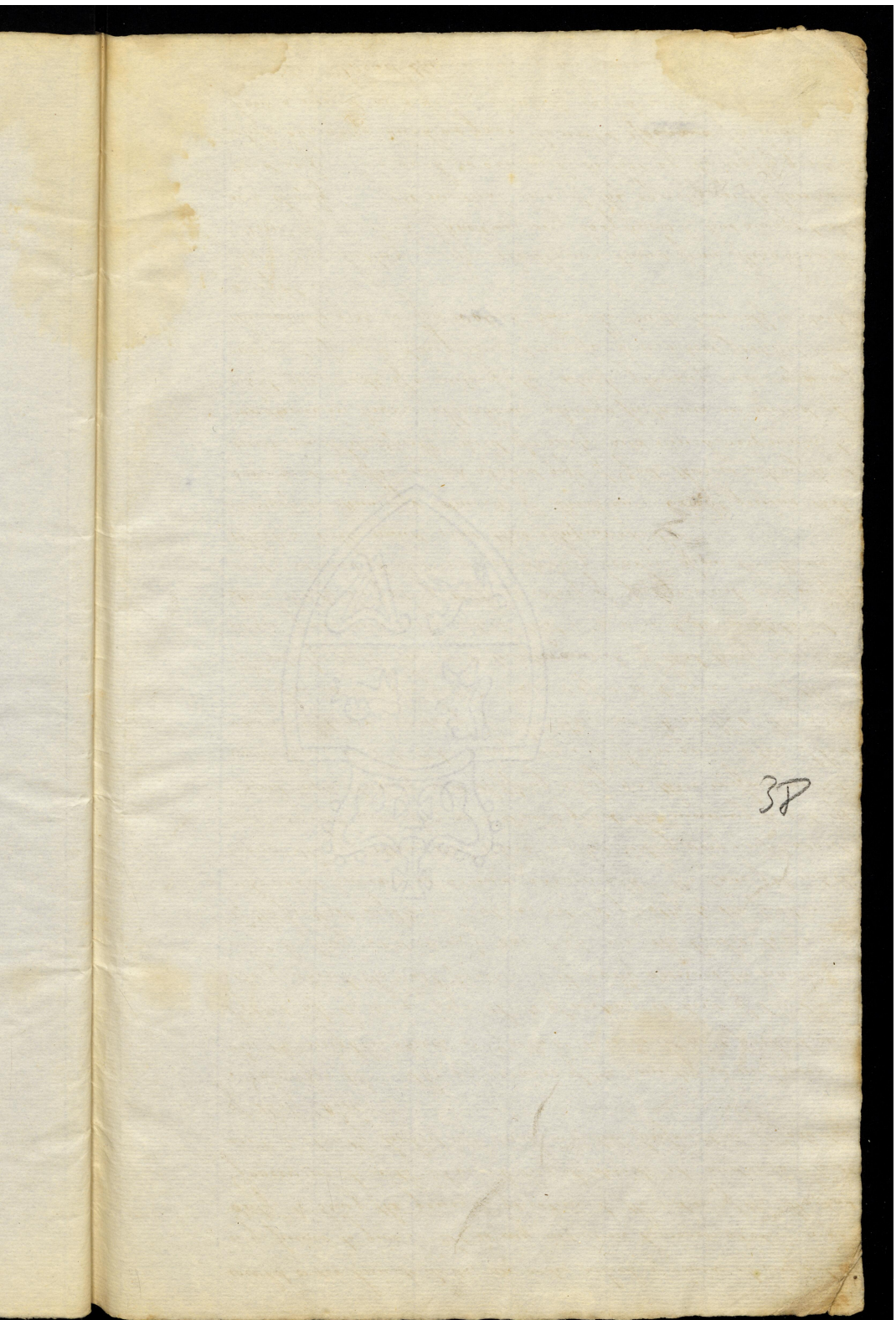
31

*[Faint, illegible handwriting in a cursive script, likely a historical document or letter.]*

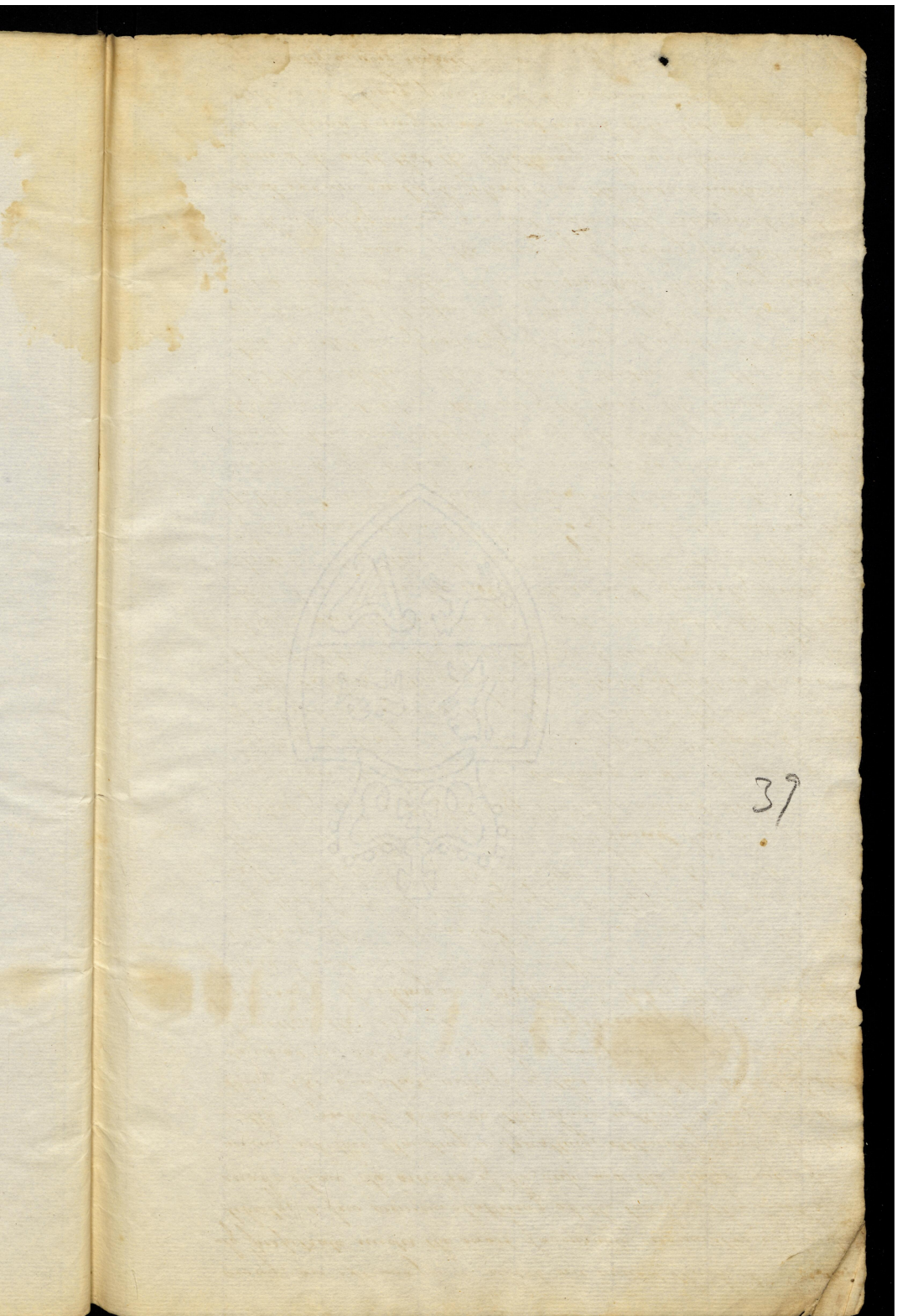




32



38



37

