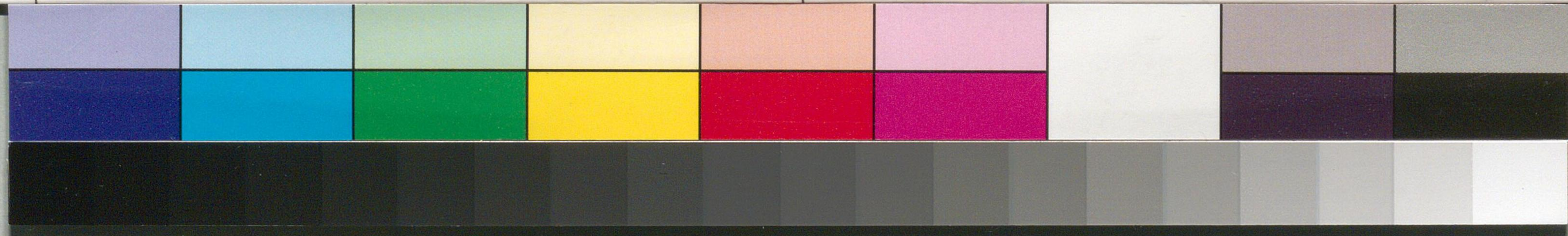
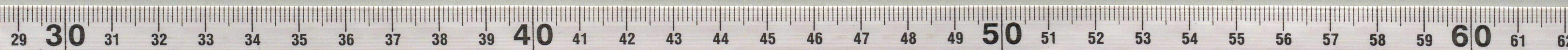


Handwritten text on a piece of aged paper, possibly a document or envelope, featuring cursive Japanese calligraphy. The text is partially obscured by a vertical crease and includes characters such as 赤松 (Akamatsu) and 則良 (Norihisa).



国立国会図書館 赤松則良関係文書 20-9

ノ

一
心
写
也

松
之

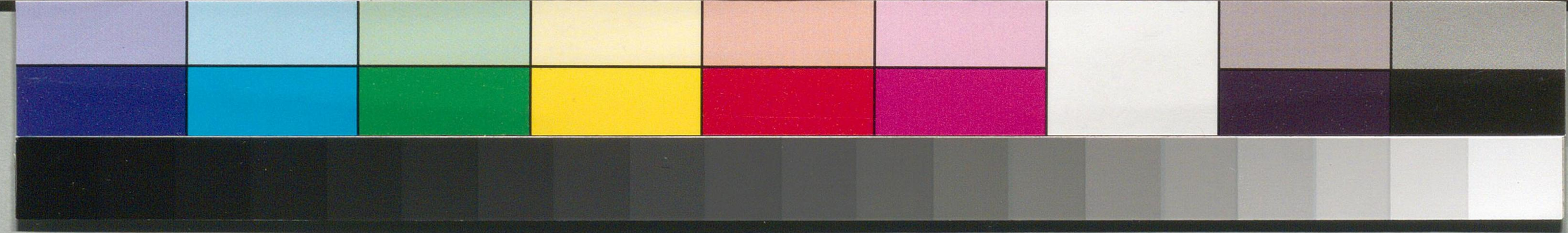
笔
角

掛
子
自

別
仕
是

筆
文
庫

筆



国立国会図書館 赤松則良関係文書 20-9