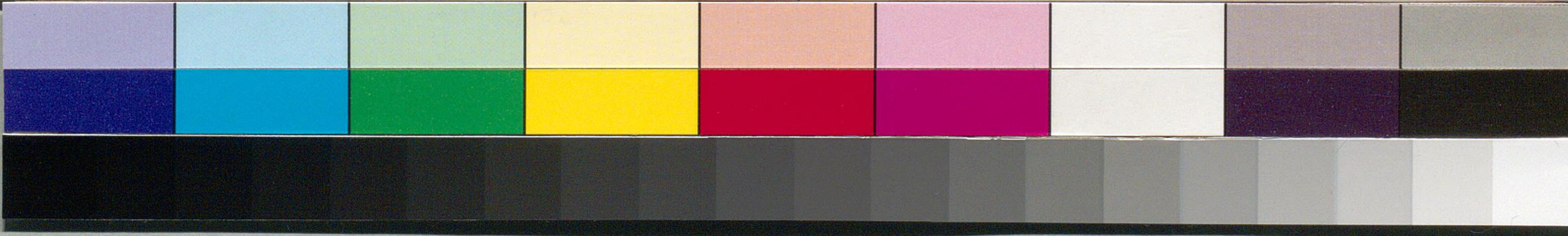
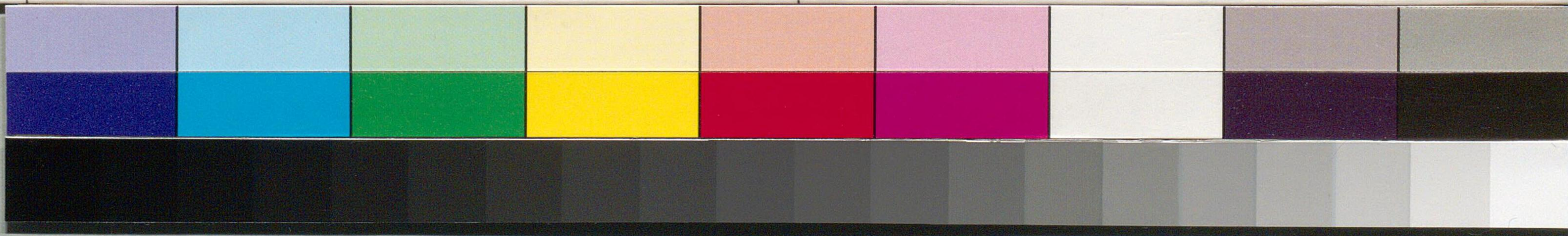
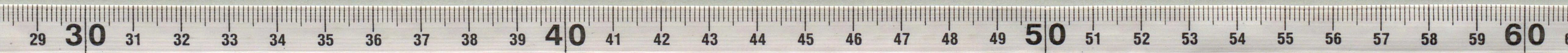
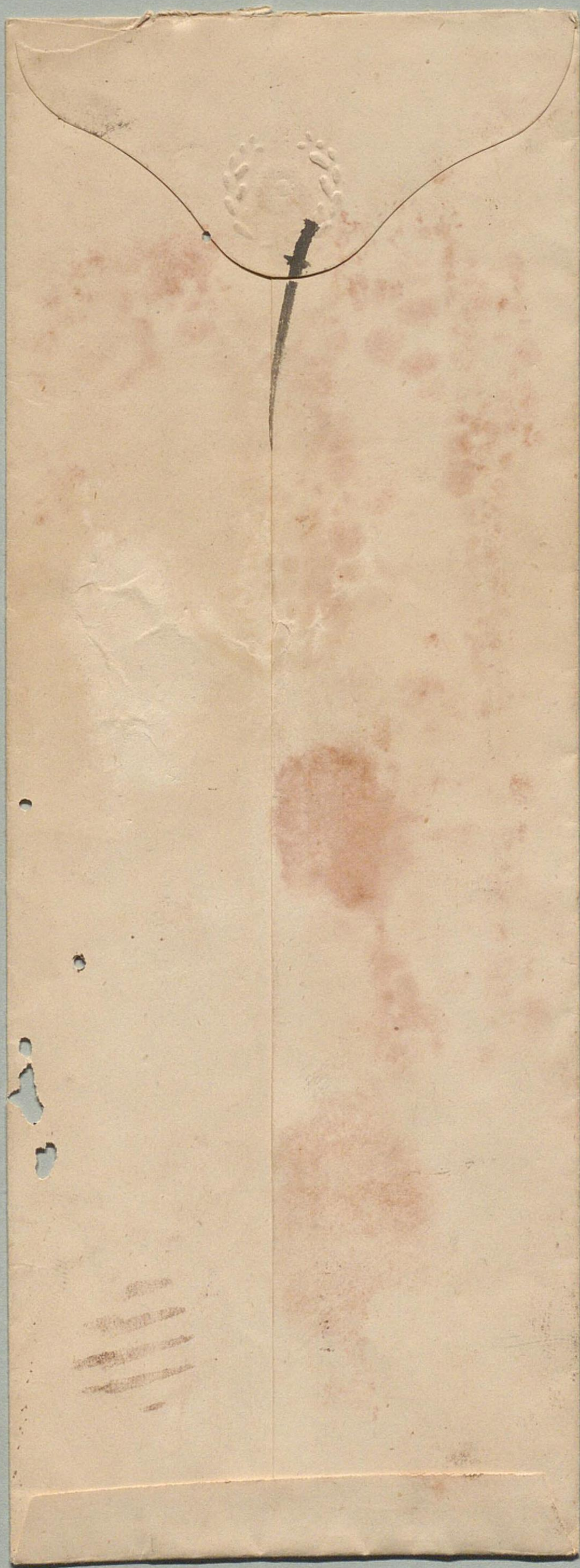


芝区白糸橋所
二十七番地
寺島宗則殿

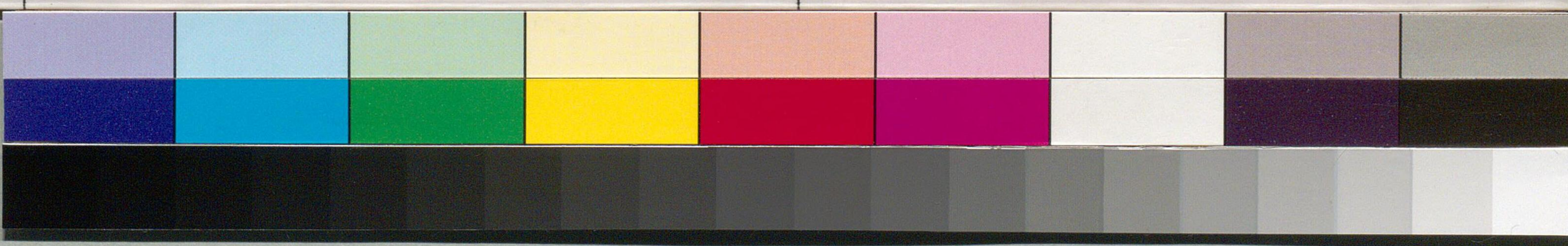
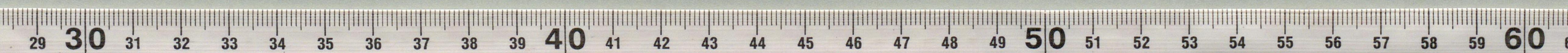
七月廿九日





国立国会図書館 寺島宗則関係文書 19

Handwritten text on a vertical strip of aged paper, likely a document or manuscript fragment. The text is written in a cursive style and is mostly illegible due to fading and a large brown stain in the center. Some faint characters are visible, including what appears to be '寺島' (Terajima) at the top and '宗則' (Munonori) further down.



五月八日 宗則 牡丹花

入 口 陽 之 友 為 春 丹 之 所

可 亦 有 之 亦 有 友 以 為 之 友

此 後 必 有 由 之 友 也

五月八日 宗則 牡丹花

梅子

寺島宗則

令夫人

宗則