

啟新洋灰有限公司



The Chee Hsin Cement Company, Limited.

Tientsin: Tangshan.

North China.



上海图书馆藏书



The Chee Ysin Cement Co. Limited

Head Office: Corner Taku and Bristow Roads, Tientsin

Factories: Tangshan and Machiakou

Telegraphic Add. "Cement" Code Used: A. B. C. 5th Edition.

Agents for the Company.

Peking	Ad. Birkhauser
Shanghai	{ Siemssen & Co.
Tsingtau	
Chinkiang... ..	
Hankow	Ching Chong
Nanking	S. K. Chu
Newchwang	{ Arnhold Karberg & Co.
Mukden	
Dalny (Dairen)	
Chefoo	China Merchants S.N.Co.



啟新洋灰有限公司

總理處

天津海大道英界

工廠

唐山馬家溝

各埠分銷

北京

白克思洋行
第一工場

鎮江上海青島

禪臣洋行

南京

朱樹圭

漢口

順記承號

牛莊

瑞記洋行

奉天
大連灣

烟台

招商局



THE CHEE HSIN CEMENT COMPANY, LIMITED, was founded in September 1906, (during 7th moon of 32nd year of Kuang Hsu), under the authorization of the Viceroy of Chihli, and duly registered in the Board of Agriculture, Industries and Commerce at Peking.

The works of the Company are situated at TANGSHAN, half way between Tientsin and Chinwangtao, on the Imperial Railways of North China. At this place the conditions for manufacturing Portland Cement are exceedingly favourable owing to the existence of all necessary rawmaterials, as Limestone, Clay and Coal. These materials exist in huge deposits. The Company has secured large areas in order to have sufficient rawmaterials for any number of years to come though the best quality only is being used.

The Plant of the Company is equipped with the most up to date machinery. It represents not only the largest but also the finest Cement-Factory on China territory and compares well with any Cement Plant in the World with regard to its modern type and method of working. The Steamengine develop about 2000 HP and Electricity is being used for driving the Machinery. The latest improvement in the treatment of Rawmaterials — the socalled “Wet-grinding-process” — has been introduced and by large rotary Kilns of the newest design (150 feet long) the burning of the Clinker is effected.

The yearly output has been gradually increased to about 600,000 barrels at present. This enormous increase demonstrates best the growing success of the works and confidence in the product.

Our storage rooms are served by numerous railway sidings. We are thus able to accept orders for full shiploads and effect them promptly.

The quality of Tangshan Portland Cement is kept at a high standard by a most careful and scientific control of the process of manufacturing by experienced Cement-Experts. It is guaranteed by scrupulous tests daily executed in our well equipped laboratory that our cement is always uniform in fineness, strength and soundness.

As an example of the excellent quality of our cement we beg to attach the following statement.



本公司於光緒三十二年七月稟奉

北洋大臣 批准成立並蒙

農工商部 奏明立案註冊工廠設在唐山即天津秦皇島運
貨口岸之間且緊靠京奉路線水陸交通均極利便附近原料
極多且距煤礦亦近本公司已購有各種土石山地極其廣濶
選擇最優之原料永遠取用不竭吾唐山實為製造洋灰天然
最合宜之地勢故得有製造洋灰最優美最豐富之資料也
全廠布置均極合法機器均極新式照此廠基寬敞建築完
備機器靈巧工作得法在中國固為首屈一指即與全球最著
名之各洋灰廠相比較亦屬毫無遜讓總汽機實力約有二千
餘匹馬力全廠機器咸以電力鼓動現又將廠內機器大加擴
充業已告竣燒煉洋灰之壟窯係最新之式計長一百五十餘
尺選配優美材料攪勻入水磨細名曰水磨新法也
現在全年造出洋灰數在六十萬桶之譜由此觀之本公司之
成效誠不問可知矣

本公司備有洋灰大棧兩旁附設鐵路岔道直接京奉路線遇
有大批及整船定購者均能隨時承交以應買客也

本公司洋灰成色達極精美之優點其所以得此效果者誠因
聘有外洋最有學問經驗之洋灰師化學師慎選原料分數酌
量配合分班監製依時考驗且有極寬敞之化驗室並英德各
種化學儀器無不俱備而化學師昕夕妥慎從事精益求精故
細率拉力及成錠後敲試之聲均無不達最優之目的化驗單
附列於後俾閱者察驗即知言之不謬也



謹將西歷一千九百十年全年逐日所提之灰樣攙合作一
全年平均化驗所得各項分數開列於後



計開

節餘 九百羅眼 千分之二
五千羅眼 千分之一百二十

凝結時 始 四點三分
終 八點

蒸試

英國法六點鐘後漲力三米勒密達

德國法灰錠浸水內二十八日後取驗最優

拉力 英國法

淨灰 七日後每方寸 五百七十五磅
二十八日後每方寸 六百六十五磅

自七日後至二十八日計增多九十磅或作百分之十六

拉力 德國法

淨灰 七日後每方生地密達 六十一克羅七
二十八日後每方生地密達 七十克羅一

七日後每方生地密達 十九克羅一

灰一沙三 二十八日後每方生地密達 二十七克羅七

三個月後每方生地密達 三十二克羅五

化學分驗 按千分計算

不能融化餘渣 千分之四

砂 養 千分之二百十九

礬 質 千分之六十九

鐵 養 千分之二十

灰 質 千分之六百四十八

鎂 養 千分之二十三

硫 質 千分之十四

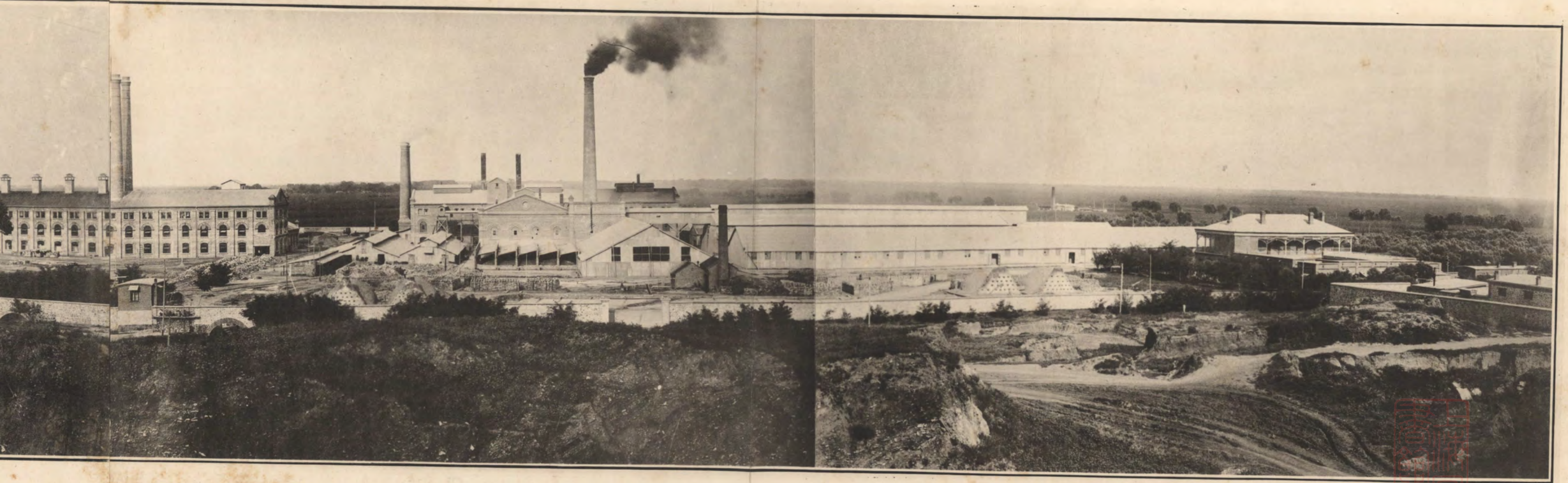
矽 質 千分之三

按以上開列驗得種種分數其細度堅力均超英德定例之上而凝結時亦未逾例限至拉力一層則英例限七日後每方寸須四百磅二十八日後五百磅為及格由七日後至二十八日應增者不能不及百分之十復查德例二十八日後灰一沙三以十六克羅為合格茲本公司灰之拉力實遠勝之其灰內所含不能融化餘渣鎂養及硫質等物均在通例所限之中數以下則本公司之灰誠為最優之品不拘何項工程足可適用也

啟新公司化學司薛樂達具

西歷一千九百一十一年三月三十號



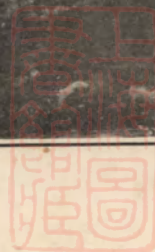


啓 新 洋 灰 有 限 公 司 工 廠 全 景



FULL VIEW OF THE CHEE HSIN CEMENT WORKS, TANGSHAN.





TANGSHAN PORTLAND CEMENT is packed in Iron Drums of 375 lbs. net and in bags of 187½ lbs. net. The best packing materials only are used in order to prevent as far as possible any loss by leaking on the Transport.

Tangshan Portland Cement is extensively used in Railway,-Harbour,-Mining,-Bridge-and other Foundation Work all over China. The Peking-Hankow, the Tientsin-Pukow and the Peking-Kalgan Railway, for instance, have used Tangshan Cement with best results. The Cement is especially fit for ironconcrete work as proved at the construction of the Hoang-Ho-River Bridge of the Tientsin-Pukow Railway, where it is preferred even to European brands on account of superior quality.

In the following we beg to add a few testimonials showing the opinion of some prominent constructing engineers and authorities on the results of Tangshan Portland Cement in practice :



洋灰分裝桶包兩種桶灰淨重三百七十五磅包灰淨重一百八十七磅半桶包材料均選精美且又結實者水陸遠運勿虞損失也

本公司洋灰為中國各省官辦商辦鐵路暨各礦廠公司並海壩各工程所信用如津浦京奉京張綏京漢汴洛潼洛同蒲川漢等路凡橋梁各要工均經施用無不合宜以造橋柱尤為合法津浦路曾用本公司洋灰打黃河橋樁查驗純美無疵故現在全購本公司洋灰不欲再用洋製也後附各鐵路及海壩工程處歷經使用洋灰證書以供眾覽



Peking, August 12, 1908.

Messrs. THE CHEE HSIN CEMENT Co., Ltd.,
TONGSHAN.

Dear Sirs,

This is to certify that the Cement you supplied us has been found excellent.

Yours truly,

(signed) Jeme Tien Yow.

Chief Engineer,

Imp. Peking-Kalgan Rly.

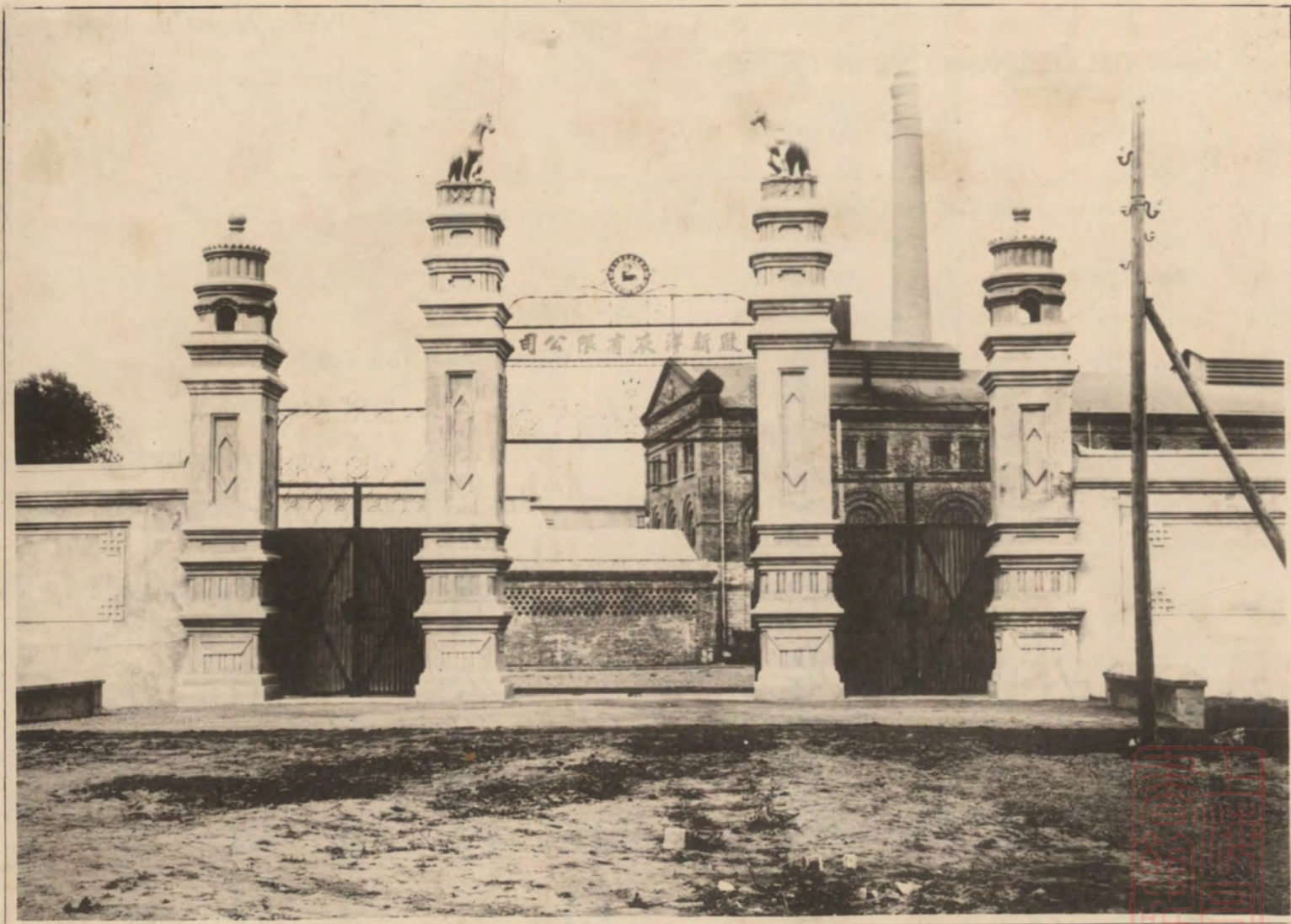
啟新洋灰公
司台電敬啟
者做處所用
貴公司洋灰
查係上品此請
台安

京張鐵路
總工程師
詹天佑具

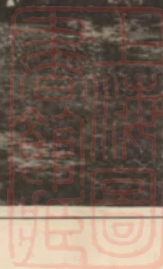
西歷一千九百零
八年八月十二號



總 廠 東 大 門 正 面



FRONT GATE OF CEMENT FACTORY.



TRANSLATION.

Peking, 27th February 1909.

CERTIFICATE.

Taotai Tsein Tsing Lien, Director of the Peking-Hankow Railway, has much pleasure in confirming here-with that he has used about 8,000 barrels of Cement from the Chee Hsin Cement Company, Limited, Tientsin, both for foundation as well as for building purposes and that the Cement has given entire satisfaction.

(signed) T. L. Tsein.

京漢鐵路公司
曾購用
啟新洋灰有限
公司洋灰八千
桶用之各種營
造工程均稱合
格此據

京漢鐵路
鄭清濂簽



西曆一千九百零

九年二月二十七號

鍋 爐 房



BOILER ROOM.



Board of Posts and Communications

Chinese Imperial Railways.

DIRECTOR-GENERAL'S OFFICE.

Peking, May 24, 1910.

THE CHEE HSIN CEMENT Co., Ltd.,

TIENTSIN.

Dear Sirs:—

Replying to your request to know what satisfaction the cement of The Chee Hsin Cement Co., Ltd. is giving I would state that under my administration as Managing Director of the Tientsin-Pukow Ry., we ordered about 20,000 tons of your cement and we have found it very satisfactory.

I remain,

Yours sincerely,

(signed) Albert C. Lee,

Technical & Mechanical Advisor

For the Board of

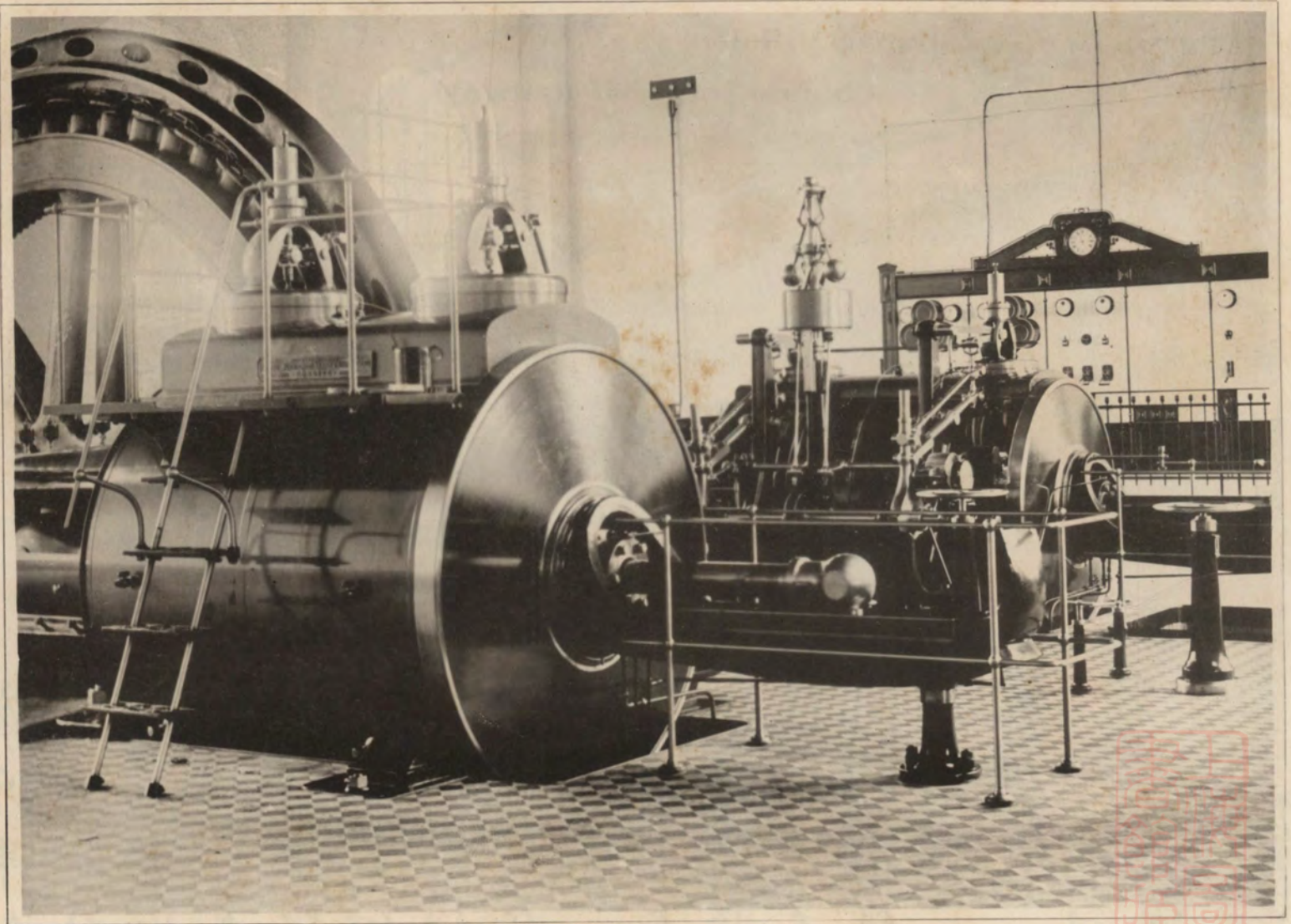
Posts and Communications.

啟新洋灰有限公司
 台鑒承詢
 貴廠洋灰
 用之工程
 成效若何
 一節溯湘
 辦津浦北段
 時曾購
 貴廠洋灰
 約二萬噸
 極稱完美
 用特奉復
 敬候
 籌祺

郵傳部顧問
 官李春湘具

西歷一千九百
 年五月廿四號

房 力 電 機 總



ENGINE ROOM.



Imperial Railways of North China.

Head office, Tientsin, 31st December 1910.

THE CHEE HSIN CEMENT Co., Ltd.

TIENTSIN.

Sirs,

I am authorized by my Directors to inform you that you are appointed Purveyors of cement to the Imperial Railways of North China.

I am, Sirs,

Your obedient servant,

(signed) H. J. W. Marshall,

Secretary.

啟新洋灰有限公司
 台鑒敬啟
 者茲奉敝總
 辦諭嗣後
 敝路需用
 洋灰專由
 貴公司供
 給此佈

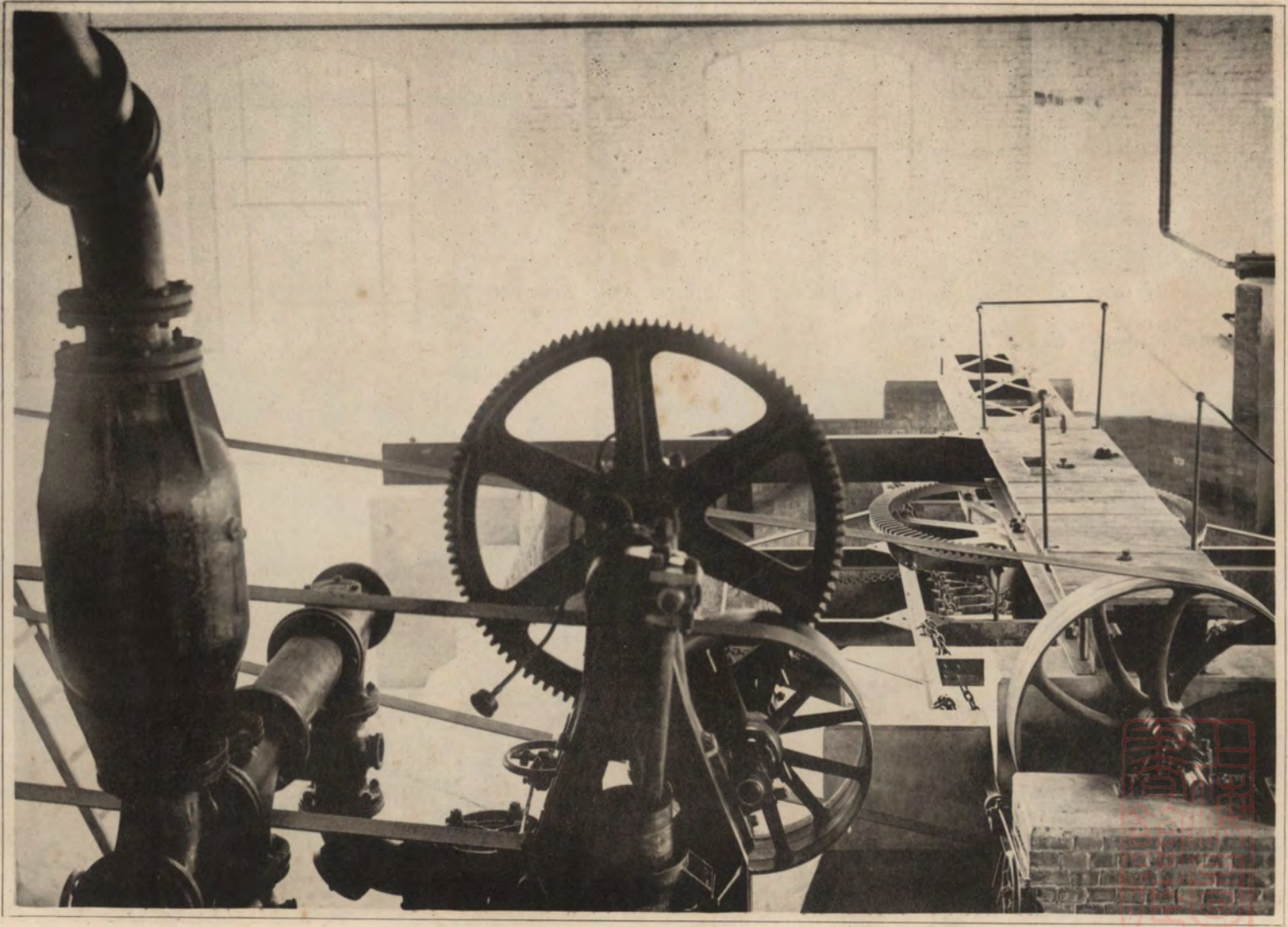
京奉鐵路總
 局洋文案具

西曆一千九

百十年十二

月三十一號

水 磨 房



MILL ROOM "WET PROCESS".

KAISERLICH CHINESISCHE TIENTSIN-PUKOW EISENBAHN
NORDSTRECKE

Tientsin, 24th May, 1911.

The Secretary,
THE CHEE HSIN CEMENT Co., Ltd.,
TIENTSIN.

Dear Sir,

In continuation of my letter of 29th December 1910 (J. No. 9825): please find hereunder a copy of a report from the Section Tsinanfu of this line with regard to the results of further test of your cement.

The report is addressed to me and reads as follows:—

“The compressive strength tests which have at my instigation been carried out by the Engineering Dept. I of the Imperial German Government in Tsingtau with Cubes of Tongshan Cement are now concluded.

I beg to report that the results of these tests show that the present supplies of Tongshan Cement fulfil in every respect all the requirements of good cement.

Consequently, the Tongshan Cement can be used to the best advantage—mixed in the same proportions as foreign cement—for the construction of viaducts and other concrete structures that have to stand heavy strain.

Tsinanfu, 27 April, 1911. Kaiserlich Chinesische Tientsin-Pukow Eisenbahn, Nordstrecke.

Bauleitung Tsinanfu.

I. V.

(signed) Lucht.”

A German copy of the above was also sent to Dr. Gunther.

Yours faithfully,

(signed) Dorpmuller.

Engineer-in-Chief.

啟新洋灰有限公司書記
台鑒西曆年五月二十九號燕
函計荷鑒入頃接濟南
府鐵路工程局工程司寄
交鄙人唐山洋灰成色
報告一分茲特照錄於左

唐山洋灰之結力現經
青島德國皇家第一段
工程局試驗完竣證明
極稱美善

近來所購之唐山洋灰
用於本路各處工程均極
合格確為高等洋灰
唐山洋灰按照配合
外國洋灰之理法用
於橋工及各項建築
工程之處十分堅硬梓
蓋工程實非淺鮮

濟南府天津浦
鐵路北段工
程司魯脫押

西一千九百十一年
四月二十七號

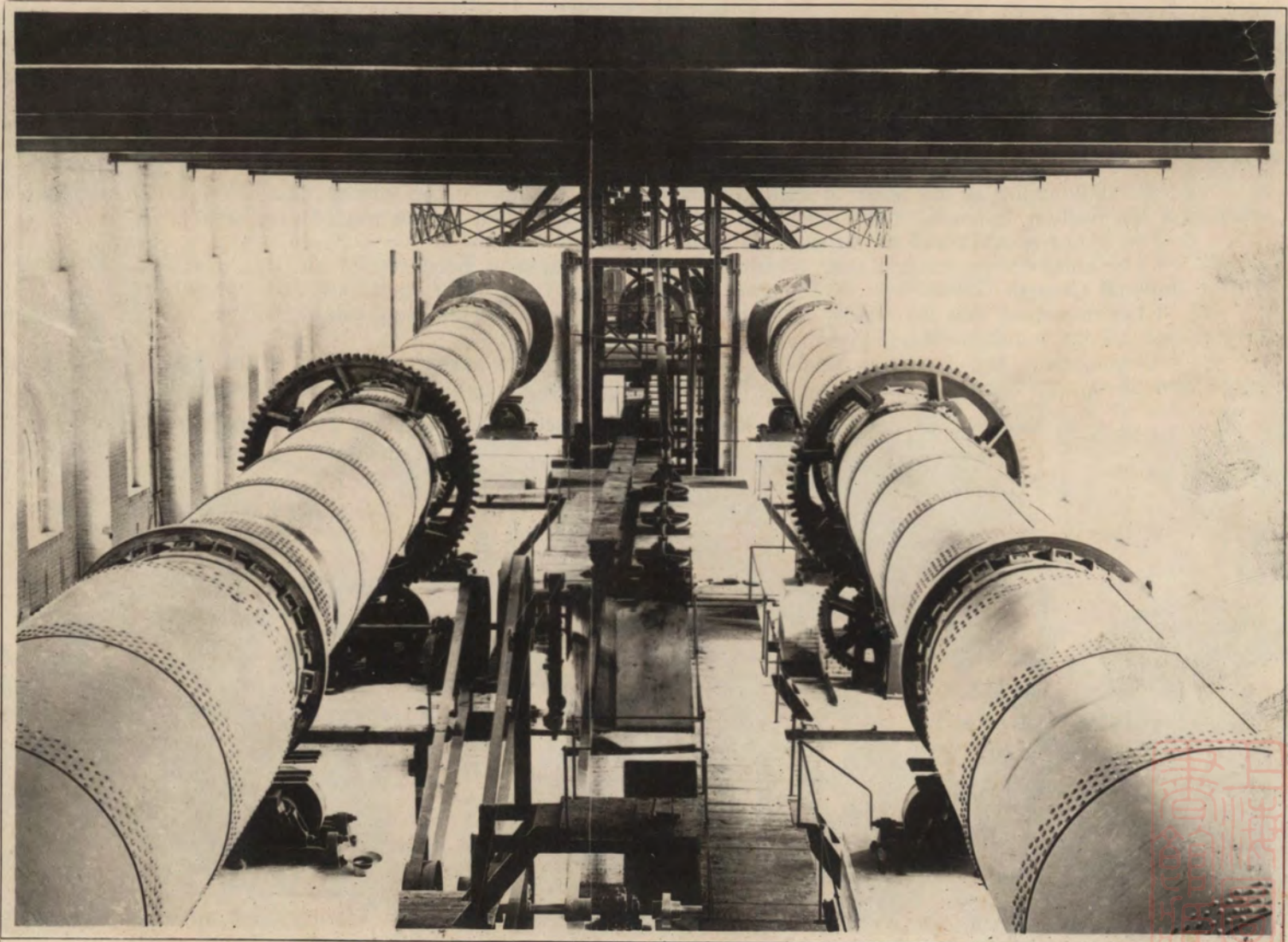
另有德文原底一分業寄
唐山交昆德君核閱矣
此敬請
台安

津浦鐵路北段
總工程司道
蒲彌勒爾具

西曆一千九百十一年
五月二十四號

窑

旋



ROTARY KILNS.

TRANSLATION.

The Imperial Chinese Tientsin Pukow Railway, Northern Section.

Journal No 317.

Tsinanfu, 3rd January, 1911.

BAURAT DORPMULLER,
ENGINEER-IN-CHIEF, TIENTSIN PUKOW RAILWAY,
TIENTSIN.

Dear Sir,

In reply to your esteemed favour of 29.12.10, I beg to inform you that we have obtained the best results with the cement supplied by The Chee Hsin Cement Co. Ltd. of Tangshan.

The Piles made of this cement (Iron-Concrete-Piles) show an extraordinary stability and strength, so that we used chiefly Tangshan Cement for the Piles. The Piles, from 15 to 17 meters long, have to stand from 1500 to 3000 strokes of a 4 $\frac{1}{2}$ tons pile-driver, which operation, I think, surpasses the severest tests.

After the experiences made with the above cement, I can only highly recommend it.

You are at liberty to make use of this judgement for any purpose you should wish.

Yours faithfully,

(signed) Borkowetz.

津浦鐵路北段濟南
工程師獲總工程師函
道滿彌勒爾君台覽啟者
接奉去年十二月二十九
號來諭敬悉敝處化驗
啟新之灰現得有至優美
之結果如做成之洋灰橋
柱驗得異常膠結堅固用
是建築橋柱皆以啟新之
灰為主此項洋灰橋柱長
由十五至十七密達下橋
時用四噸半打橋機器撞
擊一千五百至三千下而
該橋柱依然完好是則啟
新之灰成色之高實無慮
其不合格再歷經敝處試
驗則此灰無論用於何等
工程法得良果想
尊處據此情形自深為
信用也尚此奉復即請
台安

鮑克維司謹啟

西曆一千九百十
一年正月三號

原 料 絞 車



ROPE TRANSPORTATION.



(No. 120)
ENGINEER'S OFFICE.

HULUTAO HARBOUR WORKS.

LIENSHAN.

July 11th, 1911.

THE CHEE HSIN CEMENT Co.,
TIENTSIN.

Dear Sirs,

Replying to yours of 23rd June, our requirements for the rest of this year (up to the end of October) will be about 18,000 bags.

We have so far used 7,500 bags of the cement in making large concrete blocks in the sea, and culverts on the railway, also in buliding blocks for house construction. It has proved quite satisfactory in all cases.

Yours faithfully,

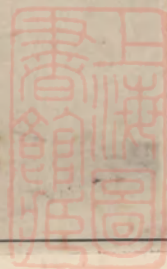
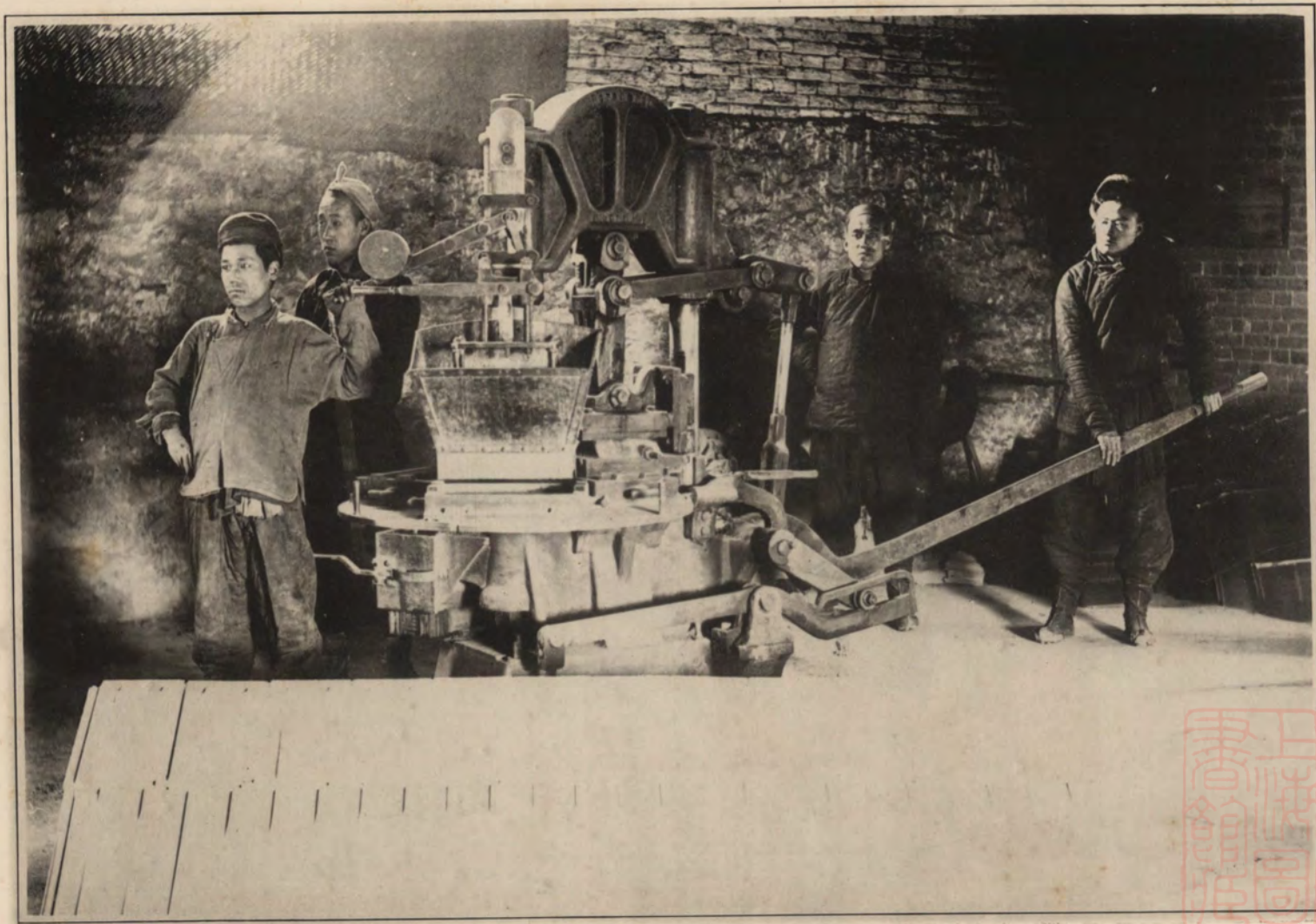
(signed) W. R. Hughes.

啟新洋灰有限
公司台照敬啟
者接讀西六月
二十三號
來書備悉種切
茲查敝工程本
年至西十月底止尚需
洋灰一萬八千包
之譜敝工程計已
購到洋灰七千五
百包用於海底與
橋工以及建築各
項工程均極合格
尚此布復敬頌
大安

葫蘆島工程
處赫士具

西曆一千九百十一
年七月十一號

洋 灰 房 瓦 機 器



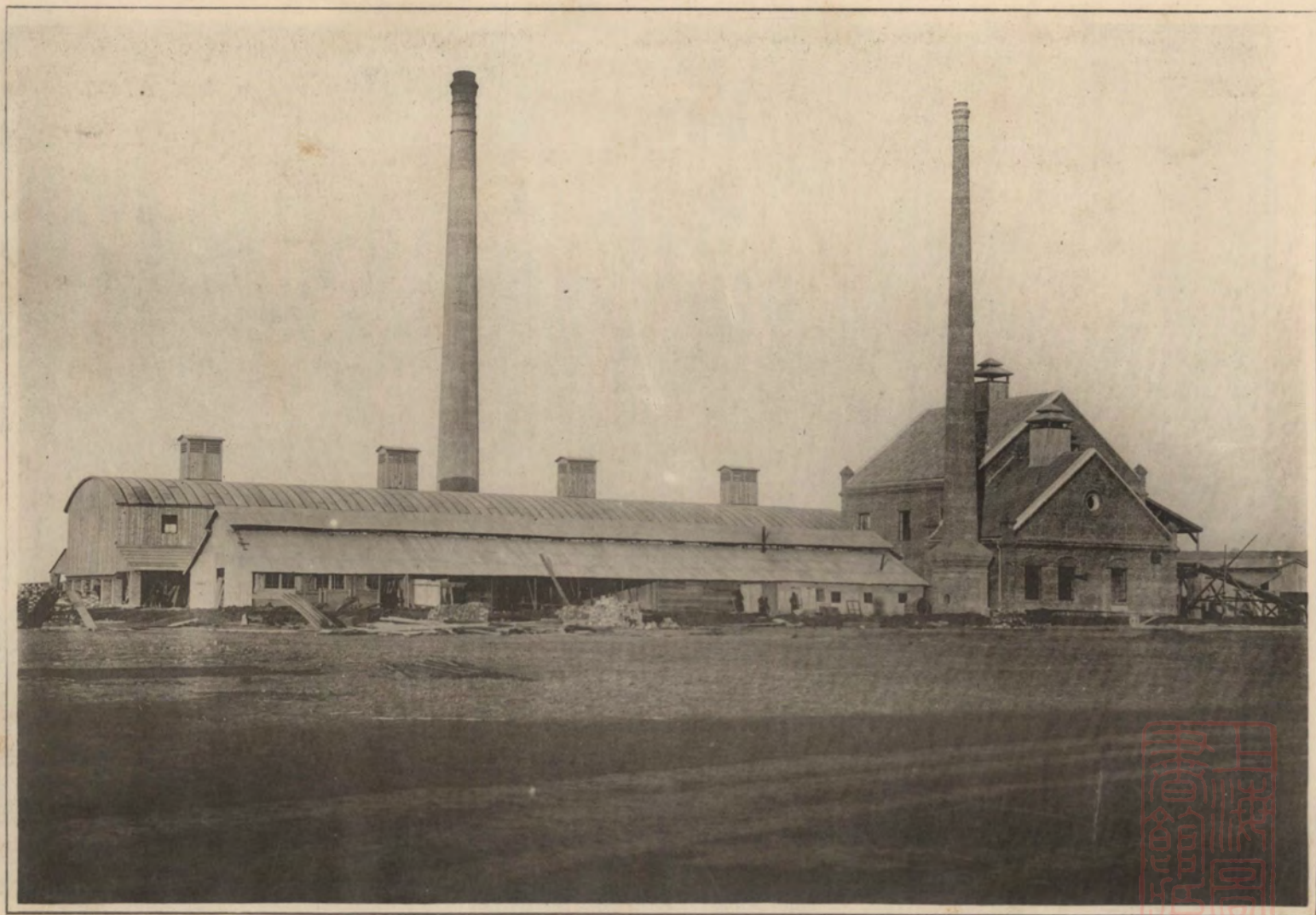
ROOFING TILES MANUFACTORY.

洋 灰 花 磚 機 器



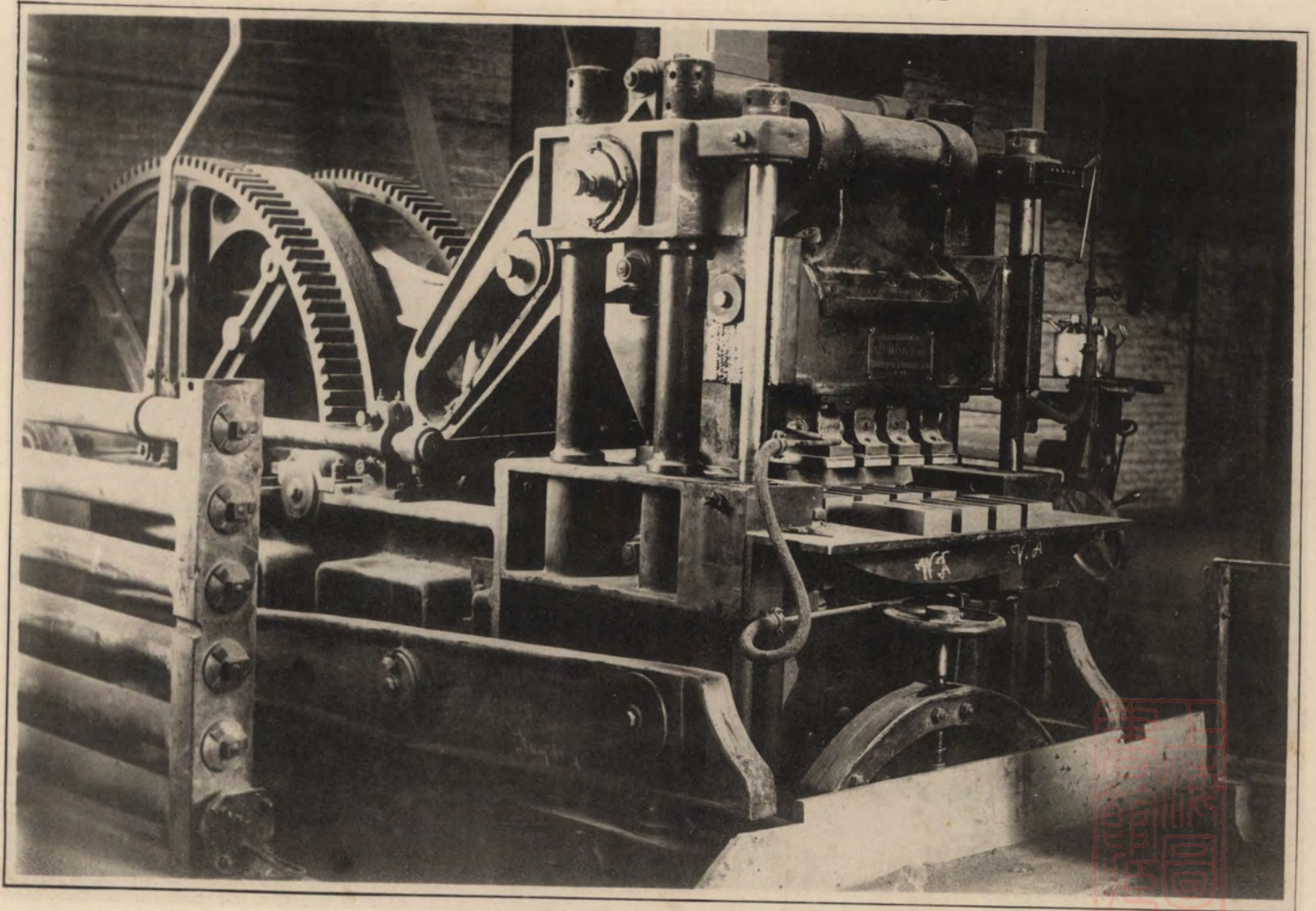
MOSAIC TILES MANUFACTORY.

北分廠汽機房及西式磚窯



BRICK FACTORY (Ma-chia-kou).

乾 法 壓 磚 機 器



BRICK PRESSING MACHINE.

Besides the Works at Tangshan, there is an extensive Factory at Machiakou manufacturing high class Fireclay, Fireclay Brick and Clinker Tiles.

The following kinds of Firebricks are always in stock:—

- No. 1002 : These are hard burnt Clinker Bricks of good shape, useful for exceptionally strong Foundations & for Paving sidewalks, Streets, Stables, etc.
- No. 1003 : These are handmade bricks for common building purposes.
- No. 1004 : These bricks are pressed by machinery, they are hard & well shaped & are first class Facing (Red or Yellow) Bricks for Buildings.
- No. 1031 : These are good for walling in Boilers, lining Stoves & all other such purposes. Their melting point is not below Segercone 26 (1650° C).
- No. 1032 : These bricks are made with our best Fireclay and stand a melting point not lower than Segercone 29 (1710° C). They are good for all purposes where they are exposed to Fire and on account of their white surface and good rectangular shape are at the same time ornamental.
- Special Bricks : By selecting the best fireclay and by mixing it with brick flour (Chamotte) we are able to manufacture in Tangshan a firebrick with somewhat better refractory properties than our ordinary firebrick No. 1032. The melting point of these special bricks lies not lower than Seger cone 32 (or about 1790° Celsius). These bricks are fit for blast furnaces, and, of course, for any other purposes, where they have to stand intense heat.
- In regard to our special bricks it may be said that after many years experience, we are now able to turn them out in any dimension and shape, so as to fulfil all requirements.



本公司兼造缸磚附畧

按本公司製造洋灰以外附屬品以缸磚為大宗自宣統元年
年在馬家溝擴充北分廠先設西式磚窰製造缸磚連唐山
廠內原出缸磚併計每年可達至一千萬塊按缸磚一名火
磚全係用純淨矸子土機器磨研極細再用機器壓製極堅
之坯西式窰內燒成分別砌牆砌鍋爐砌烟筒等用編號分
類應用咸宜其禁火力達至一千八百度足媲美外洋最高等
貨年來銷場亦極推廣爰將各種缸磚大概用法臚列於後

第一千零零二號者質堅式美用砌重要基座及鋪墊街道
極為合宜

第一千零零三號者用於通常建築工程及砌牆壁既壯觀
瞻尤稱耐久

第一千零零四號者分紅黃二種質均堅細整齊凡臨街之
高樓大廈以及亭臺娛目所在用以砌建殊屬壯觀

第一千零三十一號者為砌築鍋爐門徑等用其禁火力在
一千六百五十度以上

第一千零三十二號者係用極高矸子土造成禁火力在一
千七百十度以上凡受火煉之工程用以砌築最為相宜且
此磚純白平正倘用作莊飾品洵稱特色

再本廠尚有一種最高禁火力缸磚專備砌築熔煉五金質
料之火爐可隨買客意照圖製造其禁火力達至一千八百
度較第一千零三十二號者更勝一籌

上海图书馆藏书



A541 212 0015 93208



專造

各色瓦 磚方 洋灰 磚花 管排水

各色火泥 磚缸大小 管缸種各

MANUFACTURERS

OF

Cement Mosaic, Paving, Roofing & Ridge Tiles.

Fireclay, Firebricks, and Clinker Tiles (glazed and

unglazed) Cement and Fireclay Drain Pipes.



1619669