



CARLYLE CAMPBELL LIBRARY

CLASS

A  
376.8

BOOK

M54V  
1952

ACCESSION

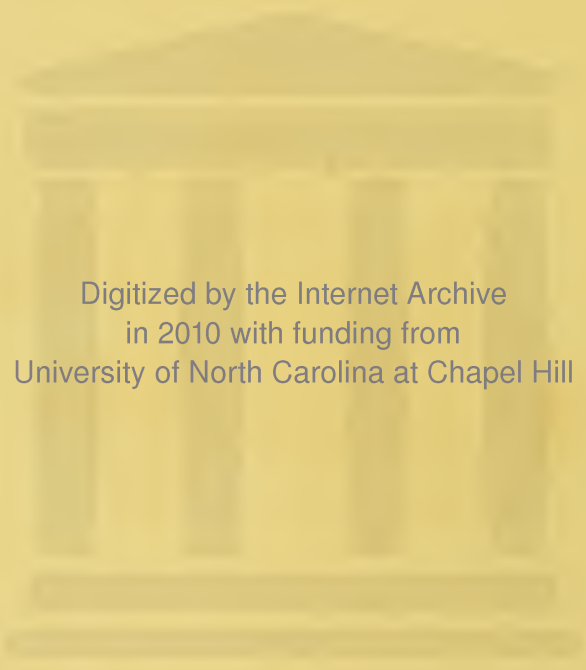
35707

MEREDITH COLLEGE  
RALEIGH, N. C.



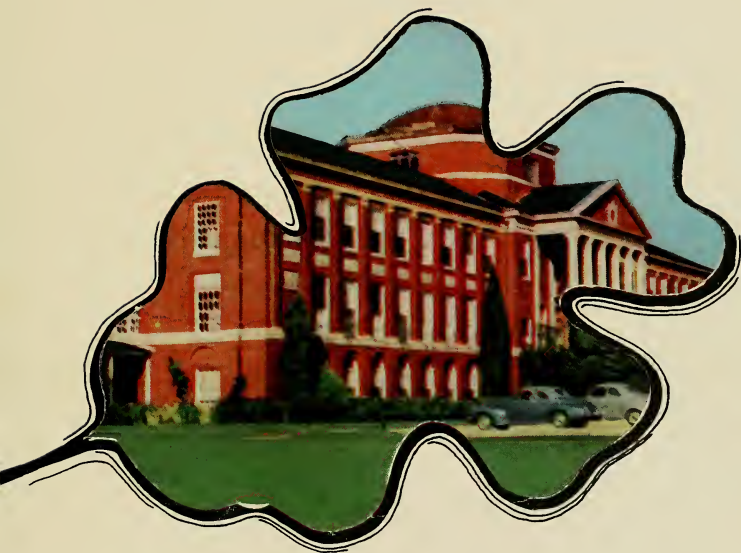
CARLYLE  
CAMPBELL  
LIBRARY

Meredith College  
Raleigh, NC 27607-5298



Digitized by the Internet Archive  
in 2010 with funding from  
University of North Carolina at Chapel Hill

<http://www.archive.org/details/oakleaves1952bapt>



MEREDITH



COLLEGE



JANE SLATE

*Editor*

CAROLYN BRADY

*Business Manager*

THIS BOOK WAS PRINTED BY EDWARDS & BROUGHTON OF RALEIGH, NORTH CAROLINA. THE PAPER USED WAS WARREN'S LUSTRO AND THE TYPE BASKERVILLE. ENGRAVINGS WERE MADE BY THE LYNCHBURG ENGRAVING COMPANY OF VIRGINIA. THE ART WORK WAS DONE BY KATHERINE BARBEHENN, AND THE PHOTOGRAPHY BY THE WALLER AND SMITH STUDIOS OF RALEIGH, AND HARRY E. COOPER.



The 1952

# OAK LEAVES



The Yearbook of Meredith College

Raleigh, N. C.

CARLYLE CAMPBELL LIBRARY  
MEREDITH COLLEGE

# Dedication

Not so much for the tangible as for the intangible joy which you have afforded us through the years; not so much for the results as for the undaunted efforts in achieving them; not so much for the person as for that spirit that has inspired so many; but most of all for the giving of yourself, for your untiring hours of service to the school in bringing to us the "gift of the gods"—we dedicate the 1952 volume of the OAK LEAVES to

**MISS BEATRICE DONLEY**







Miss Beatrice Donley

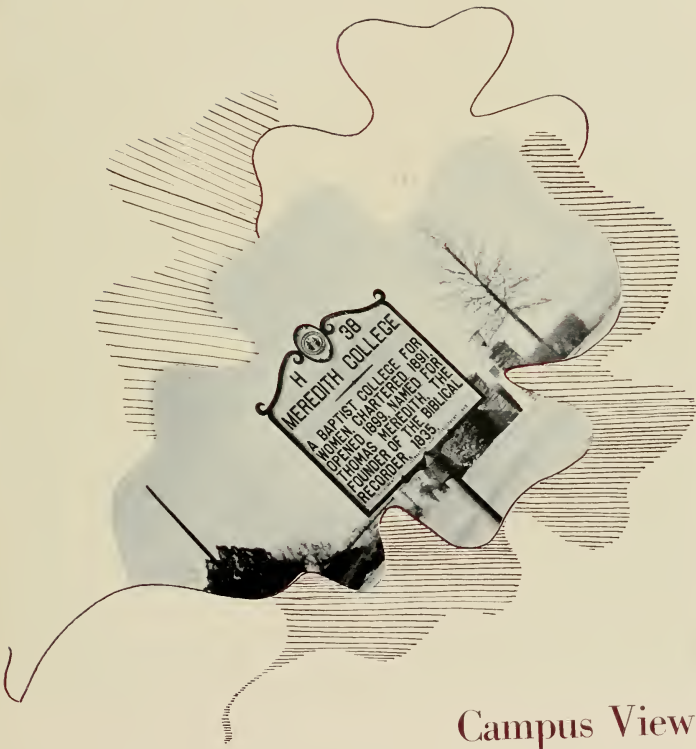
35707

# Foreword

IN the past the OAK LEAVES has been presented to us in many different forms . . . a pictorial history of Meredith, Meredith at night, memories of Meredith tied together with the school songs, a typical day at Meredith, a diary, a scrapbook. This year the OAK LEAVES once again comes to you, not in any form other than that intended . . . a college annual to bring back to you in years to come forgotten faces; to restore to you forgotten memories—a book of cherished days gone by, and one, which I hope will ever remain dear to your hearts.

## Contents

Now as you turn through these pages and watch the oak leaves fall, one by one may you be reminded of 1. The Campus; 2. The Administration; 3. The Classes; 4. Athletics; 5. The Activities: Organizations, Clubs, Honorary Organizations; 6. The Features; 7. The Candid Camera.



## Campus Views





*Entrance to the Campus*



*The Grove*



*Faircloth Dorm, Courtside*



*Archway by Jones Dorm*





# Faculty

# Board of Trustees

L. M. Massey, *President* . . . . . Zebulon  
Madeline May Allen, *Vice-President* . . . . . Troy  
Zeno Martin, *Secretary-Treasurer* . . . . . Raleigh

## Terms Expire 1952

Claude U. Broach . . . . . Charlotte  
Maude Davis Bunn . . . . . Raleigh  
H. M. Roland . . . . . Wilmington  
James B. Turner . . . . . Laurinburg  
W. H. Weatherspoon . . . . . Raleigh  
Eph Whisenhunt . . . . . Clayton

## Terms Expire 1953

E. J. Britt . . . . . Lumberton  
C. T. Council . . . . . Durham  
Foy J. Farmer . . . . . Raleigh  
Grace Olive Lane . . . . . Asheville  
L. M. Massey . . . . . Zebulon  
Raymond A. Bryan . . . . . Goldsboro

## Terms Expire 1954

Madeline May Allen . . . . . Troy  
R. G. Deyton . . . . . Brevard  
R. Elmore Earp . . . . . Selma  
J. B. Efird . . . . . Charlotte  
Lydia Josey Kitchin . . . . . Scotland Neck  
C. Gordon Maddrey . . . . . Ahoskie

## Terms Expire 1955

Annie Sarah B. Abbott . . . . . Elizabeth City  
L. N. Bagnal . . . . . Winston-Salem  
R. T. Howerton . . . . . Lincolnton  
Wm. T. Joyner . . . . . Raleigh  
Ione K. Knight . . . . . Madison  
Carlton S. Prickett . . . . . Burlington  
J. D. Wilkins . . . . . Greensboro

## Executive Committee

W. H. Weatherspoon, <i>Chairman</i>	R. Elmore Earp
Foy J. Farmer, <i>Secretary</i>	Wm. T. Joyner
Maude Davis Bunn	L. M. Massey
C. T. Council	Eph Whisenhunt

To  
Meredith  
College  
Students



This review of the year 1951-52 at Meredith is treasured as a record of happy fellowship and worthy achievement, each deriving its real value from the other. We believe and hope that, faithful to the discipline and ideals represented herein, in the years ahead "You shall see greater things than these."

Cordially yours,  
CARLYLE CAMPBELL  
*President*

# Administration



ZENO MARTIN, A.B.  
*Bursar*



LEISHMAN A. PEACOCK, Ph.D.  
*Dean of the College*



LOUISE E. FLEMING, A.M.  
*Dean of Students*

# Administration

SCHWARTZ, MARGARET, A.M.  
*Assistant Dean of Students*

YEAGER, BETTY JEAN, A.B.  
*Secretary to the Dean of Students*

RHODES, LATTIE  
*Secretary to President*

MARSH, VERA TART  
*Registrar*

LIVERMAN, CAROLYN  
*Secretary to Registrar*

TAYLOR, ANABEL S., B.S.  
*Secretary to the Dean*

GWYER, BETTY  
*Secretary to Bursar*

ENGLISH, ELIZABETH W., A.B.  
*Secretary to the Business Manager*

BAITY, HAZEL, A.B. in L.S.  
*Librarian*

GREENE, JANE, A.B. in L.S.  
*Assistant Librarian*

BONE, SHIRLEY, A.B.  
*Assistant Librarian*

WALKER, HELEN, A.B.  
*Manager of Student Supply Store*

WALKER, NANCY, A.B.  
*Publicity Director*

BELL, JANET TEAGUE, R.N.  
*Nurse*

HARKINS, RUBY, R.N.  
*Assistant Nurse*

SENER, WILLIAM, M.D.  
*College Physician*



# Faculty



ADAMS, MRS. KATHARINE, A.B., A.M.  
*Instructor in Physical Education*

ANDERSON, JANET, A.B., B.M.  
*Instructor in Music*

BELL, LILA, M.Ed.  
*Assistant Professor in Education*



BISSETTE, DORIS WEST, A.M.  
*Instructor in Sociology and Economics*

BOYCE, HELEN ASHLEY, M.Mus.  
*Instructor in Music*

BREWER, ELLEN DOZIER, A.M.  
*Professor in Home Economics*



CANADAY, ERNEST F., Ph.D.  
*Professor in Mathematics*

COLLINS, HELEN JO, M.S.  
*Instructor in Chemistry*

COOPER, HARRY E., Mus.D., F.A.G.O.  
*Professor in Music*



CROOK, ROGER H., Th.D.  
*Associate Professor in Religion*

CUNNINGHAM, PHYLLIS, A.M.  
*Instructor in Physical Education*

PRUYN, BILLIE RUTH, A.M.  
*Instructor in Religion*



DAVIS, MARION, A.M.  
*Instructor in Art*

DONLEY, BEATRICE, B.M.  
*Associate Professor in Music*

DORSETT, HARRY K., A.M.  
*Assistant Professor in Education*



FREUND, SUANNE H., Ph.D.  
*Assistant Professor in Modern Languages*

GREGORY, MARGARET H., A.M.  
*Instructor in Business*

HANYEN, JENNIE M., A.M.  
*Associate Professor in Home Economics*



HARRIS, JULIA HAMLET, Ph.D.  
*Professor in English*

HUCKABEE, ELIZABETH R., A.M.  
*Instructor in Modern Languages*

JOHNSON, MARY LYNCH, Ph.D.  
*Professor in English*

# Faculty

KEITH, ALICE BARNWELL, Ph.D.  
*Associate Professor in History*

KELMAN, HELEN P., A.M.  
*Instructor in Biology*

LANHAM, LOUISE, Ph.D.  
*Assistant Professor in English*

LEMMON, SARAH McCULLOH, A.M.  
*Assistant Professor in History*

McALLISTER, QUENTIN OLIVER, Ph.D.  
*Professor in Modern Languages*

McLAIN, RALPH E., Ph.D.  
*Professor in Religion*

NEBLETT, LUCY ANN, A.M.  
*Assistant Professor in Modern Languages*

PASEWARK, WILLIAM R., A.M.  
*Assistant Professor in Business*

PRATT, STUART, Mus.M.  
*Professor in Music*

PRICE, HELEN, Ph.D.  
*Professor in Ancient Languages*

ROSE, NORMA, Ph.D.  
*Assistant Professor in English*

SYRON, LESLIE W., Ph.D.  
*Instructor in Sociology and Economics*

TILLEY, ETHEL, Ph.D.  
*Associate Professor in Psychology and Philosophy*

TYNER, BUNYAN YATES, A.M.  
*Professor in Education*

VAUGHN, ELIZABETH, Ph.D.  
*Professor in Sociology*

WALLACE, LILLIAN PARKER, Ph.D.  
*Professor in History*

WEYER, PHYLLIS, A.M.  
*Assistant Professor in Music*

WHITAKER, FORRESTINE, A.M.  
*Professional Diploma in Musical Education;  
Instructor in Music*

WOODMAN, RUTH S., A.M.  
*Instructor in Music*

YARBROUGH, JOHN A., Ph.D.  
*Professor of Biology*

YARBROUGH, MARY E., Ph.D.  
*Professor in Physics and Chemistry*



# Scenes from Alice In Wonderland



Gryphon (Dr. Harris); Dormouse, Mad Hatter and Alice (Miss Hanyen, Dr. Canaday, Mrs. Kelman); Walrus and Carpenter (Mr. Pashwach and Dr. Tilley); Duchess (Miss Lemon); Tiddle-dee and Tiddle-dum (Miss Grimmer and Miss Bell); Fairy (Miss Whitaker); Rabbit (Dr. Wallace); scene of entire cast.





Classes

## The Senior Class

Freshmen to seniors—how long those four years stretched ahead of us at first and how short they seem now. The years have dimmed the terrifying aspects of that first year with orientat on week, the mad rush for chaperones, and those frightening term papers, but have made them a part of our most treasured memories of Meredith. Winning stunt as sophomores; planning the Junior-Senior with the help of our “little sisters” as juniors; and wearing those long-awaited caps and gowns as seniors, make us reflect with pride on the part of our life which is completed. It is with a mixed feeling of sadness and eagerness that we leave to take our places in a new part of our lives, hoping to give to others something of that which Meredith has given to us.



OFFICERS

<i>President</i> . . . . .	DOROTHY FISHER	<i>Secretary</i> . . . . .	MARY EVELYN HENSLEY
<i>Vice-President</i> . . . . .	RUTH ANN SIMMONS	<i>Treasurer</i> . . . . .	LYNETTE ADCOCK

# Class of 1952



LYNETTE ADCOCK  
Oxford, N. C.

*Phi*

*History and Government*

Phi Treasurer 2, Chief Marshal 4; Student League of Women Voters 3, President 4; International Relations Club 3, 4; Little Theatre 3, 4; State Student Legislature Representative 3, Interim Council 4; OAK LEAVES Staff 4, Class Treasurer 4.

Adcock

DORIE ANN ATKINS  
Raleigh, N. C.

*Astro*

*Business*

Folk Dance Club 2, 3, 4; Committee for Religious Emphasis Week 3; Tomorrow's Business Women 3, 4, Program Chairman 4; Third Vice-President of Day Students 4.

BARBARA BALLENGER  
Raleigh, N. C.

*Astro*

*Business*

Freshman Counselor 2; Third Vice-President of Day Students 2; Badminton Champion 2; Student Government 2, 3, 4; Tomorrow's Business Women 2, 3, 4; Transfer Counselor 3; Second Vice-President of Day Students 3, President 4; Nominating Committee 4; Sigma Pi Alpha 2, Secretary 3, President 4; Superlative 4.



Atkins



Ballenger

CAROLYN ALSTON BALLENTINE  
Fuquay Springs and Fayetteville, N. C.

*Astro*

*Sociology*

Stunt 1; Art Club 2, 3; Sociology Club 3, 4; Hoofprint Club 3, 4, Publicity Chairman 3; Spanish Club 4; Education Club 4; May Court 3.



Ballentine

FRANCENE KING BARBER  
Asheville, N. C.

*Astro*

*History*

Folk Dance Club 3; Student League of Women Voters 3, 4; North Carolina Student Legislature 3, 4; International Relations Club 3, Secretary-Treasurer 4; Astro Senior Marshal 4; "Mrs." Club 4; Dean's List.

BARBARA BONE  
Nashville, N. C.

*Phi*

*Voice and Public School Music*

Choir 2; Freshman Play 1; Freshman Counselor 2; Glee Club 2; Sextet 2; B.S.U. Council, Music Chairman 2; Granddaughter's Club 1, 2, 3, 4, President 4; Folk Dance Club 3; Madrigal Group 3; MENC 3, 4; Chorus 3, 4; OAK LEAVES Staff 4, Photography Editor; Class President 3; Nominating Committee 3; Sigma Alpha Iota 2, 3, 4, Pledge Vice-President 2, Vice-President 4; Superlative; Dean's List.



Barber



Bone

Meredith College

# Class of 1952

EMILY PARKER BOONE

Jackson, N. C.

*Phi*

*Education*

McDowell Music Club 2; Chorus 2, 3; Y.W.A. 1, 2, 3, 4; Freeman Religion Club 3; Stunt 3; Education Club 3, 4.



Boone



MOLLY BRITT

Fairmont, N. C.

*Astro*

*Education*

Y.W.A. 1, 2; Education Club 3, President 4.



MARY EVELYN BROWN

Wallace, N. C.

*Phi*

*Religion*

Glee Club 1, 2, Secretary 2; Freshman Counselor 2; B.S.U. Council, Church Representative 2, Training Union Director 3, President 4; Y.W.A. 1, 2, 3, 4, Circle Leader 1; Religion Club 1, 2, 3, 4; Class Treasurer 2, Secretary 3; Sociology Club 4; Little Theatre 4; Nominating Committee 4; Superlative.

Britt  
Brown



ONA ALLENE BROWN  
Asheboro, N. C.

*Phi*

*Sociology*

Freeman Religion Club 2; Colton English Club 2, 3, 4; Sociology Club 2, 3, 4; Education Club 3; *Twig* Advertising Staff, Typist.

O. Brown

POLLY SUE BUNN  
Emporia, Virginia

*Astro*

*Education*

May Court 2; Psi Chi Club 2; Folk Dance Club 3; Y.W.A. 2, 3; Education Club 2, 3, 4.



CORNEIL BYRNE  
Ft. McClellan, Alabama

*Phi*

*History*

Packer Collegiate Institute, Brooklyn, N. Y., 1.



Bunn  
Byrne

Meredith College

# Class of 1952

EMILY BURDEN CASTELLOE

Aulander, N. C.

*Astro*

*Education*

Home Economics Club 1, 2; Education Club 3, 4; International Relations Club 4; Student League of Women Voters 4.



Castelloe

NANCY ANN CHEEK

Chapel Hill, N. C.

*Phi*

*Education*

Choir 1; *Acorn* Staff, Class Editor 2; Education Club 3, 4; Y.W.A. 1, 2, 3, 4; Freeman Religion Club 1, 2, 3, 4; Sigma Pi Alpha 2, 3.

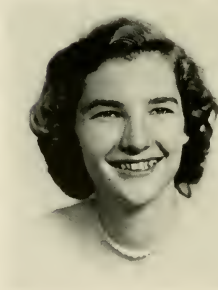
CAROLINE MERRITT CHILDRESS

Mount Airy, N. C.

*Astro*

*Education*

Converse College 1, 2; Saddle Club 2; "Mrs." Club 3, President 4; Dean's List,



Cheek



Childress





KATHLEEN CHRISCOE  
Seagrove, N. C.

*Astro*

*Business*

Soccer Varsity 1; Basketball 1, 2; Y.W.A. 1, 2, 3; *Twig* Staff 3, Chief Typist 4; Tomorrow's Business Women 2, 3, 4; President 4.

Chriscoe

SALLY SUE CLARK  
Valdese, N. C.

*Phi*

*Art*

Freshman Counselor 2, 3; *Acorn* Staff, Assistant Art Editor 3; *Twig*, Art Editor 3, 4; Publicity Committee, Religious Emphasis Week 3; Phi Treasurer 3; Y.W.A. Hall Secretary 4; Education Club 4; Alpha Rho Tau 1, 2, 3; Silver Shield 4.

ELIZABETH ANN COOPER  
Raleigh, N. C.

*Astro*

*Education*

W.C.U.N.C. 1; Aletheian Society 1; Colton English Club 2; Education Club 4; Hoof-Print Club 4.



Clark

Cooper

Meredith College



MARIE EDWARDS

Miss Meredith



SALLY MASSEY

Most Original

# Class of 1952



Creech

KATHRYN ANNE CREECH

Four Oaks, N. C.

*Phi*

*Education*

Freshman Counselor 2, 3, 4, Chief Counselor 4; Hoof-Print Club 1, 2, Secretary 1, Vice-President 2; *Twig* Reporter 2; Folk Dance Club 2, 3, 4; Tomorrow's Business Women 2; Student Government 3, 4; Nominating Committee Chairman 4; Education Club 4; *Who's Who Among Students in American Colleges and Universities*; Superlative; Dean's List.

JACQUELINE MARIE CREEF

Norfolk, Virginia

*Astro*

*Voice*

Basketball 1; German Club 1, 2, 3; Folk Dance Club 3; Freshman and Transfer Counselor 2; Astro Head Cheerleader 2, 3, 4; Astro Council 4; Astro Music Director 4; Chorus 3, 4, Business Manager 4; Madrigal Group 3; Choir 2; McDowell Music Club 1, 4; Y.W.A. Hall Secretary 1, Devotional Chairman 2, Vice-President 3; College Head Cheerleader 3.

ROBERTA DAVENPORT

Alexandria, Virginia

*Astro*

*History*

Hockey Varsity 1, 2; Soccer Varsity 1; Softball Varsity; Hoof Print Club 2; Folk Dance Club 2, 3, 4; International Relations Club 3, 4; Student League of Women Voters 3, 4; Education Club 4.



Creef



Davenport



Day

BERNICE DAY  
Murfreesboro, N. C.

*Astro*

Hoof-Print Club 1, 2, 3, 4, Secretary 3; Y.W.A. 2;  
International Relations Club 2, 3, 4, Vice-President 4;  
Student League of Women Voters 2, 3, 4, Reporter 4;  
Education Club 4; Little Theatre 4.

*History*

*Astro*

*Biology*

Marion Junior College 1, 2; Reporter Choir 1, 2;  
Student Council Treasurer 2; *Hatchet* Business Manager  
2; *Twig* Reporter 1; Barber Science Club 3, President  
4; Student Government 4.

JANIE ELIZABETH DILLARD

Marion, Virginia

MARIE LOUISE EDWARDS  
Portsmouth, Virginia

*Phi*

Student Government Council 2, 3, 4, Sophomore Representative 2,  
Secretary 3, President 4; OAK LEAVES, Class Editor 1, 2; *Twig* Re-  
porter 2, 3; Colton English Club 3; International Relations Club 3, 4;  
Student League of Women Voters 4; Student Legislature 4; Com-  
mittee of 100 3, 4; Silver Shield 3, 4, Vice-President 4; *Who's Who*  
*Among Students in American Colleges and Universities*; Superlative;  
Dean's List.

*History*



Edwards

Meredith College

# Class of 1952

ASHA FARRIOR  
Wallace, N. C.

*Phi*

*Business*

Class Treasurer 1; Y.W.A. 1, 2, Circle Leader 2, House Council; Tomorrow's Business Women 2, 3, 4, Treasurer 3; Phi Marshal 2, 3; Chorus 3; Nominating Committee 4; Education Club 4; College Marshal 4; May Court 1, 4.



Farring

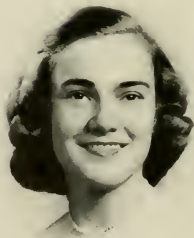


DOROTHY MOSS FISHER  
Charlotte, N. C.

*Phi*

*Business*

Hoof-Print Club 1; May Court 2; Student League of Women Voters 3; Psi Chi Club, Publicity Chairman 3; Committee of 100 3; Transfer Counselor 3; Phi Vice-President 3; Student Government, Secretary-Treasurer, Summer School; Tomorrow's Business Women 3, 4; Nominating Committee 4; Chorus 4; Class President 4; Little Theatre 3, 4; Superlative.



FRANCES SUE FITZGERALD  
Gretna, Virginia

*Phi*

*Religion*

Student Government Council 1, 3, 4, Treasurer 3; Soccer Varsity 1; Hockey Varsity 1, 2, 3, 4; Softball Varsity 1, 2, 3; Basketball Varsity 1, 3; Speedball Varsity 2, 3; A.A. Board Secretary 2; Monogram Club 1, 2, 3, 4; Freeman Religion Club 1, 2, 3, 4, Treasurer 3; Y.W.A. 1, 2, 3, 4, Community Missions Chairman 3; Superlative.

Fisher  
Fitzgerald



MARY FAITH FRYE  
Orlando, Florida

*Astro*

*Piano*

Mary Washington College 1; Choir 2, 3; Chorus Accompanist 4;  
Folk Dance Club 3, 4; Astro Chief Marshal 4

Frye

MARY RUTH GODFREY  
Statesville, N. C.

*Astro*

*Religion*

Mitchell College 1, 2; Basketball 1, 2; Kirkpatrick Athletic Award  
1; Student Christian Association 1, President 2; Historical Society 2;  
Co-Business Manager of Yearbook 2; Student Government 2; Super-  
lative 2; Freeman Religion Club 3, 4; Y.W.A. 3, 4; Monogram  
Club 4; Hockey Varsity 4.



BARBARA ETHEL HALE  
Loyall, Kentucky

*Phi*

*English*

Mars Hill College 1, 2; Glee Club 1; Scribblers Club 1, 2; Dean's  
List 2; Y.W.A. 1, 2; B.T.U. 1, 2; Student Government Council 4;  
*Acorn* Assistant Editor 4; Colton English Club, Secretary-Treasurer  
4; Y.W.A. 3, 4.



Godfrey  
Hale

Meredith College

# Class of 1952

LOU GRIFFIN HALE  
Raleigh, N. C.

*Phi*

*Education*

Mars Hill College 1, 2; Volunteers for Christ 1, 2; Clio Literary Society 2; International Relations Club 1, 2; Education Club 3, 4, President 4.



L. Hale

BOBBIE ANNE HALL  
Roxboro, N. C.

*Astro*

*Piano*

Averett College 1, 2; Y.W.A. 1, 2; Zeta Sigma Chi 1, 2; Memo, Choral Choir 1; C.S.U. Council 2; *Chanticleer* 1, 2; *Pendulum* 1, 2; Modern Dance Club 1, 2; Chorus 3, 4; B.S.U. 4; MacDowell Music Club 4; Education Club 4.

VIRGINIA ELAINE HANCOCK  
Siler City, N. C.

*Astro*

*Education*

Campbell College 1, 2; *Pine Burr* 2; Dramatics Club 1, 2; Business Club 1, 2, 3; Home Economics Club 2; Hoof-Print Club 3; Education Club 3, 4; Y.W.A. 1, 2, 3, 4.



Hall



Hancock





BARBARA COX HARPER

Galax, Virginia

*Phi*

*Public School Music*

Class Vice-President 1; Y.W.A. Hall President 1; Little Theatre 1, 2, 3, 4, Treasurer 2, President 4; Committee of 100 1, 2, 3; McDowell Music Club 1, 2, 3; Student Government Council 2; Counselor 2; Phi Sgt-at-Arms 2; Choir 2; Glee Club 2; Ensemble 2; Chorus 3, 4; Secretary 3; Colton English Club 2; Madrigal Group 3; M.E.N.C. 3, 4; "Mrs." Club 4; Nominating Committee 4.

Harper

DOROTHY HART

Salemburg, N. C.

*Phi*

*Education*

Fineland College 1; Theta Kappa Sigma, Secretary-Treasurer 1; B.S.U. Council 3; Freeman Religion Club 2, 3, 4; Education Club 3, 4; Folk Dance Club 4; Transfer Counselor 4; Secretary of Counselors 4; Y.W.A. 1, 2, 3, 4, Hall Program Chairman 2; Hall Devotional Chairman 4.

MARY EVELYN HENSLEY

Burnsville, N. C.

*Phi*

*Education*

Mars Hill College 1, 2; Clio Literary Society 1, 2; Glee Club 1, 2; Y.W.A. 1, 2; Softball Club 2; Student League of Women Voters 3; Chorus 3, 4; Y.W.A. 3, 4; Student Government Council 4; Class Secretary 4; Counselor 4; Education Club 4; Colton English Club 4.



Hart



Hensley

Meredith College



ASHA FARRIOR

College Marshal



DOROTHY FISHER

Most Attractive

# Class of 1952



MARTHA HOLLAND  
Caroleen, N. C.

*Phi*

*History*

Freeman Religion Club 1, 2; International Relations Club 1, 3, 4, Secretary-Treasurer 3, President 4; Sociology Club 2; Y.W.A. 1, 2, 3; House Council 3; Student Government Council 3; Student League of Women Voters 4; North Carolina Student Legislature 4.

Holland

ANNE HOLLIS  
Laurinburg, N. C.

*Astro*

Mars Hill College 1; Y.W.A. 1; German Club 1; Education Club 2, 3, 4, Vice-President 4.

*Education*

VELMA ELIZABETH HOLT  
Princeton, N. C.

*Phi*

*Business*

Y.W.A. 1, 2; Tomorrow's Business Women 2, 3, 4; Education Club 4.



Hollis



Holt



Horn

LOUISE HORN  
Shelby, N. C.

*Astro*

*Sociology*

Hoof-Print Club, Officer 1; Sociology Club 3, 4, Vice-President 4; Little Theatre 3, 4; Spanish Club 4; *Acorn*, Assistant Business Manager 4; International Relations Club 4; Student League of Women Voters 4.



Johnson

JEAN CAUSEY JOHNSON  
Four Oaks, N. C.

*Phi*

*Business*

Soccer Varsity 1; Basketball 1, 2, Manager 2; Freshman Counselor 2; A.A. Board 2, 3; Tennis Manager 3; *Twig* Typist 3; Tomorrow's Business Women 2, 3, 4; Folk Dance Club 2, 3, 4; Education Club 4; Monogram Club 3, 4; Student Government Council 4, Social Standards Chairman.

JEANETTE WHITFIELD JOYNER  
Asheville, N. C.

*Phi*

*English*

Hoof-Print Club 1; Y.W.A. 1, 2, 3, 4; Hall Program Chairman 1; Colton English Club 2, 3, 4, President 4; Freeman Religion Club 1, 2, 3, 4; Sociology Club 2; Committee of 100 3; Social Emphasis Week Chairman 4; Student Government Council 3, 4; House Council 3, 4; Education Club 3, 4; Dean's List.



Joyner

Meredith College

# Class of 1952

LEATRICE ELIZABETH KING  
Richlands, N. C.

*Phi*

*Religion*

Freeman Religion Club 1, 2, 3, 4; Y.W.A. 1, 2, 3, 4; Colton English Club 2; Education Club 4.



King



MARY JANE KING  
Nashville, N. C.

*Phi*

*Education*

Peace College 1, 2; Rho Delta Chi Society 1, 2, Secretary 2; Class Secretary 2; Sigma Pi Alpha 2; Stunt Night 2; Business Staff of *The Lotus* 2; Education Club 3, 4, Secretary 4.



IRIS CARLENE KINLAW  
Lumberton, N. C.

*Phi*

*Biology*

Folk Dance Club 1, 2, 3, 4; Barber Science Club 2, 3, 4, Secretary 3; Colton English Club 2; Class Treasurer 3; *Twig* Business Manager 4; Education Club 4; Dean's List.

M. King  
Kinlaw



LUCILLE ELLEN KINSLAND  
Franklin, N. C.

*Phi*

*Home Economics*

Brevard College 1, 2; Home Economics Club 1, 2, Secretary 2; International Relations Club 1, 2; Home Economics Club 3, 4; Y.W.A. 3, 4.

Kinsland



EVELYN KRAUSE  
Union Mills, N. C.

*Phi*

*Education*

Gardner-Webb College 1, 2; B.S.U. Council, Devotional Vice-President 2; Honor Society 2; College Marshal 2; Y.W.A. 1, 2, 3, 4, Hall President 3, Secretary 2; McDowell Music Club 3; Education Club 3, 4; Student Government Council 4; Dorm President 4; Dean's List.

HELEN ANN LEATHERWOOD  
Bryson City, N. C.

*Phi*

*History*

Sociology Club 2; Hoof-Print Club 2, 3; International Relations Club 2, 3, 4; Student League of Women Voters 2, 3, 4.



Krause  
Leatherwood

Meredith College

# Class of 1952

LUCYANN LIDDY  
Washington, D. C.

*Phi*

*Religion*

Freeman Religion Club 1, 2, 3, 4, Vice-President 4; Y.W.A. 2, 3, 4; Folk Dance Club 1, 2, 3, 4; *Twig* Staff 3; Stunt 3; B.S.U. Council 4; Colton English Club 4.



Liddy

VIRGINIA HARRIS McGRANAHAN  
Raleigh, N. C.

*Astro*

*English*

Greensboro College 1, 2; Emerson Society 1, 2; Music Club 1, 2; G.C. Daughters 1, 2; Education Club 3, 4; "Mrs." Club 3, 4; Colton English Club 3, 4; May Court 4.

MARTHA UPCHURCH MARTIN  
Raleigh, N. C.

*Astro*

*Business*

St. Mary's 1; Assistant Organist Scholarship 1; Glee Club 1; Orchesis 1; Peabody Conservatory 2; Johns Hopkins University 2; "Mrs." Club 3, 4, Secretary 3, 4; Tomorrow's Business Women 4.



McGranahan



Martin





JEAN MASON  
Newport, N. C.

*Phi*

*Mathematics*

Granddaughters' Club 1, 2, 3, 4; Sociology Club 2; Folk Dance Club 2, 3, 4; Canaday Math Club 2, 3, 4; Vice-President 4; Education Club 3, 4; Barber Science Club 3, 4; *Acorn* 4.

Mason

SALLY MASSEY  
Raleigh, N. C.

*Phi*

*Chemistry*

A.A. Board, Freshman Representative 1, Treasurer 2, Vice-President 3, President 4; Class Vice-President 2; *Acorn* Distribution Manager 2; Monogram Club 2, 3, 4; Hoof-Print Club 2, 3; Folk Dance Club 2, 3, 4; Barber Science Club 2, 3, 4; Little Theatre 3, 4; Religious Emphasis Week 1, 2, 3, Treasurer 2, Chairman 3; Hockey Varsity 1, 2, 3, 4; Softball Varsity 1, 2, 3; Speedball Varsity 3; Silver Shield 3, 4, President 4; Kappa Nu Sigma Secretary 4; *Who's Who Among Students in American Colleges and Universities*; Superlative; Dean's List.

DOTT MILLER  
Ahoskie, N. C.

*Astro*

*Education*

Colton English Club 2; Education Club 2, 3, 4; Little Theatre 3, 4; OAK LEAVES Business Staff 3, Associate Editor 4; *Twig* Reporter 4; A.A. Board, Swimming Manager 4; Sigma Pi Alpha 2, 3, 4, Secretary 4; Alpha Psi Omega 3, 4; Kappa Nu Sigma 3, 4, Vice-President 4; Dean's List.



Massey



Miller

Meredith College



BARBARA BALLENGER

Best All 'Round Town Student



JANE SLATE

Most Versatile

# Class of 1952



J. Miller

JEAN MILLER  
Burlington, N. C.

*Phi*

*Voice and Public School Music*

Class President 2; Choir 2; Glee Club 2; Sextet 2; MacDowell Music Club 2, 3; Committee of 100, 2, 3; Chorus 3, 4, Librarian 3, President 4; OAK LEAVES Staff 3, 4, Business Manager 3, Senior Class Editor 4; German Club 3; Madrigal Group 3; Creative Rhythms Club 2, 3; MENC 3, 4; Nominating Committee 3; Phi Marshal 4; Sigma Pi Alpha 1, 2, 3, 4; Sigma Alpha Iota 2, 3, 4, Pledge President 2, Vice-President 3, President 4; Kappa Nu Sigma 3, 4, President 4; Silver Shield 4; *Who's Who Among Students in American Colleges and Universities*; Superlative; Dean's List.

ALICE WARD MILTON  
Hopewell, Virginia

*Phi*

*Sociology*

Averett College 1, 2; Y.W.A. 1, 2; C.S.U. Council 2; Red Cross 2; Sociology Club 3, 4; French Club 3; Y.W.A. 3, 4; *Twig* Staff 4.

DRULYNN MORGAN  
Spring Hope, N. C.

*Phi*

*Religion*

Mars Hill College 1, 2; Clio Literary Society 1, 2, Censor, Secretary 2; B.S.U. Council 2; Student Council President Summer School 2; Girl's Choir; Freeman Religion Club 3, 4; Sociology Club 3, 4; Chorus 3, 4, Chorus Treasurer 4; Y.W.A. 3, 4, Treasurer 4; A.A. Board, Social Chairman 4; Education Club 3.



Milton



Morgan



Morris

BARBARA ANGELIA MORRIS  
Durham, N. C.

*Astro*

*Voice*

Mars Hill College 1, 2; Julliard School of Music Summer School; Music Honor Club 1, 2, President 2; Glee Club 1, 2, President 2, Student Conductor 2; Band Majorette 1; Nonpareil Literary Society, Pianist 1, Secretary 2; B.S.U. Council 1, 2; Chorus 3, 4, Librarian 4; MacDowell Music Club 3, 4; Madrigal Group 3; S.A.I. 3, 4, Program Chairman 4; Folk Dance Club 3; MENC 3, 4, President 4; Dean's List.



Morton

ZETA ELIZABETH MORTON  
Jacksonville, N. C.

*Phi*

*Mathematics*

Barber Science Club 2, 3, 4; Canaday Mathematics Club 2, 3, 4, Vice-President 3, President 4; Education Club 4.

JANE WEBB MURPHY  
Asheville, N. C.

*Phi*

*Art*

Y.W.A. 1; Hoof-Print Club 1, 2; Alpha Rho Tau 1, 2, 3; Psi Chi Club 2; Little Theatre 4; Student League of Women Voters 4; Art Editor of *Acorn*.



Murphy

Meredith College

# Class of 1952

NORMA LEE MURRAY  
Burgaw, N. C.

*Phi*

Y.W.A. 1, 2, 3, 4; Education Club 3, 4; Dean's List.

*Education*



Murray



JOAN NEIGHBORS  
Benson, N. C.

*Phi*

*Piano*

Choir 2; Sigma Alpha Iota 2, 3, 4, Chaplain 3, Sgt.-at-Arms 4;  
Chorus 3, 4, Accompanist 3, 4; Kappa Nu Sigma, Reporter 4; Dean's  
List.



HONORE MAYME PARKER  
Raleigh, N. C.

*Astro*

*Sociology*

Freeman Religion Club 2, 3, 4; Sociology Club 2, 3, 4, President 4.

Neighbors  
Parker



P. Poole

PEGGY POOLE

Clayton, N. C.

*Astro*

*Education*

Alpha Rho Tau 1, 2, 3, Secretary-Treasurer 2; Y.W.A. 1, 2, 4; Freshman Counsellor 2; Astro Marshal 2; Hoof-Print Club 2; Education Club 2, 3, 4; Chorus 4; International Relations Club 4; Little Theatre 4; May Queen.

ROSALYN LUCILLE POOLE

Dunn, N. C.

*Astro*

*Education*

Class President 1; Nominating Committee 1; Committee of 100, 1, 2, 3; OAK LEAVES Staff 2, Photography Editor; Freshman Counsellor; Chairman of Seminar Committee 2; Little Theatre Pledge 1, 2; B.S.U. Council 2, Secretary; Student Government Council 3, 4, Treasurer 3, Vice-President 4, President in Summer School; Education Club 3, 4; Colton English Club 2, 4; International Relations Club 4; Bee Hive Committee 2, 3; *Twig* Reporter 3; Silver Shield 4; *Who's Who Among Students in American Colleges and Universities.*



GRACE ELIZABETH POW

Cramerton, N. C.

*Astro*

*English*

Campbell College 1, 2; J.R.C. 1, 2, Reporter 2; Greater B.S.U. Council 1; Committee of 100, 1; Dramateers 2; *Creek Pebbles* Staff 2; Student Legislature 2; International Relations Club 3, 4; Little Theatre 3, 4; Student League of Women Voters 3, 4, Vice-President 4; Colton English Club 3, 4; *Acorn* Class Editor 4; Committee of 100, 3.



R. Poole  
Pow

Meredith College

# Class of 1952

JULIA PRESSON  
Charlotte, N. C.

*Phi*

*Spanish*

International Relations Club 1; Sigma Pi Alpha 1, 2, 3, 4, Treasurer 3, 4; Sociology Club 2; Psi Chi Club Associate Member 3; Colton English Club 3, 4, Vice-President 3; OAK LEAVES Staff 3; Acorn Staff 3, Editor 4; Spanish Club 4; Nominating Committee 4; Kappa Nu Sigma 4, Treasurer; Dean's List.



Presson

VIRGINIA RUTH PRICE  
Clifton, N. C.

*Phi*

*Home Economics*

Brevard College 1, 2; Home Ec Club 1, 2; Folk Dance Club 1, 2; House Council 2; Woman's Athletic Association, 1, 2; Home Economics Club 3, 4; Y.W.A. 3, 4, Circle Chairman 4; Education Club 4.

LOIS ODELL PRITCHETT  
Fredericksburg, Virginia

*Phi*

*Piano*

Choir 2; Glee Club 2; Hoof-Print Club 2; MacDowell Music Club 2, 3, 4, President 4; Creative Rhythms Club 3; German Club 3; Student Government Council 4; House Council 4.



Price



Pritchett





ALICE JEANNE RAMSEY  
Kinston, N. C.

*Phi*

*Religion*

Mars Hill College 1, 2; Clio Literary Society President 2; Mission Council 2; Classical Club 1, 2; Forensic Club 1, 2; M-Club 2; Volunteers for Christ 1, 2; Basketball 1, 2; Softball 1, 2; Tennis 1, 2; Hiking 1, 2; Dormitory Officer 2; Y.W.A. 1, 2; Dean's List; *Twig* Staff 3, Editor 4; Freeman Religion Club 3, 4; International Relations Club 3, 4; Student League of Women Voters 3, 4; Nominating Committee 4.

Ramsey

MARY ALICE RANDALL  
Spartanburg, South Carolina

*Astro*

*Business*

Mars Hill College 1, 2; Nonpareil Literary Society 1, 2; Business Club 2; Athletic Association 1, 2; Tomorrow's Business Women 3, 4; May Court 3; Dean's List.

IRMA BLANCHE RAY  
Raeford, N. C.

*Phi*

*History*

Home Economics Club 1; International Relations Club 2, 3, 4, Social Chairman 4; Student League of Women Voters 3, 4.



Randall



Ray

Meredith College



ANN CREECH

Cutest



Most Intellectual

JEAN MILLER

# Class of 1952



Reagan

ANNE KATHERINE REAGAN

Asheville, N. C.

*Phi*

*Education*

Mars Hill College 1, 2; Clio Literary Society 1, 2; Scriblerus Club 1, 2; Volunteers for Christ 1, 2; Student League of Women Voters 3; Education Club 3, 4, Treasurer 4; Y.W.A. 1, 2, 3, 4, Publicity Chairman 4; Counsellor 4; Dean's List.

LANE ROBERSON

Washington, N. C.

*Astro*

*Sociology*

Sociology Club 2, 3, 4; Creative Rhythms Club 3; Education Club 4; Psi Chi Club 4; Student League of Women Voters 4.

MARTHA PATRICIA ROBERTS

Lenoir, N. C.

*Astro*

*Organ*

Mars Hill College 1, 2; Nonpareil Literary Society 1, 2; Orphan Music Club 1, 2; Glee Club 2; Sigma Alpha Iota 3, 4; Hoof-Print Club 3, 4; Choir 3; Chorus 4.



Roberson



Roberts



Rodwell

LYDIA VIRGINIA RODWELL

Charlotte, N. C.

*Phi*

*Home Economics*

Choir 1; Glee Club 1; International Relations Club 1; Home Economics Club 1, 2, 3, 4; Y.W.A. 1, 2, 3, 4; Sigma Pi Alpha 2, 3, 4; Freeman Religion Club 3, 4; Education Club 4; Student Government Association 4; Dorm President 4.



Royal

MATEL ROYAL

Roseboro, N. C.

*Phi*

*Education*

Y.W.A. 1, 2, 3, 4; Freeman Religion Club 3; Education Club 3, 4.

MARY ELLYN ROYER

Bishopville, S. C.

*Phi*

*Education*

Home Economics Club 1; Hoof-Print Club 1, 2, 3; Spanish Club 2, 3; Chorus 2, 3; Education Club 3, 4; Colton English Club 3, 4.



Royer

Meredith College

# Class of 1952

BARBARA CAROL SCHETTLER  
Knoxville, Tennessee

*Astro*

*History*

*Twig* Staff 1, 2, 3, Feature Editor 2, Managing Editor 3; International Relations Club 2, 3, 4; Student League of Women Voters 2, 3, 4; Y.W.A. 1, 2; Freshman Counsellor 2, 3; Colton English Club 2; Stunt 2, 3; N. C. Student Legislature 3, 4, Recording Clerk, House of Representatives 3, Interim Council 4; N. C. Collegiate Press Association 3, 4, Secretary 3; Nominating Committee 4; *Astro* President 4; Dean's List.



Schettler



MARGARET GRAHAM SCOTT  
Haw River, N. C.

*Phi*

*Education*

Peace College 1, 2; Education Club 3, 4; Y.W.A. 3, 4.



MARY JO SHAW  
Raleigh, N. C.

*Phi*

*Home Economics*

Sigma Pi Alpha 1, 2, 3, 4; Home Economics Club 1, 2, 3, 4, Treasurer 2, Foreign Service Chairman 3, President 4; Transfer Counsellor 4; Colton English Club 4; State Home Economics Club, Treasurer 4; Y.W.A. Hall Publicity Chairman 4; Dean's List.

Scott  
Shaw



RUTH ANN SIMMONS  
Martinsville, Virginia

*Phi*

*Sociology*

Committee of 100, 1; Freeman Religion Club 1, 2; Little Theatre 1, 2, 3, 4, Make-up Chairman 2, 3, 4; Chorus 2, 3, 4, Publicity Manager 4; Colton English Club 2, 3, Reporter 3; *Twig* Staff 1, 2, 4, Sports Editor 4; Education Club 3, 4; Sociology Club 3, 4; A.A. Board 4, Publicity Manager 4; Alpha Psi Omega 3, 4, Vice-President 4; Class Vice-President 4.

Simmons



MILDRED WALLACE SIMPSON  
Beaufort, N. C.

*Phi*

*Mathematics*

Hoof-Print Club 1; Canaday Math Club 2, 3, 4, Secretary-Treasurer 4; Education Club 2, 3, 4.



KATHERINE ORA SITES  
Hickory, N. C.

*Phi*

*Education*

Mars Hill College 1, 2; Y.W.A. 1, 2, 3, 4, Hall Leader 1, 2, Secretary 4; Y.T.C. 1, 2; Volunteers for Christ 1, 2; Scriblerus Club 2; *Twig* Staff, Typist 4; Education Club 3, 4.

Simpson  
Sites

Meredith College

# Class of 1952

BETTY JANE SLATE

Burlington, N. C.

*Phi*

*Voice and Public School Music*

Hoof-Print Club 2; Choir 2; Glee Club 2; Sextet 2; Committee of 100, 2; Chorus 3, 4, Business Manager 3; Madrigal Group 3; Sigma Alpha Iota 2, 3, 4, Pledge Secretary-Treasurer 2, Treasurer 3, 4; MacDowell Music Club 3; MENC 3, 4; Little Theatre Pledge 2; Little Theatre 3, 4; Alpha Psi Omega 4; Class Vice-President 3; Folk Dance Club 3; Creative Rhythms Club 3; A.A. Board 3, Monogram Club 4; *Twig* Staff 3; OAK LEAVES Editor 4; Nominating Committee 4; Silver Shield 4; *Who's Who Among Students in American Colleges and Universities*; Superlative; Dean's List.



Slate

BETTY JO SMITH

High Point, N. C.

*Phi*

*Voice and Public School Music*

Hoof-Print Club 1, 2; McDowell Music Club 1, 2, 3; Little Theatre 2, 3, 4; Glee Club 2; Choir 2; Chorus 3, 4, Treasurer 3, Vice-President 4; Sextet 2; B.S.U. Council 3; Madrigal Group 3; MENC 3, 4; College Songleader 3, 4; Committee for Religious Emphasis Week 3; Phi Society Secretary 3, President 4; Hall Proctor 1, 2, 3; Alpha Psi Omega 3, 4; Folk Dance Club 3; Nominating Committee 4; Superlative.



B. Smith

JANET HAZEL SMITH

Windsor, Connecticut

*Astro*

*Home Economics*

Vermont Junior College 1, 2; International Relations Club 1, 2; Glee Club 1, 2; Choir 1, 2; Citizenship List 1, 2; Social Committee 2; Camera Club 2; Dean's List; Home Economics Club 3, 4; Student League of Women Voters 3, 4; Barber Science Club 3, 4; French Club 3, 4; Y.W.A. 3, 4.



J. Smith





BETTY SUE SPENCE

Raleigh, N. C.

*Phi*

*Education*

Campbell College 1, 2; B.S.U. Council Treasurer 2; Y.W.A. 1, 2, 3, 4; Education Club 4.

B. Spence

META MAY SPENCE

Overhills, N. C.

*Astro*

*Education*

Freeman Religion Club 1; Granddaughters Club 1, 2, 3, 4; Education Club 2, 3.

MARTHA POWELL SPIERS

Tarboro, N. C.

*Astro*

*Education*

Hoof-Print Club 1, 2, 3, President 2; Granddaughter's Club 1, 2, 3, 4, Co-Chairman of Needlework Guild 2, Reporter 3; *Twig* Staff 2; Committee for Religious Emphasis Week 2; Colton English Club 2, 3, 4; A.A. Board 2, 4; Tomorrow's Business Women 2; Monogram Club, President 4; Education Club 3, 4; Psi Chi Club 4, Vice-President; Folk Dance Club 2, 3, 4; Counsellor 4; OAK LEAVES Staff 4; Student Government Social Chairman, Summer School; Dean's List; Chorus 4.



M. Spence



Spiers

Meredith College



SUE FITZGERALD

Most Athletic



MARY EVELYN BROWN

Friendliest

# Class of 1952



B. Stallings

BARBARA ELAINE STALLINGS  
Louisburg, N. C.

*Astro*

*Education*

Hoof-Print Club 1; Y.W.A. 1, 2, 3, 4; Education Club 3, 4; Counselor 4.

MARTHA LALLA STALLINGS  
Winston-Salem, N. C.

*Phi*

*Religion*

Mars Hill College 1, 2; Clio Literary Society 1, 2; Glee Club 1, 2; Y.W.A. 1, 2; Soccer Club 1; Archery Club 2; Orpheon Club; Education Club 1; Freeman Religion Club 3, 4, President; Chorus 3; Y.W.A. 3, 4; B.S.U. Council 4.

AMANDA LOUISE STEWART  
Hamilton, N. C.

*Phi*

*Public School Music*

Mars Hill College 1, 2; Volunteers for Christ 1, 2; Y.T.C. 1, 2; Mission Council, Music Chairman; Glee Club 1, 2; Music Club 1, 2, President 2; Literary Society, Censor and Secretary 2; Chorus 3; Choir 3, 4; Religious Emphasis Week Committee 3; B.S.U. Third Vice-President 4; Y.W.A. 1, 2, 3, 4; Education Club 3; MacDowell Music Club 3, 4; MENC 3, 4; Sigma Alpha Iota 3, 4.



M. Stallings



Stewart



Strickland



Sullivan

PHYLLIS KELLY STRICKLAND  
Raleigh, N. C.

*Organ*

St. Mary's 1, 2; Assistant Organist 2; Dramatics Club 1; Glee Club 1; Varsity Basketball 1; Varsity Baseball 1; Senior Skit 2; Salem College 3; Glee Club 3.

PATRICIA SULLIVAN  
Nashville, Tennessee

*Phi*

*Voice*

Ward-Belmont 1, 2; Choir and College Octet 1, 2; Certificate in Voice and Piano 1, 2; Del Vers Society 1, 2; French Club 1, 2; Grinnell College 3; Women's Glee Club 3; Chorus 4.

LINDA ELIZABETH SWANN  
Buie's Creek, N. C.

*Phi*

*Public School Music*

Campbell College 1, 2; Epsilon Pi Eta Honor Society 1, 2; Dramatics Club 1, 2; Student Volunteers 1; *Creek Pebbles* 2; Choir 2; Chorus 3, 4; *Twig* 4; Y.W.A. Officer 4.



Swann

Meredith College

# Class of 1952

DWAN ANN SWINDELL  
Washington, N. C.

*Astro*

*Religion*

Freeman Religion Club 1, 2, 4; *Twig* Staff 2; Y.W.A. Circle Enlistment Chairman 2; Sociology Club 3, 4; Transfer Counsellor 3; Astro Marshal 3; Student Government Council 3, 4; Dorm President 4; Astro Council 3, 4; Silver Shield 4.



Swindell



JANET TATUM  
Coolesmece, N. C.

*Phi*

*Home Economics*

Freeman Religion Club 1; Student Budget Committee 2; Class Secretary 2; A.A. Board 2; Granddaughters Club 1, 2, 3, 4; Home Economics Club 2, 3, 4; *Acorn* 3; Folk Dance Club 3; Y.W.A. 1, 2, 3, 4; Student Government Council 3; Dean's List.



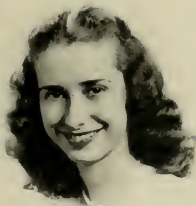
Tatum  
Taylor

LIB TAYLOR  
Chocowinity, N. C.

*Astro*

*Business*

Tomorrow's Business Women 2, 3, 4; Education Club 4; *Acorn* Staff 4.



DOROTHY THOMAS

Leaksville, N. C.

*Astro*

*Religion*

Home Economics Club 1; Glee Club 2; Chorus Vice-President 3; *Twig* Advertising Staff 3, Advertising Manager 4; Y.W.A. Literary Chairman 3, President 4; B.S.U. Council 4; Freeman Religion Club 3, 4.

Thomas

MARILYN MORRISSETTE UPCHURCH

Raleigh, N. C.

*Phi*

*English*

W.C.U.N.C. 1, 2; College Choir 1; Cornelian Society 1, 2; Sigma Pi Alpha 3, 4; Colton English Club 3, 4, Vice-President 4; French Club 3, 4, President 4; Education Club 4; Dean's List.



MARY ANN WESTBROOK

Dunn, N. C.

*Astro*

*Education*

St. Mary's 1; *Stage Coach* and *Bulletin* Business Staffs; Chapel Choir 1; Glee Club 1; Y.W.A. 1; Mu Society 1; Choir 2; Chorus 3, 4, Librarian 3; Freeman Religion Club 2, 3, 4; Elections Official 3; Education Club 3, 4; Y.W.A. 2, 3, 4, Circle Devotional Chairman 2, Circle President 3; Student Government Treasurer, Summer School; Committee for Religious Emphasis Week 2, 3, 4, Discussion Group Chairman 3; B.S.U. Council, Program Chairman 3, Vice-President 4; International Relations Club 4; Silver Shield Secretary-Treasurer 4; Dean's List.



Upchurch

Westbrook

Meredith College



BARBARA BONE

Wittiest

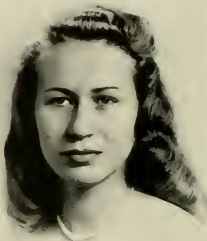




Most Popular

BETTY JO SMITH

# Class of 1952



Whitfield

ANGERLANE WHITFIELD  
Rocky Mount, N. C.

*Astro*

Flora Macdonald College 1; Chorus 3, 4; MacDowell  
Music Club 4.

*Piano*



Wicker

ELSIE BROOKS WICKER  
Sanford, N. C.

*Astro*

Y.W.A. 1, 2, 3; Hoof-Print Club 1, 2; Spanish Club 2, 3,  
4; Education Club 3, 4; Little Theatre 3, 4.

*Education*



ELSIE JOYCE WILLIAMS  
Fredericksburg, Virginia

*Phi*

*Organ*

Greater B.S.U. Council 1, 2; Committee of 100, 1; Sextet Accompanist  
2, 3, 4; *Twig* Reporter 2, Photography Editor 3, 4; Choir 2; Chorus  
3; Cheerleader 3, Head Cheerleader 4; MacDowell Music Club 4;  
House Council 4; Little Theatre 3, 4; Phi Pianist 2, 3, 4; Y.W.A.  
Social Chairman 2; B.S.U. Convention Organist 2, 3, 4.



LIBERTY BUNN WILSON  
Raleigh N. C.

Mrs. Club 4; Tomorrow's Business Women 4.

*Business*

Williams  
Wilson

## Meredith College

# The Silver Shield



Westbrook, Edwards, Creech, Slate, Massey, Smathers, Stallings

It is the aim of the members of the Silver Shield, honorary leadership society, to try to promote, "by example and by precept," devotion to the ideals of Meredith. For achieving this goal the society has no set program, but each year it strives in various ways to further the ideals of a well-rounded student life, a high type of Christian activity, and a high standard of honor and co-operation in the student body.

Membership is limited to nine senior members, some of whom are chosen in the spring of the junior year and some in the spring of the senior year. Two associate members are selected every fall from the Junior Class.



D. Miller



J. Miller  
Neighbors

# Kappa Nu Sigma



Massey  
Presson

Those students who have achieved a high scholastic standing over a period of two years make up the membership of Kappa Nu Sigma. This society takes its name from the Greek words, *Kallos*, *Nous*, *Sophia*—beauty, sound-mindedness, and intelligence. In order to further the kind of scholarship expressed in these words, Kappa Nu Sigma sponsors a chapel speaker, an annual spring banquet and lecture, and the awarding of a scholarship to the freshman having the highest scholastic standing in her class.



Massey



Who's  
Who



Slate  
J. Miller

R. Poole  
Crech



Edwards

## Junior Class

Our third year at Meredith has been the brightest yet. As juniors, we realized that our goals were nearer than ever before and at last, each of us could be a “big sister.” To help us get better acquainted, we gave our little sisters a party in October, and, though we had forgotten how many questions a freshman can ask about college, as big sisters we were delighted to supply answers from our impressive two years’ experience.

With typical enthusiasm we went to work on Stunt and Palio in the spring. Excitement from the colorful celebration had hardly left us before we were busily planning for one of the great events of our college years—the Junior-Senior Banquet. That evening already has a prominent place in our favorite college memories.

The significance of this year is shown not by any one event, but rather by the many varied activities we have shared. As a class and as individuals we have grown through these college experiences, and with confidence we look forward to the challenge of our Senior Year at Meredith.



BETTY ANN HIGHSMITH  
PRESIDENT

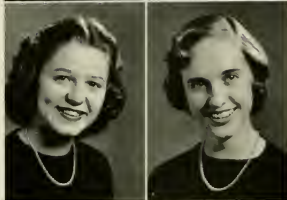
BETTY ANN HIGHSMITH . . . . . *President*  
ELIZABETH HAMRICK . . . . . *Vice-President*

CONNIE MOORE . . . . . *Secretary*  
VENETIA STALLINGS . . . . . *Treasurer*



ALLRED, BETTY JEAN, South Boston, Va.; *Astro*

ANDREWS, FRANCES MARIE, Graham; *Phi*



BAIRD, MARTHA, Shelby; *Astro*

BARBEHENN, KATHERINE ANNA, Plainfield, N. J.;  
*Phi*



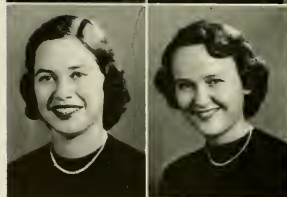
BAUCOM, ANN ELIZABETH, Wilmington; *Phi*

BENNER, GLYNDORA, Carthage; *Astro*



BETTS, LILLIAN VANN, Ivof, Va.; *Astro*

BLALOCK, OLIVE GRACE, Kinston; *Astro*



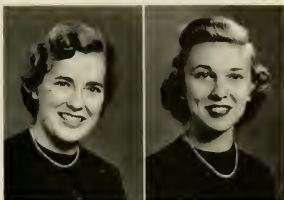
BOWDEN, PENINA SLAVEN, Kinston; *Phi*

BRADLEY, EDITH JOSEPHINE, Scotland Neck; *Phi*



BRADY, ERMA CAROLYN, Raleigh; *Astro*

BRIGMAN, ALMA OLIVIA, Raleigh; *Astro*



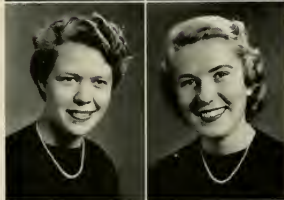
BRIGMAN, DOROTHY EVELYN, Rowland; *Phi*

BROWN, ETHEL JOYCE, Elizabeth City; *Phi*



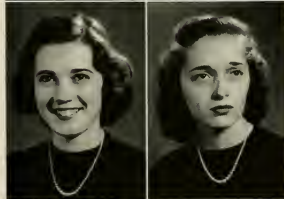
BRUTON, ANNE, Mount Gilead; *Phi*

BUENING, ADELE ANNE, Charlotte; *Astro*



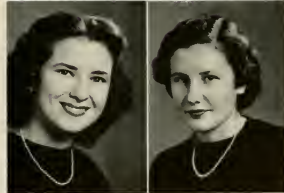
BULLARD, JUNE ARDEN, Raleigh

BURCH, MARY, Charlotte; *Phi*



CAINES, MONA FAYE, Bolton; *Phi*

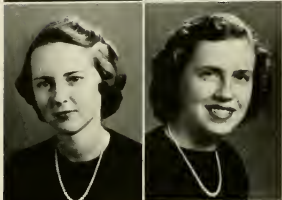
CANNADY, MELROSE, Bunnlevel; *Phi*





CANNADY, ELIZABETH ANN, Richlands; *Phi*

CASEY, MARY ANN, North Wilkesboro; *Astro*



CASSTEVENS, HELEN BETH, Shelby; *Astro*

CAUDLE, SARAH LOU, Aberdeen; *Astro*



CHALK, MARY EVA, Dunedin, Fla.; *Astro*

CLATT, SHIRLEY ELIZABETH, Myrtle Beach,  
S. C.; *Phi*



COLE, RUTH JEANNETTE, Fayetteville; *Astro*

COVINGTON, JOYCE KATHRYN, Rockingham; *Phi*



COX, BETTY LOU, Pamplico, S. C.; *Phi*

CONE, SARAH JESSIE, Wagram; *Astro*

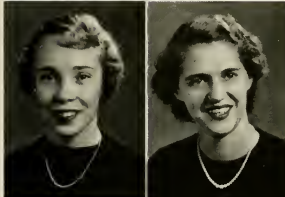
CRAWFORD, NANCY ANNE, Hillsboro; *Phi*

CRYMES, ELLEN, Meherrin, Va.; *Phi*



DAVIS, LOUISE PATRICIA, Winston-Salem; *Phi*

DAWSON, BEVERLY JANNE, Charlotte; *Astro*



DIXON, ELIZABETH ANN, Mount Vernon Springs; *Astro*

DULA, JEAN BRADLEY, Kipling; *Phi*



DULA, PATRICIA DEAN, Durham; *Astro*

EARP, PEGGY HILL, Richmond, Va.; *Phi*



EDGE, MARY REBECCA, Aberdeen; *Phi*

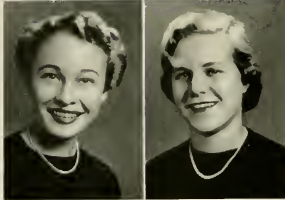
ELLER, MARGARET JUNE, Chilhowie, Va.; *Phi*





ESTES, MARY BERRY, Chase City, Va.: *Astro*

FAUCETTE, ELIZABETH KENDRICK, Durham;  
*Astro*



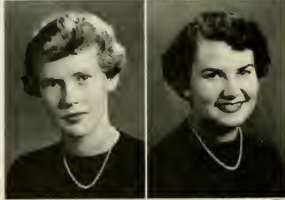
FINKLEA, BETTY JEAN, Pamplico, S. C.; *Phi*

FISHER, JOHNNIE MAY, Concord; *Astro*



FISHER, MARY IDA, Concord; *Astro*

FOSHEE, DIXIE VIRGINIA, Dunedin, Fla.; *Astro*



FRANCIS, BESSIE SUE, Waynesville; *Astro*

GARRETT, TREVAH LOUISE, Moyock; *Phi*



GEORGE, LOUISE, Raleigh

GODWIN, MARY ANN, Ahoskie; *Astro*

GOUMA, CLAIRE, Athens, Greece; *Phi*

HALL, MARY ELLA, Asheboro; *Phi*



HARRICK, ELIZABETH ANN, Shelby; *Astro*

HARRIS, VIRGINIA, Vaughan; *Phi*



HART, ALLEN WILKINSON, Waynesville; *Astro*

HENRY, ELEANOR MINERVA, Hendersonville;  
*Phi*



HENSON, HELEN CARTHAGE, Carthage; *Astro*

HIGSMITH, BETTY ANN, Jacksonville; *Phi*



HOOKS, LYNETTE, Fremont; *Astro*

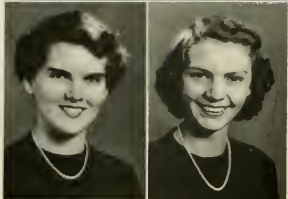
HOOTS, REBECCA ANN, Raleigh





HORNE, GWENDOLYN GREY, Atkinson; *Phi*

HOUGH, JULIA SOPHIA, Charlotte; *Phi*



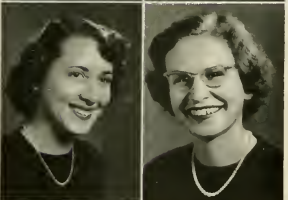
HOUSE, NANCY ELIZABETH, Asheboro; *Phi*

HOWARD, HOLLY LEE, Winston-Salem; *Astro*



IPOCK, JUANITA FLORENCE, Ernul; *Phi*

ISSACS, MARY JO, Winston-Salem; *Phi*



JAMES, VIRGINIA CATHERINE, Waynesville; *Phi*

JOHNSON, WILLIE MABEL, Conway, N. C.; *Phi*



KING, EVELYN COLE, Seagrove; *Astro*

KING, MARION FRANCES, Henderson; *Phi*

KISTLER, NANCY LEE, Charlotte; *Phi*

LANGLEY, JOAN GORDON, Lynchburg, Va.;  
*Astro*

LEOPARD, JEANNETTE ALICE, Waynesville; *Phi*

LIMER, BERNIECE WATKINS, Norlina; *Phi*

LONG, BETSY, Roxboro; *Astro*

LU, LILLIAN SUNG-HSI, Durham; *Phi*

MCGEE, BETSY BROOKS, Winston-Salem; *Phi*

MCGOWAN, KATHLEEN DAMERON, Faison; *Phi*

MCGUGAN, LOUISE ANNETTE, Cordele, Ga.;  
*Astro*

MCLAMB, DORIS JEAN, Benson; *Phi*



# The Class



MADDREY, EMMA JEAN, Seaboard; *Astro*

MASSENGILL, PEGGY ANN, Benson; *Phi*



MIDYETTE, BEULAH ANNE, Kinston; *Astro*

MILlicAN, SHELLEY HART, Roxboro; *Phi*



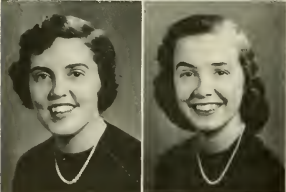
MIZELLE, BILLIE LOUISE, Charlotte; *Phi*

MOODY, FRANCES HARRIETT, Sanford; *Astro*



MOORE, MARY CONSTANCE, Myrtle Beach,  
S. C.; *Phi*

NICHOLSON, MRS. SARAH RIDGELL, Raleigh;



NOTTINGHAM, PHYLLIS, Exmore, Va.; *Astro*

O'QUINN, ANNE HOWE, Lillington; *Phi*



PALMER, MARY ANN, Jacksonville, Fla.; *Phi*

PARKER, LUCY VIRGINIA, Lasker; *Astro*



PARTIN, VIRGINIA ANN, Chadbourn; *Astro*

PENDEGRAFT, PATRICIA ANN, Waynesboro, Va.;  
*Astro*



PERRY, DORIS MARIE, Elizabeth City; *Phi*

PHILLIPS, JOYCE ELLEN, Fort Mill, S. C.; *Phi*



RATLIFF, SUSAN ANN, Wadesboro; *Phi*

ROUSE, MARRIE GORE, Ralcigh



SCHRUGGS, MILLIE JEAN, Morganton; *Phi*

SEAGROVE, ANN DOUGHTY, Clinton; *Astro*



# The Class



SMATHERS, PATRICIA KARYNE, Canton; *Phi*

SMITH, ELIZABETH MARSHALL, Bladenboro;  
*Astro*



SMITH, IRMA LOUISE, Fremont; *Phi*

SMITH, SARAH LEE, Whitakers; *Phi*



SMITH, SARA LYNN, Raleigh; *Astro*

STAINBACK, DORIS ANN, Henderson; *Astro*



STANFIELD, MARY KATHERYN, Nashville; *Phi*

STALLINGS, BEULAH VENETIA, Jamesville; *Astro*

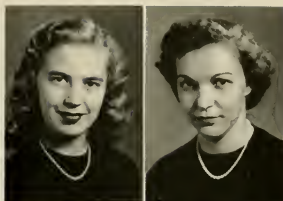


STALLINGS, ELMA JANET, Fayetteville; *Phi*

STELL, DOROTHY WIGGINS, Wake Forest; *Phi*

STEPHENSON, DAPHNE, Raleigh; *Astro*

STOUGH, SHIRLEY, Raleigh; *Astro*



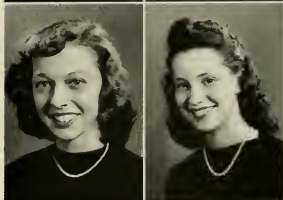
TATE, MARY LOUISE, Salisbury; *Phi*

TAYLOR, CHARLOTTE VANCE, Raleigh; *Astro*



THOMAS, CAMILLE ANNE, Wilmington; *Astro*

THOMAS, NORMA KATHLEEN, Bryson City; *Phi*



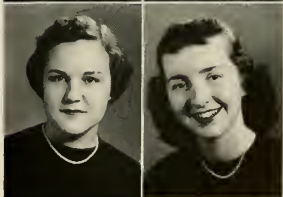
THOMAS, SARAH ELIZABETH, Roxboro; *Phi*

TRIPPEER, MARION IRENE, Roanoke, Va.; *Phi*



WALLER, LOIS ESTELLE, Mount Olive; *Phi*

WALLIS, NANCY JO, Harrisburg, Ill.; *Astro*



# The Class of 1953



WELCH, BETTY JO, Washington, D. C.; *Phi*



WEST, MARY JEAN, Waynesville; *Astro*



WESTMORELAND, ELLEN PEARL, Thomasville;  
*Phi*



WHISNANT, MARY DUNN, Raleigh; *Astro*



WHITEHURST, ANNABELLE LEE, Elizabeth City;  
*Phi*



WIGGINS, CHARLOTTE ISABEL, Dudley; *Astro*



WILLIAMS, META MAE, Kinston; *Phi*



WINSLOW, HARRIET ANN, Scotland Neck; *Astro*



WOOD, CELIA JANE, Troy; *Phi*



WRENN, JEAN, Siler City; *Phi*

## Honored Juniors



SILVER SHIELD—Janet Stallings and Pat Smathers with Sally Massey, President.

KAPPA NU SIGMA—Elizabeth Hamrick and Shirley Cliatt with Jean Miller, President.

## Sophomore Class

Once upon a time—in the middle of September—many sophomores arrived on the Meredith Campus to help the Orientation Week program which was quickly ended by the arrival of the entire student body. Remember how much fun it was to see all your old friends, to meet new ones, to decorate the room as you had planned during the summer, and to catch up on all the latest news in the jam sessions? Not long after we had settled down to our studies, the Corn Husking Bee, with its tall tales and its chicken calling and hog round-up, was in full swing. With the turn of the year and with Palio and Stunt just ahead, everyone worked hard in order to have good performances for the class. It was not long before the Sophomore Class Party was to us a memory, which could be labeled, “a good time had by all.” And then—spring was here with the May Court entertaining the Royal Queen. In June we watched our Big Sisters graduate and, with a small catch in our throat, but happiness in our hearts, we wished that they would “live happily ever after.”



PATSY BLAND  
PRESIDENT

PATSY BLAND.....President  
CAROLYNN LITTLE.....Vice President

ANN CLARK.....Secretary  
PHYLLIS TRIBLE.....Treasurer

# The Class



Addy, Roberta Ann, Stow, Mass.; Aldridge, Blanche Allen, Kinston, N. C.; Allen, Doris Irene, Smithfield, N. C.; Allen, Nancy Miriam, Cherryville, N. C.



Anglin, Elizabeth Reynolds, Winston-Salem, N. C.; Averre, Elinor Anne, San Jose, Costa Rica; Bailey, Mary Alice, Everetts, N. C.; Barbour, Melba Frances, Willow Springs, N. C.



Barnes, Marjorie Anne, Smithfield, N. C.; Barnes, Nellie Ruth, Charlotte, N. C.; Batten, Myra Jean, Selma, N. C.; Beddingfield, Cherrie Barnes, Clayton, N. C.



Belton, June Carolyn, Mount Airy, N. C.; Blalock, Sara Ann, Black Creek, N. C.; Bland, Patricia Setzer, Greensboro, N. C.; Booker, Mary Lou, Brookneal, Va.



Bowman, Frances Jacqueline, Hickory, N. C.; Braswell, Billie Anne, Mocksville, N. C.; Briggs, Dorothy Anne, Asheville, N. C.; Brown, Joanne Weathers, Southport, N. C.



Brown, Nancy Franklin, Wilkesboro, N. C.; Buchanan, Rebecca Jane, Dover, Del.; Bullard, Barbara, Raleigh, N. C.; Campbell, Norma Jane, Fieldale, Va.

## Meredith



Burges, Thea Ann, Pinetops, N. C.;  
 Carter, Betty Kathryn, Reidsville, N. C.;  
 Champion, Ruth Moore, Raleigh, N. C.;  
 Chandler, Mary Ann, Graham, N. C.



Clark, Anne Johnson, Varina, N. C.;  
 Condrey, Jane Purdy, Enfield, N. C.;  
 Corbett, Virginia Brooks, Fayetteville,  
 N. C.; Curry, Irma Jean, Anniston, Ala.



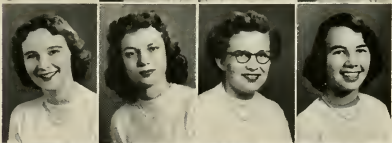
Cutts, Luetta Jane, Stovall, N. C.; Dale,  
 Sarah May, Homeville, Va.; Dalrymple,  
 Peggy Jo, Raleigh, N. C.; Dean, Sally  
 Cooper, Louisburg, N. C.



Deans, Sylvia Tolar, Saint Pauls, N. C.;  
 Dickens, Barbara Jean, Mount Gilead,  
 N. C.; Draughon, Ann Burwell, Whit-  
 akers, N. C.; Edwards, Margaret Larue,  
 Raleigh, N. C.



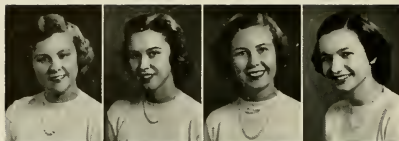
Edwards, Sara Elizabeth, Savannah, Ga.;  
 Epley, Alyce Marie, Valdese, N. C.;  
 Galloway, Ruth, Supply, N. C.; Gamble,  
 Greta Joan, Greensboro, N. C.



Gardner, Betty Lee, Angier, N. C.;  
 Gardner, Lou Ellen, Pinetops, N. C.;  
 Garrell, Fannie Nell, Clarendon, N. C.;  
 Garris, Audrey Elizabeth, Goldsboro,  
 N. C.



# The Class



Gillies, Margaret Palmer, Arlington, Va.;  
Graham, Shirley Anne, Windsor, N. C.;  
Green, Mildred Ivans, Tarboro, N. C.;  
Griffin, Mary Jocile, Rocky Mount, N. C.



Hall, Carolyn Wallace, Carthage, N. C.;  
Hampton, Dorothy Estelle, Winston-Salem,  
N. C.; Haynes, Rebecca Womble,  
Raleigh, N. C.; Hodge, Nellie Blanche,  
Raleigh, N. C.



Honeycutt, Martha Neal, Oak Ridge,  
N. C.; Huneycutt, Mary Ann, Raleigh,  
N. C.; Hunter, Elizabeth Irene, Cary,  
N. C.; Ipock, Ann Ward, New Bern, N. C.



Jackson, Caroline Lupo, Tabor City,  
N. C.; Johnson, Nancy McMillan, Tar-  
boro, N. C.; Journigan, Mildred Jean,  
Henderson, N. C.; Kerlee, Wilhelmina  
Burnette, Black Mountain, N. C.



Knott, Doris, Knightdale, N. C.; Knott,  
Dorothy, Knightdale, N. C.; Lane, Betty  
Aileen, Greensboro, N. C.; Lane, Mar-  
jorie Ann, Selma, N. C.



Lennon, Eula Ruth, Boardman, N. C.;  
Little,Carolynn Joan, Concord, N. C.;  
Loflin, Pattie Marie, Weaverville, N. C.;  
Lovell, Ardelia Ann, Clinton, N. C.

## Meredith

McMillan, Kathryn Doris, Fayetteville, N. C.; McRackan, Catherine Thomason, Southport, N. C.; McRackan, Rebecca Douglas, Southport, N. C.; Matthews, Jessie Melissa, Laurinburg, N. C.



Maxwell, Mary Gordon, High Point, N. C.; Miller, Betty Ann, Florence, S. C.; Mills, Shirley Gibson, Fayetteville, N. C.; Moore, Anne Carol, Raleigh, N. C.



Morgan, Bonny Lynn, Benson, N. C.; Morgan, Elizabeth Anne, Colonial Beach, Va.; Morrison, Lucy Kate, Roseboro, N. C.; Morton, Jean Evonne, Jacksonville, N. C.



Norris, Jacquelyn Ann, Raleigh, N. C.; O'Quinn, Patricia Davis, Lillington, N. C.; Oglesby, Lorette Hobbs, Hamilton, N. C.; Olive, Betty Lou, Apex, N. C.



Owen, Mary Elizabeth, Greenville, S. C.; Pace, Jean Shirley, Millbrook, N. C.; Page, Fallie Doris, Morrisville, N. C.; Parker, Secunda Clyde, Raleigh, N. C.



Pate, Sarah Ann, New Bern, N. C.; Phillips, Hazel Rae, Scotland Neck, N. C.; Prickett, Dorothy Lucille, Burlington, N. C.; Propst, Barbara Anne, Charlotte, N. C.



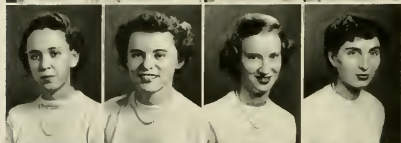
# The Class



Pulley, Doris Madeline, Ivor, Va.; Quay, Margaret Anne, Harrisburg, N. C.; Raynor, Theresa Julia, Powellsville, N. C.; Reid, Mary Bryan, Whitakers, N. C.



Renfro, Martha Alice, Wendell, N. C.; Rice, Barbara Anne, Rocky Mount, N. C.; Rummage, Mary Rose, Albemarle, N. C.; Salter, Alstine Fay, Bass River, Mass.



Sanderlin, Betty Joyce, Windsor, N. C.; Sawyer, Cecilia Carolyn, Bellcross, N. C.; Scott, Jeannette, Wilmington, N. C.; Seate, Jane Scales, Wilson, N. C.



Smith, Betty Louise, Holland, Va.; Spivey, Mary Olive, Wilson, N. C.; Stephens, Mary Louise, Raleigh, N. C.; Stewart, Margelee, Lillington, N. C.



Stone, Mary Brooks, Shelby, N. C.; Sugg, Sallie Kay, Snow Hill, N. C.; Swanzey, Frances Charleen, Charlotte, N. C.; Taylor, Dorothy Ann, Raleigh, N. C.



Teachey, Emma Grey, Rose Hill, N. C.; Tribble, Phyllis Lou, Richmond, Va.; Turpin, Lois Winston, Hopewell, Va.; Upchurch, Mary Ellen, Durham, N. C.

## Meredith

Walker, Ethel Fay, Halifax, N. C.;  
Wallace, Evelyn Richardson, Star,  
N. C.; Warrick, Mary Jane, Smithfield,  
N. C.; Waynick, Katherine Evangeline,  
Weldon, N. C.



Wells, Celia Townsend, Florence, S. C.;  
West, Shirley, Currituck, N. C.; White,  
Barbara Dee, Franklinton, N. C.; White,  
Bernice Lucretia, Hobbsville, N. C.



White, Dorothy Elizabeth, Fayetteville,  
N. C.; White, Ruthanna, Fayetteville,  
N. C.; Wilcox, Mary Ruth, Enfield,  
N. C.; Willets, Verna Arlene, Winna-  
bow, N. C.



Williams, Deloris Ann, Charlotte, N. C.;  
Williamson, Jane Elizabeth, Clinton,  
N. C.; Witherington, Janis, Vanceboro,  
N. C.; Wooten, Lillian Elizabeth, Prince-  
ton, N. C.



## The Freshman Class

We can still vividly remember the eager anticipation with which we awaited our first weekend at home; the warm intimacies of family life were constantly diverting our thoughts from our new college experiences. But during the year we have found a place in a new family; and now, as we pass the fountain, Johnson Hall, the auditorium, and the Bee-Hive, a thousand happy times come to mind, and we say, "We can't wait till we come home to Meredith in the fall!"



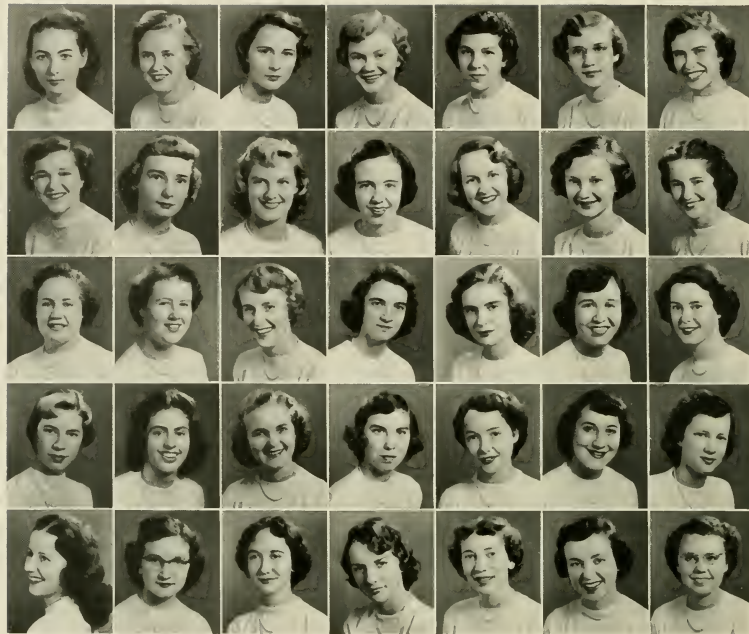
NANCY DOHERTY  
PRESIDENT

CLASS OFFICERS

President . . . . . NANCY DOHERTY  
 Vice-President . . . . . JENNIE BARBOUR

Secretary . . . . . BETTY JEAN WELLS  
 Treasurer . . . . . PATSY CROMARTIE

# The Class



*Row one:*

Adams, Annie Inez, Raleigh; Adams, Emily De, La Grange; Allen, Dessie Joan, Lincoln; Allen, Patricia Anne, Rockingham; Allen, Ruth Jeanne, Creedmoor; Aman, Sylva Dale, Dunn; Andrews, Barbara Martin, Pittsboro.

*Row three:*

Bell, Mary Lou, Rocky Mount; Bennett, Peggy Ross, Raleigh; Best, Elizabeth Ann, Goldsboro; Blankenship, Marjorie Allen, Charlotte; Boland, Elizabeth Anne, Burlington; Boone, Evelyn Carole, Scotland Neck; Bradshaw, Jettie Rea, Gastonia.

*Row five:*

Byrd, Barbara Katherine, Durham; Callahan, Betsy Jean, Baskerville, Va.; Calloway, Rebecca Anne, Concord; Carpenter, Phyllis Lucille, Kinston; Carr, Edna Frances, Plymouth; Carson, Marianne, Greensboro; Caudle, Annette, Peachland.

*Row two:*

Andrews, Gladys Karen, Fuquay Springs; Bailey, Barbara, Wilmington; Bailey, Joyce Ann, Benson; Ball, Betty Joan, Scotland Neck; Barbour, Jennie Ruth, Dunn; Barbrey, Anne Jane, Clinton; Barnhardt, Rebecca, New Bern.

*Row four:*

Bristol, Myra Clarissa, Edisto Beach, S. C.; Brock, Jo Bond, Conway, S. C.; Brown, Betty Carolyn, Florence, S. C.; Bryan, Sallie Margaret, Newton Grove; Bryson, Helen, Rome, Ga.; Burkhalter, Frances LouJean, Nashville; Burns, Joyce Anne, Siler City.



*Row one:*

Causey, Joyce Anne, Tarboro; Clemmons, Hazel Kathleen, Supply; Cochrane, Anna Katherine, West End; Colby, Helen Eilcen, Charlotte; Cook, Grace Sheldon, New Bern; Cottle, Kathryn Jane, Rose Hill; Cottrell, Ruth Ernestine, Lenoir.

*Row two:*

Cromartie, Patricia Blanche, Dunn; Currin, Katie Lee, Roxboro; Davis, Ellen Ruth, Erwin; Delbridge, Mary Elizabeth, Spring Hope; Dickens, Mary Cobb, Nashville; Doherty, Nancy Ellen, New Bern; Dorman, Edith Rose, Smithfield.

*Row three:*

Drake, Sallie Linn, Washington, D. C.; Faires, Kathryn Jane, Charlotte; Fisher, Virginia Seleta, Whitakers; Forbes, Wilma Jean, Morrisville; Getzen, Dolly Florence, Dade City, Fla.; Goodyear, Sara Lloyd, Tryon; Green, Barbara Madeline, Philadelphia, Pa.

*Row four:*

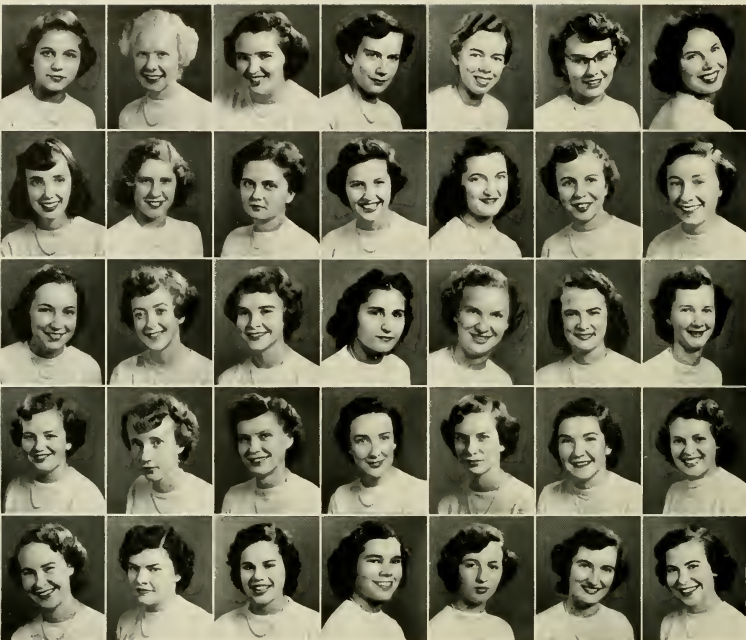
Greene, Cora Ann, West End; Griffin, Lou Ann, Shawboro; Haithwaite, Sally Joan, Rome, N. Y.; Hall, Nancy Mae, Roxboro; Hall, Nina Jean, Lexington; Hall, Phoebe Anne, Mt. Ulla; Hamrick, Galena Ann, Boiling Springs.

*Row five:*

Harrill, Barbara Caroline, Lincolnton; Hinson, Dorothy, Fair Bluff; Hinson, Vernon Lee, Fair Bluff; Ingram, Margaret McNeil, Lilesville; Johnston, Kay Frances, Nashville; Jones, Anne Amelia, Polkton; Joyner, Celia Frances, Rocky Mount.



# The Class



*Row one:*

Joyner, Georganne, Winston-Salem; Kelly, Sarah Virginia, Spencer; King, Helen Lina, Troy; Knight, Margaret Lowe, Whitakers; Lane, Mary Elizabeth, Camp Lejeune; Langdon, Sara Johanna, Monroe; Langston, Ruth Joyce, Newton Grove.

*Row two:*

Laxton, Ann, Durham; Leary, Lillian Webb, Edenton; McArthur, Margaret Marsh, Fayetteville; McConnell, Jean Ava, Raleigh; McGinnis, Nancy Carolyn, Ellenboro; McKay, Shirley Ann, South Mill; McLean, Beatrice Shirley, Maxton.

*Row three:*

McLean, Margaret Ophelia, Maxton; McNeil, Martha Jane, Camp Lejeune; Mahler, Cynthia Ann, Tarboro; Mallos, Georgia Ann, Raleigh; Mangum, Sarah Gene, Stem; Martin, Mary Earline, Eagle Springs; Mayton, Gladys Daphine, Durham.

*Row four:*

Melvin, Lela Mae, Harrells; Melvin, Patty Ray, Harrells; Mitchell, Lucy Virginia, Youngsville; Moore, Betty Frances, Spencer; Moore, Dora Ellen, Belmont; Moore, Mary Dare, Salisbury; Murphy, Patricia Westbrook, Asheville.

*Row five:*

Murray, Helen Jane, Burgaw; O'Neal, Billie Jean, Wilmington; Overton, Martha Louise, Hendersonville; Owen, Edna Lou, Roseboro; Patterson, Frances Jean, Kearsville; Peterson, Mona Blanche, Wilmington; Peterson, Sandra Jean, Clinton.

*Row one:*

Porter, Betty Jane, Jefferson; Prince, Joyce, Raleigh; Pruitt, Rose Marie, Raleigh; Riddick, Lula Carolyn, New Bern; Royster, Mary Louise, Shelby; Rucker, Emma Sue, Shelby; Rudisill, Jan Deloris, Lincolnton.

*Row two:*

Salmon, Emily Anne, Rome, Ga.; Scarborough, Leah Olive, Mt. Gilead; Simmons, Mary Alice, Roseboro; Small, Mildred Ann, Edenton; Smithwick, Velma Dwaine, Ponzer; Sneed, Effie Irene, Wilmington; Snow, Martha Caroline, Raleigh.

*Row three:*

Spell, Alice Johnson, Clinton; Spence, Sara Jane, Greensboro; Spencer, Evelyn Gertrude, Raleigh; Stanley, Vivian Delores, Clarendon; Staples, Lorna Lee, Belcross; Stephens, Joyce Lynn, Whiteville; Strickland, Doris May, Supply.

*Row four:*

Suiter, Mary Jo, Ahoskie; Sylvester, Virginia Nannette, Elizabeth City; Thomas, June Carolyn, Raleigh; Triplett, Gwyn, Lenoir; Tyson, Anna Ruth, Farmville; Upchurch, Rebekah Williams, Raleigh; Walker, Marjorie Jean, Gastonia.

*Row five:*

Weaver, Arelia Ann, Hopewell, Va.; Weaver, Sarah Page, Raleigh; Wiggins, Ruby Doris, Fayetteville; Wiggs, Hortense, Smithfield; Williams, Lois Ann, Clarendon; Wood, Carolyn Marie, Troy.



## Scenes of '51



Class Day; Swimming; Dot Cutts, May Queen; Crowning the King of Play Day (Mr. Simmons); Dr. Cooper in Commencement Recital; Faculty vs Students in Softball on Play Day; Yes, it rained on May Day.



Athletics

# Athletic Association



SALLY MASSEY  
*President*

The Meredith College Athletic Association has as its aims the development of a sound mind in a sound body, the promotion of happiness through health, the development of fair play and good sportsmanship, and the promotion of skills in wholesome leisure time activities.

The membership of the Athletic Association consists of the entire student body, with a board of twenty members, chosen for knowledge of, and proficiency in, the various sports. Miss Doris Peterson, Director of Health and Physical Education, Miss Phyllis Cunningham and Mrs. Katherine Adams, instructors in Physical Education serve as faculty advisers.

Besides conducting a full program of competition in the many seasonal sports, the A.A. also sponsors such all-campus projects as the Monogram Club, Palio, Stunt Night, Christmas Caroling, The Folk Dance Concert, Faculty-Student Play Day, Posture Week, the Corn Huskin' Bee, the Horse Show, and May Day.





MABEL JOHNSON  
*Archery Tournament*



JOYCE BAILEY  
*Freshman Hockey Stick*

## A. A. Awards



SHIRLEY CLIATT  
*Horsemanship*



HOPE HODGES  
*Cunningham Trophy and Best-All-Round Athlete '51*

# Hockey



CHAMPION



FITZGERALD

MANAGER  
BONNY MORGAN



MORGAN



GODFREY



COVINGTON



HOUSE



WILLIAMSON



MASSEY



PACE



LOVELL



FRANCIS

# Softball 1951





# Basketball 1951



# Soccer



PACE



McRACKAN

MANAGER  
B. A. ALDRIDGE



ALDRIDGE



LOVELL



FRANCIS



CHAMPION



JAMES



FITZGERALD



GODFREY



SALTER



McRACKAN



Monogram Club  
PATSY SPIERS, *President*



Swimming  
DOTT MILLER, *Manager*

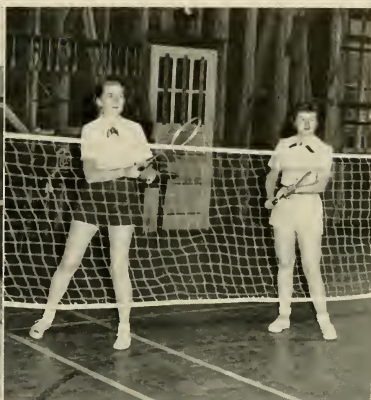


Archery  
BETTY LANE, *Manager*



## Tennis

MARY JEAN WEST, *Manager*



## Badminton

ADELE BUENING, *Manager*



## Folk Dance

KATHERINE JAMES, *President*



## Hoof-Print Club

### OFFICERS

NANCY JOHNSON . . . . .	<i>President</i>
JANE SEATE . . . . .	<i>Vice-President</i>
SALLY DEAN . . . . .	<i>Secretary</i>
LILLIAN WOOTEN . . . . .	<i>Treasurer</i>

"Love me, love my horse." This is the unwritten motto of each member of the Hoof-Print Club. In their pine-paneled club house they stay busy the year round, planning wonderful trips through the scenic bridle-paths that surround the college. In the fall the club of some twenty-five members sponsors a gymkhana and in the spring, a horse show. Other activities include participation in the Palio Parade and a delightful breakfast ride given by Mr. Zeno Martin.

The inspiration of the Hoof-Print members is their sponsor and instructor, Mrs. Miriam T. Hitt.



Activities  
Organizations

# Student Government Association



MARIE EDWARDS  
*President*

Democratic campus living is the goal toward which the Student Government Association of Meredith College directs its efforts. With a finger on the campus pulse, the council attempts to anticipate needs, and works towards the understanding and possible integration of all college life.

This year has seen a re-emphasis on the honor code and its operation in all phases of college experience. A special half-week was set aside for discussions and for talks from visiting speakers. Open student body meetings, in which problems and interpretations of rules were freely discussed, have given a feeling of unity to the campus.

Each week the council has met in the new student government room. House Council meetings and office hours during which suggestions can be voiced precede the regular meeting time. Meetings with the Faculty Committee on Student Government have brought about a sharing of interpretations and viewpoints of student matters.

An addition to the membership of the council this year has been the Chairman of Social Standards, whose work is the promotion of a well-rounded social life on the campus. Co-operating with near-by colleges, the chairman arranges for attendance of Meredith girls at such functions as the Wake Forest football game, the State College dorn dances and pep rallies, and for "get-togethers" at the recreation center. A still more important phase of her work is looking into the needs and aims of all extra-curriculum activities.

The Student Government Association is the voice of the students. Each member of the campus family must apply to her life the principles underlying Meredith; each member of the council must feel the interests and needs of the campus she represents. Student Government reaches out into all phases of the college community and seeks to bring the integration of Christian harmony into campus life.



# Freshman and Transfer Counselors

"Oh dear, what bewildering world have I stepped into?" This question of beginning students at Meredith soon changes to "College is so much fun! How could I ever have been so confused!"

One of the reasons for this change is the work of the freshman and transfer counselors. On their arrival, the new students are greeted by their counselors, who continue to guide them through Orientation Week. From that time, the work of the counselors branches out into personal visits during the year, in addition to the regular monthly meeting. Such topics as the honor code, social graces, Meredith traditions, and vocations are discussed.

Our main wish and reward is that we have done our part to make the ideals of Meredith theirs.



ANNE CREECH  
*President*



## Baptist Student Union



MARY EVELYN BROWN  
*President*

The Baptist Student Union of Meredith College is composed of all Meredith students who are active in church life. The union has as its steering committee an executive council, which, in co-operation with the Director of Religious Activities, plans and presents a program providing opportunities for worship, study, and action. Vespers and Family Altar provide opportunities for worship; study groups on the campus and in the Raleigh churches, opportunities for individual growth; and the missionary organization, the Y.W.A., opportunities for action. Once each year leaders in Christian living are invited to the campus for what is known as Religious Focus Week or Religious Emphasis Week. The purpose of this week is to deepen the spiritual life of every individual on the campus.

The Baptist Student Union is using for its theme in 1951-1952 "Abundant Living in Christ," with the hope that Meredith students will feel its urgency and will respond with Christ-centered lives.





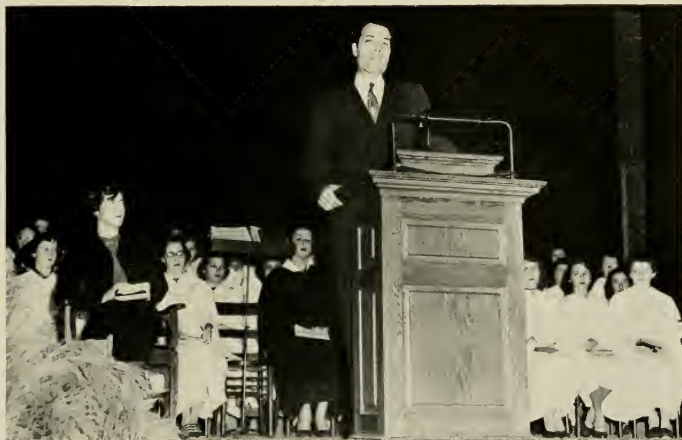
## OFFICERS

(Baptist Student Union Council)

MARY EVELYN BROWN	.....	President
JEAN DULA	.....	1st Vice-President
LOUISE STEWART	.....	2nd Vice-President
MARY ANN WESTBROOK	.....	3rd Vice-President
DORIS ALLEN	.....	Secretary
SYLVIA DEANS	.....	Treasurer
DOROTHY THOMAS	.....	Y.W.A. President
MARTHA STALLINGS	.....	Sunday School Director
JANET STALLINGS	.....	Training Union Director
JEANETTE LEOPARD	.....	Publicity Editor
DOROTHY HAMPTON	.....	Publicity Artist
MARJORIE BARNES	.....	Music Chairman
LUCY ANN LIDDY	.....	Arrangements Chairman
BETTY JO WELCH	.....	Program Chairman
BILLIE R. PRUYN	.....	Director of Religious Activities



MAKING BIG PLANS



RELIGIOUS EMPHASIS WEEK

REV. J. C. HERRIN



OFF TO CHURCH



VESPER TIME



## The Philaretia Society

### PHILARETIAN OFFICERS

BETTY JO SMITH . . . . .	<i>President</i>	META MAE WILLIAMS . . . . .	<i>Secretary</i>
NANCY HOUSE . . . . .	<i>Vice-President</i>	BOOTSY RENFRO . . . . .	<i>Treasurer</i>
ELINOR AVERRE . . . . .	<i>Sergeant-at-Arms</i>		



BETTY JO SMITH  
*President*

"Welcome" signs and Phido, our mascot, were on hand to greet the freshmen when they arrived last fall. A few days later, the Phi Bonfire was given at the Hut with the State Sigma Chis furnishing special entertainment for the evening. Another highlight of the week was the Phi Fashion Show, which introduced our old members to the new students. This week was no sooner ended than Rush Week was upon us. The activities of rush days consisted of waking up the freshmen with Phi songs, giving out favors, illustrating the story of "Purple Locks and the Three Bears," serving Phi Juice, providing the Supper Club entertainment, and forming the Phi shield by candle light. The "Great Day" finally arrived, and the Phis won for the second consecutive year.

Our year has been a very eventful one, with teas, square dances, lectures, making new draperies for the hall, and business meetings. Old and new students alike have enjoyed participating in society activities this year.

May our motto "Plain living and high thinking" serve those who stay, as well as it has served those of us who go.



## The Astro Society

### ASTROTEKTON OFFICERS

BARBARA SCHELLER . . . . .	<i>President</i>	MIRIAM ALLEN . . . . .	<i>Secretary</i>
ADELE BUENING . . . . .	<i>Vice-President</i>	CELIA WELLS . . . . .	<i>Treasurer</i>
CHARLEEN SWANZEY . . . . .	<i>Sergeant-at-Arms</i>		

"He builds too low who builds beneath the stars" has always set the standard for the Astrotekton Society. Our motto is a challenge to every member—not to win or lose—but a challenge to do her best for Meredith, for her society, and for herself.

Rush Week is a necessary part, but only a part, of the activities of the society. Though we treasure the memories of ringing cheers, morning serenades, and a burning star, Rush Week was only a prelude to a wonderful year of working and playing under the ideals of Mother Astro. We ate spaghetti, got cricks at slumber parties, made Astro Hall into a "living" room; but we discovered a world not bounded by the limits of the Meredith campus nor of the year '52.



BARBARA SCHELLER  
*President*

# The Oak Leaves

## STAFF

JANE SLATE.....	<i>Editor</i>
DOTT MILLER.....	<i>Associate Editor</i>
BARBARA BONE.....	<i>Photography Editor</i>
JEAN MILLER.....	<i>Senior Editor</i>
JEAN WRENN.....	<i>Junior Editor</i>
DOROTHY PRICKETT.....	<i>Sophomore Editor</i>
JANE SPENCE.....	<i>Freshman Editor</i>
KATHERINE BARBEHENN.....	<i>Art Editor</i>

## BUSINESS STAFF

CAROLYN BRADY.....	<i>Business Manager</i>
LYNETTE ADCOCK, VENETIA STALLINGS, PATSY SPIERS	<i>Assistants</i>
ANNE MOORE.....	<i>Typist</i>

Smitty, Dott! Oh, for goodness' sake! Patsy, have you seen my little black notebook? How am I going to know when those pictures are to be made? Dr. Cooper is waiting for me now. Barbara, have you that picture schedule for



JANE SLATE  
*Editor*



me? You didn't know—"Why editors get gray?" (At this point I should like to offer my apologies to all those who think I have been unfriendly. I didn't mean to ignore anyone in the scramble; I really didn't see you.)

Anything happens on the average day of an editor who is trying to meet that first deadline. Suddenly she finds that there is a lull and the staff is sitting idly by. Bingo, the fireworks begin! How could this happen to us? Three days to get the copy in and nothing done. Get the midnight oil ready! Call the staff together and start the assembly line rolling! It certainly is nice to know we have a fine reliable staff.

Ours is not an easy job, but we of the staff feel it is a very rewarding one. Our ideas have been inspired by all of you; we have gone ahead because of a desire to give you an annual you like; our reward is your pleasure. We do hope that this, the '52 OAK LEAVES, has pleased everyone of you in some small way and, in pleasing you, has made a book that, while not perfect, will be for you a permanent reminder of your life at Meredith for the year 1951—1952. Last of all, we thank you for your help and co-operation—especially the unmentioned, who have given of their time and effort.



CAROLYN BRADY  
*Business Manager*



# The Acorn



JULIA PRESSON  
*Editor*

## STAFF

JULIA PRESSON	<i>Editor</i>
BARBARA HALE	<i>Assistant Editor</i>
JANE MURPHY	<i>Art Editor</i>
GRACE POW	} <i>Class Editors</i>
ALLEN HART	
PHYLLIS NOTTINGHAM	
CHARLEEN SWANZEY	
CELIA WELLS	

## BUSINESS STAFF

PATRICIA DULA	<i>Business Manager</i>
LOUISE HORN	<i>Assistant Business Manager</i>
JEAN MASON	<i>Circulation Manager</i>
LIB TAYLOR AND LUCYANN LIDDY	<i>Typists</i>



This year *The Acorn* has done something a little different—the size, the cover, and the paper of the magazine have all been changed. The staff sincerely hopes you have liked these changes.

But things like size and paper are just outward appearances. Essentially *The Acorn* has remained the same—an expression of what Meredith thinks and dreams and hopes. We of the staff have done our best to bring you the best of each type of expression, be it short stories, poems, book reviews, or art work. There's just one thing to remember: the staff doesn't write *The Acorn*. We merely collect material and see that it is all put together in a magazine. The real creators of *The Acorn* are you, the readers.



PAT DULA  
*Business Manager*





JEANNE RAMSEY  
*Editor*

# The Twig

## EDITORIAL STAFF

JEANNE RAMSEY.....	<i>Editor</i>
BETH MORGAN, DORIS PERRY, BOBBIE ADDY.....	<i>Associate Editors</i>
JOAN LANGLEY.....	<i>Managing Editor</i>
ELSIE WILLIAMS.....	<i>Photo Editor</i>
SALLY CLARK.....	<i>Art Editor</i>
SHELLEY MILLIGAN.....	<i>Music Editor</i>
RUTH ANN SIMMONS.....	<i>Sports Editor</i>
BETSY CANNADY, PHYLLIS NOTTINGHAM.....	<i>Columnists</i>
ALLEN HART, CELIA WELLS, LORETTA OGLESBY, KATHERINE WAYNICK, NANCY BROWN, ANN IPOCK, DOTT MILLER, LINDA SWANN, ALYCE EPLEY, SUSAN RATLIEF, DOT HELMS	<i>Reporters</i>
KATHLEEN CHRISCOE.....	<i>Chief Typist</i>
KATHERINE SITES, ALLENE BROWN, ALICE MILTON, JOYCE PHILLIPS.....	<i>Typists</i>
DR. NORMA ROSE.....	<i>Faculty Sponsor</i>





### BUSINESS STAFF

CARLENE KINLAW..... *Business Manager*  
DOT THOMAS..... *Advertising Manager*  
ALLENE BROWN, BERNICE LIMER, SHIRLEY WEST, MARGIE  
STEWART..... *Advertising Staff*  
SARAH PATE..... *Circulation Manager*

*The Twig*, a bi-weekly publication, is the official newspaper of the students of Meredith College. Providing an outlet for student and faculty opinions, recording current campus events, and presenting features of general interest are among the aims of *The Twig*.

The paper also serves as a teaching agent. Staff members learn how to co-operate with printers and advertisers and and to assume the responsibilities that business relationships require.

Lasting friendships are molded and experience is gained as the staff members participate in this journalistic activity.



CARLENE KINLAW  
*Business Manager*





## Nominating Committee

To carry out democratic procedure at Meredith, our elections are under the direction of the Nominating Committee, which is composed of the presidents of all the major organizations and classes, editors-in-chief of the publications, the college marshal, the Dean of Students and three faculty members chosen by the committee, with the Chief Counselor as chairman. This committee evaluates the qualifications of the nominees for all major campus offices, except class presidencies, before presenting them to be voted upon by the student body.

The Nominating Committee seeks to uphold democratic ideals in student election by sound election procedure and by careful consideration of candidates presented to the student body.

# Little Theatre

BARBARA COX HARPER . . . . . *President*  
ELLEN WESTMORELAND . . . . . *Vice-President*  
ELINOR AVERRE . . . . . *Secretary*  
BETSY CANNADY . . . . . *Treasurer*



BARBARA COX HARPER  
*President*

On stage or off stage, with the curtain up or down, the Little Theatre members continued their work unflinchingly in 1951-1952. The large number of students who participated in the major productions this year is evidence of the work being done by the Little Theatre. In the fall the members produced *Tonight at Eight*, four one-act plays, which included *They're None of Them Perfect*, by Sophie Kerr *The Stronger* by August Strindberg, *The Happy Journey* by Thornton Wilder, and *The Mousetrap* by William Dean Howells. With the coming of the spring, old ideas and new interests blossomed in the Little Theatre. *Ladies in Retirement* was presented by the college group, and *Alice in Wonderland*, by the faculty.

Membership in the Little Theatre is open to enthusiastic students who earn a place on the roll through participation in a major production. There are innumerable committees open to both experienced and non-experienced students. Work is carried on throughout the year in building sets,

in learning make-up, in acting, in doing publicity, costuming, and lighting. Not only does a real drama enthusiast earn full-fledged membership in the Little Theatre organization, but she also earns points toward membership in Alpha Psi Omega, the national honorary dramatic fraternity on the Meredith campus and the ultimate goal of all Little Theatre members.



# Little Theatre at Work



"The Mouse Trap"



"They're None of Them Perfect"

Backstage Crew at Work

# nd in Action



"The Stronger"

"The Happy Journey"

Making-up is Quite a Job, Eh, Dott?



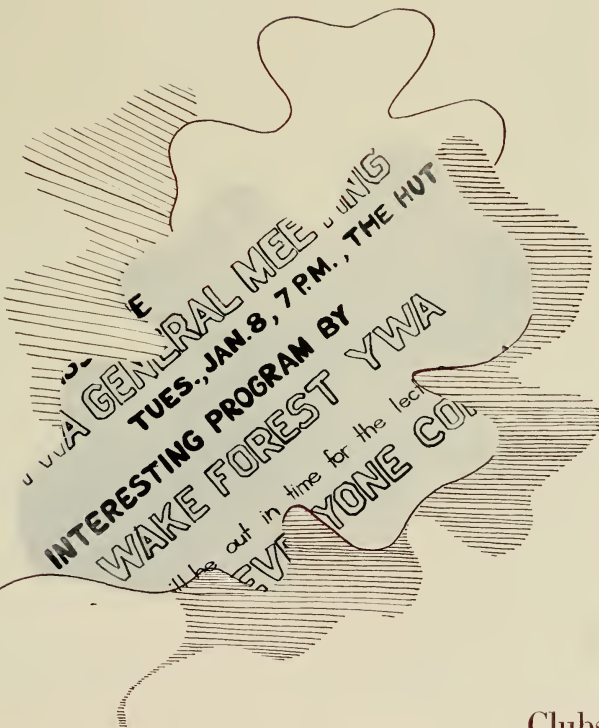
## Day Student Officers

BARBARA BALLENGER . . . . .	<i>President</i>	PAT EBERHART . . . . .	<i>2nd Vice-President</i>
CHARLOTTE TAYLOR . . . . .	<i>1st Vice-President</i>	DORIE ANN ATKINS . . . . .	<i>3rd Vice-President</i>

The two rooms designated for the Day Students provide a second home for many Raleigh girls, and even for some from other places.

The proverbial procrastination of the upperclassmen, the eagerness of the freshmen, the bright tempestuous lunch hour, the lockers crowded with precariously balanced books, and the new friendships between day students and resident students add up to a year of pleasant memories.

Because of our strenuous routine—getting up before sunrise, packing our lunch, dragging our books to a bus stop, shifting weight from foot to foot until our ride comes, receiving that “better-late-than-never” look from teachers, and plodding home—we can certainly say that there was never a dull moment. We who are leaving, look back on the years at Meredith with pleasure, and leave the things that go into making a successful college career to those who are left and to those who will come.



THE  
A GENERAL MEETING  
TUES., JAN. 8, 7 P.M., THE HUT  
INTERESTING PROGRAM BY  
WAKE FOREST YWA  
Be out in time for the lecture  
EVERYONE COME



## Education Club

MOLLY BRITT. . . . . *President*

JANE KING. . . . . *Secretary*

ANNE HOLLIS. . . . . *Vice-President*

ANNE REAGAN. . . . . *Treasurer*

Students today—teachers tomorrow. The Meredith Education Club, one of the largest clubs on our campus, seeks to bridge the gap between life as a student and experience as a teacher. The purpose of the club is to acquaint the student of education with aims, objectives, accomplishments, and materials of modern education so as to create in the future teacher a desire to raise the standards of modern education. Our prospective teachers enjoy this opportunity to participate in club activities, which are directed toward building more informed and well-rounded teachers.

Included in our program topics have been studies of several foreign educational systems, of visual aids in education, of mental health in the school, and of many other worthwhile areas concerning the field of professional education. One activity of especial interest was our annual Christmas party for children at the Methodist Orphanage. This year three dramatizations of children's stories were presented and enthusiastically received by our young visitors.

Always there is an emphasis upon the fact that successful teachers are teachers of boys and girls, rather than of mere subject matter.



# Home Economics Club

MARY JO SHAW . . . . . *President*      JEANNETTE LEOPARD . . . . . *Secretary*  
JANE LUTHER . . . . . *Vice-President*      JANE WILLIAMSON . . . . . *Treasurer*  
BETH MORGAN . . . . . *Reporter*

The members of the Home Economics Club chose the theme "Widening Circles" to guide them in their activities for 1951-1952. Believing that many fields of interest broaden the circle of living, they enjoyed and profited from a wide variety of projects throughout the year.

Club members with unusual summer jobs explained the joy and value of a useful occupation; there were programs on campus courtesy and better speech; and a fashion show presented in chapel re-emphasized the opportunities in the clothing field. Highlights for the year included a tea for the high school students, continued contacts with foreign friends, and, finally, the service of the Betty Lamp, with the induction of the seniors into the American Home Economics Association, all of which added a wide ripple to the club's circle of hope for the future.





## Canaday Mathematics Club

ZETA MORTON . . . . . *President*

MILDRED SIMPSON . . . . . *Secretary-Treasurer*

JEAN MASON . . . . . *Vice-President*

CAMILLE THOMAS . . . . . *Reporter*

A high school math teacher once said, "Only the brave girls take math." The members of the Canaday Math Club are proving they are not sissies! The interest they have shown in the activities of the club—visiting the State College Statistics Laboratory and the Morehead Planetarium—have manifested that they are putting up a good fight to equal or surpass their brothers in the field. One of the most interesting discussions of the year concerned the many and varied paths a math major can take.

The purpose of the club, to promote interest in mathematics and to provide information on current applications, has been realized in the activities of the club for the year.

# Barber Science Club

JANE DILLARD.....	<i>President</i>	MELROSE CANADAY.....	<i>Secretary</i>
SHIRLEY CLIATT.....	<i>Vice-President</i>	JUANITA IPOCK.....	<i>Treasurer</i>
PENINA BOWDEN.....	<i>Reporter</i>		

If your knowledge of a camera is meager indeed, or if you have never peered at a live starfish, the Barber Science Club can offer you new experiences.

During the year we hear talks by outside speakers and by our own students, which acquaint us with late developments in science. We also take pictures and develop them in our own dark-room. We enjoy a party at Christmas and, in the spring, a picnic honoring the members of the club who are seniors. Field trips have included a visit to the Planetarium at Chapel Hill and tours of the hospital and of the medical school at Duke University.

In the spring we look forward to the trip to the Duke University Marine Laboratory in Beaufort, North Carolina, where we collect and photograph such marine plants and animals as green and red seaweeds, ghost crabs, and large jellyfish.

Members of the club are majors in science and those who elect advanced science courses. Through its varied activities, the club endeavors to give its members a better knowledge and understanding of their environment.



# International Relations Club

MARTHA HOLLAND . . . . . *President*      BARBARA SCHEITLER . . . . . *Vice-President*  
FRANCENE KING BARBER . . . . . *Secretary-Treasurer*

The International Relations Club has a definite purpose on our campus. Although we do not consider ourselves rivals of Eleanor Roosevelt, we do try to foster international good-will, as well as study America's relations with other nations.

Our programs include informal talks by guest speakers, panel discussions, and various other forms of entertainment. The most important and exciting events are the exchange meetings with the International Relations Club chapters at Wake Forest, Shaw, Duke, State, and other colleges. The climax of our year comes in May when we have a meeting and picnic with the Student League of Women Voters.

Under the able leadership of Dr. Wallace, our sponsor, we have had a most successful year.





## Student League of Women Voters

LYNETTE ADCOCK . . . . . *President*      GRACE POW . . . . . *Vice-President*  
 ELEANOR HENRY . . . . . *Secretary-Treasurer*

The Meredith Student League of Women Voters was organized on the campus in the spring of 1930 with the purpose of encouraging a more intelligent interest in local and national affairs, and of helping each member to become a better citizen. Each year representatives of the group are elected to the North Carolina State Student Legislature, before which they present one or more bills. The League also encourages Meredith students to practice absentee voting and in other ways attempts to help them become capable voters, lawmakers, and office-holders.

# Tomorrow's Business Women

KATHLEEN CHRISCOE.....*President*

EDITH BRADLEY.....*Vice-President*

DOROTHY STELL.....*Secretary*

JANNE DAWSON.....*Treasurer*

DORIE ATKINS.....*Program Chairman*

REBECCA EDGE.....*Reporter*

Tomorrow's Business Women seeks to promote and to encourage interest in business education and business administration, and to develop those qualities which are needed for success in the business world.

This year, the programs, planned by Dorie Atkins, the program chairman, have effectively carried out the theme, "Enlightenment for Your Future." These programs have been varied through the co-operation of outside speakers, of a Wake Forest Business fraternity, by the student fashion show, and by the Christmas party in the Hut.





## MacDowell Music Club

LOIS PRITCHETT . . . . . *President*      ESTELLE WALKER . . . . . *Vice-President*  
 GLYNDORA BENNER . . . . . *Secretary-Treasurer*

Membership in the MacDowell Music Club is open to anyone who is interested in music and in the promotion of interest in music on the Meredith campus. Our programs consist of reviews of future concerts, discussions of current music events, and performances by visiting artists as well as by our members. Through our programs we strive to broaden our musical knowledge and to stay informed of coming music events. The club is a member of the North Carolina Federation of Music Clubs and is under the sponsorship of Mr. Stuart Pratt.







## MENC

BARBARA MORRIS.....*President*      LOUISE STEWART.....*Secretary-Treasurer*

The Meredith Chapter of the Music Educators' Conference is a comparatively new organization on our campus. During the spring term of 1951 those girls interested in music education organized themselves under the direction of Miss Forrestine Whitaker, music instructor and head of the Public School Music Department. The group includes, primarily, girls who are student teaching or planning a teaching career in the field of music. This year the MENC has sponsored several panel discussions at which authorities in this field of teaching have been guest speakers. It is in such an organization that ideas and problems in the music teaching profession are discussed and considered.

# Freeman Religion Club

MARTHA STALLINGS . . . . . *President*      RUTH BARNES . . . . . *Secretary*  
LUCYANN LIDDY . . . . . *Vice-President*      JANET STALLINGS . . . . . *Treasurer*  
JEAN BATTEN . . . . . *Publicity Chairman*

In endeavoring to promote its purpose of studying the problems, techniques, and current trends in the field of religion, the Freeman Religion Club has placed emphasis this year upon Christian missions, religious literature, and the place of Christian young people in the world today.

At our first meeting, Mrs. Flora Freeman of India increased our knowledge of the missionary work done in that country as she spoke concerning the relation of Christianity to Hinduism. She concluded by displaying the various costumes worn in India. Next we turned our thoughts toward China as Lillian Lu, one of our own students, brought us some information about her native land. Later Dr. Hubert Poteat of the Latin Department at Wake Forest College presented his reading of *Green Pastures*. The entire student body was invited to this meeting as our guests. Beverly Neilson, a 1950 graduate of Wake Forest College, enlarged our vision of the religious work offered young people by relating to us her experiences as State Baptist Student Union summer missionary to Hawaii.





## “Mrs.” Club

CAROLINE CHILDRESS . . . . . *President*  
 PHYLLIS STRICKLAND . . . . . *Vice-President*

MARTHA MARTIN . . . . . *Secretary*  
 VIRGINIA MCGRAHANAN . . . . . *Treasurer*

The membership of the “MRS.” club is naturally limited to the select few who are lucky enough to have that certain ring on the third finger of the left hand. In the monthly meetings we shared budget hints, problems, time-saving ideas, and recipes, which we immediately took home to try out on our husbands.

At our socials, we had wonderful times getting to know the husbands better, eating our own concoctions, playing bridge, and just gabbing. The highlights of the year were the Christmas party, which featured a visit from Saint Nick, the hen parties, the get-together following the Junior-Senior Banquet, and the tea given for all Meredith “engages,” our prospective members.

We feel that this club will be a permanent campus organization because—marriage is here to stay!



## Colton English Club

JEAN JOYNER.....	<i>President</i>	ALLEN HART.....	<i>Browsing Room Chairman</i>
MARILYN MORRISSETTE.....	<i>Vice-President</i>	PHYLLIS NOTTINGHAM.....	<i>Reporter</i>
BARBARA HALE.....	<i>Secretary-Treasurer</i>	DR. JULIA H. HARRIS.....	<i>Faculty Sponsor</i>

"I wish I knew more about contemporary writers." "Some modern poetry is as hard to interpret as modern art." "I should like to hear some of the poetry and prose written by our own students!"

Statements such as these heard on the Meredith campus caused the Colton English Club to choose modern literature as its subject of study for this year. Student interest in the subject was proved at our first meeting when the Julia Hamlet Harris Browsing Room, where our meetings are held, was filled to overflowing, and our membership was more than tripled! All year the members of the club remained enthusiastic and returned to hear programs on modern literature given by members of the faculty, by students, and by visiting speakers. At one of our meetings Meredith students and their friends read some of their own poetry.

The Colton English Club this year also sponsored several "Book Teas." At these we came together to discuss books—both modern and classic—which we had read recently, and we all left inspired to read some of the exciting books discussed!

# The German Club

CAROLYN BRADY . . . . . *President*      MELBA BARBOUR . . . . . *Vice-President*

MIRIAM ALLEN . . . . . *Secretary-Treasurer*

The German Club is only one year old, but its members feel that it will grow in the future as it has grown in its initial year. Membership is open to all who are studying, or have studied, German. The club seeks to create and establish a broader interest in the German people and their language. Our programs include participation in German songs and folk dances, talks by guest speakers, and movies. The most enjoyable event of the year is our Christmas party at the Freunds' home, representing a typical German Christmas.





## Granddaughters' Club

BARBARA BONE . . . . . *President*

MARY ANN CASEY . . . . . *Vice-President*

NANCY JOHNSON . . . . . *Secretary*

CELIA WOOD . . . . . *Treasurer*

DORIS KNOTT . . . . . *Reporter*

CATHERINE McRACKAN } *Co-Chairmen of*  
 REBECCA McRACKAN } *Needlework Guild*

In 1930, a small group of girls found themselves "uniquely distinctive" from the rest of the student body and banded together to form the Granddaughters' Club. Since that date, every year brings a new crop of girls who recognize their right to membership in this club. That privilege comes only when a girl's own mother or grandmother was a student at Meredith. While there is always interest in the heritage each girl brings from her mother to the club and Meredith, the Granddaughters do not confine themselves to social gatherings for talk: they sponsor many interesting and educational programs throughout the year, one of which is the collection, in co-operation with the Needlework Guild of clothes, or contributions to buy clothes, for needy children.

This year the club is proud of a further distinction—it claims its first great-granddaughter, Betsy Brooks McGee, whose mother and maternal grandmother both attended Meredith.

# Sociology Club

HONORE PARKER . . . . . *President*  
LOUISE HORNE . . . . . *Vice-President*

BETTY FINKLEA . . . . . *Secretary-Treasurer*  
PAT DULA . . . . . *Reporter*

"Study to Serve" expresses the motivating spirit behind the Meredith Sociology Club. We like people, and our interest centers in working with them and for them. The Sociology Club gives us a chance to understand people, for in our meetings we study various cultural backgrounds, share experiences from social work, and join in discussions led by well-known sociologists. Some club members serve in local agencies while students, and through this study, our aim ultimately becomes "De-part to Serve."

Wherever people are found, the social side of life is important, and our club does not overlook this fact. Joint meetings are held with the sociologists of State College, Wake Forest, and of other nearby schools. This sociological theory is also put into practice at informal "Dutch" luncheons, the Christmas dinner, the April breakfast, and the May picnic.





## Psi Chi Club

ANN O'QUINN . . . . . <i>President</i>	SARAH THOMAS . . . . . <i>Secretary</i>
PATSY SPIERS . . . . . <i>Vice-President</i>	CAROLYN LITTLE . . . . . <i>Treasurer</i>

Are you dying to discover the underlying causes of your roommate's idiosyncrasies? Do you spend many perplexed moments trying in vain to learn the reasons for occasional quirks in the personalities of friends? Do you enjoy discussions on hypnotism, dream analysis, and other issues in psychology? Are you interested in the possibilities that psychology can offer you in the future? Then you, my friend, are the kind of creature that belongs, or should belong, to the Psi Chi Club!

We have, in the club, discussions on subjects such as the aforementioned discussions which follow naturally from interest aroused in the classroom. There are also reports on student projects, as well as demonstrations by members of the faculty and by outside speakers. Members of the staff at Dix Hill, the State School for the Blind, Duke University, and the State Woman's Prison have also helped to make our meetings a success. Additional interest is gained through informing visits made to the various institutions in the city.





Honoraries



## Sigma Alpha Iota

JEAN MILLER . . . . . <i>President</i>	JANE SLATE . . . . . <i>Treasurer</i>
BARBARA BONE . . . . . <i>Vice-President</i>	SHELLEY MILLIGAN . . . . . <i>Chaplain</i>
CAROLYN BRADY . . . . . <i>Secretary</i>	JOAN NEIGHBORS . . . . . <i>Sergeant-at-Arms</i>

Sigma Alpha Iota, a national professional music fraternity for women, emphasizes the fact that "life is short, but art is long." Members of our chapter, Beta Zeta, are music majors, chosen upon faculty recommendation, for excellence in scholarship, musical ability, and for a vital interest in music. Presenting capable musicians to the public, participating in public performances in our chapter chorus and vespers, and working in the music store are a few of our many activities. The fraternity, a national organization, offers its members social and professional contacts which aid them in enjoying a broader field of music.

# Alpha Psi Omega

BETSY CANNADY . . . . . *President*      RUTH ANN SIMMONS . . . . . *Vice-President*  
ELLEN WESTMORELAND . . . . . *Secretary-Treasurer*

Alpha Psi Omega, the national honorary dramatics fraternity, was organized to recognize those whose work in dramatics on the campus has been beyond "the line of duty." Membership in the Eta Nu chapter at Meredith is won when a student has made fifty points by working in the Little Theatre. These fifty points are given for exceptional work both on-stage and backstage, and to those who hold a certificate of membership the extra work is well worth the effort. For a real enthusiast, winning an Alpha Psi membership is not just hard work—it is the reward for those hours spent in making the footlights shine brighter on each opening night.





## Sigma Pi Alpha

BARBARA BALLENGER . . . . . <i>President</i>	DOTT MILLER . . . . . <i>Secretary</i>
GRACE AUTRY . . . . . <i>Vice-President</i>	JULIA PRESSON . . . . . <i>Treasurer</i>

The Phi Kappa Chapter of Sigma Pi Alpha seeks "to stimulate an interest in, and to acquire a more intimate knowledge of, the geography, people, life, customs, history, industries, and culture of foreign countries, and to make a contribution towards bringing about a better understanding between these countries and ours."

Membership is determined by scholastic achievement and interest in foreign languages.

The chapter has established the policy of four programs a year: a tea for foreign students in the educational institutions of Raleigh; a Christmas party with the local chapters of Sigma Pi Alpha; joint initiation with the Alpha chapter at State College; and a formal dinner with a talk on an international situation by a guest speaker.



Features



J. Miller, Adcock, M. Barnes, Stell

## Phi Marshals



F. King, Crenshaw, J. Fisher, Frye

## Astro Marshals



PEGGY POOLE

May Queen





ASHA FARRIOR

Maid of Honor



VIRGINIA McGRANAHAN



JANE LUTHER

## Senior Attendants

NANCY JO WALLIS



MARY ANN GODWIN

## Junior Attendants



JOANNE BROWN



ELIZABETH CRENSHAW

## Sophomore Attendants

MARGARET BRUNSON



JEAN McCONNELL

## Freshman Attendants

# Class Day '51





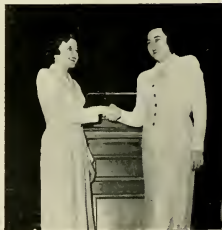
# The Candid Camera



The Meredith year of 1951-1952 started off like any other college year with freshmen arriving, looking just a little overwhelmed; with sophomores and juniors busy counseling and guiding. For some of us, though, this year began differently. The difference was subtle and yet it was there, like an undercurrent. For some of us this year was our last year at Meredith. We didn't quite realize it until Founders' Day, when the seniors marched down the aisle in caps and gowns — and we were the seniors.

Still the year advanced like the other college years we had known. Rush week came, and with it, scurrying groups of society members bearing gifts for freshmen and transfers; drowsy-eyed girls sloshing through the early-morning dew to sing under dormitory windows; beneath gala balloons and garlands of purple and gold crepe paper eating doughnuts at breakfast on Decision Day. But Decision Day brought a change—the Phi's won for the second time in as many years, something rather unusual in school annals.

Founders' Day produced the usual exuberance over no afternoon classes, the usual excitement





over the unfamiliar caps and gowns, and the usual settling down as Dr. Mary Lynch Johnson made the yesterday behind Meredith's today live again for us, and as Dr. Winston Pearce, pastor of First Baptist Church in Durham in quoting lovely words from Robert Frost made us realize our responsibilities.

After Founders' Day, the year sort of drifted along into deep autumn. Every Saturday the campus was deserted—since most of the girls were away cheering the eleven of the b. f.'s alma mater. Corn Huskin' Bee brought forth gap-toothed farmers in jeans, farmerettes with too much rouge on their cheeks and petticoat lace drooping an inch or so beneath hemlines. The faculty corn huskin' team was graced by an addition, the new faculty member from the Eronx (you can tell he's a Yankee—the man just can't shuck corn!).



Somehow or other Thanksgiving had rolled around, and we all journeyed homeward to partake of that "Home-cookin'." And we all came back with that stuffed look, the result of too much turkey and too many biscuits.

Then suddenly it was time for Christmas. The music that Elsie played at dinner was accompanied by the sound of silver striking glass, and the air rang with happy voices

shouting, "Two more days 'til vacation, and the bus will carry us

home!” There was the yearly excitement over the dining hall tree, and everybody felt a mad desire to pick the silvered berries destined for decorations just because Miss Lou’s little signs told us not to. We all dressed in our best for the formal dinner, and later changed to our



wo st (but warmest) to go caroling. We sang “God Rest You Merry, Gentlemen,” but nobody rested much, merry or otherwise, that night—if “they” say we can stay up all night, we’re gonna stay up all night!

After Christmas the time before exams was just too short for the amount of work we had to do. Furtive bathroom lights flickered late at night, and the lunch-line standees were a studious bunch. But finally exams were over, and the between-semesters holiday was all too short before we were back in the old grind again.

Second semester, as always, seemed to fly. Gradually spring came to the campus. Shouts of “Slide, slide!” drifted from the softball diamond; the pool was opened and members of swimming classes stood dabbling their toes in that co-o-ld water; a few hardy souls ventured out onto the porches in shorts and halters, determined to get an early start on sunbaths. This spring was marked by Palio and Stunt. Somehow it was harder to work on costumes, et cetera, with spring fever germs floating around in the air.



In February came the faculty presentation of *Alice in Wonderland*. We didn’t know that Meredith possessed such a talented faculty! The play was a tribute to Miss Mayes’ directing; as to the individual perform-

ances, we couldn't single out any one for special praise. Every member of the cast played his (or her) role to perfection, as attested by howls of laughter from the audience. Mrs. Kelman made a delightful Alice; the Blue Caterpillar valiantly smoked his/her hookah throughout the performance; the voice of the Queen shouted magnificently, if somewhat indiscriminately, "Off with his head!" the King, only slightly hen-pecked exhibited a polished courtly manner; the Gryphon and the Mock Turtle, the Mad Hatter, the March Hare, the drowsy Dormouse, the rotund Humpty-



Dumpty, the squeaky-voiced Cheshire Cat, the tearful Walrus, the red-nosed Carpenter, the plumpish and captivating Tweedledum and Tweedledee, the Duchess with her piglet-child, the pepper-slinging cook—all were masterpieces of hilarity. And what fun we had trying to decide which faculty member played which Wonderland inhabitant! "That can't be Dr. Harris saying 'I ain't done nothin' to nobody,' can it?" "I certainly didn't know Dr. Canaday could clog like that!" "I wonder if Miss Fleming got sick smoking that contraption for two hours?" These were typical comments. Our thanks went to the faculty—we hadn't laughed so hard and so long in ages!

May Day rolled around with Peggy and Asha making lovely rulers of the May, tra-la. The campus was crowded with visiting high school seniors.

Then came exams again, preceded by term papers, catching up on those assignments you somehow neglected to do and which had to be handed in, and last-minute cramming. Commencement and all the excitement it entails held sway, and suddenly, strangely, it was all over. Another year had gone. The college year 1951-1952 was only a memory.





beside the porches and near the class buildings; the day you actually got "A" on room check; the time Dr. Harris whispered, "Listen!" and a bird's silver notes floated into the midst of a discussion on the Aristotelian theory of tragedy; the riotous p. j. parties; Dr. Canaday's stentorian voice booming "Erase!" echoing through the Arts Building.

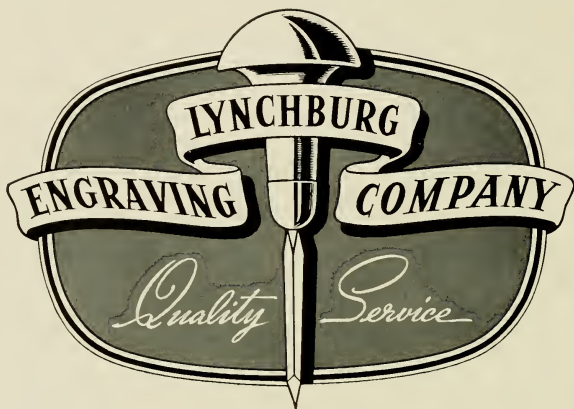
What will you remember?



Julia Presson



***THE END***



Designers and engravers of  
the South's finest school  
publications



LYNCHBURG, VIRGINIA

---

---

# WALLER AND SMITH

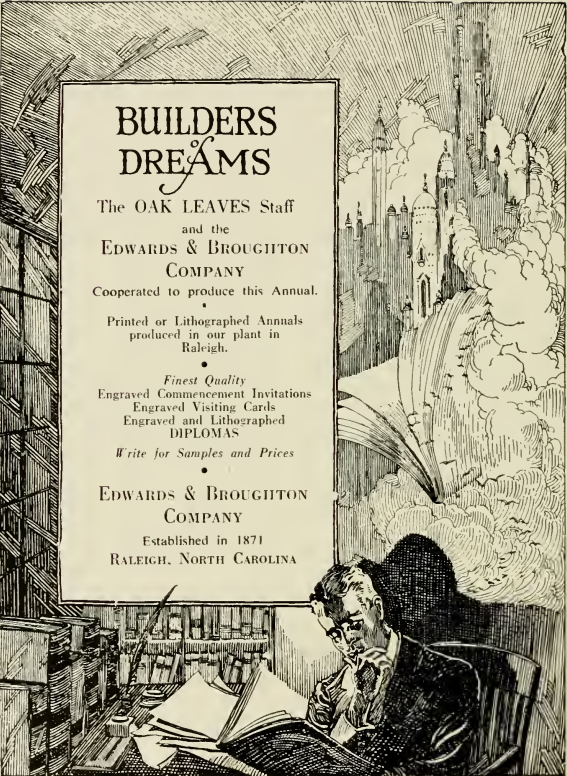
PHOTOGRAPHERS



OFFICIAL  
OAK LEAVES  
PHOTOGRAPHERS



12 East Hargett Street  
RALEIGH, NORTH CAROLINA



# BUILDERS DREAMS

The OAK LEAVES Staff  
and the  
EDWARDS & BROUGHTON  
COMPANY  
Cooperated to produce this Annual.

Printed or Lithographed Annuals  
produced in our plant in  
Raleigh.

*Finest Quality*  
Engraved Commencement Invitations  
Engraved Visiting Cards  
Engraved and Lithographed  
DIPLOMAS

*Write for Samples and Prices*

EDWARDS & BROUGHTON  
COMPANY

Established in 1871  
RALEIGH, NORTH CAROLINA



AUTOGRAPHS

AUTOGRAPHS

AUTOGRAPHS

AUTOGRAPHS







