

F 704
.B6 P5
Copy 1

Photo-Gravures

City of Blackwell

Oklahoma

F704
.B6P5

Photo-Gravures

Blackwell, Oklahoma

Published under direction of the Blackwell Commercial Club.



DIRECTORY

GEO. R. WILLET, PRESIDENT,
Proprietor Red Hot Implement Co.

E. P. BLAKE, VICE-PRESIDENT,
President Blackwell State Bank.

W. C. TETIRICK, SECRETARY,
Tetirick and Rose, Attorneys.

W. A. HAYS, TREASURER,
Wholesale and Retail Coal Dealer.

J. L. WAITE, *Capitalist.*

FRANK FOLTZ,
Supt. Blackwell Milling and Elevator Co.

G. E. DOWIS, *Cashier First National Bank.*

JOHN R. TATE, *Postmaster.*

WILLARD FOSTER, *Foster Mercantile Co.*

T. S. CHAMBERS, *Railway Contractor.*

J. W. WYMER, *Retired Farmer*

(FROM PHOTOGRAPHS TAKEN BY C. D. EDENFIELD)

Blackwell, Oklahoma

Metropolis.

Kay County.

Northeastern Oklahoma.

Settled September 16, 1893.

Population January 1, 1898,
800.

Population census, 1900, 2285.

Population May 1, 1903, 4250.

In natural gas belt.

School children enrolled, 1050.

Two fine school buildings—
Superintendent and 17 teachers
employed.

Seat Oklahoma State Baptist
College, costing \$30,000.00, 214
students enrolled.

First train of cars into Black-

well, March 1, 1898.

Now has three railroads—two
lines of Santa Fe and on main
line Frisco from St. Louis to
Vernon, Texas.

Two more proposed lines.

12 passenger trains in and out
each day.

Surrounded by finest agricultu-
ral and fruit country in the West.

Shipped 1261 cars wheat and
567 car loads flour during year
ending June 30, 1902, being 300
more cars of wheat than was ship-
ped from any other point in
Oklahoma.

Ample rainfall.

No crop failures in nine successive years.

We challenge comparison with any agricultural section of the world.

A city of wide-awake, progressive people, having an up-to-date system of water-works, owned by the city, electric lights and all modern conveniences.

More miles of cement and vitrified brick side-walk, and more pretty homes than any city of its size and age in the United States.

Fifty-two two-story brick business houses, and one two-story

stone, one three-story brick and several more are under construction.

The citizens of Blackwell have aimed to make the city a good place to live in AND WE HAVE SUCCEEDED.

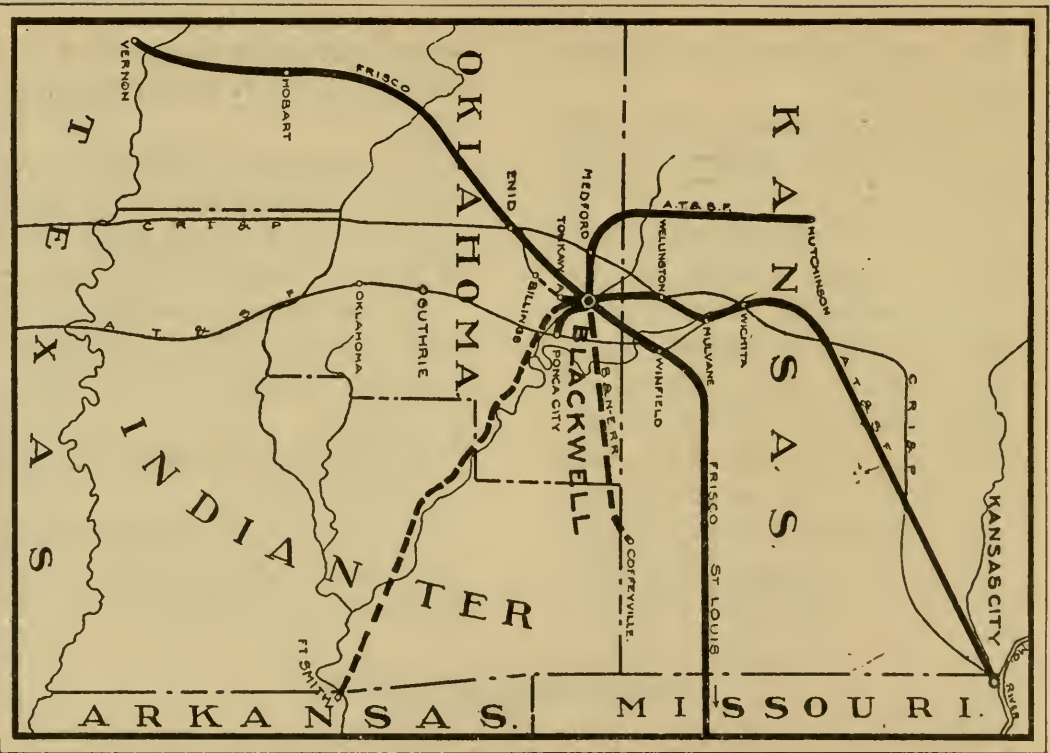
We want more people of the same kind. No "mossbacks" permitted to get off the trains at our depots.

COME and live with us. We will do you good.

For further information address Secretary, Commercial Club, Blackwell, Oklahoma.



LCCN: Q



RAILROAD MAP OF BLACKWELL AND VICINITY.



MAIN STREET, BLACKWELL



OKLAHOMA STATE BAPTIST COLLEGE



SECOND WARD SCHOOL

WATER WORKS
POWER HOUSE

HIGH SCHOOL

BLACKWELL ICE CO.

PLANT OF BLACKWELL
GAS AND MINING CO.

BLACKWELL CHURCHES



FIRST BAPTIST
CATHOLIC

PRESBYTERIAN
FIRST METHODIST EPISCOPAL

CHRISTIAN
UNITED BRETHREN

FIVE BUSINESS BLOCKS, BLACKWELL, O. T.

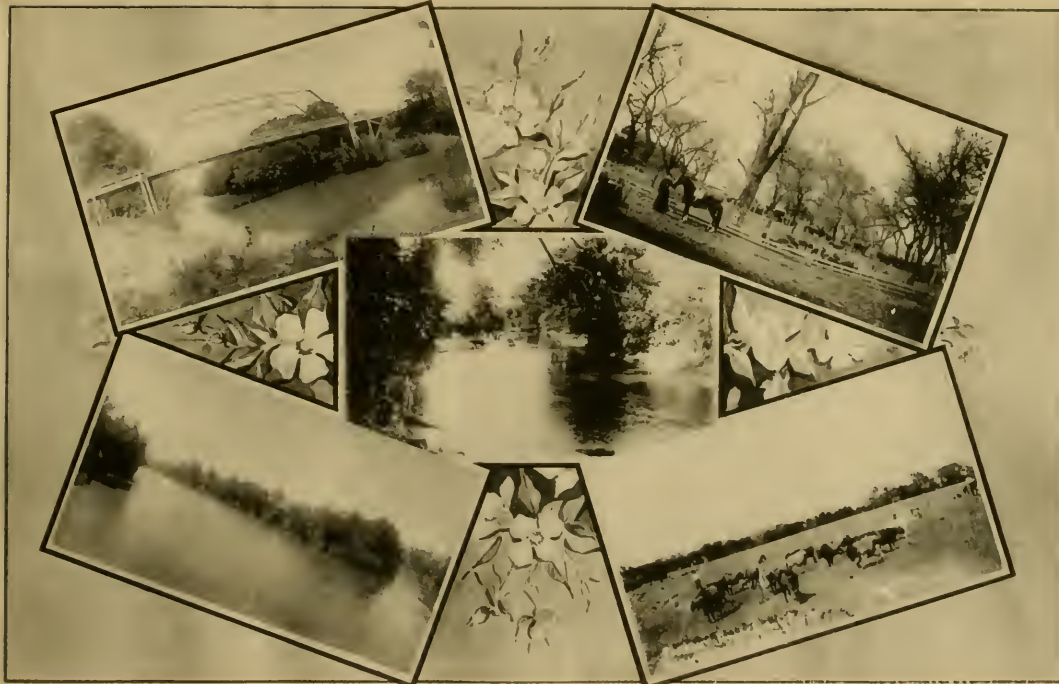


BEATTY BLOCK
KAY HOTEL BLOCK

FIRST NATIONAL BANK BLOCK

BARRETT BLOCK
FOSTER BLOCK

SCENES NEAR BLACKWELL



BRIDGE CHICASKIA RIVER
CHICASKIA RIVER

SCENE, CHICASKIA RIVER

FEED LOT, ROSS KELLY
CARSON STOCK FARM

RESIDENCES, BLACKWELL, O. T.



DE ALLAN LOWERY
W. S. PRETTYMAN

ED. L. PECKHAM
W. C. TETRICK

W. W. STEPHENSON
B. M. ANDERSON



DEPOT ST. LOUIS AND S. F. RY. CO.
DEPOT A. T. AND S. F. RY. CO.

BUILDING RES. CONSTRUCTION CO.
A. G. BARRETT DRY GOODS CO.

The Oklahoma Route



Fast, electric-lighted trains between Oklahoma points and Saint Louis,
Kansas City and the North and East.

All Cafe Cars and Dining Halls under management of Fred Harvey.

Full information as to rates, train service, etc., furnished upon
application to PASSENGER TRAFFIC DEPARTMENT,

Saint Louis

Frisco System

Experience teaches a dear school and her doors
Are ever open to him who finds therein
The only road to wisdom;
But the shrewd observer,
With his finger on the public pulse,
Buys "GLOBE," and profits at the expense of others.

GLOBE

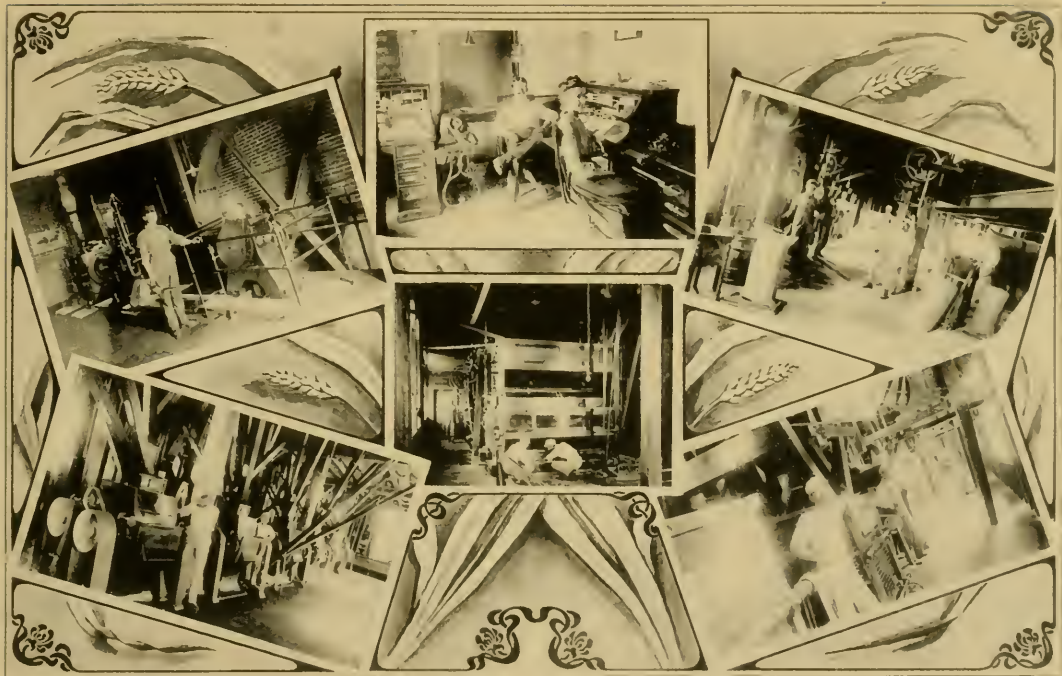
It's made in the mills on yonder page
By the foremost millers of the age.

BLACKWELL MILLING AND
ELEVATOR COMPANY.



BLACKWELL MILLING AND ELEVATOR CO.

INTERIOR VIEWS, BLACKWELL MILLING AND ELEVATOR CO.

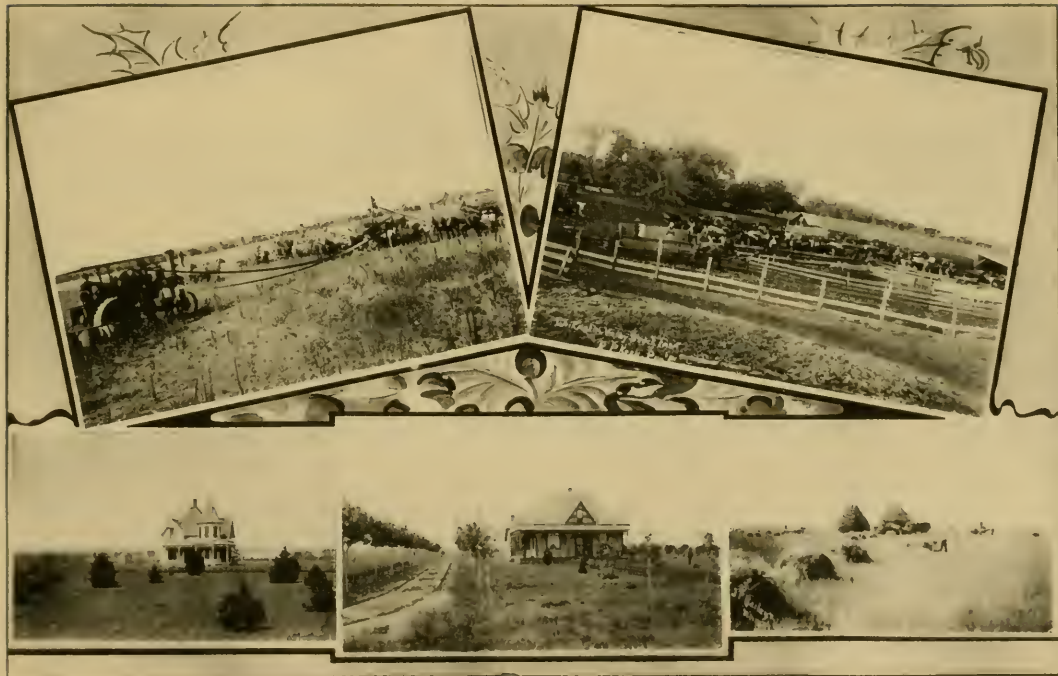


ENGINE ROOM
GRINDING FLOOR

OFFICE
REEL FLOOR

PACKING FLOOR
PURIFIER

FARM SCENES NEAR BLACKWELL.

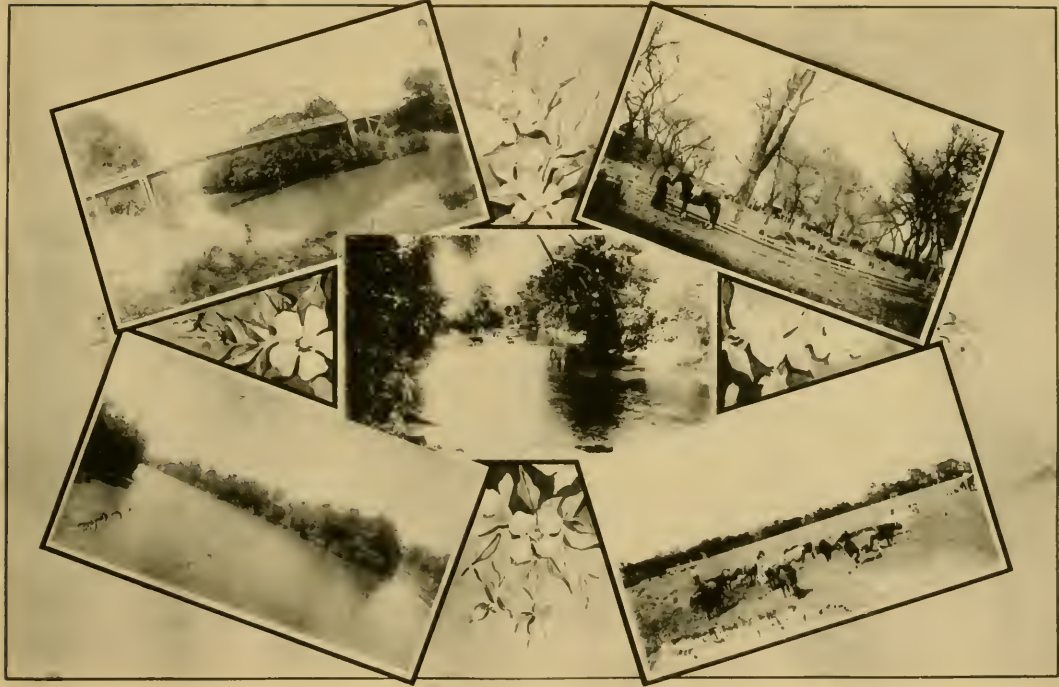


THRASHING SCENE NEAR BLACKWELL
CAPT. SHAW, 1 MILE FROM BLACKWELL

N. D. KISTLER, 3 MILES SOUTH

FEED LOT R. P. KERN, 3 MILES NORTHWEST
J. P. BAILEY

SCENES NEAR BLACKWELL



BRIDGE CHICASKIA RIVER
CHICASKIA RIVER

SCENE, CHICASKIA RIVER

FEED LOT, ROSS KELLY
CARSON STOCK FARM

F. V. ROWLAND & CO.

Immigration Agents for the

'Phone



No. 74.

Real Estate, Farm and City Loans and Insurance.
Rentals, Collections, Taxes Paid, Abstracts Furnished.

Correspondents Receive Prompt Attention.

BLACKWELL,

OKLAHOMA.

W. O. FLEMING & CO.

GERMAN AND ENGLISH

REAL ESTATE AGENTS,

Real Estate, Loans, Abstracts and Insurance.

Reference: Bank of Blackwell.

BLACKWELL,

OKLAHOMA.

G. B. Thompson,

Immigration Agent for the

Reference by permission
First National Bank,
Blackwell, Oklahoma.

✿ Santa Fe

REAL ESTATE AGENT.

Handle Bargains in both Kansas and Oklahoma.

BLACKWELL, OKLA.

J. H. YOUNGMAYER,

REAL ESTATE AND
LOANS.

Refer to Any Bank in City.

BLACKWELL,

OKLAHOMA

C. B. ANDERSON, President.

T. H. MILLER, Vice-Pres.

B. D. ASHBROOK, Secretary

Conservative Investment Company,

CAPITAL STOCK, \$50,000.00.

INVESTMENT BANKERS,

First mortgage loans on Northeastern Oklahoma farms a specialty. Discriminating investors will do well to write us for particulars. Letters answered promptly.

BLACKWELL

OKLAHOMA

BLACKWELL ICE COMPANY,

PAID-UP CAPITAL \$25,000.00.

Manufactures Pure Crystal Ice.

COLD STORAGE IN CONNECTION.

DAVE SCHONWALD, Manager

DO YOUR FRIENDS KNOW IT?

“SANTA FE”



Have you friends living in the East? Are they prosperous? Would they not do better in Oklahoma? Have they ever investigated? Do they know the Santa Fe sells round trip tickets to Oklahoma points the first and third Tuesdays of each month for only two dollars more than the fare one way? If they were told of these homeseekers' excursions, isn't it likely they would be interested? Suppose you send the names and addresses of your friends to the undersigned? **WHY NOT TELL THEM?** ☿ ☿ ☿ ☿ ☿ ☿ ☿

W. J. BLACK, G. P. A., A. T. & S. F. Ry., Topeka, Kas.

P. E. HALL, Agent, Blackwell, Oklahoma.

HOTEL MAINE,

J. B. BECK, Proprietor.



THE OLD RELIABLE COMMERCIAL HOUSE.

ONLY STRICTLY \$2.00 PER DAY HOTEL IN BLACKWELL.

PROMPT SERVICE. :: GOOD SAMPLE ROOM.

“Remember the Maine.”

BLACKWELL,

OKLAHOMA.

LIBRARY OF CONGRESS



0 016 089 784 3

