









Digitized by the Internet Archive
in 2012 with funding from

Federally funded with LSTA funds through the Massachusetts Board of Library Commissioners



Chauncey H. ...

COPYRIGHT 1901
BY J. ACHERSON

ALLERLEI

'03

VOLUME X



LASELL SEMINARY
AUBURNDALE, MASSACHUSETTS

1902

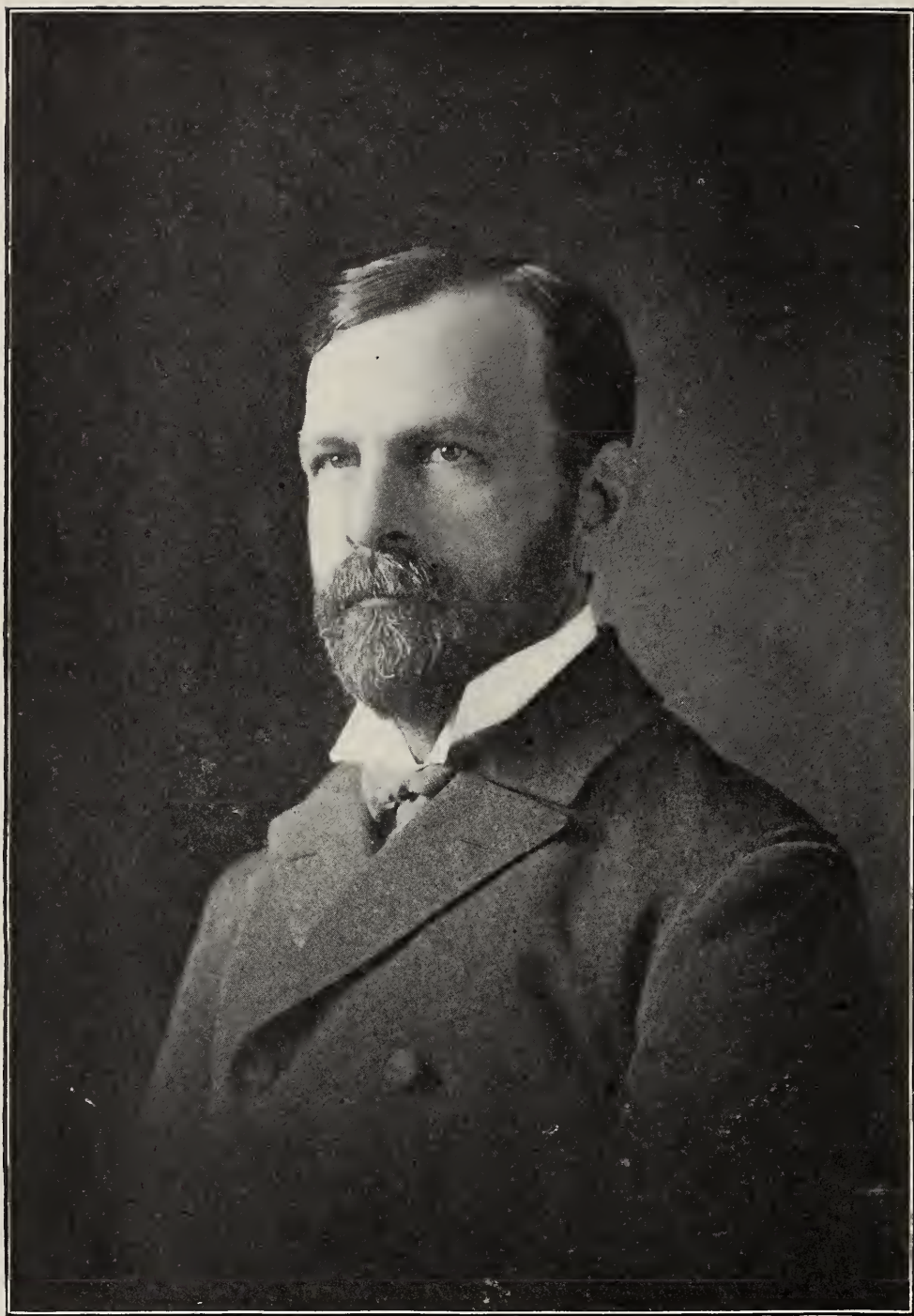
**FRANK WOOD, PRINTER
BOSTON.**

WESTMAN.



E.M. Sawyer

ALLVERVEI...1903.



To

George franklin Jewett, A. B.,

in appreciation of his great kindness and
help, this *Allerlei* is respectfully Dedicated

by the

Class of Nineteen Hundred and Three.

Preface.

AFTER two years of silence the Allerlei again speaks. That its vacation has served to strengthen, not weaken it, is the earnest wish of those who have given it tongue.

Much thought, consultation and anxiety have been spent on it. May it be received with as much delight, amusement and appreciation by the readers is the desire of the Junior Class.



Board of Editors.

Editor-in-Chief.

IDA M. MALLORY.

Associate Editors.

JOEL J. LAPOWSKI.

EDNA A. FRANK.

MARIE L. GIBERT.

LENA ARMSTRONG.

ISABELLA T. BLACKSTOCK.

EDITH M. EBERSOLE.

Business Manager.

BERTHA B. HAYDEN.

Assistant Business Manager.

CARRIE T. GEORGE.

Faculty.

CHARLES C. BRAGDON *Principal.*

“Mark the perfect man

GEORGE F. JEWITT, *Associate Principal; Bible; Constitution of United States; Political Economy.*

And behold the upright.”

CAROLINE A. CARPENTER, *Assistant Principal; Preceptress; English Literature; History; Manners; Dress.*

“Better a little chiding than a great deal of heart-break.”

WILLIAM J. ROLFE, LITT.D. *Shakespeare.*

“Fearless minds climb soonest unto crowns.”

F. ELIZABETH WILDER *Assistant in Shakespeare.*

“Our myriad-minded Shakespeare.”

HERBERT E. WELLS *Bookkeeping; Penmanship.*

“Guide the erring aright” [a-write].

LILLIAN M. PACKARD *Mathematics.*

“Blessed are the peacemakers on earth.”

GUY M. WINSLOW, PH.D. *Physical Sciences.*

“I do remember an apothecary,—
And hereabouts he dwells.”

CLARA M. AUSTIN *English.*

“Infinite riches in a little room.”

- EVELYN BATES *Latin; Greek.*
 “High erected thoughts seated in the heart of courtesy.”
- JEANNE LE ROYER *French.*
 “The word ‘rest’ is not in my vocabulary.”
- HERMINE C. STÜVEN *German.*
 “The artillery of her eye.”
- BLANCHE C. MARTIN *Reading; Expression.*
 “Speak freely what you think.”
- MARTHA E. RANSOM *Director of Physical Culture; Swimming.*
 “The wise for cure on exercise depend.”
- FLORENCE E. MARSTON *Assistant in Gymnastics.*
 “Hang sorrow! care will kill a cat,
 And therefore let’s be merry.”
- ANNIE P. CALL *Nerve Training.*
 “And mistress of herself though china fall.”
- LIEUT. CHARLES A. RANLETT *Military Drill.*
 “The apparel oft proclaims the man.”
 “We’ll have a swashing and a martial outside.”
- MARY L. NUTT *Care of Health.*
 “They are never alone that are accompanied with noble thoughts.”
- JOSEPH A. HILLS *Pianoforte.*
 “The very pink of perfection.”
- PRISCILLA WHITE *Voice Culture.*
 “A soul as white as heaven.”
- HELEN GOODRICH *Assistant in Voice Culture.*
 “Whose yesterdays look backward with a smile.”

- HENRY M. DUNHAM *Organ Harmony.*
 "All tongues speak of him."
- EDITH L. WINN *Violin; Guitar; Mandolin.*
 "The music in my heart I bore
 Long after it was heard no more."
- ARTHUR E. FRENCH *Chorus Singing.*
 "I pray thee, sort thy heart to patience."
- MARY A. MULLIKIN *Drawing; Painting.*
 "Charms strike the sight; merit wins the soul."
- ADELINE L. ADAMS *History of Art.*
 "So vast is art."
- MIRIAM N. LOOMIS, *Cooking; Demonstration and Practise; Experiment Hall; Home Sanitation.*
 "All the beauty of the place
 Is in thy heart and on thy face."
- ALICE A. CUTTING *Sewing; Dress-cutting.*
 "Style is the dress of thought."
- NELLIE B. DYER *Phonography.*
 "A modest manner fits a maid."



Senior Class.

Motto: "Lifting better up to best."

Class Colors: Yale Blue and White.

Class Flower: White Carnation.

Class Yell: Che-he, Che-ha, Che-ha, ha, ha,
'02, '02, Rah, Rah, Rah!

HONORARY MEMBER.

HENRY VAN DYKE, D.D., LL.D.

JOANNA DEERING	<i>President.</i>
LOTTA HEWSON	<i>Vice President.</i>
ANNIE MAE PINKHAM	<i>Treasurer.</i>
MABEL GOODWIN	<i>Secretary.</i>

Name.	Club.	Residence.
GRACE BULLOCK,	Lasellia,	<i>Pawtucket, R. I.</i>
ELLEN CHASE,	Lasellia,	<i>Los Angeles, Cal.</i>
LAURA CHASE,		<i>Los Angeles, Cal.</i>
BELL CLOKEY,	Lasellia,	<i>Decatur, Ill.</i>
JOANNA DEERING,	Lasellia,	<i>Saco, Me.</i>
CORNELIA DOUGLASS,	Lasellia,	<i>Troy, Ohio.</i>
BESSIE DRAPER,	S. D.,	<i>Lansingburgh, N. Y.</i>
GEORGIE DUNCAN,		<i>Bath, Me.</i>
FLORENCE EBERSOLE,	S. D.,	<i>Cincinnati, Ohio.</i>
BESSIE FULLER,		<i>Suffield, Conn.</i>

Name.	Club.	Residence.
MABEL GOODWIN,	S. D.,	<i>East Hartford, Conn.</i>
FLORENCE HAYDEN,	S. D.,	<i>Denver, Col.</i>
LOTTA HEWSON,	S. D.,	<i>Kansas City, Mo.</i>
HELEN HOWES,	S. D.,	<i>Blair, Neb.</i>
CATHERINE KENDRICK,	Lasellia,	<i>St. Louis, Mo.</i>
EDITH McCLURE,	Lasellia,	<i>Dayton, Ohio.</i>
HATTIE MCGREGOR,	Lasellia,	<i>Springfield, Ohio.</i>
ELLEN MCGREW,	Lasellia,	<i>Springfield, Ohio.</i>
CLARA McLEAN,	Lasellia,	<i>Rockville, Conn.</i>
MARION MANN,	S. D.,	<i>East Weymouth, Mass.</i>
ANNIE MAE PINKHAM,		<i>Haverhill, Mass.</i>
MARINETTE RAMSDELL,		<i>Manistee, Mich.</i>
ANNA ROUSE,		<i>Rochester, N. Y.</i>
MARY UPHAM,		<i>Newtonville, Mass.</i>
ELIZABETH WELTY,		<i>Bloomington, Ill.</i>
KATE WHELDON,	Lasellia,	<i>Emporia, Kan.</i>



Senior Class History.

“JONIE” DEERING has attracted much attention since her birthday, when she jumped into the President’s chair and began to rule, so tradition says. She has taken Mrs. Martin’s exercises so long that she has at last acquired the “Martin” specialty,—repose in action.

GEORGIA DUNCAN was certainly “born in advance of time,” for the psalm “I want to be a Military Man” had not yet been invented, and yet she had instincts of a great general. In early childhood she improved each spare moment in drilling the neighbors’ children and other inanimate objects; a habit which has stood her well in need at Lasell.

MABLE GOODWIN commenced to be burdened with the cares, troubles and responsibilities of life March 31, 1778. She entered Lasell in the fall of ’01. Throughout her career in school she has always made it her purpose to refrain from all kidishness, and to devote her time entirely to her lessons.

CATHERINE KENDRICK, born in Webster Groves, Mo.; and in order that she might be known among Easterners as well as Westerners, she came to Lasell. The former have become much attached to her, but we have never been sure of her affections for us, because at odd moments in conversation she has been seized by a spasmodic movement of the left shoulder blade; an action known in polite society as shrugging.

MARION MANN began to talk July 23, 1880, at Walpole, Mass.; came to Lasell Seminary at the opening of school ’97, and has remained

here in spite of many flattering offers from Rogers Brothers to instruct the performers in the art of facial expressions.

Emporia, Kansas, was suddenly awakened (accidents will happen) by the giggle of KATE WHELDON. It has now relaxed into its former state of somnolency, while we are suffering. Cheer up, Emporia, wait till June.

BESSIE WELTY started her brilliant career in Bloomington, Ill. When she had convinced the inhabitants of her native town that there was nothing they could tell her which she did not already know, she came to Lasell, and soon demonstrated this same fact to all of us. Bloomington, get your laurel ready.

MARY UPHAM began to square up with the world October 2, 1881, for bringing her into existence, and has been busy ever since in making her friends wretchedly happy by practical jokes. She has even been known to lie awake nights after nine-forty, planning up some special treat for a favorite (?) friend.

Why do we say "BELL CLOKEY of Illinois"? Why, everyone knows she is from Decatur. She has long since made her name in the literary world. Even as a little girl she wrote stories in her childish way, and so her talent increased, and when she accepted a position as Editor-in-chief on the school staff,—well (?) some do say that when her term of three months ended she tried to buy off the Editors for the other terms.

Do the people of Haverhill realize what a great genius made her appearance in their town July 13, 1880? No? Well, that is too bad! Suppose you inquire at Lawrence, for ANNIE MAE PINKHAM is a wonder. It is feared we don't know her true value, even if Fred does.

HATTIE MCGREGOR and ELLEN MCGREW,

They were two;

What *they* did,

Well,—we never knew.

(Inquire at Springfield, Ohio.)

No doubt everyone knows how famous Los Angeles has become, for it is the home of the celebrated ELLEN CHASE, the world-renowned pianist. Although she was born at Cochituate, Mass., Los Angeles claims her because she moved there when a child. Since her arrival at Lasell, three years ago, her playing has greatly improved (if such a thing were possible).

Ever-smiling LAURA CHASE is the poet of Lasell. Her reputation arrived here before she did, for before graduating from the Los Angeles High School she became prominent for her poetical attainments.

If anyone goes into CORNELIA DOUGLASS' room at 9.10, she will find the occupant following Mrs. Martin's advice and indulging in malted milk. If "Cornie" keeps this up she will so increase in avoir-dupois that we are afraid her Troy friends will not recognize her when she returns.

EDITH McCLURE, a young society bud, graduated from the Dayton High School last year. She came to Lasell last September for a few finishing touches before blossoming forth into the gay world of society, so full of "proms.," etc.

While living at Denver, FLORENCE HAYDEN was offered the position of prima donna in the comic opera "The Jolliers," but fearing she had not attained perfection in technique, she thought best to pursue her musical studies. The girls of her corridor no doubt appreciate her warbling.

LOTTA HEWSON, whose fondness for Yale banners is quite manifest, was born at Kansas City, Kansas. Having attained sufficient knowledge at the High School there to enter Lasell, she left her "happy home" in 1900. Popularity was hers, and in 1901 she became Vice President of the Senior Class.

Readers of the *Lasell Leaves* can fully appreciate MARINETTE RAMSDELL'S ability for writing short stories if they have read her latest one, entitled, "Auburndale to Detroit in Twenty-seven Hours."

This story relates her experiences on her trip Christmas, while going to her home in Manistee, Mich. While at the Manistee High School she was on the editorial staff of the high school paper. Desiring to perfect herself in that line, so that she might return to Manistee and re-assume the editorship of the high school paper, she came to Lasell in 1900. Realizing her literary qualities, the Seniors have chosen her for their honorable historian.

As Blair, Neb., did not furnish very good facilities for learning the arts of housekeeping and sewing, HELEN HOWES boarded the train for Auburndale one September day. She has not only learned to manage a household, but also business affairs, and is the very active Business Manager of the *Lasell Leaves*.

Quiet, unassuming BESSIE FULLER left "home and mother" for the busy life at Lasell last year. She has a wonderful memory, which displays itself at drill; for Bessie calls the roll so fast, the members of Company C hardly have time to answer. It is rumored that she hopes to enter the vaudeville, to exercise this talent.

Twenty years ago, when Auburndale's "Wanamaker" opened his gorgeous store with a bargain sale, CLARA McLEAN was born at Rockville, Conn. The art of making great bargains was infused in her, and the habit has never failed her; at least, that is what one would think from the results of her numerous shopping tours to Boston.

Although GRACE BULLOCK gave up the charms of a minstrel show to come to Lasell, she has not forsaken her mandolin. She even becomes so enraptured while playing that she forgets about certain Saturday evening receptions.

FLORENCE EBERSOLE (now I expect everyone wonders which one of the trio she is), having acquired all of the knowledge that Cincinnati afforded, decided to come to Lasell, where she and Annie Mae Pinkham became inseparable. It is sometimes a question how either one could ever exist without the other.

BESSIE DRAPER, who is always smiling, seems to be fitting herself for a society leader, where she expects to shine at the White House receptions, which she has already attended with her father.

ANNA ROUSE hies from Rochester, N. Y., and is noted for her "talkativeness" and pleasing ways.





By
E. O. Johnson
1901.

Junior Class.

Motto: "Amor omnia vincit."

Class Colors: Green and White.

Class Flower: White Rose.

Class Yell: Hu-rah, hu-rah, hu-rah-ree,
We're the Class of '03.
Ona tona wah tah,
Ona tona wah tah,
Ona tona wah tah,
Wah! wah! wah!
Wa-a a a a a h!

HONORARY MEMBER.

CHAUNCEY M. DEPEW.

NELL D. JONES	<i>President.</i>
ISABELLA BLACKSTOCK	<i>Vice President.</i>
IDA MALLORY	<i>Secretary-Treasurer.</i>

Name.	Club.	Residence.
LENA ARMSTRONG,	S. D.,	<i>Bozeman, Mont.</i>
CECIL BAKER,		<i>Hastings, Neb.</i>
ISABELLA BLACKSTOCK,	Lasellia,	<i>Shahjahanpur, India.</i>
MARIE BIDDLE,	Lasellia,	<i>Ashland, Pa.</i>
KITTY CLEMENS,	Lasellia,	<i>Pottsville, Pa.</i>
EDITH EBERSOLE,	S. D.,	<i>Cincinnati, Ohio.</i>
CONSTANCE ERDMAN,		<i>Allentown, Pa.</i>
EDNA A. FRANK,	Lasellia,	<i>Indianapolis, Ind.</i>
MARIE GIBERT,		<i>Cincinnati, Ohio.</i>

Name.	Club.	Residence.
CARRIE GEORGE,		<i>Lynn, Mass.</i>
BERTHA HAYDEN,		<i>East Hartford, Conn.</i>
NELL D. JONES,	Lasellia,	<i>Paris, Ill.</i>
MARION LOOMIS,		<i>Palmer, Mass.</i>
JOEL LAPOWSKI,	Lasellia,	<i>Abilene, Texas.</i>
FRANCES LEAVITT,	S. D.,	<i>Butte, Mont.</i>
CALLIE LE SEURE,	S. D.,	<i>Detroit, Mich.</i>
IDA MALLORY,		<i>Franklin, Pa.</i>
HELEN ORCUTT,		<i>Hornellsville, N. Y.</i>
MABEL POOLER,	Lasellia,	<i>Wellesley, Mass.</i>
EDNA SAWYER,		<i>San José, Cal.</i>
ELIZABETH THORNE,		<i>Gardiner, Me.</i>
MABELLE WHITNEY,		<i>Boston Highlands, Mass.</i>
WINIFRED KNIGHT,	Lasellia,	<i>Buffalo, N. Y.</i>
SARAH SOULE,		<i>Freeport, Me.</i>
HARRIET SLEICHER,		<i>Albany, N. Y.</i>



Junior Class History.

IN the fall of ninety-nine several girls passing through one of the corridors of Lasell, heard wild applause issuing from a recitation room. "What is going on in there?" asked one of the new girls. "Oh, the Sophomores are holding a class meeting," replied an all-knowing old girl. A class meeting? To be sure. The new girls then held a whispered conversation, and separated with an air of great secrecy. The next morning a notice was read in chapel, announcing that there would be a meeting of the Freshmen in Room 2. It was then that our class came into existence, and although we were new and "fresh" we held our first meeting, elected our officers and chose our motto and colors with remarkable dignity and wisdom. We met with and overcame difficulties not unlike those conquered by the preceding classes, and when our year's work was finished we had stored up in our memories a goodly supply of selections from the Psalms.

We entered upon our Sophomore year with more confidence than we had had as Freshmen, knowing that some of our corners had been rounded and a little of our greenness faded. Still, we did not boast, but struggled bravely with "Trig," showed our love for gymnastics in history, and finally crowned the year with a May-pole dance, the figures of which were so fantastic and complicated that some of us feared for the dignity of the class. When Commencement Day came, and the Seniors received their diplomas, it was not with soft whispers but with glad shouts that we proclaimed ourselves Juniors. And did we not have reason to be joyful? The vision of class night had not faded from our minds, and we saw before us the honor and glory of carrying torches over our own dear Seniors the following June. We are not anxious to lose them, nor do we find suping for them a drudgery, but a pleasure, and we hope that the Juniors next year will find it the same with the girls of '03. We number twenty-five, loyal to our class and to Lasell, striving to live up to our motto, *Amor omnia vincit.*



Sophomore Class.

Motto: "Quid tibi est."

Class Color: Purple and Lavender.

Class Flower: Fleur-de-lis.

OFFICERS.

EDITH SISSON *President.*
 GLADYS PATTERSON *Vice President.*
 JOE HALEY *Secretary-Treasurer.*

Name.	Club.	Residence.
ELEANORE BOHM,		<i>Paterson, N. J.</i>
EDITH BALDRIDGE,		<i>Hollidaysburg, Pa.</i>
EMILY BROOKFIELD,	S. D.,	<i>Sterling, Ill.</i>
JANE FORD,		<i>Kingston, Mass.</i>
COURTNEY HARLAN,		<i>Bloomington, Ill.</i>
JOE HALEY,	Lasellia,	<i>Gardiner, Me.</i>
JANET GRIFFIN,		<i>New Haven, Conn.</i>
KATHERINE JENCKS,	Lasellia,	<i>Nayatt Point, R. I.</i>
GRACE ORDWAY,		<i>Lawrence, Mass.</i>
EDITH SISSON,	S. D.,	<i>Binghamton, N. Y.</i>
GLADYS PATTERSON,		<i>Toronto, Canada.</i>
CHAROLLE STRONGMAN,		<i>Brooklyn, N. Y.</i>
LUCILE ZELLER,		<i>Richmond, Ind.</i>

History of the Sophomore Class.

IN the fall of nineteen hundred we appeared at Lasell, very timid young maidens, confessing, when asked by some of the "Old Girls," that we were Freshmen.

After having found our way to the numerous recitation rooms for classification, we gathered in small groups to discuss the appearance of our new home; and questions such as, "Are you a Freshman or a Special?" were asked.

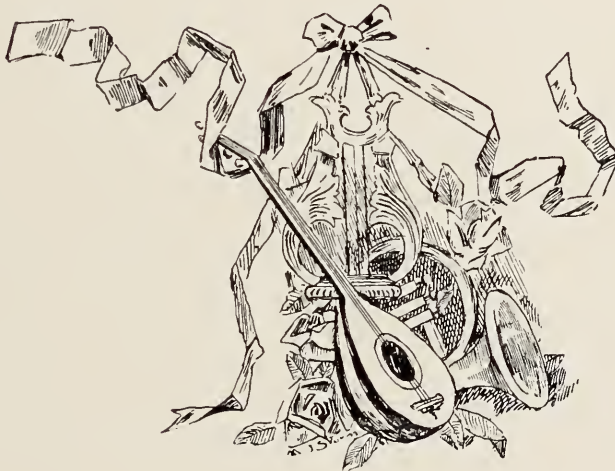
A few weeks later a class meeting was held, and the class of Nineteen Hundred and Four considered itself well on the road to Fame. During the year our class did its best, keeping in mind the thought that if we studied enough, didn't buy candy, and had our lights out promptly at nine-thirty, we would become Sophomores some time in the distant future. The only important social event of the year was the grand (?) reception given by the Faculty to the Sophs. and Freshmen. At the time we certainly felt very small and unimportant, but after it was over we agreed that we had carried our responsibility exceedingly well, and we seemed to grow in consequence.

When September nineteen hundred and one came, and we returned for our Sophomore year, we greeted with joy the new Sophs. who came to swell our number; but even with their assistance we numbered but twelve. In our class meeting we resolved upon the motto *Quid tibi est* ("What's it to you?"), and adjourned feeling well satisfied with ourselves and our motto, which seemed to suit us so well.

We have studied hard, and although after futile efforts to be polite and speak French, we have often been greeted with such expressions as "Oui, mon chien," "En Français," "Chinois"; still we have not despaired, but have struggled on, learning to dress in fifteen minutes

or less. Although no reception has been given to our class alone this year, we have enjoyed the receptions given by the Faculty, in which we have had a share, and have made them pronounced successes by our presence.

The Sophomore Class has not yet shown the material of which it is made, but when the occasion offers we feel sure we shall not be found lacking, and, therefore, we close with the cheerful thought that we are the "Class of the Future."



1, 2, 3, 4, 5, 6, 7.

ALL

GOOD

CHILDREN

GO TO

HEAVEN.

Freshman Class.

Motto: "Deo iuvante."

Class Colors: Gold and White.

Class Flower: Daisy.

OFFICERS.

ELIZABETH WHITLEY *President.*
HELEN DANFORTH *Secretary.*

Name.	Club.	Residence.
HELEN DANFORTH,	S. D.,	<i>Washington, Ill.</i>
ETHEL FOSS,		<i>Farmington, Me.</i>
EDITH SOLOMON,		<i>Pittsburg, Pa.</i>
VIRGINIA TABLER,		<i>Harrodsburg, Ky.</i>
LOIS THOMAS,		<i>Newton, Mass.</i>
BARBARA VAIL,	S. D.,	<i>Nagasaki, Japan.</i>
ELIZABETH WHITLEY,	Lasellia,	<i>Monticello, N. Y.</i>

History of the Freshman Class.

IT was with new hopes and higher inspirations that three passengers changed from the Prep. train at the station September 26, 1901, to the Freshman train. Already on this train were four others who had never before been over any division of the Lasell route. All was hurry and bustle. Schedules, catalogues and "Guides to Life" were in great demand. After they had consulted these pamphlets, and made numerous trips to the bureau of information, several of the new members of the Freshman party decided to change occasionally to special trains for the sake of variety. Before long, when the last good-bys were said to the kind friends who came to see them off for Lasell Diploma, the train pulled easily out.

One member of the class managed so well to *Vail* her identity that a passenger meeting her in the excitement of starting mistook her for a member of the Senior party, which was just leaving on another track.

It was not until we were well on our way that we were seven. This discovery was made one day when an ambitious member of the party, who later consented to act as manager (although the thought of the responsibility made her turn *Whit(e)ly*), invited us to meet that evening in the English section to become better acquainted. All (?) gladly accepted. When we returned to our various sections we were physically, not spiritually, chilled by the night air. Anyone wishing a fuller account of this informal meeting will please inquire of Miss *Austin*, who, because of the porter's neglect to furnish light, kindly offered her assistance.

The first stop the Freshman train made, except the one at Thanksgiving, which was just to get a good meal, was at Christmas vacation. There the passengers rested from their travel through Booklore for three delightful weeks.

One of the first things that the Freshmen saw when they resumed their journey was a prominent mathematical *P(1)ackard*, which boldly said, "Seeing is not believing." This sign was above the box of planes and solids in the baggage car.

Often the train ran slowly, but the passengers never got off except at stations. They had been kindly warned by those who had ridden over the same road the year before, and must have been speaking from experience, that it was not safe to get off, for cows were likely to take them for grass.

One little Freshman was attracted by tempting *Bates* into the Latin section, where her brain received a severe strain.

The smoothness of the whole journey was due to the exceptionally fine train. However, our *Carpenter* and fireman occasionally found it necessary to stir up the coals of discipline to a glowing fire.

Slowly but surely the train was pulling in to its destination. The passengers, who for three days had been struggling to sort out the articles they were going to wear from the necessary debris of packing, gathered in the parlor car. There they were found after the train had stopped, still saying "Good-by."



Specials.

Color: Yellow.

Flower: Daffodil.

Motto: "Haud ye leal."

Name.	Club.	Residence.
ADAMS, ABBIE,		<i>Pittsfield, N. H.</i>
ALLEN, VERANA,		<i>Atkinson, Kan.</i>
ARNZEN, LAURA,		<i>Fall River, Mass.</i>
ALBRIGHT, MARGARET,		<i>Allentown, Pa.</i>
BLAGUE, MABEL,		<i>Springfield, Mass.</i>
BLUM, MABEL,		<i>Galveston, Texas.</i>
BADET, EVA,		<i>South Bend, Ind.</i>
BALL, BESSIE,		<i>Norwood Park, Chicago, Ill.</i>
BARNET, EDITH,		<i>Springfield, Mass.</i>
BUFFINTON, MARY,		<i>Fall River, Mass.</i>
BROWN, LOUISE,		<i>De Kalb, Ill.</i>
BRYCE, JANET,		<i>Pittsburg, Pa.</i>
COLEMAN, BESSIE,		<i>Troy, Ohio.</i>
COLEMAN, SYBIL,		<i>Troy, Ohio.</i>
CLARK, DORÉ,		<i>Milford, Conn.</i>
CLARK, ETHEL,		<i>Bradford, Pa.</i>
DAVIS, FONNIE,		<i>Lawrence, Mass.</i>
DRAKE, AGNES,		<i>Pittsfield, N. H.</i>
DALE, GRACE,		<i>Marietta, Ohio.</i>
EBELING, ELLA,	S. D.,	<i>Evanston, Ill.</i>
EBERSOLE, HELEN,	S. D.,	<i>Cincinnati, Ohio.</i>
ELLWOOD, ELEANOR,	S. D.,	<i>Sycamore, Ill.</i>
EMERICK, HARRIET,		<i>Milton, Pa.</i>

Name.	Club.	Residence.
FOSTER, GRACE,	Lasellia,	<i>Lancaster, Pa.</i>
FOLGER, ETHEL,		<i>South Framingham, Mass.</i>
FRANCK, CHRISTINE,		<i>Lanark, Ill.</i>
FRASER, SARA,		<i>Saginaw, Mich.</i>
GALLOWAY, ANNE,	S. D.,	<i>Fond du Lac, Wis.</i>
HUMPHREY, ADELE,	S. D.,	<i>St. Louis, Mo.</i>
HUNT, EMILY,		<i>Concord, Mass.</i>
HAMMOND, RACHAEL,		<i>Lyons, N. Y.</i>
HOLBROOK, LAURA,		<i>Bradford, Pa.</i>
HOLBROOK, SARAH,	S. D.,	<i>Bradford, Pa.</i>
HOLTZMAN, CLARA,		<i>Schenectady, N. Y.</i>
HOOK, ETHEL,		<i>Brewer, Me.</i>
HUGHES, SARAH,		<i>Foxcroft, Me.</i>
JEWETT, EDITH,		<i>Auburndale, Mass.</i>
JEWET, MARGARET,		<i>Auburndale, Mass.</i>
JONES, MABEL,		<i>Evanston, Ill.</i>
KNEELAND, CAROLINE,		<i>Warren, Ohio.</i>
LAMB, GEORGIE,		<i>Roxbury, Mass.</i>
LAUGHLIN, CLARICE,		<i>Portland, Me.</i>
LOCKWOOD, EDNA,	S. D.,	<i>Pawtucket, R. I.</i>
LEONARD, MAY,		<i>Somerset, Mass.</i>
MATTHEWS, GRACE,		<i>Youngstown, Ohio.</i>
MAHLER, MYRTLE,		<i>Cleveland, Ohio.</i>
MACDONALD, JOSEPHINE,	Lasellia,	<i>Rossland, B. C.</i>
MANCHESTER, BERTHA,	S. D.,	<i>Providence, R. I.</i>
MILLER, MARTINA,		<i>Columbus, Ohio.</i>
MOTT, ALICE,		<i>Rochester, N. Y.</i>
NELSON, MIRIAM,		<i>Derby Line, Vt.</i>
NASH, ANNA,		<i>Addison, Me.</i>
PALMER, MAE,		<i>St. Paul, Minn.</i>
PATTERSON, GLADYS,		<i>Toronto, Canada.</i>
PALEY, JOSEPHINE,		<i>Beloit, Wis.</i>
PEASE, ETTA,		<i>Springfield, Mass.</i>
ROGERS, LADORA,		<i>Wheeling, W. Va.</i>
STONE, ELIZABETH,		<i>Hollidaysburg, Pa.</i>

Name.	Club.	Residence.
SMITH, FLORENCE,	Lasellia,	<i>Fitchburg, Mass.</i>
SHIELDS, MABEL,	S. D.,	<i>Albany, N. Y.</i>
SALMON, LORETTA,		<i>Beloit, Wis.</i>
STAHL, ALICE,		<i>Bellevue, Ohio.</i>
SCHRAM, EO,		<i>Seattle, Wash.</i>
SLACK, BEATRICE,		<i>Brookline, Mass.</i>
TRIPP, DELIA,		<i>New Bedford, Mass.</i>
WOODBURY, LILA,		<i>Burlington, Vt.</i>
WOLF, EDNA,		<i>Kansas City, Mo.</i>
WRIGHT, AGNES,	Lasellia,	<i>Milwaukee, Wis.</i>
SKINNER, RUTH,	Lasellia,	<i>Keene, N. H.</i>
TAYLOR, ROSE,	Lasellia,	<i>Mansfield, Ohio.</i>
WELLS, ADA,		<i>Newtonville, Mass.</i>
OSGOOD, LILA,		<i>Roxbury, Mass.</i>



Preparatory Class.

Name.	Address.
RUTH BUTTERFIELD	<i>Kingman, Me.</i>
EDITH HILL	<i>Gilmanton, N. H.</i>
MILDRED JOHNSTON	<i>Evanston, Ill.</i>
GEORGIA LAMB	<i>Roxbury, Mass.</i>
ARGENTA MACDONALD	<i>Rossland, B. C.</i>
LILLA OSGOOD	<i>Roxbury, Mass.</i>
BEATRICE SLACK	<i>Brookline, Mass.</i>
MARION STAHL	<i>Bellevue, Ohio.</i>
BERTHA TIBBETTS	<i>Goffstown, N. H.</i>

Song of the Supes.

TUNE: "SEEING NELLIE HOME."

COME, ye Supes, and raise your voices
To the praise of Seniors grave;
'Tis for them we sweep and dust and labor,
And for them we love to slave.

Chorus.

Yes, we'll gladly sing our roundelays
To the girls of '02,
And we'll ne'er forget in future days
Our Seniors dear and true.

'Tis with pride we hold their torches;
'Tis with joy we make each bed;
And it is with sorrow we look forward
To the time farewell is said.

Chorus.

Yes, we'll gladly sing our roundelays
To the girls of '02, etc.

W. K.

It's Lasell.

TUNE: "YOU'RE THE ONLY ONE."

CHERE'S a school where the girls are all clever;
It's Lasell, it's Lasell.
Fond memories will haunt me forever
Of Lasell, of Lasell.
There's a school famed abroad through the nation;
It's the best, one can tell,
For you know without any explanation
That 'tis named Lasell.

Chorus.

It is named Lasell,
Yes, it's named Lasell.
Of the schools I find,
There are none to my mind
Like this same Lasell.
Yes, this same Lasell;
There's none can compare
With the standard taught there
In this same Lasell.

L. A.

"Abandon hope, all ye who enter here."



ABBIE ADAMS	"Silent and True."
AARGARET MLBRIGHT	"The Art of Letter Writing."
AARANA VLEN	"Modern Ghosts."
ANNA ANDREWS	"An Ambitious Woman."
AENA LRMSTRONG	"A Hopeless Case."
AAURA LRNZEN	"Harvard Stories."
BVA EADET	"My Lady Peggy Goes to Town."
BECIL CAKER	"A Daughter of the West."
BDITH EALDRIGE	"In Laughland."
BESSIE BALL	"A Rebellious Heroine."
BDITH EARNETT	"Red as a Rose is She."
BARIE MIDDLE	"Fables in Slang."
BSABELLA ILACKSTOCK	"How? When? Where?"
BABLE MLAGUE	"Vesper Bells."
BLEANOR EOHM	"The Silent Partner."
BMILY EROOKFIELD	"Her Baby Brother."
BARA SROWN	"Eleanor."
BANET JRYCE	"Brought to the Front."
BARY MUFFINTON	(See "Aouse.")
BRACE GULLOCK	"The Lamplighter."
BUTH RUTTERFIELD	"Pure Gold."
CLLEN EHASE	"Blessed be Drudgery."
CAURA LHASE	"Her Boston Experiences."
CARRIET HHILDS	"Bound to Rise."
CORA DLARK	"Dora Darling."

CTHEL ELARK	“Doña Perfecta.”
CMILY ELEMENS	{ “Songs Before Sunrise.”
	“Tarry Thou 'Til I Come.”
CELL BLOKEY	“Little King Davie.”
CYBIL SOLEMAN	“Worth Winning.”
DRACE GALE	“Harum Scarum.”
DELEN HANFORTH	{ “Impressions and Experiences.”
	“Under Two Flags.”
CESSIE BOLEMAN	“How to be Pretty Though Plain.”
DONNIE FAVIS	“Good For the Soul.”
DOANNA JEERING	“The Seats of the Mighty.”
DORNELIA COUGLASS	“Bashful Fifteen.”
DGNES ARAKE	“A Senior’s Devotion.”
DESSIE BRAPER	“The Washingtonians.”
DEORGIE GUNCAN }	“Bound Together.”
FESSIE BULLER }	
ELLA EBELING	“The Life of Greene.”
EDITH EBERSOLE	“A Dream of Fair Women.”
EELLEN HBERSOLE	“To Right the Wrong.”
ELORENCE FBERSOLE	“Camping Out.”
ELEANOR ELLWOOD	“The Shadow of a Dream.”
EARRIETT HMERICK	“Memories of a Musical Life.”
EARY MRDMAN	“Three Stranded Yarns.”
FTHEL EOLGER	“A New England Nun.”
FENNIE JORD	“An Agitator.”
FTHEL FOSS	“Steadfast.”
FRACE GOSTER	{ “Twenty Minutes Late.”
	“A Victim of Circumstances.”
FHRISTINE CRANCK	“Twice Told Tales.”
FDNA ERANC	“Dri and I.”
FARA SRASER	“The Sentimentalists.”
GNNE AALLOWAY	“Our Little Ann.”
GARRIE CEORGE	“The Serious Wooing.”
GARIE MIBERT	“The Guardian Angel.”
GABEL MOODWIN	“The Night Hawk.”
GARY MOODWIN, “The Evangelization of the World in this Generation.”	

GANET JRIFFIN	“In the First Person.”
HOE JALEY	“In the Cheering-up Business.”
HACHEL RAMMOND	“The Invisible Man.”
HOURTENY CARLAN	“My Wayward Partner.”
HERTHA BAYDEN	“What Can She Do?”
HLORENCE FAYDEN	“The Opinions of a Philosopher.”
HOTTA LEWSON	“A Bud of Promise.”
HDITH EILL	“A Young Barbarian.”
HAURA LOLBROOK	“Out of the Hurly Burly.”
HARA SOLBROOK	“Pleasures of Life.”
HLARA COLTZMAN	“Ten Thousand a Year.”
HTHEL EOOK	“The Master Craftsman.”
HELEN HOWES	“A Little Country Girl.”
HARAH SUGHES	“Only a Fiddler.”
HDELLE AUMPHREY	“Her First Appearance.”
HMILY EUNT	“A Little Maid of Concord Town.”
JATHERINE KENCKES	{ “The Gentleman from Indiana.” “In a Steamer Chair.”
JDITH EEWETT	“The Professor’s Daughter.”
JILDRED MOHNSTON	“The Big Bow Mystery.”
JABEL MONES	“Letters to the Joneses.”
JELL NONES	“Her Ruling Passion” [Van Dyke].
KATHERINE KENDRICK	“Burying the Hatchet.”
KINA VEYSER	“The Unknown Masterpiece.”
KINIFRED WNIGHT	“Hard Cash.”
LEORGIA GAMB	“Ye Book of Good Times.”
LOEL JAPOWSKI	“The Silent South.”
LLARICE CAUGHLIN	“The Rambler.”
LRANCES FEAVITT	“The Autobiography of a Professional Beauty.”
LAY MEONARD	“The Wise Woman.”
LALLIE SE CEURE	{ “The Descent of Man.” “This Wicked World.”
LDNA EOCKWOOD	“Come Forth.”
LARION MOOMIS	“The Rhymer.”
LYRTL E MYMAN	“In Search of Mademoiselle.”
MOSEPHINE JACDONALD	“What Gold Cannot Buy.”

MARGENTA ACDONALD	"Breaking the Record."
MYRTLE MAHLER	"Vacation Days."
MIDA IALLORY	{ "Essays in Idleness." "The Drones Must Die."
MERTHA BANCHESTER	"The Sleeping Beauty."
MARION MANN	"Silence and Other Stories."
MIRACE GATTHEWS	"Friends in Exile."
MCDITH ELURE	"All Sorts and Conditions of Men."
MCATTIE HGREGOR	"How to Swim."
MCELLEN EGREW	"The Story of My Heart."
MCLARA CLEAN	"At Heart a Rogue."
MARTINA MILLER	"The Majesty of Calmness."
MLICE AOTT	"A Pair of Blue Eyes."
NNNA AASH	"Rings and Love Knots."
NIRIAM MELSON	"That Beautiful Wretch."
NILDRED MICKERSON	"The Possibilities of a Chafing Dish."
OELLEN HRCUTT	{ "Born to Serve." "But Men Must Work."
ORACE GRDWAY	"Innocents Abroad."
OILLA LSGOOD	"Good Old Times."
PNNETTE AALEY	{ "The Cup of Trembling." "Pushed by Unseen Hands."
PAYE MALMER	"Twixt Cupid and Cræsus."
PLADYS GATTERSON	"The Way of Perfection."
PTTA EEASE	"Harvard Episodes."
PNNIE AAE MINKHAM	"The Story of an Untold Love."
PLIZABETH EOLHEMUS	"A Dear Little Girl."
PABEL MOOLER	"Plain Speaking."
RARIONETTE MAMSDPELL	"The World's Almanac."
REDORA LOGERS	"By the Still Waters."
RNNA AOUSE	"A Breaker of Laws."
SORETTA LALMON	"The Sacrifice of Silence."
SDNA EAWYER	"A Daughter of the West."
SABEL MHIELDS	(See "Wnight.")
SO ECHRAM	"Jane," "Mountain Playmates."
SDITH EISSON	"Don't Worry."

SEATRICE BLACK	"The Still Water Tragedy."
SARRIETT HLEICHER	"The Portion of Labor."
SLORENCE FMITH	"She Walks in Beauty."
SDITH EOLOMAN	"Bunny's Friends."
SARA SOULE	"Near to Nature's Heart."
SLICE AT AHL	"Great Expectations."
SARION MTAHL	"Easy Steps for Little Feet."
SORA CTOWE	"Active Service."
SHARLOTTE CTRONGMAN	"A Genuine Girl."
TIRGINIA VABLER	"True as Steel."
TOSE RAYLOR	"A Transplanted Rose."
TOIS LHOMAS	"A Herald of the West."
TLIZABETH EHORNE	"Little Saint Elizabeth."
TERTHA BIBBETS	"Success is to You."
TELIA DRIPP	"The Lady of Dreams."
VARBARA BAIL	"Sermons Out of Church."
WDA AELLS	(See "Black.")
UARY MPHAM	{ "On Time."
	{ "Climbing the Rope."
WESSYE BELTY	{ "An American Girl Abroad."
	{ "In Silk Attire."
WATE KHELDON	{ "The School for Saints."
	{ "It's Never Too Late to Mend."
WLIZABETH EHITLEY	"My Literary Passions."
WABELLE MHITNEY	"Gossip in a Library."
WILA LOODBURY	"The Golf Girl."
WDNA EOOLF	"Wolfville."
WGNES ARIGHT	"A Girl in Ten Thousand."
ZUCILLE LELLER	"Dame Care."
BABEL MLUM	"The Annals of a Quiet Neighborhood."
BRANCIS FUZELLE	"Sweet Sixteen."
JARGARET MEWETT	"A Daughter of To-day."
KAROLYN CNEELAND	"A Bashful Maid."
SLIZABETH ETONE	"A Lady of Quality."
SUTH RKINNER	{ "A Rogue's Conscience."
	{ "The Green Flag."

“Keep Out! This Means YOU.”

CHAIRS and pillows in the hall;
Windows open wide;
Dressing table standing bare—
Trinkets all inside.
“Busy” sign upon the door;
Cupid inward peeping—
What does all this rumpus mean?
Why—it’s Mable—sweeping!

Couches covered o’er with rugs
And photographs galore;
E’en *his* photograph has gone
(Hidden in a drawer).
Hear the broom’s resounding whacks!
Dust is upward leaping!
Heav’ns—is this a hurricane!!
No!—’tis Mable—sweeping.

See the figure stern and grim
Wielding wild the broom;
Dust-cap set on frowsled hair;
Air of settled gloom.
Is this some poor tortured mind
In confinement’s keeping?
Can it be you have not guessed—
It is *Mable—sweeping!*

* * * * *

’Tis the Sabbath—Hark that sound!
On her door tacked “Sleeping.”
She goes to Harvard Monday next—
It is Mable—sweeping!



Ed. Chas. Adams
1914



Dreka, Phala.

Lasellia Club.

First Term.

<i>President</i>	JOANNA DEERING.
<i>Vice President</i>	CATHERINE KENDRICK.
<i>Secretary</i>	HATTIE MCGREGOR.
<i>Business Manager</i>	JOEL LAPOWSKI.
<i>Critic</i>	KATE WHELDON.
<i>Executive Committee</i>	{ ELLEN CHASE. KITTY CLEMENS. ROSE TAYLOR.
<i>Guard</i>	ISABEL BLACKSTOCK.

Second Term.

<i>President</i>	CATHERINE KENDRICK.
<i>Vice President</i>	ISABEL BLACKSTOCK.
<i>Secretary</i>	NELL JONES.
<i>Business Manager</i>	JOEL LAPOWSKI.
<i>Critic</i>	KATHERINE JENCKS.
<i>Executive Committee</i>	{ FLORENCE SMITH. GRACE BULLOCK. JOSEPHINE HALEY.
<i>Guards</i>	{ ELLEN MCGREW. EDITH McCLURE.

Third Term.

<i>President</i>	NELL JONES.
<i>Vice President</i>	KATE WHELDON.
<i>Secretary</i>	KITTY CLEMENS.

<i>Business Manager</i> JOEL LAPOWSKI.
<i>Critic</i>	WINIFRED KNIGHT.
<i>Executive Committee</i>	{ RUTH SKINNER. CORNELIA DOUGLASS. MARIE BIDDLE.
<i>Guards</i>	{ MABEL POOLER. KATHERINE JENCKS.

MEMBERS.

MARIE BIDDLE.	WINIFRED KNIGHT.
ISABEL BLACKSTOCK.	JOEL LAPOWSKI.
GRACE BULLOCK.	JOSEPHINE MACDONALD.
ELLEN CHASE.	EDITH McCLURE
KITTY CLEMENS.	HATTIE MCGREGOR.
BELL CLOKEY.	ELLEN MCGREW.
JOANNA DEERING.	CLARA McLEAN.
CORNELIA DOUGLASS.	MABEL POOLER.
GRACE FOSTER.	RUTH SKINNER.
EDNA FRANK.	FLORENCE SMITH.
JOSEPHINE HALEY.	ROSE TAYLOR.
KATHERINE JENCKS.	KATE WHELDON.
NELL JONES.	ELIZABETH WHITLEY.
CATHERINE KENDRICK.	AGNES WRIGHT.

HONORARY MEMBERS.

MR. DUNHAM.	MRS. MARTIN.
MR. HILLS.	MISS WHITE.
MRS. LOOMIS.	MR. WINSLOW.
MR. JEWETT.	

Briggs's Will.*

BE IT REMEMBERED, that I, Briggs Bragdon, of Auburndale, in the County of Middlesex and Commonwealth of Massachusetts, being of sound instinct and voice, but knowing the uncertainty of dog days, do make this my *last will and testament*.

After the payment of my just debts (meat bills) and funeral charges, I bequeath and devise as follows:—

To any hurdy-gurdy playing my funeral march—my vocal cords to draw the wagon.

To all persons liable to lose themselves—my collar.

To any person romantically inclined—a lock of my auburn (dale) tresses.

To the Allerlei board—restfulness and a resigned spirit warranted not to fade in any kind of weather.

To a certain member of the Senior Class—my gravity.

To anyone found and convicted of being a punster—a sympathetic wag.

To the orphans of Newton—paws.

To the chorus classes—my musical ear.

To B. V. all my personal love, providing she expresses affection for no other dog except he looks like me.

To my “other canine friends” the best of wishes.

To testimony whereof I hereunto set my paw, and in the presence of three witnesses declare this to be my last will, this thirty-

*Found while making excavations for the foundation of Carpenter Hall.

second day of February, in the year one thousand eight hundred and ninety-two.

BRIGGS BRAGDON.

On this thirty-second day of February, A. D. 1892, Briggs Bragdon, of Auburndale, Massachusetts, has signed the foregoing instrument in our presence, declaring it to be his last will, and as witnesses thereof we three do now at his request, in his presence, and in the presence of each other, hereto subscribe our names.

COLLIE WHITE.

BUL DOGGH.

FOX TERRIER.



The Song Craze.

“**W**E want a school song,”
Said our dear principal.
“We have waited too long;
Come try, one and all.”

A maiden near by,
With a tune in her mind,
Said, “I guess I will try.
Now a rhyme I must find.”

She read all the books
On rhyming and verse;
She absorbed with fixed looks
All rules, long or terse.

She roamed most the time,
Her pencil firmly grasping,
To jot down a particular rhyme
Which came not for the asking.

Her friends she forsook,
Her lessons neglected;
Her parents o’erlooked,
Rhymes only selected.

This mania lasted
Till long into June;
Then her hopes they were blasted—
Some girl used her tune.



Wm. C. Chapman
1892



Dr. Chas. P. Philo.

S. D. Society.

First Term.

<i>President</i>	MARION MANN.
<i>Vice President</i>	FRANCES LEAVITT.
<i>Secretary</i>	MABEL GOODWIN.
<i>Treasurer</i>	BESSIE DRAPER.
<i>Critic</i>	MABEL SHIELDS
<i>Executive Committee</i>	HELEN HOWES.
	FLOSS HAYDEN.
	EDNA LOCKWOOD.
<i>Ushers</i>	EDITH SISSON.
	CALLIE LE SEURE.

Second Term.

<i>President</i>	BESSIE DRAPER.
<i>Vice President</i>	EDNA LOCKWOOD.
<i>Secretary</i>	MABEL SHIELDS.
<i>Treasurer</i>	CALLIE LE SEURE.
<i>Critic</i>	MABEL GOODWIN.
<i>Executive Committee</i>	LENA ARMSTRONG.
	EDITH EBERSOLE.
	FLORENCE EBERSOLE.
<i>Ushers</i>	EMILY BROOKFIELD.
	ELEANOR ELLWOOD.

Third Term.

<i>President</i>	LOTTA HEWSON.
<i>Vice President</i>	HELEN HOWES.
<i>Secretary</i>	LENA ARMSTRONG.

<i>Treasurer</i>	EDITH EBERSOLE.	
<i>Critic</i>	HELEN EBERSOLE.	
<i>Executive Committee</i>	{ BERTHA MANCHESTER. SARA HOLBROOK. ELLA EBELING. EMILY BROOKFIELD.	
		{ ANNE GALLOWAY. HELEN DANFORTH.
<i>Ushers</i>		

MEMBERS.

- | | |
|--------------------|--------------------|
| LENA ARMSTRONG. | LOTTA HEWSON. |
| EMILY BROOKFIELD. | SARA HOLBROOK. |
| HELEN DANFORTH. | HELEN HOWES. |
| BESSIE DRAPER. | ADÈLE HUMPHREY. |
| ELLA EBELING. | FRANCES LEAVITT. |
| EDITH EBERSOLE. | CALLIE LE SEURE. |
| HELEN EBERSOLE. | EDNA LOCKWOOD. |
| FLORENCE EBERSOLE. | BERTHA MANCHESTER. |
| ELEANOR ELLWOOD. | MARION MANN. |
| ANNE GALLOWAY. | MILDRED NICKERSON. |
| MABEL GOODWIN. | EDITH SISSON. |
| FLORENCE HAYDEN. | MABEL SHIELDS. |

BARBARA VAIL.

HONORARY MEMBERS.

- | | |
|----------------------|------------------|
| MARTHA RANSOM. | L. M. PACKARD. |
| FLORENCE H. MARSTON. | CLARA M. AUSTIN. |
| MARY A. MULLIKIN. | EVELYN BATES. |

FRÄULEIN STÜVEN.

“The World is Full of Rubs.”

Shakespeare Class.—“May smile, and smile, and be a villain.”

Faculty night.— “It is meet
That noble minds keep ever with their likes.”

Gym. Hall.—“The way of transgressors is hard.”

Grinds.—“Much study is a weariness of the flesh.”

M. J-n--o.—“A babe in a house is a well-spring of pleasure.”

K-t-y C--m-n.—“What I have been taught I have forgotten;
what I know I have guessed.”

Feasters.—“We burn daylight.” “Some of us will smart for it.”

Senior play.—“A Daniel come to judgment.”

M-r--n-t-e.—“Who says in verse what others say in prose.”

Strikes.—“The endearing elegance of female friendship.”

5.30 P. M.—“And men sit down to that nourishment which is
called supper.”

Congregational choir.—“I thank you for your voices, thank you,—
Your most sweet voices.”

Vacation.— “Eyes, look your last;
Arms, take your last embrace!”

Rising gong.—“Methought I heard a voice cry, ‘Sleep no more!’”

A. K. J.—

“Oh, my prophetic soul,
Mine uncle!”

Allerlei Board.—“Cudgel thy brains no more about it.”

Monday callers.—“None but the brave deserve the fair.”

Carpenter Hall.—“Now by St. Paul the work goes bravely on.”

9.30. P. M.—“Tired Nature’s sweet restorer, balmy sleep.”

Reading classes.—“Fire in each eye, and papers in each hand,
They rave, recite and madden round the land.”

Feasts.—“In hollow murmurs died away,”

“Or whispering, with white lips,—‘The foe!
They come! They come!’”

Briggs.—“And in that town a dog was found,
As many dogs there be.”

A. M. P. and F. E.—“A sudden thought strikes me,—let us swear
an eternal friendship.”

Mail time.—“Magnificent spectacle of human happiness.”

Dessert.—“A delusion, a mockery and a snare.”

2.20 P. M.—“Go forth under the open sky, and list
To Nature’s teaching.”





W. Chapman
1902.

Canoe Club.

<i>President</i>	JOEL LAPOWSKI.
<i>Vice President</i>	FRANCES LEAVITT.
<i>Secretary</i>	GEORGIE DUNCAN.
<i>Treasurer</i>	KITTY CLEMENS.
<i>Captain</i>	MISS RANSOM.

MEMBERS.

ISABEL BLACKSTOCK.	FRANCES LEAVITT.
GRACE BULLOCK.	JOSEPHINE MACDONALD.
KITTY CLEMENS.	MIRIAM NELSON.
GEORGIE DUNCAN.	ANNIE MAE PINKHAM.
CARRIE GEORGE.	MISS RANSOM.
CATHERINE KENDRICK.	RUTH SKINNER.
JOEL LAPOWSKI.	FLORENCE SMITH.
MARY UPHAM.	

Introduction.

THIS world is full of girls, they say;
A different type you meet each day.
And now I'll tell
How at Lasell
You find a few at work or play.



Kodak Girl.

THIS one has the kodak craze;
She's always seen on sunny days.
Without a doubt,
If you don't look out,
She'll claim you with her "taking" ways.



Gym. Girl.

DAILY in the gym. she tries
To make her muscle of great size.
She lightly swings
Upon the rings,
And "turns a crab" high in the skies.



Military Girl.

TWICE a week this maiden toils
And battles bravely with the foils.
She must be wary
And learn to parry.
From tests of strength she ne'er recoils.



Swimming Girl.

UPON the spring-board sits the maid.
Of waters deep she's not afraid.
Into the pool,
So calm and cool,
She soon will dive quite undismayed.



Golf Girl.

A STRIKING maid, the golf girl tall;
She swings her club and *buts* the ball.
With graceful ease,
From off the tees,
She drives it far beyond them all.



Society Girl.

CAN this be true,—a low-necked gown?
'T would give a cold,—the very sound.
Is this a joke?
No; she dons a yoke
When she comes to Lasell from her native town.



Drill.

OFFICERS OF COMPANY A.

Captain, GEORGIE DUNCAN. *Lieutenant*, JOEL LAPOWSKI.

Sergeants.

First, CARRIE GEORGE. *Second*, MIRIAM NELSON.
Third, EDITH SISSON.

OFFICERS OF COMPANY B.

Captain, ELLEN CHASE. *Lieutenant*, ANNIE MAE PINKHAM.

Sergeants.

First, LENA ARMSTRONG. *Second*, MABEL SHIELDS.
Third, MABEL GOODWIN.

OFFICERS OF COMPANY C.

Captain, IDA MALLORY. *Lieutenant*, BELL CLOKEY.

Sergeants.

First, BESSIE FULLER. *Second*, HARRIET CHILDS.
Third, MABELLE WHITNEY.



Affinities.

EDNA FRANK	⊂	KATHERINE JENCKS.		
FLORENCE EBERSOLE	U	ANNIE MAE PINKHAM.		
WINIFRED KNIGHT	⊃	NELL CHASE.		
ELIZABETH WHITLEY	∩	CALLIE LE SEURE.		
MABEL GOODWIN	∪	HELEN EBERSOLE.		
ELLA EBELING	∩	HELEN HOWES.		
RUTH SKINNER	U	FLORENCE SMITH	⊂	GRACE FOSTER.
EDITH EBERSOLE	⊃	FONNIE DAVIS.		
JOEL LAPOWSKI	U	MARIE BIDDLE.		
ELLEN MCGREW	⊂	LAURA CHASE.		
HELEN ORCUTT	∩	EO SCHRAM.		
EVA BADET	⊂	BEATRICE SLACK	⊃	MISS BATES.
BERTHA MANCHESTER	⊃	JOANNA DEERING.		
HARRIET EMERICK	∪	EDITH BALDRIGE.		

Questions and Answers.

(ADOPTED FOR THE POST-GRADUATE COURSE AT LASELL.)

Are there any other societies at school?

Oh yes; there are the C. P.'s.

Who are they?

The choice spirits of the school, taken in regardless of color or previous condition.

What is the object of the society?

To hoe in heavy—and “quit splashin’.”

When do they meet?

At every meal.

Do they elect officers?

Oh yes; the presidents and the *executive committee*.

What are the qualifications for presidency?

Anyone who lives up most to the rules and regulations.

What are the rules?

Can't say. They are not adapted to common minds.

How do they vote?

By all in favor answering “Me.”

Who, then, is that “old boy” who always says “no”?

Oh, that's “Contrary-minded.”

One of them never seems to pay any attention to what's going on. Is that "Feeble-minded"?

No. That's "Absent-minded." She's moved now. She *was* one of the original G. C. P.'s.

What do you mean by the G. C. P.'s?

"Ha, ha! That's telling." You cannot always sometimes tell what is concealed therein.

Is there any sense to this performance?

Not a bit. It is used merely to pass away the time between the arrival of the soup and the candy predicted by Our False Weather Prophet and that never materializes.



A Rap (rmand): (9:45)



Glee Club.

ANNIE MAE PINKHAM *President.*
HELEN EBERSOLE *Secretary-Treasurer.*
FLORENCE SMITH *Assistant Accompanist-Critic.*
BESSIE DRAPER *Librarian-Manager.*
ETHEL HOOK *Accompanist.*
MISS BATES *Director.*

First Soprano.

MABEL BLAGUE
GEORGIE DUNCAN.
ANNIE MAE PINKHAM.
KATE WHELDON.

Second Soprano.

ISABEL BLACKSTOCK.
BESSIE DRAPER.
HELEN EBERSOLE.
BERTHA HAYDEN.

First Alto.

MISS BATES.
LOUISE BROWN.
RUTH SKINNER.
SARAH SOULE.

Second Alto.

LAURA CHASE.
JANET GRIFFIN.
CHARLOTTE STRONGMAN.
LUCILLE ZELLER.



Mandolin Club.

JOEL LAPOWSKI *Leader.*
IDA MALLORY *Accompanist.*

First Mandolins.

MARIE BIDDLE.
HELEN EBERSOLE.
CARRIE GEORGE.
JOEL LAPOWSKI.
CALLIE LE SEURE.

Second Mandolins.

GRACE BULLOCK.
EDITH SISSON.
RUTH SKINNER.
DELIA TRIPP.

SENIOR STATISTICS.

NAME.	What Writers Say of Them.	Favorite College.	Nickname.	Supé.	Is Fond of	Ought to be
Deering, J.	"She awoke one morning and found herself famous."	Amherst.	"Jonie."		Supes.	President of U. S.
Bullock, G.	"And yet I mean to learn."	Brown.	"Gracious"		Height.	Malted milk advertisement.
Chase, E.	"Dost thou think I care for satire or an epigram?"	Amherst.	"Nella."	E. Frank.	Buffalo.	Wholesale consumer.
Chase, L.	"The thoughts of youth are long, long thoughts."	Yale.	"Chase."	E. Sawyer.	Wellesley.	Cross.
Clokey, B.	"Fashioned so slenderly, Young and so fair."	Harvard.	"Dot."	N. Jones.	Chocolate éclairs.	?
Draper, B.	"Keep silent, good folk, and I pray you attend, For I am no common singer, you'll find in the end."	Yale.	"Squire."	I. Blackstock.	Washington, D. C.	In Grand Opera.
Douglass, C.	"There's no living with you or without you."	Princeton.	"Cornie."	M. Biddle.	Fun.	A comedian.
Ebersole, F.	"The choicest goods come in small packages."	University of Cincinnati.	"Tottie."	E. Ebersole.	Sleeping out.	As tall as Annie Mae.
Duncan, G.	"One mind in all things."	Yale.	"Capt."	I. Mallory.	Bessie.	Always together.
Fuller, B.	"Done to death by slanderous tongues."	Yale.	"Betsy."	M. Whitney.	Georgie.	A missionary.
Goodwin, M.	"Thou who hast the fatal gift of beauty,"	Yale.	"Blackeyed Susan."	E. Clemens.	Conventions.	
Hewson, L.	"Loquacity itself."	Harvard.	"Cutie."	L. Armstrong.	"Peanutine."	A Mme. Yale.
Howes, H.	"Tis said swans sing before they die; Would some could die before they sing."	Yale.	"Floss."	J. Lapowski.	Hair decorations.	A society leader.
Hayden, F.	"None but herself could be her parallel."	Harvard.	"Kate."	M. Pooler.	Argument.	An actress.
Kendrick, K.	"I'm over young to marry yet."	Springfield High School.	"Pygmy."	J. Lapowski.	Mice!	Easier on Frank.
McGrew, E.	"Pray, do not fall in love with me."	Harvard.	"Teed."	M. Pooler.	A frat, pin.	Less Amused.
McClure, E.	"Where words are scarce, they are seldom spent in vain."	Princeton.	"Hat."	W. Knight.	A. D. more than B. C.	A good A Dder.
McGregor, H.	"Smooth runs the water, where the brook is deep."	Yale.	"Crissy."	H. Orcutt.	Visiting Ruth.	A "barker."
McLean, C.	"Is she not a modest young lady?"	Yale.	"Mem."	F. Leavitt.	Facts about the Sistine.	A racer.
Mann, M.	"Thou pretty child, why weepst thou?"	Tech.	"Jack."	C. Le Seure.	Callers, [na].	Ass't bank clerk.
Pinkham, A. M.	"For French of Parys was to hire unknowne."	U. Michigan.	"Nettie."	B. Hayden.	Singing.	A bride.
Ramsdell, M.	"Deeds not words."	Cornell.	"Row."	M. Gilbert.	"Mehit."	Speaker of the House.
Rouse, A.	"Better late than never."	Harvard.	"Amy."		Quiet.	A human cyclone.
Upham, M.	"And still the wonder grew, that one small head could carry all she knew."	Yale.	"Syc."		Sleep.	A Daniel.
Welty, B.	"How terrible it would be if you were a saint."	O. S. U.	"Boy."		Knowledge.	A Webster.
Wheldon, K.					Griming.	A "nigger."

Our Seniors.

WHO is it every Monday goes to town?
Our Seniors.
Is always invested with black gown?
Our Seniors.
Who at chapel sit in front,
Of all blame they bear the brunt?
Our Seniors.

Who is it are expected the school to carry?
Our Seniors.
And at one common table do make merry?
Our Seniors.
Who have "supers" as their right,
Can see callers Saturday night?
Our Seniors.



Second Series of the Tribune Primer.

(WITHOUT APOLOGIES TO THE AUTHOR OF THE FIRST SERIES.)

DO you see that long building on a hill? Well, that is a door, is it not, under that rain-shed? Yes, that is the "Front Door." Do people ever reach that "Front Door"? Yes, some, after frantic endeavors to climb that steep hill in front of it.

Do you see that little window in the hall with a light over it? Do you see those girls before it? Wait a moment and you will see those girls try to kill one another. Never mind, for you will soon see the victors happily bearing off their spoils. Their killed and wounded comrades, you ask? No, no; their mail.

Is this a table? Yes, this is a dining table. There is a cloth on this table and dishes on the cloth. Is there anything in those dishes? Yes, but we know not what to call it.

Do you see that tumbler? It has an envelope over the top of it and on this envelope rests a spoon. If the girl gets thirsty can she drink its contents? Safely; it is just water. Some may tell you it is medicine. They are mistaken.

From whence come all those riotous sounds of merriment? Do you not know? Why, this is Friday. Some children are very interested in revising Shakespeare's tragedy of "Hamlet" to a pleasing comedy.

What is this piercing bit of sarcastic matter clothed about in the semblance of a smile? This is a squelch. Alone? Never! They always come in bunches.

“I Cannot Tell What the Dickens His Name Is.”

“SHE was the loveliest of women, with eyes of azure, clear as the waters of a brook laughing in the summer sun;” “her cap of velvet could not hold the tresses of her hair, that fell in masses down her neck.” But “her innocence was betrayed by falsehood and base sorcery.” To the king, as judge, she said, “On you, my lord, with anxious fear I wait, and from your judgment must expect my fate.” “Heaven is above all yet; there sits a Judge that no prince can corrupt.” I did no murder. “Oh, keep me innocent!” “My voice is still for battle”—“trial by battle!” So a champion comes,—“his sunny locks fell on his temples like golden fleece,” “his face the index of a feeling mind,” his dress of azure and gold. “The midday brought the signal-sound of strife”; “the combat deepened”—“strife and thrust and flash and cry”—the traitor wounded fell. And so he of the fair hair wooed her of the blue eyes, and said to her: “A heaven on earth I have won by gaining thee.” “Be silent and safe” one short year; ask not my name or country—“silence has many advantages.” So he found “how much the wife is dearer than the bride.” But, breaking her vow, she questioned him until in sorrow he said, “‘Persuade me no;’ to you I am lost.” So he who “came like shadows, so departed.”

“He came like a dream in the dawn of life,
He fled like a shadow before its noon;
He is gone, and my peace is turned to strife,
And I wander and wane like the weary moon.”

“What so tedious as a twice told tale?”

E. M. E., '03.

Missionary Society.

President MABEL GOODWIN.
Vice President ISABEL BLACKSTOCK.
Secretary FONNIE DAVIS.
Treasurer IDA MALLORY.

EXECUTIVE COMMITTEE.

MISS PACKARD. BESSIE DRAPER.
HATTIE MCGREGOR.



Christian Endeavor Society.

President NELL JONES.
Vice President LAURA CHASE.
Secretary MARY BUFFINTON.

LOOKOUT COMMITTEE.

FONNIE DAVIS. HELEN EBERSOLE.
CLARA McLEAN.

PRAYER MEETING COMMITTEE.

GRACE FOSTER. BESSIE FULLER.
GEORGIE DUNCAN.

MISSIONARY COMMITTEE.

MABEL GOODWIN. HATTIE MCGREGOR.
ELLEN CHASE.

MUSIC COMMITTEE.

MABEL WHITNEY.



SHE has earnest eyes of gray,
Tender, true and jolly,
Dark brown hair, and dimples deep;
We call this maiden, "Polly."

But deeper than those dimples are,
More subtle than her eyes,
Is the smile she greets Professor with.
He is young, and *thinks* she's wise.

Looking Backwards.

“Men’s faults do seldom to themselves appear.”

Famous hatchets.—Carrie’s and George’s.
French class.—“Is my mother a codfish?”

THOSE ANSWERS IN HISTORY CLASSES.

“Wilhelmina is Emperor of Holland now.”

“Diogenes was the man who lived in a barrel.”

“Ovid wrote ‘Legends of Women.’”

“What temple was erected in the Forum? The Temple of
Morals.”

“Juno was a famous man worshiped in Augustus’ reign.”

“The Julian Emperors were those who followed Alexander.”

In Literature.—C - - m-n-: “I think ‘In Memoriam’ was written in
1933.”

First Girl.—“Where are you going?”

Second Girl.—“Up to the studio to see Miss Miller burn” (wood).

Room—. L - - a-.—“I just love this hour.”

A - - - e-.—“So do I. What time is it?”

A Senior.—“How do spell characteristic, Miss Adams?”

Another one.—“The Hindoos never bring anything of violence into their drama such as eating, drinking and fasting.”

E.—“You are a docile staircase.” Her French for “scholar.”

Why is Marionette like the king of Piedmont?

Because they both called for the almanac.

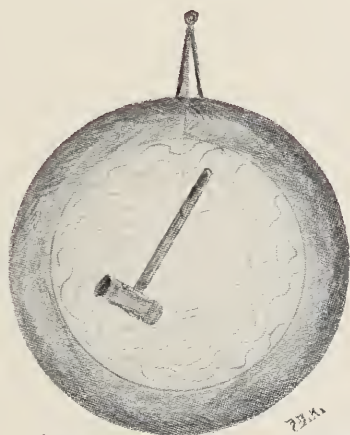
Freshman.—“Are we allowed to have callers Saturday nights?”

Sophomore.—“Look on the ‘Guide to Life.’”

“Is this the way to Lasell Cemetery?”

“No; you have to die first.”

In Civil Government.—“At a table sat some young men all covered with papers.”



“AN EYE-OPENER”

Fables.

The Banquet.

HUNGER, one day, was strolling through the Atmosphere, and chanced to lodge in a certain Corridor of a Girls' School. The Inmates of one of the Rooms made Preparations to banish the unwelcome Guest, when all at once many of the provisions Disappeared?

Moral: Don't room in Crazy Alley.

A Door Girl.

Once a Young Maiden became Hard Up, and resolved to sell some of her Personal Property. She was on the High Road to Prosperity when she met with a Rebuff.

Moral: Before starting on a business venture put your room in order.

The M. of U.

A Troupe of Actors wished to give a Play which would be pleasing to the Critics and win Renown and Recognition for themselves. Its first Performance was proving a Stupendous Success, when all at once Panic struck them, and they fled to Tall Timber.

Moral: Remember the saying, "A dropped foil shows which way the girls go."



Index.

	PAGE.
DEDICATION	7
PREFACE	9
BOARD OF EDITORS	11
FACULTY	12
SENIOR CLASS	17
SENIOR CLASS HISTORY	19
JUNIOR CLASS	25
JUNIOR CLASS HISTORY	27
SOPHOMORE CLASS	29
HISTORY OF THE SOPHOMORE CLASS	30
FRESHMAN CLASS	33
HISTORY OF THE FRESHMAN CLASS	34
SPECIALS	36
PREPARATORY CLASS	39
SONG OF THE SUPES	40
IT'S LASSELL	41
"ABANDON HOPE, ALL YE WHO ENTER HERE"	42
"KEEP OUT! THIS MEANS YOU"	47
LASELLIA CLUB	49
BRIGGS'S WILL	51
THE SONG CRAZE	53
S. D. SOCIETY	55
"THE WORLD IS FULL OF RUBS"	57
CANOE CLUB	61
INTRODUCTION	62
KODAK GIRL	63
GYM. GIRL	64
MILITARY GIRL	65
SWIMMING GIRL	66

	PAGE.
GOLF GIRL	67
SOCIETY GIRL	68
DRILL	71
AFFINITIES	73
QUESTIONS AND ANSWERS	74
GLEE CLUB	77
MANDOLIN CLUB	77
SENIOR STATISTICS	78
OUR SENIORS	79
SECOND SERIES OF THE TRIBUNE PRIMER	80
"I CANNOT TELL WHAT THE DICKENS HIS NAME IS"	81
MISSIONARY SOCIETY	82
CHRISTIAN ENDEAVOR SOCIETY	82
"POLLY"	83
LOOKING BACKWARDS	84
FABLES	86

WE GIVE A SPECIAL DISCOUNT

TO all those attending Colleges and Schools, both on individual and group pictures, made either at our studio or elsewhere. The same amount of care is taken with College and School work as with our private studio trade. We have all the latest and most up-to-date styles in CARBON, PLATINUM and ART FINISH. We make a specialty of MINIATURES on Ivory, Porcelains, Water Colors, Sepias, in fact everything in this line. We have constantly on hand a large assortment of FRAMES of every description. We guarantee perfect satisfaction.

Elmer Chickering, The Leading
Photographer

21 WEST STREET, BOSTON.

ADVERTISEMENTS

1902

OUR NEWLY FASHIONED
LADIES' SUITS AND COATS
LADIES' SHIRT WAISTS
AND GOWNS

ALSO

INFANTS' WEAR

ARE NOW ON SALE AND WE CORDIALLY INVITE
YOU TO INSPECT THEM.

A. SHUMAN & CO.

SHUMAN CORNER
BOSTON

H. M. CHILDS

Dry and Fancy Goods

Stationery, China Ware and Novelties.

Agent for

LEWANDO'S CLEANSING, DYEING
AND LAUNDRY.

289 Auburn Street, Auburndale.

Morgan's Art Store

29 Moody Street, Waltham, Mass.



SHREVE, CRUMP & LOW Co.

Jewelers and Silversmiths

147 TREMONT STREET, BOSTON

DESIGNS SUBMITTED FOR CLASS AND
SOCIETY PINS.

STATIONERY OF THE FINEST GRADES CALLING CARDS
INVITATIONS, ETC. UMBRELLAS.

REPAIRING OF FINE JEWELRY.

ART NEEDLEWORK

LASELL PILLOWS



E. J. STATES

175 TREMONT STREET, BOSTON



The ^{Two} Track Trunk Line of New England

forming the connecting link between
BOSTON ^{AND} ^{THE} **WEST** through
the magnificent region known as the
BERKSHIRE HILLS to Albany,
Buffalo, and the West via **NEW**
YORK CENTRAL LINES.

Daily Service.

To ALBANY,	8 Trains
To BUFFALO,	8 Trains
To CHICAGO,	7 Trains
To CLEVELAND,	6 Trains
To NEW YORK CITY,	4 Trains

Perfect Track. Train Equipment Unsurpassed. Superb Service.

A. S. HANSON, G. P. A., Boston, Mass.
J. L. WHITE, G. P. A., 366 Washington Street, BOSTON, MASS.

Hull, Stickney & Twitchell,

Successors to

LAWRENCE, WILDE & CO.

Makers of Fine Furniture and Interior Decorations.

38 TO 48 CORNHILL, BOSTON.

E. F. MCNAMEE,

Fine Neckwear, Shirtwaists
and Millinery.

330 BOYLSTON STREET,
BOSTON.

CHANDLER & CO.,

Winter Street, Boston.

Exclusive Agents for the Celebrated
DUCHESSE GLOVE.

The Glove which for beauty and durability has never
been equalled.

MADE WITH TWO CLASPS, PRICE \$1.50.

A Glove for all occasions.

BASKET BALL Develops Muscles.....

BROMFIELD DEVELOPER

DEVELOPS FILMS. Try us and see for
yourselves.

BOSTON CAMERA EXCHANGE,
7 BROMFIELD ST., BOSTON.

Developing and Printing for Amateurs.
Mail orders promptly attended to.
Now be Good!

ADVERTISEMENTS

We are designing and making continually fraternity devices class and club pins flags, etc., that bear the stamp of artistic originality. They are different with a reason. Come to Bent & Bush, 387 Washington St., Boston



COTRELL & LEONARD

472-478 BROADWAY, ALBANY, N. Y.

MAKERS OF THE

CAPS AND GOWNS

TO THE AMERICAN COLLEGES AND ADVANCED
SCHOOLS FROM THE ATLANTIC TO
THE PACIFIC.

ILLUSTRATED BULLETIN, SAMPLES, ETC.,
UPON APPLICATION.

RICH GOWN FOR TRUSTEES AND FACULTIES,
THE PULPIT AND BENCH.

C. F. HOVEY & Co.

IMPORTERS AND RETAILERS OF

DRY GOODS

BOSTON

33 SUMMER STREET AND
42 AVON STREET

PARIS

12 RUE AMBROISE THOMAS

**Tickets and
Tours *Everywhere***

¶ Before purchasing your tickets for business or pleasure, it would be for your interest to call at our office or supply yourself with our Traveller's Guide.

¶ We will give you full information, and perhaps save you money.

¶ TOURS to all the *principal resorts*, both Summer and Winter

RAYMOND & WHITCOMB CO.
296 Washington Street, Boston, Mass.

In College Life

CREPE PAPER IS INDISPENSABLE

For Receptions.

¶ When draping windows, walls and tables with class colors, remember Crepe Paper is not as expensive as other hangings and just as effective.

For College Frolics and Masquerades.

¶ Hats and gowns, favors and flowers are easily made from Crepe Paper and are exceedingly pretty and unique.

For Class Spreads.

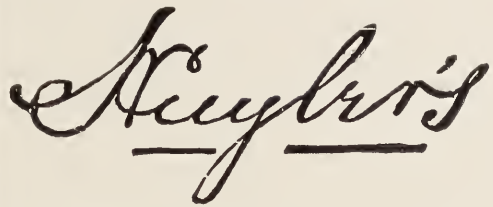
¶ We have the largest and prettiest line of Crepe Paper Napkins on the market.

Dennison's Crepe Paper

is the only fabric which, for colors, designs, strength and effectiveness, will answer all your needs.

Dennison Mfg. Co.

BOSTON NEW YORK PHILADELPHIA
CHICAGO CINCINNATI ST. LOUIS



Pure
Fresh
Delicious

Fancy Baskets
and Boxes suitable
for Presents

**CHOCOLATES AND
BONBONS**

146 TREMONT STREET, BOSTON

BAGASSE Send a postal with address and we will return an interesting folder giving full information relating to a **NEW INDUSTRY**, in which you can advantageously make yourself personally interested. Address DEPT. 3, ELIOT & CO., 17 MILK STREET, BOSTON.

Stubenrauch's Vienna
Bakery
and
Restaurant

181 and 183 Summer Street, near South Station
and 24 Park Square, BOSTON.

CHOCOLATES AND BONBONS

HORGAN, ROBEY & CO.

Importers and Dealers in

Photographic Supplies

PICTURES AND PICTURE FRAMES

Lenses, Portrait Cameras, View Cameras, Hand Cameras, Dry Plates, Printing-Out Papers, Photographic Chemicals, Photographs, etc., Picture Frames, Mouldings, Fancy Leather Frames, Cabinet Frames, Etchings, Picture Cord, Engravings, Glass, Etc.

34 BROMFIELD ST., BOSTON, MASS.

C. A. W. Crosby & Son,

Jewelers and Silversmiths,

*474 Washington Street,
John D. Crosby. Corner of Avon Street,
Boston, Mass.*

Telephone No. 16 Oxford.

Every Musical Want

¶ of music-lovers supplied at
once from our ten-story stock

OLIVER DITSON CO.

451 Washington Street, BOSTON





