

Historic, archived document

Do not assume content reflects current scientific knowledge, policies, or practices.

For Reduced Money Saving Prices on Garden and Flower Seeds, Send for 1924 Spring Catalog.

Ferguson's Seed Current

Issued every time the moon changes, by FERGUSON SEED FARMS to give the latest gossip about Price, Quality and Value in Seeds
All seeds sold on FERGUSON'S STRINGLESS GUARANTEE of "Satisfactory Seeds or Money Back",
as given in our illustrated catalog. Copy sent free on request.

Prices Effective
Jan. 15, 1923

Send Orders to Ferguson Seed Farms, Sherman, Texas

Volume 6
Number 45



How to Judge Seeds and Seedsmen

"HOLD ONTO THE MONEY," is too often taken to mean economy. True economy is not merely saving money foolishly, but spending money wisely. Invest your money and your labor wisely. Be sure you are right. Then go boldly ahead. Don't allow yourself to be scared out of real profit, or into planting "Brindle Cow Seed" by the slight extra cost of Bred-Up Pedigreed Seed. Hesitating, waiting until all doubts are removed, doubting yourself and everybody else, to such an extent that you "do nothing," will get you nowhere. You must ACT, and act with positive information. The seed season is here NOW and your seed policy must be settled TODAY.

Planting "Brindle Cow" Seed is about like plowing a poor team to a poor plow on a poor soil. Yet many farmers pauperize their labor and decrease the earning power of their land by planting un-improved, poorly-selected, run out strains of unsuitable varieties.

The Questions Asked by farmers indicate that they are not always discriminating seed buyers. They are too often content to know merely that seeds have a popular variety name, are apparently sound and capable of good germination. This is all good,—as far as it goes.

Finding Out The Profitable Varieties is not a difficult undertaking for a bonafide Seed-Testing, Seed-Breeding, Seed-Growing, Seed-Farm, but breeding-up Improved Strains of these known good varieties is a slower and more difficult undertaking. Three to ten years are usually required to even get well started. I say positively that if you expect to plant "Better Yielding Seed," you must breed-up the seeds yourself, or depend upon the ability and reliability of some one else to supply you.

All The Arguments usually advanced to encourage the use of "better seeds" depend for their value upon the long continued patient work of some competent person at some definite time and designated place who has in some exact practical way done something to separate seeds of individual plants producing POOR quality and LOW yields from plants producing GOOD quality and LARGER yields.

For The Sake of Safety and Certainty in seeking "good seeds" or "improved seeds" of good varieties for your farms you should have enuf definite information to know if the seeds are from,

- (1) A seed breeder (the real seedsman)
- (2) A mere seed propogator, (grower,) or
- (3) A seed dealer (merchant).

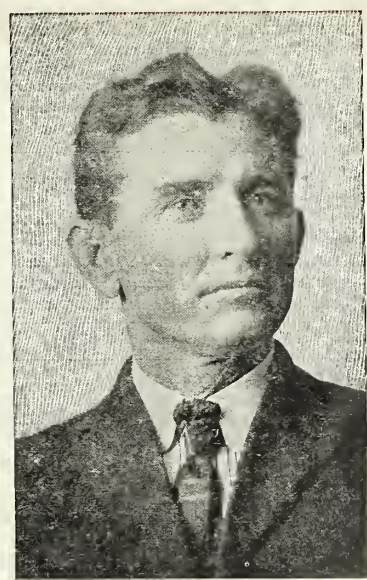
Each has an important function in the development, propogation, and distribution of really improved strains of seeds. However, all your hopes for larger crops must go back to the seeds since they were improved by the seed breeder. Therefore, satisfy yourself on these four simple questions.

Put 4 Questions to Your Seed Sacks

1. Who bred-up the seeds and who grew them and what is his reputation for ability, and responsibility as a seedsman.
2. Where he lives, where the seed improving work is, or was done and where the seeds were grown and prepared.
3. When he first improved the seed, and has he continued to improve his seeds each-and-every-year thereafter, and how long.
4. How or by what "method" is he improving his seeds. You are entitled to definite explanation of just what has actually been done, and also the proof from Experiment Station tests that he has actually combined scientific theory and practical application to produce better yielding seeds.

20 Years of Seed-Service

A Record of Unusual Accomplishments



Our Answers, to these searching questions are found in a record of 20-odd years devoted to an idea and an ideal of seedsmanship that has greatly increased the "created wealth" made by the brain and muscles of Southwestern farmers. Note this record of four noteworthy accomplishments (on page 4.)

No other seedsman in the Southwest has done as much to improve the seeds of the Southwestern farmer. This is not a mere "claim", but a record of results proven by more than 50 Experiment Station tests in Texas, Oklahoma, Mississippi, New Mexico and other states.

Send Orders to FERGUSON SEED FARMS, Sherman, Texas.

**Ferguson's Original
Bred-Up Strains**

Cotton Seed

**Higher Field Yields
Better Gin Turn-outs**

Proven Highest Yielding in Experiment Station Tests

They are OUR Seed. They have been Bred-Up for 20 years by A. M. Ferguson. They are Grown under his supervision, as well as ginned, cleaned, stored, tested, sacked and shipped. If they are not GOOD SEED you know where the neglect belongs. Here are brief descriptions of the three big best yielding varieties.

Ferguson Triumph No 406, our leading variety, is an improved high-bred strain of Mebane Triumph that has regularly yielded 100 to 393 pounds more per acre than the best Triumph seed coming out of South Texas, having made Highest Yields over 40 other varieties in Government test. Gives 38% to 42% lint turn-out at the gin, has big bolls, storm-proof and easy to pick. Especially desirable under severe boll weevil conditions. Staple runs 1 1-16 to 1 1/8 inches with strong body, according to soil and season.

New Boykin. This splendid variety was originated by A. M. Ferguson in 1913. In Government tests it see-saws with Ferguson Triumph No. 406 for highest yields. While it lints out slightly better at the gin, the former has noticeably better staple. Because of it's extra high yields under boll weevil conditions (due to early rapid fruiting habits) it has been made a Standard variety for many communities. Nothing equals it for large Storm Proof Bolls, and high gin turn out. Supply limited.

Lone Star No. I. B. 607. This is the latest Strain of Lone Star originated by A. M. Ferguson. It not only has all these good qualities that has made Lone Star a recognized standard variety for the Southwest, but is earlier and more rapid fruiting. Ferguson's strains usually make the largest yields in Experiment Station tests. It has very large bolls, gives a gin turn out of 37% to 42% lint. Has the best lint of any big boll variety known.

Prices on Cotton Seed

Seed are put up in 4 bu. bags with Ferguson's Certificate of good breeding sealed onto each bag. These prices are cash with order for our stations, FREIGHT PREPAID to Texas and near-by Oklahoma points.

Regular Certified Pedigreed Seed	Price per bu. 4 bu bags		
	4-52 bu.	56-96 bu.	100 bu. up
Ferguson Triumph No. 406	\$2.75	\$2.65	\$2.50
Lone Star No. 607	2.75	2.65	2.50
New Boykin	See prices quoted below.		

Elite Certified Pedigreed Seed	Price per bu. 4 bu bags		
	4-52 bu.	56-96 bu.	100 bu. up
Ferguson Triumph No. 406	\$3.75	\$3.65	\$3.50
Lone Star I. B. 607	3.75	3.65	3.50
New Boykin	4.00	4.00	4.00

**Proven Highest
Yielding**

Ferguson No. 71 Oat

**Rust Resistant
Smut-Free**

An Improved High-Bred Texas Rust Proof Oat

Ferguson's No. 71 Oats have been grown all over the Southwest for 13 years. Everybody says, "Great Improvement over the common un-selected, country-run, field-run, thresher-run, un-graded, un-treated, smut infested Texas Red Oat." Hundreds of customers say Ferguson's own Certified Pedigreed seed has many positive money-making advantages:

- (1) Produces 10 to 20 more bushels per acre than common red oats.
- (2) Greater resistance to red and black rust.
- (3) Practical freedom from smut.
- (4) Greater hardiness against winter killing.
- (5) Better stooling habits, requiring less seed per acre.
- (6) Produce more grain and less straw, requiring less twine per hundred bushels of threshed grain.
- (7) Greater resistance to drouth.
- (8) Practically free from mixtures of inferior black oats, white oats and others that lower the yield and quality of the grain.

Ferguson's Certified Pedigreed Seed Oats are not only Bred-Up, but also double re-cleaned and graded, removing trash, chaff and pin-oats, then given formaldehyde anti-smut treatment according to Government methods, thus practically eliminating the damage caused by oat smut. This advantage alone causes most oat growers to gain more than the entire cost of High Quality seed

When you pay out good money for good seeds you want to know that you are getting what you want, i. e.—Seeds that make you bigger crops. Here is reliable, competent information about the better yields made by Ferguson No. 71 Oats.

In the 1921 Tests, the Best and Second Best yielding oat at the Texas Experiment Stations at Denton and Temple was Ferguson No. 71 oat.

In 1921 Ferguson No. 71 Oat made 102 bushels per acre—the Highest yield—at the Experiment Station in New Mexico. The next highest was 13 bushels less. It was likewise in the "Highest Yielding" class at the Mississippi Experiment Station.

In 1919 at Fayetteville, Arkansas, the Experiment Station had 34 varieties of oats in a "fall seeding" and a "spring seeding" test. Ferguson No. 71 Oats made the Highest yields in both tests.

It costs no more to plant, cultivate, harvest and thresh High Quality grains than common sorts. In fact, it costs less per bushel to produce from good improved High Yielding Seed. Our customers report that **Ferguson No. 71 Oats** from Selected Pedigreed, smut-free graded seed yields from \$10 to \$25 more per acre than common oats. See prices on opposite page.

We make Seed Oats a specialty, both our own Bred-Up Strain of FERGUSON NO. 71 OATS, and also selected lots of **Texas Red Rust Proof**. All are Re-Cleaned and Graded in our Specialty Equipped Seed Plant and given the **Anti-Smut Treatment** recommended by the Government. Send for Special circular on FERGUSON NO. 71 Oats for more complete information.

Ferguson's No. 71 Oats.	Pedigreed Seed	Put Up in 5 Bu. Bags	
		10 Bu.	100 Bu. up
Texas Red Rust Proof	-From inspected Fields	.95	.85
	-Selected Fancy Seed	.85	.80
	-Country Run Oats and Feed Oats, Car lots		Ask

PLANTS—Postpaid, Free

Prices are for each variety, usually put up in bundles of 100 each, sent fully postpaid. They are good strong, well grown plants, properly "hardened off" for transplanting, and we make you the judge. If not satisfactory, we will replace free of charge or refund the purchase price. It is best to order plants a week or ten days ahead, stating when you want them mailed out. Special prices on large orders by express.

Postpaid Prices, Subject to Change	Per	Per	Per	Per M	Per M
	100	500	1000	5000	10,000
FROST PROOF CABBAGE PLANTS—Nov. to May —Jersey Wakefield, Charleston Wakefield, Succession, Flat Dutch, Copenhagen Market and Collards	\$.40	\$ 1.25	\$ 2.00	\$ 1.85	\$ 1.75
BERMUDA ONION PLANTS. Dec. to April. —Yellow Bermudas and and Crystal White Wax Bermudas.	.35	1.00	1.75	1.60	1.50
TOMATO PLANTS Ready About March 1 to Sept. 1 —June Pink, Acme, McGee, Dwarf Champion, Ferguson's Blackland, Earliana	.35	1.25	2.25	1.85	1.75
SWEET POTATO SLIPS—Ready about April first. Prices subject to change. Porto Rico and Nancy Halls	.60	1.50	2.50	\$ 2.00	Ask

Garden Seeds FLOWERS, ROOTS, BULBS, ETC.

**See Ferguson's Garden
Seed Price List No. 98 for
money saving prices on
packet and bulk seeds in
quantity. They are
"Ferguson's Tested Seeds."**

New 1924 Illustrated Catalog sent FREE to you and your friends

Ferguson's Own

SEED CORN Certified Pedigreed Seed

A. M. Ferguson is the only person in the entire Southwest who has even attempted to develop new and better varieties of Seed Corn for the Southwestern climate. The work was started in 1900, -23 years ago. At that time there were no named high-bred native varieties recognized by seedsmen or farmers. Now the three varieties originated by Ferguson are generally recognized as the highest yielders for Oklahoma, Texas, Arkansas and Louisiana. They are proven such by the Experiment Station tests in these states:

Surcropper, an early quick maturing drouth resisting sure-crop white corn, having the drouth resisting qualities of June corn and the earliness of northern corn. Is now a standard field corn for six Southwestern States. Generally considered best for thin lands, for late spring or summer planting, and a better summer corn than June Corn.

Chisholm, Ferguson's own original strain, a medium early white grained red cob variety. The ears are just the kind to please the "good corn" fancier. This is the best general purpose variety of white corn for medium to strong lands. Ferguson's original pedigreed strains have made the largest yields in many Experiment Station tests in Texas, Arkansas and Louisiana.

Ferguson's Yellow Dent, the most famous and widely planted large grained medium large eared variety of yellow corn known to the Southwest. For 10 years it has consistently made the highest yields over all other yellow corn varieties in Experiment Station tests in Texas, Arkansas, Louisiana and New Mexico.

Ferguson's Certified Pedigreed Seed.

"Regular" and "Elite" Certified Pedigreed Seed of the three varieties named above, represents the latest improved strains offered for sale. The seed are put up in sealed, branded bags. Look for the seals if you want the latest best high yielding strains. If any one offers you "Ferguson's Bred-Up Seeds" in un-branded bags without seals or certificates, please advise us. Ferguson's Seed Corn is from hand groomed ears, and machine graded for machine planters.

Selected Seed Corn

In addition to our own CERTIFIED PEDIGREED SEED we offer selected stocks of all the varieties usually sold by seedsmen when we can secure stocks of reasonable merit. "Selected seed" are not bred-up and are sacked in un-sealed bags. They may be one or more years removed from Ferguson's Certified Seed. We do not offer

any northern grown field corn, as such seed should not be Planted in the Southwest. All our seed corn is selected from native grown stocks.

January Prices on Seed Corn:

Ferguson's Regular Pedigreed Seed	Price Per Unit, -Each			
	Peck	½ Bu.	1 Bu.	2-20Bu
Chisholm	\$1.25	\$2.00	\$3.50	\$3.25
Surcropper	1.25	2.00	3.50	3.25
Ferguson Yellow Dent	1.25	2.00	3.50	3.25

Ferguson's Elite Pedigreed Seed	Price Per Unit, -Each			
	Peck	½ Bu.	1 Bu.	2-20Bu
Chisholm	\$1.50	\$2.50	\$4.50	\$4.25
Surcropper	1.50	2.50	4.50	4.25
Ferguson Yellow Dent	1.50	2.50	4.50	4.25

The "cost per acre" for High-Bred, Seed corn descended from breeding blocks is but slightly more than "selected" seed of the same varieties, usually 15 to 25¢.

The producing or yielding quality is usually several bushels more. We are quoting "selected seed corn" below because we will not be able to fill all orders for "Certified Seed" and wish to assist our customers to get the "next best" seed.

Selected Graded Seed (White Varieties)	Price Per Unit, -Each			
	1 Pk.	½ Bu.	1 Bu.	2-20 Bu
Chisholm, Fancy	\$1.00	\$1.60	\$3.00	\$2.75
Surcropper Fancy	1.10	1.75	3.25	3.00
Giant Red Cob White	.90	1.50	2.75	2.50
June Corn	.90	1.50	Prices Later	

Selected Graded Seed (Yellow Varieties)	Price Per Unit, -Each			
	1 Pk.	½ Bu.	1 Bu.	2-20 Bu
Ferguson Yellow Dent, Fancy	\$1.00	\$1.60	\$3.00	\$2.75
" " " Choice	.90	1.50	2.75	2.50
North Texas Yellow	.90	1.50	2.75	2.50
Giant Yellow	.90	1.50	2.75	2.50

Selected Graded Seed (Colored and Miscellaneous)	Price Per Unit, -Each			
	1 Pk.	½ Bu.	1 Bu.	2-20 Bu
Singleton Strawberry	1.10	1.75	3.25	3.00
North Texas Strawberry	1.00	1.60	3.00	2.75
Bloody Butcher	1.00	1.60	3.00	2.75
Squaw, Blue Grains	1.25	2.00	3.75	3.25

TERMS and PRICES

Terms, are cash with order. If desired sent C. O. D. please send one-fourth of the amount with the order. All accounts, or claims resulting from sales are payable in cash or satisfactory equivalent in Sherman, Texas.

These prices are subject to market changes and quantity discounts. Write us for special quotations or information on large orders.

Re-Cleaned, Graded, Tested Seed, unless otherwise noted, of the best stocks we can secure, are supplied on these quotations.

Prices on 10-lb lots are **Postpaid** to the 3rd zone. 5-lb lots allowed at the 10-lb rate.

Quotations on 50-lb and 100-lb lots are f.o.b. Sherman by express or freight collect.

Alfalfa and Clovers

Seamless Sacks Extra, 50c Each			
ALFALFA	10 lb	50 lb	100 lb
Ferguson's Standard	\$3.75	\$15.50	\$30.25
Southwestern Fancy	3.50	14.50	28.00
Choice, poor but honest			21.00
Hairy Peruvian	3.75	15.50	30.25

CLOVERS

Sweet Clover, White Blossom			
	10 lb	50 lb	100 lb
Southwestern Fancy	\$2.25	9.50	18.50
Ferguson's Stand'd	2.50	10.50	20.00
Crimson Clover	1.80	8.75	17.00
Alsike Clover	3.90	11.50	22.00
White Dutch, for lawns	6.50	30.00	59.00
Lespedeza or Japan Clover	2.50	12.00	23.50

Miscellaneous Seeds

	10 lbs.	50 lbs.	100 lbs.
Rape, Dwarf Essex	1.75	5.75	11.00
Sunflower, Mam. Russian	1.75	6.00	11.00

Legume Bacteria

Build Up Your Land. All Alfalfa, Sweet Clovers, Beans, Peas, Cow Peas, Sweet Peas, Etc. should be inoculated with the proper bacteria before sowing the seed, a different culture for each crop. Name the crop and we will send the right culture.



Nitragin Cultures.

Garden Size	20c
Quarter Bu. Size	40c
Half Bushel Size	60c
Bushel Size	\$1.00

Grass Seeds

	Price per 10 lb	50 lb	100 lb
SUDAN, Fancy Seed	1.50	5.50	10.00
SUDAN, Fancy, Kansas			
Grown certified seed	1.50	6.75	12.00
Sudan, Prime, uncleaned			ask
Bermuda Grass	3.50	16.00	30.00
Rescue Grass	2.25	8.50	16.09
Kentucky Blue Grass	5.00	17.00	32.00
Johnson Grass	1.65	5.75	10.00
Lawn Grass, Mixture	6.00	27.00	50.00
Ferguson's Lawn Grass mixture in cartons for city lots, 50c each; 3 for \$1.25.			

Peanuts, Beans, Peas, Etc.

	Price per 10 lb.	50 lb.	100 lb.
Peanuts —Spanish			
—Selected Seed Stock	1.25	4.50	8.00
—Selected Recleaned	1.50	6.00	10.50
Cow Peas, Hippowill		Ask	
" " other varieties		Ask	

Millet

	10 lbs.	50 lbs.	100 lbs.
Golden or Big German:			
—Fancy, Western	.75	2.50	\$4.75
—Choice, Nice Seed			4.50
—Tennessee Seed in seamless sealed bags	1.00	3.25	6.25
Country Run, Recleaned	.75	2.00	3.75

Cane or Sweet Sorghums

Ask for current prices on large orders.

Fancy Recleaned Seed.	10 lbs.	50 lbs.	100 lbs.
Red Top, Fancy	.75	2.50	4.50
Orange	.75	1.75	3.25
Amber	.75	1.65	3.00
Mixed Sorghum for forage	.60	1.50	2.90
Honey or Japanese	2.50	4.75	9.00
Gooseneck or Seeded	2.00	4.75	9.00
Golden Rod, Best Early, heavy yielding mild fine flavored. Money back if not satisfied. 2 lb., 75c; 3 lb., \$1.00; 10 lb., \$2.50.			

Grain Sorghums

	10 lbs.	50 lbs.	100 lbs.
Hegari, Very Early	1.00	2.50	4.75
Milo, Dwarf Yellow	1.00	1.75	3.25
Kaffir, Dwarf white	1.00	1.75	3.25
Ferita, Slightly Mixed	1.00	2.00	3.75
Darso, Very safe and sure	1.25	2.75	5.25
Shallu, or Egyptian Wheat	1.25	3.25	6.00

Ferguson's Stringless Guarantee is "Satisfactory Seeds or Money Back". Read it in the catalog.

Ferguson's Bred-Up Strains Made Largest Yields.

Farmers' Experiences and Experiment Station Tests in six Southwestern States long ago demonstrated that the following varieties afford **Safety and Profit**. More detailed information is found in our 1924 Catalog.

Corn. We have originated the three varieties of corn most widely and generally planted by Southwestern farmers, namely **Surcropper, Chisholm, and Ferguson Yellow Dent.**

Oats and Wheat. We have developed or created, by the same positive scientific procedure, the recognized highest yielding variety of Texas Red Oats, known as **Ferguson No. 71 Oats**, and the only pure-bred strains of Mediterranean Wheat known to the soft wheat belt.

Cotton. And financially more important still as a contribution to the Wealth Creating Force of the Southwest, we have originated new varieties and better strains of old varieties of cotton that have made a consistent record of **Highest Yields** over all other varieties in numerous Experiment Station tests in four Southwestern States. (See Catalog for details.) Here are the varieties that have made the records for highest average yields over all others: **New Boykin, Ferguson Triumph No. 406, Lone Star No. 607**

Even Still More Significant Evidence of the persistent steady progress of scientific seed improvement is **The Record** made by Ferguson's latest strains of each of his varieties, regularly making more than Home-Selected seed raised by his former customers. It pays them to buy fresh stocks every year.

Such are Our Answers to the searching suggestions about **Who, Where, When and How.** Our catalog describes the methods

or processes by which our seeds have been improved, re-improved and Bred-Up from year-to-year, to where they may be sold as Ferguson's **Certified Pedigreed Seeds.**

And they Succeed on Farmers' Farms. Thousands of farmers plant "Ferguson's Seeds" and many regularly order fresh stocks every year, rather than to plant even second or third year seed. They find that "it pays."

Many Plant Un-suitable Varieties and don't know it. See the results of tests made by planting seeds from different farmer's planter boxes. The yields have varied as much as 400% Mr. Armstrong of Sherman, Texas, had a stock of Red Oats that he had proudly planted for 23 years. After planting Ferguson No. 71 Oats he wrote:

"I lost \$2,000.00 last year by not having all my crop in the latest improved seed." (See his letter in our catalog.)

Many Farmers Plant Run-Out Strains of Good Varieties and fail to realize that freshly Bred-Up seeds of the same varieties would add \$10. to \$20. an acre more to their crops.

Knowing These Conditions, My ambition is to continue to "exhort" and "preach" to overcome the indifferences that tolerates the use of poor run-out strains of even good varieties.

However, I never had much "faith" in "preaching" that was not accompanied by **effective work.** We shall continue in our 20-odd years work relying on scientific methods to produce good seeds of good strains of good varieties for the Southwest, even better ones when possible, and hope to continue to deserve the confidence and esteem of good men for "good work well done."—A. M. Ferguson.

Farmers' Variety Tests of Cotton

Put One On Your Farm and See if "Seeing is Believing"

I was raised on a farm. When 16 years old I went to an Agricultural College. As student, teacher, investigator and lecturer I was connected with this kind of activity for about 20 years. However, I laid my plans to become a private seed breeder about 1900, some years before I left regular university work.

Among the circumstances that led me to the change from a government paid "Professor" to a private "Seed-Breeder," as a business, was a **field-yield test** I made of the seed corn taken from the farmers' planter boxes in a Central Texas community. This was a carefully planned test of the seed actually selected or purchased by the farmers, on which they were "betting" a season's work. When planted in adjacent test-rows the yields varied from 17.3 to 47.8 bushels per acre, or a difference of 30.5 bushels per acre.

Yes Sire! Lots of those farmers were planting low yielding seed and did not know it! They were intelligent well posted farmers too. Some had paid big money for low-yielding seed corn. Now they are more intelligent about seed matters because of this test.

I Reasoned From These Results that there was a real public need, as well as personal opportunity for a real (emphacize the word **real**, please) Seed-Testing, Seed-Breeding, Seed-Growing, Seed-Farm, here in the Southwest. Then the idea was so new that it was a novel. There was only one other such undertaking in the U. S. at that time.

But The Question is Still With Us! "Are the farmers (including you) in your community planting poor varieties too, and don't know it?" If a dozen or more varieties are planted, possibly two or three are the better ones. Why the others? Incomplete or unreliable information?

Try A Farmers Variety Test, by planting a row of each kind of seed in adjacent rows. Ask your school teacher and County Agent to co-operate. Base your opinions on "Seeds and Seedsmen" by the results of field-yield-tests of the varieties and strains of seeds commonly planted. Such tests are not always satisfactory tests, but they are "worth while."

Seeds and Seedsmen must be judged by the reputation of the seedsman and the record of his seeds on farmers' farms and Station tests. See our catalog for information comparing the relation between **cost and value** in seeds. Remember all the time that Price is merely what you pay; Quality is what you want, and Value is found not in the seeds themselves, but **in the crops** they produce.

Results of Recent Farmers' Tests.

Below are the results of three such tests recently reported to us. We give the figures just as they came to us. They are reasonably consistent in showing that the highest yielding seeds came from Ferguson Seed Farms.

Mount Vernon, Texas, Franklin County. Two tests were arranged by County Agent, Roger F. Davis, on farms of C. N. Davis and Jim Payne. The figures give yields of pounds of Seed Cotton per acre.

Standing	Variety	Source	Payne's	Davis's	Average
1	NEW BOYKIN	Ferguson	286	319	302
2	Rowden	Rowden	278	296	287
3	Lone Star	Ferguson	-----	288	288
4	Lone Star	Bennett	254	-----	254
5	Kasch	Kasch	257	235	246
6	Webb	P. & H. Co.	247	233	240
7	TRIUMPH No. 406	Ferguson	273	200	236
8	Excelsior	Ferguson	208	264	236
9	Acala	-----	233	-----	233
10	Mebane Triumph	Mebane	241	209	225
11	Lone Star	Saunders	238	208	220
12	Half-and-Half	-----	-----	206	206
Average Yield of all Varieties			251	245.8	247.7
Difference, From Highest and Lowest			48	113	96

Sand Springs, Oklahoma, Carter County. On farm of T. C. Clark. Planted May 1923. No rains from planting until crop made.

Standing	Variety	Source of Seed	Seed Cotton Pr Acre
1	NEW BOYKIN	Ferguson Seed Farms	425 Lbs.
2	EXCELSIOR	Ferguson Seed Farms	418 "
3	FERGUSON TRIUMPH No. 406	-----	416 "
4	Oklahoma Triumph	-----	416 "
5	Mebane, Triumph	-----	415 "
6	Lone Star	Bennett	414 "
7	Rowden	-----	413 "
8	Improved Mebane	-----	405 "
9	Lone Star	-----	375 "
10	Acala No. 5	-----	306 "
11	B. S. Lone Star	-----	300 "
12	King	-----	270 "
13	Speer	-----	261 "
14	Trice	-----	225 "
15	Express	-----	185 "
Average for all varieties			349 Lbs.
Difference between highest and lowest			240 "