

## **Historic, Archive Document**

Do not assume content reflects current scientific knowledge, policies, or practices.



LIBRARY  
RECEIVED  
★ APR 7 1928 ★  
U. S. Department of Agriculture

*Our  
Catalog*

62.43

1915



1928

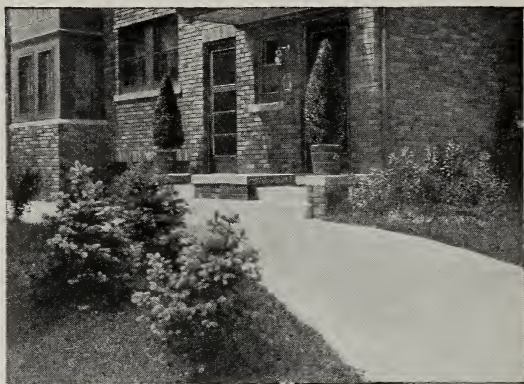
Stock of the Better Kind  
High Grade But Not High Priced

**Swedberg Nursery Co.**

Battle Lake, Minnesota

*“Service, Quality, Fair Prices, Since 1915”*

D. N. Shoemaker



## INTRODUCTORY

We wish to thank you for making the past season the best year we have had. We deeply appreciate your loyalty and kind patronage, and hope to serve you even better this season.

As you turn the pages of this catalog you may feel assured that every statement made here is backed by a reputable firm of long experience with northern grown nursery stock. Our stock is exactly as represented; our goods are first-class in every respect. We never send out seconds or mail grades.

Northern trees and shrubs are *hardy*. Stock that can stand the winters in the Otter Tail County can stand the severest weather in the United States.

You will find our prices fair. You may find *lower prices*, but it will be hard to find *better stock*.

Our membership in the American Association of nurserymen insures your protection.

---

---

Send your order in as soon as you receive this catalog—the sooner the better. Prices are net F. O. B. Battle Lake, Minnesota. Packing Free. Dahlias, Gladiolus.

Seeds sent postpaid on receipt of price.

---

---

### TERMS OF BUSINESS AND OUR GUARANTEE

Cash with order unless otherwise agreed. Remit by P. O. or Express Money Orders, Bank Draft or your personal check. Send in your order early and remit when you want goods shipped, if you wish. We give 3 of one kind and size at dozen rates; fifty at one hundred rates; three hundred at thousand rates. We ship by express or freight; smaller shipments by mail. Always allow for postage if you want parcel post shipment. State when you want shipment sent. While we exert the greatest care to have everything true to name we will not assume any responsibility for errors that may occur other than to replace any stock which may prove untrue. We replace all stock that fails to grow at one-half list price if reported to us within 90 days after goods are received. This means that it will reach you in a healthy, growing condition, and is a fair deal. All goods are shipped F. O. B. Battle Lake, Minnesota, unless otherwise arranged.

# Apples

"E" "C" designates—E. for "Eating"—C. for "Cooking" or E. and C. good for both eating and cooking. This information is given for our customers as in general they want to know what the variety is good for. Note the "E" or "C."

## SUMMER APPLES

- DUCHESS OF OLDENBERG, E**—Good size, yellow, streaked red, juicy, rich, sub-acid, productive. Valuable for market.
- YELLOW TRANSPARENT, E**—Earliest and best; tender, juicy, sprightly, sub-acid.

## AUTUMN APPLES

- PATTEN'S GREENING, C**—Large, round, yellowish green with bronze, blush, sub-acid. Very hardy.
- WEALTHY, E and C**—Originated in Minnesota. Hardy. Vigorous and very productive.
- WOLF RIVER, C**—Large, handsome; yellow, striped red, juicy, pleasant, spicy flavor, very hardy.
- FOLWELL, E**—One of Minnesota State Fruit Breeding Farm apples. Good quality, same season as Wealthy.
- HIBERNAL, C**—Sour, good for cooking. Tree very hardy.
- OKABENA, E**—Similar to Duchess, but later and preferred by many to that variety.

## WINTER APPLES

- ANISIM, E and C**—Season early winter. Color crimson; valuable in the Northwest.
- HARALSON, E and C**—One of Minnesota State Fruit Breeding Farm apples. Keeps until Spring in a common cellar. Quality very good. Hangs to tree until late.
- McINTOSH, E**—Medium size, dark red, good quality, juicy, sub-acid.
- MALINDA, C**—Season late winter; color yellow with red blush. Best winter apple for the North.
- NORTHWESTERN GREENING, C**—Hardy, yellow, rich, of good size; extra long keeper.
- RED WING, E and C**—Very hardy, large, red, splashed.



Haralson—Red, hardy and Very Good Keeper

## Crab Apples

- Perfectly hardy, succeed everywhere; early and annual bearers.
- HYSLOP**—Large, deep crimson: one of the most beautiful; very popular.
- FLORENCE**—One of the best to plant. Very hardy; an early bearer. Fruit large, red and of good quality. Origin, Minnesota. Tree very hardy.
- SWEET RUSSET**—Large, roundish oblong, greenish yellow, mild, sweet.
- TRANSCENDENT**—Immensely productive, bright red; one of the most popular.
- WHITNEY**—One of the largest, glossy green, splash carmine; firm, juicy, pleasant, great bearer. Fine to eat out of hand.
- DOLGO CRAB**—Brilliant red, oblate apples. Suitable for all uses. Tree very attractive with dense dark green foliage.



# Plums

## PROF. HANSEN'S HYBRID PLUMS

The Plums Without a Plum Pocket

**SAPA**—Blue-black. Solid cherry plum. Very heavy bearer.

**OPATA**—Red; green meat. Large, fine flavor.

**HANSKA**—Red, flavor of apricot. fine for canning and preserving.

**WANETA**—The mammoth red plum. Size of a small crab.

## OTHER PLUMS AND CHERRIES

**COMPASS CHERRY**. Red—The hardy plum cherry. Good.

**DeSOTO**—Medium to large; color yellow turning to red when fully ripe; flesh firm and good. Medium to late.

**LORING PRIDE**—Seedling of the Burbank. crossed with Surprise. Most remarkable plum introduced in a decade.

**SURPRISE**—Fruit large, dark purplish red; flesh firm, tender and of fine quality.

**TERRY**—Our best Native Plum. Abundant bearer, delicious to eat out of hand. Latest to ripen.

## NEW MINNESOTA HYBRID PLUMS

State Breeding Farm Fruit.



Underwood Plum

**UNDERWOOD**—A cross between Shiro and Wyant, is one of the outstanding members of the new group of hybrid plums. Red over yellow. Large, early, semi-cling, juicy, sweet. Early.

**TONKA**—A cross between Burbank and Wolf, considered one of the best of Minnesota hybrids, light red. Large, midseason, free-stone, a good canner. Early.

**RED WING**—A Burbank and Wolf Cross, it's marked for distinction because of its unusually large fine appearing, light red fruits which are so well adapted to dessert and culinary purposes. The skins and pits are so easily removed that the fruits can readily be sliced and served with sugar and cream, like peaches. Midseason.

**MONITOR**—A Burbank and native cross, bronze red. Large, late. A delicious fruit and heavy cropper. Late midseason.

**RADISSON**—A cross between unknown varieties of Prunus Salicina and probably Prunus Americana. It produces a large showy red plum of most delicious flavor, ripening about August 1st. Early.

**HENNEPIN**—A Satsuma and Americana cross. A dark reddish purple plum covered with dense bloom, giving it a distinctive and attractive appearance, valuable for canning and preserving on account of its rich purplish red flesh. Early.

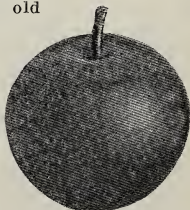
**GOLDEN ROD**—A Shiro and Howard Yellow cross, a clear yellow plum, a promising marketing variety because of its firm flesh, large size, attractive color. Late.

We grow other varieties as Anoka, Elliot, LaCrescent, Mendota, Mound, Winona, etc., if interested in these they are same price as the other Hybrid Plums.

This is what one customer told us last summer; "I thought that this country could not grow the delicious plums as we had in the old Country (Sweden), but now I am convinced that these are far better in quality and flavor." (This was after sampling several of these new Hybrid Plums).

**ZUMBRA CHERRY**—A sandcherry and pincherry and black sweet cherry cross. Purplish-black fruit. Ripe in Aug. Crisp flesh pleasantly flavored, fine canner. Stone very small.

**ST. ANTHONY CHERRY**—A sandcherry and Satsuma plum cross. Resembles the Sapa, but more attractively colored. Fine flavor. Dull purplish-red. Flesh dark red, juicy. Late August.



Zumbra

## Pears

### HARDY MINNESOTA PEARS NO. 1

A new variety of promise and merit, of good quality for cooking and eating. Hardy for Central Minnesota and southern sections. May do well farther north in favorable locations.



Minnesota No. 1

## Grapes



Alpha Grape

**BETA**—The "Standard" Hardy Grape. The most widely grown and probably the most profitable grape in the Northwest. A heavy, annual bearer, hardy as the wild grape and producing enormous crops of medium sized blue-black fruit of good quality. It ripens so early that it may be grown in the far north.

**ALPHA**—A more recent production than Beta and preferred to it by many of those who have grown it. Originated near St. Cloud, Minn. Equal to Beta in hardiness and yield. The introducers of Alpha claim for it a much higher quality than that of Beta. It is worthy of extensive cultivation.

**CONCORD**—Of the Tender Grapes we are growing only the Concord, the most generally satisfactory of the tender grapes. A vigorous grower and a heavy producer of good quality fruit which is far superior to the hardy grapes in size and flavor. Concord is a standard grape everywhere. We offer only strong two-year vines.

Send for Instruction Book, "How to Plant, Grow, Prune and Care for Grapes"—it's FREE.

## Currants

**PERFECTION**—Bright red of a large size. Productive, mild sub-acid flavor. Plenty of pulp and few seeds.

**RED CROSS**—A strong growing variety. Cluster long; berry medium to large; bright red; quality good.

**FAY'S PROLIFIC**—Large red berry; fine flavor, very prolific valuable for both home and market.

**WHITE GRAPE**—Berries large to very large, yellowish-white color. Sweet, excellent for table. Finest of the white sorts.

**BLACK**—The leading well tested black currant. Productive. Excellent quality, strong grower.

## Gooseberries

**HOUGHTON**—A reliable old variety, enormously productive, of vigorous growth. Good quality.

**DOWNING**—Large, handsome pale green, berry of splendid quality. Bush vigorous, strong and upright.

**RED JACKET**—A wonderful cropper. Large, smooth berries. Prolific and hardy.

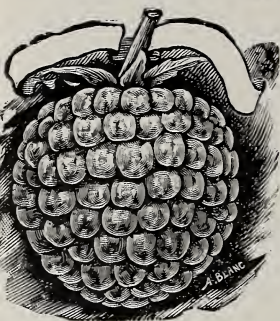
**PEARL**—A healthful, productive variety. Pale green berries, valuable for home and canning.

**CARRIE**—Vigorous, productive. One of the best old sorts. Large, red berries.

**COMO**—Fruit roundish, ripens green; quality good; holds on bushes a long time without scalding. Minnesota Station fruit.

# Raspberries

Write for Special Prices quoted on 500 or 1000 lots.  
Mosaic Free



Latham, Natural Size

## LATHAM RASPBERRY

Minnesota No. 4

Minnesota Station Fruit

The leading Red Raspberry in size, color, quality, hardiness and productiveness. The superior kind.

**CUMBERLAND**—The best black-cap raspberry.

**KING**—Early, red; large berries, very hardy, good quality.

**ST. REGIS**—Red; the so-called Everbearing.

**SUNBEAM**—Very hardy, red; early variety. Good flavor.

Strong, transplanted Raspberry plants double above prices.

**LUCRETIA DEWBERRY**—Hardy trailing black berries.

**ELDORADO** and **OLDER BLACKBERRY**—The two best varieties, should have winter protection.

# Rhubarb

This deserves to be ranked among the best early fruits in the garden. It affords the earliest material for pies and tarts, continues long in use, is valuable for canning. Use well grown roots, not divided old clumps.

# Asparagus

**WASHINGTON**—This Giant Asparagus is the result of fourteen years of plant breeding by the United States Department of Agriculture in an effort to develop a rust-resistant asparagus, surpassing all other varieties in yield and quality. It is one of the most palatable and tender varieties known, producing enormous shoots of a brilliant dark green color which retain their tenderness and do not branch until well above cutting height. It has proved itself to be a tremendous producer and best of all it is entirely free from rust.

## CHIVES OR GRASS ONION

The leaves are slender and appear very early in the spring, and may be shorn several times during the season. The chives are equal to the Onion for flavoring soups and salads.



Washington Asparagus

# Horseradish Roots

Set roots vertical, small end down. Cultivate thoroughly until tops cover ground. Grown extensively by home gardeners as well as market gardeners.

Minneapolis, Minnesota, January 8, 1928.

Two years ago I purchased some Gladioli bulbs from you that proved to be very good in quality and entirely satisfactory in every way, including price. I am now interested in the bulbs listed on the attached sheet. If you have any of them for sale will you please price each and return to me. Yours truly.—C.A.B.

On January 18th we received his order for more bulbs. We try to please others. We'll try to please you.

February 3, 1927.

Dear friends: Please find enclosed a check for \$———, what I think is due you for Gladiolus bulbs last spring. The bulbs did fine.

MRS. E. R., Battle Lake, Minn.



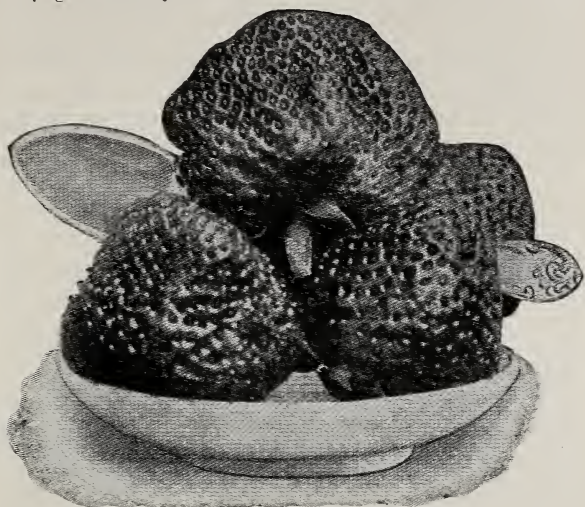
# Strawberries

## Everbearing Varieties

**CHAMPION**—Quality of the best: large size: productive and hardy. One of the leading everbearing varieties.

**PROGRESSIVE**—For many years the standard in this class.

**DULUTH**—Minnesota Fruit Breeding Farm origination. Dark red, very good variety.



**Mastodon Everbearing (the world's best)**

**MASTODON**—World's best. Wherever this variety has been exhibited it has taken first prize, because of its size, color and flavor. Visitors to our field last fall pronounced it a wonderful fruit and healthy strawberry plant. Be sure to get a start of this variety this season.

## Spring Bearing Varieties

**SENATOR DUNLAP (S)**—This berry is of the Warfield type, has a perfect blossom, is hardy, productive, a splendid keeper and able to hold its own under any "rough and tumble" methods of culture to which it is likely to be subjected. It is a very heavy bearer of good size, even fruit, of a very beautiful dark red color. It is a berry to grow for either home use or market.

**PREMIER (S)**—Large, firm berry and early variety, red all thru.

**MINNESOTA FRUIT BREEDING FARM VARIETIES.**

**CHASKA**—Large, midseason.

**MINNEHAHA**—Fruit very large. Late.

**NOKOMIS**—Large, Midseason.

**EASY PICKER**—Fruit medium to large. Midseason. All varieties: has perfect (S) blossom.



**Senator Dunlap Strawberry**

April 19, 1927.

New Effington, South Dakota.

Have received my Gladiolus and Dahlias. They are sure fine.—Mrs. Wm. G.

September 2, 1926.

I was much pleased when the big box of Gladiolus (cut flowers) came today. They are wonderful. . . . I expect to have some like them in our garden before long.—Miss Anna E. H. Sebeka, Minnesota.

# Shade and Ornamental Trees

**ELM**—(*Ulmus americana*). Tall, graceful wide - spreading tree. Native of the North. Very suitable for street planting.

**ASH**—(*Fraxinus americana*). Under proper cultivation it grows rapidly. It will last permanently. It is a beautiful shade tree. Hardy as the old oak tree.

**BIRCH** (*Betula papyrifera*).—A beautiful tree, well known. A native of this country. Bark smooth, silvery-white. Requires plenty of moisture.

**BOX ELDER**—A native tree of exceedingly rapid growth. Exceptionally hardy.

**BUTTERNUT** (*Cinerea*)—Lofty and spreading; valued for tropical appearance, beautiful wood, and nuts.

**SILVER MAPLE or SOFT**—Grows rapidly; attains large size; head attractively rounded. Foliage bright green with silver beneath.

**SUGAR MAPLE** (*Saccharum*)—Straight grower, vigorous, stately; inclined to form wide spread when given room. Dark green foliage. Also known as Hard Maple.

**SCHWEDLER'S MAPLE** (Purple Norway)—Leaves attract particular attention in spring with their gleaming red and purple tones.

**MOUNTAIN ASH**—Grows 18 to 20 feet, producing bright red berries; excellent for planting among shrubbery.

**SILVER POPLAR** (*Alba*)—Rapid grower. Leaves glossy white underneath. Root inclined to sprout where unattended.

**NORWAY POPLAR**—A hybrid of the Dakota Cottonwood and possibly of the Balm of Gilead. Called the Sudden Saw Log.

**BIRCH** (Cut Leaf Weeping)—Bark silvery white; leaves delicately cut. Perfectly hardy.

**WEeping WILLOW** (*Babylonica*)—Tall growing, with long, drooping branches and narrow, dark-green leaves. An interesting tree, with graceful habit.

**WEeping MOUNTAIN ASH** (*Aucuparia pendula*) — Branches droop and straggle, making a pleasing effect. Bears red berries which hang all winter.

**BLACK WALNUT** (*Nigra*)—Tall and majestic; trunk straight and bare; produces rich, meaty nuts.

**HORSE CHESTNUT** — White flowering, with darker leaves and splendid flower spikes a little later in the season. Perfectly hardy and popular but rare sort.

**RUSSIAN OLIVE** (*Eleagnus angustifolia*). Its light green and silver leaves make it valuable in color contrasts. A tall grower, making a heavy trunk when pruned. Very hardy.

**SIBERIAN CRAB** (*Pyrus baccata*).—Small spreading tree with clusters of pink-white drooping flowers. The fruit is yellow or red. Very hardy.

**LAUREL LEAF WILLOW** (*Salix pentandra*)—Upright and spreading in growth. Laurel-like leaves of deep green. Excellent as a screen hedge.

**GOLDEN WILLOW** (*Salix vitellina aurea*). Erect and handsome, with rich golden bark. We recommend this variety for wind-break planting, also the Golden Willow and Norway Poplar.

**CEDAR or AMERICAN ARBORVITAE**—Hardy and dependable. It usually grows bushy at the bottom and tapering toward the top. A moist location is preferred. Foliage very soft and of a deep green color.

**SCOTCH PINE** (*Pinus sylvestris*)—Spreading in growth, foliage blue green, rigid and twisted; excellent for shelter planting. Prefers a cool gravelly soil but will grow on almost any soils. Rapid grower.

**BLACK HILL SPRUCE** (*Picea canadensis albertiana*) — Symmetrical, compact and bushy of habit. This is the true Black Hill Spruce and is by no means to be confused by the so-called Black Hill Spruce sold by some nurseries as *Picea nigra*, which is really only the common Black Spruce and not the Black Hill Spruce at all.

**NORWAY SPRUCE** (*Picea excelsa*).—Appreciated for its rapid growth, thriftiness and heavy masses of deep green foliage. Much quicker growing than White Spruce.

**COLORADO BLUE SPRUCE** (*Picea pungens*) —The glory of the Colorado Blue Spruce is its foliage, which is an intense blue. It is known as the handsomest tree on the Rocky Mountain Trail.

**DWARF MUGHU PINE** (*Montana Mughus*)—Broader than its height. Forms a dark, dome shaped bush 5 to 6 feet high. Used on rocky banks, terrace slopes, and corners of entrances.

If interested in large sizes from 4 to 9 feet. Please write for special low prices.



Colorado Blue Spruce

December 5, 1927.

Hebron, North Dakota.

I had very good success with the stock from you, in fact 100 per cent grew.—Mr. A. P. N.

# Ornamental Flowering Shrubs

Real Specimens; Good Strong Plants

**COTONEASTER** (*Acutifolia*)—A dense growing shrub with small glossy dark-green leaves. Hardy; stands partial shade. 6 to 8 feet.

**DOGWOOD** (Red Twigged—*Alba sibirica*)—Free growing. Bark is a showy red in early spring. Dainty white flowers come early in summer, followed by whitish blue berries. 6 to 10 ft.

**ELDER**, Cut Leaf, (*Nigra laciniata*)—Half drooping; leaves are fern like. Especially effective in masses.



Golden Elder

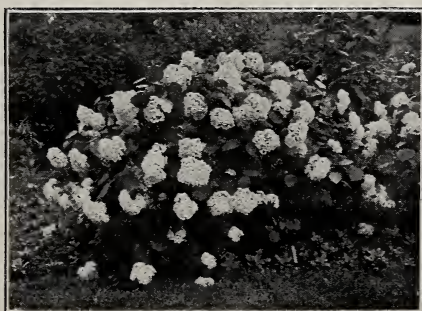
**ELDER**, Golden (*Nigra aurea*)—Golden leaves. Flowers white, in flat topped cymes in early summer. Prunes well. 6 to 8 ft.

**CRANBERRY**, High Bush (*Opulus*)—Very hardy. White flowers of early summer are followed by brilliant red edible berries resembling cranberries.

**HAWTHORN**—Bears thickly clustered white flowers in May. Produces edible red berries in September. Prunes well.

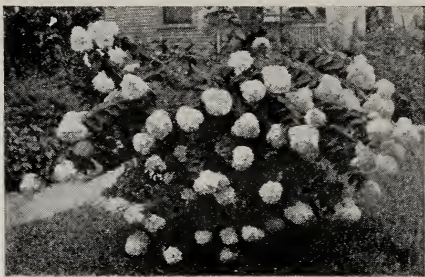
**HONEYSUCKLE**, UPRIGHT (White or Pink)—White or pink flowers which contrast beautifully with the foliage. Blossoms in June.

**HYDRANGEA ARBORESCENS STERILIS**, (also Hills of Snow, Summer Hydrangea, or Snowball Hydrangea.) The blooms are of the very largest size, of pure snow-white color, and the foliage is finely finished. One of its most valuable characteristics is its coming into bloom just after the passing of all the early spring shrubs.



Hydrangea Arborescens

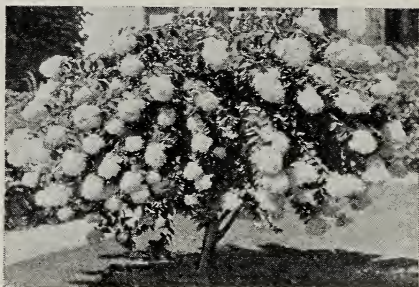




Hydrangea P. G.

**HYDRANGEA, PANICULATA GRANDIFLORA**—These plants are absolutely hardy, grow in any soil and bloom the same year they are set out. They flower abundantly, bearing hundreds of immense panicles of bloom. White turning to rose in autumn. An annual shortening of branches tends to increase the size of the flowers. Very fine and valuable for cemetery planting.

**HYDRANGEA, Tree**—The lovely Hydrangea Paniculata in tree form. These fine trees are two to four feet high, with strong, erect stems and splendid crowns, bearing great trusses of flowers. They are very effective for lawn; or if planted along the walk or driveway, they are wonderful when in bloom. By planting several of these beautiful trees you can prove to your friends that these Tree Hydrangeas are exceptionally nice and not commonly seen. Perfectly hardy here.



Hydrangea Tree

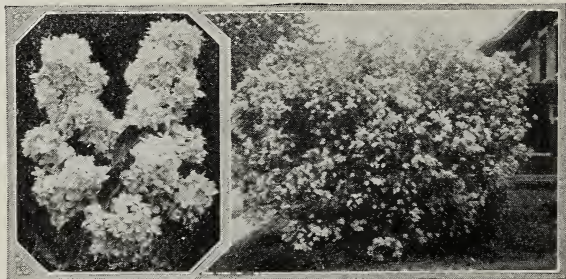
**LILAC (Hungarian—Josika)**—Blue flowers in June after other lilacs have ceased blooming. Does not sucker from roots.

**LILAC (Pres. Grevy)**—Double. Clusters large, full, pale wisteria violet. (See cut below.)

**LILAC (Common Purple)**—Bluish purple flowers, well known.

**LILAC (Common White)**—Cream white flowers.

**LILAC (Persian Purple)**—Of more slender growth and finer foliage than the common lilac. Flowers purple in large, loose panicles. Does not sucker from roots.



Lilac, Pres. Grevy—Double Flowers, Beautiful

February 25, 1926.

Last year I ordered 25 Gladiolus bulbs and they were fine. This year I want 50 more, also the 5 Dahlias.—Mrs. H. H. H., Tracy, Minn., Route No. 2.





**MOCK ORANGE** (*Philadelphus*)—Bears fragrant, creamy white flowers in great profusion. Will grow high enough to make screens. We grow these in several varieties.

**ALMOND, Pink** (*Rosea*)—Bears very double rose colored flowers on short stems. A general favorite. 4 to 5 feet.

**SNOWBALL** (*Common*)—A popular shrub. Makes a large bush. Bears balls of pure white flowers in June.

**SNOWBERRY**, red and white—White or rose flowers are produced in great abundance during summer. White berries which follow are borne on the bush until autumn.

**SUMAC, Cut Leaved** (*Typhina*)—Fern like foliage is brilliantly colored in autumn. 8 to 10 feet.

**SUMAC, Staghorn**—A picturesque form, with handsome leaves, and deeply cut leaflets.

**SYRINGA** (*Mock Orange*)—Beautiful, tall, vigorous, hardy, with profuse, white, orange-like flowers in May. Very popular.

**TRILOBE, Flowering Plum**—Flowers in May are double, of delicate pink, nearly an inch in diameter, thickly set on branches.

**VIBURNUM, Lantana or Wayfaring**—A shrub growing 8 to 10 feet tall. Heart shaped leaves and showy flower clusters, followed by red berries, which later turn to black.



Spirea Anthony Waterer

## Spirea

### TEN HARDY VARIETIES

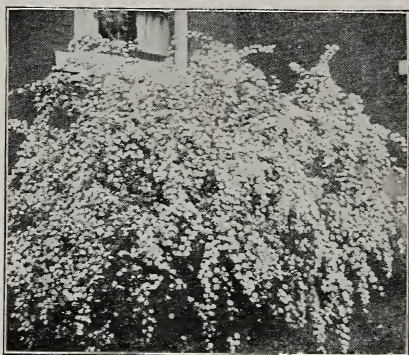
**SPIREA, ANTHONY WATERER**—A small dwarf variety 1½ ft. covered with flat heads of pink flowers. Used for edging and in front of shrubbery.

**SPIREA Arguta**—Bears pure white flowers early in spring. Narrow, bright green leaves assume yellow and orange tints near end of season.

April 19, 1927.

Hallock, Minnesota.

Received the Gladiolus and Dahlia bulbs in fine condition.—  
Mrs. A. N.



**Spirea Van Houttei**

**SPIREA Billardi**—Narrow, dense spikes of bright pink flowers. A strong grower. Good for cut flowers.

**SPIREA Callosa Alba**—Dwarf. Pure white; blooms all summer.

**SPIREA Golden or Aurea**—One of the best of our yellow leaved shrubs. Holds its color all summer.

**SPIREA Prunifolia**—As the leaves are opening, tiny snow white double flowers wrap themselves along the branches in a lavish display of bloom.

**SPIREA Ninebark or Opulifolia**—Grows rapidly upright to ten feet, although branches droop when flower laden.

**SPIREA (Thunbergii)**—The earliest of the Spireas to bloom. Of a rounded, graceful form. Branches slender and somewhat drooping. Foliage narrow and yellowish green, changing to delicate purple in fall. Flowers pure white.

**SPIREA Sorbifolia or Ash Leaved**—Long showy panicles of white flowers. Grows six to seven feet.

**SPIREA, VAN HOUTTEI**—Graceful, with long, drooping sprays, thickly studded with handsome, pure white flowers; hence its popular name, "Bridal Wreath." The finest Spirea of them all.

## Desirable Plants for Hedges

**BARBERRY (B. Thunbergii)**—Low spreading bush, with small branches covered with small sharp thorns and in spring with small yellow flowers, succeeded by bright scarlet berries.

**COTONEASTER**—Dense growing shrubs, makes a fine hedge. See description under shrubs.

**BUCKTHORN**—Very hardy and desirable for hedge purposes. Endures shearing well.



Hedge of Russian Olive, Buckthorn or Caragana can be used

Wilmar, Minnesota.

"Just received my strawberries and Raspberries; they came in good condition and expect them all to grow."—C. C.



Barberry (Front)—Mock Orange (Rear)

**CARAGANA (Pea Tree)**—Fine locust-like foliage and yellow flowers. Very hardy and desirable.

**RUSSIAN OLIVE**—Fine for screen or hedge. Fragrant, yellow blossoms. Leaves green above and silver white below.



Spirea Van Houttei, Spirea Anthony Waterer, Spirea Thunbergii, Virginia Creeper and Cotoneaster, used for this foundation planting.

**CORNUS, Red Dogwood**—White flowers followed by white berries, very effective hedge.

**VAN HOUTTEI SPIREA**—Beautiful shrub; makes a good hedge. See description under shrubs.



Bridal Wreath, Arbor Vitae and Barberry Plantings

April 14, 1927.  
Chicago, Illinois.

I enclose check for \$35.00 to cover——. This order you will please ship via express to——. I express my hope that the trees now ordered will prove just as good as those I last received from you, and, if so, I shall have the pleasure to send a return order later.—Mr. And. L. L.

Note. Yes. On April 27th we received another order for 50 Spirea Van Houttei, 2-3 feet, so no doubt Mr. And. L. L. was satisfied with first shipment.

February 7, 1927.

I was much pleased with my plants which I bought from you the spring of 1923. Please let me know your best price on mixed Delphiniums.—Mrs. Ethel B., Minn., (Home address——Minn.)



# Hardy Perennial Plants

## FIELD GROWN

- ACHILLEA**—(The Pearl). White flower, blooms all summer.  
**AQUILEGIA**—(Columbine). Many colors.  
**ASTERS**—Annuals, (not hardy), all colors mixed. 40c per dozen.  
**ASTERS**—Mixed, many colors, hardy, late bloomer.  
**BLEEDING HEART**—Heart-shape, red flowers.  
**BOLTONIA**—White flowers, late fall, grows 4 foot.  
**CAMPANULA**—Bell shaped flowers blue and light colors.  
**CANNA**—Roots, broad leaves, red and yellow flowers. (Store in cellar over winter.)  
**CANTERBURY BELLS**—Blue and white.  
**CARNATIONS, HARDY**—Red, white, pink and yellow.  
**CHRYSANTHEMUM**—In red, pink, white and yellow.  
**CHINESE LANTERN PLANT**—A beautiful bouquet plant when dried for winter use.  
**COREOPSIS**—Yellow, daisy like flowers.



Delphiniums Gold Medal Hybrids

- DELPHINIUMS**—Tall spikes of blue flowers. Gold medal flowers.  
**DELPHINIUMS**—Chinese dwarf, blue and white.  
**DIGITALIS**—(Fox-Glove) Mixed colors.  
**FERNS**—Hardy, assorted.



Gaillardia

- GAILLARDIA** — Many shades and colors. A free bloomer.  
**GOLDEN GLOW**—Beautiful double yellow flowers.  
**GYPSOPHILA PANICULATA** — (Baby's Breath) fine for filler amongst cut flowers. Can be dried and used for winter.  
**HEMEROCALLIS**—Hardy lily orange flower.  
**HIBISCUS**—Half hardy, immense flowers with crimson eye.  
**HOLLYHOCKS**—Double, single, in many colors.



**IRIS** — In many leading varieties; state color wanted.

We grow only named varieties. If interested in Iris, write for list.

**LILY AURATUM**—(Gold banded).

**LILY ELEGANS**—Dark red flower, grows 1½ feet, beautiful.

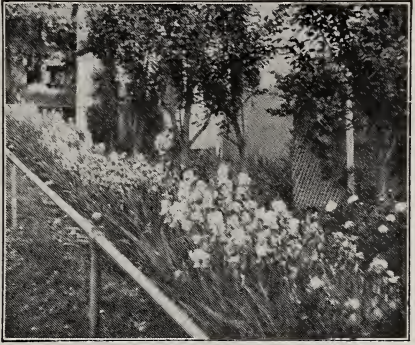
**LILY OF THE VALLEY**—Creamy white early, strong clumps.

**LILY REGALE**—Very fragrant, white flowers. Hardy Chinese variety for the north.

**LILY, TIGER**—Red flowers, black spotted, 4 ft., late.

**LUPINE**—Blue or white flower spikes.

**PANSY PLANTS**—Mixed colors, 50c per dozen. Giant Bloomers.



Iris Hedge



Phlox



Lily of the Valley

**PENTSTEMON GRANDIFLORA**—

Lavender, bell shaped flower, a hardy native Foxglove.

**PHLOX**—Hardy, many colors, best leading varieties.

**PLATYCODON**—(Balloon flower). Blue and white.

**POPPY ORIENTAL**—Scarlet flowers, very showy.

**PYRETHRUM, HYBRID**—Daisy-like flowers, many colors.

**YARROW**—Rosy pink flowers, July to October, in dense heads

---

From Chicago, Illinois another customer with repeat order amounting to over \$80.00 for shade trees and shrubs and other stock.



Festiva Maxima Peonies

# Peonies

The Best of all Perennial Plants  
Strong Divisions—3 to 5 eyes.

## EARLY FLOWERING VARIETIES

- CAROLINE MATHER—Purplish Red. \$1.25 each.
- DUCHESS DE NEMOURS—White shading yellow.
- FESTIVA MAXIMA—Large white.
- MONSIEUR JULES ELIE—Pale rose, very fine, \$1.25 each.
- OFFICINALIS RUBRA—Crimson, very good.

## MID-SEASON FLOWERING VARIETIES

- FELIX CROUSSE—Very brilliant red, late mid-season.
- LA ROSIERE—Creamy white.
- LOUIS VAN HOUTTEI—Dark crimson.
- MARY BRAND—Bright crimson, very fine. \$2.50 each.
- RUBRA TRIUMPHANS—Dark crimson, early mid-season.
- SOLFATARE—Sulphur white.

## LATE FLOWERING VARIETIES

- DELACHEI—Deep purplish crimson.
- FESTIVA ALBA—Ivory white.
- KAEL ROSENFELD—Dark red, \$2.00 each.
- LOUISE RENAULT—Large pink. \$1.25 each.
- MARIE LEMOINE—Beautiful silver white.
- RUBRA SUPERBA—Dark crimson, very late.

## UNNAMED PEONIES BY COLOR

Pink, Red, White, strong 2-year old plants and large clumps.



Peony Planting

June 2, 1926.

I have often thought I should have written you and say I was very well satisfied with the Nursery Stock I got from you this spring. I have sent to many nurseries for trees and shrubs, but never got any better. Thank you. Very respectfully, Mr. J. S. S. Hendrum, Minn.

Feb. 7, 1927—Kindly send me the following when it is time to plant:—, the Gladiolus and Dahlias and Spireas I ordered from you did very well in spite of the severe drought last summer.—Esther S., Evansville, Minnesota.



## Dahlias

**DAHLIAS**—We list here a few of the very best sorts, strong free bloomers and showy. These make nice plants for garden, flower bed or hedges. We offer in colors, red, pink, white and yellow, mixed at 15c each; \$1.50 per dozen.

- DELICATE**, pure white, wide petals, orange center, strong. Single flower ..... Each 25c
- MRS. CREEVY**—A golden buff; a beauty; unequaled for decorative effects as cut flowers; single flower..... Each 40c
- CANARY**—Clear yellow color; very fine flower; long petals. Peony Flowering; long wide petals..... Each 40c
- CACTUS FLOWERING KINDS**—Double.
- MINNIE BAXTER**—Deep maroon color, good as a cut flower, beautiful; one of the best..... Each 50c
- MRS. W. E. ESTES**—Snow white, large flower; new hybrid; very showy ..... Each \$1.00
- ETHEL**—Maroon; velvety crimson, very showy variety..... Each 50c
- AMERICAN BEAUTY**—Rich, ruby red (hybrid show)..... Each 25c
- BALL OF GOLD**—Yellow, little smaller flowers than the Yellow Duke ..... Each 20c
- COM. RIVOIRE**—Reddish chamoise, covered with a lovely bloom; one of the best of its class (Peony Flowering) ..... Each 50c
- DR. TEVIS**—A novelty; beautiful shade of soft salmon rose, suffused with old gold; immense flowers..... Each \$1.00
- DREER'S WHITE**—An excellent white Dahlia, strong bushy plants, makes fine hedges; color glistening white. Hybrid show variety; blooms immense size, often measure over 6 inches across..... Each 50c
- MRS. MILLER**—A beautiful purple flower on long stems; do not miss this one ..... Each 25c
- SOUV de GUSTAV**—Orange red of very large size bloom ..... Each 30c
- SYLVIA**—Soft mauve pink changing to white at center; good variety ..... Each 25c
- YELLOW DUKE**—Clear yellow, large flowers and free bloomer. Show ..... Each 30c
- For dozen rate multiply by 10.
- POMPON or Bouquet Dahlia**—A very small dahlia flower, low growing; nice for borders. Isabella, orange scarlet at ..... Each 25c
- The following sell at 50c each, except where noted.
- F. W. FELLOW**—Bronze Cactus..... Each \$1.00
- MILLIONAIRE**—Largest Pink. Decorative ..... Each 75c
- MRS. J. H. DICK**—Yellow and Bronze. Decorative..... Each 75c
- BREAK O'DAY**—Cream. Decorative..... Each 75c
- PATRICK O'MARA**—Bronze orange. Decorative ..... Each 75c
- PRIDE OF CALIFORNIA**—Large scarlet. Decorative.
- GLADYS SHERWOOD**—Fine white. Decorative..... Each 75c
- MINA BURGLE**—Deep red. Decorative.
- MRS. EDNA SPENCER**—Lavender Cactus ..... Each 75c
- U. S. AMERICA**—Old Gold. Decorative..... Each \$1.00
- SUNSET GLOW**—Red and Gold Cactus, \$1.00.
- ATTRACTION**—Large, pink cactus.
- MRS. C. H. BRICK**—Variegated.



# Gladioli

**GLADIOLI SURE TO BLOOM—ALL BATTLE LAKE GROWN  
"FULL OF PEP"**

25 bulbs of one variety at 100 rates. 6 bulbs at 1 dozen rate.

If you love flowers, buy Gladioli and Dahlias. Plant them in the garden, front yard, back yard by the hundreds—you will enjoy them. Say it with flowers to your friends—we ship cut flowers in season—two size boxes, \$1.00 and \$2.00, prepaid inside third zone. Satisfaction will be yours.



**Anna Eberius**

**AMERICA**—A soft lavender pink with wax-like flowers on strong spike; each 6c; dozen 60c; 100 for \$4.00.

**ANNA EBERIUS (Diener)**—Deep Rhodamine purple shading into very deep Bordeaux center. Each 15c; \$1.50 per dozen.

**AUGUSTA**—Pale white, a good strong grower, each 8c; dozen 80c; 100 \$4.50; Second size \$3.25 per 100.

**BLACKHAWK**—Large cardinal red; each 10c; dozen \$1.00; 100 \$8.

**BARON JOS. HULOT**—Deep violet blue, medium size, each 10c; dozen \$1.00; 100 \$8.00.

**CHICAGO WHITE**—White with lavender marking, 6c each; 60c dozen; \$4.00 per 100.

**EUROPA**—Pure white, very large flowers, 20c each; \$2.00 per doz.

**EVELYN KIRTLAND**—Rose pink. Large.

**FRANCIS KING**—Large, light scarlet; each 6c; dozen 60c; 100, \$4.50.

**GIANT NYMPH (Coleman)**—A giant in growth and flowers. Light rose pink with creamy yellow throat. Don't miss this one. Each, 25c; Bulblets 10c per dozen.

July 23, 1926.

Dear Sirs: Enclosed find———, which I owe you for postage on strawberry plants this spring, they are A-No. 1 plants and wish to thank you for sending such good plants.—Mr. F. F. Walker, Minn. (1000 CHAMPION plants ordered.)

May 8, 1926.

I am thankful for the shipment. I recommend you to my neighbors.—Mrs. J. F. W., Three River Falls, Minn.



**GENERAL JOFFRE** — Maroon red. 15c each; \$1.50 per dozen.

**GOLDEN KING**—Golden yellow, with crimson blotch, very strong spike; each 10c; dozen, \$1.00.

**GOLDEN MEASURE** — F i n e golden yellow. Pure with no markings. Best yellow to date. Each, 20c; \$2.00 per dozen.

**HALLEY**—Bright salmon. large early variety, very good, each 5c; dozen, 75c.

**HERADA**—Blooms immense size on strong stalks. pure mauve, \$1.50 per dozen; 15c each.

**HENRY FORD (Diener)**—Very dark Rhodamine purple shading into deeper tones near center. Color very clear like Anna Eberius, but much larger and clearer. Very prolific. Each 35c; half size 20c; Bulblets 10c for 5; 250 for \$1.00.

**LILY WHITE**—Pure white, early florist variety; 15c each; dozen \$1.50.



Europa and Rose Ash

**LOUISE**—Very large open flower measuring from five to six inches in diameter. Color, fine bright blue lavender with wine-colored blotch. Very good. One for 20c; \$2.00 per dozen. Try some and be delighted.

**LeMARECHAL FOCH** — Beautiful shade of light pink flower, much larger than America. Each, 15c; \$1.50 per dozen.



Lily White

**MRS. DR. NORTON**—Soft pink with lighter throat of yellowish tint. Flowers well open. Each, 15c; \$1.50 per dozen.

**MAGIC K**—Lavender Blue, rich purple. throat blotch, 10c; \$1.00 per dozen.

**ONE EACH**—32 varieties listed in this catalog. Value \$4.65, for only \$4.00, and 28 extra bulbs free with each order, or 60 high class bulbs for \$4.00.



EVELYN KIRTLAND



Mrs. Frank Pendleton

**MRS. FRANK PENDLETON** — (Kundred)  
Large open flowers of bright rose pink, with large carmine blotch. If you want a beautiful "Glad" get this. Each 10c; dozen \$1.00.

**MRS. H. E. BOTHIN (Diener)**—Light geranium pink heavily ruffled, flame scarlet center. Strong, well built spikes, first class show and cut variety. One of the loveliest combinations in Gladioli. It has created a sensation wherever exhibited. One of the greatest and most perfect creations ever produced. Each 20c; half size 10c.

**PEACE**—Large grand white flower with pale violet feathering on lower petals. Each 10c; dozen 80c.

**PRINCEPINE**—Large crimson flower with white blotch. One of the best showy glads. Each 8c; dozen 80c; 100 \$7.00.

**ROSE ASH (Diener)**—Corinthian red shading into Ashes of Rose color on the outer edges. Lower petals light yellow speckled with ruby. Flowers large, well set on the spike. Each 15c; \$1.50 per dozen.

**SCARLET VELVET**—Dark red, large flowers. Each, 8c; dozen 80c; \$7.00 per 100.

**SCHWABEN**—Yellow, with carmine markings on lower petals. Each 10c; dozen \$1.00; 100 \$10.00.

**TWILIGHT (Kundred)**  
—Cream white, pointed petals, narrow stripe of pink on lower petals. Each 25c; \$2.50 per dozen.

**WAR**—Deep blood-red: large and late flowers, 15c each; \$1.50 per dozen.

**Kundred Glory Mixture.**  
Medium, 60c dozen.

**MIXED** — All shades and colors mixed. We believe that our mixture will please because it is made up of many good standard varieties. First size bulbs, 5c; dozen, 50c; 100, \$3.00. Second size bulbs, 4c; dozen 40c; 100 \$2.50.



A Corner of Our Field and Kiddies

**SEEDLING MIXTURE**—Our own origination. Something in shape, color and markings that you have not seen before; all new varieties. Each 25c; per dozen, \$2.50.

Usually we can supply our Gladiolus bulbs in three sizes. Large, medium and small. All of these sizes will bloom first year while the smaller sizes will be later to bloom and smaller spikes—yet they are sometimes better to increase than are the large bulbs. Usually the medium size bulbs sell at half the price of the large and the small for third price (example), America costs 6c; Medium size 2 for 6c and Small, 4 for 6c, 3 for 25c; 6 small for 25c, etc. At any rate we will see that you get your money's worth every time.

**GLADIOLUS SEED**—Good mixture at 25 cents per packet.

## Seeds

**WHITE CLOVER SEED**—80c per pound, 5 pounds for \$3.75. Golf course, Mixture grasses at 80c.

**LAWN GRASS**—Velvet mixture at 40c per pound; 10 lbs. \$3.75.

**NAVY BEAN**—Carefully selected at 15c for half lb., 30c per lb.; 5 lbs. for \$1.25.

Hardy Perennial Flower Seed. Delphinium, Gaillardia, Columbine, etc., at 15c per package.

**WE CARRY A FULL LINE OF GARDEN and FLOWER SEEDS. SEND FOR CATALOG OR LIST.**

January 13, 1926.

Received Gladiolus bulbs last spring and was very much pleased with them. There were about twenty colors out of the 25 bulbs. Will ask you to please send me your catalog, also to the friends whose names I enclose.—Mrs. O. E., Scared Heart, Minn.

# Price List

**NEW LOW PRICE FOR THIS COMING SEASON; TERMS CASH WITH ORDER or 25 per cent and balance C. O. D.**

Please send in your orders early so we can better (reserve the goods) fill your orders.

## APPLES AND CRABS—Page 3

|                     | Each   | 12      | 25      |
|---------------------|--------|---------|---------|
| Bearing sizes ..... | \$1.50 | \$15.00 | \$30.00 |
| 5 to 7 feet .....   | 1.00   | 10.00   | 20.00   |
| 4½ to 5 feet .....  | .75    | 7.00    | 13.50   |
| 3 to 4 feet .....   | .60    | 6.00    | 10.00   |

Prices as above except otherwise noted.

Apple or Crab, Grafts, \$2.00 per 50; \$4.00 per 100.

Seedlings—Apples and Crab Trees, 2 to 3 ft. sizes at 30c; \$3.00 per 12; 3 to 4 ft. sizes at 45c; \$4.00 per 12.

## PLUMS AND CHERRIES—Page 4

|                     | Each   | 12      | 25      |
|---------------------|--------|---------|---------|
| Bearing sizes ..... | \$1.50 | \$15.00 | \$30.00 |
| 5½ to 7 feet .....  | 1.00   | 11.00   | 21.50   |
| 4 to 5 feet .....   | .85    | 8.50    | 13.50   |
| 3 to 4 feet .....   | .70    | 7.00    | 12.00   |

## NATIVE SEEDLINGS—Plums

|                   |     |      |
|-------------------|-----|------|
| 4 to 6 feet ..... | .40 | 4.00 |
| 5 to 7 feet ..... | .50 | 5.00 |

**SPECIAL FOR FARM 10 Apple or Crabs—3 to 4 feet. or CITY ORCHARD 5 Plum or Cherry—3 to 4 feet. Same in 4 to 6 ft. trees (Value \$8.75) for \$ 7.50 Same in 5 to 7 ft. trees (value 12.50) for \$10.00 Our selection in varieties.** **\$5.00**

## MINNESOTA PEAR NO. 1, and MENDEL

|                    | Each   | 12      |
|--------------------|--------|---------|
| Two year old ..... | \$1.50 | \$15.00 |
| One year old ..... | 1.00   | 10.00   |

## BETA, ALPHA, CONCORD GRAPES—Page 5

|                                      | Each | 12      |
|--------------------------------------|------|---------|
| One year .....                       | .25  | \$ 2.00 |
| Two year strong .....                | .40  | 4.00    |
| Three year strong .....              | .50  | 5.00    |
| Strong .....                         | .30  | 2.50    |
| <b>CURRENTS, strong plants</b> ..... | .25  | 3.50    |
| Perfection, the very best red .....  | .35  | 3.50    |

## GOOSEBERRY—PEARL, CARRIE, DOWNING, RED JACKET

|  | Each   | 12      |
|--|--------|---------|
| Two year .....                             | \$0.30 | \$ 2.50 |
| Three year .....                           | .50    | 5.00    |
| COMO, (The new Minnesota Gooseberry) ..... | .35    | 4.20    |

## RASPBERRIES—Page 6

|                                   | 12     | 25     | 100     |
|-----------------------------------|--------|--------|---------|
| Strong one year .....             | \$1.00 | \$1.75 | \$ 5.00 |
| Transplanted, 2 year .....        | 2.00   | 3.50   | 10.00   |
| Latham, one year .....            | 1.30   | 2.50   | 6.00    |
| Latham, 2 year transplanted ..... | 2.60   | 5.00   | 12.00   |

## STRAWBERRY PLANTS—Page 7

|   | 25     | 100    | 200    | 1000    |
|---|--------|--------|--------|---------|
| Senator Dunlap, Premier, etc. ....            | \$0.50 | \$1.25 | \$2.30 | \$ 9.00 |
| New Minn., Breeding Farm Fruit .....          |        | 1.50   | 3.00   | 12.00   |
| Everbearing, all varieties .....              | .80    | 2.50   | 4.50   | 15.00   |
| Mastodon, Everbearing, the world's best ..... | 1.50   | 4.00   | 7.00   | 30.00   |

## FOLDING BERRY BOXES

The best made—\$2.00 per 100. Quart or pint size boxes, \$3.50 per 250; \$6.00 per 500.

## ORNAMENTAL FLOWERING SHRUBS—Pages 9-10-11

|                    |   |
|--------------------|---|
| 1½ to 2 feet ..... | \$0.35 each; \$3.50 per 12; \$25.00 per 100 |
| 2 to 3 feet .....  | .50 each; \$5.00 per 12; \$40.00 per 100    |
| 3 to 4 feet .....  | .75 each; \$7.50 per 12; \$60.00 per 100    |
| 4 to 5 feet .....  | 1.00 each; 10.00 per 12; \$80.00 per 100    |
| 5 to 6 feet .....  | 1.50 each; 15.00 per 12; 120.00 per 100     |

We are able to furnish you with many of the leading hardy shrubs in small sizes suitable to plant in your garden and in another year plant to the yard where wanted to make a show.

Prices at 10c and 15c each. Write us if interested.

## SHADE AND ORNAMENTAL TREES—Page 8

|                             | Each   | Per 10  |
|-----------------------------|--------|---------|
| 2 to 3 feet, Postpaid ..... | \$0.35 | \$ 3.00 |
| 3 to 4 feet, Postpaid ..... | .50    | 4.00    |
| 4 to 5 feet .....           | .70    | 6.00    |
| 5 to 6 feet .....           | 1.00   | 9.00    |
| 6 to 7 feet .....           | 1.50   | 12.50   |
| 7 to 8 feet .....           | 2.00   | .       |
| 8 to 10 feet .....          | 2.50   | .       |

Cut Leaf Weeping Birch, 5 to 7 ft. \$4.00; 6 to 8 ft. \$6.00.

Weeping Willow, 5 to 6 ft. 75c; 6 to 8 ft. \$1.00.

Horse Chestnut, Butternut and Walnuts, 3 to 4 ft. 80c; 5 to 7 ft. \$1.00.

|                                 |        |        |         |
|---------------------------------|--------|--------|---------|
| <b>Page 6</b>                   | Each   | 12     | 100     |
| Asparagus—2 year .....          | \$0.10 | \$0.50 | \$ 3.00 |
| Rhubarb—Red, juicy, large ..... | .25    | 1.90   | 12.00   |
| Chives or Grass Onions .....    | .15    | 1.00   | .       |
| Horse Radish .....              | .10    | 1.00   | 8.00    |

**Evergreens, page 8.** Norway Spruce and American Arbor Vitae, 12 to 18 in. 75c each; \$8.00 per dozen; 18 to 24 in. \$1.00 each; \$11.50 per dozen; 24 to 30 in. B. & B. \$1.50 each; \$16.00 per dozen; 3 to 4 feet, \$3.00 each; \$35.00 per dozen; 4 to 5 ft. \$4.00 each; \$45.00 per dozen; 5 to 6 ft. \$6.00 each; \$60.00 per dozen.

**MUGHO PINE**, 12 to 18 in. \$3.50, balled and burlapped.  
**COLORADO BLUE SPRUCE**—Brightest Blue, 18 to 24 in. \$7.50; Brightest Blue, 2 to 3 feet, \$10.00; Green Blue, 18 to 24 in. \$4.00; Green Blue, 2 to 3 ft., \$6.00.

If interested in seedlings and smaller evergreens write for prices. We will make you a very attractive price on larger Evergreens. Write us your needs.

**HEDGE PLANT PRICES—Pages 12-13**

Priced per 100—25 at 100 Rates

|                                   | 8-12<br>inch | 12-18<br>inch | 18-24<br>inch | 2-3 ft. |
|-----------------------------------|--------------|---------------|---------------|---------|
| Barberry Thunbergii .....         | \$ 9.00      | \$20.00       | \$30.00       | \$50.00 |
| Cotoneaster .....                 | 10.00        |               | 35.00         | 48.00   |
| Buckthorn .....                   | 7.00         | 9.00          | 10.00         | 20.00   |
| Caragana (Siberian) Pea Tree..... | 6.00         | 8.00          | 10.00         | 20.00   |
| Russian Olive .....               |              | 6.00          | 7.00          | 10.00   |
| Van Houttei Spirea .....          |              | 13.00         | 20.00         | 25.00   |
| Alphin Currant .....              | 10.00        | 15.00         |               |         |
| New Red Leaved Barberry .....     | 20.00        | 80.00         |               |         |

**ARTEMISA**—Dark Green, finely cut foliage, 3 to 4 ft. at 25c each; 100 for \$15.00.

**HARDY PERENNIAL PLANTS—Page 14-15**

All plants not otherwise priced; extra strong, 30c each; \$3.00 per dozen. Medium strong, 25c each; \$2.50 per dozen.

**BLEEDING HEART**—60c each; 5 for \$2.50.

**PANSY PLANTS**—Mixed colors, 50c per dozen, postpaid.

These are the Master Giant Pansy, seed costs better than \$8.00 per ounce, so we give you quality.

**LILY REGALE**—The Hardy Easter Lily. Very fragrant, white flowers. Large bulbs, 50c; small bulbs, 25c.

**LILY AURATUM**—(Gold banded) 40c each; \$4.00 per 12.

**CANNA**—Roots, broad leaves, red and yellow flowers, \$1.90 per 12; \$6.00 per 50. (Store in cellar over winter.)

**PEONIES BY COLOR—Page 16**

For Dozen rates, multiply by 10.

Pink, 50c each; Red, 60c each; White, 50c each; strong 2-year old plants at 75c each; large clumps at \$1.50 each and up, unless otherwise priced in catalog.

**CLIMBING VINES—Page 23**

First size, 75c each; second size, 50c each.

**ROSES—Page 23**

Two year strong, \$1.00 each; \$8.00 per dozen if not noted.

**CLIMBING ROSES**—75c each; \$6.00 per dozen, 6 for \$3.00.

**SHADE AND ORNAMENTAL TREES—Page 8**

**RUSSIAN GOLDEN WILLOW, LAUREL LEAF WILLOW, SILVER POPLAR, NORWAY POPLAR** (the sudden saw log), **ASH, BOXELDER.** Prices below.

|                        | Each | 10   | 100     | 1000    |
|------------------------|------|------|---------|---------|
| 1 to 2 ft. trees ..... | \$   | \$   | \$ 5.00 | \$25.00 |
| 2 to 3 ft. trees ..... |      |      | 7.50    | 50.00   |
| 3 to 4 ft. trees ..... | .20  | 1.50 | 10.00   | 75.00   |
| 4 to 5 ft. trees ..... | .35  | 3.00 | 25.00   |         |
| 5 to 6 ft. trees ..... | .50  | 4.00 | 35.00   |         |
| 6 to 7 ft. trees ..... | .75  | 6.00 | 50.00   |         |
| 7 to 8 ft. trees ..... | 1.00 |      |         |         |

Cuttings, Postpaid, \$1.00 per 100; \$6.00 per 1000.

January 27th, 1927.

The trees we got from you last spring all grew and did fine. The Roses and Peonies would have bloomed, but a hot, dry spell dried up the buds. The Iris, Phlox, Golden Glow, Dahlias and Gladiolus all grew and bloomed beautifully. . . . I was very much pleased with the 25 Gladiolus and I am going to order some more Dahlias, Gladiolus, etc., as soon as I get the catalog. Hoping to hear from you.—Mrs. M. W., Henning, Minn.

From Northome, Minnesota. Another \$125.00 order for hedge plants and trees and well pleased.

Another from Holmquist, South Dakota, sent us a \$30.00 order and said, "send us best assortment in apples and crabs."

We have pleased others—we can please you.



# Roses

**FRAU KARL DRUSCHKI**—Snow white, very large, perfect form. A vigorous grower and free bloomer. Bright, heavy foliage.

**GENERAL JACQUEMINOT**—This might be called the rose for the million, for it is still a universal favorite. Bright crimson scarlet, exceedingly rich and velvety.

**MARGARET DICKSON**, creamy white.

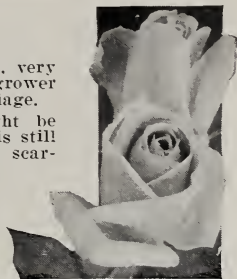
**MRS. JOHN LAING**—Immense blooms of soft, clear pink, very fragrant on stiff, stocky stems. Produces a longer succession of blooms than most of its class and the bush is not quite so tall and rampant.

**MAGNA CHARTA**—Bright, clear pink, flushed with violet crimson; flowers large, fine form, sweet, very double and free bloomer.

**MARSHALL P. WILDER**—Dark red; dark crimson.

**ULRICH BRUNNER**—Large cherry red.

**BABY RAMBLER**—Red. Dwarf. Flowers in clusters.



Frau Karl Druschki

## RUGOSA ESKIMO HARDY ROSES

Very Double

**HANSA**—Deep red.

**BELLE POITEVINE**—Bright rose pink.

**AMELLIE GRAVEREAUX**—Dark purplish red.

**F. J. GROOTENDORST**—Red flowers in clusters.

**RUGOSA HYBRID**—Brilliant red clustered flowers.

**CONRAD F. MEYER**—Clear, silvery pink.

**SIR THOMAS LIPTON**—Snow white.

**MME. VILLEMENOT**—Rose pink, large. All these hardy Eskimo Roses will live anywhere without protection.



RUGOSA ROSES,

## CLIMBING ROSES

**CRIMSON RAMBLER**—Crimson color.

**EXCELSA**—Dark red, strong grower.

**SEVEN SISTERS**—Blush pink.

## CLIMBING VINES

**CLEMATIS** *Paniculata*, white. *Clematis Jackmanni*, red.

**AMPELOPSIS**, —  
(Boston Ivy)  
dense ivy-like leaves.

**VIRGINIA CREEPER** (American Ivy)  
Vigorous grower.

### WINDOW BOX PLANTS

Coleus 15c each;  
Geraniums Select, 40c each; Vinca, variegated Vine, 35c each; Blue Lobelia, everblooming, 15c; Petunia, all colors at 15c; Sweet Alyssums, white, at 15c. Ready for delivery May 20th.



Virginia Creeper

May 13, 1926.

Plants received O. K. I am sending money order for \$7.75 as per bill. Postage is high, but plants cheaper to be in A.-No. 1 condition, so they may be cheaper in the end.—E. W. E., Galata, Mont. (1000 Sunbeam ordered.)

April 24, 1926

Enclosed find———, due you. Received the Nursery Stock yesterday. It looks fine.—Mrs. J. A. S., Rothsay, Minn.



A Beautiful effect of Lawn Trees and Colorado Blue Spruce



Flower Garden where Hardy Perennials are used

### HOME BEAUTIFYING SUGGESTIONS

Let us help you—the cost will be very small and if the stock is bought from us, no charge is made.

Make up a pencil sketch, mark all lines, roads, alleys, trees, shrubs all ready in place, if any.

Attractive landscapes or home plantings do not “happen”, but require forethought and knowledge of plant life. Our knowledge or experience is at your command.

If you are interested in improving your home grounds, or prefer to work out your own problems we have a number of booklets that will prove of interest:

**HOME BEAUTIFYING SUGGESTIONS.** 48 pages, with colored illustrations and describing many sorts not listed otherwise; or adapted to more favorable sections.

THE ABOVE WILL BE SENT for 10c in stamps.

## Derrisol Summer Spray

Recommended by experiment Stations. One ounce bottle 40c by mail. Makes six gallons of spray.



**SCALECIDE** The complete dormant spray. Pleasant to use. Non-poisonous. Kills scale, insects, eggs, larvae and disease cankers and fungous spores wintering on the plant. Mixed instantly. Dilute 1 15. Price gallon \$1.75.

**SULFOCIDE** For all kinds of fruits, vegetables, and flowers. Controls: apple scab, brown rot of peaches, plums, and cherries; blight and rot of potatoes, tomatoes and melons; mildew and rust of flowers and shrubs. Convenient, economical, effective. Dilute 1-200. Quart, \$1.00.

Be sure to write for Spray Books and Pamphlets—they are FREE.