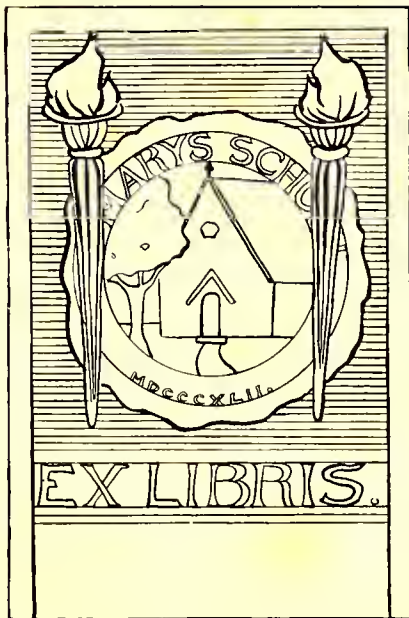


Digitized by the Internet Archive  
in 2012 with funding from  
University of North Carolina at Chapel Hill

<http://archive.org/details/muse1921sain>



•

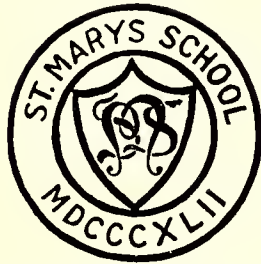
7

PRESSES OF  
EDWARDS & BRIGHTON PRINTING CO.  
RALPHIGH, N.C.

# THE MUSE

PUBLISHED BY

*The Muse Club*



VOLUME TWENTY-THREE

*1921*

THE YEAR BOOK OF THE  
STUDENTS OF ST. MARY'S SCHOOL  
RALEIGH, NORTH CAROLINA

## *Foreword*

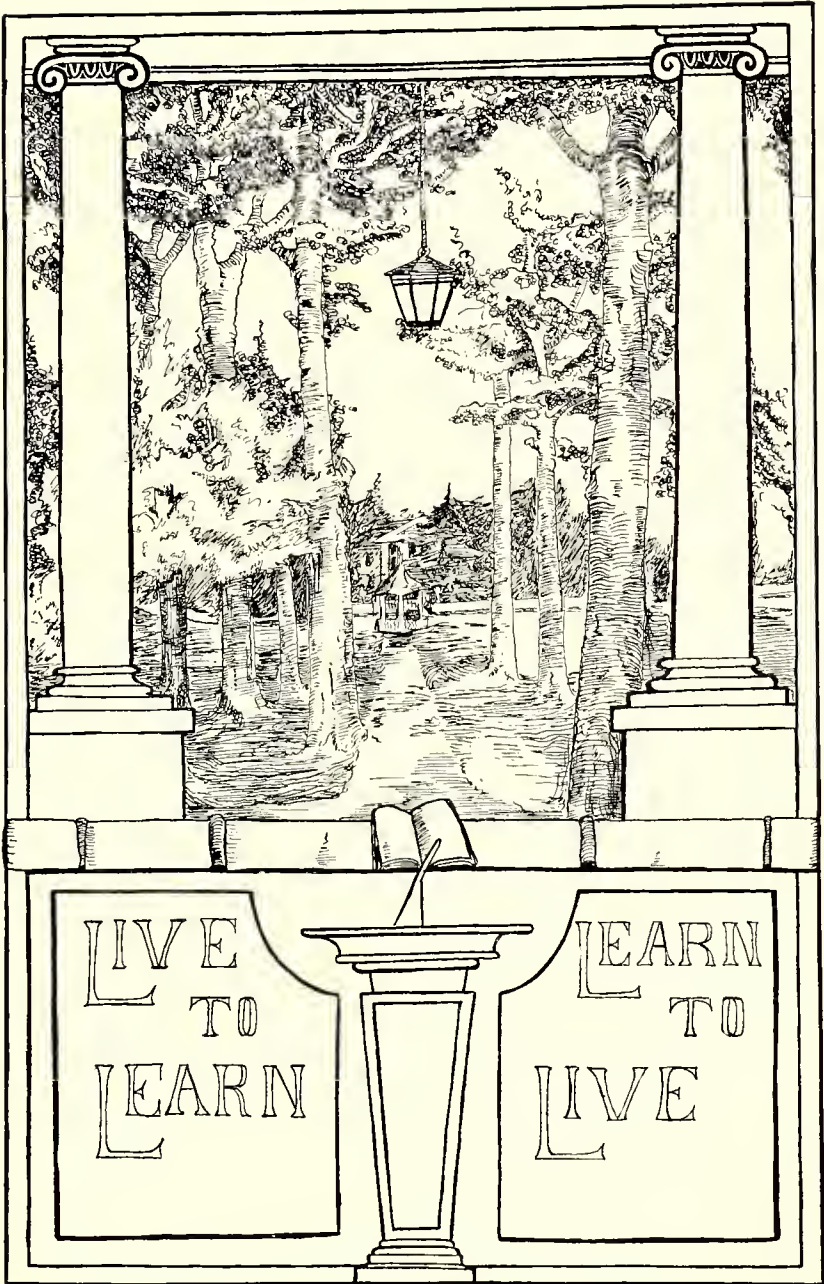
*The past is like a book that's closed—  
If we may quote the sages—  
But come with us a little while  
And peep between the pages.*

*And pictured there we see the scenes  
And places that we love—  
The roses climbing o'er the Rocks,  
The oak trees in the grove.*

*We find the faces of our friends,  
And rhymes, and jokes and fun,  
That tell us of the glad, good times  
In nineteen twenty-one.*

—K. M. W.





LIVE  
TO  
LEARN

LEARN  
TO  
LIVE

TO

MR. ERNEST CRUIKSHANK

WHOSE SINCERE INTEREST IN OUR HAPPINESS AND  
READY SYMPATHY WITH OUR TRIALS THROUGH THE  
YEARS OF HIS SERVICE AT ST. MARY'S HAVE WON  
THE LOVE AND TRUST OF EVERY TRUE ST. MARY'S  
GIRL, AND WHOM WE WILL REMEMBER ALWAYS AS  
OUR FRIEND, THIS TWENTY-THIRD VOLUME OF THE  
MUSE IS DEDICATED BY THE SENIOR CLASS FOR THE

ST. MARY'S GIRLS OF

1920-1921



MR. CRUIKSHANK  
St. Mary's, 1903-1921

## *An Appreciation*

It is difficult for the St. Mary's girls of the past eighteen years to imagine St. Mary's without "Mr. Cruikshank," and the fact that he is leaving the School this year is a matter of keen interest and of deep regret to them. A devoted, an efficient and an untiring worker he has had much to do with making St. Mary's what it is today.

But most of all will his absence be felt by the girls because to them he has been a friend who has never grown tired of listening to their petty individual troubles, and it is to him that they turn for advice on any matter requiring personal interest and sympathy.

Mr. Cruikshank has had a very intimate part in developing the student life of St. Mary's as it is today. The School Songs, the Muse, and many of the student occasions which have now come to be looked upon as a part of the round of the year had their inception or their inspiration from him.

To us of today it seems that "Alma Mater," "In a Grove of Stately Oak Trees," and the other school songs have always been a part of St. Mary's; that there must always have been Alumnae Day celebrations and Alumnae Day luncheons; that the "Christmas Tree Celebration," the Inter-class Parties, the "Junior-Senior Banquet," and the "School Party" are old traditions. As a fact all of these, not to mention others, have come into being in the past eighteen years, and each as part of the general purpose to further school spirit and to increase both the student and the alumnae devotion to St. Mary's.

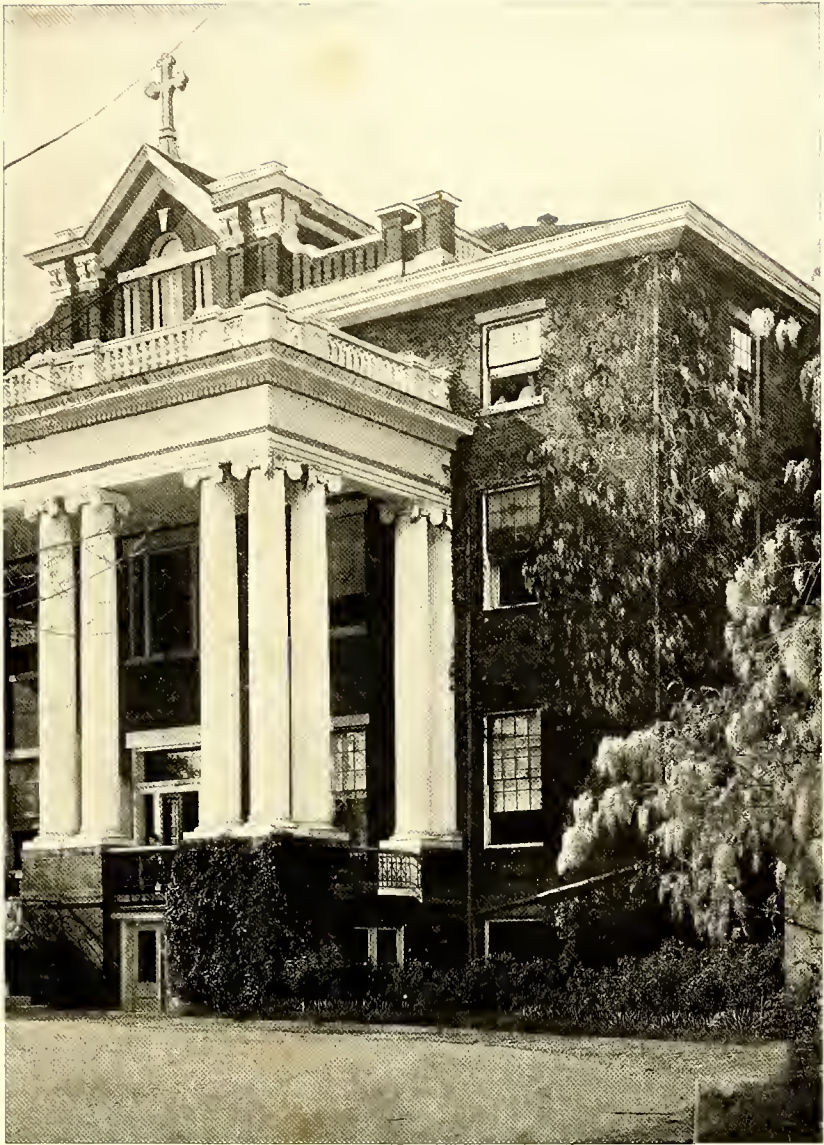
The progress and right development of St. Mary's and of the girls who make and are St. Mary's has been the absorbing interest of Mr. Cruikshank during his years here. That others may continue the work with as untiring zeal and whole-hearted devotion and that he may meet with added success as he goes elsewhere is the earnest wish of the friends to whom he has meant so much at his and our "beloved St. Mary's."



For Auld Lang Syne







## *Alma Mater*

*Time: "Believe Me if All Those Endearing Young Charms."*

*St. Mary's! wherever thy daughters may be  
They love thy high praises to sing,  
And tell of thy beauties of campus and tree  
Around which sweet memories cling;  
They may wander afar, out of reach of thy name,  
Afar, out of sight of thy grove,  
But the thought of St. Mary's aye kindles a flame  
Of sweet recollections and love.*

*Beloved St. Mary's! how great is our debt!  
Thou hast cared for thy daughters full well;  
They can never thy happy instructions forget,  
Nor fail of thy virtues to tell.  
The love that they feel is a heritage pure;  
An experience wholesome and sweet.  
Through fast rolling years it will grow and endure;  
Be a lamp and a guide to their feet.*

*May the future unite all the good of thy past  
With the best that new knowledge can bring.  
Ever onward and upward thy course! To the last  
Be thou steadfast in every good thing.  
Generations to come may thy fair daughters still  
Fondly think on thy halls and thy grove  
And carry thy teachings—o'er woodland and hill—  
Of earnestness, wisdom and love.*

*H. E. H., 1905.*

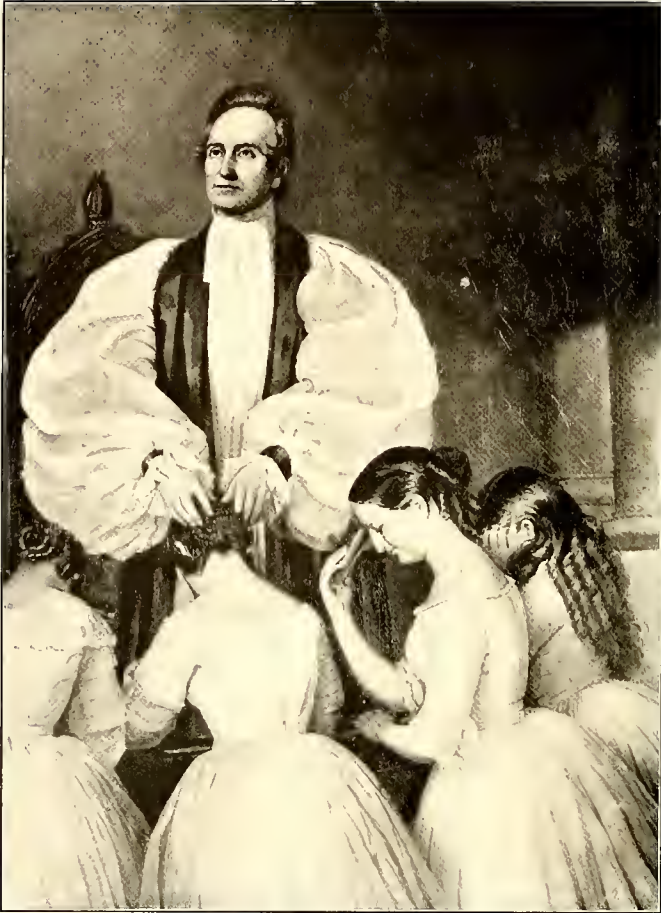




REV. ALDERT SMEDES, D.D., 1810-1877

*Founder (1842) and First Rector (1842-1877) of St. Mary's School*

At the time of the death of Dr. Smedes a tribute was paid to his memory by the Bishop in these words: "I take this occasion to express publicly, as my judgment, that Dr. Smedes accomplished more for the advancement of the Church in this Diocese, and for the promotion of the best interests of society within its limits, than any other man who ever lived in it. Under his care, and very much as the result of his intelligence, his firmness, and his tender affection for them, there went out from St. Mary's School, Raleigh, every year a number of young girls who, in culture, in refinement, and still more in elevation of moral and religious character, would compare favorably with the pupils of any other institution in this country. He knew not only how to teach, but how to govern, and to make himself honored as well as loved, and to constrain his pupils to feel that the years spent under his care were at the same time the happiest and most useful of their lives. He has gone to his reward, but his work remains, and will remain from generation to generation."—*Haywood's "Bishops of North Carolina," page 193.*



#### THE CONFIRMATION GROUP

This portrait, representing Bishop Ives in the act of confirming a class of four girls, has hung in the parlor at St. Mary's for more than half a century. It was painted for Dr. Aldert Smedes by William Hart about the year 1844.

St. Mary's girls of the time sat for Mr. Hart while he was at work on the painting, but it has never been fully established whether the girls' figures are the portraits or merely "fancy pictures."



BISHOP RAVENSCROFT

This portrait of Bishop Ravenscroft was obtained by Dr. Smedes, some years before the War, from Mr. Chas. P. Mallet, of Fayetteville, for whom it was painted in 1829-30 by Jacob Eicholtz, a celebrated Philadelphia painter.

These facts are given by Mr. Marshall Delancy Haywood in his "Bishops of North Carolina," and to Mr. Haywood the MUSE is also indebted for the use of the plates from which the paintings are reproduced here.

## *When Miss Katie Was a Teeny Little Girl*

*St. Mary's was a youngster, not a venerable old dear,  
When Miss Katie was a teeny little girl;  
Dr. Aldert Smedes, the Founder, was a living presence here,  
When Miss Katie was a teeny little girl.  
His forceful personality, his eloquence and charm,  
His loving care which sheltered, as it were, his girls from harm,  
Gave a sense of sweet protection free from outside world's alarm—  
When Miss Katie was a teeny little girl.*

*Our Confirmation Grandmas used to pull each other's curls,  
When Miss Katie was a teeny little girl;  
For even in the '50's girls, you know, were only girls,—  
When Miss Katie was a teeny little girl.  
The stage coach rolling through the Grove caused then a great to-do,  
The small front porch was full of girls—I fear the windows too;  
You'd hear Madame Clement's pupils most politely parlez-vous—  
When Miss Katie was a teeny little girl.*

*The traditions of St. Mary's were but being formed, you know,  
When Miss Katie was a teeny little girl;  
The precept and example of the Founder made them so,  
When Miss Katie was a teeny little girl;  
His teachers and his pupils cherished deep his high ideal,  
Their successors to the present strive to keep that ideal real;  
To all who love St. Mary's those days make deep appeal—  
When Miss Katie was a teeny little girl.*

*E. C., 1920.*



MISS KATE MCKIMMON

*"Constant as the Northern Star,  
Of whose true, fix'd, and resting quality  
There is no fellow in the firmament."*

Miss Kate McKimmon, known affectionately as "Miss Katie" to all St. Mary's girls, is this year in her fifty-fourth year of devoted service to the School.

Entering as a little girl in 1867, from pupil she became teacher, and continued teaching without interruption until 1919.

As "Dormitory Mother" she won the hearts of her girls for many years, and her work for and in the Chapel has been a very special part of her.

An unreconstructed Southerner but loyal American, whole-hearted in her devotion to School and to Church, St. Mary's would hardly seem St. Mary's without "Miss Katie."

## *The "Thirteen Originals"*

*Alin: Hughes, '18, blended the thought of the "Original Thirteen" of the "Stage Coach Days" and of the "Granddaughters" in her prize verses in the metre of Alfred Noyes' "Forty Singing Seamen," which were read at the 75th Anniversary Celebration, May 12, 1917.*

*The following verses are an extract only:*

*Away from home and mother off to boarding school we rolled,  
Thirteen wondering school girls in the big stage coach.  
The coach got there at twilight, and through the Grove we bowled,  
Wondering if the teachers had noted our approach.  
But the door was open wide,  
Sending golden light outside,  
And we thought they must have noted our approach;  
Must have long been warned of us by rumblings from the coach.*

\* \* \* \*

*We learned to love those dear people and East Rock Chapel small;  
We'll carry all their pictures in our minds where'er we go,  
But when we were just school girls, without a great life call,  
How could we then prophesy how our dear school would grow?  
We were school girls just like others;  
We were not then your grandmothers;  
We were thirteen wondering school girls, so how could we then know?  
We were the thirteen first St. Mary's girls. Of course we couldn't know.*

\* \* \* \*

*To you, the girls of '21, we originals would say,  
Our blessings now are with you, as you each one ought to know.  
As we have loved St. Mary's, may you ever love it, too,  
And carry on her teachings as on your way you go.  
If we had known of you  
We might have been more true,  
But we were only school girls, so of course we did not know;  
The first thirteen St. Mary's girls, of course we could not know.*





STAGE COACH PICTURE

The original of the "Stage Coach Picture," so often used in THE MUSE to contrast the old days with later ones, was a drawing by Mrs. Gustave Blessner. Mr. Blessner, Musical Director at St. Mary's in the '40s, had it lithographed for use on the cover of some waltzes which he composed and had published in 1845. On the title page of the music, in addition to the Stage Coach picture, was printed: "The Flowers of the South: A Collection of Characteristic Waltzes, Composed for the Piano, and Dedicated to the Young Ladies of St. Mary's School, Raleigh, N. C., by Gustave Blessner."

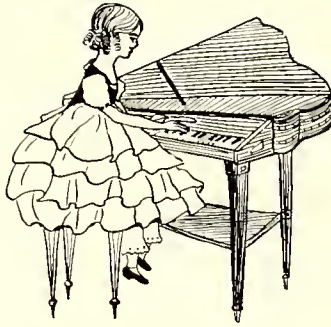
## *St. Mary's Alumnae Association*

### *Officers, 1920-'21*

<i>Honorary Vice-Presidents</i> .....	{ MRS. I. MCK. PITTENGER, Raleigh MRS. B. S. LEAK, Durham
<i>Honorary Secretary</i> .....	MISS KATE MCKIMMON, Raleigh
<i>President</i> .....	MISS REBECCA HILL SHIELDS, Scotland Neck
<i>Vice-President</i> .....	MISS SUSAN MARSHALL, Raleigh
<i>Secretary</i> .....	MISS LOUISE T. BUSBEE, Raleigh
<i>Treasurer</i> .....	MRS. ERNEST CRUIKSHANK, Raleigh

### *Alumnae Council*

MRS. J. S. HOLMES, Chapel Hill, N. C., until 1921  
 MRS. W. A. MONTGOMERY, Raleigh, N. C., until 1921  
 MRS. J. J. BERNARD, Raleigh, N. C., until 1922  
 MISS FLORENCE SLATER, New York City, until 1922  
 MISS ANNIE S. CAMERON, Hillsboro, N. C., until 1923  
 MRS. JANE WITHERS, Raleigh, N. C., until 1923



*Granddaughters and Great-Granddaughters of St. Mary's*

*Colors: Light Blue and White*

*Motto: Lest We Forget*

*Song: Auld Lang Syne*

*Flower: Pansy*

FRANCES VENABLE . . . . . *President*  
EMILY HART . . . . . *Secretary-Treasurer*

MARY GREGG AMBLER, of Summerville, S. C.  
d. of Mary Gregg, of Galveston, Tex.  
gd. of Mary Wilmerding, of Galveston, Tex.

ELEANOR HOPE COBB, of Bay Head, Fla.  
d. of Eleanor Hope Atkins  
gd. of Eleanor Hope Swain, of Chapel Hill

WYNDHAM ASHE, of Raleigh  
d. of Wyndham Trapier, of Raleigh  
gd. of Gertrude Haywood, of Raleigh

DAISY STRONG COOPER, of Oxford  
d. of Julia Horner, of Oxford

HELEN BOYKIN, of Boykin, S. C.  
FLORENCE BOYKIN, of Boykin, S. C.  
gds. of Martha Harllee, of Florence, S. C.

MARGARET ELLIOTT, of Wilmington  
d. of Mabel Green, of Fayetteville

ADELAIDE BOVLSTON, of Raleigh  
d. of Adelaide Snow, of Raleigh  
gd. of Betsy Boylan, of Raleigh  
ggd. of Mary Kinsey, of Raleigh

KATE GIDDENS, of Norfolk, Va.  
gd. of Mary E. Pugh, of Pitt County

FRANCES GREEN, of Raleigh  
gd. of Sara Frances Atkinson, of Johnston  
County

ALICE BRUNSON  
d. of Alice Smallbones, of Wilmington

EMILY HART, of Tarboro  
d. of Jessie Williamson, of Tarboro

VIRGINIA HARRISON, of Enfield  
d. of Mary S. Garrett, of Enfield





THE "GRANDDAUGHTERS" OF 1920-21

MABEL HAWKINS, of Jacksonville, Fla.  
gd. of Eliza C. London, of Pittsboro.

ALICE HUGHES, of Henderson  
gd. of Alice Swann  
gdd. of Penelope Wiley

ADDIE HUSKE, of Fayetteville  
d. of Addie B. Riddick, of Fayetteville

VIRGINIA LANIER JORDAN, Crescent City, Fla.  
gd. of Nellie Gifford, of Camden, S. C.

JULIA MARKS, of Montgomery, Ala.  
d. of Jane Hawkins Andrews, of Raleigh  
gd. of Julia Johnston, of Charlotte

MARY MCCOY, of Charlotte  
gd. of Mary Lindsay Hargrave, of Wil.

DOROTHY NIXON, of Hertford  
MARJORIE NIXON, of Hertford  
gds. of Isa Gordon, of Hertford  
gds. of Cornelia Townsend, of Hertford

DOROTHY SIMMONS, of Goldsboro  
d. of Lossie Barnes, of Tarboro

ELIZABETH STEARN, of Belhaven  
d. of Elizabeth Bonner Ebron, of Belhaven

ELIZABETH TUCKER, of Plymouth  
gd. of Isa Gordon, of Hertford

FRANCES PRESTON VENABLE, of Chapel Hill  
d. of Sallie Manning, of Chapel Hill

MAYON WALTERS, of Raleigh  
d. of Laura Faison, of Raleigh

MARJORIE WILLARD, of Wilmington  
d. of Mary West, of Wilmington

MARY E. YARBOROUGH, of Raleigh  
d. of Martha Ellis, of Raleigh  
gd. of Catherine Clements, of Raleigh

The "National Campaign" to raise \$100,000 outside of the Carolinas, with headquarters in New York City, was inaugurated in the fall of 1920. Mrs. William G. McAdoo ("Nell Wilson") is the National Chairman, and other prominent alumnae are taking active parts in the campaign.

In arousing the interest of St. Mary's girls in the campaign a very attractive series of illustrated posters has been issued to the Alumnae, and the written message on one of them has so much appeal that it is reproduced in part here:

## *The Endowment Campaign*

*They may wander afar, out of reach of thy name,  
Afar, out of sight of thy grove,  
But the thought of St. Mary's eye kindles a flame  
Of sweet recollections and love.*

### *Are You One of Those Girls—?*

- Who wore Quaker-bonnet and shawl; and danced the polka, mazourka, and lancers, in the parlor of the old School?
- Who saw the Grove filled with tents of the Union Army, and played soldier on Hillsboro Street?
- Who feasted on "sorghum" and played foot-ball and prisoner's base in the driveway, after dinner?
- Who wore homespun to classes, but a blue uniform for Sunday and street?
- Who shared boxes from home in delectable "spreads" about the old "base-burner" stoves; or were caught illegally making candy or rarebit?
- Who voraciously devoured midday luncheons of apples and crackers and cheese, or ginger-bread?
- Who dreaded the writing of abstracts of Chapel addresses on Fridays, and the awful "reading out" of marks?

### *Or Are You One of Those Later Girls—?*

- Who, in spring, joined in breathless violet-hunts at the lower end of the Grove; or excitedly searched there for candy eggs, on Easter Monday?
- Who spent all your pocket-money on Royster, for sweets; or anxiously awaited "permission" to go down town to Cally's?
- Who each noon were impatiently jostled in the mail line in front of East Rock?
- Who every morning ignored the rising bell, and had to rush, half dishevelled, to breakfast?
- Who "dressed up," and bobbed for apples, at Hallowe'en?
- Who joined in desperate pillow-fights; and in "circus nights," with curled trunk-straps as tails for the trained monkeys in bloomers?
- Who kept waiting "suitors" nervously twisting their hats in the school-room, of a Saturday night?
- Who promenaded in the Grove to watch busy squirrels, and noisy red-headed wood-peckers, and the Riding Club's horses?
- Who drank in the sunsets seen at Vespers, through the Chapel windows?
- Who came to St. Mary's with a tearful face, and went away with a lumpy throat?

### *Are You One of Those Who Count*

"AN OLD ST. MARY'S GIRL"

As—

THE PROUDEST TITLE ON EARTH

?

IF SO, YOU CAN PROVE IT!

by

2 - 6 - 0

## *The Endowment Campaign*

The Special Fund for St. Mary's was planned in 1916 and work begun to secure it. The goal was first set at \$250,000. Since this time the general plan has been extended and the organization enlarged. The goal is now fixed at \$300,000.00. Almost two-thirds of this sum has been secured in pledges and money.

The remainder must be had. So all who have any intelligent and real concern for St. Mary's feel. We want to sponge out the old debt; enlarge the infirmary; create an endowment of at least \$100,000.00; build a new dormitory to house the Juniors and Seniors; build a new hall of science. These are the chief needs. We say needs; they are not frills but the solid, sensible needs, the actual conditions of progress.

Of course we do not want to make the infirmary too alluring and entice the whole school into it; rather we want to keep everybody out but if students will and must come in then we wish them to find the place as roomy and comfortable as possible. Some endowment is like a life-insurance policy, protection against disaster. Our Seniors and Juniors deserve a dormitory house more in keeping with their attainments, perhaps with their dignity. Our ambitious scientists could shine better in a scientific building. This is again no argument for luxury. If they discover no new elements or comets they can at least learn more of the world we live in and more of the fine art of how to manage a home.

So we keep on playing the same tune, harping on one string, if you will. We put it in the *MUSE*; we put it in the papers everywhere. Here we've got it in the annual. We talk it and write it and print it and go at it again. It may be that we shall say nothing about it next year—because by the time the next annual appears the fund will be finished.

*W. W. W.*



THE RT. REV. JOSEPH BLOUNT CHESHIRE, D.D.  
*Bishop of North Carolina*

President of the Board of Trustees of St. Mary's and  
Chairman of the Executive Committee  
from the Purchase of the School by the Church in 1897 to the Present Time

# *The Board of Trustees*

## *The Bishops*

RT. REV. JOS. BLOUNT CHESHIRE, D.D., *Chairman* . . . . . Raleigh, N. C.  
RT. REV. WM. ALEXANDER GUERRY, D.D. . . . . Charleston, S. C.  
RT. REV. JUNIUS M. HORNER, D.D. . . . . Asheville, N. C.  
RT. REV. THOS. C. DARST, D.D. . . . . Wilmington, N. C.

## *Clerical and Lay Trustees*

### NORTH CAROLINA

REV. J. E. INGLE, Raleigh	REV. M. A. BARBER, Raleigh
DR. R. H. LEWIS, Raleigh	REV. ISAAC W. HUGHES, Henderson
*MR. D. Y. COOPER, Henderson	COL. CHAS. E. JOHNSON, Raleigh
MR. GRAHAM ANDREWS, Raleigh (until 1924)	MR. W. A. ERWIN, Durham (until 1921)

### EAST CAROLINA

REV. GEO. F. HILL, Elizabeth City	REV. R. B. DRANE, D.D., Edenton
MR. GEO. C. ROYALL, Goldsboro (until 1924)	MR. FRANK WOOD, Edenton (until 1921)

### SOUTH CAROLINA

REV. T. T. WALSH, Yorkville	REV. S. C. BECKWITH, Charleston
DR. WM. EGGLESTON, Hartsville (until 1923)	MR. T. W. BACOT, Charleston (until 1923)

### ASHEVILLE

REV. F. P. LOBBELL, Rutherfordton	REV. H. N. BOWNE, Tryon
HON. WM. A. HOKE, Lincolnton (until 1921)	MR. W. D. ANDERSON, Gastonia (until 1921)

## *Executive Committee*

RT. REV. J. B. CHESHIRE, D.D., <i>Chairman</i>	
COL. CHAS. E. JOHNSON	DR. R. H. LEWIS
HON. W. A. HOKE	MR. GEORGE C. ROYALL
*MR. D. Y. COOPER	

## *Secretary and Treasurer*

DR. K. P. BATTLE, JR.

## *Committee on Raising the Building and Endowment Fund*

REV. ISAAC W. HUGHES, <i>Chairman</i>	
MR. GEORGE C. ROYALL	MR. GRAHAM H. ANDREWS

\* Deceased.

## *Hail, St. Mary's*

*In a grove of stately oak trees,  
Where the sunlight lies,  
Stands St. Mary's true and noble,  
'Neath the Southern skies.*

*Far and wide, oh sound her praises,  
Chorus full and free,  
Hail, St. Mary's, Alma Mater,  
Hail, all hail to thee!*

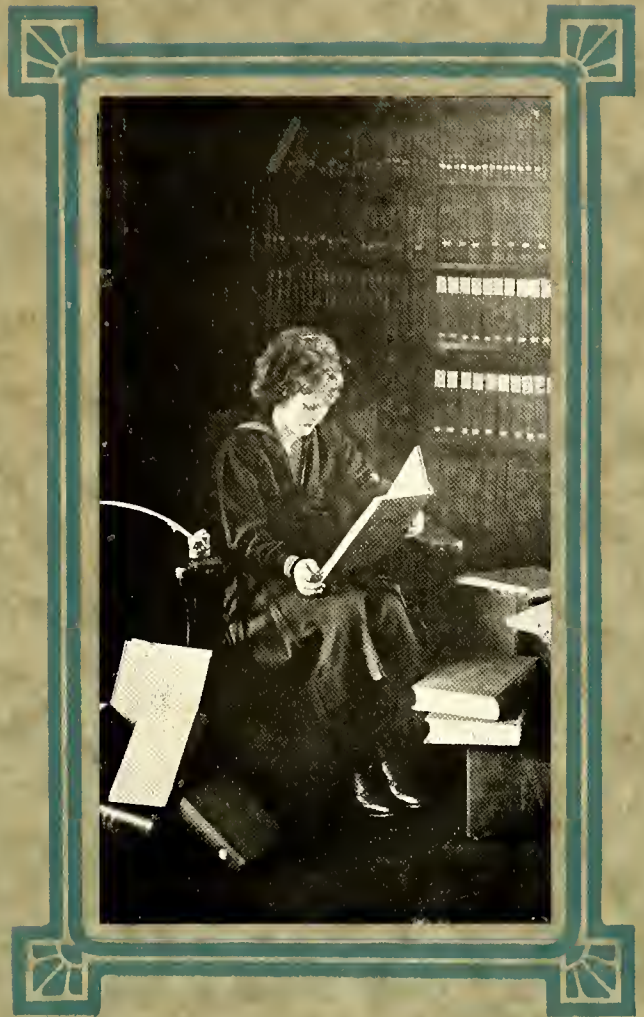
*Well we love the little chapel,  
Ever hold it dear;  
Hear the echoes of the music,  
Rising soft and clear.  
Far and wide, etc.*

*There the ivy and the roses  
Climb the old stone wall,  
There the sweet, enticing bird-notes  
Sound their magic call.  
Far and wide, etc.*

*And the bonds of friendship strengthen  
As her beauties charm,  
We draw close to Alma Mater,  
Trust her guiding arm.  
Far and wide, etc.*

*Adapted from Margaret Mason Young. 1899.*

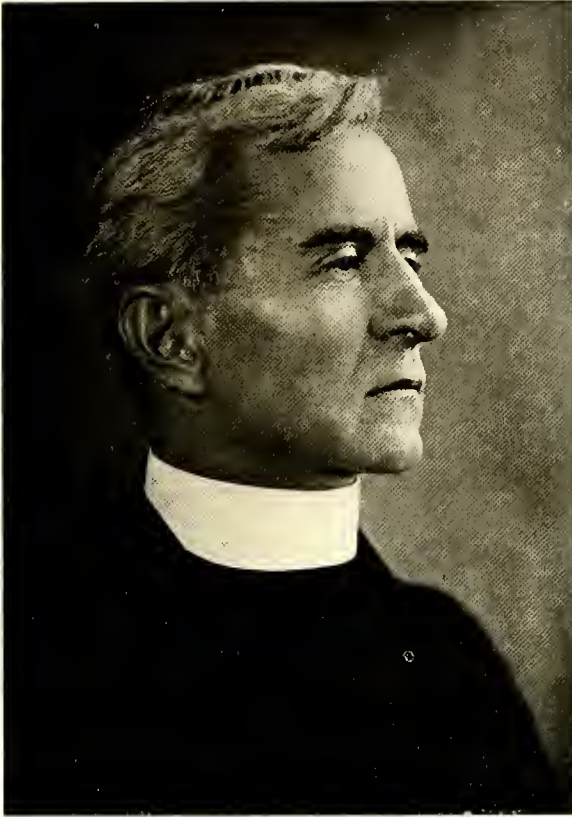




# The School







THE REV. WARREN WADE WAY  
*Sixth Rector of St. Mary's School, 1918—*



MRS. CAROLINA V. PERKINS  
*Lady Principal, 1919—*



MISS OPHELIA STONE STONE  
*Academic Head, 1920—*

# *St. Mary's School*

## *Faculty and Officers, 1920-21*

REV. WARREN W. WAY . . . . . *Rector*  
MRS. CHARLES E. PERKINS . . . . . *Lady Principal*  
MISS OPHELIA S. STONE . . . . . *Academic Head*  
ERNEST CRUIKSHANK . . . . . *Secretary and Business Manager*

### *The Academic Department*

REV. WARREN W. WAY . . . . . *Bible and Ethics*  
A.B., Hobart College; General Theological Seminary  
OPHELIA STONE STONE . . . . . *English*  
M.A., Columbia University  
WILLIAM E. STONE . . . . . *History and Spanish*  
A.B., Harvard University  
ERNEST CRUIKSHANK . . . . . *Psychology and Current History*  
A.M., Washington College; Johns Hopkins University  
FRANCES RANNEY BOTTUM . . . . . *Science*  
B.S., Peabody College for Teachers  
MARY SEARLE . . . . . *Mathematics*  
B.S., Wellesley College  
GRACE EVANS ST. JOHN . . . . . *English*  
A.B., Barnard College  
ELIZABETH E. SHEARER . . . . . *French*  
A.B., Mt. Holyoke College; Columbia University  
LOULIE M. WILSON . . . . . *Latin*  
B.A., Sweet Briar College  
AGNES VIRGINIA CONE . . . . . *English*  
B.A., Goucher College  
MARGARET SCOFIELD CUMMINGS . . . . . *French*  
A.B., Radcliffe College  
FLORENCE C. DAVIS . . . . . *Elocution*  
B.O., Emerson College  
MARION STECK HESSE . . . . . *Physical Director*  
Graduate Posse Normal School, Boston



MISS SHEARER

MISS BOTTUM

MISS SEARLE

MR. STONE

MISS DAVIS

MISS CUMMINGS

MISS ST. JOHN

MISS CONE

MISS WILSON





MISS SOUTHWICK

MRS. KNOX

MISS FENNER

MISS ROBERTS

MISS HESSE

MISS SPOFFORD

MR. JONES

MISS FOX



Mrs. MARRIOTT

Miss BASON

Miss ALEXANDER

Miss BROOKS

Miss SUTTON

Miss GIDDENS

Miss TALBOT

Miss LEE

### *Music Department*

WILLIAM H. JONES, A.A.G.O., Director . . . . . *Piano, Organ, Voice, Theory*  
A.B., Trinity College; Berlin

SUE KYLE SOUTHWICK . . . . . *Piano, Theory*  
Graduate New England Conservatory

ELSIE A. FOX . . . . . *Piano, Theory*  
B.Mus., Syracuse University

EBIE ROBERTS . . . . . *Piano, Theory*  
Pupil of Brawley, Owen; Burroughs Method

MRS. ELIZA SMEDES KNOX . . . . . *Piano*  
Graduate St. Mary's; Berlin and Leipzig

MARGUERITE SPOFFORD . . . . . *Voice*  
Graduate New England Conservatory

### *Art Department*

CLARA I. FENNER . . . . . *Director*  
Graduate Maryland Institute; Pratt Institute; Paris

### *Expression Department*

FLORENCE C. DAVIS . . . . . *Director*  
B.O., Emerson College, Boston; Leland Powers Method

### *Business Department*

LIZZIE H. LEE . . . . . *Director*  
Isaac Pitman Shorthand

### *Home Economics Department*

ELIZABETH L. BASON . . . . . *Director*  
A.B., Flora MacDonald College; Teachers College; Columbia University

### *Officers, 1920-21*

REV. WARREN W. WAY . . . . . *Rector*

MRS. CHARLES E. PERKINS . . . . . *Lady Principal*

MISS KATE MCKIMMON . . . . . *Special Supervisor*

MISS KATIE L. GIDDENS . . . . . *Librarian*

MRS. NANNIE H. MARRIOTT . . . . . *Dictitian*

MISS FLORENCE W. TALBOT . . . . . *Housckeeper*

MISS ANNIE ALEXANDER, R.N. . . . . *Matron of the Infirmary*

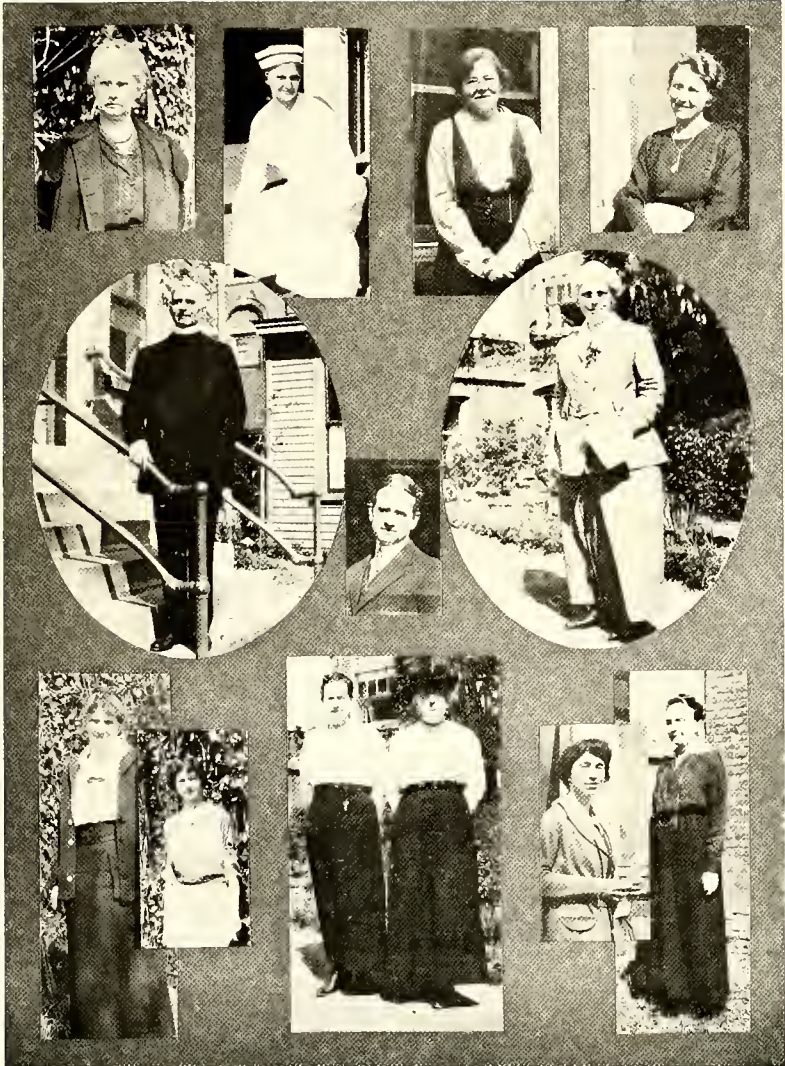
DR. A. W. KNOX . . . . . *School Physician*

ERNEST CRUIKSHANK . . . . . *Secretary and Business Manager*

MISS JULIET B. SUTTON . . . . . *Secretary to the Rector*

MISS CATHERINE P. BROOKS . . . . . *Office Secretary*





FACULTY "SNAPS"



### *The School Council*

The School Council was instituted by the Rector at the beginning of the session of 1919-20. It is made up of the Rector, the Lady Principal, three representatives of the Faculty and ten representatives of the students—four Seniors, three Juniors, two Sophomores and one Freshman.

Meetings are held as desired.

The membership of the Council in 1920-21 has been:

THE RECTOR, *Chairman*  
MISS MCKIMMON

MRS. PERKINS  
MISS DAVIS  
MR. STONE

MISS STONE  
MISS WILSON

DOROTHY KIRTLAND, '21, *Secretary*  
KATHERINE WADDELL, '21  
SUSAN COLLIER, '21  
FRANCES VENABLE, '21

MARGARET HUSKE, '22  
HENNIE LONG, '22  
MURIEL DOUGHERTY, '22

ENIMA VILLEPIGUE, '24

ELIZABETH THOMAS, '23  
MARY LOUISE EVERETT, '23





*Through the days of toil and pleasure  
Loving friendship, smiles and tears,  
Hope has been the word to guide us,  
"Aiming high" through four long years,  
We have climbed the rugged pathway,  
Ended now our hopes and fears.*

*Now the future like a beacon  
Beckons on to paths untried,  
Leaving school-girl days behind us,  
Where the oft-trod paths divide,  
Eyes still fastened on our lode star,  
Hope our motto, hope our guide.*

*Though with eager hearts we greet you,  
Future where new pathways lie,  
Still the love of Alma Mater,  
When it's time to say good-bye,  
Makes us linger now reluctant,  
Looking backward with a sigh.*

*K. M. W.*



# THE SENIORS



Colors: Purple and Lavender

Flower: Violet

Motto: Aim high, but reach higher

## Class Officers

DOROTHY KIRTLAND	President
SUSANNE PEGUES	Vice-President
KATHERINE WADDELL	Secretary
ELIZABETH CARRIGAN	Treasurer
FIELDING DOUTHAT	Prophet
KATHERINE WADDELL	Poet
FLORIDA KENT	Historian
SUSAN COLLIER	Testator

## Representatives on the School Council

DOROTHY KIRTLAND      FRANCES VENABLE      SUSAN COLLIER      KATHERINE WADDELL

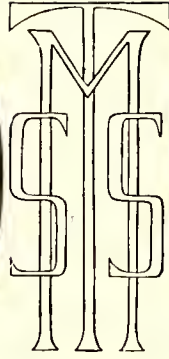
## Class Roll

ELIZABETH HILL CARRIGAN, Hendersonville  
 ELEANOR HOPE SWAIN COBB, Bay Head, Fla.  
 SUSAN MOORE COLLIER, Goldsboro  
 CHRISTINE MAY DEATON, Raleigh  
 FIELDING LEWIS DOUTHAT, Danville, Va.  
 REBECCA ELIZABETH HINES, Clinton

VIRGINIA LANIER JORDAN, Crescent City, Fla.  
 FLORIDA FREEMAN KENT, Georgetown, S. C.  
 DOROTHY KIRTLAND, St. Augustine, Fla.  
 MABEL ELIZABETH MERRITT, Raleigh  
 CAROLINE BREVARD MOORE, Charlotte

ANNA ELIZABETH NELSON, Florence, S. C.  
 MARY ELIZABETH NOLAN, Marietta, Ga.  
 SUSANNE PAYNE PEGUES, Greenville, S. C.  
 SARAH ELEANOR TIPLADY, Roanoke, Va.  
 FRANCES PRESTON VENABLE, Chapel Hill  
 KATHERINE MASON WADDELL, Manchester

Class Adviser: MR. WAY



ELIZABETH HILL CARRIGAN  
Hendersonville, N. C.  
(1920-21)

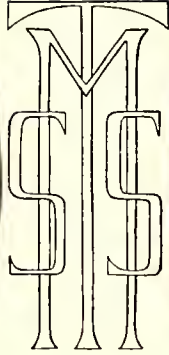
President Sigma Lambda, 1921.  
Class Treasurer, 1921.  
President St. Monica's Chapter, 1921.  
Chapel Warden, 1921.  
"Best Leader," 1921.  
MUSE Club, 1920-21.

ELEANOR HOPE SWAIN COBB  
Bay Head, Florida  
(1921)

MUSE Club, 1921.

*"Persuasive speech and more persuasive sighs,  
Silence that spoke and eloquence of eyes."*

*"Ambition has no rest."*



SUSAN MOORE COLLIER  
Goldsboro, N. C.  
(1919-20-21)

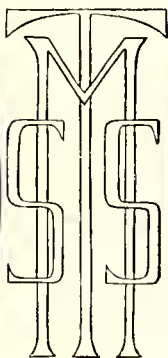
CHRISTINE MAY DEATON  
Raleigh, N. C.  
(1920-21)

Junior Auxiliary Council, 1919-20.  
Blue Ridge Delegate, 1919-20.  
Class Secretary, 1920.  
Student Council, 1920-21.  
President St. Elizabeth's Chapter,  
1921.  
Vice-Chairman Junior Auxiliary, 1920.  
Annual MUSE Board, 1921.  
Business Manager MUSE, 1921.  
MUSE Club, 1920-21.

*"Who mixed reason with pleasure and  
wisdom with mirth."*

*"On their own merits modest men are  
dumb."*





FIELDING LEWIS DOUTHAT  
Danville, Virginia  
(1920-21)

REBECCA ELIZABETH HINES  
Clinton, N. C.  
(1920-21)

Class Treasurer, 1920.  
Commencement Play, 1920-21.  
Treasurer Sigma Lambda, 1921.  
Secretary St. Agnes' Chapter, 1921.  
President Dramatic Club, 1921.  
Class Prophet, 1921.  
"Santa Claus," 1921.  
"Most Attractive," 1921.  
MUSE Club, 1921.

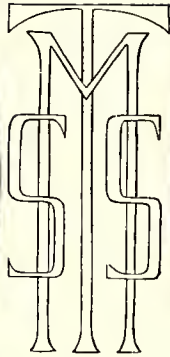
Treasurer E A II, 1921.  
Vice-President St. Anne's Chapter.  
Annual MUSE Board, 1921.  
MUSE Club, 1921.

*"Why should she study and make  
herself sad?"*

*"And still the wonder grew that one  
small head could carry all she  
knew."*



VIRGINIA LANIER JORDAN  
Crescent City, Florida  
(1919-20-21)



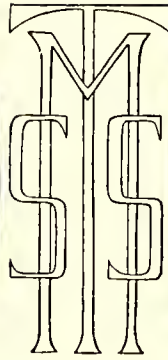
FLORIDA FREEMAN KENT  
Georgetown, S. C.  
(1919-20-21)

Muse Club, 1921.

Blue Ridge Delegate, 1920.  
President Altar Guild, 1921.  
President St. Anne's Chapter, 1921.  
Manager Mu Basketball, 1921.  
Captain First team Mu, 1921.  
Mu Basket Ball, 1920-21.  
Class Historian, 1921.  
Vice-Chairman Junior Auxiliary, 1921.  
Annual Muse Board, 1921.  
Monthly Muse Board, 1921.  
Muse Club, 1920-21.

*"I must be measured by my soul."*

*"Of me you may write in the blackest  
of ink—I say what I mean and I  
know what I think."*



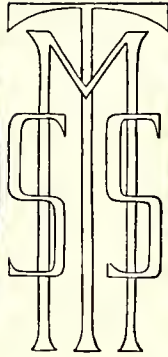
DOROTHY KIRTLAND  
St. Augustine, Florida  
(1918-19-20-21)

MABEL ELIZABETH MERRITT  
Raleigh, N. C.  
(1920-21)

Class President, 1919-20-21.  
Commencement Marshal, 1919-20.  
Secretary E A II, 1920.  
President St. Monica's, 1920.  
Commencement Play, 1918-19-20-21.  
School Council, 1920-21.  
Secretary School Council, 1921.  
Business Manager Dramatic Club,  
1921.  
President Sketch Club, 1921.  
Vice-President E A II, 1921.  
Annual MUSE Board, 1920-21.  
"Most Influential," 1921.  
MUSE Club, 1919-20-21.

*"I'm sure care is an enemy to life."*

*"Sober, quiet, pensive and demure.  
One of those friends of whom you  
are always sure."*



CAROLINA BREVARD MOORE  
Charlotte, N. C.  
(1918-19-20-21)

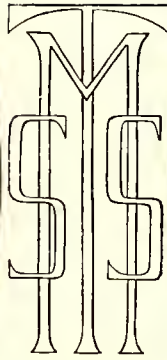
ANNE ELIZABETH NELSON  
Florence, S. C.  
(1920-21)

Commencement Marshal, 1920.  
Class Secretary-Treasurer, 1920.  
Vice-President Sigma Lambda, 1921.  
Secretary Lucy Bratton Chapter, 1921.  
Chapel Librarian, 1921.  
Secretary Muse Club, 1921.  
Muse Club, 1920-21.

Secretary Sigma Lambda, 1921.  
Secretary-Treasurer Mu, 1921.  
President Kate McKimmon Chapter,  
1921.  
MUSE Club, 1921.

*"Her heart is not in her work—'Tis  
elsewhere."*

*"She cometh unto you with a tale,  
which holdeth children from play  
and old men from the chimney  
corner."*



MARY ELIZABETH NOLAN  
Marietta, Georgia  
(1919-20-21)

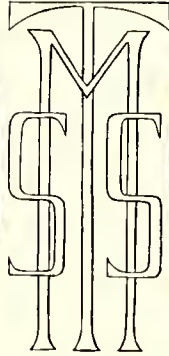
Junior Auxiliary Council, 1920.  
Commencement Marshal, 1920.  
President St. Catharine's Chapter,  
1921.  
President E A H, 1921.  
Chapel Warden, 1921.  
Treasurer Altar Guild, 1921.  
"Most Courteous," 1921.  
MUSE Club, 1920-21.

SUSANNE PAYNE PEGUES  
Greenville, S. C.  
(1920-21)

Junior Auxiliary Council, 1920.  
Vice-President Class, 1921.  
Vice-President Sigma Lambda, 1921.  
Secretary-Treasurer Sigma, 1921.  
Chapel Librarian, 1921.  
MUSE Club, 1920-21.

*"Life is not so short but that there is  
always time for courtesy."*

*"Not too serious, not too gay, but a  
rare good fellow when it comes to  
play."*



SARAH ELEANOR TIPLADY  
Roanoke, Virginia  
(1920-21)

FRANCES PRESTON VENABLE  
Chapel Hill, N. C.

MUSE Club, 1921.

President Class, 1919-20.  
President St. Elizabeth's Chapter,  
1920.  
Chief Commencement Marshal, 1920.  
Blue Ridge Delegate, 1920.  
Chairman of the Muse, 1921.  
School Council, 1921.  
Commencement Play, 1921.  
Vice-President Altar Guild, 1921.  
Chapel Warden, 1921.  
President Granddaughters, 1921.  
Captain Mu Tennis, 1920-21.  
Mu Basketball, 1921.  
"Best Allround," 1921.  
MUSE Club, 1920-21.

*"Give the world the best you have and  
the best will come back to you."*

*"She is pretty to walk with, witty to  
talk with, and pleasant to think  
on."*



KATHERINE MASON WADDELL  
Manchester, N. C.  
(1918-19-20-21)

Commencement Marshal, 1920.  
Vice-President Class, 1920.  
Annual MUSE Board, 1920-21.  
President St. Margaret's Chapter,  
1921.  
Class Poet, 1921.  
Treasurer Sketch Club, 1921.  
School Council, 1921.  
Sigma Lambda Editor MUSE, 1921.  
Secretary Class, 1921.  
School Cheer Leader, 1921.  
Chapel Warden, 1921.  
MUSE Club, 1920-21.

*"Give her of the fruits of her hands  
and let her own works praise her."*

### *A Senior Song*

*We're Seniors, yes, Seniors,  
But we were not always so;  
For it is just a year  
Since we've been Seniors here,  
We were "Preps" not long ago!  
We never tired  
But still aspired  
To all a Senior ought to know,  
And whether Fresh or Prep  
We kept in step  
As from class to class we'd go;  
And when we think of then  
We wish again  
That back to Prepdom we could go!*

*As Soph'mores, wise Soph'mores,  
We were full of fun and glee;  
But then the year soon passed,  
Juniors we were at last,  
We had to work continually,  
But now we're Seniors,  
Yes, Seniors,  
And soon Alumnae we will be,  
But when school work is done,  
Life's work begun,  
There'll be a happy memory;  
And whether here or there  
Or anywhere,  
We'll owe our all, dear School, to  
thee!*

(Written by HELEN BATTLE for the Class of 1919)



## *Good-bye, School, We're Through*

*(A Song of Graduation Day.)*

*(After "Good-bye, Girls," from "Chin Chin.")*

We're the happiest girls in all the realm of schooldom,  
We feel as though we'd triumphed over fate,  
We've reached a goal we've ever sought,  
A day of which we've ever thought,  
That wondrous day on which we graduate.  
Of course we've not had only sun and flowers,  
But storms and clouds have braced us in the line,  
Like every other girl we've wasted hours,  
But now all's done—the future looks benign.  
And yet we say with heartfelt sigh  
For the happy days of the years gone by:

Good-bye, School, we're through,  
Dear School, where we have met,  
We say good-bye to you  
With very real regret,  
Our day of jubilation  
Is full of fascination,  
But we'll e'er to you be true;  
Good-bye, School,  
Good-bye, School, we're through.

We've often read in poems and romances  
That some day in some way, if we but wait,  
The thing we seek both far and wide—  
The thing for which we've ever sighed—  
Will come to us—'tis so decreed by fate.  
And so it's all come true as in a story,  
Commencement morning with its golden sun  
Has risen upon our sight in all its glory,  
For us there'll never be such other one.  
And yet we say with heartfelt sigh  
For the happy days of the years gone by:

Good-bye, School, we're through, etc.

*E. C., 1915.*



#### ELIZABETH CARRIGAN

"Liz" is the best-looking girl in our class and we are exceedingly proud of her when she appears, which is not infrequently, ready to go down town wearing that fur coat and "gold" hat. Liz can preside with commendable dignity over a Sigma Lambda meeting, but secretly, we believe she is also interested in a certain K. A., whose pin we've observed adorning the front of her dress.

"Liz" is in her element when dancing in the parlor; she got it for the "Best Leader," you know. And that's not all; it is said that she has dramatic aspirations, perhaps it is association with Fielding, at any rate, she took part in the Senior play and on Stunt Night, as Mrs. Katzenjammer, she called forth loud and continued applause.



#### ELEANOR HOPE COBB

Eleanor is certainly ambitious. We wish that we *all* had that unbounded interest and conscientiousness in regard to our work. We can't help but feel a great warmth of admiration for a girl who would give up her spring holiday to stay at school and make up some forgotten history points so she could get her "dip" in the spring. Yet her ambition never engrosses her to the extent that she isn't "right there with the goods" when the Seniors want to get up a stunt or when anybody wants to make any fudge or anything. She's just a fine, all-round good fellow and a girl that we admire as well as love.



### SUSAN COLLIER

Even if Susan is one of our smallest members, still it's heart that counts, and there is no room for doubt that Susan's heart is in the right place. The rest of us stand rather in awe of that level business head and practicability that have made her career as Business Manager of the MUSE such a success. Our awe takes wings, however, when in the sacred walls of Senior Hall, S. Collier makes merry with the gayest of us.

It's a good thing to know the right time for foolishness or for sobriety, and if Susan takes whatever career she may choose as seriously as she does MUSE dues and felt goods we're sure success will be her reward.

### MAY DEATON

May is one of the two day pupil Seniors of which the class well might boast, for Fate was indeed kind to send May and Mabel both to be members of the Class of '21. May is always ready to help out when we Seniors come before the limelight in our sudden flights in the "Dramatic" world and she cheerfully comes up to the school for rehearsals at all kinds of hours. Also, May has quite an aptness for books and does much to raise the "scholastic standard" of the Senior Class.

### FIELDING DOUTHAT

The Senior Class is justly proud of having the "most attractive" girl in school among its members, for that's what Fielding is. Of course we deplore the fact that she and "Liz" have worn out so many pairs of shoes "tripping the light fantastic" a la ville, but we are sure that it's youth and exuberance that are to blame—nothing more! As she herself says there will be time enough to become staid and resign oneself to wearing one suit for seven years! We might make an attempt to explain why Fielding got it for the "most attractive" but—listen to that contagious laugh! "Nuff" said!





### REBECCA HINES

Rebecca is one of our star students, in fact it seems that number 27 Senior Hall is well furnished with brains. She is a splendid worker, the kind that can be depended upon in an emergency. Although she doesn't play basket-ball or volley ball, still it is Rebecca's alarm clock that wakes up Senior Hall at an early hour and reminds us that she will soon be off to the tennis court!

Rebecca is blessed with a determination that will surely aid her in carrying out any thing she sets her mind on doing, and we are for her!



### VIRGINIA JORDAN

Virginia has the distinction of being the smallest girl in school as well as in her class, and yet, though diminutive in size, she plays a large part in our life in Senior Hall. Virginia is ambitious in her studies and goes about her studying with a thoroughness that makes her note-books, outside reading and recitations always up to date. But she does not study all the time. Oh, no! For every now and then she finds time to "socialize" a bit in the neighborhood of a certain member of the faculty. Ah, Virginia!



### FLORIDA KENT

"Hit 'em high, hit 'em low,  
Mu Team, let's go!"  
and nobody fights harder than Florida! We simply couldn't imagine the Mus getting along without their agile captain. The way she plays basketball is characteristic of the way Florida does everything. She goes at it with a vim whether it be an argument—she is most emphatic in manner and never seems at loss for a word—or studying Vergil and making the honor roll every month. We have brains in the Class you see! However, we have seen her in less serious aspects, for instance nobody could ever forget her as the Turkey in the Christmas play, or as the famous Hawkshaw on Stunt Night.



### DOROTHY KIRTLAND

There's nobody in the world just like "Pussy," and to define her would take more skill than we possess. However, making a vain attempt, we might describe her thus: Not too serious—oh never, not too gay—hardly ever! Original—very, and with it all, the right amount of cleverness to "get away" with never studying History D.

Nobody has "Pussy's" ability of presiding over student meetings, witness the fact that she got it almost unanimously for the "most influential," and nobody can take a character part in one of Miss Davis' plays as well as "Pussy." She's a peach of a Senior president and we'd be lost without her—Ask any Senior!

### MABEL MERRITT

Mabel is the studious member of our class and upon her rests the responsibility of proving false the accusation that we Seniors lack ability "to shine" in classes. It is to "Miss Merritt" that Mr. Way gives a knotty problem in Philosophy to solve after others have tried in vain, and she never fails to "elucidate" most correctly. But Mabel is not all "books," behind her quiet, reserved manner there lies a character and a personality that make her a girl one would be proud to call a friend.

### CAROLINE MOORE

Caroline is little and pretty and adorable. She is the bright particular star of the Senior Class in Domestic Art. We are inclined to wonder about her sudden great interest in all things domestic when we recall that this time last year the topic of conversation with Caroline was visiting "Libby," Charleston, the Citadel and Columbia! And there is just nobody in school who can wear perky little curls so well and look so lovely as Caroline. Her numerous crushes are a sure evidence of her own peculiar charm. And as for dancing she's right there with the best of 'em.





#### ELIZABETH NELSON

Seven thirty-five A.M. and "Nelson" is rounding the corner of East Wing, running as if pursued by demons. Nobody else is in sight, even the last stragglers have disappeared into the doors of Clement Hall, but, as usual, she makes it. This is typical of "Nelson." At classes she always arrives breathless at the last minute, but after getting there she can expatiate and expound as well as anybody, often knowing exactly what the book says, but more often drawing on that vivid imagination of hers.

Nelson has a ready tongue, and what is better still, a ready heart to work for the Senior Class, and here's to her!



#### ELIZABETH NOLAN

Elizabeth makes such a good E. A. P. president that we are often inclined to think of her in that connection, but Literary Society meetings are not the only occasion when she shows ability to take an active part. The Mus certainly have no more loyal supporter, whether she is cheering them from the side-lines or is in the thick of the fight.

Elizabeth has the distinction of being one of the few Seniors who can carry a tune—indeed she sings a musical soprano—that same soprano played no small part in the Senior Christmas play when Elizabeth played the part of the Christmas Doll. We don't know exactly which one of these accomplishments has made Elsie remain so faithful but we have a keen suspicion that it is just Elizabeth herself.



#### SUSANNE PEGUES

We wish there were more girls like "Sussy!" Of course we know it will turn her head, but we can't refrain from mentioning that "Sussy" is so much fun till we'd hate to think what Senior Hall would be without her. We can't claim she is our best student—she has rivals—but she surely has the knack of preparing her lessons before her less fortunate classmates have even found the place! If it's pep you are looking for, Susanne has "got the goods," and if you want an example of aforesaid pep, just peep into the gym when a game is in progress and see "Sussy" urging the Sigmas on to "glory and fame!" You guessed it, she's one of their cheer leaders.



### ELEANOR TIPLADY

"Tip," the official mail carrier of Senior Hall! Promptly every morning at six o'clock she descends the stairs and goes to the Postoffice. On her return she is met with anxious inquiries and she distributes her load consoling the unlucky and rejoicing with the fortunate. This is just a sample of her willingness to do odd jobs for others. It is not generally known that during both her years here "Tiplady" has been the artist whose labor is reflected in the shining brass in the chapel. Music, however, is Eleanor's special line, and we wish her the best of success in her chosen work.



### FRANCES VENABLE

Ready for fun when mischief is afoot, willing to work when duty calls her away from pleasure—that's "Hunk." Her interests in all student affairs has made her worthy the title "Best all-round" for she's the kind you'd always find in the midst of everything from helping with the "Little Store" to presiding over MUSE Club meetings. Although "Hunk" is our youngest member, we envy her that dignified air that we fain would acquire to give us a more Seniorly appearance. Oh, yes! we musn't neglect to mention her ability to acquire a crush with all accompanying flowers, candy, etc.



### KATHERINE WADDELL

Katherine is a rare combination of talent and loveliness that is mighty hard to beat. With the most innocent expression in the world, Katherine will start one of the "wild rumors" which constantly circulate the school, that some respected members of the faculty have bobbed their hair, etc. Pardonable indeed was the desire of the Quotation Committee to put the quotation under Katherine's picture—it was afterwards voted to Nelson: "She cometh unto you with a tale which holdeth children from play and old men from the chimney corners!" But we readily forgive Katherine for so misusing our credibility for secretly, we are immensely proud of this classmate of ours. Possessing literary talent of a high degree, it is Katherine who is called upon to write poetry, short stories, jingles, and plays on all occasions, with equal success each time. Witness the Seniors' Christmas Play and the Sigma Lambda Muses.





THE JUNIOR CLASS

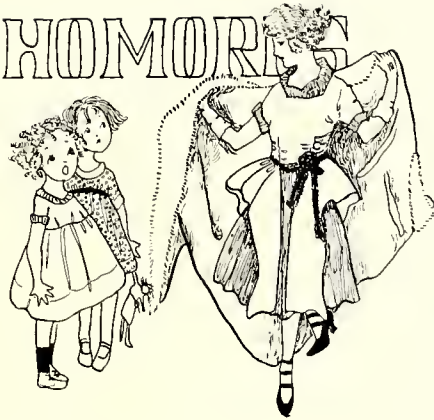






THE SOPHOMORE CLASS

# THE SOPHOMORE



## The Class of 1923

Colors: Scarlet and Gray

Flower: Scarlet Poppy

Motto: He who conquers, conquers himself

### Class Officers

DOROTHY BAUM . . . . .	President
MARY LOUISE EVERETT . . . . .	Vice-President
HELEN BUDGE . . . . .	Secretary
ELIZABETH TUCKER . . . . .	Treasurer

### Representatives on the School Council

MARY LOUISE EVERETT

ELIZABETH THOMAS

### Class Roll

ASHWORTH, J. W.  
BALLOU, E.  
BARBER, H.  
BAUM, D.  
BROWN, B.  
BUDGE, H.  
BUICE, L.  
CHESSON, E.  
CLINE, F.  
CLINE, H.  
DELAMAR, H.  
DEMPSEY, L.  
EGLESTON, L.  
ELLIOT, M.  
EVERETT, M. L.  
FORBES, J.  
FRANKLIN, M. P.  
GIDDENS, S.  
GILCHRIST, M.  
GLASS, E. L.  
GRANTHAM, E.

GREGG, L.  
HARDING, M.  
HART, E.  
HILL, P.  
HINES, L.  
HUGHES, A.  
HUSKE, A.  
HUTSON, E.  
JOYNER, L.  
KELLER, S.  
LANDIS, H.  
LANGLEY, M. L.  
LAWRENCE, E.  
LENOIR, H.  
MARKS, J.  
NIXON, D.  
NIXON, M.  
NORMAN, J.  
OWEN, A.  
PARKER, B.

ROBERSON, H.  
SMITH, L.  
STANTON, L.  
STEPHENSON, M.  
ROSE, J.  
SIMMONS, D.  
SKINNER, J.  
SWETT, D.  
THACKER, E.  
THOMAS, E.  
THOMPSON, M.  
TRENLER, E.  
TUCKER, E.  
TURRENTINE, H.  
VOSE, J.  
WASHBURN, M.  
WAY, E.  
WHEELWRIGHT, S.  
WILKINS, V.  
WILLARD, M.  
YOUNG, H.

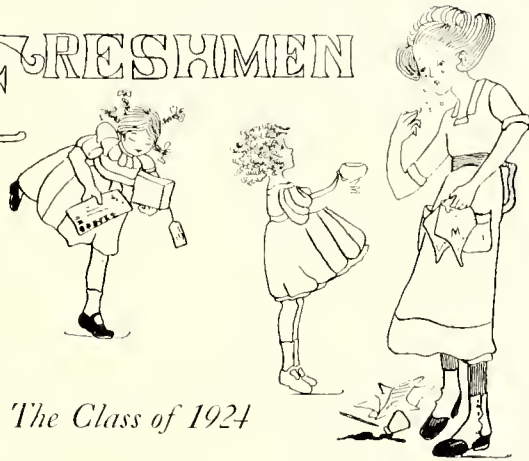
Class Adviser: Miss SUTTON



THE FRESHMAN CLASS



# THE FRESHMEN



*The Class of 1924*

Colors: Green and White

Flower: Marechal Neil Rose

Motto: Ever Onward, Ever Upward

## Class Officers

MATHIDA LAMB	President
MARY AMBLER	Vice-President
MARY JOSEY	Secretary
EMMA VILLEPIGUE	Treasurer

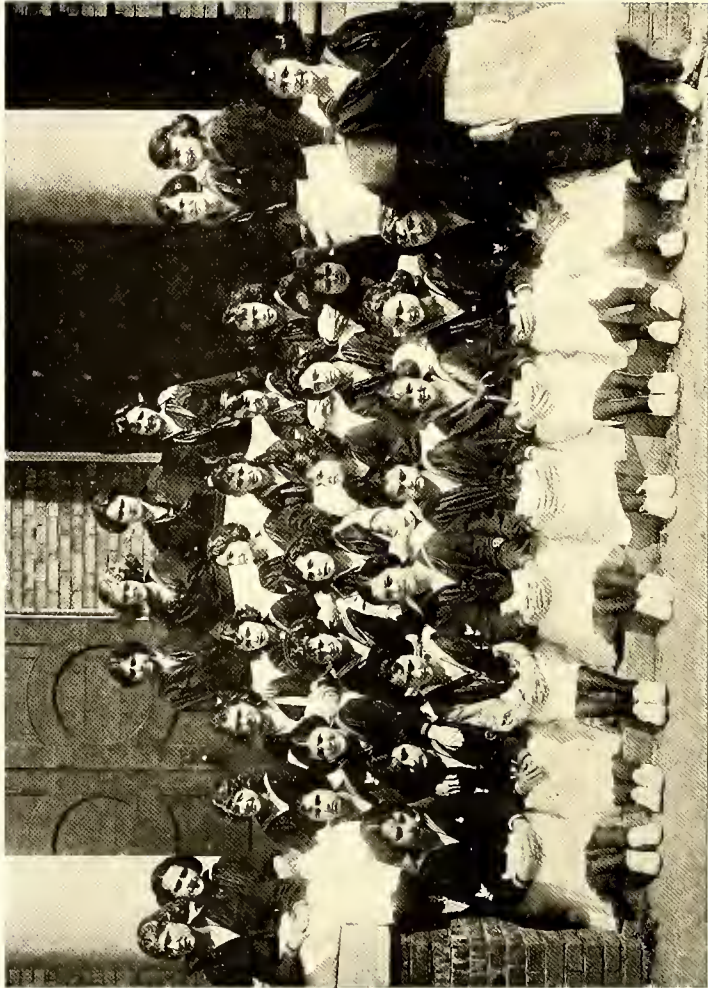
## Representative on the School Council

EMMA VILLEPIGUE

## Class Roll

ADAMS, M.	COBBS, D.	JORDAN, A.	SPENCE, C.
AMBLER, M.	COOPER, D.	JOSEY, M.	SPOON, M. L.
ANTHONY, E.	COX, A.	KIRBY-SMITH, C.	STANTON, L.
BALLARD, E.	CRUIKSHANK, A.	KIRTLAND, A.	STEARNS, E.
BARBOUR, G.	DEANS, V.	KNOX, A. L.	STORR, V.
BARTON, E.	DONNAHOE, B.	KOONCF, G.	TAYLOR, D.
BATTLE, E.	EGLSTON, S.	LAMB, M.	TAYLOR, S.
BEST, M.	FAULKNER, M.	LEWIS, E.	THIGPEN, V.
BLAKELY, M.	FITCHETT, S.	LEWIS, M.	TURNER, J.
BONNER, B.	FLINT, E.	LUPFER, L.	VILLEPIGUE, E.
BOYD, L.	FREEMAN, N.	MOORE, R.	WEBB, H.
BOYKIN, F.	GAITHER, L.	MCALLISTER, K.	WELLS, M.
BOYKIN, H.	GRABER, D.	O'DONNELL, K.	WILKINS, M.
BOYLSTON, A.	GRESHAM, M.	POOLE, E.	WISE, M.
BRATTON, E.	HAIRSTON, L.	POWELL, M.	WOOD, D.
BRITT, V.	HARRISON, V.	OLDHAM, R.	WOOD, M.
BROWNE, G.	HEATH, E. C.	PERKINS, A.	WRIGHT, S.
BROWN, I.	HIGGS, H.	PHILIPS, A.	WITHERS, M.
BROWN, M.	HOLMES, D.	PHILIPS, S.	WYNNE, N.
CHEEK, E.	HOSKINSON, F.	ROBERTS, E.	YARBOROUGH, M. E.
COBB, W.	HUTCHINSON, S.	SCALES, A.	

Class Adviser: MR. CRUIKSHANK



PREPARATORY CLASS



*The Preparatory Department*

Colors: Pink and Blue

Flower: Sweet Pea

Motto: Children should be seen and not heard

*Class Officers*

MABEL HAWKINS	.....	President
ALICE WALKER	.....	Vice-President
MARY AUSLEY	.....	Secretary-Treasurer

*Class Roll*

AMBLER, B.	HOPKINS, V.	RUSS, J.
AUSLEY, M.	JAMES, C.	SABISTON, E.
BAILEY,	JESSUP, S.	SABISTON, S.
BACHELOR, M.	JOHNSTON, N.	SALLEY, F.
BRUNSON, A.	JOHNSTON, W.	SILER, M.
BURGWYN, E.	JONAS, E.	TAFT, M.
CABELL, E.	JORDAN, F.	TATEM, H.
CARR, M.	LANGSTON, K.	THOMAS, A. B.
CHEATHAM, A.	LEE, M.	TRIPP, M.
CHEATHAM, E.	LEWIS, K.	TUCKER, M.
COLLIER, E.	LILLY, H.	WADDELL, M.
DARST, M.	MANNING, A. L.	WADDELL, W.
DREW, M.	McCOY, M.	WALKER, A.
DUNLAP, H.	MacDONALD, J.	WALTERS, F.
ECCLES, H.	McDOWELL, R.	WEBB, F.
FAULKNER, K.	NELSON, M.	WEYMOUTH, V.
FITTS, L.	NEWBERRY, H.	WHITAKER, M.
GOULD, J.	NELSON, C.	WILLIAMS, F.
GREEN, F.	POWELL, H.	WILSON, A.
HAWKINS, M.	REINHART, F.	WILSON, V.
HENKEL, L.	RICHARDS, K.	WRIGHT, A. L.
HENKFL, V.	ROBBINS, R.	WOOD, R.
HESTER, S.	ROBERSON, C.	YATES, E.

Class Adviser: MR. STONE







L. JOSEY  
F. DOUTHAT

B. PARKER  
E. HUTSON  
C. MOORE

H. BUDGE  
M. DOUGHERTY



*Candidates for Certificates*

*In Piano*

EDITH HUTSON . . . . . St. Augustine, Fla.

*In Expression*

FIELDING DOUTHAT . . . . . Danville, Va.

*In Home Economics*

HELEN BUDGE . . . . . Miami, Fla.

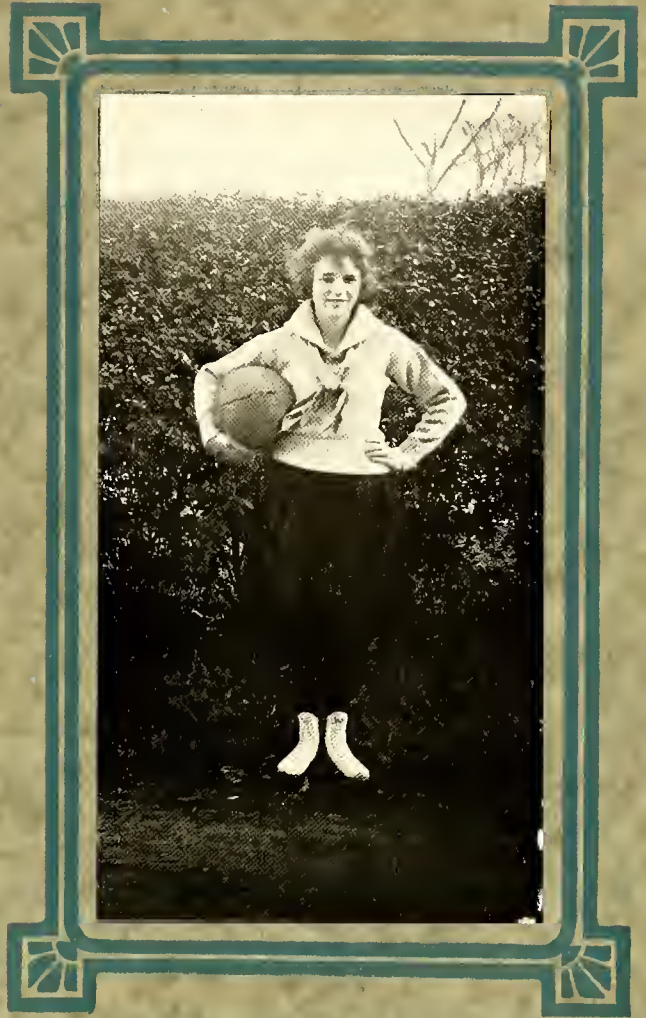
MURIEL DOUGHERTY . . . . . Washington, D. C.

LOUISE JOSEY . . . . . Scotland Neck, N. C.

BEATRICE PARKER . . . . . Elm City, N. C.

CAROLINE MOORE . . . . . Charlotte, N. C.





## Organizations





*Chapel Officers 1920-21*

*Wardens*

KATHERINE WADDELL  
ELIZABETH CARRIGAN

ELIZABETH NOLAN  
FRANCES VENABLE

*Librarians*

SUSANNE PEGUES

CARLINE MOORE

# Church School Service League 1920-1921

General Directress—MISS MCKIMMON

## The Council

ELIZABETH THOMAS, *Chairman*

AND

*The Chapter Presidents ex-officio*

## The Chapter Officers

### *St. Anne's Chapter*

FLORIDA KENT . . . . . *President*  
 REBECCA HINES . . . . . *Vice-President*  
 EVALINA BECKWITH . . . . . *Secretary-Treasurer*  
 MISS SPOFFORD . . . . . *Adviser*

### *St. Elizabeth's Chapter*

SUSAN COLLIER  
 FRANCES VENABLE  
 EMMA VILLEPIGUE

### *St. Margaret's Chapter*

ELIZABETH CARRIGAN . . . . . *President*  
 MAJGE BLAKELEY . . . . . *Secretary-Treasurer*

### *Kate McKimmon Chapter*

DOROTHY BAUM  
 FIELDING DOUTHAT

### *St. Margaret's Chapter*

KATHERINE WADDELL . . . . . *President*  
 ELISE BALLARD . . . . . *Secretary*  
 MABEL HAWKINS . . . . . *Treasurer*

### *Kate McKimmon Chapter*

ELIZABETH NELSON  
 LOUISE EGLESTON  
 MARIETTA GAREISSEN

### *Lucy Bratton Chapter*

MARGARET HUSKE . . . . . *President*  
 CAROLINE MOORE . . . . . *Secretary-Treasurer*  
 MISS SUTTON . . . . . *Adviser*

### *St. Catherine's Chapter*

ELIZABETH NOLAN  
 EMILY HART





### *The Altar Guild*

MISS KATE MCKIMMON . . . . . *Director*  
 FLORIDA KENT . . . . . *President*  
 FRANCES VENABLE . . . . . *Vice-President*  
 ELIZABETH NOLAN . . . . . *Secretary-Treasurer*

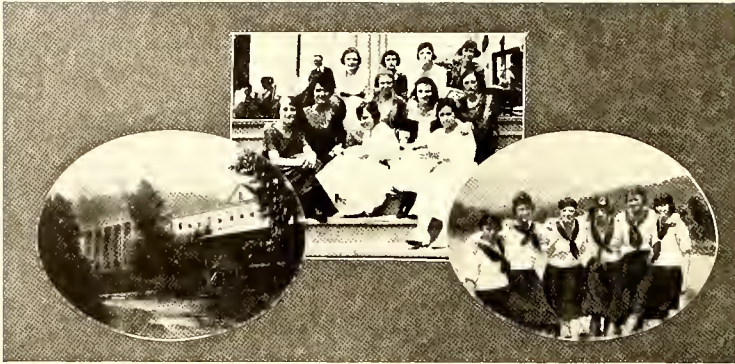
AMBLER, M.  
 ASHWORTH  
 BAUM  
 BECKWITH  
 BROWN, B.  
 BUDGE  
 CARRIGAN  
 CAVE  
 CHESON  
 COBB, E.  
 COLLIER, S.  
 COOPER  
 DOUGHERTY  
 DOUTHAT  
 EGLESTON, S.  
 ELLIOTT  
 EVERETT  
 FORBES

GAITHER  
 GARIESSEN  
 GLASS  
 GRANTHAM  
 GREGG  
 HAIRSTON  
 HARDING  
 HARRISON  
 HART  
 HINES, L.  
 HUGHES  
 HUSKE, A.  
 HUSKE, M.  
 HUTCHINSON  
 JORDAN, V.  
 JOSEY  
 KENT  
 KIRTLAND, A.

KIRTLAND, D.  
 LAMB  
 LANDIS  
 LONG  
 MARKS  
 MOORE, C.  
 NIXON, D.  
 NIXON, M.  
 NOLAN  
 NORFLEET  
 OWEN  
 PARKER  
 PEGUES  
 PHILIPS  
 POWELL, L.  
 ROBERTS  
 ROSE  
 SIMMONS

SKINNER  
 SMITH  
 STANTON  
 STERN  
 SWETT  
 THOMAS  
 TIPLADY, C.  
 TIPLADY, E.  
 TREXLER  
 TUCKER  
 TURRENTINE  
 VENABLE  
 VILLEFIGUE  
 WAY  
 WHEELRIGHT  
 WILKIND, V.  
 WILLARD  
 YARBOROUGH





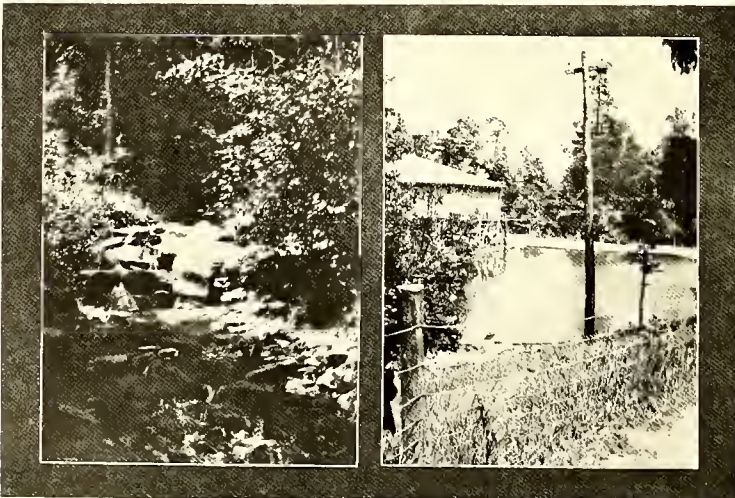
## *Blue Ridge*

What a world of inspiration, of fresh outlook and new hopes, do we get from our ten days at Blue Ridge; Blue Ridge, that home of good fellowship and brotherliness, set far back, as it is, in the purplish haze of the mountains of Western North Carolina. There is something rejuvenating in the very aspect of these majestic hills—not, of course, that St. Mary's delegates have any especial need for rejuvenation. But they have need for the many other things that Blue Ridge gives them; the gifts that they can never hope to repay, no matter how great their gratitude. Blue Ridge gives them the gift of an open-hearted sympathy for all the Christian religions of the world, a tender pity for all heathen ones; the gift of a full realization of the power of honest prayer, and real work in the interests of others; the gift of a belief in the wonder-working success of fair minded play. Oh, we owe much to Blue Ridge! In return we may only hope to offer it our sincere love, a love that carries with it a definite desire to impart, in our best, though humble way, some of its wonderful, indefinable spirit to those not fortunate enough to go themselves.

LENORE POWELL.

### *Delegates to the Convention, 1920*

JULIA WINSTON ASHWORTH	LOUISE EGLFSTON	ADDIE HUSKE	EMMA VILLEPIGUE
CARROLL CAVE	MABEL NORFLEET	FLORIDA KENT	FRANCES VENABLE
SUSAN COLLIER	LENORE POWELL	LENA SIMMONS	





# LITERARY SOCIETIES

## *The Society Contests*

Sigma Lambda first model meeting, November 16—"Indians."

Epsilon Alpha Pi first model meeting, November 18—"Gypsies."

Decided unanimously in favor of Epsilon Alpha Pi.

Monthly MUSE:

Thanksgiving Number—Epsilon Alpha Pi.

Christmas Number—Sigma Lambda.

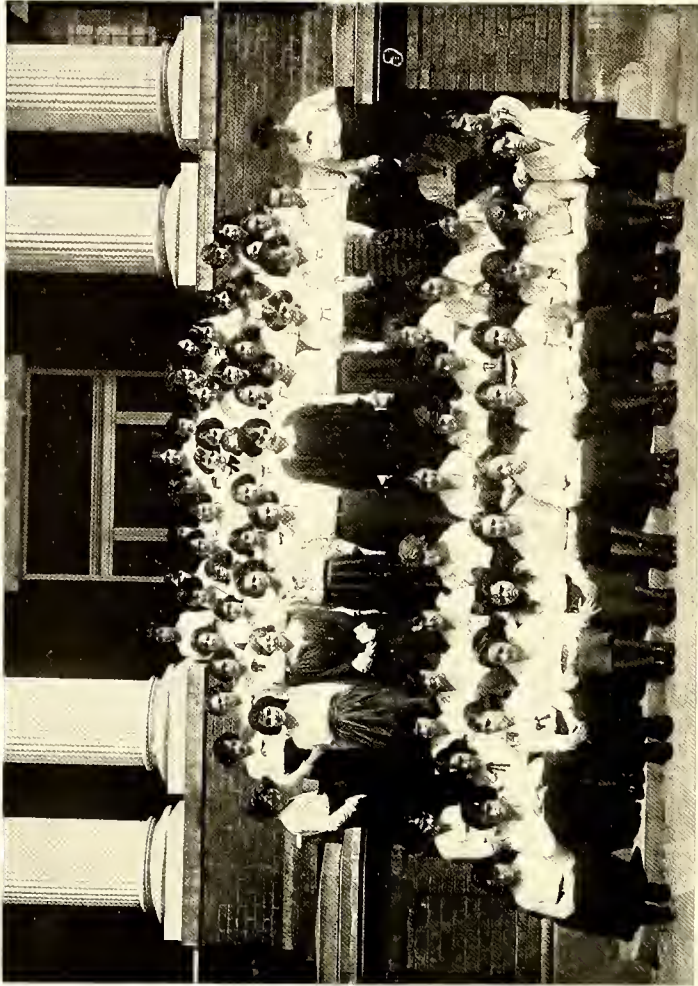
Decided two to one in favor of Sigma Lambda.

Epsilon Alpha Pi second model meeting, April 26—"The Old South."

Sigma Lambda second model meeting, April 28—"The Poets of the World War."

Decided two to one in favor of Sigma Lambda.

Society winning for the year: Sigma Lambda.



THE SIGMA LAMBDA LITERARY SOCIETY

# Sigma Lambda Literary Society

Founded 1900

Colors: Purple and Gray

Flower: Yellow Jessamine

Motto: Lit with the Sun

## Officers

ELIZABETH CARRIGAN	President
CAROLINE MOORE	First Vice President
SUSANNE PEGUES	Second Vice President
ELIZABETH NELSON	Secretary
FIELDING DOUTHAT	Treasurer

## Literary Editors

KATHERINE WADDELL, '21, Editor-in-Chief

FLORIDA KENT, '21, Assistant

## Inter-Society Debaters

MARIETTA GAREISSEN, '22

MARY LOUISE EVERETT, '23

## Commencement Marshals

MARY LOUISE EVERETT, '23

JULIA WINSTON ASHWORTH, '23

## Honorary Members

MISS CUMMINGS

MISS FOX

MISS GIDDENS

MISS ST. JOHN

MISS DAVIS

MISS FENNER

MISS HESSE

MR. STONE

MISS WILSON

MISS SUTTON

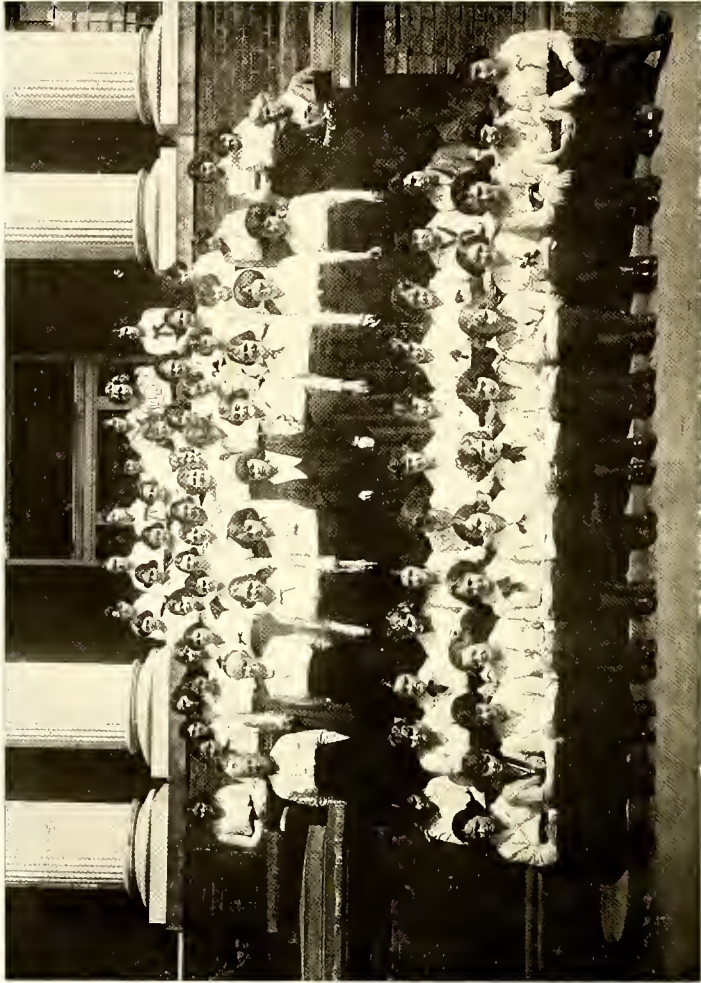
## Active Members

ASHWORTH  
AMBLER, B.  
AMBLER, M.  
AUSLEY  
BALLARD  
BARBOUR  
BATTLE  
BAUM  
BEST  
BLAKELY  
BOYKIN, F.  
BOYKIN, H.  
BROWN, B.  
BROWN, G.  
BUDGE  
BUICE  
BURGWYN  
CARR  
CARRIGAN  
CHANDLER  
CHEATHAM, A.  
CHEATHAM, E.  
COBB  
COLLIER, S.  
DEMPSEY  
DONNAHOE  
DOUGHERTY  
DOUTHAT  
DUNLAP  
EAGLES, R.  
EAGLES, M.

EDWARDS  
ELLIOTT  
EVERETT  
FAULKNER, K.  
FAULKNER, M.  
FITTS  
GAREISSEN  
GLASS  
GIDDENS  
GILCHRIST  
GOULD  
GRESHAM  
HEATH  
HENKEL, L.  
HENKEL, V.  
HOLMES  
HUGHES  
HUSKE, M.  
HUTCHINSON  
JAMES  
JESSUP

JOHNSON, N.  
JOHNSON, W.  
JORDAN, F.  
JORDAN, V.  
JOSEY  
JOYNER  
KENT  
KNOX, G.  
LAMB  
LANDIS  
LANGLY  
LEE  
LEWIS, E.  
LONG  
LUPFER  
MCALLISTER  
MOORE, C.  
MOORE, C.  
NELSON  
NIXON, D.  
NIXON, M.

PARKER  
PEGUES  
PHELPS  
PHILLIPS  
POOLE  
ROSE  
SABISTON, E.  
SABISTON, S.  
SALLEY  
SCALES  
TABER  
THIGEN  
THOMAS  
THOMPSON, M.  
TRIPPE  
TRAVIS  
TUCKER  
TURNER  
TURRENTINE  
VENABLE  
VILLEPIGUE  
WADDELL, K.  
WADDELL, M.  
WADDELL, W.  
WALKER  
WAY  
WILKINS, M.  
WILKINS, V.  
WILLARD  
WITHERS  
WRIGHT, A. L.



THE EPSILON ALPHA PI LITERARY SOCIETY

# The Epsilon Alpha Pi Literary Society

Founded 1900

Colors: Olive and Gold

Flower: Jonquil

Motto: Esse Quam Videri

## Officers

ELIZABETH NOLAN	President
DOROTHY KIRTLAND	First Vice President
EVELINA BECKWITH	Second Vice President
LENORE POWELL	Secretary
REBECCA HINES	Treasurer

## Literary Editors

LOUISE EGGLESTON, '22, *Editor-in-Chief*      LENORE POWELL, '22, *Assistant*

## Inter-Society Debaters

SOPHIE EGGLESTON, '24      LENORE POWELL, '22

## Commencement Marshals

LOUISE EGGLESTON, '22      LENORE POWELL, '22, *Chief*      EVELINA BECKWITH, '22

## Honorary Members

MISS BASON	MR. JONES	MISS ROBERTS
MISS BOTTUM	MISS LEE	MISS SEARLE
MISS BROOKS	MISS MCKIMMON	MISS SHEARER
MISS CONE	MRS. PERKINS	MISS SPOFFORD

## Active Members

ANDREWS	COOPER	HART	KELLER	MCCOY	TATEM
ANTHONY	COX	HESTER	KIRBY-SMITH	MACDONALD	TAYLOR
BALLOU	CRUIKSHANK	HIGGS	KIRTLAND, A.	NEWBERRY	TIPLADY, C.
BARTON	DARST	HIN'S, R.	KIRTLAND, D.	NORFLEET	TIPLADY, E.
BECKWITH	DEANS	HOOKEE	KOONCE	OWEN	TRENLER
BONNER	DREW, D.	HOPKINS	LANGSTON	PERKINS	VOSE
BOYD	DREW, M.	HOPKINS	LENOIR	POWELL, H.	WASHEURN
BRATTON	ECCLES	HUSKE, A.	LEWIS, K.	POWELL, L.	WEYMOUTH
BRITT	EGGLESTON, L.	HUTSON	LEWIS, M.	POWELL, M.	WEBB
BROWN, I.	EGGLESTON, S.	JONAS	MARKS, J.	REINHART	WELLONS
BROWN, M.	FITCHETT	JORDAN	MOORE	RICHARDS	WHELFWRIGHT
CABELL	FORBES			ROBERSON, C.	WILSON, A.
CAVE	GAITHER			ROBERSON, H.	WILSON, A.
CHEEK	GRABER			ROBERTS	WISE
CHESSON	GRANTHAM			ROBBINS	WOOD, D.
CLINE, F.	GILMAN			SIMMONS	WOOD, M.
CLINE, H.	GREGG			SMITH	WOOD, R.
COBB, E.	HAIRSTON			STEARN	WRIGHT
CORBS	HARDING			SWETT	WYNNE
COLLIER, E.	HARRISON			TAFT	YARBOROUGH







ASHWORTH      EVERETT      POWELL      BECKWITH      EGGLESTON

### *The Commencement Marshals, 1921*

LENORE POWELL, '22, E. A. II.

EVELINA BECKWITH, '22, E. A. II.

LOUISE EGGLESTON, '22, E. A. II.

MARY LOUISE EVERETT, '22, Σ. A.

JULIA WINSTON ASHWORTH, '22, Σ. A.

### *The Literary Society Activities*

The Literary Societies, named after the two leading Southern poets—Edgar Allen Poe and Sidney Lanier—have, since their organization, played a leading part in the life at St. Mary's. Regular meetings are held to celebrate special occasions—Founder's Day, Armistice Day, Lee's Birthday, Washington's Birthday, etc. For nineteen years, annual Inter-Society Debates have been held, and additional competition between the two societies has been in the form of "Model Meetings."

The Monthly MUSE was edited alternately by each society under the direction of the Society Editor-in-Chief, and as last year, judges were appointed to decide which excelled in this for the year; but, whereas last year the decision was based on the literary section entirely, this year it was on the number as a whole. The Annual Debate, the MUSE, and the "Model Meetings," formed the Society Contest, which is of much interest to the school.

The Societies chose annually the Commencement Marshals, the Chief Marshal being chosen by each in turn.





GAREISSEN

EVERETT

EGLESTON

POWELL

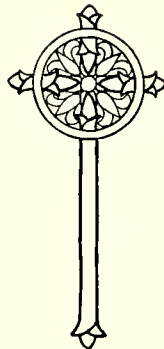
### *Inter-Society Debaters*

*Resolved*, That Immigration into the United States be prohibited by Act of Congress for not less than five years.

*Affirmative*—Epsilon Alpha Pi—SOPHIE EGLESTON, '24, and LENORE POWELL, '23.

*Negative*—Sigma Lambda—MARY LOUISE EVERETT, '24, and MARIETTA GAREISSEN, '22.

*The Judges*—Rev. Milton A. Barber, Rector of Christ Church; Prof. George Summey, Jr., of State College; and Mr. Henry M. London, State Reference Librarian—decided the debate two to one in favor of the negative.





# ATHLETICS

## *Athletic Score, 1920-21*

### *Basketball*

#### FIRST TEAM GAMES:

November 20	.....	Mu 36; Sigma 16
January 15	.....	Mu 35; Sigma 15
April 1	.....	Mu 27; Sigma 16

Won by *Mu*—30 points

#### SECOND TEAM GAMES:

December 11	.....	Sigma 23; Mu 14
March 22	.....	Sigma 31; Mu 23

Won by *Sigma*—20 points

#### THIRD TEAM GAMES:

November 20	.....	Sigma 14; Mu 10
January 15	.....	Sigma 14; Mu 13

Won by *Sigma*—10 points

### *Volleyball*

#### FIRST TEAM GAMES:

March 31	.....	Mu 33; Sigma 24
April 8	.....	Sigma 35; Mu 33
April 22	.....	Sigma 39; Mu 28

#### SECOND TEAM GAMES:

March 31	.....	Sigma 35; Mu 33
April 8	.....	Mu 40; Sigma 23
April 22	.....	Sigma 38; Mu 35

Won by *Sigma*—25 points

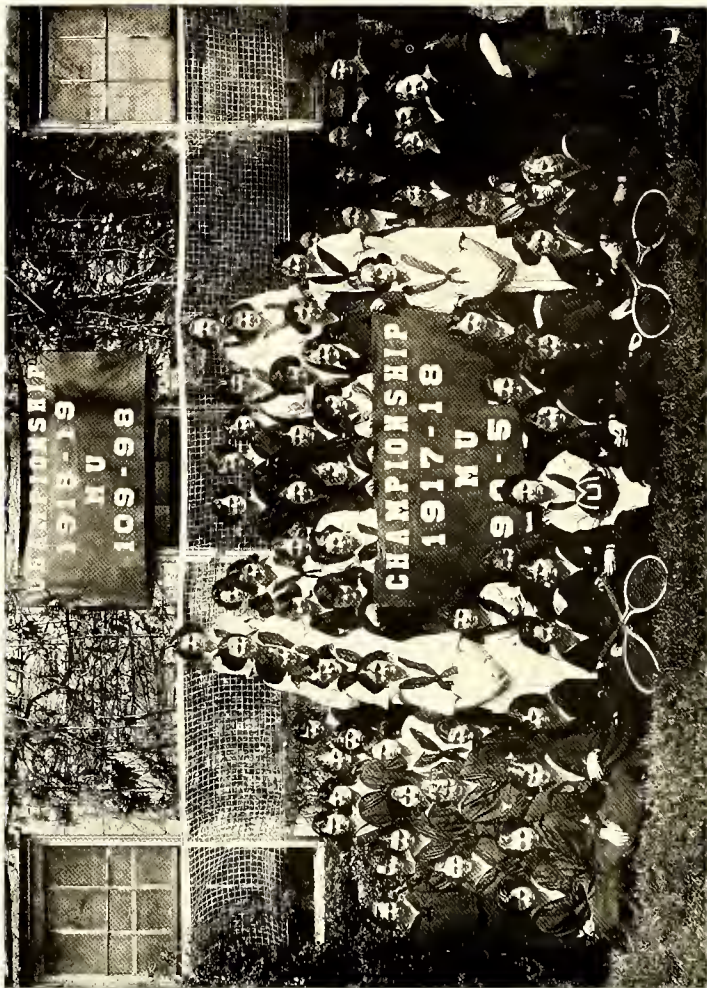
### *Spring Athletic Meet*

	<i>Sigma</i>	<i>Mu</i>
Dash: First, Margaret Wood, Mu		2
Second, Dorothy Baum, Sigma	1	
Relay Race: Won by Sigma	4	
Running Broad Jump:		
First, Kate Richards, Sigma	2	
Second, Hilda Turrentine, Mu		1
Shuttle Relay: Won by Sigma	4	
Basket-ball Throw: Won by Mu		3
First, Emma Villepigue, Mu		1
	11	7

### *Tennis*

*Sigma* 17; *Mu* 10

Total score for year: *Sigma* 83; *Mu* 47



THE MU ATHLETIC ASSOCIATION



## *Mu Athletic Association*

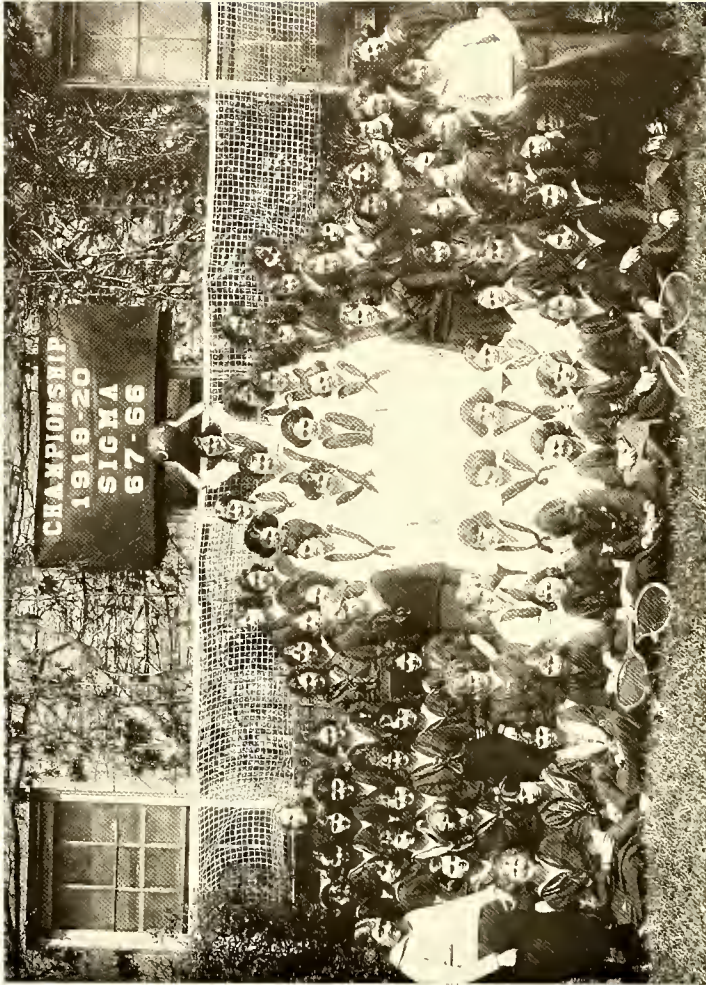
*Colors: Dark Blue and White*

EMMA VILLEPIGUE . . . . .	<i>President</i>
ELIZABETH NELSON . . . . .	<i>Secretary-Treasurer</i>
FLORIDA KENT . . . . .	<i>Manager Basketball</i>
JULIA WINSTON ASHWORTH . . . . .	<i>Manager Volleyball</i>
FRANCES VENABLE . . . . .	<i>Manager Tennis</i>
SARA KELLER . . . . .	<i>Cheer Leader</i>

### *Members*

AMBLER, B.	GAITHER, L.	McCOY, M.
AMBLER, M.	GAREISSEN, M.	NELSON, E.
ASHWORTH, J. W.	GILCHRIST, M.	NEWBERRY, H.
BECHWITH, E.	GLASS, E. L.	NOLAN, E.
BONNER, C.	GOULD, J.	PARKER, B.
BRATTON, E.	GRABER, D.	PERKINS, A.
BRITT, V.	GRESHAM, M.	REINHART, F.
BROWN, B.	HINES, L.	ROBERSON, H.
BROWN, I.	HOLMES, D.	ROBERTS, E.
BRUNSON, A.	HOPKINS, V.	SABISTON, E.
BURGWYN, E.	HOSKINS, F.	SABISTON, S.
CAVE, C.	HUTCHINSON, S.	SALLEY, F.
CHEATHAM, A.	HUTSON, E.	SCALES, A.
CHEATHAM, E.	JAMES, C.	SMITH, L.
CHEEK, E.	JESSUP, S.	SPENCE, C.
CHESSON, E.	JOHNSTON, N.	SWEET, D.
CLINE, F.	JOHNSTON, W.	TAFT, M.
CLINE, H.	JONAS, E.	TATEM, H.
COBB, E.	JORDAN, A.	THIGPEN, V.
COX, A.	JORDAN, F.	THLADY, C.
DARST, M.	JORDAN, V.	THLADY, E.
DEMPSEY, E.	KELLER, S.	TRAVIS, M. E.
DOUGHERTY, M.	KENT, F.	TRIPPE, M.
DOUTHAT, F.	KIRBY-SMITH, C.	TUCKER, E.
DREW, D.	LANDIS, H.	TURRENTINE, H.
DREW, M.	LANGLEY, M. L.	VENABLE, F.
DUNNOCK, L.	LEF, M.	VILLEPIGUE, E.
EAGLES, M.	LENOIR, H.	WAY, E.
EAGLES, R.	LEWIS, K.	WELLONS, M.
FCCLES, H.	LEWIS, M.	WILKINS, V.
FAULKNER, K.	LUPFER, L.	WOOD, D.
FAULKNER, M.	MARKS, J.	WOOD, M.
FITCHETT, S.	MOORE, C.	WOOD, R.
FITTS, L.	MACALLISTER, K.	WRIGHT, S.
FORBES, J.		





THE SIGMA ATHLETIC ASSOCIATION

## *Sigma Athletic Association*

*Colors: Red and White*

DOROTHY BAUM . . . . .	<i>President</i>
SUSANNE PEGUES . . . . .	<i>Secretary-Treasurer</i>
MARY LOUISE EVERETT . . . . .	<i>Manager Basketball</i>
MADGE BLAKELY . . . . .	<i>Manager Volleyball</i>
LENORE POWELL . . . . .	<i>Cheer Leader</i>
MARTHA BEST . . . . .	<i>Cheer Leader</i>

### *Members*

ANDREWS, J.	GILMAN, E.	PEGUES, S.
ANTHONY, E.	GRANTHAM, E.	PHILIPS, A.
AUSLEY, M.	GREGG, L.	PHILLIPS, S.
BALLARD, E.	HAIRSTON, L.	POOLE, E.
BALLOU, B.	HARDING, M.	POWELL, H.
BARBOUR, G.	HARRISON, V.	POWELL, M.
BARTON, E.	HART, E.	RICHARDS, K.
BATTLE, E.	HAWKINS, M.	ROBERSON, C. M.
BAUM, D.	HEATH, E. C.	ROBBINS, R. E.
BEST, M.	HENKEL, L.	ROSE, J.
BLAKELY, M.	HENKEL, V.	SIMMONS, D.
BOYD, L. R.	HESTER, S.	SKINNER, J.
BOYKIN, F.	HIGGS, H.	STANTON, L.
BOYKIN, H.	HINES, R.	STEARNS, E.
BROWNE, G.	HOOKER, L.	TABER, K.
BROWN, M.	HUGHES, A.	TAYLOR, D.
BUDGE, H.	HUSKE, A.	THOMAS, E.
BUICE, L.	HUSKE, M.	THOMPSON, M.
CABELL, E.	JOYNER, L.	TREXLER, E.
CARR, M.	JOSEY, M.	TURNER, J.
CARRIGAN, E.	KIRTLAND, A.	VOSE, J.
CHANDLER, V.	KIRTLAND, D.	WADDELL, K.
COBB, W.	KOONCE, G.	WADDELL, M.
COBBS, D.	KNOX, A. L.	WADDELL, W.
COLLIER, E.	LAMB, M.	WALKER, A.
COLLIER, S.	LANGSTON, J.	WASHBURN, M.
COOPER, D.	LEWIS, E.	WEBB, H.
CRUIKSHANK, A.	LILLY, H.	WHEELWRIGHT, S.
DEANS, V.	LONG, H.	WILLARD, M.
DONNAHOE, B.	MOORE, M.	WILSON, A.
DUNLAP, H.	MOORE, R.	WILSON, V.
EDWARDS, D.	MACDONALD, J.	WISE, M.
EGLESTON, L.	NIXON, D.	WITHERS, M.
EGLESTON, S.	NIXON, M.	WRIGHT, A. L.
ELLIOT, M.	NORFLEET, M.	WYNNNE, N.
EVERETT, M. L.	OWEN, A.	YARBOROUGH, M. W.
GIBBENS, S.		



VENABLE

BROWN

LANGLEY

KENT

BARBER

VILLEPIGUE

## *The Mu Basket Ball Team, 1921*

### *First Team*

FORWARDS	Bessie Brown, Mary Louise Langley
CENTERS	Florida Kent, (Capt.), Harriet Barber
GUARDS	Emma Villepigue, Frances Venable



SECOND TEAM BASKETBALL

VOLLEY BALL

THIRD TEAM BASKETBALL

## *The Mu Basketball Teams, 1921*

FLORIDA KENT, *Manager*

*Second Team*

M. GARFISSEN, M. MCCOY  
 E. NELSON (Capt.), M. WOOD  
 J. ASHWORTH, V. C. WILKINS

*Forwards*  
*Centers*  
*Guards*

*Third Team*

E. HUTSON, V. THIGPEN  
 E. GLASS (Capt.), J. GOULD  
 E. NOLAN, M. GILCHRIST

## *The Mu Volleyball Teams, 1921*

JULIA WINSTON ASHWORTH, *Manager*

*First Team*

WAY  
 AMBLER, M.  
 LANGLEY  
 KENT  
 BARBER  
 VILLEPIGUE  
 VENABLE  
 GRESHAM

*Second Team*

GLASS  
 MCCOY  
 NELSON  
 TUCKER  
 REINHARDT  
 SMITH  
 THIGPEN  
 ASHWORTH

*Substitutes*

WILKINS, V.  
 SALLEY  
 AMBLER, B.  
 WOOD, M.





	EVFRETT	
THOMPSON		BALLOU
HAWKINS	BAUM	NIXON

*The Sigma Basketball Team, 1921*

FORWARDS	.....	Madge Blakely, M. Nixon
CENTERS	.....	E. Ballou, M. Hawkins
GUARDS	.....	D. Baum, M. L. Everett (Capt.)





SECOND BASKETBALL

"BAUM"

THIRD BASKETBALL

## *The Sigma Basketball Teams, 1921*

MARY LOUISE EVERETT, *Manager*

*Second Team*

M. THOMPSON, M. BROWN  
 M. POWELL, F. BOYKIN  
 M. YARBOROUGH, D. COOPER

*Forwards*  
*Centers*  
*Guards*

*Third Team*

S. COLLIER, K. RICHARDS  
 L. HAIRSTON, S. PHILLIPS  
 D. NIXON (Capt.), C. ROBERSON

## *The Sigma Volleyball Teams*

MAJGE BLAKELY, *Manager*

*First Team*

POWELL, M.  
 THOMPSON, M.  
 PHILLIPS, S.  
 COLLIER, E.  
 EVERETT, M. L.  
 NIXON, D.  
 BLAKELY, M.  
 BAUM, D.

*Second Team*

WILLARD  
 COOPER  
 NIXON, M.  
 BROWN, M.  
 WITHERS, M.  
 BOYKIN, H.  
 PEGUES, S.  
 COLLIER, S.

*Substitutes*

RICHARDS  
 YARBOROUGH  
 HUSKE, M.  
 EGLESTON, S.



TENNIS PLAYERS OF 1920-1921

### *The Tennis Tournament, 1921*

Each Association was represented by a team of eight players, and the players of one team played the corresponding players of the other in an elimination tournament, each winner gaining a certain number of points for her side. In the Final Contest, the winner became the School Champion of the Year.

#### *The Teams*

FRANCES VENABLE, *Mu*, Manager

LENORE POWELL, *Sigma*, Manager

*Mu*

*Sigma*

#### *The Final Contest*

## Association Yells

### MU

Hit 'em high! Hit 'em low!  
Mu Team, let's go!

Fight for the Mu Team,  
The Mu Team will win,  
Fight to a finish, never give in.  
Rah! Rah! Rah!  
You do your best girls,  
We'll do the rest girls,  
Fight for the old Mu Team.

M-U, Rah! Rah!  
M-U, Rah! Rah!  
Hoo-rah, Hoo-rah!  
Team, Team, Team,  
Mu Team, Rah! Rah!  
Mu Team, Rah! Rah!  
Hoo-rah, Hoo-rah!  
Team, Team, Team.

*Tunc:* (There'll be a Hot Time in the  
Old Town Tonight.)

Cheer girls cheer, your comrades brave and  
bold,  
Cheer girls cheer, as you have done of old,  
There'll be a Rah, Rah, Rah, for every  
single goal.  
There'll be a hot time in the old school  
tonight.  
We'll pass that ball like Mus,  
We'll pass that ball like Mus,  
When the guards are weak,  
We'll pass it through.  
When the guards are strong,  
We'll pass it too.  
We'll pass that ball like Mus.

We beat about a month or so ago,  
We beat about a thousand times before.  
And we'll beat again tonight,  
So we're ready for the fight,  
And we're betting on the Mu Team, now  
let's go!

M-U-!  
That's the way to spell it!  
Ray—M-U-!  
That's the way to yell it.

### SIGMA

Ray! Ray! Row! Row!  
Sigmas! Show 'em how!

Who's going to win, win?  
Who's going to win, win?  
Who's going to win, win? Wow!  
We're going to win, win!  
We're going to win, win!  
We're going to win, win! How?  
Easy!

Your pep! Your pep!  
You've got it, now keep it,  
Dog-gone it, don't lose it!  
Your pep!

*Tunc:* (Sweet Kisses)

Sigma girls are peppy,  
Sigma girls are fine,  
Sigma girls are gonna beat 'em every time,  
Mu team's gonna battle,  
Mu team's gonna fight,  
But Gee! What a beating they will get  
tonight!

Everybody happy?  
Well yes!  
Anybody downhearted?  
Well no!  
Then take it slow!  
You, Rah! Rah! Rah! Sigmas!  
You, Rah! Rah! Rah! Sigmas!  
You, Rah! Rah! Rah! Sigmas!

Rah!  
Oh! Good gracious!  
How audacious!  
That the Mu Team dares to face us!  
Can they beat us?  
No!  
Sigma!

Sigma girls are high-minded,  
B'lieve to my soul they're double-jointed,  
They play ball and don't mind it,  
All  
Day  
Long!



*The Dramatic Club*

MISS FLORENCE C. DAVIS . . . . . *Director*  
 FIELDING DOUTHAT . . . . . *President*  
 MARIETTA GAREISSEN . . . . . *Secretary*  
 DOROTHY KIRTLAND . . . . . *Business Manager*

ELIZABETH ANTHONY  
 BETSY BALLGU  
 MARTHA BEST  
 BESSIE BROWN  
 MARJORIE BROWN  
 LOUISE BUICE  
 ELIZABETH CABELL  
 DOROTHY COBBS

DAISY COOPER  
 FIELDING DOUTHAT  
 HERMOINE DUNLAP  
 MARY LOUISE EVERETT  
 SUSAN FITCHETT  
 MARIETTA GAREISSEN  
 ELIZABETH GRANTHAM  
 MARY GILCHRIST

FRANCES HOSKINS  
 ANNE KIRTLAND  
 DOROTHY KIRTLAND  
 KATHERINE MACALISTER  
 FRANCES VENABLE  
 JULIANA VOSE  
 MARJORIE WILKINS  
 VIRGINIA H. WILSON

## *The Red Cross*

The St. Mary's Auxiliary to the Raleigh Chapter of the American Red Cross has had for three years a 100 per cent membership in the School of both faculty and students.

During the spring of 1921 a First Aid Class of twenty-one members was conducted under the directorship of Dr. Neale.

*The Executive Committee for 1920-21 is made up of:*

HELEN BUDGE, <i>Chairman</i>		
MARIETTA GAREISSEN . . . . .		<i>Secretary</i>
MURIEL DOUGHERTY . . . . .		<i>Treasurer</i>
FRANCES VENABLE . . . . .		
ELIZABETH CARRIGAN . . . . .		
MISS LIZZIE H. LEE, <i>Director</i>		

## *The College Club*

The College Club was established in 1921 under the guidance of Miss Ophelia S. Stone.

FRANCES HOSKINS . . . . .		<i>President</i>
ELEANOR HOPE COBB . . . . .		<i>Secretary</i>
LALLA ROOKH BOYD	DORIS SWETT	EVELYN WAY
LOUISE GREGG	DOROTHY TAYLOR	MARION WISE
ANNE SCALES	CHARLOTTE TIPLADY	NELLIE WYNNE
CLARE SPENCE	FRANCES VENABLE	MARY WIATT YARBOROUGH



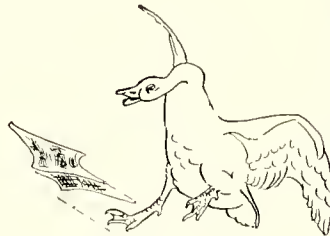


## *The Chorus*

Miss SPOFFORD ..... *Director*  
 Miss ROBERTS ..... *Accompanist*

AMBLER, M.  
 BECKWITH, E.  
 BROWN, B.  
 BOYD, L. R.  
 CABELL, E.  
 COBBS, D.  
 COLLIER, E.  
 DARST, M.  
 DOUGHERTY, M.  
 DUNLAP, H.  
 ELLIOT, M.  
 EGLESTON, L.  
 FRANKLIN, M. F.  
 FRAZIER, K. L.  
 GILCHRIST, M.  
 GILMAN, E.  
 HART, E.  
 HARRISON, V.  
 HAWKINS, M.  
 HENKEL, L.

HIGGS, H.  
 HUGHES, A.  
 HUTSON, E.  
 JORDAN, A.



KELLER, S.  
 KIRBY-SMITH, C.  
 KIRTLAND, A.  
 LEWIS, K.  
 LONG, H.  
 MACALISTER, K.  
 MACDONALD, J.  
 NEWBERRY, H.  
 POWELL, H.  
 POWELL, M.  
 ROBBINS, R. E.  
 ROBERSON, H.  
 SILER,  
 STOCKARD,  
 TIPLADY, E.  
 WADDELL, W.  
 WAY, E.  
 WILSON, V. H.  
 WOOD, M.  
 WRIGHT, A. L.



## *The Sketch Club*

*Flower:* "Devil's Paint Brush."

*Colors:* Purple and Gold.

*Motto:* "Use your ounce."

MISS FENNER		<i>Critic</i>
DOROTHY KIRTLAND		<i>President</i>
KATHERINE WADDELL		<i>Secretary-Treasurer</i>

BARBER, H.  
CARR, M.  
CHEATHAM, E.  
DEMPSEY, L.  
ECCLES, H.

EGLESTON, S.  
FORBES, J.  
GLASS, E.  
GREEN, F.

HENKEL, V.  
KIRTLAND, D.  
KIRBY-SMITH, C.  
KNOX, A. L.

PHILLIPS, S.  
ROSE, J.  
ROBERSON, C. M.  
WADDELL, K.  
WILKINS, V.

### *From an East Window*

*A soft wind lifts the curtains; gently stirs  
The ivy creeping on my window sill,  
And murmurs thru the bamboo rustling 'gainst  
The wall like ghostly whispers; in the still  
Sweet hush of night. And all the Grove is dark  
Somewhere the beams of some forgotten light  
Trace shadows on the gray old "Rocks,"—the walls  
Which spring bedecks with purple and with white  
Wistaria festoons. Soft "breath o' spring,"  
And violets grow around and in the grass;  
But they are hid at night; I only see—  
The Grove, the trees, the twinkling lights that pass  
At intervals along the quiet street,—  
Mute echoes of the closing, busy day.  
The moon comes up, and, sifting thru the leaves  
Her light, makes strange fantastic figures play  
About the corner of the porch; the vines  
And grass and garden plots, the roses too  
Take on new guise. The tall white pillars stand  
Like sentinels, outstanding in the blue  
Deep canopy of night. The twinkling stars,  
The trees, the columns, all their vigil keep.  
The breeze blows stronger and the night is chill  
And nature, sleeping, calls my thoughts to sleep.*

*Louise Eggleston.*



## Among Ourselves





## *The Calendar, 1920-21*

SEPTEMBER 14-15—TUESDAY, WEDNESDAY: Opening days of the 79th Annual Session. Arrival of new girls Tuesday; return of old girls Wednesday; formal opening of School Thursday morning.

SEPTEMBER 18—SATURDAY: Opening reception, Old Girls to New Girls in the "Parlor," Smedes Hall.

SEPTEMBER 23—"Thursday Talk" at 7:00 by the Rector.

SEPTEMBER 26—SUNDAY: Mrs. Bonner's talk to the Church School Service League in the Parlor after supper.

OCTOBER 3—SUNDAY: First Inter-Chapter meeting of the Church School Service League.

OCTOBER 7—THURSDAY: Reception for Mr. and Mrs. Erwin and Mrs. Leak in the Parlor. Bishop Cheshire's talk in assembly.

OCTOBER 11—MONDAY: First "Pay Day" after assembly in the morning under the direction of Susan Collier, Business Manager of the MUSE.

OCTOBER 16—SATURDAY: "Bloomer Party" in the Gym, 8:15.

OCTOBER 18—MONDAY: Faculty recital.

OCTOBER 19—TUESDAY: Historical pageant given under the auspices of the Woman's Club of Raleigh.

OCTOBER 20-21—WEDNESDAY AND THURSDAY: Holidays; State Fair. "Irene" Musical Comedy. Matinee Thursday 3:30 for School, and 8:00 for Seniors. Carolina-N. C. State Football Game 2:30.

OCTOBER 23—SATURDAY evening Mr. and Mrs. Cruikshank entertain the MUSE Club with a Hallowe'en Party.

OCTOBER 24—SUNDAY: Inter-chapter meeting of the Church School Service League on the Blue Ridge Conference.

OCTOBER 25—MONDAY: Lecture recital in the auditorium by John Powell and George Harriss, Jr. "The Americanization of Music."

OCTOBER 29—SATURDAY: Hallowe'en Ball in the Gymnasium, 8:15, with the Senior Stunt, showing "The Faculty in Their Childhood Days."

NOVEMBER 1—MONDAY: Founders' Day; Regular All Saints' Day service at 11:00 o'clock.

NOVEMBER 4—SATURDAY: Class Parties. Seniors to Sophomores in the "Parlor." Juniors to Freshmen in the "Lobby," and Preps in the Gym.

NOVEMBER 6—SATURDAY: The MUSE Club Japanese Tea in the MUSE Room at 8:15.

NOVEMBER 8—MONDAY: Junior Picnic to Seniors at Lassater's Mill.

NOVEMBER 11—THURSDAY: Studio Tea given by Miss Fenner to the art students.

NOVEMBER 13—SATURDAY: Carolina Glee Club in the auditorium at 8:30.

NOVEMBER 16-18—TUESDAY AND WEDNESDAY: Model meetings of the Sigma Lambda and the E. A. P. Literary Societies.

NOVEMBER 18—WEDNESDAY: "The Ladies of Cranford" presented by the Expression Class at 5:15 in the Auditorium.

NOVEMBER 20—SATURDAY: First basketball games of the season. First and Third Teams.

NOVEMBER 25—THURSDAY: Thanksgiving Day Special Service with Near East Relief Offering in the morning. School Holiday.

NOVEMBER 27—SATURDAY: MUSE Club "Circus" in the Gym at 8:55.

DECEMBER 4—SATURDAY: Basketball. First Team Mu's victorious.

DECEMBER 5—SUNDAY: Inter-chapter meetings of the Church School Service League in the Parlor at 7:00.

DECEMBER 11—SATURDAY: Basketball, Second Team, Sigma 16, Mu 14.

DECEMBER 12—SUNDAY: The Every-Member Canvass of the Nation-Wide Campaign conducted by Church School Service League Council during Quiet Hour.

DECEMBER 18—SATURDAY: "The Christmas Doll," written by Katherine Waddell, presented by the Seniors in the Auditorium at 8:00, followed by the Christmas Tree Entertainment in the Gym. Fielding Douthat as Santa Claus.

DECEMBER 20—MONDAY: Christmas Carols sung by the Seniors early in the morning. Departure for the holidays.

JANUARY 4—TUESDAY: School duties resumed after the holidays.

JANUARY 6—THURSDAY: "Thursday Talk" by the Rector at 7:15.

JANUARY 10—MONDAY: Peace - St. Mary's Concert by Miss Rumsey in Auditorium at 8:15.

JANUARY 15—SATURDAY: Basketball; First- and Third-Team games; Mu's victorious First-Team game, Sigmas victorious Third-Team game.

JANUARY 17—MONDAY: Shumann-Heink Concert City Auditorium at 8:30.

JANUARY 20-22—THURSDAY-SATURDAY: Mid-term examinations.

JANUARY 23—SUNDAY: Chapter meetings of the Church School Service League.

JANUARY 27—THURSDAY AFTERNOON: At Home at the Rectory for the Seniors. Host and Hostess: Rev. and Mrs. Way.

JANUARY 29—SATURDAY: Return of the School Parties. Sophomores to Seniors, and Freshmen to Juniors. Preps to Preps at 8:15.

JANUARY 31—MONDAY: Fashion Show by St. Agnes Chapter at 4:30 P.M.

FEBRUARY 5—SATURDAY: Kreisler Concert Raleigh Auditorium, at 8:30.

FEBRUARY 7—MONDAY: Stunt Night for benefit of Chinese Relief at 8:00 in St. Mary's Auditorium.

FEBRUARY 8—TUESDAY: Shrove Tuesday. Annual Colonial Ball in the Parlor at 8:15.

FEBRUARY 9—WEDNESDAY: Ash Wednesday. Observed as a Holy Day.

FEBRUARY 9—MARCH 27: Lenten Quiet. Lenten services with brief addresses by the Rector Wednesday and Friday afternoons in the Chapel. Special work of all the Church School Service League Chapters. Mission Study Classes on Sunday evenings.

FEBRUARY 26—SATURDAY: Quarantined on account of diphtheria in school.

MARCH 3—THURSDAY: "Thursday Talk" by Dr. Brewer, President of Meredith College, Raleigh.

MARCH 4—FRIDAY: Quarantine lifted.

MARCH 5—SATURDAY: Carolina-Trinity Basketball Game in the City Auditorium attended by the Seniors and Juniors.

MARCH 10-15—THURSDAY-TUESDAY: Spring Holidays.

MARCH 20—SUNDAY: Palm Sunday. Confirmation in the afternoon. Inter-Chapter meeting in the Parlor at 7:15.

MARCH 21—MONDAY: Basketball game: Second team: Sigma's 35, Mu's 21. Score for banner: Sigma 30, Mu 0.

MARCH 24—SUNDAY: Easter Sunday. Service at 8:00 A.M., 11:00 and 5:00 P.M. The "eight little orphans" dressed by the chapters dine at the school. Dean Haskell, of Columbia University, delivered an interesting address in the Parlor at 7:15.

MARCH 28—MONDAY: Annual Easter Egg Hunt in the Grove at 7:00.

MARCH 31—THURSDAY: Expression class recital in the auditorium at 5:00 P.M. Volleyball season opened at 7:15 in the Gym. First team won by Mu; second team won by Sigma.

APRIL 1—FRIDAY: Basketball game. First team, Mu's victorious. Score towards banner, Mu 30, Sigma 30.

APRIL 2, SATURDAY: Mr. Edward Morris' piano recital in the St. Mary's Auditorium at 8:30.

APRIL 6—WEDNESDAY: Gluck-Zimbalist Concert in the City Auditorium at 8:30.

APRIL 9—SATURDAY: Annual Inter-Society Debate.

APRIL 23—SATURDAY: Annual Junior-Senior Banquet.

APRIL 26—TUESDAY: Model meeting of E. A. P. Literary Society.

APRIL 28—THURSDAY: Model meeting of Sigma Lambda Literary Society.

APRIL 30—SATURDAY: Expression Recital of Miss Fielding Douthat.

MAY 2—MONDAY: "May Day." Mary Louise Everett as May Queen.

MAY 2—SATURDAY: Annual School Party in the Parlor.

MAY 14—SATURDAY: Chorus Recital.

MAY 16—MONDAY: Spring Athletic Meeting at 4:00 P.M.

MAY 19-21—THURSDAY-SATURDAY: Final examinations.

MAY 21-24: SATURDAY-TUESDAY: Commencement Exercises.

MAY 21—SATURDAY EVENING: Dramatic Club under direction of Miss Davis presents "The Professor's Love Story," by Barrie, in the Auditorium.

MAY 22—SUNDAY: Commencement Sunday.

MAY 23—11:00 A.M.: Class Day Exercises in the Grove; Alumnae Luncheon; 6:00 P.M.: Art Exhibit in the Studio; 8:30 P.M.: Annual Concert of the Music Department; 9:30 P.M.: Rector's Reception to the Alumnae and Visitors in Honor of the Graduating Class.

MAY 24—11:00 A.M.: Commencement Day. Graduating Program in the Auditorium with annual address by President Harry Woodburn Chase, of the University of North Carolina. Awards, announcements. Final exercises in the Chapel with presentation of the Diplomas to the graduates.



FRANCES VENABLE  
*"Best All-round"*

DOROTHY KIRTLAND  
*"Most Influential"*

JOSEPHINE ROSE  
*"Neat st"*





MABEL HAWKINS  
*"Prettiest"*

ELIZABETH NOLAN  
*"Most Courteous"*

MARY JOSEY  
*"Best Student"*



DOROTHY BAUM  
*"Most Popular"*  
*"Most Wide-Awake"*

MATILDA LAMB  
*"Most Lovable"*

FIELDING DOUTHAT  
*"Most Attractive"*

ELLA CRAWFORD HEATH  
ELIZABETH CARRIGAN  
*"Best Dancers"*





EMMA VILLEPIGUE  
*"Most Athl'tic"*

LOUISE EGLESTON  
*"Most Talented"*

LOUISE BUICE  
*"Best Looking"*

SARAH JESSUP  
*"Cutest"*

*Some Further Verse of Mr. H. E. Hodgson, Who Wrote  
the Words of "Alma Mater"*

*Song of the Frog*

*A little frog sat musing and soliloquized he thus:  
I don't see what's the use of making such an awful fuss  
Because one can't have all one wants and fortune sometimes freezes;  
A froggy's way through life, you know, is full of ups and downs,  
So when bad boys come running by and gather rocks to chuck  
I just hop to the water's edge, and in I go, "Ker plunk."*

*I've got a little froggy wife, and love her right along,  
Her dresses fit her nicely, but she's got an awful tongue,  
She loves to croak and croak and croak and tear things all to bits  
And if I happen to be there she simply gives me fits.  
But when she makes it too blamed hot and I can't stand the clash  
I just hop to the water's edge and in I go, "Ker splash."*

*To frogs I would a moral point, to tads adorn a tale  
And tell how better far it is to laugh than weep and wail,  
First work your very gizzard out to make things go your way  
Then if you can not make them go just tell them, "Durn you, stay!"  
It doesn't pay to sit and croak, so when you've lost the trump  
Just hop down to the water's edge and in you go, "Ker slump."*

*Punctuality*

*If you see a man walking  
At leisurely pace;  
Just loafing along  
With a smile on his face,  
He started on time, you will find.  
Another comes scurrying,  
Hurrying, worrying,  
His face all awry  
And an outstanding eye—  
He started a little behind.*

*All the leisure in life,  
All the pleasure in life  
Belongs to the man that's on time.*



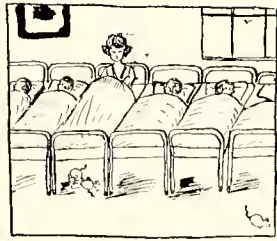
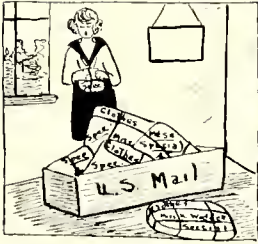
### *A Rhyme O' the Year*

*The first few days of schooldom  
 Were hectic quite, last fall,  
 Matriculation, schedules  
 And homesickness and all.  
 But when we once were settled  
 And wits were sharpened keen,  
 We stopped our studies long enough  
 To play, at Hallowe'en.*

*The Goblins and the Fairies  
 Came flocking to the gym,  
 The seniors chilled our backbones  
 As ghosts in moonlight dim.  
 The next event was Christmas,  
 But lots occurred between,  
 For all the "babies" bobbed their hair  
 And tall ones too, I ween!*

*The Senior play at Christmas time  
 Surprised us one and all,  
 We didn't know the Senior Class  
 Possessed a Christmas Doll!  
 Down in the Gym the Christmas tree  
 A festive scene and gay,  
 The carols in the early morn,  
 And we were off next day.*





The same old train that took us off,  
 Alas, soon brought us back,  
 And after us by parcel post  
 Came things we failed to pack!  
 And then exams, those dread exams!  
 We crammed and did our best  
 But when we flunked we thought 'twas time  
 We took a little rest.



Infirmary blues, we had them then,  
 The worst you've ever seen,  
 They grew and grew, diphtheria, too—  
 Resulted—Quarantine!  
 Oh well, the worst of times will pass,  
 And brighter days will come—  
 The holidays on March the tenth  
 Spelled H-O-M-E, home!

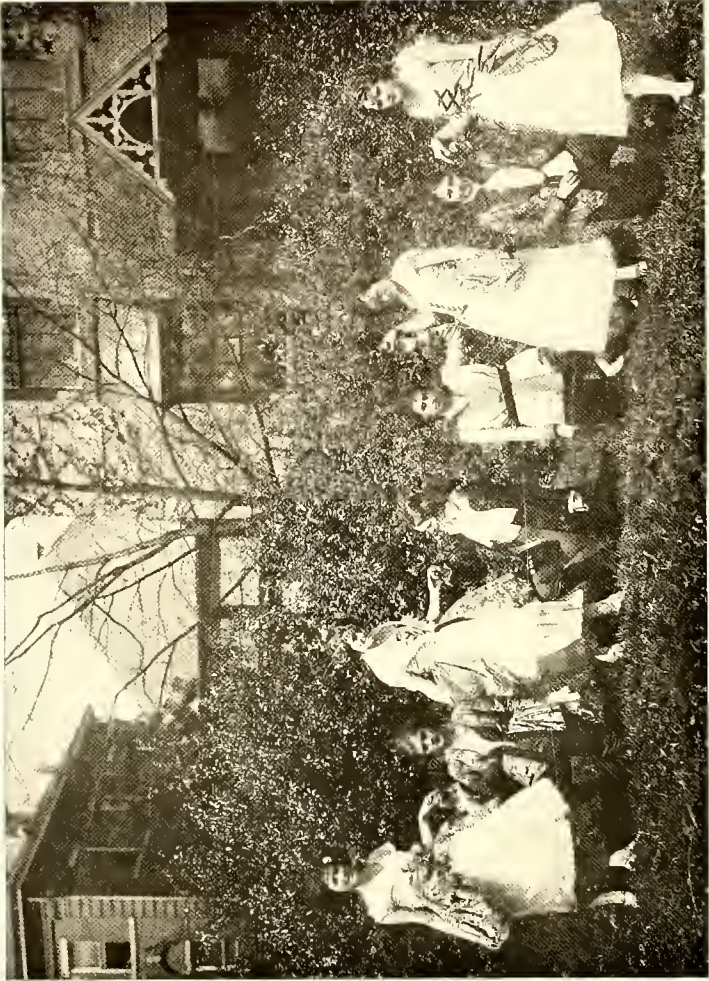


Oh, how the days of April flew,  
 And then the days of May;  
 On rocks and walls the roses bloomed  
 And springtime came to stay.  
 And so Commencement day is here,  
 And with the last sweet note,  
 "Jerusalem, High Tower," we sing,  
 A lump comes in our throat.



We love our friends, the dear old grove,  
 Each minute more and more—  
 And then the school year Twenty-One  
 And all it's fun is o'er.

Katherine Waddell, '21.



THE MINUET—A REMINDER OF THE COLONIAL BALL

# Reminders of "Stunt Night"

By SARAH PHILIPS



# FADS

## *Bobbed Hair*

*Sing a song of bobbed hair,  
Maidens short and tall—  
Some with lots of little curls,  
Some with none at all,  
When its crimped and curly  
They're a pretty sight—  
But what a strange appearance  
They make at tea at night!*



## *Wanted by Every Senior*

*One brain containing all the junk  
That Seniors should remember,  
One "dip" that stands for all the work  
We've done since last September;  
One daisy chain that made the Juniors  
At day-break leave their beds,  
One hundred handkerchiefs to catch  
The parting tears we'll shed,  
One trunk that's filled with all the gifts  
That make us feel elated,  
One train to take us home, sweet home  
When we have graduated!*

*Katherine Waddell, '21.*

## *The Gingham Dog and Calico Cat*



*We're quite a novelty  
But I've seen a sight that rivalled those  
'Twas the latest fad in clothes  
At S. M. S., when some girls chose  
To practice quite the newest pose  
Of strict economy.*

*A remarkably busy time was that!  
With endless industry—  
The needles, thread, and scissors flew  
Thru gingham black, and brown and blue.  
And countless other colors too;  
And so appeared the dresses new  
In great variety!*



*For tall girls, short girls, thin girls, fat  
Were all caught up you see  
In what was fashion's latest tide.  
In waists so wee and skirts so wide.  
And what was best on every side,—  
When asked the cost each maid replied:  
"One dollar, twenty-three!"*

*Louise Eggleston.*





THE "PREP" BAND



THE "TOY SHOP"

## *Impossible!*

*Louie Fitts has paid her dues—*

*Imagine it!*

*Dorothy Baum once had the blues—*

*Imagine it!*

*Martha's clothes are old and quaint—*

*Mary Taft acts like a saint—*

*And Evelyn's face is red with paint—*

*Imagine it!*

*Julia Marks is tall and thin—*

*Imagine it!*

*Tucker's never seen with Twin—*

*Imagine it!*

*Mary Wiatt at last is grown—*

*A class behaves for Mr. Stone—*

*And Bessie Brown is seen alone—*

*Imagine it!*

*Florida Kent has gotten fat—*

*Imagine it!*

*M. L. Everett pets the cat—*

*Imagine it!*

*Miss Davis never rings the bell—*

*Check knows something she won't tell—*

*And Doris misbehaves—Oh well—*

*Imagine it!*

K. W.



# APT QUOTATIONS

"For my part getting up seems not so easy by half as lying"—*at 7 A.M.*

"I awoke one morning and found myself famous."—*Statistics.*

"There was a sound of revelry by night."—*Junior-Senior Bauquet.*

"One little hour, and then away they speed."—*Dates on Saturday Night.*

"But there's a gude time coming."—*I'acation.*

"Since there is no help, come let us kiss and part."—*Crushes at 9:50 P.M.*

"Who can direct, when all pretend to know?"—*Mr. Stone's History Classes.*

"'Tis well to be off with the old love, before you are on with the new."—*Maurine Moore.*

"But are you so much in love as your rhymes speak?"—*L. Egleston.*

"They love indeed who quake to say they love."—*Crushes.*

"Sofas 'twas half a sin to sit upon."—*In the Parlor.*

"I rose at the dawn of day."—*The Juniors and the Daisy Chain.*

"To live in the hearts we leave behind."—*The Seniors.*

"There's villainous news abroad."—*Rumors.*





## *The Muse*

A BRIEF HISTORICAL REMINISCENCE

It is only necessary to turn to the title page to see that this is the "twenty-third volume of *THE MUSE*," and a little delving into the files would show that it is the seventeenth annual issued in conjunction with the "monthly *MUSE*," and the tenth published by the *MUSE* Club as at present organized.

During the past ten years the *MUSE* Club has sought to serve the School not only in producing as good monthly and annual *MUSES* as was possible in the circumstances, but by seeking to maintain and strengthen in every way the old St. Mary's spirit of loyalty and devotion and interesting itself in whatever in school life seemed to work to that end. The *MUSE* Club has meant much to its members during their school life and their efforts have meant much to the School.

The *MUSE* Club has sought to preserve in the published *MUSES* the record of events that go to make up the history of the years and of the people who have had their part in making this history. But the memories of most of us are short and the daily life is too full for most of us to do much delving. Sometimes too the *MUSE* has failed to function and some of the records are not as complete as they should be.

We want, therefore, at this time and in this place to call to the minds of the present-day girls of St. Mary's two persons who gave largely of themselves for St. Mary's, who need no recalling to the memories of the girls of ten years ago, and who are very much alive to the girls of today in the life they have inherited in the School, though they think little of them by name—"Miss Thomas" and "Mr. Hodgson." There is space here only to mention their names but even that mention will bring a flood of memories to those who knew them. Both loved St. Mary's and St. Mary's girls. Both took a lively interest in *THE MUSE* and contributed largely to its success. Mr. Hodgson will continue to be remembered as having written the words of "Alma Mater," but that was but one of his many contributions to the happiness of the St. Mary's of his day which extended over nearly thirty years. In "Our Eleanor" the girls of 1915 at their "School Party" voiced the universal regard for Miss Thomas of all the girls of all her years here.

The *MUSE* Club of today while recalling only these two friends by name would however also express its thanks to that legion of other friends—both teachers and girls—who have ever co-operated with it in its efforts. *THE MUSE* of 1921 is not what the *MUSE* Club would have it, nor have any of the preceding members met its longed for standard, but it represents an honest effort to attain that standard and a hearty desire to contribute to the well-being of the St. Mary's of today and the happiness of the members of the School.





## *The Muse Club*

FRANCES VENABLE, '21		<i>Chairman</i>
CAROLINE MOORE, '21		<i>Secretary</i>
SUSAN COLLIER, '21		<i>Business Manager</i>

DOROTHY BAUM, '23  
 EVELINA BECKWITH, '22  
 HELEN BUDGE, '23  
 ELIZABETH CARRIGAN, '21  
 ELEANOR HOPE COBB, '21  
 SUSAN COLLIER, '21  
 MURIEL DOUGHERTY, '22  
 FIELDING DOU'CHAT, '21  
 LOUISE EGGLESTON, '22  
 MARY LOUISE EVERETT, '23

MARIETTA GAREISSEN, '22  
 MARGARET HUSKE, '22  
 VIRGINIA JORDAN, '21  
 FLORIDA KENT, '21  
 DOROTHY KIRTLAND, '21  
 MATILDA LAMB, '24  
 HENNIE LONG, '22  
 CAROLINE MOORE, '21  
 ELIZABETH NELSON, '21  
 ELIZABETH NOLAN, '21

MABEL NORFLEET, '23  
 SUSANNE PEGUES, '21  
 LENORE POWELL, '22  
 KATHARINE TABER, '23  
 ELIZABETH THOMAS, '23  
 ELEANOR TIPLADY, '21  
 HILDA TURRENTINE, '23  
 FRANCES VENABLE, '21  
 EMMA VILLEPIGUE, '24  
 KATHERINE WADDELL, '21

MISS FRANCES BOTTUM, '12

MR. CRUIKSHANK, Faculty Director

*Muse Board, 1921*

FRANCES P. VENABLE, '21, *Chairman*

*Literary Editors*

KATHERINE WADDELL, '21

LOUISE EGGLESTON, '22

DOROTHY KIRTLAND, '21, *Art Editor*

*Assistant Editors*

LENORE POWELL, '22

FLORIDA KENT, '21

MARGARET HUSKE, '22

REBECCA HINES, '21

MARY LOUISE EVFRETT, '23

*Business Managers*

SUSAN COLLIER, '21, *Business Manager*

HELEN BUDGE, '22, *Assistant Business Mgr.*



*The Muse Board of 1920-21*

POWELL

KIRTLAND

HUSKE

KENT

EVERETT

HINES

BUDGE

WADDELL, *Literary Editor*

VENABLE, *Chairman*

COLLIER, *Bus. Mgr.*

EGLSTON, *Literary Editor*

*Here's the book,  
We've done our best,  
We hope it's brought,  
By rhyme or jest,  
A smile, a sigh,  
Mayhap a tear,  
And happy memories  
Of the year.*

*K. M. W.*

