

## **Historic, Archive Document**

Do not assume content reflects current scientific knowledge, policies, or practices.



65.05

121/12

---

# TREES

**KIRKMAN  
NURSERIES**

**FRESNO  
CALIFORNIA**

---

# PRICE CATALOG

---

SEASON 1921-1922

## TO OUR CUSTOMERS:

**I**N sending this little pamphlet to our customers we have made no effort to submit a comprehensive treatise on orchard and vineyard problems. General instructions and recommendations are fairly satisfactory usually in smaller plantings and where no particular problem is to be considered, but we prefer to confer or communicate with each individual customer who wishes suggestions from us relative to his particular planting project, climatic and soil conditions duly considered. Our aim is to lend every possible assistance to each customer.

One of our customers will, on our recommendation, finish planting sixteen hundred acres of stone fruits this season by December 20th with fair weather conditions. In this instance the soil is heavy, sometimes making mid-winter planting impossible.

Other conditions may call for somewhat different preparation and procedure. On request we will discuss and advise to the best of our knowledge.

We recommend that every one interested in fruit growing send \$4.00 to the Pacific Rural Press, S. F., for Prof. Wickson's "California Fruits and How to Grow Them," also an extra dollar for a year's subscription to the Rural Press is an excellent investment.

During the past several months many reports have come to us to the effect that our nursery business is in large part owned by another nursery operator. We wish to correct this error. No one outside of the Kirkman family owns or in any way has or now controls any part of the ownership or direction of this institution. No stock is for sale—except an excellent stock of trees and vines.

Our customers are our only bosses.

Yours for satisfactory business.



President of Kirkman Nurseries Inc.

Fresno, Cal.

Member of The Nurseryman's Bud Selection Association  
of California.

# ANNOUNCEMENT

This price catalog describes fruit trees, and vines recognized as the standard profitable varieties for commercial planting in California.

We have been called on to supply nursery stock for the planting of approved, tried out varieties by those interested in the fruit industry on a commercial basis to an extent that makes it inadvisable for us to undertake to solicit orders for specialties, ornamental stock, or purely retail lists of fruit trees.

Fully ninety-eight percent of our stock goes to those planting at least a few acres. On the last page of this catalog will be found a schedule of prices governing the delivery of small orders. With the description of each group of varieties is given the thousand rate. Three hundred or more trees of each group will be sold at the thousand rate. No charge is made for packing material used when carload orders are shipped. In less than carload shipments the cost of packing material is added.

Shipments of large orders are made direct from Nursery Plants, smaller orders from our packing yard at Fresno.

We are growing nursery stock in twenty-one different locations in California, one in Oregon, and one in Arizona. In this way we aim to eliminate the danger of very serious loss to our customers and ourselves, if some disease or insect invasion, or loss from other causes, should make it necessary to destroy the stock on one or more of our locations.

There are a total of more than five million trees and vines in course of propagation in our several nurseries. We discard all plants that are of questionable quality, and grade up to a high standard before delivering to our customers. We do not wish to endeavor to compete in price with inferior nursery stock; but we do aim to compete **SUCCESSFULLY**, price, quality and dependability being considered. "He profits most who serves best" is our understanding of our craft. We have faith in the good judgment of those interested in fruit growing, and are confident that quality and dependability, and efficient service will preclude the necessity of having to take into consideration any possible unprofitable competitive quotation on stock not carrying the measure of dependability we are endeavoring to safeguard our customers with. We aim to fix the price list at a point that will allow a profit to us, and we aim to earn that profit by giving our customers the kind of trees and the kind of attention and service that will make their investment profitable beyond any doubt.

We have been progressing in the nursery business in California since 1888—thirty-three years—and it is our plan to continue permanently at our endeavor in the work we understand. We believe that Californians now realize as never before the added profit assured to the orchardist by added efficiency in the propagation of better trees, that will make better and more profitable orchards.

We call attention to our new plan of **GUARANTEE** that we now feel justified in issuing to our customers. See Center page.

**KIRKMAN NURSERIES, Inc.**

MAIN OFFICE, FRESNO, CAL.,  
Phone 353

San Francisco Office  
149 California Street  
Phone Garfield 3870

Other Official Representatives

Kirkman Nurseries, 401 ~~Phoenix Bldg.~~ San Francisco Cal., Phone Sutter 4371

Mr. W. T. Kirkman, Sr.,  
1075 Topeka St., Pasadena, Cal., Phone Colorado 4003  
L. P. Sorensen, 1616 26 St., Bakersfield, Cal., Phone 1817J

# ALMONDS

California alone in America must be relied on to produce the output of Almonds. Heavy importations are annually made to supply our deficiency in the American demand. While the measure of profit in Almond culture of the future depends largely on tariff regulations controlling importations from Southern Europe, still we are confident that good profit will be realized in any event where soils and climate are favorable to normal tonnage and quality.

Our Almond grower customers are planting largely of Nonpareil, using Drakes Seedling (about one-third) for pollinizing. In some localities the Ne Plus Ultra and I. X. L. are given considerable preference. The Texas Prolific is the best variety for avenue planting and is used to some extent in commercial orchard planting. We will gladly offer suggestions regarding varieties best to be planted in different localities on application.

Almond varieties are propagated on Bitter Almond and Peach Root. They are generally planted at twenty-four foot spaces, seventy-five trees to the acre.

Prices: 4 to 6 ft. .... \$400.00 per 1000  
 3 to 4 ft. .... 350.00 per 1000  
 2 to 3 ft. .... 300.00 per 1000



Two-Year-Old Almond Orchard, Fresno County

✓ **Drakes Seedling.** Well known variety and prized for its regular and heavy producing qualities. Valued also as a pollinizer. Nut medium size, roundish. Shell medium soft, kernel good size.

✓ **I. X. L.** One of the standard commercial varieties. Tree of upright growth. Nuts large and symmetrical. Shell soft, smooth. Kernel large and well filled.

✓ **Ne Plus Ultra.** Produces nuts of excellent quality. Nut long and narrow with thick soft shell. Tree of willowy or drooping habit.

✓ **Nonpareil.** Most popular paper shell variety. Tree is a vigorous grower, producing heavy crop

large well filled nuts. Kernel long and narrow, plump and of excellent quality.

✓ **Texas Prolific.** Valued as a pollinizer. Tree an upright vigorous grower and heavy producer. Nut medium size, soft, smooth and plump.

# APPLES

Our stock of Apples is limited to a few varieties, those being called for by California planters for commercial production. **Distances:** Twenty-four feet.

Prices: 4 to 6 ft. .... \$400.00 per 1000  
 3 to 4 ft. .... 350.00 per 1000  
 2 to 3 ft. .... 300.00 per 1000

✓ **Delicious.** As its name implies it is in reality a most delicious variety. The fruit is large, conical, brilliant red splashed with yellow, flesh fine grained, crisp, juicy and highly flavored. October to February.

✓ **Gravenstein.** One of the best autumn varieties. Fruit large, beautifully striped with red. Flesh tender, juicy, subacid. August and September.

✓ **White Winter Pearmain.** This popular variety is productive in all parts of the State. Medium size, oblong, pale greenish yellow with slight blush. Flesh yellowish, tender, crisp, juicy and of fine flavor.

✓ **Winesap.** A favorite winter market variety. Fruit medium, dark red, juicy, subacid. November to January.

✓ **Yellow Newton Pippin.** Considered one of our favorite winter sorts. Size medium. Skin greenish yellow, flesh yellowish, juicy, crisp, subacid and of delicious flavor. December to May.

## CRAB APPLES

✓ **Red Siberian.** Tree spreading grower producing its fruit in clusters of uniform size, skin blushed scarlet. September.

✓ **Transcendent.** Fruit large, golden yellow with red cheek. September.

✓ **Whitney.** An early fruiting variety. Fruit large, striped and splashed with carmine. Flesh is firm, juicy and of fine flavor. August.

✓ **Yellow Siberian.** An upright grower, producing large sized fruit. Amber colored and of fine flavor. September.



Two-Year-Old Kadota at Pasadena. W. T. Kirkman Sr. in Foreground



Three Hundred Thousand Yearling Fig Trees in Our Plant Near Edison, Kern Co. No Frost Injury Occurs Here.



# FIGS

No variety is interesting California Horticulturists more than the Fig. Apparently it is only a problem of more efficient methods of preparation of the matured product to create a market demand calling for many times more Figs than are now being produced.

Most spectacular in its popularity is the recently introduced Kadota, which is the most sought for to supply the greatly increasing demand for preserved, pickled and canned Figs.

**Distances:** Mission is planted thirty to forty feet apart, Adriatic and Calimyrna and Goodale thirty feet apart. Kadota and San Pedro are planted twenty to thirty feet apart usually, but it is recommended by some growers that they be planted even closer than twenty feet. The reason is that they start bearing early in life, and the tonnage is greatly increased during the first few years by planting more trees to the acre. Also, it is best to keep these varieties pruned back severely so that the crop can be picked fresh, without the use of long stepladders. Some Kadota plantings are being made at fifteen foot spaces. In those instances it is the plan to remove a portion of the trees in later years when they begin to crowd.

Prices:	4	to 6 ft.	.....	\$350.00	per 1000
	3	to 4 ft.	.....	300.00	per 1000
	2	to 3 ft.	.....	250.00	per 1000
	1½	to 2 ft.	.....	200.00	per 1000

Note: Kadota 10 cents per tree higher.

✓ **Black Mission.** A well known variety. Tree a regular and heavy producer. Fruit large of a deep violet color, thin skin. Flesh meaty, sweet and of high flavor. Does not sour easily. August.

✓ **Goodale Black.** This Fig is fruiting on the property of the Honora Realty Company at Lemon Cove, California. This strain of the California Black Mission as it is producing for Mr. Goodale is an unusually profitable variety. He markets the green fruit mainly in San Francisco and Los Angeles markets. Several producers of Figs have investigated this strain and pronounced it superior to the ordinary California Black Mission. It comes into bearing early in life and bears fruit larger than the average Mission.

✓ **Calimyrna.** A superior Fig of the Smyrna type. Fruit large, skin lemon yellow, pulp reddish amber, and of excellent quality when eaten fresh or dried. The fruit can only be perfected by the transmission of pollen from the Capri or Wild Fig through the agency of the Fig Wasp, *Blastophaga Grossorum*. Ripens from August to October.

✓ **Capri or Wild Figs.** These Figs serve as a home for the Fig Wasp, *Blastophaga Grossorum*. They produce three crops of fruit a year, thereby sustaining the life of the insect. The pollen from these figs carried by the Fig Wasp fertilizes the Smyrna type of Figs causing the fruit to develop and ripen. We have for this season's delivery the following varieties: Capri No. 1, Capri No. 2, Capri No. 3, Capri Milco and Capri Stanford.

✓ **Kadota.** The popular canning and pickling variety. Comes into bearing early and if planted close together a satisfactory income per acre can be realized the third year. Medium size, skin thin and yellow. Flesh yellow, rich and sweet. August to October.

✓ **White Adriatic.** Medium size, roundish. Skin thin, greenish yellow, pulp bright red. A regular and prolific bearer. The old standby for drying purposes. August to October.



Kadota Fig Tree, 18 Months Old, Defoliated to Show Setting of Fruit

✓ **San Pedro.** Tree not so vigorous or dense in foliage as the Black Mission. Fruit very large, violet black, red pulp. A profitable variety for fresh marketing, especially in southern California.

## APRICOTS

California has a monopoly on the production of Apricots for drying, canning and fresh shipping. The growing of Apricots has proven to be satisfactorily profitable year after year where proper selection of soil and climate is made. Some of the most unusual profits are recorded to the credit of Apricot orchards.

**Varieties:** The Prune and Apricot Growers' Association and the Cannery League were asked to meet with the Nurserymen's Bud Selection Association to determine as accurately as possible the varieties best to be grown in the several sections of the State producing Apricots. The consensus of opinion was substantially as follows:

For San Joaquin Valley, Tilton, with Blenheim a second choice.

For Sacramento Valley, Blenheim and Tilton.

For Coast localities, Blenheim.

In Southern California the

Royal is in greatest favor with the growers.

**Distances:** Twenty-two to twenty-four feet.

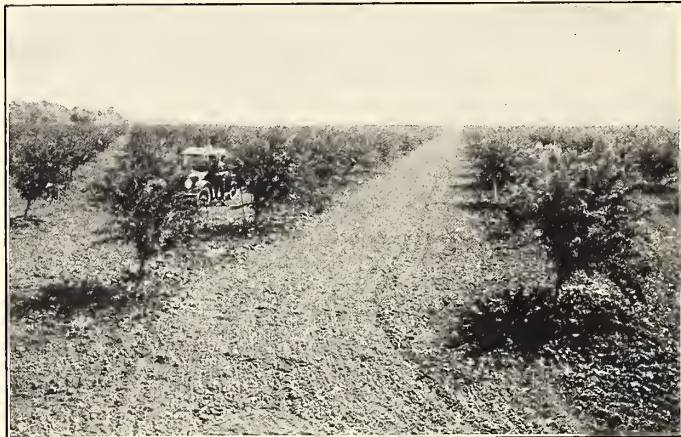
### PROPAGATED ON APRICOT, PEACH AND MYROBALAN ROOT

Prices: 4 to 6 ft. . . . . \$550.00 per 1000  
3 to 4 ft. . . . . 500.00 per 1000  
2 to 3 ft. . . . . 450.00 per 1000

**Blenheim.** Fruit large, oval. Flesh yellow rich and juicy. A standard variety suitable for canning, drying and marketing. Middle June.



Leveling and Subsoiling Outfit of Five Hundred Horse Power, Belonging to C. B. Hanner, Planada, Cal., Preparing Ground for Kirkman Trees.



Apricot Orchard on the Same Ground as Shown in Above Cut Eighteen Months Later.

**Royal.** Very similar to the Blenheim. Fruit is oval, skin yellow blushed, red on sunny side. It is firm and juicy with a rich vinous flavor. Early June.

**Tilton.** Fruit very large, somewhat flat in shape. Skin yellow blushed with red. Flesh yellow with a rich apricot flavor. For drying and canning it is unsurpassed. Middle of June.

**Darby Early Royal.** Ripens same time as Newcastle which is about ten days earlier than the Royal. Identical with the Royal in size, color, flavor and texture. A splendid shipping and canning variety. June 1st to 10th.

## NECTARINES

Not enough attention is accorded the Nectarine. It is a delicious fruit, a heavy and regular bearer, and in good demand for drying and fresh shipping purposes. Orchardists who have given them a place in their plantings are realizing good returns. **Distances:** Twenty to twenty-two feet apart.

Prices: 4 to 6 ft.....	\$500.00 per 1000
3 to 4 ft.....	450.00 per 1000
2 to 3 ft.....	300.00 per 1000

✓ **Gower.** A red Nectarine of recent introduction. On account of its firm flesh it is a fine shipping variety. Tree medium grower. Early July.

✓ **Stanwick.** Tree a medium grower and heavy producer. Fruit large with bright green skin shaded dark red. Flesh white, tender, juicy. Makes a superb dried product. August.

## OLIVES

Without doubt there will be a keen demand for Olive trees when the consuming public is convinced that the bacillus botulinus has been effectually prevented from lurking within the cans. Until such time we offer no suggestion, except that the well known value of the Olive as a food product will make Olive orchards profitable when the public is reassured. **Distances:** Twenty-four to thirty feet.

Prices: 4 to 6 ft.....	\$70.00 per 100
3 to 4 ft.....	60.00 per 100

✓ **Ascolano.** An Italian olive of large size exceeding the common varieties. The tree is strong spreading grower, fruit bluish black when fully ripe. It is packed and sold commercially as the "Queen Olive."

✓ **Manzanillo.** Considered by packers to be one of

the best pickling olives. Tree is a free grower and heavy and regular producer. Fruit is extensively packed green as well as ripe. Ripens about two weeks before the Mission.

✓ **Mission.** Fruit medium in size and makes an excellent pickle on account of its heavy oil content. Tree vigorous, upright grower and is highly suited for avenue or roadway planting.

## POMEGRANATES

During recent years there has been an increasing demand for the attractive "Wonderful" Pomegranate. It is being shipped to all markets with late Grape shipments. It is used extensively for border, and ornamental hedge planting. **Distance:** 12 ft.

Prices: 3 to 4 ft.....	\$300.00 per 1000
2 to 3 ft.....	250.00 per 1000
1½ to 2 ft.....	200.00 per 1000

✓ **Wonderful.** The most attractive variety. Large

size, colored a rich deep red and of excellent flavor. Valuable for shipping to the Eastern markets as the fruit is prized for table decorations. Can withstand some alkali.

## WALNUTS

Walnut culture is profitable in several sections of the State. We will, on request, offer suggestions as to varieties best adapted to different districts. It is advisable to interplant Walnut groves with varieties which come into bearing earlier. The interplants can be renewed after several years. **Distances:** Thirty-six to forty-eight feet.

Prices: 6 to 8 ft.....	\$175.00 per 100
4 to 6 ft.....	150.00 per 100
3 to 4 ft.....	125.00 per 100
2 to 3 ft.....	100.00 per 100

✓ **Eureka.** Tree is an upright, vigorous grower. Nuts large, elongated, soft shelled, smooth and tightly sealed. One of the best producing varieties and considered especially valuable on account of its late blooming period.

✓ **Franquette.** Tree a hardy and vigorous grower. Nuts large, long and smooth. Kernel full, sweet and having a rich nutty flavor. Thrives well in

the interior valleys and valuable as it is a late bloomer.

✓ **Mayette.** Nuts are large, well filled, rich and sweet. Should be planted with Franquette for cross pollenization. Tree hardy and a heavy bearer.

✓ **Placentia Perfection.** Popular and valuable for planting in Southern California. Produces fine large nuts of uniform size, kernels full and of excellent quality.



A Corner of the California Packing Corporation's Orchard, Merced County. Approx

## “True Trees”

Several years ago we felt that our exceptional record of delivering nursery stock true to label justified our advertising slogan “Kirkman’s True Trees.” We have recently been interested to note considerable plagiarism, and in order to assure our customers that we are not asking them to accept a mere slogan, nor to give credulity to bland and interesting fiction we offer the following GUARANTEE of genuineness.

We are willing to stand behind trees and vines we propagate to the extent of ten times their selling price.

This guarantee will be put into effect by issuing it in duplicate for signatures of buyer and seller.



ly Three Hundred Fifty Thousand Kirkman Trees Were Purchased for This Planting.

## Guarantee

**WARRANTY:** The seller hereby warrants that any and all trees, vines or plants sold on this order shall be true to name and warrants that if any of said stock shall at bearing prove not to be true to name that he will repay to the buyer within five years from the date of this order A SUM EQUAL TO TEN TIMES THE SELLING PRICE as stated in this order of all such nursery stock that shall prove not to be true to name. It is understood however that under this warranty the buyer will on completion of planting send notice to the seller, by registered mail, giving a clear description of the property planted in such nursery stock so purchased, the locations of the different varieties and will offer to indicate the location of such varieties on the ground. It is further understood that the seller shall have the right to go on the ground planted to the nursery stock hereby sold at any time within said five years to investigate the condition of said stock and shall have the right at any time during the first year to replace with the varieties sold any stock which the seller may find to be untrue to name, said stock, so replaced, to be without cost either as to selling or planting to the buyer. The seller agrees in view of the liberal provisions of this warranty to accept the same as full measure of damages and in liquidation of all damages sustained and to be sustained by reason of any of said stock proving to be untrue to name.

In the event the seller does not receive the notice and information as above stipulated within thirty days after completion of planting, or in case the value of this order is less than One Hundred Dollars the buyer agrees that the refund of only the purchase price of such trees or vines as may prove to be untrue to name shall be accepted as full liquidation of damages.

The buyer agrees that within five years from date hereof written notice shall be given to the seller in the event any trees delivered under this order may be untrue to name; and in the absence of such notice within the period of five years the seller is held free from any subsequent claim for damages.

# PEACHES

All indications point toward a supply of this fruit inadequate to meet the future demand, particularly in drying and canning varieties of Peaches. The larger canning concerns are offering long term contracts for Clings. The Peach and Fig Growers' Association anticipates a shortage of dried Peaches in the near future.

We are convinced that to plant Peaches in large acreages is the best recommendation that can be given to California orchardists at this time. There is no competition with California's output of dried and canned Peaches. The attention of planters has been directed more toward other varieties for several years. The shortage of supply, particularly in drying varieties, viz. Muir, Lovell and Elberta, is imminent. Plant them now. **Distances:** Twenty to twenty-two feet.



Canning Peach Orchard, Sutter County, Yielding Sixteen Tons per Acre. The Best Producing Trees in This Orchard Are Selected for Budwood

Prices: 4 to 6 ft. ....	\$400.00 per 1000
3 to 4 ft. ....	350.00 per 1000
2 to 3 ft. ....	300.00 per 1000

**Albright Cling.** A favorite among the growers in the Sacramento Valley originating near Placerville. The tree is a strong thrifty grower and a heavy producer. Fruit large, yellow with bright red cheek. One of the best of the Orange Cling type. First of August.

**Alexander.** Early fruiting variety. Fruit is medium to large. Skin greenish white, flesh white and juicy. First of June.

**Elberta.** A standard and well known Freestone. Fruit very large, skin yellow with mottled cheek. Flesh yellow, fine grained, juicy, sweet and of high quality. One of the best varieties for canning, drying and shipping. Last of July.

**Florence.** Originated by Mr. Millard Sharpe of Vacaville, Cal. Large, round, skin bright red, flesh whitish yellow, clings to the pit. Ripens last of May.

**Foster.** Large, skin deep orange red, becoming very dark red on sunny side. Flesh yellow, rich, juicy with subacid flavor. Good for shipping, drying and canning. Middle July.

**Indian Blood.** Valued for preserving and pickling. Medium size, flesh streaked and blotched with red. September.

**J. H. Hale.** A new valuable freestone and one of the Elberta type. Fruit is large, skin yellow blushes with red. Flesh yellow, tender, juicy and of fine flavor. A superb table and shipping variety. August.

**Libbee Cling.** Tree a strong robust grower and heavy producer. Ripens usually about three weeks later than Tuscan Cling. Fruit large, skin yellow, blushed slightly, flesh yellow, firm, juicy and of high quality. August.

**Lovell.** A popular freestone variety used principally for drying and canning. Skin and flesh yellow, firm and of good quality. Ripens about ten days later than Muir. August.

**McDevitt Cling.** A variety of the Orange Cling type. Fruit very large, golden yellow blushed deep red when fully ripe. Flesh yellow, firm and of excellent flavor. A fine shipper. August.

**McKevitt Cling.** Flesh white, firm, rich, sugary and highly flavored. White to the pit. Excellent for canning and shipping. Considered a better peach than the Heath. Early September.

**Muir.** The popular drying peach in California. Fruit medium size and a perfect freestone. It is particularly adapted to drying on account of its sweetness and density of flesh. August.

**Peak Cling.** In size and shape it resembles the Phillip Cling and it is valued by the canners as it ripens between the Tuscan and Phillips. The fruit is firm and clear yellow to the pit, making a very desirable variety for commercial canning. August.

**Paloro Cling.** A seedling originated at Gilroy, California, some ten years ago. A fine large yellow cling; flesh clear yellow to the pit; pit small and round, without spike; flesh of firm texture; fine grained and of excellent quality. Paloro and Peak's Cling are, by canners, being given the preference over Hauss and Johnson for the period immediately following Tuscan. Very productive and of equal canning quality to the Phillips. July 27th to August 10th.

**Phillips Cling.** A deservedly popular canning variety and is considered the best of all the Clingstones. Fruit large, flesh yellow to the pit, firm and clear. Does not rag the syrup. Early September.

**Sellers Orange Cling.** Very large, yellow with dark red cheek, flesh deep yellow, firm and juicy. Middle of August.

**Sims Cling.** Medium to large. Skin golden yellow with faint blush. Flesh yellow with fine texture, firm and rich. Pit small. Middle of August.

**Tuscan Cling.** The earliest of all the popular canning Clingstone varieties. Large, yellow, texture fine, firm and juicy. Middle of July.

**West Late Free.** A fine quality peach ripening first to middle of October. Valuable for local markets for retail trade.

**Yellow St. John.** Fruit medium to large. Skin yellow with red cheek. Flesh yellow, sweet and of a delicious flavor. Last of June.



Yearling Peach Trees Ready for Delivery. For Thirty-three Years Our Special Attention Has Been Given to Propagation of Approved Varieties of the Peach.

# PLUMS AND PRUNES

The average returns gotten for shipping Plums are so satisfactory that considerable new planting is amply justified.

The California Sweet Dried Prune is the world's standard. The Prune and Apricot Growers' Association in conference with the Nurserymen's Bud Selection Association has recommended that to supply the demand made on it for California Prunes it is best to plant 85% French, 5% Robe de Sargent, 5% Imperial and 5% Sugar.

No other Prune equals in quality the French (Petite Prune d'Agen), and it is especially recommended that care be used to propagate from parent trees bearing the best size prune; but Petite d'Agen it must be.

Various "improved" French Prunes under several trade names have been promoted. Our investigations have not convinced us that we would be serving our customers best to propagate other than the best possible strain of the true Petite d'Agen. The budwood used has been taken by Mr. Millard Sharpe, probably California's most practical authority on Prune varieties, from the Turner strain of Susuin. Until more progress is made in bona fide selection work in Prunes, we are confident that no better strain is being propagated, and certainly none more certain to yield regularly.

Beware of an untried new strain of Prunes. It may not bear in your locality in profitable quantities. Many reports of shy bearing are heard in connection with some exploited strains. A good plan would be to interplant at least one-half of the reliable Petite d'Agen in any planting of new "Superior" French Prunes. In this way the new thriller will have the advantage of cross pollination to aid its bearing, and in any event the grower will have an assured production from half his trees. Prunes and Plums propagated on Myrobalan, Peach and Almond Roots. **Distances:** Twenty-two to twenty-four feet.



Budwood Is Selected From Best Individual Trees of French Prune. Above Cut Shows the Difference in Average Sizes From Different Trees in Same Orchard. Both are True Petite d' Agen

Prices: 6 to 8 ft.....	\$450.00 per 1000
4 to 6 ft.....	400.00 per 1000
3 to 4 ft.....	350.00 per 1000
2 to 3 ft.....	300.00 per 1000

Note: On Myrobalan Root 5c. per tree additional.

**Anita.** A seedling of the Tragedy. Fruit very large, oblong. Skin purple with blue bloom. Flesh yellow, freestone. A fine shipping and drying variety. Last of July.

**Beauty.** Heart shaped, crimson, flesh yellow, streaked red, firm and juicy, and of fine flavor. One of the best early shippers. Ripening ten days earlier than Santa Rosa. June.

**Becky Smith.** Originated by Mr. Millard Sharpe at Vacaville, California. Fruit is very large.

Skin bright red, texture firm, flesh yellow, high flavor. Pit small, freestone. Last of August.

**Burbank.** Medium size, globular skin, cherry red, flesh yellow, juicy, sweet when fully ripe. Last of June.

**Climax.** On account of its extreme earliness, size, color and delicious flavor it is considered the best early shipper. Fruit heart-shaped, deep red skin flesh yellow. Middle of June.

**California Blue.** Fruit large. Skin deep purple, flesh yellow, firm and fine quality. Excellent shipper. Ripens last of June.





Making Prune Selections. Left to Right: Chas. B. Weeks, Gilroy; Millard Sharpe, Vacaville; Joe Chadburn, Suisun



Santa Rosa Plum Orchard, Madera Co. The Owner Received \$1000 per Acre for the Fruit the Seventh Year.

- ✓ **Damson.** Tree strong and heavy producer. Fruit small, oval, skin dark purple, flesh deep yellow, juicy with acid flavor. A favorite for making jellies. August.
- ✓ **Diamond.** Fruit very large, oblong, dark purple. Flesh yellow and of high quality. Makes a splendid shipper. Last of July.
- ✓ **Duarte.** Tree an upright grower. Fruit large and conical. Resembles Satsuma as skin and flesh are red. The earliest blood plum on the market. July.
- Florence.** The largest known European Plum. Fruit is very large and round. Skin purple, flesh yellow, fine grained, spicy flavor and very sweet. Freestone ripens middle of July.
- French (Petite Prune d'Agen).** More extensively planted than any other variety of Prune. Medium size, violet purple, flesh rich, sweet and meaty. August to September.
- ✓ **Gaviota.** Fruit large. Skin deep red, flesh yellow, fragrant and sweet. Pit very small. Late July.
- ✓ **Grand Duke.** Tree a prolific bearer. Fruit very large, oval. Skin dark purple, flesh greenish yellow with rich plum flavor. Makes a fine shipper. Late August.
- ✓ **Hungarian.** The tree is a strong, vigorous grower and heavy producer. Fruit very large, reddish violet, juicy sweet. A fine variety for shipping fresh. August.
- ✓ **Imperial Epineuse.** Tree a strong thrifty grower and heavy producer of fine large oval-shaped fruits. Skin purple. Flesh greenish yellow, very sweet. A very profitable variety in localities when it has proven to be a regular bearer. Last of August.
- ✓ **Italian.** A popular variety in Oregon and northern California. Fruit dark purple, tart flavor, flesh greenish yellow, freestone. Makes a fine dried fruit. August.
- ✓ **Kelsey.** Very large, heart-shaped, greenish yellow, overspread with light red. Flesh yellow, firm, clings slightly to the pit. A valuable shipper. July to September.
- President.** Fruit uniform in size, large and oval. Skin purple, flesh yellow and of firm texture. A fine market and shipping variety. September.
- ✓ **Robe de Sargent.** Fruit medium to large oval, skin deep purple, flesh greenish yellow, sugary, rich and delicious. Valued for drying and shipping. Must be interplanted with French for pollenizing. August and September.
- ✓ **Santa Rosa.** Introduced by Mr. Luther Burbank of Santa Rosa. Very large, deep crimson, covered with pale blue bloom, flesh yellow, mottled and streaked with crimson, juicy and highly flavored, pit small. A valuable shipper. Early July.
- ✓ **Sugar.** Fruit very large, skin dark purple, flesh yellow, tender. Late July.
- ✓ **Tragedy.** Medium size, purple, flesh yellowish green, rich and sweet. Very heavy producer. A favorite early shipper. Late June.
- ✓ **Washington.** Strong grower and heavy producer. Fruit is large, round, skin greenish yellow with faint blush on sunny side. A popular canning variety. Last of August.
- ✓ **Wickson.** Fruit heart-shaped, flesh yellow, juicy. Tree a strong upright grower. Early August.
- ✓ **Yellow Egg.** A favorite and well known canning variety. Fruit large, oval, deep golden yellow, juicy and rather acid. July.
- Wilma.** Originated by Mr. Millard Sharpe of Vacaville, California. Tree a thrifty grower. Fruit medium to large, roundish, skin purple with blue bloom, flesh yellow, juicy and sweet. August 1st.

## PEARS

California has little competition in the production of high class Pears. There are few varieties grown that average as profitable to the grower as Pears where the soil and climate are suitable. **Distances:** Twenty feet.

Prices:	6 to 8 ft.....	\$450.00 per 1000
	4 to 6 ft.....	400.00 per 1000
	3 to 4 ft.....	350.00 per 1000
	2 to 3 ft.....	300.00 per 1000

- ✓ **Bartlett.** Large size, skin yellow, blushes next to the sun. Flesh buttery, juicy and highly flavored. The standard California pear for fresh shipping and canning. Probably 90% of the pears grown in the State are Bartlett. August.
- ✓ **Beurre Bosc.** Fruit large pyriform; skin smooth, dark yellow, covered with dots and streaks of russet, slightly red on sunny side. Flesh white tender and delicious. September.
- ✓ **Beurre de Anjou.** A fine large Pear, buttery and melting with a sprightly vinous flavor. October.
- ✓ **Doyenne du Comice.** Fruit large, skin greenish yellow, shaded crimson in sun, flesh buttery, rich and aromatic. October.
- ✓ **Winter Nelis.** Size medium, yellowish green and russeted. Fine grained, melting, rich and delicate flavor. A splendid winter Pear. December.

# GRAPES

Interest in Viticulture in California is strongly increasing. Satisfactory average returns are being realized by growers of both Table and Raisin Grapes. In shipping varieties the Malaga is most uniformly profitable, with Emperor and Tokay holding important positions. In Raisin varieties the Thompson has the greatest future. There is also a demand for the Muscat and the Sultana in the Raisin industry; but the efforts of the Raisin Association have shown very gratifying results in the increased marketing possibilities of the Thompson in particular. We are propagating varieties used for table, shipping and drying purposes only. **Distances:** twelve by six, seven and eight.

Price: .....\$45.00 per 1000

**Black Cornichon.** One of the choice table and shipping Grapes. Vine a strong, vigorous grower and heavy producer. Berries are dark purple when fully ripe and oblong in shape, flesh firm with good flavor. October.

**Emperor.** Vine a strong, rampant grower. Bunches are large, long, loose and sometimes shouldered. Berries large, oblate, deep rose to purple. It is particularly adapted for packing in kegs with redwood sawdust and on account of its thick skin and meaty flesh is a splendid shipper. Best late variety. October.

**Flame Tokay.** In the interior valleys it attains its highest state of perfection. The bunches are large and somewhat loose. Berries large, oblong and when ripening assume a brilliant red coloring that make them so attractive and remunerative in the Eastern market. One of the staple shipping varieties. September.

**Fresno Beauty.** Possibly the largest black grape on the market. The bunches are large, loose and quite long, flesh firm, crackling with a pleasant vinous flavor. October and November.

**Malaga.** On account of its shipping qualities this white grape is the most extensively grown shipping variety in this State. It readily adapts itself to a wide range of soils. The vine is a strong grower and heavy producer. Bunches are very large, berries oval, yellowish green, skin thick, fleshy. When dried makes a fair raisin. August.

**Muscat.** The well known raisin grape. Bunches are long, loose shouldered, berries oval, sometimes round, skin yellowish green. When fully ripe makes a fine table variety, flavor strong and characteristic. September.

**Sultana.** Berries small, round, firm and crisp and somewhat tart. Bunches large and long. Vine a vigorous grower and very productive. Particularly adapted to light sandy soils. August.

**Thompson Seedless.** The well known seedless raisin grape. Bunches large, long and often shouldered, berries are oval, greenish yellow and larger than Sultana, thin skin and of good flavor. The vine is a rampant grower and an unusually heavy bearer. Adapts itself to a wide range of soils including that which is somewhat impregnated with alkali. August.



No. 1 Thompson Seedless Rootings



Main Office, Kirkman Nurseries, Fresno, Cal.

**PRICE LIST. SEASON 1921-22**

**Almond on Almond and Peach**

**Peaches, all varieties**

No. ft. high	Each	Per 10	Per 100	Per 1000
4/6	\$0.85	\$5.50	\$45.00	\$400.00
3/4	.70	5.00	40.00	350.00
2/3	.65	4.50	35.00	300.00

**Apricot on Apricot, Myro and Peach**

4/6	.90	7.00	60.00	550.00
3/4	.85	6.50	55.00	500.00
2/3	.80	6.00	50.00	450.00

**Apples**

**Plums on Peach**

**Prunes on Almond and Peach**

**Pears on Jap Root**

6/8	.80	6.00	50.00	450.00
4/6	.75	5.50	45.00	400.00
3/4	.60	5.00	40.00	350.00
2/3	.55	4.50	35.00	300.00

**Plums and Prunes on Myro**

6/8	.85	6.50	55.00	500.00
4/6	.80	6.00	50.00	450.00
3/4	.75	5.50	45.00	400.00
2/3	.70	5.00	40.00	350.00

**Figs, except Capri and Kadota Varieties**

4/6	.70	5.00	40.00	350.00
3/4	.65	4.50	35.00	300.00
2/3	.60	4.00	30.00	250.00

(Capri trees are 5c per tree higher than the above)

(Kadota trees are 10c per tree higher than the above)

**Grapes**

.25	1.50	6.00	45.00
-----	------	------	-------

**Nectarines**

4/6	.85	6.50	55.00	500.00
3/4	.80	6.00	50.00	450.00
2/3	.75	5.50	45.00	400.00

**Olives**

No. ft. high	Each	Per 10	Per 100	Per 1000
1" and up....	\$1.50	\$12.50	\$100.00	
3/4 to 1"....	1.25	10.00	90.00	
5/8 to 3/4"....	1.10	9.00	80.00	
1/2 to 5/8"....	1.00	8.00	70.00	
5/8 to 1/2"....	.90	7.00	60.00	

**Walnut on Black**

6/8	\$2.00	\$18.50	\$175.00
4/6	1.75	16.00	150.00
3/4	1.50	13.50	125.00
2/3	1.25	11.00	100.00

**Pomegranates**

3/4	\$0.65	\$4.50	\$35.00	\$300.00
2/3	.60	4.00	30.00	250.00
1 1/2/2	.50	3.50	25.00	200.00

Five trees of a variety will be supplied at the 10 rate, 50 trees and over at the 100 rate, 300 trees and over at the 1000 rate.

**NUMBER OF TREES OR PLANTS TO AN ACRE**

1 ft. apart each way, No. plants.....	Method Square	Method Triangle Equilateral
43,560		50,300
10,890		12,375
4,840		5,889
2,722		3,130
1,742		2,011
1,210		1,397
807		928
680		785
537		620
435		502
302		348
222		256
193		222
170		195
134		154
109		125
90		104
75		86
69		79
48		55
35		40
40		31
27		21
18		14



