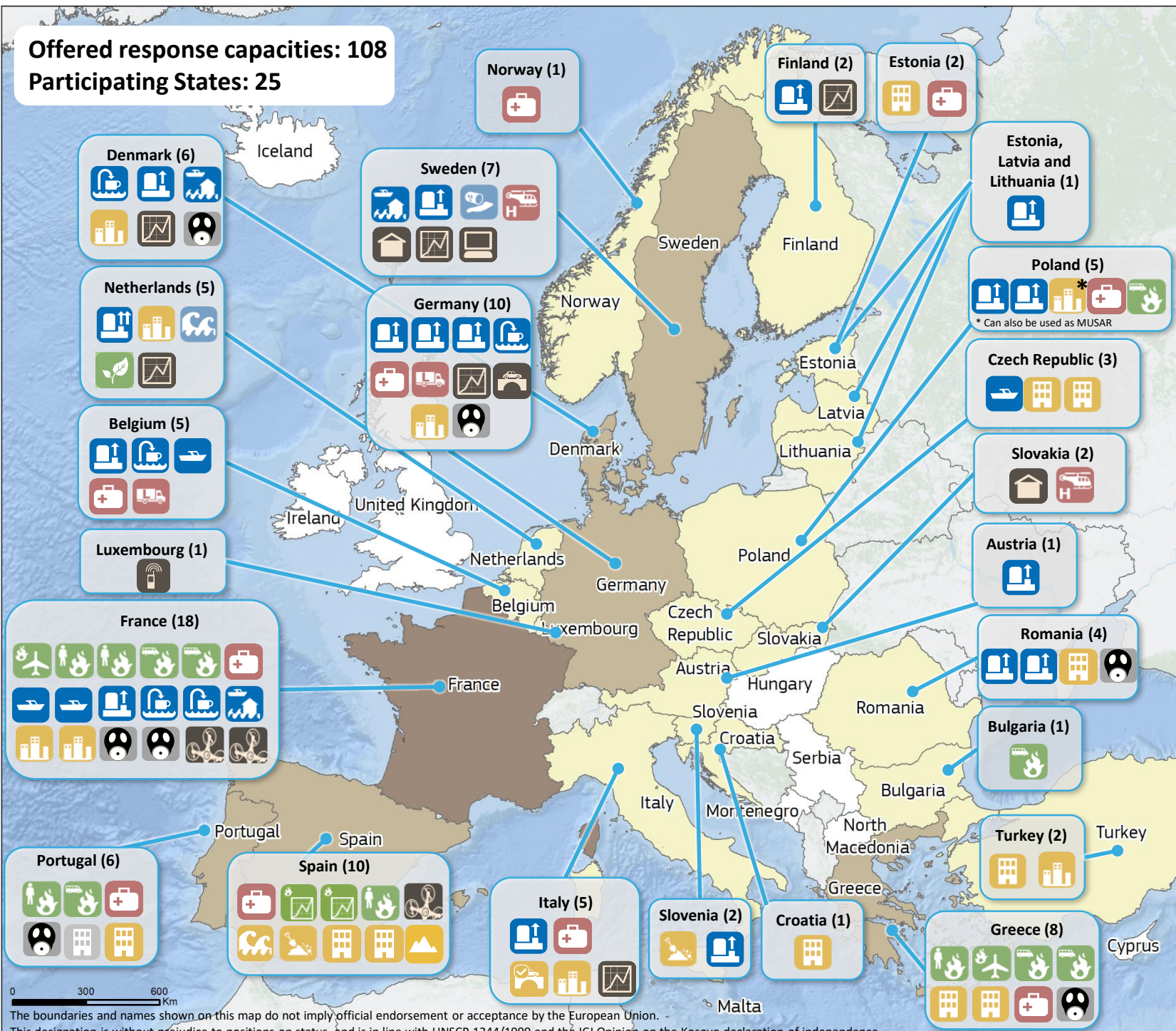


Offered response capacities: 108
Participating States: 25



Response Capacities			
Flood Rescue with Boats		Marine Pollution Capacities	
High Capacity Pumping		Environmental Assessment Unit	
Water Purification		Forest Fire Fighting with Planes	
Flood Containment		Ground Forest Fire Fighting	
Extreme High Capacity Pumping		Ground Forest Fire Fighting with Vehicles	
Medium Urban Search and Rescue		Team for firefighting advisory/assessment	
Cave Search and Rescue		CBRN Detection and Sampling	
Heavy Urban Search and Rescue		CBRN Decontamination	
Structural Assessment Capacity		Search and Rescue in CBRN conditions	
Team for mountain search and rescue (MSAR)		Standing Engineering Capacity	
Team for water search and rescue (WSAR)		Technical Assistance and Support Team (TAST)	
Mobile Lab		ICT Help Desk (TAST)	
Medical Air Evacuation		Team with unmanned aerial vehicles	
Emergency Medical Team		Shelter Capacities	
Maritime Incident Response Group		Communication Platforms	

The **European Civil Protection Pool**, commonly referred to as “the pool”, consists of a range of emergency response capacities that countries participating in the **EU Civil Protection Mechanism** make available for EU emergency response operations. Since the establishment of the pool in October 2014, 25 Participating States have brought together 108 civil protection capacities which are now available (or will eventually become available) for EU operations worldwide, following a request for assistance through the European Commission's Emergency Response Coordination Centre.



The boundaries and names shown on this map do not imply official endorsement or acceptance by the European Union. This designation is without prejudice to positions on status, and is in line with UNSCR 1244/1999 and the ICJ Opinion on the Kosovo declaration of independence

Copyright, European Union, 2020. Map created by DG ECHO A.3. Situational Awareness Team. Sources: DG ECHO, ESRI, OCHA.