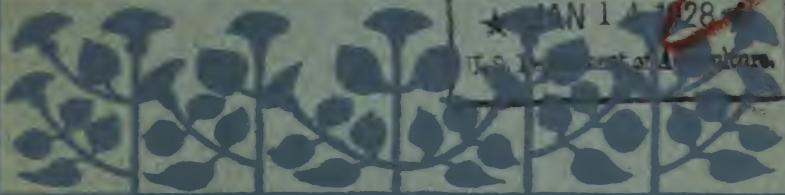


Historic, Archive Document

Do not assume content reflects current scientific knowledge, policies, or practices.

62-57

LIBRARY
★ JAN 14 1928
U.S. DEPARTMENT OF AGRICULTURE

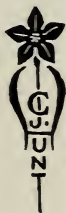


THE BLUE BOOK OF FLOWER SEEDS

1928

CHESTER JAY HUNT, INC.
LITTLE FALLS NEW JERSEY

The BLUE BOOK
of
FLOWER SEEDS
and GLADIOLI



1928

CHESTER JAY HUNT INC.

Mayfair

LITTLE FALLS NEW JERSEY





A LIST OF ENGLISH FLOWER SEEDS FROM THE HOME OF GARDENS



THE selection of English flower seeds which we offer for the current season has been increased both by including many things which our friends have asked us to supply and by the addition of a number of novel or unusual kinds which we have been able to secure from the specialists in England. It is remarkable how keen a sense the English gardener has for what is especially fine, and how carefully the growers there maintain the splendid strains which have made English gardens so famously beautiful.

Of these specialties we have unusually complete lists of varieties, and we wish to call attention to our offerings in the Antirrhinums, Aquilegias, Delphiniums, Lupins, Poppies, and Zinnias.

The new arrangement of our catalogue separates the Annuals from the Perennials, adding besides a collection of seeds for the rock-garden. This last will prove most interesting to those who enjoy the kind of plant that the rock-garden requires and will, we hope, make many converts to this delightful way of making a garden.

We have greatly enlarged our list of varieties of Gladioli and can recommend it as containing only the choicest of standard or novel kinds.

For our customers we have prepared a leaflet giving detailed directions of how to sow seeds. It will be enclosed with each order when shipped.

*From Mayfair
January 10th, 1928*

Chester Jay Hunt

President

CHESTER JAY HUNT INC.



HOW TO ORDER AND OUR GUARANTEE



Full Cultural Directions will be enclosed with the seeds when shipment is made.

Do not forget—

- that** seeds should never be sown deeper than four times their own diameter;
- that** the soil must not be packed so hard that the seedlings cannot break through the surface;
- that** heavy rains frequently wash out the seeds;
- that** ants are very fond of certain seeds and will sometimes carry off all that you have sown;
- that** often the strongest seedlings will produce inferior types of bloom; therefore, save the more delicate looking plants;
- that** lack of ventilation will surely cause "damping-off."

Please Order by number as given in our lists. Because rather detailed bookkeeping is incidental to every charge account, and because orders for seeds are generally of moderate value, payment in advance is requested on orders from this catalogue. **No charge accounts will be entered for orders under five dollars.** No charge will be made for delivery of seeds. For bulbs and implements add postage to your remittance.

WE GUARANTEE that satisfactory results will be obtained from our seeds if the cultural directions enclosed with each order are followed in every detail. If purchasers of our seeds will assure us that they have done so, we will gladly replace any seeds that have failed to germinate.



SEEDS OF ANNUALS



THIS class of plants includes those which flower the same season from seed. In general, they are easily grown and are valuable for filling vacant places in the hardy border, for planting out in beds to follow spring bulbs, or to give abundant bloom in any part of the garden where an attractive display may be desired.

In this section we have also listed types which, though strictly perennial in warm climates, are either killed by frost or produce their best bloom the first year.

On the back of each of our seed packets will be found a number corresponding to the special requirements noted in our leaflet on the sowing of seeds.

Ageratum

Decorative little plants for bedding, edging, or pots.

- 1 **Little Blue Star.** Miniature bushes covered with clusters of flowers opening light blue with purple center and developing to soft lavender-blue. 6 in. Pkt. 15 cts.
- 2 **Golden River.** Flowers deep primrose; a very scarce novelty. Pkt. 20 cts.

Alyssum (See perennials also)

Valuable plants for edging or for rock-work.

- 5 **Maritimum, Little Dorrit.** Forms perfect little bushes covered with snowy white, fragrant flowers. 4 in. Pkt. 15 cts.; oz. \$1.20.
- 6 **Maritimum, Snow Carpet.** Forms dwarf, spreading masses of fragrant white flowers. 3 in. Pkt. 15 cts.; oz. 75 cts.

Anchusa (See perennials also)

- 8 **Annual Blue.** Slender stems with intense blue flowers, resembling the perennial varieties but more delicate. 18 in. Pkt. 15 cts.

Antirrhinum

Snapdragon

For gorgeous coloring, few flowers can match these Snapdragons. The tall and intermediate varieties should be freely used in flower beds and borders, where they produce a most brilliant show from early summer to late autumn. The intermediate varieties are especially useful as bedding plants to follow Tulips. Raised in a cold frame in the spring, or sown in a well-prepared seed-bed and planted out, they bloom profusely during the summer and autumn. About 80% of the seedlings come true to color.



Intermediate or Semi-Dwarf Section

These grow to an average height of 18 to 20 inches.

- 10 **Bonny Lass.** Pretty rose-pink with white throat. Pkt. 20 cts.
- 11 **Captivation.** Soft buff, shaded pink and yellow. Pkt. 20 cts.
- 12 **Charm.** Rich, glowing rose; a large-flowered variety of brilliant color, which promises to be the best pink in its class. Pkt. 20 cts.
- 13 **Coral Pink.** Bright coral-rose with white throat; a clear vivid color. Pkt. 20 cts.
- 14 **Elegance.** Rosy lilac with blush lip and white throat. Pkt. 20 cts.
- 15 **Enchantress.** A very beautiful variety with large shell-pink flowers; plant of fine bushy habit. Pkt. 20 cts.
- 16 **Fascination.** Soft, pale rose; a large, beautiful flower in the softer tones. Pkt. 20 cts.
- 17 **Fireflame.** A most brilliantly colored variety with fiery orange-scarlet flowers. Pkt. 25 cts.
- 19 **Gloria.** Deep rose, with large, fringed petals. Pkt. 20 cts.
- 21 **Golden Monarch.** Primrose and yellow flowers on good spike. Pkt. 20 cts.
- 22 **Golden Morn.** Apricot and rose, blended beautifully with yellow. Pkt. 15 cts.
- 24 **Maize Queen.** Rosy buff, with yellow lip and rose-colored throat. Pkt. 20 cts.
- 25 **Mauve Beauty.** Large, rosy mauve flowers, with silvery white lip; a pure orchid-lavender and beautiful in combination with pink or pale yellow varieties. Pkt. 20 cts.
- 26 **Melody.** Lovely, pale salmon-pink, with yellow center; of ideal habit, producing an enormous number of flower spikes blooming at the same time. Pkt. 25 cts.
- 27 **Orange Queen.** Terra-cotta pink with golden center and pale orange lip. Pkt. 20 cts.
- 28 **Peace.** Delicate shell-pink; especially beautiful planted with the other rose tones. Pkt. 20 cts.
- 29 **Prima Donna.** A beautiful combination of pink, yellow and salmon; fine spike and a most attractive flower. Pkt. 20 cts.
- 30 **Purity.** Glistening white flowers; good habit and erect spikes. Pkt. 20 cts.
- 31 **Radiance.** Rich vivid salmon; a new and very showy variety beautiful combined with the pale pinks. Pkt. 30 cts.
- 32 **Red Emperor.** Rich deep scarlet; the finest red yet introduced. This is an unusual color in Antirrhinums. Pkt. 25 cts.
- 33 **Sunset.** Orange-scarlet, shaded rose and gold; wonderfully effective when seen in a mass. Pkt. 25 cts.
- 34 **Victory.** Rich terra-cotta, shaded yellow; the largest flowered Snapdragon in this class. Pkt. 20 cts.



- 36 **Yellow Beauty.** Fine, rich yellow. Pkt. 20 cts.
39 **Mayfair Mixture.** Including a wide range of colors and many of the newest types in this section. The soft art shades in this mixture will delight the most critical gardener. Pkt. 15 cts.

Tall Large-Flowered Section

These grow to a height of 2 to 3 feet.

- 40 **Fairy Queen.** Rose, with white lip. Pkt. 20 cts.
41 **Maralda.** Fine coppery carmine. Pkt. 25 cts.
42 **Peachblow.** Soft old rose, shaded yellow. Pkt. 20 cts.
43 **Princess Patricia.** Large, pale rose flowers, shaded primrose. Pkt. 25 cts.
44 **Queen Victoria.** Pure glistening white; a very large, fine flower. Pkt. 20 cts.
46 **Torchlight.** Very large, orange-scarlet flowers with orange throat, shaded pink. Pkt. 25 cts.
47 **Venus.** Lovely self-rose, with white throat. Pkt. 20 cts.
48 **Yellow King.** Fine deep yellow; very large flowers on strong stem. Pkt. 20 cts.
50 **Mayfair Mixture.** An extra-fine strain of choice varieties in the newest kinds and finest colors. Pkt. 15 cts.

Arctotis

- 52 **Grandis.** Daisy-like white flowers, with lavender disc around the small yellow center; valuable for borders and for cutting; closes at night. 2 ft. Pkt. 15 cts.

Aster (See perennials also)

New Large-Flowered Double

A strain producing flowers of a somewhat fuller form than the Comet Asters.

- 54 **Azure Glory.** Delicate azure-blue. Pkt. 20 cts.
55 **Pink Glory.** Shell-pink. Pkt. 20 cts.
56 **Purple Glory.** Rich purple. Pkt. 20 cts.
57 **Rose Glory.** Bright rose. Pkt. 20 cts.
58 **White Glory.** Pure white. Pkt. 20 cts.

Crego or Giant Comet

A strain of Chrysanthemum-like flowers of shaggy form.

- 60 **Azure-Blue.** Pkt. 15 cts.
61 **Lavender-Pink.** Pkt. 15 cts.
62 **Purple.** Pkt. 15 cts.
64 **Rose.** Pkt. 15 cts.
65 **Shell-Pink.** Pkt. 15 cts.



- 66 **White.** Pkt. 15 cts.
68 **Mayfair Mixture.** Pkt. 15 cts.

Late Branching

Full-formed flowers on plants of freely branching habit, flowering in September.

- 70 **Light Blue.** Pkt. 15 cts.
71 **Purple.** Pkt. 15 cts.
72 **Rose-Pink.** Pkt. 15 cts.
73 **Shell-Pink.** Pkt. 15 cts.
74 **White.** Pkt. 15 cts.
76 **Mayfair Mixture.** Pkt. 15 cts.

Single Asters

The single types are beautiful for bedding or for cutting. They have long stems and the yellow center, contrasting with the variously shaded petals, makes them very effective and decorative.

- 78 **Sinensis, Lavender.** Pkt. 15 cts.
79 **Sinensis, Pink.** Pkt. 15 cts.
80 **Sinensis, White.** Pkt. 15 cts.
82 **Sinensis, Mayfair mixture.** Pkt. 15 cts.
84 **Beauty.** A beautiful type of the Single Asters. Mixed colors. Pkt. 20 cts.

Balsam

An old-fashioned favorite. Makes a rather prim border plant which withstands dry weather and heavy rains. Thrives in shaded situations.

- 85 **Mayfair Mixture.** Camellia-like flowers in various colors. Pkt. 15 cts.

Calendula

Showy annuals for flower-beds or for cutting. A good ground cover for bulb-beds, growing about 15 inches in height.

- 87 **Orange King.** Large flowers of an intense, glowing orange. Pkt. 15 cts.
88 **Sulphur Queen.** Pale sulphur. Pkt. 15 cts.
90 **Mayfair Mixture.** All shades of yellow and orange. Pkt. 15 cts.

Candytuft (See perennials also)

Producing fragrant heads of soft colored flowers. They soon bloom profusely from seed and continue in bloom for a long time. For edgings and for rock-gardens they are admirably adapted, shading from the most delicate lavender and pink to deep purple and rose.



- 91 **Dunnettii**. Rich dark crimson. 1 ft. Pkt. 15 cts.
92 **Lilac**. Soft lavender. Pkt. 15 cts.
93 **Rose Beauty**. Pretty bright rose. 1 ft. Pkt. 15 cts.
94 **Rosy Dawn**. White, shading to rose; very beautiful. 1 ft. Pkt. 15 cts.
96 **Snow King**. Pure white, producing large heads of flowers; a splendid border plant. Pkt. 15 cts.
97 **Mayfair Mixture**. Beautiful new hybrids; this is a wonderful mixture of most attractive colors, and will be found most effective. Pkt. 15 cts.

Celosia

Feathered Cockscomb

Decorative plants of great value where a mass of vivid color is needed.

- 98 **Improved Feathered**. A splendid strain, forming pyramidal bushes covered with feathery plumes of yellow, scarlet, salmon, etc. 1½ ft. Pkt. 15 cts.
100 **Scarlet Plume**. Handsome, feathery plumes in all shades of red and crimson; very brilliant. 1½ ft. Pkt. 40 cts.

Centaurea

(See perennials also) Cornflower and Sweet Sultan

Very valuable annuals for cutting and for borders. They are very easily grown from seed.

- 101 **Cyanus, Blue King**. Deep blue. 3 ft. Pkt. 15 cts.
102 **Cyanus, Double, Silver Queen**. Double white flowers, highly appreciated for cutting. 2 ft. Pkt. 25 cts.
103 **Cyanus, Mayfair Mixture**. All colors. Pkt. 15 cts.
104 **Imperialis, Mayfair Mixture**. Very large flowers, sweet-scented. Pkt. 15 cts.

Chrysanthemum (See perennials also)

These annual Chrysanthemums are very valuable for the garden and for cutting. They bloom until frost and thrive under trying conditions.

- 105 **Carinatum, New Double Hybrids**. Flowers white, rose, orange, crimson and other beautiful colors. Pkt. 15 cts.
106 **Coronarium, Mayfair Mixture**. Various shades of yellow and primrose. 2 ft. Pkt. 15 cts.

Clarkia

Little-known annuals, very effective in the border, bearing a profusion of long spikes of double and semi-double flowers. Very beautiful for cutting.

- 109 **Brilliant**. Brilliant cherry-rose. 2 ft. Pkt. 15 cts.
110 **Orange King**. Orange-scarlet, very showy. 2 ft. Pkt. 15 cts.
111 **Rose Beauty**. Deep rose-pink. 2 ft. Pkt. 15 cts.



- 112 **Salmon Queen.** Salmon-rose, shaded white. 2 ft. Pkt. 15 cts.
114 **Scarlet Queen.** Salmon-orange, developing to a brilliant scarlet. 2 ft. Pkt. 15 cts.
116 **Mayfair Mixture.** Pkt. 15 cts.

Coreopsis (See perennials also) Calliopsis

Easily grown border plants, also useful for cutting. They will grow under almost any conditions.

- 118 **The Garnet.** A very showy hybrid, forming bushes 2 to 3 feet across, covered with crimson flowers. 1½ ft. Pkt. 15 cts.
119 **Mayfair Mixture.** Yellow and red shades mixed. Pkt. 15 cts.

Cosmos

Showy annuals, with graceful feathery foliage and large flowers like single dahlias. We list only the earlier flowering types which will bloom before frost.

- 120 **Early Single, Mammoth Crimson.** 3 ft. Pkt. 15 cts.
121 **Early Single, Mammoth Pink.** Pkt. 15 cts.
122 **Early Single, Mammoth White.** Pkt. 15 cts.
123 **Early Single, Mayfair Mixture.** White, pink and crimson shades in splendid mixture. Pkt. 15 cts.
124 **Kelwayana Crested.** An interesting novelty, the crest and so-called "guard" being of contrasting colors. Mixed shades of white, rose and deep rose. Pkt. 50 cts.
126 **Early Double, Mayfair Mixture.** Double and semi-double flowers of white, pink and crimson. Pkt. 25 cts.

Dianthus (See perennials also) Annual Pinks

These are most decorative border annuals, and their brilliant colors render them valuable for summer bedding and for cutting. They all sport a little from seed.

Heddewigii, Single (Japanese Pinks)

- 128 **Mayfair Mixture.** Giant strain of single flowers with broad petals of brilliant velvety crimson, red, rose and white. 15 in. Pkt. 15 cts.

Heddewigii, Double

- 129 **Lucifer.** Large, double, fringed flowers of a dazzling orange-scarlet; the most brilliantly colored. 1 ft. Pkt. 15 cts.
130 **Snowball.** Large, clove-scented flowers of beautiful snow-white; useful for the border or cutting. 1 ft. Pkt. 20 cts.
131 **Mayfair Mixture.** Very large, handsome flowers of various brilliant shades. 1 ft. Pkt. 15 cts.

Didiscus

Blue Lace Flower

- 132 **Coeruleus.** Feathery blue flowers resembling the wild carrot in form and growth. Beautiful for cutting. Pkt. 20 cts.



Dimorphotheca

South African Daisy

This is one of the best of the newer annuals. Seeds sown in the open ground in the spring will bloom freely within six weeks.

- 134 **Eklonis.** Large white, daisy-like flowers with small blue center. Beautiful for cutting. 2 ft. Pkt. 25 cts.
- 135 **Aurantiaca Hybrids.** Flowers of various colors, including primrose, orange, salmon and buff shades, as well as the paler tones; invaluable for cutting and in the border. Pkt. 15 cts.

Eschscholtzia

California Poppy

Brilliant flowers, producing a striking effect in beds and borders. They thrive in a dry, sunny situation.

- 137 **Golden West.** Yellow, with orange center. Pkt. 15 cts.
- 138 **Lovely.** Satiny rose with salmon tinge; beautiful for cutting. 1 ft. Pkt. 25 cts.
- 140 **Orange Flame.** Vivid orange-scarlet. 9 in. Pkt. 20 cts.
- 141 **Scarlet Beauty.** Deep scarlet; the most brilliantly colored of all the *Eschscholtzias*. Pkt. 25 cts.
- 142 **Mayfair Mixture.** A splendid mixture of all the brilliant shades; very beautiful for house decoration when massed in attractive bowls or baskets. Pkt. 15 cts.

Euphorbia

Snow-on-the-Mountain

- 144 **Variegata.** The beauty of this plant lies in the variegated foliage which is bright apple-green and white. It is said to be poisonous and caution should be used in the case of children who may pick it. Pkt. 20 cts.

Gaillardia (See perennials also)

Brilliantly colored flowers, in shades of red and yellow. Very gay in the borders and for cutting.

- 146 **The Bride.** Double creamy white. Pkt. 20 cts.
- 147 **Salmon.** Salmon-pink. Pkt. 15 cts.
- 148 **Mayfair Mixture.** All colors mixed. Pkt. 15 cts.

Godetia

Beautiful hardy annuals for the border or for cutting. These flowers are not as well known as they should be in this country, for they are easily grown and are useful for winter blooming as well as for the open border.

- 150 **Crimson Glow.** Dazzling crimson. Pkt. 15 cts.
- 151 **Fairy Queen.** Soft pink. Pkt. 15 cts.
- 152 **Gloriosa.** Dark red. Pkt. 15 cts.
- 154 **Lady Satin Rose.** Rose-pink. Pkt. 15 cts.
- 155 **Lavender.** Soft lavender. Pkt. 15 cts.
- 158 **Mayfair Mixture.** All colors in fine varieties. Pkt. 15 cts.



Gypsophila (See perennials also)

The varieties of *Gypsophila elegans* are very graceful plants of light, fairy-like growth. Very useful for house decoration with other flowers such as Sweet Peas.

- 159 **Crimson Gem.** Brilliant crimson flowers on graceful stems. Pkt. 15 cts.
- 160 **Rosy Gem.** Bright carmine-rose; a very attractive and dainty color. 1 ft. Pkt. 15 cts.
- 162 **White Pearl.** Snowy white flowers, produced in light, graceful panicles. 1½ ft. Pkt. 15 cts.

Helianthus

Sunflower

Showy plants for the back of borders, and valuable for cutting.

Miniature-Flowered, Dwarf

- 163 **Princess Ida.** Flowers white and soft yellow with dark center. 2½ ft. Pkt. 15 cts.
- 164 **Venus.** Cream-colored flowers with dark purple center and canary-yellow halo. 3 ft. Pkt. 15 cts.
- 166 **Red Miniature Sunflowers.** A charming strain of *Helianthus cucumerifolius* producing on long stems a great mass of flowers ranging from coppery-red to flesh color. In spite of their name they are not red, but rather shades of old rose and terra-cotta; very valuable for cutting. 5 ft. Pkt. 25 cts.

Large-Flowered

- 167 **Giant Single.** Massive foliage surmounted by one single flower of immense size; golden yellow with dark center. By pinching off the end of the shoot it can be made to throw more flowers. 10 ft. Pkt. 15 cts.

Helichrysum

Everlasting Straw Flowers

Useful for winter decoration after drying thoroughly.

- 168 **Crimson.** 2 ft. Pkt. 15 cts.
- 169 **Gold.** Pkt. 15 cts.
- 170 **Rose.** Pkt. 15 cts.
- 172 **Mayfair Mixture.** All colors. Pkt. 15 cts.

Ipomœa

Morning Glory

Rapid growing climbers; very useful for a quick cover for fences.

- 173 **Heavenly Blue.** Deep azure, delicately shaded white toward center. This must be started indoors early in the spring in order to obtain blooms before frost. Pkt. 25 cts.
- 175 **Imperialis, Mayfair Mixture.** Large flowers of a great variety of solid colors, as well as others of spotted and veined types. These are the Japanese Morning Glories. Pkt. 15 cts.



Larkspur

Annual Delphinium

Similar to the Delphinium but the flowers are smaller. They do not grow so tall and the colors are more varied. Invaluable for borders and for cutting during the summer.

- 176 **Giant Stock-flowered, Azure Blue.** Pkt. 15 cts.
- 177 **Giant Stock-flowered, Dark Blue.** Pkt. 15 cts.
- 178 **Giant Stock-flowered, Deep Rose.** Pkt. 15 cts.
- 180 **Giant Stock-flowered, Soft Pink.** Pkt. 15 cts.
- 181 **Giant Stock-flowered, Mayfair Mixture.** A splendid mixture of all colors in this type. Pkt. 15 cts.
- 182 **Double Emperor, Mayfair Mixture.** Of compact growth and not so branching as other varieties. 1½ ft. Pkt. 15 cts.

Lavatera

Mallow

- 184 **Splendens, Sunset.** Pure rose-pink with fine, dark foliage; beautiful border plant and good for cutting. 2½ ft. Pkt. 15 cts.

Lobelia

Small compact bushes covered with bloom and valuable as edgings for beds and borders.

- 185 **Celestial.** Deep sky-blue, with tiny white eye. ½ ft. Pkt. 20 cts.
- 186 **Snowball.** Pure white flowers of compact growth; a very free bloomer. ½ ft. Pkt. 15 cts.
- 187 **Tenuior.** Beautiful cobalt-blue with white center; a lovely plant for the border, for pots or for hanging baskets. More erect in habit than the other types. 1 ft. Pkt. 15 cts.

Lupinus (See perennials also)

Lupin

Annual Varieties

Very similar to the perennial Lupins, but not so large or so vigorous in growth. These are beautiful for the border, their decorative foliage making an attractive background for lower growing plants.

- 190 **Hartwegii, Blue.** Pkt. 15 cts.
- 192 **Hartwegii, Rose.** Pkt. 15 cts.
- 193 **Hartwegii, White.** Pkt. 15 cts.
- 195 **Hartwegii, Mayfair Mixture.** Pkt. 15 cts.

Marigold

Useful plants for borders or for cutting. They bloom all summer and are gay in the fall when many other annuals are gone.

African Types

- 198 **Light Yellow.** Double. 2½ ft. Pkt. 15 cts.
- 199 **Orange.** Double. Pkt. 15 cts.



- 200 **Primrose Queen.** Double flowers of a pretty shade of primrose. Pkt. 20 cts.
- 202 **Tree Marigold.** This novelty resembles the French Marigold in size of flower and in color, but it has no unpleasant odor which makes Marigolds disagreeable to some people. This is a great novelty and should be an acquisition as it blooms for a long period, lasts well as a cut flower and usually attains a height of 5 feet and over. Pkt. 25 cts.
- 203 **Mayfair Mixture.** All colors mixed. Pkt. 15 cts.

French Types

- 205 **Golden Ball.** Fine golden yellow; dwarf and compact. $\frac{1}{2}$ ft. Pkt. 15 cts.
- 206 **Legion of Honour.** Golden yellow, with large purple blotch; single. $\frac{3}{4}$ ft. Pkt. 15 cts.
- 208 **Dwarf Large-flowered Striped.** A strain of extra-large, double flowers, beautifully striped. Pkt. 15 cts.

Marvel of Peru

Four O'Clock

An old-fashioned flower very easily grown and useful where a color effect is needed in the border. It opens in the late afternoon or on cloudy days.

- 209 **Mayfair Mixture.** A wide range of colors. 2 ft. Pkt. 15 cts.

Mignonette

Grown for its very sweet perfume and useful for house decoration. Some of the newer varieties show a great deal of color in the green spikes of bloom. Seed should be scattered thinly on top of the soil and gently patted in.

- 211 **Orange Queen.** Orange-red spikes; the best of this type. Pkt. 15 cts.
- 213 **Perfect Model.** Huge spikes of coppery red flowers. Pkt. 15 cts.

Nasturtiums

Few summer-blooming plants can surpass the Nasturtium in wealth of bloom and ease of culture. They like a dry, rather poor soil.

- 214 **Mayfair Mixture.** Dwarf varieties. Pkt. 10 cts.; oz., 20 cts.
- 215 **Mayfair Mixture.** Tall varieties. Pkt. 10 cts.; oz., 20 cts.

Nemesia

Very valuable plants for bedding and edges of borders. They require rather a cool situation and should be sown in a shady spot.

- 216 **Blue Gem.** Soft azure-blue with pale pink buds; lovely little plants for edging resembling the Lobelia. $\frac{3}{4}$ ft. Pkt. 15 cts.
- 218 **Suttoni.** Large, brilliant flowers of varied colors including scarlet, orange, red, rose and purple tones. 15 in. Pkt. 15 cts.



Nicotiana

Tobacco

- 220 Affinis.** Large, pure white tubular flowers, opening in the late afternoon; very fragrant. Masses of this tobacco grown near a porch give a charming effect and a marvelous fragrance in the night air. 3 ft. Pkt. 15 cts.

Nigella

Love-in-a-Mist

Very graceful border plants, the flowers being partially hidden by the curious, fine, feathery green bracts. The horned seed-pods are also very ornamental. Very pretty associated with *Verbena*, Ellen Willmott.

- 222 Miss Jekyll.** A lovely variety, bearing on long stems large, flowers of a lovely tender blue. 1½ feet. Pkt, 15 cts.

Papaver (See perennials also)

Poppy

These favorite flowers should be used largely in flower beds and borders. Sow the seeds thinly on top of the soil and lightly pat in. Thin out when the seedlings are well up. They make charming effects when grown in masses through the borders.

Double Types

- 224 Chamois Rose.** Rose; very double form. Pkt. 15 cts.
- 225 New Double Queen.** A new strain of the Shirley type, with flowers of brilliant colors; double and semi-double. Pkt. 25 cts.
- 226 Nubian Prince.** Double flowers of glossy purple-maroon, with deeply fringed petals. 3 ft. Pkt. 15 cts.
- 227 Taplow Pink.** Double, rose-pink, resembling a big carnation. 2½ ft. Pkt. 15 cts.
- 228 White Swan.** Huge, snowy white flowers. 2 ft. Pkt. 15 cts.
- 230 Paeony-flowered Double, Mayfair Mixture.** Large, handsome flowers of brilliant colors. Pkt. 15 cts.

Single Types

- 231 Shirley Poppies, Wild Rose.** Clear rose-colored flowers. 2 ft. Pkt. 15 cts.
- 232 Shirley Poppies, Mayfair Mixture.** Ranging from delicate rose to shades of crimson, all with white centers. Pkt. 15 cts.

Petunia

A very valuable flower as a ground-cover in borders where tall plants are used. Also useful for hanging baskets, or edging borders. The seed is so very fine that it should be mixed with sand or fine earth in order to scatter it thinly.



Dwarf Bedding Types

- 234 **Blue Prince.** Beautiful deep violet-blue. $\frac{1}{2}$ ft. Pkt. 25 cts.
235 **Feltham Beauty.** Flowers ranging from white to rose; very bright and attractive. 1 ft. Pkt. 25 cts.
236 **Rosy Morn.** Lovely rose shading to white in center. Easily grown and a profuse bloomer. $\frac{1}{2}$ ft. Pkt. 15 cts.
237 **Snowball.** Pure white and very compact. Pkt. 15 cts.
239 **New Double Strain.** Producing from seed 70% of beautiful double flowers, mostly fringed and showing great variation in color. $1\frac{1}{2}$ ft. Pkt. 60 cts.

Large-Flowered Types

- 240 **Alba.** Pure white; enormous single flowers. Pkt. 30 cts.
242 **Triumph Pink.** Bright pink; fringed, single flowers. Pkt. 30 cts
243 **Velvety Purple.** Violet-purple flowers; single. Pkt. 40 cts.
244 **Prize Exhibition Strain.** Very large, single flowers in a superb mixture of forms and colors. Pkt. 40 cts.
246 **Giant Double, Mayfair Mixture.** Should produce about 25% of double flowers in a great variety of colors. Pkt. 70 cts.

Phacelia

- 247 **Campanularia.** Very showy hardy annual, with bright blue bell-shaped flowers. One of the earliest annuals to bloom. 9 in. Pkt. 15 cts.

Phlox Drummondii

Blooming throughout the season until frost, this annual is a treasure in the borders, where it grows quickly and is especially valuable as a cover-plant for bulb borders.

- 248 **Carnea.** Pale pink. 1 ft. Pkt. 15 cts.
249 **Isabellina.** Primrose-yellow. Pkt. 15 cts.
250 **Splendens.** Dazzling scarlet. Pkt. 15 cts.
252 **White.** Pkt. 15 cts.
253 **Mayfair Mixture.** All colors. Pkt. 15 cts.

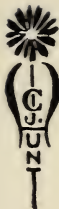
Portulaca

This forms a gay carpet for sunny spots in poor soil.

- 255 **Mayfair Mixture.** Fine double varieties in many bright colors. Pkt. 15 cts.

Salpiglossis

In beds and borders the rich coloring of the *Salpiglossis* at once attracts the eye. This is the only flower having shades of gold. Sow very thinly, as the seedlings are likely to "damp-off."



- 257 Lilac and Gold. Pkt. 20 cts.
258 Purple and Gold. Pkt. 20 cts.
260 Rose and Gold. Pkt. 20 cts.
261 Scarlet and Gold. Pkt. 20 cts.
262 Mayfair Mixture. All colors. Pkt. 15 cts.

Salvia (See perennials also) Sage

The annual varieties are used very largely for brilliant color effects in the summer and fall.

- 264 **Splendens, Fireball.** One of the finest of the scarlet Salvias, producing in late summer long spikes of brilliant scarlet flowers. 1½ ft. Pkt. 20 cts.
265 **Splendens, Harbinger.** A most valuable new addition to this class as it comes into bloom early in mid-summer and produces long spikes of brilliant scarlet flowers until late autumn. 15 in. Pkt. 40 cts.
266 **Splendens, Parma Violet.** A new break in the scarlet Sage type, producing flowers of a beautiful violet. 1½ ft. Pkt. 30 cts.
268 **Splendens, Perle Rose.** Bright rose with salmon tints. A beautiful border plant. 18 in. Pkt. 30 cts.
269 **Splendens, Plume of Rose.** A beautiful shade of rose, dwarf, compact, and a strong grower; an interesting novelty. Pkt. 30 cts.

Scabiosa (See perennials also) Sweet Scabious

Very showy and useful double hardy annuals, for borders or for cutting.

- 270 **Fairy.** Silvery lavender; very much like the perennial form. 2 ft. Pkt. 15 cts.
271 **Fire King.** Rich, velvety crimson with scarlet glow. 2 ft. Pkt. 15 cts.
272 **Peach Blossom.** A beautiful shade of peach blossom pink. Pkt. 40 cts.
273 **Pink.** Light rose to coral-pink. 2 ft. Pkt. 15 cts.
274 **Purple.** Very dark purple. Pkt. 15 cts.
275 **Red.** Coral-red, varying to crimson. 2 ft. Pkt. 15 cts.
277 **Mayfair Mixture.** Fine varieties in many colors. Pkt. 15 cts.

Schizanthus

Dainty, beautifully marked flowers covering the plants with bloom. Good for the border and also most useful for winter-blooming in the green-house.

- 279 **Dr. Badger's New Giant-flowered Hybrids.** A grand strain with large, handsome flowers in great variety of color and markings. 1 ft. Pkt. 60 cts.



Statice (See perennials also) Sea Lavender

Very beautiful for house decoration with other flowers, as their cloud-like masses of bloom make them very easy to arrange. They can also be dried for winter use.

- 280 Sinuata, Mayfair Mixture.** Contains mauve, yellow, rose and white flowers. This is the large-flowered type and very useful for cutting. 18 in. Pkt. 15 cts.

Stocks

Sweet-scented, double flowers blooming all summer if started early. If not started early, they are apt to go to leaf and bear few flowers. On an average, these Stocks give 70 to 75% of double flowers.

- 282 Empress Elizabeth.** Brilliant rose; a fine variety for pots as well as for the border. 15 in. Pkt. 20 cts.
- 283 Heatham Beauty.** Rose with salmon glow; large flowers. Pkt. 40 cts.
- 284 Lilac Queen.** Dark lilac. Pkt. 25 cts.
- 285 Parma Violet.** Lavender-blue. Pkt. 25 cts.
- 287 Snowdrift.** The finest white East Lothian Stock in cultivation. It has a dwarf, bushy habit, and produces numerous spikes of large, snowy white flowers. 1 ft. Pkt. 40 cts.

Sweet Peas

These beautiful flowers are not grown as much as they should be. They need a cool, moist season to do well, but they can be grown successfully if started in pots or in the cold-frame early in March, each seed being planted a good distance apart. Set these plants out early, giving them ample room and training each vine on a stake of its own. Keep the lower tendrils trimmed off and the flowers picked. When sown outdoors, seed should be in the ground just as early as possible.

- 288 Collection of 6 Exhibition Varieties.** Pkt. 75 cts.
- 290 Mayfair Mixture.** Superb varieties and colors; an extra fine mixture for planting in quantities. Pkt. 15 cts.; oz. 30 cts.

Verbena

Easily raised, and to a large extent the colors come true from seed. They are invaluable for covering beds under high-growing perennials and form a mass of color. The shoots can be pinned down here and there with hair-pins, and thus will form new plants.

- 292 Ellen Willmott.** One of the most popular Verbenas, producing large trusses of flowers of a lovely shade of rose-pink with white eye. 1 ft. Pkt. 20 cts.
- 293 Luminosa.** A splendid novelty producing very large flowers of a luminous brilliant pink. 9 in. Pkt. 40 cts.



- 294 **Rose Queen.** Soft, delicate rose; large flowers. Pkt. 20 cts.
295 **Scarlet Queen.** Vivid scarlet, with distinct white eye; very brilliant in the border. Pkt. 20 cts.
296 **Snow Queen.** Snowy white; large tresses. Pkt. 20 cts.
297 **Blue Hybrids.** Unusual shades of blue to purple flowers. Pkt. 20 cts.
298 **Royal Bouquet.** All colors. A new race of upright growing Verbenas. The flowers appear on straight stems 15 to 18 inches tall. 70% should come true to type. Pkt. 30 cts.
300 **Mayfair Mixture.** This is a mixture of large and brilliant flowers, surpassing most mixtures in its great variety of color and size. Pkt. 15 cts.

Vinca

Periwinkle

A useful annual for borders or for cutting.

- 302 **Mayfair Mixture.** Shades of white and pink. Pkt. 15 cts.

Viscaria

- 304 **Blue Gem.** Delicate blue; especially useful for edges of borders. 1 ft. Pkt. 25 cts.

Wallflower (See perennials also)

These are quite valuable, since blossoms may be had the first year from seed.

- 306 **Mayfair Mixture, Single.** Fine varieties in shades of yellow, orange, etc. Pkt. 15 cts.

Zinnia

One of the most useful annuals for the border and for cutting. The newer varieties show a wonderful improvement over the older types and we have excluded from our list the old-fashioned sorts.

Small-Flowered Type

- 310 **Elegans Lilliput Double, Mayfair Mixture.** A very pretty compact variety with charming small double flowers of various colors. 9 in. Pkt. 15 cts.

Large-Flowered Types

- 311 **Elegans, Burnt Orange.** Brilliant golden and orange shades. Large flowers. Pkt. 25 cts.
312 **Elegans, Rose King.** Very large, double flowers of a lovely bright rose; very decorative and beautiful for cutting. 1½ ft. Pkt. 20 cts.
313 **Elegans, Crimson.** Pkt. 15 cts.
314 **Elegans, Flesh.** Pkt. 15 cts.



- 315 Elegans, Orange. Pkt. 15 cts.
- 316 Elegans, Purple. Pkt. 15 cts.
- 317 Elegans, Scarlet. Pkt. 15 cts.
- 318 Elegans, White. Pkt. 15 cts.
- 320 Elegans, Yellow. Pkt. 15 cts.
- 322 Elegans, Mayfair Mixture. All colors. Pkt. 15 cts.

Super-Giant Dahlia-Flowered

A new race of giant Zinnias of the most remarkable substance and gorgeous coloring. The flowers sometimes measure 8 inches in diameter, the colors are clear and brilliant, and the plants are vigorous and bushy.

- 323 Comet. Full, rich crimson: a vigorous grower and huge flower. Pkt. 30 cts.
- 324 Dainty. Light rose, with deeper tint at center. Pkt. 30 cts.
- 325 Flashlight. Brilliant scarlet, shaded orange. Pkt. 30 cts.
- 326 Nell Gwynn. Pure orange-yellow; the only clear orange-yellow Zinnia we have ever seen; a marvelous flower for every purpose. Pkt. 30 cts.
- 328 Queen of the Snows. Beautiful, pure white. Pkt. 30 cts.
- 329 Rose Queen. Deep rose, similar to Dainty, but a deeper color. Pkt. 30 cts.
- 330 Royal Purple. Fine deep purple; large, well-formed flower. Pkt. 30 cts.
- 331 Royal Sovereign. Golden yellow, tinged brown; a huge flower. Pkt. 30 cts.
- 332 Starlight. An immense, deep, creamy yellow. Pkt. 30 cts.
- 334 Sweet Lavender. Deep lavender, turning to purple as the flower ages. Pkt. 30 cts.

OUR SPECIAL OFFER—1 packet of each of the foregoing 10 kinds — A collection of 10 varieties of our Super-Giant Zinnias for \$2.50. To order, ask for Offer A.



SEEDS OF PERENNIALS




IN this section are listed the varieties of hardy plants which give abundant bloom every year. It is, of course, the most valuable garden material, for when once established, but little further care is necessary to provide flowers throughout the year. Though they are a little more difficult to raise from seed than annuals, a supply of plants may be obtained in this way at a very moderate cost. We believe we are offering below a number of rather unusual and rarely beautiful things.

In this section are included the biennial class, or those kinds which are at their best the second year after sowing. Though the plants of biennials are hardy, seed should be sown each spring to secure abundant bloom in successive seasons.

On the back of each of our seed packets will be found a number corresponding to the special requirements noted in our leaflet on the sowing of seeds.

Varieties marked (*) are also useful for rock-gardens.

Achillea

A valuable perennial for cutting. Foliage and flowers resemble the Yarrow.

350 The Pearl. Small double white flowers in sprays, blooming throughout the summer. 2 ft. Pkt. 25 cts.

Adonis vernalis (See page 41)

Aethionema grandiflorum (See page 41)

Alyssum (See annuals also)

***353 Saxatile compactum (Golden Alyssum).** Masses of golden yellow flowers; valuable for edging the border or for rock-gardens. $\frac{1}{4}$ ft. Pkt. 15 cts.; oz. \$1.50.

355 Saxatile luteum. A beautiful pale yellow form. Pkt. 30 cts.

Anchusa

These vigorous plants provide a really blue note in the borders and are valuable for their color effect. The growth is rather coarse and not very suitable for cutting.

357 Italica, Dropmore Variety. Lovely, gentian-blue flowers in loose sprays. 5 ft. Pkt. 15 cts.



- 358 **Italica, Lissadel.** An improvement over the above, producing larger flowers of a softer color. 5 ft. Pkt. 30 cts.
- 360 **Myosotiflora.** Sprays of dainty blue flowers, resembling Forget-me-nots, and blooming in May and June. 1 ft. Pkt. 40 cts.

Androsace carnea (See page 41)

Anemone pulsatilla (See page 41)

Anemone vernalis (See page 41)

Aquilegia

Columbine

Fine border plants with graceful foliage, bearing a profusion of flowers in early summer. Their ease of growth, their wonderful variety as well as quality of color, make them one of our most valuable plants for every purpose. Seed should be well firmed in the soil to aid germination.

Long-Spurred Types

- 362 **Copper Queen.** Coppery red with shading of straw yellow. 1½ ft. Pkt. 60 cts.
- 364 **Silver Queen.** Large flowers of white, faintly tinged rosy sapphire. Pkt. 60 cts.
- 366 **Mrs. Nicholls.** Blue and white; a great improvement over former varieties in this color. Pkt. 25 cts.
- 367 **White Lady.** Pure white flowers; very graceful and effective. Pkt. 25 cts.
- 368 **Mayfair Rose and Scarlet Shades.** Flowers ranging from rose to scarlet, with white or yellow corolla. 2 ft. Pkt. 25 cts.
- 369 **Mayfair Yellow Strain.** Flowers mostly yellow, primrose and cream. Pkt. 20 cts.
- 370 **Mrs. Scott Elliott's Strain.** The very finest mixture of the long-spurred hybrids in a remarkably wide range of splendid colors. Pkt. 30 cts.

Short-Spurred Types

- 372 **Rose Queen.** Shades of rose, and rosy white flowers. 2 ft. Pkt. 25 cts.
- 373 **Munstead White.** Pure white flowers. This variety has remarkable foliage and with its very profuse bloom is a valuable acquisition to the early border. Pkt. 15 cts.

Flabellata (See page 41)

Arabis

Rock Cress

A low-growing plant to be used on the edge of borders, or in the rock-garden. Blooming in the early spring, it is especially effective when grown in association with the Grape Hyacinths.



- 375 *Albida rosea*. A pretty rose form, easily grown from seed. $\frac{3}{4}$ ft. Pkt. 40 cts.
- *376 *Albida superba*. Large trusses of white flowers. Pkt. 15 cts; $\frac{1}{2}$ oz. \$1.

Arenaria balearica (See page 42)

Aster

Michaelmas Daisy

A very valuable form of hardy aster, useful for fall borders.

- 378 *Amellus, Lavender, Blue and Purple Strain*. An early-flowering type of erect growth, bearing clusters of flowers ranging from soft lavender to deep purple. 2 ft. Pkt. 25 cts.
- 380 *Amellus, Rose and Pink Strain*. Produces a good proportion of rose, pink and bluish shades. 2 ft. Pkt. 25 cts.
- 381 *Sub-coeruleus*. Large, lavender, daisy-like flowers with orange centers, blooming in early summer; a hardy species from India. 12 in. Pkt. 25 cts.

Aster alpinus (See page 42)

Aubrietia

Dwarf, alpine plants, producing sheets of bloom in the spring.

- 382 *Leichtlini*. Bright rose to carmine flowers. Pkt. 40 cts.
- 383 *Mrs. Lloyd Edwards*. Bright purple. $\frac{1}{2}$ ft. Pkt. 25 cts.
- 384 *Whitewell Gem*. Large, violet flowers with white halo. Pkt. 25 cts.
- *386 *Mayfair Mixture*. Large-flowered hybrids, containing the finest new varieties in purple, crimson, rose, etc.; fine for the edge of borders, or the rock-garden. $\frac{1}{2}$ ft. Pkt. 20 cts.

Campanula

Bellflower

The tall-growing Bellflowers are invaluable for the back of borders, while the dwarf kinds make good edgings, or may be used in the rock-garden. The Canterbury Bells are biennials, but they are so beautiful that they amply repay one for the trouble of raising new plants each year.

Barbata (See page 42).

- *388 *Carpatica (Carpathian Harebell)*. A low-growing plant bearing small blue flowers; lovely for the rock-garden. 1 ft. Pkt. 15 cts.
- 389 *Lactifolia, Blue*. Loose bunches of flowers on tall spikes. 4 ft. Pkt. 15 cts.
- 390 *Persicifolia alba grandiflora*. Large, white bells of good substance; remains in bloom a long time, if the old flowers are kept cut. 2 ft. Pkt. 20 cts.



- 391 *Persicifolia coerulea grandiflora*. The blue form, with lovely, light blue bells. 2 ft. Pkt. 20 cts.
- 392 *Persicifolia Telham Beauty*. Produces immense, bell-shaped, open flowers of delicate china-blue. Pkt. 30 cts.
- Pusilla* (See page 42)

Calycanthemum—Canterbury Bells

A good proportion of these will come true to color.

- 394 **Blue**. Pkt. 15 cts.
- 395 **Lavender**. Pkt. 15 cts.
- 396 **Rose**. Pkt. 15 cts.
- 397 **White**. Pkt. 15 cts.
- 400 **Dean's Improved Hybrids**. All colors. Pkt. 15 cts.

Candytuft (See annuals also)

The perennial form of this popular flower makes a wonderful edging plant. The flowers are very large and fine.

- 402 **Gibraltarica Hybrids**. Large-flowered hybrids with delicate lilac flowers. Pkt. 15 cts.
- 403 **Sempervirens**. Large, white flowers. Pkt. 20 cts.

Centaurea (See annuals also)

- 405 **Montana (Perennial Blue Cornflower)**. Bright blue; very showy border plants. 1½ ft. Pkt. 15 cts.

Cerastium

Snow-in-Summer

- *407 **Tomentosum**. Bears, in early summer, a profusion of white flowers, with gray, downy foliage; useful for edging and rock-garden. ½ ft. Pkt. 15 cts.

Cheiranthus

- 409 **Allioni (Siberian Wallflower)**. Striking, orange and yellow, fragrant flowers, resembling Wallflowers. A valuable addition to the border, as it blooms in late May just as the Daffodils and Tulips are passing off. If the withered flowers are kept cut, it will continue to bloom all summer. 1 ft. Pkt. 15 cts.
- 410 **Kewensis**. Opening pale primrose and passing to violet; a fine hybrid, with deliciously fragrant flowers. 2 ft. Pkt. 25 cts.
- Linifolius** (See page 42)

Chrysanthemum (See annuals also)

These should not be confused with the fall-blooming Chrysanthemums. They are summer-blooming, daisy-like flowers, most useful for cutting or the border.

- 415 **Leucanthemum maximum, Shasta Daisy**. Large, white daisies with strong stems and foliage; a mid-season variety, and the most free-blooming of the family. 2½ ft. Pkt. 15 cts.



- 416 *Leucanthemum maximum*, The Speaker.** Huge, daisy-like flowers, especially pretty when grown with Phlox, Elizabeth Campbell. The finest of this class, coming into bloom in July and remaining a long time in good condition. 2½ ft. Pkt. 15 cts.
- 418 *Leucanthemum hybridum*, The Gem.** A very early hybrid with medium-sized, white, daisy-like flowers. This blooms in May, so that it can be used to good effect with the spring bulbs. 1 ft. Pkt. 15 cts.

Cineraria

Decorative plants for the greenhouse in winter.

- 420 English Prize Strain.** Large flowers of various colors, including purple, blue and mauve. Pkt. 60 cts.

Coreopsis (See annuals also)

The well-known, perennial form of this useful family. Although this is a perennial, it is so short-lived that it should be treated as a biennial.

- 422 *Grandiflora*.** Rich, golden yellow flowers, blooming all summer. 3 ft. Pkt. 15 cts.

Cowslip

- 423 *Mayfair Mixture*.** Giant-flowered kinds in shades of crimson, scarlet, orange, and yellow. 15 in. Pkt. 25 cts.

Cynoglossum

- 425 *Blue Gem*.** Large sprays of brilliant blue flowers in early summer; a fine border plant to be treated as a biennial and given protection over winter. 1½ ft. Pkt. 40 cts.

Dahlia

These are very easily grown and will flower the first year from seed, if started early.

- 427 *Cactus Varieties*.** These are saved from the finest named varieties; the seed will produce only a percentage of cactus flowers, but the rest will be of good color and form. Pkt. 30 cts.
- 428 *Coltness Hybrids*.** A splendid, new race of single dahlias, with a wide range of vivid colors; plants of compact habit about 18 inches high. Pkt. 25 cts.
- 430 *Decorative Varieties*.** Large, double flowers of various colors; a proportion only will come true to type. Pkt. 25 cts.
- 431 *Paeony-flowered Varieties*.** Semi-double, graceful flowers on long stems. 6 ft. Pkt. 30 cts.
- 432 *Peter Pan*.** A charming, miniature strain, forming compact bushes; flowers are semi-double and of great variety of color. 1½ ft. Pkt. 25 cts.
- 433 *Pompon, Double Mayfair Mixture*.** Small flowers of various colors, very useful for cutting. Pkt. 25 cts.



Daisy

Bellis Perennis

Useful for edgings in spring borders or among pansies.

- 435 **Giant Rose.** Shades of pink and rose. 4 in. Pkt. 15 cts.
436 **Giant White.** Snowy white. Pkt. 15 cts.
437 **New Quilled.** Shades of dark red to light yellow and pink. Pkt. 25 cts.

Delphinium

Larkspur

Tall growing perennials in shades of light and dark blue. Seed may be sown any time from April to July, but fresh seed germinates more surely. Seeds of our named varieties will give a good percentage of plants true to description, but it is best to grow the seedlings for a year to select the true types before planting them in their permanent place. From our seeds the cream of a representative collection will be obtained and all who wish to secure superb, named kinds at a minimum of expense can safely rely on this selection.

- 440 **Britain's Pride.** Semi-double. Sky-blue and lavender with white eye. Pkt. 30 cts.
441 **Captain John Stone.** Deep velvety blue shaded violet with yellow eye. Pkt. 30 cts.
442 **Decoration.** Double. Deep sky-blue. Pkt. 30 cts.
443 **Duchess of Somerset.** Rose, edged slate blue; semi-double. Pkt. 30 cts.
445 **Effective.** Semi-double. Pale blue with black center. Pkt. 30 cts.
446 **Kelway's Brilliance.** Bright blue with white eye; semi-double. Pkt. 30 cts.
447 **Lita Paton.** Semi-double. Light blue with mauve inner petals and black and yellow eye. Pkt. 30 cts.
449 **Prince Charming.** Semi-double. Lilac-pink, with black eye. Pkt. 30 cts.
451 **Sir Robert Borden.** Violet edged blue; a very handsome semi-double flower. Pkt. 30 cts.
453 **Smoke of War.** Deep reddish violet with black center. Pkt. 30 cts.

OUR SPECIAL OFFER—1 packet of each of the foregoing 10 kinds—A collection of 10 varieties of our superb new Delphiniums for \$2.50. To order, ask for Offer B.

- 455 **Mayfair Mixture.** All shades of blue, including pale blue, lavender, and soft shades to darker brilliant blues. The finest and largest flowers in the new hybrid forms. Pkt. 25 cts.



- 457 **Belladonna, Cliveden Beauty.** Large, Cambridge-blue flowers; the Belladonna type is more branching and the leaves very finely cut. Pkt. 25 cts.
- 458 **Grandiflorum sinensis, Azure Fairy.** A very graceful little plant with flowers of a light azure-blue. 1 ft. Pkt. 15 cts.
- 459 **Grandiflorum, Blue Butterfly.** Deep gentian-blue, with a brown spot on each petal; a small Larkspur of branching habit, blooming the first year from seed. 1½ ft. Pkt. 15 cts.
- 460 **Nudicaule, Lemon Gem.** Dwarf habit, of a beautiful clear yellow. A fine novelty in a most attractive color. 1 ft. Pkt. 40 cts.

Dianthus (See annuals also) Hardy Pinks

Alpinus. (See page 42).

- 461 **Allwoodii.** A hybrid between the true Carnation and the hardy Pinks, producing flowers of various colors with true carnation fragrance. The plants require some protection over winter. Pkt. 40 cts.
- 462 **Caesius, Mayfair Mixture.** Various shades of rose. For edging borders or for rock-work these pinks are very useful. They are hardy and flower well; somewhat like plumarius, but not so double, and have smaller flowers. 8 in. Pkt. 15 cts.
- 464 **Plumarius, Mayfair Mixture.** Shades of blush to deep rose; the fragrant grass pinks found in old gardens. Pkt. 15 cts.
- *465 **Procumbens, Major Stern's Variety.** Tiny flowers of brilliant crimson, with dark foliage. 8 in. Pkt. 25 cts.

Digitalis Foxglove

Handsome, stately plants for shrubbery, borders, woodland, etc.

- 467 **Large-flowered Rose.** 4 ft. Pkt. 15 cts.
- 468 **Large-flowered White.** 4 ft. Pkt. 15 cts.
- 469 **The Shirley.** Very long spikes, with large flowers ranging from dark maroon to white. A new strain raised by the Rev. W. Wilks. 5 to 7 ft. Pkt. 20 cts.
- 470 **Doronicum Caucasicum.** An invaluable addition to the perennial garden. Yellow daisy-like flowers of good size, blooming with the Daffodils and continuing in bloom throughout the spring. 2 ft. Pkt. 60 cts.

Dryas octopetala (See page 42)

Erinus alpinus (See page 42)

Echinops Globe Thistle

- 471 **Ritro.** Round heads of steel-blue flowers; very effective in the border. 3 ft. Pkt. 15 cts.



Eryngium

Sea Holly

473. **Plarum.** Small, round flower heads of pale blue; very useful for tie borred and cutting. This gives a beautiful cloud-like effect in late summer in the perennial border. 2 ft. Pkt. 15 cts.

Gaillardia (See annuals also)

The perennial form of this useful flower.

- 475 **Grandiflora, Mayfair Mixture.** Shades of yellow and brown in form similar to the Cornflower. 2 ft. Pkt. 20 cts.

Gentiana acaulis (See page 42)

Gentiana verna (See page 42)

Geum

Large, semi-double flowers of brilliant coloring. These have been very much improved of late and now provide some very striking colors for the garden.

- 477 **Mrs. Bradshaw.** Brilliant, rich mson. cri 2 ft. Pkt. 20 cts.
478 **Orange Queen.** The first orange Geum yet raised. Pkt. 25 cts.

Gypsophila (See annuals also)

Fine for cutting or for a background for other flowers; useful for drying for winter decoration.

- 479 **Paniculata Double.** White. 2½ ft. Pkt. 40 cts.
480 **Paniculata, Single.** White. 2½ ft. Pkt. 15 cts.

Repens (See page 42)

Helenium

A useful perennial for the border or for cutting. Flowers in form of large yellow daisies.

- 481 **Riverton Gem.** Orange-yellow with brown centers. 2 ft. Pkt. 15 cts.

Helianthemum (See page 42)

Heliotrope

Used for greenhouse or treated as an annual out-of-doors, as it is not hardy.

- 483 **Mayfair Mixture.** A giant-flowered strain producing fine compact plants, covered with large trusses of fragrant, dark lilac and purple flowers. 1½ ft. Pkt. 25 cts.

Heuchera

Charming perennials for borders. The foliage is dwarf and compact, the flowers rising on tall stems in delicate panicles of bloom; useful for cutting.



485 Sanguinea, Mayfair Mixture. New hybrids in shades of red to coral-red. Pkt. 25 cts.

Hibiscus

Mallow

A new race of large-flowered Mallows; very beautiful as a background in the hardy border. These will flower the first year from seed, if started early.

487 Hybridus Grandiflorus. A beautiful mixture of red, pink, white and blush. 4 ft. Pkt. 20 cts.

Hollyhock

A fine, old-fashioned flower, most decorative when used against walls or fences, or as a background to borders.

Double Varieties

488 Exquisite. Large flowers in many colors, beautifully curled and fringed, each petal being margined white and having a striking blotch. 6 ft. Pkt. 25 cts.

489 Pink Queen. Salmon-pink, with large flowers. Pkt. 25 cts.

491 Primrose Queen. The nearest approach to a good yellow double Hollyhock yet introduced. Pkt. 60 cts.

492 Chaters Strain, Bright Rose. Pkt. 20 cts.

493 Chaters Strain, Cerise. Pkt. 20 cts.

494 Chaters Strain, Salmon. Pkt. 20 cts.

495 Chaters Strain, Sulphur. Pkt. 20 cts.

496 Chaters Strain, Large-flowered Hybrids. Pkt. 15 cts.

Single Varieties

499 Chaters Strain, Large-flowered Hybrids. Pkt. 15 cts.

Honesty

Valuable for the fragrant flowers in the border and for the silvery seed-pods used for winter decoration.

501 Mayfair Mixture. Shades of white to rosy lilac. Pkt. 20 cts.

Hypericum Coris (See page 42)

Hypericum fragile (See page 42)

Lavandula

Lavender

Sweet-scented plants used for drying and placing in the linen closet.

503 Munstead Early Dwarf. Bushy plants with light blue, deliciously scented flowers. 1 ft. Pkt. 25 cts.

Lilium

These are easily grown from seed, but they take three years as a rule to produce bulbs large enough to bloom.



- 505 **Martagon Album.** A very beautiful lily with spikes 4 to 5 feet high, carrying 20 to 30 waxy white flowers; a superb novelty which should be grown by every lover of the lilies. Pkt. 60 cts.
- 506 **Regale.** A beautiful Chinese lily bearing large, trumpet-shaped, fragrant flowers of white, flushed yellow and slightly tinged dull red on the back of the petals. 3 to 5 ft. Pkt. 50 cts.
- 508 **Sulphur-Gale Hybrids.** Hybrids between *Lilium Sulphureum* and *Lilium Regale*. Of a deeper tone than Regale, later, and a stronger grower. Pkt. 50 cts.

Linaria alpina (See page 42)

Linum

Flax

Useful perennials with feathery foliage and very dainty flowers.

Alpinum (See page 42)

Flavum. (See page 42).

- 509 **Narbonense.** A fine strain of *perenne*, not so tall but a more exquisite color. Pkt. 20 cts.
- 510 **Perenne.** Delicate, light blue flowers carried on long, slender stems with delicate foliage. The flowers seem floating in the air and when associated with yellow Cottage Tulips, the effect is especially pleasing. The individual flowers last but a day, but bloom is constant from May until the end of June. Not suitable for cutting. Pkt. 15 cts.

Lithospermum intermedium (See page 42)

Lupinus (See annuals also)

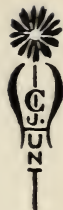
Lupin

Handsome plants, bearing an abundance of flowers of soft pastel tones with most decorative foliage. These are not grown in this country as much as they should be. They are among the most useful plants we have, and are most attractive in the border and very useful for cutting. They do not come entirely true from seed, but the sports are all attractive and many of them fragrant. If sown early, some will bloom the first season. 3 to 4 feet.

- 512 **Hybrid White Strain.** Long sprays of white flowers. Pkt. 25 cts.
- 513 **Paynei.** A new Californian species, with massive foliage and large spikes of pink flowers. 6 to 7 ft. Pkt. 80 cts.

Polyphyllus and Their Hybrids

- 515 **Captivation.** Soft blue; a very charming shade. Pkt. 25 cts.
- 516 **Chameleon.** Blue and yellow flowers, changing to blue and white. Pkt. 25 cts.
- 517 **Coronation.** Deep bright yellow. An unusually bright color among the pastel tinted Lupins. Pkt. 25 cts.
- 518 **Dawn.** Primrose-yellow buds, changing to light mauve with silvery sheen. Pkt. 25 cts.



- 519 **Dollar Princess.** Soft blue with white lip. Pkt. 25 cts.
520 **Evening Glow.** Opening mauve and yellow, passing off rosy buff. Pkt. 25 cts.
521 **Fulvius.** Flowers open deep rose shaded cream, becoming deeper as the flower ages. 3½ ft. Pkt. 40 cts.
522 **Louise.** Oxford-blue, giving one very long spike. Pkt. 25 cts.
523 **Moerheimi.** Soft peach, with colored lip. Pkt. 25 cts.
524 **Nelly.** White and rose; a nice combination of colors. Pkt. 25 cts.
525 **Old China.** Pale blue, with rosy mauve upper petals. Pkt. 40 cts.
526 **Southern Belle.** Soft lavender, shading to mauve. Pkt. 25 cts.
527 **Sunshine.** Bright golden yellow flowers on a good spike. 4 ft. Pkt. 25 cts.
529 **Taplow Purple.** Rich, glowing purple. Pkt. 25 cts.
530 **Taplow Yellow.** Clear pure yellow; the finest yellow Lupin yet raised. 4 ft. Pkt. 25 cts.
532 **True Blue.** Rich marine-blue; a long spike and a beautiful clear color. Pkt. 25 cts.
533 **Yellow Boy.** Long spikes of soft yellow flowers, shaded buff; sweet-scented. Pkt. 25 cts.
534 **Downer's Hybrids.** A wonderful strain of mixed hybrids, showing many wonderful pastel tones. Pkt. 20 cts.

Lychnis alpina (See page 42)

Malva

Musk Mallow

Beautiful border plants growing about 2-3 feet high and producing quantities of mallow-like flowers among bright green foliage. These are fragrant and most useful for cutting.

- 536 **Moschata rosea.** Rose-pink, fragrant flowers blooming from June to September. Pkt. 15 cts.
538 **Moschata alba.** Snowy white, fragrant flowers. Pkt. 15 cts.

Meconopsis

Plants of the Poppy family, mostly from the Far East and thriving best in moist situations. Where they succeed, they give an abundance of large flowers in shades of blue and yellow, not found in other poppies.

- 539 **Baileyi.** This is the most beautiful of the blue perennial poppies and was brought from Thibet recently. It throws 5 or 6 stems 2 to 3 ft. high, bearing freely four petalled flowers of a beautiful sky blue, with yellow anthers. Pkt. 30 cts.
540 **Integrifolia Maxima.** This giant yellow Poppy is also from Thibet, and is a biennial. It throws one stem 2 or 3 ft. high, with sometimes as many as 30 lemon-yellow flowers. This will sow itself if planted in a moist but well-drained soil. Pkt. 25 cts.



541 Wallichii. (The Blue Himalayan Poppy.) Large flowers of a beautiful pale blue, with golden anthers. This biennial will self sow if planted in suitably moist and shaded situations in rough peaty soil. 4 ft. Pkt. 30 cts.

Myosotideum New Zealand Giant Forget-me-not

542 Nobile. Large heads of Forget-me-not-like flowers. A very beautiful half-hardy perennial, which grows best in a sheltered position, partially shaded, and protected over winter. 1½ ft. Pkt. 25 cts.

Myosotis Forget-me-not

One of the few really blue flowers that we have for the spring garden. Useful for all purposes; for edging beds, carpeting bulb beds, or for the rock-garden or the wild-garden. If the ground is not stirred too early in the spring and the little seedlings have a chance to show, these plants will sow themselves in the most charming way here and there throughout the garden.

***543 Alpine Blue.** Very rich deep blue, forming compact bushes covered with blooms on reddish stems. 9 in. Pkt. 20 cts.

***544 Blue King.** An exquisite color, though not quite so intense as Alpine Blue; blooms very freely and sows itself readily. Pkt. 20 cts.

***545 Rosy Gem.** Compact little bushes with clusters of pale rose-pink flowers; beautiful associated with Blue King. Pkt. 20 cts.

***546 White Lady.** Clusters of snowy white flowers with striking yellow eye. Pkt. 20 cts.

547 Palustris grandiflora. The wild Water Forget-me-not. Bright blue, with yellow eye; a charming plant to naturalize in damp places. Pkt. 15 cts.; oz. \$3.

Nepeta

548 Mussini. A beautiful plant for borders, producing spikes of lavender-blue flowers from June to September. 1 ft. Pkt. 25 cts.

Oenothera Evening Primrose

Very effective plants for beds, borders, shrubberies and naturalizing.

552 Afterglow. Bright yellow flowers with brilliant red calyx. 3 ft. Pkt. 15 cts.

Pansy

Seed sown in early summer produces flowering plants the following spring. Pansies require a fairly rich soil and plenty of moisture.

557 Apricot Queen. Chrome-yellow and chamois with maroon eye. Pkt. 25 cts.



- 558 **Fairy Queen.** Azure-blue with white edge. Pkt. 20 cts.
559 **King of the Blues.** Fine, dark blue. Pkt. 20 cts.
561 **Mayfair Blue.** Clear, light blue; a fine contrast when planted with King of the Blues. Pkt. 25 cts.
562 **Mayfair Yellow.** Large yellow, with dark velvety blotches. Pkt. 25 cts.
563 **Snow Queen.** Pure white. Pkt. 25 cts.
564 **Mayfair Mixture.** A grand strain producing large, handsome flowers of the richest colors and most beautiful markings. Pkt. 40 cts.

Tufted Pansies

These Tufted Pansies give a continual mass of bloom from spring to autumn; cut back in July after the first flowers are over, the plants again burst into bloom and remain decorative for a long time. Flowers mostly self-colored and rayless. They do not come true from seed in separate colors.

- 566 **Mayfair Mixture.** Saved from fine varieties in many beautiful shades. $\frac{1}{2}$ ft. Pkt. 40 cts.

Papaver (See annuals also) Poppy

Decorative border plants. The perennial varieties bloom early in June and provide a mass of color for the borders. They can be used as cut flowers, if the stems are put into boiling water for a few minutes after cutting. They will then last for several days in the house. The seedlings do not all come true to color, but a good proportion of them will do so.

Alpinus. (See page 42).

Nudicaule—Iceland Poppies

Low-growing perennial poppies which will flower the same year, if sown early. Height 1 ft.

- 568 **Tangerine.** Large, orange flowers. Pkt. 30 cts.
569 **Munstead Strain.** Produces from May to September beautiful flowers in many delicate art shades. Pkt. 25 cts.

Orientele

- 571 **Apricot Queen.** Large, apricot-colored flowers. Pkt. 25 cts.
572 **Beauty of Livermere.** Large, fine crimson with black blotch. Pkt. 25 cts.
573 **Joyce.** Cerise-rose, with black blotches. 3 ft. Pkt. 25 cts.
575 **Mrs. Perry.** Soft shrimp-pink. Pkt. 25 cts.
577 **Perry's White.** Large, satiny white flowers with purple blotch at the base of each petal. Pkt. 40 cts.



- 578 **Queen Alexandra.** Bright, rosy salmon with conspicuous crimson blotch. Pkt. 30 cts.
- 579 **Salmon Queen.** Light salmon, with yellow flush. Pkt. 25 cts.

OUR SPECIAL OFFER. 1 packet of each of the foregoing 7 kinds—A collection of 7 varieties of our finest Oriental Poppies for \$1.60. To order, ask for Offer C.

- 581 **Mayfair Mixture.** A splendid mixture of the finest hybrids, most of them having black blotches at the base of the petals. Pkt. 20 cts.

Pentstemon

A handsome race of border plants with flowers somewhat resembling the Foxgloves in form, though not so tall. Though a perennial, in very cold climates it is best treated as an annual, since it will flower the first year from seed.

- 582 **Mayfair Mixture.** Large flowers of most brilliant colors. 2 ft. Pkt. 40 cts.

Physalis

Japanese Lantern Plant

- 584 **Franchetti.** Used for winter decoration. The seeds are contained in little lantern-like pods, which can be dried for winter house decoration. Pkt. 20 cts.

Physostegia

One of the prettiest of the hardy perennials. It forms dense bushes 3 to 4 ft. high, bearing throughout the summer spikes of delicate flowers, resembling heather in appearance.

- 586 **Virginica.** Delicate pink, tubular flowers. Pkt. 20 cts.
- 588 **Virginica alba.** The white form; very pretty growing with the pale pink. Pkt. 20 cts.

Pink

Hardy, sweet-scented flowers similar to carnations.

- 590 **Perpetual-flowering, Mayfair Mixture.** A choice variety of colors in single, double and semi-double flowers. Pkt. 20 cts.

Platycodon

Chinese Balloon-flower

A fine border plant, very hardy and an effective color.

- 593 **Grandiflorum.** Fine, deep blue; cup-shaped flowers. 1½ ft. Pkt. 15 cts.



**Polyanthus-Primrose*

The beautiful cluster primroses are very useful for spring borders, and invaluable for rock-work or naturalizing. The seeds require a moist, cool soil in which to germinate, and if planted late in the season, they will sometimes lie dormant until the following spring.

- 595 **Blue Beauty.** Flowers range in color from deep violet to lavender. Pkt. 85 cts.
- 596 **Munstead Giant.** Large flowers of yellow, primrose and white. Pkt. 25 cts.
- 597 **Spetchley Strain.** Very robust, dwarf plants in a wide range of colors, including many attractive art shades. Pkt. 40 cts.
- 599 **New Zealand Strain.** A well-known strain of these beautiful flowers, including a great variety of pinks, roses, reds and maroons. Pkt. 30 cts.

Primula

Primrose

- 601 **English Yellow.** The wild English primrose; fine for naturalizing. Pkt. 25 cts.
- Denticulata cashmiriana.** (See page 43).
- 602 **Florindae.** (The New Giant Cowslip from Thibet.) A most interesting novelty. It carries a tier of 30 or more flowers, sulphur-yellow and very fragrant, on stems 3 to 4 ft. high. It requires shade and moisture to do well. Pkt. 30 cts.

Pyrethrum

These beautiful, daisy-like perennials, with their decorative foliage and clear colors, are invaluable for borders and for cutting. They are especially attractive when planted with Aquilegias, as they bloom at the same time. We are glad to be able to offer a limited number of new, fine, named varieties, which will delight the gardener who is looking for new and choice things. Like other highly-developed strains of seed, all will not come true to description.

Single Varieties

- 603 **Roseum, Lady of Langport.** Charming rose-pink. Pkt. 30 cts.
- 604 **Roseum, Langport Knight.** Brilliant deep rose. Pkt. 30 cts.
- 606 **Roseum, Ox-eye.** Scarlet, with white ring around the yellow eye. Pkt. 30 cts.
- 607 **Roseum, Princess Dusky.** Deep maroon-crimson. Pkt. 30 cts.
- 608 **Roseum, Ringdove.** Light pink with white ring around the center. Pkt. 30 cts.



OUR SPECIAL OFFER—1 packet of each of the foregoing 5 kinds—A collection of 5 varieties of our novelties in Pyrethrums for \$1.25. To order, ask for Offer D.

610 Roseum, Mayfair Mixture. Saved from large flowers of bright colors. 2 ft. Pkt. 25 cts.

Double Varieties

612 Roseum, Mayfair Mixture. Finest hybrids. Saved from a splendid collection of the best, double, named varieties, in shades of crimson, rose, blush, white and cream. About 60% usually come double. 2 ft. Pkt. 40 cts.

Salvia (See annuals also) Sage

615 Patens, New Early Dwarf. Brilliant gentian-blue. 1½ ft. Pkt. 60 cts.

Saxifraga decipiens (See page 43)

Scabiosa (See annuals also)

The perennial forms of this valuable border plant are very beautiful. Useful for cutting, as well as effective in the garden.

617 Caucasica. Fine large flowers of delicate lavender-blue. 2 ft. Pkt. 15 cts.

618 Caucasica, House's Giant Strain. Superb, new hybrids of the type, ranging in color from azure-blue to lavender and deep blue. 3 ft. Pkt. 85 cts.

619 Columbaria, Rosy Mauve. Bright mauve-rose; a South African form and an unusual shade. Pkt. 40 cts.

Sedum kamtschaticum (See page 43)

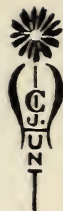
Sidalcea

Interesting border plants, blooming from June until autumn, and producing stately spikes of flowers which resemble the annual Larkspurs.

620 Stark's Hybrids. This strain contains many beautiful colors, such as pink, crimson, and all shades of rose and salmon. 4 ft. Pkt. 40 cts.

Silene acaulis (See page 43)

Silene alpestris (See page 43)



Statice (See annuals also) Sea Lavender

The perennial form is invaluable for the borders as well as drying for winter house decoration.

- 621 **Latifolia**. Branching heads of mauve-colored flowers. 2 ft. Pkt. 15 cts.

Sweet Rocket

Spring flowering, sweet scented hardy plants, similar to the flowers of Honesty. 2 ft.

- 623 **Purple**. Pkt. 15 cts.
624 **White**. Pkt. 15 cts.
625 **Mayfair Mixture**. Pkt. 15 cts.

Sweet William

These old-fashioned fragrant flowers are still greatly prized for the garden.

- 627 **Copper King**. Beautiful coppery red. 1½ ft. Pkt. 25 cts.
628 **Pink Beauty**. Massive heads of soft salmon-rose. 1½ ft. Pkt. 15 cts.
630 **Scarlet Beauty**. Intense rose-scarlet; a good proportion of the seeds should come true. This is a most effective variety when grown in masses. 1½ ft. Pkt. 15 cts.
632 **Dark-colored Hybrids**. Rich shades of dark maroon, dark scarlet and velvety crimson. 1½ ft. Pkt. 15 cts.
633 **Dean's Hybrids Auricula-Eyed**. Large flowers with bands of brilliant color around the white eye. Pkt. 15 cts.

Thymus Serpyllum (See page 43)

Trollius

Globe Flower

Low-growing plants, blooming in early spring.

- 635 **Giant-flowered Hybrids**. Large-flowered varieties including brilliant yellow, deep gold and glowing orange. 2 ft. Pkt. 25 cts.

Tunica Saxifraga (See page 43)

Veronica Guthrieana (See page 43)

Veronica Incana (See page 43)

Viola Cornuta

Horned Pansy

These pansy-violets are continuous bloomers and indispensable for borders and edgings or for rock-work. They are all delicately fragrant and bloom the same year from spring-sown seeds.

- 637 **Cyclops**. Deep, bright violet with large white eye. Pkt. 25 cts.



- 638 **Gracilis.** A little species from Greece, of graceful, trailing habit with flowers of intense violet-blue. Pkt. 60 cts.
- 640 **G. Wermig.** Dark violet-blue, resembling sweet violets; this plant prefers partial shade and a somewhat moist soil; blooms from May until Autumn. $\frac{1}{2}$ ft. Pkt. 40 cts.
- 641 **Haslemere.** Soft lilac-pink; a charming miniature pansy. $\frac{1}{4}$ ft. Pkt. 25 cts.
- 642 **Jersey Gem.** Deep violet-blue flowers of good size. The plants are covered with a profusion of flowers the entire season, making it a very valuable addition to the perennial border. Seeds should come about 70% true to type. Pkt. 50 cts.
- 644 **Lord Nelson.** This resembles *Gracilis*, but has larger flowers of a brilliant violet-purple on tall, erect stems. Pkt. 40 cts.
- 645 **Papilio.** Dark blue and white; lower petals flushed white. $\frac{1}{2}$ ft. Pkt. 25 cts.
- 646 **Rose Queen.** Flowers mostly soft lilac-rose. $\frac{1}{2}$ ft. Pkt. 25 cts
- Sylvestris rosea** (See page 43)
- 648 **Mayfair Mixture.** Many beautiful varieties. Pkt. 15 cts.

Viola bosniaca (See page 43)

Wahlenbergia dalmatica (See page 43)

Wallflower (See annuals also)

Beautiful, double varieties, producing an abundance of handsome spikes of richly colored, fragrant flowers.

- 649 **Eastern Queen.** Bright chamois, changing to salmon-red. Pkt. 15 cts.
- 650 **Fire King.** Brilliant orange. 15 in. Pkt. 15 cts.
- 651 **Orange Bedder.** Rich orange, shading to apricot-yellow. Pkt. 20 cts.
- 653 **Mayfair Mixture.** A fine mixture of all shades of yellow and brown. Pkt. 15 cts.



OUR SPECIAL GARDEN LABELS

A wooden label 8 inches long, 1 inch wide, painted one coat. This label is wide enough to afford plenty of room for writing the longest plant name. Will last a year or more. Price—20 labels with marking pencil, 40 cts.; 100 labels with marking pencil. \$1.25.

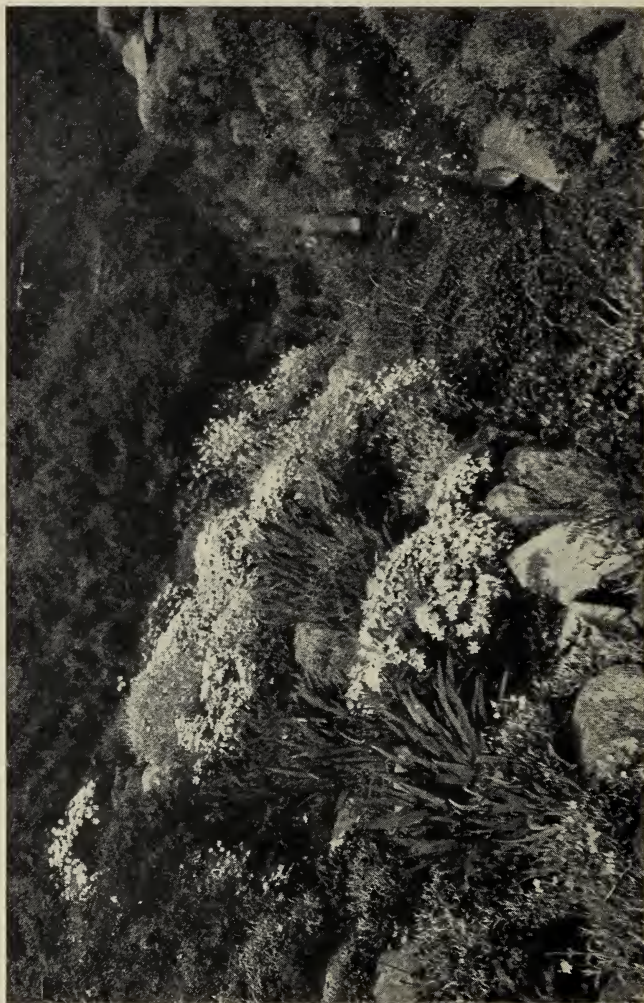


OUR SPECIAL GARDEN TROWELS

An extra heavy tool—all steel, invaluable for planting bulbs and transplanting seedlings; a gaudily painted handle lessens the chance of the tool being lost. Price, \$2.00.



Add delivery charges to your remittance for these items.



A Good Rock-garden Planting



SEEDS OF ROCK PLANTS

IN this list we are glad to offer a number of plants best fitted for rock-gardens. The increasing interest in rock-gardening has induced us to make a selection of many useful and some unusual kinds of perennials, most of which may be quite readily grown from seed.

METHOD OF SOWING ALPINES

The following method of planting alpine seeds is that used by the Royal Horticultural Society in their gardens at Wisley, England. They have found it very successful, for these plants come from cold climates and the seed seems to need to be frozen before germination takes place.

“Sow the seeds early in spring thinly in pots of finely prepared soil, which has been previously well-watered. Then cover the pans with a piece of glass and place them in an exposed position out of doors, where the earth in the pots can be frozen. After about six weeks the seed pots should be moved into the house, either a greenhouse or dwelling house where the temperature is about 60° and the germination then is generally very good.”

On the back of each of our seed packets will be found a number corresponding to the special requirements noted in our leaflet on the sowing of seeds.

- 660 Adonis vernalis** Yellow flowers with feathery, green foliage, blooming in summer. 1 ft. Pkt. 15 cts.
- 662 Aethionema grandiflorum** (Persian Candytuft). Rose flowers produced on long racemes, blooming from May to August. 12 to 18 in. Pkt. 25 cts.
- 663 Androsace carnea** (Rock Jasmine). Moss-like foliage with pink flowers in clusters. 3 in. Pkt. 25 cts.
- 664 Anemone pulsatilla** (The Pasque Flower). Deep purple flowers covered with silken hairs. $\frac{3}{4}$ ft. Pkt. 15 cts.
- 665 Anemone vernalis**. Flowers white tinted lilac and covered with silken hairs. A choice alpine. 5 in. Pkt. 25 cts.
- 666 Aquilegia flabellata**. Greyish green foliage with creamy-white flowers. A gem for the rock-garden. 10 in. Pkt. 25 cts.



- 668 **Arenaria balearica** (Sand Wort). A thick, quick-growing cover of dense, vivid green foliage; tiny, starry white flowers in summer. 2 in. Pkt. 25 cts.
- 669 **Aster alpinus, Goliath** (Blue Mountain Daisy). Dainty lilac flowers with yellow centers, blooming in July. 6 in. Pkt. 25 cts.
- 670 **Campanula barbata**. Pale porcelain-blue flowers. 1 ft. Pkt. 15 cts.
- 672 **Campanula pusilla**. A dwarf alpine producing a mass of dainty bells of various shades of blue. 3 in. Pkt. 40 cts.
- 673 **Cheiranthus linifolius**. An Alpine Wallflower. Mauve-colored, fragrant flowers which appear the first year from seed. 1 ft. Pkt. 25 cts.
- 674 **Dianthus alpinus** (The Alpine Pink). Beautiful, deep rose flowers. 4 in. Pkt. 40 cts.
- 675 **Dryas octopetala**. A creeping evergreen alpine, with large white flowers. Pkt. 30 cts.
- 676 **Erinus alpinus**. Pale purple flowers, blooming in early spring. 3 in. Pkt. 15 cts.
- 677 **Gentiana acaulis**. Rich, blue, trumpet-shaped flowers, blooming in early summer. 3 in. Pkt. 20 cts.
- 678 **Gentiana verna**. Intense brilliant blue flowers in spring. 3 in. Pkt. 25 cts.
- 680 **Gypsophila repens**. Blush-pink flowers, blooming continuously during the summer. 3 in. Pkt. 15 cts.
- 681 **Helianthemum mixed** (Sun Rose). Many brilliant colors during the summer; suitable for dry, sunny situations. $\frac{3}{4}$ ft. Pkt. 15 cts.
- 682 **Hypericum Coris**. Very dainty, miniature rock-plants with heath-like foliage and yellow flowers. 4 in. Pkt. 25 cts.
- 684 **Hypericum fragile**. Dainty yellow flowers. 4 in. Pkt. 30 cts.
- 685 **Linaria alpina** (Toad Flax). Light purple flowers resembling miniature Snapdragons. Trailing habit, with gray foliage. Will bloom the first season if started early. Sow where it is to grow, in old walls or among rocks. 3 in. Pkt. 15 cts.
- 686 **Linum alpinum**. A trailing plant for rock-work or pots. Blue flowers. 4 in. Pkt. 25 cts.
- 687 **Linum flavum** (Flax). Soft yellow flowers, fine for rock-work; needs protection over winter. Pkt. 15 cts.
- 688 **Lithospermum intermedium**. Bright blue flowers; bushy plants. $\frac{3}{4}$ ft. Pkt. 25 cts.
- 690 **Lychnis alpina**. Bright rose flowers in clusters; blooms in spring and early summer. 4 in. Pkt. 15 cts.
- 691 **Papaver alpinum, Mixed**. Miniature poppies of dainty colorings; white, rose, yellow and red. 6 in. Pkt. 25 cts.



- 692 **Primula denticulata cashmiriana**. Very handsome, dark lilac flowers; large, round heads of bloom on stems 12 inches tall. Pkt. 40 cts.
- 694 **Saxifraga decipiens grandiflora hybrids**. Shades from crimson through rose to pale blush and white; a beautiful rock-plant. 5 in. Pkt. 15 cts.
- 696 **Sedum kamtschaticum** (Orange Stonecrop). Brilliant and showy golden yellow flowers; plants of trailing habit. $\frac{1}{2}$ ft. Pkt. 15 cts.
- 697 **Silene acaulis**. (Moss Champion). Bright pink flowers rising from dense cushions of foliage. 3 in. Pkt. 25 cts.
- 698 **Silene alpestris** (Alpine Catchfly). Shining, white flowers, with fringed petals, blooming from May to July; it prefers a shady location in the rock-garden. 6 in. Pkt. 15 cts.
- 699 **Thymus Serpyllum** (Wild Mountain Thyme). Flowers rosy purple with hairy foliage. 2 in. Pkt. 15 cts.
- 700 **Tunica Saxifraga**. Charming, soft pink flowers blooming in summer. $\frac{1}{2}$ ft. Pkt. 25 cts.
- 702 **Veronica Guthrieana**. Dainty, bright blue flowers. $\frac{1}{2}$ ft. Pkt. 15 cts.
- 703 **Veronica incana**. Showy violet flowers and silvery grey foliage. $\frac{1}{2}$ ft. Pkt. 20 cts.
- 704 **Viola bosniaca**. An alpine species from Bosnia, with rosy pink flowers. 4 in. Pkt. 30 cts.
- 705 **Viola sylvestris rosea**. A charming alpine wood-violet, blooming in May. Flowers rose-colored. 6 in. Pkt. 30 cts.
- 706 **Wahlenbergia dalmatica**. Violet-blue, growing in clusters, with grass-like foliage; a rare alpine from Dalmatia. $\frac{1}{2}$ ft. Pkt. 25 cts.

Among the perennials, varieties marked (*) are also useful for rock-gardens.



BULBS OF GLADIOLI

WE are offering below a choice selection of the newer and finer Gladioli. We supply only young bulbs which, our experience leads us to believe, are required in order to maintain a stock to provide a succession of vigorous bulbs. Bulbs will be ready for delivery early in April, after the danger of freezing in transit is over.

Add postage to your remittance to cover delivery charges on these bulbs.

American Beauty. Deep carmine-rose with creamy yellow throat; large flower and long spikes. Single bulb, 20 cts.; 10 bulbs, \$1.70; 100 bulbs, \$15.

Anna Eberius. Bright purplish carmine, shaded brighter on lower petals; finely formed flower. Single bulb, 15 cts.; 10 bulbs, \$1; 100 bulbs, \$8.

Attraction. Soft cerise-red with large, pure white throat and conspicuous white mid-ribs; good spike. Single bulb, 15 cts.; 10 bulbs, \$1.20; 100 bulbs, \$10.

Byron L. Smith. Lavender-mauve; a most unusual color. Single bulb, 15 cts.; 10 bulbs, \$1.20; 100 bulbs, \$10.

Chateau Thierry. Bright scarlet, with white throat and conspicuous midribs of scarlet; enormous flower on good stem. Single bulb, 15 cts.; 10 bulbs, \$1.20; 100 bulbs, \$10.

Crimson Glow. Vivid scarlet, shading to lighter at throat; splendid, strong spikes. Single bulb, 15 cts.; 10 bulbs, \$1.20; 100 bulbs, \$10.

Dorothy McKibben. Rose, flushed and striped crimson; large flower with wavy petals. Single bulb, 20 cts.; 10 bulbs, \$1.50; 100 bulbs, \$12.

Dr. Elkins. White with purple blotch on lower petals; a splendid sport of Mrs. Frank Pendleton. Single bulb, 30 cts.; 10 bulbs, \$2.50; 100 bulbs, \$20.

Evelyn Kirtland. Clear salmon-pink, with scarlet blotch. Single bulb, 15 cts.; 10 bulbs, \$1; 100 bulbs, \$8.

Flora. Soft canary-yellow, with faint pink stripe on lower petals. Single bulb, 15 cts.; 10 bulbs, \$1.20; 100 bulbs, \$10.

General Joffre. Scarlet-red, shaded deeper. Single bulb, 15 cts.; 10 bulbs, \$1.20; 100 bulbs, \$10.



- Golden King.** Lemon-yellow, shaded deeper with dark crimson blotch in throat; not a large flower but one of the few varieties in this color. Single bulb, 25 cts.; 10 bulbs, \$2.20; 100 bulbs, \$20.
- Golden Measure.** Self-colored yellow; large flower and fine spike. Single bulb, 20 cts.; 10 bulbs, \$1.50; 100 bulbs, \$12.
- Gretchen Zang.** Beautiful rose-pink, suffused deeper with deep pink blotch in throat. Single bulb, 15 cts.; 10 bulbs, \$1; 100 bulbs, \$8.
- Halley.** Salmon-red with yellowish throat. Single bulb, 10 cts.; 10 bulbs, 70 cts.; 100 bulbs, \$5.
- Herada.** Pure mauve; large flowers of splendid character on tall stems. Single bulb, 15 cts.; 10 bulbs, \$1; 100 bulbs, \$8.
- J. A. Carbone.** Salmon, shaded orange, with white throat and mid-ribs; large flower. Single bulb, 30 cts.; 10 bulbs, \$2.50; 100 bulbs, \$22.
- John M. Good.** Very pale primrose; magnificent spike of very large flowers. Single bulb, 25 cts.; 10 bulbs, \$2; 100 bulbs, \$18.
- Le Marechal Foch.** Very large, open flower of beautiful apple-blossom-pink, with deeper stripe. Single bulb, 10 cts.; 10 bulbs, 80 cts.; 100 bulbs, \$6.
- Louise.** Orchid-lavender; good size flowers on strong spike. Single bulb, 15 cts.; 10 bulbs, \$1.20; 100 bulbs, \$10.
- Mary Pickford.** Beautiful white flower with creamy yellow base. Single bulb, 15 cts., 10 bulbs, \$1.20; 100 bulbs, \$10.
- Mona Lisa.** Soft rose-pink; a delicately ruffled flower of great beauty. Single bulb, 15 cts.; 10 bulbs, \$1.20; 100 bulbs, \$10.
- Mr. Mark.** Lilac-blue with yellow throat and purple blotch; one of the best of the lavenders. Single bulb, 20 cts.; 10 bulbs, \$1.50; 100 bulbs, \$12.
- Mrs. Dr. Norton.** Very pale pink, shading to creamy yellow at throat; petals ruffled at edge, with crimson blotch at base. Single bulb, 15 cts.; 10 bulbs, \$1; 100 bulbs, \$8.
- Mrs. Frank Pendleton.** Bright rose, with crimson blotch. Single bulb, 10 cts.; 10 bulbs, 80 cts.; 100 bulbs, \$6.
- Mrs. G. W. Moulton.** Soft ruby-red, large, ruffled flowers; a beautiful and unusual color and a good spike. Single bulb, 20 cts.; 10 bulbs, \$1.50; 100 bulbs, \$12.
- Mrs. H. E. Bothin.** Salmon-pink with fiery scarlet blotch; much ruffled. Single bulb, 20 cts.; 10 bulbs, \$1.50; 100 bulbs, \$12.
- Mrs. Leon Douglas.** Bright rose-pink, lemon yellow on lower petals; wide open, very large flower on tall stem. One of the very finest of the newer kinds. Single bulb, 25 cts.; 10 bulbs, \$2; 100 bulbs, \$18.
- Muriel.** Rosy mauve with large crimson blotch. Single bulb, 20 cts.; 10 bulbs, \$1.70; 100 bulbs, \$15.



- Odin.** Deep coral-pink with striking crimson blotch; a very bright, clear color. Single bulb, 15 cts.; 10 bulbs, \$1; 100 bulbs, \$8.
- Opaline.** Brilliant scarlet with white throat; very large and showy flower. Single bulb, 40 cts.; 10 bulbs, \$3.50; 100 bulbs, \$30.
- Panama.** Self-colored lavender-pink with deeper throat; large, open flower. Single bulb, 10 cts.; 10 bulbs, 80 cts.; 100 bulbs, \$6.
- Peach Rose.** Velvety deep rose, with carmine blotches in the white throat; large flowers of a very bright shade on a big spike. Single bulb, 25 cts.; 10 bulbs, \$2; 100 bulbs, \$18.
- Pink Perfection.** Bright rose, stippled deeper, with crimson throat. Single bulb, 20 cts.; 10 bulbs, \$1.50; 100 bulbs, \$12.
- Pink Wonder.** White, suffused soft rose-pink, paler in the throat; very large, wide open flowers. Single bulb, 20 cts.; 10 bulbs, \$1.50; 100 bulbs, \$12.
- Prince of Wales.** Soft terra-cotta shaded salmon; a beautiful, big flower on a good stem. Single bulb, 15 cts.; 10 bulbs, \$1; 100 bulbs, \$8.
- Radium.** Peach-pink; the two lower petals white with crimson markings; a lovely color. Single bulb, 20 cts.; 10 bulbs, \$1.70; 100 bulbs, \$15.
- Red Canna.** Clear crimson; very tall and a splendid cut flower variety. Single bulb, 15 cts.; 10 bulbs, \$1; 100 bulbs, \$8.
- Reverend Ewbank.** Lavender, with deeper color in throat, slightly marked garnet. Single bulb, 20 cts.; 10 bulbs, \$1.70; 100 bulbs, \$15.
- Rose Ash.** Unique combination of soft red and pale pink; very long spike and a strong grower. Single bulb, 20 cts.; 10 bulbs, \$1.50; 100 bulbs, \$12.
- Thomas T. Kent.** Peach-pink, with brilliant scarlet blotch; petals very much ruffled; very large flower. Single bulb, 20 cts.; 10 bulbs, \$1.50; 100 bulbs, \$12.
- Vesta Tilley.** Pale pink with small purple blotch. Single bulb, 15 cts.; 10 bulbs, \$1.20; 100 bulbs, \$10.
- Virginia.** Deep rose-red with paler throat; very large flowers on fine spike. Single bulb, 15 cts.; 10 bulbs, \$1.20; 100 bulbs, \$10.
- White City.** Fine white when open; buds tinted pink. Single bulb, 20 cts.; 10 bulbs, \$1.50; 100 bulbs, \$12.
- White Glory.** Pure white, with steel blue throat; ruffled flowers. Single bulb, 20 cts.; 10 bulbs, \$1.50; 100 bulbs, \$12.

Primulinus Varieties

The flowers of this class are borne loosely on rather long spikes, the upper petal being hooded over the others in an attractive manner. As a rule, the colors are bright and showy.



- Alice Tiplady.** Rich orange, shaded paler. Single bulb, 15 cts.; 10 bulbs, \$1; 100 bulbs, \$8.
- Dorothy Wheeler.** Soft salmon-pink, stippled deeper on edges yellow throat with crimson markings. Single bulb, 15 cts.; 10 bulbs, \$1; 100 bulbs, \$8.
- Flaming Sword.** Brilliant red; a new, large-flowered variety, blooming very early. Single bulb, 20 cts.; 10 bulbs, \$1.60; 100 bulbs, \$14.
- Myra.** Soft salmon-pink; yellow throat with crimson stripes; a lovely flower, very much hooded. Single bulb, 15 cts.; 10 bulbs, \$1; 100 bulbs, \$8.
- Orange Queen.** Orange-yellow, tinged apricot; a very striking novelty. Single bulb, 20 cts.; 10 bulbs, \$1.70; 100 bulbs, \$15.
- Rose Luisante.** Deep pink with a tall good spike; early. Single bulb, 20 cts.; 10 bulbs, \$1.50; 100 bulbs, \$12.
- Souvenir.** Clear pale yellow; very early and a beautiful large flower. Single bulb, 15 cts.; 10 bulbs, \$1.20; 100 bulbs, \$10.
- Yellow Prince.** Bright flame-orange, shaded deeper. Single bulb, 15 cts.; 10 bulbs, \$1.20; 100 bulbs, \$10.



Culture

Plant 2 inches deep in spring after all danger from frost is over. For succession of bloom plant at intervals of two weeks, but all bulbs should be in the ground before the first of June. The bulbs are not hardy and should be dug immediately after the first frost in the autumn and kept in a cool dry place all winter.

The Mayfair Collection of Gladioli

One bulb of each of 10 varieties, our selection, in a representative range of colors, chosen from the above list for \$1.50.

Five bulbs of each of 10 varieties or 50 bulbs in all, selected from our list of extra-choice kinds for \$6.00.

M E M O R A N D U M

Amount Brought Forward

Total for Bulbs

PLEASE ENCLOSE YOUR CHEQUE WITH THIS ORDER

Filled

Shipped

To Follow



