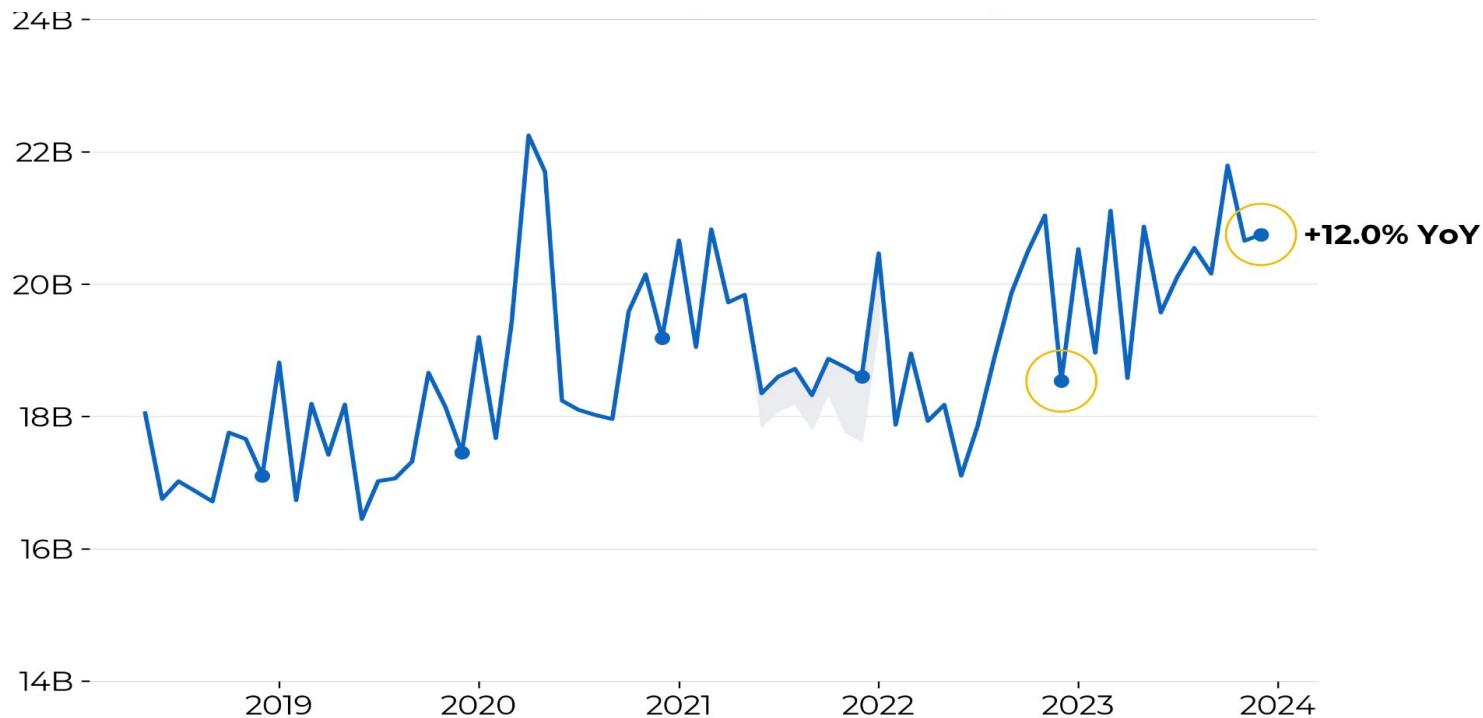


December 2023 Wikimedia movement metrics

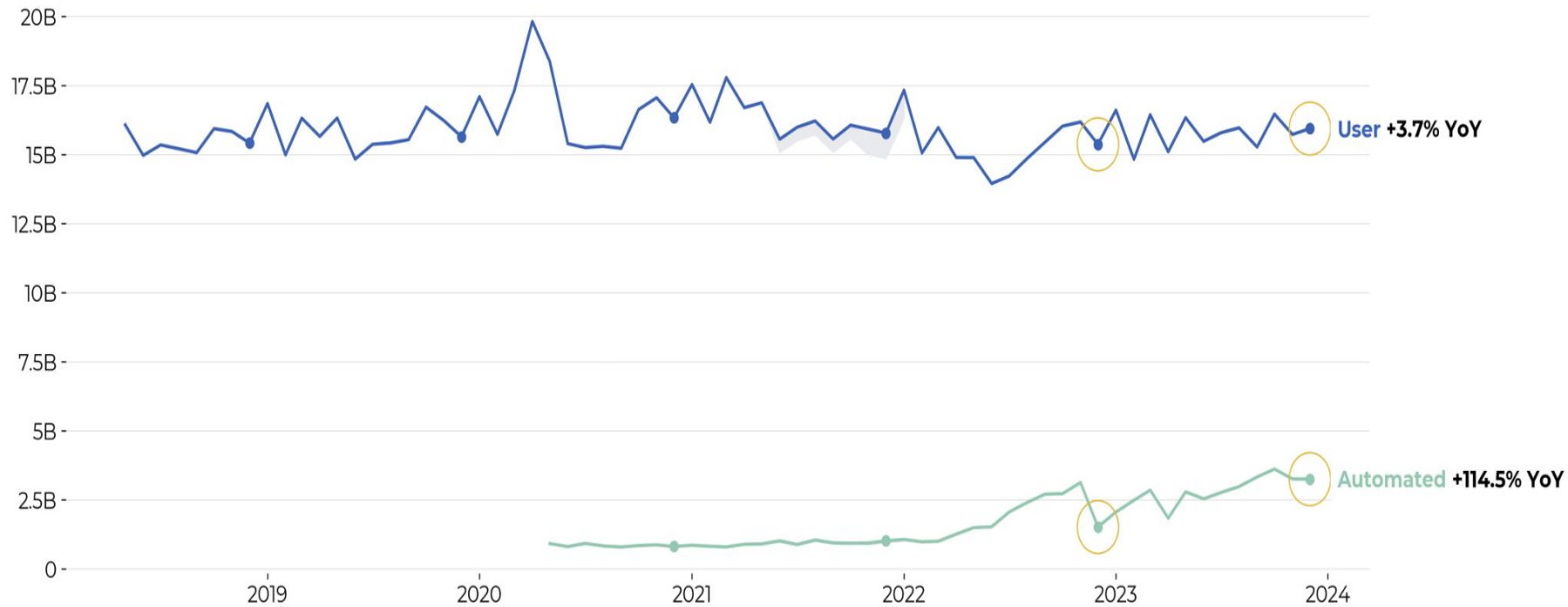
Content interactions (December): Across Wikimedia, there were 20.7B content interactions in December, a 12% YoY increase



Graph Notes: Created by Movement Insights on 2024-01-16 using data from <https://github.com/wikimedia-research/Reader-movement-metrics>

Explore [Content Metrics](#), [Readers Metrics](#) and [Editors Metrics](#) in Superset. Monthly aggregates are also available in Sheets: [Editors & Content](#) and [Readers](#). For metric definitions, see the [Product data glossary](#). For questions: [#insights-and-data](#)

Pageviews (December): Content interactions were primarily driven by a large increase in automated pageviews. User pageviews increased by 4% YoY



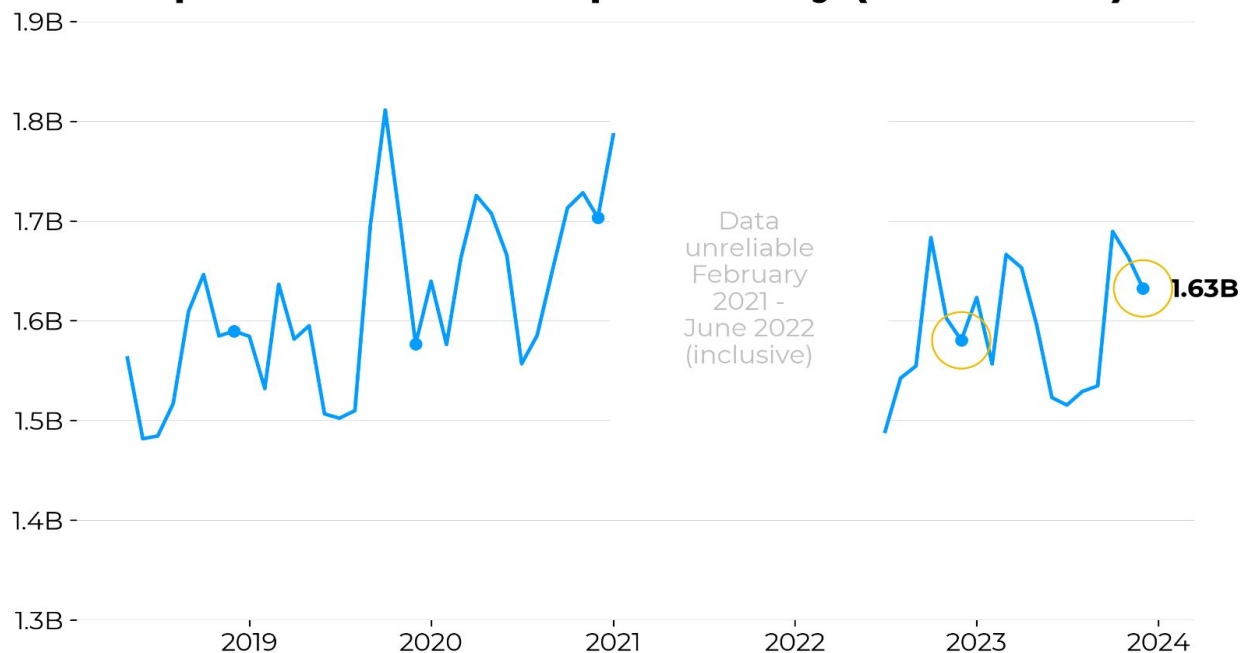
Graph Notes: Created by Movement Insights on 2024-01-16 using data from <https://github.com/wikimedia-research/Reader-movement-metrics>

Explore [Content Metrics](#), [Readers Metrics](#) and [Editors Metrics](#) in Superset. Monthly aggregates are also available in Sheets: [Editors & Content](#) and [Readers](#). For metric definitions, see the [Product data glossary](#). For questions: [#insights-and-data](#)

Unique devices increased YoY

December's data reveals continued growth with a 4% YoY increase and the count of unique devices rising to approximately 1.6 billion

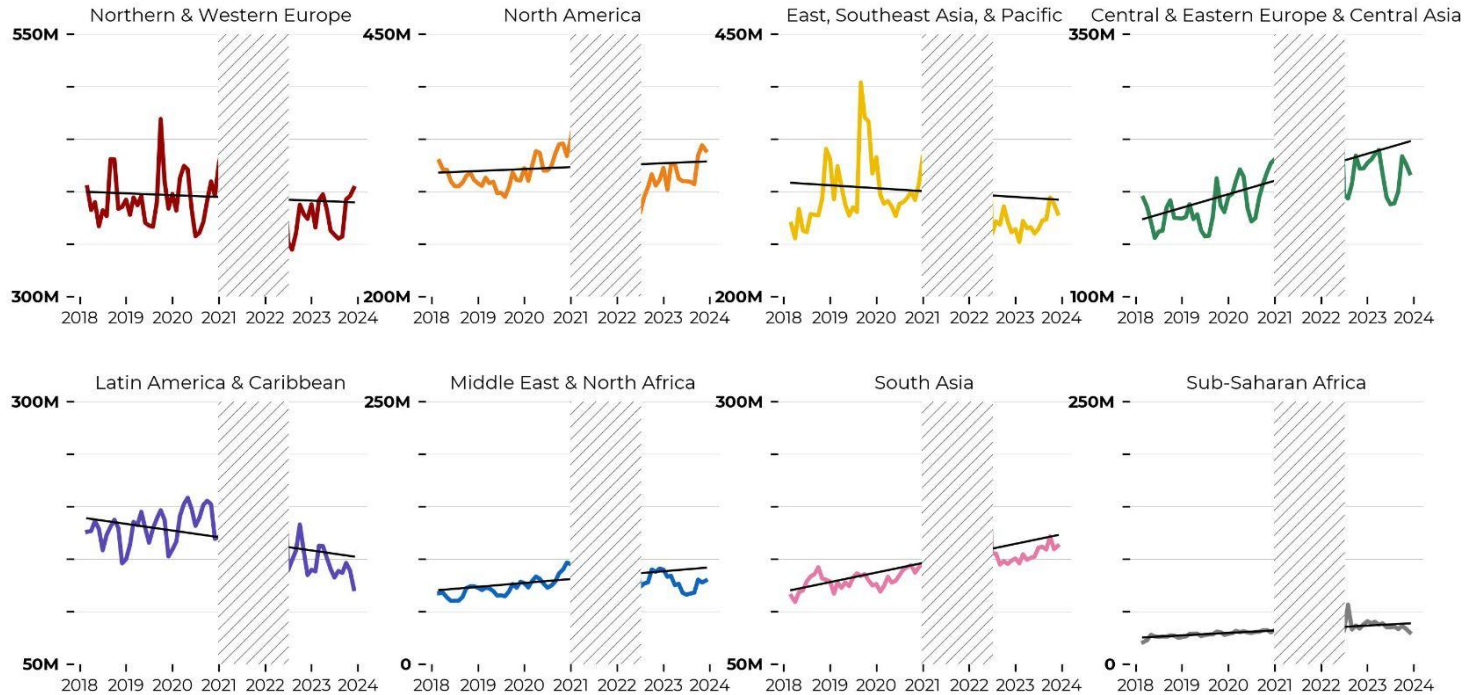
Unique Devices - Wikipedia Only (December)



Graph Notes: Created by Movement Insights on 2024-01-09 using data from <https://github.com/wikimedia-research/Readers-movement-metrics>

Regional Unique Devices (December)

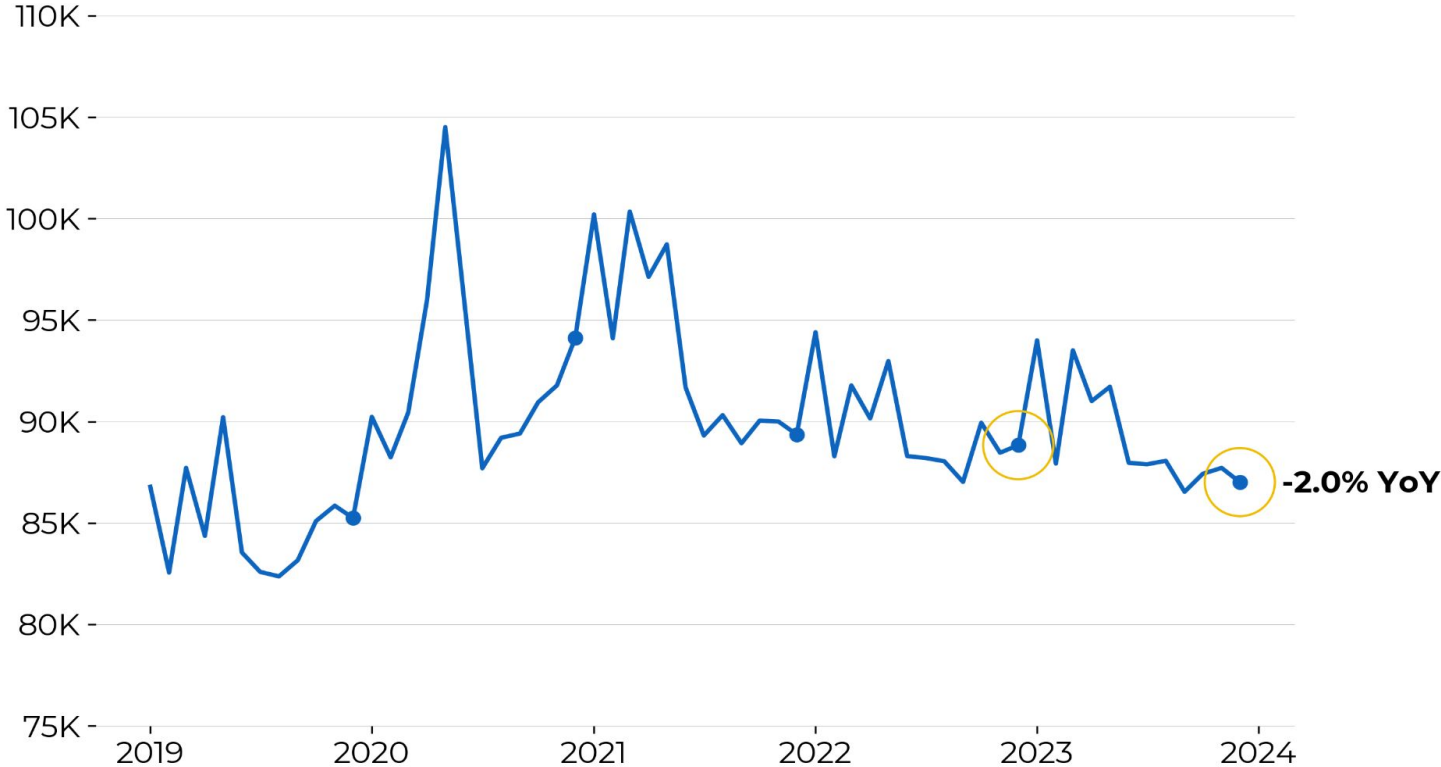
▨ Data unreliable [February 2021 - June 2022] (period not shown)



Graph Notes: Created by Movement Insights 2024-01-09 using data from https://docs.google.com/spreadsheets/d/13XrrnCaz9qsKs5Gu_lUs2jtsK9VrSiGIilCleDgR6KM

Explore [Content Metrics](#), [Readers Metrics](#) and [Editors Metrics](#) in Superset. Monthly aggregates are also available in Sheets: [Editors & Content](#) and [Readers](#). For metric definitions, see the [Product data glossary](#). For questions: [#insights-and-data](#)

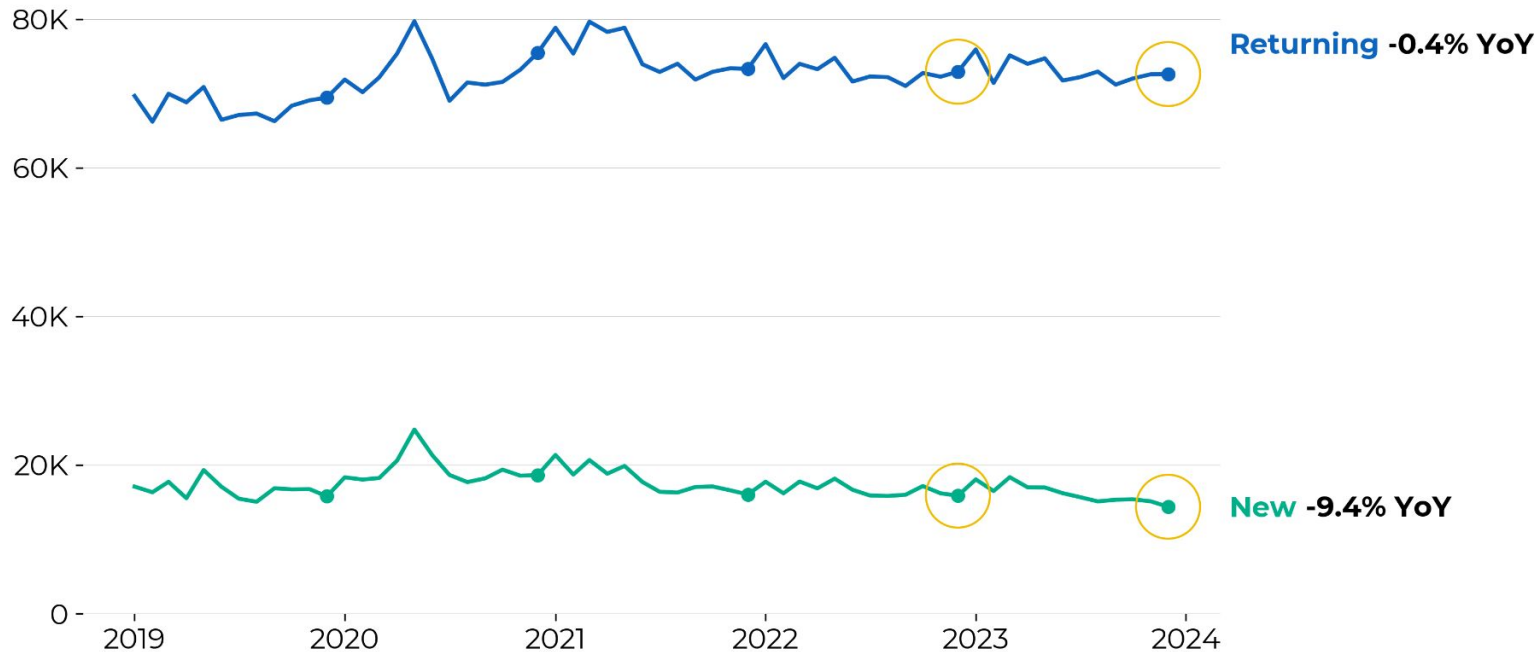
Active editors decreased by 2% YoY to 87k in December



Graph Notes: Created by Movement Insights on 2024-01-09 using data from <https://github.com/wikimedia-research/Editing-movement-metrics>

Explore [Content Metrics](#), [Readers Metrics](#) and [Editors Metrics](#) in Superset. Monthly aggregates are also available in Sheets: [Editors & Content](#) and [Readers](#). For metric definitions, see the [Product data glossary](#). For questions: [#insights-and-data](#)

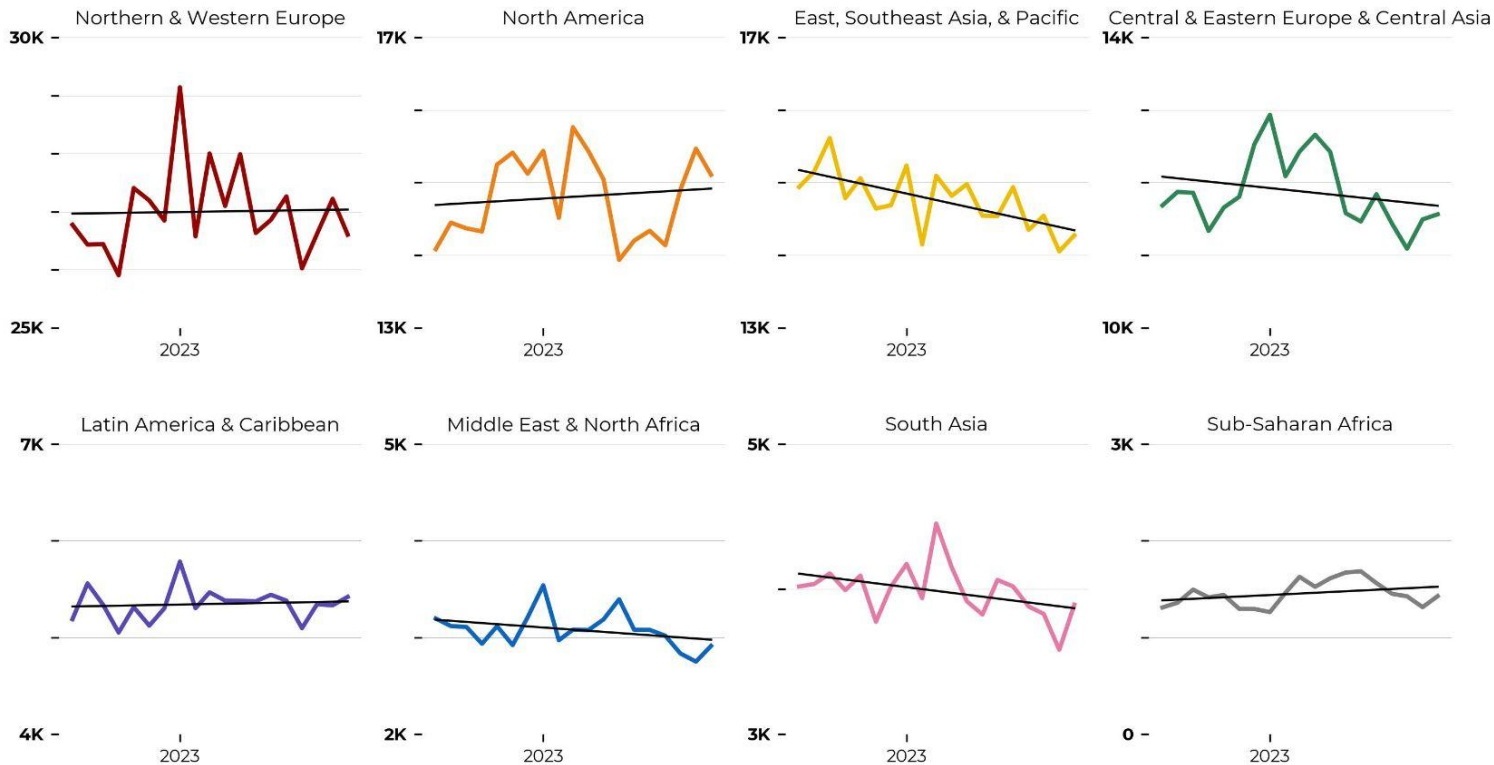
In December, returning editors decreased slightly by 0.4% YoY while new editors decreased significantly by 9.4% compared to this time last year.



Graph Notes: Created by Movement Insights on 2024-01-16 using data from <https://github.com/wikimedia-research/Editing-movement-metrics>

Explore [Content Metrics](#), [Readers Metrics](#) and [Editors Metrics](#) in Superset. Monthly aggregates are also available in Sheets: [Editors & Content](#) and [Readers](#). For metric definitions, see the [Product data glossary](#). For questions: [#insights-and-data](#)

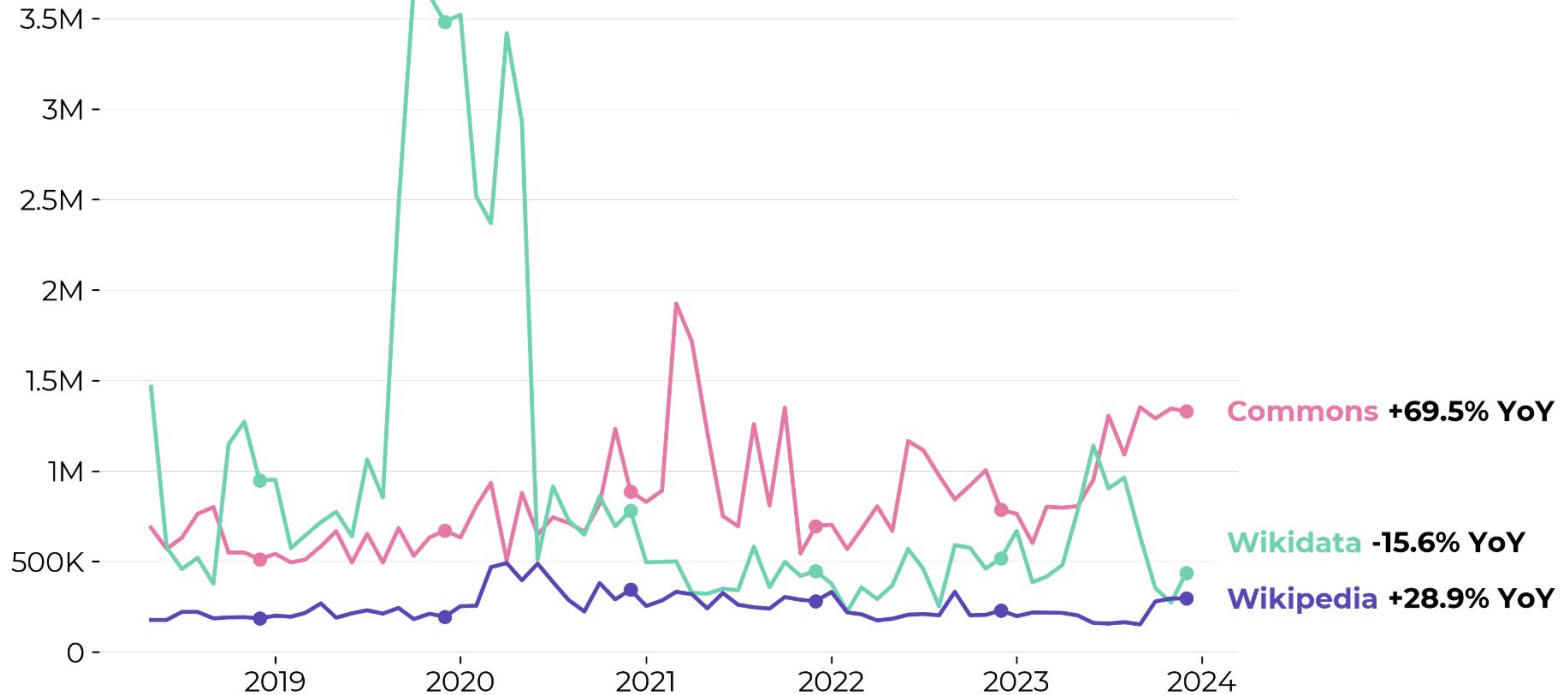
Regional Active Editors (December)



Graph Notes: Created by Movement Insights 2024-01-09 using data from https://docs.google.com/spreadsheets/d/13XrrnCaz9qsKs5Gu_lUs2jtsK9VrSiGlllCleDgR6KM

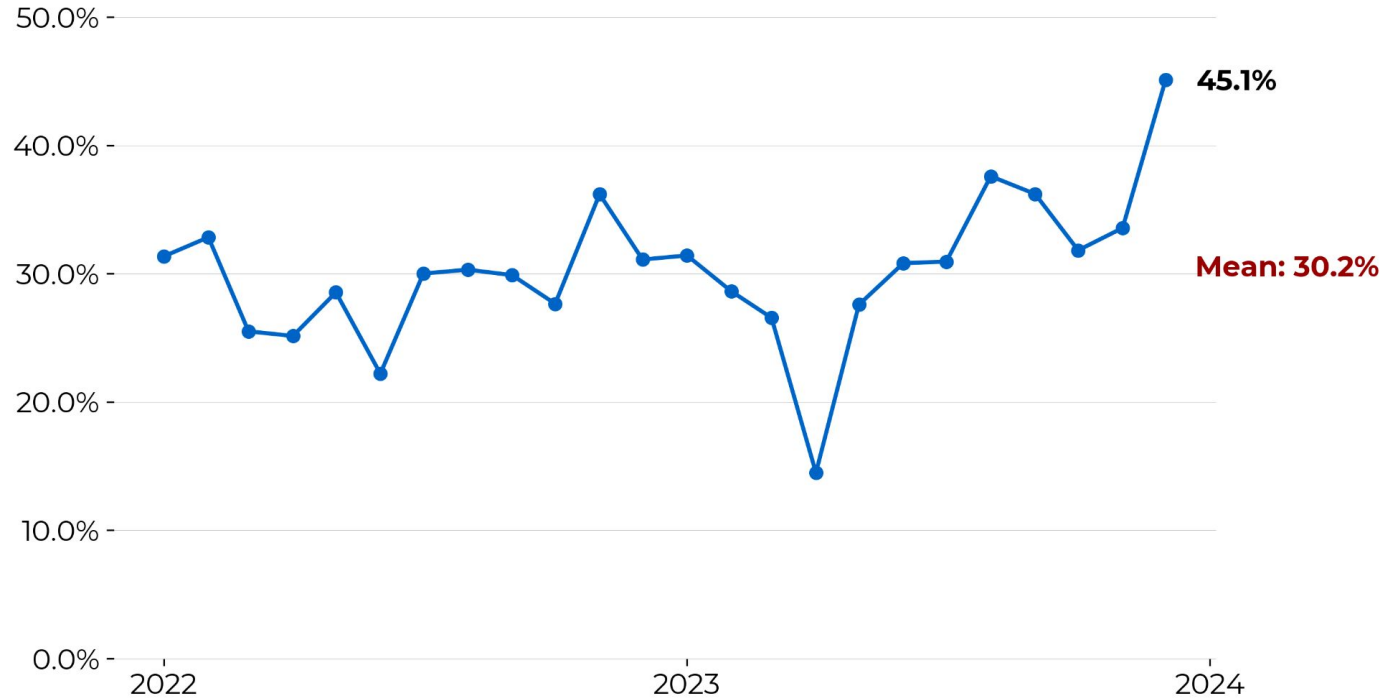
Explore [Content Metrics](#), [Readers Metrics](#) and [Editors Metrics](#) in Superset. Monthly aggregates are also available in Sheets: [Editors & Content](#) and [Readers](#). For metric definitions, see the [Product data glossary](#). For questions: [#insights-and-data](#)

In December, net new content increased on Wikipedia and decreased on Wikidata. Commons content continued to increase.



Graph Notes: Created by Movement Insights on 2024-01-09 using data from <https://github.com/wikimedia-research/Editing-movement-metrics>

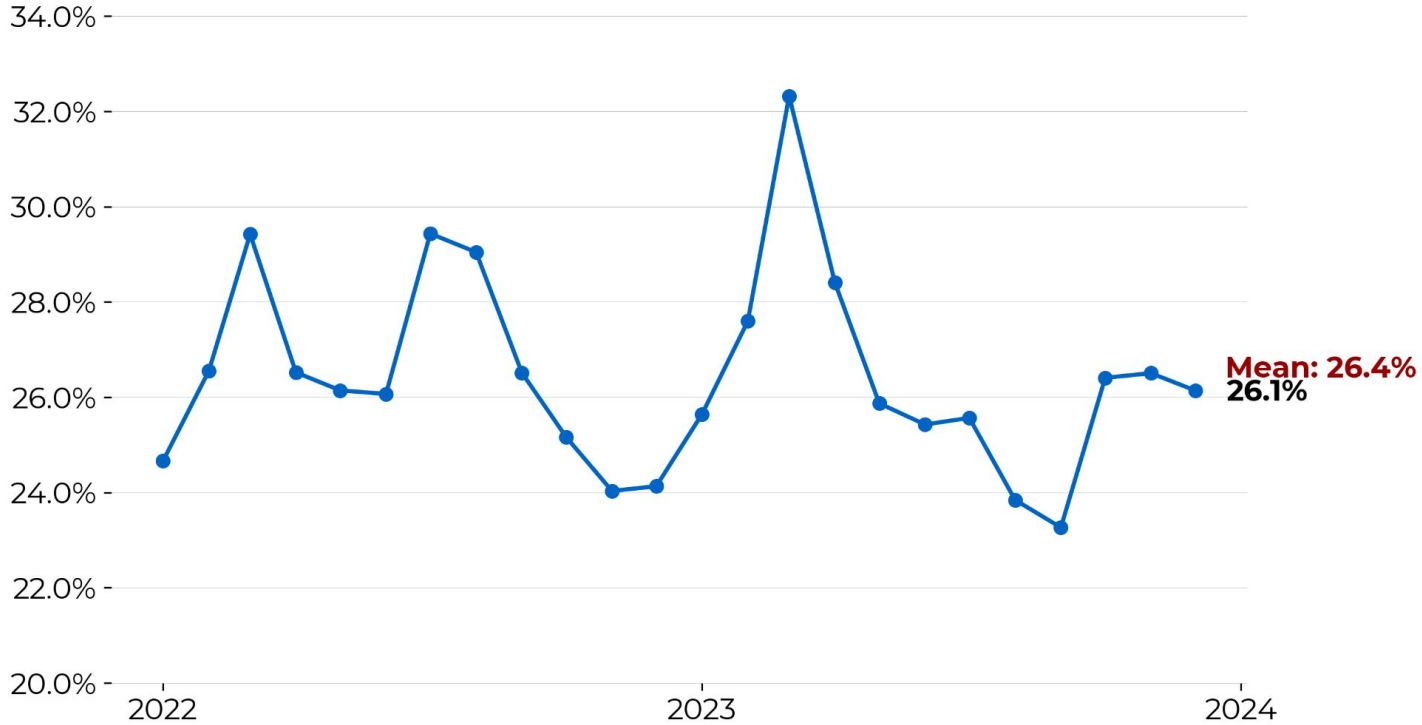
In December, the percentage of new articles about underrepresented regions increased to 45.1%. This was in part due to a large drop in new quality articles about Northern & Western Europe.



Graph Notes: Created by Movement Insights on 2024-01-26 using data from the Knowledge Gap Index

Explore [Content Metrics](#), [Readers Metrics](#) and [Editors Metrics](#) in Superset. Monthly aggregates are also available in Sheets: [Editors & Content](#) and [Readers](#). For metric definitions, see the [Product data glossary](#). For questions: [#insights-and-data](#)

In December, the percentage of new biographical articles about women and gender diverse people decreased slightly to 26.1%



Graph Notes: Created by Movement Insights on 2024-01-26 using data from the Knowledge Gap Index

Explore [Content Metrics](#), [Readers Metrics](#) and [Editors Metrics](#) in Superset. Monthly aggregates are also available in Sheets: [Editors & Content](#) and [Readers](#). For metric definitions, see the [Product data glossary](#). For questions: [#insights-and-data](#)