

5 SEP 1942



SHIP NO 534 MIDSHIP SECTION.

SCALE: ONE FOOT.

TO CLASS 100 A1 WITH FREEBOARD AT LLOYD'S SPECIAL SURVEY
8.5 X

THE SCANTLINGS ARE SUITABLE FOR A DRAUGHT OF 26'-9" EXTREME.

DIMENSIONS: - 425'-0" B.P. ON L.W.L. x 56'-0" M^{LD} 56'-3" EXT. x 28'-8" FLAT SHEER M^{LD} TO 2ND D^{CK}

LLOYDS NUMERALS TO NORMAL SHEER

FIRST LONGITUDINAL NUMBER L x D = 425'-0" x 36'-7 1/2"	= 15193.75
SECOND LONGITUDINAL NUMBER L x (B+D) = 425'-0" x (56'-0" + 35'-7 1/2")	= 38993.75
1/2 D TO UPPER DECK = 425'-0" - 36'-7 1/2"	= 11-27
D MOULDED DEPTH = 27'-7 1/2" + 8'-0"	= 35'-7 1/2"
d = 36'-7 1/2" - (9'-0" + 3'-7 1/2") - CREDIT FOR DEEPER KNEES & FRAME BRACKET = 23'-3"	

425 x 56 x 7.5 = 5240 x .768 = 5020

425 x 56 x 4 x 1.15 = 1070

80 x 56 x 7.5 x 1.15 = 63

6375
6440

EQUIPMENT NUMBER

SECOND LONGITUDINAL NUMBER = 425'-0" x (56'-0" + 36'-7 1/2")	= 39418.75
FORECASTLE = 40'-0" x 7'-6" x 3/4"	= 225.00
MIDSHIP ACCOMMODATION & CASING = 72'-2 1/2" x 8'-0" x 1/2"	= 289.00
SALOON ACCOMMODATION = 30'-0" x 8'-0" x 1/2"	= 120.00
EQUIPMENT NUMBER = 40052.75	

- EQUIPMENT**
- 2 BOWER ANCHORS 68 CWT EACH STOCKLESS
 - 1 STREAM ANCHOR 19 CWT EX-STOCK
 - 225 FATHOMS 2 3/8" STUD CHAIN CABLE 600 CWT
 - 90 FATHOMS 1 1/2" STREAM CHAIN OR 5' FLEXIBLE STEEL WIRE 6 X 12
 - 120 FATHOMS 4 3/8" SPECIAL FLEXIBLE STEEL WIRE 6 X 24
 - 2 HAWSEYS 90 FATHOMS 8" HEMP OR 2 1/4" FLEXIBLE STEEL WIRE 6 X 12
 - 2 WARPS 90 FATHOMS 7" HEMP OR 2 1/4" FLEXIBLE STEEL WIRE 6 X 12

RIVETING NOTE.

RIVETS IN FRAMES TO FLOORS AND CROSS THE PLATES IN AFT PEAK SPACED 5 DIA^S APART CR TO CR

RIVETS IN FRAMES TO SHELL AT FLAT OF DOUBLE BOTTOM FOR^{WD} HALF LENGTH FOR^{WD} SPACED 5 DIA^S (TWO COMPLETE ROWS)

RIVETS IN FRAMES TO FLOORS AT FLAT OF DOUBLE BOTTOM FOR^{WD} HALF LENGTH FOR^{WD} SPACED 6 DIA^S (TWO COMPLETE ROWS)

RIVETS IN SIDE FRAMES TO SHELL SPACED 6 DIA^S APART, 5 1/2 DIA^S APART IN WAY OF FORE & AFT PEAK FRAMES AND DEEP FRAMING FOR^{WD}

RIVETS IN BOTTOM FRAMES TO SHELL AFT HALF LENGTH FOR^{WD} SPACED 7 DIA^S APART CR TO CR

RIVETS IN 3R BUTTS OF OUTSIDE PLATING AND OF DECK STRINGER PLATES SPACED 3 1/2 DIA^S APART CR TO CR

RIVETS IN 4R BUTTS OF OUTSIDE PLATING AND OF DECK STRINGER PLATES SPACED 4 DIA^S APART CR TO CR

RIVETS IN SEAMS OF SHELL PLATING DECK PLATING AND INNER BOTTOM PLATING AS PER TABLE 40

RIVETS IN BUTTS OF DECK PLATING, INNER BOTTOM & MARGIN PLATING SPACED 4 DIA^S APART CR TO CR

RIVETS IN SEAMS & BUTTS OF BULKHEAD AND TUNNEL PLATING, MARGIN ANGLES AND WEATHER DECK STRINGER ANGLES AND BULKHEAD FRAME TO BULKHEAD SPACED 4 DIA^S APART CR TO CR

RIVETS IN FLAT KEEL ANGLES, VERTICAL ANGLES CONNECTING FLOORS TO CENTRE GIRDER AND SHELL PLATING OF WATERTIGHT BULKHEAD FRAME SPACED 5 DIA^S APART CR TO CR

RIVETS IN FRAMES TO FLOORS AFT HALF LENGTH FOR^{WD} REVERSE FRAMES TO FLOORS AND INNER BOTTOM PLATING

VERTICAL ANGLES TO FLOORS AND SIDE GIRDERS, IN BULKHEAD STIFFENERS (EXCEPT PEAK BULKHEADS) AND IN DECK PLATING TO BEAMS ON EVERY FRAME SPACED 7 DIA^S APART CR TO CR

RIVETS IN CENTRE GIRDER TOP ANGLES SPACED 7 DIA^S APART CR TO CR NON WATERTIGHT

RIVETS IN CENTRE GIRDER TOP ANGLES SPACED 5 DIA^S APART CR TO CR WATERTIGHT

THE SCANTLINGS OF ANGLE AND BULB ANGLE SECTIONS GIVEN ON THIS PLAN ARE N.B.S.

PLATE STEM, STERN POST AND RUDDER POST WILL BE SUBMITTED.

LIST OF ALTERNATIVE AMERICAN SECTIONS WITH CORRESPONDING N.B.S. EQUIVALENTS

N.B.S.	ALTERNATIVE AMERICAN
12" x 3 1/2" x 9/16" B.A.	12" x 50" x 3 1/2" x 32.9 LBS CHANNEL
12" x 3 1/2" x 62" B.A.	12" x 60" x 3 1/2" x 37 LBS CHANNEL
12" x 3 1/2" x 45" B.A.	12" x 45" x 3 1/2" x 30.9 LBS CHANNEL
12" x 3 1/2" x 7 1/2" B.A.	12" x 45" x 3 1/2" x 30.9 LBS CHANNEL
8" x 3 1/2" x 42" B.A.	8" x 3 1/2" x 46" B.A.
8" x 3" x 36" B.A.	8" x 3 1/2" x 38" B.A.
6" x 3 1/2" x 42" B.A.	6" x 3 1/2" x 46" B.A.
6" x 3" x 42" B.A.	6" x 3" x 46" B.A.
7 1/2" x 3" x 3 1/2" B.A.	8" x 3" x 34" B.A.
7 1/2" x 3" x 42" B.A.	8" x 3" x 34" B.A.
7" x 3" x 1/2" B.A.	8" x 3" x 52" B.A.
7" x 3" x 7/8" B.A.	7" x 3" x 38" B.A.
7" x 3" x 36" B.A.	7" x 3" x 38" B.A.
8" x 3" x 44" B.A.	8" x 3" x 46" B.A.
7" x 3" x 40" B.A.	7" x 3" x 44" B.A.

CENTRE GIRDER

434 x 58 FOR 1/2 LEN x .46 AT ENDS

62 IN BOILER SPACE BUTTS LAPPED & 3R

VERTICAL ANGLES 3 1/2 x 44 SINGLE 54 IN B.S.

5' x 5' 44" SINGLE UNDER ENGINE SPACE & THRUST

SEATING 5' x 5' 54" UNDER BOILER BEARERS

TRUNK TOP CENTRE STRAKE TO RULE 53" x 52" FOR 1/2 LEN

TO .44 AT ENDS, .52 IN ENGINE SPACE, .58 IN BOILER SPACE

FITTED 7 1/2 x 50 FOR 1/2 LEN TO .43 AT ENDS

.52 IN E.S. .58 IN B.S. BUTTS LAPPED & 3R TO 2R AT ENDS

CENTRE GIRDER TOP ANGLES 3 1/2 x 3 1/2 x .48 FOR 1/2 LEN

.44 AT ENDS .58 IN B.S.

ALTERNATIVELY 3 1/2 x 3 1/2 x .40 CONNECTION

INNER BOTTOM PLATING .44 FOR 1/2 LEN x .40 AT ENDS

.52 IN E.S. .58 IN B.S. BUTTS LAPPED & 2R

SEAMS LAPPED & 1R

TRUNK TOP CENTRE STRAKE TO RULE 53" x 52" FOR 1/2 LEN

TO .44 AT ENDS, .52 IN ENGINE SPACE, .58 IN BOILER SPACE

FITTED 7 1/2 x 50 FOR 1/2 LEN TO .43 AT ENDS

.52 IN E.S. .58 IN B.S. BUTTS LAPPED & 3R TO 2R AT ENDS

CENTRE GIRDER TOP ANGLES 3 1/2 x 3 1/2 x .48 FOR 1/2 LEN

.44 AT ENDS .58 IN B.S.

ALTERNATIVELY 3 1/2 x 3 1/2 x .40 CONNECTION

TRUNK TOP CENTRE STRAKE TO RULE 53" x 52" FOR 1/2 LEN

TO .44 AT ENDS, .52 IN ENGINE SPACE, .58 IN BOILER SPACE

FITTED 7 1/2 x 50 FOR 1/2 LEN TO .43 AT ENDS

.52 IN E.S. .58 IN B.S. BUTTS LAPPED & 3R TO 2R AT ENDS

CENTRE GIRDER TOP ANGLES 3 1/2 x 3 1/2 x .48 FOR 1/2 LEN

.44 AT ENDS .58 IN B.S.

ALTERNATIVELY 3 1/2 x 3 1/2 x .40 CONNECTION

TRUNK TOP CENTRE STRAKE TO RULE 53" x 52" FOR 1/2 LEN

TO .44 AT ENDS, .52 IN ENGINE SPACE, .58 IN BOILER SPACE

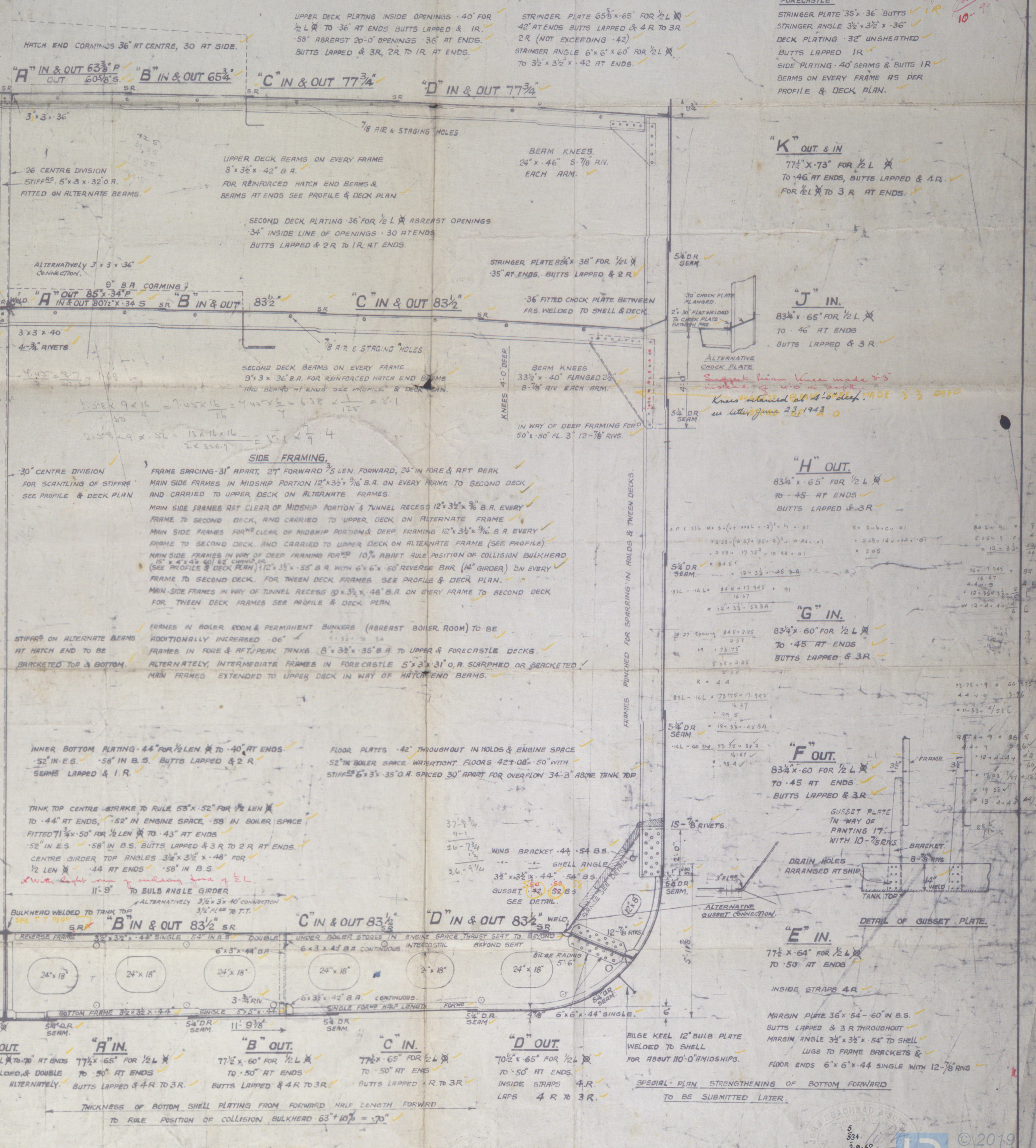
FITTED 7 1/2 x 50 FOR 1/2 LEN TO .43 AT ENDS

.52 IN E.S. .58 IN B.S. BUTTS LAPPED & 3R TO 2R AT ENDS

CENTRE GIRDER TOP ANGLES 3 1/2 x 3 1/2 x .48 FOR 1/2 LEN

.44 AT ENDS .58 IN B.S.

ALTERNATIVELY 3 1/2 x 3 1/2 x .40 CONNECTION



FORECASTLE

STRINGER PLATE 35 x 36 BUTTS

STRINGER ANGLE 3 1/2 x 3 1/2 x 36

DECK PLATING 32 UNSHEATHED

BUTTS LAPPED 1R

SIDE PLATING .40 SEAMS & BUTTS 1R

BEAMS ON EVERY FRAME AS PER PROFILE & DECK PLAN.

"K" OUT & IN

77 1/2 x 73 FOR 1/2 L

TO .46 AT ENDS, BUTTS LAPPED & 4R

FOR 1/2 L TO 3R AT ENDS.

"J" IN

83 1/2 x 65 FOR 1/2 L

TO .46 AT ENDS

BUTTS LAPPED & 3R

"H" OUT

83 1/2 x 65 FOR 1/2 L

TO .45 AT ENDS

BUTTS LAPPED & 3R

"G" IN

83 1/2 x 60 FOR 1/2 L

TO .45 AT ENDS

BUTTS LAPPED & 3R

"F" OUT

83 1/2 x 60 FOR 1/2 L

TO .45 AT ENDS

BUTTS LAPPED & 3R

"E" IN

77 1/2 x 64 FOR 1/2 L

TO .50 AT ENDS

INSIDE STRAPS 4R

MARGIN PLATE 36 x 54 - 60 IN B.S.

BUTTS LAPPED & 3R THROUGHOUT

MARGIN ANGLE 3 1/2 x 3 1/2 x 54 TO SHELL

LAGS TO FRAME BRACKETS & FLOOR ENDS 6 x 6 x 44 SINGLE WITH 12-7/8 RIVS

SPECIAL PLAN STRENGTHENING OF BOTTOM FORWARD TO BE SUBMITTED LATER.

N09



1
Midship Section
J Readhead & Sons

No 524.

T.C. 2.12.42.

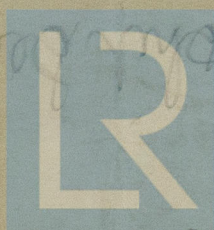
11.9.42.

KELMSCOTT

N/W "Queen ANNE"

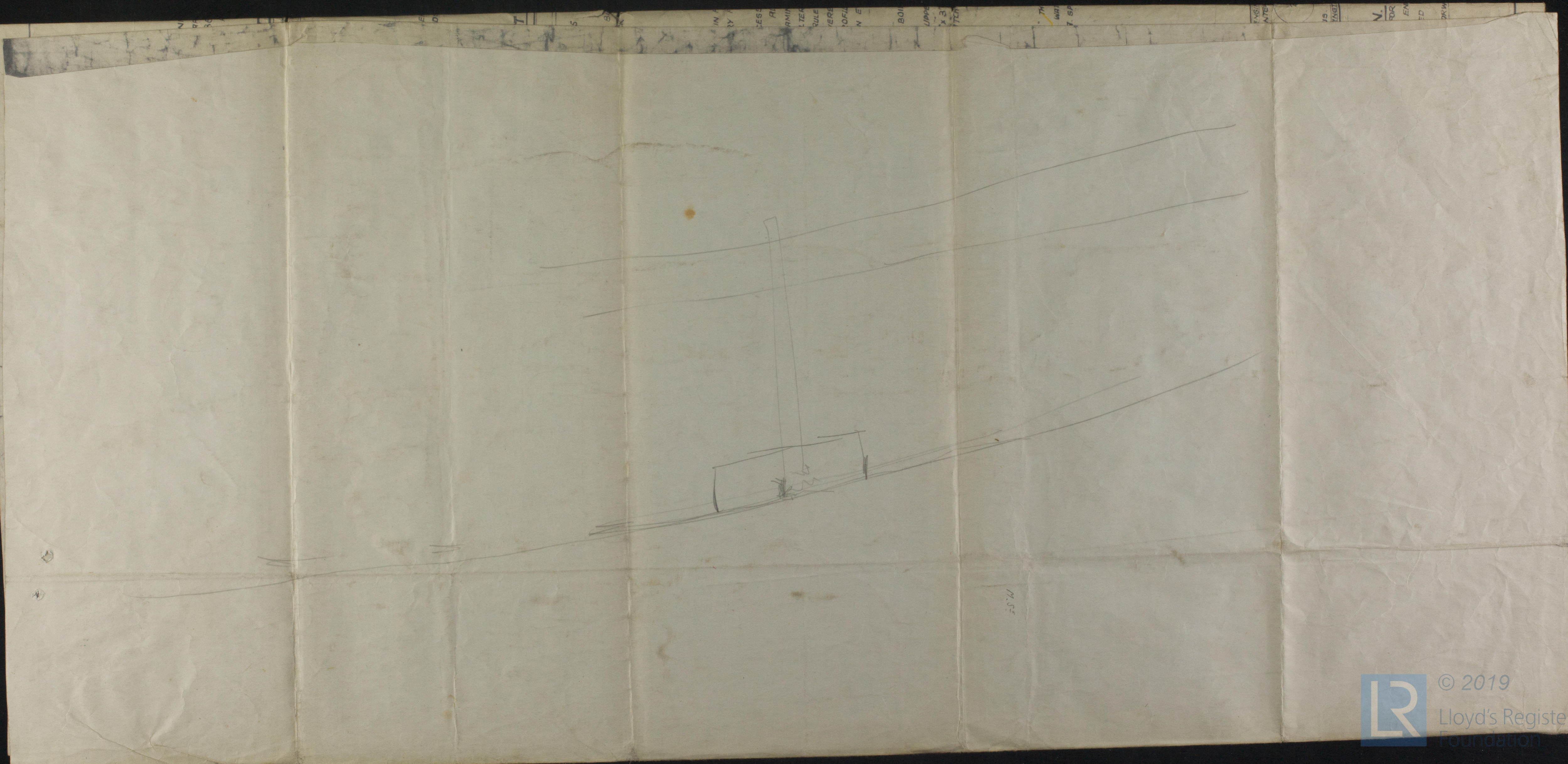
Readhead & Sons

© 2019



Lloyd's Register
Foundation

011207-011215-0126



M.S.



© 2019

Lloyd's Register
Foundation