

UC-NRLF



B 4 262 137

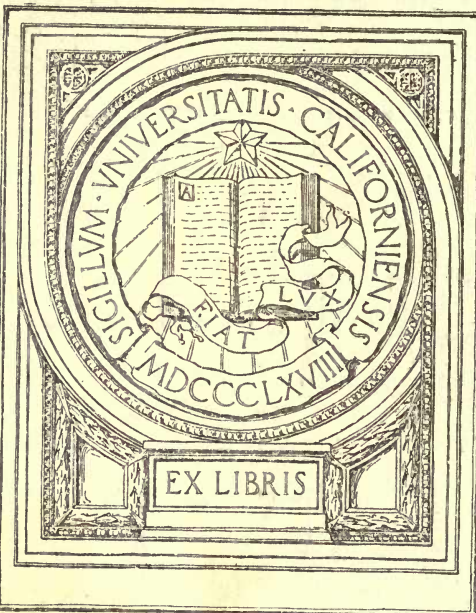
T

890

F3C3

GIFT OF

California A-Y-P Expositor Commission



EX LIBRIS

LIBRARY OF
CALIFORNIA

REPORT

California
Alaska-Yukon-Pacific Exposition
Commission

LIBRARY
OF THE
UNIVERSITY



GOVERNOR J. N. GILLETT, Commissioner.

J. A. FILCHER,
FRANK WIGGINS,

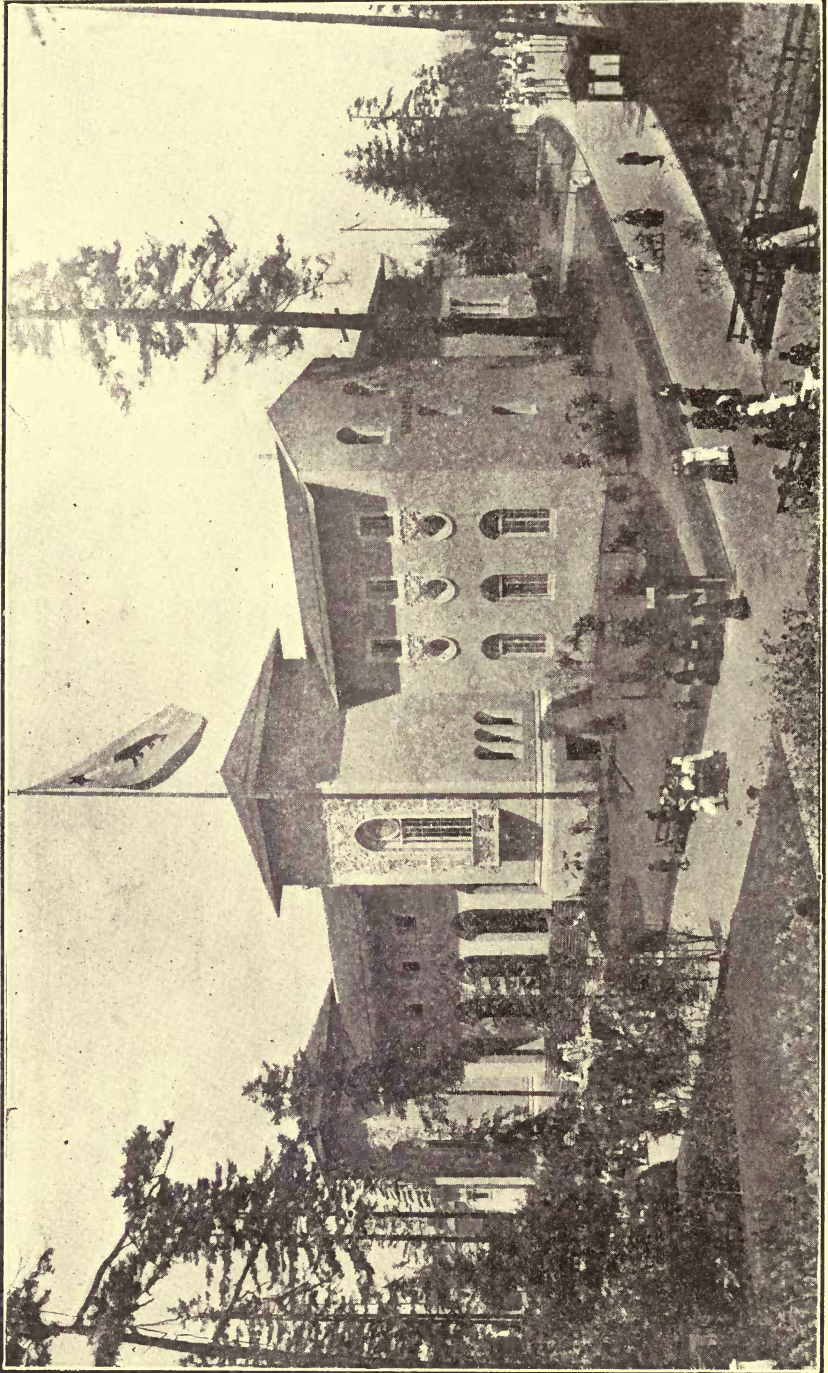
Governor's Representatives.

1910

1871
Commission

NO. 1000
ANNOUNCING

T890
F303



CALIFORNIA STATE BUILDING, SEATTLE EXPOSITION, 1909

Gift of Commission

Report of
GOVERNOR'S REPRESENTATIVES
for California at
Alaska-Yukon-Pacific Exposition

SACRAMENTO, CAL., DECEMBER 27, 1910.

To *Hon. James N. Gillett,*
Governor of California, and Ex-Officio Commissioner
Alaska-Yukon-Pacific Exposition.

Dear Sir:—

As your Representatives, charged with the details of California's representation at the Alaska-Yukon-Pacific Exposition, held at Seattle, Washington, from June 1st to October 15th, 1909, inclusive, we take pleasure in submitting to you the following report of our work.

It was right that California should aid and participate in a Western Exposition, and it was wise to make the appropriation for the purpose sufficient to insure a creditable representation of the State's resources. Accordingly, on your recommendation, the Legislature of 1907, set apart from the General Fund the sum of \$100,000, and authorized you, as Commissioner for California, through such Representatives as it might be your pleasure to appoint, to supervise the general expenditure of the appropriation in the erection of a suitable building on the Alaska-Yukon-Pacific Exposition grounds, and the collection and installation therein of such an exhibit as would do credit to the State, and exemplify in as striking and effective manner as possible the great variety and superior quality of California's products.

REPRESENTATIVES.

In accordance with the authority thus conferred it was your pleasure to appoint the undersigned to represent you in this work. You acted promptly and gave your Representatives ample time to take advantage of the seasons to secure samples of everything necessary for a complete display of the State's resources. To this one fact is due largely the greater completeness of the Seattle exhibit than any California had previously made. You also relieved your Representatives of possible embarrassment by allowing them to appoint their own

assistants and fix their compensation and term of service. In the exercise of this authority preference was given to those best qualified to perform the work required, and the term of employment depended on efficiency and good behavior. No help was hired that was not absolutely necessary, and no one was kept on the pay-roll a moment longer than his or her services were required. In short, it was our determined purpose from the start to try and secure maximum results at a minimum cost in every department of the work, to the end that the final outcome might be an improvement on any previous effort made by California of a similar character.

We considered this to be necessary, not only in deference to our own reputation, but more particularly for the credit and benefit of the State. You can understand if the display made at Seattle had been less complete or in any way less attractive than the one made at Portland, for instance, the impression created would be that those in charge were becoming careless, or that California was retrograding, a condition that would probably have resulted in as much harm as good, and largely or entirely neutralized the object of the Legislature in making the appropriation.

IMPROVEMENT IMPERATIVE.

We felt that we must improve on previous showings made by the State at other Expositions, or resign and ask that the responsibility be placed in other hands, or that the money be allowed to remain in the State Treasury. With a larger appropriation, corresponding with the larger expenditures in freight and numerous other items at Seattle as compared to Portland, the effort for an improved display would not have been difficult; but with the appropriation practically the same, considering the salvage benefit realized for Portland from California's exhibit the previous year at St. Louis, the planning, the economizing, the denials and the extra personal labor imposed in order to accomplish the desired result can never be fully appreciated, except by those who had immediate charge of the work. These efforts were made the more difficult by reason of California's reputation for open handed hospitality, and the ever present consciousness that nothing must be done or left undone that might tend to impair that reputation. You can understand it is no easy task to maintain a show of generous hospitality all day, and then set up at night to figure out how you can do the same thing to-morrow without unduly impairing a limited revenue.

BUILDING AND EXHIBITS SUPERIOR.

But we did it. We built the best and second largest State Building ever erected at a World's Fair; we collected and installed the most complete and most attractive exhibit of California's resources that the State ever made; we maintained stereoptican lectures, gave out verbal information to all inquirers, and distributed attractive literature; we gave frequent receptions and dispensed true California hospitality; we filled the measure of our aim; we did what we believe the State expected us to do, and it is a proud moment now the work is ended and we are able to record the fact that we did it without exceeding the appropriation.

THE CALIFORNIA BUILDING.

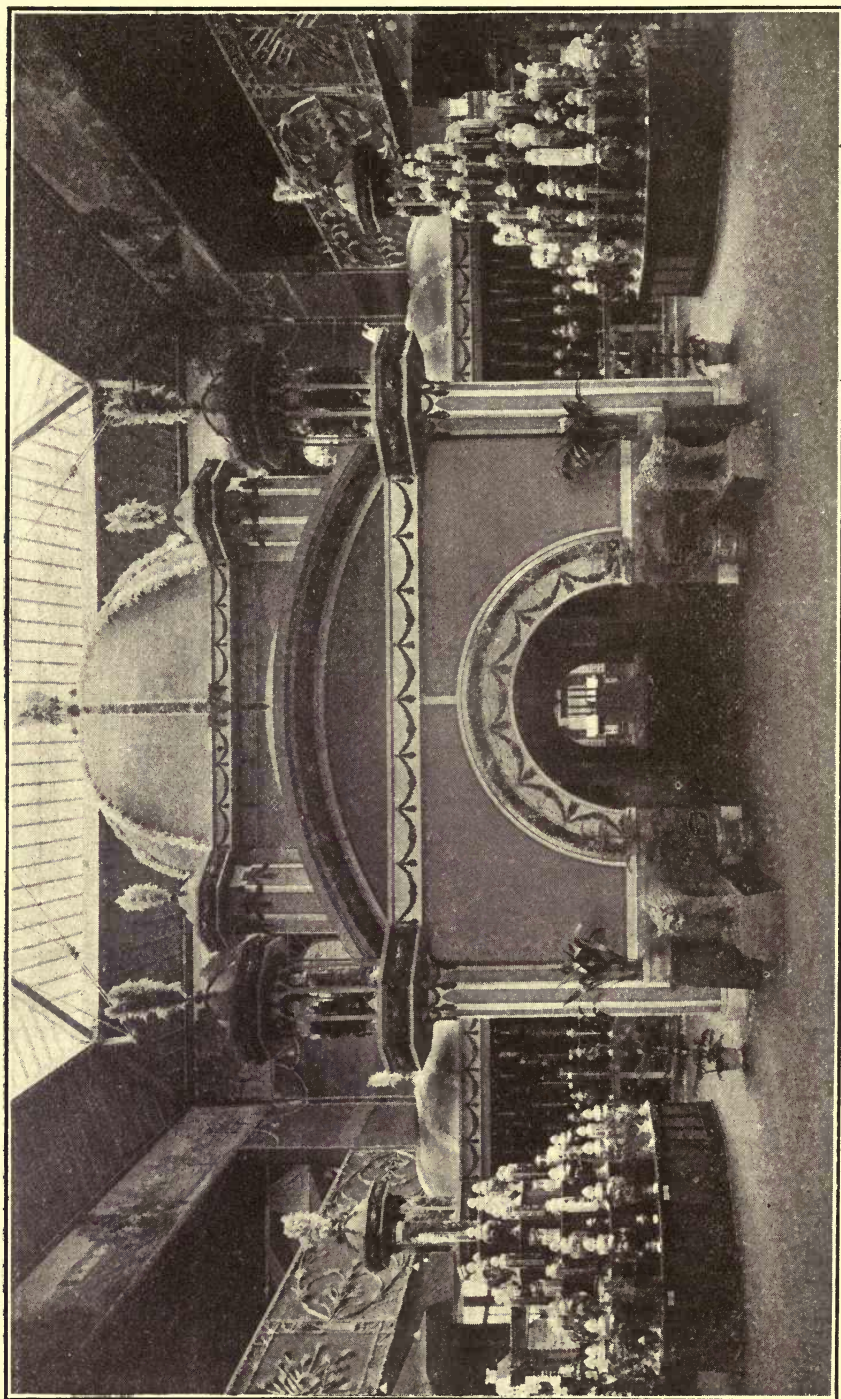
The California building was of the Spanish renaissance style of architecture. The broad steps that led up to the five large arches which opened on to the wide portico or colonnade were eighty feet long, and through any of the five broad doors that fronted the arches visitors entered the main exhibition hall. This hall was one hundred and forty feet square with gallery on all four sides twenty-one feet high and thirty feet wide. Four flights of easy stairs, one at either corner, led to the spacious gallery. Light was diffused from side windows under the gallery and in the gallery high enough from the floor so as not to interfere with the wall for exhibit purposes, and from an iron-framed skylight sixty-four feet square. On either side of the main building and in line with the front there were wings thirty-two feet wide and thirty-five feet long. This gave a total frontage to the building of two hundred and ten feet, or a little more than two-thirds of an average city block. The wings were so arranged as to provide a lecture hall, offices, parlor, reception room, buffet, and living rooms for the Representatives and some of the employees. The structure as a whole presented an imposing appearance and was ideal for the purpose intended. It was designed and built by the State Engineering Department, with an occasional inspection by one of the Representatives. Builders figured on the plans and variously estimated the cost at from \$50,000 to \$56,000. We had asked for a building to cost not exceeding one-third of the appropriation. For a time we feared the dimensions would have to be reduced, but State Engineer Ellery, after figuring carefully on the job, expressed the opinion that he could erect the structure as planned for an amount pretty close to our figures. He was finally requested to go ahead with the work. He put one of his trusted superintendents in charge, hired his help by the day, and when completed as nearly as desired for exposition purposes, it was found to have cost, including preparation of grounds and finishing of lecture room, just \$40,333.84, and it was better finished outside and more substantially constructed than Exposition buildings usually are.

NOW A MUSEUM.

As you are aware it has been deeded to the Washington University, on whose grounds the Exposition was held, and, barring accidents, will remain for many years as the University Museum building.

THE GENERAL DISPLAY.

The installation would be tedious to describe, and we will not attempt it further than to say that harmony in color and arrangement was maintained throughout the building, all balancing from an imposing center-piece, or Product Palace, which was covered entirely with natural products of the State, including dried fruits, seeds, cereals, raisins, nuts, etc., so artistically arranged as to give the whole a very attractive appearance. This center-piece or palace was admitted to be not only the most beautiful feature of the California Building, but the most original, elaborate and artistic feature of the entire Exposition. The editor of *Illustrated Northwest Farm and Home* visited the Califor-



GENERAL VIEW, CALIFORNIA EXHIBIT, SEATTLE, 1909
Center Piece of Fruit Palace

nia Building during the early part of the Fair, and returning home gave expression to his impressions through the columns of his paper in these words:

"In the California Building there is everything to delight the eye and the entertainers can talk English. The statuary and ornaments in fruits and nuts surpasses anything that the eye of man ever beheld. For instance; the representation of carvings over the finished woods are created of various kinds of fruits; at the entrance to the center-piece within the main building, are two life-size mountain lions made of peaches; a black knight mounted on a black horse, are made of California prunes; an elephant, full size is made of California walnuts; a life-size cow is created of California almonds; a large black bear has California raisins for a robe; a lemon as large as a hogshead, is composed of California lemons."

These were some of the fruit features designed to set off the general display and emphasize the products that composed them. —But these were only incidental to the strong and imposing exhibit of all of California's material products. There was a generous display of processed fruits, including all varieties known to the State. The dried fruit department was strong and attractive, embracing three separate features, one of miscellaneous dried fruits, one of raisins and one of prunes. There were separate stands or features of wines, olive oil, pickled olives, mineral water, canned fruit, preserved fruit, vegetables, flowers, oranges, nuts, honey, beans, cereals, seeds, sugar, silk, wool, ostrich feathers, fibers, canned milk, canned fish, etc., etc., besides many suitable show cases containing samples of other products more delicate and less in quantity. There was a strong show of incubators and an attractive feature of borax. Models were shown, and in operation where practicable, of such articles or machinery as could not be accommodated otherwise, as for instance the working model of a complete gold dredge, manufactured especially for this exhibit by the Risdon Iron Works of San Francisco.

MINING EXHIBIT.

The Mining Department of the display on the main floor of the California Building was attractively installed and as complete as the State has ever made, being strong in the minerals in which we are strong, but embracing in all forty-four separate commercial varieties, including a strong showing of mineral oils and structural materials. A beautiful illuminated case of gold specimens and free gold ores from Siskiyou County, and an equally beautiful illuminated case of rough and cut gems from San Diego County, including gem jewelry, constituted very attractive features of the mineral department. The onyx and onyx ware from San Diego made a fine showing, as did also the large display of slate in all forms of utility from El Dorado.

FORESTRY.

The Forestry Department included all the commercial woods of the State and many that have a prospective value for cabinet purposes. The variety displayed in this feature was so great, the installation so attractive, and the quality of the raw and manufactured samples so superior, that the Jury readily awarded to it a Grand Prize, the highest recognition possible, and this in a State where forestry is a leading in-

dustry, and by a Jury composed largely of Washingtonians. This was a victory to be proud of. All the available space on the walls of the main exhibition hall was covered with enlarged views of California scenes and industries.

THE GALLERY.

On the upper floor, one gallery (the front) was reserved for display pictures, a hotel information bureau and receptions, one for an exhibit of manufacturers' samples, one for Art, and one for Education.

THE MANUFACTURERS' SAMPLES,

while largely a new departure, constituted a very interesting and instructive feature. Even many Californians were surprised to learn



SECTION OF ART GALLERY, CALIFORNIA EXHIBIT, SEATTLE, 1909

that all of the articles found there were made in this State. Leather and leather goods, silk and silk fabrics and nautical instruments in this department, each were awarded the highest prize it was possible to obtain.

FINE ARTS.

The Art Display collected largely by Miss Evelyn Almond Withrow of San Francisco, as a labor of love, her services being gratuitous, as was her time in superintending the installation of the exhibit later, was freely admitted by those informed on such things to be the best and

most complete representation of California art and handicraft ever brought together on any previous occasion either at home or abroad. It comprised nearly three hundred pictures, all the best work of the best artists in the State, besides busts of statuary, samples of modeling and eight large and specially designed show cases filled with beautiful samples of all classes of handiwork known to art.

EDUCATION.

Our Educational Display was the best and most complete ever made, and was very much the best exhibit of the kind at the Seattle Exposition. It was collected and superintended by Mr. Robert Furlong of San Rafael, an expert in this line of work, and embraced a representative showing of every department of California's educational system from the kindergarten to the university, not omitting the libraries and private educational institutions. There could be only one criticism to this department and that was its crowded condition, as there was too much material for the space that could be allowed for it. In an exhibit of products, quantity can be reduced without material detriment, but if one sample of an educational exhibit is left out, the work perhaps of some fond son or daughter whose parents may come looking for it, there is likely to be trouble. Nearly all portions of California contributed to this Department, making the display representative in every sense.

OUR LOCATION AND GROUNDS.

The California building, though some distance back from the main entrance, was on high ground and eligibly located as to attractive surroundings and accessibility. The grounds for so large a structure were necessarily extensive, and the work of clearing, leveling, sodding and planting these grounds involved an expenditure much greater than at previous expositions, where the grounds were smaller and required less preparatory work.

Mr. Geo. C. Roeding of Fresno, our Superintendent of Horticulture, giving his talents and time, as did Miss Withrow, for the love of the work and the good he could do the State, collected from different nurseries in California two car loads of fruiting trees, flowering plants, palms and shrubs, and traveled to Seattle to personally superintend the work of converting these grounds into a typical California park, with clusters of palms, geranium beds and orange groves. It gave to the Exposition a semi-tropic feature which visitors greatly enjoyed, and which was highly appreciated by the Exposition management as a rare and valuable acquisition to their already beautiful landscape effects. It might be said, however, that the citrus trees and other tender plants did not thrive well even in the Seattle summer, and though the grounds thus planted, as a side attraction and subject of favorable comment, were perhaps worth all they cost, yet they were not so beautiful as they would have been under more favorable climatic conditions. Mr. Roeding's work in the department was prompted by love of his art and pride in his State. He contributed liberally from his own nurseries and gave time and technical assistance that money could hardly have bought, and for his unstinted services, not only your Representatives, but all Californians, owe him a debt of lasting gratitude.

COUNTY AID.

Striving to obtain the best exhibit possible with the means available, your Representatives early solicited the cooperation of all the counties of California, offering in return for their efforts such distinctive representation as the merits of their respective products would warrant, consistent with a general harmonious plan of installation. Some responded very generously, others modestly and some not at all. On the whole, however, the help from counties was very material, particularly the services of their respective representatives in entertaining visitors to the California building and answering the constant flow of questions provoked by an inspection of the exhibits. Those counties that supported one or more representatives at the Exposition and which contributed more or less to the general display were, San Diego, Los Angeles, Riverside, Ventura, Santa Barbara, Santa Cruz, Alameda, San Francisco, Tulare, Sacramento and Siskiyou. Material was contributed by Kern, Fresno, San Joaquin, Monterey, Santa Clara, and here and there a little from others, but none of these latter maintained a representative, while some of those first named had at least two people with us all the time. It can be readily understood that with the regular State employees, reenforced by all the county representatives indicated, selected generally by reason of their especial qualifications for the position, the California force was very strong, and if any one visited the building and left without learning all he or she wanted to know about our State, or any part or industry thereof, it was because they did not make the desire for such information known. The work of the able floor representatives and lecturers was strongly reenforced by a well equipped

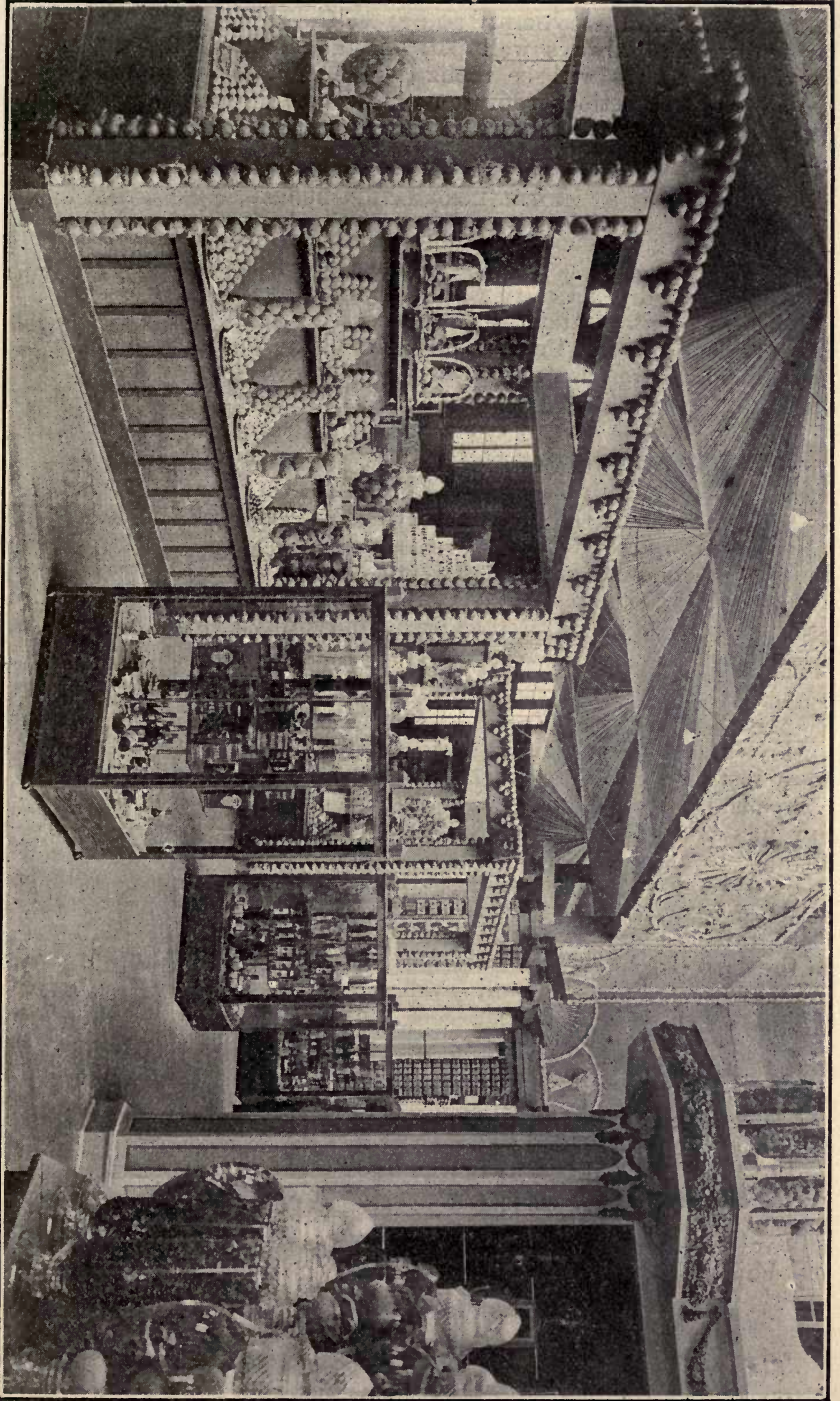
LITERATURE BUREAU.

A neat booth with spacious counter was provided at a prominent and convenient place in the building and well supplied with attractive literature all the time, free to all comers. In addition to the State book, a large edition of which was compiled and published at the expense of the appropriation, and which, we desire to say here, was as comprehensive a publication on California as was ever gotten out, nearly every progressive county contributed to the supply, thus making it possible to meet the eager demand that always exists for information regarding this State. Altogether from first to last we estimate that more than a car load of literature was handed out from our literature booth or given to visitors by those on the floor, and yet no one was ever asked to take a line who had not previously expressed a desire for it. If you force literature on people much of it is thrown away as soon as they are out of your sight. If put within convenient reach people take what they want and no more, and what they want they keep. No California literature was thrown away.

THE FREE ILLUSTRATED LECTURES

were a strong reenforcement to the literature. These lectures were given by the different County Representatives in a hall built and equipped by the State especially for the purpose, and which opened off the main exhibition room. The number of lectures varied from nine to twelve a day, each occupying half an hour, twenty-five minutes for the

GENERAL VIEW, CALIFORNIA EXHIBIT, SEATTLE, 1909



talk and five minutes to empty and re-fill the hall. They were a popular feature and always well patronized, and their far-reaching and convincing lessons will be realized in benefits to California, and especially to the sections represented, for many years to come. A new departure in Exposition work was the maintenance in the California building of a California

HOTEL INFORMATION BUREAU.

Room and accommodations were gladly given for this feature, which, however, was maintained at the expense of certain contributing hotels that represented practically all important centers of the State. It relieved your Representatives of the duty of supplying information in this particular line of inquiry and insured the work being done better than it could have been otherwise.

DEMONSTRATING BOOTHS

were maintained in the California Building by a number of exhibitors to whom we were pleased to give space for the purpose, as experience teaches that one of the most effective ways of impressing the merits of any particular article is to prove its value by sample. Our preserved fruits, our canned mackerel and our borax products were shown and sampled from artistic booths, while beans, wine, olive oil and other products were demonstrated as occasion required but in a more modest way.

HOSTESSES.

Mrs. Wiggins and Mrs. Filcher who had served so successfully as hostesses at the St. Louis Exposition and at the Portland Exposition, were installed as hostesses of the California Building at Seattle, the compensation to be determined after the close of the Exposition when our financial condition would be better understood, they agreeing in advance to abide by the outcome. This arrangement was an incentive to extra economy on their part, and it may be said they seconded every effort of your Representatives in that direction, and yet they maintained California's reputation for hospitality admirably, and became favorites in the large Hostesses' Association of the Exposition, of which Mrs. Wiggins was one of the leading officials.

SECRETARY.

Mr. Geo. A. Dennison, who had a long prior record with the State Board of Trade, and who served us so efficiently as Secretary at St. Louis and at Portland, was appointed Secretary at Seattle, and remained with us to the close of our work. In this connection it may be said that other State Representatives had as their office force a secretary, a bookkeeper and a stenographer. Mr. Dennison, possessing the qualifications, filled all three of these positions for California, and being an expert in each branch filled them all with marked efficiency.

ATTENDANCE.

The splendid exhibit made by California proved one of the principal attractions of the Exposition. It became to be the general remark that

if you did not see the Government exhibit and the California exhibit you did not see the show. As a consequence all who attended the Exposition visited the California building, and as may be supposed, we had a crowd passing through the exhibits all the time the building was open. The average attendance at the Exposition was close to 25,000 a day; allowing that each visitor spent two days on the grounds, and that in one of the two days practically all visited our building, it may be estimated that the number who inspected the California exhibits daily was about 12,000. This we believe is a fair estimate.

CALIFORNIA VISITORS.

We had a separate card register for visitors from this State, and it will surprise you perhaps to learn that the number of Californians who registered with us averaged nearly two hundred a day, or twelve hundred a week. In one day during the height of the season we registered 372 people from our home State. It is not only possible, but very probable, that many come and went without registering; making allowance for these, and figuring those who did register at 1,200 a week, and counting twenty weeks for the Fair (19 weeks and 5 days to be exact), we estimate the number of Californians who attended the Seattle Exposition at 25,000.

AWARDS.

If other evidence were wanting to establish the claim that the Seattle exhibit was the best and most complete ever made by California, it would be found in the record of prizes won by this State. In proportion to the number of entries we not only beat all the other States in the number of high awards, but we beat all past records made by California, and this in face of the fact that the juries as a rule set a high standard and were very critical in their examinations. California's greatest total premiums at any previous Exposition was 518, while at Seattle the total was 800. To win gold medals or higher on half the entries is considered a remarkable record, and yet out of the total of 800 at Seattle, 90 were grand prizes, an award only made in case of extraordinary excellence, 414 were gold medals, 155 silver medals, 108 bronze medals and 33 honorable mentions. A careful analysis by one who understands what is required to win a high award at an International Exposition and what it stands for, will show at once that this is a most extraordinary record, one which we confidently believe has never been equalled by any State or country at any Exposition in the world, and one which is not likely to be equalled except possibly by California itself, for many years to come. It will be noticed from the detailed list of the awards, which follows in this report, that they are well distributed throughout the State, nearly every locality and every industry sharing in the honors, a further evidence of the representative character of the exhibit.

SALVAGE.

At the close of the Exposition we took sufficient time to safely pack all material that had to be returned and to label it carefully so as to facilitate its distribution in California. In the meantime we sold some of the edible goods and some on order we turned over to local agents

of the owners. All money received therefor has been remitted to the parties who furnished the articles and receipts received for the same. The furniture, fixtures and other material which belonged to the State and which we deemed it advisable to sell, was disposed of to the best advantage possible, considering the great quantity of this class of goods that were being thrown on the market. From this source we realized the sum of \$5,135.16. From rent of soft drink stand in the building we realized the sum of \$300.00, and from the sale of building \$750.00, making the total salvage exclusive of building \$5,435.16, which is fully accounted for in the financial statement which follows in this report. The \$750.00 received for the building was turned over to the State Printer on account and never passed through our hands.



THE ALMOND COW, LIFE SIZE, CALIFORNIA EXHIBIT, SEATTLE, 1909

MATERIAL ON HAND.

There was certain office furniture which it was deemed unwise to sacrifice, and some permanent exhibition material that is worth more to the State for future expositions than any amount that could be realized from it at a forced sale. Consequently this material was returned and the furniture has been turned over to the State Agricultural Society and the exhibition material has been stored in a shed which we built for the purpose on the grounds of the State Agricultural Society. The latter consists of eight mineral show cases, a collection of California ores and mineral specimens, a large assortment of California woods, including burls and rare specimens, a lot of framed and unframed pictures of California scenes and industries, and about 500

glass jars, most of which are filled with seeds, cereals, sugar or processed fruits. The furniture returned at 50 cents on the dollar, the usual selling price at an Exposition of good material, is worth \$75.00, the showcases \$425.00, exhibit material, estimated at half what it would cost to collect it, \$2,000.00, and the glass jars \$1,000.00. This totals a heritage to the State from the Seattle Exposition of \$3,500.00. This will be available and worth even more than the sum stated whenever the State desires to make another exhibition.

BENEFITS TO CALIFORNIA.

Summing up the benefits of an exhibit is a good deal like a merchant trying to estimate the good derived from a sign over his door. Occasionally a patron may say, "I saw your sign and came in," and occasionally a party may say, "I saw your exhibit and it prompted me to come to California." The money dropped from travelers alone who passed through this State going to or returning from the Exposition, has probably recompensed California for its outlay, but this is only the beginning of the harvest. Many people from the eastern and central States who visited the Exposition with a view of ascertaining in which part of the Northwest it would be best to settle, changed their minds after seeing the exhibits made by the different States and came on to California. Besides, thousands of others already settled, after inspecting the exhibits made by this State, openly declared that if they ever moved again they would land in California. The tons of literature on this State carried away by visitors to supplement and strengthen their impressions, both impressions and literature to be disseminated among their neighbors, will have an effect that cannot be estimated, but which must inevitably bear fruit for California for many years to come. Then again, the seeing of our splendid products naturally excites a desire to try them, and the increased demand for our fruits, oil, wines, etc., growing out of such a display, is far-reaching. But more than all this, the greater intercourse, the better acquaintance, the more friendly feeling between the people of the different sections of the country, and particularly of the west, and more particularly between the people of this State and Washington, or Oregon and Washington, if you please, is bound to lead to a better understanding in regard to trade relations and result in commercial benefits that cannot be estimated. That the participation of California was wise there is no doubt, and that the benefits received and to be received will be many fold greater than the cost is as certain as the future. The follow-up letters that have already come to your Representatives from people of the Northwest and other sections who saw and inspected our exhibit, is further proof that an interest in this State has been awakened among them that will not soon die out.

ACKNOWLEDGEMENTS.

We are under obligations to so many that it would be tedious to enumerate them. The higher officials of the Exposition, President J. E. Chilberg, Director-General I. A. Nadeau and Director of Exhibits H. E. Dosch, showed us every courtesy and manifested a desire to do all they could to facilitate our work; while from the other departments, and even from the subordinates in all departments, a request from

California was promptly considered and always conceded when not inconsistent with the Exposition rules. There were differences at first, as is always the case, but on a better understanding these were adjusted to the satisfaction of all concerned.

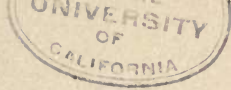
The Southern Pacific Company and the Northern Pacific Company carried our freight at a one-way rate, and their respective agents were prompt and accommodating, setting a new mark for railroad efficiency at Expositions. The Southern Pacific Passenger Department also loaned us some very fine pictures of California scenes which were valuable not only as wall decorations but as object lessons on certain features of our State. To the Golden Gate Park officials of San Fran-



WALNUT ELEPHANT, LIFE SIZE, CALIFORNIA EXHIBIT, SEATTLE, 1909

cisco, and also the officials of the Stockton State Hospital, we are under obligations for liberal contributions of ornamental plants and shrubs for the decoration of the California building and grounds. Mr. R. M. Teague of San Dimas and the Fancher Creek Nursery of Fresno, also contributed liberally of their choicest stock, for which we owe them a debt of gratitude. The same is true of J. Dietrich, Howard & Smith, Elysian Park and Edward H. Rust, all of Los Angeles, and of the Orange County Nursery & Land Co., of Fullerton.

To the counties and other subdivisions of the State that through organized effort and at their own expense collected valuable exhibition material, prepared descriptive literature and sent representatives to



Seattle, thereby strengthening the exhibit and adding to the force of California workers, we are under obligations. To their efforts and to the efficiency of the people they sent much of California's success at the Seattle Exposition is due, and we want them to know and feel that their efforts and co-operation are fully appreciated.

To producers, manufacturers and packers, to lumbermen and miners, who responded to our request for samples of their output we owe a debt which we tried to pay in part by caring for their goods as they would have cared for them, and by looking out for their interests in the matter of awards as carefully as they could have done had they been there.

In this connection we wish to express our obligation to the Niles-Pease Furniture Company for the generous loan of the finest art mission furniture for our reception room, to Byron Mauzy of San Francisco, the Star Piano Company and Salyer-Baumiester of Los Angeles, for the loan of pianos for the use of our guests, and to the Eilers Piano Company for the free use of a pianola for our lecture room. To Arthur Harris, designer, and to C. L. Wilson, Superintendent of Installation, both experts in their line, is due largely the attractive character of California's exhibit, admitted to be the most beautiful in arrangement and display, as well as the most comprehensive ever put up by this or any other State, at Seattle or any other Exposition.

CONCLUSION.

We do not hesitate to affirm that California's participation at the Seattle Exposition was a success from every point of view, and knowing our trust was conscientiously performed, and that our best efforts were exerted in the interest of our State, we dare to hope that you who trusted us are not disappointed, and that the people of California who generously advanced the money for the work are satisfied with the showing made, and that they will reap substantial and lasting benefit as the result of their enterprise and liberality. We want to thank you sincerely for the confidence reposed in us, for your kindly co-operation and advise, and particularly for the generous rein given to us in carrying out a work for which you, in the eyes of the law, were primarily responsible. Our studied efforts were continually directed toward trying to get the greatest results at the least cost, for, though handling a generous appropriation, we never lost sight of the fact that it was the people's money, and consequently we consented to the expenditure of a dollar only where in our judgement a dollar's worth or more benefit would accrue to California; neither did we lose sight of the high standard which has characterized your course in the handling of public affairs. We acted on the principle that public office is a public trust, and that public money should be handled with greater care than one would handle his own.

The following pages contain a complete list of the awards made to California exhibitors and a statement of all moneys received and expended, and accompanying this report we hand you the vouchers showing all our transactions and just how the money was expended. We

have settled every honorable claim, we have concluded the work in full, even to the distribution of the awards, and if there is a dollar left to go back into the Treasury it is because that dollar was not needed for the full satisfaction of the duties imposed.

Respectfully,

J. A. FILCHER,

FRANK WIGGINS,

Governor's Representatives.

FINANCIAL STATEMENT

CALIFORNIA ALASKA-YUKON-PACIFIC EXPOSITION COMMISSION

October 1, 1907, to December 27, 1910.

State of California		\$99,500.00
Salvage		5,435.16
Office Supplies	\$ 487.23	
Postage	321.45	
Telephone and Telegraph	248.04	
Drayage	2,173.44	
Express and Freight	5,579.11	
Building Maintenance	3,250.96	
Printing	1,639.30	
Furniture and Fixture	4,294.74	
Miscellaneous	3,361.95	
J. A. Filcher, Salary	3,930.00	
J. A. Filcher, Expense	1,319.99	
Frank Wiggins, Salary	1,625.00	
Frank Wiggins, Expense	705.87	
G. A. Dennison, Salary	3,100.00	
G. A. Dennison, Expense	838.35	
Employees' Salary ..	10,264.60	
Employees' Expense	1,570.66	
Rent ..	763.03	
Exhibit Material	8,205.03	
Installation	10,829.55	
California Building	40,333.84	
Returned to A. B. Nye, State Controller ..	93.02	
	<hr/>	
	\$104,935.16	<hr/> \$104,935.16

LIST OF AWARDS MADE TO CALIFORNIA EXHIBITORS

Alaska-Yukon-Pacific Exposition, Seattle, 1909

GRAND PRIZES

EXHIBITOR	ADDRESS	AWARD ON—
A. Repsold & Co	San Francisco	Brandy 3 star.
Wetmore-Bowen Co	San Francisco	Chateau Cresta Blanca.
Gundlach-Bundschu Wine Co.	San Francisco	Mesa Blanca Wine.
The Rosenblatt Company	San Francisco	Apricot Brandy.
Italian Swiss Colony	San Francisco	Asti Special Wine.
St. Elmo Cigar Co.	Los Angeles	Cigars.
F L Hogue	Santa Barbara	Beans.
F. L. Hogue	Santa Barbara	Mustard Seed.
Lovdal Bros. Co	Sacramento	Hops.
San Joaquin Co	Stockton	Grains and milling products.
State of California	Sacramento	Assorted cereals.
Ventura County		Lima beans.
John J. Sommans	Pasadena	Cut glass.
San Francisco Ceramic Club	San Francisco	Display hand decorated china.
Bertha and Ellen Kleinschmidt	Berkeley	Hand decorated china.
State of California	Sacramento	Gen'l collection woods and burls.
State of California	Sacramento	Gen'l collection commercial and cabinet woods.
Cawston Ostrich Farm	Pasadena	Ostrich feathers.
Carlson-Currier Silk Co	San Francisco	General display silks.
Los Angeles Silk Works	Los Angeles	"Yard wide" silk.
Jas. A. Jasper	San Diego	Silk and cocoon exhibit.
Alameda County	Oakland	Processed vegetables.
California Nursery	Niles	78 varieties nuts, grown in one nursery.
San Diego County	San Diego	Processed fruit in glass.
W. D. Nichols	Oakland	Processed flowers.
Sacramento Valley		Gen'l display processed fruits and vegetables.
Fred L. Hilmer Co	San Francisco	Eggs.
Petaluma Incubator Co	Petaluma	Gen'l display incubators and brooders
State of California	Sacramento	Installation mineral exhibit
State of California	Sacramento	Gen'l installation of State bldg.
State of California	Sacramento	Installation of fruit palace.
Brawley Cantaloupe Ass'n		Cantaloupes.
Los Nietos Ranchito Walnut Growers Ass'n	Rivera	Walnuts.
C. W. Leffingwell	Whittier	Lemons.
Los Angeles Chamber of Com		Processed fruit in glass
Tulare County Board of Trade		Fruits through season.
Cal. Fruit Growers Exchange	Los Angeles	Oranges
E. B. Leach		Lemons.
State of California	Sacramento	Fruit and vegetables in glass.
State of California	Sacramento	Almonds

GRAND PRIZES—Continued

EXHIBITOR	ADDRESS	AWARD ON—
California Cotton Mills Co...	Oakland	Raw and manufactured cotton.
Johnston Fruits Co.	Santa Barbara	Lemons.
Pacific Electric Heating Co..	Los Angeles...	Hot point electric iron.
State of California	Sacramento	Processed fruit and vegetables.
Holmes Disappearing Bed Co.	Los Angeles...	Sanitary conditions.
San Diego County	San Diego...	Gem exhibit.
Cal. Public School System.....		General education display.
Santa Barbara County		English walnuts.
San Diego County.....		Display of nuts.
Raymond Glove Co.....	Stockton	Manufactured gloves
Wagner Leather Co.....	Stockton	Tanned leather.
Champion Manufacturing Co.	Oakland	Aut-O-Lac leather dressing.
Walsh-Richardson Co.....	Sacramento	Saddles.
Gertrude Boyle.....	San Francisco	Sculpture.
Clara Hill	San Francisco	Sculpture.
A Stirling Calder	Los Angeles	Sculpture.
Rosa G. Taussig	San Francisco	Bookbinding
Western Art Tile Co.....	Los Angeles	Art tile.
State of California	Sacramento	Beet sugar.
California Dried Fruit Agency.	Fresno	Dried fruits.
Santa Clara Co. Fruit Exchange.....		Assorted dried fruits
Fresno Chamber of Commerce.		Seeded raisins.
Fresno County		Artistic display of raisins
Alpine Evaporated Cream Co	Hollister	Evaporated milk.
Roeding Fig Packing Co.....	Fresno	Dried figs and preserved figs in glass.
American Olive Co.....	Los Angeles	Ripe olives.
Ehmann Olive Co.....	Oroville	Ripe olives
American Olive Co.....	Los Angeles...	Olive oil.
Griffin & Skelly Co ..	San Francisco.	Assorted canned and preserved fruits.
Cal. Fruit Canners Association	San Francisco.	Assorted canned and preserved fruits
The J. H. Flickinger Co ..	San Jose.	Assorted canned fruits.
Central California Canneries	Sacramento	Assorted canned fruits
Ellwell & Russell	Santa Cruz	Jellies, preserves & marmalades.
Bishop & Co ..	Los Angeles	Preserved fruits.
G. H. Waters & Co.....	Ramona	Canned fruits.
Octavia Holden	San Francisco.	Bookbinding
State of California.....	Sacramento	General collection of gold ores
State of California	Sacramento	General display minerals.
New Pedrara Mexican Onyx Co.	San Diego	Onyx display.
Siskiyou County		Gold ores, placer and leaf gold and gold specimens
A. Lietz Co ..	San Francisco.	Surveying and nautical instruments
Pacific Coast Borax Co....	Oakland	Borax, raw and refined, and its product for medical and domestic use
Hicks-Judd Co.....	San Francisco.	Display bookbinding & printing.
State of California	Sacramento	California Public Schools System.
Los Angeles Pressed Brick Co ..		Pressed and glazed brick.
State of California.	Sacramento	Variety of woods and finish.
Ehmann Olive Co ..	Oroville	Olive oil
Siskiyou County	Yreka	Indian basketry & Indian relics.
State of California.....	Sacramento	Display of arts and crafts

GRAND PRIZES—Continued

EXHIBITOR	ADDRESS	AWARD ON—
Chas. Frederick Eaton	Santa Barbara	Arts and crafts.
Chas. Frank Ingerson	San Francisco	Modeled leather screen.
G. Kellogg Claxton	San Francisco	Metal art work and jewelry.
State of California.	Sacramento	Collective display oil paintings.
Goddard Gale	Oakland	Water colors.
Rose Hooper Plattner	San Francisco	Miniatures.

GOLD MEDALS

El Quito Olive & Vine Farm	Santa Clara	Claret.
C. Shilling & Co.	San Francisco	Lomas Azules (Chateau Yquem).
C. Shilling & Co	San Francisco	Semillon
C. Shilling & Co	San Francisco	Burgundy.
C. Shilling & Co	San Francisco	Cabernet Sauvignon.
C. Shilling & Co	San Francisco	Sherry
C. Shilling & Co	San Francisco	Cabernet.
Italian-Swiss Colony	San Francisco	Burgundy.
Italian-Swiss Colony	San Francisco	Zinfandel.
Italian-Swiss Colony	San Francisco	Riesling.
Italian-Swiss Colony	San Francisco	White Tipó
Italian-Swiss Colony	San Francisco	Chablis.
Italian-Swiss Colony	San Francisco	Haut Sauterne.
Italian-Swiss Colony	San Francisco	Sauterne.
Italian-Swiss Colony	San Francisco	Cabernet.
Italian-Swiss Colony	San Francisco	Claret.
Italian-Swiss Colony	San Francisco	Tipo Red.
Italian-Swiss Colony	San Francisco	Tokay.
Italian-Swiss Colony	San Francisco	Sherry.
Italian-Swiss Colony	San Francisco	Port
Italian-Swiss Colony	San Francisco	Muscat.
Italian-Swiss Colony	San Francisco	Madeira.
Italian-Swiss Colony	San Francisco	Angelica.
Italian-Swiss Colony	San Francisco	Isco Grape Juice, white
Italian-Swiss Colony	San Francisco	Isco Grape Juice, red.
Italian-Swiss Colony	San Francisco	Sparkling wine (Burgundy)
Italian-Swiss Colony	San Francisco	Grape brandy.
George Bram	Santa Cruz	Zinfandel.
George Bram	Santa Cruz	Riesling.
George Bram	Santa Cruz	Burgundy.
To-Kalon Vineyard Co	Oakville	Riesling
To-Kalon Vineyard Co	Oakville	Burgundy.
To-Kalon Vineyard Co	Oakville	Zinfandel
To-Kalon Vineyard Co	Oakville	Sauterne.
To-Kalon Vineyard Co	Oakville	Chablis.
H. Jevene	Los Angeles	Sauterne.
H. Jevene	Los Angeles	Sherry.
H. Jevene	Los Angeles	Port.
A. Repsold & Co	San Francisco	Cavaliere (Moselle).
A. Repsold & Co	San Francisco	Sauterne.
A. Repsold & Co	San Francisco	Mirando (Burgundy).
A. Repsold & Co	San Francisco	Rubi Bueno (St. Julien).
A. Repsold & Co	San Francisco	Chablis
A. Repsold & Co	San Francisco	Sparkling wine (Burgundy)
A. Repsold & Co	San Francisco	Sparkling wine (Sauterne).

GOLD MEDALS—Continued

EXHIBITOR	ADDRESS	AWARD ON—
Wetmore-Bowen Co.	San Francisco	Sauterne.
Wetmore-Bowen Co.	San Francisco	Haut Sauterne.
Wetmore-Bowen Co.	San Francisco	Margaux Souvenir.
Wetmore-Bowen Co.	San Francisco	St. Julien.
Wetmore-Bowen Co.	San Francisco	Sparkling Cresta Blanca, Saut.
Wetmore-Bowen Co.	San Francisco	Sparkling Cresta Blanca, Burg.
Gundlach-Bundschu Wine Co	San Francisco	Cabinet Riesling.
Gundlach-Bundschu Wine Co	San Francisco	Rodensteiner wine.
Gundlach-Bundschu Wine Co	San Francisco	Cabinet Gutedel.
Gundlach-Bundschu Wine Co	San Francisco	Santa Maria (Burgundy)
Gundlach-Bundschu Wine Co	San Francisco	Chateau Gundlach (St. Julien).
Gundlach-Bundschu Wine Co	San Francisco	Loma Prieta (Medoc).
Gundlach-Bundschu Wine Co	San Francisco	Bacchus Chambertin (Burg'dy).
The Rosenblatt Co.	San Francisco	Zinfandel
The Rosenblatt Co.	San Francisco	Port
The Rosenblatt Co.	San Francisco	Blackberry Cordial.
Sunset Wine Co.	Los Angeles	Sherry.
Sunset Wine Co.	Los Angeles	Tokay.
Sunset Wine Co.	Los Angeles	Port.
Sunset Wine Co.	Los Angeles	Madeira.
Sunset Wine Co.	Los Angeles	Angelica.
Italian Vineyard Co	Los Angeles	Port.
Italian Vineyard Co	Los Angeles	Sherry.
Italian Vineyard Co	Los Angeles	Angelica.
Italian Vineyard Co	Los Angeles	Muscat.
Italian Vineyard Co	Los Angeles	Claret.
Lachman & Jacobi	San Francisco	Sherry.
Lachman & Jacobi	San Francisco	Port.
California Wine Ass'n.	San Francisco	Zinfandel.
California Wine Ass'n.	San Francisco	Haut Sauterne.
California Wine Ass'n.	San Francisco	Cerrito (Sauterne)
California Wine Ass'n.	San Francisco	Claret.
California Wine Ass'n.	San Francisco	Burgundy.
California Wine Ass'n.	San Francisco	La Loma (Burgundy).
California Wine Ass'n.	San Francisco	Hillcrest.
California Wine Ass'n.	San Francisco	Port.
California Wine Ass'n.	San Francisco	Sherry.
California Wine Ass'n.	San Francisco	Muscat.
California Wine Ass'n.	San Francisco	Malaga
California Wine Ass'n.	San Francisco	Madeira.
California Wine Ass'n.	San Francisco	Angelica.
California Wine Ass'n.	San Francisco	Brandy.
California Wine Ass'n.	San Francisco	California Wine.
California Wine Ass'n.	San Francisco	Sauterne Type.
California Winery	Sacramento	Cala-Sauterne.
California Winery	Sacramento	Cala-Claret.
California Winery	Sacramento	Cordova Burgundy.
California Winery	Sacramento	Zinfandel.
California Winery	Sacramento	Angelica.
California Winery	Sacramento	Sherry.
California Winery	Sacramento	Port
Theodore Gier	Oakland	Riesling.
Theodore Gier	Oakland	Sauterne.
Theodore Gier	Oakland	Burgundy.
Theodore Gier	Oakland	Zinfandel.
Theodore Gier	Oakland	Port.

GOLD MEDALS—Continued

EXHIBITOR	ADDRESS	AWARD ON—
Napa & Sonoma Wine Co	San Francisco	Sauterne.
Napa & Sonoma Wine Co	San Francisco	Sherry.
Napa & Sonoma Wine Co	San Francisco	Port.
Napa & Sonoma Wine Co	San Francisco	Cognac.
Geo. West & Sons	Stockton	Sauterne.
Geo. West & Sons	Stockton	Claret.
Edward Germain Wine Co	Los Angeles	Sherry.
Edward Germain Wine Co	Los Angeles	Tokay.
Edward Germain Wine Co	Los Angeles	Port.
Sierra Madre Vintage Co	Lamanda	Port.
Buffalo Brewing Co	Sacramento	Beer.
S. Martinelli	Watsonville	Apple cider.
Upper Soda Mineral Springs Co	Dunsmuir	Mineral water.
Bartlett Springs Co	Bartlett Springs . . .	Mineral water.
Meander Bros	Yreka	Mineral water.
Aetna Springs Co	Aetna Springs	Mineral water.
Shasta Water Co	Shasta Springs	Mineral water.
Cooks Springs Min'l Water Co.	Williams	Mineral water.
Thos. P. Converse & Co	San Diego	Mineral water.
Witter Medical Springs Co . . .	San Francisco	Mineral water.
G. Russo	Los Angeles	Tortoise shells.
Mrs. Clarence Berry	Los Angeles	2 Alaska Moose head chairs.
Gibbs & Harris	Los Angeles	Leather suitcases.
Mrs. Clarence Berry	Los Angeles	Beaver robe.
Clarence J. Berry	Los Angeles	One mounted Moose head.
Geo. Griffith	Los Angeles	Smudge pots and smudge fuel.
Chamber of Commerce	Santa Cruz	5 pieces of redwood tree.
State of California	Sacramento	Industrial work.
C. C. Morse & Co	San Francisco	Assorted flower and garden seeds.
J. R. Newberry	Los Angeles	Citron.
I. V. Ralph & Co	Oakland	Flavoring extracts, spices & coffee
Jones Bros. & Co	Santa Cruz	Vinegar.
Krieger Vinegar Co	Santa Cruz	Vinegar.
Royal Packing Co	Los Angeles	Canned Chili peppers.
Pioneer Green Chili Pack'g Co.	Los Angeles	Chili peppers.
California Fish Co	Los Angeles	Canned fish.
Monterey Packing Co	San Francisco	Canned fish.
Chamber of Commerce	Los Angeles	Comb honey.
Chamber of Commerce	Los Angeles	Extracted honey.
I. W. Myers	Oak Park	Strained honey.
L. D. Walker	Sacramento	Honey in jars.
Bert Peters	Sacramento	Honey.
Casper Hauser	San Diego	Honey.
Sacramento Valley Sugar Co . .	Hamilton	Beet sugar.
American Sugar Co	Oxnard	Beet sugar.
Los Alamitos Sugar Co	Los Alamitos	Beet sugar.
Spreckels Sugar Co	San Francisco	Beet sugar.
Fairoaks Fruit Co	Fairoaks	Pickled olives.
C. M. Clifford	San Diego	Ripe olives.
Akerman & Tuffley	San Diego	Ripe olives.
Roeding Olive Co	Fresno	Olive oil
J. C. Kubias	Redlands	Olive oil.
Sanitary Fruit Co	Red Bluff	Assorted dried fruits.
Rosenberg Bros & Co	San Francisco	Assorted dried fruits.
J. K. Armsby & Co	San Francisco	Assorted dried fruits.

GOLD MEDALS—Continued

EXHIBITOR	ADDRESS	AWARD ON—
Castle Bros	San Francisco	Assorted dried fruits.
Griffin & Skelly Co	San Francisco	Assorted dried fruits.
Chamber of Commerce	Los Angeles	Assorted dried fruits.
Chico Packing Co	Chico	Assorted dried fruits.
Santa Clara Co. Fruit Exchange		Prunes.
Ewell & Russell	Santa Cruz	Dried apples.
Fresno Home Packing Co	Fresno	Raisins.
Guggenhime & Co	Fresno	Raisins.
Griffin & Skelly Co	Fresno	Raisins.
J. B. Inderrieden	Fresno	Raisins.
Willis Pike	Fresno	Raisins.
Phoenix Packing Co	Fresno	Seeded raisins.
Castle Brothers	Fresno	Seeded raisins.
Rosenberg Bros & Co	Fresno	Seeded raisins.
S. Hassli	Lincoln	Zante currants.
F. F. Stetson & Co	Los Angeles	Canned fruits.
Mrs. M. Wagstaff	Orloff	Assorted fruit jams.
Code-Portwood Canning Co	Fruitvale	Fruit, jellies, jams in glass & tins.
H. P. D. Kingsbury	Redlands	Marmalade, jams, etc.
Cal. Fruit Cannerns Association	San Francisco	Canned asparagus.
Central California Canneries	Sacramento	Canned asparagus.
I. V. Ralph & Co	Oakland	Olive oil.
Los Angeles Olive Growers Ass'n		Olive oil.
H. Jevene	Los Angeles	Olive oil.
C. M. Gifford	San Diego	Olive oil.
Fairoaks Fruit Co	Fairoaks	Olive oil.
El Quito Olive & Vine Farm	Santa Clara	Olive oil.
Akerman & Tuffley	San Diego	Olive oil.
Birdsall Olive Co	Auburn	Olive oil.
J T Bears	Tulare	Grapes.
H. R. Shoemaker	Tulare	Oranges.
C. E. Berg	Tulare	Grapes.
Cal. Fruit Growers Exchange	Los Angeles	Grapes.
Limoneira Company	Santa Paula	Lemons.
Ventura Co. Walnut Growers Ass'n		Walnuts.
Maywood Colony	Corning	Peaches
J. A. Davidson		Vegetables
J M Eddy	Stockton	Fruit in season.
Lemon Grove Fruit Growers Ass'n		Oranges.
San Diego County		Nuts.
W. L. Detrick	Julian	Apples.
B. F. Miller		Apples.
Loveless Fruit Co.	Escondido	Citrus fruits and grapes.
Sweetwater Fruit Co.	San Diego	Citrus fruit.
Arlington Heights Fruit Exchange	Arlington H'ts.	Lemons.
E. W. Brewer	Orange	Peanuts.
J. C. Ostegard	Burbank	Melons.
J. J. H. Jarchow	San Gabriel	Oranges.
Rivers Bros	Los Angeles	Grapes
Azusa Covina Glendora Fruit Exchange	Glendora	Oranges.
Chas. Rosquenish	Clearwater	Onions.
A. P. Griffiths	Azusa	Citrus fruits.
F. C. Anderson	Newcastle	Fruit in season.

GOLD MEDALS—Continued

EXHIBITOR	ADDRESS	AWARD ON—
State of California	Sacramento	4 paintings showing the four important industries of the State.
Pioneer Fruit Co	Sacramento	Fruit.
Chamber of Commerce	Watsonville	Apples.
A. McGee	Orangevale	Grapes.
California Vineyards Co	Florin	Grapes.
J. P. Dargitz	Acampo	Grapes.
Warren Cozzens	Fairoaks	Citrus fruit.
Arlington Heights Fruit Exchange	Arlington H'ts.	Lemons.
Byron Mauzy	San Francisco	Pianos
Starr Piano Co	Los Angeles	Pianos.
Pacific Vinegar & Pickle Works	Oakland	Vinegar, pickles, catsup and relishes.
Pacific Manifold Book Co.	Emeryville	Blank books for mercantile use.
W. D. Nichols	Oakland	Installation Alameda Co exhibit.
Harper & Emig	Santa Clara	Polished and unpolished beach pebbles from California.
Fancher Creek Nursery	Fresno	Fig and citrus trees.
H. Peterson	San Francisco	Model ranch
University of California	Berkeley	Assortment of seeds.
C. S. Riley	Visalia	Spineless cactus.
R. M. Teague	San Dimas	Citrus fruit trees.
Ways Pocket Smelter Co	South Pasadena	Ways pocket smelter.
Chico Packing Co	Chico	Assorted dried fruits
Los Angeles Pressed Brick Co	Los Angeles	Pressed brick.
Mrs. Harvey	San Francisco	Hand decorated china.
Mrs. G. Dorn	San Francisco	Hand decorated china.
Helen O'Malley	San Francisco	Hand decorated china.
R. V. Bateman	San Francisco	Hand decorated china.
S. V. Culp	San Francisco	Hand decorated china.
O'Malley & Taylor	San Francisco	Hand decorated china.
A. Haynes	San Francisco	Hand decorated china.
Mrs. J. Peltier	San Francisco	Hand decorated china.
A. Hinze	San Francisco	Hand decorated china.
Emily Hesselmeyer	San Francisco	Hand decorated china.
Minnie C. Taylor	San Francisco	Hand decorated china.
Mrs. Harry Upton	Los Angeles	Hand decorated china.
Mrs. C. P. Pailsback	Los Angeles	Hand decorated china.
Isabella Hampton	Los Angeles	Hand decorated china.
M. E. Perley	Los Angeles	Hand decorated china.
Los Angeles Ceramic Club	Los Angeles	Hand decorated china.
Mrs. Elenor Kohler	Los Angeles	Hand decorated china.
Mary Leicester Wagner	Santa Barbara	Hand decorated china.
Elwood Cooper	Santa Barbara	Olive oil.
Indian Crafts Exhibit	Los Angeles	Indian crafts and blankets.
Dr. Jarvis Barlow	Los Angeles	Sanatorium cottage.
Santa Barbara County		English walnut show.
Tulare Co. Board of Trade		Gen'l collection processed deciduous, citrus fruits, grapes and vegetables.
Johnson, Musier & Co.	Los Angeles	Assortment beans, fresh cured.
Tulare Co. Board of Trade		Jar Phillips cling peaches; jar matured dates & bartlett pears.
Alameda County		Processed fruit.
Santa Barbara County		Processed fruit.

GOLD MEDALS—Continued

EXHIBITOR	ADDRESS	AWARD ON—
W. B. Filcher	Pacific Grove	Processed fish.
I. L. Ettlinger	Sacramento	Hemp in stalk and fiber.
Eucalyptus Timber Co	Los Angeles	Collection eucalyptus woods.
International Eucalyptus Ass'n	Sacramento	Eucalyptus finished woods.
Mr. McAbee		Redwood burl table top.
Chamber of Commerce	Santa Cruz	Redwood burls.
Chamber of Commerce	Santa Cruz	Sequoia Semper Virens tree.
National Wood Pipe Co	Los Ang & S.F.	Redwood water and sewer pipe.
State of California	Sacramento	Collection woods and burls.
Hughes Manufacturing Co.	Los Angeles	Inlaid eucalyptus wood.
Cooper Fly Book Co	San Francisco	Handy fly books.
Washington Creamery Co	Yreka	Fresh butter.
Edgewood Creamery Co	Yreka	Fresh butter.
Peerless Hone Co	Los Angeles	Hones.
Sacramento Ostrich Farm Co.	Sacramento	Ostrich feathers.
Smith Bros	Los Angeles	Fan lawn sprinkler.
State of California	Sacramento	Installation of art exhibit.
California Fruit Growers Exchange	Los Angeles	Installation of citrus fruits.
State of California	Sacramento	Installation educational exhibit.
State of California	Sacramento	Installation forestry and woods.
Siskiyou Co.	Yreka	Installation Indian work & relics.
California Nursery Co.	Niles	Loquats.
Fancher Creek Nursery	Fresno	Grapes and figs.
Chas. L. Wilson	Los Angeles	Lemons.
James Slauson	Los Angeles	Oranges.
Lemon Cove Ass'n	Lemoncove	Pomelos.
Capital Paste Co	Sacramento	Macaroni.
Citrus Product Co	San Diego	Citric acid and lemon oil.
Dento Table Salt Co	Stockton	Dento salt.
Bishop & Co	Los Angeles	Condiments.
Bishop & Co	Los Angeles	Crystallized fruits.
Bishop & Co	Los Angeles	Peanut butter.
Cal. Fruit Cannery Association	San Francisco	Tomato catsup.
Walsh-Richardson Co.	Sacramento	Carved leather goods.
Gibbs & Harris	Los Angeles	Rattan and leather suitcases.
Zuver Bros. & Davison	Oakland	Manufactured leather gloves.
Allen C. Rush	Los Angeles	Oil burners.
Waltz Safe & Lock Co.	San Francisco	Fireproof safe.
Julius Harkell	San Diego	Showcases.
International Eucalyptus Ass'n	Sacramento	Manuf'd eucalyptus furniture.
Pacific Coast Rattan Co.	Oakland	Rattan furniture.
Pease Brothers	Los Angeles	Mission furniture.
Arthur Harris	Los Angeles	Combina'n settee & library desk.
Beach-Robinson Co.	San Francisco	Fine handmade chair.
Idah Meacham Strobidge	Los Angeles	Bookbinding.
Douglas Tilden	San Francisco	Sculpture.
Florence Manor	San Francisco	Sculpture.
Emilie S. Perry	Los Angeles	Sculpture.
Frank F. Stone	Los Angeles	Sculpture.
Pacific Shade Cloth Co.	Oakland	Eureka handmade shade cloth.
Reese Water Proof Co.	Fruitvale	Waterproof garments.
Dolge Manufacturing Co	Dolgeville	Manufactured felt and felt goods.
Pioneer Hosiery Mills	Los Angeles	Knitted products.
State of California	Sacramento	Crude petroleum.
State of California	Sacramento	Quicksilver ores.

GOLD MEDALS—Continued

EXHIBITOR	ADDRESS	AWARD ON—
Woodstone Flooring Co	Los Angeles	Woodstone.
Siskiyou County		Ores and minerals, and free mill- ing, including copper and cin- nabar.
Phoenix Refining & Mfg. Co.		Mineral oils.
Eureka Slate Co.	Slatington	Slate roofing and tiling, slate and manufactured articles.
Risdon Iron Works	San Francisco	Gold dredger.
F. W. Braun & Co	Los Angeles	Assaying appliances.
Champion Manufacturing Co	Oakland	Washing tablets
Try-Me-Meade Brass Polish Co.	San Diego	"Try-Me-Meade" brass polish.
Smith Bros. Hardware Co	Oakland	Metal polish.
Diamond Match Co.	Chico	Assorted matches.
Los Angeles Soap Co	Los Angeles	Toilet soap.
Lemola Soap Co.	Los Angeles	Lemola soap
Citrus Soap Co.	San Diego	Citrus washing powder.
Hills Brothers.	San Francisco	Canned butter.
Patto Creamery Co	Yreka	Full cream cheese
W. D. Nickels	San Diego	El Cajon raisin display.
John C. Dickson	San Diego	Raisins.
Chas Galloway	San Diego	Raisins.
A. S Hopkins	Sacramento	Brooms.
Gladding, McBean & Co.	San Francisco	Colored terra cotta supports.
Foard A. Carpenter	San Diego	Climatological exhibit.
Sugar & White Pine Agency.	San Francisco	Assorted & manufactured doors in sugar pine
Diamond Match Co.	Chico	Assorted veneers.
State of California	Sacramento	Ornamental tiling.
Redwood Manufacturers Ass'n	San Francisco	Manufactured doors, commercial redwood, planks and bark.
Diamond Match Co.	Chico	Finished doors.
Allen C. Rush	Los Angeles	Oil burner for railway locomo- tives.
Vesta Smith	Los Angeles	Arts and crafts.
Milward Holden	San Francisco	Carved wood.
Mrs. Elizabeth Burton	Santa Barbara	Arts and crafts.
R. G Kiesling	Los Angeles	Carved wood
Fred Lueders	Pasadena	Arts and crafts.
Kathryn Rucker	Los Angeles	Table mat
Mrs. A. C. Perkins	San Francisco	Pin cushion top
The Campaneros	Santa Rosa	Modeled leather.
Bertha and Ellen Kleinschmidt	Berkeley	Modeled leather.
Chas. Frank Ingerson	San Francisco	Modeled leather.
Van Erp & Robertson	Oakland	Arts and crafts
Eulora M. Jennings	Berkeley	Hand wrought jewelry.
Katharine B Gorrill	Berkeley	Metal art work and jewelry.
Henry Busse	Los Angeles	Leather and metal work.
Arnold Genthe	San Francisco	Art photography.
State of California	Sacramento	Collection scenic and industrial photographs and bromide en- largements.
Putnam & Valentine	Los Angeles	Photographs.
C C. Pierce & Co.	Los Angeles	Photographs
Board of Trade	Pasadena	Photographs.
San Diego County	San Diego	Photographs.
Siskiyou Co.	Yreka	Panoramic photographs.

GOLD MEDALS—Continued

EXHIBITOR	ADDRESS	AWARD ON—
Chamber of Commerce	Los Angeles	Scenic album.
California Hotel Exhibit	San Francisco	Display hotel pictures
C. I. Ishiguro		Tri-colored photography.
Allen C. Rush	Los Angeles	System burning crude oil.
E. A. Meacham	Riverside	Security ladders—strength and utility.
State of California	Sacramento	Lithograph stone.
Anna Brigman	Berkeley	Art photography.
C. P. Bailey & Sons	San Jose	Angora goat rugs, gloves, etc.
Santa Barbara County		Grains.
Marysville Wool Scouring Co.	Marysville	Wool in cleaning process.
Ennis Brown Co.	Sacramento	Beans.
Pacific Fertilizer Co	Oakland	Fertilizer, bone meal, chemicals, poultry food.
Riverside County		Model of irrigated orchard.
Sacramento Valley		Japanese rice.
Los Angeles Farming & Milling Co	Los Angeles	Wheat and barley.
Imperial Chamber of Commerce		Wheat and barley.
E. Clemens Horst Co	San Francisco	Hops
Thompson & Barnes	Santa Rosa	Hops.
F. W. Braun	Los Angeles	Hand fumigating outfit.
Ventura County		Lima bean straw.
Electric Iron Co.	Shasta County	Pig iron smelted by electricity.
State of California	Sacramento	Lithia ore.
Simpson & Poinie	San Diego	Granite.
San Francisco Public Schools		School art work.
California School of Mechanical Arts	San Francisco	Drawing and industrial work.
California Polytechnic School	San Francisco	Industrial work.
Cogswell Polytechnical College	San Francisco	Industrial work & photographs.
University of California	Berkeley	Transparencies showing University building activities, etc.
Oakland Public High Schools	Oakland	School art and industrial work.
Oakland Public Elementary Schools	Oakland	School art and industrial work.
San Rafael High School	San Rafael	Relief map
Palo Alto Public Schools	Palo Alto	Display art and industrial work.
State Normal School	San Jose	Model of Parthenon, students work.
Stockton Public Elementary Schools		General school exhibit.
Stockton Public High Schools		General school exhibit.
Fresno Public Schools		School, industrial and art work.
Kern County Public Schools		School photographs, drawings and botanical collections.
Los Angeles Public Schools		School, art and industrial work.
Los Angeles Polytechnic School		Art and industrial work.
Long Beach High School		Art and industrial work
Santa Ana Public Schools		School, art and industrial work.
Redlands Public Schools		Drawing and industrial work
State Normal School	San Diego	School, art and industrial work.
State of California	Sacramento	Installation art exhibit.
William Keith	Berkeley	Oil paintings.
Bruce Porter	San Francisco	Oil paintings.
Joseph Greenebaum	Los Angeles	Oil paintings.
J. Bond Francisco	Los Angeles	Oil paintings.

GOLD MEDALS—Continued

EXHIBITOR	ADDRESS	AWARD ON—
Edwin Deakin.....	Berkeley.....	Oil paintings.
Chris Jorgenson.....	San Francisco..	Oil paintings.
John M. Gamble.....	Santa Barbara	Oil paintings.
R. L. Partington.....	Berkeley	Oil paintings.
G. Cadanasso.....	San Francisco..	Oil paintings.
Jean Mannheim.....	Los Angeles...	Oil paintings.
Oscar Kunath.....	Los Angeles ..	Oil paintings.
Mme. H. Heynsen-Jahn.....	Los Angeles ..	Oil paintings.
Alexander Harmer.....	Santa Barbara	Oil paintings.
Theodore Wores.....	San Francisco..	Oil paintings.
Fred Yates.....	San Francisco..	Oil paintings.
H. J. Breuer.....	San Francisco..	Oil paintings.
Chas. Rollo Peters ..	San Francisco..	Oil paintings.
Henry Raschen.....	San Francisco..	Oil paintings.
Niels Hagerup.....	San Francisco..	Oil paintings.
Wm. L. Judson.....	Los Angeles... .	Oil paintings.
Emil Carlsen.....	San Francisco..	Oil paintings.
Francis E. Duval.....	Los Angeles ..	Oil paintings.
Helen Hyde.....	San Francisco..	Japanese prints.
Fannie E Nute.....	Los Angeles ..	Miniatures.
L Prather Waterbury.....	Redlands.....	Miniatures.
Lillie V. O'Ryan.....	San Francisco..	Miniatures.

SILVER MEDALS

State of California.....	Sacramento....	Topographical map of San Francisco bay.
State of California.....	Sacramento ..	Plan of traveling libraries and photographs.
Sacramento Public Schools	Display industrial training.
State Normal School	Chico	Art and industrial work.
Berkeley Public Schools	School art work.
State Institute for Deaf & Blind	Berkeley	Industrial work.
Sonoma County Public Schools	Santa Rosa	School, industrial and art work.
Monterey Public Schools	School, art and industrial work, and elementary science collection.
Ventura County Public Schools.....	School, industrial and art work.
Wilmerding School of Industrial Art.....	School, art and industrial work.
State Normal School	Los Angeles ..	Statistical chart, photographs and catalogues.
Whittier State School.....	Industrial work.
Pasadena Public Schools	School, art and industrial work.
San Diego County	Relief map of San Diego County.
San Diego Co. Public Schools.....	Photographs and elementary science collections.
San Bernardino Co Pub Schools	School, industrial and art work.
F. Thompson	Santa Cruz ...	Yellow calla lillies.
Justinian Caire Co	San Francisco..	Assayers' laboratory supplies.
Napa & Sonoma Wine Co	San Francisco..	Zinfandel.
Napa & Sonoma Wine Co	San Francisco..	El Molino.
Napa & Sonoma Wine Co	San Francisco..	Johannisburg Riesling.

SILVER MEDALS—Continued

EXHIBITOR	ADDRESS	AWARD ON—
Lachman & Jacobi.....	San Francisco..	Sauterne.
Lachman & Jacobi.....	San Francisco..	Riesling.
Lachman & Jacobi.....	San Francisco..	Cabernet.
H. Jevene.....	Los Angeles ...	Riesling.
California Wine Association..	San Francisco..	Gutedel.
California Wine Association..	San Francisco..	Hock.
California Winery	Sacramento ..	Riesling.
Sunset Wine Co.....	Los Angeles....	Sauterne.
Edward Germain Wine Co....	Los Angeles....	Sauterne.
Edward Germain Wine Co....	Los Angeles....	Claret.
C. Schilling & Co.....	San Francisco..	Sauterne.
San Diego Brewing Co	San Diego	Beer
Alhambra Natural Water Co.	Martinez	Mineral water.
Caliente Mineral Water Co ..	Agua Caliente	Mineral water.
The Rosenblatt Co.....	San Francisco..	Sauterne, Sierra Campo.
The Rosenblatt Co.....	San Francisco..	Claret.
The Rosenblatt Co.....	San Francisco..	Burgundy, Royal type.
The Rosenblatt Co.....	San Francisco..	Grape juice.
Calwa Products Co	San Francisco..	Unfermented grape juice.
California Grape Juice Co....	Los Angeles....	Unfermented grape juice.
California Mission Imp. Co ..	Cucamonga...	Unfermented grape juice.
Lodi Fruit Products Co	Lodi	Unfermented grape juice.
O. J. Steinwand	Fresno	Unfermented grape juice.
California Wire Cloth Co.....	Oakland	Assorted wire cloth.
T. J. Hammond	Fresno	Dried figs.
Los Angeles Olive Growers As'n	Ripe olives.
Pioneer Pickle Works	Sacramento ..	Pickles.
Point Lobos Canning Co	Monterey.....	Canned abalone.
Annie S. Hatch	San Francisco..	Sculpture.
Bertha Boye	San Francisco..	Sculpture.
Elizabeth Ferrea	San Francisco..	Sculpture.
Mrs. C. S. Sargent	San Francisco..	Bookbinding.
Frances Brewster	San Francisco..	Bookbinding.
Belle McMurty.....	San Francisco..	Bookbinding.
M. Meade	San Francisco..	Bookbinding.
State of California.....	Sacramento ..	Iron ores.
State of California.....	Sacramento...	Obicular diorite.
State of California.....	Sacramento ..	Magnesite ores.
State of California.....	Sacramento ..	Manganese ores.
State of California.....	Sacramento...	Building stone, granite, etc.
State of California.....	Sacramento ..	Lubricating oil.
State of California.....	Sacramento...	Crude and refined borax.
State of California.....	Sacramento...	Fire clay.
State of California.....	Sacramento...	Asbestos.
State of California.....	Sacramento ..	Fuller's earth.
San Diego County	Minerals.
Siskiyou County	Tufa.
Sacramento County.....	Hemp.
A. Weed Lumber Co	Weed	Manufactured doors & shingles.
California Paint Co.....	Oakland	Paints, rubber, graphite, roofing, leads and colors.
Pacific Plating Co	Los Angeles....	Bungalow hardware.
Fred Nichols	Oakland	Fire proof art metal doors.
Bakewell & Brown	San Francisco..	Perspectives, residence, bank, ex- terior and interior.
Allen C. Rush	Los Angeles....	Railway tie.

SILVER MEDALS—Continued

EXHIBITOR	ADDRESS	AWARD ON—
Miss Rutherford	Los Angeles	Carved wood.
United Studios Inc	San Francisco	Cement garden pots.
Mrs. Addie Pell	Pacific Grove	Hammered copper and brass.
Elizabeth Waggoner	Los Angeles	Metal work.
O'Hara & Livermore	San Francisco	Leather and water color screens.
Louis Fleckenstein	Los Angeles	Art photography.
Lucy R. Lamb	San Francisco	Hand decorated china.
M. E. Griffin	San Francisco	Hand decorated china.
L. O. Willits	San Francisco	Hand decorated china.
Mrs B. J. Arthur	Los Angeles	Hand decorated china.
Mrs. E. Elliott	Los Angeles	Hand decorated china.
Mrs. Harry Andrews	Los Angeles	Hand decorated china.
Mrs. H. G. Simpson	Los Angeles	Hand decorated china.
Agnes Peterson	Los Angeles	Hand decorated china.
Mrs. L. S. Guest	Los Angeles	Hand decorated china.
Olive Newcomb	Los Angeles	Hand decorated china.
Bess Edwards	Los Angeles	Hand decorated china.
Margaret Clapp	Los Angeles	Hand decorated china.
Laura Adams Armer	Berkeley	Art photography.
Brugierre & Eisen	San Francisco	Art & commercial photography.
John R. Loftus Co	Meloland	Raw cotton.
Knox Mfg. Co	Pasadena	Gophergo.
University of California	Berkeley	Seeds and grain in glass.
State of California	Sacramento	Redwood facade.
McCloud River Lumber Co		Display lumber in planks, etc.
Siskiyou County	Yreka	Installation gold, gold quartz and mineral ores.
Jas. A. Jasper	San Diego	Installation silk and cocoons.
Jas. A. Jasper	San Diego	Installation gems and crystals.
Sugar & White Pine Agency	San Francisco	Yellow pine planks.
Chamber of Commerce	Santa Cruz	Processed fruits.
Pruner & Ostrander		Grapes.
Vacaville Fruit Co	Vacaville	Plums.
Chamber of Commerce	Stockton	Fruits and vegetables.
T J. Bryan	Lemoncove	Oranges.
C. W. Fox	San Diego	Lemons.
Arthur Jack	Julian	Apples.
H. F. Wilcox	Julian	Apples.
Silva-Bergtholdt Co	Newcastle	Plums.
A. Martin	Little Rock	Almonds.
Geo. D. Lee	Compton	Grapes.
Chamber of Commerce	Los Angeles	Peanuts.
Frank Johnson		Peaches.
W. O. Davies	Florin	Grapes.
Cutter Bros	Sacramento	Vegetables.
F. W. Barkhaus	Newcastle	Peaches.
Penryn Fruit Co	Penryn	Plums.
Earl Fruit Co	Sacramento	Cherries.
E J. Camp	Florin	Grapes.
Salyer-Baumeister Co	Los Angeles	Pianos.
Dolge-Posey Co	Los Angeles	Piano sounding board.
Segnogram Print	Los Angeles	Display job print work, leaflets, circulars, artistic notices, etc.
Oscar Maurer	Berkeley	Art photography.
Wm. Luch	Marysville	Shield for stallions.
Grace Nicholson	Pasadena	Ethnological collection.

SILVER MEDALS—Continued

EXHIBITOR	ADDRESS	AWARD ON—
Jas. A. Jasper	San Diego	General display gems & crystals.
Jas. A. Jasper	San Diego	Case of minerals.
Eugen Neuhaus	San Francisco	Oil painting.
Gordon Coutts	Berkeley	Oil painting.
Benjamin Brown	Los Angeles	Oil painting.
Lydia S. Price	Los Angeles	Oil painting.
Florine Hyer	Los Angeles	Oil painting.
Annie Harmon	San Francisco	Oil painting.
L. M. Carpenter	Berkeley	Oil painting.
Elizabeth Borglum	Santa Barbara	Oil painting.
Caroline Callahan	San Francisco	Oil painting.
W. F. Jackson	Sacramento	Oil painting.
Della Vernon	Oakland	Oil painting.
Martin J. Jackson	Los Angeles	Oil painting.
Robert Wagner	Santa Barbara	Oil painting.
William Cole	Los Angeles	Oil painting.
Granville Redmond	Los Angeles	Oil painting.
Elizabeth Strong	Berkeley	Oil painting.
C. A. Fries	San Diego	Oil painting.
Grace Hudson	Ukiah	Oil painting.
A. B. Chittenden	San Francisco	Oil painting.
H. Heynsen-Jahn	Los Angeles	Pastelle.
A. Romers Shawhan	San Francisco	Pastelle
L. P. Latimer	San Francisco	Water color.
Susan S. Looseley	San Francisco	Water color.
M. Fancher Pettis	Berkeley	Water color.
Eugene Torrey	Los Angeles	Water color.
E. B. Currier	San Francisco	Water color and oils.
Mary Harland	Los Angeles	Miniatures.
Alice Ludovici	Pasadena	Miniatures.

BRONZE MEDALS

State of California	Sacramento	Nitre.
State of California	Sacramento	Lead ores.
State of California	Sacramento	Lime and limestone.
State of California	Sacramento	Copper ores.
State of California	Sacramento	Sulphur ores.
State of California	Sacramento	Gypsum ores.
State of California	Sacramento	Natural salt.
Automatic Safety Pulley Block Co	San Diego	Pulley blocks.
California Magnesite Co		Products of magnesite.
SantaCruz Portland CementCo	Davenport	Cement and products.
Siskiyou County		Building stones.
Siskiyou County		Marbles
Roeding Olive Co	Fresno	Ripe olives.
J. C. Kubias	Redlands	Ripe olives.
O'Hara & Livermore	San Francisco	Bookbinding.
Napa County Public Schools		School art work & photographs.
Bakersfield Public Schools		School industrial work.
Harvard School	Los Angeles	School, art and industrial work.

BRONZE MEDALS—Continued

EXHIBITOR	ADDRESS	AWARD ON—
Santa Barbara Co. Public Schools		Photographs school buildings and school work.
Whittier Public High School		School, art and industrial work.
Redwood Mrs. Association	San Francisco.	Manufactured doors.
Meyers & Ward	San Francisco.	Perspective of hotel & interior.
L. C. Mullhardt	San Francisco.	Perspective of office building, residence, landscape work.
Emily Pritchford	Berkeley	Art photography.
American Leather Co.	Los Angeles	Burned leather articles.
W. E. Dassonville	San Francisco.	Art photography.
Limoneira Company	Santa Paula	Installation lemon exhibit.
Jas. A. Jasper	San Diego	Installation Old Mission olives and olive oil.
Santa Barbara County		Assorted varieties pickled olives.
Williams & Newberry	Porterville.	Pomegranates.
J. C. Naylor		Peaches.
J. H. Kite	Manson	Peaches.
W. B. Jennings	Visalia	Peaches.
J. E. Lebon	Visalia	Peaches.
G. H. Reynolds	Orosi	Grapes.
E. Barnard	Ventura	Beans.
F. M. Mayes	Orosi	Plums.
C. Scrivner	Tulare	Peaches.
Harry Thompson	Tulare	Peaches.
Lee Gates	Tulare	Apricots.
F. B. McKevitt	Vacaville	Fruits in season.
William Quigley	Oak Bar	Fruits in season.
Thomas Hegler	Walker	Vegetables.
S. H. Soule	Shasta	Apples.
J. Cone	Stockton	Fruits in season.
F. W. Leffler	Lodi	Grapes.
Mrs. J. Ridley	Lodi	Grapes.
J. P. Dargitz	Acampo	Prunes.
Rialto Citrus Fruit Union		Tomatoes.
Robert Clifford	Julian	Apples.
Rex B. Clark	Julian	Apples.
C. R. Willington	Julian	Apples.
Chester Gunn	Julian	Apples.
J. R. Williams	Julian	Apples.
Schnabel Bros Co.	Newcastle	Plums.
W. J. Wilson & Son	Newcastle	Plums.
Tokayano Rancho	Colfax	Grapes.
J. A. Burns	Toluca	Peaches.
J. W. Batchelor	Fruitland	Quinces.
D. H. Baldwin	Mangana	Apples.
T. W. Backus	Fruitland	Pears.
A. Gast	Fruitland	Peppers.
H. Atkinson	Watsonville	Fruits.
Peters & Evans	Riverside	Apples.
F. M. Parrish	Oak Glen	Apples.
I. Ford	Redlands	Apples.
Oak Glen Ranch.	Redlands	Apples.
F. Radovan	Watsonville	Apples.
Ed Thompson	Watsonville	Apples.
J. W. Watters	Watsonville	Apples.
R. H. Goodrich	Watsonville	Apples.

BRONZE MEDALS—Continued

EXHIBITOR	ADDRESS	AWARD ON—
Mr. Goodchild		Apricots.
Watsonville Land & Fruit Co.		Apricots.
Mrs. A. E. Lewis	Florin	Peaches.
J. F. Elliott	Courtland	Plums.
Mr. Strickland	Newcastle	Plums.
Daleland Rancho	Mecca	Grapes.
B. G. Johnson	Mecca	Dates.
J. A. Filcher	Sacramento	Miniature stamp mill.
Blanche Cummings	San Francisco	Art photographs.
Peterson Rapid Wrench Co.	San Francisco	Rapid vise.
John L. Russell	Albion	Tubular level.
Chas. L. Wilson	Los Angeles	Installation peanut portiers.
Marian M. Williams	Los Angeles	Water color.
Helen Coan	Los Angeles	Water color.
L. Maynard Dixon	San Francisco	Water color.
Ada F. Lathrop	Santa Monica	Water color.
Marie A. Ney	Los Angeles	Water color.
Mary Harland	Los Angeles	Water color.
O. Hansen	San Francisco	Water color.
Alice Best	San Francisco	Pastelles.
N. Danely Brooker	Los Angeles	Colored etchings.
Caroline Rixford Johnson	San Francisco	Oil paintings.
Blanche D. Cole	Los Angeles	Oil paintings.
William Coulter	San Francisco	Oil paintings.
Helen Maude Raeburn	San Francisco	Oil paintings.
Chas. A. Rogers	Los Angeles	Oil paintings.
Perham Nahl	Berkeley	Oil paintings.
Charles Louis Turner	San Francisco	Oil paintings.
D. L. Kooreman	Berkeley	Oil paintings.
A. W. Best	San Francisco	Oil paintings.
Blanche Letcher	Berkeley	Oil paintings.
Carl Jonnevold	San Francisco	Oil paintings.
Alice Best	Berkeley	Oil paintings.
Geo. W. Kegg	Berkeley	Oil paintings.
H. G. Villa	Los Angeles	Oil paintings.
Helen Coan	Los Angeles	Oil paintings.
Sarah Bender DeWolfe	San Francisco	Oil paintings.
Bertha Stringer Lee	San Francisco	Oil paintings.
Langdon Smith	Los Angeles	Oil paintings.
Mary Hinkson	Sacramento	Oil paintings.

HONORABLE MENTION

State of California	Sacramento	Mineral paints.
State of California	Sacramento	Chalk.
Maud Daggett	Los Angeles	Sculpture.
Western Creameries Co.	San Francisco	Empty butter cartons.
Napa Business College	Napa	Photographs and drawings.
Mills College	Oakland	Photographs.
Miss Harker's School for Girls	Palo Alto	Photographs of school buildings and grounds.
Los Angeles Co. Public Schools		Photographs school buildings.

HONORABLE MENTION—Continued

EXHIBITOR	ADDRESS	AWARD ON—
Riverside Co. Public Schools		School photographs.
Castilleja School		School photographs.
J. Walter Dolliver	San Francisco	Model of Santa Rosa courthouse.
George Peterson	San Francisco	Ceiling decorations.
John C. Austin	San Francisco	Perspective liberal arts building.
Jas. A. Jasper	San Diego	Installation fresh fruit exhibit.
Jas. A. Jasper	San Diego	Installation onyx and climatic displays
State of California	Sacramento	Installation plant and shrub exhibit around building.
H. C. Parkinson	Berkeley	Cold knob pot covers.
S. J. Davis	Eureka	Curios and pictures
Jennie D. Parker	Los Angeles	Oil painting.
Sara White Isaman	Los Angeles	Oil painting.
Hanna T. Jenkins	Clairmont	Oil painting.
Mary Stewart Dunlap	Pasadena	Oil painting.
Hanson Puthoff	Los Angeles	Oil painting.
J. W. Nicoll	Los Angeles	Oil painting.
Kate Cory	Los Angeles	Oil painting.
Joseph J. Mora	San Francisco	Oil painting
R. Hamilton Mohler	Los Angeles	Oil painting.
Ralph Mocine	Los Angeles	Oil painting.
F. P. Brackett	Los Angeles	Oil painting.
Josephine W. Culbertson	San Francisco	Water color.
Lillian Drain	Los Angeles	Monotypes.
H. Hammerstrom	San Francisco	Monotypes and oil paintings.
C. M. Moore	Los Angeles	Pen and ink sketches.
E. A. Burbank	San Francisco	Pencil drawings.
Ried Bros	San Francisco	Architecture.



UNIVERSITY OF CALIF.

to a fine of
de, increasing
Books not in
tion is made before

BEFORE

THIS BOOK IS

Books p
50c per v
to \$1.00
dema
exp

SEP 12 1931

SEP 12 1931

75m-7,'30

Photomount
Pamphlet
Binder
Gaylord Bros.
Makers
Syracuse, N. Y.
PAT. JAN 21, 1908

U. C. BERKELEY LIBRARIES



061399110

533071

T890
F3C3

UNIVERSITY OF CALIFORNIA LIBRARY

