

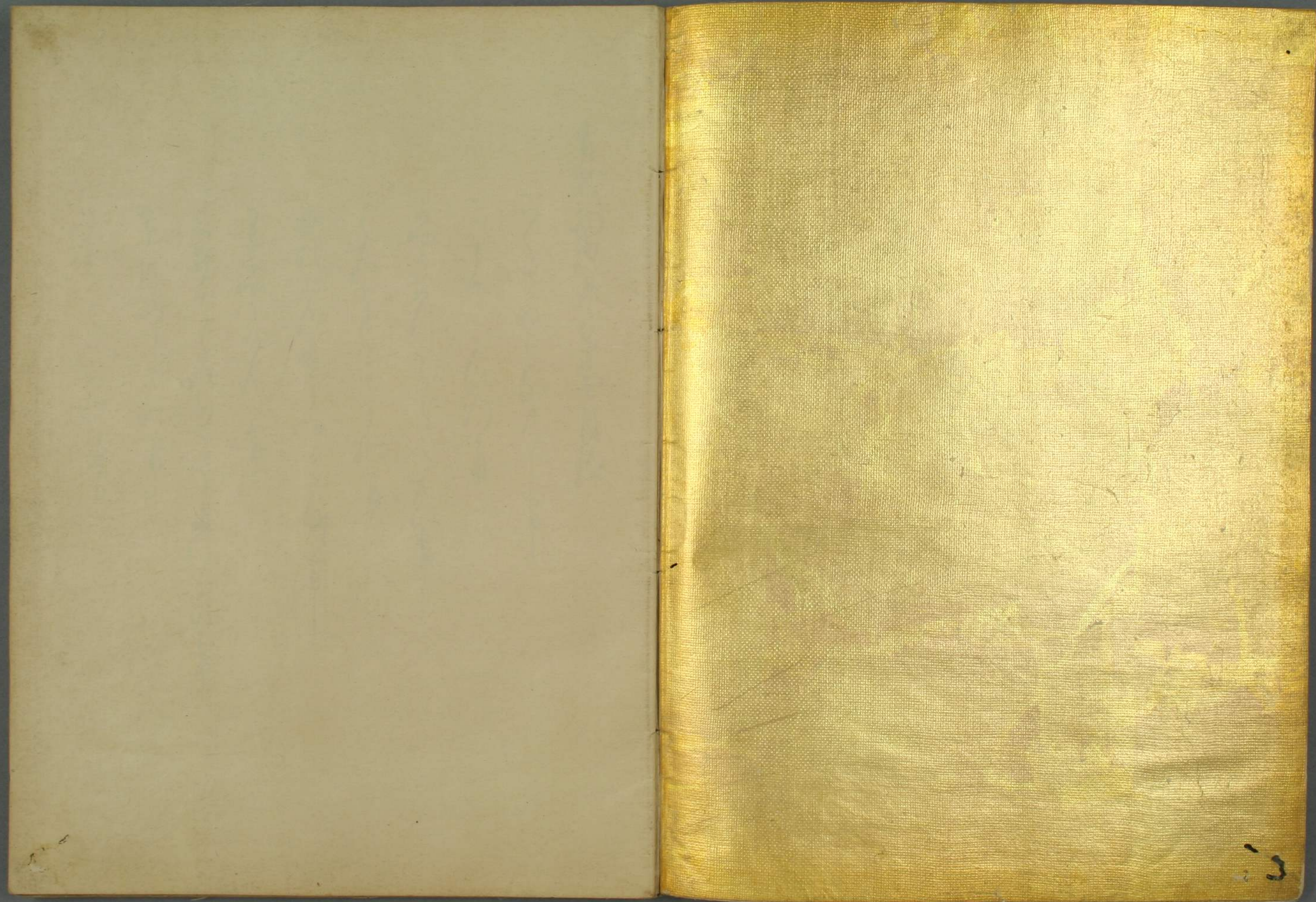


雷我抄 七

特別  
95  
15643  
7









曹叔初撰卷第七目錄

一、  
二、  
三、  
四、  
五、  
六、  
七、  
八、  
九、  
十、



Illegible cursive handwriting, likely a signature or title.

曹秋池源其弟十



Illegible cursive handwriting, likely a signature or title.



Handwritten text in a cursive script, likely Persian or Urdu, spanning the left page of the manuscript.

Handwritten text in a cursive script, likely Persian or Urdu, spanning the right page of the manuscript.



Handwritten text in a cursive script, likely a historical document or letter. The text is written in a dark ink on aged paper. It consists of approximately 10 lines of text, starting with a large initial letter. The script is highly stylized and characteristic of the early modern period.

Handwritten text in a cursive script, continuing from the previous page. It consists of approximately 10 lines of text, starting with a large initial letter. The script is highly stylized and characteristic of the early modern period.

Handwritten text in a cursive script, continuing from the previous page. It consists of approximately 10 lines of text, starting with a large initial letter. The script is highly stylized and characteristic of the early modern period.







بِسْمِ اللّٰهِ الرَّحْمٰنِ الرَّحِیْمِ

۱  
۲  
۳  
۴  
۵  
۶  
۷  
۸  
۹  
۱۰  
۱۱  
۱۲  
۱۳  
۱۴  
۱۵  
۱۶  
۱۷  
۱۸  
۱۹  
۲۰  
۲۱  
۲۲  
۲۳  
۲۴  
۲۵  
۲۶  
۲۷  
۲۸  
۲۹  
۳۰  
۳۱  
۳۲  
۳۳  
۳۴  
۳۵  
۳۶  
۳۷  
۳۸  
۳۹  
۴۰  
۴۱  
۴۲  
۴۳  
۴۴  
۴۵  
۴۶  
۴۷  
۴۸  
۴۹  
۵۰  
۵۱  
۵۲  
۵۳  
۵۴  
۵۵  
۵۶  
۵۷  
۵۸  
۵۹  
۶۰  
۶۱  
۶۲  
۶۳  
۶۴  
۶۵  
۶۶  
۶۷  
۶۸  
۶۹  
۷۰  
۷۱  
۷۲  
۷۳  
۷۴  
۷۵  
۷۶  
۷۷  
۷۸  
۷۹  
۸۰  
۸۱  
۸۲  
۸۳  
۸۴  
۸۵  
۸۶  
۸۷  
۸۸  
۸۹  
۹۰  
۹۱  
۹۲  
۹۳  
۹۴  
۹۵  
۹۶  
۹۷  
۹۸  
۹۹  
۱۰۰

۱  
۲  
۳  
۴  
۵  
۶  
۷  
۸  
۹  
۱۰  
۱۱  
۱۲  
۱۳  
۱۴  
۱۵  
۱۶  
۱۷  
۱۸  
۱۹  
۲۰  
۲۱  
۲۲  
۲۳  
۲۴  
۲۵  
۲۶  
۲۷  
۲۸  
۲۹  
۳۰  
۳۱  
۳۲  
۳۳  
۳۴  
۳۵  
۳۶  
۳۷  
۳۸  
۳۹  
۴۰  
۴۱  
۴۲  
۴۳  
۴۴  
۴۵  
۴۶  
۴۷  
۴۸  
۴۹  
۵۰  
۵۱  
۵۲  
۵۳  
۵۴  
۵۵  
۵۶  
۵۷  
۵۸  
۵۹  
۶۰  
۶۱  
۶۲  
۶۳  
۶۴  
۶۵  
۶۶  
۶۷  
۶۸  
۶۹  
۷۰  
۷۱  
۷۲  
۷۳  
۷۴  
۷۵  
۷۶  
۷۷  
۷۸  
۷۹  
۸۰  
۸۱  
۸۲  
۸۳  
۸۴  
۸۵  
۸۶  
۸۷  
۸۸  
۸۹  
۹۰  
۹۱  
۹۲  
۹۳  
۹۴  
۹۵  
۹۶  
۹۷  
۹۸  
۹۹  
۱۰۰



Handwritten text in a cursive script, likely a form of Urdu or Persian, consisting of approximately 12 lines of text.

Handwritten text in a cursive script, likely a form of Urdu or Persian, consisting of approximately 12 lines of text.



Handwritten text in a cursive script, likely a historical record or account. The text is written in a single column on the left page of the manuscript.

Handwritten text in a cursive script, likely a historical record or account. The text is written in a single column on the right page of the manuscript.



Handwritten text in a cursive script, consisting of approximately 12 lines of text.

Handwritten text in a cursive script, consisting of approximately 12 lines of text.



Handwritten text in a cursive script, likely Persian or Urdu, consisting of approximately 12 lines of text.



Handwritten text in a cursive script, likely Persian or Urdu, consisting of approximately 12 lines of text.



Handwritten text in a cursive script, likely a form of shorthand or a specific dialect. The text is arranged in approximately 12 horizontal lines across the page.

Handwritten text in a cursive script, likely a form of shorthand or a specific dialect. The text is arranged in approximately 12 horizontal lines across the page.



Handwritten text in a cursive script, likely a historical document or letter. The text is written in a fluid, connected style across approximately 12 lines. The ink is dark and the paper shows signs of age.

Handwritten text in a cursive script, likely a historical document or letter. The text is written in a fluid, connected style across approximately 12 lines. The ink is dark and the paper shows signs of age.



Handwritten text in a cursive script, likely a form of Urdu or Persian, consisting of approximately 12 lines of text.

Handwritten text in a cursive script, likely a form of Urdu or Persian, consisting of approximately 12 lines of text.



Handwritten text in a cursive script, likely a historical document or manuscript. The text is written in a fluid, connected style across approximately 12 lines on the right page.

Handwritten text in a cursive script, likely a historical document or manuscript. The text is written in a fluid, connected style across approximately 12 lines on the left page.



Handwritten text in Urdu script, consisting of approximately 12 lines of text.

Handwritten text in Urdu script, consisting of approximately 12 lines of text.



Handwritten text in a cursive script, likely a form of Urdu or Persian, consisting of approximately 12 lines of text.

Handwritten text in a cursive script, likely a form of Urdu or Persian, consisting of approximately 12 lines of text.



Handwritten text in a cursive script, likely a historical document or letter. The text is written in a dark ink on aged paper. It consists of approximately 12 lines of text, starting with a large initial letter. The script is highly stylized and characteristic of the early modern period.

Handwritten text in a cursive script, likely a historical document or letter. The text is written in a dark ink on aged paper. It consists of approximately 12 lines of text, starting with a large initial letter. The script is highly stylized and characteristic of the early modern period.



Handwritten text in a cursive script, likely Persian or Urdu, consisting of approximately 12 lines of text.

Handwritten text in a cursive script, likely Persian or Urdu, consisting of approximately 12 lines of text.



Handwritten text in a cursive script, likely a form of Urdu or Persian, consisting of approximately 12 lines of text.

Handwritten text in a cursive script, likely a form of Urdu or Persian, consisting of approximately 12 lines of text.



Handwritten text in a cursive script, likely a historical document or manuscript. The text is written in a dark ink on aged, yellowish paper. It consists of approximately 12 lines of text, with some lines starting with a small decorative flourish or initial. The script is highly stylized and difficult to decipher without a key.

Handwritten text in a cursive script, likely a historical document or manuscript. The text is written in a dark ink on aged, yellowish paper. It consists of approximately 12 lines of text, with some lines starting with a small decorative flourish or initial. The script is highly stylized and difficult to decipher without a key.



Handwritten text in a cursive script, likely a form of Urdu or Persian, consisting of approximately 12 lines of text.

Handwritten text in a cursive script, likely a form of Urdu or Persian, consisting of approximately 12 lines of text.



Handwritten text in a cursive script, likely a historical document or manuscript. The text is written in a dark ink on aged, yellowish paper. It consists of approximately 12 lines of text, with some lines starting with a small decorative flourish or initial. The script is highly stylized and difficult to decipher without a key.

Handwritten text in a cursive script, likely a historical document or manuscript. The text is written in a dark ink on aged, yellowish paper. It consists of approximately 12 lines of text, with some lines starting with a small decorative flourish or initial. The script is highly stylized and difficult to decipher without a key.



Handwritten text in a cursive script, likely a historical document or manuscript. The text is written in a dark ink on aged, yellowish paper. It consists of approximately 12 lines of text, with some lines starting with a small decorative flourish or initial. The script is dense and flowing, characteristic of early modern cursive handwriting.

Handwritten text in a cursive script, continuing from the previous page. The text is written in a dark ink on aged, yellowish paper. It consists of approximately 12 lines of text, with some lines starting with a small decorative flourish or initial. The script is dense and flowing, characteristic of early modern cursive handwriting.



قوله من اذنب ذنبا مغفورا فاعفوا عنه  
يا ايها الذين آمنوا انزلوا ما اوتيتكم  
من القرآن خفيا ولو كنتم اعداء  
لما اذعنوا لشيء مما اوتيتكم  
منه الا من اذعن بعد اذن الله  
فان الله شديد العقاب

يا ايها الذين آمنوا انزلوا ما اوتيتكم  
من القرآن جريا ولو كنتم اعداء  
لما اذعنوا لشيء مما اوتيتكم  
منه الا من اذعن بعد اذن الله  
فان الله شديد العقاب



Handwritten text in a cursive script, likely a historical document or manuscript. The text is written in a single column on the right page of an open book. The script is dense and characteristic of early modern European handwriting.

Handwritten text in a cursive script, likely a historical document or manuscript. The text is written in a single column on the left page of an open book. The script is dense and characteristic of early modern European handwriting.



Handwritten text in a cursive script, likely a form of Urdu or Persian, consisting of approximately 12 lines of text.

Handwritten text in a cursive script, likely a form of Urdu or Persian, consisting of approximately 4 lines of text.

Handwritten text in a cursive script, likely a form of Urdu or Persian, consisting of approximately 7 lines of text.



Handwritten text in a cursive script, likely a form of Urdu or Persian, consisting of approximately 12 lines of text.

Handwritten text in a cursive script, likely a form of Urdu or Persian, consisting of approximately 12 lines of text.



Handwritten text in a cursive script, likely Persian or Urdu, consisting of approximately 12 lines of text.

Handwritten text in a cursive script, likely Persian or Urdu, consisting of approximately 12 lines of text.



Handwritten text in a cursive script, likely Persian or Urdu, consisting of approximately 12 lines of text.

Handwritten text in a cursive script, likely Persian or Urdu, consisting of approximately 12 lines of text.



Handwritten text in a cursive script, likely a historical document or manuscript. The text is written in a dark ink on aged paper. It consists of approximately 12 lines of text, starting with a large initial letter. The script is highly stylized and characteristic of the early modern period.

Handwritten text in a cursive script, likely a historical document or manuscript. The text is written in a dark ink on aged paper. It consists of approximately 12 lines of text, starting with a large initial letter. The script is highly stylized and characteristic of the early modern period.







بسم الله الرحمن الرحيم  
الحمد لله رب العالمين  
والصلاة والسلام على  
سيدنا محمد وآله الطيبين  
الطاهرين أجمعين  
اللهم صل على محمد  
وعلى آل محمد  
الذين هم خير خلق  
أبدى خلقك  
صلى الله على  
محمد وآله  
الطاهرين  
الذين هم  
خير خلقك  
أبدى خلقك  
اللهم صل على  
محمد وآله  
الذين هم  
خير خلقك  
أبدى خلقك

اللهم صل على محمد  
وعلى آل محمد  
الذين هم خير خلقك  
أبدى خلقك  
اللهم صل على  
محمد وآله  
الذين هم خير خلقك  
أبدى خلقك  
اللهم صل على  
محمد وآله  
الذين هم خير خلقك  
أبدى خلقك  
اللهم صل على  
محمد وآله  
الذين هم خير خلقك  
أبدى خلقك  
اللهم صل على  
محمد وآله  
الذين هم خير خلقك  
أبدى خلقك



Handwritten text in a cursive script, likely Persian or Urdu, consisting of approximately 12 lines of text.

Handwritten text in a cursive script, likely Persian or Urdu, consisting of approximately 12 lines of text.



Handwritten text in a cursive script, likely a historical document or letter. The text is written in a dark ink on aged paper. It consists of approximately 12 lines of text, starting with a large initial letter 'M'. The script is highly stylized and characteristic of the early modern period.

Handwritten text in a cursive script, likely a historical document or letter. The text is written in a dark ink on aged paper. It consists of approximately 12 lines of text, starting with a large initial letter 'M'. The script is highly stylized and characteristic of the early modern period.



Handwritten text in a cursive script, likely a historical document or manuscript. The text is arranged in approximately 10 lines across the page.

Handwritten text in a cursive script, likely a historical document or manuscript. The text is arranged in approximately 10 lines across the page.



Handwritten text in a cursive script, likely a form of Urdu or Persian, consisting of approximately 12 lines of text.

Handwritten text in a cursive script, likely a form of Urdu or Persian, consisting of approximately 12 lines of text.



بسم الله الرحمن الرحيم  
الحمد لله رب العالمين  
والصلاة والسلام على  
سيدنا محمد وآله الطيبين  
الطاهرين أجمعين  
اللهم صل على محمد  
وعلى آل محمد  
الذين هم خير خلق  
أبدى خلقك  
صلى الله على  
محمد وآله  
الطيبين الطاهرين  
اللهم صل على  
سيدنا محمد  
وعلى آل محمد  
الذين هم خير خلق  
أبدى خلقك  
صلى الله على  
محمد وآله  
الطيبين الطاهرين  
اللهم صل على  
سيدنا محمد  
وعلى آل محمد  
الذين هم خير خلق  
أبدى خلقك  
صلى الله على  
محمد وآله  
الطيبين الطاهرين

اللهم صل على سيدنا محمد  
وعلى آل محمد  
الذين هم خير خلق  
أبدى خلقك  
صلى الله على  
محمد وآله  
الطيبين الطاهرين  
اللهم صل على  
سيدنا محمد  
وعلى آل محمد  
الذين هم خير خلق  
أبدى خلقك  
صلى الله على  
محمد وآله  
الطيبين الطاهرين  
اللهم صل على  
سيدنا محمد  
وعلى آل محمد  
الذين هم خير خلق  
أبدى خلقك  
صلى الله على  
محمد وآله  
الطيبين الطاهرين  
اللهم صل على  
سيدنا محمد  
وعلى آل محمد  
الذين هم خير خلق  
أبدى خلقك  
صلى الله على  
محمد وآله  
الطيبين الطاهرين



Handwritten text in Urdu script, likely a religious or scholarly passage, written in a cursive style on the right page of an open manuscript. The text consists of approximately 12 lines of dense, flowing script. The ink is dark brown and the paper shows signs of age with some discoloration.

Handwritten text in Urdu script, continuing the passage from the right page, written in a cursive style on the left page of an open manuscript. The text consists of approximately 12 lines of dense, flowing script. The ink is dark brown and the paper shows signs of age with some discoloration.



Handwritten text in a cursive script, likely a historical document or manuscript. The text is written in a dark ink on aged, yellowish paper. It consists of approximately 12 lines of text, starting with a large initial letter 'A' and ending with a period. The script is highly stylized and characteristic of the Ottoman or Persian calligraphic tradition.

Handwritten text in a cursive script, likely a historical document or manuscript. The text is written in a dark ink on aged, yellowish paper. It consists of approximately 12 lines of text, starting with a large initial letter 'A' and ending with a period. The script is highly stylized and characteristic of the Ottoman or Persian calligraphic tradition.



Handwritten text in a cursive script, likely a form of Urdu or Persian, consisting of approximately 12 lines of text.

Handwritten text in a cursive script, likely a form of Urdu or Persian, consisting of approximately 12 lines of text.



سے کہ جو اللہ تعالیٰ کے ہاں ہے وہ  
میں سے ہے۔ یہ تو ہے اللہ کے  
پروردگار کی طرف سے ہے۔ یہ  
ہے اللہ کے ہاں ہے۔ یہ ہے  
اللہ کے ہاں ہے۔ یہ ہے اللہ  
کے ہاں ہے۔ یہ ہے اللہ کے  
ہاں ہے۔ یہ ہے اللہ کے ہاں  
ہے۔ یہ ہے اللہ کے ہاں ہے۔

اللہ کے ہاں ہے۔ یہ ہے اللہ کے  
ہاں ہے۔ یہ ہے اللہ کے ہاں  
ہے۔ یہ ہے اللہ کے ہاں ہے۔  
یہ ہے اللہ کے ہاں ہے۔ یہ  
ہے اللہ کے ہاں ہے۔ یہ ہے  
اللہ کے ہاں ہے۔ یہ ہے اللہ  
کے ہاں ہے۔ یہ ہے اللہ کے  
ہاں ہے۔ یہ ہے اللہ کے ہاں  
ہے۔ یہ ہے اللہ کے ہاں ہے۔



Handwritten text in a cursive script, likely a form of Urdu or Persian, consisting of approximately 12 lines of text.

Handwritten text in a cursive script, likely a form of Urdu or Persian, consisting of approximately 12 lines of text.







Handwritten text in a cursive script, likely a historical document or manuscript. The text is written in a dark ink on aged paper. It consists of approximately 12 lines of text, starting with a large initial letter. The script is highly stylized and characteristic of the Ottoman or Persian calligraphic tradition.

Handwritten text in a cursive script, likely a historical document or manuscript. The text is written in a dark ink on aged paper. It consists of approximately 12 lines of text, starting with a large initial letter. The script is highly stylized and characteristic of the Ottoman or Persian calligraphic tradition.



Handwritten text in a cursive script, likely Persian or Urdu, consisting of approximately 12 lines of text.

Handwritten text in a cursive script, likely Persian or Urdu, consisting of approximately 12 lines of text. This page contains faint bleed-through from the reverse side of the leaf.



کتابت فی شهر ربیع الثانی سنه ۱۰۸۰

بسم الله الرحمن الرحيم  
الحمد لله رب العالمين  
والصلاة والسلام على  
سيدنا محمد وآله الطيبين  
الطاهرين  
الذين هم خاتم النبيين  
ولا نبي بعدهم  
والله اعلم بالصواب

الحمد لله رب العالمين  
والصلاة والسلام على  
سيدنا محمد وآله الطيبين  
الطاهرين  
الذين هم خاتم النبيين  
ولا نبي بعدهم  
والله اعلم بالصواب



Handwritten text in a cursive script, likely a letter or a page from a manuscript. The text is written in a fluid, connected style across approximately 12 lines.

Handwritten text in a cursive script, continuing from the previous page. The text is written in a fluid, connected style across approximately 12 lines.



Handwritten text in a cursive script, likely Persian or Urdu, consisting of approximately 12 lines of text.

Handwritten text in a cursive script, likely Persian or Urdu, consisting of approximately 12 lines of text.



Handwritten text in a cursive script, likely a historical document or manuscript. The text is written in a dark ink on aged, yellowish paper. It consists of approximately 12 lines of text, with some lines starting with a large initial letter. The script is highly stylized and difficult to decipher without a key.

Handwritten text in a cursive script, continuing from the previous page. It consists of approximately 12 lines of text, with some lines starting with a large initial letter. The script is highly stylized and difficult to decipher without a key.



Handwritten text in a cursive script, likely Persian or Urdu, consisting of approximately 14 lines of text.

Handwritten text in a cursive script, likely Persian or Urdu, consisting of approximately 14 lines of text.







Handwritten text in a cursive script, likely a historical document or manuscript, consisting of approximately 12 lines of text.

Handwritten text in a cursive script, continuing from the previous page, consisting of approximately 12 lines of text.

曹魏初紀卷第七終



1847

Handwritten text in cursive script, appearing as bleed-through from the reverse side of the page. The text is mostly illegible due to fading and bleed-through.



圖書印



