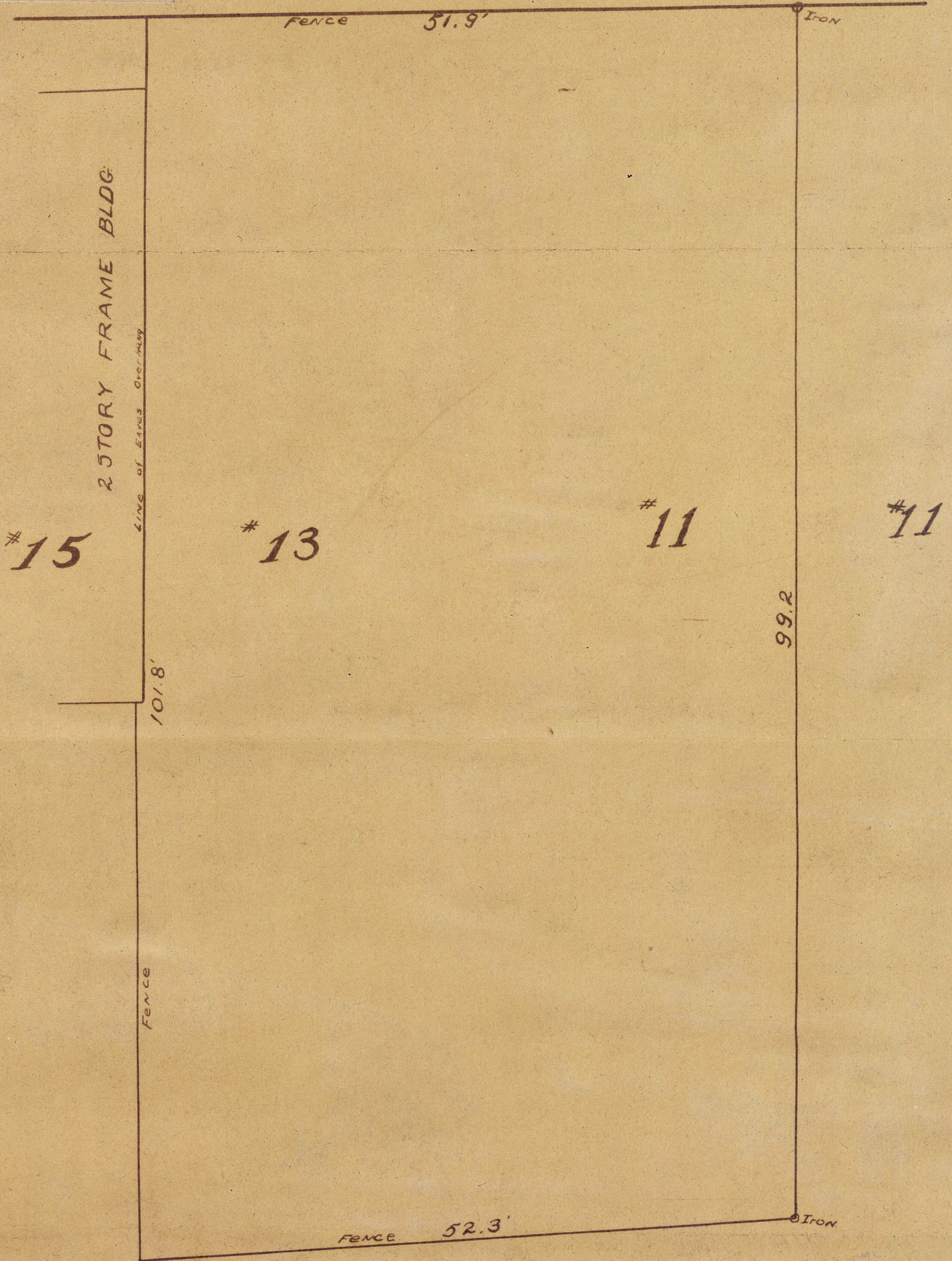


ASHTON

STREET



PLAT of *13 AND THE WESTERN PART OF *11
 ASHTON STREET CHARLESTON S.C. ABOUT TO BE
 CONVEYED BY J.F O'ROUKE TO W.T KING. SURVEYED
 FROM LINES OF OCCUPATION. MAR. 1920.

BY

McCready Bros & Cheves.
 CIVIL ENGINEERS CHARLESTON S.C.

SCALE - 1" = 10'