

G.31.H
RODD.H.

31.4

R512



FRONTISPIECE TO H. RODDS'S CATALOGUE OF AUTHENTIC PAINTED PORTRAITS.



John's Carpenter



Miss Abbott



E. of Leicester



Portrait



E. of Orrey



Two portraits



Three Men's Portraits



E. of Widdington



Sam'l Clarke DD



E. of Lloyd



Portrait



Portrait



Edward G.



Portrait



Sir W. Allen

FRONTISPIECE TO H. RODD'S CATALOGUE OF AUTHENTIC PAINTED PORTRAITS.



Sir John Stoughton
89

125



Henry 8th

59



Dore family of Ribston

33



Sir R. Sadleir

36



D. of Gynwath

44



E. of Tenbroeke

74



G. of Terwalle

43



W. of Dalmans

8



R. of Sheldon

118



Charles 2nd

22



J. of Anderson

2



E. of Clarendon

25



W. of Campbell

27



M. of Gow



J. of 2

76



Lady Torrington

131



A. of B. of B.

38



Lord Torrington

131



W. of B. of B.

21



Thomas Wilson, D.D.

144



A

CATALOGUE

OF

AUTHENTIC PORTRAITS,

PAINTED IN OIL, ON PANNEL AND CANVAS,

MINIATURES, MARBLE BUSTS, &c.

Among them are many of our

**KINGS, NOBILITY, LITERARY CHARACTERS,
NAVAL AND MILITARY HEROES,**

And others eminent in

CHURCH AND STATE;

AND SEVERAL NEARLY ALLIED TO THE

Existing Noble Families;

BY THE MOST EMINENT COTEMPORARY ARTISTS.

ALPHABETICALLY ARRANGED, WITH BIOGRAPHICAL AND DESCRIPTIVE PARTICULARS.

“In a good Portrait we conceive a better opinion of the beauty, sense, breeding, and other good qualities of the person than from seeing themselves, and yet without being able to say in what particular it is unlike, for nature must be ever in view. ‘Let a man read a character in my Lord Clarendon (and certainly never was there a better painter in that kind), he will find it improved by seeing a picture of the same person by Vandyck.’”

ALSO A FEW

Carvings in Wood, Carved Frames, &c.

And a fine Original Bust of

HANDEL, BY ROUBILIAC.

The whole of which are now offered for Sale, at the Prices affixed,

By H. RODD, 9, GREAT NEWPORT STREET, LONG ACRE.

LONDON: PRINTED BY J. COMPTON, MIDDLE STREET, CLOTH FAIR, 1824.

CATALOGUE

AUTHENTIC PORTRAITS.

PAINTED IN OIL ON PANEL AND CANVAS

MINIATURES, MARBLE BUSTS, &c

Known than any other of our

KINGS, NOBILITY, LITERARY CHARACTERS,
NAVAL AND MILITARY HEROES,

And others eminent in

CHURCH AND STATE;

AND SEVERAL NEARLY ALLIED TO THE

Existing Noble Families;

BY THE MOST EMINENT CONTEMPORARY ARTISTS

ALPHABETICALLY ARRANGED, WITH BIOGRAPHICAL AND DESCRIPTIVE PARTICULARS

In a good portrait we conceive a better opinion of the person, some, indeed, and other good qualities of the person than from seeing themselves, and yet without being able to say in what particular it is useful, for nature must be ever in view. Let a man read a character in my hand (I calculate) and certainly never was there a better portrait in that kind, he will find it improved by seeing a picture of the same person by Van Dyck.

AND A

Engravings in Wood, Carved Frames, &c.

and a fine Original Part of

HANDEL BY ROUBILLAC.

The whole of which are now offered for sale, at the Prices annexed.

By H. ROBY, of Great Newport Street, Long Acre.

LONDON: PRINTED BY A. COOPER, MIDDLE STREET, CLOTH LANE, 1834.



PRICES of the PORTRAITS in the accompanying CATALOGUE.

WITH A FEW ADDITIONAL REMARKS.

ENGRAVED

No.	£ s. d.	No.	£ s. d.
101	7 7 0	101	10 10 0
102	8 8 0	102	10 10 0
103	8 8 0	103	10 10 0
104	8 8 0	104	10 10 0
105	8 8 0	105	10 10 0
106	8 8 0	106	10 10 0
107	8 8 0	107	10 10 0
108	8 8 0	108	10 10 0
109	8 8 0	109	10 10 0
110	8 8 0	110	10 10 0
111	8 8 0	111	10 10 0
112	8 8 0	112	10 10 0

"A portrait is a sort of general history of the life of the person it represents, not only to him who is acquainted with it, but to many others, who, upon occasion of seeing it, are frequently told of what is most material concerning him, or his general character at least: the face and figure are also described, and as much of the character as appears by these, which oftentimes is here seen in a very great degree. These, therefore, many times answer the ends of historical pictures, and to relations or friends give a greater pleasure than any other can."

Jonathan Richardson's Works, page 179.

"Of many persons there are none but meanly engraved heads; but I can easily imagine that the meanest that is may preserve the likeness, which is the essence of a Portrait, and might serve to ascertain a picture."

Preface to Granger's Biographical History of England.

It being a difficult matter to judge of the value of a Picture by the printed description, the prices were at first omitted; but as it was thought it would be objectionable, and attended with extra trouble, they have been printed at the back of this page.

No.	£ s. d.	No.	£ s. d.
113	8 8 0	113	10 10 0
114	8 8 0	114	10 10 0
115	8 8 0	115	10 10 0
116	8 8 0	116	10 10 0
117	8 8 0	117	10 10 0
118	8 8 0	118	10 10 0
119	8 8 0	119	10 10 0
120	8 8 0	120	10 10 0
121	8 8 0	121	10 10 0
122	8 8 0	122	10 10 0
123	8 8 0	123	10 10 0
124	8 8 0	124	10 10 0
125	8 8 0	125	10 10 0
126	8 8 0	126	10 10 0
127	8 8 0	127	10 10 0
128	8 8 0	128	10 10 0
129	8 8 0	129	10 10 0
130	8 8 0	130	10 10 0
131	8 8 0	131	10 10 0
132	8 8 0	132	10 10 0
133	8 8 0	133	10 10 0
134	8 8 0	134	10 10 0
135	8 8 0	135	10 10 0
136	8 8 0	136	10 10 0
137	8 8 0	137	10 10 0
138	8 8 0	138	10 10 0
139	8 8 0	139	10 10 0
140	8 8 0	140	10 10 0
141	8 8 0	141	10 10 0
142	8 8 0	142	10 10 0
143	8 8 0	143	10 10 0
144	8 8 0	144	10 10 0
145	8 8 0	145	10 10 0
146	8 8 0	146	10 10 0
147	8 8 0	147	10 10 0
148	8 8 0	148	10 10 0
149	8 8 0	149	10 10 0
150	8 8 0	150	10 10 0
151	8 8 0	151	10 10 0
152	8 8 0	152	10 10 0
153	8 8 0	153	10 10 0
154	8 8 0	154	10 10 0
155	8 8 0	155	10 10 0
156	8 8 0	156	10 10 0
157	8 8 0	157	10 10 0
158	8 8 0	158	10 10 0
159	8 8 0	159	10 10 0
160	8 8 0	160	10 10 0



PRICES of the PORTRAITS in the accompanying CATALOGUE,

WITH A FEW ADDITIONAL REMARKS.

No.	£	s.	d.	No.	£	s.	d.	No.	£	s.	d.		
1	10	10	0	52	7	7	0	104	10	10	0		
2	5	5	0	53	8	8	0	105	10	10	0		
3	7	7	0	54	5	5	0	106	3	3	0		
4	30	0		55				107	15	15	0		
5	carved frame, newly gilt	10	10	0	17-8, name on the picture, from Mr. Bartleman's	7	7	0	108	in a gilt frame	6	6	0
6	ditto	10	10	0	56	26	5	0	109	ditto	8	8	0
7	}	26	10	0	57	7	7	0	110	ditto	6	6	0
8		42	0	0	58	12	0	0	111	ditto	8	8	0
9		5	5	0	59	-	-	-	112	ditto	6	6	0
10		5	5	0	60	5	5	0	113	style of Lely, carved frame	10	10	0
11		5	5	0	61	6	6	0	114		7	7	0
12		10	10	0	62	6	6	0	115	}	21	0	0
13	newly gilt carved fr.	84	0	0	most probably by Velasquez	75	0	0	116			10	10
14	French carved frame, newly gilt	7	7	0	63	10	10	0	117		14	14	0
15		1	1	0	64	6	6	0	118		5	5	0
16		2	2	0	65	5	5	0	119		8	8	0
17		5	5	0	66	6	6	0	120		10	10	0
18		15	15	0	67	4	4	0	121		4	4	0
19		4	4	0	68	2	2	0	122		15	15	0
20		10	10	0	69	26	5	0	123		5	5	0
21		14	14	0	70	2	2	0	124		12	12	0
22		10	10	0	71	8	8	0	125		24	0	0
23		21	0	0	72	21	0	0	126	carved & gilt frame	3	3	0
24		2	12	6	73	12	12	0	127		3	13	6
25		12	12	0	74	5	5	0	128		4	4	0
26		8	8	0	75	5	5	0	129		21	0	0
27	formerly in Mr. Bartleman's collection	15	15	0	76	2	2	0	130	}	10	10	0
28		6	6	0	77	4	4	0	131			8	8
29		31	10	0	78	15	15	0	132		7	7	0
30		20	0	0	79	7	7	0	133	in a gilt frame	8	8	0
31		20	0	0	80	5	5	0	134	ditto	7	7	0
32		2	12	6	81	4	4	0	135	ditto, carved, oak leaf pattern	5	5	0
33		18	18	0	82	15	15	0	136	ditto	3	3	0
34		8	8	0	83	10	10	0	137		6	6	0
35		6	6	0	84	31	10	0	138		8	8	0
36		6	6	0	85	4	4	0	139		8	8	0
37		12	12	0	86	5	5	0	140		21	0	0
38		16	16	0	87	5	5	0	141		10	10	0
39		4	4	0	88	5	5	0	142		21	0	0
40		45	0	0	89	12	12	0	143		1	11	6
41		47	10	0	90	10	10	0	144	in a gilt frame	7	7	0
42		21	0	0	91	4	4	0	145		5	5	0
43		2	12	6	92	6	6	0	146		3	3	0
44	in a gilt frame, from Mr. Bartleman's sale	10	10	0	93	31	10	0	147		7	7	0
45		2	12	6	94	12	12	0	148		5	5	0
46		2	2	0	95	6	6	0	149		7	7	0
47		5	5	0	96	5	5	0	150		5	5	0
48		14	14	0	97	12	12	0	151		3	13	6
49		7	7	0	98	4	4	0	152		6	6	0
50		7	7	0	99	21	0	0	153		5	5	0
51	in a splendid French carved oak frame	45	0	0	100	5	5	0	154		0	15	0
					101	10	10	0	155		36	15	0
					102	5	5	0	156		45	0	0
					103	4	4	0	157		12	12	0

III
AND
CATALOGUE
OF
ORIGINAL PORTRAITS,

Painted on Pannel, Canvas, &c.

I.

ABBOTT, GEORGE, ARCHBISHOP OF CANTERBURY.

Canvas, 50 inches by 40, in his episcopal habits, sitting in a chair, hand resting on a book; his arms, impaled with those of the see of Canterbury, in the corner. Carved and gilt frame.—See front.

This Prelate, born October 29, 1562, at Guildford, in Surry, was the fourth son of Morice Abbot, Clothworker: he received his first rudiments of education at the Free School of his native town; from thence, in 1578, he was sent to Baliol College, Oxford, where he soon got entered into Holy Orders, and became a preacher of considerable note. In 1597 he was chosen Master of University College; in 1599, made Dean of Winchester; and during the years 1600, 1603, and 1605, was elected Vice Chancellor of the University. In 1609 he was appointed Bishop of Lichfield and Coventry; 1610, translated to London; and on the death of Bancroft, Archbishop of Canterbury, he was, on April 9, 1611, placed in the Chair of that See. He died at Croydon, August 5, 1633, and was buried in the Chapel of Our Lady, in Trinity Chapel, Guildford, where there is a magnificent Monument to his memory.

II.

ALABASTER, WILLIAM, D.D. PREBEND OF ST. PAUL'S.

Canvas, 26 inches by 20, very finely painted by Cornelius Jansen, extremely like the scarce Portrait engraved by Payne, after the same master.

*** From the Collection of Dr. Wright, of Lichfield.

Received his education at Cambridge, and was one of the best Latin Poets of his age, and well skilled in the Greek and Oriental Languages. He was Author of "Roxana," a Latin Tragedy; but the most considerable of his works is his "Lexicon Pentaglotton," upon which he was employed many years. He died in the month of April, 1640.

*On sale by H. RODD, }
9, Great Newport-street. }*

B

III.

ANNE, QUEEN OF ENGLAND.

Canvas, 48 inches square, in her robes, holding her sceptre, the Order of the Garter, &c.: crown lying on a table. Style of Kneller, in a gilt frame.

IV.

ARUNDEL, THOMAS HOWARD EARL OF, AND SURRY,
EARL MARSHAL OF ENGLAND.

Canvas, 50 inches by 40, seated in a chair, in a fur gown, Order of the Garter, &c.: in the back-ground is a representation of a marble gallery, to which the Earl is seemingly directing the attention with his finger. Very finely painted by Michael Jansen Miereveldt: there is a print very similar, after the same master, engraved by Simon Pass, but it is extremely rare.—See front.

*** The description given of the Earl's person by Sir Edward Walker in every respect corresponds with the Picture.

V.

ASTON, SIR WILLOUGHBY, OF ASTON IN CHESHIRE, BART.

Canvas, 30 inches by 24, finely painted, in armour, flowing hair, his cravat tied with a red ribbon.

*** Lately purchased at Stockport, but originally from Crewe Hall, Cheshire.

Son of Sir Thomas Willoughby, of Aston, Bart. (who was slain, 1645, by a soldier, in attempting to escape from Stafford, where he had been carried prisoner by the Parliament's army), by his second wife, Anne, daughter and sole heiress of Sir Henry Willoughby, of Risley, in Derbyshire, Bart. Sir Willoughby lived at Aston in a sumptuous house which he had built a little distance from the old seat, and died December 2, 1702. He married Mary, daughter of John Offley, of Madeley Manor, in Cheshire, Esq., by whom he had eight sons and thirteen daughters: Mary, the first daughter, married to Sir John Crewe, of Utinton, in Cheshire, Knt.

VI.

BARGRAVE, ISAAC, D.D., DEAN OF CANTERBURY.

Canvas, 30 inches by 24, in the style of Cornelius Jansen; sitting in a red chair, and holding a seal with the arms of the Deanery of Canterbury. On the back of the picture is the following inscription:—"Dr. Isaac Bargrave, Dean

On sale by H. RODD, }
9, Great Newport-street. }

of Canterbury, youngest son of Thomas Bargrave, in Kent, Esq., intermarried with Elizabeth, daughter of John Dering, of Egerton, in Kent, Esq., by whom he had five sons and five daughters; dyed at Eastry Court, Anno Domini 1644: his Picture, painted on copper to his monument in the Dean's Chapel, in Canterbury. Mrs. Elizabeth Tucknell, the Dean's granddaughter, did at her death give this Picture to Mrs. Mary Garway, another of the Dean's granddaughters, Anno Domini 1730."—See front.

VII.

BATEMAN, WILLIAM, VISCOUNT, KNIGHT OF THE BATH.

On Canvas, 8 feet by 5, whole length, in his robes, hat and feathers on a table, a fine gallery picture, in the style of Hudson.—See front.

VIII.

BATEMAN, LADY ANNE SPENSER, VISCOUNTESS.

On Canvas, 8 feet by 5, whole length, in her robes, holding a coronet. A companion to the preceding picture.—See front.

Eldest daughter of Charles Earl of Sunderland, married to William Lord Viscount Bateman, of the kingdom of Ireland, and of Shobdon Court in Herefordshire, father by her Ladyship of John Lord Viscount Bateman, who was elected for Orford, in Suffolk, in 1746, and the year after, on a new Parliament being called, he was chosen for Woodstock, as also of that of May 31, 1754; and his Brother, the Hon. William Bateman, was Member for Gatton, in Surrey, May 31, 1754.

IX.

BEDFORD, WILLIAM RUSSELL, FIFTH EARL AND FIRST DUKE OF,

CANVAS, 8 FEET BY 5, WHOLE LENGTH, IN HIS ROBES AS KNIGHT OF THE GARTER, STANDING IN A ROOM, HAT AND FEATHERS ON A TABLE, BY HIM IS SITTING A FAVOURITE SPANIEL: PAINTED BY SIR GODFREY KNELLER; IN A GILT FRAME, A FINE GALLERY PICTURE.

*** The above picture has the painter's name on it, and represents the Duke at a later period than the print by Williams, after Lutterell.

When young, fought for King Charles the First. After being fined by the Parliament, he retired until the Restoration, when he was employed; but, though much respected, he could not prevent the sad fate of his son, the truly unfortunate Lord Russell: old, and a prey to grief, he saw the Restoration reverse his son's attainder, and himself

*On sale by H. RODD, }
9, Great Newport-street. }*

rewarded with a ducal coronet. He died 1700, aged 84. He lived under the government of James the First, and the succeeding ones, monarchical, republican, and protectorial. There was something uncommonly pathetic in his reply to James the Second, who, addressing him in his misfortunes, said, "*My Lord, you are a good man, and may do me some service:*" "*Sire, I am old; I had a son who might have served your Majesty, had he lived.*" The preamble of his patent, set forth by William and Mary, recites, "that it was not the least, that he was the father to the Lord Russell, the ornament of his age, whose great merits 'twas not enough to transmit by history to posterity; but they were willing to record them in their royal patent, to remain in the family as a monument consecrated to his consummate virtue; whose name could never be forgot, so long as men preserved their esteem for sanctity of manners, greatness of mind, and a love to their country constant even to death. Therefore, to solace his excellent father for so great a loss, to celebrate the memory of so noble a son, and to excite his worthy grandson, the heir of such mighty hopes, more cheerfully to emulate and follow the example of his illustrious father, they intailed this high dignity upon the Earl and his posterity."

X.

BLAKE, ROBERT, ADMIRAL.

Canvas, 30 by 24 inches, in armour, band, &c.

Born August 15, 1599, at Bridgewater, in Somersetshire, where he was educated at the Grammar School. Having served some years in the Parliament army, he was, in February 1648-9, appointed to command the fleet in conjunction with Colonels Deane and Popham. During nine years actual service in the navy, he performed exploits, that, for the skill with which they were conducted, and the success which attended them, were never surpassed till the time of Howe, Duncan, and Nelson. He died as the fleet was entering Plymouth, the 17th of August, 1657, aged 58. His body was conveyed to Westminster Abbey, and interred with great funeral pomp in Henry the Seventh's Chapel, but removed from thence in 1661, and re-interred in St. Margaret's Churchyard.

XI.

BOUCHAGE, HENRI COMTE DU, OF THE COURT OF
HENRY THE FOURTH OF FRANCE.

Pannel, 14 inches by 10, painted equal to miniature, in a gilt frame.

*On sale by H. RODD, }
9, Great Newport-street. }*

XII.

BUCHANAN, GEORGE, POET AND HISTORIAN, OF SCOTLAND.

A fine original Painting, on Pannel, 16½ inches by 13, in a black dress, and corresponding with the engraved Portraits of him.

Born near Kellerne, in the shire of Lenox, in Scotland, 1506. He employed the last twelve or thirteen years of his life in writing the history of his own country, in which he happily united the force and brevity of Sallust with the perspicuity and elegance of Livy. He died at Edinburgh, Feb. 28, 1582. Sir James Melvil, who was of the opposite party to him, and therefore cannot be supposed to be partial in his favour, tells us that Buchanan "was a stoic philosopher who looked not far before him; a man of notable endowments for his learning and knowledge in Latin poetry, much honoured in other countries, pleasant in conversation; rehearsing at all occasions moralities, short and instructive, whereof he had abundance, inventing where wanted." Dr. Burnet, in his "History of the Reformation," says of him, "he is justly reckoned the greatest and best of our modern writers."

XIII.

**BUCKINGHAM, GEORGE VILLIERS, DUKE OF, FAVOURITE
OF KINGS JAMES I AND CHARLES I, ASSASSINATED
BY FELTON, 1628.**

CANVAS, 7 FEET BY 4 FEET 4 INCHES, WHOLE LENGTH, SUPERBLY HABITED IN A BLACK DRESS, SLASH SLEEVES AND TRUNK BREECHES, RICHLY EMBROIDERED WITH GOLD, YELLOW SILK STOCKINGS, A BLACK CLOAK HANGING ON HIS ARM, HAND RESTING ON A SWORD, STANDING IN A ROOM BEFORE A CURTAIN, HIS HAT ON A TABLE COVERED WITH RED VELVET.

*** A very splendid gallery picture, and finely painted in the style of Miereveldt.

XIV.

**BURLEIGH, WILLIAM CECIL LORD, LORD HIGH TREASURER,
SECRETARY OF STATE AND COUNSELLOR TO
QUEEN ELIZABETH.**

On Pannel, 22 inches by 17, in his robes, with the staff of Lord Treasurer; in the manner of Zuccherò.

*** Engraved in Birch's Lives, by Houbraken.

An eminent English statesman; was born at Bourn, in Lincolnshire, 1521; held the office of Lord High Treasurer of England twenty-seven years; and died 1598.

*On sale by H. RODD, }
9, Great Newport-street. }*

C

XV.

**BURROW, SIR JAMES, MASTER OF THE CROWN OFFICE,
DIED 1782.**

Drawing in India ink, 18 inches by 13, by Basire, from which he engraved the print : in a black frame and glass. On the back is written, "The portrait of my worthy friend Sir James Burrow, Knt., which met with his approbation, and paid James Basire three hundred guineas for engraving the same."

XVI.

CAERNARVON, ROBERT DORMER, EARL OF.

Canvas, 30 inches by 24, a sketch from the portrait in the picture of the "Pembroke Family," by Vandyck, at Wilton.

Baron Dormer, of Wing, in Buckingham, resided at Ascot House, where his ancestor, Sir Robert Dormer, entertained the Princess (afterwards Queen) Elizabeth 1554, when on the road to London as prisoner, soon after her sister's accession to the throne. In 1628 he was created Viscount Ascot and Earl of Caernarvon. Lost his life while fighting for his sovereign at the battle of Newbury, 1643, with the Earl of Sunderland and the accomplished Lord Falkland.

XVII.

CAMPDEN, ELIZABETH BERTIE, COUNTESS OF.

Canvas, 30 inches by 24. On the back of the picture is written, "The Rt. Hon. the Lady Campden, born May the 1st, 1628; obijt 13 July, 1683, ætat suæ 55; don by Hales."

Daughter of Montague Bertie, Earl of Lindsey, Lord High Chamberlain of England, by his first wife Martha, daughter of Sir William Cockain, of Rushton, in the county of Northampton, Knt., widow of John Ramsay, Earl of Holderness; married, and was fourth wife to Baptist Noel, Viscount Campden and Earl of Gainsborough, by whom she had nine children: 1. Lindsey Noel, who died in his infancy; 2. Catherine, wife of John Earl of Rutland; 3. Baptiste Noel, Esq.; 4. John Noel, Esq.; 5. Bridget Noel; 6. A son whose early birth prevented his baptism; 7. James Noel, Esq., who died in the 18th year of his age; 8. Martha Penelope; 9. A son still born.

*On sale by H. RODD, }
9, Great Newport-street. }*

XVIII.

CARDIGAN, THOMAS BRUDINEL, FIRST EARL OF.

Canvas, 50 inches by 40, in a black dress, holding his gloves in his right hand, his left leaning on a table; a finely painted portrait, from Weston house, the seat of the Sheldon family.— See front.

Thomas, eldest son of Robert Brudinel, was, by King James, 29th of June 1611, created a Baronet; on the 9th of April, 1612, he received the honour of knighthood at Whitehall; and by letters patent, bearing date 26th April, 3d of Charles the First, advanced to the dignity of a Baron of this kingdom, by the title of Lord Brudinel, of Stanton-Wivell, in Leicestershire. In the time of the civil wars he sufficiently manifested his loyalty, by raising soldiers and contributing whatever he could to the King in his garrisons of Newark, Lincoln, and Hereford, for which, on the prevailing of his Majesty's adversaries, he was imprisoned in the Tower, where, during his confinement, he spent his leisure hours in making abstracts from the records, great part of which are in the library at Dean, in the county of Northampton. In consideration to his great services, King Charles II created him Earl of Cardigan, April 20, 1660. He married Mary, daughter of Sir Thomas Tresham, of Rushden St. Peter, Northamptonshire, by whom he had two sons, Robert, who succeeded him, and Edmund, who died unmarried June 15, 1652, and one daughter, Lady Mary, who married John Constable, of Burton Constable, Viscount Dunbar. The Earl died September 16, 1663, at above fourscore years of age, and was buried at Dean with his ancestors.

XIX.

CECIL, HONOURABLE WILLIAM, SON OF THE EARL OF EXETER.

Canvas, 30 inches by 24, in a red cloak, point lace bands, &c. On the back of the picture is written, in an old hand, "Honourable W. Cecil, pupil of Dr. Jenkins, Master of St. John's, Cambridge."

Third son of John Earl of Exeter by Elizabeth, eldest daughter and co-heir of Sir John Brownlow, of Belton, in the county of Lincoln, Bart., educated under Dr. Jenkins, at St. John's College, Cambridge, where most of his predecessors had studied; gave great hopes of keeping up the lustre of his family, but died too early, to the concern of all who had the happiness of his acquaintance.

*On sale by H. RODD, }
9, Great Newport-street. }*

XX.

CHARLES THE FIRST, KING OF ENGLAND.

On Pannel, 15 inches by 11, finely painted, after Van Dyke; a fine cabinet portrait, in a gilt frame.

XXI.

CHARLES THE SECOND, KING OF ENGLAND.

Canvas, 48 inches by 40, in his robes, Order of the Garter, &c.; his right hand leaning on a table, on which is placed his hat and feathers, his left holding up his robes; finely painted in the style of Ryley.

*** Originally in the possession of Sir William Temple, at Farnham, in Surrey.*

XXII.

CHARLES THE SECOND, KING OF ENGLAND.

Canvas, 48 inches by 40, in armour, his right hand resting on a helmet, his left holding a baton, &c.; finely painted in the style of Sir P. Lely.

XXIII.

CHESTERFIELD, PHILIP STANHOPE, EARL OF.

Canvas, 48 inches by 40, in his robes; very finely painted by Lely, engraved by Worlidge.

Succeeded to the title in 1656; married to his first wife, Anne, eldest daughter to Algernon Piercy, Earl of Northumberland, by whom he had a son named Algernon, who died in his infancy; and by his second wife, Elizabeth, daughter of James Butler, Duke of Ormond, he had a daughter of her name, who was married to the Earl of Strathmore, in Scotland; but marrying a third wife, who was Elizabeth, eldest daughter of Charles Dormer, Earl of Caernarvon, by her he had two sons and two daughters, and died on the 28th of January, 1713, aged 80 years and 2 months.

XXIV.

CIBBER, SUSANNAH, ACTRESS, WIFE OF THEOPHILUS CIBBER.

Small, on canvas, whole length, in the manner of Hayman.

*On sale by H. RODD, }
9, Great Newport-street. }*

XXV.

CLARENDON, EDWARD HYDE, EARL OF, LORD CHANCELLOR
OF ENGLAND.

Canvas, 30 inches by 24, in the dress of Lord Chancellor, face and hands, &c.; by Sir Peter Lely, the same as engraved in "Lodge's Illustrious Heads;" in a carved and gilt frame.—See front.

Born at Dinton, in Wiltshire, 1608. His name is immortalized by his "History of the Rebellion" in the time of Charles the First. He was afterwards impeached of treason, and withdrew to France, where he died 1674.

XXVI.

CLARKE, SAMUEL, D.D., RECTOR OF ST. JAMES, WESTMINSTER,
BORN AT NORWICH, 1675, DIED MAY 17, 1729.

Canvas, 50 inches by 40, in a black and gilt frame, in his clerical habit, hand resting on a book. On the face of the picture is written "Samuel Clarke, D.D., Rector of St. James, Westminster, painted by Mrs. Hoadly."—See front.

XXVII.

CORELLI, ARCANGELO, MUSICIAN.

*Canvas, 38 inches by 28, in a cloak and band, holding music. On the back of the picture is the following inscription:—"This portrait was painted by H. Howard, at Rome, about 1698 or 9: there is a very fine mezzotinto print done from it by Smith. This picture, which was his *chef d'œuvre* (and his show picture as long as he continued to be a *professor*), was bought by the great Duke of Argyle at a large price,—the sum I have never heard: it afterwards came successively into the hands of Archibald and John, Dukes of Argyle: I bought it at a sale of the latter's pictures, at Langford, 1769. I have seen three other originals of Corelli, or the copies,*

*On sale by H. RODD, }
9, Great Newport-street. }*

D

*On sale by H. RODD,
9, Great Newport-street.*

so fine that I have not been able to discover the difference, all painted by Mr. Howard: one which he kept in his own possession, many years afterwards came into my hands, and is now in the concert room in Tottenham Street; one which he did for Lord Edgecumbe, who was a scholar of Corelli at the same time with him, is now at Mount Edgecumbe; and one which he sent to his eldest brother, Ralph, then Bishop of , in Ireland, whose estate he inherited: it is now in the hands of his grandson, the Rt. Hon. Ralph Howard, Ld. Baron of Clangnora, of Ireland. I have also good reason to believe that Howard gave or sold one to Corelli himself, from which the bust on his monument in the Pantheon was done, as it corresponds exactly with Smith's print."—R. S.

XXVIII.

CORKE AND ORRERY, JOHN BOYLE, EARL OF.

Canvas, 50 inches by 40, in his robes, hand resting on a coronet; in the style of Kneller.

See front.

John, Earl of Corke and Orrery, the only son and heir of Charles, fourth Earl of Orrery, by Lady Elizabeth Cecil, daughter of John, Earl of Exeter, was born January 2, 1706-7. Elijah Fenton, the author of "Mariamne," was his tutor until his entering into Westminster school, from whence he was admitted, as a nobleman, at Christ Church, Oxford, to which his father had been an honour and ornament, particularly by his edition of the Epistles of Phalaris, which occasioned his celebrated controversy with Dr. Richard Bently. His filial piety was admirably exemplified on the Earl of Orrery's being committed to the Tower in September 1722, by his earnest entreaty, but in vain, to be immured with his father, who was imprisoned on suspicion of being concerned in what was called "Layer's Plot," and for which Layer suffered death. He married, soon after coming to age, on May 9th, 1728, Lady Henrietta Hamilton, youngest daughter of George, Earl of Orkney, which marriage subsequently gave rise to much family dissension. By the death of Richard, Earl of Burlington and Corke, without male issue, he succeeded to that nobleman's Irish titles. In December 1754, he began a tour to Italy, and resided nearly a year at Florence, where he collected materials for the history of Tuscany, which he intended to write in a series of letters, twelve of which he only lived to finish. He returned to England in 1755, where, having lost his second Lady, Margaret Hamilton, and his eldest son, Charles, Earl of Dungarvon, he died, 1762, at Marston House, Somersetshire.

*On sale by H. RODD, }
9, Great Newport-street. }*

XXIX.

CRISPE, SIR NICHOLAS, LOYALIST.

CANVAS, 54 INCHES BY 44, STANDING UNDER A TENT ON WHICH ARE THE ARMS OF CRISPE AND THE CITY OF LONDON; HOLDING IN HIS RIGHT HAND A HALBERD RICHLY ORNAMENTED, ON WHICH ALSO ARE THE ARMS OF CRISPE; HIS LEFT HAND RESTING ON A TABLE COVERED WITH RED VELVET, HOLDING HIS HAT; IN THE BACK GROUND IS AN ARMY OF SOLDIERS, TENTS, &c.: HE IS MAGNIFICENTLY ATTIRED IN A RED DRESS, WITH A RICH EMBROIDERED SCARF ROUND HIS WAIST, &c.

This loyal subject was one of the farmers of the customs, and a rich merchant, trading principally to the coast of Guinea. As a proof of his zeal to the King's cause, he raised, at his own expense, a regiment, for which service his Majesty created him a Baronet the year before his death. "One while (says Lloyd) you would meet him with thousands of gold; another, while on his way to Oxford, riding in a pair of panniers; at other times he was a porter, carrying on his Majesties interest in London: he was a fisherman in one place, and a merchant in another; all the succours the King had from beyond the seas came through his hands, and most of the relief he had at home was managed by his conveyance."

Sir Nicholas Crispe is said to have been the first inventor of bricks as now practised in England, of which materials he built a magnificent mansion by the side of the Thames, at Hammersmith (now called Brandenburg House), which is said to have cost upwards of £23,000: it was plundered during the civil war. He died February 26, 1661; and lies buried under a monument in the chapel at Hammersmith, which he gave the bricks to build: his heart is inclosed in an urn, on a pedestal of black marble.

XXX.

CROMWELL, ROBERT, FATHER OF THE PROTECTOR.

Canvas, 36 inches by 28, in a black cap, cloak, and band; in the manner of Dobson, in a carved and gilt frame.—See front.

*. The above picture nearly resembles the one at Hinchinbroke, which is engraved by Stow, but, from the introduction of the hands, and the execution of the drapery, is certainly preferable.

Originally from Crew Hall, Cheshire.

On sale by H. RODD, }
9, Great Newport-street. }

XXXI.

CROMWELL, OLIVER, LORD PROTECTOR.

CANVAS, 30 INCHES BY 24, IN ARMOUR, PAINTED IN A VERY BOLD AND SPIRITED MANNER, AND SAID TO BE BY SIR P. LELY; *in a carved and gilt frame.*

** Formerly in the possession of Charles Warren, Esq. R.A., who engraved it.

XXXII.

CROSBY, CAPTAIN, GOVERNOR OF KINSALE, IN IRELAND.

Canvas, 30 inches by 24, in armour, holding a baton.

XXXIII.

DONE, OF UTKINTON, CHESHIRE, RANGER OF
DELAMERE FOREST.

Canvas, oblong, 37 inches by 62; an elderly female sitting in a chair receiving flowers from a young lady; on the other side is a young man (Done of Utkinton) holding in his hand a white staff, a dog by his side: on a label in the corner is the following motto—"Doni Nomen, Boni, Omen." Painted in the manner of Dobson.—See front.

** The above picture came originally from Crew Hall, Cheshire, and has the Number (33) on it in which it stood in the Catalogue.

XXXIV.

DORCHESTER, CATHERINE SEDLEY, COUNTESS OF.

Canvas, 50 inches by 40, in a crimson dress, leaning on a pedestal.

** A print very similar engraved by Smith, after Kneller.

Catherine, daughter of the above, was first married to James, Earl of Anglesea, by whom he had an only daughter of her name, born January 7, 1700, who, in 1718, was married to William Phipps, Esq. son of Sir Constantine Phipps, Knt., and secondly to John Sheffield, Duke of Buckingham and Normanby.

*On sale by H. RODD, }
9, Great Newport-street. }*

XXXV.

DYER, SIR JAMES, KNT. CHIEF JUSTICE OF THE
KING'S BENCH.

Pannel, 21 inches by 17, in his robes, collar of S.S. ; on the frame are the following inscriptions :—“ Vera Effigies Jacobi Dier Militis Capitalis Justiciarii de coi Banco; obiit Ao. Dni 1581, & ætatis suæ 72.”

“ Judicis effigiem justi vultusq. verendi

“ Conspici qui legis luxq. decuxq. fuit,

“ Quem dives oculis, lachimis quem paupa obortis

“ Justiciæ a norma flectere non potuit J. Dyer.”

in the corner are the arms, differing from those engraved on the print by Drapentier, which in every other respect corresponds with the picture.

An eminent English lawyer, and Chief Justice of the Common Pleas in the reign of Queen Elizabeth, born at Roundhill, in Somersetshire, 1511. He was the author of a large volume of Reports, which were published about twenty years after his decease, and have been highly esteemed for their succinctness and solidity: he died in 1581, leaving behind him other writings relative to his profession.

XXXVI.

EDGECOMBE, SIR RICHARD, OF MOUNT EDGECOMBE, IN
DEVONSHIRE, BART.

Canvas, 30 inches by 24, in armour, red sash, &c., arms of Edgcombe, impaled with those of Montague, in the corner : finely painted in the style of Dobson.

Born at Mount Edgcombe, 1639; was made one of the Knights of the Bath at the Coronation of King Charles the Second, and attended that grand solemnity in his purple robes. He was chosen M.P. for Launceston the first of King Charles the Second; married Lady Anne Mountague, the second surviving daughter of the brave Earl of Sandwich, by whom he had two sons, whereof the second was made Lord Edgcombe, and five daughters. Sir Richard died April 3, 1688, and was buried at Maker; his lady survived him until March 1729, when she died and was buried beside him: she was secondly married to Christopher Montague, elder brother to Charles Earl of Halifax.

*On sale by H. RODD, }
9, Great Newport-street. }*

E

XXXVII.

EDWARD THE SIXTH, KING OF ENGLAND.

Pannel, 32 inches by 24, in a black dress, ornamented with yellow fringe, holding his gloves in his right hand, his left resting on his sword, black hat with ornaments: school of Holbein.

XXXVIII.

EDWARD THE SIXTH, KING OF ENGLAND.

Pannel, 34½ inches by 27, in black dress and hat with yellow buttons and ornaments, his right hand holding a glove, his left resting on his girdle, green background: by Hans Holbein.

XXXIX.

EDWARDS, OF ARLSEY, BEDS.

Pannel, 30 inches by 24, in an official dress, holding his gloves in his right hand, in the corner are his arms; viz. party per bend sinister, sable and ermine, a lion rampant or; crest, an esquire's helmet, plumed argent and gules: ætatis suæ 56, 1609.

XL.

EGERTON, ELIZABETH, VERE, & MARY, GRANDAUGHTERS OF LORD CHANCELLOR EGERTON.

CANVAS, 54 INCHES BY 54, THREE WHOLE LENGTH FIGURES AT THE AGES OF 3, 5, AND 6, RICHLY HABITED IN GREEN, AND ORNAMENTED BY JEWELS, HANDS JOINED AND EACH HOLDING A FEATHER FAN: AN UNDOUBTED PICTURE, BY MARC GARRARDS, AND IN A MOST SINGULAR CARVED FRAME OF THE TIME; THE WHOLE IN VERY EXCELLENT PRESERVATION, PAINTED ABOUT 1603.

Elizabeth, Vere, and Mary, daughters of Thomas Egerton (eldest son of the Lord Chancellor) by Elizabeth his wife, daughter of Thomas Venables, Baron of Kinderton, in the county of Cheshire, Esq. Elizabeth married Thomas Dutton, of Dutton, in Cheshire; Vere, William Booth, son and heir of Sir George Booth, of Dunham, in the said county, Knight and Baronet; and Mary, Sir John Leigh, of Stonely, in the county of Warwick, Bart.

*On sale by H. RODD, }
9, Great Newport-street. }*

XLI.

ESSEX, ROBERT DEVEREUX, EARL OF, FAVOURITE OF
QUEEN ELIZABETH.—BEHEADED 1601.

PANNEL, 44½ INCHES BY 35, MOST SINGULARLY HABITED IN A SUIT OF BLACK ARMOUR, OVER WHICH IS A SURTOUT OR TILTING DRESS, RICHLY ORNAMENTED BY WHITE BEADS, HIS HAND RESTING UPON A BATON, A SWORD BY HIS LEFT SIDE AND A DAGGER OR SMALL SWORD ON HIS RIGHT; A LABEL, EVIDENTLY AT THE TIME THE PICTURE WAS PAINTED, IS INSCRIBED "ROBERT DEVEREUX, EARLE OF ESSEX, 1590."

*** The date on the above picture shows him to have been much younger than he has ever been engraved, and consequently makes it a most desirable picture: probably painted by Zucchero.

Son of Walter Devereux, Earl of Essex, and born 1567. He came young to court, and soon gained a considerable influence over the Queen, though his high spirit often betrayed him into petulant behaviour even to her; and, on the disgrace he fell into by the suggestions of his enemies about the Queen, after his unsuccessful expedition to Ireland, his rash temper prompted him to an ill-concerted kind of insurrection at London, for which he was beheaded in 1601. He was learned himself, and a generous patron of learned men.

XLII.

ESSEX, ROBERT DEVEREUX, EARL OF, GENERAL OF THE
PARLIAMENT'S ARMY, DIED 1646.

CANVAS, 30 INCHES BY 24, IN A YELLOW DRESS, SLASH SLEEVES, HOLDING A BATON, ARM RESTING ON A CHAIR: VERY FINELY PAINTED BY DOBSON.

*** From the collection of Sir M. M. Sykes, Bart. of Sledmere, in the county of York. There is a very rare print which corresponds with the picture, engraved by Faithorne.

Son of the preceding; was General of the Parliament's army against Charles I. He surrendered his commission of General in obedience to the self-denying ordinance in 1645, and died in 1646.

XLIII.

FISHER, JOHN, BISHOP OF ROCHESTER.

Pannel, 10 inches by 8, in a carved gilt frame, a copy of Holbein, in the style of

Richardson, engraved in Birch's Lives.

On sale by H. RODD, }
9, Great Newport-street. }



John Fisher, Bishop of Rochester, and martyr to popery, born at Beverly, Yorkshire, 1459, was beheaded for denying the King's supremacy, 1535. During his confinement the poor old bishop was hardly used, and scarcely allowed necessaries. He was confined above a year in the Tower, and might have continued there till released by a natural death, if an unseasonable honour paid him by Pope Paul the Third had not hastened his destruction: this was by the creating him, in May 1535, a Cardinal, by the title of Cardinal Priest of St. Vitalis. When the King heard of it, he said, in a great passion, "Well, let the Pope send him a hat when he will, Mother of God, he shall wear it on his shoulders, then; for I will leave him never a head to set it on." Erasmus represents him as a man of integrity, deep learning, sweetness of temper, and greatness of soul.

XLIV.

GEMINIANI, FRANCESCO, MUSICIAN, DIED 1762, AGED 96.

Canvas, 36 inches by 28, half length, standing before a table on which is an inkstand and music, his hand resting on a book lettered "Guida Harmonica."

A fine performer on the violin, and composer for that instrument, born at Lucca, in Italy, 1680; died 1762.

XLV.

GEORGE THE SECOND, KING OF ENGLAND.

Metal, 7 inches by 6, profile, in a crimson dress, blue sash, &c. in a gilt frame, very highly finished.

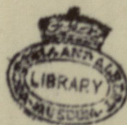
XLVI.

GIBBON, EDWARD, HISTORIAN.

Canvas, 30 inches by 24, probably by Romney.

Born at Putney, 1737; elected Member of Parliament for Liskeard, 1774, which he vacated 1780, in the course of which period he was some time Lord of the Trade. His celebrated "History of the Decline and Fall of the Roman Empire" will probably last as long as the language in which it is written: it abounds with proofs of unexampled learning, of a mind penetrating and sagacious, and of talents for ridicule agreeable and piercing.

*On sale by H. RIDD, }
9, Great Newport-street. }*



XLVII.

GIBSON, COLONEL (temp. Car. II).

Canvas, 30 inches by 24, in armour, holding a carbine, battle in the background ; finely painted in the style of Walker. On the back is written, "Colonel Gibson, who married my Aunt Necton."

*** Probably of the same family as Gibson Bishop of London, to whom it bears a strong resemblance.

XLVIII.

GLOUCESTER, HENRY DUKE OF, SON OF KING CHARLES THE FIRST.

CANVAS, 50 INCHES BY 40, IN ARMOUR, HOLDING A BATON, A TENT IN THE BACKGROUND, ON WHICH ARE THE ARMS OF ENGLAND WITH A LABEL OF 3 POINTS ERMINE, FINELY PAINTED.

*** There is a fine print by Van Dalen, after Luyeterhuys, which corresponds with the above picture, except in the background.

XLIX.

GOW, NEIL, MUSICIAN.

Canvas, 50 inches by 40, in plaid, sitting, playing the violin ; in the manner of Raeburn.

L.

GRANBY, JOHN MANNERS, MARQUIS OF.

Canvas, 60 inches by 50, on horseback, in his military dress, regiment of horse soldiers in the background.

Eldest son of John, third Duke of Rutland, educated at Eton School and Trinity College, Cambridge ; in 1750 he married Lady Frances Seymour, eldest daughter of Charles Duke of Somerset, M.P. for Grantham in three successive Parliaments ; died at Belvoir Castle, Oct. 11, 1770.

On sale by H. RODD, }
9, Great Newport-street. }

F

On sale by H. RODD, }
9, Great Newport-street. }

LI.

GRANDISON, WILLIAM VILLIERS, VISCOUNT.

CANVAS, 6 FEET BY 4 FEET 8 INCHES, WHOLE LENGTH, IN A CAVALIER'S DRESS, STANDING AGAINST A BANK, HAT AND FEATHERS IN HIS HAND, ARMOUR, &c. LAYING BY HIM: A SPLENDID GALLERY PICTURE, IN THE STYLE OF VANDYCK.

** The above picture nearly corresponds with the print engraved in "Lodge's Illustrious Heads."

The eldest son of Sir Edward Villiers, by Barbara, daughter of Sir John St. John, and neice to Sir Oliver St. John, whom he succeeded in the title of Visc. Grandison, 1630. In 1640 he was Colonel of a regiment raised against the Scots; in 1641 he commanded a troop of horse quartered in the county of Armagh, in Ireland, which being surprised and almost cut to pieces by the Irish insurgents on their first rising, who possessed themselves of their arms, he came and served his Sovereign in England. But in 1642, by the miscarriage of orders, he was exposed, at too great a distance from the army, with his single regiment of 300 horse and another of 200 dragoons, to the unequal number of 5000 horse and dragoons; and, after a retreat to Winchester, was taken with all his party. No blame on this occasion attached to the commander; and the misfortune was lessened by his making his escape, with some of his principal officers, to the King at Oxford. On July 26th, 1643, he commanded at the siege of Bristol, where he led on a division with great resolution; but, being beaten off and wounded, he was carried to Oxford, where he died, at the age of thirty, and was buried in the Cathedral of Christ Church, under a stately monument, erected by his only daughter, Barbara, Duchess of Cleaveland. Clarendon says, "He was a pattern of virtue for a camp or court, except in the instance of duelling; his fault was, that he was inclined to be too prodigal of his person, upon other occasions, when he was at the head of his regiment."

LII.

HADDINGTON, THOMAS HAMILTON, EARL OF.

Pannel, 15 inches by 12; a companion to James Marquis of Hamilton.—See front.

No. LIV.

*On sale by H. RODD, }
9, Great Newport-street. }*

LIII.

HAMILTON, JAMES, MARQUIS AND DUKE OF.

Canvas, 30 inches by 24, in a rich dress, finely painted, from the collection of the late John Arden, Esq. of Stockport, Cheshire, but originally from Crewe Hall. On it is written "Duke Hamilton," and the number (74) in which it stood in the catalogue of the pictures at Crewe Hall.

The Duke of Hamilton, who was at the head of the moderate presbyterians in Scotland, was much in the favour and confidence of Charles I. He was accused by his enemies with a design upon the King's life; but Charles gave so little credit to it, that he made no scruple of lying afterwards in the same bedchamber with him, without using any precaution for his safety. He was so dilatory in his military proceedings, that he was strongly suspected of treachery to that prince in whose cause he afterwards lost his life. In 1648 he invaded England with a numerous army, which was presently defeated by Cromwell and Lambert, the latter of whom took him prisoner. He was beheaded the 9th of March, 1648-9.

LIV.

HAMILTON, JAMES, MARQUIS AND DUKE OF, DIED 1648-9.

Pannel, 15 inches by 12, in a black dress, slash sleeves and red band, finely painted, the head nearly similar to the one engraved in "Lodge's Illustrious Personages." A companion to No. LII.

LV.

HANDEL, GEORGE FREDERICK, MUSICIAN.

Canvas, 8 inches by 7, similar to the one engraved by Houbraken.

LVI.

HEATH, NICHOLAS, BISHOP OF ROCHESTER, 1540;
 WORCESTER, 1551; ARCHBISHOP OF YORK, 1555;
 PRESIDENT OF WALES; AND LORD
 CHANCELLOR OF ENGLAND.

PANNEL, 24 INCHES BY 18, SITTING IN A BLUE VELVET CHAIR, IN HIS HAT AND CANONICALS, HIS HANDS CLASPED; A VERY FINELY PAINTED PORTRAIT, IN THE STYLE OF LUCAS DE HEERE.

*On sale by H. RODD, }
 9, Great Newport-street. }*

Anthony a Wood, speaking of Heath, says, "The picture, drawn to the life, of the said Archbishop, I have many times seen, which shews him to have been of a proper person, black haired, pale-faced, thin and macerated, somewhat like the picture of Fisher, Bp. of Rochester, but his nose not quite so long. I say, this picture I have often beheld, among many other choice pictures, hanging in the large gallery belonging to Weston House, near Lay Compton, Warwickshire, now in the possession of my worthy acquaintancè Ralph Sheldon, Esq., whose ancestor of both his names, of Beoly, in Worcestershire (who died 21 Dec. 1546), married Phillipa, daughter and coheir of Baldwin Heath (by his wife Agnes, eldest daughter and coheir of John Grove, of Ford Hall, in Wotton, in Warwickshire), son of Thomas Heath, of Copley, in the parish of Tamworth, which Thomas is supposed by them of the Sheldonian family (who quarters with their arms those of Grove and Heath) to be great grandfather to the Archbishop. This hath been several times told me by my never to be forgotten friend and generous acquaintancè Ralph Sheldon, of Beoly and Weston, Esq. (who deceased 1684), a person always very curious and industrious in genealogies."

*** The above picture came from the house where Wood had many times seen it; and it is presumed that there is not any other portrait of him in existence.

LVII.

HENRY THE FOURTH, KING OF FRANCE.

Canvas, 26 inches by 21, in a black dress, blue riband, Ordre de St. Esprit, &c., very finely painted.

LVIII.

HENRY THE SEVENTH, KING OF ENGLAND, AND HIS QUEEN, ELIZABETH OF YORK.

TWO HIGHLY FINISHED MINIATURES, IN WATER COLOURS, IN THE STYLE OF HOLBEIN, IN OR-MOLU FRAMES.

*** The above desirable articles were formerly in the collection of the late Earl Beauchamp.

On sale by H. RODD, }
9, Great Newport-street. }

LIX.

HENRY THE EIGHTH, KING OF ENGLAND.

PANNEL, 33 INCHES BY 26, IN A SILVER AND GOLD DRESS, A WHITE FUR TIPPET OVER HIS SHOULDERS, CAP AND FEATHER, HIS RIGHT HAND HOLDING A GLOVE, RESTING ON A GREEN TABLE, BLUE BACKGROUND; BY HANS HOLBEIN.

—See *front*.

LX.

HOOPER, GEORGE, BISHOP OF BATH AND WELLS.

Canvas, 50 inches by 40, seated in a chair, lawn sleeves, &c.; by Hill.

** There is an engraving from this portrait, in mezzotinto, by George White.

A native of the county of Worcester, educated at Christ Church College, Oxford; after which he became Chaplain to Dr. Morley, Bishop of Winchester, and then to Archbishop Sheldon: this procured him the rectory of Lambeth in 1675, and, in 1677, the place of Chanter in Exeter Cathedral. He was also Rector of Woodhay, Hants. Queen Ann promoted him to the see of St. Asaph in 1703; and in the following year translated him to that of Bath and Wells, where he remained till his death, constantly refusing the offers of removal to London or York. This worthy prelate died Sept. 6, 1727, at the advanced age of 90.

LXI.

HOUGH, JOHN, BISHOP OF WORCESTER.

Canvas, 50 inches by 40, seated in a chair covered with blue velvet, his arms impaled with those of Worcester in the corner of the picture, aged 84, 1734, and two Latin lines.

Son of John Hough, a citizen of London, by Margaret his wife, daughter of John Birche, of Leacroft, Staffordshire, Esq., born April 12, 1651. This prelate is well remembered, from his having been ejected from Magdalen College, of which he was President, by James the Second. The calm and intrepid spirit with which he maintained his own rights and those of the college, gained him the Bishopric of Oxford, which he held for a time with his Presidentship. In 1699 he was translated to Lichfield and Coventry. George the First removed him in 1717 to Worcester, where he died May 4, 1743, aged 93. His Lordship married Lettice, daughter of Thomas Fisher, of Walsall, relict of Sir Charles Lee, of Billesley, in Warwickshire.

On sale by H. RODD, }
9, Great Newport-street. }

G

LXII.

JAMES, THE FIRST KING OF ENGLAND, AND SIXTH
OF SCOTLAND.

CANVAS, 8 FEET BY 5½ FEET, MOUNTED ON A MOST BEAUTIFUL WHITE CHARGER, A BATON IN HIS HAND, JEWEL IN HIS HAT; IN THE BACKGROUND IS A VIEW OF WINDSOR AND ETON, WITH ETON BRIDGE, BOATS ON THE RIVER, A CARRIAGE AND SIX, WITH OUTFRIDERS, AND A REGIMENT OF HORSE ON THE NEAR SIDE OF THE WATER.

** A most spirited and highly interesting gallery picture, and worthy the pencil of Rubens.

LXIII.

JAMES, THE FIRST KING OF ENGLAND, AND SIXTH
OF SCOTLAND.

Pannel, 30 inches by 24, in a black dress, a ruff round his neck, holding the George between his fingers, which is suspended by the blue riband.

LXIV.

JAMES, THE FIRST KING OF ENGLAND, AND SIXTH
OF SCOTLAND.

Pannel, about 18 inches by 14, in a white satin dress, hat and feather, &c.

LXV.

JAMES THE SECOND, KING OF ENGLAND.

Canvas, 30 inches by 24, in armour, flowing hair, when Duke of York; probably by Kneller, in a gilt frame.

LXVI.

JONES, INIGO, ARCHITECT.

Canvas, 24 inches by 22, an oval, a finely painted picture, similar to the prints.

*On sale by H. RODD, }
9, Great Newport-street. }*

LXVII.

JONSON, BEN, POET.

Paper, 18 inches by 14, in a green dress; probably an old copy of Honthorst.

LXVIII.

LANGWITH, BENJAMIN, D.D.

Canvas, 30 inches by 24, in his clerical dress. On the back of the picture is written, in an old hand, "Doc^r. Langwith; H. Winstanley pinx. 1731."

Author of a tract containing Observations and Corrections on Dr. Arbuthnot's "Tables of Ancient Coins, Weights, and Measures, &c." originally published in 1747, and afterwards at the end of a subsequent edition of Tables, 1754.

LXIX.

LEICESTER, ROBERT DUDLEY, EARL OF, FAVOURITE
OF QUEEN ELIZABETH.

PANNEL, 21 INCHES BY 18, IN ARMOUR, RICHLY EMBOSSED WITH GOLD, FIGURES OF MERCURY, &c., HAT AND FEATHER; IN A VERY FINE FRENCH CARVED FRAME, NEWLY GILT.—See front.

** There are small engravings by Goltzius and Marshall that nearly resemble the above curious picture, which was formerly in the possession of the late Octavius Gilchrist, Esq.

LXX.

LESDIGUERES, FRANCIS DES, CONSTABLE OF FRANCE.

Canvas, 20 inches by 14, in a ruff, a collar of H.H. and fleur-de-lis, with the Order of the Holy Ghost, &c., holding the sword of state over his shoulder.

LXXI.

LINDSEY, ROBERT BERTIE, EARL OF.

Canvas, 30 inches by 24, in armour; on the back of the picture, before it was re-lined, was written, "Robt. ye 2d Earle of Lindsey, Lōd Great Chamberlaine of England: obijt May 9, 1701. Done by Hales; cost £5..0..0."

Son of Montague, was *second Robert, Earl of Lindsey*, sworn of the Privy Council to King Charles II, December 12, 1666, and March 19, 1684, constituted Lord Lieutenant and Custos Rotulorum of the County of Lincoln. He first married Mary, second daughter and coheir of John Massingberd, of an antient family in Lincolnshire; and secondly, Elizabeth, daughter of Philip Lord Wharton, from whom are descended the Dukes of Ancaster.

*On sale by H. RODD, }
9, Great Newport-street. }*

LXXII.

LLOYD, HUMPHREY, OF DENBIGH, HISTORIAN OF WALES.

Pannel, 30 inches by 24, holding a book, very finely painted, probably by De Heere : on the picture is painted " Hwv Pery Klod no Glayd, ætatis 34, A. dni 1561 : " in a fine carved and gilt frame, and in most excellent preservation.—See front.

LXXIII.

LOCKE, JOHN, PHILOSOPHER.

Canvas, 30 inches by 24, in a loose morning gown, painted in the style of Vandrebanc, and resembling the prints by Vertue and Smith, &c.

The most celebrated philosopher of the age he lived in, and one of the brightest ornaments of English literature ; was born at Wrington, in Somersetshire, 1632. By the patronage of Lord Shaftesbury he held a situation under Government, and wrote some able political tracts. His Lordship being compelled to fly to Holland to avoid a prosecution for high treason, Mr. Locke followed him. In 1685 the English Envoy demanded him of the States General, on suspicion of his being concerned in Monmouth's rebellion. On this he kept himself private several months, and employed the time in preparing for the press that work which has immortalized his name and fame, the " Essay on the Human Understanding : " it was not published until after the revolution, an event which restored him to his native country. The latter years of his life he devoted chiefly to religious retirement, and to the writing of works on theology ; and died at Oates, in Essex (the seat of Lady Marsham), Oct. 28, 1704.

LXXIV.

LOVELACE, COLONEL RICHARD, POET.

Canvas, 30 inches by 24, in armour, red sash : this picture nearly resembles the one at Dulwich.

Eldest son of Sir William Lovelace, of Bethersden, in Kent, Knt., by Anne, daughter of Sir William Barne, of Woolwich, in the same county ; born in 1618, educated at the Charterhouse, from whence he was removed to Oxford, and became a Gentleman Commoner of Gloucester Hall. He spent a great part of his estate in the cause of Charles the First ; died very poor in 1658, and was buried in St. Bride's Church, Fleet Street.

*On sale by H. RODD, }
9, Great Newport-street. }*

LXXV.

MANCHESTER, CHARLES MONTAGUE, DUKE OF.

Canvas, 30 inches by 24, long wig, cloak, &c. in the manner of Kneller.

Son of Robert Earl of Manchester, by Anne, daughter of Sir Christopher Yelverton, of Easton Maudit, in Northamptonshire, Bart. ; created Duke of Manchester by George the First, 1719. His Grace married Dodington, the youngest of the two daughters and coheirs of Robert Greville, Lord Brooke, by whom he had William and Robert, Dukes of Manchester, the Ladies Anne, Dodington, Elizabeth ; and Charlotte, who married Pattée, Viscount Torrington.

LXXVI.

MARLOW, WILLIAM, LANDSCAPE PAINTER.

Miniature, by Sherlock : from the Collection of Sir M. M. Sykes, Bart.

LXXVII.

MEADE, THOMAS, OF ESSEX, JUSTICE OF THE COMMON BENCH.

Pannel, 19 inches by 18, in his scarlet robes, collar of S.S., arms in the corner ; viz. sa. a cheveron, between three pelicans vulning themselves, or ; and the date 1575, etatis suæ 48.

LXXVIII.

MILTON, JOHN.

Canvas, 54 inches by 40, in cloak and band, sitting at a table, his hand resting on a book, a curtain and books in the background.

*. The print engraved by Faithorne, prefixed to his "History of England," in 4to, bears a stronger likeness to the above than any other.

LXXIX.

MONK, GEORGE, DUKE OF ALBERMARLE, EARL OF TORRINGTON, &c.

Canvas, 48 inches by 38, in armour, nearly down to the knees, resting his hand on a baton, a red sash tied round his arm, the George round his neck, ship on fire in the distance, &c.

*. Originally in the Collection of Sir William Temple, at Farnham, in Surrey, and Companion to Charles the Second : No. XXI.

*On sale by H. RODD, }
9, Great Newport-street. }*

H

LXXX.

MONTAGUE, JOHN, DUKE OF, KNIGHT OF THE GARTER.

Canvas, 30 inches by 24, blue riband, &c., in the manner of Hudson.

Only surviving son of Ralph, Duke of Montague, by Elizabeth, daughter of Thomas Wriothesly, Earl of Southampton, and widow of Josceline, eleventh Earl of Northumberland. In 1705 he married the Lady Mary Churchill, fourth and youngest daughter of John, Duke of Marlborough, by whom he had several sons and daughters, of whom the Lady Isabella was married to William, Duke of Manchester, 1723, and the Lady Mary to George, Earl of Cardigan, 1730.

LXXXI.

NEWSHAM, ———, OF WARWICKSHIRE.

Canvas, 35 inches by 31, a man (time of Charles II) dressed in white, open collar, cloak thrown over his shoulder, arms in the corner; viz. quarterly 1st and 4th arg. three cross crosslets on a fess sable, 2d and 3d gules, a chevron ermine between three buckles, or; impaling, vert, a chevron between three lozenges, or, the first charged with a fleur-de-lis, gules.

* * H. R. will feel obliged if any gentleman will inform him whom the above portrait represents.

LXXXII.

NOEL, BAPTIST.

Canvas, 18 inches by 14, a young man in a rich Roman costume of crimson: on the picture was written "Baptist Noel, 1679." In the style of, and most probably by, Netscher.

LXXXIII.

NOEL, PENELOPE, SISTER OF BAPTIST NOEL.

Canvas, 18 inches by 14, sitting on a bank, holding flowers; in the style of Netscher. On the back of the picture was written, "The Ladye Penelope Noel, 1679." A companion picture to No. LXXXII.

* * The above portrait, and the companion, represent some of the family of Baptist Noel, Viscount Gainsborough and Earl of Campden, who was of such eminent service to King Charles the First.

On sale by H. RODD, }
2, Great Newport-street. }

LXXXIV.

NORTHUMBERLAND, ALGERNON PERCY, EARL OF.

Canvas, oblong, 42 inches by 30, in armour, holding a baton, resting his hand upon an anchor, ships in the distance, &c. ; finely painted.

* * * From the Collection of Sir William Temple, at Farnham, in Surrey.

LXXXV.

NORTHUMBERLAND, ALGERNON PERCY, EARL OF,
AND FAMILY.

CANVAS, OBLONG, 5½ FEET BY 4 FEET, RESTING HIS HAND ON A SOFA, ON WHICH SITS HIS WIFE, ROSES IN HER LAP, A CHILD BY HER SIDE : A WELL COLOURED AND EXCELLENT PICTURE, PROBABLY BY OLD STONE.

This nobleman was the third son of Henry, the ninth Earl of his family, by Dorothy, daughter of Walter Devereux, Earl of Essex, and widow of Sir Thomas Perrot. He was born in the year 1602. On the 13th of May, 1635, he was installed a Knight of the Garter; and in the succeeding year was appointed to command the largest fleet that the crown had put to sea since the death of Queen Elizabeth; and on the 13th of March, 1637, he was raised to the office of Lord High Admiral of England. He married first to Anne, daughter of William Cecil, Earl of Salisbury, by whom he had five daughters; Catherine, Lucy, Dorothy (who died young), Anne (married to Philip Lord Stanhope, after her death Earl of Chesterfield), and Elizabeth, married to Arthur Lord Capel, afterwards created Earl of Essex: secondly, to Elizabeth, daughter of Theophilus Howard, Earl of Suffolk, by whom he had an only son, Josceline, who succeeded him, and one daughter, Elizabeth, who died an infant. He died on the 13th of October, 1668, and was buried at Petworth, in Sussex.

LXXXVI.

OATES, TITUS, DISCOVERER OF THE POPISH PLOT.

Canvas, 30 inches by 24, in his clerical habit.

*On sale by H. RODD, }
9, Great Newport-street. }*

LXXXVII.

ORANGE, WILLIAM I. OF NASSAU, PRINCE, MURDERED.

PANNEL, ABOUT 24 INCHES BY 18, IN ARMOUR; SAME AS ENGRAVED BY HOUBRAKEN, AFTER

LXXXVIII.

PARR, THOMAS, THE OLD, OLD, VERY OLD MAN.

Canvas, 50 inches by 40, in a brown dress, holding a stick.

He was the son of John Parr, of Winnington, in the parish of Alberbury, in Shropshire; born in the year 1483, in the reign of Edward the Fourth. At the age of one hundred and twenty he married Catherine Milton, his second wife; and after that era of his life was employed in threshing, and other husbandry work. When he was about one hundred and fifty-two years of age he was brought up to London by Thomas, Earl of Arundel, and carried to court, having lived in the reigns of ten sovereigns.

LXXXIX.

PEMBROKE, WILLIAM HERBERT, EARL OF, LORD
CHAMBERLAIN, AND CHANCELLOR OF THE
UNIVERSITY OF OXFORD.

Canvas, 30 inches by 24, in a black satin dress, Order of the Garter, Chamberlain's staff, &c.; in the manner of Van Somer.

The eldest of the two sons of Earl Henry, by his third Countess, the celebrated Mary, daughter of Sir Henry and sister of Sir Philip Sidney; born at Wilton, on the 8th of February, 1580. On the 19th of January, 1600-1, succeeded to his father's dignities, and was among the first Knights of the Garter elected after the accession of James I. He was appointed Governor of Portsmouth in 1609, and in 1615 to that of Lord Chamberlain of the Household; afterwards made Chancellor of the University of Oxford. His Lordship married Mary, the eldest daughter and coheir of Gilbert, seventh Earl of Shrewsbury and had by her two sons, James and Henry, neither of whom survived infancy. He died suddenly, at Baynard's Castle, on the 10th of April, 1630, and was buried in the Cathedral of Salisbury.

*On sale by H. RODD, }
9, Great Newport-street. }*

XC.

PEMBROKE AND DORSET, ANNE CLIFFORD, COUNTESS OF.

Pannel, 18 inches by 14, jewels in her hair, &c., at about the age of 16: there is a rare print by Robert White, which corresponds in likeness and nearly in costume.

The only surviving child, and, at length, sole heiress of the gallant and eccentric George Clifford, third Earl of Cumberland, by Margaret, third daughter of Francis Russell, Earl of Bedford, and born at her father's seat of Skipton Castle, in Yorkshire, on the 13th of January, 1589. She married young to Richard, third Earl of Dorset; and afterwards, when she had passed the age of forty, to Philip Herbert, Earl of Pembroke: she had by Lord Dorset three sons, who died infants, and two daughters, Margaret, married to John Tufton, Earl of Thanet, and Isabella to James Compton, Earl of Northampton. Died at her castle at Brougham, on the 22d of March, 1675.

XCI.

PHILIP THE SECOND, KING OF SPAIN, AND CONSORT OF
MARY, QUEEN OF ENGLAND.

Pannel, 16 inches by 13, in armour, Order of the Golden Fleece, &c.; very finely painted, probably by Sir Anthony More.

XCII.

POLE, REGINALD, ARCHBISHOP OF CANTERBURY, AND
CARDINAL OF ROME.

Pannel, 9 inches by 7, in his Cardinal's dress; an old Italian portrait, and most probably painted while he resided at Padua.

XCIII.

PORTLAND, RICHARD WESTON, EARL OF, KNIGHT OF
THE GARTER, LORD HIGH TREASURER.

CANVAS, 7 FEET BY 4½, A WHOLE LENGTH FIGURE, RESTING AGAINST A PILLAR, DRESSED IN BLACK, HOLDING THE CHAMBERLAIN'S STAFF IN HIS LEFT HAND, AND A PAPER IN THE OTHER: PAINTED IN THE STYLE OF VAN SOMER.

*** The prints etched by Hollar, Gaywood, and Vandyck are of this nobleman, but erroneously inscribed "Jerome:" this circumstance has no doubt led to the mistake in "Lodge's Portraits," saying "the graver had not until then rendered his person familiar to our view."

*On sale by H. RODD, }
9. Great Newport-street. }*

Was the only child of Sir Jerome Weston, of Skrynes, in the parish of Roxwell, in Essex, Knt. by Mary, daughter of Anthony Cave of Chichely, Bucks; bred in the Middle Temple to the study of the law. He was sent as joint ambassador to Prague, with Sir Edward Conway; and the year following to Brussels. Soon after his return he became a Privy Counsellor, and in 1624 was appointed Treasurer of the Exchequer. On the 13th of April, 1628, Charles the First advanced him to the dignity of a Baron, by the title of Lord Weston, of Neyland, in Suffolk; and in July, Lord High Treasurer; elected Knight of the Garter, 1631; had a grant of Chute Forest, in Hampshire, and made Governor of the Isle of Wight 1632, and Earl of Portland 1633. He died at Wallingford House, in Westminster, 1634, and was buried in the cathedral at Winchester. This nobleman was twice married; first to Elizabeth, daughter of William Ponchion, of Writtle, in Essex, by whom he had one son, Richard, who died unmarried, and two daughters, Elizabeth, married to Sir John Netterville, in Ireland, and Mary, to Walter Lord Aston, of Forfar, in Scotland. The Earl's second lady was Frances, daughter of Nicholas Waldegrave, by whom he had four sons and four daughters: 1. Jerome, who succeeded him; 2. Thomas; 3. Nicholas; 4. Benjamin. The daughters were, 1. Catherine, wife of Richard White, of Hutton, in Essex; 2. Frances, wife of Philip Draycote, of Paynesley, in Staffordshire; 3. Anne, married to Basil Lord Fielding; and 4. Mary, who died unmarried.

XCIV.

PRIOR, MATTHEW, POET.

Canvas, 30 inches by 24, in a red coat, velvet cap, &c.; finely painted in the style of Richardson.

Born in London, 1664, and educated at Westminster School; was taken particular notice of by the Earl of Dorset, who sent him to St. John's College, Cambridge, where he afterwards became a Fellow. Upon the revolution his patron brought him to court, and in 1690 he was made Secretary to the Earl of Berkeley, Plenipotentiary at the Hague, as he was afterwards to the ambassadors and plenipotentiaries at the treaty of Ryswick, 1697, in which year he was made Secretary of State for Ireland. Soon after the succession of George the First he presented a memorial to the court of France, requiring the demolition of the canal and the new works at Mardyke. The year following he was recalled, and on his arrival was taken up by a warrant from the House, and strictly examined by a committee of the Privy Council. Robert Walpole, Esq. moved the House of Commons for an impeachment against him, and Mr. Prior was

*On sale by H. RODD, }
9, Great Newport-street. }*

ordered into close custody. In 1717 he was excepted from the Act of Grace, and not set at liberty until the close of the same year. The remainder of his days he spent in tranquillity and retirement, and died in 1721.

XCV.

RADNOR, JOHN ROBERTS, EARL OF.

Canvas, 30 inches by 24, in ermine robes, by Kneller.

* * The print taken from the above picture is a mezzotint, by Robert White, and extremely rare.

Son of John Lord Roberts, by Mary, daughter and coheir of John Bender of Botreux Castle, in Cornwall, was frequently called to several of the highest employments in the state, and at the restoration of King Charles II was made Privy Seal, in which office he continued many years, and in 1669 was Lord Lieutenant of Ireland; also by commission often constituted Speaker of the House of Lords, and for several years before his death made President of the Council; all which, and other high trusts, he discharged with great ability, integrity, and courage: created a Viscount and Earl, and died the 17th of July, 1685. By his first wife, Lucy, daughter of Robert, Earl of Warwick, he had Robert, his heir apparent; and by his second, Isabella, daughter to Sir John Smith, Knt. he had another son, named Francis, and four daughters: 1. Isabella, married to Lord Moor, eldest son of Lord Drogheda, in Ireland; 2. Araminta; 3. Olimpia; and 4. Essex. Francis married Anne, the widow of Hugh Boscawen, of Tregothian, in Cornwall, and daughter of Wentworth Fitzgerald, Earl of Kildare.

XCVI.

RAINSFORD, SIR RICHARD, CHIEF JUSTICE OF THE KING'S BENCH.

Canvas, 30 inches by 24, in his judicial robes: a print very similar to the above picture, from one in the possession of — Rainsford, Esq. was published in "Harding's Biographical Mirror."

* * From the collection of Sir William Temple, at Farnham.

Born in 1605, Member of Lincoln's Inn, and called to the degree of Sergeant at Law Oct. 5, 1660; in 1663 appointed one of the Barons of the Exchequer, and 1668 a Justice of the King's Bench. On the resignation of Sir Matthew Hale, in 1676, Sir Richard Rainsford was constituted Lord Chief Justice, which high office he held two years. He died in February 1677, aged 75 years, and was buried at Dallington, in Northamptonshire, where he had erected an alms-house for old men and women. He was married to Catherine, daughter of Samuel Clarke, S.T.P., by whom he had twelve children.

*On sale by H. ROND, }
9, Great Newport-street. }*

XCVII.

RAWSON, SIR THOMAS, MERCHANT, OF LONDON.

Canvas, 43 inches by 36, in a black dress, skull-cap, holding gloves in his hand; in the corner are the arms of Rawson, quartered with the Merchant Taylors, East India Company's, and the City of London, and date of 1648, ætatis suæ 79: in a very curious carved frame, newly gilt.

XCVIII.

REISEN, CHARLES CHRISTIAN, SEAL ENGRAVER.

Canvas, 36 inches by 28, holding a seal in his hand: by Vanderbanc, 1722; the original picture from which the print by George White was engraved.

** Purchased at the sale of the late Mr. Grignon, Watchmaker, Covent Garden.

Son of Christian Reisen, Seal Engraver, a native of Drontheim, in Norway; was born in the parish of St. Clement's Danes, but resided many years in Covent Garden, then the principal seat of ingenuity and art, carrying on the same profession as his father, in which he rose to great eminence: he had also a small house at Putney, a view of which, intended as a satire upon him, was engraved by George Vertue, but without his name, and published under the fantastic title of Bears-den Hall. He was appointed director of the Academy under Sir Godfrey Kneller, and displayed his taste by forming a collection of medals, prints, drawings, and books. He died Dec. 16, 1725, and was buried in the cemetery of St. Paul's, Covent Garden.

XCIX.

RICHMOND AND LENOX, MARGARET PLANTAGENET, DUCHESS OF, MOTHER OF HENRY THE SEVENTH, FOUNDER OF ST. JOHN'S AND CHRIST'S COLLEGES, CAMBRIDGE.

Pannel, in the habit of an Abbess, holding a missal, the background richly ornamented with green damask and gold: supposed to be by Lucas Cranach, very curious.

** There are several prints nearly resembling the above.

Mother of King Henry VII; was a lady as illustrious by her personal endowments as by her birth. She was daughter and sole heiress of John Beaufort, Duke of Somerset, who was grandson of John of Gaunt, Duke of Lancaster, fourth son of Edward III. She married Edmund, Earl of Richmond, by which marriage and by birth, Bishop Fisher, in her funeral sermon, says she was allied to thirty kings and queens, within the fourth

*On sale by H. RODD, }
9, Great Newport-street. }*

degree either of blood or affinity. By this Earl she had an only son, who gained the throne by the defeat of Richard the Third, at Bosworth. Edmund died 1456; after which Margaret married Sir Henry Stafford, second son of the Duke of Buckingham, by whom she had no issue; and at his death, 1482, she married Thomas Stanley, Earl of Derby, who also died before her, 1504. She lived to see her son the King carried to his grave, and, dying three months after him, was buried in his chapel, where there is a rich monument erected over her. The virtues of this lady are exceedingly celebrated; and in proof of her pious humility, a saying of her's is recorded, "that if the princes of Christendom would march against their common enemies the Turks, she would willingly attend the camps as their laundress." She founded the colleges of Christ's and St. John's, Cambridge, also a professorship of divinity in each University.

C.

ROCHFORD, WILLIAM HENRY, ZULEISTEIN, OF NASSAU,
EARL OF.

CANVAS, 34 INCHES BY 28, IN A LACED COAT, BLACK HANDKERCHIEF, &c.: BY
DUPUIS.

*** This picture has been engraved in mezzotinto, by Houston.

Son of Frederick, Earl of Rochford, by Bessy, daughter of Richard Savage, Earl of Rivers (who died Aug. 18, 1712, and by his will left her his estate); in 1738 was appointed Lord of the Bedchamber, and constituted Vice Admiral of the Coasts of Essex. In 1749 he was sent Envoy-extraordinary and Plenipotentiary to the King of Sardinia, where he resided with great reputation. On his return from Turin, his Majesty appointed him Groom of the Stole and First Lord of the Bedchamber. On the 11th of March he was sworn of the Privy Council, and took his place at the board accordingly. His Lordship married Lucy, daughter of Edward Younge, of Durnford, in Wiltshire, one of the Maids of Honour to her Royal Highness the Princess of Wales.

CI.

RYCAUT, SIR PAUL, AMBASSADOR TO THE OTTOMAN EMPIRE,
AND HISTORIAN OF THE TURKS.

Canvas, 49 inches by 37, nearly down to the knees, in a brown coat and black embroidered waistcoat, long wig and band, hat and gloves in his hands; in the background are trees, a house, and pillar on which is inscribed "Sir Paul Rycaut, Rundt fecit, 1691."

*** Purchased from the Collection of the late Richard Owen Cambridge, Esq. at Twickenham.

On sale by H. RODD, }
9, Great Newport-street. }

K

An eminent English traveller; in 1661 was appointed Secretary to the Earl of Winchelsea, who was sent Ambassador extraordinary to the Ottoman Porte. During his continuance in that station he wrote the "Present State of the Ottoman Empire." He afterwards resided eleven years as Consul at Smyrna, where, at the command of Charles the Second, he composed the "Present State of the Greek and Arminian Churches," 1678. On his return, Lord Clarendon, being appointed Lord Lieutenant of Ireland, made him his principal Secretary for Leinster and Connaught. King James the Second knighted him, made him one of the Privy Council in Ireland, and Judge of the Court of Admiralty; all which he held till the revolution. He was employed by William the Third as Resident at the Hanse Towns, in Lower Saxony; but, being worn out with age and infirmities, he obtained leave to return in 1700, and died the same year.

CII.

SALISBURY, ROBERT CECIL, EARL OF, SECRETARY OF STATE TO QUEEN ELIZABETH AND KING JAMES.

Pannel, 22 inches by 18, with the Treasurer's staff.

CIII.

SCOTLAND, MARY STEWART, QUEEN OF.

Canvas, 16 inches by 13, in bonnet and veil.

*** There is a very rare small print, by Hollar, which is like this picture.

CIV.

SCOTT, BARTHOLOMEW, ESQ., LORD OF THE MANORS OF PECKHAM AND CAMBERWELL, IN SURREY.

Pannel, about 40 inches by 30, nearly down to the knees, in a black dress, holding gloves, and resting his hand on a table: in the corner are the arms of Scott quartering those of Bockwell, Skynner, and others.

Son of John Scott, by Elizabeth, daughter of William Robins, merchant of staple, at Calais; became possessed of large property in Camberwell, Peckham, East Dulwich, Carshalton, &c.; died without issue 1601, having had three wives: 1. Margaret Whitechurch, Nov. 29, 1564, widow of Abp. Cranmer; 2. Christian, Widow of ——— Laud, buried July 20, 1597; 3. Margaret, widow of William Gardynner, Esq.

*On sale by H. RODD, }
9, Great Newport-street. }*

CV.

SCROPE, ADRIAN, COLONEL OF THE PARLIAMENT'S ARMY.

Canvas, 50 inches by 40, in armour, holding his helmet, which is resting on a pedestal.

On the pedestal is written, "Colonel Adrian Scrope, who suffered death in 1660."

Descended from a very respectable family in Buckinghamshire; in 1648 he took up arms for the Parliament, and obtained a great victory against the Duke of Buckingham, at St. Neots, in Huntingdonshire, soon after which he made his way to Yarmouth with eight troops of horse and dragoons, which were attacked by the Prince and Duke of York. His sentiments were so well known with respect to a republican government and his dislike to the person of King Charles the First, that he was appointed one of the Commissioners of the High Court of Justice: he sat every day in the Painted Chamber and in Westminster Hall, and signed and sealed the warrant for the King's execution. In 1649 he was made Governor of Bristol Castle, where he remained some time; but being thought a person of too much "honour and worth," by those in power, to hold a place of that consequence, was removed, and appointed one of the Commissioners to Scotland, 1657. On the restoration of Charles the Second he delivered himself up to the Speaker, and a vote was made that he should be only fined a year's value of his estate; but having been heard to say "he did believe the death of the King to be no murder," &c. he was excepted from the Act of General Pardon, tried, and executed October 17, 1660.

CVI.

SELDEN, JOHN.

Canvas, 20 inches by 16, a sketch from the picture by Lely, in the Bodleian Gallery, at Oxford.

An English antiquary, historian, and law writer, of most extensive learning; born in 1584, at Salvington, in Sussex. He served in Parliament, first of Lancaster in 1623, and afterwards in most of King Charles's Parliaments: died in 1654.

*On sale by H. RODD, }
9, Great Newport-street. }*

CVII.

SEYMOUR, SIR EDWARD, BART., SPEAKER OF THE
HOUSE OF COMMONS.

*Canvas, 50 inches by 40, in the Speaker's dress, holding a paper in his hands, inscribed
"An Act for better securing the Liberty of the Subject and for Prevention of
Imprisonment beyond the Seas." By Sir Peter Lely.*

Son of Sir Edward Seymour, by Anne, daughter of Sir John Portman, Bart.; was several times chosen Speaker of the House of Commons, of the Privy Council, and Treasurer of the Navy in the reign of Charles the Second; also one of the Lords of the Treasury and of the Privy Council to King William and Queen Anne. He died 1707, having been twice married; first, to Margaret, daughter of Sir William Wale, of London, by whom he had Sir Edward, his successor, and William, a Lieut.-General under Queen Anne; secondly, to Letitia, daughter of Sir Francis Popham, of Littlecote, Wiltshire, by whom he had Popham (killed in a duel with Colonel Kirke), Francis (who inherited the estates of the Earl of Conway, and was created Lord Conway by Queen Anne), Charles (to whom the said Barony was limited), Henry, John, and Alexander.

CVIII.

SHELDON, WILLIAM, ESQ. OF BEOLEY AND WESTON.

*Canvas, 30 inches by 24, in a black dress and ruff. On the picture is written
"Wm: Sheldon, ÆT: 50, AN: DM: 1560."*

Son of Ralph Sheldon, of Beoly, Esq., by Philippa, daughter and coheir of Baldwin Heath, of Ford Hall, in Wotton-Wawen, in Warwickshire. He married two wives; first, Mary, eldest daughter and coheir of William Wellington, of Barcheston, in Warwickshire, with whom he had a considerable estate in that county, viz. the manors of Barcheston, Ditchford, and Fullredy; secondly, Margaret, daughter of Sir Richard Brook, Knt., Lord Chief Baron of the Exchequer, and relict of Sir William Thorwood, Attorney General to Henry VIII. By his first wife he had the following issue: viz. Ralph, his heir; William, aged 27 at his father's death in 1570, who married Elizabeth, daughter of Sir Richard Leveson; Anne, married first to Francis Savage, of Elenby Castle, in Worcestershire, secondly to Anthony Daston, of Dumbleton, in the county of Gloucester;

*On sale by H. RODD, }
9, Great Newport-street. }*

Philippa, married to Anthony Pollard, of Baldon in the county of Oxford; Goodith, married to Robert Brayne, of St. James's, in Bristol; and Katherine, to Edmund Plowden, of Plowden, in Salop. This William first introduced the working of tapestry into England: he died at Skilts, in Warwickshire, December 23, 1570, and was buried at Beoley on the 15th of January following.

CIX.

SHELDON, RALPH, ESQ.

Pannel, 31 inches by 25, in a black dress, his right hand leaning on his side, his left resting on his sword. On the picture is written, "Ralph Sheldon, æt^s 63, An^o D^m 1590."

Son and heir to the preceding; was aged 33 years at his father's death, in 1570; married Anne, daughter of Sir Richard Throgmorton, of Coughton, in Warwickshire, by whom he had one son, Edward, his successor, and nine daughters, all of whom married into families of considerable note. This Ralph purchased Steeple Barton, in the county of Oxford. He built a handsome chapel adjoining to the church of Beoley, and dying March 30, 1613, was buried therein, together with his lady, who died 16th Dec. 1603.

CX.

SHELDON, WILLIAM, ESQ.

Pannel, 29 inches by 24, in a black dress. On the picture is written, "W^m. Sheldon, Æ^s. 46, AN^o. 1590."

Brother to the preceding; married Elizabeth, daughter to Sir Richard Leveson, of Lyleshill, or Lilsell, in the county of Salop, Knt.: died without issue.

CXI.

SHELDON, RALPH, ESQ.

Pannel, 35 inches by 25, in a black dress and cap, his right hand resting on a pedestal, his left holding his sword, hanging by a belt richly ornamented. On the picture is written, "Ralph Sheldon, An^o. D^m. 1565, ætatis suæ 28;" and the following motto:

"Effigiem veram non veram tempora redent

"Tempus enim juvenem fecerit esse senem."

*On sale by H. RODD, }
9, Great Newport-street. }*

L

*On sale by H. RODD, }
9, Great Newport-street. }*

CXII.

SHELDON, EDWARD, ESQ.

Pannel, 24 inches by 30, in a black dress, his left hand holding his sword, his right leaning on his side. On the picture is written, "Edward Sheldon, æt. 38: An^o. Dm. 1590."

Son and heir of Ralph Sheldon; succeeded his father in a very large estate. He married Elizabeth, daughter of Thomas Markham, of Cottam and Atterton in the county of Nottingham, Esq., Standard Bearer to the Band of Gentlemen Pensioners in the reign of Queen Elizabeth, by whom he had issue, William, his heir; Ralph, of Steeple Barton; and Edward, who inherited the manor of Stretton, and married Mary, daughter of Lionel Wake: Frances, who died unmarried; Anne, married to Henry Lucy; and Joan, to Sir Henry Appleton, in Essex, Bart. He died October 6, 1643, aged 83.

CXIII.

SHELDON, RALPH, ESQ.

Canvas, 30 inches by 24, in an oval black dress, laced collar, and long flowing hair. On the picture is written "Ralph Sheldon."

Born August 4, 1623; son of William Sheldon, of Beoley, Esq. (born at Weston, 9th March, 1588-9, ob. 6th April, 1659, buried at Beoley) by Elizabeth, daughter of William Lord Petre (born 27th September, 1592, married 1611, ob. 20th Jan. 1656, also buried at Beoley), and grandson to the preceding; married Henrietta Maria Savage, daughter of Thomas, Lord Darcy and Earl Rivers. He died at his manor house of Weston, in the parish of Long Compton, in the county of Warwick, on Midsummer Day, 1684, aged 61 years. As he had no children, and his brother, the Benedictine, piously refused to intermeddle with secular affairs, he left his estate to Ralph Sheldon, of Steeple Barton, his next male heir, son of Edward Sheldon, his first cousin, who was son of Ralph, second son of Edward Sheldon by Elizabeth Markham.

This Ralph Sheldon was a person of such rare worth and excellent qualities as deserve particular notice, being a great patron of learning and learned men (amongst whom was the celebrated Anthony à Wood), and well skilled in the history and antiquities of his own county. He purchased the valuable manuscripts of the ingenious Augustine Vincent, which at his death he bequeathed to the Heralds' College, where they are still preserved. In short, his remarkable integrity, charity, and hospitality, were such as gained him the universal esteem of all the gentlemen of the county.

*On sale by H. RODD, }
9, Great Newport-street. }*

CXIV.

SHELDON, LADY MARY, WIFE OF SIR SAMUEL TUKE, BART.

Canvas, 50 inches by 40, richly attired, putting flowers into a vase which she is opening: very finely painted in the style of Sir P. Lely. On the picture is written "Lady Mary Sheldon."

Daughter of Edward Sheldon, Lord of Stratton, in the county of Gloucester (who died 27th March, 1687, buried in St. James's chapel, Westminster), by Mary, daughter of Lionel Wake, of Antwerp, and of Pedington in the county of Northampton. She married Sir Samuel Tuke, of Cressing Temple, in the county of Essex, Bart.

*** The preceding curious portraits of the Sheldon family were purchased lately at the antient family seat at Weston, in Long-Compton, Warwickshire.

CXV.

SHELLY, SIR JOHN, OF MICHEL GROVE, IN SUSSEX, BART.

Canvas, 50 inches by 40, in a red coat (hunting dress), wig and band, resting his hand upon a dog, view of Michel Grove in the distance.

*** From the Sheldon collection, at Long-Compton.

CXVI.

SHELLY, LADY, WIFE OF SIR JOHN SHELLY, OF MICHEL GROVE, IN SUSSEX, BART.

Canvas, 50 inches by 40, sitting on a bank, trees in the background, &c.

*** A companion picture to the preceding, and from the same collection.

CXVII.

SHERLOCK, THOMAS, BISHOP OF LONDON.

Canvas, 50 inches by 40, three-quarters length, with a walking-stick, Order of the Garter, &c.; finely painted, by Hudson.

On sale by H. RODD, }
9, Great Newport-street. }

CXVIII.

SIDNEY, ALGERNON.

Canvas, 54 inches by 42, nearly down to the knees, jacket, cuirass, &c., holding a walking-stick in his right hand, his left against his side, flowers, &c. in the background : finely painted.

CXIX.

SOAMES, SIR STEPHEN, LORD MAYOR OF LONDON.

Pannel, about 18 inches by 14, in the dress of an Alderman.

Ancestor of the Soames of Thurlow, Suffolk ; was second son of Thomas Soame, of Botely, alias Bately, in Norfolk, by Anne, daughter and heir of Francis Knighton, of Little Bradley, in Suffolk, relict of Richard Lehunt, of the same place ; was made Sheriff of London 1589, and Lord Mayor 1593. He endowed a school at Thurlow out of the manor of Carleton, and died at that place May 23, 1619, aged seventy-five.

CXX.

SOUTHCOTE, JOHN, OF BULMER IN ESSEX, AND MERSTAM
IN SURREY, ESQUIRE.

Pannel, 31 inches by 24, in a brown embroidered suit, atatis suæ 35, 1589 ; arms in the corner quartering those of Keyns, Pury, Bosom and St. George : painted in the style of Marc Garrards.

Descended from the Southcotes of Devonshire ; was son of Sir John Southcote, Chief Justice of the King's Bench, by Elizabeth, daughter and heiress of William Robins, of London ; died 12th June, 1637 ; seized of the manor of Albury, in Merstam, a capital messuage and lands there called the Deane, and other lands there, and in Gatton, Bletchingly, and Chaldon.

CXXI.

SPELMAN, SIR HENRY, ANTIQUARY.

Canvas, 30 inches by 22, in a cloak and cap : the same as engraved by Faithorne.

*On sale by H. RODD, }
9, Great Newport-street. }*

CXXII.

STEELE, SIR RICHARD.

Canvas, 30 inches by 24, in a red velvet cloak, lined with blue, band, wig, &c. : in the style of Kneller.

CXXIII.

STEWART FAMILY, MINIATURES OF THE;

1. { JAMES FRANCIS EDWARD, called the "OLD PRETENDER,"
CLEMENTINA SOBIESKI, HIS WIFE;
2. CHARLES EDWARD, called the "YOUNG PRETENDER;"
3. BENEDICT, CARDINAL OF YORK.

** The above three highly interesting and beautiful miniatures, mounted in silver, have been carefully preserved in a black seal-skin case, and were formerly in the collection of the late Earl Beauchamp.

CXXIV.

STILLINGFLEET, EDWARD, BISHOP OF WORCESTER.

Canvas, 30 inches by 24, in his Bishop's dress : painted by Mary Beale.

CXXV.

STOUGHTON, SIR NICHOLAS, OF STOUGHTON,
IN SURREY, BART.

Canvas, 50 inches by 40, in a Civilian's dress, sitting at a table on which are laying a book lettered "Hugo Grotius," and papers, one directed to him; a curtain and library in the background : a finely painted picture by Walker.

Son of Anthony Stoughton; became possessed of the manor of Stoughton, in the parish of Stoke, at the age of fourteen, 1649. By indenture dated 1650, and fine levied thereupon, the Corporation of Guildford relinquished to him all their right to and interest in the advowson of the rectory. In July 1653 he was entered a Gentleman Commoner of Exeter College, in Oxford; and 12th March, 1656-7, was admitted to the degree of Bachelor of Laws. On the 18th of May, 1659, he proceeded Doctor, having

*On sale by H. RODD, }
9, Great Newport-street. }*

M

obtained a letter to the University for that purpose from Richard Cromwell, their Chancellor, dispensing with the residue of his terms; and January 29, 1660-1, was created a Baronet. On the 2d of June, 1662, he married Elizabeth, daughter of Sir Henry Massingberd; and in 1663 was made Sheriff of Surrey. He died 30th June, 1686, leaving nine children, and was buried in the parish church of Stoke.

CXXVI.

STRAFFORD, THOMAS WENTWORTH, EARL OF,
LIEUTENANT OF IRELAND.

Canvas, 50 inches by 40, in armour, baton in his hand, army in the distance: very finely painted.

CXXVII.

SWIFT, JONATHAN, DEAN OF ST. PATRICK.

Canvas, 24 inches by 19, in his band and surplice: in the style of Kneller, similar to the engraving by Vertue.

CXXVIII.

SYDENHAM, THOMAS, M.D.

Canvas, 30 inches by 24, in a cloak and band: by Mary Beale; the same as engraved by Elder.

CXXIX.

THORESBY, RALPH, HISTORIAN OF LEEDS.

Canvas, 20 inches by 16, in a brown dress; similar to the print by Vertue, in a gilt frame.

** From the collection of Sir M. M. Sykes, of Sledmere, in Yorkshire.

An eminent antiquary, born at Leeds, in Yorkshire, 1658. He succeeded his father in his business as a merchant; yet learning and antiquities took such firm possession of his mind, that, contenting himself with a moderate patrimony, he made those researches the great employment of his life. He published "Ducatus Leodiensis, or the Topography of Leeds," also a "History of the Church of Leeds," &c., and died in 1725.

On sale by H. RODD, }
9, Great Newport-street. }

CXXX.

TORRINGTON, THOMAS NEWPORT, LORD.

Canvas, 50 inches by 40, in his robes, hand resting on a coronet, landscape in the background; finely painted by Sir Godfrey Kneller.

*** The print of this Nobleman, engraved by Smith, after the same master, was taken from a painting 1709 (before his creation to the Peerage), and resembles the picture in every part except the dress, which represents him in that of a Baron.

Thomas Newport was the son of Francis, Earl of Bradford, whose family interest introduced him to the office of a Commissioner of the Customs in the reign of William and Mary, being at the same time a member of the House of Commons for Ludlow, at which board he continued during the reigns of Queen Anne and George I, shortly after whose accession he was created Baron Torrington, of the county of Devon. He was successively a Commissioner of the Treasury, a Privy Counsellor, and, lastly, one of the Tellers of the Exchequer. His Lordship died May 27, 1719, having been thrice married: his first wife was the daughter of Lord Chief Baron Atkyns; his second, Penelope, daughter of Sir Orlando Bridgeman, Bart.; and his third, the daughter of Francis Pierpoint, of Nottingham, Esq.

CXXXI.

TORRINGTON, ANNE PIERPOINT, WIFE OF
THOMAS NEWPORT, LORD.

Canvas, 50 inches by 40, seated, in a blue dress, a curtain and landscape in the background, &c.

*** This picture, companion to the above, which has the name of the artist upon it, was engraved by J. Smith, in mezzotinto, 1720.

CXXXII.

TRADESCANT, JOHN, AND HESTER HIS WIFE.

Canvas, oblong, in two ovals of palm: originally in the collection of the late Dr. Wright, of Lichfield.— See front.

On sale by H. RODD, }
9, Great Newport-street. }

CXXXIII.

VANBRUGH, SIR JOHN, ARCHITECT AND POET.

Canvas, 42 inches by 36, in a red dress, leaning against a pedestal, holding a plan of Blenheim; finely painted by Richardson.

*** There is an engraving by Faber from the above.

CXXXIV.

VERNON, LADY MARY HOWARD, WIFE OF GEORGE LORD VENABLES.

Canvas, 50 inches by 40, in a white satin dress, leaning on a pedestal, on which is inscribed, "The Hon. Mary Venables Vernon, Wife to George Venables Vernon, Esq. and Daughter to Thomas Lord Effingham Howard."

Daughter of Thomas Howard, sixth Earl of Effingham, by Mary, daughter of Rush Wentworth, Esq.; married to George Venables, first Lord Vernon, June 21, 1733, by whom he had, 1. George Venables Vernon, who succeeded him; 2. Harry; 3. Howard; 4. Mary, who all died young; and 5. Mary, born December 19, 1739; married January 5, 1763, to George Anson, Esq. of Staffordshire.

CXXXV.

VERNON, ———, A YOUNG MAN.

Canvas, 13 inches by 10, in long flowing hair, in half armour, slash sleeves, &c.; painted about 1700: from the same collection as the former. At the back were the arms of Vernon, quartering several other coats.

CXXXVI.

WESLEY, REV. SAMUEL.

Canvas, 30 inches by 24, in his clerical dress.

An English divine and poet, born in Dorsetshire, 1666; died 1735; father of the celebrated John Wesley.

On sale by H. RODD, }
9, Great Newport-street. }

CXXXVII.

WETENHALL, COLONEL THOMAS, OF EAST PECKHAM, IN KENT.

Canvas, 30 inches by 24, in armour; in the corner are his arms, impaled between those of his two wives.

Married to his first wife, the Lady Mary Talbot, daughter of John Talbot, tenth Earl of Shrewsbury, by his first wife, Mary, daughter of Sir Francis Fortescue, of Salden Hall, in Buckinghamshire, Knight of the Bath; his second wife, Elizabeth, daughter of Sir Henry Bedingfield, of Oxborough, in Suffolk, Bart., by Margaret, only child of Edward Paston, of Appleton, in Norfolk, Esq.

CXXXVIII.

WHITCHCOTE, COLONEL CHRISTOPHER, GOVERNOR OF WINDSOR CASTLE.

Canvas, 30 inches by 24, in a black dress, his hand up to his breast. On the Picture is "Ætatis 32, Annorum 1634."

** From the collection of the late Dr. Wright, of Lichfield. There is a small modern engraving like the above picture, excepting that it has a view of Windsor in the corner.

Son of Christopher Whitchcote, of Stoke, in the county of Salop, Esq., by Elizabeth his wife, daughter of Edward Fox, of Grete, in the said county. "Whilst the unfortunate Charles the First was a prisoner at Windsor, he was a Colonel in the Parliamentary army, and Governor of Windsor Castle; but though necessity had made him the keeper of his King, yet it was evidently not his wish; nor can we doubt his loyalty, however he might be obliged to act from the circumstances of the times, when it appears that he exerted himself to soften the miseries of his royal prisoner. It is recorded, that, whilst at Windsor, the imprisoned Monarch spent the greater part of each forenoon in prayer and other exercises of piety; and part of the afternoons he appropriated for health, by taking recreation on the terrace, accompanied by the Governor, Colonel Christopher Whitchcote. At this time, by superior orders, the Governor was not at liberty to permit any of the nobility, and but few of the gentry, to come into the castle to see his Majesty, except upon Sundays, to the sermon in St. George's chapel, where the chaplain to the Governor or garrison preached. Notwithstanding the harshness of these orders, Colonel Whitchcote behaved with such marked respectful tenderness to

*On sale by H. RODD, }
9, Great Newport-street. }*

N

*On sale by H. RODD, }
9, Great Newport-street. }*

his royal prisoner, that his Majesty took particular notice of him ; more especially as the soldiers in garrison there were careful to give him no offence, as had been customary in other places : a degree of delicacy most evidently to be attributed to the respectful example and enforcement of the Governor."

CXXXIX.

WILLIAM THE THIRD, KING OF ENGLAND.

Canvas, 50 inches by 40, in his robes, down to the knees, holding his hat in his hand : from the same collection as No. CXXXIV.

CXL.

WILMINGTON, SPENCER COMPTON, EARL OF.

Canvas, 64 inches by 44, whole length, attired as a Cupid, leaning on a pedestal, on which is a quiver full of arrows, a spaniel dog by his side : painted in the style of Wissing. On the picture is written "Spencer Compton, afterwards Earl of Wilmington:" in a gilt frame.

Son of James Compton, third Earl of Northampton, who died 1681, by his second wife, the Lady Mary Noel, daughter of Baptist Noel, Viscount Campden ; chosen Speaker of the House of Commons during several Parliaments ; created Baron Wilmington, in the county of Sussex, January 2, 1728 ; and on the 14th of May, 1730, created Viscount Pevensey and Earl of Wilmington : died July, 1743.

CXLI.

WILSON, THOMAS, D.D. AND MRS. MACAULEY.

Canvas, 50 inches by 40, in a clerical dress, sitting at a table with Mrs. Macauley, their hands pointing to a passage in a book lettered "Macauley's History." Painted by Wright, of Derby.

** There is an engraving from this picture, without the portrait of Mrs. Macauley, by Sherwin. From the collection of Dr. Wright, of Lichfield.

Son of the pious Thomas Wilson, Bishop of Sodor and Man ; born 1703 ; was Rector of St. Stephen's, Walbrook, forty-six years, and published a work in quarto entitled "The Ornaments of Churches considered," and a pamphlet entitled "Distilled Liquors the Bane of the Nation," and died 1784. His warm patronage of the celebrated female historian Macauley, to whom, while living, he erected a statue in his church, is well known.

*On sale by H. RODD, }
9, Great Newport-street. }*

CXLII.

WOLSEY, THOMAS, ARCHBISHOP OF YORK, AND CARDINAL.

Pannel, about 25 inches by 20, profile, in his Cardinal's dress, holding a scroll in his hand: a curious picture of the time.

Prime Minister to Henry the Eighth; born 1471. He was the patron of learned men; a judge and munificent encourager of the polite arts; and many remains of his magnificent ideas in architecture still exist. He was founder of Christ's College, Oxford, and a school at Ipswich. Died November 29, 1530, and was interred in the Abbey at Leicester.

CXLIII.

WYNDHAM, MR. PERCY.

Canvas, 30 inches by 24, in a plain dress; by Hoppner.

CXLIV.

YOUNGE, ANNE, LADY HOWARD, WIFE OF SIR WILLIAM, BART.

Canvas, 50 inches by 40; Companion to Lady Mary Howard, see No. CXXXIV, in a white satin dress, leaning on a pedestal, and painted by the same master.

Was second wife to the Rt. Hon. Sir William Younge, Bart.; married September 14, 1729; daughter and coheirress of Thomas Lord Howard, of Effingham, by Mary, daughter of Rush Wentworth, Esq., by whom she had two sons and six daughters: 1. Anne; 2. Louisa, wife of Dr. Charles Howard, Dean of Exeter; 3. Sir George, his successor; 4. Howard, who died young; 5. Charlotte, wife of James Stuart Fulke, Esq.; 6. Amelia, wife of Sir Edward Lloyd, Bart.; 7. Julianna, wife of William Sandford, Esq.; 8. Sophia. Died 1775.

On sale by H. RODD, }
9, Great Newport-street. }

PORTRAITS OMITTED.

CXLV.

ALBEMARLE, GEORGE KEPPEL, EARL OF.

Canvas, 30 inches by 24, own hair, sash and gorget, gilt frame.

*. There is a print which corresponds with the above picture, engraved by Fisher.
 Son of William Anne, the second Earl, by his first wife, Anne Lennox, daughter of the Duke of Richmond; born April 8, 1724; married, April 20, 1770, Anne Miller, daughter of Sir John Miller, Bart., by whom he had one son, who succeeded him in his title. His Lordship died Oct. 1772.

CXLVI.

ANNE, QUEEN OF ENGLAND.

In red undress, hair hanging loose; a Miniature, by Bernard Lens.

CXLVII.

ANNE, QUEEN OF ENGLAND.

Canvas, 50 inches by 40, when Princess, sitting on a bank; by Wissing.

CXLVIII.

BURTON, HEZEKIAH, S.T.P., CANON OF NORWICH.

Canvas, 30 inches by 24, painted by Mrs. Beale.

*. There is an engraving from this picture, by Robert White, prefixed to his Sermons.
 Fellow of Magdalen College, Cambridge, and tutor there; made Chaplain to Lord Keeper Bridgeman in 1667, who presented him to a Prebend's stall at Norwich. Doctor Burton, who was a man of great prudence, moderation, and sweetness of temper, was snatched from the world when he was capable of doing most good in it, and when his incessant labours and exemplary piety promised a great deal. His friend, Dr. Tillotson, who well knew the value of his writings, published two volumes of his Discourses: he died 1681.

*On sale by H. RODD, }
 9, Great Newport-street. }*

*On sale by H. RODD, }
 9, Great Newport-street. }*

CXLIX.

CHARLES THE SECOND, KING OF ENGLAND.

Canvas, 44 inches by 36, sitting in his robes, hand resting on a baton, pillar in the background; in the manner of Ryley, from the same collection as No. XXI.

CL.

MARLBOROUGH, JOHN, DUKE OF.

Canvas, 54 inches by 43, on horseback, battle in the distance: painted by Wyck.

CLI.

MARLBOROUGH, JOHN, DUKE OF.

A beautiful little Miniature, blue riband, &c.

CLII.

MUNDEN, MR.

Canvas, 30 inches by 24, holding in his hand a paper; probably by Hoppner: in a gilt frame.

CLIII.

ORANGE, MAURICE, PRINCE OF.

Pannel, 26 inches by 20, in armour, embossed with flowers of gold, &c.

CLIV.

PRIESTLY, JOSEPH, LL.D.

A Profile Medallion Bronze, from the collection of the late Sir M. M. Sykes, Bart.

CLV.

RUBENS, GROTIUS, LIPSIUS, &c.

Canvas, 5½ feet by 4½, in conversation at a table, a bust of Seneca, &c. in the background, in a gilt frame: a very excellent copy of the celebrated picture by Rubens. Formerly at Wanstead House.

On sale by H. Rodd, }
9, Great Newport-street. }

O

CLVI.

SHENSTONE, WILLIAM, POET.

CANVAS, ABOUT 5 FEET BY 4, WHOLE LENGTH FIGURE, RESTING AGAINST A PEDESTAL, IN A MORNING DRESS, BY HIM A FAVOURITE GREYHOUND; VIEW OF THE LEASOWES, WITH HALES OWEN STEEPLE, AND OTHER OBJECTS, IN THE DISTANCE: A VERY FINE ORIGINAL PICTURE, BY WILSON, IN A CARVED AND GILT FRAME.

* * * The above picture was formerly in the possession of Robert Dodsley, Bookseller, of Pall Mall, to whom Shenstone inscribed a natural bower of almost circular oaks, in the grounds at the Leasowes, in the following manner:—

“Come then, my friend, thy sylvan taste display;
Come, hear thy Faunus tune thy rustic lay;
Ah! rather come, and in these dells disown
The care of other strains, and tune thine own.”

CLVII.

VALENTINOIS, DIANA OF POICTIERS, MADAME DE.

Pannel, 16 inches by 10, in a black dress, necklace of pearls, putting a ring on her finger: most highly finished. On the back is the following inscription:—

“Remarkable in the history of France is that of John de Poitiers, Count de St. Valiere, convicted of being an associate in the conspiracy of the constable of Bourbon against Francis the First, condemned to lose his head at Lyons: the fear, and other violent passions with which his mind was distracted, had such an effect, that the officers of the prison took him next morning for another man: but this was not all; for he was seized with so violent a fever, that notwithstanding his daughter Diana, famous by the name of Duchesse de Valentinois, had, by her charms and rare beauty, procured his pardon from the King, no remedies were able to save his life, though all that physic could dictate was used.”—*Vid. Puffen. Grot. et Al.*

PICTURES.

WHEATLY.....Scene in Shakespeare's Henry the Fourth, Prince Henry taking the Crown, gilt frame, 5 feet by 4½.....£15
PASSINELLI....Female Saints extracting the Arrows from St. Sebastian, a finely coloured and well executed picture, in a fine gilt frame, 5½ feet by 4½.....£15

On sale by H. RODD, }
9, Great Newport-street. }

- PASSINELLI A curious Allegorical Subject, representing a Female seated in a Chair, an old Man asleep in her Lap, a young Man asking her who three Persons are who are coming down a Hill. He says,
 " Madam, be pleased to tell who that may be
 So sweetly resting there upon your knee?
 And to resolve me who are yonder three
 That come down from the castle, as you see?"
 She answers,
 " The first my brother is, by father's side;
 The next, by mother's, not to be denyde;
 The next my own sonn is, by marriage right,
 And all sonns by my husband, this same knight."
 Oblong, 30 inches by 24, painted in the reign of James I. £4 4s
- SPAGNIOLETTI A finely painted portrait of St. Peter, holding Scrolls in his Hand, 3 feet 5 inches by 2 feet 5 inches £4 4s
- HOGARTH Twelve original and very spirited Sketches, being a Series of Illustrations to Hudibras, differing from those engraved after the same Master, on pannel, in flat gilt frames £42
 Twelve, the Set of Idle and Industrious Apprentices, after Hogarth, by Coypel, 1 foot 8 inches by 2 feet 3 inches £26 5s
- COLLINS Dead Game, &c. in an oak-leaved pattern frame, 3 feet by 2½ feet. . £3
- AMICONI Lot and his Daughters, 3 feet 9 inches by 3 feet 6, in a carved gilt frame £6 6s
- LOTENS A Woody Landscape and River Scene, with Figures, in the Environs of a City in Holland, in a gilt frame £6 6s
- G. ROMANO The Education of Bacchus, after, in a gilt frame, 3 feet 10 inches square £4 4s
- ZUCCARELLI A Landscape, with Peasants milking Cows, in the style of, 3 feet 2 inches by 3 feet £2 10s
- VANDYKE A whole length Portrait of a General, time of James the First, a spirited Sketch, 12 inches by 8, in a gilt flat frame £5
- ITALIAN Virgin and Child, with the Infant St. John, a very curious early Picture, on very thick pannel, 30 inches by 24 £9
 A Ceiling, representing the Hours preparing the Chariot of Day for Apollo, &c., about 12 feet by 7, very finely executed, and in excellent preservation, on a roller, well adapted for a summer-house . . . £10
- G. NETSCHER Jupiter and Calisto, a finely coloured Picture, 20 inches by 17, in a carved and gilt frame £4 4s
- BOTH A Landscape and Figures, in the style of, 30 inches by 24, in a fine carved and gilt frame £8 8s

On sale by H. RODD, }
 9, Great Newport-street. }

- SHEPHERD.....Views of Berry Pomeroy, in Devonshire, belonging to the Duke of Somerset, *very finely drawn in water colours, 23 inches by 18, in a capital gilt frame, and glazed*.....£7 7s
 _____ View of Tiverton, in Devonshire, *companion to the preceding*...£7 7s
- BELANGER.....A Set of Four capital Drawings, in Body Colours, Views in Italy, in the style of, *30 inches by 20, newly framed and glazed*.....£8 8s
- HONTHORST...Portrait of a little Girl, whole length, time of Charles I.....£5
- M. GARRARDS...Portrait of a little Girl, time of James I, dressed in green, with open lace ruff, holding flowers in her lap; by her is another Girl, as her attendant, *very curious*.....£5
- J. V. L.....Miniature Portrait, in Oil, of an Admiral, about 1640, most beautifully finished, and with the effect of Rembrandt, painted on silver, *in an exquisite carved frame, representing Tritons blowing trumpets issuing from fruit and flowers on each side, the whole joined by a crown of laurel which hangs over his head; under him is a vessel with coat of arms on it*.....£10 10s
- ITALIAN.....A Drawing in Body Colours, a Lady at her Toilette, her Suitor and Attendant by her, *in a black and gilt frame, with plate glass, 2 feet 8 inches by 2 feet 7*.....£5
- ORIENTAL.....Three highly finished Miniatures, in Water Colours, of Emperors of the East, *framed and glazed*.....£2 12s 6d
- V. DER NEER...A Moonlight, small and spirited, *in a gilt frame*.....£8 8s
- BEGA.....An Interior, three Boors Drinking and Gambling, *in a carved and gilt frame*.....£3 3s
- M. GARRARDS...A little Girl, most superbly habited in brocade and lace, whole length, holding in one hand a shuttlecock, in the other a battledore; on it is written "In her 3d year, 1562," which has been apparently altered from 1600; *canvas, 3 feet 8 inches by 2 feet 9, very curious*...£8 8s
- ** The above picture has "Elizabeth, daughter of James the First," written on the back, and is probably her.
- VERTUE.....A fine Drawing in India Ink, representing the Marriage of Henry the Fifth with Catherine of France, in the Cathedral of St. Peter's, at Troyes, the King and Queen of France, Duke of Burgundy, and Nobility attending, *26 inches by 22, framed and glazed*.....£7 7s
- ** A highly interesting historical Drawing, from the collection of the late Sir M. M. Sykes.
- P. VAN DYCK....A whole length Portrait of a Youth, leaning against a pillar, dressed in light green, hat and feather in his hand, sword by his side, &c., *on pannel, in a finely carved open-work frame, supposed to be one of the Pembroke Family*.....£20

On sale by H. RODD, }
 9, Great Newport-street. }

MARBLE BUSTS.

I.

CICERO, MARCUS TULLIUS.

ADMIRABLY EXECUTED IN WHITE MARBLE, BY AN OLD ITALIAN HAND: FROM THE COLLECTION OF THE LATE THOMAS BRYAN RICHARDS. £21.

II.

HANDEL, GEORGE FREDERICK.

THE ORIGINAL TERRA COTTA BUST BY ROUBILIAC, FORMERLY IN THE POSSESSION OF MR. BARTLEMAN. £35.

An illustrious master in music, born at Hall in Upper Saxony, Feb. 24, 1684. His compositions, particularly his oratorios, have been repeatedly performed to the present day with uninterrupted success and unrivalled glory. Died 1759, and was buried in Westminster Abbey, where, by his order and at his own expense, a monument is erected to his memory.

III.

HOMER.

A CAPITAL ITALIAN EXECUTED BUST, STANDING 28 INCHES HIGH, FORMERLY IN THE POSSESSION OF THE LATE THOMAS BRYAN RICHARDS. £31 10s.

IV.

SENECA.

A WELL EXECUTED OLD ITALIAN BUST: FROM THE SAME COLLECTION AS THE HOMER. £21.

V.

PORTRAIT OF A BEAUTIFUL FEMALE.

THE FACE VERY HIGHLY FINISHED IN WHITE MARBLE, THE DRAPERY COMPOSED OF BRONZE. £20.

On sale by H. RODD, }
9, Great Newport-street. }

P

On sale by H. RODD, }
9, Great Newport-street. }

OLD CARVED WOOD, FRAMES, &c.

- A Bracket, supported by two Mermaids, *very elegantly carved and gilt*.....£4 4s
 Ditto, supported by two Scrolls of Leaves, &c. *gilt*.....£2 12s 6d
 Ditto ditto, *painted*.....£1 11s 6d
 Ditto, a pair smaller, *gilt*.....£3 13s 6d
 A Press for a Library, standing from the bottom 3 feet, in oak, with a Drawer, the four corners supported by Lions, &c. *very old, and in fine preservation, will stand on a table without inconvenience*.....£3 13s 6d
 Ditto, standing on 4 legs, carved in oak, 4½ feet high.....£4 14s 6d
 A Pediment for a Door, very finely carved in oak, 4 feet long, a coronet supported by two boys over the initials of a name, various other scroll and ornamental work..£4
 Six antique high-backed Chairs, very finely carved in walnut-tree, *perfect, but want new seats*.....£7 7s
 An Ivory Dressing or Work-Box, *very beautifully cut, 15 inches by 11*.....£3 3s
 A Tortoiseshell ditto, silver corners.....£1 11s 6d
 A Marqueterie ditto, beautifully inlaid.....£2 12s 6d
 A Marqueterie Tea-caddy.....£1
 A Set of Backgammon Men, with the Dice Boxes, *very old and curious*.....£1 11s 6d
 A very excellent carved Frame for a Glass, roses and flowers, &c. *painted black, 16 inches by 13*.....£4 14s 6d
 Ditto, representing Rocky Scenery, Otters coming in at the sides, &c. *for a chimney, painted green and other colours, about 4 feet by 2½*.....£1 11s 6d

☞ A variety of other Frames, some curiously carved.

- A curious Jug of brown Earthenware, with a high Neck, 1587; on it are Figures representing the History of Susanna, *formerly in the possession of the late Octavius Gilchrist, Esq.*.....£2 12s 6d
 A ditto of white Earthenware, very long and narrow, 1573, the Spread Eagle, and Arms of some of the Continental States, &c.....£1 5s
 A ditto, blue and white, with Lions' Heads on it, *curious*.....£1 5s
 A ditto ditto, smaller.....15s
 A ditto ditto, with the Crown and A. R. (Anna Regina) in the front,....10s 6d

On sale by H. RODD, }
 9, Great Newport-street. }

STAINED GLASS.

- Two Coats of Arms of the Family of Hyde, *very antient, a little damaged*....£1 10s
 A Window, by Pearson, after a design by Westall, representing the Queen of Edward the Fourth with the young Prince taking refuge in Westminster Abbey, 5 feet by 4 feet 2 inches, *very finely executed; one pane broken and two a little cracked, can be easily repaired*.....£21

ILLUSTRATED BOOKS, &c.

- PENNANT'S HISTORY OF LONDON, 4 vol. 1805, ILLUSTRATED WITH ABOUT SIX HUNDRED PORTRAITS, VIEWS, MONUMENTS, ANTIQUITIES, &c. including several very rare Prints; particularly *Mrs. Elinor Gwynne, by Valck; Dr. Chambers, by Hollar; Duke of Monmouth, by Vander Vaart; Duke of Buckingham, by Dellst; Duke of Monmouth, by Blooteling; Elinor Gwynne and her two Sons, by Thompson; Titus Oates, by ditto; the two Tradescants, by Hollar; several very fine by Houbraken, Vertue, &c.*; including also a *Set of Smith's Views in London and Westminster, Plates to Dugdale's St. Paul's, and other Sets; the 2 first volumes bound in russia, the other 2 unbound, in portfolios, large paper, folio* £47 5s
 LORD ORFORD'S ROYAL AND NOBLE AUTHORS, 4to, PRINTED AT STRAWBERRY HILL, INLAID IN ATLAS FOLIO, and illustrated with numerous Prints, many of them of great rarity: *George Monk, Duke of Albemarle, battle in the distance, by Loggan (sold lately at Sir M. M. Sykes's sale for £16); Fane, Earl of Westmoreland, by Williamson; Henry Booth, Earl of Delamere, by Smith; James, Earl of Derby, by Blooteling; W. Herbert, Earl of Pembroke, by Pass, &c. &c.*; the whole in a portfolio.....£30
 THE CHURCH HISTORY OF THE WHOLE WORLD, describing the different Manners and Customs, by Cornelius Hazart, in Dutch, 4 vol. folio, containing an immense number of Historical Engravings and Portraits, by Lommelin, Neefs, &c.: among them the very rare Prints of the Jesuits, *Garnet, Campian, Morse, Parsons, &c.*; the *Execution of Mary Queen of Scots, Campian, Briant, &c.*, all good impressions; in vellum, fine clean copy.....£5 15s 6d
 Ellis's Specimens of the Early English Poets, the first edition, very scarce, illustrated with upwards of 40 Portraits, and an additional Index, unbound.....£4

On sale by H. RODD, }
 9, Great Newport-street. }

Vocal Poetry, or a Select Collection of English Songs, by the celebrated English Poets; to which is prefixed an Essay on Song Writing, by John Aikin, M.D. 1810, *uncut, illustrated with upwards of 50 Portraits, unbound*.....£3 13s 6d

British Bards, or a choice Collection from the Works of the principal Poets in England, from Spenser to Cowper, 12mo, 1820, *uncut, illustrated with upwards of 20 Portraits*.....£1 11s 6d

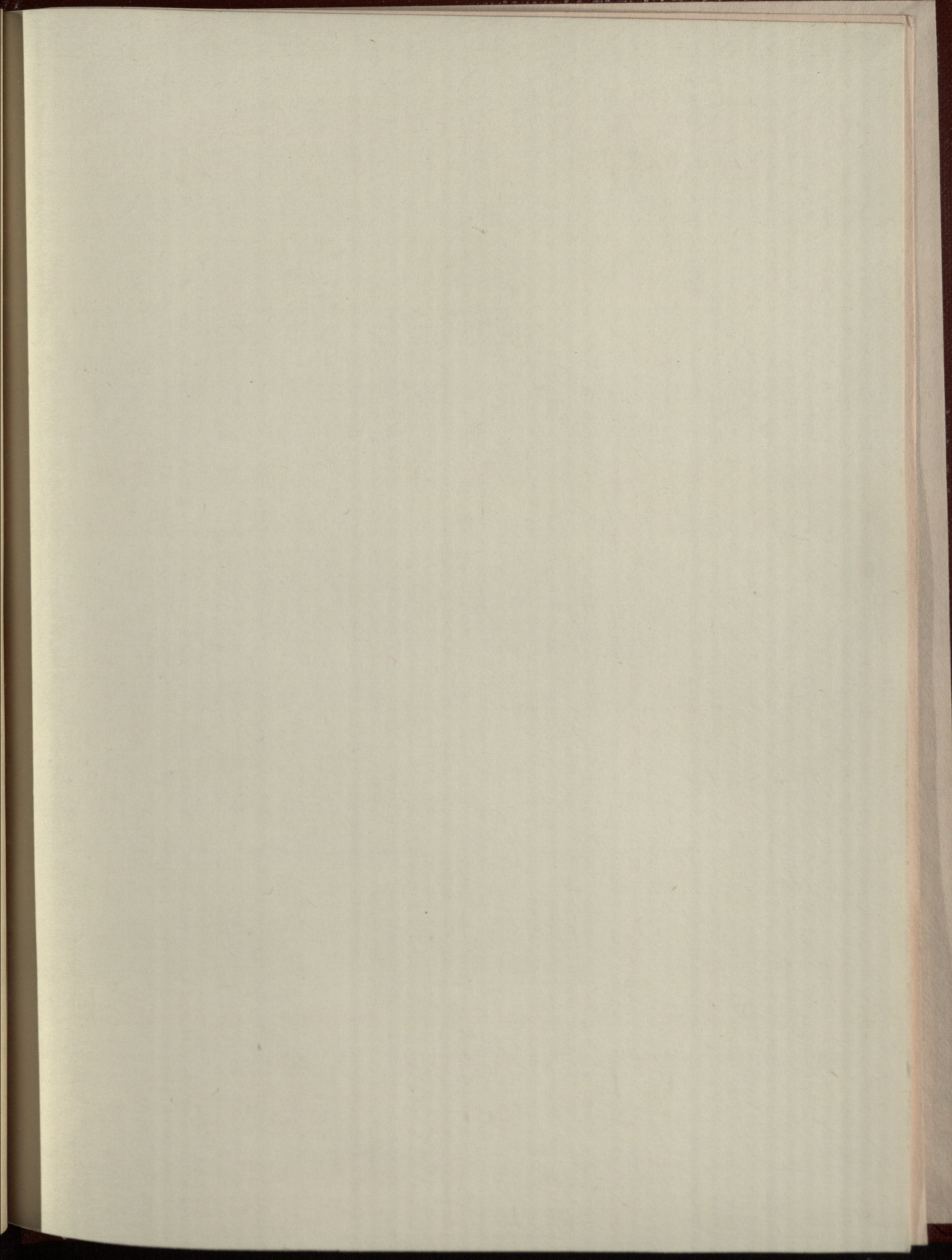
Splendid Portraits of Royal Personages, consisting of Fifteen Engravings in Mezzotinto of Queen Elizabeth, James the First, Prince Henry, Charles the First, &c., *the whole engraved from prints of the greatest rarity, fine impressions, half bound in red, folio*.....£3 3s

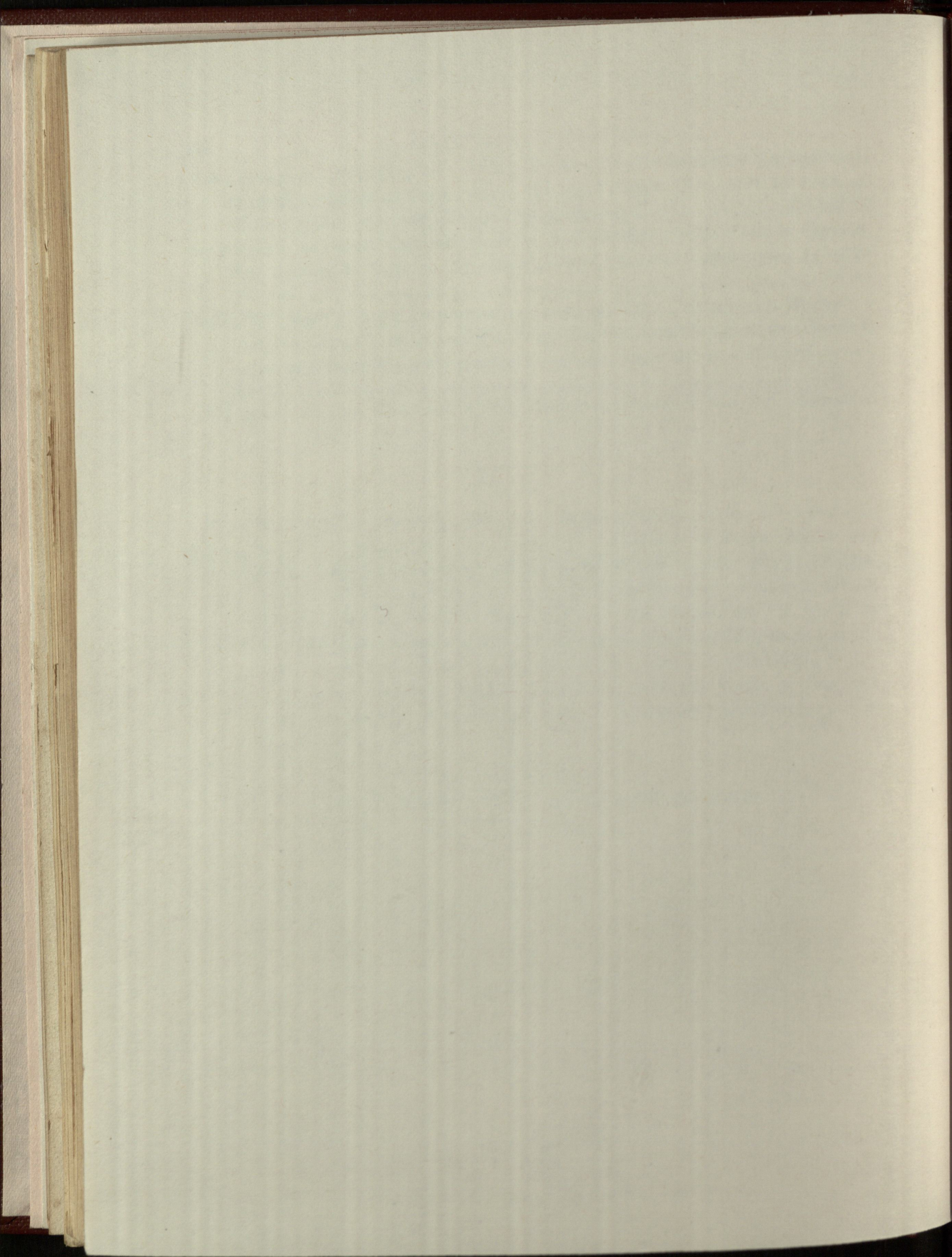
Lord Byron's English Bards and Scotch Reviewers, *inlaid in 8vo, for illustration* £1 1s

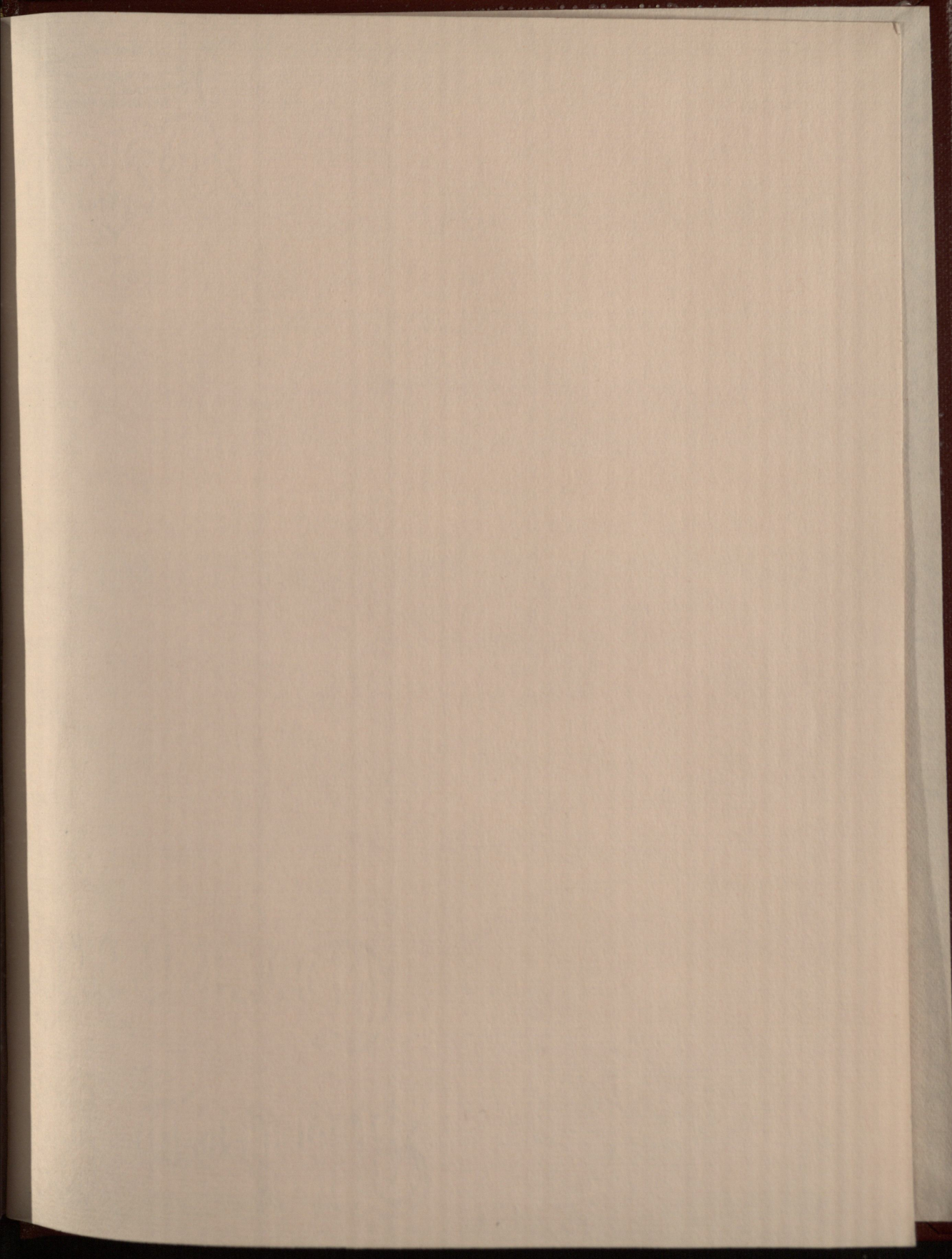
H. RODD has constantly on sale a very large collection of Engraved Portraits, from the earliest Period to the present Time, consisting of *Kings, Queens, and Royal Families, Nobility, Gentry, dignified and inferior Clergy, Judges, Lawyers, Military and Naval Heroes, Literary Characters, Painters, Artists, Mechanics, Ladies and Gentlewomen, Remarkable Persons, &c.*; in which are to be found many of great rarity, and by the most eminent Engravers: among them are the Works of the *PASSES, ELSTRACKE, HOLLAR, MARSHALL, FAITHORNE, WHITE, VERTUE, &c. &c.*, besides many after the Works of *VANDYKE, LELY, SIR JOSHUA REYNOLDS*, and others, to which large additions have lately been made.

PICTURES FRAMED, LINED, CLEANED, AND REPAIRED.











Bound by MARCH 1979
HMSO RPH.



