

AL-804 (FAA)

BALTIMORE, MARYLAND

ATIS
115.1 127.8
BALTIMORE TOWER
119.4 257.8
GND CON
121.9
CLNC DEL
118.05



FIELD ELEV 324 Δ
143

39°12'N

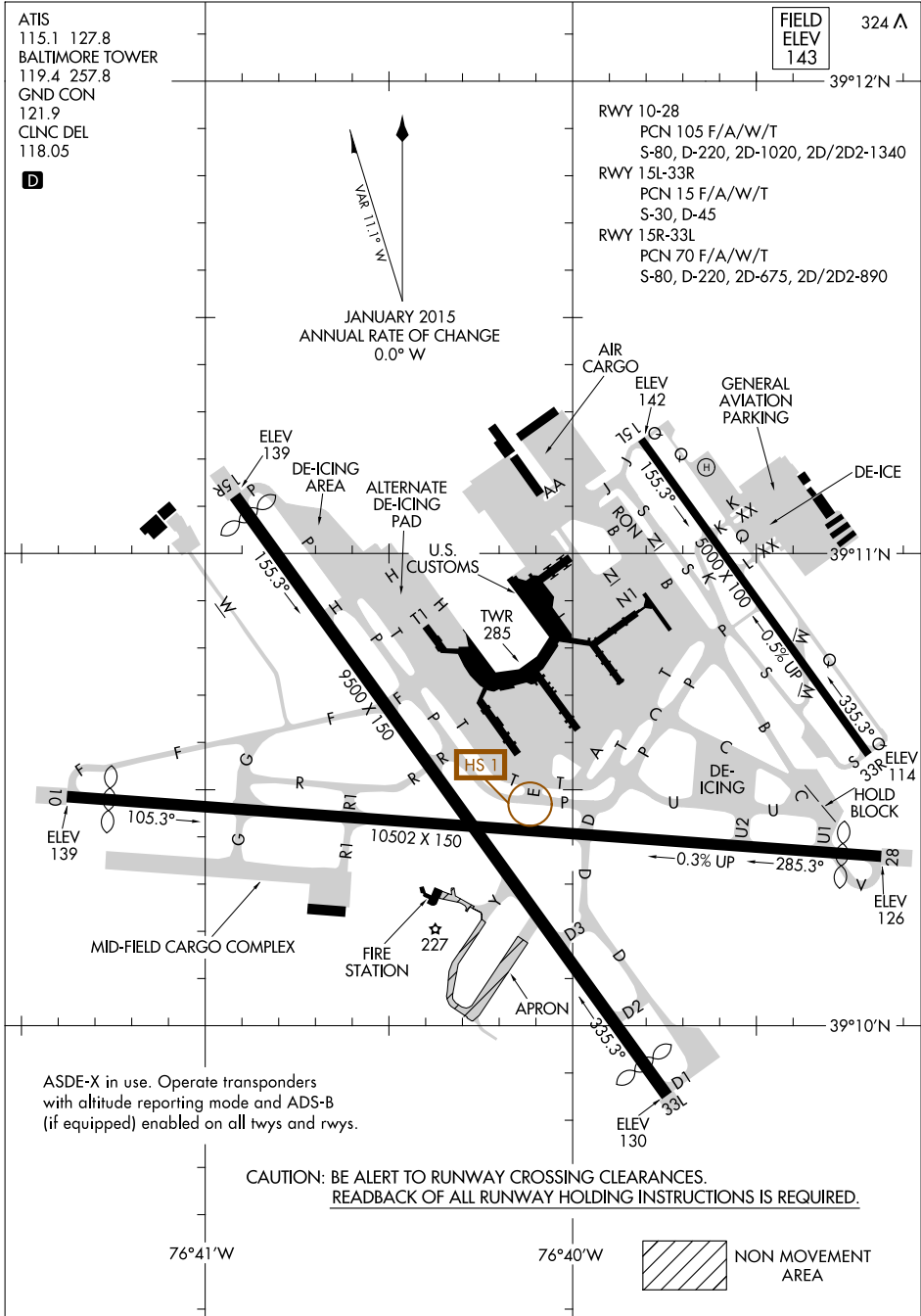
RWY 10-28
PCN 105 F/A/W/T
S-80, D-220, 2D-1020, 2D/2D2-1340
RWY 15L-33R
PCN 15 F/A/W/T
S-30, D-45
RWY 15R-33L
PCN 70 F/A/W/T
S-80, D-220, 2D-675, 2D/2D2-890

JANUARY 2015
ANNUAL RATE OF CHANGE
0.0° W



NE-3, 07 JAN 2016 to 04 FEB 2016

NE-3, 07 JAN 2016 to 04 FEB 2016



ASDE-X in use. Operate transponders with altitude reporting mode and ADS-B (if equipped) enabled on all twys and rwys.

**CAUTION: BE ALERT TO RUNWAY CROSSING CLEARANCES.
READBACK OF ALL RUNWAY HOLDING INSTRUCTIONS IS REQUIRED.**

76°41'W

76°40'W



NON MOVEMENT AREA