

Historic, archived document

Do not assume content reflects current scientific knowledge, policies, or practices.

6221

BANCROFT'S Beautiful Flowers for 1923

Library and System
Herbarium Collection
March 2 1925
U. S. Department of Agriculture



CANNAS WITH BORDER OF COLEUS

See the beautiful effect of mass planting

For Prices see Pages 13 and 15

JOSEPH BANCROFT & SON

Lock Box 35

Cedar Falls, Iowa

Telephone 44

TO OUR CUSTOMERS

THIS IS A CATALOGUE OF DEPENDABLE THINGS

We do not sacrifice quality for price. You cannot get something for nothing. Our rapidly growing trade is with the class of people who are willing to pay a reasonable price for merchandise of quality. We do business on this principle—one good plant that grows and blooms is worth half a dozen that are grown so crowded and weak that they never make a good plant, no matter how you pet and fuss with them.

Our list is not as large as some, but you will find that we have discarded the varieties that are not suitable here and list only those we know will prove satisfactory to you.

SERVICE

Service means quality of goods plus the ability to care for your orders in such a manner that you will come again—Our ever-increasing trade shows that we have both and we are giving them to our customers.

Any order that does not prove satisfactory in every way we are ready and glad to make right—if proper claim is made within a reasonable time after time of shipment.

Errors. If goods received are not as expected compare with order, read Catalogue carefully, and if we are in the wrong, write us at once. Every just complaint will have immediate attention.

Remit by bank draft, express order, postoffice order or registered letter.

To Responsible Parties goods will be sent on approval.

Plants by Express. Have your plants, shrubs, etc., sent by express when you can possibly do so. Under the new ruling they go at special rates in Iowa, making the cost very reasonable. We guarantee safe arrival of all goods by express.

NOTICE. Plants by Mail. Add 10c per dollar on all orders for plants to go by mail. Prices given in this catalogue are not prepaid. Postage or express is to be paid by purchaser. All large plants must be sent by express.



POINTS ON THE CULTURE OF FLOWERS

Treatment of Plants Received by Mail. If plants are wilted immerse them in water, without removing the packing material and allow them to remain for half an hour. Then unpack and set in small pots in rich fibrous loam, shade from the sun and sprinkle foliage every day being careful not to overwater the roots until the plants begin to grow, after which they may be shifted to larger pots if necessary.

Soil in Which to Pot Plant. The best soil for most plants is composed of two-thirds good garden soil, and one-third well-rotted manure, well mixed up together. If not naturally sandy, it is well to add some sharp sand.

Watering. Whenever the plants are dry, water so that the earth will be saturated, and no more. No water should be allowed to remain in the saucers under the pots except in the case of aquatic plants. Soft-wooded plants require much more water than hard-wooded ones.

Drainage is of the utmost importance. Every large pot should have at least an inch of broken pot, shredded moss or charcoal in the bottom.

Sprinkling. All plants are benefitted by liberal spraying two or three time a week on the under side of the leaf.

Air. Ventilate well every day when air above freezing point can be admitted. Do not allow cold air to blow directly against plants.

Insects. One of the most disgusting of these is the Scale which attacks the Ferns, Palms, Ivies, etc., lodging on the stem and under side of leaf. There is no remedy but scraping off and destroying. A severe scrubbing with an old tooth brush and soap will remove the scale. Mealy bugs lodge in the axils of the leaves and are easily removed by using an old tooth brush. Red spider shows itself in a brown died condition of the leaves and is an indication of too dry an atmosphere. Sponge, sprinkle or wash the leaves often and thoroughly. The Green Fly or Aphis, is best destroyed by tobacco smoke, if the smoke can be confined about the plants; otherwise a tobacco tea, made by steeping one pound of tobacco stems in four or five gallons of water, can be used. Dip the plants in the liquid, or sprinkle them thoroughly with it; or moisten the plants with water and sprinkle tobacco dust over them, letting it remain until the usual watering washes off.

Worms in the Soil. Lime water will usually expel them without injury to the plant, one part lime to twenty parts of water, and when clear, give one or two waterings.

Mildew. A whitish or moldy appearance of the leaves. It is caused by a sudden change in the atmosphere from great heat to cold, or by a draft from open windows or door. At first appearance dust them with sulphur.

PRICE OF INSECTICIDES

Tobacco Dust. 20c per pound.

Tobacco Whale Oil Soap. 20c per ½-lb pkg.

Nicotine Paper. 8c per sheet, 4 sheets for 25c.

Nicotine Extract. 60c per ½ pint bottle.

If by mail add 5c per lb.

CUT FLOWERS

In design work and loose cut flowers we are better than ever prepared to care for your wants. With 55,000 feet of glass devoted to flowers, our excellent facilities for storing and shipping, we are sure that you cannot do as well elsewhere. We carry on hand the largest stock of seasonable cut flowers in Central Iowa, even in the largest cities few firms carry the stock that we do. Frequently persons are undecided what to order and at such times you may leave the selection to us, stating what you wish to use them for and the price you wish to pay.

WHEN TO ORDER. Give us as much time as possible. Do not be afraid to order even a week or two ahead. You are sure of getting just what you want. Where an order is not sent in until the last thing, we sometimes have to substitute either in kind or color of flower wanted.

HOW TO ORDER. All customers will please notice that orders for early morning shipment must be in the night before. Our postoffice closes at 7 p. m. If you are not sure that your order will reach us before that time, it is safer to wire us. Telephone messages can be sent after 8 p. m. at considerable reduction. It is always best to telephone or telegraph your order when time is limited, as you are then sure of reaching us on time. **Don't trust the mails;** trains are often late and we often do not receive orders on time.

SUNDAY MAIL. If your order is sent by mail for Monday shipment, be sure and affix a special delivery stamp if letter is liable to reach here on Sunday, as we do not receive all our Sunday mail until Monday morning.

FLOWERS BY EXPRESS. All cut flowers, designs, etc., packed to carry long distance safely, either winter or summer.

FLOWERS BY MAIL. On request we often send small boxes of loose cut-flowers by mail, as a rule they reach their destination all right, especially carnations, but much prefer sending by express, as flowers carry better and cheaper. If orders are to go out by mail, add 20c postage which includes special delivery stamp.

TERMS AND CONDITIONS. Cut flowers are strictly cash, and payment must be made immediately on receipt of flowers. We seldom send C. O. D. It often embarrasses those who buy, and it is a needless expense.

COMPLAINTS to be allowed should be made immediately on receipt of flowers.

RESPONSIBILITY. While we exercise the greatest care to have all flowers reach their destination on time, and will not ship unless we are reasonably sure **they will reach you on time,** we positively will not be responsible for delays in trains, wrecks, or express agents' negligence. **Should your flowers reach you too late, accept them under protest, do the best you can with them. If for a funeral, lay them on the grave, we will share the loss with you and take care of any claim against express company.**

OUR SHIPPING FACILITIES. The fact that the great harvester companies have their general agencies in this city is in itself a sufficient guarantee that there are none better in Northern Iowa.

Flowers for the House the Season Through

You enjoy having flowers in the home and having them on the table when you have a few friends in; why not have them oftener? Part of the year you cannot grow them, but we make it easy for you to have them whenever you like, at a small cost. **Our \$1 and \$2 boxes of cut flowers sent prepaid anywhere is always suitable whatever the occasion.**

A BIRTHDAY

Have you a friend you would love to remember, then **say it with flowers** the most beautiful of remembrances. Our assorted boxes, \$2.00 and up, are very appropriate—say when they should reach destination.

For the home, for a party, for a birthday, or for a sick friend. Just mail us your card and with the address of the person who is to receive it, and we will do the rest. We know you will be pleased.

VERY IMPORTANT

How to Keep Your Cut Flowers
All design work. Leave in the boxes and set in a cool cellar until ready to use.

Loose Flowers. Remove from boxes at once, clip the ends of stems and put them in water and set in cellar, using deep vase with plenty of water at bottom, and see that the stems are down in the water. By securing loose flowers early and keeping them 12 to 24 hours before using, you double the value of the flowers.



Butterfly Roses

Assorted Boxes of loose cut flowers and greens, suitable for any occasion, at \$1, \$2, \$3, \$5 and \$10. Try one of our \$1 boxes for your sick friends. It will surprise and please them, and nothing will cheer them more. Sent prepaid anywhere for \$1 and upward.

HOLIDAYS

Owing to the extraordinary demand, it is sometimes impossible to give you exactly the kind of flowers ordered. We do our best, but our customers will find we can give better values in mixed boxes of our own selection, \$2, \$3, \$5, \$10.

DECORATION DAY

One of the hardest days of the year to supply the demand. If the weather is hot and damp, it is a time of poor quality and high prices. We shall endeavor to bill all stock at most reasonable prices, according to quality. Prices from May 28th to June 1st will be about as follows:

Carnations, assorted colors only and our selection, \$1.50 and \$2.00 per dozen; **Roses**, \$1.00, \$1.50 and \$2.00 per dozen, extra fancy, \$3.00 and \$4.00 per dozen; **Mrs. Russell and Columbia**, \$3.00 and \$4.00 per dozen, extra long, \$6.00 per dozen; **Jasmines**, 60 cents per dozen, \$4.00 per 100; **Gladiolus**, \$3.00 and \$4.00 per dozen; **Lilies**, \$4.00 per dozen. Count of lilies includes buds.

MOTHER'S DAY

Usually observed in all churches the second Sunday in May. Wear a flower for mother's sake, a white one for the mother that is dead, and a colored one for the one who is living.

Carnations. Assorted colors only, and our selection of color, \$2.00 per dozen. Extra fancy, \$3.00 per dozen.

Roses, \$1.50, \$3, \$4 per dozen. Short stemmed roses, assorted colors, \$1.50 doz.

Special Notice. All carnation orders for Mother's Day are taken by us with the distinct understanding that part Roses may be substituted for carnations if necessary.

FLORIST TELEGRAPH DELIVERY

We are members of Florist Telegraph Delivery Association of America
Flowers Delivered to Any
Part of the World

We have a representative in, or near every city, town or hamlet, who will fill and deliver anywhere any order, on short notice through our co-operate telegraph system.

PATRIOTIC DESIGNS

We are well prepared to handle any order for the funerals of our Soldier Dead. Any special form made up in a satisfactory manner at reasonable prices. All designs for Military Funerals are draped with finest quality red, white and blue ribbon. We quote two very appropriate and beautiful pieces.

Flag. On panel of Magnolia, \$20, \$30, \$40.

Wreath of White with Cross of Red inside wreath, \$18, \$25, \$35.

American Legion, 16 inches, \$10; 20 inches across, \$15; 24 inches, \$20.00.

In ordering always use telegraph or telephone in preference to letter where immediate shipment is desired.

SEASONABLE PRICE LIST OF LOOSE CUT FLOWERS

SWEET PEAS. Season, January 1st to June 1st, 35c per dozen, after May 1st, 50c per bunch of 25.

LILIES, Easter and Callas. Season almost the entire year, 50c each, \$5.00 per dozen. Large quantities always on hand at Easter at regular prices. All large buds count same as flowers on Easter Lilies and average the dozen, eight open flowers. Place your Easter orders early. Easter Lilies during May and June 40c each, \$4.00 per dozen.

CORSAGE BOUQUETS. Made up of assorted flowers and tied with ribbon, \$1, \$2, \$3 each.

ASPARAGUS PLUMOSUS. Sprays, 25c and 50c per dozen.

SPRENGERI. Sprays, 25c and 50c per dozen.

SMILAX. 35c per string of 4 to 5 feet; \$3.50 per dozen strings.

CHRYSANTHEMUMS. All the popular colors. Season, October 15th to December 15th. Good flowers, \$3.00 per dozen; fancy, \$4 to \$5 per dozen; extra fancy, \$6 per dozen.

MARGUERITES. In season, 35 cents per dozen.

DUTCH HYACINTHS. January 15th to April 1st, 25c each, \$3.00 per dozen.

NARCISSUS. Double and Single Yellow. Season February 1 to April 10, \$1.50 and \$2 per dozen.

Paper White. Season December 15 to February 1, \$1.50 per dozen.

THINK. Whose birthday this week or this month, then Say it with Flowers.



On all small orders to go by mail add 10% for postage.

PRICES OF LOOSE ROSES AND CARNATIONS

Below we give a table showing about what you may expect to pay at the different seasons. These prices are for the very best stock. Our Roses are the finest that grow and will compare favorably with any other firm. We believe they are better value than you will secure elsewhere. Our **Columbia** and **Premier** are wonderful values—there are none better.

	Thanks-giving	Dec. 22 to Jan. 1st	Easter	Nov. 1st to June 10th	June 10th to Nov. 1st
ROSES					
	Per Dozen	Per Dozen	Per Dozen	Per Dozen	Per Dozen
Mrs. Russel, Columbia and Premier. Price varies according to season and length of stem. Dark Pink.....					
	\$3 to \$6	\$3 to \$8	\$3 to \$8	\$2 to \$5	\$2 to \$5
Angeles. Finest white.....					
	\$2 to \$3	\$2 to \$4	\$2 to \$4	\$1.50, \$2, \$3	\$1.50, \$2, \$3
Butterfly - Ophelia (Pinkish Yellow)					
	\$2 to \$3	\$2, \$3, \$4	\$2, \$3, \$4	\$1.50, \$2, \$3	\$1.50, \$2, \$3
Crusader and Milady (Red).....					
	\$2 to \$4	\$2, \$3, \$4	\$2, \$3, \$4	\$1.50 and \$2	\$1.50, \$2, \$3
CARNATION					
White, Light and Dark Pink, Scarlet, Crimson and Variegated.					
Good grade, assorted colors.....					
	\$1.50	\$2.00	\$2.00	\$1, \$1.50, \$2	1.00
Extra Fancy Selected.....					
	\$2.00	\$3.00	\$3.00	\$3.00	\$1.50
Best Red					
	\$2.00	\$3.00	\$2.00	\$2.00	\$1.50, \$2

For Decoration Day and Mother's Day Prices See Page 2

FOR PARTIES, RECEPTIONS AND BIRTHDAY GIFTS

Loose flowers in vases or baskets are most suitable for table or room decoration. A carnation or short stemmed rose for each person where trays are passed. Where guests are seated at tables, one rose or carnation each for the gentlemen, and for the ladies, two or more tied with a dainty cord or ribbon.

PRICES OF BOUQUETS

Buttonhole. For gentlemen, Short roses, 10c each, \$1.00 per dozen; short carnations, 10c each. \$1.00 per dozen.

Buttoniere for ladies, small, 30 cents each, \$3 per dozen; larger, 60 cents each and \$1 each.

CORSAGE BOUQUETS

Large, made with shield and tied with ribbon, \$2, \$3 and \$5 each.

BASKETS

Filled with flowers very suitable for gifts, weddings and receptions. \$1, \$2, \$3, \$5 and \$10.

CHIFFONS, RIBBONS AND CORDS

We carry a full line of different styles and colors.

Chiffons and Nettings. Plain, white, pink, Nile green, lavender, purple, six inches wide, 20c per yard; 4 inches wide, 15c per yard.

Chiffon Ribbon. Eight inches wide, very fine, 30c per yard.

Ribbon. Different colors and widths. 10c, 15c, 20c, 30c and 40c per yard.

Cord with Tassels. Small, 5c each, 50c per dozen; larger, 10c each, \$1 per dozen.

DESIGNS

FOR WEDDINGS

These are hung suspended on wall above the bridal party.

Bells, \$8, \$10 and \$12.

Bow and Arrow, \$7, \$9.

Yoke, \$10.

Horseshoe, \$3, 4\$ and \$5.

Lovers' Knot, \$8.

Bouquets, hand. No. 1 as illustrated, \$5, \$6 and \$8. No. 2 as illustrated, \$7, \$8, \$10 and \$15.

Wedding Rings, \$4, \$5, \$6.

White Tissue Paper Bells, 15c, 20c and 25c each.

For Patriotic Designs

See Page 4



Wedding Bouquet No. 1



Shower Bouquet No. 2

DESIGNS FOR FUNERALS

The use of flowers as a means of conveying sympathy is undisputed. The practical experience we have daily, in the making up of various floral arrangements insures artistic as well as skillful ideas in making sprays, casket covers and funeral designs. Our aim is to fill your order as near as possible according to your wishes.

Below will be found approximate prices of all designs—any special designs will be made to order at reasonable prices.

Our New Cut Flower Catalog listing all designs separate will be sent on your request. This catalog is issued at a large expense and can only be sent on request.

Measurement of Standing Designs Includes Height

- | | | |
|---|---|--|
| Anchor Flat , 12 to 24 inches, \$4.00 to \$12.00. | Cross Maitese , 12 to 24 inches, \$4.00 to \$12.00. | Gates Ajar , 18 to 36 inches, \$15.00 to \$30.00. |
| Anchor on Base , 15 to 36 inches high, \$5.00 to \$20.00. | Cross Casket , 15 to 25 inches, \$5.00 to \$12.00. | Harp on Stand , 15 to 36 inches, \$6.00 to \$25.00. |
| Anchor on Easel , 15 to 24 inches, \$5.00 to \$15.00. | Cross and Sickle on Stand , 24 to 36 inches, \$15.00, \$20.00. | Harp Flat , 12 to 24 inches, \$5.00 to \$10.00. |
| Anchor on Easel with Scroll , 24 to 30 inches, \$15.00 and \$20.00. | Cross and Crown , 18 to 30 inches, \$10.00, \$15.00 and \$20.00. | Heart Solid , 12 to 18 inches, \$5.00 to \$10.00. |
| Anchor Chained to Standing Cross , 24 to 36 inches high, \$20.00 to \$30.00.
With Dove, \$4.00 extra. | Casket Covers or blankets used for covering the entire casket or just the lower part of the casket. Price varies according to time of year and size of cover. Small for children, \$15, \$20, \$25; large for grown persons, \$30.00, \$40.00, \$50.00 and upward. | Heart Open , 12 to 21 inches, \$5.00 to \$10.00. |
| Broken Column , 18 to 36 inches, \$10.00 to \$25.00. | Door Badge , \$2.00 and \$3.00. | Lyre on Base , 15 to 36 inches, \$6.00 to \$25.00. |
| Broken Wheel , 16 to 36 inches, \$8.00 to \$30.00. | Door Badge Wreath , \$3.00, \$4.00 and \$5.00. | Shield , 12 to 24 inches, \$6.00 to \$15.00. |
| Bible , 18 to 24 inches, \$15.00 to \$25.00. | Crescent , 12 to 21 inches, \$4.00 to \$10.00. | Shield of Galyx or Magnolia , on Easel with emblem, \$7.50, \$10.00, \$12.00 and \$15.00. |
| Crosses Flat , 12 to 36 inches, \$3.00 to \$20.00. | Crescent and Star, on Stand , 18 to 30 inches, \$8.00 to \$15.00. | Scroll , 18 to 24 inches, \$10.00 to \$18.00. |
| Cross of Magnolia, Galyx or Boxwood , 12 to 36 inches, \$3.00 to \$10.00.
With flowers, \$2.00 extra. | | Wreath of Assorted Flowers , 10 to 30 inches, \$3.00 to \$20.00. |
| Crosses Standing , 18 to 36 inches, \$6.00 to \$30.00. | | Wreath Reclining on Easel with Palm Leaves , \$2.00 extra each size. |
| Lyre Flat , 12 to 24 inches, \$5.00 to \$12.00. | | Broken Wreath on Base , 18 to 24 inches, \$8.00, \$10.00 and \$12.00. |
| Ladder Reclining , 24 to 36 inches, \$8.00, \$10.00 and \$12.00. | | Solid Wreath of Carnations with a Cluster of Roses , 15 to 24 inches, \$6.50, \$8.00, \$10.00 and \$15.00. |
| Pillows , 12 to 36 inches, \$6.00 to \$30.00. | | Wreath of Boxwood on Easel with Flowers , 15 to 30 inches, \$5.00 to \$20.00. |
| Sickle , 12 to 24 inches, \$4.00 to \$7.50. | | Wreath of All Roses or All Carnations , 12 to 30 inches, \$5.00 to \$20.00. |
| Star Flat , 12 to 18 inches, \$5.00 to \$10.00, on base \$2.00 extra. | | Wreath Reclining on Easel , 12 to 30 inches, \$5.00 to \$18.00. |
| Star and Crescent on Easel , 24 to 36 inches, \$10.00 to \$20.00. | | Wreath on Stand with Dove , 18 to 36 inches, \$10.00 to \$25.00. |
| Star and Crescent on Base , 18 to 30 inches, \$8.00 to \$15.00. | | Wreath Crescent Shape , price same as standard wreaths. |
| Sheaf of Wheat , \$1.00, \$1.50, \$2.00 and \$3.00.
With flowers, \$2.00 to \$5.00 extra. | | Wreath of Palm Leaves , \$5.00 to \$10.00. |
| Sheaf on Base standing with Sickle , 24 to 36 inches high, 18.00, \$20.00 and \$25.00. | | Wreath of Ivy Leaves, Galyx or Magnolia , leaves with Cluster Flowers, 12 to 30 inches, \$4.00 to \$15.00. |
| Sickle on Easel with Sheaf of Wheat and Palm Leaves , 24 to 30 inches, \$12.00 and \$15.00. | | Wreath of Everlasting and Magnolia Leaves are very suitable for funerals, for Easter, Christmas, Decoration and Armistice Days. We make these up with the finest stock and they are very beautiful and lasting and can be sent long distances safely by mail, \$3.00, \$4.00, \$5.00, \$7.00 and \$10.00. |
| Sickle and Sheaf on Panel of Magnolia or Galyx , 24 to 36 inches, \$12.00 to \$20.00. | | (Send for special list of Everlasting Wreaths) |
| Wreath on Easel , \$8.00, \$10.00, \$12.00 and \$18.00. | | |

"Say it with Flowers"



The Wedding!

*One Occasion When Flowers Cannot
be too Plentiful*

FLOWERS should come first in the calendar of your wedding gifts. If you know the Bride's favorite flower, the matter is easy. If you don't know her favorite, send yours. The important thing about floral wedding gifts is in their arrangement—we will be glad to give you many helpful suggestions.

ROSES

Are Distinctly Wedding Flowers

although there are many other appropriate and lovely flowers for bridal wear and home decorations. For graduations, birthdays, sick rooms, etc., you can always "Say it with Flowers" to fully express your sentiments.

BANCROFT'S

Office Phone 44

Store Phone 39

CEDAR FALLS, IOWA



FROM _____

PUT A
2-CENT
STAMP
HERE

BANCROFT'S GREENHOUSE

LOCK BOX 35

CEDAR FALLS,

ALWAYS
"Say It With Flowers"

IOWA

LODGE DESIGNS

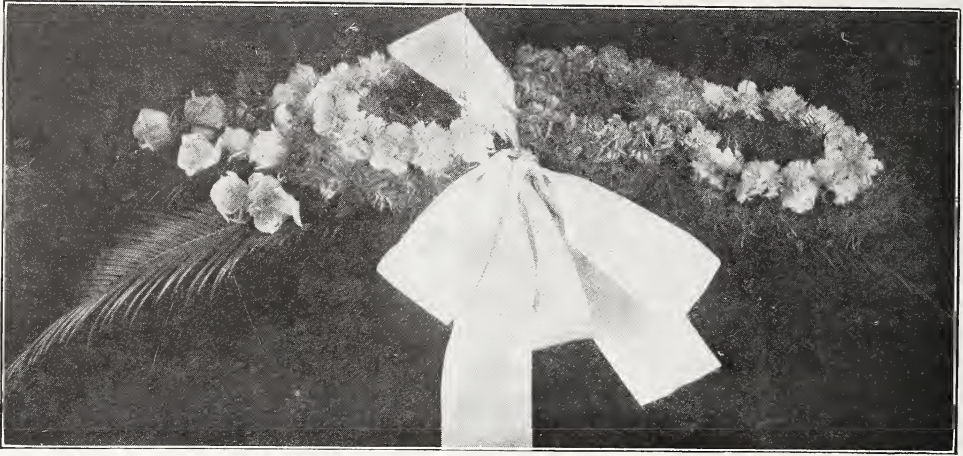
Our Lodge designs are made right, both as to arrangement of colors and form. We ask you to compare our work with that of any other firm.

A. O. U. W. 21 and 24 inch, \$8 and \$10.
Epworth League, 12 to 21 inch, \$5.00 to \$10.00.
Knights of Pythias Triangle, 12 to 30 inches, \$5.00 to \$15.00.
K of P on Easel With Panel, \$4.00 extra.
Knights Templar, Maltese Cross with cross and crown, \$25.00.
Cross and Crown, see cross and crown.
Maltese Cross, see maltese cross.
Order of Eastern Star, 12 to 24 inches, \$5.00 to \$12.00.
 With Magnolia Wreath, \$3.00 extra.
Daughters of Rebekah, Crescent and Seven Stars, 12 to 24 inches, \$5.00 to \$12.00.
Pythian Sisters, \$7.00, \$10.00.
Royal Arcanum, crown, \$5.00 and \$7.00.
Elks Dial, 21 to 24 inches, \$12.00 and \$15.00.

G. A. R. Shield, 15 to 21 inches, \$6.00, \$8.00 and \$10.00.
G. A. R. Wreath, 12 to 21 inches, \$4.00 to \$8.00.
L. O. T. M., 15 to 18 inches, \$7.50 and \$10.
Shriners, Crescent and Star with Sword. 24 and 30 inches, \$15.00 and \$20.00.
Odd Fellows, 15 to 30 inches, \$5.00 to \$12.00.
Masonic, Square and Compass, 12 to 24 inches, \$5.00 to \$12.00.
Masonic On Easel with Palm leaves, \$2.00 additional.
M. W. A., **Axe and Beetle on Shield**, 16 to 24 inches, \$8.00, \$10.00 and \$12.00.
M. W. A. Leaf with M. W. A. and Axe and Beetle, 12 to 18 inches, \$5.00 to \$10.00.
Other Lodge Designs made to order at reasonable prices; if mounted on easel with Palm Leaves, \$2.00 extra.



Pillow With Lettering



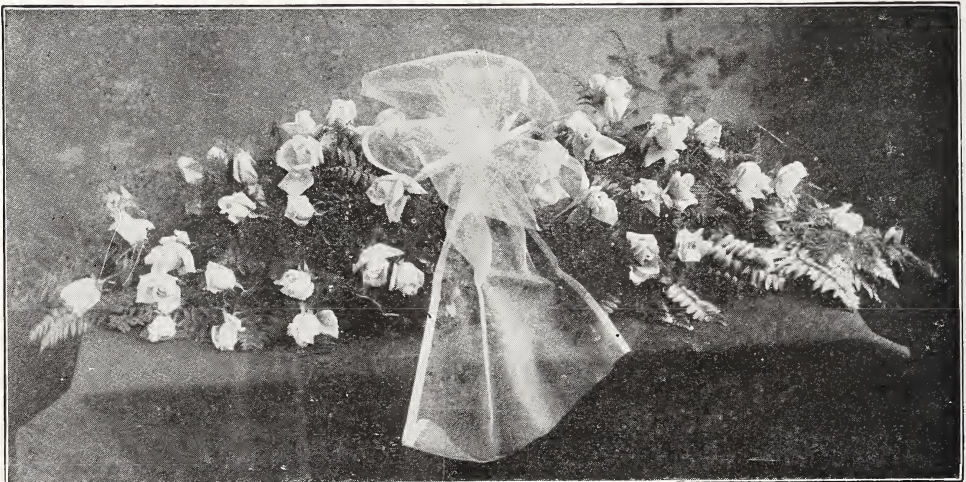
I. O. O. F. Design

Service means quality of goods plus the ability to care for your orders in such a manner that you will come again. Our ever increasing trade shows that we have both and we are giving them to our customers.

Any order that does not prove satisfactory in every way we are ready and glad to make it right—if proper claim is made within a reasonable time after date of shipment.

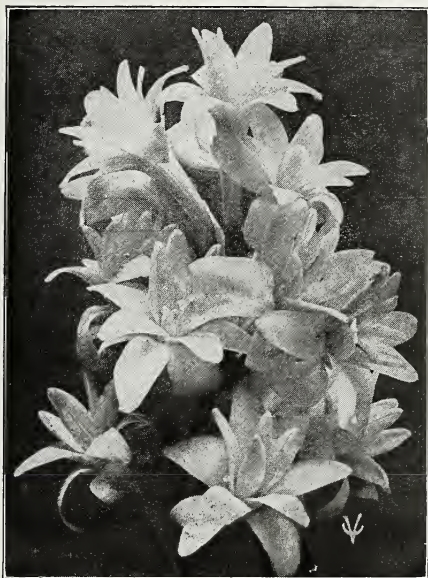
Our design work has a personality. For price, quality and finish compare it with that of any other house.

We are members of F. T. D. Flowers by wire anywhere no matter how far.



Double Spray Roses

SUMMER FLOWERING BULBS



Tuberose

AMARYLLIS (King Lily)

Very popular for house culture and easily grown.

New Hybrids, very large flowers, 60c each.

APIOS TUBEROSA

An elegant climbing plant, growing from 8 to 10 feet high, bearing large clusters of brownish purple, sweet-scented flowers in July. Perfectly hardy. 10c.

GLOXINIAS

Can supply this year assorted colors only; California grown. 25c each; 4 for \$1.00. After April 15th, pot grown plants only 40c each.

TUBEROUS-ROOTED BEGONIAS

Unexcelled for summer bedding, such as lawn beds and borders. They will thrive best in partial shade.

Single Mixed Colors. 20 cents each, 3 for 50 cents.

Double Mixed Colors. 25 cents each, 5 for \$1.00.

GIANT ISMENE

Flowers are large, like an Amaryllis, of novel form, snowy white, exceedingly fragrant. 20 cents each, 60c for 3.

ZEPHYRANTHES OR ZEPHYR FLOWER

Dwarf bulbous plants, with flowers in great profusion during the summer and fall.

Candida. Large, pure white flowers in the fall. 8 cents each, 25 cents for 4.

Rosea. 15c each, 2 for 25c.

NOTICE: If your order is to be sent by mail add 10% for postage.

FANCY-LEAVED CALADIUMS

Valued for the gorgeous coloring and marking of leaves. 30c each.

CALADIUM ESCULENTUM

(Elephant's Ears)

One of the most effective plants in cultivation for planting upon the lawn, growing 5 feet with handsome leaves often 3 feet long and 20 inches wide. It will grow in any good garden soil and is of easiest culture. Can be stored in sand in any warm place during the winter. Fine bulb, with live center shoots. Select size bulbs, 2½ to 3 inches in diameter, 10 cents each, \$1.00 dozen. Large bulbs, 3 to 4 inches in diameter, 15 cents each, 45c for 3, \$1.50 per dozen. Mammoth sized, beautiful bulbs, 40 cents each, \$1.00 for 3, \$4 per dozen.

MADERIA VINE

A beautiful, rapid-growing climber, bearing racemes of fragrant white flowers, 6 cents each, 60 cents per dozen.

SUMMER-FLOWERING OXALIS

10 cents per dozen, 20 cents for 25.

HYACINTHUS CANDICANS

Large, yucca-like leaves growing as high as 4 feet, producing racemes of long, funnel-shaped pendulous flowers. 6 cents each, 25 cents for 5.

CALLAS

Elliotiana. Flowers are of a rich golden yellow, foliage is the same as that of the Spotted Calla—deep green with white spots. 50 cents each.

Spotted Leaf. Similar to the well-known White Calla, but having its foliage marked and dotted with numerous white spots. The flowers are pure white with dark throat, 15 cents each, \$1.50 per dozen. Large size, 25c each.



Caladium Esculentum

On all small orders to go by mail add 10% for postage.

GLADIOLI—The Most Popular Summer Flowering Bulb

You are sure of fine flowers if you plant Gladiolus, the most attractive of all summer flowering bulbs. They need only a little culture to keep the weeds down, will grow in any good soil and with ordinary rainfall seldom fail to flower.

The best time to plant is about the first of May, but they may be planted by the 20th of April in the Central States. A succession of bloom may be had from July to October by making planting ten days apart.

GIANT OR LARGE FLOWERING TYPE

This list is a selection of the very best varieties that grow.

- Canary Bird.** Pure canary yellow. 15c each.
- Mrs. Francis King.** Very vigorous in growth, color light scarlet, of very pleasing shade, which attracts attention at once. Flowers of very large size, 6 cents each, 6 for 30 cents. 12 for 50c.
- America.** The finest pink Gladiolus yet introduced, of large size, color, a delicate lavender pink, tinted white, 5 cents each, 6 for 25c. 50c per dozen.
- Baron Hulet.** Finest Blue. 12 cents each.
- Glory of Holland.** Very fine white, 10 cents each.
- Peace.** White feathered lilac, 10c each.
- Schwaban.** Best yellow, 12 cents each, 5 for 50 cents.
- Chicago White.** Extra strong growers; pure white with faint lavender streak in lower petals. Very early. 6 cents each, 5 for 25 cents. 10 for 50 cents.
- Jessie.** Rich velvety red. 15 cents each.
- Panama.** Deeper pink than America. A grand early variety. 10 cents each.
- Niagara.** Rich cream and canary yellow. Heavy spike. 10 cents each.
- Mrs. Frank Pendleton.** Delicate flushed salmon pink, maroon blotch on three lower petals. 10 cents each.



Asparagus Plumosa

Ruffled Glory. Delicate pink, crimson stripe in center of each lower petal, wide open flowers,

all face in same direction. 15 cents each, \$1.50 per dozen.

Mary Blackman. Beautiful salmon red, rich maroon blotch on 3 lower petals. 20 cents each.

War. Rich blood red, of largest size. A leader among the reds. 15 cents each, 4 for 50 cents.

Augusta. Pure white, blue anthers, 5 cents each. 5 for 25 cents.

Brenchlyensis. Intense scarlet. 6 cents each, 5 for 25 cents.

SPECIAL OFFER

One each of 10 named varieties, our selections, 50 cents.

SEPARATE COLORS

Red and Scarlet. 4 cents each, 40 cents per dozen.

Pink. 4 cents each, 40 cents per dozen.

Yellow. 7 cents each, 75 cents per dozen.

Striped. 5 cents each, 50 cents per dozen.

White and Light. 5 cents each, 50 cents per dozen.

All Colors Mixed. First size, 40 cents per dozen.

All Colors Mixed. First size, 40 cents per dozen, \$3.00 per 100, postpaid; second size, good flowering bulbs, 30 cents per dozen, \$2.25 per 100, postpaid.

SPECIAL MIXTURE—Our special mixture of named varieties, made up of the very best cut flower varieties in finest assortment. 50 cents per dozen. \$3.50 per 100. (This mixture will give you satisfaction).



ON ALL SMALL ORDERS FOR PLANTS THAT GO BY MAIL ADD 10% FOR POSTAGE.

HARDY LILIES for Spring Delivery

Album. Pure white, with beautiful recurved petals.

Rubrum. White, with deep, rosy or crimson band on each petal, with deeper colored spots between.

Superbum. Bright orange red spotted purple, grows very strong and tall.

Price of any of above Hardy Lilies, 30 cents each, 4 for \$1.00.

TUBEROSE

Pearl. Universal favorite, the pure white waxy flowers and sweetness recommend it to all. It is so easily grown that it should be in every garden. First size bulbs, 25 cents for 3; 75 cents per dozen. Second size bulbs, all flowering, 20 cents for 3; 60 cents per dozen.

Armstrong Everblooming. A greatly improved single, the habit is such that it continues throwing up blooming stems through the season. 7 cents each, 25 cents for 4.

LAWN GRASS SEED

Shady Nook Mixture, especially suitable for shady places. Lb., 50c; 4 lbs., \$1.85 prepaid.

Chicago Park Lawn Mixture. Lb., 40 cents; 5 lbs., \$1.85 prepaid.

FISH SUPPLIES

Fish Food. 15 cents per package. Postage, 5 cents.

Pebbles and Shells. 15 cents per package, postage, 5 cents.

Fish Globes. 25 cents, 50 cents, 75 cents and \$1.00, by express only.

Fish Moss. Cobomba, 10 cents per bunch. Postage, 5 cents.

Jardinières. We carry a very large line of finest ware, 75 cents, \$1.00, \$1.50 and \$2.00.

Jardinières. On pedestals. \$5.00, \$8.00 and \$10.00 each.

Fern Dishes. Very fine assortment, \$1.00 and \$1.50 each.

LAWN VASES AND WINDOW BOXES

We carry in stock a fine lot of Iron Lawn Vases made in Dayton, Ohio. These are the best vases made.

Send for complete descriptive price list.

Window Boxes—Made of cypress, painted green, are 6 inches deep, 8 and 10 inches wide, 2 feet long, \$2.50; 3 ft., \$3.50; 4 ft., \$4.50 each; 5 ft., \$5.25 each. F. O. B. Cedar Falls.

Self Watering Window Boxes. Are made of galvanized iron with liner, are very clean and serviceable, 2 feet long, \$3.00; 3 feet long, \$4.00; 4 feet long, \$5.00; 16 inches square, \$2.75 each or \$5.00 per pair.



Window boxes well filled and well taken care of repay their cost many times over

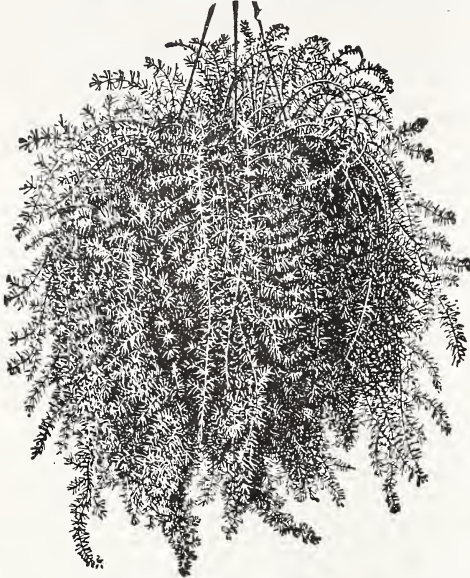
Plant Collections for Vase Use. For a vase 18 inches across. One Dracaena, 2 Petunias, 2 Daisies, 3 Geraniums, 2 Vincas, 2 Asparagus Sprengeri; all strong plants, ready for immediate effect, \$3.00.

For a vase 24 to 30 inches across: One large Dracaena or Boston Fern, 3 Petunias, 3 Daisies, 4 Geraniums, 8 assorted vines, for \$4.00.

Special Porch Box Collection. Suitable for 2 ft. box: 2 Boston Ferns, 3 Geraniums, 2 Daisies, 4 Vincas, all strong plants, \$3.00. Plants for 3-ft. box, \$3.75. For 4-ft. box, \$5.00.

ON ALL SMALL ORDERS FOR PLANTS THAT GO BY MAIL ADD 10% FOR POSTAGE.

General List of Flowering and Ornamental Plants



Asparagus Sprengeri

ASPARAGUS SPRENGERI

A grand trailing plant, especially useful to grow as a pot plant for house decoration or for planting in hanging baskets or window boxes, where it makes a graceful, drooping plant with branches or fronds 4 to 5 feet in length, of a rich shade of green; valuable for cutting, or decorating, as it retains its freshness for weeks after being cut. 15 cents each, 50 cents for 4 large plants, by express, 25 cents, 30 cents and 40 cents each. \$2.50 and \$4.00 per dozen.



Glcixinia (See Page 10)

ASPARAGUS PLUMOSA

The stem is tufted, slender and gracefully arching. From the upper portions of the branch, which are finer than the fronds of the most delicate fern spread in all directions. The whole plant is of bright, cheerful green, and one of the most distinct and effective decorative plants, of

easy culture, thriving best in full light, but not direct sun. After the plants become large, they throw large tendrils, 4 to 6 feet long, which are beautiful for decoration. 15 cents each, 4 for 50 cents; large size, 20, 30 and 50 cents.

GENERAL LIST OF BEDDING PLANTS

ABUTILONS (Several Varieties)

10 cents to 25c each.

Abutilons Trailing. 15 cents each, 4 for 50 cents.

ACALPHA

Yellow and bronze and red varieties, 10 cents each, \$1.00 per dozen.

AGERATUM

Blue and white varieties, 5 cents each, 50 cents per dozen.

ALYSSUM

Double sweet, 60 cents per dozen, \$4 per 100.

ALTERNANTHAS (Jacobs Coat)

Yellow and red varieties, 60 cents per dozen, \$4.00 per 100.

BEGONIA SHRUBBERY

We have a beautiful lot of finest flowering varieties. Choice plants, 25 cents each, 5 varieties for \$1.00.

REX BEGONIAS

The high coloring and exquisite markings of Rex Begonias make them invaluable as decorative plants for house culture; are excellent for baskets and vases if given plenty of moisture and not exposed to the full sun.

A grand lot of finest varieties, 4 inch pots, 35 cents, 5 inch pots, 50 cents.



CROTONS

Crotons are among the finest decorative plants. The leaves are more or less veined and margined and sometimes entirely variegated with shades of yellow, orange and crimson; some have long, narrow leaves, arching gracefully, fountain fashion; others are broad and short, oak-leaved. Some recurve very much; others are twisted cork-screw like. They like heat, sunshine and moisture. Large size, 40 and 60 cents each.

CALLAS

Dwarf Calla, the Godfrey. It far surpasses the common variety in freedom of bloom. Snow white and of perfect form. Blooming size, 25 cents each; large plants, 50 cents each.

Elliotana. Yellow Calla (very beautiful). 40 cents each.

Aethiopia or common calla. Excellent house-plant, requiring an abundance of water during its growing season. Strong plants, 20 cents, 30 cents and 50 cents each, according to size.

Spotted Leaf. Resembles the White Calla, but is of a somewhat smaller habit. Leaves glossy, deep green, with numerous white spots, making it very ornamental, even when not in bloom. Large 25 cents each., 60 cents for 3; small size, 15 cents each.

CUPHEA TRICOLOR

Flowers tubular in shape and about 2 inches long and combine three distinct colors in each flower; red, blue and white. 15 cents each.

IF BY MAIL ADD 10% FOR POSTAGE

COLEUS

Every lover of foliage should have a bed or border of these. They are fine for edging or massed by themselves. The Coleus will give more pleasure at less cost than any other plant. Very tender, and therefore should not be planted until all danger of frost is past.

The number of varieties is so large and varied that we only attempt to describe the standard bedding varieties.

Anna Effister. Pointed leaves with deep scalloped edges. Bright yellow and green. Dwarf.

Blackbird. Leaves and stems almost jet black with fringed edges.

Beckwith's Gem. Four shades of color, center maroon, bordered red; edge green and yellow.

Golden Bedder. - Yellow. This is the best Coleus for bedding; deep gold in the sun; dwarf.

Mrs. F. Sander. Large, creamy white center, bordered with green; blotched crimson.

Firebrand. Flaming red; fine bedder.

Golden Verschaffelti. Upper side of leaf rich yellow, reverse tinted red. A splendid bedder.

John Good. Extra strong grower; leaves light green spotted yellow.

Mrs. Carolin Beck. Yellow and green; improved Snowcrest.

Verschaffelti. The oldest, still one of the best, rich velvety crimson.

Brilliancy. The finest Giant Coleus ever offered. Bright carmine shading to deep maroon margin of leaf yellow and green; leaves have a rich velvety luster giving a most beautiful effect; habit strong and vigorous. 10 cents each; large size. 25 and 50 cents.

PRICE OF COLEUS

(Except Noted)

10 cents each, 4 for 25 cents, 12 for 75 cents. Our selection, 5 cents each, 50 cents per dozen, \$3.50 per hundred. After June 10th, \$2.50 per 100.

CHRYSANTHEMUMS

The Chrysanthemum is, without doubt, the every character and form attract the attention of all who are interested in flowers. They are the most popular flower. We are continually adding new varieties to our large stock, and offer the cream of the best standard sorts of fine, well-grown plants. Compare our list with any specialist.

Those wishing large quantities to grow for shows should write us, stating the quantity desired, and we will make you special prices and guarantee you satisfaction.

Feeding. After September 1st, all plants should be fed about once a week, alternating with weak manure water (at the rate of one pail of manure to barrel of water) and ammonia water (at the rate of a tablespoonful of ammonia to pail of water). After buds commence to open, feed but little, and that very weak.

WHEN TO PLANT. Any time after the ground can be worked.

SOIL. Dig the ground deep. Put in quantities of manure as the Chrysanthemum is a good feeder.

DISBUDDING AND STOPPING. When your plant is 6 to 8 inches high, cut back to a height

of 4 inches. Allow one flower to a stem. If you want fine flowers, do not be afraid to cut off all the side buds. Leave only the center bud on each stem to mature.

WHEN TO LIFT. In this locality plants should be lifted into large pots or boxes by August 20. After lifting, drench thoroughly and never allow them to suffer for water. Give them manure water if possible, once a week. If protected, they need not be brought into the house until well in October, and when brought in, place in a room without fire, and give plenty of air, when not frosty.

GREEN AND BLACK APHIS. There is no remedy for this troublesome pest except tobacco in some form, either smoke or tea. We use green and black aphid indoors. Price 5 cents per sheet. Tobacco dust for sprinkling on indoors, 15 cents per pound.

STANDARD CHRYSANTHEMUMS

Earliest Varieties

Golden Glow. The earliest yellow variety, fine incurved solid flower of golden yellow.

Robert Halliday. Yellow, immense size.

Smith's Advance. The earliest large flowering white, a good companion to Golden Glow.

Chrysolara Early; deep, yellow, fine.

Unaka. Very early, broad petal Japanese, incurved; flowers large and full, mauve pink.

Marigold. A grand early yellow, stiff, heavy grower.

Smith's Sublime. The best early pink.

October Queen. Pure white, very large, strong stem.

Alice Day. Small, compact flower; pure white.

Tints of Gold. Early bronze and yellow, compact, small flower, strong, upright grower.

Golden Queen. An improved Golden Glow.



MIDSEASON VARIETIES

- Betsy Ross.** One of the finest incurved white dwarf grower.
- Roman Gold.** Japan incurved, deep golden Yellow. A grand variety.
- Richmond.** Large size, incurved, clear, golden yellow.
- Celebration.** A golden Eaton of exceptional form and finish.
- Alice Byron.** Incurved white, dwarf habit...
- White Chieftain.** Of large size. Splendid keeper; incurved petals.
- Chieftain.** The loveliest pink of them all.
- Patty.** Light pink. Japanese in form; dwarf.
- Maj. Bonnafon.** Incurved solid form, light yellow; must be grown single flower to stem.
- Chas. Razier.** Tall, strong grower; pure white, sometimes tinted lavender; flower very full.
- Harvard.** Very dark crimson.
- Chas. H. Totty.** A glowing Chestnut Scarlet.

LATE VARIETIES

- December Queen.** Very late flowering; a ball-shaped Japanese white; dwarf habit.
- Yellow Eaton.** Of immense size, compact solid flower, clear, light yellow.
- White Eaton.** Of immense size, compact, solid flower, clear white.
- Mrs. E. A. Seidwitz.** Beautiful incurving deep pink. Late.
- Tekousha.** Immense size; reddish brown.
- Whittier.** A late golden yellow of wonderful finish.
- Loyalty.** Incurved, light yellow of large size and fine form.
- Golden Mistletoe.** Incurved, very late, golden orange and ye low.
- Victory.** Very late of largest size, clear glistening white.
- Mistletoe.** Of largest size, very deep, heavy flower. Light pink, turning almost white.
- White Mrs. Seidwitz.** Incurved, pure white, late.
- Midnight Sun.** Dark yellow, strong grower.
- Nagoya.** Bronze yellow, solid compact flower.
- W. H. Chadwick.** A large, Japanese white, occasionally tinted pink.
- Yellow Chadwick.** Similar to White Chadwick, except color, which is rich yellow.

CAP VARIETIES

Especially suitable for pot culture, as they grow dwarf and bushy; flowers double and good size.

- Lilac Cap. Purple Cap. Bronze Red Cap. White Cap.**

POMPONES AND ANEMONES

A great deal of interest is now centered on these varieties, are very easily grown, require only good pinching back early and the large variety of color and form make them prized very much by the amateur grower. They are practically all hardy, but will not often bloom outside in this locality.

- Sunshine.** A beautiful new yellow Anemone, several rows of petals, late.
- Golden Menza.** Large single, yellow.
- White Menza.** Large single, white.
- Bronze Menza.** Clear bronze, single.
- Bronze Doty.** Dark bronze, good size flower.
- Lillian Doty.** Very full round flower. Clear white, sometimes changing to pink.
- Crawford Pink.** Semi-double, fine pink.
- Juliana.** Early, very double, light yellow pompone.
- Mrs. Beau.** Late bronze with yellow center.
- Golden Lida Thomas.** Very late, a wonderful clear yellow pompone.
- Hilda Canning.** Late, bronze red, fine habit.
- Pink Lillian Doty.** Same as the white except in color. Early.
- Firebird.** Best early red.
- Bessie Flight.** Late bronze, semi-double.



PRICES OF ALL CHRYSANTHEMUMS

(Except Noted)

Small plant in spring, 10 cents each, \$1 per dozen. Or selections, 15 for \$1.00, \$6 per 100. Large size in the fall, 50 cents, \$1.00 and \$1.50 each.



A Bed of Cannas Bordered With Coleus

CANNAS (The Best)

No bedding plant equal to the Cannas; are easily grown, and attain large size in ordinary soil. Plant in good, rich garden soil, about the end of May, when all danger of frost is past. Water sparingly for first two weeks after planting. Set the plants 18 inches apart each way, and where more than one kind is used, be careful to set the dwarf growing varieties at outside of bed. Should be taken up in the fall when the tops are killed by the frost, and stored away in a dark, cool place. Our stock is very large, numbers many thousands, and all true to name, each variety being the best of its kind.

There is nothing more beautiful than a bed of Cannas, with their gorgeous flowers of all colors, which are produced above their rich, glossy foliage. No park or landscape planting is complete without several beds of these indispensable plants. Aside from the fact of its magnificent foliage display, it is exceedingly valuable on account of the great clusters of

flowers which are produced the entire summer.

Many of our customers, appreciating the decorative value of the plant, and aware of its value in producing rich effects in the lawn or garden, want Canna beds, but are undecided as to what varieties should be included. For such we have prepared the following selections. These will be a great advantage to you in obtaining the result you desire.

For a round bed, 7 feet across, take 19 plants—19 plants of our selection, \$3.00.

For a round bed, 7 feet across, take 37 plants, four varieties—37 plants our selection, \$5.50.

For a rectangular bed, 5x8 feet, 25 plants, three varieties—our selection, \$3.75.

For oblong bed, 5x8 feet, 24 plants, three varieties—\$3.75.

For a round bed, 13 feet across, 61 plants, 6 varieties, strong plants, our selection, for \$9.50.

WHITE VARIETY

Eureka. The best of its color, creamy white, dwarf habit, 20 cents each, 3 for 50c.

PINK FLOWERING VARIETIES

Hungaria. Soft, rosy carmine or pink, flowers in large, compactly filled trusses.

Rosea Gigantea. Very showy, large truss, carmine pink.

CRIMSON AND SCARLET SHADES WITH GREEN FOLIAGE

The President. Rich glowing scarlet, immense rounded flowers, medium height. 25 cents, 5 for \$1.00.

Chas. Henderson. Deep crimson, yellow throat.

J. Wilkinson Elliot. Light vermilion, covered lengthwise with fine, distinct crimson veins.

The above prices on Canna beds are by express at purchaser's expense.

Crimson Bedder. Dwarf habit, dark scarlet.

Firebird. A remarkable variety, perfectly formed flowerets, brilliant cardinal red, deep, green, leathery foliage; dwarf stocky habit. 25 cents each; 5 for \$1.00.

BRONZE FOLIAGE VARIETIES

Egandale. Cherry red; foliage dark maroon, medium height.

New York. Tall grown very dark foilage, fine red flower.

King Humbert. King of all Cannas. Giant flowered. Of dwarf, sturdy habit, large leathery leaves. Flowers orange scarlet of largest size.

On all small orders to go by mail add 10% for postage.

(Cannas Continued)

GILT EDGE VARIETIES

Mad. Crosby. Dwarf habit, crimson; scarlet border, golden yellow.

Panama. Dwarf habit. Flowers large, rich chestnut orange, bordered deep yellow, 20 cents each.

GIANT ORCHID-FLOWERING CANNAS

A distant race of Cannas, noted for the immense size of their orchid-like flowers, often 5 to 7 inches across.

Wyoming. Large flowers, a beautiful shade of orange, tall, strong grown.

Louisiana. 6 feet. Very large, beautiful vivid scarlet orchid-like flower, often measuring 5 to 6 inches across. Foliage a glossy green.

YELLOW FLOWERING

Florence Vaughn. Deep golden yellow; thickly spotted with scarlet.

Yellow King Humbert. Identical with King Humbert, in habit and growth, and flowering produces yellow flowers dotted red and has green foliage. 25 cents each; 5 for \$1.00.

Buttercup. Clear yellow, good size flower.

PRICE LIST OF CANNAS—Standard Varieties.

Notice: This price is for started plants growing in pots ready May 10th. Purchasers selection, small plants, 15 cents each, 12 for \$1.50, 25 for \$2.25. Our selection—small plants, 12 for \$1.00; 25 for \$2.00; 50 for \$4.00. Purchaser's selection second size, 25 cents each, 12 for \$2.50, 25 for \$4.75.

ENGLISH DAISY

Beautiful little border plants, which bloom through the summer when planted in a shady situation.

Double Pink and Double White. 5 cents each, 50 cents per dozen.

Daisy Marguerite. See Marguerite.

DRACAENA INDIVISA

Beautiful window and greenhouse plants, thriving in a warm, dry room. Should have their leaves sponged off once or twice a week. For general decorative purposes, this is one of the best plants we know. It is of graceful habit, and an exceedingly rapid grower and is not affected by the sunshine, drought or storm. It forms a palm-like tree and does equally well either indoors or in the open ground; is especially suited for center of vases, baskets and window boxes. Small size, 25 cents; larger size, 50 cents and 75 cents each.

Dracaena Terminallis. Broad ribbon-like leaves, of richest shades and colors, enjoys heat and sun, suitable for vases, baskets and boxes. 50 cents and \$1 each.

FORGET-ME-NOT (Mysotis)

These quaint, neat, low-growing plants love cool, moist soil, and, like pansies, bloom most freely in fall and early spring, producing star-like, light blue flowers. 10 cents each, 75 cents per dozen.

FEVERFEW

One of our finest bedding and vase plants, giving an abundance of double white flowers, one inch across. 10 cents, 20 cents and 30 cents each; \$1, \$2, \$3 and \$5 per dozen, according to size.

FICUS ELASTICA

(India Rubber Plant)

This has become a general favorite as a house plant because the large shining green leaves endure the dry air of a living room as well or better than any other part. \$1 each; \$1.50 each, \$2.00 each.



FUCHSIA (Single)

Speciosa. Very early bloomer. Tube and petals light rose.

Charming. Corolla pink; sepals purple. Early and free.

Black Prince. Sepals bright carmine, corolla light rose.

Charming. Corolla pink; sepals purple. Early and free.

FUCHSIA (Double)

Jupiter. Sepals rich scarlet, corolla rich royal purple.

Mrs. E. G. Hill. Corolla clear white, strong grower.

Price 15 cents each; 4 for 50c; larger size, 25 cents each.

HELIOTROPE



Universal favorites on account of their delightful fragrance. They flower equally well as bedding plants in summer or pot plants in winter.

L. D. Opale. Lilac, with white eye.

The Queen. Dwarf habit; flower royal purple, with distinct white center.

Snow Wreath. The nearest approach to snow white we have in the Heliotrope.

Price of Heliotropes: Small plants, .15 cents each, 4 for 50 cents; larger plants, 25 cents each.

THE CARDINAL CLIMBER**NEW TENDER CLIMBER**

We consider this the most brilliant annual climber ever sent out. Very strong grower, beautiful fern-like foliage literally covered with a blaze of fiery cardinal red flowers, from mid-summer till frost. Flowers are 1½ inches in diameter and borne in clusters of 5 to 7 flowers. Like a warm, sunny situation and good soil. 25 cents each, 5 for \$1.00.

CYPHERUS ALTERNIFOLIUM**(UMBRELLA PLANT)**

A pretty, unique and striking object of very easy culture, growing and thriving under almost positive neglect. Being an aquatic, it is at home in the aquarium, but succeeds equally well as an ordinary pot plant if an abundance of water is given. Next to palms, the plant deservedly takes rank among the most useful foliage plants for inside culture. 25 cents and 50 cents each.

CYCLAMEN

Giant Flowered. Most beautiful and decorative of all pot plants, for winter and spring blooming. Foliage broad, massive and graceful, of dark green, beautifully variegated with silver and rose. The immense, fairy-like flowers are carried on long stems and produced in profusion for several months; quite fragrant. We have a fine stock, first size, separate colors, suitable for next winter's bloom at 25 cents and 50 cents each. Large size in fall, \$1, \$1.50, \$2.00 and \$3.00 each.



Cyclamen

CARNATIONS

Plant in the open ground as soon as the ground can be worked in the spring. If wanted to flower during the summer and fall, as soon as the flower shoots appears, tie to small stakes; if wanted for winter blooming, the flower shoots should be pinched off until about the middle of August; by that time they will have made very strong, bushy plants. Take up and pot before September first and keep shaded and close for a few days, when they will be ready for removal to the conservatory or window, where they are to flower.

Our list of varieties are the best.

STANDARD VARIETIES

Enchantress. A splendid light pink, deepening toward center; far superior to any light pink.

Aviator. Medium size, intense bright scarlet, very prolific bloomer.

Matchless. Fringed white. Dwarf, sturdy grower, very fragrant.

Nebraska. Largest size, clear dark scarlet. Good grower and bloomer.

Laddie. Of excellent size. Clear glistening pink. 15 cents each.

Mrs. C. W. Ward. Dark clear pink. Fine.

Rose Pink Enchantress. Clear, glistening, dark

Morning Glow. Light pink, variegated darker.

Thos. Joy. Strong grower, fine clear white.

October Sunshine. Clear light yellow, fine, 25c.

Ruth Henshaw. Very dark pink, strong upright grower.

Price of Small Plants... For growing for next winter's bloom, 10 cents each; \$1 for 12; large size plants in fall, 25 cents each, 5 for \$1.00.

CARNATIONS FOR SUMMER BLOOM

This year we shall have a fine stock of plants, suitable for outdoor summer bloom, of best varieties suitable for that purpose. State varieties wanted. 20 cents each, 3 for 50 cents. This does not include the new varieties.



Bed of Coleus (See page 13)

A SELECT LIST OF BEST DAHLIAS (Priced Separate)



The Dahlia is now taking first place among autumn-flowering plants; this is largely due to the splendid new sorts that are being brought out in the Cactus and Decorative class. There is nothing that can equal them in range of color and abundance of bloom. Any good, rich garden soil, not too wet, will grow good Dahlias. Show and Decorative types are the smoother petals. Cactus are the curled and twisted petals as shown in the cut.

Plant Dahlias in open ground, about the first of May, if the weather is favorable. If the ground is at all cold and wet defer planting until later date. With us, the started plants have proved as good as the tubers. In fact, they come into bloom more quickly than the tuber and are cheaper.

Always stake your Dahlias as soon as they are tall enough, using a good stout stake at least 4 feet high. In the fall, after hard frost, cut the tops off within 3 inches from the ground, take up and store in a cool cellar free from frost.

SPECIAL OFFER ON DAHLIAS. We have a fine lot of best named varieties that did not bloom early enough last year to true up. We offer them in assortment divided clumps—7 for \$1.00. They will give you satisfaction, as they are not only very cheap, but they are valuable sorts.

Ethel Wolfrum. Center white, outer petals rose, very free. 30 cents.

Break of Day Cactus. Clear sulphur yellow, changing white. 25 cents.

Lyndhurst. Brilliant cardinal red. 25 cents.

Princess Victoria. Primrose yellow, very early flowering. Large size 25c.

Dreers White. Best shown white, 30c.

Easton. Brilliant Turkish red, 20 cents.

Jack Rose. Brilliant crimson, red, large size, 20 cents.

Oregon Beauty. Rich oriental red, shaded gold and garnet, 25c.

Sylvia. Pleasing shade of mauve pink, 25 cents.

Amber Queens. Pompone or miniature, rich amber shaded Apricot, 20 cents each.

Catherine. Princess yellow pompone, 20 cents.

Twentieth Century. Single pink shaded, white and crimson, 25 cents each.

Yellow King. Of very large size, pure bright yellow. 25 cents.

Countess Lonsdale. Apricot shaded pink, early flowering. 25 cents.

Galathea. Delicate soft pink cactus. 25 cents.

Goldland. Golden yellow cactus.

Pierrot. Long tubular narrow petals, deep amber. 25 cents.

Little Herman. Deep garnet tipper white. 25c.

Snow Clad. Fine double white pompone. 25 cents.

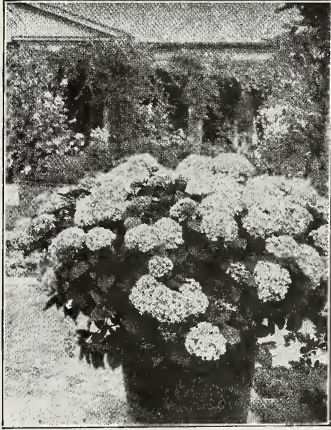
F. Olivet. Brilliant maroon, center almost black. 25 cents.

Maud Adams. Large pure white tinted pink. 30c.



Geranium H. Mitchell

HYDRANGEA



These beautiful shrub plants are valuable for lawn or porch decoration when planted in pots or tubs. The large clusters of flowers resemble those of the Snowball, being larger and remaining on the plant from two to three months.

Otaska. Bright pink. Sometimes tinted blue; dwarf, sturdy habit; profuse bloomer.

Thomas Hogg. Large, pure white, free bloomer.

FRENCH VARIETIES

These new varieties are proving of exceptional value. Heads of flowers are very large and full and blooming qualities are excellent.

Avalanch. A splendid large white.

E. G. Hill. Of immense size, beautiful pink.

Mad. E. Mouillere. A favorite white variety; very large size; a beautiful variety.

Price of Hydrangeas; 25 cents each; larger size, 50 cents, \$1.00, \$1.50, \$2.00 and \$3.00 each.

BUDDLEYA VARIBILIS

(Butterfly Bush or Summer Blooming Lilac.) A beautiful bush almost constantly in bloom. Flower very similar in shape and color to a lilac, is not hardy in this locality, but is well worth planting. Pot grown plants, 25c each.

LANTANA

Quite tender. They are strong-growing and very free-flowering. Valuable as bedding plants, standing the sun very well; also good for planting in pots. 20 cents each. Large size 30 cents each.

Aurora. Strong grower; yellow.

Javil. Purest white, a most beautiful flower.

L. Poitevine. Beautiful rose; rather dwarf.

Radiation. Brilliant red, center orange.

Weeping. A beautiful trailing variety, very desirable for planting in hanging baskets, vases, pots or open ground. Bears an immense profusion of lovely clear pink flowers from early summer until late in the fall.

HIBISCUS

Rapid-growing tropical shrubs with rich,

glossy foliage and large showy blossoms, often measuring 4 inches in diameter. They often bloom freely throughout the summer in beds, and no plant gives better satisfaction in a warm sunny room in winter.

Aurantica. Double orange.

Carminatus Perfectus. Flowers nearly 5 inches across, rich soft carmine, rose color. Single.

Peachblow. Double light salmon pink, very free bloomer; the best of its class.

Sub-Violaceus. Flowers are enormous and semi-double, carmine, tinted violet.

Price of Hibiscus; Small plants, 20 cents each; large size, 30 cents and 50 cents each.

IVIES

English. An old favorite vine; hardy in the South, but will not stand our Iowa winters. Large, 25 and 50 cents.

Kenilworth. An old familiar trailing Ivy. Perhaps the best for shaded places or rooms where the light is not strong. Each, 10 cents.

Parlor. Well known Ivy which is very popular as a plant for hanging baskets and vases. Easily grown. Each, 10 cents, 3 for 25 cents; large, 25 cents each.

MOONFLOWER

Strong-growing climber reaching a height of 40 feet by October 15, if planted in rich ground, exposed to the sun.

White. (*Ipomoea noctiflora*.) Flowers 5 inches in diameter and pure white, with five-pointed star in the center. 20 cents each.

Blue. (Leari.) Flowers deep azure blue, 4 inches in diameter. Very pretty. 20 cents each.

AMERICAN WONDER LEMON

25 cents each; large size 50 cents.

OTAHEITE ORANGE

25 cents and 50 cents.

MARGUERITE OR PARIS DAISY

Always in demand because of the many uses to which they are adapted. One of the most satisfactory plants in cultivation, being easily grown.

Chicago White. Of large size; exceptionally free bloomer. 25 cents each; large, 50 cents.

Queen Alexandria. Is the only large-flowering pure white Daisy, with double, semi-double and single flowers on a single plant at one time. Flowers averaging 2½ to 3 inches in diameter; an excellent pot plant for winter; useful for cutting. 25 cents each; large size, 40 cents and 50 cents.

Yellow Marguerite. (Queen Belgims.) 15 cents each. Large size, 25c and 50 cents each.

Small White Variety. Very free bloomer. 15c 35c and 50 cents each.

TRADESCANTIA (Wandering Jew)

Fine for hanging-baskets, vases, etc. Easily grown if given plenty of water.

Multicolor. Foliage brightly marked and striped white, rose, pink, bronze and green. 10 cents each.

Sepens Vittata. Leaves bright green, striped with creamy white. 10 cents each.

FERNS



Nephrolepis Whitmani

Dwarf Boston Fern. Teddy, Jr. A dwarf type, of the Roosevelt, fronds broad and beautifully tapered and are of wavy appearance. A beautiful fern and well worthy of trial. 25 cents, 50 cents, \$1.00 each.

WIRE BASKETS. For Sword Ferns and for porch use, 35c, 50c and 75c each.

Moss for lining same, 35 cents per basket.

JARDINIÈRES. We carry a splendid assortment of fancy kinds, 50c, 75c and \$1. 12 to 16 inches across, \$2 and \$2.50 each.

Jardinières on Pedestal. A beautiful work of art, \$8 and \$12 each.



Boston Fern

Ostrich Plume Fern. (Whitmani). Unquestionably the most valuable type yet introduced. Of compact habit, the pinnae are deeply divided, giving the plant a very graceful appearance. Small plants, 25 and 50 cents each; strong, 5-inch pot plants, \$1 each; extra fancy specimens, \$1.50, \$2.00 and \$3.00.

Boston Fern. The most popular house plant in cultivation. In well known specimens, the fronds attain a length of 6 or 7 feet, like plumes arching over in a most graceful manner. A very fine plant for hanging pots or baskets or window boxes in the summer, and conservatory in the winter. First size, 15 cents each, 50 cents for 4; second size, 25 cents each, \$1 for 5; third size, 50 cents each; fourth size, \$1.00 each. Beautiful specimens, \$2, \$3 and \$4 each.

Dwarf Boston Fern. (Scotti). Of more dwarf and bushy growth than the preceding. Fronds droop gracefully and are not so long and coarse and the leaves are more crinkled. A rapid and easy grower. 25 cents, 50 cents and \$1 each.

Giant Boston Ferns, Roosevelt. Is a stronger grower than the Boston fern—long, heavy leaves, having a wavy appearance.

Strong plants, 25 cents and 50 cents each; 5-inch pot plants, \$1.50.

Nephrolepis Schlozii. Very dwarf crested variety of Whitmani variety of Sword Fern. 25 cents, 50 cents and \$1.00.

GENERAL COLLECTION OF FERNS

Adiantum Cuneatum. The hardiest of the Maiden Hair varieties, strong grower, 25 and 50 cents.

Adiantum Cuneatum. The popular fine foliage Maiden Hair, 25 and 50 cents.

Holly Fern. A compact growing heavy leaved fern of beautiful form and habit. 25c, 50c and \$1.00 each.

FERNS FOR DISHES AND THE HOUSE

We have a good stock of the best growing varieties suitable for fern dishes and single pots in the home in the best of the easily grown varieties. Small plants suitable for fern dishes, 15 cents each, 4 for 50 cents, 9 for \$1; larger size for specimen plants, 25c and 50c each.

FERN DISHES. Several kinds, both in glazed and Rockwood ware, 75c, \$1 and \$1.50 each.

HARDY FERN

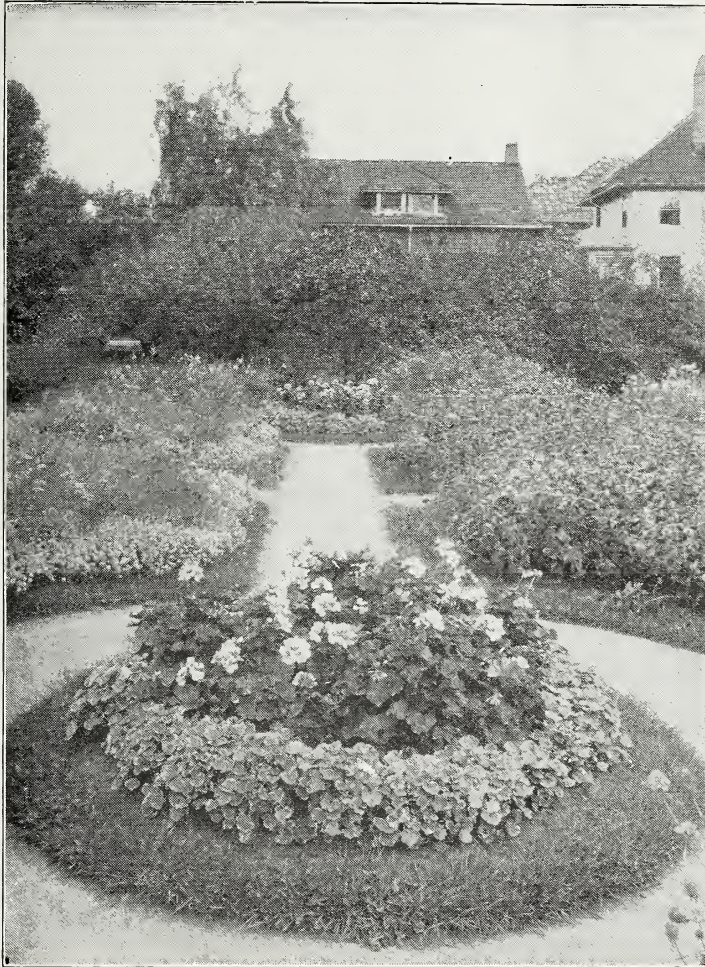
They do best in a partially shaded situation, as on the north side of a house. Ready in May.

Tall Growing Brakes. 30 cents each, \$3.00 per dozen.

JAPAN AIR PLANT. Similar to a very fine feathery fern; very odd; live without water or soil; should be hung up in a little vase. 25 cents each.

On all small orders for plants that go by mail add 10% for postage.

GERANIUMS



A Bed of Flowering Geraniums Bordered With Mad. Salleroi.

18 Geraniums from 4-inch Pots and 24 Geraniums Mad. Salleroi, for \$5.50 by express.

In ordering state variety wanted. They should be all one variety for effect.

The Geranium is the most popular plant for bedding purposes, and deservedly so, as they continue to bloom profusely in the hot summer months when other plants are scorched by sun and dry weather. The new double varieties bloom as freely as the single and make as fine bedders, being more durable.

Our list of flowering Geraniums will be found very large and complete. We have taken great care in selecting the different varieties showing distinct characteristics of their own.

HOW TO HAVE A GOOD BED OF GERANIUMS

Plant in medium soil, not too much sand or manure. See that they are in a bright, sunny place. After they once become established do not over-water as this will have a tendency to make them go to leaf growth; when weather becomes very hot a light mulch is beneficial. Always keep soil around plants stirred to a

depth of at least one inch. Keep plants free from all old flowers and leaves and if any of the plants become ungainly, pinch off ends of long shoots.

For massing in beds and for window boxes and vases, no varieties excel B. Poitevine, S. A. Nutt, Abbie Schafer, Countess, A. Richard, T. H. Trego, Madame Chevalier, Mrs. Hill, Telegraph and Jean Viaud in the respective colors.

SPECIAL NOTICE—Have your Geraniums shipped by express—it takes a long time for them to get over mailing.

SCENTED GERANIUMS

Exceedingly useful on account of their fragrant foliage and largely used in baskets and bouquets. Also used for making up toilet waters, fragrant jars, etc.

Variiegated Leaf. Sweet scented. 20 cents each.

Skeleton Leaf Rose. 25 cents.

Large Green Leaf. Sweet scented. 15c and 25c each.

Dale Park Beauty. Flowers similar to a Pansy Geranium. Deep lilac color; foliage fragrant. 25 cents each.

BORDER GERANIUM

Madam Salleroi. Leaves from 1 to 2 inches in diameter; plant is quite dwarf, growing in dense, round masses quite rapidly. Leaves green with margins of pure white; valuable for baskets, vases and for second rows in bedding designs, 10 cents each; 25 cents for 3; \$1 for 12; \$6 for 100.

VARIEGATED SILVER LEAF VARIETIES

Madam Pollock. Green disc, bronze zone, edged silver, 30 cents.

Happy Thought. Variegated green bronze white foliage; bright red flowers. 30 cents each.

Variiegated. S. A. Nutt. Broad, stocky growth, beautiful deep green leaves, each marked with a broad pure snow white band. Flowers double, bright red, large, extra-filled-out-blooms, rising from the white colored foliage, very handsome. Not suitable for outdoor planting. 35 cents each.

IVY-LEAVED GERANIUMS

These are the grandest of all house plants, or for baskets or vases. They can be grown to droop or climb, as desired.

H. Glacomelli. Semi-double; color is a beautiful light rose, blotched crimson upper petals.

Joan d'Arc. Perfectly double; flowers white.

P. Crozy. Hybrid between the Zonales and Ivies, form of trusses and the floweret as found among the Ivies. Soft, bright scarlet, a grand bedder.

Madam Thibaut. Beautiful rose pink, very large trusses.

Gordon's Glory. Exquisite bright scarlet; a profuse bloomer, 20 cents each.

Price of Ivy Geraniums. Small plants, 15 cents each, 4 for 50 cents; large plants, 25 and 35 cents each; \$2.50 and \$3.50 per dozen.

GERANIUMS (Continued)

The following are the best varieties on the market today. They are the best there is for basket, window box and for bedding outside..

BEST STANDARD DOUBLE VARIETIES

- Jean Vaud.** Semi-double, of largest size; pure soft pink with two white blotches.
- La Favorite.** The best double white for bedding.
- Madam A. M. Chevalier.** Trusses of immense size, splendid habit. Double, white.
- Abbie Schafer.** Dwarf habit, light crimson; very fine.
- S. A. Nutt.** The best of all rich, dark crimson varieties. Of perfect shape and large size.
- A. Rothschild.** Light daybreak pink.
- E. H. Trego.** Scarlet; soft velvety finish.
- Red Wing.** Intense scarlet—one of the best of its color.
- Helen Mitchell.** An improved A. Richard. Semi-double, orange scarlet. A grand bedder.
- M. D. Montmort.** Deep purple.
- Beaute Poitevine.** Semi-double, salmon pink.
- Countess.** Deep pink, graduating to salmon toward the edges.
- Ruby.** Dark wine color, dwarf grower.
- Rosalia.** Tall, strong grower. A purplish crimson, very showy bedder.

BEST STANDARD SINGLE VARIETIES

- Mrs. J. M. Gaar.** Single pure white.
- Mrs. E. G. Hill.** Salmon pink; very good bedder.
- Telegraph.** Mammoth size, robust habit of growth, combined with its color and remarkable productiveness, places it before all others. The foliage is dark green with heavy zone; flowers reddish deep orange.
- Clifton.** Intense scarlet. Free bloomer.
- E. Arcna.** Single rich velvety crimson.
- Grauville.** Deep rosy pink.

PRICE OF ALL GERANIUMS (Except Noted.) Small plants 2 inch pots, 10 cents each, \$1.00 per dozen; \$6.00 per 100; second size from 3 inch pots, 15 cents each; \$1.50 per dozen; \$12.00 per 100; third size, 4 inch pots, 30 cents each; \$3.00 per dozen; \$20.00 per 100. Extra large for window box and vase use, 40 cents each; \$4.00 per dozen.

SPECIAL OFFER OF NEW GERANIUMS

Fancy Cyclops and a number of other varieties. We do not have a sufficient stock to list. Are all odd color with distinct markings. You are sure to have something different if you buy this collection. 30 cents each, 4 for \$1.00, \$2.50 per dozen.

PENNISSETUM RUPPELIANUM

One of the most beautiful border or bedding plants, producing long, feather-like purplish blooms, very graceful and ornamental. Very suitable for planting between rows of Cannas and Salvias. Small plants, 15 cents each; \$1.50 per dozen; large, 25 cents each, \$2.50 per dozen.

PANDANUS

Veltchii. Fine plants. 4 inch pot, \$1.00; 5 inch, \$1.50.

PRIMROSES

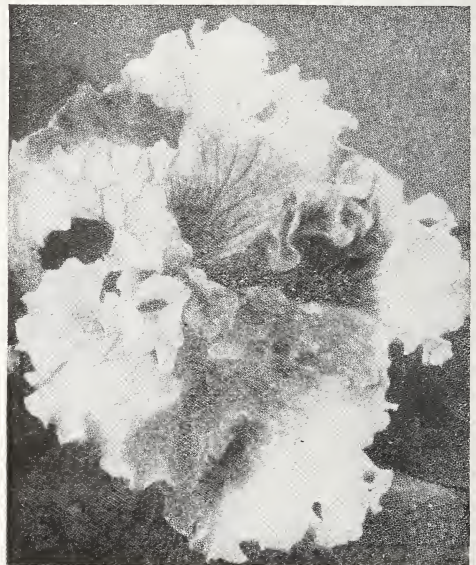
Of easiest culture in greenhouses or light windows, flowering abundantly and continuously with little care.

- Baby Primrose.** Rosy lilac flowers; very graceful. Small size, 20 cents each; large 50 cents.
- Chinese.** Several colors of the very best strains. 25 cents each.
- Obconica.** This is one of the most useful of flowering plants; always completely covered with flowers, which are of a soft lilac shade and very charming. 25c, 50c and \$1 each.

DOUBLE PETUNIAS

Few plants give as general satisfaction as the Petunia. All are strong, rapid growers and free bloomers. We have a large number of varieties, varying in colors from pure white to dark crimson, variegated, beautifully marbled and blotched.

- Seafoam.** For purity of color, form, size and vigor of growth, this variety is unsurpassed in double White Petunias. 20 cents each. Larger size, 40 cents each and 50 cents each.
- Pink Beauty.** Beautifully fringed and of clearest pink. 25 cents.
- Colored Varieties.** We have a nice assortment of the best colored varieties. 20 cents each; larger size, 35 cents each.



SINGLE PETUNIAS

No bedding or window box work is complete without them.

- Giant of California.** Single, finest mixed colors, 10 cents each, \$1.00 per dozen. Large size, 20 cents each, 6 for \$1.00.
- Rosy Morn.** Medium size flower, a wonderful bloomer. Especially adapted for vase and window boxes, 10 cents each, \$1.00 per dozen. Large size 20c each, 6 for \$1.00.
- Pride of Portland.** Single pink, striped center.
- Blue Bird.** Deep blue single.

Pelargonium or Lady Washington Geraniums

Showiest mass of bloom produced on any soft-wooded plant that we have. The flowers are of good substance, beautifully ruffled and fluted while the colors are perfection in gorgeous shades and markings and of great size and much better bloomer than the older varieties.

Mad. Vibert. Ruffled flower, fiery red, with black blotches.

Mrs. Robert Sandford. Semi-double, pure white, sometimes slightly marked dark.

Easter Greeting. This new species is the earliest of all Pelargoniums with enormous florets and clusters having light green foliage and of dwarf robust growth. Blooms from March until fall. The flowers are of a fiery amaranth red with five regular shaped spots.

Swabian Maid. A sort of Easter greeting, reddish carmine with five large black blotches bordered purplish carmine.

Gardener's Joy. Enormous clusters, apple blossom pink, two upper petals blotched carbon brown.

PRICE OF PELARGONIUMS. Small plants, 25 cents each; large size, 50 and 75 cents each.



Type of New Pelargonium

PANSY GERANIUMS

Wilbur Wright. Mauve with crimson shading, full bloom. Very prolific.

Mrs. Loyal. The flowers are of medium size and have white throat. Each petal is shaded toward the center with a rich lavender pink and a dark maroon blotch in the center; is of easiest growth, dwarf in habit and literally covered with flowers. 25 and 50 cents each.



Kentia Palm

PALMS

Two or three well-known Palms in a house produce a better decoration than a hundred small plants and are not so much trouble. They are now the most fashionable plant for all decorative purposes. Keep in a moderately warm room; sponge off the foliage frequently with warm water and whale-oil soapsuds and then with clear water; give plenty of water, especially in summer and do not expose to the scalding sun rays in summer.

Kentia Belmoreana. An elegant species in which the Pinnae are beautifully curved and reflexed. One of the easiest to grow in cultivation. Nice plants, \$1 each; large size, \$2, \$3 and \$5 each.

Kentia Forsteriana. Similar to the preceding, but taller and more robust. Nice plants, \$1 each. Large size, \$2, \$3 and \$5.

Areca Lutescens. A most elegant palm. It is easily grown and is useful to every state of its growth; fine color, graceful habit, stems golden yellow, tall growers. \$1, \$2 and \$3 each.

Latania Borbonica. (Chinese Fan Palm). One of the most desirable for general cultivation. Especially desirable for center vases, etc., \$1 and \$2.

Phoenix Ruebleana. Dwarf feathery growth. The place of the cocoa palm and easier to grow. Very suitable for center of fern dishes. Takes \$1.00 and \$1.50.

PANSIES

The Pansy begins to bloom in February and continues until late in the fall. Should be placed in very rich soil and watered freely. We offer a fine collection of carefully grown, from pots, that are sure to give satisfaction and bloom freely.

Giant Varieties. Colors separate. 60 cents per dozen.

Our Special Mixture. Containing a fine mixture of all varieties. 75 cents per dozen, \$5 per 100.

POINSETTIA

This beautiful Christmas-blooming plant is the admiration of all who see them. Would not advise you to buy them before November, securing the plant in full bud, ready to bloom. A description of the plant is hardly necessary, as you have all seen pictures and descriptions in the magazines. Price for Christmas-flowering, strong, 4-inch pot plants. 50 cents each; pans made up of 3 plants, \$1.50.

BEDDING PLANTS

THE FOLLOWING ARE ESPECIALLY SUITED FOR BEDDING: Acalpha, Alternanthera, Alys-sums, Dahlias, Daisies, Feverfew, Forget-me-nots, Heliotrope, Lantanas, Marguerites, Pansy, Pe-tunia. Also seedlings are quoted.

THE FOLLOWING ARE ESPECIALLY ADAPTED FOR VASES AND WINDOW BOXES: Alys-sum, Asparagus Sprengeri, Crotons, Dracaena, Geraniums, English Ivy, Tradescantia, Vincas, Ger-man Ivies.

In the following list will be found those especially suited for bedding, space not permitting a more general description in body of catalogue.

Alternanthes. Red and yellow, 60c per dozen, \$4.00 per dozen.

Achryanthus Emersoni. Unexcelled for bedding, rich red solid color, can be kept real dwarf. Small size, 75 cents per dozen, \$4.50 per 100; large size, \$1.50 per dozen, \$8.00 per 100.

Cuphea. Ladies' Cigar plant. 1 0cents each.

Centurea Gymnocarpa (Dusty Miller). Fine for edging beds, 10c each, 75c a dozen, \$4.50 per 100.

Lobelia, Crystal Palace. Dwarf blue. Fine for borders; stands sun and heat well. 10 cents each, 75 cents per dozen.

Lobelia Gracilis, Blue and White. Trailing suitable for baskets of window bordering. 10c each, 75 cents per dozen.

Pyrethrum, or Gold Feather. For bordering beds, keeps its color throughout the summer, 5 cents each, 60 cents per dozen, \$3.50 per 100.

Caladium Esculentum. For center beds. Started in pot, 30c and 50c each.

Those wanting large quantities of bedding plants, such as Geraniums, Coleus, Alternanthera, Cannas, etc., will do well to submit their list to us before buying.

GREENHOUSE PLANTS

General list, in which, owing to limited space, we are obliged to omit descriptions.

Lobster Cactus. (Christmas Cactus). 15 cents and 25 cents each.

Sedum. Small, low-growing plants, suitable for rock work. 10 cents each, \$1 per dozen.

Cobea Scandens. A grand climbing plant for porches; purple or white cup-shaped flower, 25 cents each.

Cineraria. Large flowering plants. February, March, April delivery only, 50 cents and 75 cents each.

Impatiens Sultani. 10 cents each, \$1 per dozen; large, 20 cents each.

Madeira Vine. 5 cents each, 50 cents per dozen.

Stevia. Beautiful sprays of small white flowers; blooms in the fall 10 cents each, 3 for 25 cents. Large plants in fall, 50 cents.

Pilea. (Artillery Plant) 10 and 20 cents each.

AQUARIUM PLANTS

Comba. (Aquaria Moss) 10 cents each.

Cyperus Alternifolius (Umbrella Plant). 15 cents 25 cents and 50 cents each.

SEEDING SUITABLE FOR BEDDING

We annually grow a large quantity of seedling for our own use. Nearly all this stock is not grown and especially suited for immediate effect.

Asters. Finest assortment of kinds and colors. 50 cents per dozen; \$3.50 per 100.

Canary Bird Flower. 10 cents each.

Candy Tuft. White. 50 cents per dozen.

Mignonette. 50 cents per dozen.

Petunia, Giant California. \$1 and \$2 per dozen.

Browalia. Blue. \$1.00 per dozen.

Ricinus (Castor Oil Beans). 25 cents each, 5 for \$1.00. Large size, 35 cents each, 3 for \$1.

ROSES

Plant in sunny location, in deep dug, well enriched soil. After plants are set out keep soil stirred; do not plant in hole in sod and expect them to bloom. Cultivate same as any garden vegetable and you will be repaid for your work and trouble.

Culture for Winter Bloom. Keep in a room with temperature 60 to 65 degrees with all the sunlight possible. Sprinkle under side of foliage every morning if sun is shining. Do not sprinkle on cold, dark days unless the atmosphere of the room is very dry. As soon as the bud is matured, cut the stem down to within three or four inches of the main stalk. Use rotted cow manure in soil. A little weak manure water at the roots once a week is very beneficial if the plant is growing strong.

Insects and Diseases. Greenfly is easily subdued by dusting the leaves with powdered tobacco. The rose-slug is quickly killed by dusting the insect or the whole plant—with road dust on a sunny day. Mildew, which affects the leaves in the early spring and fall, is due to the variable temperature. For this dust powdered sulphur on the leaves. Roses must be sprayed thoroughly every sunny day. In the morning is preferable.

Roses by Mail. Unpack immediately. Do not expose roots, but place at once in a shallow dish of tepid water. Toward evening carefully plant in a good mellow soil, thoroughly firming the moist earth around the plant. Shade from the mid-day sun just after planting. If you can possibly avoid it do not have your plants sent by mail—the small amount of express you will have to pay will be more than made up on the extra value of plants we will send you.

Roses by Express. They are usually packed with all or part of the earth adhering to each plant. They invariably arrive in good order. If the balls of earth are dry hold carefully in a pail of water for a moment, then firm the earth carefully around the balls. Never plant a rose when dry at roots; always soak before you put in the ground, then firm the soil thoroughly around them and water again.

IF ORDER IS TO BE MAILED ADD 10% FOR POSTAGE



Golden Ophelia

will be more than made up on the

STANDARD COLLECTION OF EVER-BLOOMING ROSES

These Roses are especially suited for summer bedding where large quantities of blooms are wanted. Are not hardy in this climate.

Bon Silene. Bright cherry crimson; strong, vigorous grower; wonderful bloomer.

Duchess de Brabant. Light rose, heavy shading of amber and crimson.

Gruss an Teplitz. Richest scarlet, shading to a velvety crimson; larger than Hermosa.

Hermosa. Rosy pink. An old garden favorite.

Mad. Cecil Bruner. Popular baby pink rose, comes in clusters, used largely for corsage.

STANDARD TEA ROSES

Suitable for summer planting. The flowers are much larger and more perfect than the preceding list but not in such quantity.

Etoile de France. Strong grower, of a lovely shade of red.

Mrs. Aaron Ward. Buds copper, deep golden orange, shading outward to a creamy yellow.

Madam Cochet. Rich healthy foliage, long stout stems, extra large and full. Bright rose.



Angeles. A grand new white, almost as large as Kaiserine, but a better bloomer. 30c each.

Mad. Butterfly. A glorified sport of Ophelia, a wonderful shade of old gold, orange and yellow.

Crusader. A velvety crimson scarlet, in a class by itself; good size flower; fine long stem; free in growth and blooming. 30 cents.

Kaiserine Aug. Victoria. Best summer blooming white.

Pink Killarney. The great Irish Rose; of robust growth and very free-blooming; the flowers are large, the buds are very long and pointed. A delicate shell pink.

White Killarney. Identical with above, except color, which is pure white.

Ophelia. Clear, bright salmon, often deepening toward golden pink; wonderfully fragrant, with long, pointed buds and stiff stems.

Mrs. Charles Russell. (Called Russell Beauty). A strong growing rose. Foliage heavy and leathery, inclined to slightly curl on the older wood; is almost mildew proof. The bud is

fully as large as American Beauty, but longer and pointed, and opens into a flower of unusual beauty. The color is a bright rose pink, deeper in the center. 25c and 50c each.

Milady. Similar to Richmond in color, but far richer in the bud. Large and double. In form and fragrance it resembles Gen. Jacqueminot.

White Maman Cochet. Identical with Maman Cochet except in color, which is pure white.

Richmond. Strong growers; flowers are large and pointed, beautiful rich crimson; rather single in hot weather, but if cut in tight bud will keep well and open out very beautiful.

Columbia. The Rose of all Roses, beautiful, clear, glistening pink, exceptionally strong grower, long stems, keeping qualities are very good. One of the best of summer flowering roses.

Premier. Deep, rose pink and very free flowering. Large size, good keeper. 25 cents.

Golden Ophelia. Similar in growth with Ophelia. Color, clear golden yellow. 25 cents.

White Ophelia. Delicate peach shading to white in growth like Ophelia. 25 cents.

PRICES OF ALL

TEA AND EVERBLOOMING ROSES

Except where noted, first size, 15 cents each, \$1.50 per dozen; second size, 25 cents each, \$2.50 per dozen. Our selection, ten strong plants from 3-inch pots, especially suited for summer bloom, for \$1.75, by express. These will give you more satisfaction than \$3 invested in cheap little roses.



BABY RAMBLERS

All perfectly hardy and wonderful blooming qualities. Grow about 24 inches high, are ideal for bedding out as they flower almost continuously. Flowers in clusters like Crimson Rambler.

Pink Baby Rambler. Clear rosy pink, equal in growth to the red.

Red Baby Rambler. Plant vigorous, foliage dark and glossy. Flowers rich crimson.

Jessie. An ideal Rose, possessing bright green foliage exempt from mildew, with a bushy branching growth; bright cherry crimson.

Baby Tausendschoen. Similar to the climbing variety, its charm lays in the variable coloring, changing from white to shades of pink. **Price of Baby Ramblers; small plants, 25 cents each; large size, 50 cents each; extra large specimens, \$1.50 and \$2.00 each.**

ON ORDERS TO BE MAILED ADD 10% FOR POSTAGE

HARDY HYBRID PERPETUAL ROSES

These are considered the most valuable of all the Roses. Their large flowers are very fragrant and of all colors known to the Rose. For permanent beds in northern and middle states, nothing can surpass them. We have listed only the varieties that are best and most hardy, and know they will give satisfaction to our customers.

Knowing that there is a greater loss of Hardy Roses than any other dormant plant, it shall be our earnest endeavor to supply our customers with the very best plants possible, guaranteeing them to be in good condition when they leave our hands. We offer this year pot grown plants only in Hybrid Perpetual. Too much loss with dormant stock.

HOW TO PLANT—VERY IMPORTANT

When planting, care should be taken to set plants deeply, planting them at least two inches below first point or branches and pounding the soil firmly around the roots. Don't crowd the roots, but dig a good, large hole, spreading out the roots; work the soil around the roots and pack firm as you fill the hole. When about two-thirds full of soil, give thorough watering, then when water soaks away, fill up the hole and firm the soil with your boot. Never for an instant expose the roots to the hot sun. If weather is very warm, protect the dormant tops with straw, sacking or other protecting material, until the tops swell, gradually accustoming them to the light and air. By carefully observing above you will have no trouble to make your dormant plants thrive, where by careless planting and after-care, one-half will die.

Winter Protection for Rose Plants. This may be done with material most convenient at hand, such as leaves, straw, light manure, street sweepings, pine and cedar boughs, etc. Large Rose bushes will stand several degrees of frost and the covering should not be put on until winter has set in.

How to Make Roses Bloom. In the axil of each leaf is a latent bud. Should the long, strong shoots or branches be placed and kept in a horizontal position, each latent bud will produce many flowers. Cut wooden hooks and peg the long, straight shoots firmly to the ground. These branches will not only flower, early and late, but will make robust wood, which can be treated in the same manner the following spring. Monthly and Hybrid Roses can thus be made to bloom continuously.

When to order. Place your order early. Don't wait until late and expect especially selected stock, unless you buy pot-grown plants.

Suckers. Always remove any suckers that come up at side of plants—they are from the root graft of the rose, and they will not bloom and only rob the vitality of the plant.

Coquete des Alps. White, tinged with carmine. Very fine, free bloomer.

Frau Karl Druschki. One of the finest pure white roses. Makes splendid buds and immense white flowers, 4 to 5 inches across.

General Jacqueminot. Rich, velvety, crimson, changing to scarlet crimson. Very fragrant.

Magna Charta. Extra large, full flowers; very double, clear rose, blushed with carmine.

Mme. Plantier. Grows in a very fine, bush form and produces flowers in great abundance in June. Pure white.

Mrs. John Laing. Beautiful soft pink, delicious fragrance; of exquisite shape; very large and double.

Paul Neyron. Large, deep shining pink. It is a good, strong grower.

Prinze Camille de Rohan. Rich, dark velvety crimson, passing to maroon, shaded black.

Ulrich Brunner. It is of a rich, glowing crimson scarlet color. Free, continuous bloomer.

PRICE OF HARDY ROSES

Two year old pot grown on own roots. April and May delivery. 80 cents each; \$9.00 per dozen.

One year old, own root plants, pot grown, April, May and June delivery, 30 cents each, \$3.00 per dozen.



Magna Charta

ROSA RUGOSA

The lovely Ramanas or Rugosa Roses are sturdy bushes, 3 to 5 feet in height, and are covered with glossy green foliage and clusters of beautiful single flowers, which emit a fine odor. They bloom continuously and are covered during autumn with bright red pods.

Alba. White. **Rubra.** Red.

C. F. Meyer. Clear, silvery rose; large and fragrant. Price 75 cents each.

HARDY YELLOW ROSES

Persian Yellow. Perfectly hardy. Flowers double, full and deep golden yellow in color; finest hardy yellow rose. Strong two-year-old plants, 80 cents.

MOSS ROSES

A class of Roses which are much admired. The beauty of the flowers consist in the delicate mossy covering which surrounds the bud.

Blanche Morea. Pure white, sometimes shaded with rosy blush.

Salet. Light rosy pink; extra free bloomer.

Crimson Globe. Dark crimson; best in its class. 75 cents each.

HARDY CLIMBING ROSES

This class of Roses is much esteemed for training over arbors, porches, fences and other objects. They blossom profusely, the wealth of flowers almost covering the branches. Very little in the way of pruning is necessary, and the plants are perfectly hardy.



Dorothy Perkins

Dorothy Perkins. The best of all, strong, vigorous growth. Flowers are borne in clusters, of a beautiful shell pink, full double, and of a large size for a cluster Rose.

White Dorothy Perkins. A seedling of Dorothy Perkins having every desirable attribute of its parents and bearing magnificent clusters of gleaming white flowers.

Crimson Rambler. Everybody knows this Rose now, because none can help remembering it if ever a good plant in bloom meets the eye. Magnificent and hardy everywhere.

Flower of Fairfield. Perpetual flowering Crimson Rambler. Its flowers, which are produced in profusion, are of a fine, crimson color. The growth is vigorous, flowering freely.

Baltimore Belle. Your yard is not complete without this grand Rose. Will grow 15 feet in one year, and be covered with clusters of large double flowers of a pale blush color.

Prairie Queen. A favorite everywhere. If you want a Rose for your porch, this is the one. Bright red, changing as flower opens to deep pink.

Tausandschon. Means, "Thousand Beauties," and is a very appropriate name for this great novelty. The color runs from delicate rose through shades of bright rose and carmine with white, yellow and other tints.

PRICE OF CLIMBING ROSES

Small plants from pots, 25 cents each, 4 for \$1.00; two-year-old outdoor grown, 60 cents each.... 6 for \$3.25.

For special collections of Hardy Climbing Roses see page 38, Collections G and H.



Ophelia Rose
(See Page 25)

SANSEVIERA ZEYLANCA

The leaves grow to a length of 3 to 4 feet and are beautifully striped crosswise, with broad white variegation on a dark green ground. Price of strong, healthy growing plants, 20 cents each, \$1 for 6; large size, 50 cents each.

**VINCA**

This great window-box and hanging-basket plant increases in popularity each year.

Major Variegata. A beautiful variegated trailing plant. Leaves glossy green, broadly margined with creamy white; flowers blue, 15 and 25 cents each. \$1.50, \$2.50 per dozen.

Extra large, 40 cents each, \$4.00 per dozen.

Green Variety. Similar to the variegated, but leaves beautiful dark green. 10 and 20 cents each. \$1.00 and \$2.00 per dozen.

VIOLETS

The Violet is so well and favorably known that an extended description of its characteristics is hardly necessary.

Princess of Wales. Large single flowers of true blue. Strong, stiff stems; fine for cutting; intensely fragrant. 15 cents each.

SWAINSONIA ALBA

Spikes of pure white flowers from 4 to 6 inches long in greatest abundance the entire year. Resemble small pea. Last well when cut. 15 cents each, 50 cents for 4.

SMILAX

There is no climbing plant in cultivation for winter use that surpasses this in the graceful beauty of its foliage. It is indispensable for cut flower work and its hard texture enables it to be kept without wilting for several days after being cut. Of no use outside in summer, 10 cents each; large size 20 cents each.

SALVIAS

The Salvias now rank with the geranium in importance as a bedding plant. These French varieties are especially valuable on account of their dwarf and compact habit, and coming into bloom in mid July.

Clara Bedeman. Tall, upright grower; spikes grow erect.

Fireball. Dwarf, compact habit, very free flowering. Flowers brilliant scarlet.

PRICE OF SALVIAS: First size, 10 cents each, \$1.00 per dozen, \$6.00 per 100. Second size, 15 cents each, \$1.50 per dozen, \$10.00 per 100; third size, 25 cents each, \$2.00 per dozen; \$16.00 per 100.

**VERBENA**

The Verbena is one of the prettiest and most popular of the flowering plants suitable for forming beds on the lawn. It commences to flower and spread from the first day the plants are set until late in the autumn, every day becoming better and more handsome. We have a splendid stock this year. Colors are white, blue, purple, pink, rosy crimson, red maroon, striped scarlet, dark red, etc. 75c per dozen. Large size, \$1.00 per dozen.

HARDY PLANTS, SHRUBS, VINES, ETC.

(Ready for shipment April 15 to May 1. Send us your orders as early as possible.)

Nothing is more beautiful on the lawn or in flower garden. Our stock is very large and fine and we feel sure that they will give our customers satisfaction in every way. Every variety that we list, we consider perfectly hardy here—even in exposed situations. There is nothing which so quickly and for so little cost adds to the beauty and cheerfulness of the surroundings as an assortment of hardy shrubs.

BUCKTHORN

Two to three feet. 40c each. \$4.00 per dozen.

ALMOND

Very early flowering. Blooms very double and about one inch across. Double White and Double Pink. 85c each.

CALCANTHUS

Florida. (Flowering Shrub.) A very desirable shrub with chocolate-colored flowers of delicious fragrance in June. 40c each.

CHIONANTHUS VIRGINICA

(Fringe Tree)

A tree-like shrub, almost hidden in the spring by a thick mist of fragrant, drooping lavender flowers, very ornamental. 75c each.

FORSYTHIA (Golden Bell)

Early spring flowering; the flowers are yellow, drooping and appear before the leaves. 40c each.

BARBERRY, THUMBERGI

Where a low, dwarf, deciduous hedge is wanted, nothing equals this beautiful Barberry. It is of spreading habit, growing extremely thick from the base, and requires but little pruning to keep it in shape. The leaves are small light green, and toward fall assume rich, brilliant colors, the fruit or berries becoming scarlet. (NOTE—This is not the variety that causes rust on grain.) Absolutely hardy in all parts of the country. 12 to 15 inches, \$1.50 per dozen, \$10.00 per 100; 15 to 18 inches, bushy, 35c each, \$3.50 per dozen, \$25 per 100.

LONICERA

(Bush Honeysuckle)

Morrowii. A neat shrub of symmetrical growth. Red flowering, 40c each; white flowering, 50 cents each.

RIBES

(Flowering Currant)

The old fashioned, large growing, flowering variety. Grows 6 to 8 feet high. 40c each.

RHUS (Sumac)

Glabro laeiniata. (Cut-leaved Sumac.) Of a striking appearance; the leaves are deeply cut, resembling ferns, the color of which is dark green, changing to a rich red in autumn. 60 cents each.

Fern Leaf. 12 to 18 inches, 30c each, \$3.00 per dozen.

SABUCUS (Elder)

Aurea. Leaves are bright yellow, giving best effect when planted with other shrubs; blossoms resemble common elder and appear in July. Very hardy. 40c each.

SYMPHORICARPOS (Snowberry)

Racemosus. A well known shrub with small pink flowers and large white berries that hang on the plant throughout part of the winter. 10c each.

Vulgaris. (Red-Fruited.) A shrub of very pretty habit. Foliage, flowers and fruit small; fruit red; hangs winter. 40c each.

CORNUS (Dogwood)

Siberia. Red-branched. Tree-like shrub, with white flowers in June, followed by red berries. 40c each.

Cornus Variegata. One of the best of variegated ornamental shrubs, should be planted in clumps for shrubbery to be seen at its best. 40c each.

DEUTZIA

One of the most popular shrubs; blooms in June and July.

Gracilis. Perfectly hardy; a profuse bloomer; delicate, small white flowers. 50c each.

Pride of Rochester. Double, white, in spikes 50 inches long. 50c each.

HIGH BUSH CRANBERRY

Viburnum Sterilis. Very effective in large clusters of shrubbery, 30c each. \$3.00 per dozen.

VIRBURNUM STERILIS

(Snowball)

The old, well-known snowball; hardy everywhere. 75c.

SPIREA

All the Spireas bloom with riotous extravagance which makes them quite striking. Their individual style, color and habits of growth differ so markedly, that a collection of varieties will insure bloom the entire season and still evade the monotony of repetition.

Van Hauti. The most showy of all Spireas and one of the best flowering shrubs in cultivation. The plant is a rather tall, upright grower, with long, slender branches that droop gracefully with their weight of foliage and flowers. Flowers pure white in great clusters and whorls forming cylindrical plumes two feet long. Few shrubs present a more charming appearance. Blooms freely when very small. 12 to 18 inches, \$1.50 per dozen, \$10.00 per 100; 18 to 24 inches, 25 cents each, \$2.50 per dozen; \$18 per 100; 24 to 30 inches, bushy, 40 cents each, \$4.00 per dozen, \$30.00 per 100; extra large, 75 cents each, \$7.50 per dozen; \$60 per 100.

Billardi. Pink flowers, in bloom nearly all summer.



mer. Fine for planting in masses. 30c each, \$3.00 per dozen.

Golden Leaved Aurea. Foliage golden tinted, very effective massed or among other shrubs. Flowers are white. 40c each.

Antony Waterer. A bright crimson. It is also dwarf and dense in growth. When scarcely 12 inches high it begins blooming and thereafter is seldom out of flower. Grows 3 feet high and wide, and will be covered with flower heads 6 inches across. It is also perfectly hardy and will stand the most severe winter with slight protection. Small size, 30 cents each, \$3.00 per dozen; large size, 50c each.

Thumbergi. Forms a dense feathery bush; foliage in autumn changing to bright red and orange. Flowers pure white, borne in feathery masses in June. 40c each.

Douglasii. Tall upright growth, narrow oblong leaves. Spiked of deep rose color, flowers in July. 35 cents.



Hydrangea Paniculata Grandiflora

DOUBLE FRENCH LILACS

- Chas. X.** A strong, rapid-growing variety with large, shining leaves; trusses large, of reddish purple. 75 cents each.
- Josikaea.** Dark lilac-colored flowers; blooms in June. 75 cents each.
- Madame Lemoine.** Double, pure white; borne in large clusters. 75 cents each.
- Michael Bushner.** Beautiful deep purple. 75 cents each.
- Assorted French Lilac.** We have a quantity of best variety, which names have been lost. Are just the thing for a hedge. Price 50c each, \$5.00 per dozen.

LILAC

- Old-fashioned purple varieties, 35c each.
Old-fashioned white varieties, 35c each.

SYRINGA OR MOCK ORANGE

- Coronarius.** Beautiful free-flowering shrubs, bearing large panicles of pure white, fragrant bowers; very strong growers. 40 cents each.
- Lemoine.** Dwarf, sturdy, erect growth, creamy white, fragrant flowers. 50c each.

HYDRANGEAS

- Paniculata Grandiflora.** Tens of thousands of these notable summer and autumn-flowering shrubs have been sold the past few years and the demand is still good. They are absolutely hardy, grown in any soil, and bloom the same year they are set out. They flower abundantly, bearing immense panicles of bloom, white at first, and turning to rose in autumn. To make a fine specimen, the soil should be as carefully prepared as for any shrubs. Annual shortening of the branches tends to increase the size of the

flowers. 12 to 18 inches, 40 each, \$4.00 per doz.; 18 to 24 inches, 60c each, \$6.00 per doz.; 24 to 30 inches, 75c each, \$7.50 per doz.; extra large and heavy, \$1.00 each, \$10.00 per doz.

Hydrangea. Tree Form.

Branched like a little tree, very ornamental, 3 to 5 feet high, \$1.50 each.

New Hydrangea Snowball.

This magnificent hardy American shrub is the very finest addition to this class of plants found in many a year. The blooms are of large size, of pure snow white color, and the

foliage is finely finished lacking the coarseness found in Paniculata. One of its most valuable characteristics is its coming into bloom just after the passing of all the early shrubs, while its long season of bloom, from early June thru August, renders it doubly valuable to every owner of a garden; perfectly hardy, standing 20 degrees below zero. The form of the panicle is much like that of Hydrangea Hortensis. 35 cents each, 3 for \$1.00, large two-year-old plants, 75 cents each.

WEIGELIAS

- Candida.** White flowering variety, flowers throughout the summer. 50 cents each.
- Eva Rathke.** Brilliant crimson, flowering throughout the summer. 50 cents.
- Rosea.** Rose colored flowers, in June and July. 45 cents each.
- Variegata.** Leaves beautiful, margined pure white. Flowers pink. 50 cents each.



Hydrangea Snowball

HARDY CLIMBING PLANTS

If you have a vine covered fence of Woodbine, Bittersweet, Honeysuckle, or other vine—try a Trumpet Vine at each post or regular intervals. The effect is very striking and attractive.



Clematis Paniculata

CLEMATIS

They are perfectly hardy and of rapid growth, attaining a height of 15 feet and blooming the greater part of the summer and fall. The effect produced by a well-grown plant when in bloom is grand.

SPECIAL NOTICE. On account of the brittleness of the bark on the Clematis, it cracks very easily and many people believe the plant to be permanently injured when such is not the case. We wish to say also, that we **examine all plants** carefully before shipping to see that they are in good condition and if they die after being planted, as must sometimes happen, we do not agree to replace them.

CLEMATIS, SMALL FLOWERING CLEMATIS PANICULATA

Paniculata. One of the very best vines to grow near the house, as they are free from insects, and remain neat looking thruout the whole summer. It will grow against any outbuilding, trellis, over any place, up a pole, pillar or stump. The flowers are of medium size, pure white, borne in immense sheets, and of a delicate and penetrating fragrance, appearing late in September, at a season when few other vines are in bloom. The extreme rapidity of growth, the showy foliage, beautiful and fragrant flowers, the hardihood, serve to make this one of the very choicest of recent productions. We have a very large stock of pot-grown plants. Small 3-inch pot plants, 35 cents each, 3 for \$1.00; two-year-old, 75 cents each.

CLEMATIS, LARGE-FLOWERING VARIETIES

Ville de Lyon. Magnificent brilliant crimson.

Herril. Large size, single, pure white.

Jackmanii. The finest of all. We offer this year pot grown plants only. They are not as large as field grown but are sure to grow. 75c each.

AKEBIA

Quinata. A beautiful hardy climbing vine. It often grows 15 feet in a year and produces throughout the season large clusters of fragrant flowers, resembling Forget-me-nots. Two-year-old, strong plants, 60c each.

ARISTOLCHIA SIPHO

Dutchman's Pipe. Brownish flowers resembling a miniature pine; splendid for archways or verandas. Extra strong, by express, \$1.20 each.

APIOS

Tuberosa. Clusters of rich, deep purple flowers, which have a strong violet fragrance. 10 cents each.

BIGNONIA

(Trumpet Vine)

Radicans. (Trumpet Creeper.) Flowers are large, orange scarlet. Very useful for covering undesirable places, as it is a strong grower and very hardy. 35 cents each.

CINNAMON VINE

A fine, hardy climber. Flowers of a cinnamon fragrance. Therefore called "Cinnamon Vine." 15 cents each.

LONICERA

(Honeysuckle)

Hallianna. (Hall's Honeysuckle.) Color white, changing to yellow; very fragrant. Blooms from June to November.

Ponica. (Scarlet Trumpet.) Strong, rapid grower. Blooms very freely the entire season. Bright red trumpet-shaped flowers.

Flava. (Yellow Sweet.) Bright yellow and orange; fine for porches and pillars.

Price of Honeysuckles; strong, outdoor-grown plants, 50 cents each.

CELASTRUS SCANDENS

(Bittersweet)

Handsome, glossy foliage and large clusters of beautiful orange crimson fruits retained all winter. Its graceful sprays of berries make charming winter decorations, two-year-olds, 50c each.

LYCIUM

Chinesc. (Chinese Matrimony Vine.) A vigorous growing hardy climbing vine that may be used anywhere that a vine is needed for training to trellis, fence or wall. Small purple flowers and are followed by brilliant scarlet berries. 40 cents each.

WISTARIA

This is one of the most popular hardy vines, growing very rapidly, climbing to a height of 50 feet or more. When in bloom it is truly magnificent. It flowers in early spring in long, drooping racemes resembling in size and shape a bunch of grapes.

Magnifica. Pale blue. 50 cents each.

Simensis Alba. Pure white, sometimes tinted light blue. 75 cents each.



Japan or Boston Ivy (*Ampelopsis Veitchii*.)

THE JAPAN OR BOSTON IVY

(*Ampelopsis Veitchii*.) The grandest hardy climbing vine in existence for covering houses, churches, schools, etc. Its glossy ivy leaves overlap each other and its long, delicate young shoots stretch up the walls with free and rapid growth. The tendrils at nearly every point cling firmly to the smoothest surface of rock or wood. The glossy leaves assume in the autumn the most beautiful tints of scarlet and crimson. The handsomest vine of scarlet for growth on brick walls. One-year out-door grown, 40 cents each, 6 for \$2. Two-year-old pot grown, 60c each, \$6.00 per dozen.

Ampelopsis Quinquefolia. (American Ivy, Woodbine, Virginia Creeper, etc.) Deeply cut leaves which turn to a beautiful crimson in fall; fine for covering trees, rocky slopes, walls, etc. Two-year, 30 cents, each, 4 for \$1.

Ampelopsis Englemanni. Similar to above but with smaller, denser foliage. Will cling to stone or brick. 40 cents each.

HARDY PERENNIAL PLANTS

Those that die to the ground every year.

No money you can invest will give you such pleasure and permanent returns as that you invest in Hardy Plants. Once planted they stay, growing in beauty every year. Our stock of these is large and complete and covers such a wide range of variety that you can select what will give you a complete succession of flowers the entire summer and fall. The small size are mostly pot-grown. The large size, one year, field grown.

AQUILEGIA (Columbine)

Coerulea. Blue.

Chrysanthea. Golden yellow.

Alba. Double white.

15 cents each, 50 cents for 4.

ALYSSUM ARGENTUM

Dwarf, golden yellow. 15 cents.

ARABIS ALPIMUS

Dwarf plant, for edging. 15 cents each.

ANTHEMIS KELWAYI

Hardy, yellow Marguerite. 15 cents each.

ACHILLEA

The Pearl. Flowers are purest white. Fine for summer planting. Small plants, 15 cents each. Strong clumps, 25 cents each.

Rosea. Dwarf grower, feathery clusters of rose colored flowers.

ANEMONE

Queen Charlotte. Large double pink flowers.

Whirlwind. Large white; double flowers, 36c each.

DIGITALIS (Foxglove)

A handsome plant of stately growth. 15 cents each, clumps 25 cents each.

CHRYSANTHEMUM MAXIMUM

Large Daisy-like, single flowers. 15c each.

FUNKIA (Day Lily)

Lanceifolia. Blue.

Variegata. Green and white foliage; blue flowers.

Alba. Pure white.

25 cents each; large size, 40 cents each.

GYPSOPHILA (Baby's Breath)

Beautiful, fairy-like white flowers. 10 cents each, 25 cents for 3; clump, 25 cents.

GEUM

Heldreicht. Pretty border plants, producing snowy, bright orange-colored flowers, 15c each, 50c for 4.

LILY OF THE VALLEY

Strong outdoor grown clumps, 25 cents each, 5 for \$1.00.

LAPINUS

Tall fox-glove like spikes of flowers. 25c each.

LYCHNIS

Bright scarlet, dense flat heads, bloom in August. Two feet high. 30 cents each.

DIANTHUS

Very desirable, sweet-scented, low-growing, early blooming, hardy pinks. Assorted colors. 10 cents each; clumps, 25 cents.

BOLTONIA

An Aster or Daisy-like plant, very useful for cutting. Remains in bloom a long time. Flowers white with yellow center. Plant in open. 15 cents each, 4 for 50 cents, large clumps, 25c.



Coreopsis lanceolata

COREOPSIS

Lanceolata. Begins to bloom early in June and continues until frost. Is continually one mass of yellow Daisy-like flowers. 15 cents each, 40 cents for 3; large clumps, 25 cents each.

DELPHINIUM (Larkspur)

Kelway's New Hybrids. Flowers spikes stiff and strong; flowers double and single, shading from light blue and lilac to the indigo and purple shades, often with strange orchid-like markings. Plants bloom twice, often three times in a season. July and August. 25 cents each.

Formosa. Deep blue, white eye; clumps, 25c.

Album. White. 25 cents.

TRAILING MYRTLE

A beautiful trailing plant, largely used for cemetery planting; beautiful evergreen, glossy leaves forming a mat over the ground. 15 cents each, 50 cents for four; large plants, 30 cents each, 4 for \$1.00.

HARDY CHRYSANTHEMUMS

We have them in the shades of white, yellow, bronze and pink. 15 cents each, 4 for 50 cents, 8 for \$1.00.

EUPATORIUM

Strong growing border plants bearing minute white flowers in dense heads. 20 cents each.

FERNS, HARDY

Large growing varieties, 30 cents each, 4 for \$1.00.

CAMPANULA (Canterbury Bell)

Alba. Large, saucer-shaped flower; pure white in color.

Pyramidalis. Dark blue, cup-shaped flower.

Carpatia Alba. Dwarf habit; small white bells.

Rosea. Large cup shaped flower, clear rosy pink, 20 cents each, 6 for \$1; large size 40c each.

HOLLYHOCKS

Double Pink, White, Yellow, Red. Small plants, from pots, 15 cents each, \$1.50 per dozen.

Allegheny Hybrids. (Everblooming.) Small pot grown plants, 20 cents each; 3 for 50 cents.

SWEET WILLIAMS

Beautiful for solid beds or masses. Assorted colors, 15 cents each, 4 for 50 cents.

YUCCA

Filamentosa. Sub-tropical looking plant, with long, narrow leaves that remain green the entire summer. It throws up a long flower stem in the summer of 3 or 4 feet high, bearing a large spike of creamy white bell-shaped flowers that retain their beauty a long time. Strong roots, 40 cents each.

PYRETHRUM

Blooms in May and June. Colors range from pure white to crimson

Assorted colors, 35c each, 3 varieties, \$1.00.

HARDY ASTERS

These are among the showiest of all the hardy perennials, coming in bloom in the fall.

Cordifolius. Dark blue.

Queen. Dwarf, white.

St. Egwin. Bright pink.

15 cents each; 4 for 50 cents; field clumps, 30 cents each.

GIANT MALLOW MARVELS

Perfectly hardy perennial blooming for several months in this climate; flowers are large and graceful, averaging about 4 inches in diameter, with three or more rows of petals of purest whiteness on the single strong, wiry stem. Small plants 15 cents each, 4 for 50 cents; large clumps, 35 cents each.

GAILLARDIA

Grandiflora. Begins to flower in June, continuing one mass of bloom the entire summer. Flowers 3 inches in diameter; center dark reddish brown, petals vary from scarlet and scarlet orange to crimson. 15 cents each, 50 cents for 4; clumps, 30 cents.

LOBELIA

Cardinals. (Cardinal Flower.) One of the showiest things in the garden. Intense cardinal red flowers arranged in stock spikes 15 to 18 inches long to keep the plant afloat thruout August and September. 40c each.

HELIANTHUS

Plenus. Flowers from 2 to 4 inches in diameter, as double as any double Dahlia. Color, a bright golden yellow. It should have a sunny position and a rich soil. Each, 25c.

HARDY HIBISCUS

Crimson Eye. Large clumps, 40 cents each.

LYCHNIS HAAGEANA

Very ornamental plant, growing about one foot high, orange scarlet flower. 25c each.

RUBECKIA

Golden Glow. A glorious hardy plant bearing double yellow Dahlia-like flowers. 10 cents each, 25 cents for 3; \$1 per dozen.

PINK

They are more dwarf than carnations, growing only about one foot in height.

Alba Fibrata. Fine, hardy, white pink.

Colored Varieties. We have a fine assortment of colored varieties.

Small size, 20 cents each; 6 for \$1.00. Mixed seedlings, 10 cents each, \$1.00 per dozen.

PENTSTEMON

Gloxinia-like flowers, long spikes in various colors; 25 cents each.

PLATYCODON

Grandiflora. Bell-shaped flower, white and blue, 10c each; large plants, 20c each.

STATICA LATIFOLIA

Beautiful feathery flowers. Can be dried for winter bouquets. 20 cents.

**IRIS**

Japanese. The finest of all. Thrives best in damp location, flowers in large size and beautiful range of colors, from pure white to deepest purple. Divided clumps, 30c each.

Siberian. Similar to the German Iris, but smaller flower. Color, deep blue, very free.

Fleur de lis or German Iris. Familiar and beloved flowers of spring. Established plants produce 50 to 100 spikes of bloom.

Mad. Chirean. White bordered clear blue.

Florentina Alba. Pure white.

Darius. Yellow, margined white.

Queen of May. Soft rosy lilac.

Honorable. Rich golden yellow, lower petals mahogany brown.

Mad. Pacquette. Bright rosy claret, early.

Pallida Speciosa. Lavender shaded lilac.

Mrs. H. Darwin. Clear waxy white violet veins. 20c each, 6 for \$1.00. All colors mixed, 10c each, \$1.00 per dozen.

Special offer on Iris, eight varieties of German and Siberian, strong clumps for \$1.00.

STOKESIA

Cyanea. This plant grows from 19 to 24 inches high, bearing freely from early July until frost, its handsome lavender blue centaurea-like blossoms. 15c each; clumps, 25c.

SWEET WILLIAMS

Beautiful for solid beds or masses. Assorted colors, 15 cents each, 4 for 50 cents.

PYRETHRUM

Blooms in May and June. Colors range from pure white to crimson. 20 cents.

PERENNIAL POPPIES

Very satisfactory for the garden. Good, deep rich soil, open situation.

Iceland. Dwarf habit; scarlet.

Oriental. Crimson scarlet; tall.

Nudicaule. Bright yellow.

Mixed price of poppies. 25 cents each; 4 varieties for 60 cents.

BURBANK'S SHASTA DAISIES

Perfectly hardy perennial blooming for several months in this climate; flowers are large and graceful, averaging about 4 inches in diameter, with three or more rows of petals of purest whiteness on a single strong, wiry stem. Small plants, 10 cents each, 25 cents for 3; large clumps, 25 cents each.

HARDY PHLOX

No plants give better satisfaction to amateurs than the Hardy Phlox. They thrive in any ordinary rich soil. The ease with which they are cultivated, their entire hardiness, and the beautiful coloring, make them particularly valuable for garden planting. The wide range of colors, from pure white through all the shades of pink to deep crimson, give you a range of colors not found in any other hardy plant.



Hardy Phlox

- Widar.** Reddish violet white center.
Rheinlander. Very large salmon pink.
Prof. Virchow. Bright carmine overlaid orange scarlet.
Albion. Pure white faint red eye.
Bachante. Rose with crimson eye.
Bridesmaid. Tall white crimson center.
Coquelot. Scarlet, deep eyes.
Champ Elyse. Bright rosy magenta.
Ecloise. Tall rosy magenta lighter center.
F. Passy. Light mauve pink white center.
La Vague. Mauve, red eye.
Laus Abema. Very large pure white dwarf habit.
Mrs. P. Lingard. Very fine early white.
Rynstrom. Paul Neyron, pink.

Small plants, 15c each, 4 for 50c, 8 for \$1.00; 1 year-old plants, 30c each, 4 for \$1.00.

SPECIAL OFFER

One plant each of six varieties, our selection, one year old outdoor grown for \$1.00.

TRAILING PHLOX SUBLATA

A compact trailing growth, used for cemetery planting. Blooms early in spring. Pink and white, each 25c.

PEONIES

Once Planted They Will Last a Lifetime

Planting. An important point to observe is not to plant too deeply. The roots should be placed so that the crowns (or eyes) are covered with two or three inches of soil. Planting too deep is often the cause of shy blooming.

Plant with the southwest or west exposure.

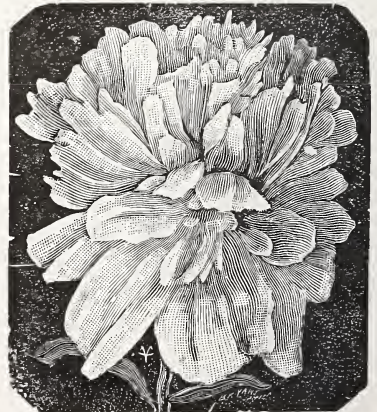
Plant as early as possible in the spring, as they sprout very quickly. If order is received too late for planting we will hold that part of order and deliver early in the fall.

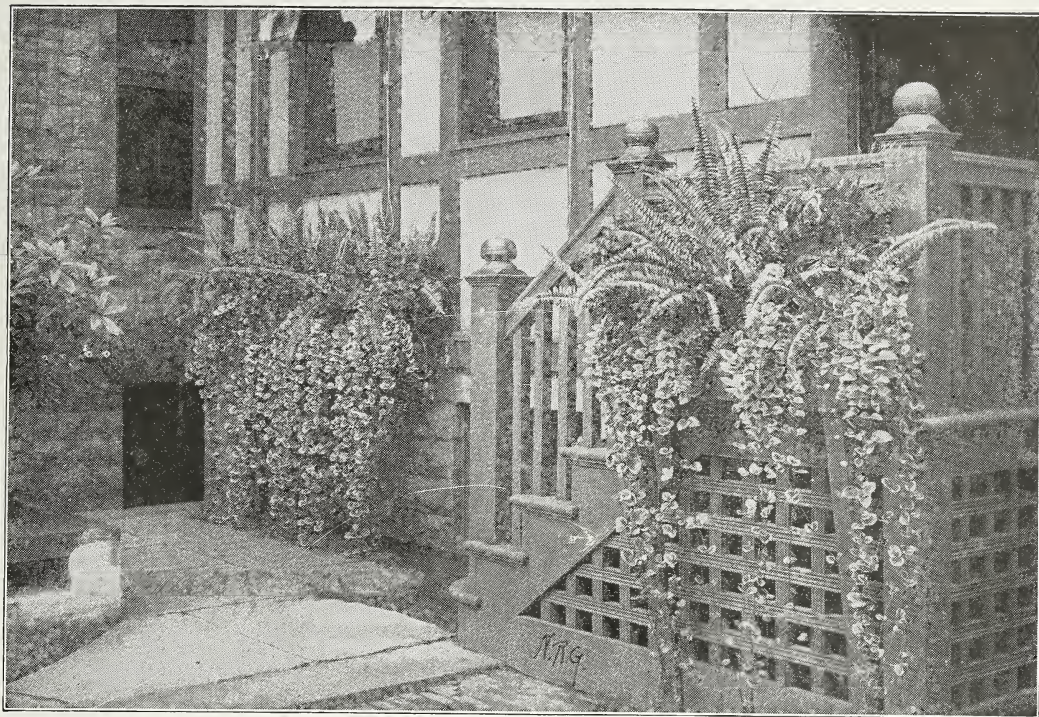
Our list contains the very best and most dependable varieties. See page 36.

SPECIAL OFFER

Three Peonies all different, strong roots for \$1.00. Or three-year-old clumps for \$2.00. 12 all different, part named varieties, strong roots for \$6.00. This collection is made up of some of the finest varieties that names have been lost and is a bargain for one who wishes to plant a row in the garden—by express at purchaser's expense. Strictly our selection varieties.

(For names and varieties see page 36)





Window Boxes of Vincas and Ferns

Porch Boxes, made of Cypress, Painted Green, Bolted together—8 inches deep and 10 inches wide. 2 ft., \$2.50; 3 ft., \$3.00; 4 ft. \$4.00; 5 ft., \$5.00.

Porch Boxes. Self watering, made of galvanized iron with liner—2, 3, 4 feet long, 12 inches wide, \$3.00, \$4.00, \$5.00 each, with frame support, \$2.50 each extra.

Vincas, Asparagus Sprengeri and Ivy Geraniums, medium size for boxes and baskets—25 cents each; \$2.50 per dozen. Large size, 35c each; \$3.50 per dozen.

Boston Ferns—25c, 50c, \$1.00 and \$2.00 each.

Geraniums—All colors for beds and boxes, \$2.00, \$3.00, \$4.00 per dozen.

Daisies—25 and 50 cents each.

Dracena Indivisa—50c and \$1.00 each.

State size of box—how much you wish to pay—and we will send you a collection suitable.

PEONIES Some of the Best Varieties that Grow

Gen. Bertrand. Pink, clove-shaped, fine bud. 40 cents.

L. Esperence. Very early light pink. 50 cents.

Officinalis Rubra. The old-fashioned very early, deep crimson. 75 cents.

Rubra Triumphant. Brilliant crimson, showing yellow stamens; large, early. 60 cents each.

Baroness Rothschild. Outer petals silvery rose, center purplish lilac. 40 cents.

Clarissa. Rosy pink, outer petals large. 40c.

Edulls Superba. Very early pink. 40c.

Isabelle arlitzky. Light rose. 50c.

Paul Neyron. Fine pink. 40c.

Francis Ortegat. Brilliant crimson, very double. 50 cents.

Fulgida. Purplish red. 40 cents.

Festive Maxima. The best known Peony. Flower of immense size, snowy white, with some red spots on the edges of the center petals. Very sweet. Early. 60c each.

Grandiflora. Bright flesh or pink, large, late. 40 cents.

Grandiflora Rubra. Rich red, of large size. 60c.

Duchess Nemours. Fine, pure white, 40 cents.



Bed of Castor Beans, Cannas, Pennisetum Longistylum, S. A. Nutt Geranium, and Mm. Salleroi Geranium, 10 Feet in Diameter

This shows what can be done if plants are grouped correctly. Extended descriptions and prices will be found under their respective heads.

CENTER—Two Castor Beans.

FIRST ROW—36 inches in diameter, 6 Cannas, 18 inches apart.

SECOND ROW—66 inches in diameter, 18 Pennisetum, 11 inches apart.

THIRD ROW—96 inches in diameter, 24 Geraniums, all alike, 12 inches apart.

FOURTH ROW—104 inches in diameter, 40 Geraniums, M. Salleroi, 8 inches apart.

Price for Entire Bed, Small Size Plants—\$9.00; **Larger size plants, \$13.50.**

Larger size beds, price on application. In ordering state color of Geraniums wanted.

Castor Beans—

Small plants20c each, 4 for 75c

Large plants35c each, 3 for \$1.00

Cannas—

Small plants15c each, per dozen, \$1.50

Large plants25c each, per dozen, \$2.00

Pennisetum—

Strong plants15c each, dozen \$1.50

Geraniums—

Small size10c each, per dozen, \$1.00

Medium size20c each, per dozen, \$2.00

Large size30c each, per dozen, \$3.00

Geraniums, Mad. Salleroi—

HARDY PERENNIAL PLANTS—Those That Die to the Ground Every Year.

We have Perennials in large assortment (See Catalog.) All one-year-old plants, growing in 4-inch pots—can be set out all spring and summer and will give immediate effect.

Special offer—12 assorted for \$2.75; 25 for \$4.50; 50 for \$8.50.

SURPRISE COLLECTION OF BEDDING PLANTS

READY AFTER JUNE 1. Every year we have a surplus of some special varieties of bedding plants, such as Roses, Cannas, Geraniums, etc. Those who have a bed they wish to fill late in the season will find this collection of exceedingly liberal value. Orders booked at any time and filled in rotation in June, \$1 for 18; \$2.50 for 50; \$4.50 for 100, our selection of varieties.

A BED OF COLEUS

For the lawn, for every purpose of mass planting Coleus are popular, effective and cheap.

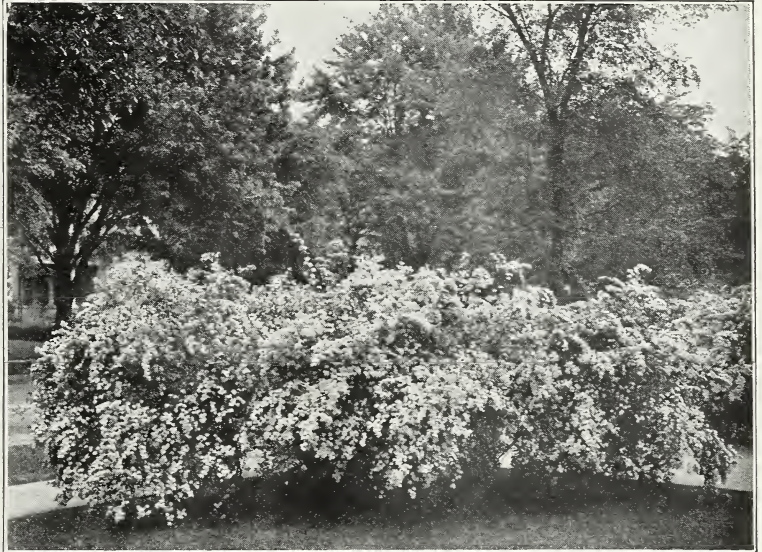
Prices of Coleus. 10 cents each, 4 for 25 cents; 12 for 65 cents. Our selection, 5 cents each, 50 cents per dozen; \$3.50 per hundred. After June 10, \$2.50 per 100.

SPECIAL NOTICE

All orders to go by mail must have postage added to catalog price of plants. **10 cents for each \$1.00 or less.**

SPIREA VAN HOUTI

Van Houti. The most showy of all Spireas and one of the best flowering shrubs in cultivation. The plant is a rather tall, upright grower, with long, slender branches that droop gracefully with their weight of foliage and flowers. Flowers pure white in great clusters and whorls forming cylindrical plumes two feet long. Few shrubs present a more charming appearance. For prices see page 28.



Improve your grounds. See the beautiful effect by planting a few shrubs and flowers. We will be very glad to aid you in your selection. Send a plot of your grounds.



SHRUBS

For mass planting nothing takes the place of shrubs. We carry in stock large quantities of all the best standard varieties for this locality. Description and prices will be found under their respective heads.

GOLD FISH AND BIRDS

We carry large quantities of these at our store at 204 Main street. Prices of same will be given on application. When in the city call and see them.

Bancroft's Money Saving Collection of Popular Plants

These collections are put up for those who want good small plants, yet do not feel able to pay the higher prices charged for those named in catalogs. We sell many thousands money saving collections yearly, to satisfied customers. Try them. We know you will be more than pleased.

All orders for our Surprise Collections will be acknowledged and entered on our books as received. We usually commence to send out the Collections of Tender Plants about May 1st, and Hardy Plants the latter part of April. We cannot promise to send them out before these dates. We cannot permit any change in the composition of these collections or in the time of delivery. Always order by letter.

All collections are strictly our selection of varieties.

Combine your orders, having them shipped by express, and you will be more than pleased with the splendid value you receive. The cost is so small and the extra value of the plants will more than compensate you for the small amount of express charge YOU will have to pay.

Hardy Plant Collections

- A—Five Hardy Perennials, all different, 1 year old for 60 cents.
- B—Seven small Hardy Perennials, all different, for 50 cents.
- C—Four Choice Hardy Phlox, our selection, for 50 cents.
- D—Twenty Pansies, large plants, all ready to bloom, for \$1.00.
- E—Four two-year-old Hardy Roses, for \$2.50.
- F—Four named Peony varieties, our selection, for \$1.50.
- G—One each, Crimson Rambler, Dorothy Perkins, Baltimore Belle, Prairie Queen, Strong two-year-old plants, for \$2.00.
- H—Pink, White, Yellow and Red Ramblers, Nice pot grown plants, the four for \$1.00. Strong two-year-old plants for \$2.00.
- I—One each of Ampelopsis Veitchii, Clematis Paniculata, Cinnamon Vine, Honeysuckle; all strong plants for \$1.25.
- J—For \$2 we will send 6 Hardy Ornamental Shrubs, our selection of sorts, 2 to 3 feet high.

Tender Plant Collections

- K—Eight Tuberoses, largest size, 50 cents.
- L—12 fine Coleus. Fine plants, all different, for 50 cents.
- M—Nine choice Salvia. Plants from two-inch pots for 50 cents. Of 12 from 3-inch pots for \$1.20.
- N—Six different varieties of the everblooming Cannas for 75 cents.
- O—Four Dahlias, all different, for 50 cents.
- P—Six assorted bedding plants for 50 cents.
- Q—Ten fine named varieties Gladioli, all different our selection, for 50 cents.
- R—Six Carnations, all different shades, for 50c.
- S—Six beautiful Geraniums for 50 cents. Two-inch pots.
- T—Three good Caladium Esculentum for 50 cents, or three large bulbs for \$1.00.
- U—Ten fine large Rose plants, all ready to bloom, all different, from 3-inch pots, for \$1.50 by express at purchaser's risk. This collection will give you results.
- V—Six beautiful Everblooming Roses for 75 cents, small plants; all different colors.
- W—Eight Chrysanthemums, all different, for 50 cents.

If By Mail Add 10c for Each \$1.00 Sent.

Special Offer

Have you three friends who love flowers?

Send the names of three of your friends together with 40 cents and receive your choice of any one of these money saving collections prepaid. Any four for \$1.50 prepaid.

- | | |
|---|--|
| 1. Four varieties Cannas, dormant roots, 40c. | 6. Four flowering Begonias for 40 cents. |
| 2. Four varieties Chrysanthemums for 40c. | 7. Six assorted Bedding Plants for 40 cents. |
| 3. Five fine Coleus for 40 cents. | 8. One Asparagus Plumosus. One Asparagus Sprengeri and one Boston Fern, 40c. |
| 4. Five small Salvia Splendens for 40 cents. | 9. One Boston Fern, 1 Whitmani Fern, 1 Dwarf Fern for Fern Dish, for 40 cents. |
| 5. Four varieties Geraniums for 40 cents. | |

JOSEPH BANCROFT & SON, Lock Box 35, Cedar Falls, Iowa.

Gentlemen: Enclosed find..... for which please send me Assortment

No.....

Names and addresses of friends.

1 {	3 {
2 {	Your Name and Address {

--	--	--

Please give below name and addresses of a few of your friends who buy flowers, and whom you know would appreciate our catalogue and become our customers.

--	--	--

INDEX

Abutilons12	Day Lily32	Mignonette24
Acalpha12	Delphinium32	Moon Flower19
Achillea32	Dusty Miller24	Mock Orange30
Achyranthes24	Daisy, English16	Mellow Marvels33
Agerathums12	Daisy, Shasta34	Myrtle32
Air Plant, Japan20	Delphinium33	Moss38
Akebia31	Deutzia29	Money Saving Collections...38
Almond, Flowering29	Dianthus32	Mysotis16
Alternatheras12-24	Dogwood29	Orange19
Alyssum12-32	Dracaena16	Oxalis9
Amaryllis9-32	Dutchman's Pipe31	Pansy Geranium23
Ampelopsis32	Designs4-6-7-8	Palms23
Apios9-31	Digitalis32	Pandanus22
Aquilegia32	Elephant's Ears9	Pansies23
Aristolochia31	Easter Lily4	Pelargoniums23
Asparagus Sprengeri12	Eupatorium32	Pentstemon33
Asters24	Exocharda29	Peony35
Asters, Hardy33	Ferns20	Pennisetum22-33
Aquatrum Plants24	Fern Dishes20	Petunias22-24
Arabis Alpinus32	Ferns, Hardy20-32	Pinks33
Anthemia Kelwayi32	Feverfew16	Phlox34
Asparagus Plumosus12	Ficus16	Platycodon33
Artillery Plant24	Fish Supplies11	Poinsetta23
Aquaria Moss24	Flowering Currants29	Poppies, Hardy33
Anemone32	Forget-Me-Nots16	Primroses22
Barberry29	Forsythia29	Pyrethrum24-33
Baby's Breath32	Foxglove33	Periploca32
Bedding Plants24	Fringe Tree29	Privet31
Begonia Shrubby12	Fuchsia16	Porch Boxes35
Begonias, Tuberos-rooted.. 9	Funkia32	Porch Box Collections...35
Begonia Rex12	Giant Marvels33	Pilea24
Boltonia32	Gaillardia33	Rhus29
Browalia24	Giant Ismene9	Ribes29
Bush Honeysuckle29	Geraniums21-22-36	Roses4-24-25-26-27-28
Boston Ivy32	Geum32	Rudbeckia33
Bitter Sweet31	Gladiolus10	Ricinus24
Buddleya Varbilis19	Gloxinias9	Rubber Plant16
Bridal Bouquets5	Golden Feather24	Ribbons5
Buckthorn29	Gypsophila32	Rhodolyphus31
Birds37	Geraniums, Pansy23	Sanbucus29
Bignonia31	Gold Fish37	Salvias28
Cactus24	Hardy Shrub Collections...29	Sanseveria28
Caladium9-24	Helianthus33	Shasta Daisies33
Calcanthus29	Hedge Plants29-30	Snowball29
Callas9-12	Heliotrope16	Silk Vine32
Campanula33	Hibiscus, Hardy19-33	Smilax4-28
Canary Bird Flower24	Hollyhoek33	Snowberry (Symphoricar-
Candytuft24	Honeysuckle31	pos)29
Cannas15-16-36	Hyacinthus Candicans9	Spirea29-37
Canterbury Bells33	Hydrangeas19-30	Stokesia33
Cardinal Flower34	Hardy Climbing Plants...31-32	Sumac29
Cardinal Climber17	Hardy Perennial Plants...33-34-35-36	Swinsonia28
Carnations4-17-24	Highbush Cranberry29	Symphoricarpos (Snow-
Castor Bean24-36	Hardy Hibiscus33	berry)29
Celastris32	Iris33	Syringea30
Centaurea24	Impatiens Sultana33	Sweet William33
Chionanthus29	Ivy19-32	Statica Laifolia33
Chrysanthemums13-14	India Rubber Plant16	Summer Flowering Bulbs... 9-10-11
Chrysanthemums, Hardy32	Jardinieres20	Stevia24
Cinnamon Vine31	Lawn Grass Seed11	Tradescantia19
Clematis31	Lawn Vases11	Trumpet Creeper31
Cobea24	Larkspur33	Tuberoses11
Coleus13-36	Lantana19	Umbrella Plant17-24
Coreopsis32	Lemon19	Vases (Lawn)11
Cornus29	Lilac30	Verbena28
Crotons12	Lilles, Hardy11	Vincas28-36
Cut Flowers3-4-5-6-7-8	Lily, Day33	Violets28
Cuphea12	Lily, King9	Viburnum29
Cyclamen17	Lily of the Valley22	Virginia Creeper33
Cypherns17	Lonicera22-31	Vignonia32
Collections11-21-24-36-37-38	Lobelia24-33	Wandering Jew19
Chiffons5	Lycium31	Weigelia30
Chinese Matrimony Vine.....31	Lady Washington23	Wistaria31
Colombine33	Lychinis32-33	Woodbine33
Cerus24	Lupinus32	Window Boxes11
Cineraria24	Maderia Vine9-24	Window Box Collection11
Caragena31	Marguerite16-19	Wire Baskets20
Cupea12-24	Matrimony Vine32	Yucca33
Comba24		Zephyranthes9
Cyperus24		
Dahlias18		

SURPRISE COLLECTION OF BEDDING PLANTS—Ready June 1. (See Page 38).

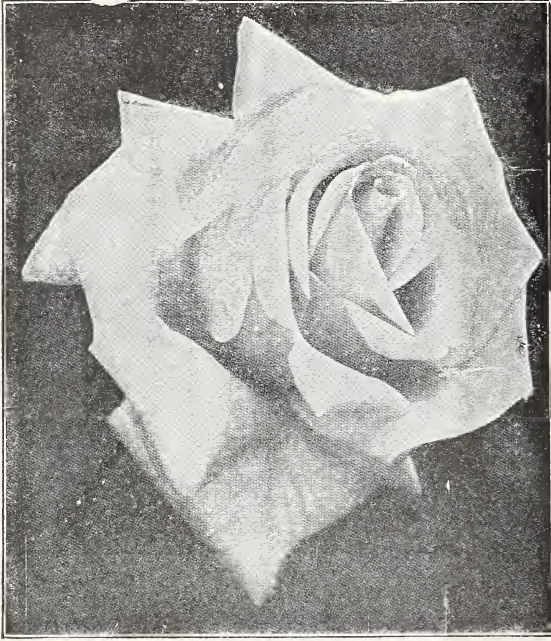
FALL BULBS—For winter and spring flowering. Send for catalog, ready in September.

SPECIAL NOTICE

All orders to special by mail must have postage added to catalog price of plants. 10 cents for each \$1.00 or less.

BANCROFT'S

Beautiful Flowers for 1923



OUR ROSES

Premier
Russell
Columbia
American
Legion
Crusader
Are the
Finest That
Grow

Improve your grounds.

See the beautiful effect by planting a few shrubs and flowers. We will be very glad to aid you in your selection. Send a plot of your grounds.

Spirea Van Houti →



JOSEPH BANCROFT & SON
Lock Box 35 Cedar Falls, Iowa Telephone 44
