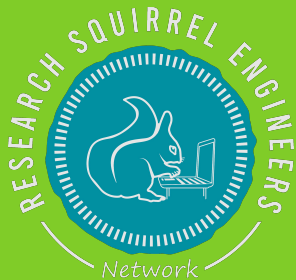


PADDY O'SHEEP AND SPARKLING UNICORNS – LINKED OPEN USABLE GEODATA IN ACTION

FLORIAN THIERY & FIONA SCHENK



IGSM - 36TH INTERNATIONAL GEODETIC STUDENT MEETING
UACEG SOFIA | 12. - 18. MAY 2024

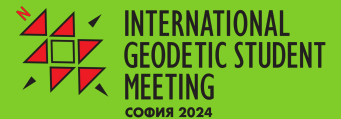


Image via <https://doi.org/10.3390/quat7020021>, CC BY 4.0

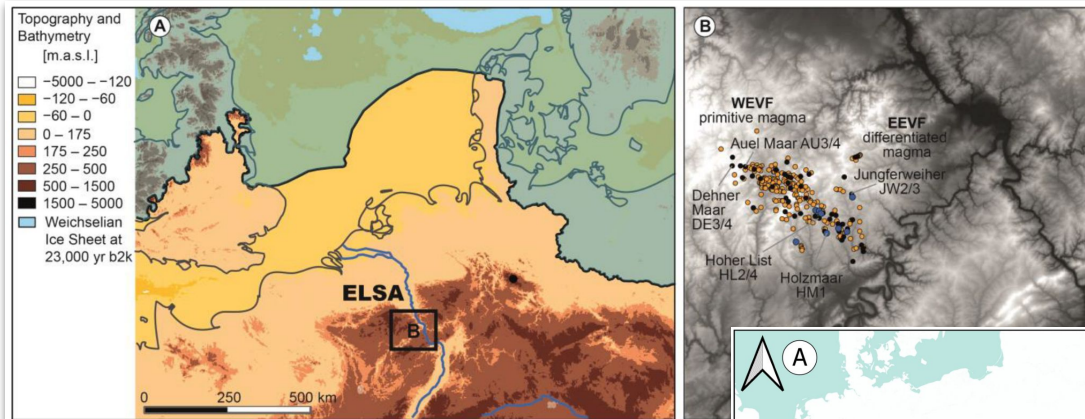
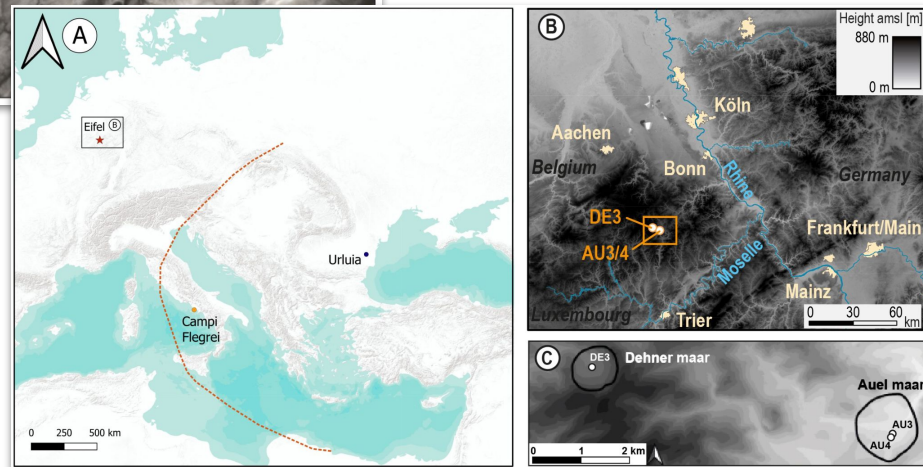
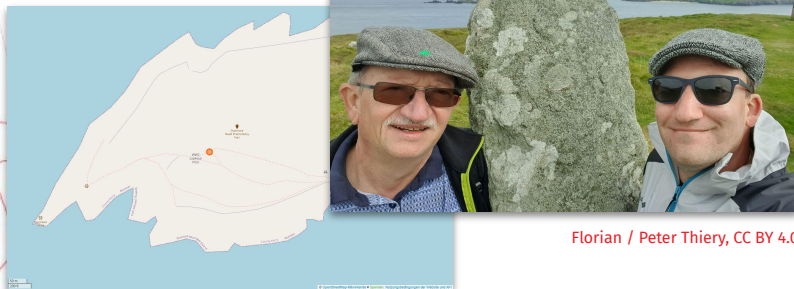


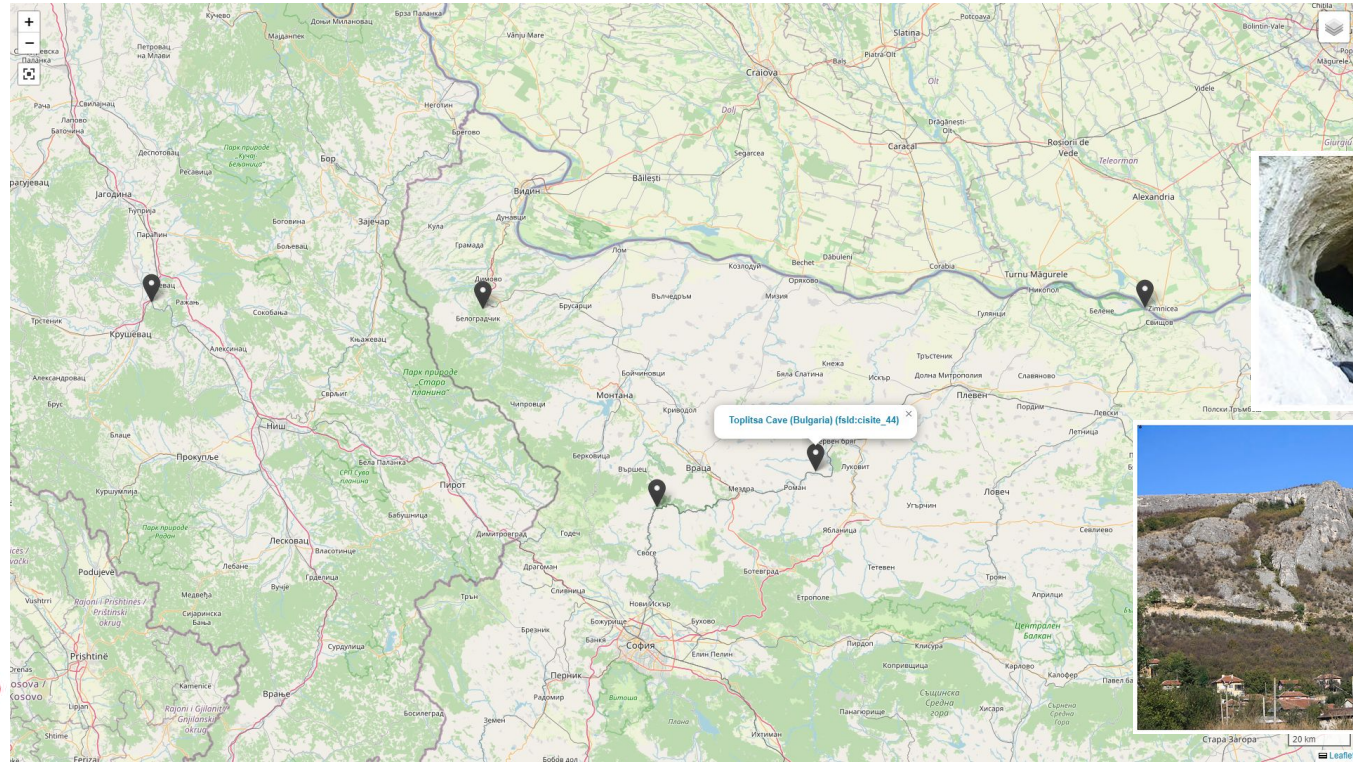
Image via <https://doi.org/10.3390/quat7020017>, CC BY 4.0



ODbL OSM contributors



GEODATA PLAYS A MASSIVE ROLE IN INTERDISCIPLINARY RESEARCH.



ESPECIALLY IN THE CULTURAL HERITAGE (ARCHAEOLOGICAL)
AND GEOSCIENCES DOMAINS, SUCH AS FINDSPOTS.



PADDY ON TOUR
/W FLO & PETER





PADDY IN IRELAND @ COUMEENOOLE NORTH / DUNMORE HEAD



FLO & PETER ON OGHAM TOUR



FLO & PETER ON OGHAM TOUR



OPEN SCIENCE, FAIR AND (SPATIAL) LOD



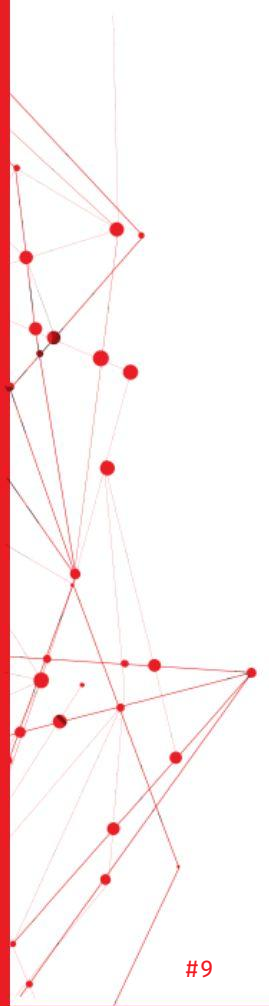
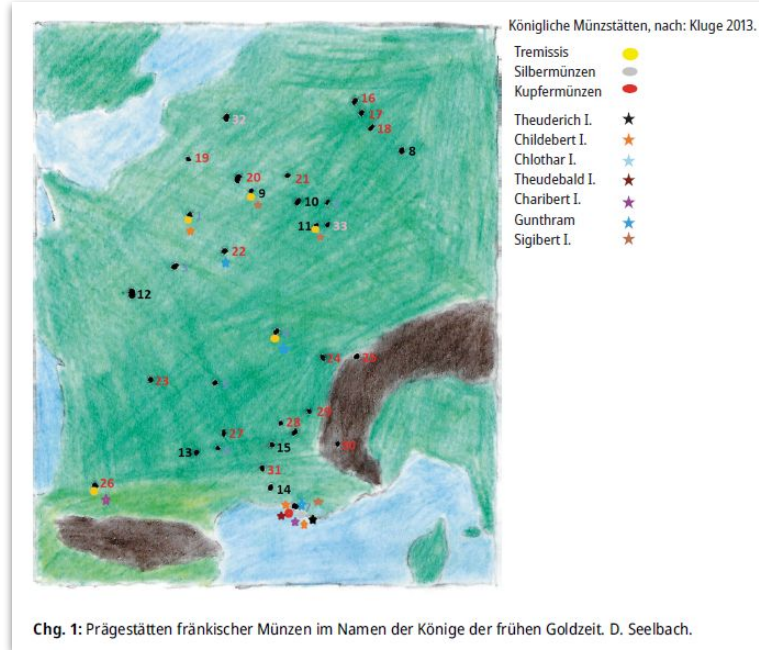
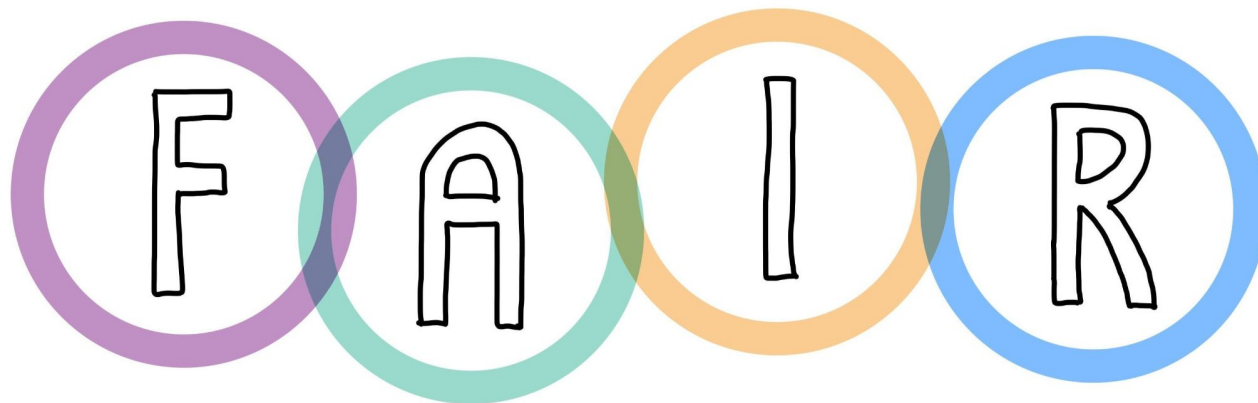


Image via <https://doi.org/10.1515/9783111341682> pp. 377 ff.



... SOMETIMES DONE LIKE THIS ...



FINDABLE



ACCESSIBLE



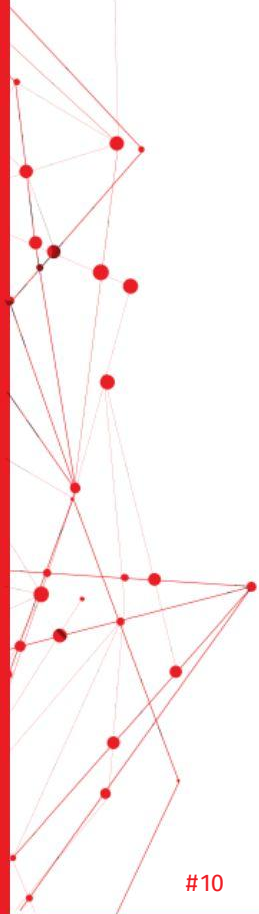
INTEROPERABLE

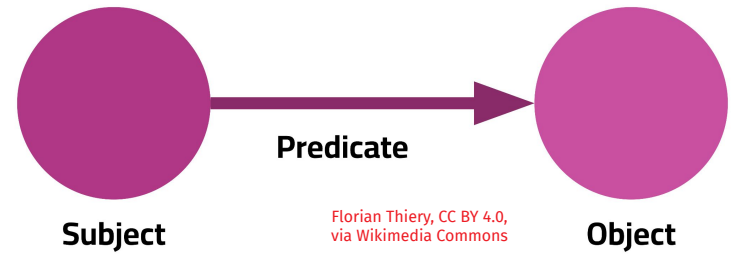
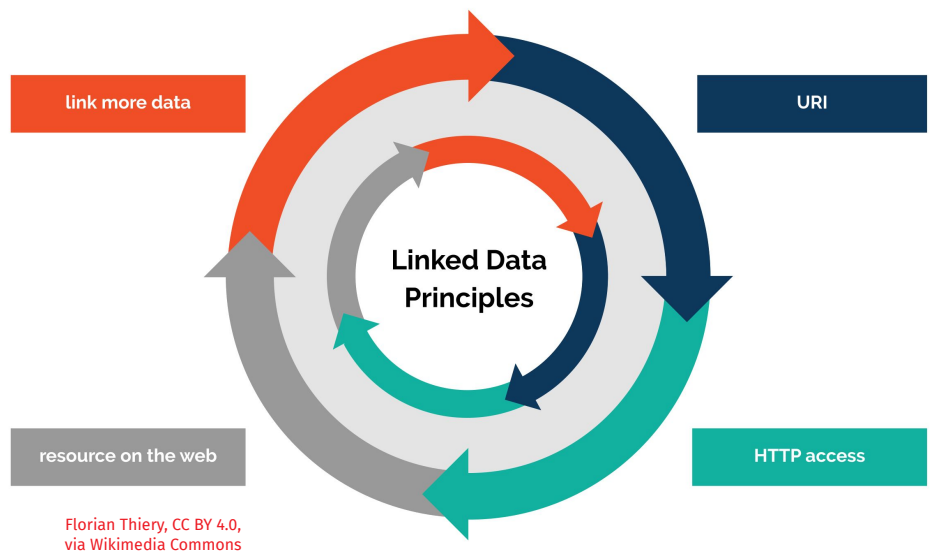


REUSABLE

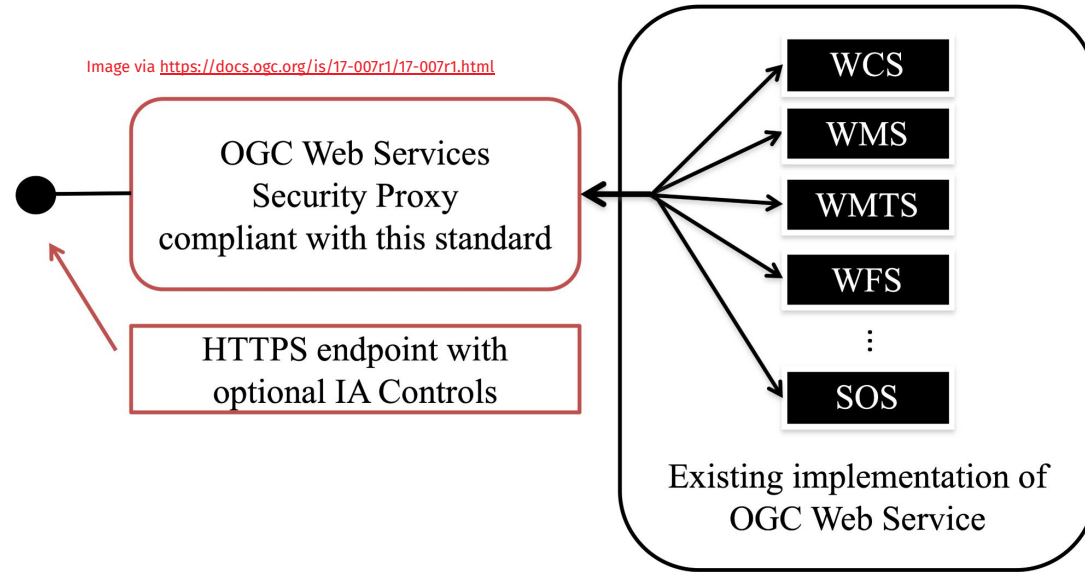


IN OPEN SCIENCE, THE PROCESS OF FAIRIFICATION TO MAKE (GEO)DATA FINDABLE, ACCESSIBLE, INTEROPERABLE AND RE-USABLE ...





... IS OFTEN CONNECTED TO SEMANTIC WEB TECHNIQUES SUCH AS THE RESOURCE DESCRIPTION FRAMEWORK (RDF) AND LINKED OPEN DATA (LOD).

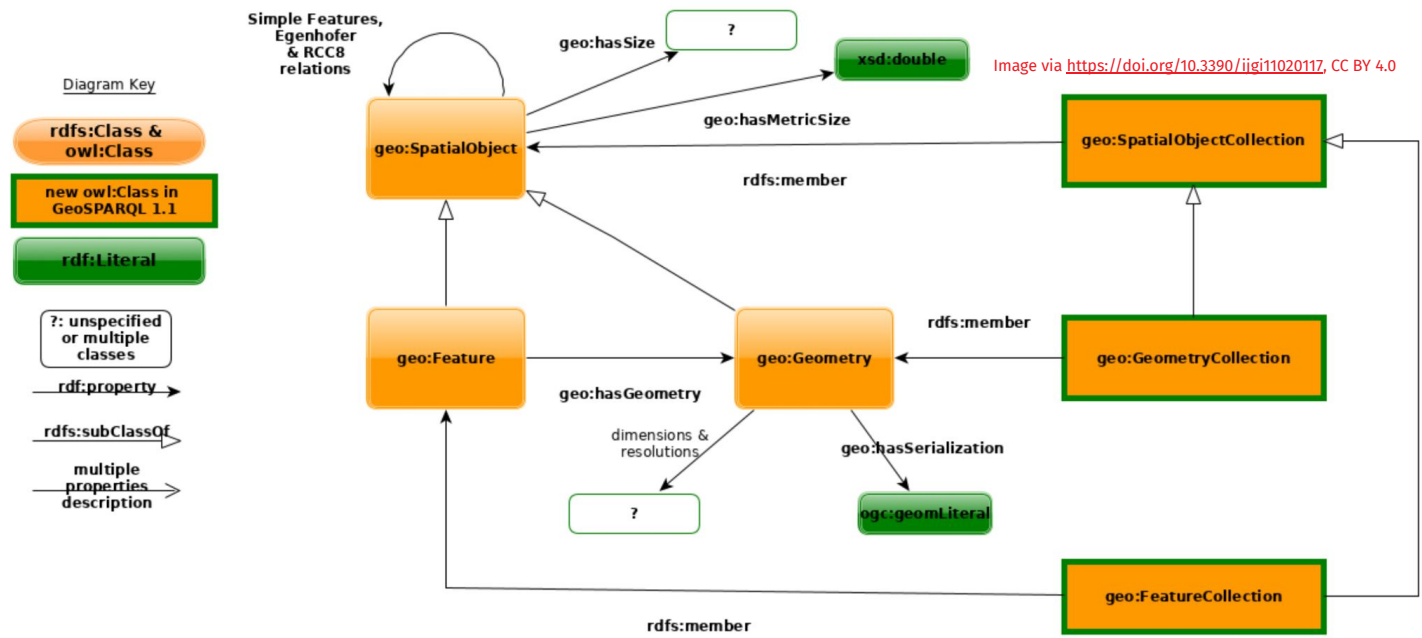
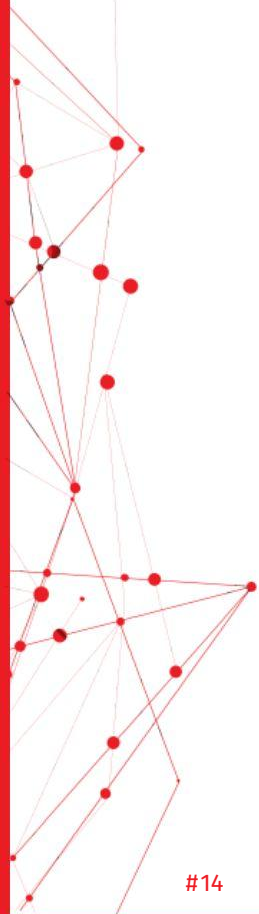


GEODATA CAN BE MADE FAIR USING
OGC WEB SERVICES SUCH AS WMS OR WFS.



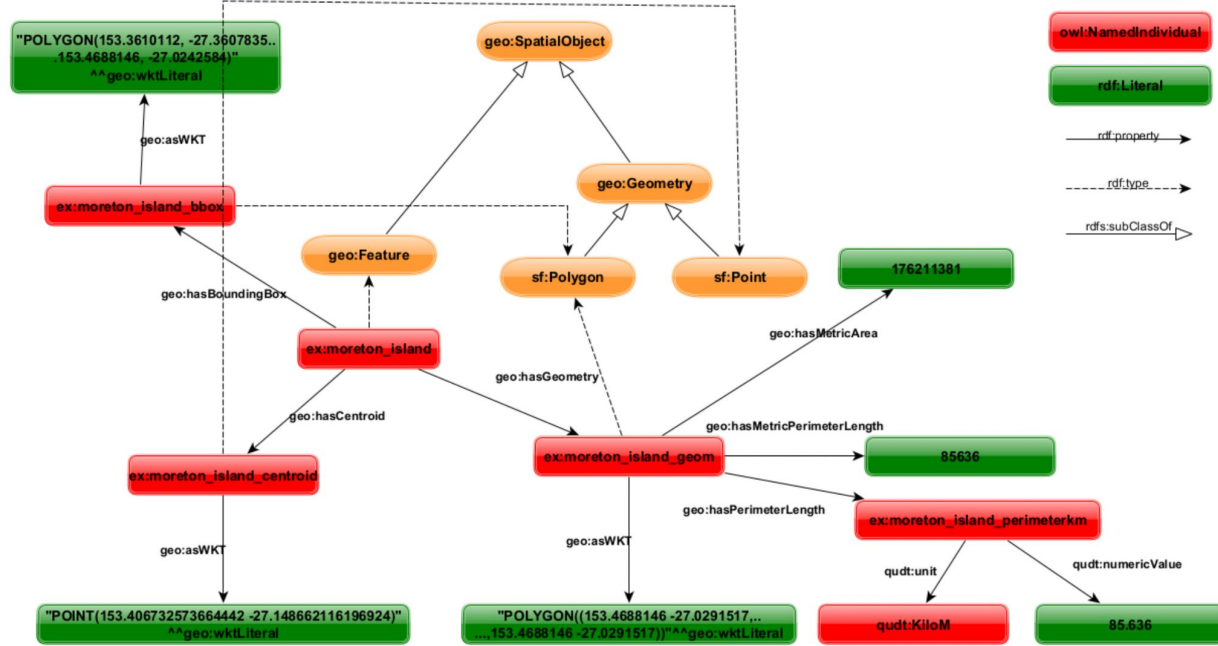
WIKIDATA

CITIZEN SCIENCE HUBS LIKE OSM AND WIKIDATA OFFER GEODATA!

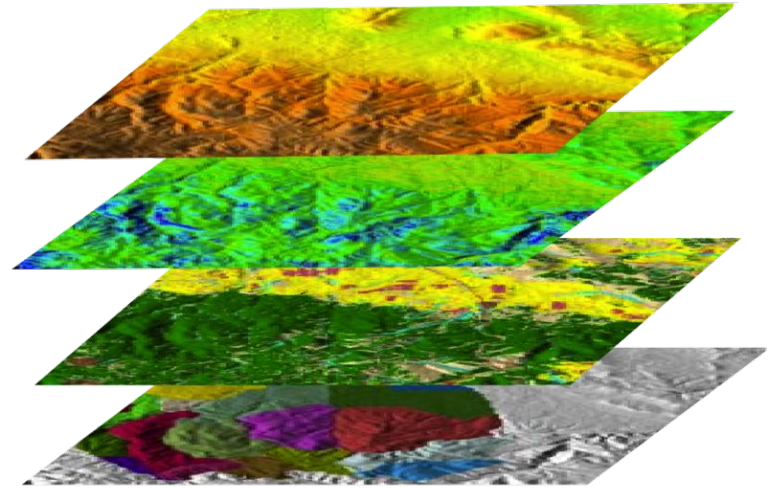
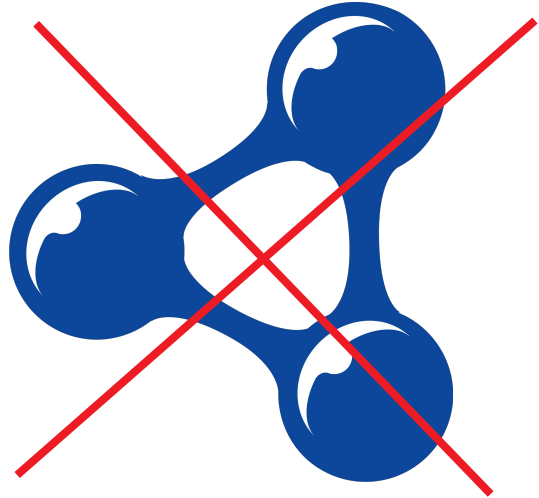
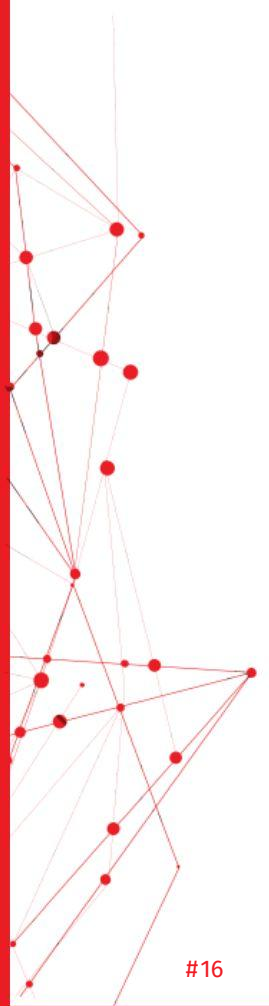


THE OGC OFFERS A GEOSPATIAL STANDARD CALLED GEOSPARQL.

Image via <https://doi.org/10.3390/ijgi11020117>, CC BY 4.0



GEOSPARQL IS BASED ON THE SIMPLE FEATURES IDEA AND IMPLEMENTS RDF/LOD IN THE GEOSPATIAL WORLD.



Engelbert Niehaus, CC BY-SA 3.0, via Wikimedia Commons

LOD IS NOT VERY COMMON IN THE GIS WORLD.

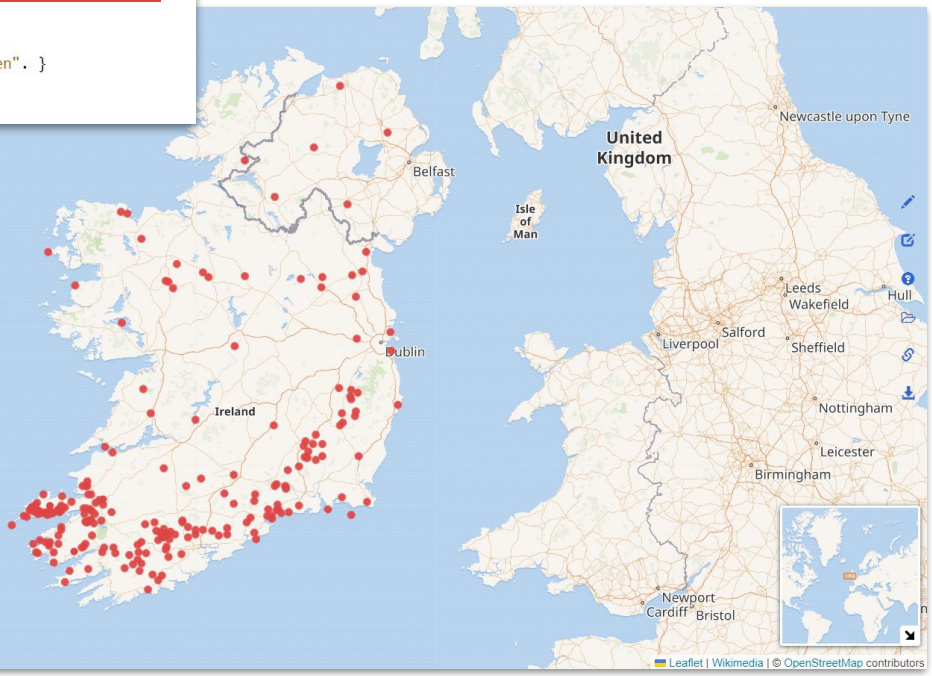
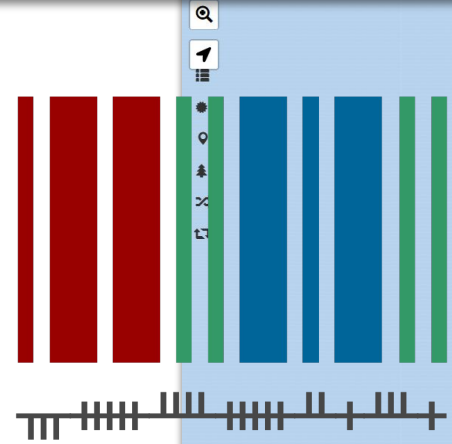


Wikidata Query Service

Beispiele Hilfe Weitere Werkzeuge Abfragegenerator

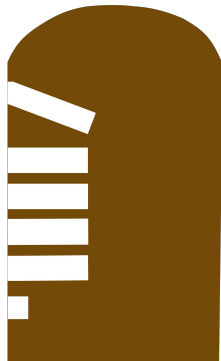
```
1 #defaultView:Map
2 # Ogham Sites
3 SELECT ?item ?itemLabel ?geo WHERE {
4   ?item wdt:P361 wd:Q100530634;
5     wdt:P31 wd:Q72617071;
6     wdt:P625 ?geo.
7   SERVICE wikibase:label { bd:serviceParam wikibase:language "[AUTO_LANGUAGE],en". }
8 }
```

<https://w.wiki/6HMD>



ACCESS VIA WIKIDATA THE SPARQL ENDPOINT





<https://overpass-turbo.eu/s/1lwq>

```
<node id="5145413640" lat="52.1102476" lon="-10.4731913">
  <tag k="historic" v="ogham_stone"/>
  <tag k="inscription" v="ERC MAQI MAQI-ERICIAS MU DOVINIA"/>
  <tag k="moved" v="no"/>
  <tag k="name" v="CIIC 178"/>
  <tag k="project" v="ogham.link"/>
  <tag k="ref:IE:smr" v="KE052-059002-"/>
  <tag k="source" v="survey"/>
  <tag k="wikidata" v="Q70892682"/>
  <tag k="wikimedia_commons" v="File:Coumeenoolle_Ogham_Stone_(Dunmore_Head).jpg"/>
</node>
```

The screenshot shows the Overpass Turbo interface. The top navigation bar includes buttons for 'Ausführen', 'Teilen', 'Export', 'Wizard', 'Speichern', 'Laden', 'Einstellungen', and 'Hilfe'. The main area is split into a code editor on the left and a map on the right. The code editor contains the following query:

```
1 /*
2 This is an example Overpass query.
3 Try it out by pressing the Run button above!
4 You can find more examples with the load tool.
5 */
6 node
7 [historic=ogham_stone]
8 {{{(show)}}};
9 out;
```

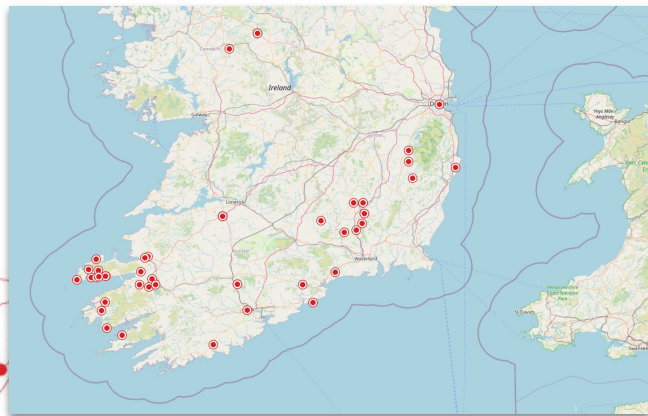
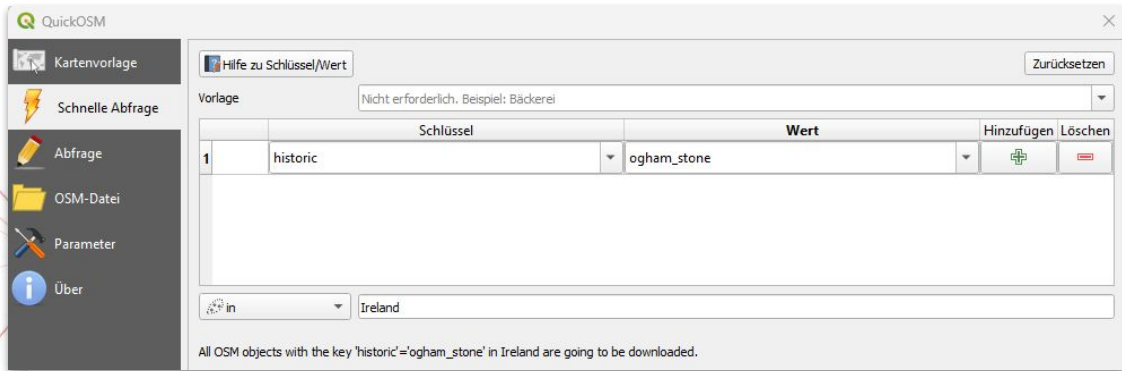
The map on the right shows a location in Ireland. A pop-up window titled 'Node 5145413640' is open, displaying the following information:

Tags

- historic = ogham_stone
- inscription = ERC MAQI MAQI-ERICIAS MU DOVINIA
- moved = no
- name = CIIC 178
- project = ogham.link
- ref:IE:smr = KE052-059002-
- source = survey
- wikidata = Q70892682
- wikimedia_commons = File:Coumeenoolle_Ogham_Stone_(Dunmore_Head).jpg
- ref

Coordinates:
52.1102476 / -10.4731913 (info)

OVERPASS-TURBO EXAMPLE



historic_ogham_stone_Ireland — Objekte gesamt:54, gefiltert: 54, gneishits: 0

full_id	osm_id	osm_type	historic	loc_name	moved_to	imagelicense	sourceurl	depth	layer
1	a45229802	node	ogham_stone	NELLE	NELLE	NELLE	NELLE	NELLE	NELLE
2	a473149586	node	ogham_stone	NELLE	NELLE	NELLE	NELLE	NELLE	NELLE
3	a127923177	node	ogham_stone	NELLE	NELLE	NELLE	NELLE	NELLE	NELLE
4	a2428911148	node	ogham_stone	NELLE	NELLE	NELLE	NELLE	NELLE	NELLE
5	a3219050271	node	ogham_stone	NELLE	NELLE	NELLE	NELLE	NELLE	NELLE
6	a320290865	node	ogham_stone	NELLE	NELLE	NELLE	NELLE	NELLE	NELLE
7	a3621783646	node	ogham_stone	NELLE	NELLE	NELLE	NELLE	NELLE	NELLE
8	a3683314804	node	ogham_stone	NELLE	NELLE	NELLE	NELLE	NELLE	NELLE
9	a435295154	node	ogham_stone	NELLE	NELLE	NELLE	NELLE	NELLE	NELLE
10	a4939991496	node	ogham_stone	NELLE	NELLE	NELLE	NELLE	NELLE	NELLE
11	a5111098877	node	ogham_stone	NELLE	NELLE	NELLE	NELLE	NELLE	NELLE
12	a5111098878	node	ogham_stone	NELLE	NELLE	NELLE	NELLE	NELLE	NELLE
13	a5145413640	node	ogham_stone	NELLE	NELLE	NELLE	NELLE	NELLE	NELLE
14	a5530748142	node	ogham_stone	NELLE	NELLE	NELLE	NELLE	NELLE	NELLE

QuickOSM

Download OSM data thanks to the Overpass API. You can also open local OSM or PBF files. A special parser, on top of OGR, is used to let you see all OSM keys available.

Execute custom Overpass queries in QGIS to get OSM data.

★★★★★ 250 Bewertung(en), 1181224x heruntergeladen

Tags [osm](#), [opentreetmap](#), [overpass](#), [download](#), [osmdownload](#), [josm](#), [remote](#), [pbf](#), [processing](#), [modeller](#)

Weitere Informationen [Homepage](#) [Fehlerverfolgung](#) [Coderepositorium](#)

Autor Etienne Trimaille

Installierte Version 2.1.1

Verfügbare Version (stabil) 2.1.1 Aktualisiert um So Aug 21 04:09:28 2022

Änderungsprotokoll

Version 2.1.1:

- * Add a warning if the key has a trailing white space (contribution from @kannes)
- * Improve the UI by moving buttons up and adding icons to them
- * Fix some Python exceptions which weren't displayed to the user
- * Switch to POST HTTP request instead of GET for QGIS ≥ 3.22
- * Fix an issue when installing QuickOSM plugin

Version 2.1.0:

- * Check that QGIS Processing algorithm is available before opening the QuickOSM dialog
- * Improve help how to create map preset on the online help
- * Improve the help about add some QML in queries
- * Fix Python exception if the user input is not recognised as a valid preset
- * Update default JOSM/Vespucci presets from 2.9.0 to 4.8.0

Version 2.0.1:

- * Fix trunk roads to Urban visualization preset (contribution from @Rikuoja)
- * Fix an error when running Python 3.10



ACCESS VIA QGIS PLUGINS: QUICKOSM



QGIS

THE SPARQLING UNICORN QGIS PLUGIN HAS BEEN IMPLEMENTED TO BRING LINKED OPEN USABLE GEODATA TO ACT USING OPEN-SOURCE SOFTWARE.



Zu dieser Erweiterung gibt es eine experimentelle Version

SPARQLing Unicorn QGIS Plugin

This plugin adds a GeoJSON layer from SPARQL endpoint queries. The necessary python libs are bundled with the plugin.

Adds a layer from Wikidata and other Linked Data SPARQL endpoints. Just insert a SPARQL query for Geo-Items and get a new vector layer into QGIS.

★★★★★ 10 Bewertung(en), 2809x heruntergeladen

Kategorie Vector

Tags wikidata, sparql, nomisma, kerameikos, ordnance survey, openstreetmap, linkedgeodata, geonames, abpedia, covid19, atlantigis, sophox, roman open data, pleiades

Weitere Informationen Homepage Fehlerverfolgung Coderepositorium

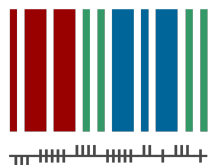
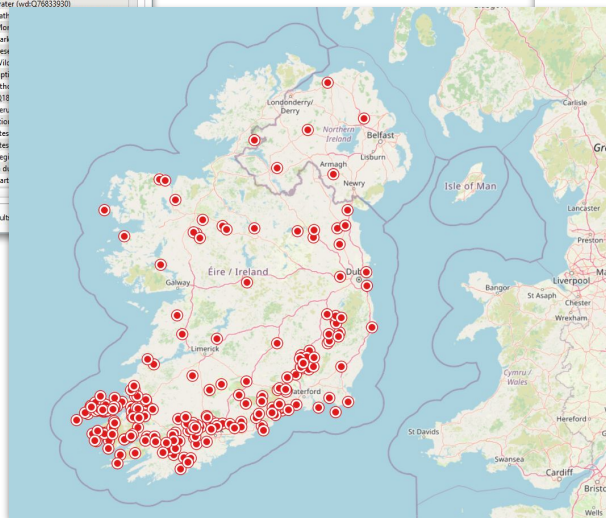
Autor Timo Homburg, Florian Thiery, SPARQL Unicorn, Research Squirrel Engineers

Installierte Version 0.15

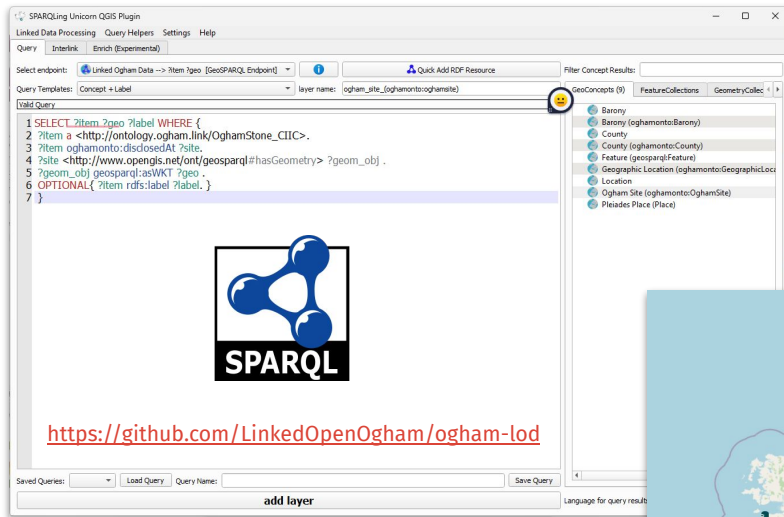
Verfügbare Version (experimentell) 0.15 Aktualisiert um Di Nov 8 08:25:21 2022

Änderungsprotokoll

- 0.15: HTML documentation generation, BBOX Dialog and Enrichment Dialog improved, usage of more QGIS UI elements, related concept view, query layer data in bbox, improvements to triple store detection
- 0.14.1: Improved Compatibility for SPARQL 1.0 Endpoints, Automated Configuration Updates, Fixes for GeoShapes
- 0.14: New icon set, UI design using layouts, improved item views, reworked triple store configuration, support for wgs84:geometry, graph validation with pyshacl, convert layer to neogeo RDF, began multilanguage literal support, mark linked geo concepts
- 0.13.1: fixed icons and RDF export
- 0.13: Added classree for navigation, support for SPARQL endpoints with HTTP Auth, support for GeoSPARQL 1.1
- 0.12.12: Support for Wikidata Geoshapes, fallback for non-standard conform literal definitions
- 0.12.11 Fix for latlon based triple stores, polygon BBOX
- 0.12 Plugin is now based on QgisTasks, BBOX dialog improved, quick add new triple stores, SPARQL interface improvements, improved list view of geo-classes, ability to add converted RDF sets to triple stores



ACCESS VIA QGIS PLUGINS: SPARQLING UNICORN



Zu dieser Erweiterung gibt es eine experimentelle Version

SPARQLing Unicorn QGIS Plugin

This plugin adds a GeoJSON layer from SPARQL endpoint queries. The necessary python libs are bundled with the plugin.

Adds a layer from Wikidata and other Linked Data SPARQL endpoints. Just insert a SPARQL query for Geo-Items and get a new vector layer into QGIS.

★★★★★ 10 Bewertung(en), 2809x heruntergeladen

Kategorie Vector

Tags wikidata, sparql, nomisma, keramekos, ordnance survey, openstreetmap, linkedgeodata, geonames, dbpedia, covid19, atlantigis, sophox, roman open data, pleiades

Weitere Informationen Homepage Fehlerverfolgung Coderepositorium

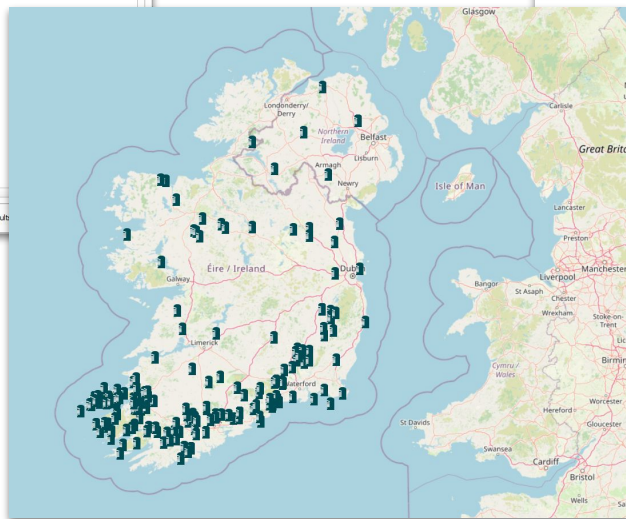
Autor Timo Homburg, Florian Thiery, SPARQL Unicorn, Research Squirrel Engineers

Installierte Version 0.15

Verfügbare Version (experimentell) 0.15 Aktualisiert um Di Nov 8 08:25:21 2022

Änderungsprotokoll

- 0.15: HTML documentation generation, BBOX Dialog and Enrichment Dialog improved, usage of more QGIS UI elements, related concept view, query layer data in bbox, improvements to triple store detection
- 0.14.1: Improved Compatibility for SPARQL 1.0 Endpoints, Automated Configuration Updates, Fixes for GeoShapes
- 0.14: New icon set, UI design using layouts, improved item views, reworked triple store configuration, support for wgs84:geometry, graph validation with pyshacl, convert layer to neogeo RDF, began multilanguage literal support, mark linked geo concepts
- 0.13.1: fixed icons and RDF export
- 0.13: Added classtree for navigation, support for SPARQL endpoints with HTTP Auth, support for GeoSPARQL 1.1 FeatureCollections, Added context menu for classtree, Added support for schema.org encoded geometries, smaller bugfixes
- 0.12.2: Support for Wikidata Geoshapes, fallback for non-standard conform literal definitions
- 0.12.1 Fix for latlon based triple stores, polygon BBOX
- 0.12 Plugin is now based on QgisTasks, BBOX dialog improved, quick add new triple stores, BBOX interface improvements, improved list view of geo-classes, ability to add converted RDF sets to triple stores



ACCESS VIA QGIS PLUGINS: SPARQLING UNICORN



<http://lod.ogham.link/data/Y10000088>

CIIC 178 (Ogham Stone Concept by RAS Macalister) EN

<http://lod.ogham.link/data/Y10000088>

The CIIC 178 (Ogham Stone Concept by RAS Macalister) resource is powered by Static GeoPubby generated using the SPARQLing Unicorn QGIS Plugin

Search: Go Download Options: Format: Turtle (TTL) Download

Description: comment:Ogham Stone, Ireland

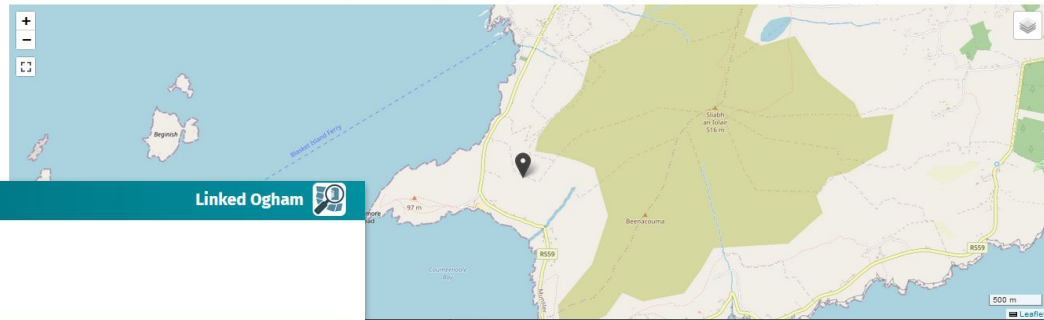
Property	Value
carries (oghamonto:carries)	O160000088 (fsId:O160000088)
disclosedAt (oghamonto:disclosedAt)	OS40000083 (fsId:OS40000083)
exactMatch (oghamonto:exactMatch)	Q70892682 (wde:Q70892682) [x]
hasCollection (oghamonto:hasCollection)	Y50000178 (fsId:Y50000178)
shows (oghamonto:shows)	<ul style="list-style-type: none"> OW13 (fsId:OW13) OW18 (fsId:OW18) OW52 (fsId:OW52) OW6 (fsId:OW6)
type (rdf:type)	<ul style="list-style-type: none"> OghamStone (oghamonto:OghamStone) [x] OghamStone_C1IC (oghamonto:OghamStone_C1IC) [x] Resource (ldp:Resource) [x] Resource (Resource) [x]
comment (rdfs:comment)	Ogham Stone, Ireland (rdflangString) (iso6391:en)
label (rdfs:label)	CIIC 178 (Ogham Stone Concept by RAS Macalister) (rdflangString) (iso6391:en)

Coumeenole North / Dunmore Head (Ogham Site) EN

<http://lod.ogham.link/data/OS40000083>

The Coumeenole North / Dunmore Head (Ogham Site) resource is powered by Static GeoPubby generated using the SPARQLing Unicorn QGIS Plugin

Search: Go Download Options: Format: Turtle (TTL) Download



Value
Q8539557 (wde:Q8539557) [x]
Corkaguiny (xsd:string)
Ireland (xsd:string)
Kerry (xsd:string)
Munster (xsd:string)
Coumeenole North (xsd:string)
OS40000083_geom (fsId:OS40000083_geom)
OS40000083_geom (fsId:OS40000083_geom)
<ul style="list-style-type: none"> OghamSite (oghamonto:OghamSite) [x] Place (Place) [x]
Coumeenole North / Dunmore Head (Ogham Site) (rdflangString) (iso6391:en)
<ul style="list-style-type: none"> OghamSite Instances Collection (fsId:OghamSite_collection) Place Instances Collection (fsId:Place_collection)

<http://lod.ogham.link/data/OS40000083>

LINKED OGHAM!

SPARQLING UNICORN QGIS PLUGIN





THE SPARQLING UNICORN QGIS PLUGIN - A LINKED DATA ACCESS POINT FOR QGIS





**The SPARQL Unicorn
allows linked data
queries in (Geo)SPARQL
to be sent to triple
stores and prepares the
results for the
geocommunity in QGIS.**

THE SPARQLING UNICORN QGIS PLUGIN



The plugin currently offers three main functions:

- (A) Simplified querying of Semantic Web data sources
- (B) Enrichment of geodata and
- (C) Transformation of QGIS vector layers to RDF

THE UNICORN'S FUNCTIONS

SPARQL UNICORN ONTOLOGY DOCUMENTATION TOOL



Marketplace / Actions / sparqlunicorn-ontdoc

sparqlunicorn-ontdoc
0.17 [Latest version](#)

SPARQL Unicorn Ontology Documentation

100 [10 530 Downloads](#) [1140763](#)

This repository hosts a standalone version of the HTML documentation feature included in the SPARQLing Unicorn QGIS Plugin.

Rather than initiating the documentation generation within the SPARQLing Unicorn QGIS Plugin, this python script allows the generation of the documentation standalone or as a Github Action.

The standalone script does not rely on QGIS classes and does not provide the full functionality available in the SPARQLing Unicorn QGIS Plugin.

Deviations from the SPARQLing Unicorn Plugin are listed as follows:

- Support for less geometry literals: Only WKT and GeoJSON literals are supported for rendering

Usage Example as Github Action

For a usage example please refer to this repository:
https://github.com/sparqlunicorn/sparqlunicornGoesGIS_testdata

Usage Example as Gitlab CI Workflow

For a usage example please refer to this repository:
https://gitlab.com/sparqlunicorn/sparqlunicornGoesGIS_testdata

Installation as PIP package

You can install the ontology documentation script as a pip package using the following command:

```
pip install -i git+https://github.com/sparqlunicorn/sparqlunicornGoesGIS-ontdoc@#17dev
```

The screenshot shows the QGIS interface. On the left, a layer named 'QgisOncoreMap' is visible. The main map area displays a world map with a dense cluster of brown circular markers in Europe. On the right, the 'SPARQLing Unicorn QGIS Plugin' window is open, showing a SQL query:

```
1 SELECT ?item ?item_label ?type WHERE {
2   ?item wdt:P31 wd:Q20769 .
3   ?item wdt:P25 ?type .
4   SERVICE wikibase:label {
5     sd:serviceParam wikibase:language "[AUTO_LANGUAGE],en".
6   }
7 } LIMIT 10
```

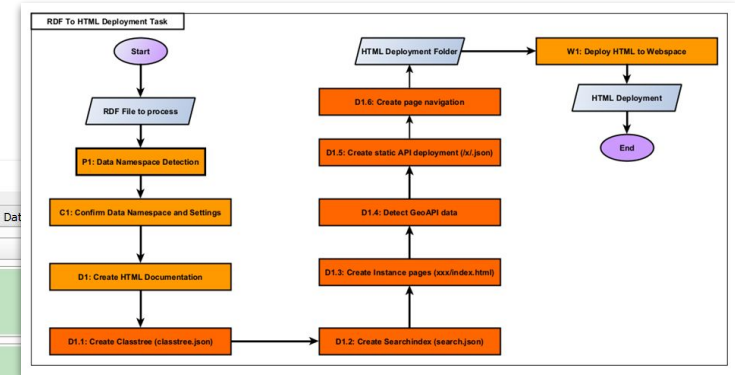
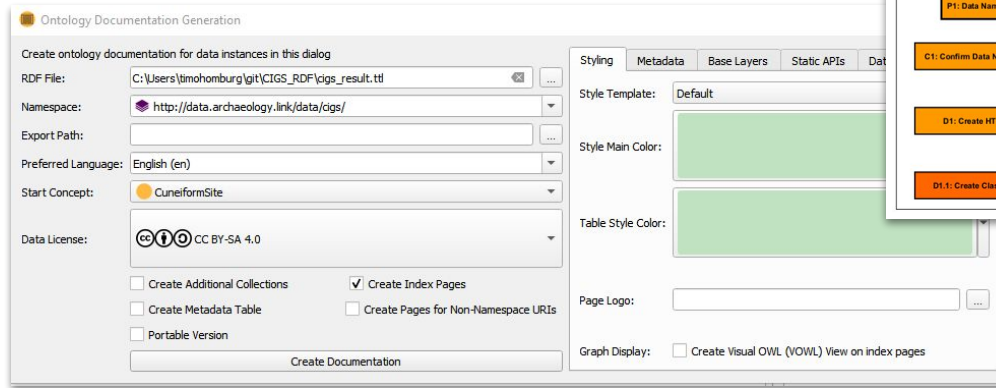
The 'Concepts' panel on the right lists various ontology classes, with 'wikibase:Service' selected.

- An extension of the SPARQLing Unicorn QGIS Plugin
- Idea: Convert an RDF Dump to an enriched HTML Deployment
- The result should be ready to host on platforms such as Github and Gitlab Pages
- The Documentation Process should be usable as Continuous Integration components
- The Deployment should be in such a way that it is useful for a maximum of research communities

DOCUMENTATION TOOL



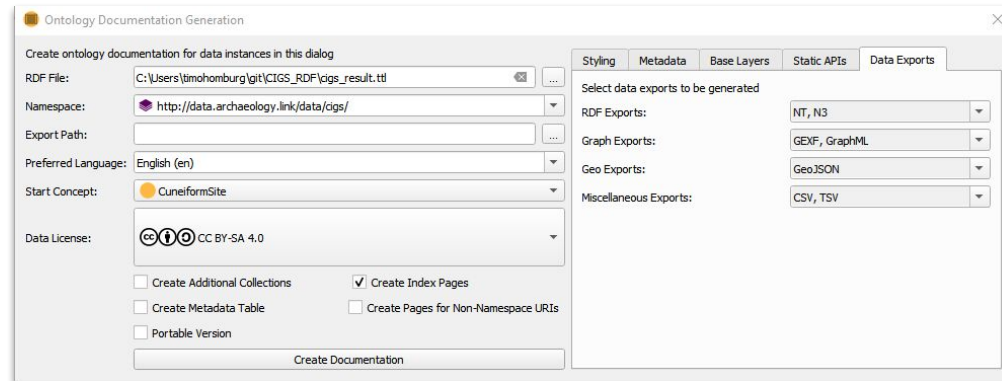
1. Load an RDF Data Dump File
2. Select one or more data namespaces which should be documented as HTML
3. Select a target folder and customise your export
4. Start HTML Generation to a local folder
5. Optional Deployment to a web space



DOCUMENTATION TOOL: HOW TO USE IT



- Different research communities are used to data being provided differently
- The SPARQL Unicorn Ontology Documentation Tool create data exports
 - Different RDF serializations (.TTL, .JSON-LD, .N3)
 - Graph Analysis Data (.graphml, .gexf among others)
 - GeoExports (GeoJSON, KML, GML)
 - Relational Data Exports (.CSV, .TSV, .JSON)



DOCUMENTATION TOOL: DATA EXPORTS



CAMPANIAN IGNIMBRITE EXAMPLES



SPARQLing Unicorn QGIS Plugin

Linked Data Processing Queryhelfer Einstellungen Hilfe

Abfragen Interlinken Anreicherung (Experimentell)

Endpoint auswählen: Campanian Ignimbrite [GeoSPARQL Endpoint] Quick Add RDF Resource Filter Concept Results:

Queryvorlagen: 10 Random Geometries Layer Name: CI Findspots

Valid Query

```
1 SELECT ?item ?geo WHERE {
2 ?item <http://www.w3.org/1999/02/22-rdf-syntax-ns#type> <http://fuzzy-sl.squirrel.link/ontology/Site> .
3 ?item <http://www.opengis.net/ont/geosparql#hasGeometry> ?item_geom .
4 ?item_geom <http://www.opengis.net/ont/geosparql#asWKT> ?geo .
5 }
```

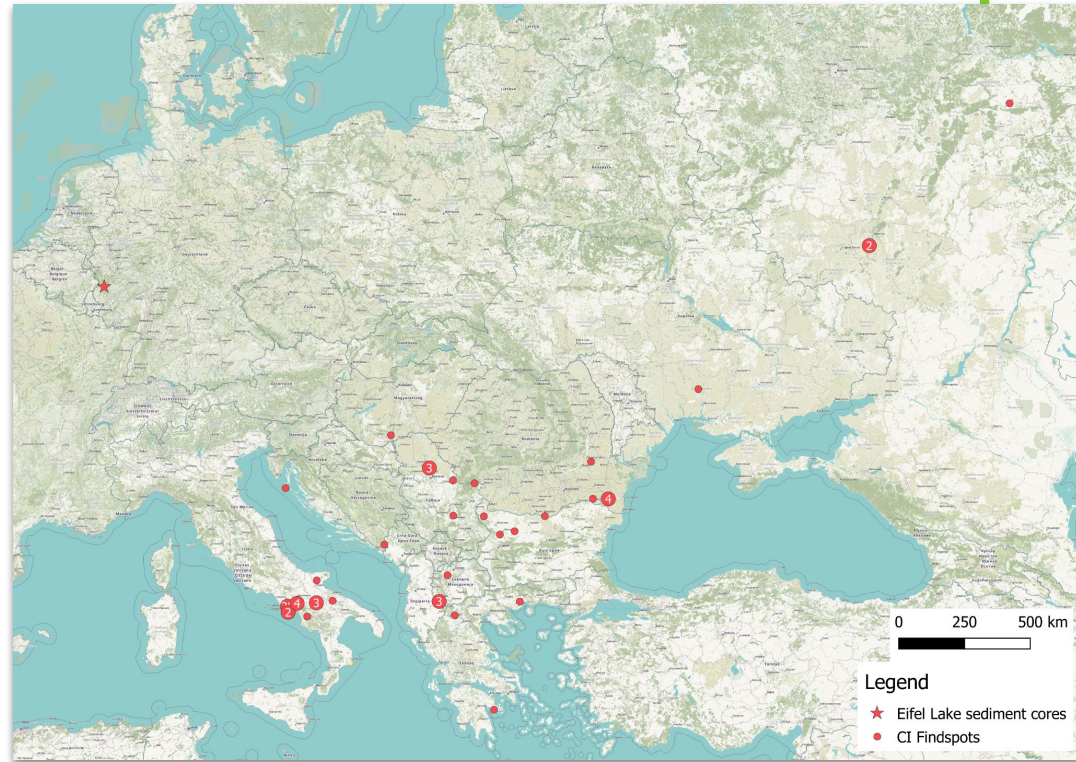
Gespeicherte Queries: Query laden Queryname: Query speichern

Layer hinzufügen Language for query results: English (en)

GeoConcepts (4) FeatureCollections Geon

- Place
- ns1:Site
- prov:Entity
- sf:Point

CAMPANIAN IGNIMBRITE FINDSPOTS



CAMPANIAN IGNIMBRITE FINDSPOTS

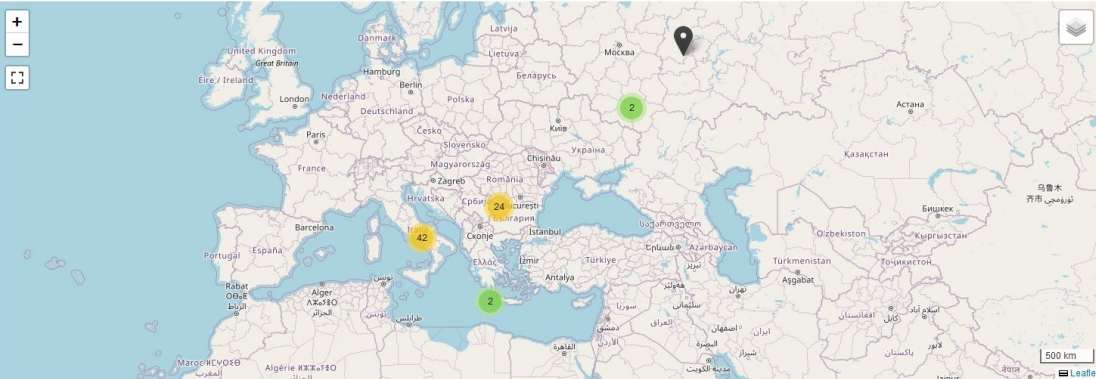
Squirrel Data | CI FSL | powered by the Research Squirrel Engineers Network Nuts?

Site Instances Collection EN

http://fuzzy-sl.squirrel.link/data/Site_collection

The Site Instances Collection resource is powered by Static [GeoPubby](#) generated using the [SPARQLing Unicorn QGIS Plugin](#)

Search: Download Options: Format: Turtle (TTL)



Property	Value
type (rdf:type)	FeatureCollection (gsp:FeatureCollection) [x]
label (rdfs:label)	Site Instances Collection (rdf:langString) (iso639:en)
member (rdfs:member)	<ul style="list-style-type: none">71 valuesAcerra Sink (fsld:csite_1)Acqua Fidia (fsld:csite_2)Balta Alba (Romania) (fsld:csite_57)Batavina (fsld:csite_34)Bratul Borcea (Romania) (fsld:csite_56)Capezzano (fsld:csite_3)Casola (fsld:csite_4)Castelchivita Cave (fsld:csite_5)Copcechia (fsld:csite_6)

CAMPANIAN IGNIMBRITE FINDSPOTS

SPARQLing Unicorn QGIS Plugin

Linked Data Processing Queryhelper Einstellungen Hilfe

Abfragen Interlinken Anreicherung (Experimentell)

Endpoint auswählen: Campanian Ignimbrite [GeoSPARQL Endpoint] Quick Add RDF Resource Filter Concept Results:

Queryvorlagen: 10 Random Geometries Layer Name: CI Findspot Spatial-Type Cave

Valid Query

```
1 SELECT ?item ?geo ?itemLabel WHERE {
2 ?item <http://www.w3.org/1999/02/22-rdf-syntax-ns#type> <http://fuzzy-sl.squirrel.link/ontology/Site> .
3 ?item <http://www.opengis.net/ont/geosparql#hasGeometry> ?item_geom .
4 ?item_geom <http://www.opengis.net/ont/geosparql#asWKT> ?geo .
5 ?item rdfs:label ?itemLabel.
6 ?item <http://fuzzy-sl.squirrel.link/ontology/spatialType> <http://fuzzy-sl.squirrel.link/ontology/Cave>.
7 }
```

Gespeicherte Queries: Query laden Queryname: Query speichern

Layer hinzufügen Language for query results: English (en)

GeoConcepts (4) FeatureCollections Geon

- Place
- ns1:Site
- prov:Entity
- sf:Point

FINDSPOTS WITH SPATIAL-TYPE: CAVE



FINDSPOTS WITH SPATIAL-TYPE: CAVE



via <https://doi.org/10.1016/j.igres.2011.02.005> © Mike W. Morley and Jamie C. Woodward

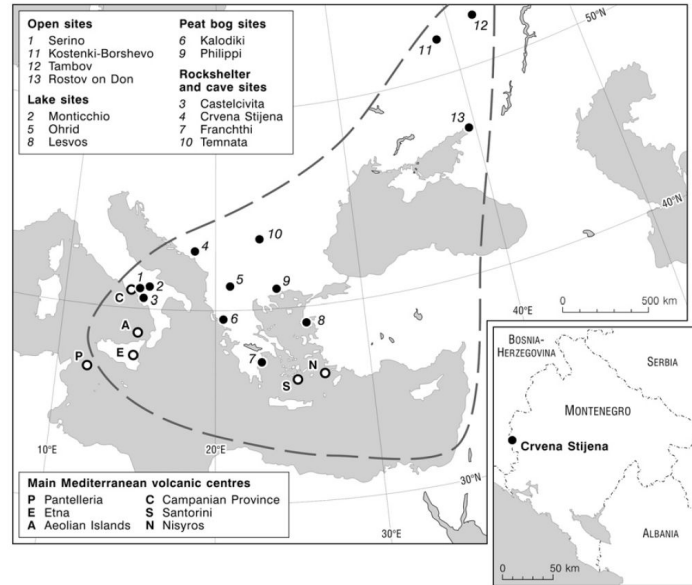
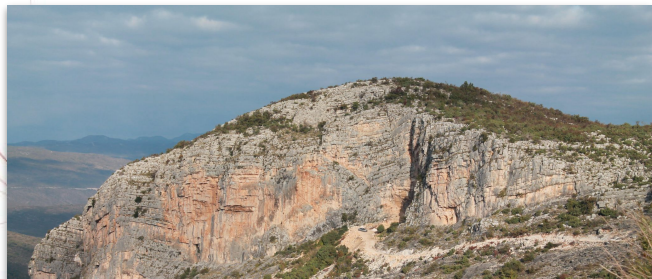


Figure 1. Map of the central and eastern Mediterranean and southeast Europe showing the major volcanic centres and key sites mentioned in the text that have been correlated with the Campanian Ignimbrite eruption. The dashed line shows the extent of the distal tephra (after Pyle et al., 2006). The inset map shows the location of Crvena Stijena rockshelter in western Montenegro.

CRVENA STILJENA CAVE (MONTENEGRO) = ID:51

via trentu.ca



Roland Soré, via flickr [rolibin/30105173063/](https://www.flickr.com/photos/rolibin/30105173063/)

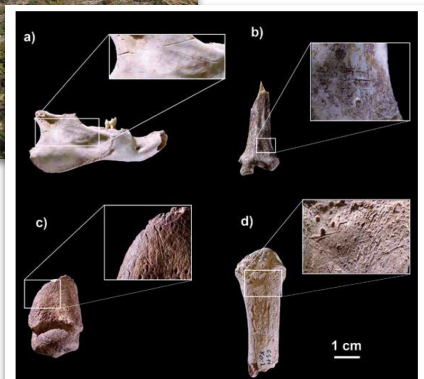


Fig. 14.9. Examples of cutmarks observed on specimens taxa other than ungulates at Crvena Stijena: a) mammoth mandible (MS); b) hare distal tibia (M1); c) *Ursus* sp. metapodial fragment (XXIV); d) *Ursus* sp. fifth metacarpal fragment (M1).

via [researchgate 320957331](https://www.researchgate.net/publication/320957331) The Paleolithic Faunal Remains from Crvena Stijena

<http://www.openstreetmap.org/node/10879170567>



Open Street Map Contributors, ODbL

archaeological_site	megalith
historic	archaeological_site
historic:civilization	neolithic
name	Crvena stijena
name:en	Red wall
wikidata	Q121418883
wikipedia	https://bs.wikipedia.org/wiki/Crvena_stijena_(Crna_Gora)

CRVENA STIJENA CAVE AS ARCHAEOLOGICAL SITE IN THE LOD CLOUD

Squirrel Data | CI FSL | powered by the Research Squirrel Engineers Network Nuts?

Crvena Stiljena (Montenegro) EN

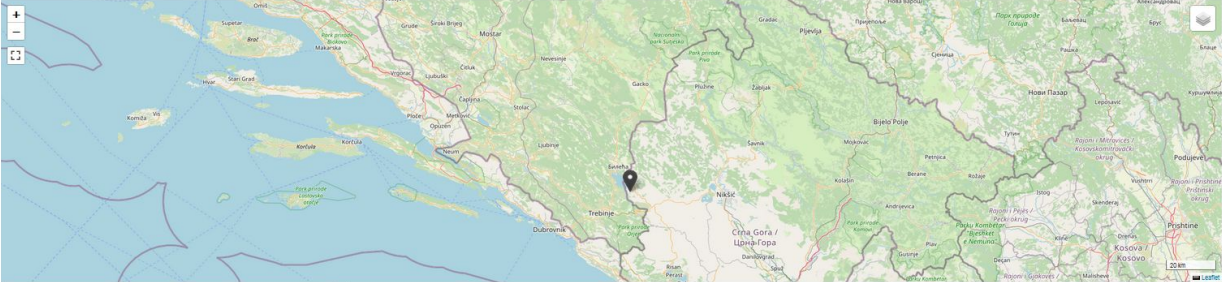
http://fuzzy-si.squirrel.link/data/cisite_51

The Crvena Stiljena (Montenegro) resource is powered by Static GeoPubly generated using the SPARQLing Unicorn OGIS Plugin

Search: Download Options: Format: Turtle (TTL) Download

Description: comment:CI findspot related from literature

Description: scopeNote:CI findspot related from literature



Property	value
certaintyDesc (fsl:certaintyDesc)	findspot mentioned in a scientific paper and found on OpenStreetMap (rdf:langstring) (iso639-en)
certaintyLevel (fsl:certaintyLevel)	high (fsl:high) [x]
hasReference (fsl:hasReference)	Morley & Woodward, 2011 (xsd:string)
partOf (fsl:partOf)	CampanianIgnimbriteProject (fsl:CampanianIgnimbriteProject) [x]
siteType (fsl:siteType)	archaeologicalSite (fsl:ArchaeologicalSite) [x]
spatialType (fsl:spatialType)	<ul style="list-style-type: none">ArchaeologicalSite (fsl:ArchaeologicalSite) [x]Cave (fsl:Cave) [x]
hasGeometry (gsp:hasGeometry)	cisite_51_geom (fsl:cisite_51_geom)
type (rdf:type)	<ul style="list-style-type: none">Entity (prov:Entity) [x]Place (skos:Place) [x]Site (fsl:Site) [x]
comment (rdfs:comment)	CI findspot related from literature (rdf:langstring) (iso639-en)
label (rdfs:label)	Crvena Stiljena (Montenegro) (rdf:langstring) (iso639-en)
closeMatch (skos:closeMatch)	<ul style="list-style-type: none">1409705051 (xsd:integer) [x]Q121618853 (wiki:Data.Q121618853) [x]
prefLabel (skos:prefLabel)	Crvena Stiljena (Montenegro) (rdf:langstring) (iso639-en)
scopeNote (skos:scopeNote)	CI findspot related from literature (rdf:langstring) (iso639-en)
is member of (rdfs:member) of	<ul style="list-style-type: none">Entity instances Collection (fsl:Entity_collection)Place instances Collection (fsl:Place_collection)Site instances Collection (fsl:Site_collection)
is used (prov:used) of	cisite_51_activity (fsl:cisite_51_activity)

CRVENA STILJENA CAVE IN THE LOD CLOUD

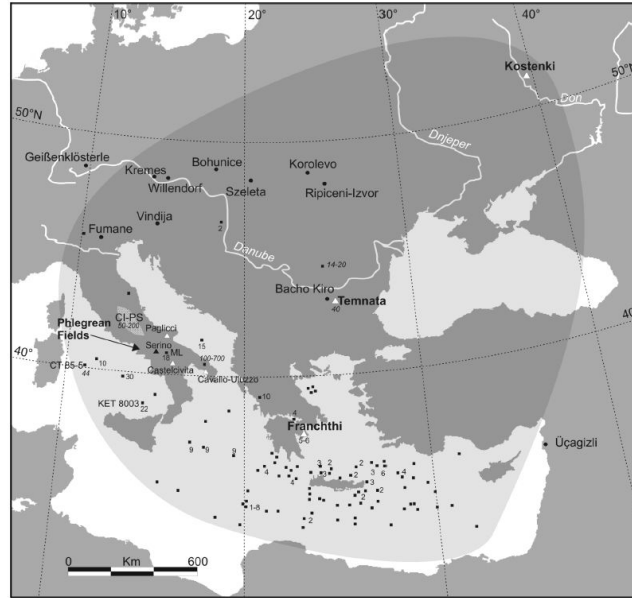


Figure 1. Geographic distribution of the Campanian Ignimbrite deposits, including archaeological and sampling sites mentioned in the paper. Solid squares: CI tephra occurrences and related thickness in cm (in italics if reworked) [modified from *Cornell et al., 1983; Amirkhanov et al., 1993; Cini Castagnoli et al., 1995; Narcisi and Vezzoli, 1999; Fedele et al., 2002; Upton et al., 2002*]. Dotted area in central Italy: distribution of the CI-derived paleosol (CI-PS [Frezza and Narcisi, 1996]). Solid triangles: archaeological sites with CI ash layer. Blank triangles: archaeological sites with ash layer attributed to the CI on the basis of cultural-stratigraphic position and ^{14}C dating (Fedele et al., 2002; Giaccio and Isaia, on file). Solid circles: selected European Palaeolithic sites within the area potentially affected by the CI air-fall.

FRANCHTHI CAVE (GREECE) = ID:45

Zde, CC BY-SA 4.0, via Wikimedia Commons



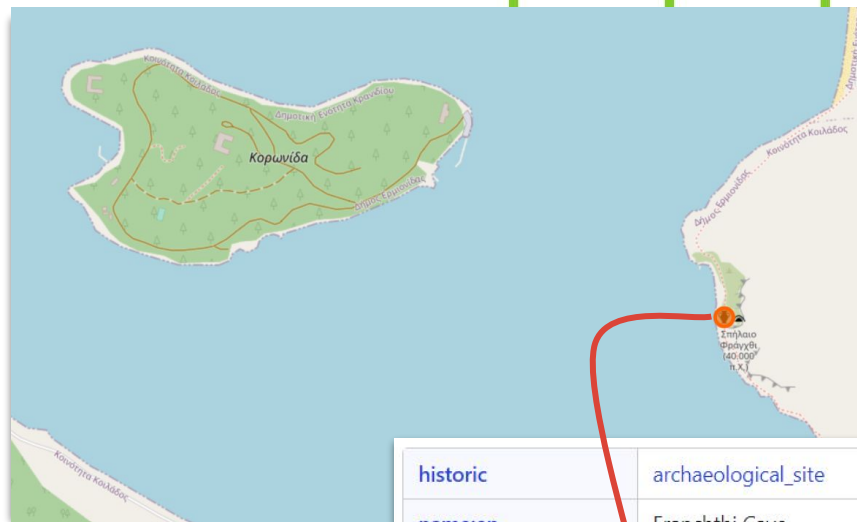
Zde, CC BY-SA 4.0, via Wikimedia Commons



Xalaros, Attribution, via Wikimedia Commons



<http://www.openstreetmap.org/node/1221172611>



Open Street Map Contributors, ODbL

historic	archaeological_site
name:en	Franchthi Cave
wikidata	Q1441331
wikipedia	en:Franchthi Cave

FRANCHTHI CAVE AS ARCHAEOLOGICAL SITE IN THE LOD CLOUD

Squirrel Data | CI FSL | powered by the Research Squirrel Engineers Network Nuts?

Franchthi Cave (Greece) EN

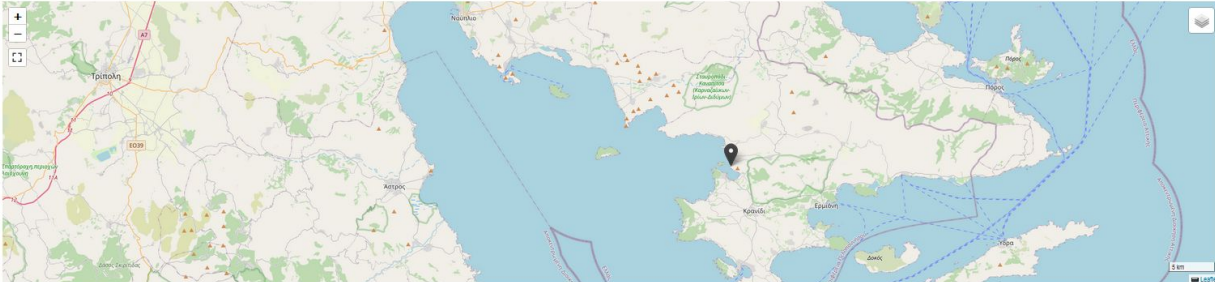
http://fuzzy-squirrel.link/data/cisite_45

The Franchthi Cave (Greece) resource is powered by Static GeoPubby generated using the SPARQLing Unicorn OGIS Plugin

Search: Download Options: format: Turtle (TTL) ☰

Description: comment:CI findspot related from literature

Description: scopeNote:CI findspot related from literature



Property	Value
certaintyDesc (fsl:certaintyDesc)	findspot mentioned in a scientific paper and found on OpenStreetMap (rdf:langString) (iso639:en)
certaintyLevel (fsl:certaintyLevel)	high (fsl:high) [x]
hasPreference (fsl:hasPreference)	Fedele et al., 2003 (xsd:string)
partOf (fsl:partOf)	Campanian-IgnimbriteProject (fsl:CampanianIgnimbriteProject) [x]
siteType (fsl:siteType)	archaeologicalSite (fsl:ArchaeologicalSite) [x]
spatialType (fsl:spatialType)	<ul style="list-style-type: none">ArchaeologicalSite (fsl:ArchaeologicalSite) [x]Cave (fsl:Cave) [x]
hasGeometry (gpp:hasGeometry)	cisite_45_geom (fsl:cisite_45_geom)
type (rdf:type)	<ul style="list-style-type: none">Entity (prov:Entity) [x]Place (fsl:Place) [x]Site (fsl:Site) [x]
comment (rdfs:comment)	CI findspot related from literature (rdf:langString) (iso639:en)
label (rdfs:label)	Franchthi Cave (Greece) (rdf:langString) (iso639:en)
closeMatch (skos:closeMatch)	<ul style="list-style-type: none">120177201 (Q21170201) [x]Q164531 (wikidata:Q164531) [x]
prefLabel (skos:prefLabel)	Franchthi Cave (Greece) (rdf:langString) (iso639:en)
scopeNote (skos:scopeNote)	CI findspot related from literature (rdf:langString) (iso639:en)
is member (rdfs:member) of	<ul style="list-style-type: none">Entity instances Collection (fsl:Entity_collection)Place instances Collection (fsl:Place_collection)Site instances Collection (fsl:Site_collection)
is used (prov:used) of	cisite_45_activity (fsl:cisite_45_activity)

FRANCHTHI CAVE IN THE LOD CLOUD

SPARQLing Unicorn QGIS Plugin

Linked Data Processing Queryhelfer Einstellungen Hilfe

Abfragen Interlinken Anreicherung (Experimentell)

Endpoint auswählen: Campanian Ignimbrite [GeoSPARQL Endpoint] Quick Add RDF Resource

Filter Concept Results:

Queryvorlagen: 10 Random Geometries Layer Name: CI Findspots Bulgaria

Valid Query

```
1 SELECT ?item ?geo ?itemLabel WHERE {
2 ?item <http://www.w3.org/1999/02/22-rdf-syntax-ns#type> <http://fuzzy-sl.squirrel.link/ontology/Site> .
3 ?item <http://www.opengis.net/ont/geosparql#hasGeometry> ?item_geom .
4 ?item_geom <http://www.opengis.net/ont/geosparql#asWKT> ?geo .
5 ?item rdfs:label ?itemLabel.
6 FILTER( regex(?itemLabel, "Bulgaria" ))
7 }
```

GeoConcepts (4) FeatureCollections Geon

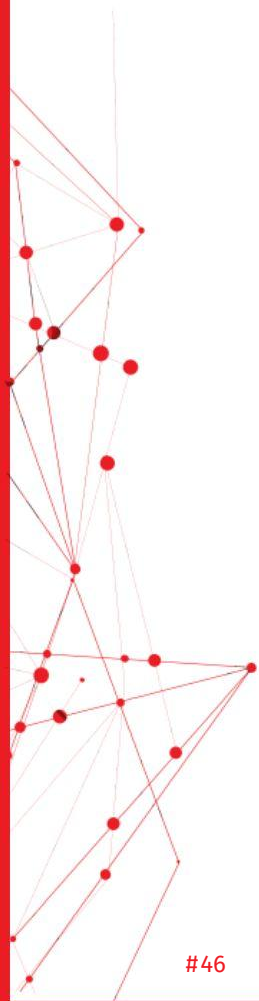
- Place
- ns1:Site
- prov:Entity
- sf:Point

Gespeicherte Queries: Query laden Queryname: Query speichern

Layer hinzufügen

Language for query results: English (en)

FINDSPOTS IN BULGARIA



FINDSPOTS IN BULGARIA



A



B



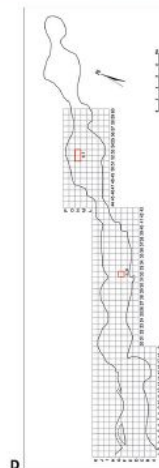
A



B

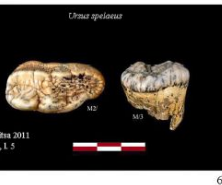
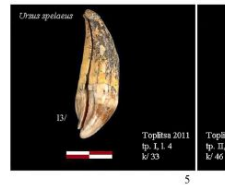
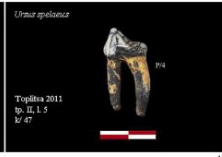
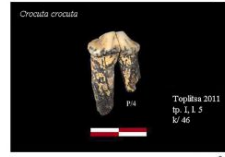


C

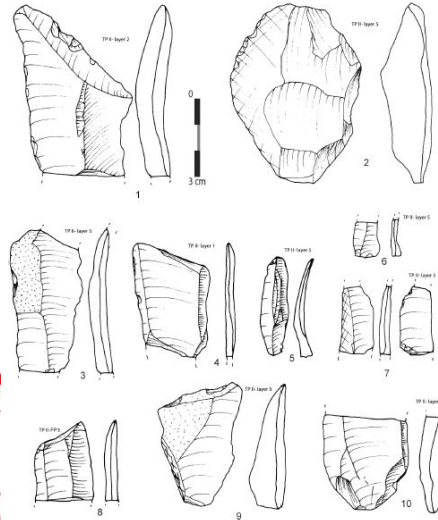


D

TOPLITSA CAVE (BULGARIA)



via <https://doi.org/10.1016/j.iasrep.2021.102912>
© Tsanova et al.



<http://www.openstreetmap.org/node/11109379095>



Open Street Map Contributors, ODbL

TOPLITSA CAVE AS ARCHAEOLOGICAL SITE IN THE LOD CLOUD

Squirrel Data | CI FSL | powered by the Research Squirrel Engineers Network Nuts?

Toplitsa Cave (Bulgaria)^{ci}

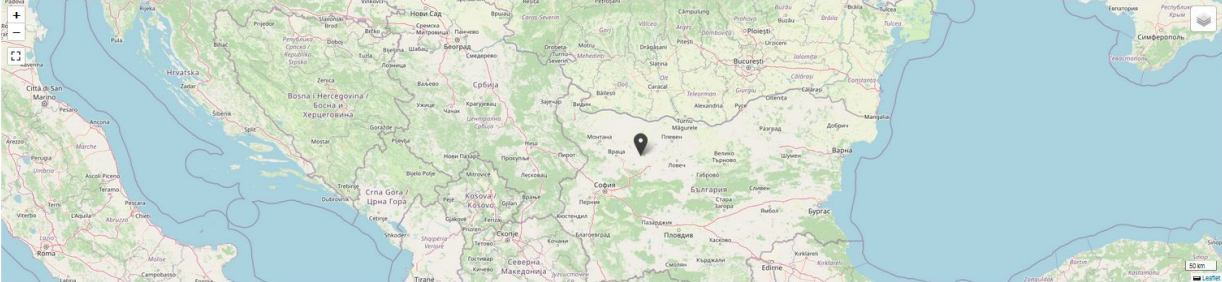
http://fuzzy-sl.squirrel.link/data/cisite_44

The Toplitsa Cave (Bulgaria) resource is powered by Static GeoPubby generated using the SPARQLing Unicorn QGIS Plugin

Search: Download options: format: Turtle (TTL)

Description: comment:CI findspot related from literature

Description: scopeNote:CI findspot related from literature



Property	Value
certaintyDesc (fsl:certaintyDesc)	findspot mentioned in a scientific paper (rdf:langstring) (isoc391.en)
certaintyLevel (fsl:certaintyLevel)	high (fsl:high) [x]
hasReference (fsl:hasReference)	Thanova et al., 2021 (xsd:string)
parent (fsl:parent)	Campanian ignimbrite project (fsl:CampanianIgnimbriteProject) [x]
siteType (fsl:siteType)	ArchaeologicalSite (fsl:ArchaeologicalSite) [x]
spatialType (fsl:spatialType)	<ul style="list-style-type: none">ArchaeologicalSite (fsl:ArchaeologicalSite) [x]Cave (fsl:Cave) [x]
hasGeometry (gsp:hasGeometry)	site_44_geom (fsl:site_44_geom)
type (rdf:type)	<ul style="list-style-type: none">Entity (prov:Entity) [x]Place (gsp:Place) [x]Site (fsl:Site) [x]
comment (rdf:comment)	CI findspot related from literature (rdf:langstring) (isoc391.en)
label (rdf:label)	Toplitsa Cave (Bulgaria) (rdf:langstring) (isoc391.en)
closeMatch (skos:closeMatch)	<ul style="list-style-type: none">1170179095 (1170179095) [x]Q6178899 (wikidata:Q6178899) [x]
prefLabel (skos:prefLabel)	Toplitsa Cave (Bulgaria) (rdf:langstring) (isoc391.en)
scopeNote (skos:scopeNote)	CI findspot related from literature (rdf:langstring) (isoc391.en)
is member (rdf:member) of	<ul style="list-style-type: none">Entity instances collection (fsl:Entity_collection)Place instances collection (fsl:Place_collection)Site instances collection (fsl:Site_collection)
is used (prov:used) of	site_44_activity (fsl:site_44_activity)

TOPLITSA CAVE IN THE LOD CLOUD

via <https://doi.org/10.1073/pnas.120457910> © Lowe et al.

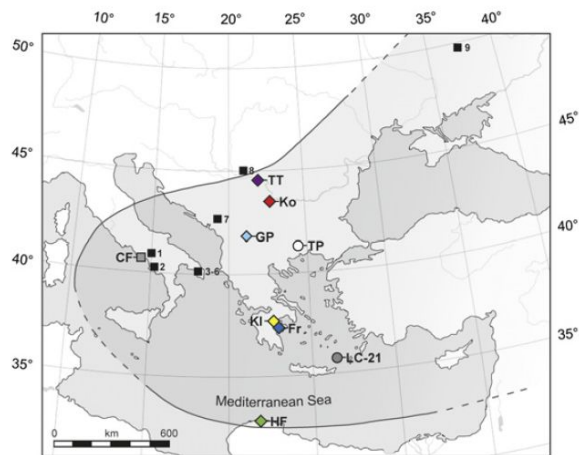


Fig. 2. Map of the preservation limits of visible layers of the CI (curved line in ref. 20), the location of its source at Campi Flegrei (CF), and positions of sites referred to in the text (symbols are explained in Fig. 3). Letters indicate sites examined within the Response of Humans to Abrupt Environmental Transitions Project: Fr, Franchthi; GP, Golema Pesht; HF, Haua Fteah; KI, Klissoura; Ko, Kozarnika; LC-21, EC-MAST2 PALAEO-FLUX cruise 1995, “Long Core 21”; TP, Tenaghi Philippon; TT, Tabula Traiana. Numbers refer to other sequences mentioned in the text: 1, Serino; 2, Castelcivita; 3, Cavallo; 4, Uluzzo; 5, Uluzzo C; 6, Bernardina; 7, Crvena Stijina; 8, Oase; 9, Kostenki 14.

via <https://doi.org/10.1016/j.quascirev.2022.107645> © Maryam Heydari et al.

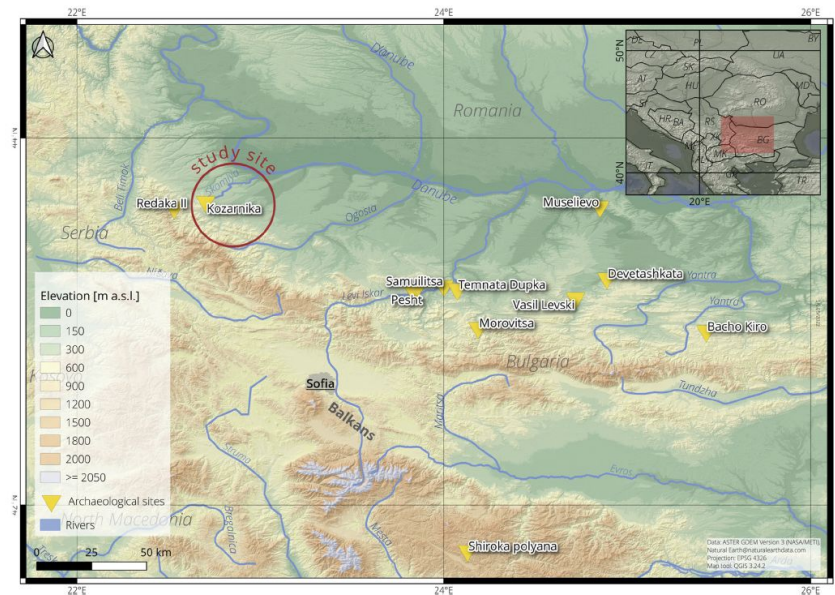
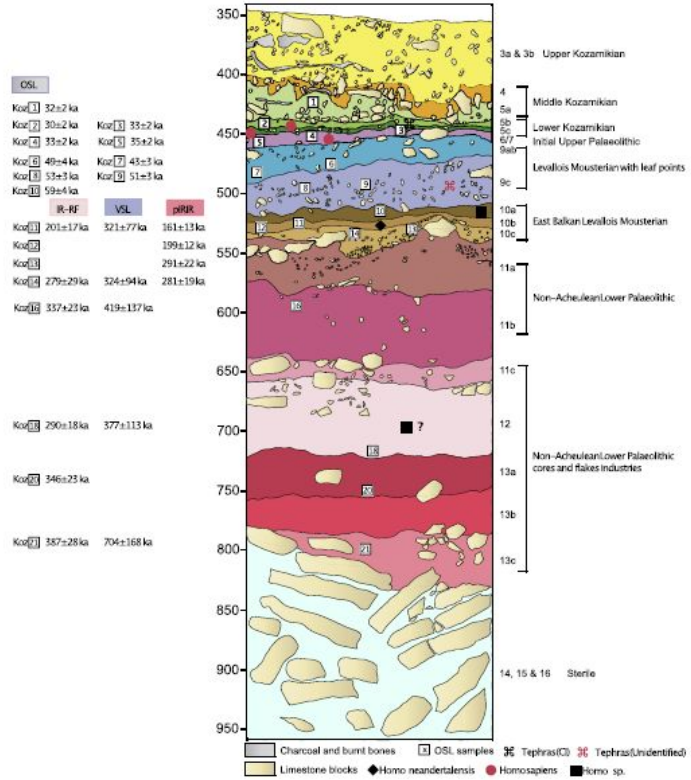


Fig. 1. The Kozarnika cave is located in the northern hills of the Balkan Mountains, ca 30 km south of the Danube River, in the northwest of Bulgaria.

KOZARNIKA CAVE (BULGARIA) = ID:42



<http://www.openstreetmap.org/node/881442373>



Open Street Map Contributors, ODbL

KOZARNIKA CAVE AS GEOLOGICAL SITE IN THE LOD CLOUD

Squirrel Data | CI FSL | powered by the Research Squirrel Engineers Network Nuts?

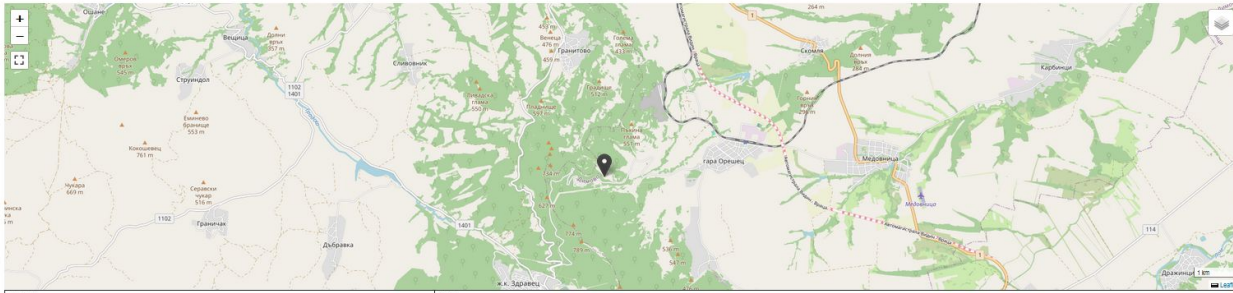
📍 Kozarnika Cave (Bulgaria) en

http://fuzzy-si.squirrel.link/data/cisite_42

The Kozarnika Cave (Bulgaria) resource is powered by Static GeoPubby generated using the SPARQLing Unicorn QGIS Plugin

Search: Download Options: Format: Turtle (TTL) ☰

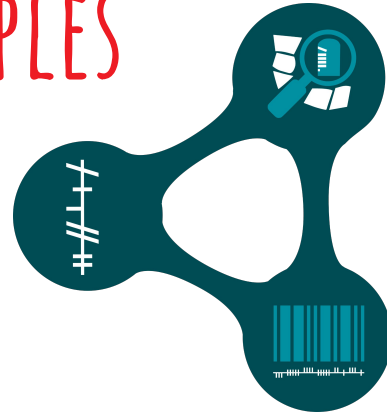
Description: comment:CI Findspot related from literature
Description: scopeNote:CI Findspot related from literature




Property	Value
<code>certaintyDesc</code> (fsl:certaintyDesc)	findspot mentioned in a scientific paper (rdf:langString) (iso639:en)
<code>certaintyLevel</code> (fsl:certaintyLevel)	high (fsl:high) [x]
<code>hasReference</code> (fsl:hasReference)	Lowe et al., 2012 (xsd:string)
<code>partOf</code> (fsl:partOf)	CampanianIgnimbriteProject (fsl:CampanianIgnimbriteProject) [x]
<code>siteType</code> (fsl:siteType)	ArchaeologicalSite (fsl:ArchaeologicalSite) [x]
<code>spatialType</code> (fsl:spatialType)	Cave (fsl:Cave) [x]
<code>hasGeometry</code> (gsp:hasGeometry)	<code>cisite_42_geom</code> (fsl:cisite_42_geom)
<code>type</code> (rdf:type)	<ul style="list-style-type: none">Entity (gsp:entity) [x]Place (placides:Place) [x]Site (fsl:Site) [x]
<code>comment</code> (rdfs:comment)	CI Findspot related from literature (rdf:langString) (iso639:en)
<code>label</code> (rdfs:label)	Kozarnika Cave (Bulgaria) (rdf:langString) (iso639:en)
<code>closeMatch</code> (skos:closeMatch)	<ul style="list-style-type: none">881644279 (skos:closeMatch) [x]0207933 (wikidata:0207933) [x]
<code>prefLabel</code> (skos:prefLabel)	Kozarnika Cave (Bulgaria) (rdf:langString) (iso639:en)
<code>scopeNote</code> (skos:scopeNote)	CI Findspot related from literature (rdf:langString) (iso639:en)
<code>is member of</code> (rdfs:member) of	<ul style="list-style-type: none">Entity instances Collection (fsl:entity_collection)Place instances Collection (fsl:Place_collection)Site instances Collection (fsl:Site_collection)
<code>is used</code> (prov:used) of	<code>cisite_42_activity</code> (fsl:cisite_42_activity)


KOZARNIKA CAVE IN THE LOD CLOUD

OGHAM EXAMPLES




Squirrel Data | Linked Open Ogham | powered by the Research Squirrel Engineers Network

Linked Ogham 

 **Munster**^{EN}
<http://lod.ogham.link/data/GSD3000003>

The Munster resource is powered by Static GeoPubby generated using the SPARQLing Unicorn QGIS Plugin

Search: Go **Download Options:** Format: ☰



Property	Value
<code>exactMatch</code> (oghamonto:exactMatch)	<code>Q131438</code> (wde:Q131438) [x]
<code>hasGeometry</code> (gsp:hasGeometry)	<code>GSD3000003_geom</code> (fslid:GSD3000003_geom)
<code>type</code> (rdfs:type)	<ul style="list-style-type: none">• <code>Feature</code> (gsp:Feature) [x]• <code>Province</code> (oghamonto:Province) [x]
<code>label</code> (rdfs:label)	<code>Munster</code> (rdfs:langString) (iso6391:en)
<code>is member</code> (rdfs:member) of	<ul style="list-style-type: none">• <code>Feature Instances Collection</code> (fslid:Feature_collection)• <code>Province Instances Collection</code> (fslid:Province_collection)

OGHAM STONES IN THE PROVINCE MUNSTER

SPARQLing Unicorn QGIS Plugin

Linked Data Processing Queryhelfer Einstellungen Hilfe

Abfragen Interlinken Anreicherung (Experimentell)

Endpoint auswählen: Linked Open Ogham [GeoSPARQL Endpoint] Quick Add RDF Resource Filter Concept Results:

Queryvorlagen: 10 Random Geometries Layer Name: Ogham Province Munster

Valid Query

```
1 SELECT DISTINCT ?item ?geo ?label WHERE {
2 ?item rdfs:label ?label .
3 ?item <http://ontology.ogham.link/within> <http://lod.ogham.link/data/GSD3000003> .
4 ?item <http://www.opengis.net/ont/geosparql#hasGeometry> ?item_geom .
5 ?item_geom <http://www.opengis.net/ont/geosparql#asWKT> ?geo .
6 }
```

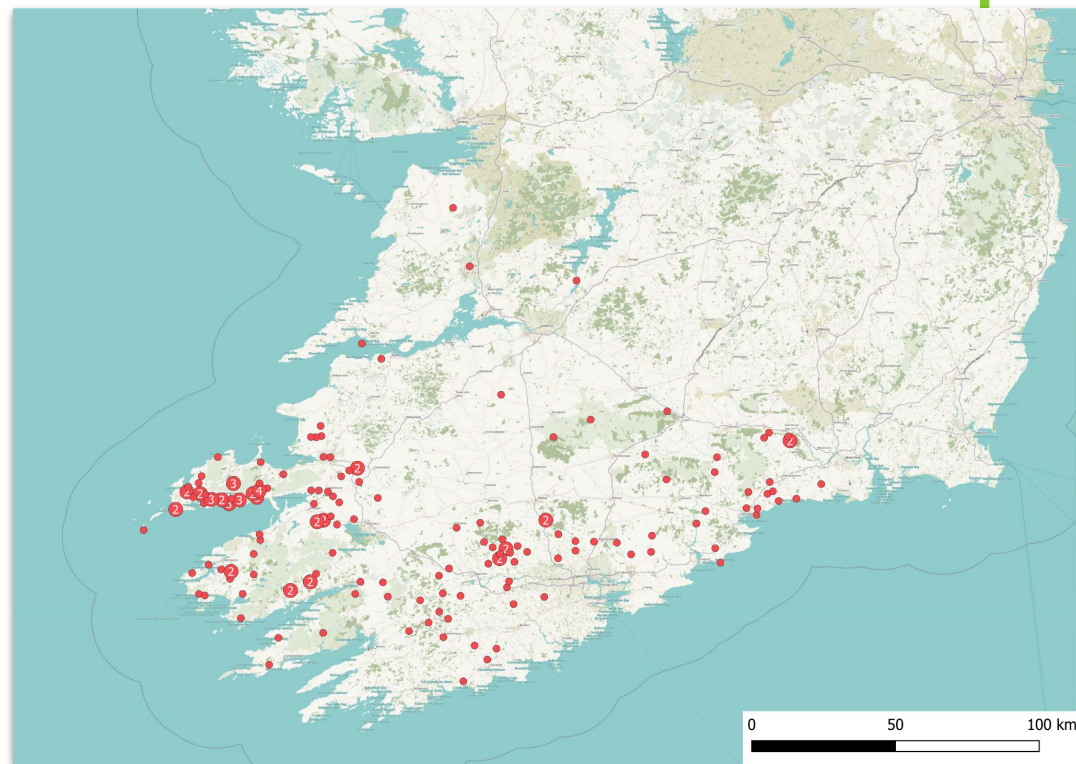
Gespeicherte Queries: Query laden Queryname: Query speichern

Layer hinzufügen Language for query results: English (en)

GeoConcepts (11) FeatureCollections Geo

- Barony
- Location
- Place
- gsp:Feature
- ns1:Barony
- ns1:GeographicLocation
- ns1:Island
- ns1:OghamSite
- ns1:Province
- sf:MultiPolygon
- sf:Point

OGHAM STONES IN THE PROVINCE MUNSTER



OGHAM STONES IN THE PROVINCE MUNSTER


Squirrel Data | Linked Open Ogham | powered by the Research Squirrel Engineers Network

Linked Ogham

Corca Dhuibhne^{EN}
<http://lod.ogham.link/data/GSD5000077>

The Corca Dhuibhne resource is powered by Static GeoPubby generated using the SPARQLing Unicorn QGIS Plugin

Search: Go Download Options: Format: Turtle (TTL) Download



30 km

Property	Value
<code>exactMatch</code> (oghamonto:exactMatch)	Q59419929 (wde:Q59419929) [x]
<code>hasGeometry</code> (gsp:hasGeometry)	GSD5000077_geom (fslid:GSD5000077_geom)
<code>type</code> (rdf:type)	<ul style="list-style-type: none">Barony (oghamonto:Barony) [x]Barony (Barony) [x]Feature (gsp:Feature) [x]
<code>label</code> (rdfs:label)	<ul style="list-style-type: none">Corca Dhuibhne (rdflangString) (iso6391:en)Corkaguiny (rdflangString) (iso6391:en)
<code>is member of</code> (rdfs:member) of	<ul style="list-style-type: none">Barony Instances Collection (fslid:Barony_collection)Feature Instances Collection (fslid:Feature_collection)

OGHAM STONES IN THE BARONY CORCA DHUIBHNE

SPARQLing Unicorn QGIS Plugin

Linked Data Processing Queryhelfer Einstellungen Hilfe

Abfragen Interlinken Anreicherung (Experimentell)

Endpoint auswählen: Linked Open Ogham [GeoSPARQL Endpoint] Quick Add RDF Resource Filter Concept Results:

Queryvorlagen: 10 Random Geometries Layer Name: Ogham Barony Corca Dhuibhne

Valid Query

```
1 SELECT DISTINCT ?item ?geo ?stone ?itemLabel ?stoneLabel WHERE {
2 ?item rdfs:label ?itemLabel .
3 ?stone rdfs:label ?stoneLabel .
4 ?stone a <http://ontology.ogham.link/OghamStone_CIIC> .
5 ?stone <http://ontology.ogham.link/disclosedAt> ?item.
6 ?item <http://ontology.ogham.link/within> <http://lod.ogham.link/data/GSD5000077> .
7 ?item <http://www.opengis.net/ont/geosparql#hasGeometry> ?item_geom .
8 ?item_geom <http://www.opengis.net/ont/geosparql#asWKT> ?geo .
9 }
```

Gespeicherte Queries: Query laden Queryname: Query speichern

Layer hinzufügen Language for query results: English (en)

GeoConcepts (11) FeatureCollections Geo


- Barony
- Location
- Place
- gsp:Feature
- ns1:Barony
- ns1:GeographicLocation
- ns1:Island
- ns1:OghamSite
- ns1:Province
- sf:MultiPolygon
- sf:Point


OGHAM STONES IN THE BARONY CORCA DHUIBHNE



OGHAM STONES IN THE BARONY CORCA DHUIBHNE

Squirrel Data | Linked Open Ogham | powered by the Research Squirrel Engineers Network

Linked Ogham 

 **MAQI**_{EN}
<http://lod.ogham.link/data/OW6>

The MAQI resource is powered by Static [GeoPubby](#) generated using the SPARQLing Unicorn QGIS Plugin

Search: Go **Download Options:** Format: Turtle (TTL)

Property	Value
<code>context</code> (oghamonto:context)	<code>{([P] MAQI [P]),([P] MAQI MUCOI [P]),([P] MAQI [P] MUCOI [P]),([P] KOI MAQI MUCOI [P]),([P] MAQI [P] MAQI MUCOI [P]),([ANM [P] MAQI [P]),([P] MAQI [P] (...))}</code> (<code>rdflangString</code>) (<code>iso639:en</code>)
<code>exactMatch</code> (oghamonto:exactMatch)	<code>Q67381254</code> (<code>wde:Q67381254</code>) [x]
<code>reference</code> (oghamonto:reference)	<code>McManus 1991,§6.27</code> (<code>rdflangString</code>) (<code>iso639:en</code>)
<code>translation</code> (oghamonto:translation)	<code>son</code> (<code>rdflangString</code>) (<code>iso639:en</code>)
<code>type</code> (rdftype)	<ul style="list-style-type: none">• <code>Concept</code> (<code>skos:Concept</code>) [x]• <code>FormulaWord</code> (<code>oghamonto:FormulaWord</code>) [x]• <code>Word</code> (<code>oghamonto:Word</code>) [x]
<code>label</code> (rdfs:label)	<ul style="list-style-type: none">• <code>MAQI</code> (<code>rdflangString</code>) (<code>iso639:en</code>)• <code>MAQI</code> (<code>rdflangString</code>) (<code>iso639:goide</code>)
<code>altLabel</code> (skos:altLabel)	<ul style="list-style-type: none">• 14 values
<code>prefLabel</code> (skos:prefLabel)	<ul style="list-style-type: none">• <code>MAQI</code> (<code>rdflangString</code>) (<code>iso639:en</code>)• <code>MAQI</code> (<code>rdflangString</code>) (<code>iso639:goide</code>)
<code>is member</code> (rdfs:member) of	<ul style="list-style-type: none">• <code>Concept Instances Collection</code> (<code>fsid:Concept_collection</code>)• <code>FormulaWord Instances Collection</code> (<code>fsid:FormulaWord_collection</code>)• <code>Word Instances Collection</code> (<code>fsid:Word_collection</code>)

Metadata

Property	Value
<code>creator</code> (terms:creator)	<code>0000-0002-3246-3531</code> (<code>0000-0002-3246-3531</code>) [x]
<code>license</code> (terms:license)	<code>deed.de</code> (<code>deed.de</code>) [x]
<code>rightsHolder</code> (terms:rightsHolder)	<ul style="list-style-type: none">• <code>0000-0002-3246-3531</code> (<code>0000-0002-3246-3531</code>) [x]• <code>Q70310399</code> (<code>wde:Q70310399</code>) [x]
<code>inDataset</code> (void:inDataset)	<code>Linked_Open_Ogham</code> (<code>fsid:Linked_Open_Ogham</code>) [2481 prov:endedAtTime]
<code>wasAttributedTo</code> (prov:wasAttributedTo)	<code>PythonStonesCHC</code> (<code>fsid:PythonStonesCHC</code>)
<code>wasDerivedFrom</code> (prov:wasDerivedFrom)	<code>og_words.csv</code> (<code>og_words.csv</code>) [x]
<code>wasGeneratedBy</code> (prov:wasGeneratedBy)	<code>OW6_activity</code> (<code>fsid:OW6_activity</code>)

published under [CC BY 4.0](#) by [Research Squirrel Engineers Network](#)
[Impressum](#) / [Legal Notice](#) | [Datenschutz](#) / [Privacy Policy](#)

OGHAM STONES WITH WORD MAQI (=SON OF)

SPARQLing Unicorn QGIS Plugin

Linked Data Processing Queryhelfer Einstellungen Hilfe

Abfragen Interlinken Anreicherung (Experimentell)

Endpoint auswählen: Linked Open Ogham [GeoSPARQL Endpoint] Quick Add RDF Resource Filter Concept Results:

Queryvorlagen: 10 Random Geometries Layer Name: Ogham Word MAQI

Valid Query

```
1 SELECT DISTINCT ?item ?geo ?itemLabel ?stone ?stoneLabel ?readingLabel WHERE {
2 ?stone <http://ontology.ogham.link/shows> <http://lod.ogham.link/data/OW6> .
3 ?stone rdfs:label ?stoneLabel .
4 ?stone a <http://ontology.ogham.link/OghamStone_CIIC> .
5 ?stone <http://ontology.ogham.link/disclosedAt> ?item.
6 ?item rdfs:label ?itemLabel .
7 ?item <http://www.opengis.net/ont/geosparql#hasGeometry> ?item_geom .
8 ?item_geom <http://www.opengis.net/ont/geosparql#asWKT> ?geo .
9 ?stone <http://ontology.ogham.link/carries> ?inscription .
10 ?inscription <http://ontology.ogham.link/identifiedAs> ?reading .
11 ?reading rdfs:label ?readingLabel.
12 FILTER (lang(?readingLabel) = 'en')
13 }
```

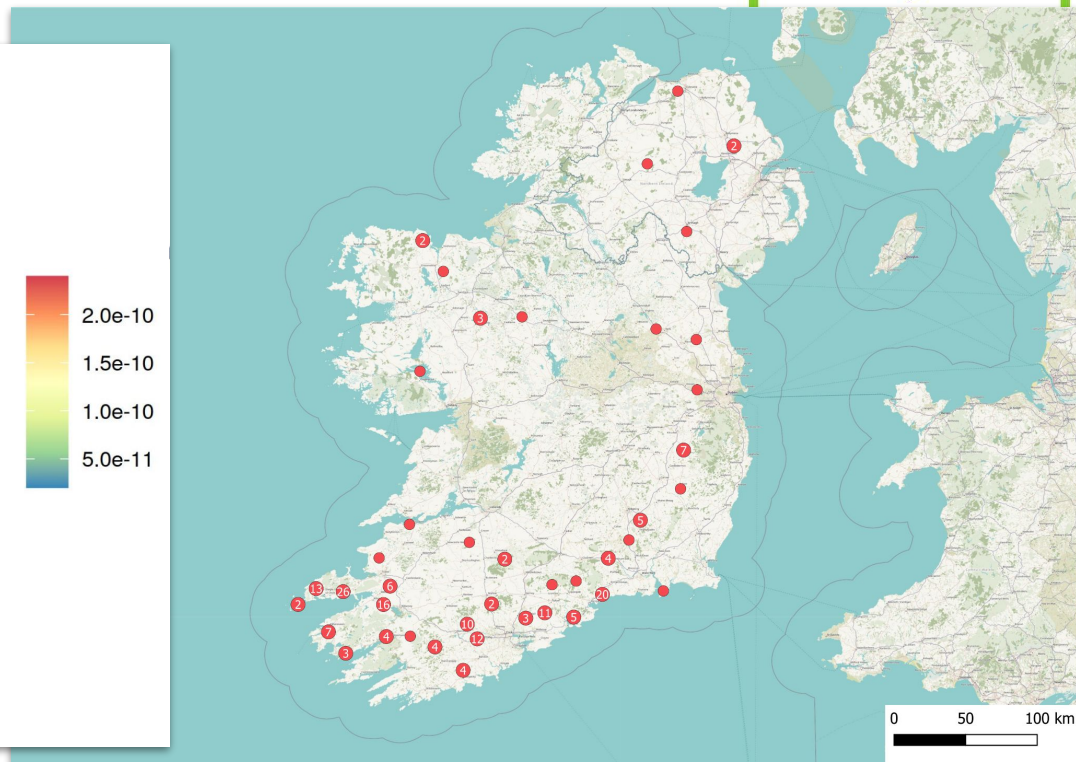
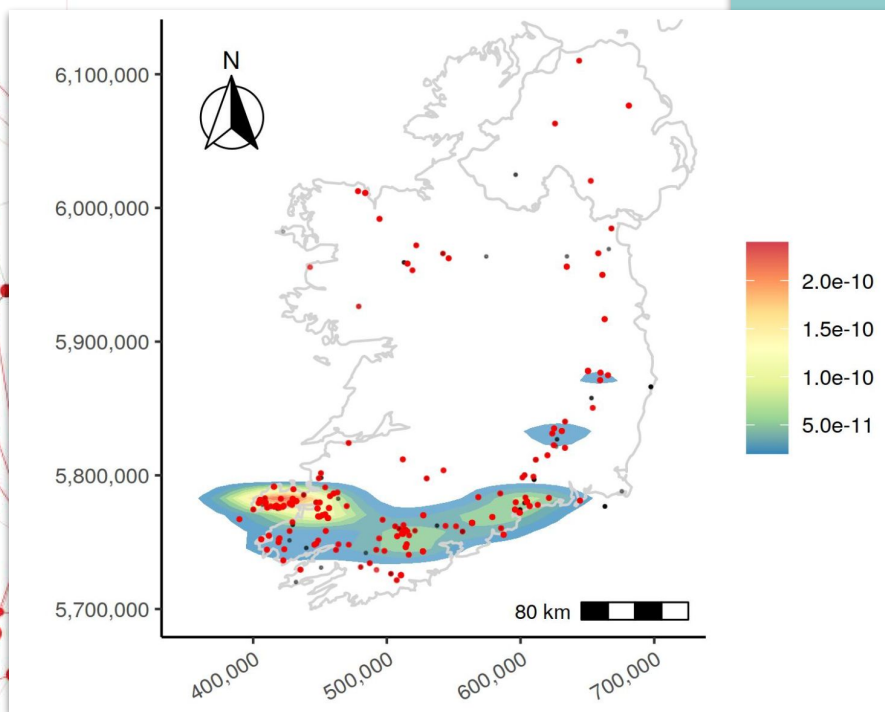
Gespeicherte Queries: Query laden Queryname: Query speichern

Layer hinzufügen Language for query results: English (en)

GeoConcepts (11) FeatureCollections Geo

- Barony
- Location
- Place
- gsp:Feature
- ns1:Barony
- ns1:GeographicLocation
- ns1:Island
- ns1:OghamSite
- ns1:Province
- sf:MultiPolygon
- sf:Point

OGHAM STONES WITH WORD MAQI (=SON OF)



OGHAM STONES WITH WORD MAQI (=SON OF)



<http://lod.ogham.link/data/OP400178>

The **dovviniias** resource is powered by Static [GeoPubby](#) generated using the [SPARQLing Unicorn QGIS Plugin](#)

Search: Go **Download Options:** Format: Turtle (TTL)

Property	Value
label_upper	<ul style="list-style-type: none">• DOVVINIAS (rdflangString) (iso6391:en)• DOVVINIAS (rdflangString) (iso6391:goide)
type (rdf:type)	<ul style="list-style-type: none">• Concept (skos:Concept) [x]• Person (oghamonto:Person) [x]
label (rdfs:label)	<ul style="list-style-type: none">• dovviniias (rdflangString) (iso6391:en)• dovviniias (rdflangString) (iso6391:goide)
prefLabel (skos:prefLabel)	<ul style="list-style-type: none">• dovviniias (rdflangString) (iso6391:en)• dovviniias (rdflangString) (iso6391:goide)
is member (rdfs:member) of	<ul style="list-style-type: none">• Concept Instances Collection (fsld:Concept_collection)• Person Instances Collection (fsld:Person_collection)

Metadata

Property	Value
creator (terms:creator)	0000-0002-3246-3531 (0000-0002-3246-3531) [x]
license (terms:license)	deed.en_US (deed.en_US) [x]
rightsHolder (terms:rightsHolder)	<ul style="list-style-type: none">• 0000-0002-3246-3531 (0000-0002-3246-3531) [x]• Q106628017 (wde:Q106628017) [x]• Q106674066 (wde:Q106674066) [x]
inDataset (void:inDataset)	Linked_Open_Ogham (fsld:Linked_Open_Ogham) [2481 prov:endedAtTime]
wasAttributedTo (prov:wasAttributedTo)	PythonStonesCIIC (fsld:PythonStonesCIIC)
wasDerivedFrom (prov:wasDerivedFrom)	og_persons.csv (og_persons.csv) [x]
wasGeneratedBy (prov:wasGeneratedBy)	OP400178_activity (fsld:OP400178_activity)

OGHAM STONES WITH PERSON "DOVVINIAS"

SPARQLing Unicorn QGIS Plugin

Linked Data Processing Queryhelfer Einstellungen Hilfe

Abfragen Interlinken Anreicherung (Experimentell)

Endpoint auswählen: Linked Open Ogham [GeoSPARQL Endpoint] Quick Add RDF Resource Filter Concept Results:

Queryvorlagen: 10 Random Geometries Layer Name: Ogham Person dovvinias

Valid Query

```
1 SELECT DISTINCT ?item ?geo ?itemLabel ?stone ?stoneLabel WHERE {
2 ?stone <http://ontology.ogham.link/shows> <http://lod.ogham.link/data/OP400178> .
3 ?stone rdfs:label ?stoneLabel .
4 ?stone a <http://ontology.ogham.link/OghamStone_CISP> .
5 ?stone <http://ontology.ogham.link/disclosedAt> ?item.
6 ?item rdfs:label ?itemLabel .
7 ?item <http://www.opengis.net/ont/geosparql#hasGeometry> ?item_geom .
8 ?item_geom <http://www.opengis.net/ont/geosparql#asWKT> ?geo .
9 }
```

Gespeicherte Queries: Query laden Queryname: Query speichern

Layer hinzufügen Language for query results: English (en)

GeoConcepts (11) FeatureCollections Geo

- Barony
- Location
- Place
- gsp:Feature
- ns1:Barony
- ns1:GeographicLocation
- ns1:Island
- ns1:OghamSite
- ns1:Province
- sf:MultiPolygon
- sf:Point

OGHAM STONES WITH PERSON "DOVVINIAS"

dovoni
[Dovoni](#) (AUQH/1)

dovviniias
[Dovviniias](#) (BALIG/3) [Dovviniias](#) (BALIG/7) [Dovviniias](#) (BLTAG/2)

dragun
[Dragun](#) (GALPR/15)



OGHAM STONES WITH PERSON "DOVVINIAS"

netasegamonas^{EN}

<http://lod.ogham.link/data/OP400378>

The netasegamonas resource is powered by Static [GeoPubby](#) generated using the [SPARQLing Unicorn QGIS Plugin](#)

Search: Go **Download Options:** Format:

Property	Value
label_upper	<ul style="list-style-type: none">NETA-SEGAMONAS (rdflangString) (iso639:en)NETA-SEGAMONAS (rdflangString) (iso639:goide)
type (rdf:type)	<ul style="list-style-type: none">Concept (skos:Concept) [x]Person (oghamonto:Person) [x]
label (rdfs:label)	<ul style="list-style-type: none">netasegamonas (rdflangString) (iso639:en)netasegamonas (rdflangString) (iso639:goide)
prefLabel (skos:prefLabel)	<ul style="list-style-type: none">netasegamonas (rdflangString) (iso639:en)netasegamonas (rdflangString) (iso639:goide)
is member (rdfs:member) of	<ul style="list-style-type: none">Concept Instances Collection (fslid:Concept_collection)Person Instances Collection (fslid:Person_collection)

Metadata

Property	Value
creator (terms:creator)	0000-0002-3246-3531 (0000-0002-3246-3531) [x]
license (terms:license)	deed.en_US (deed.en_US) [x]
rightsHolder (terms:rightsHolder)	<ul style="list-style-type: none">0000-0002-3246-3531 (0000-0002-3246-3531) [x]Q106628017 (wde:Q106628017) [x]Q106674066 (wde:Q106674066) [x]
inDataset (void:inDataset)	Linked_Open_Ogham (fslid:Linked_Open_Ogham) [2481 prov:endedAtTime]
wasAttributedTo (prov:wasAttributedTo)	PythonStonesCIC (fslid:PythonStonesCIC)
wasDerivedFrom (prov:wasDerivedFrom)	og_persons.csv (og_persons.csv) [x]
wasGeneratedBy (prov:wasGeneratedBy)	OP400378_activity (fslid:OP400378_activity)

OGHAM STONES WITH PERSON "NETASEGAMONAS"

SPARQLing Unicorn QGIS Plugin

Linked Data Processing Queryhelfer Einstellungen Hilfe

Abfragen Interlinken Anreicherung (Experimentell)

Endpoint auswählen:

Filter Concept Results:

Queryvorlagen: Layer Name:

Valid Query

```
1 SELECT DISTINCT ?item ?geo ?itemLabel ?stone ?stoneLabel WHERE {
2 ?stone <http://ontology.ogham.link/shows> <http://lod.ogham.link/data/OP400378> .
3 ?stone rdfs:label ?stoneLabel .
4 ?stone a <http://ontology.ogham.link/OghamStone_CISP> .
5 ?stone <http://ontology.ogham.link/disclosedAt> ?item.
6 ?item rdfs:label ?itemLabel .
7 ?item <http://www.opengis.net/ont/geosparql#hasGeometry> ?item_geom .
8 ?item_geom <http://www.opengis.net/ont/geosparql#asWKT> ?geo .
9 }
```

GeoConcepts (11) FeatureCollections Geo

- Barony
- Location
- Place
- gsp:Feature
- ns1:Barony
- ns1:GeographicLocation
- ns1:Island
- ns1:OghamSite
- ns1:Province
- sf:MultiPolygon
- sf:Point

Gespeicherte Queries: Queryname:

Language for query results:

OGHAM STONES WITH PERSON "NETASEGAMONAS"

netancunas

[Ne\[ancun\]as](#) (DRUML/7)

netasegamonas

[Neta-S\[egam\]onas](#) (KNBOY/1) [Neta-Segamonas](#) (OLDIS/1) [Neta-Segamonas](#) (AMORE/1)

netavroqi

[Netavroqi](#) (BLVOO/2)

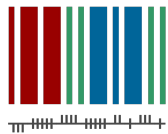


OGHAM STONES WITH PERSON "NETASEGAMONAS"

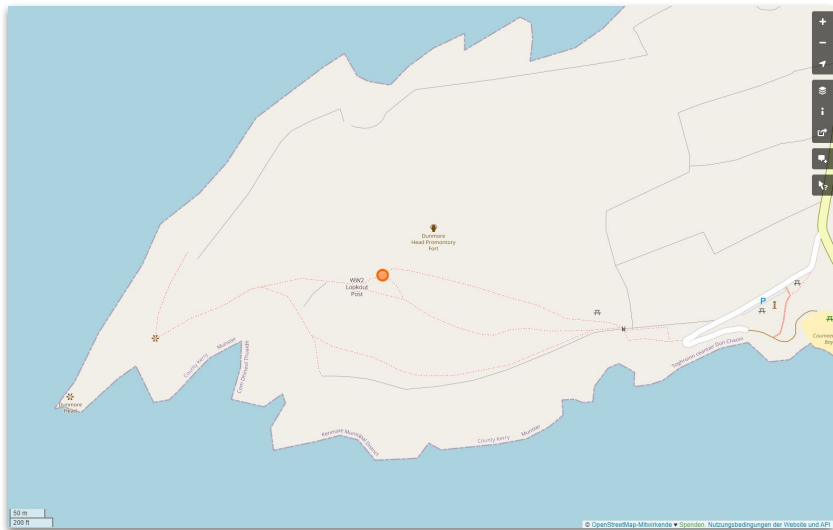
ME & MY DAD IN IRELAND...



CIIC 178



- COUMEENOLE NORTH / DUNMORE HEAD
- OSM: NODE/5145413640
- WIKIDATA: Q70892682
- O3D: 178. _COUMEENOLE
- SMR: KE052-059002-



Knoten: CIIC 178 (5145413640)

Version #8

added historic site #NationalMonuments

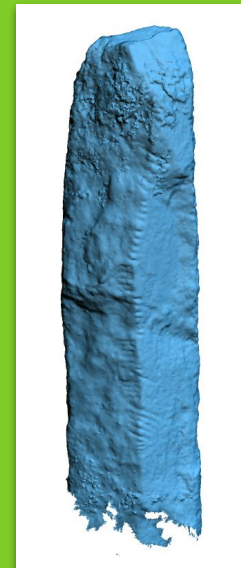
Bearbeitet vor .weniger.als.einer.Minute von fthieryge

Änderungssatz #133566233

Standort: 52,1102476, -10,4731913

Tags

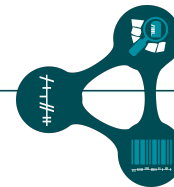
historic	ogham_stone
inscription	ERC MAQI MAQI- ERCIAS MU DOVINIA
moved	no
name	CIIC 178
project	ogham.link
ref:ISmr	KE052-059002-
source	survey
wikidata	Q70892682
wikimedia_commons	File:Coumeenole_O gham_Stone_(Dunm ore_Head).jpg



↑ Ogham in 3D Project, DIAS,
CC BY-NC-SA 3.0 Ireland

CIIC 178 (Ogham Stone Concept by RAS Macalister)^{EN}

<http://lod.ogham.link/data/Y10000088>



The CIIC 178 (Ogham Stone Concept by RAS Macalister) resource is powered by Static [GeoPubby](#) generated using the SPARQLing [Unicorn QGIS Plugin](#)

Search: Go Download Options: Format:

Description: comment:Ogham Stone, Ireland

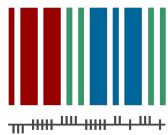
Property	Value
disclosedAt (oghamonto:disclosedAt)	OS40000083 (fslid:OS40000083)
exactMatch (oghamonto:exactMatch)	Q70892682 (wde:Q70892682) [x]
shows (oghamonto:shows)	<ul style="list-style-type: none">• OW13 (fslid:OW13)• OW18 (fslid:OW18)• OW52 (fslid:OW52)• OW6 (fslid:OW6)
type (rdf:type)	<ul style="list-style-type: none">• OghamStone (oghamonto:OghamStone) [x]• OghamStone_CIC (oghamonto:OghamStone_CIC) [x]• Resource (ldp:Resource) [x]• Resource (Resource) [x]
comment (rdfs:comment)	Ogham Stone, Ireland (rdflangString) (iso6391:en)
label (rdfs:label)	CIIC 178 (Ogham Stone Concept by RAS Macalister) (rdflangString) (iso6391:en)

Metadata

Property	Value
identifier (dce:identifier)	178 (xsd:string)
creator (terms:creator)	0000-0002-3246-3531 (0000-0002-3246-3531) [x]
license (terms:license)	deed.de (deed.de) [x]
rightsHolder (terms:rightsHolder)	<ul style="list-style-type: none">• 0000-0002-3246-3531 (0000-0002-3246-3531) [x]• 0000-0003-4696-2101 (0000-0003-4696-2101) [x]
inDataset (void:inDataset)	Linked_Open_Ogham (fslid:Linked_Open_Ogham) [1367 oghamonto:shows]
wasAttributedTo (prov:wasAttributedTo)	PythonStonesCIIC (fslid:PythonStonesCIIC)
wasDerivedFrom (prov:wasDerivedFrom)	og_stones.csv (og_stones.csv) [x]
wasGeneratedBy (prov:wasGeneratedBy)	Y10000088_activity (fslid:Y10000088_activity)

CIIC 178

CIIC 187



- KILMALKEDAR CHURCH (CILL MAOILCHÉADAIR)
- OSM: NODE/9110402648
- WIKIDATA: Q70892706
- O3D: 187._KILMALKEDAR
- SMR: KE052-059002-



Knoten: CIIC 187 (9110402648)

Version #5

small fixes


Bearbeitet vor 20 Tagen von fthierygoe
Änderungssatz #125625590
Standort: 52.1847478, -10.3364628

Tags

historic	ogham_stone
image	https://www.flickr.com/photos/196367420@N05/52324823400/rn/album-72177720301745883/
inscription	ANM MAILE-INBIR MACI BROCANN
name	CIIC 187
project	ogham.link
source	https://holywells.corkkerry.com/2019/08/21/two-wells-a-whole-lot-more-at-cill-mhaoilcheadair/survey
wikidata	Q70892706




↑ Ogham in 3D Project, DIAS, CC BY-NC-SA 3.0 Ireland

Squirrel Data | Linked Open Ogham | powered by the Research Squirrel Engineers Network Linked Ogham 

CIIC 187 (Ogham Stone Concept by RAS Macalister)^{EN}

<http://lod.ogham.link/data/Y10000098>

The CIIC 187 (Ogham Stone Concept by RAS Macalister) resource is powered by Static [GeoPubby](#) generated using the [SPARQLing Unicorn QGIS Plugin](#)

Search: Go Download Options: Format:  Download

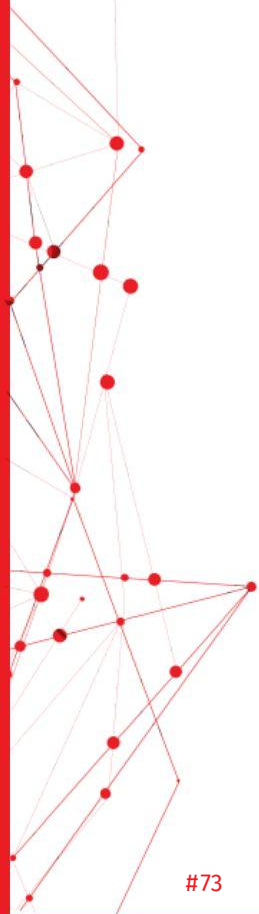
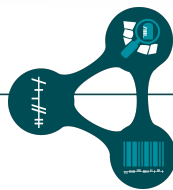
Description: comment:Ogham Stone, Ireland

Property	Value
disclosedAt (oghamonto:disclosedAt)	OS40000162 (fslid:OS40000162)
exactMatch (oghamonto:exactMatch)	Q70892706 (wde:Q70892706) [x]
shows (oghamonto:shows)	<ul style="list-style-type: none">OW1 (fslid:OW1)OW4 (fslid:OW4)OW6 (fslid:OW6)OW62 (fslid:OW62)
type (rdf:type)	<ul style="list-style-type: none">OghamStone (oghamonto:OghamStone) [x]OghamStone_CIIC (oghamonto:OghamStone_CIIC) [x]Resource (http:Resource) [x]Resource (Resource) [x]
comment (rdfs:comment)	Ogham Stone, Ireland (rdf:langString) (iso639:en)
label (rdfs:label)	CIIC 187 (Ogham Stone Concept by RAS Macalister) (rdf:langString) (iso639:en)

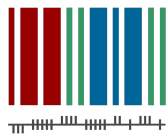
Metadata

Property	Value
identifier (dce:identifier)	187 (xsd:string)
creator (terms:creator)	0000-0002-3246-3531 (0000-0002-3246-3531) [x]
license (terms:license)	deed.de (deed.de) [x]
rightsHolder (terms:rightsHolder)	<ul style="list-style-type: none">0000-0002-3246-3531 (0000-0002-3246-3531) [x]0000-0003-4696-2101 (0000-0003-4696-2101) [x]
inDataset (void:inDataset)	Linked_Open_Ogham (fslid:Linked_Open_Ogham) [1367 oghamonto:shows]
wasAttributedTo (prov:wasAttributedTo)	PythonStonesCIIC (fslid:PythonStonesCIIC)
wasDerivedFrom (prov:wasDerivedFrom)	og_stones.csv (og_stones.csv) [x]
wasGeneratedBy (prov:wasGeneratedBy)	Y10000098_activity (fslid:Y10000098_activity)

published under [CC BY 4.0](#) by [Research Squirrel Engineers Network](#)
[Impressum](#) / [Legal Notice](#) | [Datenschutz](#) / [Privacy Policy](#)



CIIC 242



- AGHADOE CHURCH (RUINE)
- OSM: NODE/10040757680
- WIKIDATA: Q70892852
- O3D: 242._PARKAVONEAR
- SMR: KE066-016009-



Knoten: CIIC 242 (10040757680)

Version #3

add SMR number

Bearbeitet vor einer Minute von fthierrygeo

Änderungssatz #133566349

Standort: 52,0767683, -9,5543233

Tags

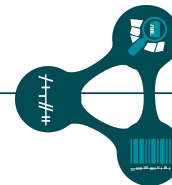
historic	ogham_stone
inscription	BRRUANANN
moved	no
name	CIIC 242
project	ogham.link
ref:IE:smr	KE066-016009-
source	survey
wikidata	Q70892852



↑ Ogham in 3D Project, DIAS,
CC BY-NC-SA 3.0 Ireland

CIIC 242 (Ogham Stone Concept by RAS Macalister)^{EN}

<http://lod.ogham.link/data/Y10000162>



The CIIC 242 (Ogham Stone Concept by RAS Macalister) resource is powered by Static [GeoPubby](#) generated using the [SPARQLing Unicorn QGIS Plugin](#)

Search: Go **Download Options:** Format:

Description: comment:Ogham Stone, Ireland

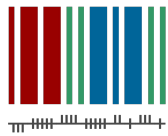
Property	Value
disclosedAt (oghamonto:disclosedAt)	O540000194 (fslid:O540000194)
exactMatch (oghamonto:exactMatch)	Q70892852 (wde:Q70892852) [x]
type (rdf:type)	<ul style="list-style-type: none">OghamStone (oghamonto:OghamStone) [x]OghamStone_CIIC (oghamonto:OghamStone_CIIC) [x]Resource (ldp:Resource) [x]Resource (Resource) [x]
comment (rdfs:comment)	Ogham Stone, Ireland (rdflangString) (iso639:en)
label (rdfs:label)	CIIC 242 (Ogham Stone Concept by RAS Macalister) (rdflangString) (iso639:en)

Metadata

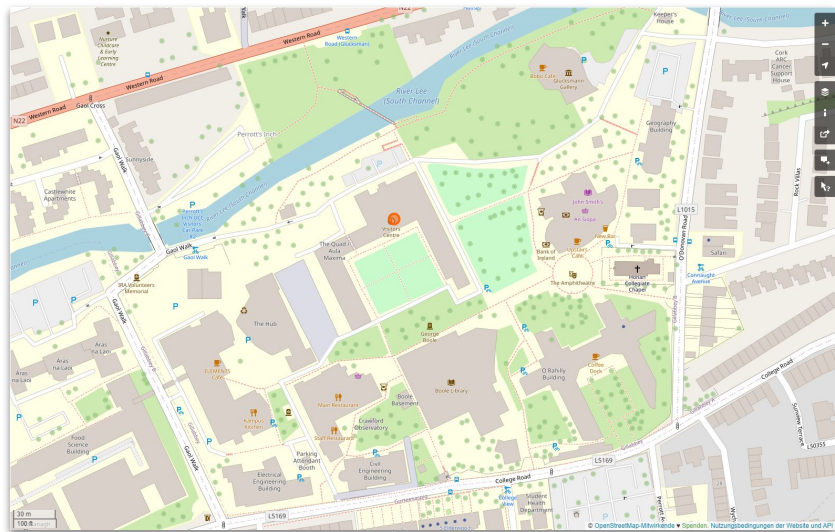
Property	Value
identifier (dce:identifier)	242 (xsd:string)
creator (terms:creator)	0000-0002-3246-3531 (0000-0002-3246-3531) [x]
license (terms:license)	deed.de (deed.de) [x]
rightsHolder (terms:rightsHolder)	<ul style="list-style-type: none">0000-0002-3246-3531 (0000-0002-3246-3531) [x]0000-0003-4696-2101 (0000-0003-4696-2101) [x]
inDataset (void:inDataset)	Linked_Open_Ogham (fslid:Linked_Open_Ogham) [2481 oghamonto:disclosedAt]
wasAttributedTo (prov:wasAttributedTo)	PythonStonesCIIC (fslid:PythonStonesCIIC)
wasDerivedFrom (prov:wasDerivedFrom)	og_stones.csv (og_stones.csv) [x]
wasGeneratedBy (prov:wasGeneratedBy)	Y10000162_activity (fslid:Y10000162_activity)

CIIC 242

CIIC 115



- UCC CORK STONE CORRIDOR: #26
- OSM: NODE/9990835587
- WIKIDATA: Q69383434



↑ Florian Thiery, CC BY-NC-SA 4.0



Knoten: CIIC 115 /
UCC 26
(9990835587)

Version #2

small fixes

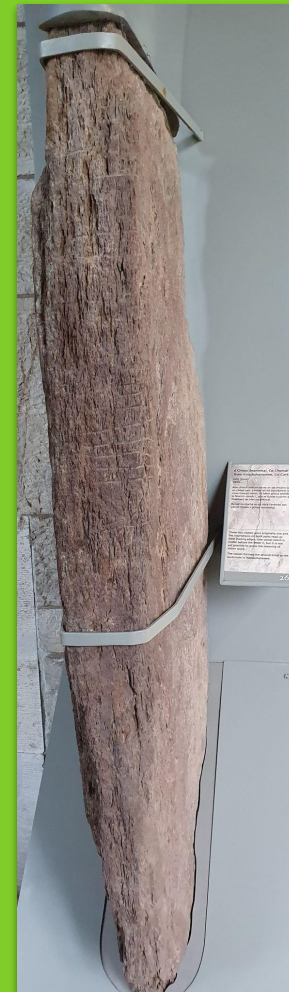
Bearbeitet vor 20 Tagen von fthiergeo

Änderungssatz #125625625

Standort: 51.8938181, -8.4920871

Tags

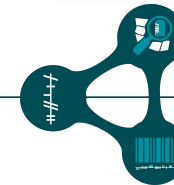
historic	ogham_stone
inscription	GRIMGGN[! MAQ!] CERC...
name	CIIC 115 / UCC 26
project	ogham.link
source	survey



↑ Florian Thiery, CC BY-NC-SA 4.0

CIIC 115 (Ogham Stone Concept by RAS Macalister)^{EN}

<http://lod.ogham.link/data/Y10000019>



The CIIC 115 (Ogham Stone Concept by RAS Macalister) resource is powered by Static [GeoPubby](#) generated using the [SPARQLing Unicorn QGIS Plugin](#)

Search: Go **Download Options:** Format:

Description: comment:Ogham Stone, Ireland

Property	Value
disclosedAt (oghamonto:disclosedAt)	OS40000173 (fslid:OS40000173)
exactMatch (oghamonto:exactMatch)	Q693834 (wde:Q693834) [x]
shows (oghamonto:shows)	OW6 (fslid:OW6)
type (rdf:type)	<ul style="list-style-type: none">OghamStone (oghamonto:OghamStone) [x]OghamStone_CIIC (oghamonto:OghamStone_CIIC) [x]Resource (rdf:Resource) [x]Resource (Resource) [x]
comment (rdfs:comment)	Ogham Stone, Ireland (rdf:langString) (iso6391:en)
label (rdfs:label)	CIIC 115 (Ogham Stone Concept by RAS Macalister) (rdf:langString) (iso6391:en)

Metadata

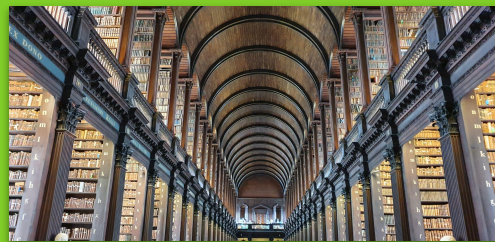
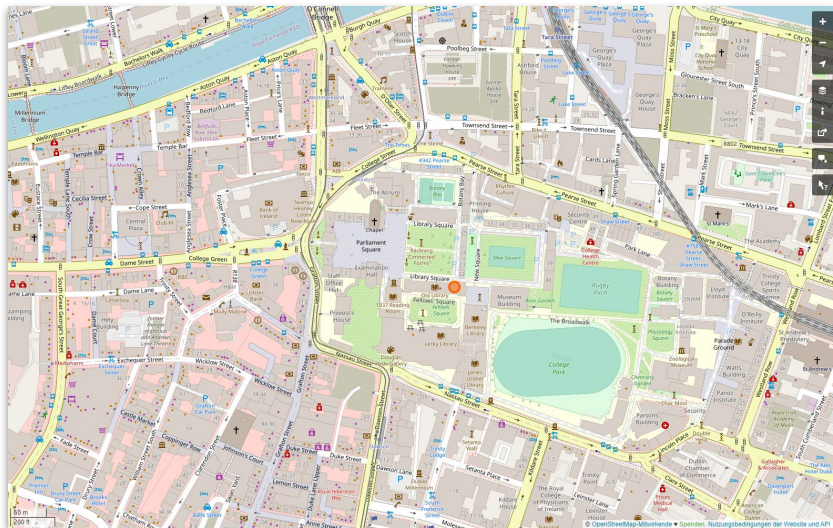
Property	Value
identifier (dce:identifier)	115 (xsd:string)
creator (terms:creator)	0000-0002-3246-3531 (0000-0002-3246-3531) [x]
license (terms:license)	deed.de (deed.de) [x]
rightsHolder (terms:rightsHolder)	<ul style="list-style-type: none">0000-0002-3246-3531 (0000-0002-3246-3531) [x]0000-0003-4696-2101 (0000-0003-4696-2101) [x]
inDataset (void:inDataset)	Linked_Open_Ogham (fslid:Linked_Open_Ogham) [1367 oghamonto:shows]
wasAttributedTo (prov:wasAttributedTo)	PythonStonesCIIC (fslid:PythonStonesCIIC)
wasDerivedFrom (prov:wasDerivedFrom)	og_stones.csv (og_stones.csv) [x]
wasGeneratedBy (prov:wasGeneratedBy)	Y10000019_activity (fslid:Y10000019_activity)

CIIC 115

CIIC 137



- TRINITY COLLEGE / BOOK OF KELLS DUBLIN: #A
- OSM: NODE/10040750611
- WIKIDATA: Q70892569



↑ Florian Thiery, CC BY-NC-SA 4.0



Knoten: CIIC 137
(10040750611)

Version #2

added more information

Bearbeitet vor 1 Minute von fthiergeo

Änderungssatz #126441441

Standort: 53.3439268, -6.2564185

Tags

historic	ogham_stone
inscription	ANM VEDLI OIGGOI MACI SEDDINI
name	CIIC 137
project	ogham.link
source	survey
wikidata	Q70892569



↑ Florian Thiery, CC BY-NC-SA 4.0

CIIC 137 (Ogham Stone Concept by RAS Macalister)^{EN}

<http://lod.ogham.link/data/Y10000043>



The **CIIC 137 (Ogham Stone Concept by RAS Macalister)** resource is powered by Static [GeoPubby](#) generated using the [SPARQLing Unicorn QGIS Plugin](#)

Search: Go **Download Options:** Format:

Description: comment:Ogham Stone, Ireland

Property	Value
disclosedAt (oghamonto:disclosedAt)	OS40000118 (fslid:OS40000118)
exactMatch (oghamonto:exactMatch)	Q70892569 (wde:Q70892569) [x]
shows (oghamonto:shows)	<ul style="list-style-type: none">OW1 (fslid:OW1)OW6 (fslid:OW6)
type (rdf:type)	<ul style="list-style-type: none">OghamStone (oghamonto:OghamStone) [x]OghamStone_CIC (oghamonto:OghamStone_CIC) [x]Resource (ldp:Resource) [x]Resource (Resource) [x]
comment (rdfs:comment)	Ogham Stone, Ireland (rdflangString) (iso6391:en)
label (rdfs:label)	CIIC 137 (Ogham Stone Concept by RAS Macalister) (rdflangString) (iso6391:en)

Metadata

Property	Value
identifier (dce:identifier)	137 (xsd:string)
creator (terms:creator)	0000-0002-3246-3531 (0000-0002-3246-3531) [x]
license (terms:license)	deed.de (deed.de) [x]
rightsHolder (terms:rightsHolder)	<ul style="list-style-type: none">0000-0002-3246-3531 (0000-0002-3246-3531) [x]0000-0003-4696-2101 (0000-0003-4696-2101) [x]
inDataset (void:inDataset)	Linked_Open_Ogham (fslid:Linked_Open_Ogham) [1367 oghamonto:shows]
wasAttributedTo (prov:wasAttributedTo)	PythonStonesCIIC (fslid:PythonStonesCIIC)
wasDerivedFrom (prov:wasDerivedFrom)	og_stones.csv (og_stones.csv) [x]
wasGeneratedBy (prov:wasGeneratedBy)	Y10000043_activity (fslid:Y10000043_activity)

CIIC 137

FINIS!

QUESTIONS?

