

Historic, Archive Document

Do not assume content reflects current scientific knowledge, policies, or practices.

62.73

LIBRARY
RECEIVED
OCT 10 1923
U. S. Department of Agriculture

Burpee's

BLUE LIST



1923
WHOLESALE PRICES
For Market Growers
and Florists

W. Atlee Burpee Co.
Wholesale Department
Seed Growers Philadelphia

Burpee's Blue List for 1923

Burpee's Blue List is intended for the exclusive use of **Market Growers and Florists** who want **THE BEST SEEDS THAT GROW**.

The prices in this catalog cover cost of bags, boxes, and all packing but **do not include cost of transportation** except on flower seeds. The purchaser pays freight or express charges upon receipt.

SEEDS BY MAIL. If seeds are ordered by mail, the cost of postage (Parcel Post rates) should be sent with the order. The Parcel Post rates are regulated according to distance, and the purchaser can readily ascertain the postage by applying to his postmaster. Parcel Post shipments will be insured if the purchaser so requests, in which case the cost of insurance should be sent with the order.

SEEDS BY FREIGHT AND EXPRESS. Where it is convenient to use Express service, we recommend it as economical, and you are assured of prompt delivery. Where very large quantities are to be forwarded, or the distance is short and time is not a factor, freight charges are, of course, lower than express. If your station is a "prepaid station," please send an amount sufficient to cover transportation charges with your order.

It is our desire to give our customers the benefit of whatever method of transportation may be most economical for them. Should you be in doubt as to the best method, we would suggest that you leave this to us, and take advantage of our wide shipping experience.

C. O. D. SHIPMENTS can be made by **express** (not by freight) when \$2.00 is remitted with the order to cover express charges and guarantee acceptance upon arrival. Small shipments may be sent by Parcel Post **C. O. D.**

Perishable goods, such as Potatoes, Onion Sets, Bulbs and Roots, **cannot be sent C. O. D.**

OUR TERMS are **Cash with the Order**, unless you are personally known to us, or in a business where we can learn your financial standing from the commercial agencies. Our prices are fixed **close to cost**, hence we must maintain our rule of "cash with the order" or **C. O. D.** by Express or Parcel Post.

YOU RUN NO RISK in sending cash with the order. Our reputation as honest and experienced seedsmen is known the world over. Our financial responsibility can be learned from any bank, trust company, or merchant who subscribes to one of the commercial Agency Reports. You may remit, **at our risk**, by post-office money-order, check, draft, or express order. Use registered letter if you send cash or stamps.

HOW TO ORDER. Please be careful to **sign your name** and **give your complete address** on every order and letter sent us. Order by catalog number or variety name—the number alone is sufficient. If you have an inquiry to make or other matters to refer to when sending an order, write the inquiry on a separate sheet of paper from your order and sign your name and address to each. Your orders will be promptly filled and your inquiries will receive careful attention.

Our Advice is to Order Early

Burpee's Annual for 1923

BURPEE'S ANNUAL is the name of our retail catalog. It gives full descriptions of the many varieties of flower and vegetable seed which we supply, and much other information of interest and value. To Market Growers and Florists, we allow a **Discount of 25%** on seeds ordered in retail packets only from **BURPEE'S ANNUAL**. Ounces and fractions of ounces, quarter pounds and pounds are charged at the prices given in this catalog and are not subject to discount.

This Catalog cancels all previous quotations.

Burpee's Seeds Grow



**Burpee
Buildings**
North Fifth
Street,
York Avenue
and
Buttonwood
Street,
Philadelphia

To Our Friends and Customers:

The Market Grower and Commercial Florist, more than any one else, realize the value of Quality in Seeds.

Planters all over the world are buying Burpee-Quality Seeds because they are assured of getting the Best Seeds That Grow. Our experience and extensive operations as seed growers have given us a unique opportunity to grow each variety of Burpee Seeds where each variety will mature most nearly to perfection.

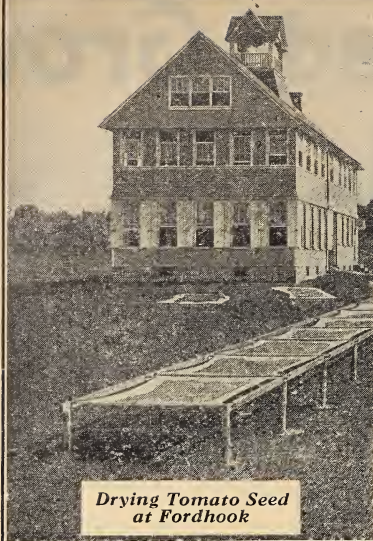
Our seed farms in Pennsylvania, New Jersey, and California are famous for the excellent strains of Vegetable and Flower Seeds they produce. The selection of stock seed is done with the utmost care by experts, and all seed sold by the House of Burpee is tested twice at Fordhook.

We are continuously aiming to produce still better seeds. This year's crop has been grown from the best of last year's, and last year's crop was grown from the best of the year before. For nearly half a century the House of Burpee has continued to select and improve the commercial varieties of vegetables and flowers as well as to create the new.

No seed house of less magnitude than Burpee's could produce all varieties of vegetable and flower seeds of such high quality. And Burpee's is the largest mail order seed house in the world.

We hope we may have the pleasure of supplying you with Burpee-Quality Seeds. We are waiting to serve you.

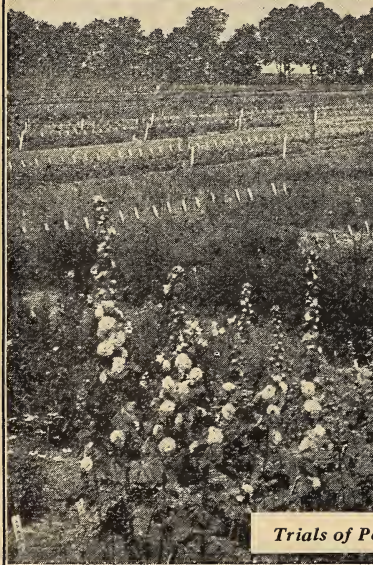
Faithfully,



*Drying Tomato Seed
at Fordhook*



*Testing Seeds in the
Greenhouse*



Trials of Perennial Flower Seeds at Fordhook

THE BURPEE GUARANTEE

We guarantee the vitality and purity of our seeds to the full amount of the purchase price.

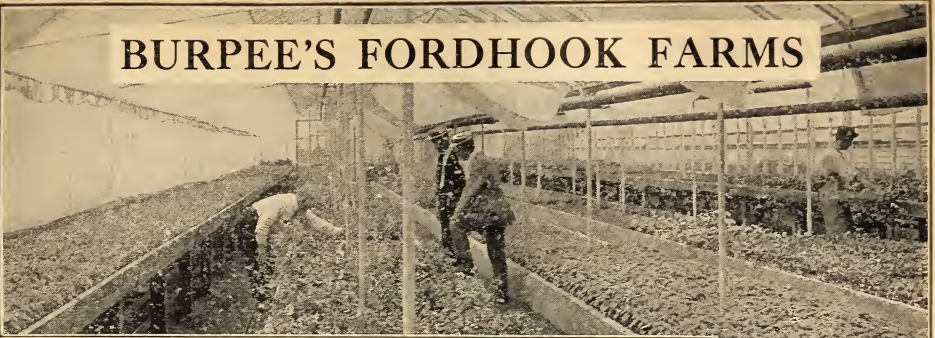
You can have your money back any time within the year if you are not satisfied with the results from Burpee's Seeds.

Even with Burpee-Quality Seeds success in gardening or farming depends largely upon cultivation, soil, and weather conditions. It is, therefore, agreed that in no case shall W. ATLEE BURPEE CO. be liable for more than the amount actually paid for the seed or bulbs.

We guarantee the safe arrival of your seeds, and we guarantee their quality to the full amount of the purchase price.

This is the guarantee that protects all who purchase seeds from Burpee of Philadelphia.

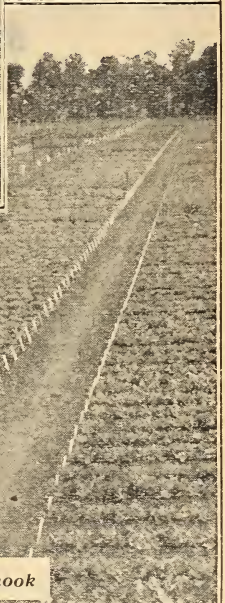
BURPEE'S FORDHOOK FARMS



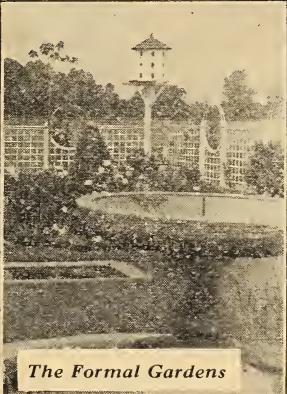
*Growing Seed
of Greenhouse
Plants*



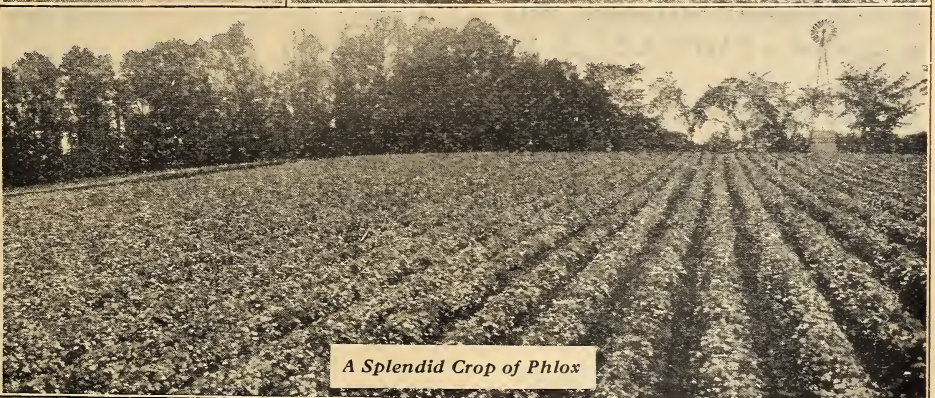
*Greenhouses and Frames
at Fordhook*



Testing Lettuce on Fordhook



The Formal Gardens



A Splendid Crop of Phlox

ARTICHOKE

	Oz.	¼ lb.	Lb.
1 Large Green Globe	\$0 95	\$2 75	—

ASPARAGUS SEED

3 Barr's Mammoth	15	40	\$1 20
6 Giant Argenteuil	15	30	1 00
8 Palmetto	15	30	1 00
9 Washington	80	2 40	8 00

ASPARAGUS ROOTS

	1000 roots	5000 roots
9902 Barr's Mammoth—one year old	\$9 75	\$45 00
9903 Barr's Mammoth—two years old	12 50	60 00
9908 Giant Argenteuil—one year old	9 75	45 00
9909 Giant Argenteuil—two years old	12 50	60 00
9912 Washington—one year old	22 00	100 00
9913 Washington—two years old	26 00	120 00
9914 Palmetto—one year old	9 75	45 00
9915 Palmetto—two years old	12 50	60 00

BUSH BEANS—NOTE.—Ten pounds or more will be supplied at 100-pound rates

	Lb.	100 lbs.
10 Burpee's STRINGLESS GREEN-POD	\$0 23	\$20 00
13 Bountiful	23	20 00
14 Extra-Early RED VALENTINE	22	19 00
15 Black Valentine	27	24 00
17 Round Yellow Six Weeks	19	16 00
19 Late Refugee, or 1000 to 1	23	20 00
20 Keeney's Stringless Green Refugee	23	20 00
21 Extra-Early Refugee	19	16 00
22 FORDHOOK FAVORITE (White Seeded)	23	20 00
23 Giant Stringless Green-Pod	23	20 00
33 Burpee's Brittle Wax	27	24 00
36 Prolific Dwarf Black Wax	19	16 00
41 Rust-Proof Golden Wax	25	22 00
44 Burpee's NEW KIDNEY WAX	23	20 00
45 Wardwell's Kidney Wax	20	17 00
48 Pencil-Pod Black Wax	20	17 00
49 SURECROP Stringless Wax	20	17 00
50 Burpee's SADDLEBACK WAX	20	17 00
51 Hodson Wax	23	20 00
54 Stringless Refugee Wax	20	17 00
55 Burpee's Stringless White Wax	29	26 00
56 Davis' White Wax	20	17 00
25 ROBUST PEA or Improved White Navy (Disease resis- tant)	20	17 00
26 Dwarf Horticultural	23	20 00
28 Red Kidney	23	20 00
29 White Marrowfat	23	20 00
30 White Navy, or Boston Pea	20	17 00

POLE BEANS

	Lb.	100 lbs.
72 Kentucky Wonder (Old Homestead)	\$0 20	\$17 00
73 Burger's Green-Pod Stringless (White Seeded)	23	20 00
74 White Creaseback	16	13 00
75 Lazy Wife's	23	20 00
78 McCASLAN	20	17 00
79 Golden Cluster Wax	25	22 00
80 Kentucky Wonder Wax	25	22 00
81 White Dutch Case Knife	20	17 00
83 Horticultural, Cranberry, or Wren's Egg	20	17 00
87 Scarlet Runner	25	22 00

LIMA BEANS

60 Burpee's Bush	25	22 00
63 Burpee-Improved Bush	27	24 00
65 FORDHOOK BUSH	27	24 00
67 Henderson's Bush	23	20 00
68 Wood's Prolific	23	20 00
70 Soy Bean Lima "Haitu"	20	17 00
95 Burpee's New SUNNYBROOK POLE LIMA	<i>Crop failed</i>	
96 Early Leviathan	27	24 00
98 Burpee's Giant-Podded Pole Lima	29	26 00
99 KING OF THE GARDEN	25	22 00
101 Challenger, or Dreer's Improved	23	20 00
103 Carolina, or Sieva	25	22 00

GARDEN BEETS, SUGAR BEETS, AND MANGELS

	Oz.	¼ lb.	Lb.	100 lbs.
107 Burpee's Extra-Early (<i>Crop short</i>)	\$0 15	\$0 30	\$0 90	\$85 00
109 Extra-Early Flat Egyptian	12	25	70	65 00
111 CROSBY'S EGYPTIAN	15	30	90	85 00
113 Edmand's Early Turnip	12	25	70	65 00
115 DETROIT DARK RED	15	30	90	85 00
117 Burpee's COLUMBIA	10	20	65	60 00
121 Burpee's Black-Red Ball	15	40	1 25	120 00
123 Early Model	10	15	45	40 00
124 ECLIPSE	12	25	75	70 00
120 Dark Stinson	10	15	45	40 00
128 Burpee's Improved Blood Turnip	15	30	1 00	95 00
131 Long Smooth Blood-Red	10	20	60	55 00
134 Burpee's New Half-Long	20	45	1 50	145 00
139 Danish Improved Sugar (Burpee)	10	20	65	60 00
141 Lane's Imperial Sugar	10	15	50	45 00
143 Wanzleben Sugar	10	20	60	55 00
145 GIANT HALF-SUGAR ROSE	10	20	60	55 00
147 Golden Tankard Mangel	12	25	70	65 00
149 Golden Giant, or Yellow Leviathan	10	15	50	45 00
151 MAMMOTH PRIZE LONG RED	10	20	65	60 00
152 Brock's Red Intermediate	10	15	50	45 00

SWISS CHARD

NOTE.—Ten pounds or more will be supplied at 100-pound rates

	Oz.	¼ lb.	Lb.	100 lbs.
136 Large-Ribbed White.....	\$0 15	\$0 30	\$1 00	\$95 00
137 Lucullus.....	12	30	90	85 00

BROCCOLI

155 St. Valentine (½ oz., 80 cts.).....	1 50	4 50	—	—
---	------	------	---	---

BRUSSELS SPROUTS

158 Long Island Improved.....	30	90	3 00	—
159 Perfection.....	20	55	1 75	—
162 Burpee's DANISH PRIZE.....	25	70	2 25	—

CABBAGE—Earliest Oblong-Headed

Our cabbage seed is Long Island or Danish Grown

NOTE.—Ten pounds or more will be supplied at 100-pound rates

165 Extra-Early Express.....	20	60	2 00	195 00
166 BURPEE'S FORDHOOK FORCING (½ oz., 65 cts.).....	1 20	3 60	12 00	—
167 Early Jersey Wakefield.....	25	75	2 50	245 00
168 Early Jersey Wakefield (Burpee's Special Stock, <i>Extra-Early</i>).....	45	1 35	4 50	440 00
169 Charleston, or Large Wakefield.....	25	75	2 50	245 00
171 Early Winnigstadt.....	20	60	2 00	195 00

CABBAGE—Early and Second-Early

176 ENKHUIZEN GLORY.....	30	90	3 00	295 00
177 Burpee's ALLHEAD EARLY.....	25	75	2 50	245 00
178 COPENHAGEN MARKET, True (<i>Danish Grown</i>).....	40	1 15	3 75	365 00
179 Early Stonehead, or Volga.....	35	1 00	3 50	345 00
180 Fordhook Mainstay-Early.....	25	75	2 50	245 00
183 Early Dwarf Flat Dutch.....	25	75	2 50	245 00
185 Early Summer.....	25	75	2 50	245 00
187 Henderson's Succession.....	30	90	3 00	295 00
188 Stein's Flat Dutch, or Acme.....	30	90	3 00	295 00
189 All Seasons.....	30	90	3 00	295 00
191 Fottler's Brunswick.....	30	90	3 00	295 00

THE BURPEE STANDARD IN SEEDS is the highest it is possible to attain to-day, and yet we aim for still further betterment. PROGRESS is our watchword! Planters throughout the world, whether gardening for pleasure or profit, soon learn that "the best is the cheapest." These three sentences convey the principal "reasons why" the Burpee-Business grows steadily year by year. Shall we have the pleasure of serving you this season, or will you wait until importuned by some traveling salesman or storekeeper to buy other seeds claimed to be "just as good as BURPEE'S"? You may get as good, but you cannot get better seeds at any price!

CABBAGE—Winter Varieties

NOTE.—Ten pounds or more will be supplied at 100-pound rates

	Oz.	¼ lb.	Lb.	100 lbs.
194 Premium Late Flat Dutch	\$0 30	\$0 90	\$3 00	\$295 00
195 Burpee's Surehead	25	75	2 50	245 00
199 Burpee's Short-Stem Drumhead	30	85	2 75	270 00
201 Burpee's Late Stonehead	45	1 35	4 50	440 00
203 DANISH BALLHEAD (<i>Grown in Denmark</i>)	25	70	2 25	220 00
205 DANISH ROUNDHEAD— Short Stem Danish Ballhead (<i>Grown in Denmark</i>)	25	75	2 50	245 00
209 Perfection Drumhead SAVOY	25	75	2 50	245 00
213 Mammoth Rock Red	25	75	2 50	245 00
215 Large Red Drumhead, or Red Dutch	25	75	2 50	245 00
216 DANISH ROUND RED	30	90	3 00	295 00

CHINESE OR CELERY CABBAGE

NOTE.—Ten pounds or more will be supplied at 100-pound rates

211 Wong Bok	25	75	2 50	245 00
212 PE-TSAI (Extra Select Stock)	25	75	2 50	245 00

GARDEN CARROTS

NOTE.—Ten pounds or more will be supplied at 100-pound rates

217 Early Golden Ball, or French Forcing	12	25	80	75 00
218 New AMSTERDAM FORCING	12	30	95	90 00
219 Short Horn, or Early SCARLET HORN	12	30	85	80 00
221 CHANTENAY, or Model	12	25	80	75 00
223 Burpee's Oxheart, or Guerande	15	35	1 00	95 00
225 Danvers Half-Long Orange	12	30	95	90 00
226 Half-Long Scarlet Nantes	12	30	85	80 00
229 Improved Long Orange	12	30	85	80 00
231 St. Valery, or New Intermediate	12	30	85	80 00

CARROTS FOR STOCK FEEDING

235 Improved Short White	10	20	65	60 00
238 Large White Belgian	10	20	65	60 00
240 Large Yellow Belgian	12	25	80	75 00

CAULIFLOWER

244 Burpee's BEST-EARLY (¼ oz., 55 cts.)	2 00	6 00	20 00	—
245 Burpee's DRY-WEATHER (¼ oz., 55 cts.)	2 00	6 00	20 00	—
246 Burpee's Fordhook (¼ oz., 80 cts.)	3 00	9 00	30 00	—
247 Early SNOWBALL (¼ oz., 50 cts.)	1 80	5 40	18 00	—
249 Extra-Early Dwarf Erfurt (¼ oz., 50 cts.)	1 80	5 40	18 00	—
253 Veitch's Autumn Giant	45	1 35	4 50	—

CELERY

	Oz.	¼ lb.	Lb.
260 Golden Self-Blanching (<i>American</i>).....	\$0 50	\$1 50	\$5 00
262 GOLDEN SELF-BLANCHING (<i>French-grown</i> <i>Seed</i>).....	1 00	3 00	10 00
266 White Plume.....	30	85	2 75
267 EASY BLANCHING.....	25	75	2 50
272 Burpee's Fordhook.....	65	2 00	6 50
274 Winter King.....	30	90	3 00
275 Winter Queen.....	25	70	2 35
278 Evans' Triumph.....	20	45	1 50
282 GIANT PASCAL.....	20	60	2 00

CELERIAC—Turnip-Rooted Celery

293 Giant Smooth Prague.....	20	60	2 00
------------------------------	----	----	------

CHICORY

295 Large-Rooted, or Coffee.....	20	60	2 00
297 WITLOOF, or French Endive.....	20	55	1 75

COLLARDS

299 Georgia, or Southern.....	12	30	80
-------------------------------	----	----	----

SWEET CORN

NOTE.—Ten pounds or more will be supplied at 100-pound rates

	Lb.	100 lbs.
301 Burpee's GOLDEN BANTAM.....	\$0 20	\$17 00
302 Burpee's Earliest Catawba.....	27	24 00
305 EARLY FORDHOOK.....	23	20 00
309 White-Cob Cory.....	18	15 00
310 HOWLING MOB (Burpee).....	20	17 00
311 Early Cosmopolitan (Burpee).....	25	22 00
313 Early Minnesota.....	16	13 00
314 Burpee's Sweet Orange.....	20	17 00
315 Crosby's Early (Twelve-Rowed).....	18	15 00
328 Kendel's Early Giant.....	18	15 00
329 De Lue's GOLDEN GIANT.....		<i>Crop failed</i>
333 Burpee's WHITE EVERGREEN.....	20	17 00
335 Stowell's Evergreen.....	18	15 00
337 COUNTRY GENTLEMAN.....	18	15 00
340 Black Mexican.....	20	17 00

EARLY MARKET CORN

345 Extra-Early Adams.....	15	12 00
----------------------------	----	-------

POP CORN

353 Queen's Golden (Burpee).....	20	17 00
355 White Rice.....	16	13 00

CORN SALAD, or FETTICUS

	Oz.	¼ lb.	Lb.	100 lbs.
351 Large Round-Leaved (Large Seed)	\$0 15	\$0 40	\$1 25	—

CRESS

364 Fine Curled (Pepper Grass)	10	20	60	\$55 00
366 True Water Cress (½ oz., 25 cts.)	45	1 35	4 50	—

CUCUMBER

NOTE.—Ten pounds or more will be supplied at 100-pound rates

369 Early Russian	12	30	95	90 00
371 EARLY GREEN CLUSTER	12	30	90	85 00
373 Early Frame, or Early Short Green	12	30	85	80 00
375 Thorburn's Everbearing	12	30	90	85 00
377 Extra-Early Green Prolific	12	30	85	80 00
379 Burpee's EXTRA-EARLY WHITE SPINE	12	30	95	90 00
381 Improved Arlington White Spine	12	30	85	80 00
383 FORDHOOK WHITE SPINE (Burpee)	12	30	95	90 00
385 Extra-Long White Spine, or Evergreen	12	30	90	85 00
393 FORDHOOK FAMOUS (Burpee)	20	45	1 25	120 00
395 Fordhook Pickling (Burpee)	12	30	90	85 00
397 Cumberland Pickling	12	30	85	80 00
399 London or IMPROVED LONG GREEN	15	40	1 10	105 00
400 Davis' Perfect	12	30	90	85 00
401 EARLY FORTUNE	12	30	95	90 00
405 Burpee's Giant Pera	20	45	1 25	120 00
406 Japanese Climbing	20	45	1 25	120 00
409 West India Gherkin	20	45	1 45	140 00
410 Burpee's White Wonder	30	90	3 00	—
413 English Frame, or Telegraph (Pkt., 25 cts.)	3 25	—	—	—

DANDELION

414 Cultivated, or French Common	60	1 80	5 95	—
415 Improved Thick-Leaved	1 00	2 95	9 75	—

EGG PLANT

420 Burpee's BLACK BEAUTY	45	1 35	4 50	—
422 New York Improved Spineless	45	1 30	4 35	—
423 Florida Highbush	40	1 20	4 00	—
428 Long Purple	35	1 00	3 50	—

ENDIVE

430 Green Curled or Giant Fringed Oyster	15	35	1 10	105 00
432 WHITE CURLED	12	30	85	80 00
436 Broad-Leaved Batavian (Escarolle)	15	40	1 25	120 00

Gourds—See Flower Seed Section.

HORSE-RADISH ROOTS

9926	Maliner-Kren, or Improved Bohemian..	\$12 50 per 1000 roots
9924	Common.....	\$11 00 per 1000 roots

		10 lbs.	100 lbs.
9900	JERUSALEM ARTICHOKE	\$2 20	\$18 00

KALE, or BORECOLE

		Oz.	¼ lb.	Lb.	100 lbs.
446	Dwarf Green Curled.....	\$0 12	\$0 25	\$0 75	\$70 00
448	Dwarf Siberian.....	12	30	85	80 00
452	Tall Green Curled Scotch.....	12	30	85	80 00

KOHL-RABI

456	Early White Vienna—(<i>Select forcing strain</i>).....	20	60	1 90	—
457	Early Purple Vienna.....	20	60	2 00	—
459	Large Green or White.....	15	40	1 25	—

LEEK

461	Broad London, or Large American Flag.	20	55	1 85	180 00
465	Long Mezieres.....	30	90	3 00	295 00

LETTUCE—Earliest and Forcing Varieties

NOTE.—Ten pounds or more will be supplied at 100-pound rates

469	Black-Seeded Tennis Ball or Salamander.....	12	30	1 00	95 00
473	Wheeler's Tom Thumb, b. s.....	15	40	1 25	120 00
474	May King, w. s.....	15	40	1 25	120 00
475	Big Boston, w. s. (<i>Extra select stock</i>).....	15	40	1 25	120 00
476	Burpee's WAYAHEAD, w. s.....	15	40	1 25	120 00
477	Unrivaled, w. s.....	12	30	1 00	95 00
479	Black-Seeded Big Boston.....	20	45	1 35	130 00
484	Mignonette, b. s.....	15	40	1 25	120 00
485	Grand Rapids, b. s.....	15	40	1 25	120 00

LETTUCE—Cutting Varieties

490	Early Curled Simpson, or Silesia, w. s...	20	45	1 35	130 00
493	Black-Seeded Simpson.....	20	45	1 35	130 00
494	The Morse, w. s. (Burpee).....	20	45	1 35	130 00
496	Burpee's TOMHANNOCK, w. s.....	20	45	1 35	130 00
497	Early Prize Head (Brown Cabbage), w. s..	20	45	1 35	130 00

LETTUCE—Butterhead Varieties

		Oz.	¼ lb.	Lb.	100 lbs.
498	Philadelphia White Cabbage, w. s.	\$0 12	\$0 30	\$1 00	\$95 00
504	THE DEACON , or San Francisco Market, w. s.	12	30	1 00	95 00
505	All Seasons , b. s.	20	45	1 35	130 00
508	California Cream-Butter , b. s.	12	30	1 00	95 00
511	Burpee's Hardhead, w. s.	15	40	1 25	120 00
514	Burpee's Butterhead , w. s.	15	40	1 25	120 00
516	Salamander, b. s.	12	30	1 00	95 00
518	Mammoth Black-Seeded Butter	12	30	1 00	95 00

LETTUCE—Crisp Head Varieties

522	HANSON (<i>Extra Fine Stock</i>), w. s.	15	40	1 25	120 00
524	New York , or Wonderful, w. s.	25	75	2 50	245 00
528	Burpee's BRITTLE-ICE , w. s.	15	35	1 15	110 00
530	Iceberg, w. s. (Burpee)	20	45	1 45	140 00

LETTUCE—Cos, or Celery Varieties

535	Express, or Eclipse, w. s.	15	40	1 25	120 00
537	DWARF WHITE-HEART , w. s.	12	30	90	85 00
539	Paris White , or Trianon (Romaine), w. s.	20	45	1 35	130 00

MARTYNIA

541	Unicorn Plant (<i>M. proboscidea</i>)	25	70	2 25	—
-----	---	----	----	------	---

MUSKMELON—Green-Fleshed Varieties

NOTE.—Ten pounds or more will be supplied at 100-pound rates

544	Burpee's NETTED GEM (<i>The Original</i> <i>Rocky Ford</i>)	15	35	1 10	105 00
546	Burpee's Matchless	35	1 00	3 50	—
550	Old-Fashioned Jenny Lind	20	45	1 35	130 00
554	Extra-Early Hackensack	15	40	1 20	115 00
555	HONEY DEW	12	30	1 00	95 00
562	Montreal Green Nutmeg (Burpee)	15	40	1 25	120 00
566	Burpee's Champion Market	15	40	1 25	120 00

MUSKMELON—Salmon-Fleshed Varieties

NOTE.—Ten pounds or more will be supplied at 100-pound rates

574	Burpee's FORDHOOK	15	40	1 25	120 00
575	EMERALD GEM (Burpee)	15	40	1 25	120 00
576	Burrell Gem	12	30	95	90 00
577	Osage, or Miller's Cream	15	35	1 10	105 00
578	Burpee's Spicy	15	40	1 25	102 00
579	Paul Rose , or Petoskey	12	30	1 00	95 00
580	POLLOCK NO. 10-25	12	30	90	85 00
585	Burpee's Golden Eagle	20	45	1 50	145 00
587	Banana	15	35	1 10	105 00

WATERMELON—Early Varieties

NOTE.—Ten pounds or more will be supplied at 100-pound rates

		Oz.	¼ lb.	Lb.	100 lbs.
588	FORDHOOK EARLY (Burpee)	\$0 12	\$0 30	\$0 95	\$90 00
590	Cole's Early	12	30	90	85 00
593	Burpee's BABY-DELIGHT	25	70	2 25	220 00

WATERMELON—Main Crop

NOTE.—Ten pounds or more will be supplied at 100-pound rates

596	Burpee's Cuban Queen	12	25	80	75 00
601	Burpee's Sugar Stick	15	40	1 20	115 00
606	Sweet Heart	10	25	70	65 00
608	Kleckley Sweets	12	30	85	80 00
611	Burpee's HALBERT HONEY	12	30	85	80 00
613	TOM WATSON	10	25	70	65 00
618	Dixie	10	25	70	65 00
620	McIVER SUGAR	10	25	70	65 00
621	Perfection	25	75	2 25	220 00
624	Striped Gypsy (Georgia Rattlesnake)	10	25	70	65 00
625	Alabama Sweet	10	25	70	65 00
628	Florida Favorite	12	30	85	80 00
633	Shaker Blue, or White-Seeded Triumph	12	30	90	85 00
634	Ice Cream, or Peerless (white seed)	12	30	85	80 00
644	Golden Sweet	12	30	85	80 00
645	Colorado Preserving Citron (green-seeded)	12	30	95	90 00

MUSHROOM SPAWN

9930	American Pure Culture (5 lbs., \$2 00) . . .	—	—	—	—
------	--	---	---	---	---

MUSTARD

NOTE.—Ten pounds or more will be supplied at 100-pound rates

647	FORDHOOK FANCY	12	30	1 00	95 00
648	Elephant Ear (Burpee)	12	30	1 00	95 00
653	Chinese	8	15	50	45 00
655	Southern Giant Curled	10	25	70	65 00

NASTURTIUM

659	Tall Mixed—for pickling	10	20	60	55 00
-----	-----------------------------------	----	----	----	-------

OKRA, or GUMBO

661	Dwarf Prolific	8	15	45	40 00
663	White Velvet	8	15	45	40 00
666	Kleckley's Favorite	10	20	60	55 00
667	Perfected Perkins' Long Pod (<i>New Jersey Grown</i>)	8	15	45	40 00

ONION SEED—American Varieties

NOTE.—Ten pounds or more will be supplied at 100-pound rates

	Oz.	¼ lb.	Lb.	100 lbs.
669 Yellow Danvers Flat.....	\$0 20	\$0 50	\$1 60	\$155 00
671 Yellow Globe Danvers.....	20	55	1 70	165 00
677 Strassburg, or Yellow Dutch.....	20	50	1 65	160 00
680 SOUTHPORT YELLOW GLOBE (Burpee's Special).....	20	60	2 00	195 00
681 Prize-Taker (<i>American Grown</i>).....	20	55	1 70	165 00
685 Extra-Early Red.....	20	55	1 70	165 00
687 Large Red Wethersfield.....	20	60	1 95	190 00
690 Southport Red Globe (Burpee's Special).....	20	60	2 00	195 00
693 Australian Brown (Burpee).....	20	50	1 55	150 00
696 Southport White Globe (Burpee's Special).....	30	90	3 00	290 00
697 White Portugal, or White Silverskin.....	25	70	2 25	220 00

ONION SEED—European Varieties

NOTE.—Ten pounds or more will be supplied at 100-pound rates

701 Earliest White Queen, or White Pearl...	25	70	2 25	220 00
707 Mammoth Silver King (Burpee).....		<i>Crop failed</i>		
711 Burpee's Gigantic Gibraltar.....		<i>Crop failed</i>		

ONION SETS

10 pounds or more at

9937 Yellow (Best Philadelphia).....	18 cts. per lb.			
9940 White (Best Philadelphia).....	18 cts. per lb.			
9938 Yellow Potato.....	18 cts. per lb.			
9942 White Multiplier.....	24 cts. per lb.			
9935 Egyptian, or Perennial Tree.....	15 cts. per lb.			

PARSLEY

	Oz.	¼ lb.	Lb.
714 Plain or Single.....	\$0 12	\$0 30	\$0 85
717 Extra Curled Dwarf, or Emerald.....	15	35	1 00
719 Dark Moss-Curled (Champion).....	12	30	90
721 Fern-Leaved.....	15	35	1 10
723 Turnip-Rooted, or Hamburg.....	15	35	1 00

PARSNIPS

725 Improved Guernsey.....	20	60	2 00
727 Long Smooth Hollow Crown.....	20	60	2 00
728 Early Short Round French.....	15	40	1 25

PEAS—Small Round Extra-Earlies

NOTE.—Ten pounds or more will be supplied at 100-pound rates

	Lb.	100 lbs.
730 Market Surprise	\$0 25	\$22 00
731 Burpee's BEST EXTRA-EARLY	20	17 00
737 Prolific Extra-Early	23	20 00
739 Alaska (<i>Extra Select Stock</i>)	20	17 00
742 Extra-Early Pilot	27	24 00

PEAS—Extra-Early Wrinkled

745 Gradus (Prosperity)	25	22 00
746 Thomas Laxton	25	22 00
749 Premium Gem	25	22 00
750 Sutton's Excelsior	23	20 00
751 American Wonder	27	24 00
753 Little Marvel	25	22 00
754 Burpee's Blue Bantam	27	24 00
755 Nott's Excelsior	27	24 00

PEAS—Second-Early and Main Crop

758 Senator, Improved	23	20 00
765 Burpee's PROFUSION	20	17 00
773 Telephone	27	24 00
783 Boston Unrivald	27	24 00
784 Quite Content	27	24 00
785 Alderman	25	22 00
786 British Wonder	23	20 00
789 Potlatch, or Improved Stratagem	23	20 00
792 Discovery	25	22 00
793 Carter's Daisy (Dwarf Telephone)	25	22 00
799 Champion of England	27	24 00
800 Dwarf Champion, or Juno	25	22 00

PEAS—Marrowfat and Sugar Varieties

807 Dwarf White Marrowfat	25	22 00
809 Black-Eye Marrowfat	25	22 00
811 Dwarf Gray Sugar (Purple Blossom)	27	24 00
815 Mammoth Melting Sugar	30	27 00

BURPEE'S ANNUAL—The Leading American Seed Catalog

BURPEE'S ANNUAL for 1923 is an interesting book of 188 pages with more than a hundred of the finest vegetables and flowers illustrated in colors. It tells the plain truth about the Best Seeds That Grow.

BURPEE'S ANNUAL is indispensable as a reference book for market growers and florists. It gives true and detailed descriptions of all the leading vegetables and flowers, with hundreds of illustrations throughout the book. Our list of planting dates and the information regarding the quantities of seed to sow are accurate and have been compiled from notes taken on our FORDHOOK FARMS in Pennsylvania. Keep your copy of BURPEE'S ANNUAL handy.



Picking Peppers for Seed on Burpee's Sunnybrook Farm

PEPPERS

	Oz.	¼ lb.	Lb.
818 Neapolitan Large Early	\$0 45	\$1 35	\$4 50
819 Chinese Giant (Burpee)	65	2 00	6 50
820 Burpee's Sweetmeat GLORY Pimiento	60	1 80	6 00
821 Ruby King (Burpee)	45	1 30	4 25
822 Sweet Upright	50	1 45	4 75
823 Bull-Nose, or Improved Large Bell	40	1 15	3 75
825 Sweet Mountain	40	1 20	4 00
826 RUBY GIANT	45	1 35	4 50
830 Burpee's Ruby Pearl	45	1 35	4 50
833 Burpee's SUNNYBROOK PEPPER	1 25	3 75	12 50
837 Extra Long Red Cayenne	40	1 20	4 00
839 Red Chili	40	1 20	4 00
843 Golden Queen	60	1 80	6 00
847 Red Cluster	40	1 15	3 75
849 Fancy Wrinkled, or Scotch Bonnet	40	1 15	3 75
853 Bird's Eye, or Creole	45	1 35	4 50
854 Coral Gem Bouquet	50	1 50	5 00
857 Tabasco (True McIlhenny Strain)	40	1 20	4 00

POTATOES

Write for prices on larger quantities

9946 Burpee's Extra-Early	} Per bushel (60 lbs.) \$2.85 Per sack (165 lbs.) \$7.00
9958 Green Mountain	
9960 Irish Cobbler	
9964 Rural New Yorker No. 2	
9975 Vermont Gold Coin (Burpee)	

PUMPKIN

NOTE.—Ten pounds or more will be supplied at 100-pound rates

	Oz.	¼ lb.	Lb.	100 lbs.
861 Small Sugar	\$0 12	\$0 30	\$0 95	\$90 00
863 Big Tom, or Improved Large Field	10	25	75	70 00
865 Large Cheese	10	25	75	70 00
867 Burpee's Golden Oblong	12	30	1 00	95 00
869 Japanese Pie	10	25	75	70 00
870 White Cushaw	15	40	1 20	115 00
872 Green-Striped Cushaw	15	40	1 20	115 00
874 Yellow or Golden Cushaw	15	40	1 25	120 00
875 Genuine Mammoth, or Jumbo	20	45	1 40	135 00
1048 Winter Luxury, or Pie Squash	15	40	1 10	105 00

RADISH—Early Turnip-Shaped

877 Burpee's Earliest Scarlet Button	12	30	85	80 00
878 Burpee's RAPID-RED	15	35	1 00	95 00
879 Burpee's Hailstone	10	25	75	70 00
880 Non Plus Ultra	10	25	75	70 00
883 Vick's SCARLET GLOBE	12	30	90	85 00
886 Crimson Giant Globe	12	30	95	90 00
893 SPARKLER (Scarlet Turnip White Tip)	12	30	90	85 00
897 Early White Turnip	12	30	85	80 00
899 Philadelphia White Box	10	20	60	55 00

RADISH—Early Olive-Shaped and Long Varieties

905 Burpee's Earliest White	30	90	3 00	290 00
907 French Breakfast	12	30	90	85 00
909 Bright Breakfast	12	30	85	80 00
913 Scarlet Olive-Shaped	12	25	80	75 00
928 Early Long Scarlet Short Top	12	25	80	75 00
930 Cincinnati Market	10	25	75	70 00
934 Half-Long Deep Scarlet	10	25	70	65 00
936 Long Cardinal (Brightest Scarlet)	10	25	70	65 00
938 WHITE ICICLE	10	20	65	60 00

RADISH—Summer Varieties

951 CHARTIERS, or Shepherd	10	25	75	70 00
953 Long White Vienna (Lady Finger)	12	30	85	80 00
954 White Delicious	10	25	75	70 00
959 White Strassburg (Hospital)	10	25	70	65 00

RADISH—Winter Varieties

963 White Chinese, or Celestial	10	20	60	55 00
967 Chinese Rose, or Scarlet China	10	20	60	55 00
971 Long Black Spanish	10	25	75	70 00
975 Round Black Spanish	12	25	80	75 00

RHUBARB, or PIE PLANT

	Oz.	¼ lb.	Lb.	100 lbs.
979 Myatt's Victoria (Seed)	\$0 20	\$0 45	\$1 45	\$140 00
9982 Rhubarb Roots . . . (\$6.00 per 100 roots)				

SALSIFY, or OYSTER PLANT

983 Sandwich Island Mammoth	20	55	1 75	—
---------------------------------------	----	----	------	---

SORREL

987 Broad-Leaved French	20	55	1 75	—
-----------------------------------	----	----	------	---

SPINACH

NOTE.—Ten pounds or more will be supplied at 100-pound rates

990 Long Season	8	15	40	35 00
991 VICTORIA (Burpee)	8	15	40	35 00
993 Thick-Leaved Round	8	15	40	35 00
995 Long Standing (Enkhuizen)	8	15	40	35 00
997 King of Denmark	10	20	60	55 00
999 Norfolk Savoy-Leaved (Bloomsdale) . .	8	15	37	32 00
1001 Prickly, or Winter	8	15	50	45 00
1005 New Zealand	10	25	70	65 00

SQUASH—Summer Varieties

NOTE.—Ten pounds or more will be supplied at 100-pound rates

1010 Early White Bush, Scalloped	15	35	1 15	110 00
1012 Mammoth White Bush	15	35	1 15	110 00
1014 Early Yellow Bush, Scalloped	12	30	90	85 00
1018 Golden Summer Crookneck	15	35	1 00	95 00
1020 Giant Crookneck	15	35	1 15	110 00
1030 Cocozelle Bush	15	40	1 20	115 00
1031 Long White Vegetable Marrow	20	40	1 30	125 00

SQUASH—For Summer and Winter Use

1032 FORDHOOK (Burpee)	15	40	1 25	120 00
1034 Bush Fordhook (Burpee)	15	40	1 25	120 00

SQUASH—Winter Varieties

NOTE.—Ten pounds or more will be supplied at 100-pound rates

1035 Banana	15	40	1 20	115 00
1036 BOSTON MARROW	12	30	1 00	95 00
1038 True Hubbard	15	35	1 15	110 00
1040 Chicago Warty Hubbard	15	40	1 25	120 00
1042 Red, or GOLDEN HUBBARD	12	30	1 00	95 00
1048 Livingston's Pie (Winter Luxury Pump- kin)	15	35	1 10	105 00
1052 The Delicious	15	40	1 25	120 00
1058 Mammoth Whale	20	45	1 40	135 00

TOMATO—Large Red-Fruited Varieties

		Oz.	¼ lb.	Lb.
1074	STONE.....	\$0 30	\$0 90	\$3 00
1076	Livingston's Perfection.....	30	90	3 00
1093	Dwarf Stone.....	35	1 00	3 50
1097	Burpee's SUNNYBROOK EARLIANA.....	50	1 50	5 00
1100	EARLIANA.....	35	1 00	3 50
1101	CHALK'S EARLY JEWEL (<i>Grown at Fordhook</i>).....	35	1 00	3 50
1105	Success.....	40	1 15	3 75
1108	Burpee's MATCHLESS (<i>Fordhook-Grown Seed</i>).....	40	1 15	3 75
1120	Bonny Best.....	35	1 00	3 50

TOMATO—Forcing Varieties

1068	Gulf State Market.....	40	1 15	3 75
1080	Market King.....	30	85	2 75
1104	Early Detroit.....	35	1 00	3 50
1122	Liberty Improved.....	35	1 00	3 50
1133	Comet.....	40	1 15	3 75
1134	Burpee's Whole-Salad.....	50	1 50	5 00

TOMATO—Purple-Fruited Varieties

1066	Acme.....	30	90	3 00
1067	Livingston's GLOBE.....	35	1 00	3 50
1082	Turner Hybrid, or Mikado (Burpee).....	25	75	2 50
1094	Dwarf Champion.....	30	85	2 75
1095	Burpee's DWARF GIANT.....	70	2 10	7 00
1102	FORDHOOK FIRST.....	35	1 00	3 50
1107	June Pink.....	35	1 00	3 20
1112	TRUCKER'S FAVORITE (<i>Grown at Fordhook</i>).....	35	1 00	3 25
1114	Ponderosa (<i>Grown at Fordhook</i>).....	60	1 80	6 00

TOMATO—Large Yellow Varieties

1136	Golden Queen (Sunrise).....	45	1 35	4 50
1138	Golden Dwarf Champion (Burpee).....	65	2 00	6 50

TOMATO—Small-Fruited Varieties

1137	Yellow Plum.....	40	1 20	4 00
1139	Yellow Pear-Shaped.....	45	1 35	4 50
1141	The Peach.....	30	90	3 00
1143	Burbank Preserving (Burpee).....	40	1 20	4 00
1145	Yellow Cherry.....	35	1 00	3 50
1147	Red Cherry.....	40	1 20	4 00
1149	Red Pear-Shaped.....	45	1 35	4 50
1151	Strawberry, Winter Cherry, or Husk.....	45	1 35	4 50

TURNIPS

		Oz.	¼ lb.	Lb.	100 lbs.
1155	Early White Flat Dutch, Strap-Leaved	\$0 10	\$0 25	\$0 70	\$65 00
1157	EARLY RED, or PURPLE-TOP, Strap-Leaved	10	25	70	65 00
1159	Extra-Early White Milan	15	40	1 20	115 00
1161	Extra-Early Purple-Top Milan	15	40	1 20	115 00
1163	Red, or PURPLE-TOP WHITE GLOBE	10	25	75	70 00
1167	Large White Globe, Strap-Leaved	10	25	70	65 00
1169	WHITE EGG	10	25	75	70 00
1173	Cowhorn, or Long White	10	20	65	60 00
1177	Seven-Top	10	20	60	55 00
1179	Large Yellow, or AMBER GLOBE	10	20	65	60 00
1183	Golden Ball, or Orange Jelly	10	25	75	70 00
1185	Petrowski	12	25	80	75 00

RUTABAGA, or SWEDE

1191	Improved American PURPLE-TOP YELLOW	10	25	70	65 00
1192	Bangholm	10	20	55	50 00
1194	Golden Neckless (Burpee)	10	20	55	50 00
1196	White-Fleshed Neckless	10	20	65	60 00
1197	Large White	10	20	60	55 00

HERBS

		Oz.	¼ lb.	Lb.
1304	Anise (<i>Pimpinella anisum</i>)	\$0 20	\$0 45	\$1 50
1306	Balm (<i>Melissa officinalis</i>)	45	1 35	4 50
1307	Basil, Sweet (<i>Ocimum basilicum</i>)	30	90	3 00
1309	Bene (<i>Sesamum orientale</i>)	25	70	2 25
1311	Borage (<i>Borago officinalis</i>)	20	45	1 50
1313	Caraway (<i>Carum carvi</i>)	15	40	1 25
1315	Catnip, or Catmint (<i>Nepeta cataria</i>)	40	1 20	4 00
1317	Coriander (<i>Coriandrum sativum</i>)	45	1 35	4 50
1319	Dill (<i>Anethum graveolens</i>)	12	30	1 00
1321	Fennel, Sweet (<i>Anethum fœniculum</i>)	20	55	1 75
1322	Florence Fennel (<i>Fœniculum dulce</i>)	25	70	2 25
1323	Horehound (<i>Marrubium vulgare</i>)	30	90	3 00
1325	Lavender, Ordinary (<i>Lavandula spica</i>)	40	1 20	4 00
1326	Lavender, True	45	1 35	4 50
1327	Marjoram, Sweet (<i>Origanum majoram</i>)	35	1 00	3 50
1329	Rosemary (<i>Rosmarinus officinalis</i>)	75	2 25	7 50
1331	Rue (<i>Ruta graveolens</i>)	50	1 50	5 00
1333	Sage	45	1 35	4 50
1335	Savory, Summer (<i>Satureia hortensis</i>)	45	1 35	4 50
1337	Savory, Winter (<i>Satureia montana</i>)	60	1 80	6 00
1338	Tansy (<i>Tanacetum vulgare</i>)	50	1 50	5 00
1341	Thyme (<i>Thymus vulgaris</i>)	50	1 50	5 00
1343	Wormwood (<i>Artemisia absinthium</i>)	40	1 15	3 75

FARM SEEDS

NOTE.—Prices on field seeds fluctuate with the market. Write us stating quantities required and we will quote best prices by return mail. *We handle only one grade of field seeds—the best.*

SPRING GRAINS

6055	Oats, Swedish Select.....	} Write for Prices
6060	Oats, White Tartar King.....	
6087	Wheat, Marquis Spring.....	

FIELD CORN

NOTE.—Ten pounds or more will be supplied at 100-pound rates

		100 lbs.
6020	Early Canada Yellow Flint.....	\$8 00
6022	Chester County Mammoth.....	8 00
6023	Cloud's Yellow Dent	7 00
6025	Luce's Favorite.....	7 00
6026	Burpee's Golden Beauty	9 00
6028	Hickory King.....	7 00
6029	Johnson County White	8 00
6030	New SUSSEX WHITE	9 00
6032	Improved LEAMING	8 00
6039	Eureka White Ensilage	8 00
6042	Hundred Day Bristol (Improved White Cap Dent).....	9 00
6045	Sugar Corn for Green Fodder.....	9 00

CLOVER SEED

6100	Alfalfa (Kansas Grown).....	} Write for Prices
6100a	Hardy Alfalfa (Grimm Type—Montana Grown).....	
6101	Alsike.....	
6103	White Blossom Sweet, or Bokhara.....	
6105	Crimson, or Italian.....	
6107	Mammoth Red, or Pea Vine.....	
6109	Red Medium.....	
6112	Hubam	
6113	Creeping White Dutch.....	

GRASS SEED

6114	Bermuda.....	} Write for Prices
6119	English, or Perennial Rye.....	
6121	Hard Fescue.....	
6125	Italian Rye.....	
6126	Canada Blue.....	
6127	Kentucky Blue, or June Grass.....	
6129	Meadow Fescue, or English Blue.....	
6131	Orchard.....	
6133	Fancy Red Top, or Herd's Grass.....	
6137	Sheep's Fescue.....	
6138	Sudan Grass.....	
6139	Timothy.....	

BURPEE'S SPECIAL GRASS MIXTURES

	Per lb. in 10-lb. lots or more
6145 Fordhook Finest Lawn	\$0 38
6146 Sunny South Lawn	32
6149 Shady Nook Lawn	45
6144 Terrace Sod	46
6147 Golf Links	47
6143 Permanent Pasture	32
6148 Meadow or Hay Field	27
6150 Lowland Meadow	28

TOBACCO

	Oz.	¼ lb.	Lb.
1345 Connecticut Seed Leaf	\$0 50	\$1 50	\$5 00
1347 Lancaster County Broad Leaf	45	1 35	4 50
1349 Havana	60	1 80	6 00
1351 Bonanza	45	1 35	4 50
1353 General Grant	50	1 50	5 00
1355 Sterling	45	1 35	4 50
1357 White Burley, Improved	50	1 50	5 00
1359 Long Leaf Gooch	50	1 45	4 75
1361 Improved Yellow Oronoko	50	1 50	5 00
1363 Sweet Oronoko	50	1 50	5 00

MISCELLANEOUS FARM SEEDS

6005 Broom Corn, Improved Evergreen
6007 Buckwheat, Japanese
6008 Buckwheat, Silver Hull
6010 Peas, Canada Field
6013 Chufas, or Earth Almonds
6016 Cow Peas, New Era
6017 Cow Peas, Whip-poor-will
6047 Kaffir Corn
6049 Millet, Golden
6050 Millet, Hungarian
6051 Millet, Japanese
6052 Millet, Pearl
6062 Peanuts, Mammoth Bush
6064 Peanuts, White Spanish
6066 Rape, Dwarf Essex
6069 Soy Beans, Mammoth Yellow
6071 Soy Beans, Black Wilson
6073 Sorghum or Sugar Cane, Early Orange
6075 Sunflower, Mammoth
6077 Teosinte
6079 Vetch, Spring
6080 Vetch, Winter or Hairy

} Write for
prices

Burpee's Sweet Peas

Early or Winter Flowering Varieties

Burpee's Early or Winter Flowering Sweet Peas are now universally grown by all florists who raise Sweet Peas for the large markets where only the very finest flowers are in demand. All the Burpee varieties are invaluable for greenhouse culture, blooming to perfection when grown indoors. Sown early in September they come into flower by Christmas and may be had all winter long from succession plantings. This very same type of Sweet Peas has proven valuable for our southern states and for outdoor growing where early flowers are an important factor.

For the year of 1923 we have a number of outstanding novelties to add to the already very comprehensive list of Burpee varieties in the Early- or Winter-Flowering type of Spencer Sweet Peas. These novelties are described at length on page 24. In the list below we have given only a brief line of description to each sort, for our space in this catalog is limited. Full descriptions are given on pages 108 and 109 of BURPEE'S ANNUAL for 1923.

Practically every desirable shade and color is represented in the Burpee list of Winter Flowering Spencers. The seed we offer has all been grown on our Floradale Farms.

	Oz.	¼ lb.	Lb.
<u>WHITE</u>			
3392 Snowstorm Improved (Burpee) Flowers immense in size. The finest early-flowering white. (½ oz., 45 cts.)	\$0 80	\$2 40	\$8 00
3390 Early Sankey (Burpee) Black-seeded.	60	1 80	6 00
3391 White Star (Burpee) The finest black-seeded white early flowering Sweet Pea. See page 24. (½ oz., 95 cts.)	1 80	5 40	18 00
<u>CREAM</u>			
3342 Canary Bird (Burpee) Rich cream or primrose self	50	1 50	5 00
3384 Primrose Beauty (Burpee) Deep primrose, flushed with rose	50	1 50	5 00
3375a Lemon Beauty (Burpee) Soft primrose, the standard and wings being tinted amber. (½ oz., 55 cts.)	1 00	3 00	10 00
<u>LIGHT PINK</u>			
3382 Peach Blossom (Burpee) Pale amaranth-pink, which deepens around the edges of standard and wings. (½ oz., 55 cts.)	1 00	3 00	10 00
3376 Loveliness (Burpee) White suffused pink; picoteed rose-pink	60	1 80	6 00
3395 Sweet Briar (Burpee) Light pink with a soft salmon suffusion	60	1 80	6 00
<u>CREAM-PINK</u>			
3348 Daybreak (Burpee) Rose-pink on cream; of largest size	60	1 80	6 00
3386 Rising Sun (Burpee) An attractive rose-pink on cream; keel light lemon colored	50	1 50	5 00
3394 Sunburst Improved (Burpee) Rich pink, suffused salmon; lighter at base. See page 24. (½ oz., 55 cts.)	1 00	3 00	10 00
<u>DEEP PINK</u>			
3383 Pink Beauty (Burpee) Rose-pink on white ground	50	1 50	5 00
3351 Enchantress (Burpee) Bright rose-pink; deeper at edges	60	1 80	6 00
3389 Rose Queen This is a very fine deep pink variety	60	1 80	6 00
3343 Cheerful (Burpee) A soft, cheerful shade of Begonia-pink. Standard well waved; wings frilled. See page 24. (½ oz., \$2.55)	5 00	15 00	50 00
3337 Zvolanek's Rose Large deep pink blooms. (½ oz., 45 cts.)	80	2 40	8 00
<u>ROSE</u>			
3387 Rosebud (Burpee) Bright shining rose with a suspicion of bronzy suffusion throughout the standard	50	1 50	5 00
3362 Fordhook Rose, Improved (Burpee) Rosy carmine	50	1 50	5 00
3393 Splendor (Burpee) Rich rose-crimson with a white blotch at base of standard and wings	50	1 50	5 00

<u>SALMON</u>		Oz.	¼ lb.	Lb.
3334	Apricot (Burpee) Deep salmon self, suffused orange. Flowers small but beautiful. (½ oz., 45 cts.)	80	2 40	8 00
3369	Mrs. Kerr (Burpee) A pleasing shade of rich salmon, overlaid with a soft tinge of orange. See page 24. (½ oz., 95 cts.)	1 80	5 40	18 00
<u>ORANGE</u>				
3336	Burpee's Orange A glistening orange Sweet Pea with no trace of pink or orange-pink. See page 24. (½ oz., \$2.55)	5 00	15 00	50 00
3360	Flamingo (Burpee) Standard light orange with a suffusion of salmon; wings a delicate orange-pink. (½ oz., 55 cts.)	1 00	3 00	10 00
3381	Orange Beauty (Burpee) Glowing orange-scarlet. (½ oz., 50 cts.)	90	2 70	9 00
3349	Dazzler (Burpee) Standard orange; wings tinted rosy salmon	50	1 50	5 00
<u>ORANGE-SCARLET</u>				
3366	Glitters (Burpee) Unique and outstanding bright fiery orange; wings deep orange. (½ oz., 55 cts.)	1 00	3 00	10 00
<u>CERISE</u>				
3370	Gorgeous (Burpee) Soft salmon-cerise self	60	1 80	6 00
3344	Cherry Ripe (Burpee) Glowing cherry or salmon-cerise self	60	1 80	6 00
3373	Illumination (Burpee) Vivid salmon-cerise. (½ oz., 45 cts.)	80	2 40	8 00
3359	Fire King (Burpee) Scorching fire-red. (½ oz., 40 cts.)	70	2 10	7 00
<u>CRIMSON</u>				
3374	Early King (Burpee) The finest crimson; of large size	60	1 80	6 00
<u>LAVENDER</u>				
3375	Lavender King (Burpee) Rich, true deep lavender	60	1 80	6 00
3385	Princess (Burpee) Soft lavender, suffused mauve. (½ oz., 40 cts.)	70	2 10	7 00
3399	Zephyr (Burpee) Pale, silvery lavender-blue	50	1 50	5 00
<u>BLUE</u>				
3338	Blue Bird (Burpee) A charming shade of blue	60	1 80	6 00
3396	True Blue (Burpee) True, light violet-blue. (½ oz., 45 cts.)	80	2 40	8 00
3341	Mrs. Warren G. Harding (Burpee) A very fine silvery blue—"The Harding Blue." See page 24. (½ oz., \$1.30)	2 50	7 50	25 00
<u>DARK BLUE</u>				
3340	Blue Jacket (Burpee) Rich, dark navy-blue. (½ oz., 45 cts.)	80	2 40	8 00
<u>MAUVE and PURPLE</u>				
3380	Mauve Beauty (Burpee) Rosy mauve; of immense size	60	1 80	6 00
3367	Glorious (Burpee) A charming shade of warm rosy purple	50	1 50	5 00
<u>MAROON</u>				
3377	Maroon Prince (Burpee) Deep rich glowing reddish maroon	60	1 80	6 00
<u>ART SHADES</u>				
3356	Fairy Queen (Burpee) Blush-pink, with pale salmon suffusion, having darker veinings of rose	60	1 80	6 00
<u>PICOTEE</u>				
3346	Daintiness (Burpee) Pure white, edged rose	60	1 80	6 00
3352	Exquisite (Burpee) Soft primrose, picoteed deep rose-pink	50	1 50	5 00
<u>BICOLOR</u>				
3353	Fairy (Burpee) Cream standard, suffused pinkish apricot	60	1 80	6 00
3361	Fordhook Pink and White (Burpee) Blanche Ferry color	50	1 50	5 00
3358	Favorite (Burpee) Rosy pink standard; blush wings	50	1 50	5 00
3398	Yarrowa Bright rose-pink with a clear creamy base	50	1 50	5 00
3347	Columbia Standard rich rose-pink; wings a fine delicate creamy rose. (½ oz., 45 cts.)	80	2 40	8 00
<u>STRIPED</u>				
3345	Columbine (Burpee) White, striped and flaked rose	50	1 50	5 00
3357	Fantasy (Burpee) Striped rose-pink on creamy white	50	1 50	5 00
3372	Harlequin (Burpee) Heliotrope, striped claret and chocolate	60	1 80	6 00
3335	Aurora Cream-white, flaked orange-salmon. (½ oz., 45 cts.)	80	2 40	8 00
<u>MIXED</u>				
3400	Sunrise Mixture All colors carefully blended	40	1 20	4 00
3401	Special Mixture of Light Shades	45	1 35	4 50

Burpee Novelties

Early Flowering Sweet Peas for 1923

3336 Burpee's Orange

A Glistening Orange Sweet Pea

Introduced by Burpee in 1923. BURPEE'S ORANGE is in every way distinct from all other so-called orange varieties. There is no trace of pink or orange-pink in either standard or wings. It is a true glowing orange self, practically the shade of a bright ripe orange fruit. The rich glistening color compels attention in any light, but under artificial light it is indeed outstanding.

BURPEE'S ORANGE has been proclaimed by experts and the press alike as being the greatest advance of many years in this type of Sweet Pea. It has been awarded a Certificate of Merit at The International Flower Show, New York, March, 1921. Pkt. (15 seeds) 25 cts.; ½ oz. \$2.55; oz. \$5.00; ¼ lb. \$15.00; lb. \$50.00, postpaid.

3343 Cheerful

(BURPEE, 1923) This fine novelty is an entirely new shade among the Early or Winter Flowering Sweet Peas. It is most appropriately named, the color being a soft, "cheerful" shade of Begonia-pink. Few varieties make such an imposing bunch as this fine novelty. The flowers combine immense size with good form. The standard is broad and well waved. The wings are also much frilled and in size of the right proportion to the magnificent spreading standard.

Cheerful

A "cheerful" shade of bright rich pink

Awarded Certificate of Merit at The International Flower Show, New York, March, 1921

Pkt. (15 seeds) 25 cts.; ½ oz. \$2.55; oz. \$5.00; ¼ lb. \$15.00; lb. \$50.00, postpaid.

3394 Sunburst Improved

(BURPEE, 1923) A tall-growing Sunburst has long been wanted and is now supplied in our new SUNBURST IMPROVED. The color is a pleasing and attractive shade of rich salmon-pink, intensified toward the outer portion of the standard and wings, which are overlaid with a suffusion of amber and salmon. The flowers are borne on long stout stems and the habit of the plant is vigorous, beginning to bloom early and continuing for a long time. A variety of rare beauty. Pkt. 20 cts.; ½ oz. 55 cts.; oz. \$1.00; ¼ lb. \$3.00; lb. \$10.00, postpaid.

3341 Mrs. Warren G. Harding

(BURPEE, 1922) MRS. WARREN G. HARDING is a deep shade of silvery blue—the color that is already so well known as the "Harding Blue." The color is pure throughout with no suspicion of mauve or rose. The flowers are immense in size, with a broad and much frilled standard. The wings are also well waved and a large number of the flowers are duplex or double, which lends weight, size, and beauty to the bunch. It is a vigorous grower, with deep green foliage. Awarded Certificate of Merit at The International Flower Show, March, 1921. Pkt. 25 cts.; ½ oz. \$1.30; oz. \$2.50; ¼ lb. \$7.50; lb. \$25.00, postpaid.

3369 Mrs. Kerr

(BURPEE, 1922) *The Best Early Flowering Salmon.* This magnificent novelty has been hailed by experts as being the finest Sweet Pea in its class. In addition to its unique and dainty color, the plant is of most vigorous habit and extremely free-flowering. The flowers are of immense size and exquisite shape. They are a pleasing shade of rich salmon overlaid with a soft tinge of orange. Awarded Certificate of Merit at The International Flower Show in New York, 1920. Pkt. 25 cts.; ½ oz. 95 cts.; oz. \$1.80; ¼ lb. \$5.40; lb. \$18.00, postpaid.

3391 White Star

(BURPEE, 1922) WHITE STAR is a first-class black-seeded white Sweet Pea, lacking any suspicion of pink or other coloring. The flowers are of enormous size, freely produced in fours, all beautifully waved and well placed on long and strong stems. The plants are robust and bloom freely. Awarded Certificate of Merit at The International Flower Show, New York, March, 1921. Pkt. 25 cts.; ½ oz. 95 cts.; oz. \$1.80; ¼ lb. \$5.40; lb. \$18.00, postpaid.

New Burpee Sweet Peas

Summer Flowering Varieties for 1923

3497 Burpee's Lilac-Pink

BURPEE'S LILAC-PINK has given us a distinct and entirely new shade in Sweet Peas; in fact, a blending of colors that is difficult to describe. In this exquisite novelty we find a charming combination of salmon, amber, and pale lilac-pink, on cream ground. In the standard the delicate lilac color is heavily suffused with salmon-pink. Wings are slightly deeper in tone, while the underlying creamy primrose ground gives a particularly pleasing and lovely color harmony.

The name LILAC-PINK describes the impression one receives when a few flowers are bunched together. A sturdy, strong grower, with very large flowers produced freely, four on a stem. Outstanding and distinct in every way, it is perfectly true and fixed to type and color. Sure to become very popular. Pkt. (12 seeds) 25 cts.; 5 pkts. for \$1.00, postpaid.

3465 Fordhook Orange

FORDHOOK ORANGE is a decided advance in its color, and, unlike other orange and salmon varieties, it withstands sunshine much better than all others of similar shades, though, when grown primarily for exhibition purposes, we recommend that a certain amount of shading be given just previous to the show. FORDHOOK ORANGE is a glorious shade of deep rich salmon, heavily suffused with bright orange. It is a wonderful and entirely new shade.

FORDHOOK ORANGE is unsurpassed not only in color, but also eclipses all other orange-colored varieties with its strong and sturdy growth. FORDHOOK ORANGE has been given unstinted praise by all who have seen it in our fields and trial-grounds. It should prove to be one of the "best twelve" varieties now in commerce. We anticipate FORDHOOK ORANGE will meet with a hearty reception—it is of such outstanding merit. Pkt. (12 seeds) 25 cts.; 5 pkts. for \$1.00, postpaid.

3481 Burpee's Honor Bright

We consider this grand novelty to be the best of all the cream-pink Sweet Peas. It is perfectly true and fixed to type and color, and will be of great value either for exhibition or cutting purposes.

BURPEE'S HONOR BRIGHT has flowers which are really immense in size, and it is a particularly strong grower, though it does not run to coarseness. The flowers, invariably borne in fours, are a rich, glowing, deep rose-pink on cream ground. The standard is softly suffused with salmon, while the wings are a delightful shade of pinkish rose on salmon. There is a distinct blotch of buff-primrose at the base of both standard and wings.

The large blooms are well placed on their long stems, and are most beautifully waved or crimped. Pkt. (20 seeds) 25 cts.; 5 pkts. for \$1.00, postpaid.



BURPEE'S
HONOR BRIGHT

Standard or Summer Flowering Spencer Sweet Peas

We offer re-selected stocks—grown at Floradale. Our list of varieties is complete and includes all the latest and most improved varieties. Sweet Peas are a Burpee specialty and we are growing yearly many thousand pounds of seed on our Floradale Farms. The crops of some varieties turned out very short last year and we, therefore, advise you to put your order in just as soon as possible to avoid disappointment. We will fill orders as long as our stocks last.

Full descriptions are given in BURPEE'S ANNUAL for 1923, pages 111 to 118.

WHITE

	Oz.	¼ lb.	Lb.
3490 King White The finest white-seeded white Sweet Pea.	\$0 25	\$0 75	\$2 50
3475 Burpee's Giant White The finest of all black-seeded Sweet Peas. (½ oz., 65 cts.)	1 20	3 60	12 00
3435 Constance Hinton Black-seeded.	25	75	2 50
3449a Edna May Improved Large and well-waved flowers. (½ oz., 55 cts.)	1 00	3 00	10 00
3573a Snowdrift Of recent introduction	70	2 10	7 00
3590 White Spencer An old standard.	25	75	2 50

CREAM

3456 Floradale Fairy Rich deep cream; duplex.	25	75	2 50
3554 Queen Victoria Deep primrose, flushed rose.	25	75	2 50
3474 Hawmark Cream A new variety with large flowers.	70	2 10	7 00
3545a Primrose Light creamy yellow	25	75	2 50
3487 Isobel Malcolm A fine light cream self.	25	75	2 50

BLUSH

3449 Elegance Blush-pink of largest size	40	1 20	4 00
3497 Burpee's Lilac-Pink A beautiful new blush shade. Fully described on page 25. Pkt. (12 seeds) 25 cts.	—	—	—
3583 Valentine Light shell-pink, beautifully waved and very large. . .	35	1 00	3 50
3434a Constance Acomb Large well-waved flowers of a fine blush shade.	25	75	2 50

PICOTEE

3440 Dainty Pure white flowers, edged rich rose-pink.	25	75	2 50
3433 Cherub Rich cream edged with white. Very beautiful.	25	75	2 50
3526 Mrs. J. T. Wakefield Cream ground, edged deep pink.	25	75	2 50
3530 Mrs. Townsend White with a fine edge of delicate blue.	25	75	2 50
3408 Annie Ireland Pure white with a distinct edge of terra-cotta- pink.	25	75	2 50
3491a Jean Ireland Cream with an edge of attractive rose	25	75	2 50
3517 Mrs. A. G. Gentle Large flowers; white, edged scarlet.	25	75	2 50
3527 Mrs. J. Balmer Cream, suffused reddish pink.	25	75	2 50
3536 Myrtle Rich cream with a bright border of violet-rose.	70	2 10	7 00

LIGHT PINK

3439 Daisybud An improved Elfrida Pearson.	35	1 00	3 50
3549 Pink Pearl A pleasing novelty of a clear pearl-pink.	50	1 50	5 00
3450 Elfrida Pearson Deep blush-pink.	25	75	2 50
3437 Conquest Large flowers heavily suffused with salmon-pink on white ground. (½ oz., 95 cts.)	1 80	5 40	18 00
3404 Agricola An attractive and free-flowering light pink.	25	75	2 50
3432 Cis Wright Large light pink flowers with a salmon tint.	25	75	2 50
3473 Giant Attraction Large shell-pink flowers. (½ oz., 80 cts.) . . .	1 50	4 50	15 00

CREAM-PINK

3426 Bridesmaid Rich salmon-pink on ivory-cream ground.	60	1 80	6 00
3481 Burpee's Honor Bright Deep rose-pink on cream ground. Fully described on page 25. Pkt. (20 seeds) 25 cts.	—	—	—
3498 Margaret Atlee Deep pink on cream, suffused salmon.	25	75	2 50
3499 Improved Margaret Atlee A richer shade than the above.	60	1 80	6 00
3428 Caress Lovely soft pink on cream ground.	60	1 80	6 00
3421 Beryl Rich yet soft salmon-pink shaded buff.	25	75	2 50
3516 Mrs. A. Hitchcock Pink, flushed salmon on cream ground.	30	90	3 00
3548 Picture Bright pink on a rich cream ground.	50	1 50	5 00
3495 Lilian An attractive free-blooming pink.	25	75	2 50
3528 Mrs. Routzahn Buff, suffused delicate pink.	25	75	2 50

DEEP PINK

	Oz.	¼ lb.	Lb.
3492 _a La France A rich deep pink of extra large size	\$0 40	\$1 20	\$4 00
3478 Hebe A rich clear pink self	45	1 35	4 50
3484 Hercules This is a well-known standard pink	25	75	2 50
3477 Hawlmak Pink Deep salmon-pink; rose-pink wings	35	1 00	3 50
3407 Annie Bownass Light pink, suffused salmon on white ground	25	75	2 50
3503 Hawlmak Salmon-Pink A beautiful new rich deep pink. (½ oz., 65 cts.)	1 20	3 60	12 00
3438 Countess Spencer A well-known standard sort in this class	25	75	2 50

ROSE

3472 George Herbert Bright rose with a carmine cast	25	75	2 50
3567 Rosabelle Large rose self with a white blotch at the base	25	75	2 50
3565 Rosalind Rose-crimson with soft salmon suffusion	60	1 80	6 00
3487 _c John Ingman Bright rose, tinted carmine	25	75	2 50

SALMON

3416 Barbara Large soft salmon flowers	25	75	2 50
3575 Stirling Stent Deep salmon with an orange suffusion	25	75	2 50
3494 Liberty Brilliant glowing salmon with an orange cast	40	1 20	4 00
3512 Melba The fine flowers are a clear light salmon	25	75	2 50

ORANGE

3566 Robert Sydenham Glowing orange self	25	75	2 50
3465 Fordhook Orange A remarkable new orange Sweet Pea. Fully described on page 25. Pkt. (12 seeds) 25 cts.	—	—	—
3580 Tangerine A very fine deep orange	45	1 35	4 50
3480 Helen Lewis Standard orange-crimson; wings orange-rose	25	75	2 50
3469 George Sawyer A clear shade of bright orange, tinted salmon. Pkt. (20 seeds) 25 cts.	—	—	—
3486 _b John Porter Rich orange, suffused pink	25	75	2 50

ORANGE-SCARLET

3581 Thomas Stevenson Improved Standard orange-scarlet, wings rosy scarlet	25	75	2 50
3578 The President Dazzling orange-scarlet	25	75	2 50
3572 _b Sensation A fine new variety in this class	70	2 10	7 00

LIGHT CERISE

3476 _b Glory A beautiful light cerise with salmon suffusion. (½ oz., 55 cts.)	1 00	3 00	10 00
3444 Doris Rich cherry-pink flowers	40	1 20	4 00
3502 Hawlmak Cerise An outstanding and glowing rose-cerise on cream ground. (½ oz., \$1.05)	2 00	6 00	20 00
3483 Hope A bright cerise with scarlet-salmon suffusion	30	90	3 00
3485 Illuminator Rich cerise with a tinge of salmon	25	75	2 50
3573 Sincerity Cerise self of largest size	25	75	2 50
3523 Mrs. G. W. Bishop Cerise, suffused salmon and orange	25	75	2 50

DEEP CERISE

3455 Fiery Cross Bright deep cerise shaded orange	25	75	2 50
3570 _a Royal Salute Rich fiery cerise; very bright	35	1 00	3 50
3570 Royal Scot A very fine new cerise self	60	1 80	6 00
3426 _a Brilliant Brilliant cherry-cerise; very large flowers	70	2 10	7 00
3403 Alexander Malcolm An intense and very bright cerise self	25	75	2 50

CRIMSON

3429 Charity Rich brilliant crimson. Perfectly sunproof	30	90	3 00
3488 King Edward Deep carmine-crimson	25	75	2 50
3582 Unwin's Crimson This is considered one of the finest and most attractive crimsons in existence	1 50	—	—
3501 Maud Holmes A rich dark crimson shade	25	75	2 50

SCARLET

3522 Mrs. C. P. Tomlin Rich fiery red; sunproof	25	75	2 50
3571 Scarlet Duplex A new duplex of sunproof scarlet color. Pkt. (20 seeds) 25 cts.	—	—	—
3587 Vermillion Brilliant An intense and rich scarlet self	25	75	2 50
3507 Mascot's Scarlet An outstanding and new variety in this class	70	2 10	7 00
3571 _b Scarlet Glow The flowers are large and of a bright glowing scarlet color	70	2 10	7 00

LAVENDER

	Oz.	¼ lb.	Lb.
3539 Orchid Deep lavender, suffused pink	\$0 25	\$0 75	\$2 50
3500 Margaret Madison A clear light blue self	25	75	2 50
3462 Florence Nightingale Clear lavender with a rose-pink sheen	25	75	2 50
3476 Hawlmark Lavender A true lavender of wonderful size	65	2 00	6 50
3564 R. F. Felton A fine lavender shaded with pink	25	75	2 50
3485b Austin Frederick Improved Immense flowers of a pleasing shade of lavender. (½ oz., 40 cts.)	70	2 10	7 00
3441 Don Alvar A beautiful soft lavender color	25	75	2 50
3475a Gladys One of the newer varieties in this class. (½ oz., 55 cts.)	1 00	3 00	10 00

BLUE

3589 Wedgwood A fine clear blue	25	75	2 50
3538 New Wedgwood This has larger flowers and is a better color than Wedgwood	60	1 80	6 00
3529 Mrs. Tom Jones Bright delphinium-blue	35	1 00	3 50
3424 Bluestone A distinct and striking new blue	60	1 80	6 00
3552a Princess Patricia A pleasing shade of helio-blue	70	2 10	7 00

DARK BLUE

3425 Blue Monarch Extra large dark blue self	25	75	2 50
3434 Commander Godsall A new deep violet-blue self	50	1 50	5 00
3486a Jack Cornwell A very fine rich dark blue	40	1 20	4 00

MAUVE and PURPLE

3493 The Lady Eveline Beautiful rosy mauve	25	75	2 50
3492 King Mauve A pleasing shade of rosy mauve	25	75	2 50
3457 Floradale Purple The finest of all purple shades. (½ oz., 65 cts.)	1 20	3 60	12 00
3569 Royal Purple The large flowers are a clear rosy purple	25	75	2 50
3494c Le Mahdi A pleasing shade of rich purple	70	2 10	7 00

MAROON

3591 Warrior Rich reddish maroon, flushed bronze	25	75	2 50
3479 Hawlmark Maroon Like polished mahogany	65	2 00	6 50
3557 Ravenswing A striking new blackish maroon. Pkt. (20 seeds) 25 cts.	—	—	—

ART SHADES

3482 Helio Standard lavender suffused bronze, with wings of a unique shade of lavender tinted bronze	70	2 10	7 00
3486 Irish Belle Lilac, flushed delicate pink	25	75	2 50
3547 Prince George A pastel rosy lilac	25	75	2 50
3427 Brocade Satiny salmon, lavender and rose-pink	45	1 35	4 50
3430 Charles Foster Hydrangea pastel shades	25	75	2 50
3568 Rosina An art shade combination of pink and lavender	25	75	2 50

BICOLOR

3518 Mrs. Cuthbertson Standard rose-pink; wings white	25	75	2 50
3574 Sparkler Standard bright rose; wings primrose	25	75	2 50
3442b Dora Standard rose-pink; wings cream	70	2 10	7 00
3422 Blanche Ferry Spencer Standard rich rose-pink; wings white, flushed pink	25	75	2 50
3451 Elsie Edwards Standard rich rose-pink on cream; wings creamy rose	25	75	2 50

STRIPED

3572 Senator Claret stripes on heliotrope	25	75	2 50
3532 Mrs. W. J. Unwin White flaked with orange-scarlet	25	75	2 50
3452 Empress Eugenie Soft violet-blue flakes on white ground	25	75	2 50
3533 Mrs. T. W. Warren White ground, attractively striped and marbled with mid-blue	25	75	2 50
3496 Loyalty A violet flake on white	25	75	2 50

MIXTURES

3599 Burpee-Blend A complete mixture of all colors	20	60	2 00
3600 Special Mixture of Light Shades	25	70	2 25
3601 Novelty Mixture The best of newer varieties	30	90	3 00

Burpee's Flower Seeds

Flower seeds of the finest varieties and highest quality have always been a specialty with the House of Burpee. **Floradale Farms** have come to be known as the California Home of Flowers and, in addition to the many acres devoted there to the production of flower seeds, we grow annually a large number of important varieties at **Fordhook Farms** in Pennsylvania and **Sunnybrook Farm** in New Jersey. Those seeds which we do not grow on our own farms are produced under our direct supervision and every possible safeguard is used to protect the Quality of Burpee's Seeds.

In the list below we have not attempted to give descriptions, for this is primarily a business catalog. BURPEE'S ANNUAL for 1923, our retail catalog, is the Leading American Seed Catalog and gives detailed information and complete descriptions. If any further particulars are desired, we shall be glad to answer inquiries promptly and fully.

Our catalog is our only salesman. We do not send out traveling men to solicit florists' orders. Look through this catalog at your first opportunity and send your order directly to us by mail. It will be filled promptly and carefully.

We do not offer "Trade Packets" of flower seeds as the name "trade packet" is indefinite. In every case we are offering suitable fractions of an ounce of the more expensive varieties at reasonable prices. If still smaller quantities are desired you may order "retail" packets (for which see BURPEE'S ANNUAL) at a discount of 25%.

All FLOWER SEEDS listed in this catalog will be sent to you postpaid at the prices quoted.

We solicit your inquiries and your orders. We are ready to serve you and assure you of our heartiest co-operation in making your business a success.



	¼ oz.	Oz.
1501 <i>Abronia umbellata</i>	\$0 25	\$0 80
1503 <i>Abutilon</i> , Royal Prize, Mixed..... (¼ oz., 45 cts.)	75	2 75
3702 <i>Achillea ptarmica</i> fl. pl., White (The Pearl)..... (⅓ oz., 70 cts.)	1 25	4 00
	Oz.	¼ lb.
2833 <i>Acroclinium</i> , Mixed.....	\$0 45	\$1 35

AGERATUM

1505 Mexicanum, Blue... (¼ oz., 20 cts.)	50	1 50
1506 " White.....	50	1 50
1507 " Mixed.....	45	1 35
1508 " Tom Thumb, Blue (¼ oz., 20 cts.)	60	1 80
1509 " Tom Thumb, White (¼ oz., 20 cts.)	60	1 80
1510 " Tom Thumb, Mixed (¼ oz., 20 cts.)	55	1 70
1514 <i>Agrostemma</i> (<i>Lychnis</i>) <i>cœli rosea</i> (Rose of Heaven)...	30	90
2858 <i>Agrostis nebulosa</i> (Cloud Grass) (¼ oz., 30 cts.)	90	2 70
<i>Althea rosea</i> —see Hollyhock.		

Please notice that all flower seeds offered in Burpee's Blue List for 1923 will be mailed postpaid, anywhere, at the prices quoted.

ANTIRRHINUM (Snapdragon)

	¼ oz.	Oz.
Half-Dwarf Varieties		
1529 Amber Queen.....	\$0 30	\$1 00
1533 Brilliant Rose.....		
1530 Black Prince.....		
1531 Carmine Queen.....		
1550 Cottage Maid.....		
1535 Dainty Queen.....		
1537 Defiance.....		
1553 Firebrand.....		
1543 Golden Queen.....		
1536 Hawtmark Salmon.....		
1551 Mauve Beauty.....		
1538 Nelrose.....		
1540 Philadelphia Pink.....		
1542 Prima Donna.....		
1545 Prince Chamois.....		
1544 Purity.....		
1547 Queen of the North.....		
1546 Scarlet King.....		
1534 Shell-Pink.....		
1554 Sparkler.....		
1552 The Fawn.....		
1541 Velvet Gem.....		
1548 Vesuvius.....		
1549 Fancy Mixed..... (¼ lb., \$1.50)	20	50
Tall Varieties		
1565 Giant White.....	35	1 20
1556 Giant Yellow.....	35	1 20
1564 Giant Silver-Pink.....	35	1 20
1563 Giant Rose.....	35	1 20
1558 Giant Mixed..... (¼ lb., \$2.25)	25	75

Dwarf Varieties

1557 Dwarf Mixed.....	25	85
-----------------------	----	----

ALYSSUM

	Oz.	1/4 lb.
1520 Maritimum (Sweet Alyssum)	(Lb., \$2.25)	\$0 20 \$0 65
1522 Maritimum procumbens (Carpet of Snow)	(Lb., \$5.00)	50 1 50
1523 Maritimum Lilac Queen	(Lb., \$4.50)	45 1 35
1524 " Little Gem	(Lb., \$4.50)	45 1 35
3706 Saxatile compactum (Gold Dust)	(1/4 oz., 25 cts.)	75 2 25
1527 Amaranthus Tricolor Splendens	(1/4 oz., 20 cts.)	50 1 50
1528 " salicifolius	(1/4 oz., 25 cts.)	85 2 50
3708 Ampelopsis (tricuspidata) Veitchii (Boston Ivy)		50 1 50
3710 Anchusa italica, Dropmore	(1/4 oz., 25 cts.)	75 2 25
Angel's Trumpet—see <i>Datura</i> .		

AQUILEGIA (COLUMBINE)

	1/4 oz.	Oz.
3714 <i>Cœrulea</i>	\$0 50	\$1 50
3716 Long-Spurred Hybrids	45	1 60
3718 Skinneri	95	3 50
3720 Arabis alpina	15	45
1566 Arctotis grandis (Blue-Eyed African Daisy)	20	50
1567 Argemone grandiflora hybrida Mixed (Mexican or Prickly Poppy)	20	60
3900 Asparagus plumosus nanus (250 seeds, \$1.00; 1000 seeds, \$3.00)	—	—
3902 " sprengeri (250 seeds, 50 cts.; 1000 seeds, \$1.50)	—	—
1568 Asperula (orientalis) azurea setosa	—	25

ASTERS

American Late Branching

	1/4 oz.	Oz.	1/4 lb.
1571 Azure-Blue	\$0 35	\$1 20	\$3 60
1573 Crimson	40	1 40	4 20
1574 Dark Blue	40	1 40	4 20
1575 Lavender	40	1 30	3 90
1576 Invincible Pink	40	1 40	4 20
1578 Lavender-Pink	40	1 40	4 20
1579 Mary Semple (Shell-Pink)	40	1 40	4 20
1581 Purple	35	1 10	3 30
1582 Scarlet	40	1 40	4 20
1584 Rose-Pink	35	1 20	3 60
1586 White	50	1 50	4 50
1588 All Colors, Mixed	35	1 00	3 25

Daybreak

1591 Blue Bird	55	1 80	5 40
1593 Lavender			
1597 Daybreak (Pink)			
1599 Purity, or White Daybreak			
1601 Rose			
1603 Salmon	45	1 35	4 20
1605 All Colors, Mixed			

Crego's Giant

1606 Shell-Pink	40	1 40	4 20
1607 Azure-Blue			
1608 Purple			
1609 Lavender			
1610 Rose-Pink			
1611 Crimson			
1612 White			
1613 Dark Blue	35	1 10	3 30
1614 All Colors, Mixed			

King—Upright Type

1615 Crimson	40	1 40	4 20
1615a Lavender			
1616 Pink			
1617 Rose			
1618 White			
1619 Violet			
1621 All Colors, Mixed			

Early Branching Royal

1636 Lavender	40	1 40	4 20
1637 Pink			
1638 Purple			
1639 White			
1641 Rose			
1642 All Colors, Mixed	35	1 20	3 60

Comet

	1/4 oz.	Oz.	1/4 lb.
1665 Giant Branching Comet, White	\$0 45	\$1 50	\$4 50
1667 Giant Branching Comet, Mixed	35	1 20	3 60

Queen of the Market (American Grown)

1680 Crimson	40	1 25	3 75
1681 Lavender			
1682 Shell-Pink			
1683 Rose-Pink			
1684 Purple			
1686 Dark Blue			
1687 White			
1688 Light Blue			
1689 All Colors, Mixed			

Burpee Beauty Type

1626 White Beauty	1 25	4 00	—
1627 Crimson Beauty	1 25	4 00	—
1629 September Beauty	55	2 00	6 00
1632 Lavender Beauty	55	2 00	6 00
1633 American Beauty	55	2 00	6 00
1634 Purple Beauty	55	2 00	6 00

New Early Beauty Asters

1645 Carmine-Rose	1 15	3 60	—
1646 Purple			
1647 Shell-Pink			

Other Asters

1590 Crimson Giant	45	1 60	4 80
1620 Mikado, or Rochester	45	1 50	4 50
1622 White Mikado	45	1 50	4 50
1623 Peerless White	45	1 65	4 90
1624 America (Enchantress)	40	1 40	4 20
1630 Peerless Pink	45	1 60	4 80
1631 Sensation	60	2 20	6 60
1635 Lavender Gem	70	2 60	7 80

Asters in Mixture

1725 Dwarf Bouquet Mixed	60	2 20	6 60
1728 Single Mixed	—	70	2 25
1735 Fordhook Favorites—Finest American Types, Mixed (Lb., \$9.00)	30	90	2 75

BALSAM

Burpee's Defiance Strain

	1/4 oz.	Oz.
1741 Chamois-Rose	50	2 00
1742 Burpee's Exquisite		
1743 Pure Pink		
1744 Rose, White Spotted		
1745 Creamy Yellow		
1746 Scarlet, White Spotted		
1748 Royal Purple		
1750 Shining Scarlet		
1752 Violet, White Spotted		
1754 Pure White		
1756 White, Tinted Lilac		
1761 Fordhook Fancy		
1762 Fordhook Tricolor		
1759 All Colors, Mixed		
1763 Camellia-Flowered, Mixed		

BEDDING BEGONIAS

(Begonia Semperflorens)

	1/16 oz.	1/4 oz.	Oz.
1772 Duchess of Edinburgh	\$1 65	\$5 50	\$20 00
1774 Gracilis Alba	1 00	3 50	12 00
1776 " Prima Donna	3 50	12 00	40 00
1778 Vernon	75	2 50	9 00
1780 Vulcan (Burpee)	2 00	6 60	22 00
1781 Semperflorens Alba	1 30	4 20	14 00
1782 " Fordhook Pink (Pkt., 50 cts.)	—	—	—
1784 Burpee's Special Mixture	1 00	3 00	10 00
3905 Begonia , Tuberous-Rooted Single Mixed (1000 seeds, 45 cts.)	6 00	—	—
3907 Begonia , Tuberous-Rooted Double Mixed (500 seeds, 75 cts.; 1/32 oz., \$8.00)	—	—	—

	Baby's Breath—(see Gypsophila.	¼ oz.	Oz.
2906	Balloon Vine— <i>Cardenium halicacabum</i> . (¾ lb., 60 cts.)	—	\$0 20
	Balsam Apple—see <i>Momordica balsamina</i> .		
	Balsam Pear—see <i>Momordica charantia</i> .		
1767	<i>Bartonia aurea</i>	\$0 25	75

BELLIS PERENNIS

	⅛ oz.	¼ oz.	Oz.
3724	Longfellow	\$0 45	\$0 85 \$3 25
3725	Snowball	45	85 3 25
3726	Fine Double, Mixed	40	75 2 50
3727	Double Quilled, Mixed	45	85 3 25
3732	<i>Bocconia cordata</i> (Plume Poppy) (½ oz., 30 cts.; ¾ lb., \$1.40)	—	— 50
	Boston Ivy—see <i>Ampelopsis</i> .		
1790	<i>Brachycome iberidifolia</i> (Swan River Daisy)	25	80
2863	<i>Briza maxima</i> (Quaking Grass)	—	— 25
1793	<i>Browallia demissa</i> , Mixed	—	20 60
3913	<i>Calceolaria hybrida</i> , Finest Mixed (½ oz., \$6.50)	—	— —

CALLIOPSIS

	Oz.	¼ lb.
1808	Dwarf Tiger Star, Mixed (Tiger-flower)	\$0 30 \$0 90
1809	Drummondii (Golden Wave)	30 90
1812	Tinctoria	30 90
1813	Tall Mixed (Lb., \$2.90)	30 90
3768	Grandiflora	40 1 25

CALENDULA

1798	Nankeen	}	20 60	
1799	Favorite			
1800	Lemon Queen			
1802	Orange King			
1803	Royal Trianon			
1804	Prince of Orange			
1806	Meteor			
1805	Double, Mixed (Lb., \$1.00)			15 35
1805a	Stellata—(Yellow Starflower) (Pkt., 10 cts.; 3 pkts., 25 cts.)			1 00 —

CAMPANULA

	¼ oz.	Oz.
3733	Medium, Single Mixed	\$0 20 \$0 50
3734	Double Mixed	35 1 25
3735	Calycanthemata, Blue	55 2 00
3737	Calycanthemata, Rose	65 2 25
3739	Calycanthemata, White	65 2 25
3741	Calycanthemata, Mixed	55 2 00
3743	Carpatia, Blue	35 1 20
3744	White	35 1 20
3745	Pyramidalis, White	35 1 10
3747	Blue	35 1 10
3746	Persicifolia, Mixed	90 2 70

	Oz.	¼ lb.
2911	Canary Bird Flower (<i>Tropaeolum peregrinum</i>)	\$0 40 \$1 20
	Canterbury Bells—see <i>Campanula</i> .	

CANDYTUFT

Annual Varieties

1816	Giant Hyacinth-Flowered (½ oz., 20 cts.)	50 1 40
1819	Little Prince (½ oz., 20 cts.)	50 1 40
1826	Umbellata, Dark Crimson	30 90
1829	Lilac	30 90
1830	Mixed	20 60

Perennial Candytuft

	¼ oz.	Oz.
3829	<i>Iberis sempervirens</i>	\$0 55 \$2 15
1845	<i>Canna</i> , Improved Large Flowering, Mixed (¾ lb., \$1.10)	— 40
2912	Cardinal Climber <i>Cardiospermum</i> —see Balloon Vine	45 1 60

CARNATION

	¼ oz.	Oz.
1848	Marguerite Mixed	\$0 35 \$1 10
3755	Double Mixed	60 1 85
3757	Early Dwarf Vienna Mixed	60 1 85
3915	Perpetual or Tree, Mixed. Very fine—Floradale grown	80 3 00
	Castor-Oil Bean—see <i>Ricinus</i> .	

CELOSIA

1860	Pyramidalis Magnificent Carmine	}	30 1 05
1861	" Golden Yellow		
1862	" Orange-Red		
1863	" Reddish Plum		
1865	" Crimson-Scarlet		
1864	" Mixed	25 80	
1859	Childsii (Chinese Woolflower), Crimson	45 1 60	
1867	" Yellow	75 2 50	
1868	" Pink	60 2 00	
1866	Spicata	25 75	
1912	Cockscomb (<i>Celosia cristata</i>) Giant Empress	45 1 60	
1917	" Choice Dwarf, Mixed	35 1 20	

CENTAUREA

	Oz.	¼ lb.
1869	Imperialis, White	\$0 65 \$1 85
1871	" Purple	65 1 85
1876	" Mixed	45 1 25
1878	Americana (½ oz., 20 cts.)	60 2 00
1882	Cyanus (Cornflower), Blue	30 95
1884	" Single, Mixed	25 75
1886	" Double, Rose-Pink	45 1 35
1887	" Blue	40 1 20
1885	" Mixed	30 90
1888	Moschata, Marguerite	45 1 50
1889	Candissima (Cineraria) (¾ oz., 55 cts.)	2 00 6 00
1891	Gymnocarpa	60 2 00
3763	Montana (¾ oz., 30 cts.)	95 3 10
	<i>Centaurea suaveolens</i> —see Sweet Sultan.	

3767	<i>Cerastium tomentosum</i> (Snow-in-Summer) (¾ oz., 50 cts.)	1 75 —
3765	<i>Cheiranthus Allionii</i> (¼ oz., 25 cts.)	75 2 20
3764	<i>Chelone</i> (<i>Pentstemon</i>) <i>barbata</i> <i>Torreyi</i> (Shell Flower) (¾ oz., 35 cts.)	1 10 3 25
	Chinese Lantern Plant—see <i>Physalis</i> .	

CHRYSANTHEMUM

1896	Annual Single, Mixed	30 1 00
1903	Coronarium, Double, Mixed	30 90
1904	(<i>Matricaria</i>) <i>inodorum plenisimum</i> (½ oz., 30 cts.)	90 2 60
3750	Fordhook Early, Single-Flowering Perennial, Mixed (¼ oz., \$2.70)	9 00 —
3920	<i>Cineraria hybrida</i> , Large-Flowered, Finest Mixed (500 seeds, 80 cts.; 1000 seeds, \$1.45; ¼ oz., \$37.00)	— —
1906	Clarkia, Finest Mixed	45 1 35
3766	<i>Clematis paniculata</i>	50 1 50
1909	<i>Cleome spinosa</i> (pungens) (Giant Spider Plant), Rose	30 90
1910	" spinosa (pungens), White	30 90
2858	Cloud Grass (<i>Agrostis Nebulosa</i>) (¾ oz., 30 cts.)	90 2 70
2913	<i>Cobæa scandens</i>	60 1 95
	Cockscomb—see <i>Celosia</i> .	
2868	<i>Coix Lachryma Jobi</i> (Job's Tears)	10 25

¼ oz. Oz.

1921	<i>Coleus</i> Sunset Large-Leaved (500 seeds, 45 cts.)	\$2 50 \$8 00
1927	" Fine Mixed	1 50 4 50
	Columbine—see <i>Aquilegia</i> .	
	Convulvulus—see Morning Glory.	
	Coreopsis—see <i>Calliopsis</i> .	

	Oz.	¼ lb.
1928	Corn, Ornamental, Burbank's Rainbow	\$0 15 \$0 40

COSMOS

		Oz.	¼ lb.
1929	Burpee's Crimson Ray.....	\$0 35	\$0 95
1931	" White Ray.....	35	95
1932	Lady Lenox.....	30	90
1933	White Lady Lenox.....	35	95
1937	Large Early-Flowering, Crimson... 45	1 30	
1939	" " " Rose.....	45	1 30
1941	" " " White.....	45	1 30
1942	" " " Mixed.....	40	1 20
1944	Giant-Flowered, Crimson.....	30	90
1947	" " Mixed.....	25	75
		¼ oz.	Oz.
1946	Double Crested, Crimson King.....	\$0 70	\$2 00
1948	" " Pink Beauty.....	70	2 00
1949	" " White Queen.....	70	2 00
1950	" " Mixed.....	60	1 80

Crimson Flax—see *Linum grandiflorum rubrum*.

CYCLAMEN

		100 Seeds	1000 Seeds
3924	Persicum giganteum, Mixed.....	\$1 00	\$9 50
3930	Pure White.....	1 25	11 75
3931	Light Pink.....		
3932	Deep Pink.....		
3933	Salmon.....		
3934	Crimson.....		
3935	White, Carmine Eye.....		

CYPRESS VINE

		Oz.	¼ lb.
2919	Scarlet.....	\$0 40	\$1 20
2921	White.....	40	1 20
2923	Mixed.....	35	1 00

DAHLIA

		¼ oz.	Oz.
1952	Decorative, Mixed.....	\$0 40	\$1 40
1953	Large-Flowering Double.....	60	1 75
1964	Cactus, Mixed.....	75	2 75
1965	Peony-Flowered, Mixed.....	40	1 40
1966	Collarette, Mixed.....	40	1 20
1968	Superb Single, Mixed.....	20	50
3770	Daisy, Shasta.....	45	1 50
	Daisy, Double—see <i>Bellis</i> .		
3771	Daisy, Floradale..... (Pkt., 25 cts.)	2 15	—
	Daisy, Blue-Eyed African—see <i>Arctotis</i> .		
	Daisy, Golden African—see <i>Dimorphotheca</i> .		
	Daisy, Swan-River—see <i>Brachycome</i> .		
1973	<i>Datura meteloides</i> (Wrightii) (Angel's Trumpet).....	—	25
1979	" Mixed..... (¼ lb., 90 cts.)	—	35

DELPHINIUM

3772	Belladonna Seedlings.....	70	2 60
3776	Formosum.....	1 00	3 00
3777	Compact Blue (Chinense) (¼ lb., \$4.00)	50	1 50
3778	Choice Mixed.....	30	95
	<i>Delphinium ajacis</i> —see <i>Larkspur</i> .		

DIANTHUS

(Annual Chinese and Japanese Pinks)

		¼ oz.	Oz.	¼ lb.
1981	Chinensis, Double, Mixed.....	—	\$0 55	\$1 55
1989	Ch. Heald., Single, Mixed..	—	40	1 20
1994	" " Double, Mixed.....	—	70	2 10
1996	" " Mourning Cloak.....	\$0 30	95	3 00
1999	" " Dwarf Fireball.....	40	1 25	—
2001	" " Dwarf Snowball.....	40	1 25	—
2014	" " Lac., <i>Mirabilis</i>	30	95	—
2015	" " Salmon Queen.....	35	1 10	—
2016	" " Vesuvius.....	25	75	—
2021	" " Double, Mixed.....	25	80	2 40
2032	Fordhook, Mixed.....	25	75	2 25

Perennial Dianthus Oz. ¼ lb.

3783	<i>Plumarius</i> (Pheasant-Eye Pink)...	\$0 75	\$2 25
3785	" " <i>scoticus</i> fl. pl.	—	—
	(50 seeds, 30 cts.; 1000 seeds, \$5.00)	—	—

Dianthus barbatus—see *Sweet William*.
Dianthus Caryophyllus—see *Car-nation*.

2039	<i>Diagis</i> <i>Barbaræ</i> ... (¼ oz., 70 cts.)	\$2 00	—
3787	<i>Digitalis</i> (Foxglove) Fine Mixed (¼ oz., 20 cts.)	60	\$1 80
3789	" " White... (¼ oz., 20 cts.)	60	1 80
2038	<i>Dimorphotheca aurantiaca</i> (Golden African Daisy)	75	2 35
2033	" " Hybrids.....	80	2 40
2040	<i>Dolichos</i> , Burpee's Bush.....	25	75
2927	" " Darkness.....	25	75
2929	" " Daylight.....	25	75
3793	<i>Echinops sphærocephalus</i> (Globe Thistle)	40	1 25
2870	<i>Erianthus ravenneæ</i> (Pampas Grass)	35	1 00
3797	<i>Erigeron speciosus superbus</i> (¼ oz., 25 cts.)	70	—

ESCHSCHOLTZIA

(California Poppies)

2042	Pure White (alba).....	25	75
2043	Primrose Queen.....	50	1 50
2044	Rose-Crimson.....	45	1 25
2047	Fire-Flame.....	25	75
2049	Golden West..... (Golden African Daisy)	30	90
2050	Orange King.....	40	1 20
2051	Mandarin.....	40	1 20
2053	Rose-Cardinal.....	45	1 25
2054	Vesuvius.....	60	1 80
2055	Sunset Mixture.....	25	75
2046	<i>Douglasii</i>	40	1 20

2058	<i>Euphorbia marginata</i> (Snow-on-the-Mountain).....	45	1 25
2060	" <i>heterophylla</i> (¼ oz., 30 cts.)	90	—
2854	<i>Everlasting Flowers</i> , Mixed	50	1 65

For other **Everlastings**—see *Acroclinium*, *Gomphrena*, *Helichrysum*, *Rhodanthe* and *Xeranthemum*.

2064	<i>Feverfew</i> , double (<i>Chrysanthemum Parthenium</i> fl. pl.).....	40	1 20
	Perennial Flax —see <i>Linum perenne sibiricum</i> .		
3771	Floradale Daisy (Burpee's). (Pkt., 25 cts.; ¼ oz., \$1.30; ½ oz., \$2.15)	—	—

FORGET-ME-NOT

		¼ oz.	Oz.
2070	(<i>Myosotis</i>), <i>alpestris</i> , Blue.....	\$0 30	\$0 90
2071	<i>Alpestris</i> , Rose.....	30	90
2072	<i>Alpestris</i> , White.....	30	90
2073	<i>Alpestris</i> , Mixed.....	30	90
2068	<i>Palustris</i> (True).....	75	2 25
2074	<i>Palustris semperflorens</i>	1 10	4 00

		Oz.	¼ lb.
2881	<i>Fountain Grass</i> (<i>Pennisetum Ruppelii</i>).....	\$0 75	\$2 25
	Four-O'Clock —see <i>Mirabilis</i> .		
	Foxglove —see <i>Digitalis</i> .		
	Climbing Foxglove —see <i>Lophospermum</i> .		
3928	<i>Fuchsia</i> , Single and Double, Mixed (50 seeds, 35 cts.; 1000 seeds, \$5.00)	—	—

GAILLARDIA

2084	(Blanket Flower), Fine Mixed...	40	1 20
2086	<i>Picta Lorenziana</i> , Double Mixed..	45	1 35
3805	<i>Aristata</i> (<i>grandiflora</i>), Perennial..	45	1 35
3937	Geranium (<i>Pelargonium</i>) <i>zonale</i> , Floradale Fancy Strain (¼ oz., 25 cts.; ¼ oz., 60 cts.)	2 00	—
3806	<i>Geum coccineum</i> , Mrs. Bradshaw (¼ oz., 50 cts.)	1 80	—
3804	" <i>Lady Stratheden</i> (Pkt., 25 cts.; 5 pkts., \$1.00)	—	—
2090	<i>Gladioli</i> , Burpee's Fordhook Hybrids (¼ oz., 35 cts.)	1 20	3 60
	Globe Amaranth —see <i>Gomphrena</i> .		
	Globe Thistle —see <i>Echinops</i> .		
3955	<i>Gloxinia</i> , Giant-Flowered Mixed (200 seeds, 35 cts.; 1000 seeds, \$1.35)	—	—
	Hardy Gloxinia —see <i>Incarvillea</i> .		
2088	<i>Godetia</i> , Fine Mixed.....	50	1 50
	Gold Dust —see <i>Alyssum saxatile</i> .		
2838	<i>Gomphrena globosa</i> (<i>Globe Amaranth</i>), Mixed.....	50	1 50

GOURDS—ORNAMENTAL

	Oz.	¼ lb.
2933 Spoon.....	\$0 25	\$0 75
2935 Nest Egg..... (Lb., \$1.50)	25	75
2937 Dipper..... (Lb., \$2.50)	25	75
2938 Dishcloth or Luffa..... (Lb., \$2.75)	30	85
2948 Sugar Trough..... (Lb., \$2.75)	30	85
2953 All Varieties, Fine Mixed (Lb., \$2.00)	20	60
For other Ornamental Grasses —see Cloud Grass, Quaking Grass, Job's Tears, Pampas Grass, Fountain Grass and Plume Grass.		
2091 <i>Gypsophila elegans</i> , White (Lb., \$2.00)	20	60
2093 " " Rose.....	30	90
3507 " <i>paniculata</i> (Perennial Baby's Breath) (¼ oz., 20 cts.)	65	1 90
3809 <i>Helenium autumnale</i> superbum (¼ oz., 60 cts.)	2 00	—
Helianthus —see Sunflower.		

HELICHRYSUM

	¼ oz.	Oz.	¼ lb.
2840 Fire Ball.....	\$0 20	\$0 60	\$1 80
2842 Golden Ball.....	20	60	1 80
2844 Snow Ball.....	20	60	1 80
2847 Rose Queen.....	20	60	1 80
2848 Salmon Queen.....	20	60	1 80
2849 Violet Queen.....	20	60	1 80
2846 Mixed.....	—	55	1 65

HELIOTROPE

2100 Black King.....	75	2 25	—
2104 Lady in White.....	65	2 25	—
2109 Lemoine's Giant Hybrids (Fordhook grown), Mixed	75	2 50	—

3811 <i>Heuchera sanguinea</i> , Hybrids.....	85	2 50	—
3812 <i>Hibiscus</i> Giant Mallow Marvels, Mixed.....	40	1 20	—

HOLLYHOCK (*Althea rosea*)

	¼ oz.	Oz.
3814 Chater's Double, Light Pink....	\$0 40	\$1 25
3815 " " Maroon.....		
3816 " " Rose.....		
3817 " " Scarlet.....		
3818 " " Yellow.....		
3819 " " Pure White.....		
3823 " " Crimson.....		
3822 " " Finest Mixed.....	30	1 00
3826 Allegheny, Mixed.....	35	1 00
3828 Single, Mixed.....	35	1 00

	Oz.	¼ lb.
2960 <i>Humulus japonicus</i> variegatus.....	\$0 60	\$1 70
2112 <i>Hunemannia fumarifolia</i> (Santa Barbara Poppy).....	60	1 50
Hyacinth Bean —see <i>Dolichos</i> .		
Iberis —see Perennial Candytuft.		
Iceland Poppy —see Papaver.		
2116 Ice Plant (<i>Mesembryanthemum crystallinum</i>).....	40	1 10
3831 <i>Incarvillea Delavayi</i> (Hardy Gloxinia)..... (¼ oz. 80 cts.)	3 00	—
2962 <i>Ipomoea setosa</i> (Brazilian Morning Glory).....	45	1 35
2968 " <i>Fuchsia</i> -Flowered.....	40	1 20
Ipomoea purpurea —see Morning Glory.		
Ipomoea Quamoclit —see Cypress Vine.		
Ivy, Boston —see <i>Ampelopsis</i> .		
Ivy, Kenilworth —see <i>Linaria</i> .		
2868 Job's Tears (<i>Coix Lachryma</i>)....	10	25
Kniphofia —see <i>Tritoma</i> .		
2118 <i>Kochia trichophylla</i>	20	60
2119 " Giant Christmas.....	20	60
2974 Kudzu Vine , Japanese.....	40	1 20
2120 Lantana , Finest Mixed.....	40	1 20
2129 <i>Lavatera trimestris</i> alba, Purity.....	40	1 10
2130 " " rosea, Loveliness.....	40	1 20
3840 <i>Lilium regale</i> (<i>myrphyllum</i>) (¼ oz., \$1.15)	4 25	—

LARKSPUR

	Oz.	¼ lb.
2121 New Red.....	\$0 60	\$1 70
2122 Dwarf Rocket, Double, Mixed.....	60	1 70
2123 Tall Double Stock-Flowered, Rose (¼ oz., 20 cts.)	60	1 70
2135 Tall Double Stock-Flowered, Purple (¼ oz., 20 cts.)	60	1 70
2136 Tall Double Stock-Flowered, Flesh-Pink..... (¼ oz., 20 cts.)	60	1 70
2138 Tall Double Stock-Flowered, Lustrous Carmine..... (¼ oz., 20 cts.)	60	1 70
2125 Tall Double Stock-Flowered, White (¼ oz., 20 cts.)	60	1 70
2127 Tall Double Stock-Flowered, Sky-Blue..... (¼ oz., 20 cts.)	60	1 70
2139 Tall Double Stock-Flowered, Dark Blue..... (¼ oz., 20 cts.)	60	1 70
2124 Tall Double Stock-Flowered, Mixed Larkspur, Perennial—see <i>Delphinium</i> .	30	90

LATHYRUS LATIFOLIUS

3833 (Perennial Pea) Pink Beauty (¼ oz., 25 cts.)	75	2 25
3835 Purple..... (¼ oz., 25 cts.)	75	2 25
3837 Giant White..... (¼ oz., 30 cts.)	90	2 70
3839 Mixed.....	60	1 70
Lathyrus odoratus —see Sweet Peas, pages 22 to 28.		

2131 <i>Linaria Cymbalaria</i> (<i>Kenilworth Ivy</i>)..... (¼ oz., 45 cts.)	1 35	—
2132 " <i>maroccana</i> , Excelsior (¼ oz., 15 cts.)	45	1 25
2134 " <i>reticulata aurea purpurea</i> (¼ oz., 15 cts.)	40	1 20
2137 <i>Linum grandiflorum rubrum</i> (<i>Crimson Flax</i>).....	30	90
3841 " <i>perenne sibiricum</i> , Blue (<i>Perennial Flax</i>).....	60	1 80

LOBELIA

	¼ oz.	Oz.
2146 <i>Erinus gracilis</i> , Blue.....	\$0 40	\$1 20
2145 " <i>compacta</i> , Crystal Palace....	95	3 50
2151 " White Gem.....	65	1 95
2147 <i>Erinus</i> Varieties, Fine Mixed.....	35	1 20
2155 <i>Tenuior</i> (<i>ramosa</i>).....	55	1 85
3843 <i>Cardinalis</i>	1 30	5 00
2975 <i>Lophospermum</i> (<i>Maurandya scandens</i> (<i>Climbing Foxglove</i>))....	55	2 00

LUPINUS

	Oz.	¼ lb.
2158 <i>Subcarnosus</i>	\$0 45	\$1 25
2159 <i>Hirsutus</i> , Large Blue.....	20	55
2160 " Large Rose.....	25	75
2161 " Large White.....	25	75
2162 Annual Varieties, Mixed.....	20	60
3844 <i>Polyphyllus</i> , White.....	40	1 20
3844a " Rose.....	75	2 25
3845 " Blue.....	40	1 20
3846 " <i>Moerheimi</i> (¼ oz., 25 cts.)	45	1 50
3842 " Mixed.....	45	1 25
3853 <i>Lychnis chalconica</i> , Scarlet (¼ oz., 20 cts.)	60	1 70
3846a " <i>viscaria splendens</i> (¼ oz., 20 cts.)	55	1 55

MARIGOLD

2172 Tall African, El Dorado.....	55	1 65
2176 " Lemon Ball (¼ oz., 25 cts.)	75	2 15
2178 " " Orange Ball (¼ oz., 25 cts.)	75	2 15
2170 " " Double, Mixed.....	45	1 35
2183 Dwarf French, Double, Pulchra....	45	1 25
2185 " " Double, Orange Ball.....	60	1 75
2187 " " Double, Compact Gold Striped.....	60	1 75
2190 " " Double, Mixed.....	35	95
2194 " " Single, Legion of Honor..... (¼ oz., 20 cts.)	50	1 40
Marvel-of-Peru —see <i>Mirabilis</i> .		
2979 Maurandya Mixed (¼ oz., 45 cts.)	1 75	—
2208 Medicago (<i>Snails</i>), Mixed.....	30	90
Mexican or Prickly Poppy —see <i>Argemone</i> .		

MIGNONETTE (Reseda odorata)

	Oz.	¼ lb.
2213 Giant-Flowered Machet (Bismarck)	(¼ oz., 25 cts.) \$0 75	\$2 25
2217 Golden Sunset	(¼ oz., 20 cts.)	60 1 80
2218 Goliath	(¼ oz., 35 cts.)	1 00 3 50
2226 Pearl or White Goliath	(¼ oz., 30 cts.)	95 3 25
2229 Red Monster	(¼ oz., 30 cts.)	1 00 3 00
2232 Fordhook Finest, Mixed		45 1 25
2233 Common Sweet	(Lb., \$1.85)	20 55
Mimosa pudica—see Sensitive Plant.		
2242 Mimulus tigrinus grandiflorus	(¼ oz., \$1.25)	4 00 —
2244 " moschatus	(¼ oz., \$1.70)	6 50 —

MIRABILIS

2196 (Four-O'Clock, or Marvel-of-Peru), Tall, Mixed	(Lb., \$1.10)	15 40
2198 Tall Variegated-Leaved, Mixed		20 60
2200 Dwarf (Tom Thumb), Mixed		25 70
2993 Momordica Balsamina (Balsam Apple)		60 1 70
2995 " Charantia (Balsam Pear)		50 1 40

MOONFLOWER

2983 White-Seeded	50	1 50
2985 Cross-Bred, or Hybrid	55	1 55
2986 Giant Pink Hybrid	55	1 55
2987 Early-Blooming Sky-Blue	1 20	—
2991 Sky-Blue	70	2 10

MORNING GLORY

Dwarf (Convolvulus tricolor)		
2256 Mixed	(Lb., \$1.00)	10 30
Tall (Ipomœa purpurea)		
3009 Dark Blue		15 35
3011 Dark Red, or Imperial Crimson		15 35
3013 Light Blue		15 35
3017 Rose		15 35
3019 White		15 35
3020 White with Rose Center (Airy Fairy)		15 35
3021 Fine Mixed		10 25
3024 Rochester	(Lb., \$3.00)	40 1 20
3026 Double White Tassel		65 1 90
3027 " Snow Fairy		45 1 60
3028 Imperial Japanese, Mixed	(Lb., \$1.25)	20 45
3965 Musa Ensete (Abyssinian Banana Tree)	(100 seeds, \$1.25)	— —
Myosotis—see Forget-Me-Not.		

NASTURTIUMS

Dwarf Ornamental-Leaved		
	¼ lb.	Lb.
2262 Crystal Queen	\$0 45	\$1 25
2264 Deep Orange-Scarlet	45	1 25
2266 Golden Yellow	45	1 25
2272 Queen of Tom Thumbs (Crimson)	45	1 25
2276 Ornamental-Leaved, Mixed	50	1 50
2284 Dwarf Ivy-Leaved, Mixed	50	1 50
Dwarf Spencer, or David Burpee Type		
2295 Mixed David Burpee Type	45	1 25
Dwarf, or Tom Thumb Nasturtium		
2300 Aurora	45	1 25
2302 Beauty		
2313 Cloth of Gold		
2315 Cherry-Rose		
2324 Empress of India		
2329 Golden King		
2360 Golden Midnight		
2333 King of Tom Thumbs		
2335 King Theodore		
2339 Pearl		
2350 Vesuvius	40	1 15
2354 Burpee's Gorgeous Mixture	40	1 15

Dwarf Lilliput ¼ lb. Lb.

2367 Lilliputs, Mixed	\$0 50	\$1 50
-----------------------	--------	--------

Tall or Trailing

3061 Butterfly	40	1 15
3067 Dunnett's Orange		
3069 Fordhook Fashion		
3072 Golden-Leaved Scarlet		
3078 Midnight		
3080 Moonlight		
3092 Scarlet		
3096 Sunlight		
3097 Twilight		
3101 Ruby		
3110 Fordhook Favorite Mixture	35	1 00
3112 Giant-Flowered, Mixed	35	1 00
3143 Lobb's Finest, Mixed	40	1 15
3145 Trailing Tom Pouce, Mixed	50	1 50
3168 Tall Ivy-Leaved, Mixed	(Oz., 15 cts.)	40 1 15

3060 Burpee's Tall Ornamental-Leaved Mixed	45	1 25
--	----	------

2371 Nicotiana affinis (Alata grandiflora)

	Oz.	¼ lb.
(Flowering Tobacco)		
(¼ oz., 15 cts.)	\$0 45	\$1 35
2372 " " Hybrids	(¼ oz., 15 cts.)	35 1 00
2375 " sylvestris	(¼ oz., 15 cts.)	40 1 10
2382 Nigella damascena, Double, Mixed		20 45
2383 " Miss Jekyll		20 45

	¼ oz.	Oz.
2385 Nymphaea capensis zanzibarensis (Water Lily), Red and Blue, Mixed	\$1 25	\$3 95
2388 Oenothera (Evening Primrose), Mixed	(¼ lb., \$1.50)	— 50
Oriental Poppy—see Papaver.		
2392 Oxalis tropaeoloides (Corniculata atropurpurea)	60	2 25
2394 " valdiviensis	70	2 50
2870 Pampas Grass (Erianthus Ravenne)	(¼ lb., \$1.00)	— 35

PANSIES

Bedding Varieties

2419 Good Quality, Mixed	25	75
2420 Fine Mixed	(½ oz., 30 cts.)	50 1 50

Giant or Trimardeau Varieties

2421 Snow Queen	80	3 00
2423 Golden Queen		
2427 Celestial		
2429 Lord Beaconsfield		
2430 Peacock	95	3 50
2431 Imperial Blue	80	3 00
2433 Andromeda		
2435 Royal Purple		
2437 Victoria		
2441 Golden Bronze		
2442 Meteor	90	3 40
2443 Black King	80	3 00
2445 President Carnot	80	3 00
2447 Lord Baltimore	1 10	4 00
2455 Striped and Mottled, Mixed	90	3 40
2457 Trimardeau, Mixed (½ oz., 40 cts.)	70	2 60

Improved Giant-Flowering Strains

2449 Hortense Rose	1 30	5 00
2450 Bridesmaid	95	3 50
2451 Madame Perret	1 00	3 70
2453 Auricula-Flowered	80	3 00
2459 Paris Improved Blotched	90	3 40
2460 Cassier's Giant Odier	1 25	4 70
2461 Bugnot	1 50	5 75
2463 Masterpiece	1 25	4 80
2513 Burpee Blend of Giant and Fancy Types (Unsurpassed)	(¼ oz., \$1.25)	2 25 8 00
2500 Steele's Mastodon (Greenhouse Special Mixture)	(¼ oz., 60 cts.; ½ oz., \$1.00)	1 75 6 00

Tufted Pansies—see Violas.

		¼ oz.	Oz.
3847	Papaver (Perennial Poppies), Mixed.....	\$0 30	\$1 00
3849	" nudicaule, Mixed (Ice- land Poppy).....	30	1 00
3851	" orientale (Oriental Poppy).....	35	1 10
3852	" orientale Hybrids, Mixed.....	30	1 00
	For Annual Varieties—see Poppies . Pelargonium —see Geranium.		
2881	Pennisetum Ruppelii (Fountain Grass)..... (¼ lb., \$1.90)	—	60
3854	Pentstemon , Large-Flowered, Florida Fancy Strain, Mixed.....	70	2 00
	Perennial Peas —see Lathyrus.		

PETUNIA HYBRIDA

2550	Dwarf Compact, Adonis.....	40	1 25
2551	" " Baby Blue (Bur- pee).....	35	1 20
2552	" " Brilliant Rose.....	75	2 25
2559	" " Snowball.....	60	2 00
2554	" " Inimitable.....	40	1 25
2556	" " Enchantress Mix- ture.....	70	2 10
2560	Rosy Morn.....	90	2 70
2561	General Dodds.....	70	2 15
2558	Howard's Star.....	55	2 00
2564	Striped, Mixed.....	65	1 90
2565	Hybrida, Mixed..... (Lb., \$8.00)	20	60
2553	Balcony Blue or Purple.....	2 50	7 50
2555	" White.....	1 20	4 50
2557	" Rose.....	1 20	4 50
2567	Defiance, Largest-Flowering, Mixed (¼ oz., 75 cts.).....	10 00	35 00
2578	Phacelia campanularia	90	2 70

PHLOX DRUMMONDII

		¼ oz.	Oz.	¼ lb.
2583	Pure White (alba).....	\$0 40	\$1 10	\$3 75
2585	Blood-Red.....			
2587	Brilliant.....			
2589	Flesh-Pink (carnea).....			
2591	Chamois-Rose.....			
2592	Scarlet (coccinea).....			
2595	Rose with White Eye (rosea alba oculata).....			
2599	Red with White Eye (splendens).....			
2601	Violet (violacea).....			
2603	Primrose.....			
2581	Fordhook Finest, Mixed.....	35	1 00	3 50
2605	Fine Mixed.....	25	75	2 25
2607	Starred and Fringed, Mixed.....	30	1 00	3 00
		¼ oz.	Oz.	
2609	Dwarf Compact, Fireball.....	\$0 65	\$2 25	
2611	" " Snowball.....	65	2 25	
2613	" " Mixed.....	55	2 00	
2615	Dwarf Large-Flowering Cecily, Mixed.....	35	1 10	
	Pinks —see Dianthus.			
3856	Physalis Franchetii (Chinese Lan- tern Plant).....	40	1 50	
3857	Platycodon grandiflorum Mariesii, Dwarf Blue.....	60	1 80	
2883	Plume Grass (Trycholæna Rosea). Plume Poppy —see Bocconia.	—	40	
3859	Polyanthus (Primrose), Large- Flowering, Mixed.....	1 10	4 00	



A field of Phlox growing for seed on FORDHOOK FARMS

POPPIES

		Oz.	¼ lb.
(Single- and Double-Flowering Annual Varieties)			
2618	Shirley, Improved.....	\$0 40	\$1 10
2622	White Shirley.....	40	1 10
2624	Fire Dragon (dubium lævigatum).....	30	85
2625	Burbank's Silver Lining.....	30	80
2627	Somniferum (White Opium Poppy).....	25	75
2629	Tulip-Flowered (glaucum).....	40	1 20
2630	Double Shirley Hybrids.....	70	2 10
2631	Ryburgh Hybrids.....	75	2 25
2632	Cardinal, Double.....	30	1 00
2633	Danish Flag (Danebrog).....	20	60
2634	Burpee's Fairy Blush.....	40	1 30
2636	Fordhook Fairies, Mixed.....	30	1 00
2638	Mikado.....	30	1 00
2639	Shrimp-Pink (Burpee).....	30	90
2640	Snowdrift—(True).....	30	90
2642	Double Carnation-Flowered, Mixed.....	15	45
2644	Double Peony-Flowered, Mixed.....	15	45
	Poppy , California—see Eschscholt- zia.		
	Poppy , Prickly—see Argemone.		
	Poppy , Santa Barbara—see Hunne- mannia.		
	Poppy , Perennial Varieties—see Papaver.		

PORTULACA

		¼ oz.	Oz.
2652	Single, Mixed,..... (¼ lb., \$1.75)	\$0 18	\$0 60
2653	Double, Orange.....	1 10	4 00
2655	" Red.....	1 10	4 00
2657	" White.....	1 10	4 00
2659	" Mixed.....	75	2 80
2662	Giant-Flowered Parana.....	30	80

PRIMULA

3861	Auricula, Mixed.....	1 30	5 00
3865	Vulgaris.....	1 60	4 80
3987	Malacoides.....	2 50	8 50
3988	Obconica grandiflora, Mixed..... (500 seeds, 45 cts.; 1000 seeds, 80 cts.)	—	—
3969	Sinensis fimbriata, Alba Magnifica (500 seeds, 45 cts.; 1000 seeds, 80 cts.)	—	—
3971	Sinensis fimbriata, Blue (500 seeds, 60 cts.; 1000 seeds, \$1.10)	—	—
3975	Sinensis fimbriata, Rosy Morn (500 seeds, 55 cts.; 1000 seeds, \$1.00)	—	—
3977	Sinensis fimbriata, Bright Red (500 seeds, 55 cts.; 1000 seeds, \$1.00)	—	—
3984	Sinensis fimbriata, Splendid Mixed (1000 seeds, 40 cts.)	2 70	9 00
3986	Sinensis fimbriata filicifolia, Mixed (1000 seeds, 50 cts.)	3 00	10 00
	Evening Primrose —see Enothera.		
3868	Pyrethrum (Chrysanthemum Parthenium aureum (Golden Feather)....	45	1 35
3870	" (Chrysanthemum) roseum.....	70	2 25
2863	Quaking Grass (Briza Maxima) (¼ lb., \$1.20)	—	40
2774	Queen Anne's Lace Flower (Pkt., 25 cts.)	55	2 00
	Reseda odorata —see Mignonette.		

		Oz.	¼ lb.
2850	Rhodanthe , Single, Mixed (¼ oz., 15 cts.)	\$0 45	\$1 25

RICINUS

2663	(Castor Oil Bean), Communis cam- bodgensis..... (Lb., \$1.75)	15	50
2665	Communis sanguineus.. (Lb., \$1.75)	15	50
2669	" Mixed..... (Lb., \$1.20)	15	40
2671	" zanzibarensis (Lb., \$1.20)	15	40

		¼ oz.	Oz.
3872	Rocket , Sweet, Mixed (Hesperis matronalis)..... (¼ lb., \$1.10)	—	\$0 40
	Rose of Heaven —see Agrostemma.		
3874	Rudbeckia speciosa (Newmannii)	\$0 70	2 50
2677	Salpiglossis , Large-Flowering, Mixed.....	30	1 00

SALVIA

	¼ oz.	Oz.
2683 Patens	\$1 85	\$7 00
2689 Splendens	55	1 90
2685 " Zurich	70	2 45
2687 " Dark Blood-Red	60	1 80
2691 America or Globe of Fire	1 15	3 50
	Oz.	¼ lb.
3875 Saponaria ocymoides	\$0 40	\$1 10

SCABIOSA

	¼ oz.	Oz.
2699 Dwarf Double, Mixed	40	1 20
2701 Tall Azure Fairy (¼ oz., 25 cts.)	65	2 00
2702 Azure Fairy Seedlings	50	1 50
2703 Tall Double, Black (¼ oz., 20 cts.)	60	1 80
2704 Double Red	60	1 80
2705 Tall Double, Snowball (¼ oz., 20 cts.)	60	1 80
2706 Double Rose	60	1 80
2707 Tall Double, Mixed, Large-Flowered (½ oz., 25 cts.)	45	1 35

	¼ oz.	Oz.
3876 Caucasica, Lilac	\$1 20	\$3 60
2694 Schizanthus wisetonensis	45	1 50
2709 Sensitive Plant (Mimosa pudica) Shell Flower—see Chelone	15	40
3991 Smilax (Asparagus asparagoides) Snapdragon—see Antirrhinum. Snow-in-Summer—see Cerastium. Snow-on-the-Mountain—see Euphorbia marginata.	20	55
3879 Statice (Limonium) latifolia	35	1 20
2713 Stevia (Piqueria) serrata	45	1 50

STOCKS

Large-Flowering Dwarf Ten Weeks

	⅛ oz.	¼ oz.	Oz.
2718 Pure White	\$0 35	\$0 60	\$2 20
2719 Canary-Yellow			
2721 Bright Pink			
2723 Blood-Red			
2725 Light Blue			
2727 Purple			
2730 Mixed			

Mammoth Beauty of Nice

2731 Mont Blanc	35	65	2 50
2732 Monte Carlo			
2734 Beauty of Nice			
2738 Monaco			
2740 Cote D'Azur			
2741 Summernight			
2742 Violet of Parma			
2743 Beauty of Nice Mixture			

Perpetual, or Cut and Come Again

	¼ oz.	Oz.
2744 White Perpetual or Princess Alice	\$0 70	\$2 50
3880 Emperor Mixed	1 75	5 50
3882 Stokesia (Iayis) cyanea, Blue	45	1 50
3883 " " White	55	2 00
3999 Streptocarpus, New Hybrids (½ oz., \$2.35)	—	—

SUNFLOWER (Helianthus)

	Oz.	¼ lb.
2756 Single Stella	\$0 30	\$0 90
2758 Seedlings of Stella	25	75
2760 Miniature	40	1 20
2762 Red	40	1 15
2765 Double Chrysanthemum-Flowered (Lb., \$2.00)	25	65
2767 Many-Flowered Double (Lb., \$1.90)	20	60
Sweet Alyssum—see Alyssum.		
2752 Sweet Sultan (Centaurea moschata), Yellow	65	2 00
2754 " " Finest Mixed (¼ oz., 20 cts.)	60	1 80

SWEET WILLIAM

	Oz.	¼ lb.
3884 (Dianthus barbatus), Single, Mixed	\$0 75	\$2 25
3886 Pink Beauty (¼ oz., 50 cts.)	1 50	4 50
3890 Scarlet Beauty (¼ oz., 50 cts.)	1 50	4 50
3892 Double, Mixed (¼ oz., 30 cts.)	80	2 40
2755 Annual, Mixed (¼ oz., 35 cts.)	1 00	3 00
Tagetes—see Marigold.		

	¼ oz.	Oz.
3700 Thunbergia alata, Mixed (¼ lb., \$2.40)	\$0 35	\$1 00
1808 Tiger Flower (Calliopsis radiata) (¼ lb., 90 cts.)	—	30
Tobacco, Flowering—see Nicotiana.		
2770 Torenia Fournieri	90	2 75
2772 " " Alba	70	2 50
3893 Tritoma (Kniphofia), Early Perpetual-Flowering	35	1 10
3893b " Pfizeri	30	1 00
Tropaeolum peregrinum—see Canary Bird Flower.		
Tropaeolum majus—see Nasturtiums.		
Trumpet Flower—see Datura.		
2883 Trycholæna (Plume Grass) rosea	—	40
3892a Tunica saxifraga	—	50
3898 Valerian (Centranthus), Red	25	75
3899 " " White	25	75

VERBENA HYBRIDA

2776 Mammoth Fordhook Famous, Mixed	50	1 50
2778 Mayflower, Sweet-Scented	50	1 50
2795 Yellow (lutea)		
2786 Mammoth Pink Shades		
2788 " Purple and Blue Shades		
2789 " Scarlet Defiance		
2791 " Pure White		
3893a Veronica spicata, Mixed	50	1 50

VINCA ROSEA

2796 Rose (Madagascar Periwinkle)	30	1 00
2799 Pure White	30	1 00
2798 White with Rose Eye	30	1 00
2801 Mixed	30	90
3896 Viola cornuta, Finest Mixed (Tufted Pansies)	60	1 80
2809 Virginian Stocks (Malcolmia maritima), Mixed (¼ oz., 50 cts.)	—	20
3894 Wallflower, Fine Double (¼ oz., 55 cts.)	95	3 50
3897 " Extra-Early Parisian. Water Lily—see Nymphæa.	35	1 20
2852 Xeranthemum, Mixed (¼ lb., \$1.85)	20	65
1805a Yellow Starflower (Calendula stellata) (Pkt., 10 cts.; 3 pkts. for 25 cts.)	—	—

ZINNIA ELEGANS

	Oz.	¼ lb.
2812 Burpee's New Cactus-Flowered Mixed (¼ oz., 80 cts.)	\$2 75	\$9 00
2811 Double Dwarf Lilliput, Mixed	75	2 50
2815 Pompon, Mixed (¼ oz., 25 cts.)	70	2 40
2817 Dwarf Fireball (¼ oz., 25 cts.)	70	2 00
2818 " Salmon-Rose (¼ oz., 25 cts.)	70	2 00
2819 " Snowball (¼ oz., 25 cts.)	70	2 00
2826 Mexicana Perfection Miniature (¼ oz., 30 cts.)	95	2 85
2823 Choice Double Mixed	40	1 20
2820 Curled and Crested, Mixed (¼ oz., 30 cts.)	95	2 85
2814 Giant Flesh-Pink (¼ oz., 35 cts.)	1 00	3 00
2821 " Rose (¼ oz., 40 cts.)	1 10	3 30
2822 " Golden Yellow (¼ oz., 40 cts.)	1 10	3 30
2824 " Primrose (¼ oz., 40 cts.)	1 10	3 30
2825 " Scarlet (¼ oz., 40 cts.)	1 10	3 30
2827 " White (¼ oz., 40 cts.)	1 10	3 30
2828 " Crimson (¼ oz., 40 cts.)	1 10	3 30
2829 " Purple (¼ oz., 40 cts.)	1 10	3 30
2830 " Canary-Yellow (¼ oz., 35 cts.)	1 10	3 30
2813 " Mixed (¼ oz., 30 cts.)	90	2 70
2832 " Picotee, Mixed (¼ oz., 60 cts.)	2 20	—
2834 Dahlia-Flowered, Mixed (¼ oz., 65 cts.)	2 40	—

FLOWERING BULBS AND ROOTS

The Florist, as well as the Landscape Gardener, will find much of interest in the following list. Burpee's Bulbs are selected with the same care and attention to Quality as are Burpee's Seeds. All of the bulbs and roots offered herein are first size (unless otherwise stated), sound and healthy, and sure to bloom if given reasonable care.

We take particular pains in specially packing bulbs and roots to ensure their arrival in good condition and, for this reason, always ship bulbs separately from seeds when both are ordered. **When placing your order, specify when and how you wish your bulbs to be sent. We do not ship in freezing weather unless ordered to do so, and then only at customer's risk.**

Our collection of Dahlias is especially worthy of attention. Our lists of Cannas, Gladioli, and Iris are not extensive but are carefully selected and comprise the best varieties for all purposes; in fact, it has been our aim throughout to offer Quality rather than Quantity. Refer to BURPEE'S ANNUAL for 1923, our retail catalog, for complete descriptions.

If you plant Tulips, Hyacinths, Narcissus, Crocus, or Hardy Perennials, send in your name now to receive a copy of BURPEE'S FALL BULB CATALOG (issued September 1st).

NOTE: Three or more bulbs will be supplied at the dozen rates, 25 or more at the 100 rates, and 250 or more at the thousand rates.

AMARYLLIS

	Doz.	Per 100
8901 Formosissima.....(25 cts. each)	\$2 25	—
8903 Johnsoni.....(65 cts. each)	6 00	—
8906 (Hippeastrum) Giant Mixed (40 cts. each)	3 75	—
8912 Apios tuberosa.....	85	\$5 50

BEGONIAS, TUBEROUS-ROOTED

8802 Single, Deep Rose.....	} 3 00	22 00
8805 " Pink.....		
8807 " Scarlet.....		
8810 " White.....		
8813 " Yellow.....		
8816 " Mixed.....	2 50	18 50
8821 Double, Deep Rose.....	} 3 75	27 00
8824 " Pink.....		
8827 " Scarlet.....		
8829 " White.....		
8830 " Yellow.....		
8833 " Mixed.....	3 25	23 50
8836 Frilled and Crested, Mixed.....	3 15	23 00
8914 Caladium esculentum (Colocasia) (7" to 9") (20 cts. each)	1 80	12 00
8915 " Fancy-Leaved (30 cts. each)	2 75	20 00
8918 Calla (Zantedeschia) elliotiana (1½" to 2") (35 cts. each)	3 50	25 00
8919 " ethiopic.....(30 cts. each)	2 75	20 00

CANNAS

"The Finest Six"

8410 Fiery Cross.....(25 cts. each)	2 35	17 50
8421 Eureka.....(25 cts. each)	2 20	16 50
8425 Cheerfulness.....(20 cts. each)	1 80	12 00
8428 Golden Gate.....(15 cts. each)	1 10	8 00
8444 City of Portland.....(25 cts. each)	2 40	18 00
8478 King Humbert.....(20 cts. each)	1 85	13 00

Shades of Red—Green Foliage

8405 Dragon.....	1 85	13 00
8408 Fanal.....	1 75	11 50
8415 Meteor.....	2 00	14 00
8419 Wintzer's Colossal.....	1 80	12 00

Yellow and Orange—Green Foliage

8437 Yellow King Humbert.....	1 10	7 50
8433 Orange Bedder.....	1 15	8 50
8435 The Gem.....	1 65	11 00

Rose and Pink—Green Foliage

8447 Hungaria.....	1 95	14 00
8456 Rosea Gigantea.....	1 85	12 75

Variegated—Green Foliage

8462 Gaety.....	1 45	10 00
8469 Souv. de Antoine Crozy.....	1 50	10 25

Bronze and Dark-Leaved

8473 Dr. E. Ackerknecht.....	1 75	14 00
8484 Varouna.....	2 50	18 00
8486 Wyoming.....	1 45	10 00

	Mixed	Doz.	Per 100
8495 Fordhook Trial Ground Mixture.....		\$0 75	\$5 00
8922 Cinnamon Vine.....		90	6 00
For Dahlias—see pages 39-40.			
8924 Evening Star (Cooperia pedunculata).....		55	3 50

FAIRY LILIES (Zephyranthes)

8926 Rose.....	1 90	13 50
8928 White.....	90	6 00

FUNKIA

8930 (Hosta) Subcordata.....	2 50	18 00
8933 Undulata Variegata.....	1 65	11 00

GLADIOLI

Burpee's New Primulinus Hybrids

This species of Gladioli has received much attention during recent years and has created a sensation wherever it was exhibited. The blooms are distinct in their large form and arrangement. The flowers are not large but very graceful and artistic.

8371 Adorable Dainty white flowers with a flush of pink.....	1 35	9 50
8376 Fire Queen Dazzling orange-vermilion with yellow throat.....	1 45	10 00
8382 Madam Wentholz Clear, true yellow flowers.....	1 35	9 50
8384 Maiden's Blush Dainty shell-pink flowers; extra-early.....	1 35	9 50
8389 Orange Beauty Brilliant orange; an early bloomer.....	1 45	10 00
8392 Queen Victoria Bright, glittering pink with silvery rose throat.....	1 35	9 50
8399 Primulinus Hybrids, Mixed A fine mixture with a wealth of beautiful colors.....(1000 for \$36.00)	60	3 85

Standard Varieties

8303 America.....	60	4 00
8307 Baron Hulot.....	1 10	7 00
8312 Goliath.....	90	6 00
8314 Halley.....	85	5 25
8320 Kunderdi Glory.....	90	6 00
8325 Mrs. Francis King.....	65	4 25
8327 Mrs. Frank Pendleton, Jr.....	1 00	6 50
8331 Mrs. Watt.....	90	6 00
8336 Niagara.....	95	6 25
8339 Peace.....	95	6 25
8341 Princepine.....	90	6 00
8345 Schwaben.....	95	6 25

Gladioli in Mixture

	Per 100	Per 1000
8360 Fine Mixed, First Size.....	\$2 75	\$25 00
8361 Fine Mixed, Second Size.....	2 50	22 00
8364 Light Shades, Mixed.....	3 25	30 00

BURPEE'S FORDHOOK HYBRID GLADIOLI

This distinct new race originated at **Fordhook Farms**. The flowers frequently measure 4 to 5 inches in diameter and range in colors from creamy white through all shades of pink, lavender, salmon and red.

	Per 100	Per 1000
8368 First Size, Mixed.....	\$4 00	\$37 50
8369 Second Size, Mixed.....	3 50	34 00

Burpee's New Fordhook Hybrid Gladioli

8310 FORDHOOK PINK

Fordhook Pink is an extremely early bloomer of sturdy habit, producing its flowers on stiff erect stems. The color is a pleasing shade of clear pink, slightly softer in the throat, where we find a small creamy white blotch. The flowers have a sparkling and glistening luster. The blooms are well placed and open widely, reflexing very slightly as they age. The flower stems are long and strong. The blooms are closely set on the stem. (\$1.00 each; 12 for \$8.50.)

GLOXINIAS

	Each	Doz.
8863 Queen Alexandra.....	\$0 40	\$3 75
8867 Scarlet, White Border.....		
8859 King George V.....		
8854 Duchess of York.....		
8865 Reading Purple.....		
8872 White, Purple Border.....		
8875 Mixed.....	35	3 50

	Doz.	Per 100
8941 <i>Hemerocallis flava</i>	\$1 95	\$14 00
8942 " <i>Florham</i>	1 85	12 50
8946 " <i>Kwanso fl. pl.</i>	1 45	10 00

9624 Hibiscus Giant Mallow Mar-vels.....	1 25	8 00
8947 Hyacinthus <i>candicans</i>	1 65	11 00

TALL BEARDED IRIS

8500 <i>Aurea</i>	1 25	8 00
8501 <i>Beethoven</i>	1 20	7 50
8502 <i>Celeste</i>		
8506 <i>Darius</i>		
8509 <i>Flavescens</i>		
8511 <i>Florentina Alba</i>		
8515 <i>Kochii</i>		
8516 <i>La Tendresse</i>		
8517 <i>Madame Chereau</i>		
8518 <i>Mrs. H. Darwin</i>		
8522 <i>Pallida Dalmatica</i>		
8523 <i>Queen of the Gypsies</i>	1 25	8 00
8524 <i>Queen of the May</i>	1 30	8 75
8525 <i>Rhein Nixe</i>		
8526 <i>Speciosa</i>		
8529 <i>Bearded Iris Mixed</i>		

JAPANESE IRIS

8535 <i>Distinction</i>	2 75	20 00
8537 <i>Gold Bound</i>	1 95	15 00
8540 <i>Mount Hood</i>	1 90	14 00
8543 <i>Pyramid</i>	1 90	14 00
8544 <i>Red Riding Hood</i>	2 35	17 00
8546 <i>T. S. Ware</i>	1 90	14 00
8547 <i>Victor</i>	2 20	16 50
8548 <i>Seedlings of Japanese Iris</i> (1000 for \$50.00)	85	5 25

SIBERIAN IRIS

	Doz.	Per 100
8551 <i>Blue King</i>	\$1 60	\$11 00
8555 <i>Purple</i>	1 25	10 00
8559 <i>Snow Queen</i>	1 60	11 00
8949 <i>Ismene Calathina</i>	1 45	10 00

HARDY LILIES

	Each	Doz.
8603 <i>Canadian Lily (Canadense)</i>	\$0 20	\$1 95
8604 <i>Candlestick Lily (Dauricum)</i>	20	1 75
8607 <i>Crimson Show Lily (Speciosum Mel-pomene)</i>	30	2 75
8610 <i>Double Tiger Lily (Tigrinum flore pleno)</i>	20	1 95
8612 <i>Easter Lily (Longiflorum giganteum)</i>	30	2 75
8616 <i>Giant Tiger Lily (Tigrinum fortunei giganteum)</i>	25	2 25
8619 <i>Golden Banded Lily of Japan (Auratatum)</i>	25	2 45
8631 <i>Royal Lily (Regale)</i>	85	8 00
8634 <i>Show Lily (Speciosum rubrum)</i>	30	2 95
8638 <i>Swamp Lily (Superbum)</i>	20	1 75
8644 <i>Turk's Cap Lily (Batemanniae)</i>	25	2 35
8653 <i>Yellow Japanese Lily (Hansonii)</i>	60	5 50
8654 <i>Yellow Show Lily (Henryi)</i>	60	5 60

Per Doz. 100

8955 Lily-of-the-Valley	\$4 25	\$32 50
8961 Madeira Vine (<i>Boussingaultia</i>).....	70	4 50
8963 Montbretias , Mixed.....	70	4 75
8970 Oxalis <i>Deppei</i>(1000 for \$9.00)	15	95
8972 " <i>Lasiandra</i> (1000 for \$9.00)	15	95
8975 " <i>Shamrock (Deppei Rosea)</i> (1000 for \$9.00)	15	95

PEONIES

	Each	Doz.
8701 <i>Crown of Gold</i>	\$0 50	\$4 50
8705 <i>Duchesse de Nemours</i>	40	3 60
8706 <i>Eduis Superba</i>	40	3 60
8709 <i>Felix Crousse</i>	50	4 50
8713 <i>Festiva Maxima</i>	35	3 40
8722 <i>Umbellata Rosea</i>	55	4 75
8724 <i>Venus</i>	65	6 00

HARDY PHLOX

	Doz.	Per 100
8751 <i>Beacon</i>	\$1 60	\$11 00
8752 <i>Champs Elysees</i>	1 60	11 00
8755 <i>Eclairer</i>	1 60	11 00
8757 <i>Elizabeth Campbell</i>	2 75	20 00
8759 <i>Europa</i>	1 60	11 00
8774 <i>Mrs. William Jenkins</i>	1 60	11 00
8778 <i>Rynstrom</i>	1 60	11 00
8781 <i>Sunshine</i>	1 60	11 00
8786 <i>W. C. Egan</i>	2 10	15 00
8986 <i>Tritoma (Kniphofia) Pfitzeri</i>	2 15	16 00
8984 " <i>Early Perpetual-Flow-ering</i>	2 20	16 50
8988 Tuberose , <i>Excelsior Pearl</i> , First Size.....	60	4 00
8989 " <i>Excelsior Pearl</i> , Mam-moth Bulbs.....	90	6 00

Burpee's Ready-Made Collections of Vegetable and Flower Seeds

The collections listed in BURPEE'S ANNUAL FOR 1923 are intended primarily for the amateur, but are occasionally ordered by the commercial grower for his wife or to fill in the odd corner of the garden patch.

To Market Gardeners, Garden Clubs, and Florists, we offer them at a special discount of 15% and, when twelve or more of a single collection are ordered, at a discount of 20%.

These discounts apply also to the special bulb assortments offered in BURPEE'S ANNUAL, when ordered in straight sets.

Burpee's Dahlias

Dahlias have for many years been a specialty with Burpee. We are growing a very extensive list of varieties on our Fordhook Farms in Pennsylvania. Our trials rank among the most complete in this country. Neither time nor money is spared in order to test even the most expensive new varieties for the purpose of determining their value to our customers. It is really a trip worth-while to Fordhook Farms to see our Dahlia fields in full bloom. We have issued a special 16-page Dahlia Catalog giving complete descriptions of all the many varieties which we can offer. Write today for a free copy of Burpee's Special Dahlia Catalog.



Minnie Burgle

*Greatly reduced
from a
photograph*

DECORATIVE

This type produces large double flowers which are full to the very center. All varieties are free-blooming, having broad, loosely arranged floral rays.

	3 Roots	12 Roots
8109 Delice A lovely shade of glowing rose-pink.....	\$0 70	\$2 45
8111 Dr. Tevis Beautiful salmon-rose suffused with old gold and apricot	1 95	7 15
8127 Hazel Welton Reddish bronze with a silvery sheen.....	3 90	14 25
8132 Hortulanus Fiet Color rich salmon, suffused amber and yellow..	1 45	5 25
8142 Jan Olieslagers Enormous flowers of rich buttery yellow.....	70	2 45
8143 Jean Kerr The most valuable of all white Decorative Dahlias.....	1 45	5 25
8144 Jeanne Charmet An exquisite lilac-pink shading white.....	70	2 45
8149 King of the Autumn Color buff-yellow, suffused terra-cotta; very beautiful in color and form....	1 95	7 15
8150 Lyndhurst Striking vermilion-scarlet flowers.....	45	1 50
8155 Millionaire A clear lavender shading to white.....	2 50	9 00
8156 Minnie Burgle The best red Dahlia in existence.....	1 00	3 40
8157 Minnie McCullough Soft golden yellow tipped bronzy red.....	45	1 50
8161 Mrs. I. De Ver Warner An immense flower of a pleasing shade of mauve-pink..... (\$7.50 each)	—	—
8170 Paul Bonyon Apricot-orange with a tinge of yellow at the base....	1 95	7 15
8177 Princess Pat A most beautiful shade of old rose.....	2 50	9 00
8180 Purple King Attractive Phlox-purple flowers of large size.....	70	2 45
8183 Quaker Maid Bright amaranth-pink; lighter toward the tips....	1 95	7 15
8186 Rosa Nell Clear bright rose; flowers of beautiful form (\$4.00 each)	10 00	—
8193 Sylvia Rich pink, tinting to light pink in the center.....	45	1 50

POMPON DAHLIAS

These make neat little bushes which are covered with small, perfectly ball-shaped flowers.

	3 Roots	12 Roots
8273 Adrienne Rich crimson-scarlet slightly tipped yellow.....	\$0 45	\$1 50
8274 Bacchus A very bright crimson-scarlet flower.....	45	1 50
8285 Neatness Pale salmon with a cream center.....	45	1 50
8288 Queen of Whites A very free-flowering pure white.....	45	1 50
8289 Rosa This is a rich shade of deep rose.....	45	1 50

STAR DAHLIAS

This beautiful single-flowering type blooms very freely and is quickly becoming very fashionable.

	3 Roots	12 Roots
8294 Crawley Star The broad petals are a rich crimson.....	\$1 00	\$3 40
8296 Northern Star A distinct shade of deep satiny rose.....	1 45	5 25
8297 Orange Star A beautiful shade of deep orange.....	1 45	5 25
8299 White Star An attractive little flower with pure white petals....	1 00	3 40
8292 TRIAL GROUND MIX-TURE	30	1 00



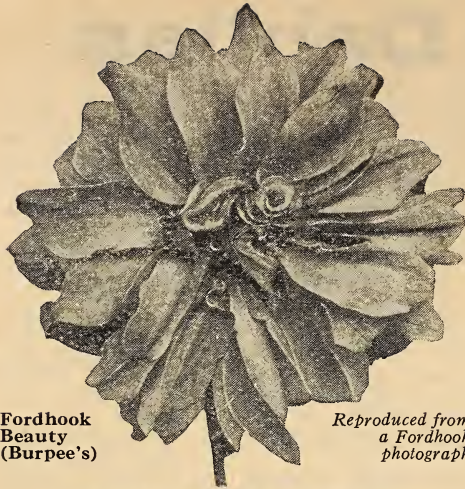
*The picture is
reproduced from a
Fordhook photograph*

Collarette Dahlia—
Maurice Revoire

COLLARETTE DAHLIAS

In this type we find an extra row of twisted petals inserted in collar fashion between the center and outer ray petals. The contrast of color makes the collar most prominent and gives the whole flowers a most striking appearance. COLLARETTE DAHLIAS have become very popular for cutting within recent years.

	3 Roots	12 Roots
8085 Frogmore Orange-scarlet tipped with yellow; canary-yellow collar	\$0 70	\$2 45
8087 Maurice Revoire Deep crimson with large white collar.....	70	2 45
8091 Queen Anne Glowing scarlet tipped with yellow; pure yellow collar...	45	1 50
8094 Collarette Mixed	45	1 35



Fordhook Beauty (Burpee's)

Reproduced from a Fordhook photograph



Marjorie Castleton

From a photograph taken on Fordhook Farms

CACTUS DAHLIAS

A well-known type of Dahlia with long and narrow petals which in some varieties are much incurved or twisted.

PEONY-FLOWERED

This type of Dahlia is very popular on account of its artistic effect. The petals are broad and bold and in many varieties curled and twisted, usually covering the small yellow center.

	3		12	
	Roots		Roots	
8202 Alice A pleasing shade of light yellow; large flowers borne freely . . .	\$1 45	\$5 25		
8205 Autumn Beauty A combination of yellow, buff and light rose . . .	1 45	5 25		
8209 Cecelia Extra large flowers of light canary-yellow . . .	1 45	5 25		
8213 Coppersmith Light copper or bronze with a metallic suffusion . . .	1 45	5 25		
8214 Dainty Queen Rosy lavender flowers shading to white toward the center . . .	1 45	5 25		
8220 Fordhook Beauty Bronzy red suffused with salmon and amber . . .	70	2 45		
8222 Fordhook Cerise A brilliant shade of rich cerise tinted orange . . .	1 45	5 25		
8223 Fordhook Cream Light cream with a yellow suffusion; free-flowering . . .	70	2 45		
8226 Fordhook Gem A large flower of an attractive rosy pink . . .	2 50	9 00		
8229 Fordhook Lilac A flower of immense size and exquisite form. The color is a clear shining lilac . . .	10 00	—		
8237 Fordhook White Pure white petals curling over the yellow center . . .	45	1 50		
8240 Golden Rose Yellow flowers suffused with rich rose; blooms very freely . . .	70	2 45		
8244 H. J. Lovink White, flushed light lilac; of perfect form . . .	70	2 45		
8245 Hortulanus Budde Clear orange-scarlet; an excellent flower . . .	70	2 45		
8247 John D. Rockefeller Flowers of a pleasing shade of salmon-buff . . .	85	3 00		
8248 Lemon Queen The flowers are a rich shade of lemon-yellow . . .	70	2 45		
8250 Lilac Gem A beautiful novelty with large rosy purple flowers . . .	1 95	7 15		
8252 Mme. Von Bystein A soft tint of mauve; lighter on the edges . . .	85	3 00		
8256 Mrs. G. W. Kerr A rich plum shade, tinted lavender on the tips . . .	1 00	3 40		
8259 Mrs. John Gribbel Light salmon-pink, flushed amber and salmon . . .	1 00	3 40		
8261 Mrs. W. E. Whineray The flowers are rose, suffused clear yellow . . .	85	3 00		
8263 Orient A combination of orange-scarlet flaked with bright yellow . . .	85	3 00		
8266 Queen Elizabeth Clear bright pink; of perfect habit . . .	1 95	7 15		
8267 Romolo Piazzani Golden salmon and rosy amber . . .	1 00	3 40		
8269 Rose Marie A clear and pleasing shade of rose . . .	1 95	7 15		
8271 The Bride White, suffused with a delicate blush tint . . .	1 00	3 40		
8272 Peony-Flowered Mixed . . .	30	1 00		
8014 Edith Carter Beautiful bright yellow, suffused rosy carmine . . .	\$1 00	\$3 40		
8015 E. F. Hawes A lovely shade of clear salmon-pink . . .	70	2 45		
8018 Fred. Wenham Color a warm shade of fawn-pink with soft salmon in the center . . .	1 45	5 25		
8019 F. W. Fellows An appealing bright orange-scarlet flower . . .	1 45	5 25		
8020 Geo. Schofield Yellow, deepening to apricot with white tips . . .	1 45	5 25		
8021 George Walters Salmon-pink flowers shading to yellow at the base . . .	1 45	5 25		
8023 Glory of Wilts One of the best yellow varieties . . .	70	2 45		
8027 H. L. Brousson Rich rose flowers with a white center . . .	1 00	3 40		
8028 Homer A deep yet bright and rich maroon . . .	1 00	3 40		
8032 Irresistible Yellow, heavily suffused with rose . . .	1 00	3 40		
8033 Jenny Wren A charming shade of bright yellow, suffused with pink . . .	70	2 45		
8036 John Riding Large flowers of a deep rich crimson . . .	1 00	3 40		
8042 Lawine Well-shaped white blooms suffused blush . . .	70	2 45		
8044 Marjorie Castleton Rich rose-pink tinted with lilac toward the center and tips . . .	70	2 45		
8045 Mary Purrier A magnificent variety with rich scarlet flowers . . .	1 45	5 25		
8047 Melody Clear yellow on the lower half; pure white at the tips . . .	1 00	3 40		
8049 Mrs. A. C. James Rich salmon-buff with a suffusion of yellow . . .	2 50	9 00		
8050 Mrs. Edna Spencer A delicate shade of Orchid-pink . . .	1 95	7 15		
8058 Mrs. W. E. Estes Clear pure white flowers of remarkable form . . .	2 50	9 00		
8063 Pierrot Deep amber tipped with pure white and shaded bright yellow . . .	1 15	4 15		
8064 Red Cross A combination of red and yellow . . .	2 50	9 00		
8066 Rosa Bonheur A rich dark scarlet Hybrid Cactus . . .	1 95	7 15		
8069 Ruth C. Gleadell Soft yellow shading to apricot-bronze . . .	1 95	7 15		
8072 Sovereignty Large flowers of a rich deep shade of pure yellow . . .	1 45	5 25		
8074 Starlight Rich deep yellow, lightening to pale lemon and white at the tips . . .	1 45	5 25		
8075 Success A remarkably free-blooming clear yellow . . .	70	2 45		
8076 The Quaker Large white flowers, tinted flesh-pink . . .	85	3 00		

BURPEE'S SEEDS

The Best Seeds that Grow

FOR nearly fifty years Burpee's Seeds have set the standard by which all other seeds have been judged. Year in and year out Burpee's Seeds have been safe and dependable—always of the highest quality it has been possible to produce.

Such a record for reliability can be established and maintained only by constant attention to every detail, expert knowledge, and careful trials and tests. The whole Burpee Business—its organization and its policy—is built upon the one fundamental principle, the **Reliability of Burpee's Seeds**.

By far the greater part of Burpee's Seeds are selected and grown right on the Burpee Farms, in various parts of the United States—a greater proportion than that grown by any other American seedsman. And those not produced on our own Farms are grown by tried and experienced men under our direct supervision.

Burpee's Fordhook Farms

The largest and most complete trial grounds in America are located near Doylestown, Bucks County, Pennsylvania. It is at Fordhook Farms that we test and prove the quality, the vitality and purity, of every lot of seed sold by the House of Burpee. Each year over 15,000 germination tests are made in the greenhouses at Fordhook, and over 7,000 purity trials in the open trial grounds, in addition to the numerous plantings for stock seed selection. Here also are acres of Tomatoes, Phlox, Poppies, Salvia, Zinnia and many other Vegetable and Flower Seed crops.

Burpee's Sunnybrook Farm

The warm soils of Gloucester County, New Jersey, are particularly well adapted for the growing of some of the more tender crops. At Sunnybrook Farms we grow seed of Peppers, Egg Plants, Melons, and Cucumbers and the famous Sunnybrook strain of Earliana Tomato, as well as many other Vegetables and choice Flower seeds. And at Sunnybrook Farm we make our purity trials of Melons, Squashes, Pumpkins and other Vine crops.

Burpee's Floradale Farms

The many acres of this California Home of Flowers are devoted to the growing of selected stocks of the finest varieties of Flower seeds. For its Sweet Peas alone it is famous the world over. Alyssum, Snapdragon, Larkspurs, Calendulas, Marigolds and others, too numerous to mention, grow to perfection in the fertile climate of sunny Santa Barbara County. A visit to Floradale Farms when the Sweet Peas and other Flowers are in bloom is worth a trip across the continent.

W. Atlee Burpee Co.
Seed Growers Philadelphia

Burpee's

BLUE LIST



1923
WHOLESALE PRICES
For Market Growers
and Florists

W. Atlee Burpee Co.
Wholesale Department
Seed Growers Philadelphia