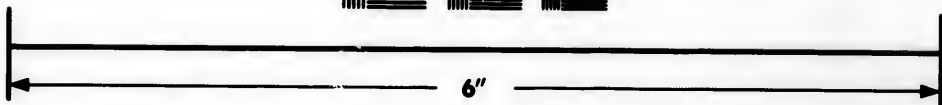
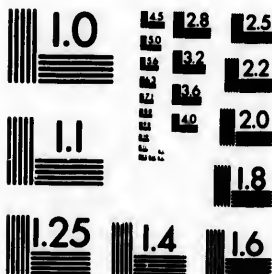


**IMAGE EVALUATION  
TEST TARGET (MT-3)**



**Photographic  
Sciences  
Corporation**

23 WEST MAIN STREET  
WEBSTER, N.Y. 14590  
(716) 872-4503

**CIHM/ICMH  
Microfiche  
Series.**

**CIHM/ICMH  
Collection de  
microfiches.**



**Canadian Institute for Historical Microreproductions / Institut canadien de microreproductions historiques**

**© 1983**

Technical and Bibliographic Notes/Notes techniques et bibliographiques

The Institute has attempted to obtain the best original copy available for filming. Features of this copy which may be bibliographically unique, which may alter any of the images in the reproduction, or which may significantly change the usual method of filming, are checked below.

L'institut a microfilmé le meilleur exemplaire qu'il lui a été possible de se procurer. Les détails de cet exemplaire qui sont peut-être uniques du point de vue bibliographique, qui peuvent modifier une image reproduite, ou qui peuvent exiger une modification dans la méthode normale de filmage sont indiqués ci-dessous.

- Coloured covers/  
Couverture de couleur
- Covers damaged/  
Couverture endommagée
- Covers restored and/or laminated/  
Couverture restaurée et/ou pelliculée
- Cover title missing/  
Le titre de couverture manque
- Coloured maps/  
Cartes géographiques en couleur
- Coloured ink (i.e. other than blue or black)/  
Encre de couleur (i.e. autre que bleue ou noire)
- Coloured plates and/or illustrations/  
Planches et/ou illustrations en couleur
- Bound with other material/  
Relié avec d'autres documents
- Tight binding may cause shadows or distortion along interior margin/  
La reliure serrée peut causer de l'ombre ou de la distortion le long de la marge intérieure
- Blank leaves added during restoration may appear within the text. Whenever possible, these have been omitted from filming/  
Il se peut que certaines pages blanches ajoutées lors d'une restauration apparaissent dans le texte, mais, lorsque cela était possible, ces pages n'ont pas été filmées.
- Additional comments:  
Commentaires supplémentaires:

- Coloured pages/  
Pages de couleur
- Pages damaged/  
Pages endommagées
- Pages restored and/or laminated/  
Pages restaurées et/ou pelliculées
- Pages discoloured, stained or foxed/  
Pages décolorées, tachetées ou piquées
- Pages detached/  
Pages détachées
- Showthrough/  
Transparence
- Quality of print varies/  
Qualité inégale de l'impression
- Includes supplementary material/  
Comprend du matériel supplémentaire
- Only edition available/  
Seule édition disponible
- Pages wholly or partially obscured by errata slips, tissues, etc., have been refilmed to ensure the best possible image/  
Les pages totalement ou partiellement obscurcies par un feuillet d'errata, une pelure, etc., ont été filmées à nouveau de façon à obtenir la meilleure image possible.

This item is filmed at the reduction ratio checked below/  
Ce document est filmé au taux de réduction indiqué ci-dessous.

10X	14X	18X	22X	26X	30X	
<input type="checkbox"/>	<input type="checkbox"/>	<input checked="" type="checkbox"/>	<input type="checkbox"/>	<input type="checkbox"/>	<input type="checkbox"/>	
	12X	16X	20X	24X	28X	32X

The copy filmed here has been reproduced thanks to the generosity of:

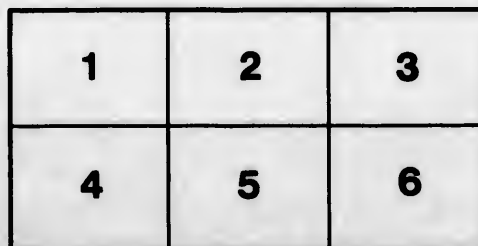
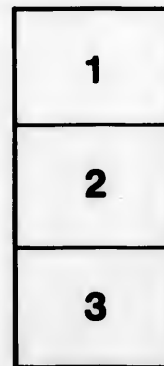
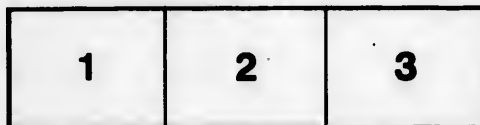
Library of the Public  
Archives of Canada

The images appearing here are the best quality possible considering the condition and legibility of the original copy and in keeping with the filming contract specifications.

Original copies in printed paper covers are filmed beginning with the front cover and ending on the last page with a printed or illustrated impression, or the back cover when appropriate. All other original copies are filmed beginning on the first page with a printed or illustrated impression, and ending on the last page with a printed or illustrated impression.

The last recorded frame on each microfiche shall contain the symbol  $\rightarrow$  (meaning "CONTINUED"), or the symbol  $\nabla$  (meaning "END"), whichever applies.

Maps, plates, charts, etc., may be filmed at different reduction ratios. Those too large to be entirely included in one exposure are filmed beginning in the upper left hand corner, left to right and top to bottom, as many frames as required. The following diagrams illustrate the method:



L'exemplaire filmé fut reproduit grâce à la générosité de:

La bibliothèque des Archives  
publiques du Canada

Les images suivantes ont été reproduites avec le plus grand soin, compte tenu de la condition et de la netteté de l'exemplaire filmé, et en conformité avec les conditions du contrat de filmage.

Les exemplaires originaux dont la couverture en papier est imprimée sont filmés en commençant par le premier plat et en terminant soit par la dernière page qui comporte une empreinte d'impression ou d'illustration, soit par le second plat, selon le cas. Tous les autres exemplaires originaux sont filmés en commençant par la première page qui comporte une empreinte d'impression ou d'illustration et en terminant par la dernière page qui comporte une telle empreinte.

Un des symboles suivants apparaîtra sur la dernière image de chaque microfiche, selon le cas: le symbole  $\rightarrow$  signifie "A SUIVRE", le symbole  $\nabla$  signifie "FIN".

Les cartes, planches, tableaux, etc., peuvent être filmés à des taux de réduction différents. Lorsque le document est trop grand pour être reproduit en un seul cliché, il est filmé à partir de l'angle supérieur gauche, de gauche à droite, et de haut en bas, en prenant le nombre d'images nécessaire. Les diagrammes suivants illustrent la méthode.

**A**

Being

*But*

Besi  
Pr

THE  
**NEW-BRUNSWICK**  
**ALMANACK,**

FOR THE YEAR OF OUR LORD

**1834:** 35 38

Being the Fourth of the Reign of His Most Gracious Majesty

**WILLIAM IV.**

*And the Second after Bissextile, or Leap Year,*

CALCULATED FOR THE MERIDIAN OF

**SAINT JOHN,**

*But will serve for any other part of the Province.*

—CONTAINING—

Beside the usual Astronomical Calculations,—Register of  
Provincial Officers,—Sittings of the different Courts,—  
and a variety of useful and amusing matter,

A CORRECTED LIST OF

**MILITIA OFFICERS**

WITHIN THE PROVINCE.



**SAINT JOHN:**

PRINTED BY HENRY CHUBB, AND SOLD AT THE  
COURIER OFFICE, MARKET-SQUARE.

# Eclipses in the Year 1834.

(From the Nova-Scotia Almanack.)

During the year 1834, there will be Five Eclipses, which will happen in the following order:

The first will be of the Sun, on Thursday, the 9th day of January, but invisible here, as it will happen after that luminary has set.

The second will be an eclipse of the Sun, on Saturday, June 7th, and visible here:

Sun rises	- - -	4 h. 26 min.	} In the Morning.
Beginning of Eclipse,	- 5 h. 15 "		
Middle,	- 5 h. 42 "		
End,	- 6 h. 27 "		

There will be about 1½ digits eclipsed on the Sun's southern limb.

The third will be an eclipse of the Moon, on Saturday, June 21st, visible here, and total:

Moon rises	20th day,	7 h. 43 min.	Evening.
Beginning	21st day,	2 h. 48 "	} In the Morning.
Middle	- - -	4 h. 9 "	
End of the Eclipse,	- 5 h. 49 "		

The fourth will be of the Sun, on Sunday, November 30th, and visible here:

Beginning	- - -	1 h. 52 min.	} In the Afternoon.
Middle	- - -	2 h. 33 "	
End	- - -	2 h. 54 "	

One Digit will be eclipsed on the Sun's northern limb.

The fifth will be an eclipse of the Moon, on Monday, December 15th, and will be visible:

Moon rises	- - -	7 h. 37 min.	} In the Evening.
Beginning of eclipse,	10 h. 44 "		
Middle [16th day]	0 h. 41 "		} In the Morning.
End	- - -	2 h. 51 "	

About eight digits will be eclipsed on the Moon's southern limb.

## OCCIDENTAL AND ORIENTAL STARS.

Venus will be a Morning Star until February 19th; then an Evening Star till December 20th; then a Morning Star.

Jupiter will be an Evening Star until May 9th; then a Morning Star throughout the year.

Mars will be a Morning Star until December 24th; and for the remainder of the year an Evening Star.

## Names and Characters of the Planets.

☉	☽	The Sun.	♂	Mars.
☾	☾	The Moon.	♃	Jupiter.
☿	♀	Mercury. ♀ Venus.	♄	Saturn.
♁		The Earth.	♁	Herschell.

Names

☿ A  
♁ T  
♁ G  
♁ C  
♁ L  
♁ V

Names

♁ Co  
\* Sex  
♁ Qu  
♁ Tri

Golden  
Epa  
Domi  
Julian

MO

Septuages  
Sexagesim  
Quinquag  
Shrove  
Ash Wed  
day o  
First Sun  
Mid Lent  
Palm Sun

Februar  
May

1st Janu  
17th Mar  
28th Mar  
31st Mar  
1st Apr  
23d Apr  
19th May

## Names and Characters of the Signs of the Zodiac.

♈ Aries, head.	♎ Libra, reins.
♉ Taurus, neck.	♏ Scorpio, secrets.
♊ Gemini, arms.	♐ Sagittarius, thighs.
♋ Cancer, breast.	♑ Capricornus, knees.
♌ Leo, heart.	♒ Acquarius, legs.
♍ Virgo, belly.	♓ Pisces, feet.

## Names and Characters of the Aspects and Nodes.

♁ Conjunction.	Vc Quincunx, 120 degrees.
* Sextile, 60 degrees.	♁ Opposition, 180 degrees.
□ Quartile, 90 degrees.	♁ Ascending Node.
△ Trine, 120 degrees.	♁ Descending Node.

## CHRONOLOGICAL CYCLES FOR 1834.

Golden Number, - 11	Cycle of the Sun, 28
Epact, - 20	Roman Indiction, 7
Dominical Letter, - E	Anno Mundi, - 5841
Julian Period, - 6547	Number of Direction, 3

## MOVEABLE FESTIVALS OF THE CHURCH.

Septuagesima Sunday, Jan. 26	<i>Easter Day,</i> March 30
Sexagesima Sunday, Feb. 2	Low Sunday, April 6
Quinquagesima, or } Feb. 9	Rogation Sunday, May 4
Shrove Sunday, }	Ascension Day, or Holy
Ash Wednesday, first } Feb. 12	Thursday, - May 8
day of Lent, }	Whit Sunday, or Pente-
First Sunday in Lent, Feb. 16	cost, - May 18
Mid Lent Sunday, March 9	Trinity Sunday, May 25
Palm Sunday, March 23	Advent Sunday, Nov. 30

## EMBER DAYS.

February 19th, 21st, and 22d.	September 17th, 19th, and 20th.
May 21st, 23d, and 24th.	December 17th, 19th, and 20th.

## HOLIDAYS AT THE PUBLIC OFFICES.

1st January, New-Year's Day.	20th May, Whit Tuesday.
17th March, Saint Patrick.	28th May, King's birth day kept.
28th March, Good Friday.	13th August, Queen's birth day kept.
31st March, Easter Monday.	5th November, Gunpowder Plot.
1st April, Easter Tuesday.	30th November, Saint Andrew.
23d April, Saint George	25th December, Christmas Day.
19th May, Whit Monday.	



# LIGHT HOUSES.

*Commissioners for Light Houses in the Bay of Fundy :*

Charles Simonds, Robert W. Crookshank, Allen Otty, Thomas Barlow,  
and John Ward, junior, Esquires.

**Cape Sable Seal Island Light.**—The first Light in approaching the Bay of Fundy, is on the South Point of the Seal Island. This Light is elevated about 80 feet above high water mark, and may be seen in approaching the Island from any point of the Compass. A very dangerous Rock, under water, but upon which the sea always breaks, called the Blonde Rock, lies about 2 miles, S. S. W. by Compass, from the Light House. Between this rock and the Island, there are some dangers, the ground is rocky throughout, and large vessels therefore ought not to attempt passing between them.

**Bryer Island Light.**—In advancing up the Bay, the next Light is situated on Bryer Island, about a half a mile N. E. from the N. W. Point thereof, with an improved Lantern and Lamp; this light will therefore be much more beneficial to the trade of the Bay than formerly.

**Annapolis Gut Light.**—The next Light on the coast of Nova Scotia is placed at the West side of the Gut of Annapolis; from Bryer Island North Eastward; this coast is very bold, and not indented; this light is therefore chiefly intended as a guide into Annapolis Basin.

**Gannet Rock Light**—This Light bears from the Light on Bryer Island N. W.  $\frac{1}{2}$  W. 21 miles. It is intended to warn ships of their approach to a very dangerous range of Shoals and Ledges, which extend from the Old Proprietor to the Seal Island off Machias, a distance of about 20 miles.

### *Bearings from the Gannet Rock Light House.*

- To the Old Proprietor, which dries at  $\frac{1}{2}$  ebb (very dangerous) E. by N.  $\frac{1}{4}$  N. 7 miles.
- “ Black Rock, (always above water 25 feet) off White Head, N. E.  $\frac{1}{4}$  E.
- “ South West end of Grand Manan, N. W.  $\frac{1}{2}$  N.
- “ Northernmost of the Murr Ledges, dry at  $\frac{1}{2}$  ebb, N. W. by W.  $\frac{1}{4}$  W.
- “ To the Southernmost of ditto, called St Mary’s Ledge, always out of water, S. W. by W.  $\frac{1}{2}$  W.
- “ Machias Seal Island Lights, distant about 13 miles, W. by N.  $\frac{1}{4}$  N.

**NOTE.**—Between the northernmost and southernmost of the Murr Ledges, there is a range of dangerous rocks and shoals, many of them always above water, and which extend westward from the Light House about 4 miles; from this range, farther westerly, about 3 miles, lies a dangerous breaker, called the Roaring Bull. This may be avoided by keeping three remarkable headlands near the S. W. end of Grand Manan open. The red glass having been removed from the lantern, this light is now a bright white one.

*Head P*  
is Head P  
Campo B  
West Isles  
bles vessel

*Point A*  
Lights hav  
Both light  
may be us

*Partric*  
and Harbo  
requires n

*Beacon*  
which ext  
dries at  $\frac{1}{2}$   
established  
and to all  
ter the Ha

*West G*  
the West  
a new lig  
proved.

Two fix  
ration in  
water, and  
200 feet,  
er Lights  
bearings

To the  
“ G  
“ S  
“ N  
“ M  
“ I  
“ I

Vessels  
the Ganne  
lights in c  
from the

The C  
the 30th  
Low Poi  
finished o  
month.  
the harbo

*A Wh*  
Louisbour  
which ma

**Head Harbour Light.**—Next in order, after passing Grand Manan, is Head Harbour Light. This is placed on the N. E. extremity of Campo Bello, and is a guide to vessels entering the main channel to West Isles, Moose Island, and the inner Bay of Passamaquoddy; it enables vessels also at all times to enter Head Harbour.

**Point Le Preau Lights.**—Upon this projecting Head Land, two Lights have lately been placed, one above the other, and distant 18 feet. Both lights may be seen from every point of the Compass, where they may be useful.

**Partridge Island Light.**—This Light at the entrance of the River, and Harbour of St John, having been established upwards of 40 years, requires no particular notice.

**Beacon Light.**—Within Partridge Island, and upon a spit or bar, which extends about half a mile, S. S. E. of Sand Point, and which dries at  $\frac{3}{4}$  ebb, stands the Beacon Tower. Upon this Tower a Light is established, which is eminently useful to the coasting trade of St. John, and to all other vessels having Pilots on board, as it enables them to enter the Harbour of St John at all hours of the night.

**West Quoddy Light.**—This is an American Light, and is placed on the West side of the entrance into the St Croix by Lubec and Eastport; a new light house has lately been erected here, and the light much improved.

Two fixed Lights, upon the Machias Seal Island, were put into operation in October 1832—they are elevated about 45 feet above high-water, and bear from each other E. S. E. and W. N. W. distant about 200 feet, by which they will be immediately distinguished from all other Lights upon the Coast (British or American)—the following are bearings from them, viz :

- To the Southernmost Murr Ledge, (St Mary's,) E. S. E. easterly.
- “ Gannet Rock Light, E. by S.  $\frac{1}{4}$  S. 13 miles.
- “ Southern head of Grand Manan, E. by N.  $\frac{1}{2}$  N.
- “ Northern ditto, N. E.  $\frac{1}{4}$  E.
- “ N. E. Rock, distant 2 miles, N. E. by N.
- “ Little River Head, N. by W.
- “ Libby Island Light House, [American] N. W. by W.

Vessels in standing in to the Northward, between these Lights and the Gannet Rock, should tack or haul off the moment they bring these lights in one, as they will then not be more than  $\frac{1}{4}$  fourths of a mile from the Murr Ledges, if more than 5 miles to the S. of the lights.



The Commissioners of Light Houses for Nova Scotia, under date of the 30th October, 1832, gave notice, that the Light House building on Low Point, at the entrance of Sydney Harbour, Cape Breton, would be finished on the 1st November, and lighted on or about the 15th of that month. It would be a fixed Light on the East point of the entrance of the harbour.

A *White Beacon* has been erected on the East Head, leading into Louisbourg Harbour, upon the site of the old French Light House—which may be seen at a very considerable distance.

**GEOGRAPHICAL POSITION OF HEADLANDS, &c.**  
 ON THE COAST OF NORTH AMERICA,  
*Determined on the spot by Astronomical Observations.*

PLACE OF OBSERVATION.	LATITUDE North	Longitude West of Greenwich
Saint John, N. B. ....	45 15 0	66 6 19
Partridge Island Light House, ...	45 13 36	
Beaver Harbour, South West } ...	45 3 12	66 47 29
Point of the entrance, } ...		
Navy Island, South East Point, ...	45 2 24	67 5 47
Bliss' Island, South West Point, } ...	45 0 15	66 54 27
L'Etang Harbour, } ...		
Head Harbour Light H., Campo Bello, ...	44 56 50	66 56 59
Grand Manan, North Point, ...	44 46 49	66 49 7
Ditto, Swallow-tail Point, ...	44 44 54	66 47 21
Ditto, White-Head Island, ...	44 36 59	66 45 4
Brier's Island Light House, ...	44 13 51	66 26 54
Digby Light House, ...	44 40 25	65 50 15
HALIFAX, Naval Yard, (Meridian) ...	44 39 26	63 37 48
Green Island, Country Harbor, S. Point, ...	45 4 55	61 34 49
Canso Light House, ...	45 19 33	60 58 30
Eddy Point, Gut of Canso, ...	45 30 25	61 16 54
Pictou Island, South side, ...	45 47 52	62 37 33
Pictou Harbour, ...	45 41 56	62 42 0
Liverpool Light House, ...	44 1 52	64 40 49
Western Head, Liverpool Bay, ...	43 59 13	64 42 34
Long projecting Point between Rugged Island Harbour and Green Harbour, ...	43 39 40	65 11 29
Shelburne Light House, ...	43 37 31	65 19 40
Sandy Point, Shelburne Harbour, ...	43 41 57	65 22 11
Cape Sable, South Point, ...	43 23 57	65 38 3
South Seal Island, South Point, ...	43 23 51	65 59 42
Ditto, North Point, ...	43 26 22	66 1 38
Sable Island, East end, ...	43 59 15	59 48 17
Ditto, West end, ...	43 56 30	60 13 34
Louisburg, Ruins of the old Light-house, ...	45 53 31	59 59 49
Cape Breton, extreme Point, ...	45 56 26	59 50 15
City of Quebec, ...	46 48 30	71 16 25
Saint Paul's Island, ...	47 12 38	60 11 24
Cape Gaspe, South East Point, ...	48 45 14	64 13 38
Anticosti, West Point, ...	49 52 29	64 36 54
Magdalen Island, North East Point, ...	47 37 37	61 26 51
Prince Edward Island, West Point, ...	46 37 43	64 24 21
Saint John's, (N. F.) Fort Townshend, ...	47 33 33	52 45 10
Dock Yard, Bermuda, ...	32 19 1	64 54 18

Another Y  
 Its wing  
 'Tis come  
 Swift as

Last Qr.-2  
 New Moo  
 First Qr.

D. M.	D. W.	
1	We	C
2	Th	E
3	Fri	
4	Sat	
5	SU	
6	Mo	
7	Tu	
8	We	
9	Th	
10	Fri	
11	Sat	
12	SU	
13	Mo	
14	Tu	
15	We	
16	Th	
17	Fri	
18	Sat	
19	SU	
20	Mo	
21	Tu	
22	We	
23	Th	
24	Fri	
25	Sat	
26	SU	
27	Mo	
28	Tu	
29	We	
30	Th	
31	Fri	

# JANUARY HAS XXXI DAYS.

## THE NEW YEAR.

Another Year! 'aye, Reader, true, Its winged steps are past; 'Tis come and gone, to me and you, Swift as the passing blast!	Incessant Time, that onward flies, Has wound its circle in the skies, And added to the many there, Another in the viewless air.
--	--

### MOON'S PHASES.

Last Qr. 2d day, 11h 33m morn. New Moon 9th day, 6h 31m eve. First Qr. 17th day, 10h 4m eve.	Full Moon, 25th day, 5h 33m morn. Last Quarter 31st day, 8h 35m evening.
--	---

D.	D. M.	D. W.	CALENDAR, &c.	☺		☉		R. S.	☽	Plac.	High water
				R. & S.	h. m. h.	dec. S	& S.				
1	66	6	19	We	Circumcision. <i>Fine</i>	7 39	5 23	1 11	29	belly	3 1
2	66	47	29	Th	Burke born, 1730.	7 39	5 22	56	Morn	rein.	3 56
3	67	5	47	Fri	<i>seasonable weather.</i>	7 37	5 22	50	0 42	rein.	5 6
4	66	54	27	Sat	Low tides.	7 37	5 22	44	1 55	secr.	6 23
5	66	56	59	SU	2d Sun after Christmas	7 36	5 22	37	3 6	secr.	7 38
6	66	49	7	Mo	Epiphany. <i>Signs of</i>	7 35	5 22	30	4 17	thi.	8 43
7	66	47	21	Tu	7 stars so. 8h 24m	7 35	5 22	23	5 25	thi.	9 36
8	66	45	4	We	Lucian. <i>snow.</i>	7 34	5 22	15	6 28	knee	10 20
9	66	26	54	Th	Alioth so. 5h 33m m.	7 33	5 22	6	Sets.	knee	11 1
10	62	37	39	Fri		7 32	5 21	58	5 23	knee	11 40
11	66	42	0	Sat	<i>Clear and cold.</i>	7 31	5 21	48	6 24	leg.	ev. 16
12	64	40	49	SU	1st Sun after Epiph.	7 30	5 21	39	7 26	leg.	0 49
13	64	42	34	Mo		7 29	5 21	29	8 28	feet	1 23
14	65	11	29	Tu	<i>Changeable.</i>	7 28	5 21	18	9 29	feet	1 56
15	65	19	40	We	☾ apogee [bon d. '94	7 28	5 21	7	10 30	feet	2 33
16	75	22	11	Th	Bat. Corunna, '09. Gib-	7 27	5 20	56	11 30	head	3 12
17	75	38	3	Fri	Franklin b. 1706.	7 26	5 20	45	Morn	head	3 57
18	65	50	42	Sat	Jas. Watt born 1736.	7 25	5 20	32	0 31	neck	4 57
19	66	1	38	SU	2d Sun after Epiph.	7 24	5 20	20	1 34	neck	6 6
20	59	48	17	Mo	Fabian. <i>Falling</i>	7 23	5 20	12	2 39	neck	7 23
21	60	13	34	Tu	Agnes. <i>weather.</i>	7 22	5 19	54	3 46	arm	8 33
22	59	59	49	We	Vincent. Byron b. '88.	7 21	5 19	40	4 54	arm	9 31
23	59	50	15	Th	Wm. Pitt died, 1806.	7 20	5 19	26	5 59	bre.	10 21
24	71	16	25	Fri	☽ runs high. <i>Stormy.</i>	7 19	5 19	12	6 58	bre.	11 8
25	60	11	24	Sat	Conver. of St. Paul.	7 18	5 18	57	Rises	hart.	11 51
26	64	13	39	SU	Septuagesima Sun.	7 17	5 18	42	6 39	hart.	Morn
27	64	36	54	Mo	D. Sussex born '73.	7 16	5 18	27	7 57	belly	0 32
28	61	26	51	Tu	Peter the Gt. d. 1725.	7 14	5 18	11	9 15	belly	1 12
29	64	24	21	We	George III. died, 1820	7 13	5 17	55	10 31	rein.	1 53
30	52	45	10	Th	Charles I. beheaded.	7 12	5 17	39	11 45	rein.	2 38
31	64	54	19	Fri	<i>Perhaps rain.</i>	7 11	5 17	22	Morn	secr.	3 29

OS, &c.

ations.

Longitude  
West of  
Greenwich

0 66 6 19  
6  
2 66 47 29  
4 67 5 47  
5 66 54 27  
0 66 56 59  
9 66 49 7  
4 66 47 21  
9 66 45 4  
1 66 26 54  
5 65 50 15  
6 63 37 48  
5 61 34 49  
3 60 58 30  
5 61 16 54  
2 62 37 39  
6 62 42 0  
2 64 40 49  
3 64 42 34  
0 65 11 29  
1 65 19 40  
7 65 22 11  
7 65 38 3  
65 50 42  
2 66 1 38  
5 59 48 17  
60 13 34  
59 59 49  
59 50 15  
71 16 25  
60 11 24  
64 13 39  
64 36 54  
61 26 51  
64 24 21  
52 45 10  
64 54 19

## FEBRUARY HAS XXVIII DAYS.

That wind, it seems a very dirge  
Which angel voices breathe,  
O'er aught, or bright or beautiful,  
That's parish'd here beneath.  
No warbler's note, or maiden's song  
Can touch the heart so well,  
The magic of its melodies  
Enthrals us with a spell.

It sings in Syren measure,  
Of the spring-tide of our life—  
The sterner joys of ripper years,  
The struggle and the strife:  
To young and buoyant bosoms,  
Of the pastime of the storm,  
The bright and glorious garniture  
Of hoary winter's form.

"He giveth snow like wool; he scattereth the hoar-frost like ashes; he casteth forth his ice like morsels."

### MOON'S PHASES.

New Moon 8th day, 0h. 22m. eve. | Full Moon 23d day, 4h. 21m. eve.  
First Qr. 16th, 5h. 2m. evening.

D.	D. W.	CALENDAR, &c.	☺		☉		R. S	○	High water			
			R. h.	S. m.	dec. d.	S m.				h.	m.	Plac.
1	Sat	Sexag. Sun. Pur. B. V.	7	9	5	17	5	0	57	secr.	4	31
2	SU	[Mary. Candlemas.	7	8	5	16	48	2	9	thi.	5	47
3	Mo	Low tides. <i>A cold spell</i>	7	7	5	16	31	3	17	thi.	7	11
4	Tu	Span Inq. abo. 1813.	7	6	5	16	13	4	21	knee	8	22
5	We	<i>about this time.</i>	7	4	5	15	53	5	19	knee	9	19
6	Th	Dr. Priestley d. 1804.	7	3	5	15	36	6	10	knee	10	4
7	Fri	Procyon south 7h 23m	7	2	5	15	18	6	53	legs	10	43
8	Sat	Alloth south 3h 35m	7	1	5	14	59	Sets.	legs	11	19	
9	SU	Shrove Sunday.	6	59	6	14	40	6	17	feet	11	52
10	Mo	<i>Pleasant</i>	6	57	6	14	20	7	19	feet	ev	22
11	Tu	Shrove Tuesday.	6	56	6	14	0	8	20	feet	0	54
12	We	Ash Wednesday. <i>for</i>	6	54	6	13	41	9	20	head	1	24
13	Th	<i>the season.</i>	6	53	6	13	21	10	20	head	1	56
14	Fri	Valentine.	6	52	6	12	0	11	22	neck	2	32
15	Sat	Sirius south 8h 55m	6	50	6	12	40	Morn	neck	3	15	
16	SU	1st Sunday in Lent.	6	49	6	12	19	0	25	neck	4	6
17	Mo	Tres. Ghent rat. 1817.	6	48	6	11	58	1	30	arms	5	18
18	Tu	M. Luther d. 1546.	6	46	6	11	37	2	35	arms	6	42
19	We	Low tides. Druns high.	6	45	6	11	16	3	39	breast	8	3
20	Th	<i>Falling weather.</i>	6	43	6	10	54	4	40	breast	9	11
21	Fri	Regulus south 11h 3m	6	42	6	10	33	5	53	hart.	10	5
22	Sat	<i>more settled.</i>	6	40	6	10	11	6	22	hart.	10	51
23	SU	2d Sunday in Lent.	6	39	6	9	49	Rises.	belly	11	34	
24	Mo	St. Matthias.	6	37	6	9	27	6	49	belly	Morn.	
25	Tu	Earl of Essex beh. [D.	6	36	6	9	5	8	9	reins	0	14
26	We	[Camb. b.	6	34	6	8	42	9	27	reins	0	52
27	Th	High tides.	6	32	6	8	20	10	44	secr.	1	33
28	Fri	<i>Fine.</i>	6	30	6	7	57	11	53	secr.	2	15

ife—  
ars,  
e:  
ns,  
m,  
iture

casteth

n. eve-

High  
water  
h. m.

4 31  
5 47  
7 11  
8 23  
9 13  
10 4  
10 43  
11 19  
11 52  
ev 22  
0 54  
1 24  
1 56  
2 32  
3 15  
4 6  
5 18  
6 42  
8 3  
9 11  
10 5  
10 51  
11 34  
Morn.  
0 14  
0 52  
1 33  
2 15



Haste, W  
aw  
Afar to  
Why long  
When  
to

Last Qr.  
New Moon  
First Qr.

D.	D.
M.	W.
1	Sat
2	SU
3	Mo
4	Tu
5	We
6	Th
7	Fri
8	Sat
9	SU
10	Mo
11	Tu
12	We
13	Th
14	Fri
15	Sat
16	SU
17	Mo
18	Tu
19	We
20	Th
21	Fri
22	Sat
23	SU
24	Mo
25	Tu
26	We
27	Th
28	Fri
29	Sat
30	SU
31	Mo

# MARCH HAS XXXI DAYS.

Haste, Winter! haste thee now  
 away,  
 Afar to boreal climes return;  
 Why longer here protract thy stay,  
 When Nature arms, thy power  
 to shun.

Muse, begin a joyful strain,  
 Like the season, laugh and sing;  
 Winter's bleak and dreary reign,  
 Yields to the return of spring.  
 From the mountain's lofty crown,  
 Chrystal streams rush gally down.

## MOON'S PHASES.

Last Qr. 2d day, 7h. 35m. morn.  
 New Moon 10th, 6h. 37m. morn.  
 First Qr. 18th, 8h. 23m. morning.

Full Moon 25th day, 1h. 34m.  
 morning.  
 Last Qr. 31st, 8h. 47m. evening.

D.	D.	CALENDAR, &c.	☉			SUN'S		R.	O	Plac.	High water h. m.	
			R.	& S.	dec.	S	& sets					
M.	W.		h.	m.	h.	d.	m.	h.	m.			
1	Sat	St. David. [ley d. 1791.	6	29	6	7	35	Morn	thi.	3	3	
2	SU	3d Sun in Lt. J. Wes-	6	27	6	7	12	1	9	thi.	4	1
3	Mo	Druns low. <i>Moderate</i>	6	26	6	6	49	2	16	thi.	5	19
4	Tu	<i>weather.</i>	6	25	6	6	26	3	16	knee	6	44
5	We		6	24	6	6	3	4	9	knee	7	53
6	Th	Low tides.	6	22	6	5	39	4	53	legs	8	57
7	Fri	Regulus south 10h 58m	6	21	6	5	16	5	30	legs	9	44
8	Sat	<i>Changeable,</i>	6	19	6	4	53	6	2	legs	10	23
9	SU	4th Sun in Lent.—Mid	6	18	6	4	29	6	29	feet	10	55
10	Mo	[Lent Sun.	6	16	6	4	6	Sets.	feet	11	26	
11	Tu	Moon apogee. <i>with</i>	6	14	6	3	42	7	12	head	11	53
12	We	Grego. Mar. <i>rain.</i>	6	13	6	3	19	8	13	head	ev.	24
13	Th	Hersch. disc. 1783.	6	11	6	2	55	9	15	head	0	55
14	Fri	Ad. Byng shot, 1757.	6	10	6	2	31	10	16	neck	1	26
15	Sat		6	8	6	2	8	11	20	neck	2	1
16	SU	5th Sunday in Lent.	6	7	6	1	44	Morn	arms	2	44	
17	Mo	St. Patrick.	6	5	6	1	20	0	24	arms	3	36
18	Tu	<i>Fair and</i>	6	3	6	0	57	1	27	arms	4	46
19	We	<i>mild.</i>	6	2	6	0	33	2	28	breast	6	12
20	Th	Bona. ret. to Paris, '15	6	0	6	0	9	3	24	breast	7	41
21	Fri	Cranmer burnt 1556.	5	59	7	N.	14	4	12	hart	8	51
22	Sat	Sir I. Newton d. 1797.	5	57	7	0	38	4	53	hart	9	47
23	SU	6th Sun in Lent. Palm	5	55	7	1	2	5	30	belly	10	32
24	Mo	Moon perigee. [Sun.	5	54	7	1	25	6	1	belly	11	14
25	Tu	Lady day. <i>Cold winds.</i>	5	52	7	1	49	Rises.	reins	11	53	
26	We	Arcturus rises 6h. 26m.	5	51	7	2	12	8	13	reins	Morn	
27	Th	Peace of Amiens, 1802	5	49	7	2	36	9	36	secr.	0	31
28	Fri	Good Friday.	5	48	7	2	59	10	52	secr.	1	11
29	Sat	Swedenborg d. 1772.	5	46	7	3	23	Morn	thi.	1	53	
30	SU	Easter Day. Allies en-	5	45	7	3	46	0	4	thi.	2	43
31	Mo	ter Paris, 1814.	5	43	7	4	9	1	9	knee	3	40



# APRIL HAS XXX DAYS.

The young buds are swelling,  
 They sway to the breeze,  
 Whose music is dwelling  
 In numberless trees.  
 Come forth to the meadows!  
 Their tenderest green

In the sunlight and shadows  
 Of April is seen;  
 Refreshed by the showers  
 That fall from above,  
 The earliest flowers  
 Are smiling in love.

## MOON'S PHASES.

New Moon 9th day, 0h. 3m. morn. | Full Moon 23 day, 9h 36m. even.  
 First Quarter 16th day, 7h 35m eve. | Last Qr. 30th day, 11h 52m morn.

D. M.	D. W.	CALENDAR, &c.	☺			☉		R. & S.	☽	High water	
			R.	S.	h. m. h.	dec. N	& sets				Plac.
1	Tu	<i>Clear</i>	5	41	7	4	33	2	6	knee	4 51
2	We	<i>and pleasant.</i>	5	40	7	4	56	2	54	legs	6 11
3	Th	Bp. Heber d. 1826.	5	38	7	5	19	3	33	legs	7 27
4	Fri	<del>St. Andrew Goldsmith d.</del>	5	37	7	5	42	4	6	legs	8 30
5	Sat	Lyra r. 3h. 7m. [1774.	5	36	7	6	4	4	34	feet	9 15
6	SU	1st Sun. after Easter—	5	34	7	6	27	4	58	feet	9 53
7	Mo	[Low S.	5	33	7	6	50	5	20	head	10 26
8	Tu	♀ stat. <i>Heavy</i>	5	32	7	7	12	5	42	head	10 57
9	We		5	30	7	7	35	Sets.		head	11 28
10	Th	<i>rains, and</i>	5	29	7	7	57	8	10	neck	11 53
11	Fri	<del>St. Andrew 1870.</del>	5	27	7	8	19	9	14	neck	ev. 29
12	Sat	High tides. <i>blustering</i>	5	25	7	8	41	10	17	arms	1 3
13	SU	2d Sun. after Easter.	5	23	7	9	3	11	21	arms	1 40
14	Mo	<i>weather.</i>	5	22	7	9	24	Morn		arms	2 24
15	Tu		5	21	7	9	46	0	22	breast	3 17
16	We	<del>St. Andrew 1864.</del>	5	19	7	10	7	1	18	breast	4 24
17	Th	<del>St. Andrew 1820.</del>	5	18	7	10	23	2	8	hart	5 49
18	Fri	<del>St. Andrew 1822.</del>	5	16	7	10	49	2	51	hart	7 18
19	Sat	<i>Pleasant</i>	5	15	7	11	10	3	27	belly	8 31
20	SU	3d Sunday after Easter	5	14	7	11	31	3	59	belly	9 25
21	Mo	Proc. sets 11h. 56m.	5	12	7	11	51	4	23	reins	10 11
22	Tu	Moon in perigee.	5	11	7	12	12	4	57	reins	10 52
23	We	St. George.	5	10	7	12	32	Rises.		secr.	11 32
24	Th	<i>and fair</i>	5	8	7	12	51	8	26	secr.	Morn
25	Fri	St. Mark. Ds. Glou. b.	5	7	7	13	11	9	43	thi.	0 12
26	Sat	[1776.	5	6	7	13	31	10	54	thi.	0 53
27	SU	4th Sund. after Easter.	5	4	7	13	50	11	56	knee	1 37
28	Mo	<i>for</i>	5	3	7	14	9	Morn		knee	2 23
29	Tu		5	1	7	14	23	0	49	knee	3 16
30	We	<i>some days</i>	5	0	7	14	46	1	33	legs	4 16

flows

n. even.  
m morn.

High  
water  
h. m.

e	4	51
	6	11
	7	27
	8	30
	9	15
	9	53
d	10	26
d	10	57
d	11	28
k	11	58
ev.	29	
s	1	3
s	1	40
s	2	24
t	3	17
t	4	24
	5	49
y	7	18
y	8	31
y	9	25
s	10	11
s	10	52
	11	32
Morn		
	0	12
	0	53
e	1	37
e	2	23
e	3	16
	4	16

*The  
10. In River Clear -*

The dew  
And th  
All silent  
Like t  
O sweete  
On thi

New Mo  
First Qu

D.	W.
1	Th
2	Fri
3	Sat
4	SU
5	Mo
6	Tu
7	We
8	Th
9	Fri
10	Sat
11	SU
12	Mo
13	Tu
14	We
15	Th
16	Fri
17	Sat
18	SU
19	Mo
20	Tu
21	We
22	Th
23	Fri
24	Sat
25	SU
26	Mo
27	Tu
28	We
29	Th
30	Fri
31	Sa

# MAY HAS XXXI DAYS.

The dew is on the flowers,  
And the sun upon the grass,  
All silently our hours,  
Like the silvery dew-drops, pass;  
O sweeter seems the morn  
On this fresh, untrodden ground,

Than in crowds to wander on,  
With a thousand faces round.  
The birds are singing now  
In the fields their grateful song,  
And, from the hills green brow,  
Flows the joyous stream along.

## MOON'S PHASES.

New Moon 8th day, 3h 39m. eve. | Full Moon 22d day, 6h 23m. even.  
First Qr. 16th day, 3h 15m. morn. | Last Qr. 30th day, 4h 14m. morn.

D. M.	D. W.	CALENDAR, &c.	☺		☉		☽		High water h. m.
			R. h.	S. m.	dec. d.	N. m.	& sets h. m.	Plac.	
1	Th	St. Philip & St James.	4 59	8 15	4 2	9	legs	5 27	
2	Fri	Low tides. <i>Change.</i>	4 57	8 15	2 2	38	feet	6 41	
3	Sat	Inv. of the Cross. <i>able.</i>	4 56	8 15	3 4	feet	7 43		
4	SU	5th Sun. af. E. Rog S.	4 55	8 15	3 26	feet	8 36		
5	Mo	[Serig. taken, 1799.]	4 54	8 16	3 48	head	9 19		
6	Tu	Bonaparte died, 1821.	4 53	8 16	4 8	head	9 53		
7	We	St. John Evan.	4 51	8 16	4 30	neck	10 28		
8	Th	Ascension. Holy Thur.	4 50	8 17	.5	Sets. neck	11 0		
9	Fri	Columbus sailed fr. Ca-	4 49	8 17	8 10	neck	11 34		
10	Sat	[diz, 1501.]	4 48	8 17	9 15	arms	ev. 9		
11	SU	Sunday after Ascen.	4 46	8 17	10 18	arms	0 47		
12	Mo	<i>Dull and</i>	4 45	8 18	.8	11 16	breast	1 27	
13	Tu		4 44	8 18	23	Morn breast	2 12		
14	We	<i>cloudy.</i>	4 43	8 18	38	0 7	hart	3 4	
15	Th	Arcturus so. 10. 34.	4 42	8 18	52	0 51	hart	4 4	
16	Fri	Battle of Albuera, 1811	4 41	8 19	6	1 29	hart	5 22	
17	Sat		4 40	8 19	20	2 0	belly	6 46	
18	SU	Whit Sunday.	4 39	8 19	33	2 29	belly	7 59	
19	Mo	Whit Monday. <i>Clear</i>	4 38	8 19	46	2 57	reins	8 58	
20	Tu	Whit Tuesday.	4 37	8 19	59	3 23	reins	9 43	
21	We	<i>and pleasant.</i>	4 36	8 20	11	3 52	secr.	10 32	
22	Th	<del>St. George's day.</del>	4 35	8 20	23	Rises. secr.	11 15		
23	Fri	Bat. of Ramillies, 1706.	4 34	8 20	35	8 31	thi.	11 56	
24	Sat		4 33	8 20	46	9 39	thi.	Morn	
25	SU	Trinity Sunday.	4 32	8 20	57	10 38	knee	0 37	
26	Mo	<i>Fine weather.</i>	4 31	8 21	8	11 28	knee	1 19	
27	Tu	<del>St. Andrew's day.</del>	4 30	8 21	18	Morn	legs	2 2	
28	We	KING's birth-day kept.	4 29	8 21	28	0 8	legs	2 43	
29	Th	<del>St. Barnabas's day.</del>	4 29	8 21	37	0 40	feet	3 38	
30	Fri	Peace in Eu. 1814.	4 28	8 21	46	1 7	feet	4 35	
31	Sat	<i>Warm for the season.</i>	4 27	8 21	55	1 31	feet	5 37	

## JUNE HAS XXX DAYS.

Summer, shining summer,  
 Art thou bringing now,  
 Colours to the red rose,  
 Green leaves to the bough,  
 Music to the singing birds,  
 And honey to the bee?  
 Summer, shining summer,  
 Oh! welcome unto thee!

Now linger in our valley,  
 Oh, why shouldst thou go forth  
 To thaw the snow and icicles  
 Of the eternal north?  
 Where wilt thou find a valley  
 More lovely for your home?  
 Ah! even now the shadows  
 Are lengthening as they come.

### MOON'S PHASES.

New Moon 7th day, 5h 18m. morn.  
 First Qr. 14th day, 8h 23m. morn.

Full Moon, 21st day, 3h 43m. mor.  
 Last Qr. 28th day, 9h. 18m. even.

D.	D.	CALENDAR, &c.	☉ Sun's		● R.		○ Plac.	High water				
			R. & S.	dec. n	& S.			h.	m.			
M.	W.		h.	m.	h.	m.		h.	m.			
1	SU	1st Sun. aft. Trin. Ni-	4	27	8	22	4	1	53	head	6	44
2	Mo	[comede.	4	26	8	22	12	2	13	head	7	42
3	Tu	<i>Warm and</i>	4	25	8	22	19	2	34	neck	8	35
4	We	Reform Bill passed by	4	25	8	22	26	2	57	neck	9	19
5	Th	[the Lords, 1832.	4	24	8	22	33	3	22	neck	9	53
6	Fri	<i>pleasant.</i>	4	24	8	22	40	3	51	arms	10	37
7	Sat	Reform Bill rec'd Roy.	4	23	8	22	46	Sets.		arms	11	16
8	SU	2d S. af. Trin. [assent.	4	23	8	22	51	9	10	breast	11	55
9	Mo	High tides. <i>summer</i>	4	22	8	22	57	10	4	breast	ev.	35
10	Tu	<i>showers.</i>	4	22	8	23	2	10	51	breast	1	17
11	We	St. Barnabas.	4	21	8	23	6	11	31	hart.	2	1
12	Th		4	21	8	23	10	Morn		hart.	2	49
13	Fri	♀ sets 9h. 22m.	4	21	8	23	14	0	4	belly	3	44
14	Sat	Bat. Marengo, 1800.	4	21	8	23	17	0	34	belly	4	51
15	SU	3d Sunday after Trin.	4	20	8	23	19	1	0	reins	6	8
16	Mo	<i>Dry and warm.</i>	4	20	8	23	22	1	26	reins	7	27
17	Tu	St. Alban.	4	20	8	23	24	1	53	seer.	8	34
18	We	Bat. of Waterloo, 1815.	4	20	8	23	25	2	22	seer.	9	29
19	Th	Magna Charta signed,	4	20	8	23	27	2	55	thi.	10	16
20	Fri	[1215.	4	20	8	23	27	3	34	thi.	10	59
21	Sat	Bat. of Vittoria, 1815.	4	20	8	23	28	Rises.		knee	11	42
22	SU	4th Sunday after Trin.	4	20	8	23	28	9	18	knee	Morn	
23	Mo	<i>Fine grousing</i>	4	20	8	23	27	10	2	legs	0	22
24	Tu	Nat. of St. John Bap.	4	20	8	23	26	10	39	legs	1	0
25	We	<i>weather.</i>	4	20	8	23	25	11	9	legs	1	39
26	Th	Geo. IV. died, 1830.	4	20	8	23	22	11	34	feet	2	17
27	Fri	Rev. Dr. Dodd hung.	4	20	8	23	21	11	56	feet	3	56
28	Sat	King Wm. IV. procl.	4	21	8	23	18	Morn		head	3	42
29	SU	5th S. af. Trin. St. Pet	4	21	8	23	15	0	17	head	4	34
30	Mo	Low tides. <i>Fine.</i>	4	21	8	23	12	0	38	head	5	34

The clo  
 le  
 A regi  
 b  
 And the  
 Compos  
 h

New Mo  
 First Qr

D.	D.
M.	W.
1	Tu
2	We
3	Th
4	Fri
5	Sat
6	SU
7	Mo
8	Tu
9	We
10	Th
11	Fri
12	Sat
13	SU
14	Mo
15	Tu
16	We
17	Th
18	Fri
19	Sat
20	SU
21	Mo
22	Tu
23	We
24	Th
25	Fri
26	Sat
27	SU
28	Mo
29	Tu
30	We
31	Th

# JULY HAS XXXI DAYS.

The clouds pass away, and are leaving the sky  
 A region of azure, unclouded and bright; [tremulous eye,  
 And the star of the twilight, with Comes forth like an angel that heralds the night.

Not a zephyr is curling the breast of the stream,  
 Not a zephyr is stirring the leaves of the trees,  
 And low hollow sounds, like the hum of a dream, [ble seas.  
 Steal over the vale from the volu.

## MOON'S PHASES.

New Moon 6th day, 4h. 34m. even. Full Moon 20th day, 2h 37m. even.  
 First Qr. 18th day, 0h. 36m. even. Last Qr. 26th day, 2h. 26m. even.

High water  
 h. m.

6 44  
 7 42  
 8 35  
 9 19  
 9 58  
 10 37  
 11 16  
 11 55  
 ev. 35  
 1 17  
 2 1  
 2 49  
 3 44  
 4 51  
 6 8  
 7 27  
 8 34  
 9 29  
 10 16  
 10 59  
 11 42  
 Morn  
 0 22  
 1 0  
 1 39  
 2 17  
 2 56  
 3 42  
 4 34  
 5 34

D.	D. W.	CALENDAR, &c.	☺	SUN'S	●	R.	○	High water
K.			R. & S.	dec. N	& S.	Plac.		k. m.
			h. m. h.	d. m. h.	h. m.			
1	Tu	Antares so. 9h. 40m.	4 21	8 23	8 0	59	neck	6 41
2	We	Visitat. of B. V. Mary.	4 22	8 23	4 1	23	neck	7 45
3	Th	Warm with rain.	4 22	8 22	59 1	51	arms	8 43
4	Fri	[1860.	4 23	8 22	54 2	23	arms	9 33
5	Sat	French took Algiers,	4 23	8 22	49 3	4	arms	10 13
6	SU	6th Sunday of Trinity.	4 24	8 22	43	Sets.	breast	11 1
7	Mo	Sheridan died, 1816.	4 24	8 22	37 8	47	breast	11 43
8	Tu	7 stars rise 1h. 3m.	4 25	8 22	30 9	30	hart.	ev. 25
9	We	Fine and clear.	4 25	8 22	23 10	7	hart.	1 6
10	Th	Calvin born, 1509.	4 26	8 22	16 10	38	belly	1 47
11	Fri	Moon in perigee.	4 26	8 22	8 11	5	belly	2 31
12	Sat	Spica sets 11h 17m	4 27	8 22	0 11	31	reins	3 19
13	SU	7th Sunday of Trinity.	4 28	8 21	52 11	57	reins	4 19
14	Mo	French rev. of 1789 be-	4 29	8 21	43	Morn	secr.	5 33
15	Tu	Switbio. [gan.	4 29	8 21	34 0	25	secr.	6 57
16	We	Rain.	4 30	8 21	24 0	55	thi.	8 10
17	Th	Dr. Watts born, 1764.	4 31	8 21	14 1	81	thi.	9 12
18	Fri		4 32	8 21	4 2	14	thi.	10 3
19	Sat	Very fine.	4 33	8 20	53 3	4	knee	10 46
20	SU	8th Sunday after Trin.	4 34	8 20	42	Rises.	knee	11 27
21	Mo	Burns d. 1796. [Marg.	4 35	8 20	31 8	37	legs	Morn
22	Tu	Magdalene. [1706.	4 36	8 20	19 9	9	legs	0 4
23	We	Union of Eng. & Scot.	4 37	8 20	7 9	35	feet	0 38
24	Th	Changeable	4 38	8 19	54 9	59	feet	1 11
25	Fri	Rev. in France, 1830.	4 39	8 19	42 10	21	feet	1 44
26	Sat	St. Anne. [St. James.	4 40	8 19	28 10	41	head	2 13
27	SU	9th Sunday after Trin.	4 41	8 19	15 11	2	head	2 54
28	Mo	Fine.	4 42	8 19	1 11	24	neck	3 39
29	Tu	Bat. of Talavera, 1809.	4 43	8 18	47 11	50	neck	7 34
30	We	Low tides. Good	4 44	8 18	33	Morn	neck	5 39
31	Th	hayng weather.	4 45	8 18	18 0	20	arm	6 57



# AUGUST HAS XXXI DAYS.

Gay Summer's charms are on the wing,  
Swiftly they fly while now I sing,  
Rough winter soon succeeds;  
Ye youths, so glide your charms away,

Provide for winter's hast'ning day,  
The fruits of virtuous deeds.  
Happy the youth, who always treads  
Fair Virtue's path, which upward leads  
To climes beyond the sky.

## MOON'S PHASES.

New Moon 5th day, 1h 56m morn | Full Moon 19th day, 3h 32m morn.  
First Qr. 11th day, 5h 34m evening | Last Qr. 27th day, 7h 7m. morning.

D. M.	D. W.	CALENDAR, &c.	☺		☀		● R.		○ Plac.	High water	
			R. h.	S. m.	dec. h.	N. m.	& h.	S. m.		h.	m.
1	Fri	Lammas day. America	4	46	8	19	9	0	56	arms	9 9
2	Sat	[disc. 1498.	4	47	8	17	48	1	41	brea.	9 10
3	SU	10th Sun af. Trin. Abd.	4	49	8	17	38	2	36	brea	10 1
4	Mo	[of Chas. X. 1830.	4	50	8	17	17	3	41	hart	10 48
5	Tu	<i>Sultry,</i>	4	51	8	17	1	<i>Sets.</i>	hart	11 31	
6	We	Transfig. of Christ.	4	52	8	16	44	8	38	belly	ev. 11
7	Th	Moon in per. <i>and</i>	4	53	8	16	28	9	7	belly	0 49
8	Fri	Geo Canning d. 1827.	4	55	8	16	11	9	36	reins	1 29
9	Sat	Louis Phil K. of France	4	56	8	15	53	10	0	reins	2 9
10	SU	11th S. of Trin. [1830.	4	57	8	15	36	10	27	sec.	2 55
11	Mo	<i>perhaps thunder.</i>	4	58	8	15	18	10	57	sec.	3 51
12	Tu	Louis XVI. deth. 1792	4	59	8	15	1	11	31	sec.	5 5
13	We	<i>Refreshing showers.</i>	5	1	7	14	42	<i>Morn</i>	thig	6 31	
14	Th		5	2	7	14	24	0	11	thig	7 53
15	Fri	Bonaparte born, 1769.	5	4	7	14	5	0	59	knee	8 57
16	Sat		5	5	7	13	47	1	53	knee	9 49
17	SU	12th Sund. after Trin.	5	6	7	13	27	2	54	legs	10 30
18	Mo	<i>Fair and pleasant.</i>	5	8	7	13	8	3	58	legs	11 8
19	Tu	High tides.	5	9	7	12	49	<i>Rises.</i>	feet	11 41	
20	We		5	10	7	12	29	3	2	feet	<i>Morn</i>
21	Th	K.Wm IV. born, 1765.	5	12	7	12	9	8	24	feet	0 12
22	Fri	<i>Very warm.</i>	5	13	7	11	49	9	45	head	0 41
23	Sat	Herschell died, 1822.	5	14	7	11	29	9	5	head	1 11
24	SU	13th Sun. af. Trin. St.	5	16	7	11	8	9	27	neck	1 42
25	Mo	[Bartholomew.	5	17	7	10	48	9	51	neck	2 17
26	Tu	Aldebar. rises 11h.	5	19	7	10	27	10	18	neck	2 56
27	We	Dr. A. Clarke d. 1832.	5	20	7	10	6	10	51	arms	8 47
28	Th	St. Aug. <i>Cloudy.</i>	5	21	7	9	45	11	30	arms	4 58
29	Fri	St. John Baptist beh.	5	23	7	9	24	<i>Morn</i>	bres.	6 15	
30	Sat	Sirius rises 3h 6m	5	24	7	9	2	0	19	bres.	7 38
31	SU	14th Sun. after Trin.	5	26	7	8	40	1	19	bres.	8 49

Pomon  
The  
From  
To  
On eve  
Brig

New M  
First C

D. M.	D. W.
1	Mo
2	Tu
3	We
4	Th
5	Fri
6	Sat
7	SU
8	Mo
9	Tu
10	We
11	Th
12	Fri
13	Sat
14	SU
15	Mo
16	Tu
17	We
18	Th
19	Fri
20	Sat
21	SU
22	Mo
23	Tu
24	We
25	Th
26	Fri
27	Sat
28	SU
29	Mo
30	Tu

# SEPTEMBER HAS XXX DAYS.

Pomona's fruits, in golden suits,  
 The sight and smell delighting,  
 From many a bough, hang pendant now,  
 To touch, take, taste, inviting.  
 On every hand, the laughing land  
 Bright boons of culture proffers,

Worth ten times told the hordes of  
 gold  
 Which rust in miser's coffers.  
 The yellow leaf denotes the fall,  
 The hour of nature's sad decay;  
 So rapid pass the seasons all,  
 A moment, and they fade away.

## MOON'S PHASES.

New Moon 31 day, 10h 12m morn. | Full Moon 17th day, 6h. 39m. eve  
 First Qr. 10th day, 0h 47m. morn. | Last Qr. 25th day, 10h. 27m. eve

D. M.	D. W.	CALENDAR, &c.	☺		☾		R. & S. Plac.	High water h. m.
			R. & S. h. m	S. d. m.	SUN'S h. d. m.	R. & S. h. m.		
1	Mo	Giles.	5 28 7	8 19	2 28	hart.	9 45	
2	Tu		5 30 7	7 57	3 48	hart.	10 31	
3	We	Cromwell died, 1658.	5 31 7	7 35	Sers.	belly	11 13	
4	Th	<i>Variable.</i>	5 33 7	7 13	7 34	belly	11 53	
5	Fri	Dog days end.	5 34 7	6 51	8 1	reins	ev 30	
6	Sat		5 35 7	6 28	8 25	reins	1 9	
7	SU	15th S. af. Trin. Wm.	5 36 7	6 6	8 57	secr.	1 49	
8	Mo	[IV. & Q. Adelaide	5 37 7	5 43	9 31	secr.	2 36	
9	Tu	[crowned, 1831.	5 39 7	5 21	10 9	thi.	3 32	
10	We	Low tides. <i>The</i>	5 41 7	4 58	10 55	thi.	4 44	
11	Th	<i>mornings and</i>	5 42 7	4 35	11 48	knee	6 9	
12	Fri	<i>evenings become</i>	5 44 7	4 12	MORN	knee	7 34	
13	Sat	Gen. Wolfe killed.	5 45 7	3 49	0 47	legs	8 40	
14	SU	16th S. af Trin. Holy	5 47 7	3 26	1 50	legs	9 30	
15	Mo	<i>cool.</i> [Cross.	5 48 7	3 3	2 54	legs	10 8	
16	Tu		5 50 7	2 40	3 58	feet	10 43	
17	We	Lambert.	5 51 7	2 17	Rises	feet	11 14	
18	Th	Cap. of Quebec, 1759.	5 53 7	1 53	6 49	head	11 43	
19	Fri	<i>Very fine.</i>	5 54 7	1 30	7 10	head	Morn	
20	Sat	[Matt.	5 56 7	1 7	7 30	head	0 12	
21	SU	17th S. after Trin. St.	5 57 7	0 43	7 53	neck	0 41	
22	Mo	[Sir W. Scott d. '32.	5 59 7	0 20	8 13	neck	1 12	
23	Tu	<i>Changeable,</i>	6 1 6	S. 3	8 48	arms	1 47	
24	We	<i>with showers.</i>	6 2 6	0 27	9 24	arms	2 27	
25	Th		6 4 6	0 50	10 8	arms	3 16	
26	Fri	St. Cyprian.	6 5 6	1 14	11 2	brea	4 13	
27	Sat	<i>Fair and pleasant.</i>	6 7 6	1 37	MORN	brea	5 41	
28	SU	17th Sun. af Trin.	6 8 6	2 0	0 5	hear	7 11	
29	Mo	St. Michael.	6 10 6	2 24	1 16	hear	8 26	
30	Tu	St. Jerome.	6 12 6	2 47	2 33	belly	9 24	

ng day,  
 eds.  
 s treads  
 upward  
 y.

m morn.  
 morning.

High water h. m.  
 8 9  
 9 10  
 10 1  
 10 48  
 11 31  
 ev. 11  
 0 49  
 1 29  
 2 9  
 2 55  
 3 51  
 5 5  
 6 31  
 7 53  
 8 57  
 9 49  
 10 30  
 11 8  
 11 41  
 Morn  
 0 12  
 0 41  
 1 11  
 1 42  
 2 17  
 2 56  
 3 47  
 4 53  
 6 13  
 7 33  
 8 49



# OCTOBER HAS XXXI DAYS.

Well, Autumn, thou art welcome,  
With sheaves of ripened corn;  
The hunter's moon is shining,  
The hills ring with his horn.  
The grapes are dyed with purple,  
The leaves are tinged with red,

And the green and golden plumage  
Of the pheasants wing is spread.  
Fount of mercy, God of love!  
How rich thy bounties are!  
The rolling seasons, as they move,  
Proclaim thy constant care.

### MOON'S PHASES.

New Moon 2d day, 6h. 23m. even. | Full Moon 17th day, 11h 47m mor.  
First Qr. 9th day, 11h. 21m morn. | Last Qr. 25th day, 11h 49m. morn.

D.	D. W.	CALENDAR, &c.	☾		☀		☾ R.		Plac.	High water h. m.	
			R. & S.	h. m.	dec. s	h. m.	& sets	h. m.			
1	We	Remigius.	6	13	6	3	11	3	52	belly	10 11
2	Th	<i>Clear and</i>	6	15	6	8	34	Sets.	reins		10 52
3	Fri	<i>pleasant.</i>	6	16	6	3	57	6	26	reins	11 32
4	Sat	Belgium inde. 1930.	6	18	6	4	20	6	55	sectr.	ev 31
5	SU	19th Sun after Trin.	6	19	6	4	44	7	27	sectr.	0 51
6	Mo		6	21	6	5	7	8	4	thi.	1 54
7	Tu	<i>Slight frosts.</i>	6	22	6	5	30	8	48	thi.	2 21
8	We		6	24	6	5	53	9	40	knee	3 17
9	Th	St. Denys.	6	25	6	6	16	10	38	knee	4 24
10	Fri	Alioth south 11h 30m	6	26	6	6	38	11	41	knee	5 02
11	Sat	Duncan's vict. 1797.	6	27	6	7	1	morn.	legs		7 5
12	SU	20th Sunday after Tri.	6	29	6	7	24	0	46	legs	8 9
13	Mo	Col. divc. Bahama 1492	6	30	6	7	46	1	51	feet	8 58
14	Tu	<i>High winds.</i>	6	32	6	8	9	2	54	feet	9 20
15	We		6	34	6	8	31	3	56	head	10 18
16	Th	Latimer burnt, 1555.	6	36	6	8	52	4	57	head	10 44
17	Fri	Ethel.	6	37	6	9	15	rises.	head		11 35
18	Sat	St. Luke. <i>Rain.</i>	6	39	6	9	37	5	28	neck	11 44
19	SU	21st Sund, after Trin.	6	40	6	9	59	6	22	neck	morn.
20	Mo		6	42	6	10	21	6	50	neck	0 16
21	Tu	Bat of Trafalgar, 1805,	6	43	6	10	42	7	23	arms	0 40
22	We	<i>High winds</i>	6	45	6	11	3	8	4	arms	1 25
23	Th		6	46	6	11	25	8	53	breast	2 7
24	Fri	<i>and rain.</i>	6	47	6	11	46	9	51	breast	2 55
25	Sat	Crispin.	6	49	6	12	6	10	57	hart.	3 52
26	SU	22d Sund. after Trin.	6	50	6	12	27	morn.	hart.		5 13
27	Mo	<i>Fair and fine.</i>	6	52	6	12	48	0	0	hart.	6 33
28	Tu	St. Simon & St. Jude.	6	53	6	13	8	1	25	belly	7 54
29	We	7 stars south 1h Sun	6	54	6	13	28	2	42	belly	8 55
30	Th	<i>Chilling winds.</i>	6	55	6	13	49	4	2	reins	9 48
31	Fri	Moon in perigee.	6	57	6	14	7	5	22	reins	10 20

average  
spread.  
e!  
re!  
y move,  
re.

7m mor.  
a. more.

High  
water  
h. m.

10 11  
10 52  
11 32  
ev 21  
0 51  
1 34  
2 21  
3 17  
4 24  
5 02  
7 5  
8 9  
8 58  
9 29  
10 18  
10 44  
11 15  
11 14  
morn.  
0 16  
0 40  
1 26  
2 7  
2 55  
3 54  
5 19  
6 38  
7 54  
8 55  
9 46  
10 00

When  
The  
Thy  
And  
The sp

New  
First  
Full

D.	D.
N.	W.
1	Sa
2	SU
3	Mo
4	Tu
5	We
6	Th
7	Fri
8	Sa
9	SU
10	Mo
11	Tu
12	We
13	Th
14	Fr
15	Sa
16	SU
17	Mo
18	Tu
19	We
20	Th
21	Fr
22	Sa
23	SU
24	Mo
25	Tu
26	We
27	Th
28	Fr
29	Sa
30	SU

# NOVEMBER HAS XXX DAYS.

When in the bosom of the earth  
The sower hid the grain,  
Thy goodness marked its secret  
birth,  
And sent the early rain.  
The spring's sweet influence, Lord,  
was thine :

The plants in beauty grew ;  
Thou gav'st refulgent suns to shine,  
And mild, refreshing dew.  
These various mercies from above,  
Matured the swelling grain ;  
A kindly harvest crowns thy love,  
And plenty fills the plain.

### MOON'S PHASES.

New Moon 1st day, 3h 29m morn.  
First Qr 8th day, 1h 51m morning.  
Full Moon 16th day, 6h 8m morn.

Last Qr. 23d day, 10h 57m. even.  
New Moon 30th day, 2h 8m. eve-  
ning.

D.	D.	CALENDAR, &c.	☉		☽		R.	Plac.	High			
			R.	S.	dec.	S			S.	h.	m.	
M.	W.		h.	m.	h.	m.	h.	m.	h.	m.		
1	Sat	All Saints. <i>Change-</i>	6	59	6	14	27	Sets.	secr.	11	12	
2	SU	23d Sund. after Trin.	7	0	5	14	46	5	56	secr.	11	53
3	Mo	<i>able.</i> [All Souls.	7	2	5	15	5	6	38	thi.	ev	35
4	Tu		7	3	5	15	23	7	27	thi.	1	19
5	We	[1821.	7	4	5	15	42	8	25	knee	2	6
6	Th	Princess Charlotte died	7	5	2	16	0	9	29	knee	2	57
7	Fri	<i>Clear and fine.</i>	7	6	5	16	18	10	33	legs	3	55
8	Sat	Milton died, 1674.	7	8	5	16	35	11	41	legs	5	5
9	SU	24th Sun. af. Trin.	7	9	5	16	53	morn.	feet	6	15	
10	Mo	Luther born, 1483.	7	10	5	17	10	0	45	feet	7	22
11	Tu	St. Martin. <i>Pleasant.</i>	7	12	5	17	27	1	48	feet	8	17
12	We		7	13	5	17	43	2	49	head	9	1
13	Th	St. Britius. <i>Hard</i>	7	14	5	17	59	3	50	head	9	39
14	Fri	Warsaw taken, 1794.	7	15	5	18	15	4	51	neck	10	14
15	Sat	Machutus. <i>frosts.</i>	7	16	5	18	30	5	53	neck	10	47
16	SU	25th Sund after Trin.	7	17	5	18	46	rises.	neck	11	21	
17	Mo		7	18	5	19	0	5	24	arms	11	55
18	Tu	<i>Signs</i>	7	20	5	19	15	6	2	arms	morn	
19	We	<i>of snow.</i>	7	21	5	19	29	6	49	breast	0	33
20	Th		7	22	5	19	43	7	44	breast	1	11
21	Fri	[lotte died, 1818.	7	23	5	19	56	8	47	breast	1	53
22	Sat	Cecilia. Queen Char-	7	24	5	20	9	9	56	hart.	2	41
23	SU	26th Sun. after Tr. St.	7	25	5	20	22	11	8	hart.	3	36
24	Mo	[Clement.	7	26	5	20	34	morn	belly	4	41	
25	Tu	St. Catherine. <i>Stormy.</i>	7	27	5	20	46	0	22	belly	5	53
26	We		7	28	5	20	58	1	38	reins	7	18
27	Th	Jup. south 11h 54m	7	29	5	21	9	2	55	reins	8	26
28	Fri	<i>snow or rain.</i>	7	30	5	21	20	4	13	secr.	9	20
29	Sat	[Andrew.	7	31	5	21	30	5	34	secr.	10	8
30	SU	Advent Sunday. St.	7	32	5	21	40	Sets.	thi.	10	53	

# DECEMBER HAS XXXI DAYS.

The passing year, all grey with hours,  
Ends, dull month, with thee:  
Chilled his summer, dead his flow-  
Soon will his funeral be; ifers,  
Frost shall drink up his latest  
breath,

And tempest rock him into death.  
How he shivers! from his age  
All his leaves have faded,  
And his weary pilgrimage  
Ends at last-unaided  
By his own sun that dims its ray;  
To leave him dark in his decay.

### MOON'S PHASES.

First Qr. 7th day, 8h 4m evening. Last Qr. 28d day, 8h 11m. morn.  
Full Moon 16th day, 0h 16m morn. New Moon 30th day, 2h 39m morn.

D.	D. W.	CALENDAR, &c.	☺		☉		R.	Plac.	High water			
			R. & S.	dec.	S	& S.			h.	m.	h.	m.
1	Mo	Emp. Alex. died, 1825.	7	32	5	21	50	5	12	thi.	11	37
2	Tu	Merc. stat.	7	33	5	21	59	6	7	knee	11	22
3	We	<i>Changeable.</i>	7	34	5	22	8	7	9	knee	11	5
4	Th		7	34	5	22	16	8	17	legs	11	49
5	Fri	<i>Mild</i>	7	35	5	22	24	9	25	legs	12	34
6	Sat	Nicholas.	7	36	5	22	31	10	32	legs	12	21
7	SU	2d Sunday in Advent.	7	36	5	22	38	11	36	feet	12	12
8	Mo	Con. B. V. M. for the	7	37	5	22	45	morn	feet	12	13	
9	Tu		7	37	5	22	51	0	39	head	12	17
10	We	Moon apogee.	7	38	5	22	56	1	40	head	12	20
11	Th	<i>season.</i>	7	38	5	23	1	2	41	head	12	14
12	Fri	7 stars south 10h 12m	7	39	5	23	6	3	43	neck	12	12
13	Sat	Lucy.	7	39	5	23	10	4	46	neck	12	44
14	SU	3d Sunday in Advent.	7	39	5	23	14	5	50	arms	10	23
15	Mo	<i>Clear</i>	7	40	5	23	17	6	54	arms	11	1
16	Tu	<i>and cold.</i>	7	40	5	23	20	rises	bres.	11	40	
17	We	Bolivar died, 1830.	7	40	5	23	23	5	37	bres.	morn.	
18	Th		7	40	5	23	25	6	39	bres.	10	20
19	Fri	<i>Hail or snow.</i>	7	40	5	23	26	7	47	hart.	11	0
20	Sat		7	40	5	23	27	8	53	hart.	11	40
21	SU	4th Sund. in Adv. St.	7	40	5	23	28	10	11	belly	12	24
22	Mo	[Thomas.]	7	40	5	23	28	11	25	belly	12	41
23	Tu		7	40	5	23	27	morn	reins	12	26	
24	We	Ghent treaty sign. 1814	7	40	5	23	26	10	39	reins	12	18
25	Th	Christmas Day.	7	40	5	23	25	1	54	secr.	12	38
26	Fri	St. Stephen.	7	40	5	23	23	3	12	secr.	12	33
27	Sat	St. John. [nocents.]	7	40	5	23	21	4	29	thi.	12	37
28	SU	1st S. of Christmas. In-	7	39	5	23	18	5	47	thi.	12	32
29	Mo	<i>Fine seasonable</i>	7	39	5	23	15	7	0	thi.	10	40
30	Tu		7	39	5	23	11	sets	knee	11	26	
31	We	Silvester. <i>weather.</i>	7	38	5	23	7	5	53	knee	11	3

Willie  
Isaac  
Rever  
Mr. J

Char  
Robe  
Hono  
Hono

# PROVINCE of NEW-BRUNSWICK.

HIS EXCELLENCY

Major-General Sir ARCHIBALD CAMPBELL, Bart. G. C. B.  
Lieutenant-Governor and COMMANDER-IN-CHIEF of the Pro-  
vince of New-Brunswick, &c. &c. &c.

## EXECUTIVE COUNCIL.

Honorable Thomas Baillie,  
" Frederick P. Robinson,  
" William F. Odell,  
" George F. Street,  
" John S. Saunders.

## LEGISLATIVE COUNCIL.

Honorable John Saunders, *President*,  
Lord Bishop of Nova-Scotia,  
Honorable William Black,  
" George Shore,  
" Thomas Baillie,  
" Harry Peters,  
" Frederick P. Robinson,  
" Richard Simonds,  
" Joseph Cunard,  
" William H. Robinson,  
" John S. Saunders,  
" James Allanshaw.

## Officers of the Legislative Council.

William Tyng Peters, Esquire, *Clerk*.  
Isaac W. Joubert, Esq. *Sergeant at Arms and Usher of the Black*  
Reverend George Coster, A. M. *Chaplain*. [Rod.  
Mr. John Gregory, *Clerk Assistant of the Council*.

## Principal Officers of Government.

Charles J. Peters, Esquire, *Attorney General*.  
Robert Parker, Esquire, *Solicitor General*. *Prison Judge*  
Honorable George F. Street, *Advocate General*.  
Honorable William F. Odell, *Secretary, Register and Clerk of the*  
*Executive Council*.

Honorable Thomas Baillie, *Commissioner of Crown Lands and Surveyor General.*

George P. Bliss, Esquire, *Receiver General.*

Honorable Frederick P. Robinson, *Surveyor and Auditor of the King's Casual Revenue.*

Hon. George Shore,  
Hon. Frederick P. Robinson, } Commissioners of Accounts of the  
Hon. John S. Saunders, } King's Casual Revenue.

Hon. Thomas Baillie, } Commissioners for managing and superintending  
Hon. John S. Saunders, } the sale, levying, and collecting of His  
Majesty's Quit Rents.

Hon. William F. Odell, Secretary to ditto.

HOUSE OF ASSEMBLY.

WILLIAM CRANE, Esquire, *Speaker.*

*County of Saint John.*

*County of York.*

Stephen Humbert, }  
Charles Simonds, } Esquires.  
John R. Partelow, }  
John Ward, junior, }  
John Allen, }  
Jedediah Slason, } Esquires.  
William Taylor, }  
James Taylor, junr. }

*County of Charlotte.*

*County of Westmorland.*

James Brown, jun. }  
Patrick Clinch, } Esquires.  
George S. Hill, }  
Thomas Wyer, }  
Edward B. Chandler, }  
William Crane, } Esquires.  
Rufus Smith, }  
Robert Scott, }

*King's County.*

*Queen's County.*

John Humbert, } Esquires.  
John C. Vail, }  
Thomas Gilbert, } Esquires.  
Charles Harrison, }

*County of Sunbury.*

*County of Northumberland.*

George Hayward, } Esquires.  
Thomas O. Miles, }  
Alexander Rankin, } Esquires.  
John A. Street, }

*County of Kent.*

*County of Gloucester.*

John W. Weldon, Esquire. William End, Esquire.

*City of Saint John.*

Thomas Barlow, } Esquires.  
William B. Kinnear, }

Officers of the House of Assembly.

Charles P. Wetmore, Esquire, Clerk.

Mr. Thomas S. Wetmore, Clerk Assistant.

Henry G. Clopper, Esquire, Sergeant at Arms.

Reverend James Somerville, L. L. D. Chaplain.



House of Assembly before in  
November 1834 & was  
your for a new election  
election commenced in  
York County by the  
Decr 1834. - Rev. Mr. [unclear]  
came forward but [unclear]  
immediately. Had contest between  
Haw. & [unclear] -  
Decision returned 97 more the  
[unclear]



Chief Justice The Hon: W. Chapman  
Sept 1854

Judges: The Hon: W. Botwell

“ “ “ “ — Carter

“ “ “ “ — Parker

William J. Peters Clerk of the Circuit etc.



The C  
Hon  
Neville  
Hon. C  
Henry  
Daniel  
William  
Terms

The  
de

TER

SU  
Ch

Ch  
Ho  
John T  
Ter

of T

Cour

Judg  
Res  
Mor  
Hi

## COURT OF CHANCERY.

His Excellency the Lieutenant Governor, Chancellor.

The Chief Justice, and the Judges of the Supreme Court, Assessors of the Court.

Honorable William F. Odell, Clerk of the Crown in Chancery.

Neville Parker, Esquire,  
Hon. George F. Street,  
Henry Swymmer, Esquire, } Masters.

Daniel Ludlow Robinson, Esquire, Register.

Chancery.

William M'Beath, Esquire, Sergeant at Arms attending the Court of

Terms.—The 2d Monday after each Term day of the Supreme Court.

### *The Court of Governor and Council for hearing and determining Causes relating to Marriage and Divorce.*

His Excellency the Lieutenant Governor, President,

Hon. William Botsford, Vice-President,

The Honorable His Majesty's Council, Members,

Henry G. Clopper, Esquire, Clerk.

TERMS—The first Tuesdays in February and July.

## SUPREME COURT OF JUDICATURE.

Chief Justice—Honorable John Saunders, 19th Oct. 1822. *Abit. Mar 23*

Justices.— } " John M. Bliss, 9th July, 1816. *Abit. Aug 23*

" William Botsford, 2d April, 1823.

" Ward Chipman, 17th March, 1825.

Charles S. Putnam, Esquire, Clerk of the Crown.

Hon. George Shore, Clerk of the Pleas.

John T. Murray, Esquire, Clerk of the Circuits; and Clerk of the Crown on the Circuits. *Abit Sept. 1834*

Terms—The first Tuesdays in February and May, and the second Tuesdays in July and October.

### *Court of Vice-Admiralty.*

Neville Parker, Esquire, Judge and Commissary.

Hon. George F. Street, Advocate General.

William Tyng Peters, Esquire, Registrar and Scribe.

Thomas M. Hazen, Esquire, Marshal.

☞ This Court sits at Saint John on every third day throughout the year, Sundays excepted.

### *Court for the Trial and Punishment of Piracy and Offences committed on the High Seas.*

Judges—The Chief Justice, and the Justices of the Supreme Court,

Registrar and Scribe—William Tyng Peters, Esquire.

Marshal—Edward W. Miller, Esquire.

☞ This Court, which is held under a Commission issuing out of the High Court of Admiralty in England, sits at Fredericton whenever there is any business before it.

**COURT FOR THE PROBATE OF WILLS,  
AND GRANTING ADMINISTRATIONS.**

Hon. William F. Odell, Register for the Province.

*Surrogates and Registers.*

- Hon. George F. Street, Surrogate, York.
- Henry Swymmer, Esquire, Surrogate, } Saint John.  
Charles Drury, Esquire, Deputy Register, }
- Edward B. Chandler, Esquire, Surrogate, } Westmorland.  
James Stewart, Esquire, Deputy Register, }
- Harris Hatch, Esquire, Surrogate, } Charlotte.  
Colin Campbell, Esquire, Deputy Register, }
- Henry Nase, Esq. Surrogate and Deputy Register, King's County.
- N. H. De Veber, Esquire, Surrogate, } Queen's County.  
Valentine H. Peters, Esquire, Deputy Register, }
- George W. Cleary, Esquire, Surrogate, } Sunbury.  
N. Hubbard, Esquire, Deputy Register, }
- Thomas H. Peters, Esquire, Surrogate, } Northumberland.  
J. A. S. Street, Esquire, Deputy Register, }
- William Chandler, Esquire, Surrogate, } Kent.  
John W. Weldon, Esquire, Deputy Register, }
- William End, Esquire, Surrogate and Deputy Register, Gloucester.
- B. C. Beardsley, Esquire, Surrogate, } Carleton.  
N. Merrill Hazen, Esquire, Deputy Register, }

The Surrogate Courts are held every third day (Sunday excepted,) in their respective Counties, but Letters of Administration may be had, and Wills proven, &c. at any time by application to the Surrogate of the County.

**COUNSELLORS AND ATTORNIES,  
PRACTISING IN THE PROVINCE.**

*Fredericton.*—Charles Jeffrey Peters, (*Attorney General*.) William Tyng Peters, Hon. John Simcoe-Saunders, (*King's Counsel*.) George F. Street, George P. Bliss, Daniel Ludlow Robinson, George J. Dibbles, Charles S. Putnam, A. K. Smedes Wetmore, Charles P. Wetmore, George F. S. Berton, A. L. Wilmot, ~~Daniel Hazen Smith~~, Charles Fisher, William H. Needham, and George F. H. Minchia, Esquires.

*Saint John.*—Robert Parker, Henry Swymmer, John Thomas Murray, W. B. Kinnear, Neville Parker, James Peters, junr. Francis A. Kinnear, Robert F. Hazen, Le Baron Hazen, William Wright, H. N. II. Lugin, M. H. Perley, Robert L. Hazen, Richard Sands, junior, John Johnston, James W. Boyd, and Judah H. Hart, Esquires.

Sain  
nam, S  
and W  
Mir  
jun. Ge  
Peters,  
Dor  
Smith  
Ben  
Non  
Alexan  
Sain  
ander C  
Sain  
Gag  
Rich  
King  
Sunb  
Woo  
Merrill  
Bay  
and Ric

Hon. W  
Harris  
Thomas  
Robert  
John A  
Neville  
Henry  
William  
Alfred  
Sylvest  
George  
Charles  
A. K.  
Daniel  
Franci  
Robert  
Le Bar  
John V  
Willia  
Willia  
Franci  
Peter S  
Moses  
Timott  
James  
John M  
Andre  
Georg  
Robert

*Saint Andrews.*—Harris Hatch, Alfred L. Street, Francis E. Putnam, Samuel H. Whitlock, James W. Chandler, Richard M. Andrews, and William Jack, Esquires.

*Miramichi.*—Thomas H. Peters, J. A. S. Street, William Carman, jun. George Kerr, Charles A. Harding, George Wheeler, and James H. Peters, Esquires.

*Dorchester.*—Edward B. Chandler, James Stewart, and Thomas Smith Sayre, Esquires.

*Bend of Petticodiac.*—William Wiley, Esquire.

*Non-residents practising in Dorchester.*—James S. Morse, and Alexander Stewart, Esquires.

*Saint Stephens.*—George Stilman Hill, Peter Stubs, jun. and Alexander Campbell, Esquires.

*Saint George.*—Samuel G. Andrews, Esquire.

*Gage Town.*—Timothy Robert Wetmore, Esquire.

*Richibucto.*—John W. Weldon, and William Chandler, Esquires.

*Kingston.*—William Simpson, and Edward B. Smith, Esquires.

*Sunbury.*—George W. Cleary, Esquire.

*Woodstock.*—B. Crannall Beardsley, John M. Robinson, Nathaniel Merrill Hazen, Abraham N. Garden, and Charles F. Ketchum, Esqrs.

*Bay Chaleur.*—William End, Andrew Barbarie, Robert H. Peters, and Richard Carman, Esquires.

## PUBLIC NOTARIES.

Hon. W. F. Odell, in the Province.	John Johnston, Esq.	do
Harris Hatch, Esq.	James William Boyd, Esq.	do.
Thomas H. Peters, Esq.	Richard Sands, Esq.	do.
Robert Parker, Esq.	George Wheeler, Esq.	do.
John A. Street, Esq.	Richard Carman, Esq.	do.
Neville Parker, Esq.	William Chandler, Esq.	do.
Henry Swymmer, Esq.	Hugh Munro, Esq.	do.
William End, Esq.	Charles A. Harding, Esq.	do.
Alfred L. Street, Esq.	William Jack, Esq.	do.
Sylvester C. Hewes, Esq.	Alexander Campbell, Esq.	do.
George W. Cleary, Esq.	James H. Peters, Esq.	do.
Charles S. Putnam, Esq.	<i>City of Saint John :</i>	
A. K. S. Wetmore, Esq.	Charles J. Peters, Esquire,	
Daniel L. Robinson, Esq.	William Tyng Peters, Esquire,	
Francis A. Kinnaer, Esq.	William Boyd Kinnear, Esquire,	
Robert F. Hazen, Esq.	James Peters, jun. Esquire.	
Le Baron Hazen, Esq.	<i>City and County of St. John.</i>	
John W. Weldon, Esq.	Horatio Nelson Hicks Lugin, Esq.	
William Wright, Esq.	<i>Charlotte County :</i>	
William Carman, jun. Esq.	William M'Lean,	} Esquires.
Francis E. Putnam, Esq.	John Wilson, and	
Peter Stubs, junr. Esq.	Colin Campbell,	
Moses H. Perley, Esq.	<i>Saint Andrews.</i>	
Timothy R. Wetmore, Esq.	Peter Stubs, Esquire.	
James Stewart, Esq.	<i>Campo Bello.</i>	
John M. Robinson, Esq.	Charles R. Hatheway, Esquire.	
Andrew Barbarie, Esq.	<i>West Isles.</i>	
George Kerr, Esq.	Cavalier H. Jouett, Esquire.	
Robert H. Peters, Esq.	do.	

# ROLL OF BARRISTERS & ATTORNIES IN NEW-BRUNSWICK.

NAMES.	Admitted At- tornies.	Sworn & enrol- led Barristers.
<i>S. Genl.</i> Charles Jeffrey Peters, -	16 July 1794	24 May 1821
B. Crannall Beardsley, -	Oct 1796	17 July 1820
<i>of practice</i> William Franklin Odell, -	18 July 1804	5 July 1806
Thomas Horsfield Peters, -	8 Oct 1806	17 Feb 1819
Harris Hatch, -	2 Feb 1808	17 Feb 1819
William Tyng Peters, -	17 Feb 1814	24 May 1823
John Shannon Morse, (non-resid.)	19 Feb 1814	19 Feb 1814
John Simcoe Saunders, -	18 Feb 1817	18 Feb 1819
John Ambrose Sharman Street, -	22 Feb 1817	14 Oct 1819
<i>Mr. Judge 1854</i> Robert Parker, -	14 Oct 1817	12 July 1820
George Frederick Street, -	15 July 1818	12 July 1820
Henry Swymer, -	15 July 1818	21 May 1823
<i>of practice</i> John Thomas Murray, -	17 Feb 1819	26 Feb 1823
William Boyd Kinnear, -	18 May 1819	24 May 1823
George Pidgeon Bliss, -	13 July 1819	24 May 1823
Neville Parker, -	14 July 1819	14 Oct 1821
Alfred Lock Street, -	11 Oct 1820	24 May 1823
Charles Samuel Putnam, -	11 Oct 1821	14 Oct 1823
Dan. Ludlow Robinson, -	11 Oct 1821	14 Oct 1823
Edward Barron Chandler, -	11 Oct 1821	14 Oct 1823
George Stilman Hill, -	11 Oct 1821	16 July 1826
James Peters, junior, -	12 Oct 1821	18 May 1824
Alexander Stewart, (non-resident)	20 Feb 1822	18 May 1824
George William Cleary, -	10 Oct 1822	12 Oct 1824
William End, -	20 Feb 1823	17 Feb 1824
Charles Peters Wetmore, -	11 July 1823	14 July 1825
Abraham Kierstead S. Wetmore, -	18 Oct 1823	19 Oct 1825
George Jarvis Dibblee, -	18 Oct 1823	19 Oct 1825
Francis Andrew Kinnear, -	18 Oct 1823	19 Oct 1825
William Wiley, -	17 July 1824	17 July 1826
Robert Fraser Hazen, -	16 Oct 1824	20 Oct 1826
Le Baron Hazen, -	16 Oct 1824	20 Oct 1826
John Wesley Weldon, -	21 May 1825	21 May 1827
Francis Ebenezer Putnam, -	16 July 1825	16 July 1827
William Wright, -	16 July 1825	16 July 1827
William Carman, junior, -	15 Oct 1825	5 Feb 1828
Peter Stubs, junior, -	25 Feb 1826	10 July 1828
Horatio Nelson Hicks Lugin, -	25 Feb 1826	18 Oct 1828
William Simpson, -	20 May 1826	10 July 1828
James Stewart, -	24 Feb 1827	5 Feb 1829
John Morris Robinson, -	10 May 1828	10 May 1830
Moses Henry Ferley, -	12 July 1828	16 July 1830
Timothy Eober Wetmore, -	14 July 1828	16 July 1830
Edward Betts Smith, -	18 Oct 1828	14 Oct 1830
Edward Barbarye, -	18 Oct 1828	5 Feb 1831
William Chandler, -	18 Oct 1828	5 Feb 1831
Samuel Hallett Whitlock, -	15 July 1829	16 July 1831

ROLL

Jan  
Geo  
Rob  
Geo  
Rob  
Ric  
Let  
Sar  
Rig  
Stat  
Dan  
John  
Ch  
Ch  
Jan  
Nat  
Th  
Geo  
Ch  
Ric  
W  
W  
Ale  
Geo  
Ab  
Jud  
Ch  
Jan  
Ge  
In all,

He  
He  
Jan  
Ge  
Ch  
Mr

Wm. H  
Perry D  
Henry

ROLL OF BARRISTERS, &c. IN NEW-BRUNSWICK,  
(CONTINUED.)

NAMES.	Admitted At- tornies.	Sworn & enrol- led Barristers.
James Watson Chandler, -	16 Oct 1829	16 Oct 1829
George Kerr, -	17 Oct 1829	9 Feb 1832
Robert Leonard Hazen, -	17 Oct 1829	18 Oct 1831
George Frederick Street Berton, -	6 Feb 1830	9 Feb 1832
Robert Hazen Peters, -	10 May 1830	11 Oct 1832
Richard Sands, junior, -	17 July 1830	11 Oct 1832
Lemuel Allen Wilmot, -	17 July 1830	17 July 1832
Samuel George Andrews, -	17 July 1830	17 July 1832
Richard Garman, -	16 Oct 1830	17 Oct 1832
<i>Stat.</i> Daniel Hales Smith, -	16 Oct 1830	
John Johnston, -	5 Feb 1831	7 Feb 1833
Charles Fisher, -	5 Feb 1831	10 Oct "
Charles Botsford, -	7 May 1831	
James William Boyd, -	16 July 1831	16 July "
Nathaniel Merrill Hazen, -	16 July 1831	16 July "
Thomas Smith Sayre, -	15 Oct 1831	
George Wheeler, -	15 Oct 1831	15 Oct "
Charles Augustus Harding, -	11 Feb 1832	<i>Feb. '34</i>
Richard Milton Andrews, -	5 May 1832	<i>July '34</i>
William Hazen Needham, -	8 May 1832	<i>July '34</i>
William Jack, -	13 Oct 1832	
Alexander Campbell, -	13 Oct 1832	<i>16 Oct. 1834</i>
George Ferdinand H. Minchin, -	13 Oct 1832	<i>16 Oct. 1834</i>
Abraham Nelson Garden, -	9 Feb 1833	
Judah Hammond Hart, -	11 May "	
Charles Frederiek Ketchum, -	13 May "	
James Horsfield Peters, -	13 July "	
George Dixon Street, -	12 Oct "	

In all, 75 Lawyers, and 44 Students, to Michaelmas Term, 1832.

HIS MAJESTY'S CUSTOMS.

PORT OF SAINT JOHN.

Henry Bowyer Smith, Esquire, *Collector.*  
Herbert Cornewall, Esquire, *Comptroller.*  
James Walker, Esquire, *Walter and Searcher.*  
George Hamilton Smith, Esquire, *Walter and Searcher.*  
Charles Drury, jun. Esq. *Admeasurer of Ships and Vessels.*  
Mr. John Longmaid, *Tide Surveyor.*

SUB-COLLECTORS.

Wm. Hannington, Esq. *Shediac.* | James Sayre, Esq. *Dorchester.*  
Perry Dumaresq, Esq. *Dalhousie.* | David Swayne, Esq. *Richibucto.*  
Henry E. Dibblee, Esq. *Woodstock—under the principal officer*  
*of His Majesty's Customs at Saint John.*



PORT OF MIRAMICHI.

John Wright, Esquire, *Collector*.  
George Pinchin, Esquire, *Comptroller*.  
George Henderson, Esquire, *Admeasurer of Vessels*.

PORT OF SAINT ANDREWS.

Alexander Grant, Esquire, *Collector*.  
L. V. Forster, Esquire, *Comptroller*.  
G. B. Richmond, Esquire, *Waiter and Searcher*.

SUB-COLLECTORS :

E. F. Stewart, Esq. *West Isles* | William Frankland, Esq. *Grand and Campo Bello*.  
T. Armstrong, Esq. *St. Stephen*. | A. J. Wetmore, Esq. *St. George*.  
Mr. Joseph Baxter, *Preventive Officer of His Majesty's Customs*.

WAREHOUSE DEPARTMENT.

William Stringer, Esquire, *Warehouse Keeper at Saint John*.  
T. P. Marter, Esquire, *Locker at do*.  
J. Clarke, Esquire, *Warehouse Keeper at St. Andrews*.  
W. Harley, *Locker at ditto*.

PROVINCIAL REVENUE.

Honorable Richard Simonds, *Province Treasurer*.

DEPUTY TREASURERS :

H. G. Clopper, Esq. *Fredericton*. | Wm. Hannington, Esq. *Shediac*.  
B. Robinson, Esq. *St. Andrews*. | D. Stewart, Esq. *Restigouche*.  
C. H. Jouett, Esq. *West Isles*. | John Miller, Esq. *Bathurst*.  
Robert Watson, Esq. *St. Stephens*. | Bill Chappell, Esq. *Bay Verte*.  
T. H. Peters, Esq. *Miramichi*. | William Wiley, Esq. *Peticodiac*.  
M. L. Backhouse, Esq. *Sackville*. | James Ketchum, Esq. *Woodstock*.  
J. W. Weldon, Esq. *Richibucto*. | C. Seymour, Esq. *St. Martins*.

Benjamin C. Chaloner, Esquire, *Gauger of Dutiable Articles and Tide Surveyor at the Port of Saint John*.

David W. Jack, Esquire, *ditto ditto at Saint Andrews*.  
George Henderson, junr. Esquire, *ditto ditto at Miramichi*.  
Robert M'Intosh, Esquire, *Tide Surveyor at Restigouche*.  
Augus M'Intosh, Esquire, *ditto at Bathurst*.  
Benjamin Dawson, Esquire, *Tide Waiter at ditto*.  
William Payne, *Provincial Tide Waiter at Fredericton*.  
John Abram, *ditto ditto, at Saint John*.  
Stephen Humbert, Esquire, *Special ditto at ditto*.  
Cornelius Van Horne, } *Tide Waiters in Charlotte County*.  
William Roberts, }

Collectors of Duties on Horses and Cattle :

James Upham, *Woodstock*, | ~~H. G. Clopper~~, *Fredericton, &c.*  
Benjamin Reed, *Douglas*, | Richard M'Laughlin, *Gloucester*.

# UNIVERSITY OF KING'S COLLEGE—*Fredericton*.

Patron—THE KING.

*Chancellor*—His Excellency the Lieutenant Governor of the Province;  
or, in his absence, The President of the Province.

*Visitor*—The Right Reverend the Lord Bishop of the Diocese.

*President*—The Venerable the Archdeacon of the Province.

*Vice-President*—(*Resident and Acting Principal*)—The Reverend  
Edwin Jacob, D. D.

*Professors*—

}	Reverend Edwin Jacob, D. D.
	Reverend James Somerville, L. L. D.
	Reverend George M'Auley, A. M.

## COUNCIL :

His Excellency the Chancellor,	The Chief Justice,
The President,	Judge Botsford,
The Vice-President,	Speaker of the House of Assembly,
The Professors,	Secretary of the Province.

*Registrar*—Honorable George Frederick Street.

## *The Governor and Trustees of the Madras School in New-Brunswick.*

The Lieutenant Governor or Commander-in-Chief for the time being.  
The Lord Bishop of the Diocese, The Chief Justice,  
The Members of His Majesty's Council, (not being Judges of the Su-  
preme Court.)

The Speaker of the House of Assembly, The Judge of the Admiralty,  
The Mayor and Recorder of Saint John,  
The Ecclesiastical Commissary of the Province,  
The Rector and Church Wardens of Trinity Church in Saint John;  
Together with—The Hon. Edward J. Jarvis, and  
William Scovil, Esquire.

Robert F. Hazen, Esq. *Treasurer*.—J. W. Boyd, Esq. *Secretary*.

## PROVINCIAL VACCINE ESTABLISHMENT OF NEW- BRUNSWICK.

### CENTRAL STATION—SAINT JOHN:

His Excellency the Lieutenant Governor and His Majesty's Council.  
Patrons of the Institution.

Honorable William Black, } Directors of the Institution.

### COMMITTEE :

Fredericton—The Revd. James Somerville, L. L. D. and the Hon.  
William F. Odell.

Saint Andrews—Reverend Jerome Alley, D. D.

### VACCINATING SURGEONS :

Saint John—John Boyd, Esquire, M. D.

Fredericton—The Medical Officer in charge of the Troops.



**PROVINCIAL MARINE HOSPITAL,**  
*For the Relief of Sick and Disabled Seamen.*

**Commissioners** :—The Hon. William Black, Ralph M. Jarvis, Esq.,  
William Scovil, and John Ward, junr. Esquires.

**Physician & Surgeon**—John Boyd, Esquire, M. D.

*Faculty of Physicians & Surgeons of N. Brunswick.*

**ORDINARY MEMBERS.**

Alexander Boyle, M. D.  
T. Paddock, Surgeon,  
T. Walker, Surgeon,  
H. Cook, Surgeon,  
J. Dormer, Surgeon,  
M. Backhouse, Surgeon,  
T. Emerson, Surgeon,  
G. E. Baldwin, Surgeon,  
W. Wilson, Surgeon,  
Jacob W. Barker, Surgeon,  
J. Paddock, Surgeon,  
William Livingston, Surgeon,  
Alexander Pidler, Surgeon.  
G. J. Harding, M. D.  
Peter Marter, Surgeon.  
Samuel Gove, Surgeon.

**HONORARY MEMBERS.**

Jo. Bruce Almon, M. D.

J. C. Warren, M. D.  
I. Q. Short, M. D.—*Deputy In-*  
*spector of Hospitals.*  
J. Bell, Assistant Surgeon, 81st  
A. Duncan, M. D. [Regt.  
Thomas Shortt, M. D.  
Jno. Johnston, M. D.  
G. J. Guthrie, M. D.  
David Hossack, M. D.  
J. W. Francis, M. D.  
J. Houslip,  
A. Baxter, M. D.—*Inspector of*  
*Military Hospitals.*  
Ed. Kiely, Esq. R. N.  
W. Macartney, M. D., 81st Regt.  
Collin Allan, M. D.—*Surgeon*  
*to the Forces.*  
Henry Davis, M. D.  
S. M. Hadaway—*Assistant Sur-*  
*geon to the Forces.*

*New-Brunswick Agricultural and Emigrant Society.*

His Excellency the Lieutenant Governor, Patron.

*Deacel.* { The Honorable Chief Justice Saunders, President.

{ The Honorable Judge Bliss, } Vice Presidents.

“ Judge Botsford, }

“ Judge Chipman }

“ Frederick P. Robinson, }

“ Harry Peters, }

“ Richard Simonds, }

Peter Fraser, }

James Miles, }

Richard Ketchum, }

Joho Allen, }

William Crane, }

Samuel Freeze, }

Thomas Wyer, }

Thomas O. Miles, }

Hugh Munro, }

John W. Weldon, }

Members of the  
Central  
Committee.

William Taylor, Esquire, Secretary and Treasurer.

*Provincial Agents for Emigrants.*

Saint John—Alexander Wedderburn, Esquire,

Miramichi—Henry Cunard, Esquire,

Saint Andrews—Beverley Robinson, Esquire,

# NEW-BRUNSWICK AUXILIARY BIBLE SOCIETY.

Patron—His Excellency the Lieutenant Governor.

President—John M. Wilmot, Esquire.

Vice Presidents—Charles J. Peters, John Ferguson, William B. Kinnear, and Robert Parker, Esquires.

Treasurer—Angus M'Kenzie, Esquire.

Secretary—Mr. James Paterson, Rector of the Grammar School.

Depository—Store of Mr. L. H. DeVeber, Prince Wm. Street, St. John.

## BRANCH SOCIETIES.

*St. John Ladies' Association.*

President—Mrs. Neville Parker,

Treasurer—Mrs. Ferguson,

Secretary—Miss Wiggins,

*Saint Stephen.*

President—

V. President—T. Armstrong, Esq.

Treasurer—Anron Upton, Esq.

Secretary—Mr. David A. Rose.

*Grand Lake.*

President—Mr. John Robertson,

Vice-President—Mr. G. Clark,

Treasurer—Mr. David Palmer,

Secretary—Mr. John Palmer.

*Sussex Vale.*

President—George Morton, Esq.

Vice-Pradt.—A. C. Evanson, Esq.

Secretary—Mr. J. R. Leggett.



# BANK OF NEW-BRUNSWICK.

Solomon Nichols, Esquire, *President.*

DIRECTORS :

Thomas Barlow  
Hon. Ward Chipman,  
Robt. W. Crookshank,  
Noah Disbrow,  
Henry Gilbert,  
Hugh Johnston,

Esquires.

Robert F. Hazen,  
Nehemiah Merritt,  
Neville Parker,  
William Scovil,  
Charles Simonds,  
Stephen Wiggins,

Zalmon Wheeler, Esquire, *Cashier,*  
Neville Parker, Esquire, *Solicitor,*  
James W. Boyd, Esquire, *Notary.*



# NEW-BRUNSWICK FIRE INSURANCE COMPANY.

John M. Wilmot, Esquire, *President.*

DIRECTORS :

David Hatfield,  
James Hendricks,  
Charles Simonds,  
John Boyd, M. D.  
F. A. Kinneear,  
John Hammond,

Esquires.

Gilbert T. Ray,  
Robert F. Hazen,  
Ralph M. Jarvis,  
Daniel Ansley,  
William Jarvis,  
John Kinnear,

Robert F. Hazen, Esquire, *Solicitor.*  
Daniel Jordan, Esquire, *Secretary.*

# NEW-BRUNSWICK MINING COMPANY.

N. Merritt, Esquire, President.

## DIRECTORS.

Robert Parker,	} Esquires.	Stephen Wiggins,
Hugh Johnston,		John M. Wilmot,
Henry Gilbert,		E. D. W. Ratchford,
John Ward, junior,		James Kirk,
Robert F. Hazen,		William Leavitt,
George D. Robinson,		Robert W. Crookshank,
T. L. Nicholson, Esquire, Secretary.		

## CLERGY OF THE ESTABLISHED CHURCH.

The Right Rev. JOHN, Lord Bishop of Nova-Scotia, exercising by His Majesty's Letters Patent; Episcopal Jurisdiction over the Province.

Venerable George Coster, A. M. Archdeacon.

- Rev. Benjamin G. Gray, D. D. Rector of Saint John.
- Rev. William Gray, Assistant Missionary at Saint John.
- Rev. Gilbert L. Wiggins, A. M. Assistant do.—officiating at Portland.
- Rev. Frederick Coster, Rector of Carleton.
- Rev. George Coster, M. A. Rector of Fredericton.
- Rev. Abraham Wood, Rector of Waterborough.
- Rev. Jerome Alley, D. D. Rector of Saint Andrews.
- Rev. Skeffington Thompson, L. L. D. Rector of Saint Stephen.
- Rev. James Somerville, L. L. D. Rector of Douglas.
- Rev. Raper Milner, Rector of Mangerville.
- Rev. Samuel D. L. Street, Rector of Woodstock.
- Rev. Samuel R. Clarke, Rector of Gagetown.
- Rev. Oliver Arnold, Rector of Sussex.
- Rev. Nelson Arnold, Assistant Missionary at Sussex.
- Rev. Elias Scovil, Rector of Kingston.
- Rev. Christopher Milner, Rector of Sackville.
- Rev. —————, Rector of Westfield.
- Rev. Samuel Bacon, Rector of Miramichi.
- Rev. Samuel Thomson, Rector of Saint-George.
- Rev. W. Walker, Rector of Hampton.
- Rev. Alexander C. Somerville, Rector of Bathurst.
- Rev. Addington Parker, Rector of Prince William.
- Rev. Richard Wiggins, Minister at Westmorland.
- Rev. George S. Jarvis, Rector of Hampstead.
- Rev. John Black, Rector of Shediac.
- Rev. George M'Cawley, occasional Visiting Missionary.



## ESTABLISHED CHURCH OF SCOTLAND.

- Saint John—Rev. Robert Wilson, A. M.
- Saint Andrews—Rev. Alexander M'Lean.
- Newcastle, (Miramichi,)—Rev. James Souter, A. M.
- Restigouche—Rev. James Steven.

Right Re

Saint Joh  
Frederic  
Miramich  
St. Andr  
Richibuc  
Nepisigu  
Caraquet

Wesley

Saint J  
Freder  
St. Ste  
Westm  
Bridge  
Annapp  
Sussex  
Miram  
Saint A  
Wakef  
Petite

Saint Joh  
Frederic  
Waterbor  
Prince V  
Norton a  
— Re  
Miramich  
St. Geor

PR  
IN CONN  
C  
N  
N  
R

Fredericton—Reverend John Byrkmire, A. M.  
 Saint James—Rev. Peter M'Intyre.  
 Rev. Mr. Hannay, Itinerating Missionary for the Province.  
 Rev. Alexander Farquharson, Missionary at Cape Breton, in  
 connexion with the Presbytery of New Brunswick.

ROMAN CATHOLIC CLERGY.

Right Rev. Aeneas B. M'Eachern, Bishop of Charlotte Town, P. E. I.  
 and Vicar Apostolic of New-Brunswick.

Reverend William Dollard, Vicar General.

Saint John—Rev. James Dunphy,	Memramcook—Rev. Mr. Guay.
Fredericton—Rev. M. M'Sweeney,	Chediac—Rev. Mr. Gagnon, (secu.
Miramichi—Rev. Michael Eagen,	Madawaska—Rev. Mr. Sirois,
St. Andrews—Rev. J. Cummins,	Chimigoui—Rev. Mr. Paquet,
Richibucto—Rev. Mr. Tetrau,	Village of Savages—Rev. Mr. Bel-
Nepisiguit—Rev. Mr. Naud,	leau.
Caraget—Rev. Mr. Fortier,	

Wesleyan Missionaries—New-Brunswick District.

Saint John—Rev. Sampson Bushy, and Rev. William Smithson.  
 Fredericton—Rev. Enoch Wood. Sheffield—Rev. Wm. Murray.  
 St. Stephen's & St. David's—Rev. J. B. Strong, & Rev. J. F. Bent.  
 Westmorland—Rev. Michael Pickles.  
 Bridgetown, (N. S.)—Rev. Richard Williams.  
 Annapolis, (N. S.)—Rev. Arthur M'Nutt.  
 Sussex Vale—Rev. George Johnston.  
 Miramichi—Rev. Albert Desbrisay, and Rev. Henry Daniel.  
 Saint Andrews—Rev. Alexander W. M'Leod.  
 Wakefield and Woodstock—Rev. Samuel Joll.  
 Petitcodiac—Rev. Wm. Baunister. Bathurst—Rev. R. Douglas.

Baptist Ministers in New-Brunswick.

Saint John—Rev. F. W. Miles,	Hopewell—Stevens.
Fredericton—	Wickham—
Waterborough—Rev. J. Marsters,	Dorchester—Rev. Wm. Sears.
Prince Wm.—Rev. L. Hanimond.	Salisbury—Rev. Joseph Crandall.
Norton and U. Hampton—Rev. D.	Sackville—Rev. Robert Davis.
S. Bancroft.	L. Hampton—Rev. D. Crandall.
— Rev. Benjamin Coy.	Sussex Vale—Rev. Titus Stone.
Miramichi—Rev. James Towzer.	New Canan—Rev. Chas. Lewis.
St. George—Rev. S. Robinson.	

PRESBYTERIAN CHURCH OF NOVA-SCOTIA,

IN CONNEXION WITH THE UNITED ASSOCIATE SYNOD, SCOTLAND.

Chatham—Reverend John M'Curdy.  
 New Mills and Bathurst—Reverend James Waddell.  
 New Carlisle, &c. (Bay Chaleur)—Rev. Anthony F. M'Cabe.  
 Richibucto—Rev. \_\_\_\_\_

## SUPERVISORS OF GREAT ROADS.

James A. Allanshaw—Fredericton to the Canada line.  
 John M'Donald—Fredericton to St. John, by the Nerepis.  
 L. B. Rainford—Fredericton to Northumberland.  
 Alex. Goodfellow—Chatham to Richibucto, and Newcastle to Foreins'.  
 Dudley Perley—Richibucto to Chediac.  
 Joseph Read—Foreins' to Restigouche.  
 John Robb—Chediac to Bend of Peticodiac, and Dorchester to Chediac.  
 George Anderson—Carleton to Saint Andrews.  
 Benjamin L. Peters—Saint John to the Hammond River.  
 George H. Hazen—Hammond River to Westmorland.  
 Nathaniel Hubbard—Short Ferry to the Finger Board.  
 Caleb Wetmore—Head of Belisle to forks of the road at A. Hennigar's.  
 A. E. Botsford—King's County line to the Missequash.



## POST OFFICE DEPARTMENT.

JOHN HOWE, junior, Esquire, Deputy Post-Master General for Nova-  
 Scotia and New-Brunswick.

### POST-MASTERS IN NEW-BRUNSWICK.

Charles Drury, Esq. Saint John. W. B. Phair, Esq. Fredericton. G. F. Campbell, Esq. Saint Andrews. T. Armstrong, Esq. St. Stephen. Gideon Knight, Esq. St. George. Thomas Keillor, Esq. Dorchester.	A. S. Gore, Esq. Peticodiac Bend. James Caie, Esq. Miramichi. Asa Davidson, Esq. Kingston. John C. Vail, Esq. Sussex Vale. John W. Weldon, Esquire, Richibucto. T. M. Deblois, Esq. Bathurst.
--	--

*Days of arrival of the Mail at, and departure from, Saint John,  
 New-Brunswick.*

**MONDAY**—For Fredericton and Canada, by the Nerepis, at 11 A. M.  
**TUESDAY**—From Halifax, Annapolis, &c. (via Digby,  
 From St. Andrews and the United States, by land, at noon.  
**WEDNESDAY**—For Halifax, Picton, Miramichi, Richibucto, Cumber-  
 land, Dorchester, Sussex Vale, Kingston, &c. at 1 o'clock, P. M.  
**THURSDAY**—From Fredericton, Quebec, and Montreal, at 11 A. M.  
**FRIDAY**—For St. Andrews, St. Stephen, &c. and the United States,  
 at 10 A. M.  
**SATURDAY**—From Halifax, Miramichi, Dorchester, Sussex Vale, &c.  
 at 10 A. M.  
 For Halifax, Annapolis, &c. (via Digby,) at 4 P. M.

Letters must be in the Office half an hour before the times stated for closing the Mails.

Mails are also forwarded by the steam-boats, during the season, and closed the evening previous to their departure.

The inland postage on all letters for Europe, Newfoundland, the West-Indies, and the United States, must be paid at the rate of 9d. for a single letter, and so in proportion for a double or treble packet, or they cannot be forwarded.

John  
 quires, J  
 John  
 Clement  
 Emerson  
 Harrison  
 Miles (o  
 Edward  
 Henry  
 and Inf  
 Henry  
 W. T  
 Charle  
 D. L. Ro  
 P. Wetm  
 Needham  
 missioner  
 Daniel  
 preme C  
 J. A. M  
 John Rob  
 lemnizing  
 Willia  
 Needham

Hon  
 Hon  
 Hon  
 C. J

M  
 J  
 M

R  
 H  
 H  
 P  
 J  
 H  
 J

Terms—

## COUNTY OF YORK.

John Allen, Peter Fraser, Thomas C. Lee, and John Robinson, Esquires, Justices of the Inferior Court of Common Pleas.

John Allen, Peter Fraser, Thomas C. Lee, John Robinson, Peter Clements, Jacob Ellegood, Daniel Morehouse, Henry Smith, Thomas Emerson, Thomas Jones, Jedediah Slason, George Minchin, James Harrison, Jacob Allen, William Davidson, Patrick Campbell, and Jas. Miles, (of the *Quorum*) and Ross Curry, Esqrs. Justices of the Peace. Edward W. Miller, Esquire, High Sheriff.

Henry G. Clopper, Esq. Keeper of the Rolls and Clerk of the Peace and Inferior Court of Common Pleas.

Henry G. Clopper, Esquire, Register of Deeds and Wills.

W. Taylor, Esq. Coroner. Mark Needham, Esq. County Treasurer.

Charles J. Peters, G. F. Street, G. P. Bliss, Hon. J. S. Saunders, D. L. Robinson, G. J. Dibblee, C. S. Putnam, A. K. S. Wetmore, C. P. Wetmore, G. F. S. Bertou, L. A. Wilmat, Charles Fisher, W. H. Needham, G. F. H. Minchin, and Daniel Morehouse, Esquires, Commissioners for taking Affidavits in the Supreme Court.

Daniel Morehouse, Esquire, Commissioner for taking Bail in the Supreme Court.

J. A. M'Laughlan, John Allen, Jacob Ellegood, Daniel Morehouse, John Robinson, and James Harrison, Esquires, Commissioners for Solemnizing Marriage.

William Taylor, Thomas C. Everitt, Francis E. Beckwith, and Mark Needham, Licensed Auctioneers.



### *Firewards in Fredericton.*

Honorable William F. Odell,	Jedediah Slason, Esquire,
Honorable George Shore,	G. Minchin, Esquire,
Honorable Thomas Baillie,	Honorable G. F. Street,
C. J. Peters, Esquire;	Mark Needham, Esquire.



### *Fredericton Union Fire Club.*

Mr. Thomas R. Robertson, President.  
John A. Beckwith, Esquire, Vice-President.  
Mr. Francis E. Beckwith, Treasurer and Secretary.



### *Fredericton Library.*

Reverend Dr. Somerville, President.  
Honorable George F. Street, Vice-President.  
Henry G. Clopper, }  
Peter Fraser, } Committee.  
J. E. Woolforde, }  
Henry G. Clopper, Esquire, Secretary and Treasurer.  
John Baird, Librarian.

Terms — £5 on admission, and 20s. annually. Contains 1200 volumes.



## Frederickton Savings' Bank.

His Excellency the Lieutenant-Governor, Patron.  
 His Honor the Chief Justice, President.  
 Peter Fraser, Esquire, Vice-President.  
 James Taylor, senior, Esquire, Treasurer.  
 Henry G. Clopper, Esquire, Secretary  
 Mr. John F. Taylor, Cashier and Register.

## Frederickton Auxiliary Bible Society.

President—William Taylor, Esquire.  
 Treasurer—Peter Fisher, Esq. Secretary—James Taylor, Jun. Esq.

## Frederickton Society of Saint Andrew.

Peter Fraser, Esquire, President.  
 James Taylor, senior, Esquire, Vice-President.  
 Reverend James Somerville, L. L. D. Chaplain.  
 Mr. John F. Taylor, Treasurer.  
 Mr. John Gregory, Secretary.

## Frederickton Society of Saint Patrick.

*This Society  
 not in  
 existence  
 having died  
 a natural  
 death*

Honorable Thomas Baillie, President.  
 George Minchin,  
 Thomas L. Langen, } Esquires, } Vice-Presidents.  
 Mr. Joseph Beck, Treasurer  
 Mr. Matthew Brannen, Secretary.  
 Mr. Stephen White, Assistant Secretary.

## Frederickton Society of Saint George.

Honorable John Saunders, President.  
 Honorable George Shore,  
 J. E. Woolford, Esquire, } Vice-Presidents.  
 Honorable G. F. Street,  
 Venerable Archdeacon Coster,  
 Reverend Edwin Jacob, D. D. } Chaplains.  
 Hon. G. F. Street, Treasurer and Secretary.

## COUNTY OF CHARLOTTE.

Hugh M'Kay, Peter Stubs, Thomas Wyer, and the Hon. James Allanshaw,—Justices of the Inferior Court of Common Pleas.  
 Hugh M'Kay, Peter Stubs, Thomas Wyer, Honorable James Allanshaw, Peter M'Callum, Thomas Armstrong, William Frankland, Reverend Jerome Alley, John Wilson, Tristram Moore, Patrick Clinch, David Mowatt, Thomas Jones, Samuel Abbot, William Ker, George M. Porter, James White, James Rait, John Chaffey, John

Wilkinson  
 Douglass,  
 (of the Q  
 Harris  
 and Inferi  
 Colin C  
 Harris  
 Donald  
 David V  
 The Jur  
 seph N. C  
 Putnam, S  
 Andrews,  
 Wilford F  
 Supreme C  
 Hugh M  
 Abbott, Jo  
 Abbot, an  
 in the Sup  
 Hugh M  
 fey, Thom  
 missioners  
 J. H. W  
 Abbot, an

Committee

Pub

Directors

Me

Commission



Wilkinson, Wilford Fisher, Joshua Knight, Cavalier H. Jouett, James Douglass, William Garnett, Nehemiah Marks, John M'Lauchlan, (of the Quorum,) and James Frink, Esquires, Justices of the Peace.

Harris Hatch, Esquire, Keeper of the Rolls and Clerk of the Peace and Inferior Court of Common Pleas.

Colin Campbell, Esquire, High Sheriff.

Harris Hatch, Esquire, Register of Deeds and Wills.

Donald M'Laughlan, and David Mowatt, Esquires, Coroners.

David W. Jack, County Treasurer.

The Justices of the Pleas, together with Charles R. Hatheway, Joseph N. Clark, Harris Hatch, Alfred L. Street, George S. Hill, F. E. Putnam, Samuel H. Whitlock, George Ker, Thomas Chandler, S. G. Andrews, R. M. Andrews, Alexander Campbell, Samuel Abbot, and Wilford Fisher, Esquires, Commissioners for taking Affidavits in the Supreme Court.

Hugh M'Kay, Colin Campbell, Peter Stubs, Thomas Wyer, Samuel Abbott, Joseph N. Clarke, Charles R. Hatheway, Thos. Jones, Samuel Abbot, and Wilford Fisher, Esquires, Commissioners for taking Bail in the Supreme Court.

Hugh M'Kay, Tristram Moore, Hon. James Allanshaw, James Chafey, Thomas Wyer, P. M'Callum, and John Wilkinson, Esquires, Commissioners for Solemnizing Marriage.

J. H. Whitlock, William Garnett, Adam Jack, Jas. Boyd, Samuel Abbot, and Gilbert Ruggles, Licensed Auctioneers.

---

### *Charlotte County Bank.*

Harris Hatch, Esquire, President.

DIRECTORS :

Thomas Wyer,	} Esquires.	John Wilson,
James Campbell,		John M'Lauchlan,
James Rait,		John M'Alister,
John M'Master,		James Douglas,

Peter Stubs, Esquire, Cashier.

---

### *Charlotte County Savings' Bank.*

Thomas Wyer, Esquire, President.

Peter Stubs, Esquire, Cashier.

Committee—H. Hatch, S. Frye, J. M'Master, P. Stubs, J. Parkinson, W. Kerr, and J. M'Laughlan, Esquires.

---

### *Public Grammar School in Saint Andrews.*

President—Reverend Dr. Alley.

Directors :—Colin Campbell, David W. Jack, Thomas Wyer, Dr. S. Frye, and Peter Stubs, Esquires.

Master—Reverend John Cassell.

---

### *Marine Hospital—Saint Andrews.*

Commissioners—Harris Hatch, Wm. Ker, and D. W. Jack, Esquires.

## COUNTY OF WESTMORLAND.

Samuel Gay, Rufus Smith, John Keillor, William Crane, and Amos E. Botsford, Esquires, Justices of the Inferior Court of Common Pleas.

Samuel Gay, Rufus Smith, John Keillor, James Easterbrooke, Andrew Weldon, Edward Dixon, John Chapman, William Crane, junior, William Hannington, James Sayre, William Scott, Phillip Palmer, Christopher Milner, Malcolm Wilmot, John Smith, Bill Chappell, Humphrey Gilbert, Marmaduke L. Backhouse, Harman Trueman, Amos E. Botsford, (*of the Quorum*,) and Robert Scott, Esquires, Justices of the Peace.

William P. Sayre, Esquire, High Sheriff.

Edward B. Chandler, Esquire, Keeper of the Rolls and Clerk of the Peace and Inferior Court of Common Pleas.

John Edgett, and Charles F. Allison, Esquires, Coroners.

Marmaduke L. Backhouse, Esquire, Register of Deeds and Wills.

Samuel Gay, Rufus Smith, John Keillor, William Crane, Amos E. Botsford, Edward B. Chandler, William Wiley, James Stewart, Thos. B. Sayre, and Abel S. Gore, Esquires, Commissioners for taking Affidavits to be read in the Supreme Court; and the Justices of the Common Pleas, together with Lewis Trites, and Abel S. Gore, Esquires, Commissioners for taking Bail in the same.

Rufus Smith, John Keillor, William Crane, William Scott, William Hannington, William Chapman, Bill Chappell, Lewis Trites, and Robert Scott, Esquires, Commissioners for Solemnizing Marriage.

Thomas Trenholm, Andrew Weldon, jun. and George Pitfield, Esquires, Licensed Auctioneers.

## COUNTY OF NORTHUMBERLAND.

Alexander Davidson, John Fraser, William Abrams, Esquires, and Hon. Joseph Cunard, Justices of the Inferior Court of Common Pleas.

Alexander Davidson, John Fraser, William Abrams, Hon. Joseph Cunard, John Clarke, John T. Williston, William Joplin, Alexander Goodfellow, John Wright, Christopher Clarke, Dudley Perley, John Nesmith, Donald M'Kay, Robert Doak, John Campbell, James Gilmour, J. Donald, S. Henderson, (*of the Quorum*,) and Thomas C. Allan, Esquires, Justices of the Peace.

Richard Samuel Clarke, Esquire, High Sheriff.

Thomas H. Peters, Esquire, Keeper of the Rolls, and Clerk of the Peace and Inferior Court of Common Pleas.

J. Wright, J. Anderson, and J. M. Johnson, Esquires, Coroners.

J. A. Street, Esquire, Register of Deeds and Wills.

William Loch, John Nesmith, Alexander Davidson, Hon. Joseph Cunard, Robert Doak, Christopher Clarke, and John J. Donald, Esquires, Commissioners for taking Bail in the Supreme Court.

John Nesmith, Thomas H. Peters, J. A. S. Street, William End, William Garman, junr. George Kerr, C. A. Harding, Hon. Joseph Cunard, Robert Doak, Christopher Clarke, and John J. Donald, Esquires, Commissioners for taking Affidavits in the Supreme Court.

William Abrams, Alexander Goodfellow, Donald M'Kay, Robert Doak, and John Campbell, Esquires, Commissioners for Solemnizing Marriage.

William  
Wright,  
ston, Pa  
D. Carin

Henry  
and Isaac  
Pleas.

Henry  
Isaac Pe  
Brittain,  
C. Vail,  
ham, Eb  
the Quo

Walter  
Edward  
Peace an

Ninyon  
Henry  
Frost, E

Walter  
Grammar  
Honor

Commiss  
Coffin, E

Affidavit  
Henry  
John C.  
William  
riage.

Caleb  
Humbert

Hon. J  
Justices  
Valent

Richard  
Thomas  
(of the  
Peace.

Nathan  
T. R.

Peace an  
Valent  
Thoma  
Coroner

Timot  
the Gran

William Davidson, Richard Samuel Clarke, Patrick Henderson, Jas. Wright, John Bell, James Davidson, Thomas C. Allan, John M. Johnston, Patrick Brunnen, C. Clarke, Pinchas Williston, and Henry C. D. Carman, Licensed Auctioneers.

## KING'S COUNTY.

Henry Nase, Oliver Arnold, David B. Wetmore, George H. Hazen, and Isaac Perry, Esquires, Justices of the Inferior Court of Common Pleas.

Henry Nase, Oliver Arnold, David B. Wetmore, George H. Hazen, Isaac Perry, Thomas Ketchum, Rufus Rulofson, John Smith, James Brittain, Gould Picket, Benjamin B. Crawford, Henry A. Scovil, John C. Vail, A. C. Evanson, William M'Leod, John Barbarie, Joshua Upham, Ebenezer Smith, Azor Hoyt, Isaac Haviland, John Humbert, (of the Quorum,) and Samuel Foster, Esquires, Justices of the Peace.

Walter Bates, Esquire, High Sheriff.

Edward Betts Smith, Esquire, Keeper of the Rolls and Clerk of the Peace and Inferior Court of Common Pleas.

Ninyon Chaloner, Esquire, Register of Deeds and Wills.

Henry Nase, David B. Wetmore, George N. Arnold, and William Frost, Esquires, Coroners.

Walter Bates, and Edward G. N. Scovil, Esquires, Trustees of the Grammar School.

Honorable John Coffin, Elias Scovil, and D. B. Wetmore, Esquires, Commissioners for taking Bail on the Supreme Court. Honorable John Coffin, Elias Scovil, and William Simpson, Commissioners for taking Affidavits in the same.

Henry Nase, David B. Wetmore, William M'Leod, Henry A. Scovil, John C. Vail, Joshua Upham, Isaac Perry, James Brittain, and William H. Rulofson, Esquires, Commissioners for Solemnizing Marriage.

Walter Wetmore, Simon Baxter, John Sheek, William Frost, and John Humbert, Licensed Auctioneers.

## QUEEN'S COUNTY.

Hon. Harry Peters, Valentine H. Peters, Samuel Scovil, Esquires, Justices of the Inferior Court of Common Pleas.

Valentine H. Peters, Samuel Scovil, John Colwell, John Golding, Richard Yeamans, Abiathar Camp, Stephen Golding, William Foshay, Thomas Underhill, Thomas T. Hewlett, John Earle, John Humphrey, (of the Quorum,) and Charles Harrison, Esquires, Justices of the Peace.

Nathaniel Hubbard Deveber, Esquire, High Sheriff.

T. R. Wetmore, Esquire, Keeper of the Rolls, and Clerk of the Peace and Inferior Court of Common Pleas.

Valentine H. Peters, Esquire, Register of Deeds and Wills.

Thomas Gilbert, John Earle, and Thomas T. Hewlett, Esquires, Coroners.

Timothy R. Wetmore, and Nathaniel Deveber, Esquires, Trustees of the Grammar School.

Valentine H. Peters, and Samuel Scovil, Esquires, Commissioners for taking Bail in the Supreme Court.—Valentine H. Peters, Samuel Scovil, and T. R. Wetmore, Esquires, Commissioners for taking Affidavits in the Supreme Court.

Samuel Scovil, Harry Peters, John Colwell, Stephen Golding, William Foshay, Thomas Underhill, Thomas T. Hewlett, John Earle, and John Humphrey, Esquires, Commissioners for Solemnizing Marriage.  
Nathaniel Hubbard, Esquire, Licensed Auctioneer.

---

## COUNTY OF SUNBURY.

David Burpe, Thomas O. Miles, and Theodore V. W. Clowes, Esquires, Justices of the Inferior Court of Common Pleas.

David Burpe, Thomas O. Miles, Theodore V. W. Clowes, Isaac Hubbard, Clapman Smith, Stephen Peabody, Charles F. Street, Cushman Hatheway, Nathaniel Hubbard, James Tilley, George Hayward, Chas. Hazen, (*of the Quorum*), and William Hoyt, Esquires, Justices of the Peace.

John Hazen, Esquire, High Sheriff.

George F. S. Berton, Esquire, Keeper of the Rolls, and Clerk of the Peace, and Inferior Court of Common Pleas.

Nathaniel Hubbard, Esquire, Register of Deeds and Wills.

James Hazen, George B. Covert, and Enoch Barker, Esquires, Coroners.

Isaac Hubbard, Elijah Miles, David Burpe, and Henry T. Partelow, Esquires, Commissioners for taking Bail in the Supreme Court.

Isaac Hubbard, Elijah Miles, David Burpe, George W. Cleary, and Henry T. Partelow, Esquires, Commissioners for taking Affidavits in the Supreme Court.

David Burpe, Thomas O. Miles, John Hazen, and Stephen Peabody, Esquires, Commissioners for Solemnizing Marriage.

---

## COUNTY OF KENT.

John Wheaton, Samuel M'Kean, and George Pagan, Esquires, Justices of the Inferior Court of Common Pleas.

John Wheaton, Samuel M'Kean, George Pagan, George Thompson, Thomas Ostle, John Jardine, John Bowser, William Hannington, (*of the Quorum*), and Thomas Powell, Esquires, Justices of the Peace.

Thomas Lansdowne, Esquire, High Sheriff.

John Wesley Weldon, Esquire, Keeper of the Rolls, and Clerk of the Peace, and Inferior Court of Common Pleas.

Sylvester C. Hewes, James Long, and George Pagan, Esquires, Coroners.

John W. Weldon, and William Chandler, Esquires, Commissioners for taking Affidavits to be read in the Supreme Court.

George Pagan, and John Wheaton, Esquires, Commissioners for taking Bail in the Supreme Court.

John Wheaton, John Jardine, John Bowser, and William Hannington, junior, Esquires, Commissioners for Solemnizing Marriage.

Michael Samuel, Licensed Auctioneer.

Perry D  
art, and J  
mon Pleas  
Perry D  
art, Joseph  
lian Pleas  
Hunter, W  
I. A. Dum  
rum,) and  
William  
and Inferi  
John An  
Robert  
min Daws  
preme Cou  
Hugh M  
Benjamin  
preme Cou  
Hugh M  
James Bla

B. C. B  
tices of the  
B. C. B  
Mark Ne  
Sharp, Ar  
Peace and  
John F.  
John M.  
Peace and  
John Be  
John Be  
B. C. B  
Hazen, an  
Affidavits  
Richard  
preme Cou  
Richard  
B. Walsh,  
Richard

---

## CITY

The  
The  
Benjamin  
Horne, Wi  
and of the C

## COUNTY OF GLOUCESTER.

Perry Dumaresq, Robt. Ferguson, John Montgomery, Dugald Stewart, and Joseph Read, Esquires, Justices of the Inferior Court of Common Pleas.

Perry Dumaresq, Robert Ferguson, John Montgomery, Dugald Stewart, Joseph Read, John Miller, James Blackhall, Adam Ferguson, William Fleming, Benjamin Dawson, John Young, Harvey Adams, Andrew Hunter, William Napier, Henry W. Baldwin, Charles Coughlan, Perry I. A. Dumaresq, John Richey, John Doran, John Duncan, (of the Quorum,) and Robert Robinson, Esquires, Justices of the Peace.

William End, Esquire, Keeper of the Rolls, and Clerk of the Peace and Inferior Court of Common Pleas.

John Anderson, Joseph Read, and John F. Wheeler, Esqrs. Coroners.

Robert H. Peters, Andrew Barbarie, Richard Carman, and Benjamin Dawson, Esquires, Commissioners for taking Affidavits in the Supreme Court.

Hugh Munro, Perry Dumaresq, Adam Ferguson, Joseph Read, and Benjamin Dawson, Esquires, Commissioners for taking Bail in the Supreme Court.

Hugh Munro, Perry Dumaresq, Robert Ferguson, John Young, and James Blackhall, Esquires, Commissioners for Solemnizing Marriage.

## COUNTY OF CARLETON.

B. C. Beardsley, John Bedell, and Richard Ketchum, Esquires, Justices of the Inferior Court of Common Pleas.

B. C. Beardsley, John Bedell, Richard Ketchum, James Upham, Mark Needham, George Morehouse, Josiah Brown, John Dibble, Adam Sharp, Arthur B. Walsh, and Francis Rice, Esquires, Justices of the Peace and Quorum, and Leonard R. Coombs, Esq. Justice of the Peace.

John F. Winslow, Esquire, High Sheriff.

John M. Robinson, Esquire, Keeper of the Rolls, and Clerk of the Peace and Inferior Court of Common Pleas.

John Bedell, Esquire, Register of Deeds and Wills.

John Bedell, junior, and Hilkiah Kearney, Esquires, Coroners.

B. C. Beardsley, E. B. Smith, John M. Robinson, Nathaniel M. Hazen, and Richard Ketchum, Esquires, Commissioners for taking Affidavits in the Supreme Court.

Richard Ketchum, Esquire, Commissioner for taking Bail in the Supreme Court.

Richard Ketchum, George Morehouse, Josiah Brown, and Arthur B. Walsh, Esquires, Commissioners for Solemnizing Marriage.

Richard English, and Jeremiah M. Connell, Licensed Auctioneers.

## CITY AND COUNTY OF SAINT JOHN.

The Mayor and } Justices of the Mayor's Court.  
The Recorder, }

Benjamin Stanton, Daniel Ausley, Thomas Harding, Gregory Van Horne, William Olive, and Geo. Bond, Esquires, Justices of the Peace and of the Quorum.



John Ward, William Scovil, James Peters, Thomas Millidge, Ralph M. Jarvis, Charles Simonds, G. C. Carman, Zebulon Wheeler, John Jordan, Allan Otty, George Anderson, James Moran, Hugh Johnston, Henry Gilbert, Robert W. Crookshank, senior, Noah Disbrow, senior, Robert Ellis, Robert Payne, Archibald Menzies, George Brown, James Hendricks, Benjamin L. Peters, Nehemiah Merritt, Stephen Wiggins, Ezekiel Barlow, Robert Rankin, Charles Ward, John Robertson, Wm. H. Street, and George D. Robinson, Esquires, Justices of the Peace.

James White, Esq. High Sheriff—Mr. A. Garrison, Deputy Sheriff.

James Peters, Junior, Esquire, Clerk of the Peace, &c.

James T. Hanford, Esquire, Coroner.

John C. Waterbery, Esquire, County Treasurer.

Charles Drury, Esquire, Register of Deeds and Wills.

Henry Swymmer, Esquire, Surrogate.

Honorable William Black, and Benjamin L. Peters, Esquire, Commissioners for taking Bail in the Supreme Court.

Charles J. Peters, Robert Parker, William B. Kinnear, John T. Murray, Neville Parker, James Peters, junior, Henry Swymmer, Francis A. Kinnear, Robert F. Hazen, Le Baron Hazen, William Wright, H. N. H. Lugin, M. H. Perley, Robert L. Hazen, Richard Sands, jr. John Johnston, James William Boyd, and Judah H. Hartt, Esquires, Commissioners for taking Affidavits to be read in the Supreme Court.

Gerhardus C. Carman, John Jordan, and James Moran, Commissioners for Solemnizing Marriage.

## COURTS OF NISI PRIUS.

**TERMS:**—*City and County of Saint John.*—2d Tuesday in January and 3d Tuesday in June.

**KING'S**—4th Tuesday in January.

**SUNBURY**—3d Tuesday in February.

**QUEEN'S**—4th Tuesday in February.

**CHARLOTTE**—1st Tuesday in August.

**KENT**—Last Tuesday in August.

**WESTMORLAND**—1st Tuesday in September.

**NORTHUMBERLAND**—2d Tuesday in September.

**GLOUCESTER**—Monday before the 1st Tuesday in September.

**CARLETON**—1st Tuesday in September. *The last Tuesday in Sept.*



*Terms of the Sittings of the Court of General Sessions and Inferior Court of Common Pleas.*

**SAINT JOHN**—3d Tuesday in March, and 1st Tuesday in June, September, and December.

**YORK**—2d Tuesday in January and June.—Additional Terms of the Common Pleas—3d Tuesday in March, and 2d Tuesday in October.

**WESTMORLAND**—3d Tuesday in June, and 2d Tuesday in December. Additional Terms of the Common Pleas—1st Tuesday in April and September.

**CHARLOTTE**—2d Tuesday in April, and 3d Tuesday in September.—Additional Terms of the Common Pleas—2d Tuesday in July and December.

KING'S  
of the  
QUEEN  
Term  
SUNBURY  
Comm  
NORTH  
Term  
KENT—  
Comm  
GLOUCESTER  
dition  
CARLETON  
the C

ALD  
Benjan  
Daniel  
Thoma  
Gregor  
William  
George

Jo  
Ja  
J.

Joshua  
weather,

Robert  
Bennison,  
Bell, Con

John B  
Hog Ree

James C  
Ezekiel

Nehemiah  
and David

William  
Strange, A

John W  
of Nightly

Thomas  
Thomas

Robert  
Alexand

**KING'S COUNTY**—1st Tuesday in March and July.—Additional Terms of the Common Pleas—1st Tuesday in May and November.  
**QUEEN'S COUNTY**—4th Tuesday in January and June—Additional Terms of the Common Pleas—4th Tuesday in April and October.  
**SUNBURY**—3d Tuesday in January and June—Additional Terms of the Common Pleas—4th Tuesday in March, and 3d Tuesday in October.  
**NORTHUMBERLAND**—1st Tuesday in March and August—Additional Terms of the Common Pleas—1st Tuesday in June and November.  
**KENT**—3d Tuesdays in January and June—Additional Terms of the Common Pleas—1st Tuesday in April and September.  
**GLOUCESTER**—2d Tuesday in January and last Tuesday in July—Additional Terms of the Common Pleas—2d Tuesday in July and Nov.  
**CARLETON**—1st Tuesdays in January and June—Additional Terms of the Common Pleas—1st Tuesdays in March and October.

## CITY OF SAINT JOHN.

John M. Wilmot, Esquire, Mayor.  
 William B. Kinnear, Esquire, Recorder.

ALDERMEN.	ASSISTANTS.	WARDS.
Benjamin Stanton, Daniel Ansley, Thomas Harding, Gregory Van Horne, William Olive, George Bond,	Mr. John Knollin, George A. Lockhart, John Hooper, Ewen Cameron, William Wetmore, Edward Toole,	<i>King's.</i> <i>Queen's.</i> <i>Duke's.</i> <i>Sidney.</i> <i>Guy's.</i> <i>Brook's.</i>

John R. Partelow, Esquire, Treasurer or Chamberlain.

James Peters, junior, Esquire, Common Clerk,  
 J. W. Boyd, Esquire, Deputy do. do.

Joshua Bunting, High Constable.—Edward Bennison, Lewis Fairweather, and John Ketchum, Marshalls.

Robert W. Nowlan, Robert M'Elvy, Lewis Fairweather, Edward Bennison, William Aikins, Alexander Moody, John Bell, and Hugh Bell, Constables.

John Bell, William Aikins, John Sherrard, and Robert W. Nowlan, Hog Reeves on the Eastern side of the Harbour.

James Colwell and Benjamin Sweet, Hog Reeves at Carleton.

Ezekiel Barlow, John Ward, William Leavitt, Thomas Rawleigh, Nehemiah Merritt, Isaac Woodward, George A. Nagel, Lewis Burns, and David Cronk, Port Wardens.

William Jarvis, Benjamin Smith, Ambrose S. Perkins, and Samuel Strange, Assessors of Taxes and of Statute Labour.

John Wishart, Leveret H. Deveber, and Solomon Nichols, Assessors of Nightly Watch Tax.

Thomas Baldwin, Collector of Taxes.

Thomas Coram, Collector of Taxes at Carleton.

Robert James, Inspector of Cord Wood and Bark in the Market Slip.  
 Alexander M'Kenzie, ditto ditto Lower Cove.



Ezekiel Jordan, Collector of Slippage and Wharfage at the Market Slip.—John Walker, ditto Union-street.—S. Gerow, ditto, North Slip. Henry Nice, ditto at Carleton.

Seth Seely and Alexander M'Kenzie, measurers of coals.

Seth Seely, measurer of Grain.

Seth Seely, measurer of Salt.

John M'Garrigle, weigher of Hay, Market Square —Hiram Lawson, ditto, Union and Brussels streets.—Isaac O. Beatteay, do. Guy's Ward. Joseph Coram, ditto Brook's Ward.

Thomas Robson, Collector of Wharfage at the Breakwater.

William Andrews, collector of Wharfage at the Lower Cove.

Thomas Robson, Harbour Master.

Benjamin Chaloner, City Gauger.

Joshua Bunting, Fence Viewer.—James Clarke, ditto at Carleton.

Robert C. Minnette, City Surveyor.

Messrs. John Kerr, Elisha DeW. Ratchford, John V. Thurgar, J. & H. Kinnear, John Robertson, James T. Hanford, Mackay & Moore, William Patten, and William Kerr, Licensed Auctioneers.

John Boyd, M. D., Henry Cook, John Paddock, and Geo. J. Harding, M. D., Esquires, Visiting Physicians.

James Reed, John Wightman, John Leavitt, John Reed, John S. Anthony, Geo. Thomas, John Murray, John Mills, John Woodley, Daniel Hatfield, Alexander Mills, Abraham Beattey, John Leavitt, jun. William Seely, Edward Murray, William Leavitt, James Reed, junior, and John Spears, Branch Pilots.

James Reed, Keeper of the Partridge Island Light House.

George Lane, Keeper of the Beacon Light House.

Robert W. Nowlan, Looker after Nuisances.

Robert W. Nowlan, Pound Keeper.—James Colwell and Jacob Henry, Pound Keepers at Carleton.

Samuel Jordan, Alexander M'Grotty, Benjamin Gale, Samuel Jordan, Thomas Trafton, Robert C. Frost, John G. Tobin, W. O. Cody, George Bond, Jacob Snider, Joseph Fayerweather, John M. Campbell, John Sherrard, Robert L. Harris, and David Whiting, Surveyors of Lumber.

William Barlow, Charles Kay, Archibald White, George Waterbery, John Shiels, James Bowen, John Vallely, and Robert Green, Inspectors of Lathwood, Staves, Hoop Poles, &c.

George Waterbery and William Barlow, Cullers of Dried Fish.

William Dunham, James Bowen, John Dunn, Charles Kay, William Barlow, Cornelius Nice, Jacob Vail, Samuel Strange, Robert Green, Jas. Peacock, Jas. M. Brittain, and Jas. F. Lilly, Inspectors of Pickled Fish.

Fyler Dibles, Superintendent of Carts.

Thomas Sandall, L. H. Deveber, and Thomas Lockey, Overseers of the Poor.

James Nisbet, Keeper of the Alms House.

Robert F. Hazen, Moses H. Perley, and George Bond, Trustees of Schools.

David  
bery, A  
Danie  
low, Th  
Tyng Pe  
John Ro  
James T  
ry Nice,

W  
Ja  
Jo  
Is  
Willia  
Ratchfor  
Committe  
The ab  
Assembly  
pose the

Public

The M  
The R  
The H  
Rober

St. Jo

Pre  
Sup  
Dir

David Waterbery, Chief Engineer of Fire Engines — George Waterbery, Assistant ditto.

Daniel Ansley, John Ward, junior, Thomas Harding, John R. Partelow, Thomas Sandall, Gregory Van Horne, Robert Robertson, William Tyng Peters, A. S. Perkins, George Harding, George D. Robinson, John Robertson, Thos. Barlow, Lauchlan Donaldson, Solomon Nichols, James T. Hanford, George Bond, Tristram Ring, James E. Lilly, Henry Nice, William Leavitt, and Thomas Barlow, Firewardens.

---

### CITY OF SAINT JOHN SAVINGS' BANK.

His Excellency the Lieutenant-Governor, Patron.

Honorable William Black,  
" Ward Chipman, } Vice-Presidents.  
Hugh Johnston, Esquire, }

The Bank of New-Brunswick, Treasurer.  
Daniel Jordan, Esquire, Cashier and Register.

---

### CHAMBER OF COMMERCE.

William Walker, Esquire, Chairman.  
James Kirk, Esquire, } Deputy Chairmen.  
John Robertson, Esq. }  
Isaac Woodward, junior, Esquire, Secretary and Treasurer.

William Leavitt, John V. Thurgar, James T. Hanford, Elisha DeW. Ratchford, and Angus M'Kenzie, Esquires, Ordinary Members of the Committee.

The above Gentlemen, together with the Members of the House of Assembly for the City and County (being the non-elective part) compose the Committee for the ensuing year.

---

### *Public Grammar School in the City of Saint John.*

President—The Reverend the Rector of Saint John.

#### DIRECTORS :

The Mayor, Reverend I. W. D. Gray,  
The Recorder, Neville Parker, Esquire,  
The Honorable Ward Chipman, Reverend Robert Wilson, A. M.  
Robert Parker, Esquire,

Treasurer and Clerk—William Wright, Esquire.

Rector—Mr. James Paterson.

English Assistant—Mr. William Ewing.

---

### *St. John Church of England Sunday School Society.*

Patron—His Excellency the Lieutenant Governor.

President—The Rector of Saint John.

Superintendent and Secretary—The Curate of Saint John.

Directors—The Church Wardens.

*Saint John District Committee of the Society for Promoting  
Christian Knowledge.*

President—Reverend Benjamin G. Gray, D. D.  
Vice-Presidents—Hon. Wm. Black, and William Scovil, Esq.  
Treasurer—Zalmon Wheeler, Esquire,  
Secretary—Reverend I. W. D. Gray.

Terms of admission:—One Guinea donation, and one Guinea annually.  
Recommendation from a Member of the Society.

☞ The depository of Books and Tracts is the Store of Messrs. George  
& Edward Sears, King-street.



**SAINT JOHN SOCIETY LIBRARY.**

William Scovil, Esquire, President.  
James White, Esquire, Vice-President.  
Thomas Millidge, and Geo. D. Robinson, Esquires, Committee.  
Robert F. Hazen, Esquire, Secretary and Treasurer.  
Mr. Anthony R. Truro, Librarian.

☞ Library hours from Twelve to One o'clock, every day.



**SAINT GEORGE'S SOCIETY.**

Robert F. Hazen, Esquire, President.  
John V. Thugar, Esquire, Vice-President.  
Thomas Sandall, Esquire, Treasurer.  
Mr. Anthony R. Truro, Secretary.



**SAINT ANDREW'S SOCIETY.**

John Boyd, Esquire, M. D. President.  
John Robertson, Esquire, Vice President.  
John Wishart, Esquire, Treasurer.  
Mr. Peter Duff, Secretary.



**SAINT PATRICK'S SOCIETY.**

S. G. Hamilton, Esquire, President.  
Mr. James M'Cleery, Vice-President.  
Francis A. Kinnear, Esquire, Treasurer.  
Mr. Samuel Thompson, Secretary.  
Thomas L. Nicholson, Esquire, Assistant ditto.



**ALBION SOCIETY.**

Mr. George Bragg, President.  
Mr. William Scammell, } Vice-Presidents.  
Mr. George Ball, }  
Mr. Anthony R. Truro, Treasurer.  
Mr. Thomas L. Taylor, Secretary.  
Mr. J. Thomas, Assistant Secretary.

Wil  
sioners  
Rob  
of the  
Rob  
sors of  
Hug  
Collec  
John  
house,  
junr. C  
ley, ju  
Eph  
Beau,  
trick

**BRITISH AMERICAN SOCIETY.**

John Ward, Esquire, President.  
Nehemiah Merritt, } Esquires, Vice-Presidents.  
Stephen Humbert, }  
Daniel Leavitt, Esquire, Treasurer.  
Mr. Lewis W. Durant, Secretary.

**FRIENDLY SONS OF ERIN SOCIETY.**

William Mullin, Esquire, President.  
Mr. Joseph M'Pherson, Vice-President.  
Mr. Bernard Reynolds, Treasurer.  
Mr. John Dunne, Secretary.

**TEMPERANCE SOCIETY.**

President—Reverend Benjamin G. Gray, D. D.  
Vice-President—William B. Kinnear, Esquire.  
Secretary—Angus M'Kenzie, Esquire.

**FRIENDLY FIRE CLUB.**

Robert W. Crookshank, Esquire, President.  
James Hendricks, Esquire, Vice-President.  
Thomas L. Nicholson, Esq. Secretary and Treasurer.

**UNION FIRE CLUB.**

Daniel Leavitt, Esquire, President.  
L. H. Deveber, Esquire, Vice-President.  
John V. Thurgar, Esquire, Treasurer.  
Mr. Ezekiel Jordan, Secretary.

---

---

**PARISH OF PORTLAND.**

William G. Cody, George Matthew, and James Gallagher, Commissioners of Highways.

Robert Rankin, John C. Waterbery, and James Travis, Overseers of the Poor.

Robert Rankin, Robert Payne, Esquires, and James Travis, Assessors of Taxes.

Hugh Starkey, John Wallace, Charles Quigley, and John Johnston, Collectors of Taxes.

John Moore, James Stephenson, junr. Robert Bowes, John Stackhouse, John Robinson, George Buckley, John Ogden, Thos. Fearerby, junr. Charles Cowen, Nathan S. Monks, John Dalton, Charles Quigley, junr. James Burley, and James Stephenson, Constables.

Ephraim Sentill, Thomas M'Faddin, William Patterson, Thomas Bean, William Robertson, Thomas Garnett, William Bean, senior, Patrick Harrigan, Winthrop Robinson, Thomas Long, James S. Smith,

Morris Whooton, Henry Graham, John Morrison, Wm. Daley, Griffith Morrison, and James Sweeney, Fence Viewers.

James Burley, Michael Campbell, Edward Hughes, John Robinson, James Stevenson, Patrick Harrigan, Robert Bowes, Hugh Dunn, and William Scott, Pound Keepers.

John Jordan, William W. Jordan, Francis Jordan, Samuel Reynolds, Jeremiah Gove, John W. Scott, Henry S. Payne, Thomas M'Mackin, Gilbert Jordan, junr. Thomas Gillespie, Hugh Sharkey, John Cunard, Robert Cunard, Joseph Quigley, John Reynolds, Surveyors of Lumber.

John Moore, John Robinson, James Stevenson, James Burley, James Stevenson, jun. Edward Hughes, John Stackhouse, Robert Bowes, Matthew S. Manks, John Broughfield, Edward Davis, and William Moyes, Hog Reeves.

John Jordan, and Robert Payne, Esquires, and James Inches, Trustees of Schools.

Hugh Sharkey, Town Clerk, and Clerk of the Market.



## PARISH OF LANCASTER.

James Olive, George Vaughan, and Calvin L. Hatheway, Commissioners of Highways.

Isaac Clarke, James Olive, and John Gillies, Overseers of the Poor.

William Tilton, Isaac Clarke, and James Olive, Assessors of Taxes.

John Harding, Collector of Taxes.

Isaac Clarke, John Gillies, and Calvin L. Hatheway, Trustees of Schools.

John Dunham, John Hargrove, and John Kelly, Constables.

Wm. Tilton, George Vaughan, and Charles Lord, Fence Viewers.

John Dunham, Hog Reeve.

William Tilton, and John Harding, Pound Keepers.

William Wilson, Town Clerk, and Clerk of the Market.



## PARISH OF SAINT MARTINS.

Stephen Mosher, Isaac Bradshaw, and James M'Lean, Commissioners of Highways.

Joseph Brown, Simon Vaughan, and Thomas Stevens, Overseers of the Poor.

Joseph Brown, Thomas Black, and Thomas Stephens, Trustees of Schools.

Stephen Mosher, Isaac Bradshaw, and James M'Lean, Assessors of Taxes.

Daniel Brown, Collector of Taxes.

George Marrs, Surveyor of Lumber.

Daniel Brown, senior, and William Sharp, Constables.

Philip Black, and Daniel Brown, Fence Viewers.

Daniel Vaughan, Pound Keeper.

George Marsters, Town Clerk and Clerk of the Market.

SER

Major-

Fr

Sai

Sai

William

George S

Oliver G

F

J.

Capt

OFFIC

---

---

## STAFF OF THE ARMY,

SERVING IN THE PROVINCE OF NEW-BRUNSWICK,  
UNDER THE COMMAND OF  
Major-General Sir ARCHIBALD CAMPBELL, Bart., G. C. B.

Captain J. Campbell, (38th Regiment,) Aid-de-Camp.  
Town Major Gallagher, H. P. 98th Regiment.

### GARRISONS.

Fredericton—Major Greaves, (34th Regt.) Commandant. *lt Col. Fair*  
Saint John—Lieutenant-Colonel Turner, K. B. ditto.  
Saint Andrews—Lieutenant Lax, 34th Regiment, ditto.

### CHAPLAINS.

Fredericton—Venerable Archdeacon Coster, M. A.  
Saint John—Reverend Benjamin G. Gray, D. D.  
Saint Andrews—Reverend Jerome Alley, D. D.

---

### COMMISSARIAT DEPARTMENT.

William Pobinson, Esquire, Assistant Commissary General.  
George Swinney, Esquire, Deputy Assistant Commissary General.  
Oliver Goldsmith, Esquire, Deputy Assistant Commissary General.

---

### ORDNANCE DEPARTMENT.

F. C. Frith, Esquire, Deputy Ordnance Store Keeper.  
Lieutenant S. Huyghue, 1st Clerk.  
Mr. Robert Pickthall, 2d Clerk.  
Mr. William Bond, Store House Man.

J. E. Woolford, Esquire, Barrack Master, Fredericton.

---

### ROYAL ENGINEER DEPARTMENT.

Captain Marshall, Commanding; Lieutenant St. John Lyster.  
Mr. Lionel Anderson, Clerk,  
Mr. Henry Hennigar, *Overseer of Works.*

---

### BOARD OF RESPECTIVE OFFICERS.

Captain Marshall, Royal Engineers.  
Captain Stanway, Royal Artillery.  
Deputy Store-Keeper Frith.

---

### OFFICERS OF CORPS SERVING IN THE PROVINCE.

#### ROYAL ARTILLERY.

Captain Stanway, Commanding.  
Lieutenant B. O. Lyster.



34TH REGIMENT.

Major R. Greaves, Commanding: Lieutenant A. Horne,  
 Major M. Tew, " J. W. Howe, (Adjt.)  
 Captain E. Connelly, Lt. Ensign Hammond,  
 Captain R. Ruxton, " Markham.  
 Captain J. Hooke, Surgeon—R. Rank...  
 Lieutenant John Elgee, Assistant Surgeon—J. Hendrick.  
 " N. R. Brown, Paymaster—G. Ledingham.  
 " W. Lax, Quarter-Master—W. Pepperall.  
 " E. Broderick, Capt.

**THE NAVY.**

Vice-Admiral Sir GEORGE COCKBURNE, G. C. B., Commander-in-Chief, on the West India, Halifax, and Newfoundland Stations.

Thomas Woodman, Esquire, Secretary.—Henry George Hamilton, Esquire, Flag Lieutenant.

**VERNON, 50 Guns.**—Captain, Sir G. A. Westphal, Knight; Commander, M. H. Sweny; Supernumerary Commander, H. W. Bayfield; Lieutenants, W. A. Willis, H. L. Maw, J. S. Foreman, Hon. W. B. Devereux, H. G. Hamilton, Flag Lieutenant; Captain Marines, J. R. Coyrton; 2d Lieutenant, S. Fraser; Master, J. R. Mynne; Chaplain, J. Baker; Surgeon, A. Nisbet, M. D.; Purser, G. V. Oughton; Assistant Surgeons, C. H. Fuller, and A. Tucker.

**BLANCHE, 46 Guns.**—Commodore A. Farquhar, C. B. and K. H.; Commander, W. Burnett; Lieutenants, H. Stroud, S. H. Usher; 2d Lieutenant Marines, A. S. J. Walsh; Master, W. C. Middlemist; Purser, R. M. Mead; Chaplain, T. Royle; Surgeon, J. Armstrong; Assistant Surgeon, J. Anderson.

**PALLAS, 42 Guns.**—Captain William Walpole; Lieutenants, J. W. Noble, W. C. Nowell, George S. V. King; Lieutenants Marines, J. Collins, E. Hooker; Master, E. Rose; Purser, J. Porter; Chaplain, J. H. Malet; Surgeon, J. Hatchy; Assistant Surgeon, T. H. Nation.

**ARIADNE, 28 Guns.**—Captain, C. Phillips; Lieutenants, A. Livie, J. H. Murray, J. Russell; Lieutenant Marines, F. S. Hamilton; Master, J. R. Tittoch; Purser, C. H. Osmer; Surgeon, E. Hilditch; Assistant Surgeon, — —.

**SAPPHIRE, 23 Guns.**—Captain, Honorable G. R. W. Trefusis; Lieutenant, D. C. Camby; Lieutenant of Marines, P. T. M. Payne; Master, J. Tonkin; Purser, W. Crayne; Surgeon, H. Goldney; Assistant Surgeon, W. Bayne.

**TWEED, 20 Guns.**—Commander, A. Bertram; Lieutenants, C. H. M. Buckle, F. W. Austen; Master, J. B. Tucker; Purser, T. Mc Knight; Surgeon, A. Bothwell; Assistant Surgeon, W. Orr.

**COLUMBINE, 18 Guns.**—Commander, H. O. Love; Lieutenants, R. H. Metherell, R. E. Bullero; Master, J. Pyke; Purser, J. Tindall; Surgeon, A. Smith.

**GANNETT, 18 Guns.**—Commander, J. B. Maxwell; Lieutenants, H. Wright S. Carpenter; Master, John Halfcrow; Purser, J. Tayer; Surgeon, R. Holden; Assistant Surgeon, J. Andrews.

**RACEHORSE, 18 Guns.**—Commander, Francis V. Cotton; Lieutenants, T. Hope, G. M. Hunter; Master, J. Cooper; Purser, J. Halse; Surgeon, J. B. Hatton; Assistant Surgeon, A. Sanderson.

AR  
 J. B.  
 Warw  
 FL  
 Master  
 T. W.  
 VIC  
 Brown  
 Assista  
 PE  
 Beaufo  
 A. Lan  
 CO  
 T. P.  
 Lymere  
 LA  
 H. Bin  
 geon, F  
 DE  
 F. Sm  
 geon, V  
 ALL  
 assistant  
 AN  
 COR  
 MA  
 Comma  
 R. H. B  
 FIR  
 assistant  
 JAC  
 der, E.  
 KAN  
 tant Sur  
 MIN  
 Surgeon  
 NIM  
 tant Sur  
 PIC  
 Surgeon  
 PIN  
 assistant  
 SKI  
 Assista  
 SPE  
 rington;  
 RH  
 Evans;  
 den; Su  
 Bell.  
 THU  
 Lieutena  
 Surgeon  
 WA  
 MON



**ARACHNE, 18 Guns.**—Commander, W. G. Agar; Lieutenants, J. B. Woodthorpe, A. J. Bulman; Master, H. Napleton; Purser, J. Warwick; Surgeon, W. Martin; Assistant Surgeon, A. Coats.

**FLY, 18 Guns.**—Commander, P. M'Quhae; Lieut. J. L. Stoll; Master, J. Rogers; Surgeon, C. M'Arthur, M. D.; Assistant Surgeon, T. W. Jewell; Purser, J. Lyall.

**VICTOR, 18 Guns.**—Commander, R. Russell; Lieutenant, C. F. Brown; Master, H. J. Strute; Purser, H. South; Surgeon, J. West; Assistant Surgeon, S. Brown.

**PEARL, 20 Guns.**—Commander, R. Gordon; Lieutenants, G. Beaufoy, T. Smith; Master, W. Jeffreys; Purser, F. Lean; Surgeon, A. Lane; Assistant Surgeon, G. A. Monrol.

**COMUS, 18 Guns.**—Commander, W. P. Hamilton; Lieutenants, T. P. Dobree, C. J. F. Campbell; Master, T. N. King; Surgeon, G. Lymers; Purser, A. N. Earle; Assistant Surgeon, W. M'Gill.

**LARNE, 18 Guns.**—Commander, W. S. Smith; Lieutenants, H. H. Bingham, Right Hon. Lord F. J. Russell; Master, J. Hales; Surgeon, R. M'Comick; Assist. Surgeon, W. Munro; Purser, J. Breaks.

**DESPATCH, 16 Guns.**—Commander, G. Daniell; Lieutenants, F. Smyth, Hon. G. H. St. Vincent, D. Kinnaird; Master, —; Surgeon, W. Aitchison; Assistant, J. Crichton; Purser, J. E. Key.

**ALBAN, Steam Ship.**—Lieutenant-Commander A. Kennedy; Assistant Surgeon, W. Glasgow.

**ANTELOPE, Bermuda.**

**COROMANDEL, Convict Ship, Bermuda.**

**MAGNIFICENT, Convalescent ship, Jamaica, 4 Guns.**—Lieut. Commander, J. Paget; Master, R. Currie; Purser, J. Bryan; Surgeon, R. H. Brown; Assistant Surgeon, W. Houlston.

**FIREFLY, 5 Guns.**—Lieutenant Commander, J. J. M'Donnell; Assistant Surgeon, J. M'Rae.

**JACKDAW, Surveying vessel, 4 Guns.**—Lieutenant-Commander, E. Barnett; Assistant Surgeon, G. Burn.

**KANGAROO, 3 Guns.**—Lieutenant Commander, F. Gilly; Assistant Surgeon, W. Pennycook.

**MINX, 3 Guns.**—Lieutenant Commander, G. G. Micle; Assistant Surgeon, J. Jackson.

**NIMBLE, 5 Guns.**—Lieutenant Commander, C. Boulton; Assistant Surgeon, L. Clarke.

**PICKLE, 5 Guns.**—Lieutenant Commander, C. Bagot; Assistant Surgeon, D. Grant.

**PINCHER, 5 Guns.**—Lieutenant Commander, W. Croke; Assistant Surgeon, J. M'Ibroy, M. D.

**SKIP JACK, 5 Guns.**—Lieutenant Commander, W. Shortland; Assistant Surgeon, T. E. Ring.

**SPEEDWELL, 5 Guns.**—Lieutenant Commander, C. H. Norrington; Assistant Surgeon, R. W. Campbell.

**RHADAMANTHUS, 4 Guns, Steam Ship.**—Commander, G. Evans; Lieutenants, W. S. Blornt, T. G. Gordon; Master, H. Hodden; Surgeon, C. France; Assistant Surgeon, A. Stewart; Purser, J. Bell.

**THUNDER, 6 Guns, Surveying vessel.**—Commander, B. Owen; Lieutenants, B. Allen, J. Cannon, T. Smith; Master, E. Dunsterville; Surgeon, T. Johnston; Purser, J. Harris.

**WAT. YOUTH, 16 Guns, Receiving Hulk, Bermuda.**

**MONKEY, Tender to Flag Ship.**

# STAFF OF THE MILITIA, IN THE PROVINCE OF NEW-BRUNSWICK.

His Excellency Major-General Sir A. Campbell, Bart. G.C.B. Commander-in-Chief.

Lieutenant Colonel C. B. Turner, K. H. } Inspecting Field Officers.  
Lieutenant Colonel John Allen, }  
The Honorable Lieutenant-Colonel George Shore, Adjutant General.  
Major John Gallagher, Quarter Master General.  
Lieutenant Colonel Charles Drury, Provincial Aid-de-Camp.  
The Honorable Major G. F. Street, do. do.

## YORK COUNTY MILITIA.

### First Battalion.

#### Lieutenant Colonel.

G. Minchin, 1st Jan. 1832

#### Major.

x/1832. M. Brannen, 1st Jan. '32  
G.P. Bliss, (art.) 17 Sep. '33

#### Captains.

G.K. Lugin, af. 14 Jun. '24  
D. L. Robinson, 24 Nov. '28  
W.M. Beath, (r) 30 Aug. '30  
P. Fisher, 14th Sept. do  
J. F. Taylor, 15th do do  
G. E. Ketchum, 22 Aug. '31  
L. A. Wilnot, 23 do do  
G. F. S. Berton, 12 Mar. '32  
Jas. Holbrook, 20 do do  
A. K. S. Wetmore, (art.) 2d  
capt. 17 S-pt. '33  
J. A. Beckwith, 17 do do

#### Lieutenants.

*removed*  
*do -*  
*Capt. from*  
*1835.*  
*l. Station*  
*and*  
A. Dibble, (Art.) 9 Jan. '26  
N. Walker, (Af.) 28 No. '28  
T. Gardiner, (Af.) 29 do do  
G. F. H. Minchin, 24 Sep. '29  
B. Wolhaupter, (r) 30 Aug. '30  
F. E. Beckwith, (r.) 31 do do  
W. N. Akerley, (r.) 1 Sep do  
D. H. Smith, 14 do do  
W. Grosvenor, 15 do do  
C. Murray, 16 do do  
N. M. Hazen, 18 do do  
Asa Coy, 20 do do  
R. Fulton, 12 March, '32  
J. Gregory, 13 do do  
W. S. Estey, 17 Sept. '33

#### Ensigns.

C. W. Marsh, (Af.) 25 Nov. '28  
W. D. Hartt, 20 Sept. '30  
W. Needham, 22 Aug. '31  
S. Barker, 24 do do  
Geo. Woods, 25 do do  
T. S. Wetmore, 12 Mar. '32  
W. Segee, jun. 13 do do  
John Simpson, 17 Sep. '33  
Michael Fisher, 18 do do  
A. S. Carman, 19 do do

### Paymaster.

J. Taylor, (capt) 14 June, '24

### Adjutant.

A. C. Starritt, lt. 14 Mar. '32

### Quartermaster.

T. Emerson, 20 July, '19

### Surgeon.

T. Emerson, 20 July, '19

### Second Battalion.

#### Lieutenant Colonel.

Rich. Ketchum, 1 Jan. '52

#### Major.

John Dibblee, 8th May, '32

#### Captains.

T. G. Cunliffe, 8 April, '19  
A. B. Walsh, 25 June, '21  
J. S. Browne, 14 June, '24  
W. Dibblee, 4 April, '25  
J. Ketchum, 5 do do  
T. Phillips, 9 June, '23  
A. Nicholson, 29 July, '28  
B. Tibbits, 30 do do  
J. Dickenson, 30 Aug. '30  
E. Turner, 31 do do  
B. P. Griffith, 8 May, '32  
Rufus Payson, 9 do do  
John Kearney, 10 do do  
C. M. Laughlin, 11 do do  
E. A. Cunliffe, 12 do do  
H. E. Dibblee, 13 do do

#### Lieutenants.

James Dingee, 9 April, '25  
Elijah Sisson, 30 July, do  
N. Stickney, 25 Aug. '29  
P. Dickenson, 30 do do  
M. Giberson, 31 do do  
G. Milbury, 1 Sept. do  
W. N. Mallory, 25 Oct. do  
W. M. Donald, 8 May, '32  
A. B. Sharpe, 9 do do  
W. M. Kenzie, 10 do do  
Chas. Upham, 11 do do  
R. Ketchum, 12 do do  
Jos. Phillips, 13 do do  
Robt. Hannah, 24 Sept. do

### Ensigns.

J. Nicholson, 29 July, '28  
G. Murphy, 30 do do  
J. Brown, Jr. 30 Aug. '29  
T. Burlock, 31 do do  
J. Giberson, 1 Sept. do  
Jas. Lloyd, 2 do do  
W. Shaw, 25 Oct. do  
R. Beardsley, 8 May, '32  
Micheau Bedell, 9 do do  
Isaac Carvel, 10 do do  
C. Wolhaupter, 11 do do  
E. Estabrooks, 12 do do  
James Bishop, 13 do do  
Thos. Upham, 24 Sep. do  
Ben. Churchill, 25 do do  
Geo. M'Kenzie, 26 do do

### Adjutant.

C. Raymond, cap. 23 Jy. '28

### Quartermaster.

C. Peabody, lt. 23 Sep. '28

### Surgeon.

George E. Baldwin, in Fed.

### Third Battalion.

#### Lieutenant Colonel.

J. Allen, (staff,) 21 May, '24

#### Major.

#### Captains.

W. Davidson, 9 March, '16  
A. Verza, 19 Jan. 1818  
V. Harding, 19 Aug. 1822  
F. Morehouse, 15 June, '24  
Geo. Long, 2 Feb. '29  
W. C. Joslin, 3 do do  
Jas. Hartley, 4 do do  
John Grant, 5 do do  
T. Jones, (af.) 5 do do  
J. Haggerman, 5 do do  
Jas. Miles, 2 April, '22  
Jno. Barker, 20 Sept. '30  
Wm. Kitchen, 24 Sep. '32  
S. Lockwood, 125 do do

#### Lieutenants.

Enoch Dow, 5 Feb. '29

J. Har  
W. D  
Jno. Y  
Jas. J  
C. Mo  
A. Ha  
A. Ha  
D. Pa  
Jas. T  
A. Mo  
D. Phi  
J. Cam  
Benj.  
George

D. Yer  
Jas. G  
D. Jew  
Jas. Cl  
Wm. J  
J. Chris  
T. Pare  
J. Ingr  
E. Gar  
S. Cron  
D. Dow  
P. Wats  
R. Bark  
B. Whe  
R. Kilb  
T. Saun  
Jno. Bre  
Henry J  
Janus N

J. Allan  
A. Lawren  
W. Cave  
Qu  
D. Paren

Fire  
Lieute  
C. Drury  
B. L. Peter  
C  
G. D. Robi  
T. Leavit  
T. Barlow  
T. Nisbet  
M. Henni  
E. L. Jar  
C. Drury  
T. M'Mac  
N. Diabro  
H. N. H. L  
W. Hutch

ICK.

a-Chief.

July, '28  
do do  
Aug. '29  
do do  
Sept. do  
do do  
Oct. do  
May, '32  
9 do do  
0 do do  
1 do do  
2 do do  
3 do do  
4 Sep. do  
25 do do  
26 do do  
nt.  
23 Jy. '28  
ster.  
3 Sep. '26  
n.  
win. in Ind.  
alion.

Colonel.  
21 May, '24

March, '16  
Jan. 1818  
Aug. 1822  
5 June, '24  
2 Feb. '29  
3 do do  
4 do do  
5 do do  
3 do do  
5 do do  
2 April, '22  
0 Sept. '30  
24 Sep. '32  
25 do do  
ants.  
5 Feb. '29

J. Hammond, 6 do do  
W. Davidson, 7 do do  
Jno. Yerxa, 3 July, '29  
Jas. Jones, 4 do do  
C. Morehouse, 7 July, '29  
A. Hartt, 8 do do  
A. Hammond, 9 do do  
D. Parent, 10 do do  
Jas. Tibbetts, 11 do do  
A. Moody, 12 do do  
D. Phillips, 13 do do  
J. Campbell, 20 Sept. '30  
Benj. Burt, 21 do do  
George Fox, 24 Sept. '32

**Ensigns.**

D. Yerxa, Jr. 2 July, '29  
Jas. Golder, 3 do do  
D. Jewett, 4 do do  
Jas. Cliff, 5 do do  
Wm. Jones, 6 do do  
J. Christy, 7 do do  
T. Parent, 8 do do  
J. Ingraham, jr. 9 do do  
E. Garden, 10 do do  
S. Cronkhite, 11 do do  
D. Dow, 13 do do  
P. Watson, 14 do do  
R. Barker, 18 Sept. '30  
B. Wheeler, 19 do do  
R. Kilburn, 20 do do  
T. Saunders, 21 do do  
Jno. Brewer, 22 do do  
Henry Jones, 24 Sept. '32  
Janus Nelson, 25 do do

**Paymaster.**

J. Allan, capt. 2 July '29

**Adjutant.**

I. Lawrence, cap. 20 Sept. '30

**Surgeon.**

W. Caverhill, 16 Apr. '22

**Quartermaster.**

D. Parent, (ens.) 3 July, '38

**Fourth Battalion.**

**Lieutenant Colonel.**

P. Fraser, 7th Sept. 1830

**Major.**

**Captains.**

P. Lizotte, 1st Dec. 1824  
A. Bellefleur, 2 do do  
F. Thihodeau, 3 do do  
F. Violette, 4 Dec. 1824  
S. Hebert, 4 July, '27  
L.R. Coombes 14 June, '24  
F. Rice, adjt. 7 Sept. '30  
G. Cere, 8 do do  
R. Michaud, 9 do do

**Lieutenants.**

Xavier Cere, 2 Dec. '24  
L. Bellefleur, 4 do do  
J. B. Martin, 5 do do  
Jos. Cere, 7 Sept. '30  
Jos. Hebert, 8 do do  
J. B. Daigle, 9 do do  
B. Lizotte, 10 do do  
T. Nugent, 11 do do  
S. Hebert, jr. 12 do do  
M. Farrell, 13 do do  
A M'Crear, 14 do do

**Ensigns.**

D. Violette, 5 Dec. '24  
R. Violette, 7 Sept. '30  
F. M'Donnell, 8 do do  
M. Mercure, 9 do do  
J. Burgoine, 10 do do  
R. Martin, 11 do do  
P. Mercure, 11 do do  
T. Martin, 13 do do  
D. Cere, 14 Sept. '24

**Adjutant.**

F. Rice, capt. 1 Dec. '24

**Quartermaster.**

J. B. Souci, 1st Dec. '24

**Fifth Battalion.**

**Lieutenant Colonel.**

John Robinson, 1 Jan. 1832

**Major.**

Wm. Currie, 10 July, do

**Captains.**

Allan M'Lean, 20 July, '19  
R. Currie, 12 Dec. '28  
D. Hallett, 13 do do  
G. Clements, 14 do do  
L. Campbell, 15 do do  
J. M'Gibbon, 12 June, '30

**Lieutenants.**

P. Campbell, 13 Dec. '22  
H. Henley, 14 do do  
D. J. Estey, 15 do do  
G. Sterling, 17 do do  
A. M'Lean, 12 June, '30  
A. M'Gibbon, 10 July, '32

**Ensigns.**

W. Sterling, 14 Dec. '28  
C. Nevers, 15 do do  
D. Manson, 16 do do  
Alex. Ross, 12 June, '30  
Jacob Brown, 10 July, '32  
G. R. Estey, 11 do do

**Adjutant.**

**Quartermaster.**

M. Pickard, lt. 15 Dec. '28

**York County Cavalry**  
(Attached to 1st Batt.)

**Captain.**

W. Woodford, 22 Nov. '28

**Lieutenants.**

G. J. Dibblee 24 Nov. '28  
W. H. Odell, 5 June, '32

**Cornet.**

Steph. Miller, 5 June, '32

**Quartermaster.**

I. W. Jouett, cor. 15 De. '28

**SAINT JOHN CITY MILITIA**

**First Battalion.**

**Lieutenant Colonel.**

C. Drury, stf. 25 Oct. 1824

**Major.**

B. L. Peters, lt. col. 5 Oc. '30

**Captains.**

G. D. Robinson, aj. 19 Ap. '22  
T. Leavitt, af. 22 Aug. '25  
T. Barlow, af. 9 Jan. '27  
T. Nisbet, 3 July, do  
M. Hennigar, 30 Aug. '30  
E. L. Jarvis, 30 Jan. '33  
C. Drury, 31 do do  
T. M' Mackin, 1 Feb. do  
N. Diabrow, 2 do do  
H. N. H. Lugin, 30 May do  
W. Hutchinson, 31 do do

**First Lieutenants.**

W. O. Smith, rif. 30 Jan. '33  
John Robertson, 31 do do  
Peter Duff, 2 Feb. do  
W. D. W. Hubbard, 3 do do  
Geo. Hutchinson, 4 do do  
C. H. Grocock, 5 do do  
G. Waterbery, ar. 13 Ap. do  
B. Ansley, (af.) 29 May do  
Douglas Clarke, 30 do do  
James Gregg, 31 do do  
W. H. Scovill, 1 June do

**Second Lieutenants.**

J. W. M'Leod, ri. 16 June '28  
Alex. Robertson, 3 Ap. '33  
Wm. Haggerty, 4 do do  
Thos. Nisbet, jr. 5 do do

R. Robertson, 14 do do  
C. J. Melick, 15 do do  
E. Ketchum, 29 May do  
John Sandall, 30 do do  
E. L. Thorne, 2 Sep. do  
Simon W. Cock, 3 do do  
Thos. S. Estey, 4 do do

**Paymaster.**

J. Kirk, capt. 22 Aug. '25

**Adjutant.**

G. D. Robinson, c. 26 Mr. '27

**Quartermaster.**

E. J. Budd, 29 May, '33

**Surgeon.**

J. Boyd, M. D. 16 Sep. '23

**Enrolling Officer.**

T. Baldwin, cap. 21 Jul. '32

Second Battalion.

Lieutenant-Colonel.

Chas. Ward, 1 Jan. 1832  
Major.

Captains.

G. Vanhorne, 5 Sept. '21  
T. Merritt, 1 July, '22  
S. Smith, 25 Aug. '23  
J.T. Hanford, 5 Dec. '24  
J.V. Thurgar, rf. 23 Sep. '26  
A. Crookshank, 15 Mar. '30  
W. Mullin, 5 Nov. '33  
N. J. Brown, 6 do do

C. W. Tisdale, 7 Nov. '33  
John Wishart, 8 do do  
Lieutenants.

J. Hooper, rif. 18 Mar. '29  
Wm. Ilughson, 5 Nov. '33  
E.W. Greenwood, 6 do do  
J. Wetmore, 7 do do  
Robert Summers, 8 do do  
Charles Johnston, 9 do do  
B. P. Wallop, 10 do do  
George Merritt, 11 do do  
John L. Wilmot, 12 do do  
John C. Ward, 13 do do  
Ensigns.

Chas. Gallagher, 5 Nov '33

Thos. Wallace, 6 Nov. '33  
T. B. Wilson, 7 do do  
David McMillan, 8 do do  
James Nethery, 9 do do  
James Otty, 10 do do  
T. A. Sancton, 11 do do  
S. K. Foster, 12 do do

Paymaster.

L.L. Bedell, cap 20 Sep. '27

Adjutant.

W.H. Street, cap. 26 Se. '32

Quartermaster.

H. Chubb, cap. 11 Sep. '21

Surgeon.

H. Cook, 20th Aug. '27

SAINT JOHN COUNTY REGIMENT.

Lieutenant Colonel Charles Simonds, Commanding.

First Battalion.

Majors.

G. Anderson, lt. c. 27 Ap. '25  
A. Wedderburn, 1 Jun. '26

Captains.

G.C. Carman, 21 June, 24  
A. Menzies, 3 Aug. do  
S. Dalton, 5 Apr. '25  
R. Payne, 17 May, do  
Wm. Craft, 11 June, do  
Jno. Cunnard, 17 Sep. '27  
Jas. Ketchum, 23 July, '28  
D. Ansley, 25 Oct. do  
I. Flewelling, 25 do do  
T.L. Nicholson, 31 Aug '30  
I. Merritt, 8 Oct. '33

Lieutenants.

G. Clark, 11 June, '27  
Jas. Payne, 13 do do  
D.L. Dykeman, 23 July, '28  
Chs. Theal, 29 July, '28  
J. Ketchum, 30 do do  
R. Carman, 26 Oct. '28  
I. Stevens, 27 do do  
R. Jenkins, af. 5 July, '30  
Jas. Bartlett, 30 Aug. do  
W.H. Travis, 25 Oct. do  
T. Cunnard, 15 April, '33  
John Pollok, (art.—1st lt.)  
8 Oct. '53  
Charters Simonds., (art. 2d  
lieut.) 9 Oct. '33

Wm. Ross, (art.—2d lieut.)  
10 Oct. '33  
Wm. Craft, (r. 1st lt) 11 do  
Wm. Parks, (r. 2d lt) 12 do  
J. Quinton, (r. 2d lt) 13 do  
F. Jordan, 14 do  
Robert Cunnard, 15 do  
Ensigns.

G. Vaughan, 25 Oct. '28  
J. Beatley, af. 5 July, '30  
F. Hatheway, 30 Aug. '30  
H. Quinton, 31 do do  
J. Lingley, 15 April, '33  
John Ansley, 8 Oct. do  
— Flewelling, 9 do do  
W. Wetmore, 10 do do  
Adjutant.

C.L. Hatheway, cp. 7 S. '21  
Paymaster.

G. Mathew, cap. 30 Au. '30  
Surgeon.

S.G. Hamilton, 30 Aug. '30  
Quartermaster.  
Wm. Scammell, (cap.) 13  
April, '33

Second Battalion.

Major.

Jas. Moran, 12 June, 1830

Captains.

W. G. Cody, 23 Aug. '21  
Jehiel Partelow, 1 Sep. do

John Jordan, 3 June. '22  
D. Vaughan, 22 do '24  
J. Cunningham, 25 Oct. 30  
Jno. Fownes, 16 Aug. '31  
W. McCannon, 17 do do

Lieutenants.

Thos. Bean, 31 Aug. '21  
E. Sentill, 3 June, '22  
A. Bradshaw, 1 July, do  
A. S. Hodge, 25 Oct. '28  
W. Q. Cody, 25 Oct. do  
Wm. Veal, 15 Aug '31  
Steph. Mosier, 16 do do  
Thos. Fownes, 17 do do  
James Stewart, 18 do do  
Samuel Abbott, 19 do do

Ensigns.

H. Anthony, 22 Sept. '21  
Jas. Swin, 20 July, '24  
O.M. Woodton, 8 Apr. '25  
W.R. Sentill, 25 Oct. '30  
Geo Masters, 15 Aug. '31  
Philip Mosier, 16 do do

Adjutant.

T.H. Black, cap 15 Aug '31  
Paymaster.

J.R. Partelow, c. 24 No. '26  
Quartermaster.

T. Stevens, 30 Aug. '30  
Surgeon.

G. J. Harding, 1 Jan. '32

SAINT JOHN SEA FENCIBLES.

Lieutenant-Colonel A. Otty, Commandant.—(26th February, 1833.)

Captains.

Wm. Eagles, 10 May, '24  
Saml. Strange, 29 Mar. '25  
James Reed, 23 Sept. '26

Thomas Reed, 2 Aug. '30  
B. Stanton, 20 Mar. '33  
G. A. Nagel, 22 do do

Lieutenants.

J. Ponsford, 29 Mar. '25  
W. Drake, do do  
J. Stackhouse, do do

W. I.  
G. E.  
A. S.  
S. G.  
John  
N. V.

Lieut.  
T. O.

Jas. F.  
G. Hay  
John I.  
F.A.D.  
E. A. M.  
Jno. Tr.  
Jer. T.  
W. S.

Hugh M.  
Lieut.  
C. Camp

Wm. Ga

Jas. Boy  
T. Conni  
Geo. Wa  
W. Whit  
G. M'Ma  
John Roc  
John Stu

J. Moore  
T. Berry  
Jno. Gra  
Jos. Wal  
J. Aymar  
J. Berry,  
Second  
G.F. Cam  
R. Wilson  
R. Watson  
D. Townse  
S.H. Wh  
D. Thomp  
G. M'Cul  
J. Campb  
S. Getty,

C. Bartlet  
E. Wilson  
T. Conni  
R. Hutchi  
J. Conni  
J. M'Kird

W. P. Scott, 23 Sept. '26	W. Lawton, 24 do do	<i>Adjutant.</i>
G. Eagles, 19 do '27	Geo. Lovett, 25 do do	T. M. Smith, (cap.) 23d do
A. S. Perkins, 20 Mar. '33	W. Jordan, 26 do do	<i>Quartermaster.</i>
S. Garrison, 21 do do	T. Ruddick, 27 do do	Wm. Leavitt, (cap.) 22 do
John Reed, 22 do do	<i>Paymaster.</i>	<i>Surgeon.</i>
N. Vail, 23 do do	W. Vaughan, (capt.) 19 do	J. Paddock, 20 do

### SUNBURY COUNTY MILITIA.

<i>Lieutenant Colonel.</i>		<i>Lieutenants.</i>		W. Easterbrooks, 12 do do	
T. O. Miles, 25 Oct. 1828		Geo. Nevers, 3 Aug. '24		G. B. Taylor, 25 Oct. '28	
<i>Major.</i>		N. Hubbard, 11 Sep. 1827		J. Tilley, jr. 26 do do	
<i>Captains.</i>		G. H. N. Harding, 12 do do		W. Kimball, 24 Aug. 1829	
Jas. Filley, 25 Apr. '20		H. Loder, 25 Oct. '28		Jno. Bailey, 25 do do	
G. Hayward, 3 Aug. '24		G. Miles, 26 do do		H. Boone, 26 do do	
John Dow, 3 do do		C. Hazen, 24 Aug. '29		B. Barker, 30 Aug. '30	
F. A. DeVeber, 11 Sept. '27		L. Seely, 25 do do		<i>Adjutant.</i>	
E. A. Miles, 26 Oct. '28		T. Nason, jr. 26 do do		J. Hazen, cap. 25 Aug. '23	
Jno. Trown, 24 Aug. '29		M. Coburn, 30 Aug. '30		<i>Quartermaster.</i>	
Jer. Tracey, 25 do do		<i>Ensigns.</i>		Z. B. Brown, 29 Mar. '25	
W. S. Barker, 30 do '27		Jer. Smith, 21 Sep. 1824		<i>Surgeon.</i>	
		A. S. Hubble, 10 do '27		J. W. Barker, 30 Aug. '30	

### CHARLOTTE COUNTY MILITIA.

<i>First Battalion.</i>		S. Shearman, jr. 4 Feb. '29		D. M'Farlane, 12 do do	
<i>Colonel.</i>		Wm. Walton, 28 June, '30		W. M'Kenzie, 13 do do	
Hugh M'Kay, 1 Nov. 1793		John Buckstaff, 18 Aug. '31		I. Justison, 14 do do	
<i>Lieutenant Colonel.</i>		C. Frye, 6 April, '32		<i>Ensigns.</i>	
C. Campbell, 24 Mar. 1824		<i>Paymaster.</i>		John Linton, 28 Mar. '27	
<i>Major.</i>		J. Wilson, cap. 2 Sep. '25		R. Clinch, 2 Feb. '29	
Wm. Garnett, 1 March, '32		<i>Adjutant.</i>		C. Hawkins, 8 May, '30	
<i>Captains.</i>		J. H. Whitlock, c. 25 Se. '32		P. M'Diarmid, 10 July, '32	
Jas. Boyd, (rif.) 5 Dec. '24		<i>Quartermaster.</i>		D. Turner, 11 do do	
T. Connick, 19 May, '28		D. W. Jack, 25 Oct. '28		Geo. M'Kay, 12 do do	
Geo. Walton, 3 Feb. '29		<i>Surgeon.</i>		W. W. Hawkins, 13 do do	
W. Whitlock, ar. 4 do do		Samuel Frye.		Josiah Wetmore, 14 do do	
G. M'Master, s.f. 5 do do		<i>Second Battalion.</i>		C. Hilliard, 15 do do	
John Rodger, 28 June, '30		<i>Lieutenant Colonel.</i>		<i>Paymaster.</i>	
John Stubs, 3 April, '32		Thos. Wyer, 22 June, '24		P. Stubs, cap. 12 June, '28	
<i>Lieutenants.</i>		<i>Major.</i>		<i>Adjutant.</i>	
J. Moore, rif. 3 Feb. '29		Hugh Flaherty, 1 Jan. '32		W. Flaherty, cp. 13 Je. '25	
T. Berry, art. 4 do do		<i>Captains.</i>		<i>Quartermaster.</i>	
Jno. Grant, 5 do do		M. M'Farlane, 24 July, '12		P. Clinch, lt. 26 Mar. '27	
Jos. Walton, 28 June, '30		P. Clinch, 1 Apr. '21		<i>Third Battalion.</i>	
J. Aymar, s.f. 28 do do		Jed. Califfe, 1 June, '20		<i>Lieutenant Colonel.</i>	
J. Berry, 4 April, '32		H. Seelye, 27 May, '22		H. Hatch, 13 Feb. 1826	
<i>Second Lieutenants.</i>		Jas. Pratt, 22 July, '23		<i>Major.</i>	
G. F. Campbell, r. 5 De. '24		S. M'Farlane, 5 Dec. '24		C. R. Hatheway, 6 Mar. 26	
R. Wilson, rif. 19 May, '28		J. Mowatt, ar. 2 July, '29		<i>Captains.</i>	
R. Watson, rif. 19 do do		W. Hyslopp, 18 May, '30		Jno. Chaffey, 1 Dec. '19	
D. Townsend, s.f. 3 Feb. '29		S. Wallace, 10 July, '32		Joel Ingersoll, 1 June, '22	
S. H. Whitlock, 4 do do		Josh. Knight, 11 do do		Jno. Leeman, 9 June, '23	
D. Thompson, 28 Jne, '30		<i>Lieutenants.</i>		Josiah Haney, 12 June, '26	
G. M'Culloch, 29 do do		H. Matthewson, 10 May, '24		W. M'Lean, 13 do do	
J. Campbell, rif. 5 Ap. '32		A. Wetmore, 13 Jnne, '25		Jas. Brown, 3d Jan. '31	
S. Getty, 6 do do		T. H. Carmat, 26 Mar. '27		Wilford Fisher, 4 do do	
<i>Ensigns.</i>		W. Gray, art. 10 do '28		Philip Newton, 5 do do	
C. Bartlett, 5 Dec. '24		J. Missinett, ar. 11 do do		<i>Lieutenants.</i>	
E. Wilson, 12 Sep. '25		B. Millikin, art. 2 July, '29		D. Leeman, 27 May, '22	
T. Connick, 1 Apr. '27		P. Justison, 18 May, '30		J. E. Hatheway, 9 June, '23	
R. Hutchinson, 2 do do		G. M'Kenzie, 10 July, '32		J. Applehy, 12 do '26	
J. Connick, 19 May, '28		A. M'Cullum, 11 do do		John Lerd, 13 do do	
J. M'Kirdy, 2 Feb. '29					



Wm. Ferris, 7 Sept. '29  
 Wm. Curry, 9 do do  
 S. Ingersoll, 2 Aug. '30  
 James White, 3 Jan. '31  
 J. Cunningham, 4 do do  
*Ensigns.*  
 Wm. Burke, 30 Nov. '22  
 F. M'Kenny, 5 Dec. '24  
 J. Leonard, 13 June, '26  
 E. Wilson, 7 Sep. '29  
 W. Huskins, 8 do do  
 Ethel Smith, 2 Aug. '30  
 Saul. Cheney, 3 Jan. '31  
 Dan. Catcomb, 4 do do  
*Quartermaster.*  
 G. Guay, cap. 12 June, '26  
*Adjutant.*  
 W. Hatch, cap. 30 Nov. '22  
*Quartermaster.*  
 M. Caulkins, 25 Oct. '28  
*Surgeon.*  
 W. C. M'Stay, 18 May, '30  
 —————  
 Fourth Battalion.  
 —————  
*Lieutenant Colonel.*  
 David Mowatt, 1 Jan. 1832

*Major.*  
 N. Marks, 1 Jan. '32  
*Capeains.*  
 S. P. Frink, 1 June '23  
 Asa Upton, 3 do do  
 Jas. Brown, 1 June, '24  
 T. Armstrong, ar. 26 Mar. '27  
 J. Libby, 28 do do  
 J. Young, rif. 29 do do  
 Jos. Connick, 2 Feb. '29  
 Alex. Grant, 1 March, '32  
*Licutenants.*  
 W. Thompson, 9 June, '23  
 H. M'Allister, 27 Mar. '26  
 A. Clendenning, 28 do do  
 J. Frink, art. 31 do do  
 J. Clendenning, 6 Feb. '29  
 J. Buchanan, 4 April, '32  
 T. Crocker, 5 do do  
 W. Armstrong, 6 do do  
*Second Licutenants.*  
 Jno. Porter, 1 June, '24  
 J. Maxwell, art. 26 Mr. '27  
 J. Hill, rifle, 5 Feb. '29  
 D. Upton, 8 do do  
 A. Lindsay, 5 April, '32  
 T. Watt, 6 do do

S. Hill, (rifle) 7 do do  
*Ensigns.*  
 G. M. Porter, 8 June, '28  
 S. Hittings, 29 Mar. '27  
 T. Mitchell, 3 Feb. '29  
 A. Campbell, 4 April, '32  
*Adjutant.* '32  
 A. Campbell, (cap.) 2 Ap.  
*Quartermaster.*  
 G. Hunter, cap. 1 Mar. '32  
*Paymaster.*  
 J. Marks, cap. 1 Mar. '32  
*Surgeon.*  
 L. Wetson, 1 March, '32  
 —————  
 CAVALRY.  
 —————  
*Captain.*  
 Jas. Thompson, 23 May '31  
*First Licutenant.*  
 James Albee, 23 May, '31  
*Second Licutenant.*  
 Joel Hill, 23 May, '31  
*Cornet.*  
 John Cottel, 23 May, '31  
*Quartermaster.*  
 William Todd, 23 May '31

WESTMORLAND MILITIA.

Colonel William Botsford, Commanding.

First Battalion.  
 —————  
*Lieutenant Colonel.*  
 W. Chapman, 1 Jan. 1832  
*Major.*  
 R. Scott, jr. 31 July, '32  
*Captains.*  
 T. E. Smith, 11 June, '26  
 Wm. Smith, 12 do do  
 J. Chapman, 19 May, '28  
 Jas. Beatty, do do  
 M. Summers, 15 do do  
 E. Stiles, 16 do do  
 Wm. Wiley, 17 do do  
 A. Nevers, 18 do do  
 S. Underwood, 28 July, '32  
 John Crandell, 29 do do  
 S. Babirot, 30 do do  
 Robert Stiles, 21 May, '33  
 D. Hannington, 22 do do  
 Alex. Cain, 23 do do  
*Licutenants.*  
 J. Gesner, 12 June, '26  
 Jno. Jones, 19 May, '28  
 W. Bateman, 15 do '29  
 J.N. Chapman, 17 do do  
 S. Weldon, 13 do do  
 J.M'Cornick, 19 do do  
 W. Milne, jr. 29 July, '32  
 John Welling, 30 do do  
 John Stultz, 31 do do  
 P. Constantine, 1 Aug. do  
 John Scott, 21 May, '33  
 Jos. Hannington, 22 do do

John Boyd, 23 do do  
 Robert Dobson, 24 do do  
 Geo. Hannington, 25 do do  
*Ensigns.*  
 J. Nelson, 19 May, '28  
 S. S. Wilnot, 19 do do  
 J. Jacques, 16 May, '29  
 Zach. Lutz, 17 do do  
 F. Welling, 28 July, '32  
 T. Welling, 30 do do  
 R. D. Chapman, 31 do do  
 Samuel Mills, 2 Aug. do  
 F. Thibodeau, 3 do do  
 Geo. Cochran, 21 May, '33  
 Charles Holsted, 22 do do  
 Oliver Pitfield, 23 do do  
 David Oole, 24 do do  
 George Harper, 25 do do  
 James Welling, 26 do do  
*Paymaster.*  
 J. Robinson, cap. 12 Jly '26  
*Adjutant.*  
 J. Kelly, capt. 23 July, '23  
*Quartermaster.*  
 J. Charters, cap. 20 Nov '22  
 —————  
 Second Battalion.  
 —————  
*Lieutenant Colonel.*  
 A. E. Botsford, 1 Jan. 1832  
*Major.*  
 C. D. Smith, 25 Sep. '32  
*Captains.*  
 M. M'Eachran, 4 April, '26

G. Oulton, 5 do do  
 M. Cornwell, 6 do do  
 E. Allen, 7 do do  
 S. Easterbrook, 16 Jne. '28  
 Jas. Evans, 17 do do  
 W. P. Sayre, 20 July, '30  
 R. Taylor, 27 do do  
 W. Burnham, 30 May, '31  
 T. Lowerston, 31 do do  
 John Bulmer, 1 June, do  
 H. Chapman, 24 Sept. '32  
 Chip. Botsford, 25 do do  
 Jos. Bowser, 3d July, '33  
*First Licutenant.*  
 G. Hay, (art.) 30 May, '31  
*Licutenants.*  
 W. Raworth, 22 July, '23  
 Jos. Wells, 5 Apr. '26  
 Jno. Anderson, 6 do do  
 T. Ayre, 16 June, '28  
 R. Carter, 17 do do  
 H. Charters, 25 July, '30  
 T. Keillar, 27 do do  
 R. Chapman, 28 do do  
 T. Cochran, 29 do do  
 Jas. Cutler, 30 do do  
 G. Botsford, 31 do do  
 Geo. Ury, 1 Aug. do  
 C. Thibodeau, 24 Sep. '32  
 T. Trenholm, 25 do do  
 Wm. Evans, 26 do do  
 H. Orden, (2d lt. ar.) 27 do do  
 Ch. Dixon, (3d) 3 July, '33

John  
 J. D  
 G. T  
 M. O  
 W. J  
 Jos.  
 John  
 Jas.  
 Mr. S  
 Wm.  
 Wm.  
 M. C  
 Ch. I  
 G. D  
 G. E  
 Benj  
 Wm.  
 James  
 Geo. f  
 John  
 D. Cha  
 J. Say  
 R. Sm  
 Ass  
 M. Bac  
 T  
 Lieut  
 Philip  
 F  
 Lieut  
 J.A. M  
 Jno. Cl  
 A. Fra  
 J. M'D  
 G. Tay  
 A. Russ  
 Jas. Gil  
 R. M'L  
 Jno. Jo  
 W. Har  
 E. Hen  
 D. Per  
 A. Good  
 Wm. G  
 M. Ora  
 John O  
 Thos. U  
 R. M'D  
 F. Mor  
 Wm. J  
 J. Hen  
 A. Hen  
 Andrew

**Ensigns.**  
 John Raworth, 10 May, '24  
 J. Dowling, do do  
 G. Trenholm, 7 Apr. '26  
 M. Chapman, 9 do do  
 W. Dixon, 10 do do  
 Jos. Brown, 16 June, '28  
 John Bulmer, 17 do do  
 Jas. Black, 26 July '30  
 Mr. Sayre, 27 do do  
 Wm. Lamb, 28 do do  
 Wm. Carter, 1 June, do  
 M. Cornwell, 24 Sep. '32  
 Ch. Dixon, 25 do do  
 G. Boltonhouse, 26 do do  
 G. Easterbrooks, 27 do do  
 Benjn. Wells, 28 do do  
 Wm. Brown, 29 do do  
 James Maxwell, 31 do do  
 Geo. Scoullar, 9 July, '33  
 John Fawcett, 4 do do

**Adjutant.**  
 D. Chapman, cap. 4 Ap. '26

**Quartermaster.**  
 J. Sayre, jr. 22 July, '23

**Surgeon.**  
 R. Smith, 1 June, '10

**Assistant Surgeon.**  
 M. Backhouse, 22 July, '23

**Third Battalion.**

**Lieutenant-Colonel.**  
 Philip Palmer, 22 Oct. '33

**First Battalion.**

**Lieutenant Colonel.**  
 J.A. McDonald, 2 July, '29

**Major.**  
 Jno. Clark, 2d July, 1829

**Captains.**  
 A. Fraser, 1 June, '22  
 J. McDonald, 2 June, '22  
 G. Taylor, 4 do do  
 A. Russell, 5 do do  
 Jas. Gilmour, 7 do do  
 R. McLeod, 8 June '22  
 Jno. Joseph, 9 do do  
 W. Hamilton, 10 do do  
 E. Henry, 4 April, '26  
 D. Perley, 5 do do  
 A. Goodfellow, 6 do do  
 Wm. Gray, 28 June, '30  
 M. Oranny, 29 do do  
 John Campbell, 9 Aug. '31  
 Thos. Ullock, 10 do do

**Lieutenants.**  
 R. McDonald, 2 June, '22  
 F. Morrison, 5 do do  
 Wm. Joplin, 7 do do  
 J. Henderson, 11 do do  
 A. Henderson, 4 Apr. '26  
 Andrew Hay, 5 do do

**Captains**  
 Sam. Clark, 28 Nov. '22  
 W. Wilmot, 29 do do  
 Jno. Smith, 30 do do  
 Ezra Stiles, 10 June, '33  
 W. M'Almon, 11 do do  
 D. Cameron, 12 do do  
 J. E. Turner, 13 do do  
 J. Jos. Turner, 14 do do  
 T. B. Moore, (sr) 22 Oct. do

**Lieutenants.**  
 E. Peck, 26 Oct. '23  
 Wm. Read, 27 do do  
 Elias Peck, 10 June, '33  
 W. Kilpatrick, 11 do do  
 Jas. Brewster, 12 do do  
 Wm. Groce, 13 do do  
 J. Bealy, jr. 14 do do  
 O. Calkins, 15 do do  
 W. Fillimore, 16 do do  
 E. Stephens, (1st lt. art.)  
 22d Oct. do  
 Jos. Rodgers, (2d lt. art.)  
 23d Oct. do

**Ensigns.**  
 A. Robinson, 10 June, '33  
 John Read, 11 do do  
 Wm. Wallace, 12 do do  
 Danl. Steves, 13 do do  
 N. Wells, jr. 14 do do  
 Wm. Rogers, 15 do do  
 P. Sinclair, 16 do do  
 B. H. Newcomb, 17 do do

**NORTHUMBERLAND MILITIA.**

**J.T. Williston, 6 do do**  
**L. Robichaud, 8 do do**  
**Wm. Carman, 9 do do**  
**J.M. Johnson, 10 do do**  
**Jno. Fraser, 11 do do**  
**W. McDonald, 12 do do**  
**D. Shaw, 28 June, '30**  
**D. Johnson, 29 do do**  
**Jno. McLean, 1 July, do**  
**Jas. Hurlihy, 9 Aug. '31**  
**And. M'Innes, 10 do do**

**Ensigns.**  
 J. Osbaldson, 1 June, '22  
 A. Davidson, 2 do do  
 A. Morrison, 7 June, '22  
 A. Clark, 4 Apr. '26  
 P. Morrison, 5 do do  
 C. Clark, 6 do do  
 I. Paley, 7 do do  
 W. Taylor, 8 do do  
 J. Stewart, 9 do do  
 D. Fraser, 10 do do  
 A. Ritchie, 28 June, '30  
 J. Porter, 29 do do  
 J. M'Intyre, 1 July, do  
 Wm. Douglas, 2 do do  
 D. McLeod, 9 Aug. '31  
 G. Williston, 10 do do

**Paymaster. (do.**  
 E. Peck, jr. (esp.) 10 June  
**Adjutant.**  
 J. Sterritt, cap. 27 Ap. '24

**Surgeon.**  
 Wm. Wilson, 25 Oct. '23

**Quartermaster.**  
 Geo. Rogers, 22 Aug. '25

**Fourth Battalion.**

**Major.**  
 H. Chapman, 25 July, '30

**Captains.**  
 P. Chapman, 30 May, '31  
 J. Anderson, 31 do do  
 John Avard, 1 June, do  
 Jno Trenholm, 2 do do

**Lieutenants.**  
 Wm. Hughson, '30 May, '31  
 Wm. Anderson, 31 do do  
 Liffey Allan, 1 June, do  
 John Downing, 2 do do  
 Robert Copp, 18 May, '32

**Ensigns.**  
 John Ogden, 18 May, '32  
 Wm. McMorris, 19 do do  
 Benjn. Allan, 20 do do

**Adjutant.**  
 J. Chapman, (c) 25 July, '30

**Quartermaster.**  
 G. Allan, (lt.) 50 May, '31

**Adjutant.**  
 D. McDonald, 9 June, '23

**Quartermaster.**  
 J. Davidson, 9 June, '23

**Surgeon.**  
 Alex. Key, 28 June, '30

**Second Battalion.**

**Lieutenant Colonel.**  
 A. Davidson, 2 July, 1829

**Major.**  
 J. D. Fraser, 2 July, 1829

**Captains.**  
 Jno. Astle, 20 Aug. '13  
 Jno. Price, 21 do do  
 Alex. Fraser, 19 do '22  
 C. McDonald, 20 do do  
 Jared Betts, 22 do do  
 E. Fowler, 23 do do  
 Jno. Fraser, 1 June, '23  
 Abel Pond, 10 May, '24  
 D. Croker, 11 do do  
 Wm. Loch, 25 Apr. '25  
 D. M'Kay, 26 do do  
 R.M'Laughlin, 27 do do  
 J. Donald, 12 June, '27  
 W. Fiddes, 18 May, '30



A. Duncan, 19 May, '30	P. Brannen, '21 May, '30	T. Underhill, 18 May, '30	
Wm. End, 20 do do	T. Coughlin, 22 do do	A. Campbell, 19 do do	
<i>Lieutenants.</i>			
D. Tozer, 2 June, '23	W. Saunders, 19 Aug. '22	R. Jardine, 21 do do	
T. Smith, 11 May, '24	J. Tozer, 9 May, '24	D. Mott, 22 do do	
A. Moores, 12 do do	R. Wasson, 10 do do	H. Hamanill, 12 Aug. '31	
A. Hovey, 13 do do	M. Hovey, 11 do do	Michael O'Brien, do do	
N. Ritchie, 23 Apr. '25	T. Newcomb, 13 do do	<i>Adjutant.</i>	
G. Henderson, 29 do do	A. Young, 29 Apr. '25	W. Harley, cap. 19 Au. '22	
E. M'Quillan, 12 June, '25	P. Davidson, 30 do do	<i>Quartermaster.</i>	
H. B. Allison, 13 do do	T. Underhill, 12 June, do	E. Baker, (lt.) 2 April, '33	
R. Henderson, 14 do do	J. Gillan, 13 do do	<i>Surgeon.</i>	
J. Hovey, 18 May, '30	C. Coughlan, 14 do do	Jas. Petrie, 9 May, '24	
J. Sutton, 19 do do	J. Simpson, 16 do do		
Geo. Kerr, 20 do do	D. Clarke, 22 Feb. '30		

### GLOUCESTER MILITIA.

#### First Battalion.

*Lieutenant Colonel.*  
R. Ferguson, 1 Jan. 1832  
*Major.*

#### *Captains.*

J. Miller, rif. 9 June, '23  
Jno. Shea, 15 June '24  
Jas. Lee, 12 July, 24  
J. Douglass, 26 do '25  
D. M'Intosh, 27 do do  
A. Ferguson, 26 Jan. '27  
W. Munro, 15 May, '29  
Jno. Fraser, 18 do do  
Benj. Dawson, 23 May, '31  
John M'Intosh, 24 do do

#### *Lieutenants.*

Wm. Gray, 13 July, '24  
Wm. Craig, 13 July '25  
J. Fleming, 14 do do  
C. Commeau, 15 do do  
M. Newton, 8 do '26  
R. Clyde, rif. 9 Jan. '27  
W. Young, 9 do do  
R. Ferguson, jr. 26 do do  
J. Montgomery, 27 do do  
S. Waitte, 15 May, '29  
J. Robertson, 24 May, '31  
A. Degrace, 25 do do

#### First Battalion.

#### *Major.*

D. M'Almon, 21 May, '33  
*Captains.*  
G. Pagan, 25 Aug. '21  
R. Jardine, 21 Feb. '26  
J.P. Ford, [ri.] 25 Nov. '26  
J.W. Weidon, 25 Oct. '23  
Colin Rankin, 21 May, '33  
Saml. Girvan, 22 do do  
Wm. Brait, 23 do do  
Hugh M'Kay, 24 do do

#### *Ensigns.*

R. Connacher, 13 July, '25  
Jno. Edgar, 10 do do  
W. M'Kenzie, 27 Jan. '27  
D. Racarty, 29 do do  
A.M'Pherson, 16 May, '29  
N. Busted, 22 Feb. '30  
Peter Adams, 23 May, '31  
Geo. Munro, 24 do do  
J. Bpt. Roy, 25 do do

#### *Adjutant.*

J.M'Pherson, cap. 11 Oc. '23  
*Quartermaster.*  
J. Read, lieut. 15 May, '29

#### Second Battalion.

#### *Lieutenant Colonel.*

John Young, 1 Jan. 1832  
*Major.*

M. Landry, 1 March, '32  
*Captains.*

W. Drysdale, 14 June, '24  
H. Adams, 11 July, '25  
A. Landry, 12 do do  
Jno. Adams, 13 do do  
M. Campbell, ad. 12 Jly. '26  
R. Hixon, 1 March, '32  
Mich. Martin, 2 do do  
Wm. Young, 3 do do  
Peter DeGrace, 4 do do

### KENT MILITIA.

#### *Lieutenants.*

P. Campbell, 21 Feb. '28  
J. Muzeroll, 21 May, '33  
W. Roach, 22 do do  
R. Haddow, 23 do do  
Jno. Craig, 24 do do  
W. Fitzgerald, 25 do do  
J.A. Clare, [r] 26 do do  
Wm. Girvan, 27 do do  
Dav. Swayne, 28 do do

#### *Ensigns.*

W. Harper, 27 Nov. '26  
P. Sutherland, 15 May, '29

John Doen, 5 Mar. '32

#### *Lieutenants.*

J. Gennie, 13 July, '28  
J. Spence, 14 do do  
A. Campbell, 28 Jan. '27  
P. Campbell, 29 do do  
Urban Landry, 1 Mar. '32  
A. Louiser, 2 do do  
John Vincent, 3 do do  
John Furlong, 4 do do  
Wm. Jardine, 5 do do  
James Young, 6 do do  
James Dorin, 7 do do  
M. Duval, 8 do do  
Geo. Sivret, 9 do do  
C. Coughlin, 10 do do

#### *Ensigns.*

A. Landry, 1 Mar. '52  
A. Robichaud, 2 do do  
Jas. Sewell, 3 do do  
Thomas Keir, 4 do do  
And. Wilson, 5 do do  
Rene Cheson, 6 do do

#### *Adjutant.*

M. Campbell, cp. 15 My. '29

#### *Paymaster.*

H.W. Baldwin, c. 1 Mar '32

#### *Quartermaster.*

Jno. Ritchie, 15 May, '29

A. M'Michael, 21 May, '33

John Miller, 22 do do  
Andrew Dixon, 23 do do  
David Wright, 24 do do  
John Wheten, 25 do do  
John Clare, [r.] 26 do do  
John Main, 27 do do  
Pat'k. Donnelly, 28 do do

#### *Adjutant.*

T. Lansdowne, [cap] 25 Oc.

#### *Quartermaster.*

D. Gifford, [en] 21 May '33

#### *Surgeon.*

R. Masterton, 13 Feb. '26.

May, '30  
do do  
do do  
do do  
do do  
Aug. '31  
do do  
Apr. '32  
er.  
April, '33  
May, '24  
Mar. '32  
ts.  
July, '28  
do do  
Jan. '27  
do do  
Mar. '32  
do do  
do do  
do do  
do do  
do do  
do do  
do do  
do do  
do do  
do do  
Mar. '52  
do do  
do do  
do do  
do do  
do do  
do do  
do do  
15 My. '29  
er.  
. 1 Mar. '32  
ster.  
5 May, '29  
21 May, '33  
22 do do  
23 do do  
24 do do  
25 do do  
26 do do  
27 do do  
28 do do  
nt. '28  
resp] 25 Oct.  
ster.  
21 May '33  
n.  
3 Feb. '26

**Second Battalion.**  
**Lieutenant Colonel.**  
**James Long, 1 Jan. 1832**  
**Major.**  
**Captains.**  
John Bowler, 23 May, '31  
W. Hannington, 28 do do  
Ira Hicks, 27 do do  
Pascal Porrier, 28 do do  
Robert Dyart, 9 Aug. do  
**Lieutenant Colonel.**  
Wm. M'Leod, 29 May, '33  
**Major.**  
Philip Dann, 22 May, '33  
**Captains.**  
J.S. Wetmore, 27 May, '22  
Philip Nase, 29 Apr. '28  
John Smith, 19 May, '27  
T. Botswick, 25 Oct. '29  
A. Price, 26 do do  
Zeb. Jones, 28 July, '32  
And. Hamm, 29 do do  
Jer. Mabee, 29 May, '33  
Wm. Dickson, 30 do do  
Thos. Flewelling, 31 do do  
Joseph A. Lyon, 1 June do  
Lewis Carvell, 2 do do  
John Wright, 5 Nov. do  
**Lieutenants.**  
W. J. Flewelling, 27 May, '22  
H. Bulvea, 10 May, '24  
E. Gorum, 25 Oct. '28  
James Reid, 28 July, '32  
D. Harrington, 30 do do  
Geo. Harding, 31 do do  
P. M'Kenzie, 29 May, '33  
James Prince, 30 do do  
Jas. D. Williams, 31 do do  
Gab. Worden, 1 June do  
Wm. Gorum, 2 do do  
James Bulvea, 2 do do  
Dav. Hamm, [rif.] 3 do do  
Benj. Cole, do 4 do do  
N. Warren, 5 Nov. do  
**Ensigns.**  
J. Flewelling, 27 May, '22  
Geo. Neal, 19 May, '28  
I. H. Foster, 26 Oct. do  
W. G. Harding, 30 July, '32  
Henry Nase, 31 do do  
John Piers, 29 May, '33  
John Flewelling, 30 do do  
Robert Crawford, 31 do do  
Isaac Vanwart, 1 June do  
James M'Leod, 2 do do  
William Gorum, 3 do do  
James Kiersted, 5 Nov. do  
**Adjutant.**  
D. Wetmore, cap, 1 My. '27

Syd. Chapman, 10 do do  
Jacob Geiser, 22 Oct. '33  
Thos. Avinson, 23 do do  
**Lieutenants.**  
Chas. Surtlett, 26 Nov. '26  
Israel Hicks, 23 May, '31  
T. Busha, 24 do do  
L. Seamonds, 27 do do  
Wm. Ward, 9 Aug. do  
E. Atkinson, 22 Oct. '33  
P. Robichaud, 23 do do

**Ensigns.**  
Placid Porrier, 23 May, '31  
Jno. Sheridan, 24 do do  
J. Thibodeau, 25 do do  
Ira Hicks, jr. 27 do do  
P. M'Phelim, 9 Aug. do  
P. A. Purdy, 10 do do  
Greg. Cornice, 22 Oct '33  
John Burk, jr. 23d do do  
**Adjutant.**  
A. B. Smith, c. 23 May, '31

**KING'S COUNTY MILITIA.**

**First Battalion.**  
**Lieutenant Colonel.**  
D. Pickett, c. 31 July, '32  
**Quartermaster.**  
D. Mather, lt. 25 July, '30  
**Second Battalion.**  
**Lieutenant Colonel.**  
J. C. Vail, 1 Jan. 1832  
**Major.**

**Third Battalion.**  
**Lieutenant Colonel.**  
C. Wetmore, 12 Mar. '32  
**Major.**  
A. C. Evanson, 18 May, '32  
**Captains.**  
J. Davis, 10 May, '24  
J. Humbert, rif. 5 Sep. '25  
S. Fairweather, 14 Jnc, '26  
J. Upton, 14 Sep. '29  
Wm. Gion, 12 June, '30  
J. Wetmore, 13 do do  
A. Ketchum, 25 July, do  
W. Gunter, 25 Oct. do  
T. S. Demill, 12 July, '31  
Thos. Corry, 13 do do  
S. Sprague, 18 May, '32  
J. Fayerweather, 21 May '33  
Jes. Schoales, 22 Oct. do  
**Lieutenants.**

**Captains.**  
S. Freeze, 11 Oct. '25  
O. Barbarie, 24 Nov. '25  
S. Goslin, 27 do do  
Jas. Ryan, 28 do do  
O. B. Coogle, 30 May, '31  
Daniel Sheck, 13 Mar. '32  
Abr. Johnston, 14 do do  
S. M'Kully, 18 May, do  
**Lieutenants.**  
R. M' Monagle, 25 Aug. '23  
C. Stockton, 2 July, '29  
Jno. M'Lean, 3 do do  
I. Parlee, 30 May, '31  
M. Frazee, 12 Mar. '32  
John Burgess, 13 do do  
John Pearson, 14 do do  
G. Dungfield, 18 May, do  
Geo. Motton, 19 do do  
X. Coogle, rif. 23 do do  
J. Hallett, rif. 21 do do

**Ensigns.**  
W. Coates, 12 June, '30  
Wm. Teakels, 30 May, '31  
Jas. Secord, 12 Mar. '32  
Jacob Wright, 13 do do  
E. Twynham, 14 do do  
John O. Vail, 16 May, do  
N. Morton, 19 do do  
T. Harrison, 20 do do  
Dug. Carmichael, 13 June, '33  
**Paymaster.**  
Jno. Marten, 6 Mar. '28  
**Adjutant.**  
J. Gidney, [capt.] 25 Oct. '32  
**Quartermaster.**  
Jas. Hoyt, 11 Oct. 1823

**Ensigns.**  
G. Sprague, 17 June, '26  
H. A. Demill, 14 Sep. '29  
A. Dickie, rif. 2 Feb. '30  
B. Cromwell, r. 23 do do  
Jno. Hays, 11 June do  
T. Dixon, 12 do do  
J. Sediquiest, 13 June, '30  
J. M'Creedy, 14 do do  
M. Fowler, 25 July, do  
W. Debow, 25 Oct. do  
J. Wanmaker, jr. 12 Jul '31  
Caleb Davis, jr. 13 do do  
G. Hughson, 19 May, '32  
Zeb. Davis, 13 June, '33  
Robt. Wallace, 22 Oct. do  
**Ensigns.**  
J. M. Fowler, 11 Sep. '29  
H. Dickie, jr. 12 June, '30  
C. E. Smith, 13 do do  
J. F. Sherwood, 25 Oct. '30  
Robt. Spragg, 13 July, '31  
Jessie Gillies, 19 May, '32  
C. Sprague, 20 do do  
Henry Deforest, 21 May '33  
Hbw'd. Sprague, 13 June, '33  
Abnt. DeMil, 2 Sept. do  
Jas. Alexander, 22 Oct. do  
**Adjutant.**  
A. English, (capt.) 25 Aug. 1823

**Ensigns.**  
W. Coates, 12 June, '30  
Wm. Teakels, 30 May, '31  
Jas. Secord, 12 Mar. '32  
Jacob Wright, 13 do do  
E. Twynham, 14 do do  
John O. Vail, 16 May, do  
N. Morton, 19 do do  
T. Harrison, 20 do do  
Dug. Carmichael, 13 June, '33  
**Paymaster.**  
Jno. Marten, 6 Mar. '28  
**Adjutant.**  
J. Gidney, [capt.] 25 Oct. '32  
**Quartermaster.**  
Jas. Hoyt, 11 Oct. 1823

*Quartermaster.*  
 Samuel Hallett, 21 Aug '32  
*Surgeon.*  
 C. Wilson, 12 June, '26

**CAVALRY,**  
 Attached to the 3d Batt.  
*Captain.*  
 James Peters, 5 June, '32  
*First Lieutenant.*  
 Danl. Hatfield, 5 June, '32

*Second Lieutenant.*  
 Jos. Gillies, 5 June, '32  
*Cornet.*  
 Chas. Perkins, 5 June, '32  
*Paymaster.*  
 J. Wetmore, c. 18 May, '32

**QUEEN'S COUNTY MILITIA.**

Lieutenant-Colonel Harry Peters, Commanding.

**First Battalion.**

*Lieutenant Colonel.*  
 H. Peters, 20 June, 1825  
*Major.*  
 Wm. Foshay, 20 Aug. '27  
*Captains.*  
 T. Hewlet, 6 June, '23  
 R. Golding, ad. 25 May, '24  
 T. R. Wetmore, 11 Sep. '26  
 A. Smith, 20 Aug. '27  
 D. Smith, 21 do do  
 H. Lyons, 22 do do  
 J. Corbet, 23 do do  
 A. Gunter, 25 July, '30  
 C. Smith, 7 Sep. '30  
 John Bulyea, 20 Aug. '33  
 Brad. Hewlett, 21 do do  
*Lieutenants.*  
 R. Smith, jr. 21 June '25  
 J. Colwell, 20 Aug. '27  
 H. Babbitt, 21 do do  
 J. Graham, 27 July, '30  
 R. Dingee, 7 Sep. '30  
 R. Hewlett, 23 Aug. '31  
 Geo. Vail, 24 do do  
 Abm. Merritt, 20 Aug. '33  
 I.H. DeVeber, 21 do do  
 Thos. Graham, 22 do do  
*Ensigns.*  
 C. Sterritt, 21 June, '25

S. Currie, 20 Aug. '27  
 Jno. Glass, 21 Aug. '27  
 F. Wood, 29 July, '30  
 John Currie, 22 Aug. '31  
 Asa Smith, 23 do do  
 John Mays, 20 Aug. '33  
 Jas. E. Smith, 21 do do  
 Rich. Graham, 22 do do  
 Ch. Currie, 23 do do  
*Adjutant.*  
 R. Golding, 27 Apr. '24  
*Paymaster.*  
 N.H. DeVeber, 24 Aug. '29  
*Surgeon.*  
 R. P. Smith, 24 Aug. '29  
*Quartermaster.*  
 W F Bonnell, lt. 18 May '32

**Second Battalion.**

*Major.*  
 P. Yeamans, 23 May '31  
*Captains.*  
 Jno. Earle, 7 June, '23  
 J. M'Lean, 8 do do  
 A. Flowers, 10 do do  
 J. Seacord, 20 Aug. '27  
 J. M'Allister, 21 do do  
 S. White, 30 Aug. '30  
 J. Humphreys, 31 do do  
 A. Branscomb, 26 July, '31

Jas. Butler, 27 July, '31  
 James Price, 2 Sept. '33

*Lieutenants.*  
 J. Calkins, 10 June, '23  
 L. M'Lean, 11 do do  
 C. L. Corey, 20 Aug. '27  
 J. M'Donald, 22 do do  
 H. Briggs, 31 do do  
 J. Keith, 1 Sep. do  
 Peters Cox, 26 July, '31  
 Robt. Yeamans, 27 do do  
 A. B. M'Donald, 2 Sep. '33  
 James Keith, 3 do do

*Ensigns.*  
 T. Corey, 7 June, '23  
 E. Stone, 9 do do  
 D. Stilwell, 10 June, '23  
 A. Corey, 20 Aug. '27  
 J. Shearer, 21 do do  
 Geo. Currie, 31 do do  
 J. M'Donald, 26 July, '31  
 E. Briggs, 27 do do  
 John Mullin, 2 Sep. '33  
 Ephraim Briggs, 3 do do  
 Jess Alwood, 4 do do

*Adjutant.*  
 J.M'Donald, ep. 20 Au. '27  
*Quartermaster.*  
 D. Palmer, 20 Aug. '27

**THE ROYAL FAMILY OF GREAT BRITAIN.**

KING WILLIAM IV. born August 21, 1765; married July 11, 1818, to ADELAIDE AMELIA LOUISA TERESA CAROLINE, sister of the reigning Duke of Saxe-Meiningen, born August 13, 1792.

*Royal Princes and Princesses.*—Augusta Sophia, born Nov. 8, 1768—Elizabeth, born May 22, 1770; married April 7, 1818, to Frederick Joseph Louis, Landgrave of Hesse-Homburg, who died April 2, 1829, in his 61st year.

Ernest Augustus, Duke of Cumberland, born June 5, 1771; married May 29, 1815, Fredrica Sophia Carolina, daughter of the Duke of Mecklenberg Strelitz, and widow of Frederick William, Prince of Salms Braunsfels, born March 2, 1788. *Issue,* George Frederick, born May 27, 1819.

Augustus Frederick, Duke of Sussex, born January 27, 1773.

Ac  
 marr  
 grave  
 26, 1  
 Ma  
 So  
 Pr  
 ria, i  
 Ear  
 Visc  
 Lord  
 Mar  
 Visc  
 Visc  
 Visc  
 Hon.  
 Sir J  
 Lord  
 Righ  
 Duke  
 Lord  
 Lord  
 Edwa  
 Mr. J  
 Mr. F  
 Lord  
 Sir J  
 Duke  
 Duke  
 Earl  
 Marq  
 Visc  
 Righ  
 Sir T  
 Sir V  
 Marq  
 Lord  
 Hon.  
 Righ  
 Philip

Adolphus Frederick, Duke of Cambridge, born February 24, 1774; married May 7, 1818, to Augusta Wilhelmina Louisa, niece of the Landgrave of Hesse; born July 25, 1797. *Issue*, George William, March 26, 1819. Augusta Caroline, July 19, 1822.

Mary, Duchess of Gloucester, born April 25, 1776.

Sophia, born November 3, 1777.

*Present order of Succession to the Crown.*—Alexandrina Victoria, issue of the late Duke of Kent, born May 24, 1819.

### HIS MAJESTY'S MINISTERS.

Earl Grey, first Lord of the Treasury,  
Viscount Althorpe, Chancellor of the Exchequer.  
Lord Brougham, Lord Chancellor.  
Marquis of Lansdowne, President of the Council.  
Viscount Goderich, Lord of the Privy Seal.  
Viscount Melbourne, Secretary of State for Home Department.  
Viscount Palmerston, Secretary of State for Foreign Department.  
Hon. E. G. Stanley, Secretary of State for the Colonies.  
Sir J. R. Graham, bart. First Lord of the Admiralty.  
Lord Auckland, Master of Mint and Board of Trade.  
Right Hon. C. Grant, President of Board of Control.  
Duke of Richmond, Post Master General.  
Lord Holland, Chancellor of the Duchy of Lancaster.  
Lord John Russell, Paymaster of the Forces.

[*The above, form the Cabinet.*]

Edward J. Littleton, Esq. Secretary of State for Ireland.  
Mr. J. Lefevre, Under Secretary for the Colonies,  
Mr. Edward Ellice, Secretary of War.  
Lord Hill, Commander in Chief of the Forces.  
Sir James Kempt, Master General of Ordnance.  
Duke of Devonshire, Lord Chamberlain.  
Duke of Argyll, Lord Steward.  
Earl of Albermarle, Master of the Horse.  
Marquis of Winchester, Groom of the Stable.  
Viscount Duncannon, First Commissioner of Land Revenue.  
Right Hon. C. Poulett Thompson, Treasurer of the Navy, and Vice President of the Board of Trade.  
Sir Thomas Denman, Chief Justice.  
Sir William Horne, Attorney General,

### MINISTRY OF IRELAND.

Marquis of Wellesley, Lord Lieutenant.  
Lord Plunkett, Lord Chancellor.  
Hon. R. H. Vivian, Commander of the Forces.  
Right Hon. Sir R. F. Blackburn, Attorney General.  
Philip Crampton, Esquire, Solicitor General.

## ROADS.

### *From St. John to Fredericton, by the Nerepis.*

	Miles.
Harding's, (Yorkshire tavern,)	4
Brundage's,	10
Mather's, (Douglas Arms,)	4
J. O. Betts',	12
Darby Gillan's,	10
W. Smith's,	7
Morrison's (Oromocto,)	7
Fredericton,	11
<b>Total—</b>	<b>65</b>

### *From St. John to St. Andrews.*

To Robertson's,	5
Tilton's, (Musquash,)	10½
M'Laughlin's,	6
Gray's,	5
M'Gowan's, (half way)	6½
Watters'	3
Shaw's, (Magaguadavic,)	9
Burns' (St. Patrick,)	10
Turner's,	3
St. Andrews,	9
<b>Total—</b>	<b>67</b>

### *St. John to Fort Cumberland.*

To Fearerby's,	8
Beatty's,	6½
Hampton Ferry,	10
Hay's,	5
Finger Board, Norton,	6
Mill Stream, Lyon's,	7
Sussex Vale,	6
<b>To Sussex Vale, 48½</b>	
Snider's,	10
Blakeney's,	7½
Martin's,	10
Pitfield's,	10
Perrigo's, (Bend,)	15

### *To the Bend of Peticodiac, 101*

Charter's,	14
Kinnear's,	11
Sackville, (Bass,)	9
Fort Cumberland,	6

**Total—142**

**Fort Cumberland to Halifax, 131.**

### *From St. John to Miramichi.*

	Miles.
To the Bend,	201
Smith's, Shediac,	15
Thomson's, Cocaigne,	8
Bectouche,	11
Main River,	2
Choak-fish,	11
Richibucto,	13
Kouchibouguac,	10
Bay du Vin,	10
M'Beth's, (Black River)	10
Chatham,	11

**Total—206**

### *St. John to Fredericton, on the Eastern side of the River.*

To Black's farm,	7
Gondola Point,	9
Kingston,	4
Head of Bellisle,	14
Washademoac,	13
Jemseg Ferry,	6
Tilley's, (Sheffield,)	1
Widow Perley's,	8
Fredericton,	12

**Total—86**

### *Fredericton to Miramichi.*

To S. Miller's,	11
Young's,	6
M'Leod's,	5
Craig's,	13
Boice's,	7
Wilson's,	7
Hunter's,	7
Moore's,	6
Fowler's,	12
Cochrane's,	10
Astle's,	8
Parker's,	8
Court House,	8

**Total—108**

### *Fredericton to Quebec.*

To the Grand Falls,	137
Madawaska Falls,	45
Kamarouska,	85
Quebec,	107

**Total—374**

1. I  
 ter of  
 2. I  
 chaldr  
 3. I  
 Salt, c  
 sured a  
 4. F  
 and ho  
 5. F  
 Sugar  
 6. F  
 10 cwt  
 and ho  
 7. F  
 8. F  
 of Earth  
 a libd.  
 tity in l  
 mon loa  
 9. F  
 5 brls.  
 Turpen  
 or the s  
 exceedi  
 10. I  
 Gin, B  
 load of  
 11. I  
 ous Liq  
 12. F  
 4 cwt.  
 13. F  
 14. F  
 15. F  
 16. F  
 17. F  
 Staves,  
 boxes,  
 of any c  
 18. I  
 19. I  
 cles, no  
 The  
 Cove, t  
 Prince



## Rates of Cartage in Saint John.

	First District.	Second District.	Third District.	Fourth District.	Fifth District.	
	s. d.	s. d.	s. d.	s. d.	s. d.	
ramichi.						
Miles.						
201						
15						
8						
11						
2						
11						
13						
10						
10						
10						
11						
<b>Total—206</b>						
on, on the						
e River.						
7						
9						
4						
14						
13						
16						
13						
8						
12						
<b>Total—86</b>						
ramichi.						
11						
6						
5						
13						
7						
7						
7						
6						
12						
10						
8						
8						
8						
<b>Total—108</b>						
Quebec.						
137						
45						
85						
107						
<b>Total—374</b>						
	1. For a load of Wood, containing a quarter of a Cord,	0 7½	0 9	10½	1 0	1 1½
	2. For a load of Coals, containing half a chaldron,	1 3	1 4½	1 6	1 7	1 9
	3. For a load containing 15 bushels Grain, Salt, or Potatoes, or any other articles measured at loading or unloading, except coals,	10½	1 0	1 1½	1 3	1 4½
	4. For a pipe of Wine, Gin, or Brandy, and housing within the door of the first floor,	3 0	3 1½	3 3	3 4½	3 6
	5. For a puncheon of Rum, or a tierce of Sugar from 7 to 10 cwt. and housing,	1 6	1 7½	1 9	1 10½	2 0
	6. For a pun. Molasses, a hhd. Sugar, of 10 cwt. or upwards, or a hogshead Tobacco, and housing,	2 0	2 1½	2 3	2 4½	2 6
	7. For a hhd. or pun. Cider, and storing,	1 3	1 4½	1 6	1 7½	1 9
	8. For a hhd. of Lime, or a hhd. or crate of Earthenware, or 2 tierces of Earthenware, a hhd. Dried Fish, 2 tierces Coffee, or quantity in bags, not exceeding 12 cwt. or a common load of household goods,	1 0	1 1½	1 3	1 4½	1 6
	9. For a load containing 6 brls. Flour, or 5 brls. Sugar, Fish, Beef, Pork, Tar, Pitch, Turpentine, or Cider, or half a ton of Iron, or the same quantity of Cordage, in coils not exceeding 4 cwt.	0 9	10½	1 0	1 1½	1 3
	10. For a 64 gallon cask of Wine, Rum, Gin, Brandy, Molasses, or Porter, or for a load of Sand, Gravel, or Stones,	1 0	1 1½	1 3	1 4½	1 6
	11. For a load of 4 barrels of any spirituous Liquor, or Molasses,	1 0	1 1½	1 3	1 4½	1 6
	12. For Cables and Cordage in coils above 4 cwt. or if to coil, per ton,	5 0	5 3	5 6	5 9	6 0
	13. For Hay, loose, per Ton,	5 0	5 3	5 6	5 9	6 0
	14. For ditto, screwed, per ditto,	2 6	2 8	2 10	3 0	3 2
	15. For Bricks, per thousand,	4 0	4 3	4 6	4 9	5 0
	16. For Lumber, per thousand feet,	3 0	3 3	3 6	3 9	4 0
	17. For a load of Shingles, Hoop Poles, Staves, Heading, Treennails, Smoked Fish in boxes, Salmon in kids, Dry Goods, or a load of any other articles not herein before named,	0 9	10½	1 0	1 1½	1 3
	18. Dried Fish, per load of 15 cwt.	1 3	1 4½	1 6	1 7½	1 9
	19. For the cartage of any article or articles, not exceeding half a load,	0 6	0 7½	0 9	10½	1 0

The *First District* to extend from the Public Landing in the Upper Cove, to any part of St. John, Water, or Dock-streets; to that part of Prince William-street between Princess-street and Samuel Miles'



house, inclusive; to that part of King-street lying to the Westward of Germain-street; and to any part of Church or Cross-streets.

The *Second District* to extend from the same Public Landing to any place without or beyond the first district in any part of Germain-street, to the Northward of the Church; and in any part of York Point, beyond the property of Mr. Jennings.

The *Third District*, to extend from the same Public Landing to any place without or beyond the second district in any part of Prince William-street; in any part of Princess and Duke-streets, west of Charlotte-street; in any part of Germain-street or Charlotte-street, north of Queen-street; in any part of Union-street, west of Charlotte-street; and in any part of the upper or northern end of Prince William street.

The *Fourth District*, to extend from the same Public Landing to any place without or beyond the third district, in any part of King's Square; in any part of the residue of Germain street; in any part of Queen, St. James' and St. Andrew's streets, west of Charlotte street; in any part of Princess and Duke streets, and the north side of Queen's Square, west of Sidney street.

The *Fifth District*, to extend from the said Public Landing to any place without or beyond the fourth district.

#### PUBLIC PORTERS AND HAND-CART-MEN.

For loading, carrying, and housing, any goods or any other articles on any hand-cart, from the Market Slip in King's and Queen's Wards, or from any other place within the limits of the first district, to any other place within the said several five districts, the rates or prices are as follow: For the first district, three pence; second district, three pence half-penny; third district, four pence; fourth district, four pence half penny; fifth district, five pence.

### Rates of Pilotage,

*Established by a Law or Ordinance of the Common Council of the City of Saint John, passed 5th September, 1833.*

Five Shillings per foot, for bringing any ship or vessel into the Harbour of Saint John, and mooring her in a safe place or berth, or securing her alongside of one of the wharves; and five shillings per foot for removing and taking any ship or vessel out of the harbour.

In cases where Pilots shall be detained on board of vessels, under and by virtue of the Quarantine or Health Laws of the Province, they shall be entitled to demand and receive from the Masters of such vessels, the sum of Ten Shillings per day, for every day of such detention, in addition to the allowance aforesaid.

Coasting vessels, going from one part of the Bay of Fundy to another,—British or Foreign steam boats, or British vessels drawing under eight feet of water, are not compelled to take Pilots. In cases where Pilots are employed on board such vessels, they are to be paid according to the rates above mentioned.

For removing vessels from any mooring ground to any wharf, or from any wharf to any mooring ground, or from one wharf to another wharf, and seeing them properly moored or secured, the following rates:—For vessels not exceeding 100 tons, 7s. 6d.; for vessels over 100 and not exceeding 200 tons, 10s.; for vessels over 200 and not exceeding 300 tons 15; and for all vessels over 300 tons, the sum of 20s.

CH  
A hun  
se  
You c  
h  
CH  
Wh  
Wit  
But by  
My  
Wit  
And a  
A pl  
For  
Transp  
But  
To s  
My las  
ANSW  
ZLE  
Cou  
Long i  
ey  
Short i  
Big in  
Full in  
sh  
Long i  
And ne  
Winfls  
Vpr  
Vpro  
Vpzm  
Vpziw  
Nzvy  
Nzviy  
Gzy z  
Gzx v  
E  
I  
I  
Th  
toaste  
setts  
" 7  
days  
rance  
ing th  
killed

CHARADE 4—(Selected.)

A hundred, a circle, and a vowel  
set down;  
You don't like to do it—I'll bet  
half a crown.

CHARADE 5—(Selected.)

When all things were made  
Without any aid,  
But by the Creator's command,  
My last then was formed,  
With beauty adorned,  
And always continues to stand.  
A place round a fort,  
For strength and support,  
Transpose for my first and enrol,  
But keep this in mind,  
To solve when inclin'd,  
My last is enclosed by my whole.

ANSWER TO LAST YEAR'S PUZZLE.—Description of a Good Cow.

Long in her sides, bright in her eyes,  
Short in her legs, thin in her thighs,  
Big in her ribs, wide in her pins,  
Full in her bosom, small in her shins,  
Long in her face, fine in her tail,  
And never deficient in filling a pail.

A PUZZLE.

Wmfsbzit gxvuivk vsq.  
Vprg wllt z vezs oord flb ur,  
Vpro duv viz vivsg sxrsd ul,  
Vpzmh z vpro wvzvs vy ghfn vs,  
Vpziv z vpro gpxvm,  
Nzvy z vpro gpxzy,  
Nzviy z vpro wvwrh,  
Gzy z vpro wtorzg,  
Gzx v vpro wvglu wmx.

EPITAPH ON A PUNSTER.

I lie here if I lie not,  
If I lie here, I cannot lie.

The following was among the toasts at a cattle-show in Massachusetts:

“The good old Bean Porridge days of our country: When temperance starved the Doctor, fair dealing the Lawyer, and moral honesty killed the Parson's Devil.”

*Domestic Medicine.*—A doctor and a poet quarrelled; an indifferent person was referred to, to settle the dispute; the latter made the following reply:

“Your faulty both—do penance for your crimes:  
Bard, take his physic—doctor, read his rhymes.”

SCARCE ARTICLES.

Sincerity, in patriotism.  
Honour, among attorneys.  
Friendship, without interest.  
Love, without deceit.  
Charity, without ostentation.  
Honesty, in parish officers.  
Fair Play, among gamblers.  
Beauty, without pride.  
An Advocate, without a fee.  
A Parson, practising what he professes.  
A fashionable man, without soppery.  
A fashionable woman, without paint.  
A sanctified look without hypocrisy.  
A blustering man, without cowardice.  
A subaltern officer, without money.  
Opposition, without sinister views.  
Administration, inattentive to private interest.

SIX RARE PHENOMENA.

1. A rich man content with his fortune.
2. A man distinguished by genius, and not also distinguished by defects.
3. A courtier grown old. [self.]
4. A learned man who knows him.
5. A sciolist not puffed up with the vanity of learning.
6. A virgin who is beautiful to every one but herself.

*Good Day and Martin as need be.*—To one pound of ivory black in which has been mixed half an ounce of vitriol and an ounce of sweet oil, add one pound of pulverized sugar; mix the whole with a gallon of vinegar, and let it stand three days, when it is fit for use. It should be stirred often, and kept from the air to prevent evaporation.

COUNTING-HOUSE  
**CALENDAR,**  
 FOR THE YEAR  
**1834.**

	Sunday.....	Monday.....	Tuesday.....	Wednesday.....	Thursday.....	Friday.....	Saturday.....		Sunday.....	Monday.....	Tuesday.....	Wednesday.....	Thursday.....	Friday.....	Saturday.....	
<b>JAN.</b>				1	2	3	4	<b>JULY.</b>	6	7	8	9	10	11	12	
	5	6	7	8	9	10	11		13	14	15	16	17	18	19	
	12	13	14	15	16	17	18		20	21	22	23	24	25	26	
	19	20	21	22	23	24	25		27	28	29	30	31			
<b>FEB.</b>							1	<b>AUG.</b>							1	2
	2	3	4	5	6	7	8		3	4	5	6	7	8	9	
	9	10	11	12	13	14	15		10	11	12	13	14	15	16	
	16	17	18	19	20	21	22		17	18	19	20	21	22	23	
	23	24	25	26	27	28			24	25	26	27	28	29	30	
<b>MARCH.</b>							1	<b>SEPT.</b>	31							
	2	3	4	5	6	7	8		1	2	3	4	5	6		
	9	10	11	12	13	14	15		7	8	9	10	11	12	13	
	16	17	18	19	20	21	22		14	15	16	17	18	19	20	
	23	24	25	26	27	28	29		21	22	23	24	25	26	27	
	30	31							28	29	30					
<b>APRIL.</b>			1	2	3	4	5	<b>OCT.</b>				1	2	3	4	
	6	7	8	9	10	11	12		5	6	7	8	9	10	11	
	13	14	15	16	17	18	19		12	13	14	15	16	17	18	
	20	21	22	23	24	25	26		19	20	21	22	23	24	25	
	27	28	29	30					26	27	28	29	30	31		
<b>MAY.</b>				1	2	3		<b>Nov.</b>							1	
	4	5	6	7	8	9	10		2	3	4	5	6	7	8	
	11	12	13	14	15	16	17		9	10	11	12	13	14	15	
	18	19	20	21	22	23	24		16	17	18	19	20	21	22	
	25	26	27	28	29	30	31		23	24	25	26	27	28	29	
<b>JUNE.</b>		1	2	3	4	5	6	7	30							
	8	9	10	11	12	13	14		<b>Dec.</b>	1	2	3	4	5	6	
	15	16	17	18	19	20	21			7	8	9	10	11	12	13
	22	23	24	25	26	27	28			14	15	16	17	18	19	20
	29	30								21	22	23	24	25	26	27
										28	29	30	31			

Handwritten text in a narrow column on the left edge of the page, possibly bleed-through from the reverse side. The text is written in a cursive script and is mostly illegible due to the narrowness of the column and the quality of the scan. Some characters are visible, including what appears to be a large initial letter at the top and bottom.

