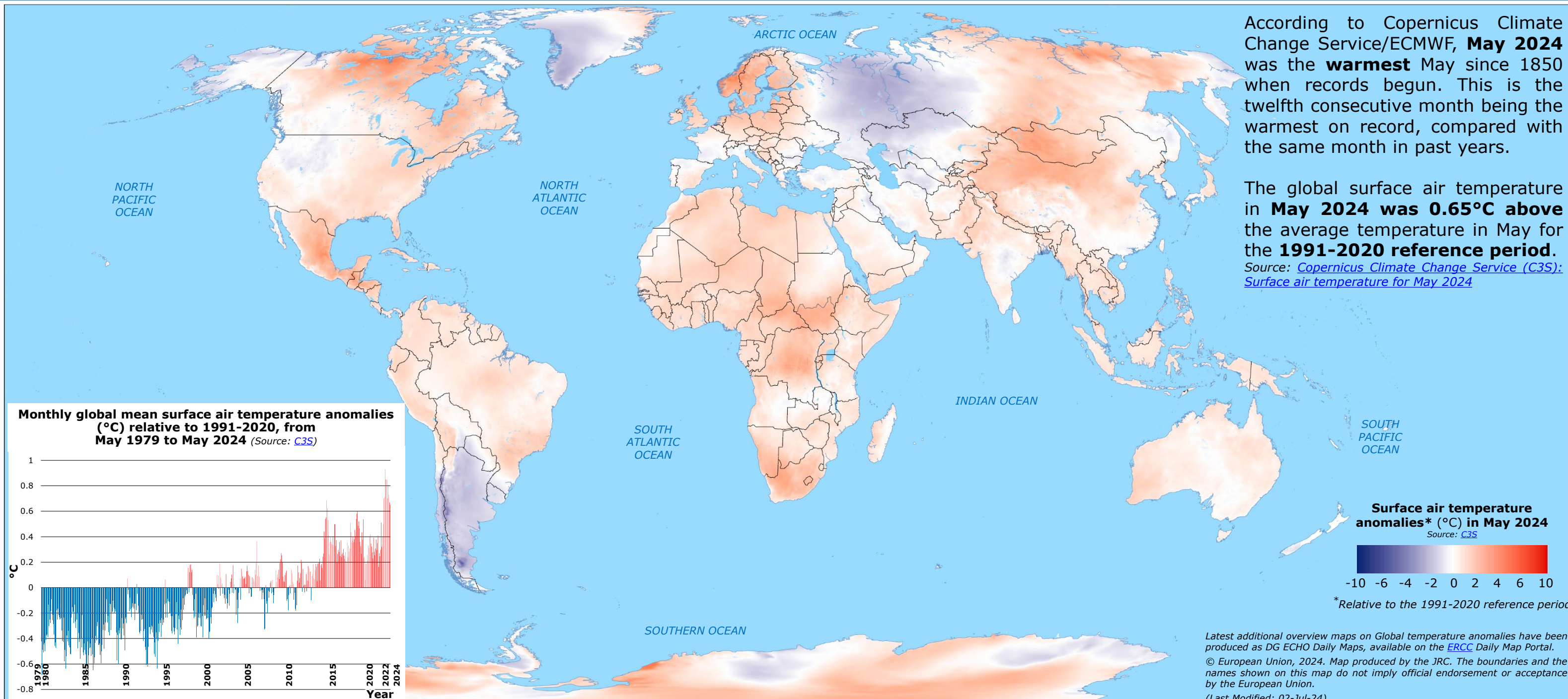


World | Temperature anomalies in May 2024

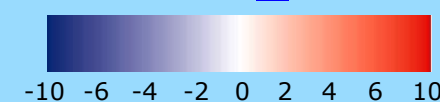
According to Copernicus Climate Change Service/ECMWF, **May 2024** was the **warmest** May since 1850 when records began. This is the twelfth consecutive month being the warmest on record, compared with the same month in past years.

The global surface air temperature in **May 2024** was **0.65°C above** the average temperature in May for the **1991-2020 reference period**.

Source: [Copernicus Climate Change Service \(C3S\): Surface air temperature for May 2024](#)



Surface air temperature anomalies* (°C) in May 2024
Source: C3S



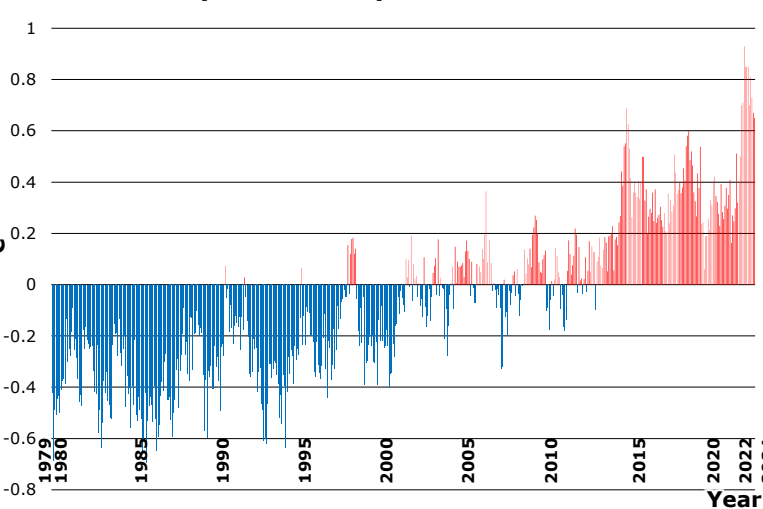
*Relative to the 1991-2020 reference period

Latest additional overview maps on Global temperature anomalies have been produced as DG ECHO Daily Maps, available on the [ERCC Daily Map Portal](#).

© European Union, 2024. Map produced by the JRC. The boundaries and the names shown on this map do not imply official endorsement or acceptance by the European Union.

(Last Modified: 02-Jul-24)

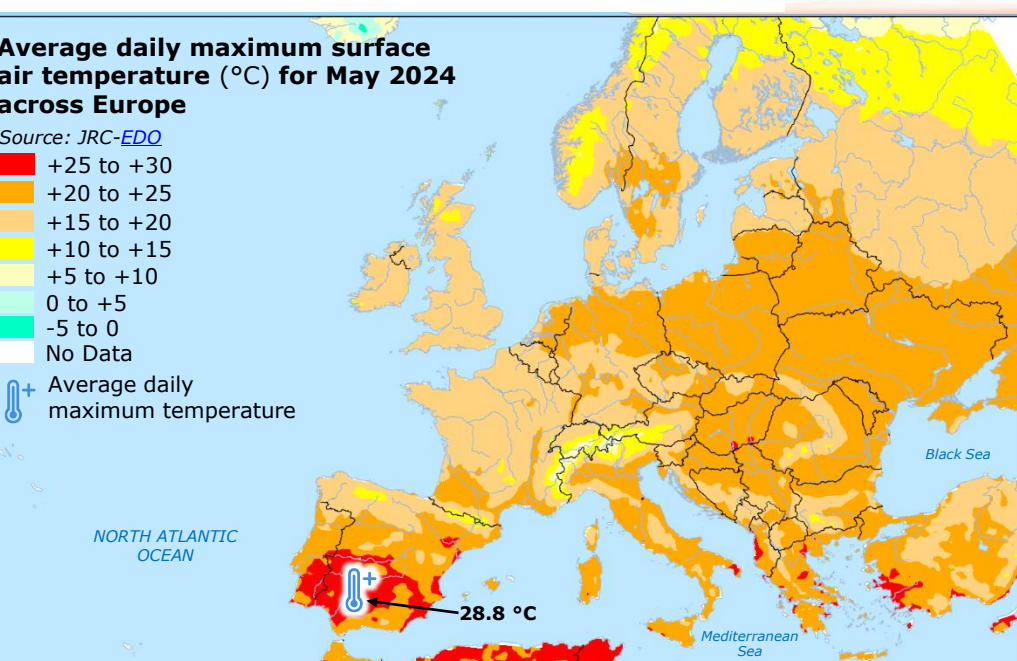
Monthly global mean surface air temperature anomalies (°C) relative to 1991-2020, from May 1979 to May 2024 (Source: C3S)



Average daily maximum surface air temperature (°C) for May 2024 across Europe

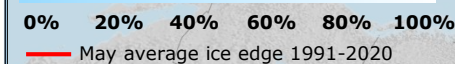
Source: JRC-EDO

- +25 to +30
- +20 to +25
- +15 to +20
- +10 to +15
- +5 to +10
- 0 to +5
- -5 to 0
- No Data
- + Average daily maximum temperature



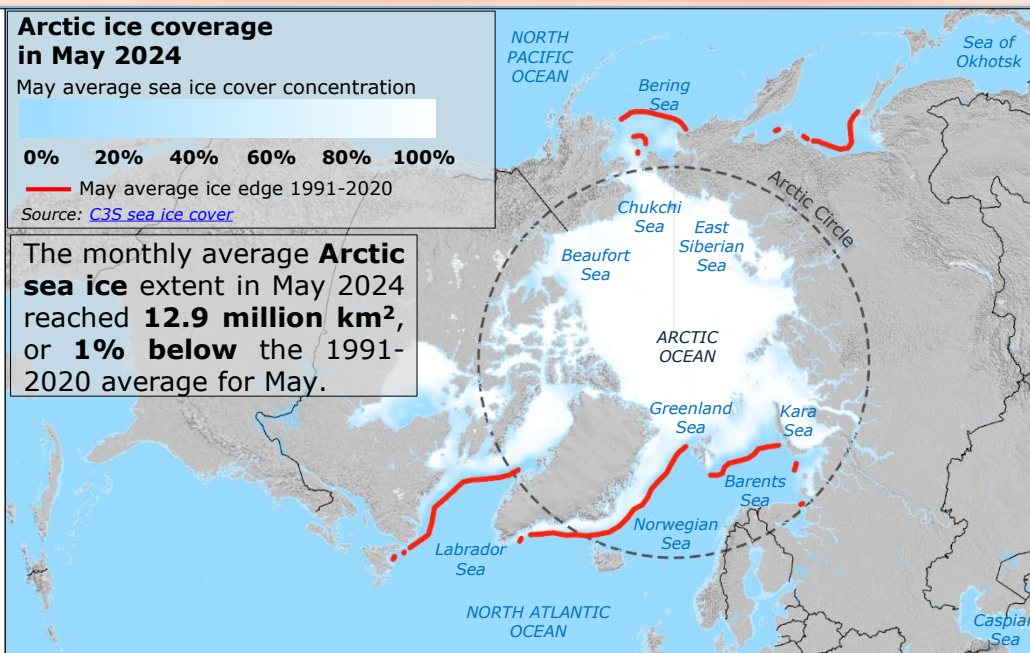
Arctic ice coverage in May 2024

May average sea ice cover concentration



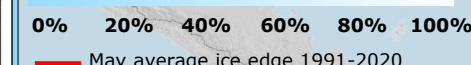
Source: C3S sea ice cover

The monthly average **Arctic sea ice** extent in May 2024 reached **12.9 million km²**, or **1% below** the 1991-2020 average for May.



Antarctic ice coverage in May 2024

May average sea ice cover concentration



Source: C3S sea ice cover

■ Ice shelf in Antarctica

In May 2024, the **Antarctic sea ice** extent reached **9.7 million km²**, or **8% below** the 1991-2020 average for May.

