

Historic, Archive Document

Do not assume content reflects current scientific knowledge, policies, or practice

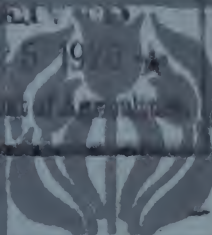
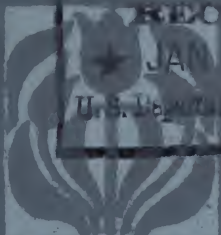
6257

LIBRARY

RECEIVED

JAN 25 1925

U. S. Department of Agriculture



THE BLUE BOOK OF BULBS 1925

CHESTER JAY HUNT INC.
LITTLE FALLS NEW JERSEY



For Spring is lavish with her beauty during Tulip-time at Mayfair

THE BLUE BOOK OF BULBS 1925



CHESTER JAY HUNT^{INC.}
LITTLE FALLS NEW JERSEY

As the subject matter and the
descriptions contained in
The Blue Book have
been used in other catalogues,
attention is called to the fact
that the contents are protected
by copyright, and that the use of
any part of the same constitutes
an infringement thereof.



PREFACE

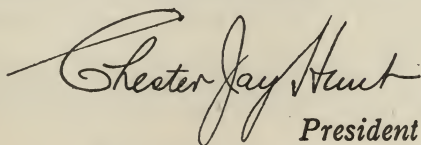
FOR every new issue of our Blue Book I find a great many things of interest to make up the text of the page allotted to me for my own personal greeting to our gardening friends. Here at Mayfair much goes on that only visitors to our gardens can know of; it is my yearly task to tell about the one or two things that most concern our customers.

This year the item of greatest import is the building of our new offices. Our old quarters have become so cramped that to take care of our increasing business we have more than doubled our former office space. I like to think of Mayfair as the ideal place for serving those who need the Spring bulbs to make their gardens happy, and I am sure that our new buildings will enable us to do just this in a far better way than our best of only a year ago.

I hope I shall often be asked this May to show my friends that it is not only the glory of our gardens that helps us to serve them well, but that the purely utilitarian side of our equipment is also of marked benefit to them. I want every one to remember that the latch-string always hangs outside.

Last of all, we must consider what our gardens will be without Holland's good Daffodil bulbs. Quarantine No. 37 is a blow from which American Horticulture will not soon recover, and I feel that it is every gardener's duty to be active in the effort to lessen its effects.

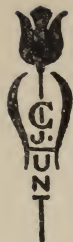
*From Mayfair
April 9th, 1925*



Chester Jay Hunt

President

CHESTER JAY HUNT, INC.



Cream Quality

To sell the best bulbs produced in Holland and to describe them fully and accurately, has been our business policy ever since our first catalogue was dropped in the mail box. The many compliments we constantly receive about our catalogue justify us, we believe, in calling it *The Blue Book of Bulbs*, while the increasing number of our satisfied customers is still our warrant for printing *The Cream of Holland* on our bag labels.

Strict adherence to this policy, combined with Mr. Hunt's intimate and discriminating knowledge of the spring-flowering bulbs, is responsible for the reputation we have established in this country and in Holland as the acknowledged leader in the distribution of Cream Quality bulbs and the marketing of the finer varieties.

All the bulbs we send out are the top size of the season's crop. Our growers reserve for us their choicest stocks, many of them being obtainable only in limited quantities. For this reason we must place our orders with our growers early, and our orders are generally mailed abroad during the last week in June.

Furthermore, a Cream Quality list nowadays bears little resemblance to any of the lists of a dozen years ago, for the improvement in all classes of bulbs has been so marked that a great many of the older favorites are unworthy of a place in the modern garden. This Blue Book retains only the cream of the older kinds, and adds the best of the newer sorts. In making selections from our list, then, there is no chance of being misled by attractive color descriptions into choosing varieties of which the growers have large stocks, and which are in demand solely because of their low price, without regard to quality. Many of the varieties we offer are our exclusive introductions, and will not be found in other American or foreign catalogues.

An additional advantage our list possesses is that, as we import our bulbs only to order and carry no large stocks, we are able to offer a far wider range of varieties than if we had to assume the risk of bulbs remaining unsold at the end of the season.

Our unvarying policy of shipping no orders in original packages as they arrive from Holland and of examining and repacking every bag of bulbs, ensures our customers the satisfaction



of planting bulbs that are ready to root at once and so make the necessary growth before freezing weather sets in.

The descriptions of varieties in The Blue Book will be found unusually elaborate in their detail; in every case they have been taken from flowers actually grown in our trials, except where it is stated that we give the growers' descriptions. All the illustrations are photographs of the gardens at Mayfair, or of flowers grown here and cut for this purpose. As the subject-matter and the descriptions contained in The Blue Book have been used in other catalogues, attention is called to the fact that the contents are protected by copyright, and that the use of any part of the same constitutes an infringement thereof.

The Bulb Market for 1925

The situation in Holland is marked this year by the higher prices for Hyacinths and the more common varieties of Daffodils. The great increase in the demand for all kinds of bulbs has caused the prices of Tulips to advance as well, but with the exception of the Breeders the higher costs are not so noticeable.

Hyacinths are scarce because of a growing demand on the continent and because of decreased production. We are now using the bulbs originating in the last years of the war, when all growers reduced their costs by propagating fewer bulbs.

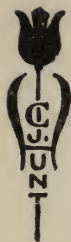
The approaching embargo on Daffodils which will take effect January 1st next is responsible for the rise in Daffodil prices. All the growers have attempted to curtail their crops somewhat so as to have a minimum quantity on their hands when the American market is closed. To date we have no sign that the embargo will not go into effect as planned and we again urge our customers to plan for whatever Daffodils they may need during the next few years, as in our opinion American grown bulbs will be very scarce and by no means of the same quality as those we have imported from Holland.

Introductions for 1925

HYACINTHS—Beauty, La Charmante, Myosotis, Thomas Willet. SINGLE EARLY TULIPS—Adelaine, Diadem, Progression, Venus. COTTAGE TULIPS—Ambrosia, Brightness, Celia, Mentor, Tangerine. DARWIN TULIPS—President Harding, Sylvia. NARCISSUS—Ambrosine, Commandant, Elizabeth Ryan, Firetail, Giraffe, Nobility, Sparkler.

Orders

As all our bulbs are imported to order, customers must send us their orders on or before June 25. We shall be glad to quote



prices on any bulbs not included in this list. No order for less than five bulbs of one variety will be entered, except where prices are quoted by the single bulb, nor can we accept orders amounting to less than \$2.50. After July 15, it is impossible for us to arrange for the cancellation of orders, as the bulbs are then about to be shipped from Holland, and it must be understood that bulbs will be shipped as ordered when they arrive from abroad, and that we require a remittance in full therefor. It is advisable in addressing mail to write New Jersey in full, as otherwise letters may go to Little Falls, New York.

Shipment

All our shipments go forward by Express or Parcel Post, except local orders to be called for on notification. We do not deliver any shipments free of charge. Shipments are insured, but we are not responsible for transportation in any respect, and our customers should not expect us to replace bulbs lost in transit. Please note that our bulbs are received from Holland in bulk and repacked for our customers. We do not approve of individual shipments direct from abroad, since the bulbs are frequently damaged by the long voyage, and Daffodils particularly are soft on arrival. We sort by hand every order, and our packers are instructed to be very careful to use only sound bulbs.

Prices

All prices quoted are for Cream Quality bulbs, and include all charges except for express or parcel-post delivery from Little Falls. The price per 1,000 will apply where not less than 250 bulbs of the same variety are ordered; the price per 100 will apply where not less than 25 bulbs of the same variety are ordered. Five bulbs or more will be sold at the ten rate. All prices are net, and subject to no discounts or commissions of any kind; bills are payable on receipt of goods. References are desired from persons unknown to us.

Note

It is impracticable, owing to contingencies of soil, climate, season or faulty planting, to give complete assurance that all bulbs we send out will flower satisfactorily. Each season we make tests of all the varieties we sell, taking bulbs out of the very bags from which our customers are supplied. It is understood that any complaint will be entertained only on the basis of the results shown in our trial-gardens. We do warrant our bulbs to be as represented, and that they are all true to name, except in the case of those varieties for which we give the grower's descriptions.



The Daffodil Meadow at Mayfair



The Gardens at Mayfair

Our spring gardens typify in the most practical manner the principles on which our whole business is based. Here we show what we are selling not as the mere promise of the brown bulbs set forth on the shop counter, but in the full fruition of the matured flower. To select for one's own garden here becomes the delightful task of choosing from an embarrassment of riches, for at Mayfair Spring awakes among meadows glorious with golden Daffodils and stays joyously contented throughout the lavish beauty of Tulip time.

A personal study of the color and habit of growth from the flowers themselves must always be the surest way to make the successful garden, and at Mayfair the opportunities for such study are unsurpassed. During the spring of 1925 we shall have in flower over four hundred varieties of Early and Late Tulips and over one hundred and fifty varieties of Daffodils. Besides this display of named sorts, there are two extensive plantings of naturalized Daffodils. We plan each season to show flowers of everything listed in *The Blue Book*; there are also many novelties and rare things which we are trying out for future use.

Best of all, each display may be seen in the ideal setting which each class requires. The Scillas and other shade-loving bulbs are used in masses in woodland or on the edges of shaded lanes; the Daffodils are at home in secluded meadows where the background of grove or hedgerow gives them the partial shade in which they revel, and provides delightful glimpses of gold and white through the feathery branches of shrubs and trees.

In the more formal gardens, the Early Tulips blaze in the spring sunlight, while the softer tones of the Darwins and Breeders show to advantage against groupings of spring-flowering shrubs. In every case the attempt is made to show the individual flower to best advantage, as well as to give a harmonious sense of color in each of the separate gardens. The benefit of this kind of actual garden setting is evident, and we would urge every one of our friends to visit the gardens as often as possible, and to use them in the way for which they are planned—as the safest kind of guide to the spring garden they are themselves making.

Dates for Visitors

In a normal season, the Daffodils should be at their best during the last of April and early in May. The Early Tulips will be in full bloom during the first week in May; the Late Tulips about mid-May.

Notice of exact dates will be given upon request. Personal appointments should be made not less than three days in



advance. Little Falls is reached by the Erie Railroad; stations at Great Notch and Little Falls are equally convenient, but more frequent service is to be had through the former station. Good service is afforded by the railroads to Paterson. From Paterson the Singac trolley or bus line brings passengers to Little Falls in about twenty minutes. The gardens are also easily reached by motor. A map showing the local roads leading to Little Falls will be mailed on application. Our telephone number is Little Falls, 138.

Color Schemes and Planting Plans

As an outgrowth of the greater knowledge and keener appreciation of gardening, both as to its objects and the materials with which the gardener works, there has spread an increasing desire to realize the gardener's own personality and ideals in the prospects he creates. Our gardens reflect ourselves, as it were, in the harmonies of color and form which they present, and the color schemes of modern landscape design are justified only in so far as they do thus express the author of them. Our beds and borders are no longer meant to exhibit the fashionable mood of a moment, but to evoke a permanent expression of the ideal surroundings among which we choose to live.

We believe no flowers can give more enjoyment as continual companions, or are better fitted to the happy spring days, than are the Daffodils and Tulips. These rightfully belong in our borders at this time, and lacking them we lack the true keynote of the spring garden.

How well they lend themselves to the purposes of a color scheme is known best by those who have so used them. Whether planted in the border in conjunction with hardy perennials, or given a situation by themselves, the bulbs can be made by wise arrangement to contribute lavishly to the beauty of the color design which the spirit of May calls forth.

To encourage the greater use of spring bulbs, in gardens where these flowers have not been thus employed, and to assist the amateur who desires to obtain harmony of tones in his planting, the accompanying lists will provide suggestions of value in working out effective color schemes.

In Hyacinths, an attractive gradation in tones of lavender and blue would shade from the pale color of Dr. Lieber, through Schotel, Perle Brillante, General van der Heyden, and Grand Maitre, to King of the Blues. If it be desired to add yellow to the planting, then Primrose Perfection, City of Haarlem and Buff Beauty should precede the blues or be mingled with them, while white might begin the scheme by using Arentine Arendsen and La Grandesse. Associated with the Hyacinths, Daffodils Evangeline, Madame de Graaff, Seagull, White Lady, Auto-



A clump of Daffodils very much at home—Autocrat
in the foreground



crat, Emperor, Empress, Frank Miles and Fairy would blend most harmoniously, if used as a background for the white, yellow and blue Hyacinths. A similar arrangement of Hyacinths, General de Wet, Lady Derby, Pink Perfection and Marconi will provide a handsome scheme in shades of pink.

In early Tulips an exquisite pink border planting can be made by using, in the order named, the following varieties: La Triomphante, Queen of the Netherlands, Rose Queen, La Riante, Ibis, Princess Wilhelmina and Queen Alexandra. Yellow and violet will combine artistically in Diana, L'Unique, Moonbeam, Goldfinch, President Lincoln, La Remarquable and Wouverman. A handsome combination of white with orange can be formed with Lady Boreel, Queen of the Whites, Jaune Aplat, Leopold II, Cardinal Rampollo, Golden Lion and Duchesse de Parme.

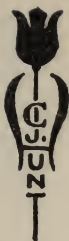
Cottage Tulips, Vitellina, Solferina, Fulgens lutea pallida, Fulgens lutea maxima, Fairy Queen, Ilias and Twilight give a very beautiful scheme in yellow and violet. Picotee, The Fawn, Mrs. Kerrell, John Ruskin, Inglescombe Pink and Sir Harry shade through pink and deep rose most effectively.

Darwin Tulip combinations formed as below will prove decidedly beautiful, especially if situated in partial shade: Pink and red—Flamingo, Baronne de la Tonnaye, Edmee, Galatea, Mattia, Mr. Farncombe Sanders, Professor Francis Darwin, Whistler, William Pitt and Eclipse; purple and lavender—Mauve Clair, Le Mogol, Euterpe, Bleu Aimable, Ronald Gunn, Pensee Amere, Marconi, Viking, Jubilee and Gryphus; pink and cerise—Sanchia, Suzon, Clara Butt, George Maw, Princess Elizabeth, Nauticus and Louise de la Valliere. The soft colors of the Breeder Tulips will appear to advantage in the following arrangement of brown and purple—Mr. Groene-wegen, Plutarchus, Lord Cochrane, Apricot, Jules Favre, Dom Pedro, Paladin, St. James, Louis XIV, Godet Parfait, Vertumnus, Moody, Salomon and Garibaldi.

A very beautiful blending of soft tones may be developed in a long border planting to include in the order given these Tulips; Miss Willmott, Jaune d'Oeuf, Gudin, Reverend Ewbank Euterpe, Melicette, Viking, Zulu, Louis XIV, Copernicus, Yellow Perfection, Bronze Queen, Massachusetts, La Fiancee, Aphrodite, May Queen and Queen Mary.

Spring-Flowering Bulbs for Fall Planting

No class of plants provides more useful material for the garden than do the spring-flowering bulbs. In the first place, they bloom at a time when the long winter has grown to be most irksome without the comforting beauty of the garden; then again, the requirements for success are few and simple,



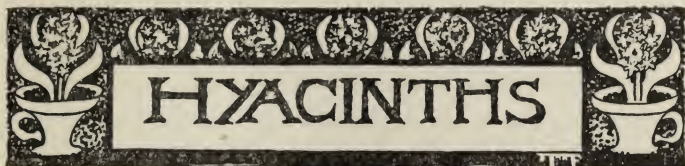
and one may be almost positive of satisfactory results. All these good points make them a most welcome addition to the comparatively limited number of herbaceous plants which the enthusiast may use to ensure a successful beginning of the gardening year.

In beds or borders, in sheltered nooks among shrubbery, or in broad, irregular patches on the edges of woodland, the bulbs afford a profusion of bloom from earliest spring until well into June.

Success with most bulbous plants is principally a question of providing suitable conditions for the development of the flower, which has been formed in the bulb during the previous growing season. If a Tulip bulb, for instance, be cut open at planting time, the tiny flower will be found perfectly formed within the protecting scales of the bulb. To insure the May blossom, it is necessary only to perform properly the autumn planting. Our leaflet containing cultural directions is delivered to our customers when the bulbs are forwarded.

In this list, the figures following the variety names indicate the relative time of flowering of any given variety as compared with others in the same class. Of the Tulips the single early varieties are the first to bloom, followed closely by the double sorts. Generally speaking, the Cottage Tulips come into flower next, and the earlier Darwins and Breeders along with them; while the Bybloems, Bizarres and Parrots are in flower together with the later Darwins and Breeders.





In the use of Hyacinths for bedding, a careful selection must be made in order to secure varieties suitable for this purpose. The stems of many sorts are not stout enough to hold up the heavy trusses, and the flowers are quickly spoiled when they begin to droop over upon the ground. Very brilliant colors, such as exist among the tulips, are lacking. For certain effects of pale colors in large breadths of one shade, or for contrasting combinations, they are very beautiful, if sorts are chosen which have the strength of stem to support the great spikes. When Hyacinths are grown under glass, or in the house, the colors are frequently much finer, and the spikes of weak-stemmed kinds may be supported in an inconspicuous manner.

The bulbs of different varieties of Hyacinths vary greatly in size, some making a very large bulb and others a small one. Our customers need never feel any disappointment when comparing the enormous bulb of Grand Maitre with the smaller one of Roi des Belges, for instance, for all our bulbs are of selected size. Detailed planting directions are included with the shipment of the bulbs.

The figure following each name indicates the relative time of flowering of that variety. An asterisk () preceding the name indicates that smaller sizes can be supplied, as noted on page 14.*

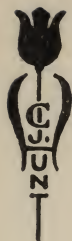
Prices of all varieties, 10 bulbs, \$2.20; 100 bulbs, \$20.00

ARENTE ARENSEN. 1. Pure snowy white; open, wide-petaled bells, and narrow, well-filled spike. An extra-fine variety.

BEAUTY. 2. Clear rose-pink; very full spike of large bells giving the effect of double flowers.

*BUFF BEAUTY. 2. Pale Naples yellow, striped dark straw-yellow, with flush of rosy flesh on back of bells. Long, narrow truss, with good bells and stem. Fine for pot culture or bedding.

CITY OF HAARLEM. 3. Soft Naples yellow, shaded deeper; large, well-formed truss and good stem. One of the best of the yellows.



- CORREGGIO. 2. A magnificent, pure white variety, with large, fleshy bells of wonderful substance, and perfect truss of great size. Unexcelled for pot culture.
- *CZAR PETER. 2. Light lavender-blue; splendid spike, with large, waxy bells. An old variety, but one of the finest.
- DAYLIGHT. 2. Primrose-yellow, heavily flushed salmon-rose; loosely built spike, with rounded top and large bells. A fine bedding sort.
- DR. LIEBER. 2. Pale lavender-blue, with faint tinge of dark violet; large spike, well filled out. A handsome variety for bedding, and a very early forcer.
- ETNA. 5. Bright, dark rose; very large, full truss, with large bells. A very bright Hyacinth, and unexcelled for pot culture. The latest Hyacinth to flower.
- *GARIBALDI. 1. Deep crimson-red, with a splendid, large spike. The best red for early forcing.
- *GENERAL DE WET. 2. Soft light pink; a fine spike with large bells. A pink Grand Maitre. Very fine for pots or bedding.
- GENERAL VAN DER HEYDEN. 1. Dark grayish lavender, with mauve shading; large bells, compactly arranged on large spike. A distinct color.
- *GRAND MAITRE. 2. Dark lavender-blue; large bells, and very long, well-filled truss, on an unusually strong stem. Equally good forcer and bedding variety, usually throwing a number of secondary spikes.
- HEIN ROOZEN. 1. Snowy white; splendid big bells, and long, loose spike of great elegance. A superb early sort for forcing, and the best white for the border.
- IVANHOE. 4. Dark indigo-blue, shaded black, with white center; long, narrow spike, with bells closely set.
- JACQUES. 3. Very pale pink; enormous truss, with large bells set rather loosely along the stem. Fine for bedding.
- KING ALFRED. 3. Lavender-blue, striped and suffused bright steel-blue; rather loose spike, well finished, with good bells and dark stem. A splendid flower of very bright color.
- *KING OF THE BLUES. 4. Bright dark blue; splendid spike and bells. Excellent for late forcing or for bedding.
- LA CHARMANTE. 1. Lavender-blue, shaded greyish violet; large bells and throwing many spikes. A beautiful early variety.



- *LADY DERBY. 1. Clear rose-pink; splendid spike with large bells. A splendid forcing variety and unexcelled for bedding, because its strong stem holds the truss erect to the end. The finest of all the rose-pink Hyacinths.
- *LA GRANDESSE. 3. Pure white; long, full spike of perfect form, with waxy bells. Splendid for bedding or late forcing.
- LA VICTOIRE. 1. Bright, glistening, carmine-rose; under glass the color is a fine dark pink; long, well-filled spike of medium-sized bells. Brilliant bedding sort, having a strong stem and lasting color.
- *L'INNOCENCE. 1. Pure white; fine truss, with large bells of great substance. A fine Hyacinth for pots or bedding.
- *LORD BALFOUR. 1. Lilac-rose, tinged dark violet; distinct color; long spike and large bells. The best Hyacinth of this color; well suited for planting with the yellow shades.
- LORD DERBY. 3. Silvery lavender-blue; large, compact spike of great beauty, with small bells. A good outdoor variety.
- MARCONI. 2. Bright, deep rose, flushed white; a full spike of fine form, carried on a stout stem. A slightly deeper shade than Lady Derby. Splendid for any outdoor purpose.
- MENELIK. 2. Deep black-blue; large and well-formed truss with bells of good size. The best of the so-called "blacks."
- MYOSOTIS. 2. Pale blue, shaded soft violet; loosely built spike with good-sized bells of lovely color.
- ORANJEBOVEN. 3. Pale salmon-flesh, tinged bright rose; medium spike; a distinct variety because of its unique color. Especially beautiful in pots. Never makes a large bulb.
- PERLE BRILLANTE. 2. Light blue, tinged lavender; big bells on a large, finely formed, stiff spike. Superb for bedding or pots.
- PINK PERFECTION. 2. Soft mauve-rose; long, graceful spike with large bells. Splendid for pots or bedding.
- PRIMROSE PERFECTION. 3. Soft primrose-yellow; medium spike, but the largest bells among the yellow sorts. A strong stem for bedding.
- *QUEEN OF THE BLUES. 3. Beautiful light porcelain-blue, of a very clear color; large, compact spike with bells of medium size. A strong stem for bedding.
- QUEEN OF THE PINKS. 3. Very bright rose-pink of unusually clear tone; large spike with large bells. A sport of King of the Blues.
- *SCHOTEL. 1. Soft light blue; very long and perfect truss, with large bells. Very easily forced, and splendid for bedding.



THOMAS WILLET. 2. Grayish white with pale violet shading; large bells with narrow petals. A good pale tone to plant either with pink or blue Hyacinths.

*YELLOW HAMMER. 1. Creamy yellow; fine compact spike and large bells. The best standard yellow for pot culture.

Miniature or Dutch-Roman Hyacinths

The Miniature Hyacinths are unusually handsome for growing in pots. They come into flower earlier, and the bells are more graceful. Miniature Hyacinths will be furnished in any variety of the preceding list marked with an asterisk, at 30 per cent less than the prices quoted for Cream Quality bulbs.

Roman Hyacinths

Roman Hyacinths are invaluable for early forcing. The spikes and bells are smaller than other Hyacinths, but are far more graceful.

WHITE ROMANS. Extra-large Cream Quality bulbs. 10 bulbs \$2; 100 bulbs, \$18; 1,000 bulbs, \$160.





Beds of Early Tulips



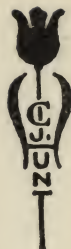
FOR bright spring color we recommend Duchesse de Parme as a showy yet most refined flower for massing or bedding. Order this from us in quantities of not less than 250 bulbs at \$60 per 1,000.

There is no red early tulip to equal Sir Thomas Lipton for its rich color when used in masses. Order this from us in quantities of not less than 250 bulbs at \$70 per 1,000.

Our favorite pink Tulip for bedding because of its many fine qualities is La Riante. Order this from us in quantities of not less than 250 bulbs at \$55 per 1,000.



In the Early Tulip Garden



TULIPS

Single Early Tulips

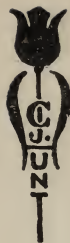
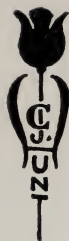
It is strange that the Single Early Tulips are not used as freely as they should be by the amateur of tulips. In them we have colors not duplicated in any other class, while the tones are always of a more brilliant character than those found in the Late Tulips. Perhaps it is because the more garish reds and yellows are most frequently seen that the truly beautiful things in this class are not properly known; we can assure our customers that some very delightful surprises are in store for those who choose wisely from our Blue Book list. They are the best suited of all the Tulips for solid masses of color in beds which are to be planted in annuals later on, as they are through flowering early enough to be removed in time for the plants to make an effective display early in the summer.

The newer varieties so far excel many of the older sorts as to make the latter hardly worth planting. Beds of these newer Single Early Tulips planted in solid colors or in effective combinations provide a glorious sight late in April and early in May. In borders where they are not hidden by rank-growing plants they give a touch of color wholly welcome at this early time of year. They are the best fitted of all Tulips for forcing, and, if not grown too cool, some very early varieties may be had in flower by the end of December. When used for bedding, it is far better that new bulbs be secured each year, for the old bulbs will not do well the second season unless they have been allowed to mature and the foliage to die down before being removed from the beds. Even with the best care, it is uncertain whether the bulbs will again bloom successfully during a second season.

In the following list the handsomest sorts alone are represented, while many of the better-known varieties are omitted because they no longer grow well, or are surpassed by the newer kinds. Detailed planting directions are included with the shipment of the bulbs.

The figure following the name indicates the relative time of flowering.

ADELAINE. 2. Self-colored cherry-red; medium sized flower of distinct shape; in color something like Proserpine but low growing and, therefore, well suited for bedding. Height 12 in. 10 bulbs, 60 cts.; 100 bulbs, \$5.



ADMIRAL REINIER. 2. White ground, striped and feathered carmine-rose, with yellow base; long, large flower of handsome form. Excellent for bedding. Height 12 in. 10 bulbs, 75 cts.; 100 bulbs, \$6.50.

APOLLO. 1. Dull blood-red, changing with age to dull claret-red, edged amber-brown; very large flower with greenish base; quite distinct and having something of the Breeder quality of color. Height 14 in. 10 bulbs, \$1; 100 bulbs, \$8.

AURORA. 2. Pale straw-yellow, with very faint flush of rose as the flower ages; large, long bloom of beautiful shape. A Tulip of dainty color for combining with rose and pale-yellow kinds. Height 13 in. 10 bulbs, \$2.40; 100 bulbs, \$22.

CARDINAL RAMPOLLO. 1. Clear yellow, bordered bright orange-red; a good-sized flower of very showy character. Forces very easily. Height 11 in. 10 bulbs, \$1; 100 bulbs, \$8.50.

CHRYSOLORA. 2. Clear golden yellow; large, globular flower. A splendid Tulip for beds. Height 12 in. 10 bulbs, 60 cts.; 100 bulbs, \$5; 1,000 bulbs, \$45.

COTTAGE BOY. 2. Canary-yellow, edged light orange-red; medium-sized flowers of good form. A fine variety for bedding or midseason forcing. Height 12 in. 10 bulbs, 60 cts.; 100 bulbs, \$5; 1,000 bulbs, \$45.

COTTAGE MAID. 3. Creamy white, with broad margin of rose-pink. Rounded flower, of value for bedding. Height 12 in. 10 bulbs, 65 cts.; 100 bulbs, \$5.50; 1,000 bulbs, \$50.

CRAMOISI BRILLANT; syn., CARMINE BRILLIANT; SPARKLER. 4. Glowing scarlet, with yellow base; long, narrow flower of perfect form. Extra fine for bedding. Height 13 in. 10 bulbs, 60 cts.; 100 bulbs, \$5; 1,000 bulbs, \$45.

CRIMSON KING. 2. Crimson-scarlet, with yellow base; sweet-scented. A good bedding Tulip because of its dazzling color, and good for late forcing. Height 14 in. 10 bulbs, 55 cts.; 100 bulbs, \$4.50; 1,000 bulbs, \$40.

CRIMSON QUEEN. 2. Cherry-red, slightly paler at edges with age; medium-sized flower. Being a sport of La Reine, it is unexcelled for forcing. Height 12 in. 10 bulbs, 75 cts.; 100 bulbs, \$6.50.

CULLINAN. 2. Creamy white, with edge of very pale rose. A large flower, in color between La Reine Maximus and Flamingo. Very beautiful outdoors and extra fine for forcing. Height 13 in. 10 bulbs, \$1.10; 100 bulbs, \$9.50.

DE WET. 3. Golden yellow, flushed and stippled deep orange; large, sweet-scented flower of erect habit. A new Tulip of a color unlike any other variety, well adapted for forcing or bedding. Height 17 in. 10 bulbs, \$1.80; 100 bulbs, \$16.



DIADEM. 1. Opening pale soft old rose, changing to salmon-pink, shaded pale rose as the flower ages; inside deeper with white base, starred yellow. A large flower and an unusual color in Early Tulips, having a decided salmon tone. Height 15 in. Single bulb, \$1; 10 bulbs, \$8.

DIANA. 3. Pure glistening white, with yellow base; long flower of handsome shape. A fine new Tulip which grows more and more beautiful as it ages. Height 14 in. 10 bulbs, 65 cts.; 100 bulbs, \$5.50; 1,000 bulbs, \$50.

DRAPEAU ROUGE. 2. Bright cerise-red; tall flower of medium size and sturdy habit. A fine variety for borders. Height 15 in. 10 bulbs, \$1; 100 bulbs, \$9.

DUCHESS DE PARME. 2. Deep orange-scarlet, with an irregular border of deep orange-yellow; very large, globular flower. Showy bedding Tulip, and a fine early forcer. Height 13 in. 10 bulbs, 75 cts.; 100 bulbs, \$6.50; 1,000 bulbs, \$60.

DUKE OF ALBANY. 1. Bright rose, edged rosy pink, with broad white stripe through outer petals and white base; large, cup-shaped flower of a very soft and beautiful color for outdoors. Height 14 in. 10 bulbs, 85 cts.; 100 bulbs, \$7.50.

DUSART. 2. Deep crimson; large flower of fine form. A good variety for bedding. Height 14 in. 10 bulbs, 60 cts.; 100 bulbs, \$5; 1,000 bulbs, \$45.

ELEANORA; syn., LAC ELEANORA. 3. Purple-violet; medium-sized flower of showy character. A handsome bedding Tulip. Height 14 in. 10 bulbs, 60 cts.; 100 bulbs, \$5.

ENCHANTRESS. 3. Salmon-red, with broad, creamy white border; inside fiery salmon-red, with pale buff-yellow edge and yellow base. A showy flower quite unlike any other Tulip. Height 10 in. 10 bulbs, 85 cts.; 100 bulbs, \$7.50.

FABIOLA; syn., GRAND DUC DE RUSSIE; JACHT VAN ROTTERDAM. 2. Rosy violet, striped white; large, full flower; very showy, and the best of the violet-striped Tulips. Fine for bedding or forcing. Height 12 in. 10 bulbs, 65 cts.; 100 bulbs, \$5.50.

FLAMINGO; syn., CARNATION. 2. Carmine-rose, shaded lighter, with white stripe through petals; large, crinkled flower of beautiful shape. A dark pink sport of White Hawk. Splendid either for forcing or bedding. Height 13 in. 10 bulbs, 85 cts.; 100 bulbs, \$7.50.

GLOBE DE RIGAUD. 2. Dark violet, lightly feathered purple and white; large flowers. A very fine, dark variety for beds or borders, and good for forcing if not used too early. Height 12 in. 10 bulbs, \$1; 100 bulbs, \$8.



- GOLDEN LION**; syn., **GOLDEN LION OF HILLEGOM**. 2. Deep primrose-yellow, edged fire-red; broad, orange-red margin inside. Large flower of globular form, on stiff stem. A very handsome bedding Tulip. Height 13 in. 10 bulbs, 80 cts.; 100 bulbs, \$7.
- GOLDEN QUEEN**. 2. Golden yellow; large flower of extra-fine form. An early forcer. Height 14 in. 10 bulbs, 60 cts.; 100 bulbs, \$5; 1,000 bulbs, \$45.
- GOLDFINCH**. 2. Clear chrome-yellow, retaining the color until the petals drop; large flower. One of the best for bedding, and fine for early or late forcing. This is the pure yellow Yellow Prince, and its equal in all respects. Height 12 in. 10 bulbs, 65 cts.; 100 bulbs, \$5.50; 1,000 bulbs, \$50.
- HECTOR**. 3. Dull orange-red, with narrow edge of light yellow; large, bold flower having a distinct lemon perfume. Height 12 in. 10 bulbs, \$1; 100 bulbs, \$8.
- IBIS**. 2. Carmine-rose and white, with yellow base. A larger, finer Flamingo with more brilliant coloring; magnificent outdoors or forced. Height 14 in. 10 bulbs, \$1.30; 100 bulbs, \$11.
- JAUNE APLATI**. 3. Sulphur-yellow, flushed pale rose; a short, flattened flower, not very large, but a very refined color resembling Double Tulip Safrano in color. Height 11 in. 10 bulbs, 85 cts.; 100 bulbs, \$7.50.
- JEANNETTE**. 2. Claret-red, edged deep old-rose; good-sized flower. This is a fine sport of Cottage Maid and very effective planted in masses. Height 12 in. 10 bulbs, 60 cts.; 100 bulbs, \$5.; 1,000 bulbs, \$46.
- JENNY**. 2. Silky carmine-rose, with faint white flush through middle of petals; white base starred yellow. A Tulip that should be better known for outdoor planting. Height 12 in. 10 bulbs, 80 cts.; 100 bulbs, \$7.
- JOOST VAN VONDEL**. 2. Dark cherry-red, irregularly striped and flaked white, with white base; long, large flower of exquisite shape. A superb variety for bedding. Height 14 in. 10 bulbs, 60 cts.; 100 bulbs, \$5; 1,000 bulbs, \$45.
- KEIZERKROON**; syn., **GRAND DUC**. 1. Bright crimson-scarlet, edged clear, rich yellow; fine, large flower on long stem. A fine bedding variety, and splendid for early or late forcing. Height 16 in. 10 bulbs, \$1; 100 bulbs, \$8.
- KOHINOOR**. 3. Deep velvety crimson, with purplish bloom; the darkest red Tulip; medium-sized flower, on dark stem. A superb bedding variety. Height 12 in. 10 bulbs, \$1; 100 bulbs, \$8.



So That You Will Appreciate the
Early Tulips



WE DO not want you to go on supposing all Early Tulips are red and yellow. The selection given below will provide your garden with some colors which cannot be found in the Late Tulips.

Order Recommendation AA

Ten bulbs of each of these ten varieties for \$11.85

AURORA	MAX HAVELAAR
DIANA	PINK BEAUTY
GOLDEN LION	PROGRESSION
LA RIANTE	QUEEN ALEXANDRA
L'UNIQUE	RISING SUN



1—La Riente

2—La Triomphante

3—Queen Alexandra

4—Leopold II



- LADY BOREEL; syn., JOOST VAN VONDEL WHITE. 2. Snowy white; large, long flower of perfect shape. The finest white for bedding, and superb for pots if not forced too early. This and White Hawk are the gems among the lower-priced white Tulips. Height 14 in. 10 bulbs, 70 cts.; 100 bulbs, \$6; 1,000 bulbs, \$55.
- LA REINE MAXIMUS. 2. White, faintly flushed pale rose, color deepening with age. A fine bedding Tulip, and splendid forcer. An extra handsome, large-flowered La Reine. Height 13 in. 10 bulbs, 80 cts.; 100 bulbs, \$7.
- LA REMARQUABLE. 3. Dark claret-red, edged and tipped old-rose; large flower of beautiful reflexing form. An exquisite flower, fine for bedding or midseason forcing. Height 13 in. 10 bulbs, 70 cts.; 100 bulbs, \$6; 1,000 bulbs, \$55.
- LA RIANTE. 2. Bright rosy pink, tipped with white; large flower of great beauty. We recommend this variety for bedding instead of Cottage Maid. Height 12 in. 10 bulbs, 70 cts.; 100 bulbs, \$6; 1,000 bulbs, \$55. See illustration.
- LA TRIOMPHANTE. 2. White, with faint edge of palest rose, deepening slightly with age. A flower of most delicate beauty and exquisite shape. Height 15 in. 10 bulbs, 70 cts.; 100 bulbs, \$6.
- LE MATELAS. 2. Glistening pink, tipped and flushed creamy white, with yellow base. Medium-sized flower of beautiful form. One of the finest pinks for early forcing. Height 12 in. 10 bulbs, 80 cts.; 100 bulbs, \$7.
- LEOPOLD II. 2. Creamy yellow with band of orange-scarlet and narrow rim of deep yellow. A distinct and very refined flower of good size. Height 12 in. 10 bulbs, 85 cts.; 100 bulbs, \$7.50. See illustration.
- L'ESPERANCE. 2. Dark garnet with purple bloom, edged very pale old-rose; a rather new Tulip of sturdy habit and unusual color. Combines well with the purple and claret shades. Height 14 in. 10 bulbs, 70 cts.; 100 bulbs, \$6.
- LITTLE DORRIT. 2. Primrose yellow with heavy margin of ruddy orange, deepening with age; a very large flower of very clear color. Height 14 in. 10 bulbs, 70 cts.; 100 bulbs, \$6.
- L'UNIQUE; syn., BRUNHILDE. 2. White, striped cream-yellow; large flower of full, round form. A very distinct and handsome Tulip for bedding, and good for late forcing. Height 14 in. 10 bulbs, \$1.00; 100 bulbs, \$8.
- MAX HAVELAAR. 2. Blood-orange, flushed salmon-rose; the general tone is close to a watermelon-red; large, well-formed flower; something like La Merveille among the Cottage sorts. A fine bedding and unusually handsome forcing Tulip. Height 12 in. 10 bulbs, \$1.20; 100 bulbs, \$10.



MON TRESOR. 1. Rich, deep yellow; very long, large flower of handsome shape. One of the best yellow bedding Tulips, and fine for early forcing. Height 13 in. 10 bulbs, 80 cts.; 100 bulbs, \$7; 1,000 bulbs, \$65.

MOONBEAM. 2. Deep primrose-yellow, shading to soft canary at edges; very large flower of graceful, open form. A splendid new variety which is a marked improvement over Primrose Queen. Height 14 in. 10 bulbs, \$1.20; 100 bulbs, \$10.

OPHIR D'OR. 2. Bright clear yellow; large flower. A fine Tulip for bedding, coming into flower a little later than Mon Tresor. Height 13 in. 10 bulbs, 70 cts.; 100 bulbs, \$6; 1,000 bulbs, \$55.

PINK BEAUTY. 3. Opening white with narrow edge of soft pink, with age becoming vivid cherry-rose; white base starred yellow. Enormous flower of superb shape, carried on stiff, strong stem. The handsomest dark pink bedding Tulip, and a fine late forcer. Height 12 in. 10 bulbs, \$1.20; 100 bulbs, \$10.

PRESIDENT LINCOLN; syn., **QUEEN OF THE VIOLETS.** 2. Clear magenta-violet; large flower; very effective when grown beside a light Yellow Tulip, such as Primrose Queen. Height 12 in. 10 bulbs, 70 cts.; 100 bulbs, \$6.

PRESIDENT TAFT. 2. White, with feathered edge of deep cherry-rose, the color spreading into the petal as the flower ages; large, long flower and a very handsome bedder. A sport of Joost Van Vondel, having the perfect form of that variety. Height 14 in. 10 bulbs, \$1.20; 100 bulbs, \$10.

PRIMROSE QUEEN; syn., **HERMAN SCHLEGEL;** **PRIMROSE DAME.** 3. Primrose, edged canary-yellow; inside clear yellow; medium-sized flower of exquisite form. Height 10 in. 10 bulbs, 60 cts.; 100 bulbs, \$5; 1,000 bulbs, \$45.

PRINCE DE LIGNY. 2. Rich deep yellow; a pointed flower on a tall stem. A fine yellow tulip for bedding. Height 18 in. 10 bulbs, 65 cts.; 100 bulbs, \$5.50.

PRINCE OF AUSTRIA. 2. Brilliant orange-scarlet, yellow base; large and very showy flower; deliciously scented. An extra-fine bedding variety, and unsurpassed for early or late forcing. Height 15 in. 10 bulbs, 70 cts.; 100 bulbs, \$6.

PRINCESS WILHELMINA; syn., **QUEEN OF PINKS.** 1. Deep pink, with striking white flush on outer petals; long pointed flower. Extra fine for bedding. Height 15 in. 10 bulbs, 65 cts.; 100 bulbs, \$5.50; 1,000 bulbs, \$50.

PROGRESSION. 3. White with broad edge of bright carmine-rose, the color spreading with age throughout the whole flower; yellow and white base. A finer flower than Ibis, which it clearly resembles. Height 16 in. 10 bulbs, \$1.20; 100 bulbs, \$10.



PROSERPINE. 1. Rosy carmine, with white base marked slate-blue; an enormous flower of full, globular shape; deliciously scented. An extremely handsome bedding Tulip. Height 14 in. 10 bulbs, \$1; 100 bulbs, \$9.

QUEEN ALEXANDRA. 2. Bright silky carmine of glowing character, without a trace of magenta; large flower of handsome form which we recommend highly for outdoors. Height 13 in. 10 bulbs, \$1.70; 100 bulbs, \$15. See illustration.

QUEEN OF THE NETHERLANDS. 2. Very soft, pale rose, flushed white, with yellow base; very large, egg-shaped flower of superb form. A good pale pink tulip for either bedding or forcing. Height 14 in. 10 bulbs, 65 cts.; 100 bulbs, \$5.50; 1,000 bulbs, \$50.

QUEEN OF THE WHITES. 2. Pure white, with pointed petals and strong stem. One of the best lower-priced white Tulips for bedding purposes. Height 10 in. 10 bulbs, 60 cts.; 100 bulbs, \$5; 1,000 bulbs, \$45.

RED ADMIRAL. 3. Deep orange-scarlet, with narrow edge of pale orange-yellow; clear yellow base. A huge flower of fine habit with noticeably fringed petals. Height 15 in. 10 bulbs, 75 cts.; 100 bulbs, \$6.50.

RISING SUN. 2. Very deep golden yellow; long, huge flower of very handsome form and habit. A sport of Duchesse de Parme, which excels all yellow Tulips for bedding or forcing. Height 16 in. 10 bulbs, \$1; 100 bulbs, \$8.50.

ROSE APLATI. 2. Blush-white, edged pale salmon-rose, with darker rose tone toward base of petals; good sized flower of flattened shape. A fine pink Tulip for bedding, and very daintily beautiful when forced. Height 10 in. 10 bulbs, 60 cts.; 100 bulbs, \$5; 1,000 bulbs, \$44.

ROSE DE HOLLANDE. 2. Creamy white, with pure white edge, which turns with age to a fine penciling of bright pink. Very large, globular flower of fine habit, and splendid stem. An extra-fine bedding variety. Height 14 in. 10 bulbs, 65 cts.; 100 bulbs, \$5.50.

ROSE QUEEN. 2. Cherry-red, with broad stripe of white in center of petals; a long, pointed flower of deeper tone than Princess Wilhelmina. Height 15 in. 10 bulbs, 70 cts.; 100 bulbs, \$6.

SIR THOMAS LIPTON; syn., CARLISLE. 2. Bright crimson, with yellow base, marked olive-green; large, cup-shaped flower of great substance. A very fine variety, the best of all reds for bedding and good for forcing. Height 13 in. 10 bulbs, 85 cts.; 100 bulbs, \$7.50; 1,000 bulbs, \$70.



STANLEY; syn., CRAMOISI POURPRE; ROSE SUPERBE.

3. Rich American Beauty rose of brilliant tone; not a large flower but a very lovely color. Good forcing and bedding variety. Height 10 in. 10 bulbs, 60 cts.; 100 bulbs, \$5; 1000, bulbs, \$46.

THE PEARL. 3. Pale heliotrope, flushed white at base of petals, and white base. Not a large flower, but of a color hitherto unknown in the Early Tulips. Very scarce. Height 12 in. 10 bulbs, \$1.30; 100 bulbs, \$11.

THOMAS MOORE. 2. Dull, rosy terra-cotta, shading at edges of petals to dull orange-yellow; center marked olive-green; medium-sized flower; sweet-scented. Fine for early forcing. Height 15 in. 10 bulbs, 60 cts.; 100 bulbs, \$5; 1,000 bulbs, \$45.

VAN BERGHEM; syn., JOHN BRIGHT. 2. Carmine-red with white center; a very large flower. A wonderfully fine bedding variety. Height 14 in. 10 bulbs, 65 cts.; 100 bulbs, \$5.50; 1,000 bulbs, \$50.

VAN DER NEER. 2. Dark magenta-purple of brilliant tone; large and beautifully formed flower. A superb bedding Tulip and a good midseason forcer. Height 12 in. 10 bulbs, 85 cts.; 100 bulbs, \$7.50.

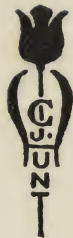
VENUS. 3. Opening white with faint pink markings which deepen, as the flower ages, to form a Picotee edge; yellow base. A fine new early tulip, which might well be called the Picotee of the early tulips. Height 15 in. 10 bulbs, \$2; 100 bulbs, \$18.

WAPEN VAN LEIDEN; syn., ARMS OF LEIDEN. 2. Creamy white, with stripe of carmine-rose through center of petals, and slightly feathered dark rose; a medium-sized flower and very distinct. Fine either for bedding or forcing. Height 15 in. 10 bulbs, 60 cts.; 100 bulbs, \$5; 1,000 bulbs, \$45.

WHITE BEAUTY. 2. Pure white; of great size and substance. A fine sport of Pink Beauty, which is destined to become the finest white bedding Tulip. Height 12 in. 10 bulbs, \$1.40; 100 bulbs, \$12.

WHITE HAWK. 2. Beautiful, pure white; very large, globular flower of great substance, exquisitely formed, with crinkled petals. A superb Tulip for beds, and the finest white forcing variety, lasting a long time in good condition. Height 13 in. 10 bulbs, 65 cts.; 100 bulbs, \$5.50; 1,000 bulbs, \$50.

WOUVERMAN. 2. Rich claret-purple; large flower. Very handsome when bedded with a white variety like Lady Boreel. Height 13 in. 10 bulbs, 65 cts.; 100 bulbs, \$5.50; 1,000 bulbs, \$48.



YELLOW PRINCE; syn., **GOLDEN PRINCE.** 2. Clear yellow, sometimes streaked with dull brownish red; large flower; sweet-scented. A splendid variety for early or late forcing. Height 14 in. 10 bulbs, 65 cts.; 100 bulbs, \$5.50; 1,000 bulbs, \$50.

Later Single Tulips

Among the Tulips generally included with the single early sorts there are a few varieties which bloom from five to six days after the others, or just enough later to mar the bedding effect where they are planted with the early kinds. These varieties are here grouped together with the purpose of suggesting that they should be grown by themselves, and not with the early sorts. They are all extremely beautiful, and serve to fill in a gap between the April-blooming Tulips and the first of the Cottage Tulips.

CERISE GRIS-DE-LIN. 4. Soft carmine-rose, shaded fawn and margined creamy white, with yellow base; large flower of globular form. Very novel coloring, and a handsome bedding and late forcing variety. Height 13 in. 10 bulbs, 85 cts.; 100 bulbs, \$7.50.

COULEUR CARDINAL. 4. Brilliant crimson-scarlet, with a purplish bloom on the outer petals and yellow base; fine, large flower on a very strong stem. Superb for beds or late forcing. Height 13 in. 10 bulbs, \$1; 100 bulbs, \$8.

GOLDEN HORN. 4. Pale primrose-yellow, bordered orange; large flower of very beautiful shape. Fine for bedding and very late forcing. A sport of Rosa Mundi Huyckman. Height 11 in. 10 bulbs, 70 cts.; 100 bulbs, \$6.

LE REVE; syn., **AMERICAN LAC;** **HOBHEMA;** **SARAH BERNHARDT.** 4. Old-rose, flushed buff; a very large, globular flower with rounded petals and carried on a strong stem. Very beautiful when grown out-of-doors. Fine for late forcing; if forced early the color is not so clear. Height 13 in. 10 bulbs \$1; 100 bulbs, \$8.

L'INTERESSANTE. 4. Dark mauve-violet, edged glistening white, with broader white margin inside; yellow base. A new variety remarkable for the high quality of its coloring. Height 13 in. 10 bulbs, 65 cts.; 100 bulbs, \$5.50.

ROSA MUNDI HUYCKMAN. 4. Bright rose-pink, with broad white stripe through center of petals; large flower, exquisitely formed. Very handsome for bedding. Height 11 in. 10 bulbs, 60 cts.; 100 bulbs, \$5.

ROSE LUISANTE. 4. Brilliant, deep rose-pink; large flower of great substance. Splendid for bedding or late forcing. Height 12 in. 10 bulbs, \$1; 100 bulbs, \$8.50.



WHITE SWAN. 4. Pure white; large, oval flower of handsome form. Superb for cutting, bedding or late forcing. Height 15 in. 10 bulbs, 60 cts.; 100 bulbs, \$5; 1,000 bulbs, \$45.

YELLOW SWAN. 4. Very soft lemon-yellow, changing to primrose and tinged palest rose as the flower ages; a long flower of lovely color and shape. Height 15 in. 10 bulbs, \$2; 100 bulbs, \$18.

Double Tulips

The great value of the Double Tulips lies chiefly in their showy and lasting qualities. For beds and borders, where a display of color may be desired, they are very satisfactory, though lacking in the grace of form and habit which Single Tulips possess to such a marked degree. During heavy rains the huge blooms are apt to be broken off, and it is best to plant where they may have some protection from heavy winds. For culture in pots Double Tulips are attractive because of their size and extra fullness, but they cannot be forced very early. It is hardly necessary, since the double kinds lack the charm of the single forms, to list more than a few of the best and most striking varieties. Double Tulips generally come into flower a trifle later than the Single Early Tulips.

ARABELLA. 2. Bright cerise, inside shaded scarlet; not very full, but a fine clear color suited to the border. Height 12 in. 10 bulbs, 70 cts.; 100 bulbs, \$6.

BLEU CELESTE; syn., **BLUE FLAG.** 5. Soft violet-purple; large flowers of very pleasing color. A beautiful Tulip for cutting or late forcing. A variety much later than other Double Tulips. Height 16 in. 10 bulbs, 75 cts.; 100 bulbs, \$6.50.

BOULE DE NEIGE. 2. Pure white; large, full flower, resembling a white peony. Splendid for bedding or forcing. Height 10 in. 10 bulbs, 75 cts.; 100 bulbs, \$6.50.

CHERRY RIPE. 3. Cherry-crimson, a very handsome color; large flower which lasts a long time and is exceedingly showy. Height 11 in. 10 bulbs, \$1; 100 bulbs, \$8.

COURONNE D'OR. 2. Deep yellow, flushed orange-red; large flower. A splendid bedding Tulip and a good forcer. Height 11 in. 10 bulbs, 70 cts.; 100 bulbs, \$6; 1,000 bulbs, \$55.

DON CARLOS. 2. Deep glowing crimson; an immense flower on a stout stem. The best Double Tulip of this color. Height 12 in. 10 bulbs, \$1.80; 100 bulbs, \$16.

EL TOREADOR. 2. Bright orange-scarlet, broadly margined buff-yellow; large. Fine for beds or forcing. Height 12 in. 10 bulbs, \$1.20; 100 bulbs, \$10.



- GOLDEN KING.** 1. Soft canary-yellow, shaded deeper yellow with black anthers; very large and beautiful flower for bedding. Height 13 in. 10 bulbs, \$1; 100 bulbs, \$8.
- LA CITADELLE.** 3. Dull garnet with purple bloom and edged bright amber-yellow; a showy Tulip of a color combination like some types of stained glass. Height 13 in. 10 bulbs, 65 cts.; 100 bulbs, \$5.50.
- LA JOLIE.** 2. Deep rosy lilac; a loosely built flower of moderate size, with pointed petals, very decorative in character. A fine bedding variety, the best of this color. Height 12 in. 10 bulbs, \$1; 100 bulbs, \$9.
- LE MATADOR.** 3. Rich, glowing scarlet, with purple bloom on the outside of the petals; large, globular flower. Very effective in beds, and fine for forcing. Height 11 in. 10 bulbs, 75 cts.; 100 bulbs, \$6.50.
- LORD BEACONSFIELD.** 3. Brilliant carmine-rose; large flower of distinct shape, and very double. Fine for bedding or forcing. Height 12 in. 10 bulbs, 75 cts.; 100 bulbs, \$6.50.
- LORD ROSEBERRY.** 1. Delicate light pink; large flower on a good stem. The color remains clean until the petals fall. A splendid sort for early forcing. Height 12 in. 10 bulbs, 65 cts.; 100 bulbs, \$5.50.
- LUCRETIA.** 2. White, heavily flushed bright rose-pink, slightly paler at tips of petals; very large, loosely built flower of fine color for bedding. Height 12 in. 10 bulbs, 60 cts.; 100 bulbs, \$5; 1,000 bulbs, \$45.
- LUMINOSA.** 2. Brilliant orange-scarlet, almost the color of an oriental poppy; very large, full flower of extremely showy character. A superb bedding variety. Height 12 in. 10 bulbs, 80 cts.; 100 bulbs, \$7.
- MR. VAN DER HOEF.** 3. Golden yellow; large full flower and a sport of Murillo with all the good qualities of that well-known favorite for both forcing and bedding. Height 11 in. 10 bulbs, \$1.30; 100 bulbs, \$11.
- MURILLO.** 3. Delicate rose-pink, flushed white; good-sized flower. Fine for bedding, and the easiest forcer of all Double Tulips. Height 11 in. 10 bulbs, 55 cts.; 100 bulbs, \$4.50; 1,000 bulbs, \$40.
- PEACH BLOSSOM.** 3. Bright rose-pink, flushed white, deepening with age to carmine-rose; large, very double flower of very handsome color. A new sport of Murillo, which will be a favorite variety for forcing in the near future. Height 12 in. 10 bulbs, \$1.40; 100 bulbs, \$12.



PRINCE OF ORANGE. 2. Light yellow, broadly edged fiery orange; when fully open, clear orange-yellow, with yellow base. A large full flower of most intense color for outdoors. Height 11 in. 10 bulbs, \$1; 100 bulbs, \$8.

QUEEN EMMA. 3. White, with wide border of bright cerise-scarlet; medium-sized bloom of very lively tone. Height 11 in. 10 bulbs, 70 cts.; 100 bulbs, \$6.

ROSE D'AMOUR. 3. Pale flesh-rose, deepening with age to soft salmon-rose; distinct shape and very lovely color. An especially beautiful Tulip for bedding or forcing. Height 12 in. 10 bulbs, 80 cts.; 100 bulbs, \$7.

SAFRANO; syn., SULPHUR MURILLO; BRIMSTONE BEAUTY; TEA ROSE. 2. Soft pale yellow, tinged light rose. A very distinct color in Double Tulips. Fine for bedding or forcing. Height 11 in. 10 bulbs, 65 cts.; 100 bulbs, \$5.50; 1,000 bulbs, \$50.

SCHOONOORD. 2. Beautiful white sport of Murillo; large and very full flower. The best white among the Double Tulips. Height 13 in. 10 bulbs, 70 cts.; 100 bulbs, \$6.

SWEETHEART. 2. White, slightly tinged pale rose with age; very large and very double flower, carried on a stiff stem. Superb for bedding, as the habit of the foliage adds much to the beauty of the flower. Height 12 in. 10 bulbs, 85 cts.; 100 bulbs, \$7.50.

VIRGINIA. 1. White, edged and suffused soft rose. The first of all Double Tulips to bloom, and a beautiful variety for forcing. Height 14 in. 10 bulbs, \$1.40; 100 bulbs, \$12.

VUURBAAK. 2. Fiery scarlet, tinged orange when open; large flower. Very showy for beds and fine for forcing. Height 11 in. 10 bulbs, 85 cts.; 100 bulbs, \$7.50.

YELLOW ROSE. 5. Beautiful, deep yellow; large and very fragrant. Most valuable for bedding and cutting. Blooms very late. Height 14 in. 10 bulbs, 70 cts.; 100 bulbs, \$6.

May-Flowering or Cottage Tulips

After the disastrous collapse of the Tulip craze in Holland, the highly prized bulbs rapidly made their way into the gardens of England and France, where they soon gained a widespread favor. By the close of the eighteenth century the public taste had drifted away from the Tulips, and the bulbs came very commonly into the hands of the cottagers and the less wealthy



Mr. Hunt Chooses for You

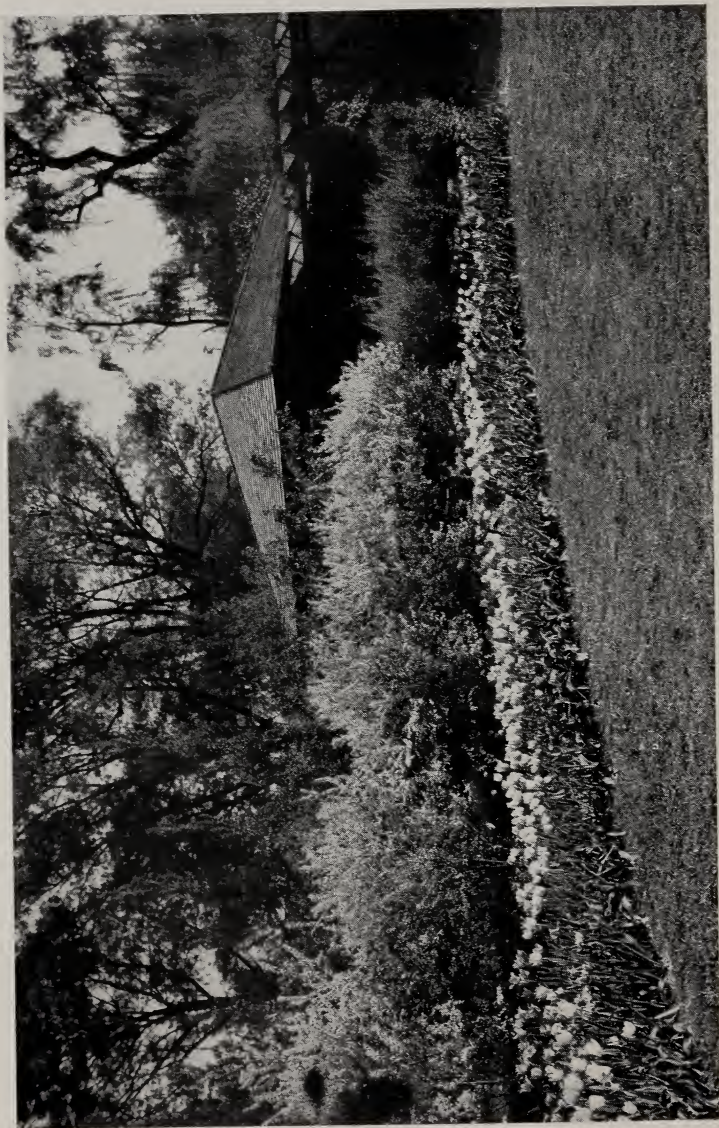


HIS list of the standard moderate-priced Cottage Tulips. A selection including typical forms and colors in this class which we recommend to the beginner as being varieties sure to give satisfaction.

Order Recommendation BB

Ten bulbs of each for \$6.75

ELEGANS LUTEA MAXIMA	MOONLIGHT
FAIRY QUEEN	ORANGE KING
FULGENS LUTEA MAXIMA	PICOTEE
INGLESCOMBE PINK	PLUTO
JOHN RUSKIN	THE FAWN



In the Cottage Tulip Garden



landowners. In their lowlier surroundings these Tulips have survived until the present increased interest in the late Tulips has made them sought after with painstaking diligence. Many of them, through neglect or uncongenial situation, had so dwindled in size as to be but tiny caricatures of their former splendor. Through proper cultivation they have regained their size and vigor, and together with hundreds of new seedlings have been re-introduced into the gardens and country places where once they were despised. The circumstance of their existence (or persistence, to speak more worthily of them) has given them the name by which they are now known.

Among them are some of the most exquisitely beautiful flowers of all the royal race of Tulips. From glittering reds to glistening yellows, dainty pinks and chaste whites, they run riot across the painter's palette. For planting in borders of perennials, or for cozy groupings among shrubbery, where the roots of the bushes are not too antagonistic, they are unsurpassed; while their habit of growth, some on stiff, sturdy stalks, others on gracefully drooping stems, lends itself charmingly to almost any device for brightening up the borders in mid-May. It should be noted that it is only in the Cottage Tulips that one may obtain the clear yellow tone among the Late Tulips. Detailed planting directions are included with the shipment of the bulbs.

The following list contains the choicest of the standard sorts, and the best of the newer introductions.

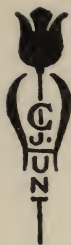
The figure following the name indicates the relative time of flowering.

AEGIS. 3. Self colored cherry-rose, with slightly ruffled petals and white base with faint blue halo. Large flower on very strong stem. Height 20 in. 10 bulbs, \$2; 100 bulbs, \$18.

AMBER CROWN. 3. Pale buff-yellow, with broad stripe of soft lilac-brown; beautiful green base. A low-growing variety of unusual color among the Cottage Tulips. Height 18 in. 10 bulbs, \$1.50; 100 bulbs, \$13.

AMBROSIA. 3. Lilac-rose, with broad tan edge; inside bright orange changing to tan; yellow base and green halo. An interesting and very beautiful combination of colors, one of the finest of the new Cottage Tulips. Height 24 in. 10 bulbs, \$2.60; 100 bulbs, \$24.

ARETHUSA. 2. Pale primrose, edged lemon yellow; inside pale lemon yellow. Tall, loosely built flower of most graceful habit. A splendid new variety which will prove to be the best of all light yellow Tulips. Height 30 in. Single bulb, 75 cts.; 10 bulbs, \$5.



AURORA. 2. Pale chrome-yellow, edged and flushed brilliant scarlet; medium-sized flower of pointed shape. A showy Tulip for the border. Height 22 in. 10 bulbs, \$1.20; 100 bulbs, \$10.

AVIS KENNICOTT. 2. Rich chrome-yellow, with black base and anthers; long flower of immense size. The best bright yellow Cottage Tulip for the garden. Height 25 in. 10 bulbs, \$1.40; 100 bulbs, \$12.

BOUTON D'OR; syn., IDA; GOLDEN BEAUTY. 2. Deep chrome-yellow, with black anthers; medium-sized, cup-shaped flower of great beauty for cutting. Fine for late forcing. Height 20 in. 10 bulbs, 55 cts.; 100 bulbs, \$4.50; 1,000 bulbs, \$40.

BRIGHTNESS. 2. Bright crimson with pointed petals and clear white base; inside brilliant scarlet. A rather small flower, but an unusually bright bit of color in the garden. Height 20 in. 10 bulbs, \$2.20; 100 bulbs, \$20.

CELIA. 2. Soft rosy lilac, edged pale amber-yellow, with brilliant starry blue base, which turns to almost an azure blue; long flower with rather pointed petals and loose, open form. A tulip noteworthy because of the fine blue base. Height 16 in. 10 bulbs, \$2; 100 bulbs, \$18.

CORONATION SCARLET. 4. Bright scarlet; long flower, with reflexing petals, often giving three or more flowers from each bulb. Height 20 in. 10 bulbs, 65 cts.; 100 bulbs, \$5.50.

COTTAGER. 4. Soft cherry-rose, with yellow base and bright green star; loosely built and of graceful shape. Height 22 in. 10 bulbs, 60 cts.; 100 bulbs, \$5.

DAYBREAK. 2. Dull mauve, with broad creamy white margin, and pale green base; long flower of medium size and delicately soft color. Height 17 in. 10 bulbs, 60 cts.; 100 bulbs, \$5; 1,000 bulbs, \$45.

DIDO. 2. Deep coral-pink, edged light orange; inside glowing flame color, with broad light orange edge; yellow base with bright green halo. Long, large flower of very showy color, tall and vigorous. A very striking novelty. Height 28 in. Single bulb, \$1.

ELEGANS ALBA; syn., WHITE CROWN. 2. Creamy white with narrow margin of carmine-rose; large flower, with reflexing petals. Like Picotee, except that the color does not spread as the flower ages. Fine for borders or late forcing. Height 20 in. 10 bulbs, \$1; 100 bulbs, \$8.



ELEGANS LUTEA MAXIMA; syn., GOLDEN SPIRE. 3.

Soft canary-yellow, slightly flushed orange-red as the flower ages; large flower, with pointed reflexing petals. A splendid Tulip for outdoor planting. Height 15 in. 10 bulbs, 80 cts.; 100 bulbs, \$7. See illustration.

ELEGANS LUTEA PALLIDA; syn., LEGHORN BONNET. 3.

Soft primrose; large flower; slightly reflexing. A very lovely Tulip for borders and for cutting; the palest in the yellow shades. Height 16 in. 10 bulbs, 55 cts.; 100 bulbs, \$4.50; 1,000 bulbs, \$40. ✓

EMERALD GEM. 4. Soft orange, with flush of old-rose; inside deeper orange, with yellow base starred greenish olive. A fine Tulip for planting among evergreens. Height 20 in. 10 bulbs, 65 cts.; 100 bulbs, \$5.50.

FAIRY QUEEN. 3. Soft rosy lilac, broadly margined amber-yellow; very large flower of perfect form; effective planted with John Ruskin. Height 20 in. 10 bulbs, 60 cts.; 100 bulbs, \$5; 1,000 bulbs, \$45.

FLAVA. 5. Creamy canary-yellow; large, handsomely formed flower on stiff stem. Unusually decorative foliage of a silvery green color. An ideal Tulip for borders among the Darwin Tulips and in good condition after most of the late Tulips have gone. Height 25 in. 10 bulbs, \$1.70; 100 bulbs, \$15.

FULGENS. 2. Clear crimson with yellow and white base; long flower with reflexing petals carried on tall, stiff stem. Very striking in borders. May be forced slowly. Height 30 in. 10 bulbs, 55 cts.; 100 bulbs, \$4.50; 1,000 bulbs, \$40.

FULGENS LUTEA MAXIMA; syn., MRS. MOON. 4. Rich golden yellow; large flower of great beauty and substance, with pointed petals carried on stout stem. A very handsome Tulip for out-of-doors. Height 25 in. 10 bulbs, 85 cts.; 100 bulbs, \$7.50; 1,000 bulbs, \$70.

FULGENS LUTEA PALLIDA; syn., SOLFATARA. 2. Pale sulphur-yellow; large, reflexing flower of very graceful habit. A beautiful Tulip for borders. Height 18 in. 10 bulbs, \$1; 100 bulbs, \$8. ✓

GESNERIANA AURANTIACA; syn., GLOBE OF FIRE. 4. Brilliant orange-scarlet with greenish yellow base; long, narrow flower. Fine for out-of-doors. Height 22 in. 10 bulbs, 60 cts.; 100 bulbs, \$5; 1,000 bulbs, \$45.

GESNERIANA IXIOIDES. 4. Soft primrose-yellow, with black base; egg-shaped flower of medium size, attractive for the contrast between the base and the rest of the flower. Height 22 in. 10 bulbs, 75 cts.; 100 bulbs, \$6.50; 1,000 bulbs, \$60. ✓



GESNERIANA LUTEA. 4. Deep yellow; a flower of perfect form, and large size; handsome for growing among shrubbery. Height 24 in. 10 bulbs, 60 cts.; 100 bulbs, \$5; 1,000 bulbs, \$45.

GESNERIANA LUTEA PALLIDA; syn., MRS. KEIGHTLY. 3. Pale yellow; large flower, finely shaped and sweet-scented; a beautiful variety. Height 24 in. 10 bulbs, 65 cts.; 100 bulbs, \$5.50; 1,000 bulbs, \$50.

GESNERIANA SPATHULATA; syn., GESNERIANA MAJOR. 3. Rich crimson-scarlet, with brilliant blue base; large flower; very effective when seen from a distance against a background of evergreens. Height 24 in. 10 bulbs, 55 cts.; 100 bulbs, \$4.50; 1,000 bulbs, \$40.

GLARE OF THE GARDEN; syn., MACULATA GLOBOSA GRANDIFLORA. 4. Rich crimson-red, with black center, edged yellow; long, large flower of exceedingly handsome appearance. One of the best red Cottage Tulips. Height 21 in. 10 bulbs, \$1.30; 100 bulbs, \$11.

HAMMER HALES. 3. Golden brown, flushed old-rose, inside bright apricot, edged bronze-yellow, with yellow base and green halo. A very long flower. Height 24 in. 10 bulbs, \$1.30; 100 bulbs, \$11.

HONEYMOON. 1. Soft primrose, growing paler as the flower ages. A large flower very much like Moonlight in color, but finer in every respect. Height 28 in. 10 bulbs, \$1.80; 100 bulbs, \$16.

ILIAS. 3. Soft heliotrope with white base. A large flower of silky texture, quite distinct in color among the Cottage Tulips. Effective when planted with paler yellow varieties. Height 24 in. 10 bulbs, \$2; 100 bulbs, \$18.

ILLUMINATOR. 3. Deep yellow, flamed and flushed dull orange; large flower of striking tone. Splendid for planting among shrubbery with the orange shades. Height 25 in. 10 bulbs, \$1.80; 100 bulbs, \$16.

INGLESCOMBE PINK; syn., SALMON QUEEN. 2. Soft rosy pink, with salmon flush, changing with age to rose. Large, globular flower of distinct form, superb for borders and late forcing. Height 24 in. 10 bulbs, 55 cts.; 100 bulbs, \$4.50; 1,000 bulbs, \$40.

INGLESCOMBE SCARLET. 4. Intense vermilion-red, with black base; large, showy flower on a graceful stem. Fine for borders and shrubbery. Height 20 in. 10 bulbs, 55 cts.; 100 bulbs, \$4.50; 1,000 bulbs, \$40.



The Newer or Rarer Cottage
Tulips for the Fancier's
Collection



HERE we offer Mr. Hunt's selection of the very finest things in the Cottage Tulips. This is a set to meet the requirements of the amateur who simply must have the newest and the finest sorts only.

Order Recommendation CC

Ten bulbs of each for \$14.95

AEGIS

AMBER CROWN

AVIS KENNICOTT

HAMMER HALES

HONEYMOON

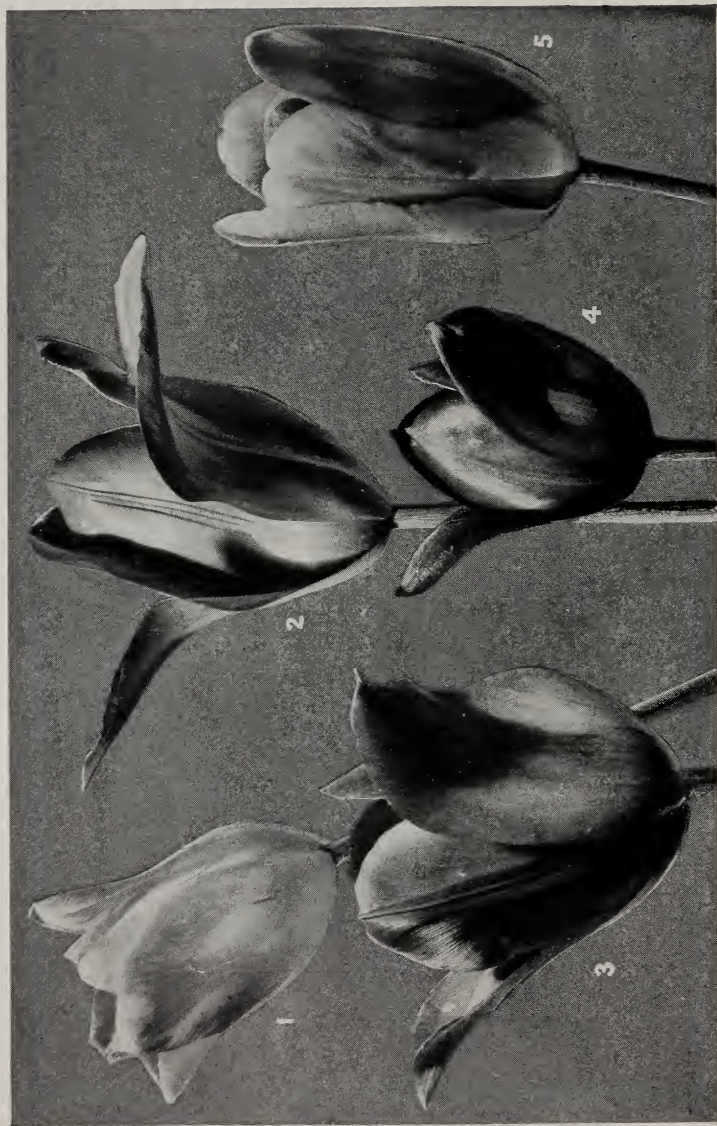
ILLUMINATOR

JOHN RUSKIN

MRS. KERRELL

SIR HARRY

TWILIGHT



1—Picotee Yellow 2—*Elegans lutea Maxima* 3—Quaintness 4—Walter T. Ware
5—John Ruskin



INGLESCOMBE YELLOW. 4. Glossy canary-yellow; large, globular flower of perfect form, on sturdy stem, in some seasons showing a narrow crimson edge. Very fine for borders or among shrubs and evergreens. Height 21 in. 10 bulbs, 60 cts.; 100 bulbs, \$5; 1,000 bulbs, \$45.

INNOVATION. 3. White, tipped and feathered soft carmine; wonderful dark blue base; large flower of fine shape. The color at tips of petals is very striking when the flower is closed. Height 18 in. 10 bulbs, 75 cts.; 100 bulbs, \$6.50.

JOHN RUSKIN. 3. Salmon-rose, edged soft lemon-yellow; inside deep rosy lilac, with broad margin of yellow and a yellow base; large flower of fine shape on a graceful stem. A beautiful variety of opalescent character in its coloring. Height 16 in. 10 bulbs, 85 cts.; 100 bulbs, \$7.50. See illustration. ✓

KINGFISHER. 2. Creamy yellow ground, with age turning whiter, irregularly striped and feathered maroon and violet; blue-green base; large flower. A most interesting variety. Height 18 in. 10 bulbs: \$2.70; 100 bulbs, \$25.

LA CANDEUR; syn., PARISIAN WHITE. 2. Silvery white; as the flower ages, it turns to a soft rose; medium size and globular form. Fine for borders. Height 16 in. 10 bulbs, 55 cts.; 100 bulbs, \$4.50; 1,000 bulbs, \$40.

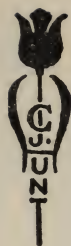
LA MERVEILLE. 4. Orange-scarlet, flushed rose, with yellow base; very long, large flower of exquisite form, deliciously scented. A superb variety for any purpose. Height 20 in. 10 bulbs, 60 cts.; 100 bulbs, \$5; 1,000 bulbs, \$45.

LEDA. 3. Bright luminous cherry-pink, slightly paler at margins; inside deep cherry with large white base and blue halo. Large, egg-shaped flower of most glowing character. One of the new Cottage Tulips which should be in every collection. Height 24 in. Single bulb, \$5.

MARVEL. 2. Amber yellow, with rosy lilac flush at center of petals; inside bright yellow shaded brown toward base with green star. Medium-sized flower, becoming quite yellow with age. Height 25 in. 10 bulbs, \$1.80; 100 bulbs, \$16.

MENTOR. 3. Orange-scarlet flushed deep rose with orange edge growing more rosy as it ages; yellow base. A long beautifully shaped flower, the petals curving inward at the tips, with strong stem. Height 22 in. 10 bulbs, \$1.50; 100 bulbs, \$13.

MISS WILLMOTT. 4. Soft primrose-yellow, passing with age into a darker tone; long, large flower with slightly reflexing petals on a sturdy stem. Height 18 in. 10 bulbs, 65 cts.; 100 bulbs, \$5.50; 1,000 bulbs, \$50.



MOONLIGHT. 1. A soft, but luminous canary-yellow; very long, oval-shaped flower with outer petals reflexing at the tip. This is a standard variety among the paler yellow Cottage sorts. Superb for any outdoor purpose, and fine for late pot culture. Height 25 in. 10 bulbs, 70 cts.; 100 bulbs, \$6; 1,000 bulbs, \$55.

✓ MRS. KERRELL. 3. Opening salmon-rose, with age becoming rose, edged soft salmon, with blue and white base; pointed flower of open form. A rather small flower, but one of the most distinct colors among the Cottage Tulips. Height 18 in. 10 bulbs, \$1.60; 100 bulbs, \$14.

ORANGE KING. 4. Glistening deep orange, shaded rose, inside deep orange-scarlet with yellow base; sweet-scented; a globular flower of great size and brilliant coloring. Most attractive for beds or borders. Height 23 in. 10 bulbs, 60 cts.; 100 bulbs, \$5; 1,000 bulbs, \$46.

ORIANA. 2. Deep rose red, shading at edge to dull burnt orange; inside dull carmine, edged and suffused orange brown, and greenish yellow base. A large flower of an unusual color. Height 24 in. 10 bulbs, \$1.40; 100 bulbs, \$12.

PARISIAN YELLOW; syn., ANNIE. 5. Bright yellow; large, pointed flower. Very attractive among shrubbery. Height 20 in. 10 bulbs, 55 cts.; 100 bulbs, \$4.50; 1,000 bulbs, \$40.

PERDITA. 2. Dark crimson with rosy bloom and narrow edge of clear yellow stippled with red; inside bright scarlet with broad yellow edge stippled red on upper half of petals, black and yellow base; a long flower of reflexing form. Height 18 in. 10 bulbs, \$1.80; 100 bulbs, \$16.

PICOTEE; syn., MAIDEN'S BLUSH. 3. White, margined deep rose, the color suffusing the whole flower as it ages; good-sized flower, reflexing. A very graceful Tulip for the border. Height 20 in. 10 bulbs, 55 cts.; 100 bulbs, \$4.50; 1,000 bulbs, \$40.

PICOTEE YELLOW. 3. Soft canary-yellow, with narrow edge of crimson which suffuses the flower as it ages; large flower of sturdy, graceful habit. Though not a sport of Picotee, it is a yellow counterpart of the variety from which it takes its name. Height 20 in. 10 bulbs, 65 cts.; 100 bulbs, \$5.50. See illustration.

PLUTO. 3. Self-colored rose-pink; good-sized flower of beautiful color and shape, with white base and blue star; well suited for planting with pale yellow shades. Height 25 in. 10 bulbs, 65 cts.; 100 bulbs, \$5.50; 1,000 bulbs, \$50.



PRIDE OF INGLEScombe. 3. White, edged deep carmine-rose, with age becoming suffused carmine-rose; white base starred blue. A long, beautifully shaped Tulip of Picotee type, but a darker and brighter color. Height 23 in. 10 bulbs, 85 cts.; 100 bulbs, \$7.50.

QUAINTNESS. 4. Golden brown, flushed on center of petals dull old-rose; inside golden brown, deepening to mahogany-brown at the yellow base; long, large flower, of pointed form. A strange color in Cottage Tulips. Fine for outdoors. Height 20 in. 10 bulbs, \$2; 100 bulbs, \$18. See illustration.

RETROFLEXA. 1. Light yellow; very decorative, urn-shaped Tulip, with recurving petals, giving a lily-like effect; fine for cutting. Height 16 in. 10 bulbs, 60 cts.; 100 bulbs, \$5; 1,000 bulbs, \$45.

RETROFLEXA SUPERBA. 1. An improved form of Retroflexa, with larger flowers, having broad recurved petals. Height 18 in. 10 bulbs, 85 cts.; 100 bulbs, \$7.50.

ROSE RIANTE. 3. Self-colored clear carmine-rose of very clean tone; inside carmine-rose with white base margined bright steel-blue. A large flower and tall grower. Height 28 in. 10 bulbs, \$2; 100 bulbs, \$18.

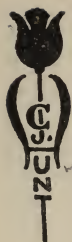
SIRENE. 3. Soft lilac-rose, slightly paler at edges; a new seedling with recurving petals and splendid for planting with Retroflexa. Height 16 in. 10 bulbs, \$1.60; 100 bulbs, \$14.

SIR HARRY. 4. Pale lavender-pink of an unusual tone, with yellow base and dull blue halo; large flower of pointed shape very broad at base, with waved petals. A fine variety for combining with creamy yellow varieties. Height 26 in. 10 bulbs, \$1; 100 bulbs, \$8.

SOLFERINA. 3. Pale creamy yellow, with whitish bloom, and narrow edge of soft canary-yellow; rather long, egg-shaped flower, even paler in color than Moonlight. Recommended for planting in partial shade. Height 24 in. 10 bulbs, \$1.60; 100 bulbs, \$14.

STRIPED BEAUTY; syn., SUMMER BEAUTY. 3. Silvery rose, blotched and striped dark carmine and white; large, showy flower on a graceful stem. A splendid variety for outdoors or late forcing. Height 18 in. 10 bulbs, 65 cts.; 100 bulbs, \$5.50.

TANGERINE. 3. Coral-pink, with edge of bright orange, changing to self-colored pale orange; inside glowing flame, with brighter edge and yellow and green base. A wonderful flame-colored tulip of fine shade and vivid coloring; the finest novelty we have offered in many seasons. Height 22 in. 10 bulbs, \$3.



7.69
THE FAWN. 4. Pale rosy fawn, changing to cream, flushed blush-rose; large, egg-shaped flower of exquisite beauty on graceful stem. A gem among Late Tulips. Height 20 in. 10 bulbs, 60 cts.; 100 bulbs, \$5; 1,000 bulbs, \$45.

THE LIZARD. 4. Deep blood-red, with purple bloom, striped and feathered yellow and white. A Tulip of most unusual markings. Height 24 in. 10 bulbs, 80 cts.; 100 bulbs, \$7.

TWILIGHT. 2. Dull violet-mauve, edged warm brown, irregularly striped and flamed dark violet; white base with blue halo, and striking white midrib; long, good-sized flower of perfect shape. A Tulip of very rich color, and best seen in late afternoon. Height 23 in. 10 bulbs, \$1.70; 100 bulbs, \$15.

UNION JACK; syn., DISTINCTION. 1. Light violet, feathered purple, with a few markings of white; blue base; large flower. A very striking variety for borders or late forcing. Height 20 in. 10 bulbs, 70 cts.; 100 bulbs, \$6.

VITELLINA. 3. Primrose, becoming creamy white as the flower ages; large flower; sweet-scented. A very lovely Tulip for outdoor planting and a good forcer. Height 20 in. 10 bulbs, 60 cts.; 100 bulbs, \$5; 1,000 bulbs, \$45.

WALTER T. WARE. 4. Deep golden yellow, the deepest and richest color among Late Tulips; broad, globular flowers, reflexing at the top. A variety remarkable for its lasting qualities and color. Height 18 in. 10 bulbs, \$3.20; 100 bulbs, \$30. See illustration.

ZOMERSCHOON. 4. White, feathered and striped deep cherry-pink, white base. The color suffuses the flower with age. Large, beautifully formed flower of very clean color. Height 20 in. 10 bulbs, \$4.

Darwin Tulips

The Darwin Tulips properly belong among the race of Tulips known as "Breeders." They were developed in the north of France, supposedly from choice varieties of Bybloem Tulips, though the brilliance of their colors seems to indicate that they must possess a strain of Gesneriana blood. Owing to the unusual clearness of the colors, to the thick substance of the petals, and to their vigorous habit of growth, these seedlings, when they came into the hands of one of the prominent Dutch firms, seemed worthy of forming a new class of Tulips. In 1889 they were fitly named in honor of the great evolutionist, and first offered for sale. They remained little known for a number of years, but with the renewed interest in the Tulip, which sprang up in England at the beginning of the present decade, they commenced to receive the attention of the enthusiasts. In America the Darwins are



Three Groups of Darwin Tulips



STANDARD, inexpensive varieties for those who are going to have Tulips in their garden for the first time.

Order Recommendation DD

Ten bulbs of each for \$6.45

BARONNE DE LA TONNAYE	LA TRISTESSE LA TULIPE NOIRE
BLUE AIMABLE	MARCONI
CLARA BUTT	NAUTICAS
EUTERPE	PRIDE OF HAARLEM
	SUZON

Select List of better kinds

Mr. Hunt considers this the best selection of standard moderate priced Darwin Tulips.

Order Recommendation EE

Ten bulbs of each for \$8.90

EDMEE	PRINCESS ELIZABETH
FLAMINGO	RAPHAEL
GRYPHUS	SOPHROSYNE
MATTIA	VALENTIN
MELICETTE	VIKING

And finally

The De Luxe List

Order Recommendation FF

Ten bulbs of each for \$19.75

AFTERGLOW	LOUISE DE LA VALLIERE
APHRODITE	MADAME BARROIS
GIANT	MASSENET
JUBILEE	RONALD GUNN
LA FIANCEE	THE BISHOP



Red Darwins against a green background



now widely appreciated, and their popularity here promises soon to exceed the favor they have enjoyed so long abroad.

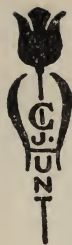
The colors include the very brilliant scarlets and crimsons of the early Tulips, and the more somber tones of red as well. The shades of rose and pink, of violet, and purple are unsurpassed in any others of the Tulips for their delicacy or their full richness of color. There are certain slaty blues and blue-violets which might also be called a blue, while the romancer's "Black Tulip" is very nearly realized in some of the dark maroon varieties. There are whites, but no yellows. All the bronze and buff tones often classed as Darwins are Breeders; while bright yellow and orange-scarlet must be sought among the Cottage Tulips. The Darwins may be left undisturbed for two or three years, but it must be kept in mind that the Tulip is not long-lived in our soil and climate, under ordinary circumstances. The stems of the Darwins are very long and sturdy, giving a noble stateliness peculiar to this class.

For the borders, among other hardy flowers, for isolated groupings against a background of shrubs, or for combinations of delicate colors for effects of contrast in the flower-garden, the Darwins are matchless. Their beauty is maddening, whether they are seen wide open in the strong glare of midday, or in the quieter light just before dusk, when the closed flowers best show the grace of their charmingly distinct shapes and the softness of their pale colors. It is this very softness of color which, at first sight, fastens the spell of the Darwins upon the lover of garden beauty. The colors have the quality of true pastel shades, and all the varieties (with the possible exception of the scarlet-red tones) combine in the border so harmoniously that the danger of a jarring note in the most haphazard planting is quite negligible. For carefully studied arrangements of these Tulips, the color schemes on page 8 should be consulted. In pots, if brought into heat not earlier than the middle of January, they force very successfully; and in the following list the sorts adapted to forcing are indicated. When forced, some varieties lose their true color, but even so they gain a pleasing softness that compensates for the lack of brilliancy.

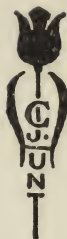
Detailed planting directions are included with the shipment of the bulbs.

The figure following the name indicates the relative time of flowering.

AFTERGLOW; syn., **KATHERINE HAVEMEYER**. 4. Deep, rosy orange, with salmon shading at edges of petals; inside deep orange with yellowish base. A sport of *Baronne de la Tonnay* of interest because it is the first instance of a Darwin sporting to the Breeder tones. A showy Tulip for outdoors. Height 26 in. 10 bulbs, \$2.20; 100 bulbs, \$20.



- ANDRE DORIA.** 1. Velvety reddish maroon, shading to bright blood-red, with black base; fine, large flower of satiny texture. One of the finest varieties for borders or forcing. Height 28 in. 10 bulbs, 75 cts.; 100 bulbs, \$6.50; 1,000 bulbs, \$60.
- ANTON ROOZEN.** 2. Vivid rose-pink, edged pale rose, with white base marked blue; a slightly darker shade than *Baronne de la Tonnaye*. Large, cup-shaped flower of great beauty. Height 28 in. 10 bulbs, 75 cts.; 100 bulbs, \$6.50; 1,000 bulbs, \$60.
- APHRODITE.** 3. Clear, silvery rose-pink with white base; a good-sized round flower of exquisite color on a very tall, stiff stem. Superb for any situation. Height 34 in. 10 bulbs, \$2.20; 100 bulbs, \$20.
- ARIADNE.** 2. Brilliant rosy crimson, shaded scarlet, with blue base; large flower of great substance. An extra-fine Darwin for outdoors or for late forcing. Height 28 in. 10 bulbs, 75 cts.; 100 bulbs, \$6.50; 1,000 bulbs, \$60.
- BARONNE DE LA TONNAYE.** 4. Bright rose, margined blush-rose; medium-sized, cup-shaped flower, retaining its color well. A sturdy variety for bedding. Height 26 in. 10 bulbs, 55 cts.; 100 bulbs, \$4.50; 1,000 bulbs, \$40.
- BERTHOLD SCHWARTZ.** 2. Bright garnet, flushed rose at extreme edge of petals; large flower of very bright character and novel color. Height 25 in. 10 bulbs, \$1; 100 bulbs, \$8.
- BLEU AIMABLE.** 4. Pale lavender, with white base, starred blue; a beautiful flower of very distinct shape. Height 25 in. 10 bulbs, 75 cts.; 100 bulbs, \$6.50; 1,000 bulbs, \$60.
- BLEU CELESTE.** 2. Bright violet-purple; inside dark violet-purple, with white base and blue halo; a handsome Tulip of large size and shapely form. Height 30 in. 10 bulbs, \$2.40; 100 bulbs, \$22.
- CARL BECKER.** 2. Soft rose, flushed salmon when opening; large flower with wonderful greenish blue base. A very handsome Darwin for the border and beautiful when forced, though paler in color. Height 30 in. 10 bulbs, 75 cts.; 100 bulbs, \$6.50; 1,000 bulbs, \$60.
- CENTENAIRE.** 1. Rich violet-rose, with large blue base—enormous flowers of perfect shape; a magnificent early Darwin for the border, and one of the best forcing varieties; Height 30 in. 10 bulbs, \$1.20; 100 bulbs, \$10.
- CITY OF HAARLEM.** 3. Intense dark scarlet, with darker bloom; large steel-blue base and white halo; wonderful cup-shaped flower, with petals incurving slightly at the tips. One of the finest brilliant red Darwins. Height 27 in. 10 bulbs, \$2.70; 100 bulbs, \$25.



- CLARA BUTT.** 4. Clear pink, flushed salmon-rose; inside much deeper, with blue base and white halo; good-sized flower of very handsome shape. A bright, clear color out-of-doors, and one of the best forcing varieties. Height 21 in. 10 bulbs, 55 cts.; 100 bulbs, \$4.50; 1,000 bulbs, \$40.
- CREPUSCULE.** 3. Lilac-white, with dark, rosy flush at tips of petals; large flower of good form and very beautiful when used for forcing. Height 28 in. 10 bulbs, 75 cts.; 100 bulbs, \$6.50.
- DAL ONGARO.** 4. Pale lavender-violet; inside dark bluish violet shading off into paler violet; large flower with pure white base and showy white midrib. Height 28 in. 10 bulbs, 65 cts.; 100 bulbs, \$5.50.
- DREAM.** 2. Pale heliotrope, with darker flush of heliotrope; inside deep violet, with blue base. Handsome in combination with the dark lavender and purple shades. Height 27 in. 10 bulbs, 60 cts.; 100 bulbs, \$5; 1,000 bulbs, \$46.
- DUCHESS OF HOHENBERG.** 2. Pale slaty lilac-mauve, with stripe of rosy heliotrope; inside pale lilac, with white base. Enormous, long flower on a tall, stiff stem. Height 29 in. 10 bulbs, \$1.60; 100 bulbs, \$14.
- DUKE OF PORTLAND.** 2. Bright cerise, changing with age to bright garnet, and blue base; a long, pointed flower of rich color. Height 26 in. 10 bulbs, \$1.80; 100 bulbs, \$16.
- ECLIPSE.** 2. Self-colored glowing blood-red, with steel-blue base. A huge flower of open form, often having an extra number of petals. The finest dark red Tulip. Height 25 in. 10 bulbs, \$2; 100 bulbs, \$18.
- EDMEE; syn., BEAUTY.** 4. Vivid shade of cherry-rose, edged soft old-rose; the brightest and strongest color in this type. Large flower of very great beauty. Handsome in the border and fine for late forcing. Height 25 in. 10 bulbs, 80 cts.; 100 bulbs, \$7; 1,000 bulbs, \$65.
- EDOUARD ANDRE.** 1. Lilac-white, with broad stripe of reddish violet; inside flushed reddish violet with blue and white base, and broad white midrib on inner petals. Height 26 in. 10 bulbs, 70 cts.; 100 bulbs, \$6.
- ERGUSTE.** 1. Pale heliotrope, flushed silvery white; inside dark violet with white base; medium-sized flower on tall stem. Splendid for borders and one of the best Darwins for forcing. Height 26 in. 10 bulbs, 70 cts.; 100 bulbs, \$6.
- ESATO.** 1. Bright blood-red, with rich purple bloom on outer petals; showy blue-black base starred white; open, cup-shaped flower of fine form. A very early variety for borders and fine for early forcing. Height 30 in. 10 bulbs, \$1; 100 bulbs, \$8.



- EUROPE.** 2. Glowing salmon-scarlet, shaded rose, with white base; medium-sized flower on strong stem. Very fine for borders and a splendid variety for pot culture. Height 22 in. 10 bulbs, 65 cts.; 100 bulbs, \$5.50; 1,000 bulbs, \$50.
- EUTERPE.** 2. Silvery mauve-lilac, edged paler lilac, white base with blue halo; a long flower of exquisite color and seen to best advantage when planted with a buff Breeder like Bronze Queen. A most useful lavender Darwin for every purpose. Height 28 in. 10 bulbs, 60 cts.; 100 bulbs, \$5; 1,000 bulbs, \$45.
- FANNY.** 1. Pale rosy pink, with white base marked blue; not a large flower but very attractive if a pale tone is wanted in the border. Splendid for early forcing. Height 25 in. 10 bulbs, 65 cts.; 100 bulbs, \$5.50.
- FAUST.** 2. Dark satiny purple-maroon, with blue base; very large flower of fine form and glistening sheen. The best of this color. Splendid for the border. Height 30 in. 10 bulbs, 85 cts.; 100 bulbs, \$7.50.
- FLAMINGO.** 4. A uniform, soft shell-pink; medium-sized, pointed flowers of most refined form. A Tulip of distinct color and unsurpassed beauty for border planting. Height 28 in. 10 bulbs, 85 cts.; 100 bulbs, \$7.50.
- FRAULEIN VON AMBERG.** 2. Dark violet, edged tawny gray; inside dull violet-purple, with white base; open flower of peculiar flattened form. The whole flower has a brownish cast, which changes the ground color in great degree. Height 30 in. 10 bulbs, \$1; 100 bulbs, \$8.
- GALATEA.** 4. Bright carmine-rose, with glistening blue base. A large flower of very glowing color, exceptionally brilliant in the bright sunlight. A wonderful border variety. Height 26 in. 10 bulbs, 85 cts.; 100 bulbs, \$7.50.
- GEORGE MAW.** 2. Deep carmine-rose, edged pale rose; inside bright rose, with white base marked blue. The petals have the unique habit of not opening wide, giving a rose-like appearance to the flower. A splendid Darwin for the border. Height 26 in. 10 bulbs, 80 cts.; 100 bulbs, \$7.
- GIANT.** 2. Deep reddish purple, shaded dark violet with white base and blue star; a very handsome flower of enormous size on long stem and of sturdy habit. Height 29 in. 10 bulbs, \$1.60; 100 bulbs, \$14.
- GLOW;** syn., **CLAUDE GILLOT.** 3. Dazzling, vermilion-scarlet, white base, with blue markings; good-sized flower of very distinct shape. A very handsome Tulip, like an oriental poppy in the dazzling glare of its color. Height 23 in. 10 bulbs, 65 cts.; 100 bulbs, \$5.50; 1,000 bulbs, \$50.



GRYPHUS. 2. Brilliant, dark violet-purple, with white base marked blue; large flower, beautifully formed, on long, graceful stem. A remarkably handsome flower. Height 26 in. 10 bulbs, \$1.20; 100 bulbs, \$10.

GUDIN. 4. Pale slaty lilac, edged creamy white; inside pale lilac, flushed white with yellowish base and blue halo; long, handsome flower on a stiff stem. Height 27 in. 10 bulbs, 70 cts.; 100 bulbs, \$6.

GUSTAVE DORE. 4. Soft pink, edged silvery rose, with white base and striking white midrib; long flower on graceful stem. Very handsome for pots. Height 25 in. 10 bulbs, 70 cts.; 100 bulbs, \$6; 1,000 bulbs, \$55.

HARRY VEITCH. 2. Rich blood-red, with brighter edge and blue base; very brilliant in the sunlight; medium-sized flower. Very fine for borders and an early sort for forcing. Height 23 in. 10 bulbs, 65 cts.; 100 bulbs, \$5.50; 1,000 bulbs, \$50.

ISIS. 3. Fiery crimson-scarlet with blue base and white halo; very large flower of striking beauty. A variety of the most intense color. Showy for borders or among shrubbery, and extra fine for forcing. Height 26 in. 10 bulbs, 70 cts.; 100 bulbs, \$6.

JOHN MALCOLM. 2. Smoky lavender-rose, shaded pale French purple; white base with blue halo. Large flower artistically blended tones. Height 23 in. 10 bulbs, 85 cts.; 100 bulbs, \$7.50.

JUBILEE. 3. Bright blue-purple, slightly paler at the edges, with white base marked blue. Huge flower of superb, open form and rich color, with splendid lasting qualities. The finest Darwin of this color. Height 29 in. 10 bulbs, \$1.60; 100 bulbs, \$14.

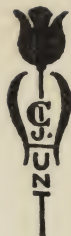
KING GEORGE V. 2. Glowing salmon-scarlet, shaded bright rose; inside brilliant orange-scarlet with blue base. A flower of immense size, splendid stem and intense color for outdoors. Height 25 in. 10 bulbs, \$5; 100 bulbs, \$45.

KING HAROLD. 3. Deep oxblood red, with purple-black-base; large flower of fine form, on a sturdy stem. Superb variety for the border, and most effective in partial shade. Height 24 in. 10 bulbs, 65 cts.; 100 bulbs, \$5.50; 1,000 bulbs, \$50.

LA CANDEUR; syn., WHITE QUEEN. 2. Almost pure white when mature, at first tinged pale rose; with effective black anthers; medium size. Fine for borders or pots. Height 24 in. 10 bulbs, 60 cts.; 100 bulbs, \$5; 1,000 bulbs, \$45.



- LA FIANCEE.** 2. Deep rose, shading to old-rose and delicate pink at edges, with blue base. Handsome large flower on a tall, straight stem. Very effective with mauve and dark lavender varieties. Height 30 in. 10 bulbs, \$3.20; 100 bulbs, \$30.
- LA TRISTESSE.** 3. Dull slaty violet with white base; large flower; a Tulip of very distinct color. Handsome in combination with the primrose sorts among the Cottage Tulips. Height 26 in. 10 bulbs, 65 cts.; 100 bulbs, \$5.50; 1,000 bulbs, \$50.
- LA TULIPE NOIRE.** 3. Very dark maroon-black, the blackest of all the Tulips, having a velvety sheen in the sunlight; large flower. Height 25 in. 10 bulbs, 80 cts.; 100 bulbs, \$7.
- L'INGENUE.** 2. Rosy white, with broad stripe of dull old-rose through center of petal, white base and blue halo; very large tall flower. Fine for the border. Height 27 in. 10 bulbs, 80 cts.; 100 bulbs, \$7.
- LOUISE DE LA VALLIERE.** 3. Brilliant cherry-rose, with blue base starred white. A very clear color and a magnificent Tulip of beautiful form. Height 24 in. 10 bulbs, \$2.60; 100 bulbs, \$24.
- LOUISIANA.** 3. Dark purplish maroon, with slightly paler edge; black base. An open flower of fine size and form, and distinct in color. Height 29 in. 10 bulbs, \$1; 100 bulbs, \$8.
- MADAME BARROIS.** 3. Soft old-rose, with pale rose margin, changing to pale flesh-white; bluish base. A fine Darwin of delicately beautiful color and most attractive form. Height 25 in. 10 bulbs, \$1.80; 100 bulbs, \$16.
- MADAME KRELAGE.** 2. Bright lilac-rose, margined pale silvery rose; inside soft rose-pink; very long flower of remarkably handsome form. A superb variety for borders and one of the best for pots. Height 28 in. 10 bulbs, 70 cts.; 100 bulbs, \$6; 1,000 bulbs, \$55.
- MADAME RAVEN.** 3. Dark cherry-rose, edged soft rosy white; white base, blue halo; medium-sized flower of perfect shape. A variety of the same general character as Edmee or Madame Krelage, but with sharper contrast between the dark rose and almost clear white edge. Height 25 in. 10 bulbs, \$1; 100 bulbs, \$8.
- MARCONI.** 3. Blue-purple, with maroon shading on opening changing to ashy purple with age; white base. Unusually large flower, a most useful moderate-priced dark Tulip. Height 27 in. 10 bulbs, 65 cts.; 100 bulbs, \$5.50; 1,000 bulbs, \$50.



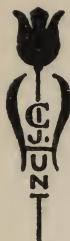
- MARGARET**; syn., **GRETCHEN**. 3. Silvery pale rose, flushed white, inside soft pink, with white base marked blue; large, globular flower on stiff stalk. A flower of delicate color. Extra fine for forcing. Height 22 in. 10 bulbs, 55 cts.; 100 bulbs, \$4.50; 1,000 bulbs, \$40.
- MARNIX VON ST. ALDEGONDE**. 3. Dull cerise, when opening edged orange; inside bright orange salmon, with pure white base. A cup-shaped flower of medium size and novel color among the Darwins. Height 25 in. 10 bulbs, \$1.30; 100 bulbs, \$11.
- MASSACHUSETTS**. 2. Vivid pink, edged rosy white, with tawny hue toward the white base; large flower of beautiful color and form. Superb for outdoor planting. Height 26 in. 10 bulbs, 70 cts.; 100 bulbs, \$6; 1,000 bulbs, \$54.
- MASSENET**. 3. Opening deep rose with edge of paler rose, fading to pale rose, with broad margin of creamy white; inside creamy white, with triangular base of deep, bright blue, edged violet. Height 30 in. 10 bulbs, \$1.20; 100 bulbs, \$10.
- MATTIA**. 1. Clear rosy-carmine, with blue base; very large and beautifully shaped flower; sweet-scented. A wonderful Tulip for borders, holding its color to the end. Height 24 in. 10 bulbs, 80 cts.; 100 bulbs, \$7.
- MAUVE CLAIR**. 3. Soft lilac-mauve, slightly paler at edges of petals; inside lilac-mauve with white base. Height 26 in. 10 bulbs, 65 cts.; 100 bulbs, \$5.50.
- MAY QUEEN**; syn., **ARENTE ARENSEN**. 3. Deep lilac-rose, with white base, marked blue; very long, large flower. One of the handsomest Darwins of this color. Height 26 in. 10 bulbs, 60 cts.; 100 bulbs, \$5; 1,000 bulbs, \$44.
- MELICETTE**. 3. Soft lavender; inside dark lavender-violet, shading to pale lavender at edges, with beautiful blue base. The purest lavender Darwin; large flower with reflexing outer petals. Height 25 in. 10 bulbs, 85 cts.; 100 bulbs, \$7.50.
- MISS GOVERNY**. 2. Dull old-rose, changing to soft old-rose as the flower ages; medium-sized flower of beautiful form with white base. A very beautiful Darwin for planting in partial shade. Height 26 in. 10 bulbs, \$1.80; 100 bulbs, \$16.
- MISS HELEN UNDERWOOD**. 3. Pale lavender-mauve, with whitish base. A beautiful flower of uniform soft color; most effective in partial shade. Height 25 in. 10 bulbs, \$1; 100 bulbs, \$8.
- MR. FARNCOMBE SANDERS**. 2. Scarlet, with rosy bloom; inside vivid cerise-scarlet with white base; large, broad-petaled flower of perfect shape. One of the best sorts, if not the best, among the reds, either for borders or forcing. Height 25 in. 10 bulbs, 70 cts.; 100 bulbs, \$6; 1,000 bulbs, \$55.



- MRS. CLEVELAND. 3. Soft flesh-white, suffused old-rose; inside pale old-rose, with blue base; a flower of good size and very delicate coloring. Splendid for borders in partial shade. Height 24 in. 10 bulbs, 65 cts.; 100 bulbs, \$5.50; 1,000 bulbs, \$50.
- MRS. STANLEY. 3. Silvery purple-rose of a very bright, clear shade, edged rose-pink, blue base; large, long flower. Of great value for bedding or pot culture. Height 25 in. 10 bulbs, 75 cts.; 100 bulbs, \$6.50; 1,000 bulbs, \$60.
- NAUTICAS. 2. Silky carmine rose, base dark violet shaded bronze; large flower; a very handsome Tulip for outdoors, and splendid for early or late forcing. Height 30 in. 10 bulbs, 65 cts.; 100 bulbs, \$5.50; 1,000 bulbs, \$50.
- OLIFANT. 1. Smoky lavender of very silvery character, with distinct blue flush on outer petals; pure white base; huge flower on very tall stem. One of the earliest Darwins to open. Height 32 in. 10 bulbs. \$5.
- ORANGE PERFECTION. 3. Brilliant salmon-orange when first opening, shaded scarlet with age, and bright blue base; large flower of most intense color. Splendid for borders or among evergreens. Height 26 in. 10 bulbs, \$4; 100 bulbs, \$36.
- OUIDA. 2. Crimson-scarlet, with slight purplish bloom, and white base starred dull blue; a huge flower of brilliant color, valuable for massing in the border. Height 29 in. 10 bulbs, 60 cts.; 100 bulbs, \$5; 1,000 bulbs, \$45.
- PAINTED LADY. 3. Creamy white, faintly tinged soft heliotrope when opening; good-sized flower on dark stem; a very beautiful flower; the best moderate-priced white Darwin for outdoors or late forcing. Height 27 in. 10 bulbs, 60 cts.; 100 bulbs, \$5; 1,000 bulbs, \$45.
- PALISA. 2. Brilliant garnet-purple, with reddish glow, white base with blue star. A unique color seen best in the sunlight. Height 29 in. 10 bulbs, 65 cts.; 100 bulbs, \$5.50; 1,000 bulbs, \$50.
- PAUL EUDEL. 4. Soft violet, edged lilac-white; inside lilac-white, deepening toward the white base; large flower of strong growth. Height 26 in. 10 bulbs, 70 cts.; 100 bulbs, \$6.
- PENSEE AMERE. 3. Slaty violet, with broad flush of rosy lilac; inside deeper lilac, with white base. Egg-shaped flower of medium size. Height 26 in. 10 bulbs, 70 cts.; 100 bulbs, \$6; 1,000 bulbs, \$55.
- PETRUS HONDIUS. 2. Bright carmine-rose, with dull blue base starred white. An unusually brilliant variety in this color even when planted in the shade. Height 28 in. 10 bulbs, \$1; 100 bulbs, \$8.50.



- PLUMBAGO.** 3. Pale silvery lavender, shaded almost blue at margins; inside lavender with blue base; large flower of delicate color and noticeable blue tone. Height 30 in. 10 bulbs, \$1.80; 100 bulbs, \$16.
- PRESIDENT HARDING.** 3. Purple, edged and shaded reddish lilac; inside slightly deeper in tone with white base. A large, cup shaped flower of novel color. Height 27 in. 10 bulbs, \$5.
- PRIDE OF HAARLEM.** 1. Brilliant rosy carmine, with blue base; very large flower of superb form, borne on tall, strong stem; sweet-scented; Unsurpassed for borders, and a sure and early forcing Darwin. Height 25 in. 10 bulbs, 60 cts.; 100 bulbs, \$5; 1,000 bulbs, \$46.
- PRINCE OF THE NETHERLANDS.** 3. Glowing cerise-scarlet, edged rose, with blue base, and showy white midrib; extra-large flower of vigorous habit. A flower of striking color and great size, carried on a tall stem; splendid for forcing. Height 31 in. 10 bulbs, \$1; 100 bulbs, \$8.50.
- PRINCE OF WALES.** 1. Very bright rosy crimson with scarlet flush and bright blue base; a very tall, enormous flower of remarkably brilliant tone. Height 28 in. Single bulb, \$1.
- PRINCESS ELIZABETH.** 2. Beautiful clear deep pink, changing with age to rose-pink, white base. Large flower of perfect shape, quite like a rose when first open. Splendid for border planting. Height 26 in. 10 bulbs, \$1.20; 100 bulbs, \$10.
- PRINCESS JULIANA.** 3. Orange-scarlet, flushed salmon; inside vivid scarlet, with blue base starred white. A color of dazzling brilliancy. Height 24 in. 10 bulbs, 75 cts.; 100 bulbs, \$6.50.
- PRINCESS MARY.** 3. Bright carmine-rose, with margin of rose-pink; inside clear carmine-rose with blue base and white halo; huge flower on a splendid stem. One of the finest of the new Darwins, and a magnificent variety for any purpose. Height 28 in. Single bulb, \$1.50.
- PROFESSOR FRANCIS DARWIN.** 2. Crimson-scarlet, with blue base, a color unique among the reds; large flower of bold character. Splendid for borders. Height 22 in. 10 bulbs, 60 cts.; 100 bulbs, \$5; 1,000 bulbs, \$44.
- PROFESSOR RAUWENHOF.** 3. Bright cherry-red, with scarlet glow inside and remarkably brilliant blue base; enormous flower of great substance on a strong stem. Superb for borders. Height 28 in. 10 bulbs, 80 cts.; 100 bulbs, \$7.
- PSYCHE.** 1. Silvery rose, edged soft rose; inside shaded silvery rose with pale blue base; large, handsome flower on a somewhat drooping stem. Very beautiful for borders. Height 26 in. 10 bulbs, 60 cts.; 100 bulbs, \$5; 1,000 bulbs, \$45.



PURPLE PERFECTION. 2. Glossy claret-purple; large, broad-petaled flower, lasting long in condition. A variety of very great beauty for outdoors. Height 23 in. 10 bulbs, 80 cts.; 100 bulbs, \$7.

QUEEN MARY. 2. Deep cherry rose shading to deep rose; inside brilliant salmon-pink, with bright blue base; a large flower of very clear color. Effective in any outdoor situation. Height 27 in. 10 bulbs, \$1.20; 100 bulbs, \$10.

RAPHAEL. 2. Deep maroon-purple of rich tone, with blue base starred white. Very tall, big flower of sturdy character. The best reddish purple. Height 30 in. 10 bulbs, 85 cts.; 100 bulbs, \$7.50.

REMEMBRANCE. 2. Pale slaty lilac, of a peculiar silvery tone, with flush of dull violet; inside dull violet, flushed brown at base. A large and handsome variety. Height 25 in. 10 bulbs, 70 cts.; 100 bulbs \$6.

REVEREND EWBANK. 2. Soft lavender-violet, with silver-gray flush, darkening toward the white base; good-sized flower of remarkably beautiful color. Fine for borders. Height 22 in. 10 bulbs, 55 cts.; 100 bulbs, \$4.50; 1,000 bulbs, \$40.

REVEREND HARPUR CREWE. 2. Dull amaranth-red, edged rose; inside brilliant crimson-carmine, with blue base; similar in color to Centenaire, but longer and more slender. Fine for outdoors. Height 25 in. 10 bulbs, 85 cts.; 100 bulbs, \$7.50.

ROI D'ISLANDE. 3. Soft old-rose, with narrow whitish border; inside soft violet-rose with blue base; a large flower of perfect shape and strong growth. A color not found in other Darwins and very beautiful grown in partial shade. Height 22 in. 10 bulbs, \$1.40; 100 bulbs, \$12.

RONALD GUNN. 2. Deep bluish violet, edged light lavender, white base marked blue. A superb variety, showing a shade of blue found in no other Darwin. Fine for the border and magnificent when forced. Height 26 in. 10 bulbs, 75 cts.; 100 bulbs, \$6.50.

SANCHIA. 3. Pale rose-pink, shading to pale flesh-pink at edges of petals; inside blush pink, with very large white base; flower of medium size, with strong stem. This is a very lovely type of the softer pink Darwins, and most attractive because of its white center. Offered only in The Blue Book. Height 28 in. 10 bulbs, 85 cts.; 100 bulbs, \$7.50.

SIR TREVOR LAWRENCE. 1. Violet-maroon, with flush of ashy purple; inside violet-maroon with white base; very large, cup-shaped flower, on tall stem. Splendid in every respect. Height 33 in. 10 bulbs, \$1; 100 bulbs, \$8.50.



SOPHROSYNE. 2. Soft lilac-rose, edged silvery white; inside deep rose, with striking dull blue base. A very large flower of very delicate beauty. Height 29 in. 10 bulbs, 80 cts.; 100 bulbs, \$7.

SPRING BEAUTY. 2. Clear scarlet, with blue-black base and white star; large flower of most refined form, and the handsomest of all scarlet-red Tulips. Height 23 in. 10 bulbs, \$1; 100 bulbs, \$8.50.

SUZON. 2. Soft buff-rose, shading to blush at margin of petals; inside deep rose, with white base marked blue; large, erect flower. Very handsome in the border. Height 25 in. 10 bulbs, 65 cts.; 100 bulbs, \$5.50; 1,000 bulbs, \$50.

SYLVIA; syn., TAUNUS. 2. Bright cerise; very tall big flower with white base and blue halo. Height 28 in. 10 bulbs, \$1.30; 100 bulbs, \$11.

THE BISHOP. 3. Soft bluish heliotrope, with ashy bloom; inside deep heliotrope with blue base; a large, round flower of wonderful substance, size and most unusual color. The purest heliotrope of any of the Darwins. Height 28 in. 10 bulbs, \$2.60; 100 bulbs, \$24.

VALENTIN. 1. Soft heliotrope, shaded light violet; inside heliotrope with blue base; long, large flower, gracefully carried on tall stem. A magnificent Tulip both for outdoors and for forcing. Height 22 in. 10 bulbs, 85 cts.; 100 bulbs, \$7.50; 1,000 bulbs, \$70.

VENUS. 3. Deep lilac rose of silvery shade; inside clear rose with white base. A large flower of very pleasing color. Height 30 in. Single bulb, \$2.50.

VIKING. 4. Deep violet, shading at edges of petals to delicate lavender; inside violet; flushed brown, with blue base; a large, open flower of exquisite beauty and especially beautiful with purple varieties. Height 27 in. 10 bulbs, 70 cts.; 100 bulbs, \$6; 1,000 bulbs, \$55.

VILLAGE MAID. 1. Soft old-rose with whitish base. A very large cup-shaped flower on a tall stem. Height 30 in. 10 bulbs, \$1; 100 bulbs, \$8.50.

WALLY MOES. 3. Pale lavender, penciled, when opening, with rosy lilac, like German iris Mme. Chereau; inside dark lavender, flushed rose, with white base; good-sized flower of delicate beauty. Height 24 in. 10 bulbs, 75 cts.; 100 bulbs, \$6.50.

WASHINGTON; syn., DAUBIGNY. 2. Rich carmine-rose, with white base, marked blue; very large and striking flower. Height 28 in. 10 bulbs, 65 cts.; 100 bulbs, \$5.50.



WHISTLER. 3. Brilliant, transparent crimson, with beautiful purplish bloom over outer petals; inside clear crimson-red with blue base. A very showy Tulip for borders. Height 24 in. 10 bulbs, 80 cts.; 100 bulbs, \$7.

WILLIAM COPLAND; syn., SWEET LAVENDER. 1. Rosy lilac; not a large flower but of merit because under glass it may be brought into flower as easily as the early Tulips, while the color becomes a most beautiful lavender. Height 25 in. 10 bulbs, 80 cts.; 100 bulbs, \$7.

WILLIAM PITT. 2. Very dark crimson, with purplish bloom on the outer petals and white base starred blue; large flower of distinct color and great beauty. Fine for borders and for forcing. Height 22 in. 10 bulbs, \$1.20; 100 bulbs, \$10.

YOLANDE; syn., DUCHESS OF WESTMINSTER. 2. Soft rose; inside brilliant salmon-rose with yellowish base; good-sized flower of wonderful color on a tall stem. Height 27 in. 10 bulbs, \$2; 100 bulbs, \$18.

ZANZIBAR. 2. Glossy maroon-black, with blue base starred white; fine, open flower of good substance and size. An early dark variety. Height 24 in. 10 bulbs, 80 cts.; 100 bulbs, \$7.

ZULU. 2. Rich, velvety purple-black, with shining purple edge; large, egg-shaped flower, with pointed petals. Fine for the border and splendid in pots. Height 27 in. 10 bulbs, 65 cts.; 100 bulbs, \$5.50.

ZWANENBERG. 3. Pure white with black anthers. A large substantial flower and the best pure white Darwin yet introduced. Height 28 in. Single bulb, \$1.50.

Rembrandt Tulips

Certain broken Darwins are now classed as Rembrandt Tulips, and the best varieties seem likely to attain a moderate share of the popularity which all the Late Tulips now enjoy. For garden purposes these striped forms have an oddity of character in which there are positive decorative possibilities. If kept by themselves, or used with the rose and violet Bybloems, in the seclusion of some hedging or evergreens, and planted in groups of about twenty-five bulbs, the Rembrandts will prove to retain the quaint fascination which they must have had in the bygone days, when the passion for these broken forms ruled in the old gardens of northern France. Several varieties are well adapted to pot culture, though it is probable that they will appear to best advantage in outdoor situations.

Detailed planting directions are included with the shipment of the bulbs.



The figure following the name indicates the relative time of flowering.

Prices of all varieties, 10 bulbs, 85 cts.;
100 bulbs, \$7.50.

APOLLO; syn., JUDAS. 2. Rosy violet, striped and feathered bright maroon, occasionally flaked white, white base; large flower of handsome markings and distinct shape. Height 23 in.

BOUGAINVILLE. 2. Pale rosy lilac, broadly striped deep violet and flaked maroon; fine, large flower of distinct markings. Height 26 in.

BUTTERFLY. 3. Soft lilac, striped deep carmine; medium-sized flower. Height 20 in.

CARACALLA. 3. White, flamed and feathered carmine-red; a good deal of white makes the flower light up well; good-sized flower. Height 21 in.

CRIMSON BEAUTY. 2. Dull maroon-red, flaked darker red with splashes of white along edges of petals; medium-sized flower. Height 20 in.

EROS. 3. Soft lilac, feathered dark violet; medium-sized flower. A good border variety. Height 25 in.

JULIENNE. 3. Old-rose, striped and flaked carmine-purple and white; a good-sized flower, with white base marked blue. A very handsome Rembrandt. Height 23 in.

LA COQUETTE. 2. Violet, flamed dark purple and white; medium-sized flower. Very handsome for pots. Height 20 in.

MARCO SPADO. 3. White, flamed bright carmine-red; large flower of fine markings. Height 22 in.

PROCLE. 2. White, with broad flames of dark maroon and violet-purple; a long flower of beautiful shape. One of the most evenly marked of all the Rembrandt Tulips. Height 25 in.

QUASIMODO. 2. White, feathered and striped bright crimson; large flower. Height 23 in.

ROSY GEM. 3. Rosy lilac, striped and feathered carmine-red and white, with a splash of white at tips of petals; good-sized flower of most delicate beauty. Height 24 in.

SEMELE. 2. White, heavily striped and feathered dull old-rose, with white base starred blue-green. A Tulip of very quaint, old-fashioned effect, like a piece of old Colonial china. Height 25 in. ✓



THETIS. 3. White, with broad flame through center of petal and tiny flecks of bright red; white base starred blue. A very showy variety of sturdy habit. Height 20 in.

TITANIA. 2. White ground, striped and flamed rosy violet and bright amaranth-red, a fairly large flower of very clean color. Height 23 in.

VESTA. 3. Very pale gray-violet ground, lightly feathered and flaked white and maroon-purple; slaty blue base. Height 22 in.

VICTOR HUGO. 2. Brilliant carmine-red, feathered and flamed white; large flower. Fine for outdoors, or late pot culture. Height 24 in.

ZENOBIA. 2. White ground flushed lilac and striped velvety maroon. Fine for the border. Height 21 in.

Breeder Tulips

The Breeders are unbroken forms of the old-time florists' Tulip, the race which has held the favor of the English fanciers for over a century. From them, as the name implies, are derived the "rectified" forms classed as Bybloems and Bizarres. Breeders are of vigorous growth and have characteristic, large, self-colored flowers (generally dull-toned or bronze-shaded); many of them are deliciously scented. They are especially valuable Tulips for the garden, in spite of the neutral shades, as they possess such refined colors and such artistic blending of tones that it is impossible not to admire their somber beauty. In size and height they frequently surpass even the largest and tallest Darwins.

No better advice can be given to the lover of the Tulip than to make the acquaintance of this handsome race. Colors without a counterpart in any other class of Tulips are to be found among them, as well as combinations of color which can scarcely be imagined by one who does not know the possibilities of the Breeders. Their quiet tones, in contrast with the livelier colors of the Cottage and Darwin kinds, give a comforting feeling of repose which everyone who is sensitive to garden atmosphere so often requires of his garden flowers.

When we first introduced the Breeder Tulips to the American public, they were comparatively unknown, but the enthusiastic approval shown in our trials has induced us to search throughout Holland to obtain a complete selection of these fascinating Tulips, with the result that the following list contains many strangely beautiful varieties that cannot be obtained elsewhere.

Detailed planting directions are included with the shipment of the bulbs.



A Set of Breeder Tulips of Moderate Cost

TO give the keen gardener an idea of how attractive the Breeder Tulips can be we recommend the following ten varieties—all good and not expensive.

Order Recommendation GG

Ten bulbs of each for \$7.55

ALCIDA	GROOTE SAMSON
BRONZE QUEEN	LE MOGOL
CARDINAL MANNING	MADRAS
CHESTNUT	MON TRESOR
GOLDEN BRONZE	MOODY

And another consisting of

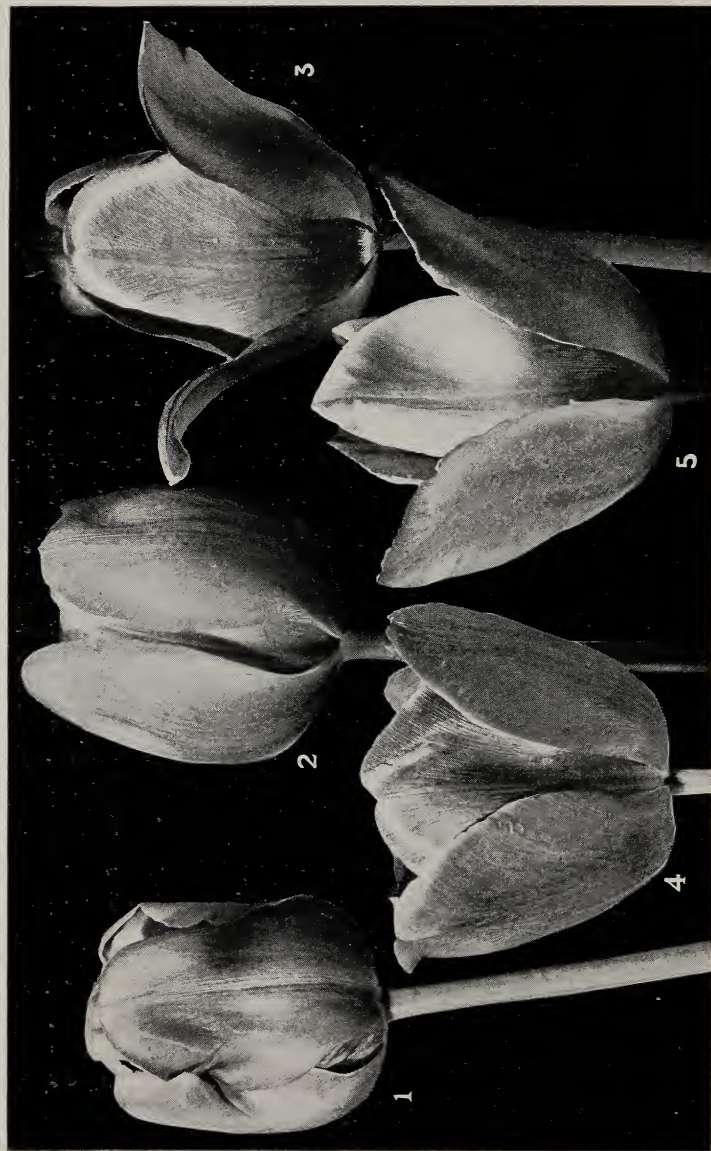
Rare and Unusual Types

The choice and rarely beautiful things among this interesting class of Tulips.

Order Recommendation HH

Ten bulbs of each for \$17.15

APRICOT	GOLDFINCH
BACCHUS	LOUIS XIV
CHESTER JAY HUNT	PALADIN
COPERNICUS	SALOMON
GARIBALDI	ST. JAMES



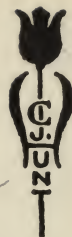
1—St. James

4—Godet Parfait

2—Goldfinch

5—Garibaldi

3—Heloise



The figure following the name indicates the relative time of flowering

ABD-EL-KADER. 3. Dull, bronze-yellow, shading to light bronze at edge of petals; inside bronze-brown, with olive-green base; good-sized flower. A splendid variety to use with other bronze and brown Breeders. Height 26 in. 10 bulbs, \$1.60; 100 bulbs, \$14.

ADELINA PATTI. 2. Self-colored French purple with lighter bloom; huge flower of loose, open form; white base and brilliant blue star. One of the largest Breeders in our collection. Height 31 in. 10 bulbs, \$1.60; 100 bulbs, \$14.

ALCIDA. 2. Light bronze, edged golden yellow which, with age, becomes soft primrose-yellow, a medium-sized flower of clear tone, with fine green base. Height 25 in. 10 bulbs, 75 cts.; 100 bulbs, \$6.50.

APRICOT. 3. Ruddy apricot, edged bronzy buff, with yellow base and olive halo. A large flower on strong stem, tending to be double when large bulbs are planted. Height 25 in. 10 bulbs, \$1.20; 100 bulbs, \$10.

BACCHUS; syn., RASONIA. 3. Dark violet-blue, with darker bloom on outside of petals; inside violet-blue, with white star at base; the nearest approach to dark blue in the late Tulips; large, long flower. Height 28 in. 10 bulbs, \$1.80; 100 bulbs, \$16.

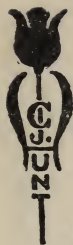
BRONZE QUEEN; syn., BISCUIT; CLIO. 4. Soft buff, shaded bronze; inside tinged golden bronze, with yellow base; large flower of sturdy habit. Very fine out-of-doors, and of a most refined color when forced. Height 28 in. 10 bulbs, 65 cts.; 100 bulbs, \$5.50; 1,000 bulbs, \$50.

CARDINAL MANNING; syn., GOLIATH; KINGSCOURT. 4. Dull wine-red, flushed rosy bronze, changing to rosy violet, shaded bronze. A very large flower. Height 30 in. 10 bulbs, 65 cts.; 100 bulbs, \$5.50; 1,000 bulbs, \$50.

CHARLES DICKENS. 2. Dark crimson-rose, with white base very large, egg-shaped flower. A splendid variety. Height 22 in. 10 bulbs, \$1.20; 100 bulbs, \$10.

CHERBOURG. 3. Brilliant amber yellow, slightly flushed apricot toward the base. A very large, cup-shaped flower on a tall stem. Single bulb, \$2.

CHESTER JAY HUNT. 1. Opening reddish violet, with white base, soon changing to blue-purple with ashy bloom; a loosely formed, large flower of most graceful habit and exquisite color. Height 28 in. 10 bulbs, \$2; 100 bulbs, \$18.



CHESTNUT. 3. Chestnut-brown, with faint purplish bloom; inside deep mahogany, with black base starred yellow; a variety of very distinct color. Height 24 in. 10 bulbs, 65 cts.; 100 bulbs, \$5.50; 1,000 bulbs, \$50.

COPERNICUS. 3. Light coffee-brown, with slight flush of bronzy old-rose; inside warm brown, with yellow base. A large flower on sturdy stem. A fine example of the brown Breeders. Height 27 in. 10 bulbs, 85 cts.; 100 bulbs, \$7.50.

CORIDION. 1. Clear yellow, overlaid with stripe of lilac through center of petals. A flower of very clear color among the Breeders. Fine for shrubberies. Height 24 in. 10 bulbs, \$1.70; 100 bulbs, \$15.

DOM PEDRO. 3. Coffee-brown, with very narrow edge of golden brown; inside dark reddish mahogany, olive base; large fragrant flower. Superb when planted with lighter Breeders. Height 24 in. 10 bulbs, \$1.20; 100 bulbs, \$10.

DRYAD. 2. Lilac-old-rose, margined bronzy yellow, shading to buff with age; broader margin inside with bright apple-green base. A flower of very distinct character. Height 22 in. 10 bulbs, \$2; 100 bulbs, \$18.

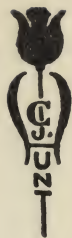
GARIBALDI. 2. Pale lilac-bronze, broadly edged soft primrose-yellow; inside bronze tinged primrose. A long flower of beautiful reflexing form on a very tall stem. One of the finest Breeders ever introduced into our list. Height 31 in. 10 bulbs, \$1.80; 100 bulbs, \$16. See illustration.

GENERAL NEY. 3. Dull old-gold, with olive base; a good-sized flower of soft color. Height 25 in. 10 bulbs, 85 cts.; 100 bulbs, \$7.50.

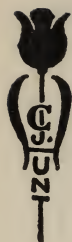
GLORIA. 2. Dull dark lilac, edged soft amber-yellow; inside bronzy lilac with large yellow base. Medium-sized flower of beautiful and distinct coloring. Height 21 in. 10 bulbs, \$1; 100 bulbs, \$8.50.

GODET PARFAIT. 3. Dark blue-purple, with white base and blue halo; very large flower of striking color. One of the best Breeders for the border. Height 30 in. 10 bulbs, \$1.50; 100 bulbs, \$13. See illustration.

GOLDEN BRONZE; syn., TOISON D'OR. 3. Light brownish yellow, with faint flush of heliotrope outside; deep mahogany-brown within, shading to golden brown at tip of petals, yellow base. The general effect at a distance is a bright yellow-brown. Height 24 in. 10 bulbs, 85 cts.; 100 bulbs, \$7.50.



- GOLDFINCH**; syn., **GOUDVINK**. 2. Golden brown, with dull lilac flush through center of petals; inside mahogany-brown, edged golden brown, yellow base starred olive. Large, pointed flower on tall, stiff stem. Height 29 in. 10 bulbs, \$2; 100 bulbs, \$18. See illustration.
- GOLDFINDER**; syn., **CYCLOPS**. 2. Bright crimson, flushed orange, with yellow base. An English Breeder of exceptionally vivid color. Height 26 in. 10 bulbs, 85 cts.; 100 bulbs, \$7.50.
- GRIS-DE-LIN PALE**. 4. Rosy lilac, penciled and edged a brighter tone; large, pure white base. Distinct because of the delicate penciling rarely found in the Tulips. Height 24 in. 10 bulbs, 85 cts.; 100 bulbs, \$7.50.
- GROOTE SAMSON**. 4. Dark violet with edge of bright bronze-yellow, and purple bloom; inside dull lilac-bronze with greenish blue base starred yellow. A flower of very soft color for planting with the paler Darwins. Height 25 in. 10 bulbs, 80 cts.; 100 bulbs, \$7.
- HAMLET**. 3. Dull coffee-brown, with faint flush of rosy purple through center of petals; inside dark brown with yellow base; a flower of good size, with slightly reflexing outer petals. A distinct color and splendid for contrast with the paler late Tulips. Height 26 in. 10 bulbs, 85 cts.; 100 bulbs, \$7.50.
- HELOISE**. 1. Van Dyck brown, shaded old-rose; inside Van Dyck brown, edged plum, with yellow base marked olive-green; large, reflexing flower of wonderful color and form. Height 28 in. 10 bulbs, \$2; 100 bulbs, \$18. See illustration.
- INDIAN CHIEF**. 2. Reddish mahogany flushed purple, edged warm brown with age; yellow base. A huge flower of wonderful substance and most artistic shape, carried on a very tall stem. Height 33 in. Single bulb, 75 cts.; 10 bulbs, \$5.
- JAMES WATT**. 3. Black-purple, edged rich, dark brown, with ashy bloom; inside purple, shading to brown at edges, with wonderful green base starred white. A rather small, round flower of a color seen in no other variety. Height 24 in. 10 bulbs, \$2.40; 100 bulbs, \$22.
- JAUNE D'OEUF**. 3. Lively yellow, with broad stripe of lilac; inside golden bronze, with dark apple-green base; splendid, large flower of distinct shape, on a tall stem. Height 26 in. 10 bulbs, 70 cts.; 100 bulbs, \$6; 1,000 bulbs, \$55.
- JULES FAVRE**. 3. Warm brown, with purple flush in center of petals; inside reddish brown, with dark green base. With age the flower has a noticeable yellow-brown edge. Good-sized, cup-shaped bloom. Height 27 in. 10 bulbs, 85 cts.; 100 bulbs, \$7.50.



- JUPITER.** 3. Soft violet-maroon, flushed rosy violet at edges; large, white base. A huge flower with wavy petals of silky texture, especially beautiful as it ages. Height 30 in. 10 bulbs, \$4.
- LA JOYEUSE.** 3. Silvery gray, flushed lilac, with narrow heliotrope edge; good-sized flower. A very lovely variety for borders. Height 26 in. 10 bulbs, \$3; 100 bulbs, \$28.
- LA SINGULIERE;** syn., **LORD CURZON.** 3. Opening silvery white, heavily flushed and flaked with dark maroon-crimson, with age the color tinges the whole flower; very large. Height 25 in. 10 bulbs, 85 cts.; 100 bulbs, \$7.50.
- LA TURQUOISE.** 2. Bronze-brown, with apricot flush and broad yellow edge and greenish base; a round flower of an unusual combination of colors. Height 28 in. 10 bulbs, \$2; 100 bulbs, \$18.
- LE MOGOL.** 3. Pale lavender-mauve, flushed white; inside deep mauve-lilac, with beautiful white base and blue halo. A flower of medium size but of exquisite color. Height 26 in. 10 bulbs, 85 cts.; 100 bulbs, \$7.50.
- LORD COCHRANE.** 4. Soft golden brown, with narrow margin of amber yellow; inside warm brown with yellow base. A distinct flower because of the clear shade of yellow on the margin and a peculiar lilac bloom on the outside of the flower. Height 28 in. 10 bulbs, \$1.70; 100 bulbs, \$15.
- LOUIS XIV.** 3. Dark purple, flushed bronze, with broad margin of golden brown; very large, globular flower, with green-black base starred yellow. The most wonderful Tulip in existence. Height 28 in. 10 bulbs, \$2; 100 bulbs, \$18.
- LUCIFER.** 5. Dark orange, with rosy bloom and scarlet-orange edge; inside scarlet-orange, with yellow base and olive halo; enormous flower on tall stem. Height 28 in. 10 bulbs, \$2; 100 bulbs, \$18.
- MABEL.** 2. Cerise-pink with white flush through center of petals; inside brilliant cerise-pink with pure white base. Not a large flower but a most lovely pure color. 10 bulbs, \$1.80 100 bulbs, \$16.
- MADAME LETHIERRY.** 2. Dark crushed strawberry, edged and flushed salmon, a unique color; medium size, very distinct form, and a variety of great beauty when grown in partial shade. Height 26 in. 10 bulbs, \$1; 100 bulbs, \$8.50.
- MADRAS.** 3. Golden bronze, with dull heliotrope stripe on outer petals, yellow base starred green; long, good-sized flower, loosely built. Height 26 in. 10 bulbs, 85 cts.; 100 bulbs, \$7.50.



MARECHAL VICTOR. 3. Pale lavender-violet, with broad edge of buff shaded bronze; inside violet faintly flushed mahogany with beautiful green base; a flower of open, graceful form. A wonderful color combination which we have seen in no other Tulip. Height 28 in. 10 bulbs, \$3.20; 100 bulbs, \$30.

MARGINATA. Clear chrome yellow, with broad flush of rosy orange; inside bright orange, shading to yellow at edges of petals, and yellow base. A tall Breeder of most showy character and unusual color. Height 28 in. 10 bulbs, \$2.20; 100 bulbs, \$20.

MARIE LOUISE. 3. Old-rose, margined orange-salmon with purple bloom and olive base; small flower of great beauty. A very handsome Tulip for the border. Height 23 in. 10 bulbs, 85 cts.; 100 bulbs, \$7.50.

MARY HOLLIS. 3. Soft, cherry-rose, edged old-rose; yellow base starred olive. Medium-size, cup-shaped bloom of fine color. Height 22 in. 10 bulbs, 80 cts.; 100 bulbs, \$7.

MON TRESOR. 3. Indian red, with orange tone at edge of petals; inside dull blood-red, with yellow base marked bronze; a medium-sized flower, quite distinct. Height 25 in. 10 bulbs, 65 cts.; 100 bulbs, \$5.50.

MONT VESUVE. 3. Chestnut-brown, edged soft amber-yellow, with greenish base; not a large bloom but a good color for planting with paler yellow tones. Height 26 in. 10 bulbs, 80 cts.; 100 bulbs, \$7.

MOODY. 2. Dull lilac-purple, with narrow edge of amber-brown; inside maroon-purple, with blue-purple midrib, and bright yellow base starred olive and white. A beautiful example of the old Dutch Breeder Tulips. Height 28 in. 10 bulbs, 85 cts.; 100 bulbs, \$7.50.

MR. GROENEWEGEN. 3. Soft tan-yellow, flushed bronze-lilac and edged coppery old-rose; inside bronze-lilac, with yellow base and broad green halo. Large flower, often having extra petals. A beautiful Breeder for combining with lavender shades. Height 27 in. 10 bulbs, 85 cts.; 100 bulbs, \$7.50.

OLD TIMES. 3. Garnet, edged primrose-yellow, with greenish base; rather long flower of somewhat pointed form; an English Breeder of most unusual color. Height 24 in. 10 bulbs, \$1; 100 bulbs, \$8.

PALADIN. 3. Deep old-rose, edged soft tan; inside apricot, shading to purple with tan edge; yellow base starred green. A large flower of bold habit and a very showy color combination. Height 27 in. 10 bulbs, \$2.20; 100 bulbs, \$20.



PANORAMA; syn., FAIRY; THE MONUMENT. 2. Deep orange, shaded mahogany; extra-large, globular flower of brilliant color. Needs to be planted with other orange varieties. Height 26 in. 10 bulbs, \$1; 100 bulbs, \$8.

PERLE ROYALE. 2. Opening white, with narrow penciled edge of bright carmine; with age rosy lilac, edged carmine-rose. Large, open flower, slightly reflexing. Height 27 in. 10 bulbs, \$1; 100 bulbs, \$8.

PLUTARCHUS. 3. Bronze, overlaid with dull lilac; inside shaded terra-cotta toward the olive-green base. A flower of great beauty and handsome among evergreens and for borders. Height 26 in. 10 bulbs, \$1; 100 bulbs, \$8.

PRINCE ALBERT. 2. Golden brown, with purple flush through center of petals, which disappears as the flower ages. Large, loosely formed flower, with slightly reflexing petals and a green base. This is undoubtedly the finest of the yellow-brown Tulips. Height 32 in. 10 bulbs, \$1.20; 100 bulbs, \$10.

PRINCE OF ORANGE. 3. Terra-cotta, edged orange-yellow, with yellow base starred black; large, showy flower for the border. Height 27 in. 10 bulbs, \$1.20; 100 bulbs, \$10.

PRINCE OF WALES. 2. Warm maroon-brown, edged coffee-brown; inside coppery brown, with black base, starred yellow. Long flower of flat, open form; fine for planting with paler bronze or Yellow Breeders. Height 28 in. 10 bulbs, \$1.50; 100 bulbs, \$13.

QUEEN ALEXANDRA. 2. Canary-yellow, broadly flushed lilac-brown at tips of petals; inside clear yellow, with black anthers and brownish base. A medium-sized Tulip of distinct character for outdoors or forcing. Height 23 in. 10 bulbs, 70 cts.; 100 bulbs, \$6.

QUEEN VICTORIA. 3. Carmine-rose, edged Indian red when opening, with age assuming a distinct bluish tone over the red ground color; yellow base with green star. Not a large flower, but an interesting and fine color. Height 19 in. 10 bulbs, \$1; 100 bulbs, \$8.50.

ROSE DES DAMES. 2. Dark lilac-rose, almost a dark pink; medium-sized flower of a very beautiful shade. Fine for the border. Height 23 in. 10 bulbs, 75 cts.; 100 bulbs, \$6.50.

RUBY. 2. Soft, deep wine-red, with ashy bloom, and green-blue base starred white; long flower on graceful stem, very like a Cottage Tulip. Height 25 in. 10 bulbs, 65 cts.; 100 bulbs, \$5.50.



- SABRINA.** 2. Coffee-brown, edged light brown; inside mahogany-brown, with yellow base. A medium-sized flower, of value where a less costly Tulip is wanted in this shade. Height 23 in. 10 bulbs, 65 cts.; 100 bulbs, \$5.50; 1,000 bulbs, \$50.
- SALOMON.** 3. Silvery lilac, flushed buff when opening; inside slightly deeper tone, with large, white base; very long, loosely formed flower, carried on a graceful stem. The most beautiful lavender Breeder in our collection. Height 30 in. 10 bulbs, \$1.30; 100 bulbs, \$11.
- SOCRATES;** syn., **VIOLET QUEEN.** 3. Deep rosy violet, with dull blue base; large flower of stately habit, often having extra petals. Height 28 in. 10 bulbs, 80 cts.; 100 bulbs, \$7.
- ST. JAMES.** 2. Dark rosy lilac, edged bronzy tan, with coppery rose flush at tips of petals; inside ruddy mahogany, edged golden brown with yellow and green base. A large flower on tall stem. A superb Breeder which should be in every collection. Height 28 in. 10 bulbs, \$2; 100 bulbs, \$18. See illustration.
- SUPERBA.** 3. Glistening chestnut-brown, with narrow golden brown edge, and yellow base starred green; large flower of graceful, open shape, on tall stem. A Breeder of extremely high quality. Height 27 in. 10 bulbs, \$1; 100 bulbs, \$8.
- TURENNE;** syn., **MACMAHON.** 1. Purplish brown, with broad margin of amber-yellow and yellow base; very large and beautiful flower, especially effective in the border. Height 30 in. 10 bulbs, \$1; 100 bulbs, \$9.
- VELVET KING.** 3. Dark, glossy purple-maroon, with yellowish base marked blue; an enormous flower of splendid lasting qualities, often having an extra number of petals. Height 25 in. 10 bulbs, \$1.60; 100 bulbs, \$14.
- VERTUMNUS.** 2. Rosy purple, with age becoming grayish lilac, tinged purple; white base. A large flower of loose habit on tall stem. Height 28 in. 10 bulbs, \$1.20; 100 bulbs, \$10.
- VIRGILIUS.** 2. Rich purple, shaded lighter purple at the very edge, with dull blue base starred white; long, egg-shaped flower of silky texture, with frilled edge to the petals. Height 28 in. 10 bulbs, \$1.80; 100 bulbs, \$16.
- VULCAIN.** 2. Reddish apricot, with broad margin of bright buff-yellow; inside dark apricot edged yellow, with dark green base starred yellow. A flower of fine form and in color unlike any other Tulip. Height 25 in. 10 bulbs, \$2; 100 bulbs, \$18.



WILBERFORCE. 4. Soft apricot, edged a clear tone of primrose-yellow, with broader yellow margin inside and green base; a medium-sized flower of distinct color, on very tall stem. Splendid for the border. Height 32 in. 10 bulbs, \$1.30; 100 bulbs, \$11.

YELLOW PERFECTION; syn., OLD GOLD. 2. Light bronze-yellow, edged golden yellow; inside bronzy brown, with yellow base starred green. Very effective planted with Darwin Tulip Clara Butt. Height 24 in. 10 bulbs, \$1; 100 bulbs, \$8.

Bybloem and Bizarre Tulips

Bybloem and Bizarre Tulips are "rectified" Breeder types. These Tulips are an old race, having been grown in Holland long before the early sorts were known. They are tall growers and have large flowers particularly noteworthy for their beautiful shape.

The Bybloems are striped and feathered rose or violet, on a white ground; the Bizarres have dark brown or maroon-red stripes and feathering on a yellow ground, the markings varying in individual flowers. The new varieties in this class are far finer than the older, smaller kinds, and are very attractive in the herbaceous border. They come into flower about the same time as the later Darwins, and should have the same cultural treatment. They do not grow quite so tall, however, and show off to best advantage by themselves or with the Rembrandt Tulips. The bulbs of these Tulips are never very large.

The figure following the name indicates the relative time of flowering.

ADMIRAL KINGSBERGEN. 2. Rose Bybloem. Bright crimson, flamed and feathered white; large flower of great beauty, with an exceedingly stiff stem. There is an inferior form of this Tulip. Height 23 in. 10 bulbs, \$1.80; 100 bulbs, \$16.

ATHALIA. 3. Rose Bybloem. White, bordered and feathered bright rose; large flower. A very beautiful Bybloem. Height 20 in. 10 bulbs, \$1; 100 bulbs, \$8.

BLACK BOY. 2. Bizarre. Yellow ground, flamed and feathered dark brown; medium-sized flower. A very striking Tulip for borders or among low evergreens. Height 21 in. 10 bulbs, 80 cts.; 100 bulbs, \$7.

GLORY OF HOLLAND. 2. Violet Bybloem. Pure white, bordered and profusely feathered violet-purple. A fine example of the old florist's Tulip. Height 20 in. 10 bulbs, \$1.70; 100 bulbs, \$15.



JUPITER. 3. Bizarre. Yellow ground, irregularly flushed and flaked deep mahogany-red, some flowers being nearly all red, yellow base; large, open flowers of handsome form; a superb Bizarre. Height 23 in. 10 bulbs, \$2.60; 100 bulbs, \$24.

✓ LADY STANLEY. 2. Violet Bybloem. White, striped and feathered dark violet; medium size; fine for borders. Height 19 in. 10 bulbs, \$1; 100 bulbs, \$8.

✓ LA VICTORIEUSE. 3. Violet Bybloem, creamy white ground, flamed and feathered violet-purple; many flowers have only a narrow feathered edge. Huge flower on stiff stem. A very fine Bybloem Tulip. Height 24 in. 10 bulbs, \$2.20; 100 bulbs, \$20.

✓ LE DUEL. 3. Bizarre. Dark coffee-brown, feathered bright yellow; large flower; a very handsome variety. Height 19 in. 10 bulbs, \$1.30; 100 bulbs, \$11.

✓ L'UNION. 3. Bizarre. Yellow ground, heavily flamed and striped madder-brown. A large, tall Bizarre of very showy character. Height 24 in. 10 bulbs, 85 cts.; 100 bulbs, \$7.50.

REINE DE HOLLANDE. 2. Rose Bybloem. White, flamed and feathered dark red; medium size. A distinct Tulip in its markings. Height 21 in. 10 bulbs, \$1.20; 100 bulbs, \$10.

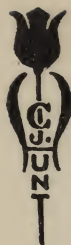
ROI DES CERISES. 2. Rose Bybloem. White ground, feathered bright wine-red; good-sized flower of exquisite shape. One of the best for borders. Height 20 in. 10 bulbs, \$1; 100 bulbs, \$8.50.

ROME; syn., MONSIEUR DE FAESCH. 3. Bizarre. Bright yellow, feathered and bordered orange-red; large flower. A very striking variegated sort. Height 20 in. 10 bulbs, \$1; 100 bulbs, \$8.

✓ VONDEL. 2. Violet Bybloem. White ground, striped dark violet and feathered light bluish violet; medium-sized flower. A splendid variety. Height 21 in. 10 bulbs, \$2.40; 100 bulbs, \$22.

Parrot Tulips

Parrot Tulips are May-flowering sorts having laciniated or slashed edges. They take their name from a supposed similarity of the flower in the bud state to the head of a parrot. The flowers are large and of striking color, growing about 14 or 15 inches high, but a tendency to weak stems makes them unsuited for bedding purposes. They are best grown in the border or among shrubs, where their habit of growth is not so great a disadvantage. Parrots are notoriously shy bloomers, but in this respect the stock offered below will be found unusually satisfactory. To offset this characteristic, the bulbs should be planted not more than 4 or 5 inches apart. The Parrot Tulips will come into flower along with the midseason Darwin Tulips.



Prices of all varieties, 10 bulbs, 60 cts.,

100 bulbs, \$5; 1,000 bulbs, \$45

ADMIRAL VON CONSTANTINOPLE. Bright scarlet, shaded orange; very showy.

CAFE BRUN. Deep yellow, striped and stippled orange-brown. An unusually large flower of distinct color.

CRAMOISI BRILLANT. Rich blood-crimson, with black markings; very large and brilliantly effective. A very free bloomer in this class.

LUTEA MAJOR. Clear yellow, with a few crimson and green blotches and stripes.

MARKGRAAF VON BADEN. Orange, shaded and feathered reddish purple and green, inside orange-yellow. The most striking of the Parrots.

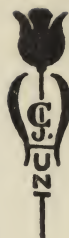
Tulip Species

The various species of botanical Tulips are natives of Asia Minor and Central Asia; indeed, the ancestors of all our garden Tulips have had their home in parts of Turkey and Asia Minor. These species show an almost endless variety of color, shape, height and season of bloom, though the general characteristics are bright colors and pointed or recurved petals. Only a few of the sorts retain a robust constitution when transferred from their habitat, yet for rock-gardens or spring borders many kinds are fairly well adapted, and will be contented for two or possibly three seasons, if care is taken to provide suitable quarters for them. Those who desire to have a fairly representative collection of Tulips will not fail to plant at least some of these. A few of the best sorts are included in the following list:

✓ **CLUSIANA.** Outer petals bright cherry-red, inner petals creamy white, with violet base; small flower, but very distinct and beautiful. It should be planted in light soil 6 to 9 inches deep in the rock-garden in a sheltered place or among stones in the front of the herbaceous border. Late April. Height 8 in. 10 bulbs, 70 cts.; 100 bulbs, \$6.

EICHLERI. Bright scarlet; a very large flower on good stem, which we recommend in place of Greigii. Height 11 in. 10 bulbs, \$2.20; 100 bulbs, \$20.

✓ **KAUFMANNIANA.** Creamy white, more or less tinged rosy red on the outside; among a number of bulbs there will be a difference in the character of the markings. Large flower of handsome form, with broad, reflexing petals. The earliest of all Tulips, flowering late in March or early in April. Height 12 in. 10 bulbs, \$1.30; 100 bulbs, \$11.



MARJOLETTI. Soft primrose, shaded carmine-red, green star at base of petals; small flower of very attractive color. A Tulip from Savoy, flowering about the second week in May. Height 14 in. 10 bulbs, 75 cts.; 100 bulbs, \$6.50.

PRAESTANS. Dazzling orange-scarlet; very long, large flowers sometimes coming four or five to a stem. A very showy Tulip from Bokhara and superb for bedding. Late April. Height 14 in. 10 bulbs, \$2.60; 100 bulbs, \$24.

SYLVESTRIS; syn., FLORENTINA. Pure yellow; medium-sized, drooping flowers. The sweet-scented wild English Tulip. Fine for naturalizing, but must become established before it flowers freely. Height 16 in. 10 bulbs, 85 cts.; 100 bulbs, \$7.50; 1,000 bulbs, \$70.

VRIDIFLORA. 2. Known as the Green Tulip. Pale green, edged creamy yellow; very open flower, with narrow petals. Height 20 in. 10 bulbs, 65 cts.; 100 bulbs, \$5.50.

VRIDIFLORA PRAECOX. Similar to Viridiflora, but earlier, larger, and finer in every respect. Height 20 in. 10 bulbs, \$1.60; 100 bulbs, \$14.

Tulip Mixtures

Although the planting of mixed bulbs seems to be in rather poor taste, there are some occasions where the use of named varieties is inadvisable. To meet the requirements of those who may wish to plant mixtures of Tulips, we are able to supply a superior quality of bulbs, in a varied assortment of colors, which will give the highest satisfaction. **CREAM QUALITY** will be as evident in all of our mixtures as in any other bulbs we shall send out.

SINGLE EARLY TULIPS—Cream Quality Mixture. 100 bulbs, \$4.50; 1,000 bulbs, \$38.

DOUBLE EARLY TULIPS—Cream Quality Mixture. 100 bulbs, \$4.50; 1,000 bulbs, \$38.

COTTAGE TULIPS—Cream Quality Mixture. 100 bulbs, \$4.50; 1,000 bulbs, \$38.

DARWIN TULIPS—Cream Quality Mixture, 100 bulbs, \$4.50; 1,000 bulbs, \$38.

BREEDER TULIPS—Cream Quality Mixture. 100 bulbs, \$5.50; 1,000 bulbs, \$48.

PARROT TULIPS—Cream Quality Mixture. 100 bulbs, \$4.50; 1,000 bulbs, \$38.



DAFFODILS

NARCISSI, or Daffodils, are probably the most popular of spring-flowering bulbs. Blooming before the winter snows are quite forgotten, they bring to the garden its first lavish display of color, spreading out their hoard of yellow beauty in response to the coaxing of the April sun. From March until well into May the Daffodils are in bloom, and by a judicious selection of varieties the borders may be kept bright for over a month. Whether the great trumpets of the new monsters are handsomer than the dainty elegance of the small-crowned sorts must be a question of individual taste, but there are no Daffodils without the charm of shape or color. Its ease of culture makes the Daffodil the flower for every garden.

In 1909 the Royal Horticultural Society of England adopted a revised classification of the Daffodils, which, in the main, is followed in this list. According to the new arrangement the following divisions are recognized:

- I. TRUMPET DAFFODILS. Trumpet or crown as long as or longer than the perianth segments.
 - AJAX YELLOW. Perianth and trumpet yellow.
 - AJAX BICOLOR. Perianth white, trumpet yellow.
 - AJAX WHITE. Perianth and trumpet white.
- II. INCOMPARABILIS DAFFODILS. Cup or crown measuring from one-third to nearly equal the length of the perianth segments.
- III. BARRII DAFFODILS. Cup or crown measuring less than one-third the length of the perianth segments.
- IV. LEEDSII DAFFODILS. Comprising all the chalice-cupped and short-cupped Narcissi having white perianth, and cup or crown of white, cream or pale primrose.
- V. TRIANDRUS HYBRIDS.
- VI. CYCLAMINEUS AND THEIR HYBRIDS.
- VII. JONQUILS AND THEIR HYBRIDS.
- VIII. TAZETTA AND THEIR HYBRIDS.
 - POETAZ. Hybrids between Poeticus and Polyanthus sorts.



Daffodils for Everybody



THE ten varieties noted below are Mr. Hunt's selection of the best for the beginner's garden. This group represents all the types, consists of good growing kinds, and costs very little.

Order Recommendation JJ

Ten bulbs of each variety for \$9.65

AUTOCRAT	EMPRESS
BEAUTY	ORNATUS
C. J. BACKHOUSE	SEAGULL
CONSPICUOUS	SIR WATKIN
EMPEROR	WHITE LADY



The Daffodil Walk at Mayfair



IX. POETICUS DAFFODILS. All with snowy white perianth and flattened yellow crown more or less deeply colored with scarlet or crimson.

X. DOUBLE DAFFODILS.

Several varieties of Narcissi are inclined to rot if left too long out of the ground, and it is imperative, where this characteristic is noted, to plant as soon as the bulbs are received. All the bulbs we send out are sound and healthy, but we cannot be responsible for decaying bulbs unless notified at once upon their receipt.

We offer only top sized bulbs. We would suggest that those who are interested in the naturalizing of Daffodils write for our special leaflet descriptive of this charming manner of planting these flowers.

The varieties in this list have been selected with the idea of providing not only the very best standard kinds and the better-known novelties, but also the newer and rarer productions of the foreign hybridists, which we can confidently recommend as being the gems among the hundreds developed by these specialists.

Detailed planting directions are included with the shipment of the bulbs.

The figure following the name indicates the relative time of flowering.

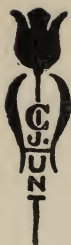
ADMIRATION. Poetaz. 3. Perianth sulphur-yellow; sulphur-yellow eye, edged scarlet-red; a beautiful variety in this class. Height 14 in. 10 bulbs, \$2.20; 100 bulbs, \$20.

ALBATROSS. Barrii. 4. Large, flat, white perianth; cup pale citron, with a ribbon edge of bright madder-red and beautifully frilled brim; a fine, large flower and a good garden variety. Height 20 in. 10 bulbs, \$1; 100 bulbs, \$8.50.

ALICE KNIGHTS. White Trumpet. 2. White perianth with slightly twisted petals; creamy white trumpet, slightly recurving and elegant form. A flower of moderate size, but the earliest white Trumpet for outdoors or for pot culture. Height 14 in. 10 bulbs, \$2; 100 bulbs, \$18.

AMBROSINE. Giant Leedsii. 2. White perianth with well rounded petals of very perfect form; soft primrose cup, fading to creamy white and very beautifully frilled. A flower of moderate size but very refined character. Height 16 in. Single bulb, \$2.50.

ANTIGONE. Poetaz. 3. White, with deep chrome-yellow cup the perianth is an unusual one, having three pointed petals laid upon three rounded ones. Many flower-spikes from each bulb, with three to five flowers to a stem. Height 14 in. 10 bulbs, \$1.40; 100 bulbs, \$12.



APRICOT. Bicolor Trumpet. 3. Perianth creamy white, with narrow segments; the trumpet opens primrose and changes inside to pinkish apricot. A small flower of novel color. Height 16 in. 10 bulbs, \$1.80; 100 bulbs, \$16.

ARGENT. Double Incomparabilis. 3. Very pale primrose perianth with double row of petals; chrome-yellow cup. A fine double Daffodil with a strong stem. Height 14 in. 10 bulbs, \$1.20; 100 bulbs, \$10.

ARTEMIS. Incomparabilis. 1. Well-formed sulphur-white perianth of good substance; cup deep primrose-yellow, edged deeper yellow and very broad at mouth. A flower of marked character, and one of the earliest of this class. Height 14 in. 10 bulbs, \$1; 100 bulbs, \$8.50. See illustration.

ASPASIA. Poetaz. 3. Perianth pure white, with soft yellow eye, three or four flowers on a stem. One of the best of this class; being especially bright in color. Height 18 in. 10 bulbs, \$1; 100 bulbs, \$8.

AUTOCRAT. Incomparabilis. 3. Broad perianth of primrose-yellow, tending to reflex; aureolin yellow cup, widely expanded at the mouth. A very handsome, free-flowering variety for the border, and the best of its type for pots. Height 20 in. 10 bulbs, \$1; 100 bulbs, \$9; 1,000 bulbs, \$80. See illustration.

BEAUTY. Incomparabilis. 3. Perianth sulphur-yellow, with slight yellow bar down the center; cup deep yellow, margined orange-scarlet. A large and striking flower for borders and fine for naturalizing. Strong growing and free-flowering. Height 17 in. 10 bulbs, \$1; 100 bulbs, \$8; 1,000 bulbs, \$75. See illustration.

BEDOUIN. Incomparabilis. 4. Perianth glossy white, with broad, overlapping petals; cup chrome-yellow with deep band of orange-scarlet, broad and well expanded. A flower of wonderful substance and lasting qualities. Height 20 in. Single bulb, 60 cts.; 10 bulbs, \$4. See illustration.

BEETHOVEN. Yellow Trumpet. 1. Perianth transparent chrome-yellow, with narrow, spreading petals; long, narrow trumpet of chrome-yellow, deeply cut and crimped at mouth. A variety remarkable for the purity of color and the slashed trumpet brim. Splendid for early forcing. Height 14 in. 10 bulbs, \$1.20; 100 bulbs, \$10.

BERNARDINO. Incomparabilis. 3. Very large, creamy white perianth of great substance; large cup of pale lemon-yellow, flushed and edged pinkish apricot, and very heavily frilled. A telling bit of color, and a splendid Daffodil for the garden. Height 20 in. 10 bulbs, \$3.20; 100 bulbs, \$30. See illustration.



A Selection of Daffodils for Cutting

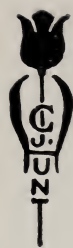


FOR our customers who eagerly rob the garden for flowers to fill their vases, Mr. Hunt advises the following list as being especially graceful and decorative for cut-flowers. And besides, they are fine in the garden.

Order Recommendation KK

Ten bulbs of each for \$10.60

BEAUTY	FRANK MILES
DUCHESS OF	GLORIA MUNDI
WESTMINSTER	GLORY OF LISSE
EVANGELINE	LUCIFER
FAIRY	SIR WATKIN
	VANILLE



1—Maid of Athens 2—Czarina 3—Queen of the North



BLOOD ORANGE. Barrii. 3. Broad, overlapping perianth of a peculiar creamy yellow; cup sunflower-yellow, very daintily frilled. A variety of interesting color and a good grower. Height 16 in. 10 bulbs, 85 cts.; 100 bulbs, \$7.50; 1,000 bulbs, \$70.

BOUQUET ENORME. Poetaz. 3. Crinkled white perianth of splendid substance; deep yellow cup, beautifully fluted. Compact spike, bearing six or more flowers. Height 13 in. 10 bulbs, \$1.40; 100 bulbs, \$12.

BRANSTON. Barrii. 3. Sulphur-white perianth, with rather spreading petals; cup chrome-yellow, tipped at rim orange-red. A sport of *Conspicuus*, with all the good qualities of that variety. Height 18 in. 10 bulbs, \$1; 100 bulbs, \$8.50.

✓ **BRILLIANCY.** Barrii. 2. Perianth deep golden yellow; cup yellow, edged with deep scarlet. A very large flower measuring 5 inches across, which might be called a glorified *Conspicuus*. The scarlet edge to the cup does not burn, making it an invaluable flower for the garden or for exhibition. Height 16 in. Single bulb, \$1.

BULLFINCH. Barrii. 3. Milk-white perianth, with broad and rather incurving petals; shallow cup of pure yellow, frilled at edges. A fine variety for the garden and exquisite in its clear color tones. Height 15 in. 10 bulbs, \$1; 100 bulbs, \$8.

CARDINAL. Barrii. 3. Sulphur-white perianth with rather long petals; cup soft primrose broadly edged orange. Not a large flower but a very telling bit of color in the border. Height 14 in. 10 bulbs, 85 cts.; 100 bulbs, \$7.50; 1,000 bulbs, \$70.

CASTILE. Barrii. 4. Sulphur-white perianth, with rather starry petals; cup bright yellow, slightly darker at rim, with greenish eye and marked fluting. A splendid flower of vigorous growth and fine color, but very scarce. Height 16 in. 10 bulbs, \$5. See illustration.

CHEERFULNESS. Double poetaz. 3. Three to four double white flowers on a stem, shaded deep yellow at the center. A new type in this section and a most distinct and beautiful flower. Height 14 in. Single bulb, \$2.

C. J. BACKHOUSE. *Incomparabilis*. 2. Starry perianth, soft yellow, of medium size; long cup of orange-yellow suffused orange-red. A very distinct and attractive variety which does best in cool soil or partial shade; fine for naturalizing. Height 18 in. 10 bulbs, \$1; 100 bulbs, \$8; 1,000 bulbs, \$75.



CLEOPATRA. Yellow Trumpet. 3. Perianth broad and overlapping, of a clear primrose-yellow; long, bold trumpet, beautifully imbricated, of deep, rich yellow. A variety of refined character and the very finest Yellow Trumpet of Emperor coloring. Height 18 in. Single bulb, 60 cts.; 10 bulbs, \$4.

COMMANDANT. Yellow Trumpet. 2. Pale yellow perianth with long spreading almond-shaped petals; long, chrome yellow trumpet, opening wide at brim. A flower of huge size, but not ungainly. Height 14 in. 10 bulbs, \$3.70; 100 bulbs, \$35.

CONSPICUUS. Barrii. 4. Large, broad, spreading perianth of soft yellow; short yellow cup, edged bright orange-scarlet. One of the most useful of all Daffodils. Splendid for the border or naturalizing, and superb for midseason forcing. Height 21 in. 10 bulbs, 65 cts.; 100 bulbs, \$5.50; 1,000 bulbs, \$50.

CORNELIA. Yellow Trumpet. 2. A uniform soft yellow, with broad, smooth perianth and large, well-expanded trumpet. A sturdy flower of great size and substance; strong grower. Height 18 in. 10 bulbs, \$1.60; 100 bulbs, \$14.

COSSACK. Barrii. 3. Creamy white perianth, with broad, overlapping petals of great substance and slightly reflexing; frilled, open cup with broad margin of pure deep crimson. A very handsome Daffodil of perfect form. Height 18 in. 10 bulbs, \$3; 100 bulbs, \$28.

CROESUS. Incomparabilis. 3. Pale primrose perianth with thick, overlapping petals; wide expanded crown of great size, heavily suffused and stained deep orange-red. A flower of great substance, and one of the very finest things of recent introduction. Height 17 in. Single bulb, \$4.

CZARINA. Giant Leedsii. 4. Pure white perianth with long, pointed petals beautifully twisted but overlapping at base; pale lemon crown, rather whiter outside and exquisitely frilled. A very decorative flower and superb in the garden. Height 15 in. Single bulb, 75 cts.; 10 bulbs, \$6. See illustration.

DOROTHY E. WEMYSS. Barrii. 4. Broad, white perianth; cup clear lemon-yellow, edged orange-scarlet; strong grower and late bloomer. A remarkably fine Daffodil in this section. Splendid for borders. Height 20 in. 10 bulbs, \$1; 100 bulbs, \$8.50.

DUCHESS OF WESTMINSTER. Leedsii. 3. Pure white perianth; cup soft canary-yellow with darker edge, passing into ivory-white; large star-like flower of exquisite beauty. Fine for borders, naturalizing or growing in pots. Height 16 in. 10 bulbs, \$1; 100 bulbs, \$8.



The Standard List of Garden Daffodils



THESE are the best of the older kinds and the less expensive of the newer ones. Together the varieties make up an unusually valuable collection for the gardener who desires to have a really good set of Daffodils without buying the per bulb kinds.

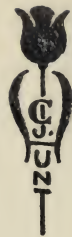
Order Recommendation LL

Ten bulbs of each for \$11.25

BLOOD ORANGE	LUCIFER
EVANGELINE	MADAME DE GRAAF
FAIRY	MAID OF ATHENS
GLORIA MUNDI	THE STAR
GLORY OF LISSE	VANILLE



1—Peter Barr 2—Weardale Perfection 3—Her Grace



DUKE OF BEDFORD. Bicolor Trumpet. 2. White perianth, with loose, spreading petals; long trumpet of chrome-yellow, well frilled at the mouth. A huge, strong-growing Daffodil, most effective because of the marked contrast in color between the deep trumpet and the glistening perianth. Height 16 in. 10 bulbs, \$2.60; 100 bulbs, \$24.

EDRIN. Incomparabilis. 2. Primrose yellow perianth, with starry petals slightly folded back along edges; large, open cup of deep canary-yellow, beautifully fluted at edges. A new Daffodil of very graceful character yet vigorous growth, of great value for cutting. Offered exclusively in The Blue Book. Height 22 in. 10 bulbs, \$2; 100 bulbs, \$18.

ELIZABETH RYAN. Barrii. 3. Perianth white with round overlapping petals; small cup of primrose yellow. A small flower, but exquisite in its daintiness and pure color; a gem for the rock garden. Height 10 in. Single bulb, 75 cts.; 10 bulbs, \$6.

ELVIRA. Poetaz. 3. Perianth pure white, eye bright yellow. Three or four flowers of great substance on a stiff stem. Fine for forcing. Height 20 in. 10 bulbs, \$1; 100 bulbs, \$8.

EMPEROR. Yellow Trumpet. 3. Perianth deep primrose-yellow, broad at base; trumpet rich yellow. A large flower of remarkable substance; fine for borders or forcing. Height 20 in. 10 bulbs, \$1.10; 100 bulbs, \$9; 1,000 bulbs, \$85.

EMPIRE. Giant Leedsii. 2. Large white perianth, with broad, imbricated petals; very large crown of soft lemon, passing into white as the flower ages, and most beautifully frilled. An enormous Leedsii of wonderful substance and great refinement, being undoubtedly the finest Giant Leedsii yet raised. Height 16 in. Single bulb, \$1.

EMPRESS. Bicolor Trumpet. 3. Sulphur-white perianth, with rather narrow petals; trumpet rich chrome-yellow. A very useful Daffodil for the border. Height 18 in. 10 bulbs, \$1.10; 100 bulbs, \$9; 1,000 bulbs, \$85.

EPIC. Poeticus. 4. Solid, substantial, white perianth of great size; cup canary-yellow, rimmed bright red. One of the new Poeticus varieties which we have noted every season as being the best in our trial-gardens. Height 17 in. 10 bulbs, \$1.80; 100 bulbs, \$16.

EPICURE. Incomparabilis. 3. Milk-white perianth with very broad overlapping petals of fine substance; open cup of canary-yellow, beautifully fluted at edges. A fine exhibition variety and equally good in the garden. Height 14 in. 10 bulbs, \$2.40; 100 bulbs, \$22.



EVANGELINE. Leedsii. 4. Broad, pure white perianth, with smooth, overlapping petals of remarkable substance; large, expanding cup of citron-yellow. A Daffodil of great beauty, fine substance, and wonderful form. Height 18 in. 10 bulbs, \$1; 100 bulbs, \$8; 1,000 bulbs, \$75.

FAIRY. Yellow Trumpet. 2. Perianth primrose-yellow, with long, almond-shaped petals; bright chrome-yellow trumpet, very large and beautifully reflexed and frilled at the brim. A large flower of graceful habit; one of the most permanent for borders and superb for forcing. Height 14 in. 10 bulbs, \$1.30; 100 bulbs, \$11.

FAIRY QUEEN. Leedsii. 4. Pure white perianth, with slightly incurving petals; straight cup of pure white, prettily frilled. A great improvement over Mrs. Langtry, as it does not become wingy with age. Very fine for the garden or in pots. Height 14 in. 10 bulbs, 85 cts.; 100 bulbs, \$7.50.

FIREBRAND. Barrii. 4. Perianth creamy white, shaded soft yellow at base; cup intense fiery red, prettily fluted. This is one of the brightest of all Daffodils. Splendid for shaded borders, where the bright color retains its intensity. Height 17 in. 10 bulbs, \$1; 100 bulbs, \$8.50.

FIRETAIL. Barrii. 3. Large creamy white perianth with petals overlapping at base; large flat cup of deep orange, the color keeping well in the sun. One of the finest of the new varieties. Height 16 in. Single bulb, \$3.

FLORA WILSON. Barrii. 3. White perianth; cup bright yellow, stained deep orange. A lovely Daffodil for pots, and very beautiful in the border; one of the best small-cupped kinds for naturalizing. Height 20 in. 10 bulbs, 75 cts.; 100 bulbs, \$6.50; 1,000 bulbs, \$60.

FRANK MILES. Incomparabilis. 3. Pale yellow perianth, of starry form and elegantly waved; cup bright yellow; large, handsome flower. Fine for massing in borders and for cutting, and very good for pot culture. Height 21 in. 10 bulbs, \$1.20; 100 bulbs, \$10.

GIRAFFE. Incomparabilis. 3. Perianth lemon yellow, with rounding petals; large, open cup of deep egg yellow. A fine example of the larger Incomparabilis class. Height 15 in. Single bulb, \$3.

GLITTER. Barrii. 3. Chrome-yellow perianth with round petals; small yellow cup, with narrow margin of orange-red. A rather small flower something like a yellow Poeticus. Height 14 in. 10 bulbs, 85 cts.; 100 bulbs, \$7.50; 1,000 bulbs, \$70.



Daffodils for the Expert Gardener



IF YOU were to ask Mr. Hunt for his choice of the new kinds in a representative list of all the classes, he would tell you to choose the list below. These are the gems among the rarer sorts, and are just as beautiful when cut for closer admiration as they are when grown in the favorite corner of your garden.

Order Recommendation MM

*Ten bulbs of each of the ten
kinds for \$22.80*

EDRIN	ORANGEMAN
KING ALFRED	RED BEACON
LORD KITCHENER	THELMA
MASTERPIECE	VAN WAVEREN'S
MRS. CHESTER JAY	GIANT
HUNT	WHITEWELL



1—White Lady 2—Beauty 3—Blood Orange
4—Artemis



GLORIA MUNDI. *Incomparabilis*. 3. Perianth primrose-yellow, with broad petals; crown dark chrome at base, deepening to brilliant orange-red at brim, large and well frilled and fluted. A flower altogether beautiful for its fine proportion, good substance and striking color. Height 18 in. 10 bulbs, \$1.20; 100 bulbs, \$10.

GLORY OF LEIDEN. Yellow Trumpet. 3. Perianth primrose-yellow, streaked straw-yellow; very long trumpet of golden yellow; enormous flower of great substance; fine for pot culture, if not forced hard. Must be planted early. Height 16 in. 10 bulbs, \$1.10; 100 bulbs, \$9.

GLORY OF LISSE. *Poeticus*. 4. Very large, snow-white perianth, with well-defined midrib through the overlapping petals; cup margined red. A very beautiful flower, and the best of the moderate priced *Poeticus*. Height 16 in. 10 bulbs, 85 cts.; 100 bulbs, \$7.50; 1,000 bulbs, \$70.

GLORY OF NOORDWIJK. Bicolor Trumpet. 2. Very large perianth of sulphur-white, with yellow stripe through the middle of the overlapping petals; trumpet chrome-yellow, very long and much reflexed and frilled at the brim. A flower of very graceful yet substantial beauty. Height 14 in. 10 bulbs, \$1.30; 100 bulbs, \$11.

GOLDEN PHENIX; *syn.*, **PALLIDUS PLENUS.** Double *Incomparabilis*. 3. Light yellow, with deep golden center; large, very double flowers. Height 17 in. 10 bulbs, 80 cts.; 100 bulbs, \$7; 1,000 bulbs, \$65.

GOLDEN SPUR. Yellow Trumpet. 1. Self-colored a deep rich, yellow. Perianth large and spreading; large trumpet with broad, open mouth. Splendid for early forcing. Height 17 in. 10 bulbs, \$1; 100 bulbs, \$9.

HAEMON. *Poetaz*. 4. Primrose-yellow perianth of good size and form; chrome-yellow cup neatly frilled. A splendid color among the new *Poetaz* varieties. Height 13 in. 10 bulbs, \$1.20; 100 bulbs, \$10.

HELIOS. *Incomparabilis*. 3. Perianth pale primrose-yellow with stiff overlapping petals of remarkable texture; large, open cup of decided orange-red. This new *Daffodil* is remarkable for its size, substance, and peculiarly rich color. Height 16 in. Single bulb, \$7.

HENRIETTE. 3. Giant *Incomparabilis*. Deep primrose perianth, with long, spreading petals; deep chrome-yellow cup, funnel shaped and prettily fluted at brim. An exhibition flower of perfect form and proportions. Height 16 in. Single bulb, \$5.



✓ HER GRACE. Giant Leedsii. 2. Milk-white perianth with long, pointed petals noticeably ribbed; cup soft primrose-yellow passing to white at edges and exquisitely frilled. A flower of almost transparent quality and erect habit. Height 12 in. Single bulb, \$1; 10 bulbs, \$8. See illustration.

✓ HOLBEIN. Incomparabilis. 3. Pure white petals, broad and somewhat pointed, of thick substance; chrome-yellow cup, slightly darker at brim. A large flower of great beauty and a splendid garden variety. Height 13 in. 10 bulbs, \$3; 100 bulbs, \$28.

HOMESPUN. Incomparabilis. 4. Perianth and crown a bright, sunny yellow, with broad, flat, overlapping petals of great substance. A particularly refined Daffodil of flawless form. Height 17 in. 10 bulbs, \$1.20; 100 bulbs, \$10.

JULIET. Poeticus. 2. Pure white perianth, with overlapping round petals; large cup with tiny rim of scarlet-red. A fine flower and one of the early varieties in this section. Height 16 in. 10 bulbs, \$1.20; 100 bulbs, \$10.

KING ALFRED. Yellow Trumpet. 2. Perianth and trumpet rich chrome-yellow; broad perianth petals of great substance; trumpet of medium size, widely expanding, with brim rolled back one-half inch and beautifully fluted. A glowing flower of lasting quality. Height 20 in. 10 bulbs, \$2.40; 100 bulbs, \$22.

✓ KINGDOM. Giant-Leedsii. 3. White perianth, with round overlapping petals of great substance; lemon-yellow cup, a little deeper in tone at brim, of open form. A tall grower and wonderful lasting qualities. Height 15 in. 10 bulbs, \$2.40; 100 bulbs, \$22.

KLONDYKE. Poetaz. 3. Perianth yellow, with golden yellow eye. Six or seven flowers. Height 14 in. 10 bulbs, \$1.50; 100 bulbs, \$13.

LADY ARNOTT. Incomparabilis. 1. Perianth bright primrose-yellow, with long almond-shaped petals; large crown, very heavily stained bright orange. A flower of fine substance and a telling bit of color. Height 15 in. Single bulb, \$1.

LADY AUDREY. White Trumpet. 3. Milk-white perianth of slightly campanulate form; long, bold trumpet, with open mouth, soft creamy primrose in color, changing to white with age. An exquisite, new, white Trumpet Daffodil, which can be thoroughly recommended for the garden; free flowering. Height 16 in. 10 bulbs, \$2.20; 100 bulbs, \$20.

LEMONDROP. Incomparabilis. 3. White perianth, with almond-shaped petals; deep lemon cup. A charming flower of rather drooping habit and one of the most free-flowering of all Narcissi. Height 14 in. 10 bulbs, 80 cts.; 100 bulbs, \$7.



Daffodils for February



THE easiest of all flowers to grow in pots during the winter are the Daffodils—provided you know the right kinds to use. Mr. Hunt's selection for this purpose gives you the trustworthy varieties and you can count on having flowers during the winter if you follow the few simple though necessary rules. Our cultural leaflet gives them.

Order Recommendation NN

Ten bulbs of each for \$10.30

ALBATROSS	GLORIA MUNDI
ARTEMIS	GOLDEN SPUR
AUTOCRAT	SILVER SPUR
CONSPICUUS	SIR WATKIN
FIREBRAND	VAN SION



Mrs. Chester Jay Hunt



✓ LEONIE. *Incomparabilis*. 4. Deep primrose perianth, with broad petals; very wide cup of light golden yellow, well opened at the mouth. A striking variety because the cup is so large in proportion to the perianth. Height 15 in. 10 bulbs, \$1; 100 bulbs, \$8; 1,000 bulbs, \$75.

✓ LOHENGRIN. *Barrii*. 4. Snowy perianth, with very round overlapping petals; very flat cup most beautifully crimped and frilled. An exquisite flower for exhibition or for cutting. Height 15 in. Single bulb, \$4.

LORD KITCHENER. *Giant Leedsii*. 3. Large, snowy white perianth, broad and flat, of great substance; big crown of the palest primrose, widely open at mouth and elegantly crimped and fluted at the brim. A flower of perfect quality, one of the most desirable in its class. Height 21 in. 10 bulbs, \$2.20; 100 bulbs, \$20.

✓ LORD ROBERTS. *Yellow Trumpet*. 2. Perianth of remarkable substance, something like two triangles of petals superimposed; long, sturdy trumpet, wholly in keeping with the noble character of the flower. A self-toned, deep, golden yellow Daffodil, of enormous size and glorious color. A free bloomer and tall grower. Height 23 in. Single bulb, 75 cts.; 10 bulbs, \$6.

LOVELINESS. *White Trumpet*. 3. Broad, smooth perianth of snowy whiteness and bold substance; very elegant white Trumpet, expanded at the mouth. A large, yet very graceful and refined flower. Height 14 in. 10 bulbs, \$4; 100 bulbs, \$36.

LUCIFER. *Incomparabilis*. 3. Perianth sulphur-white, with long, well-rounded petals, rather star-like in effect; cup chrome-yellow edged bright orange. A bold, showy flower for outdoors as it holds its color splendidly. Height 18 in. 10 bulbs, 85 cts.; 100 bulbs, \$7.50; 1,000 bulbs, \$70.

✓ LULWORTH BEAUTY. *Incomparabilis*. 2. White perianth, broad and slightly drooping; cup bright orange-red, exquisitely frilled. A showy and distinct variety for the border. Height 14 in. 10 bulbs, 70 cts.; 100 bulbs, \$6; 1,000 bulbs, \$55.

MACEBEARER. *Incomparabilis*. 3. Large, massive perianth, of creamy white with round overlapping petals; very large, expanding cup of deep yellow, in some seasons showing an edge of orange-red. A flower of great substance and perfect form. Height 15 in. Single bulb, 60 cts.; 10 bulbs, \$4.

MADAME DE GRAAFF. *White Trumpet*. 4. Perianth pure white; trumpet soft primrose, passing into milk-white, exquisitely rolled back at brim; large, beautifully formed flower of great substance. A splendid Daffodil for outdoor planting, and a very lovely flower for growing in pots. Must be planted early. Height 15 in. 10 bulbs, \$1.30; 100 bulbs, \$11.



MAID OF ATHENS. Leedsii. 2. Glistening pure white perianth, with three broad and three narrow petals, the latter slightly standing out at the base; soft primrose cup, prettily fluted, with tiny edge of madder-red. A wonderfully beautiful flower with tall stem and very free flowering. Height 16 in. 10 bulbs \$1.60; 100 bulbs, \$14. See illustration.

MARINA. Incomparabilis. 5. Creamy white perianth, with large petals; primrose-yellow cup, rather shallow, broad at brim and slightly crimped. A superb flower of great substance and unusually pure color. One of the last Daffodils to open. Height 16 in. Single bulb, \$1.

MASCOTTE. Barrii. 4. Broad white perianth, with overlapping petals; cup yellow, broadly margined orange-scarlet; a very attractive flower. Height 13 in. 10 bulbs, \$1.40; 100 bulbs, \$12.

MASTERPIECE. Barrii. 4. Perianth sulphur-white, with broad, very round petals of great substance and Poeticus character; eye orange-scarlet, quite flat and beautifully crinkled, the color covering the entire surface of the inch-wide eye. Height 22 in. 10 bulbs, \$2.20; 100 bulbs, \$20.

MERMAID. Leedsii. 1. Large, white perianth, with smooth, overlapping and rather pointed petals; very large, bold crown, elegantly recurving and fluted at brim, of pale creamy primrose turning to creamy white. The most daintily beautiful Giant Leedsii and the earliest to flower. Height 15 in. 10 bulbs, \$1.70; 100 bulbs, \$15.

MIGNON. Poetaz. 4. Well-formed perianth of clear white; deep yellow cup, with tiny edge of bright orange-red. Three or four flowers to a stem, each resembling a smaller-sized Albatross. Height 14 in. 10 bulbs, \$1.80; 100 bulbs, \$16.

MINNIE HUME; syn., **QUEEN OF ENGLAND.** Leedsii. 3. Starry white perianth; cup pale yellow, passing into white; a good-sized flower. A fine variety for massing. Height 16 in. 10 bulbs, 65 cts.; 100 bulbs, \$5.50; 1,000 bulbs, \$50.

M. MAGDALENE DE GRAAFF. Leedsii. 4. Broad white perianth, expanded primrose cup, often suffused orange; frequently two flowers on a stem. Fine for borders. Height 17 in. 10 bulbs, 70 cts.; 100 bulbs, \$6; 1,000 bulbs, \$55.

MOONLIGHT. 2. Yellow Trumpet. Soft primrose perianth and trumpet, growing much paler with age. Long, straight trumpet and almond shaped petals. A very beautiful flower unique in its soft color. Height 14 in. Single bulb, \$2.



For the Corner of Your Garden
Where Your Choicest
Treasures Are



MR. HUNT has chosen these varieties as being some of the very rare and especially beautiful kinds for the gardener who wishes to have some very choice things. For Shows this is a prize-winning collection.

Order Recommendation QQ

One bulb of each for \$13.55

BEDOUIIN	LADY ARNOTT
BRILLIANCY	MACEBEARER
CLEOPATRA	MRS. ERNEST KRELAGE
CROESUS	NOBILITY
HER GRACE	PEDESTAL



1—Red Beacon 2—Bernardino 3—Rosella §



MRS. BUCHANAN. Bicolor Trumpet. 2. Slightly twisted perianth of creamy white; soft lemon trumpet, with broad, open mouth, prettily flanged. A very delicate and pale Bicolor of unusual color. Height 16 in. 10 bulbs, \$2.20; 100 bulbs, \$20.

MRS. CHESTER JAY HUNT. Barrii. 5. Snowy white perianth of wonderfully smooth texture, with pointed petals, very broad at base; large, flat, yellow eye, margined madder-red. A Barrii closely resembling the Poeticus types. A flower of wonderful symmetry and pure coloring. Height 15 in. 10 bulbs, \$1.60; 100 bulbs, \$14. See illustration.

MRS. ERNEST KRELAGE. White Trumpet. 3. Perianth pure white; trumpet pure white when fully developed. The finest white trumpet Daffodil ever raised. Height 16 in. Single bulb, \$2.

MRS. LANGTRY. Leedsii. 4. White perianth; cup opening pale primrose and passing into white, sometimes with a narrow margin of lemon-yellow; a very free-flowering variety, and the very best of the older cheap Leedsii Narcissi. Height 16 in. 10 bulbs, 60 cts.; 100 bulbs, \$5; 1,000 bulbs, \$45.

NOBILITY. Barrii. 3. Large creamy white perianth with overlapping petals; large, flat cup, suffused deep orange-red. A splendid addition to this class because of its glowing cup. Height 16 in. Single bulb, \$1.50.

OBVALLARIS; THE TENBY DAFFODIL. Yellow Trumpet. 1. Deep yellow self-color, broad, round petals, with rather short trumpet. A very distinct Daffodil. Fine for borders and very lovely when grown in pots. Height 14 in. 10 bulbs, 80 cts.; 100 bulbs, \$7; 1,000 bulbs, \$65.

OLYMPIA. Yellow Trumpet. 3. Twisted perianth of deep primrose-yellow; huge, straight trumpet of slightly deeper color, frilled at brim; an enormous flower, splendid for the garden or pot culture. Height 15 in. 10 bulbs, \$2.50; 100 bulbs, \$23.

ORANGE BUFFER. 1. Incomparabilis. Deep primrose perianth with long, oval, spreading petals; chrome yellow cup, edged orange-yellow. A very striking and satisfactory garden Daffodil of most sturdy growth; tall and early. Height 17 in. 10 bulbs, \$1.80; 100 bulbs, \$16.

ORANGEMAN. Incomparabilis. 3. Sulphur-white perianth, with spreading, star-like petals of perfect shape; chrome-yellow crown, deepening at brim to yolk-yellow, beautifully frilled and ruffled. A rarely beautiful flower and a splendid grower. Height 16 in. 10 bulbs, \$2.60; 100 bulbs, \$24. See illustration.



ORANGE PHENIX. Double Incomparabilis. 3. White, with reddish orange center; very double flower. Height 17 in. 10 bulbs, 80 cts.; 100 bulbs, \$7; 1,000 bulbs, \$65.

ORIFLAMME. Barrii. 2. Creamy white perianth of fine circular form, with broad petals of great substance; small cup of fiery red, finely crinkled. A very bright flower. Height 16 in. 10 bulbs, \$1.20; 100 bulbs, \$10.

ORNATUS. Poeticus. 4. Perianth pure white; cup margined bright crimson. A splendid variety for massing, and the best of the inexpensive sorts for forcing. Height 14 in. 10 bulbs, 55 cts.; 100 bulbs, \$4.50; 1,000 bulbs, \$40.

PAPER-WHITE GRANDIFLORA. Tazetta. Pure white; very fragrant. For forcing only. Cream Quality bulbs 15 cm. and over. 10 bulbs, 75 cts.; 100 bulbs, \$6.50; 1,000 bulbs, \$60.

PEDESTAL. Incomparabilis. 3. Pale primrose perianth, overlapping, of splendid substance; clear yellow cup, stained red and beautifully crinkled. A splendid new Daffodil for any purpose. Height 13 in. Single bulb, \$1.25; 10 bulbs, \$8.

PETER BARR. White Trumpet. 4. White perianth of rather loose and spreading form; huge trumpet of pale ivory-white, very long and beautifully recurving at brim. A flower of exquisite symmetry, fine substance and very noble character; one of the largest white Trumpets in our lists; strong grower and free bloomer. Height 15 in. Single bulb, \$1. See illustration.

PEVERIL. 3. Barrii. White perianth with broad, round petals; large, shallow cup of clear orange slightly deeper at edges. One of the few varieties which show an all-red cup in our climate; a very fine bit of color in the border. Height 15 in. 10 bulbs, \$1.50; 100 bulbs, \$13.

PRIMROSE PHENIX. Double Incomparabilis. 3. Pale primrose yellow, very double; a large flower on fairly good stem. This is a fine double Daffodil, especially valuable for cutting. Height 20 in. 10 bulbs, \$1.80; 100 bulbs, \$16.

PRINCESS MARY. Incomparabilis. 3. Pale primrose perianth, broad and spreading; very broad, and flatly expanding yellow cup, stained orange. A flower of very handsome form, and fine for borders or pot culture. Height 16 in. 10 bulbs, 80 cts.; 100 bulbs, \$7.

QUEEN BESS. Incomparabilis. 1. Spreading white perianth; large funnel-shaped cup of light yellow, well open at the mouth. An early variety of value for naturalizing or for pot culture. Height 15 in. 10 bulbs, 65 cts.; 100 bulbs, \$5.50; 1,000 bulbs, \$50.



Daffodils for Planting in Grass



WE HAVE used illustrations of naturalized Daffodils freely in the Blue Book in the hope of making more popular this method of growing these flowers. To help our friends further, Mr. Hunt suggests the varieties noted below as being most satisfactory for this purpose.

His special leaflet on this subject will be mailed on application.

Order Recommendation RR

Twenty-five bulbs of each for \$24.00

AUTOCRAT	LUCIFER
BEAUTY	LULWORTH BEAUTY
CONSPICUUS	ORNATUS
EMPRESS	ROSELLA
EVANGELINE	SIR WATKIN
FAIRY	WHITE LADY



1—Whitewell 2—Orangeman 3—Sirdar



- QUEEN OF THE NORTH.** Leedsii. 3. Broad, large perianth of clear, glistening white and remarkable texture; cup soft primrose-yellow, with narrow rim of sulphur-white, irregularly fluted. A flower of the highest quality and very clear color. Height 18 in. 10 bulbs, \$1.40; 100 bulbs, \$12. See illustration.
- RECURVUS.** Poeticus. 6. The old Pheasant's Eye. Perianth pure white, somewhat reflexing; cup margined deep scarlet; sweet-scented. Fine for massing in borders or in grass. Height 15 in. 10 bulbs, 55 cts.; 100 bulbs, \$4.50; 1,000 bulbs, \$40.
- RED BEACON.** Barrii. 3. Broad perianth of great substance, ivory-white with pale sulphur tone at the base; fluted and frilled cup of most vivid orange-scarlet. A wonderfully striking flower because of its brilliant coloring. A good grower. Height 17 in. 10 bulbs, \$2.80; 100 bulbs, \$26. See illustration.
- ROSELLA.** Barrii. 3. Spreading white perianth, with rather long petals; small cup of chrome-yellow, rimmed orange. A fine variety in this class because of the sharp contrast in the color of the cup. Height 14 in. 10 bulbs, \$1.20; 100 bulbs, \$10; 1,000 bulbs, \$90. See illustration.
- RUGULOSUS.** Jonquil. 2. Self-colored rich yellow; very fragrant; three or four flowers on a stem; the best form of the single Campernelle Jonquil. Fine for borders or naturalizing, and the best for pot culture. Height 17 in. 10 bulbs, 65 cts.; 100 bulbs, \$5.50; 1,000 bulbs, \$50.
- RUGULOSUS PLENUS.** Double Jonquil. 2. Clear golden yellow. Fine for outdoors or pots. Height 13 in. 10 bulbs, 65 cts.; 100 bulbs, \$5.50; 1,000 bulbs, \$50.
- SALMONETTA.** Leedsii. 3. Perianth white, with long, oval petals; prettily fluted, open cup, of a soft apricot fading to peach with age. A distinct shade, and fine for outdoors. Height 16 in. 10 bulbs, 85 cts.; 100 bulbs, \$7.50.
- SEAGULL.** Barrii. 3. Broad perianth of the purest white and splendid substance; cup pale lemon-yellow, usually with tiny edge of light orange; an exquisitely beautiful flower, one of the loveliest of its class. Fine for outdoors or pot culture. Height 17 in. 10 bulbs, \$1.20; 100 bulbs, \$10.
- SILVER PHŒNIX; syn., SULPHUR PHŒNIX.** Double Incomparabilis. 3. Large, creamy white flower, with sulphur-yellow center. Height 18 in. 10 bulbs, 80 cts.; 100 bulbs, \$7; 1,000 bulbs, \$65.
- SILVER SPUR.** Bicolor Trumpet. 1. Large, spreading perianth of creamy white and long, golden yellow trumpet, beautifully recurved; splendid, broad foliage. An extra-fine Bicolor for forcing, being almost as early as Golden Spur. Height 17 in. 10 bulbs, \$1.40; 100 bulbs, \$12.



SIRDAR. Giant Leedsii. 3. Perianth pale sulphur-white, with broad, massive petals, the three inner ones seeming to lie upon the outer; large cup of soft primrose, deepening at brim and passing to creamy white, opening very wide at mouth and beautifully crimped. A grand flower of wonderful substance. Height 16 in. 10 bulbs, \$2.60; 100 bulbs, \$24. See illustration.

SIR WATKIN. Incomparabilis. 2. Perianth primrose-yellow; large and well-formed yellow cup; tinged deep yellow. A giant among the medium-crowned Daffodils. Height 21 in. 10 bulbs, \$1.20; 100 bulbs, \$10; 1,000 bulbs, \$90.

SOLEIL D'OR. Tazetta. Perianth golden yellow, with deep, brilliant orange eye. Several flowers on a stem. For growing indoors in bowls; not hardy out of doors. 10 bulbs, \$1.30; 100 bulbs, \$11.

SOUTHERN STAR. Barrii. 2. White perianth, with long, overlapping, pointed petals; very broad, flattened cup of bright yellow, banded with deep orange. A very graceful flower of fine color. Height 17 in. 10 bulbs, \$1.70; 100 bulbs, \$15.

SPARKLER. Incomparabilis. 2. Pale primrose-yellow perianth with somewhat pointed, spreading petals; large chrome-yellow cup, with orange edge and beautifully frilled. A good grower and fine, strong stem. Height 15 in. Single bulb, \$2.

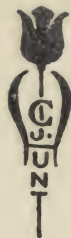
SPRING GLORY. Bicolor Trumpet. 1. Clear white perianth, with long petals of fine form; long trumpet of deep chrome-yellow, well reflexing at the brim. A very large flower of fine character. Height 16 in. 10 bulbs, \$1.80; 100 bulbs, \$16.

STELLA SUPERBA. Incomparabilis. 3. Spreading, white perianth, with narrow petals, large yellow cup; a large, graceful flower of great value for the border, for cutting, or late pot culture. Height 19 in. 10 bulbs, 65 cts.; 100 bulbs, \$5.50; 1,000 bulbs, \$50.

STELLA SUPERBA BUTTERFLY. Double Incomparabilis. 3. Spreading petals of sulphur white; very double yellow cup. A graceful double flower. Height 17 in. 10 bulbs, 85 cts.; 100 bulbs, \$7.50.

ST. OLAF. Leedsii. 3. Very broad, well rounded perianth, of unusually clear white; wide crown, quite flattened, of soft creamy yellow, with sulphur margin. A Daffodil of very interesting color and distinct form. Height 16 in. 10 bulbs, \$1.60; 100 bulbs, \$14.

THELMA. Poeticus. 4. Snowy white perianth, with almond-shaped petals, overlapping at base; large eye, light yellow, with narrow edge of bright crimson. A very large flower, noteworthy for the fine color in the cup; one of the finest Poeticus varieties in our list. Height 15 in. 10 bulbs, \$1.80; 100 bulbs, \$16. See illustration.



THE STAR. 2. *Incomparabilis*. Broad white perianth with overlapping petals; long cup of lemon yellow, edged orange-yellow. An early flower and one of the most free flowering we have seen; a good variety for garden use or forcing. Height 14 in. 10 bulbs, \$1.30; 100 bulbs, \$11.

✓ **TRESSERVE.** Yellow Trumpet. 3. Perianth primrose-yellow, slightly hooded; very large trumpet of rich canary yellow, very broad at the mouth and deeply flanged. Height 17 in. 10 bulbs, \$3.40; 100 bulbs, \$32.

VANILLE. Bicolor Trumpet. 2. Spreading, creamy white perianth, with rather narrow, pointed petals; bright yellow trumpet well expanded at the brim. This variety is noteworthy because it has a strong vanilla-like perfume; splendid for permanent planting in borders. Height 16 in. 10 bulbs, \$1; 100 bulbs, \$9.

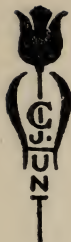
VAN SION; syn., **TELAMONIUS PLENUS.** Double Trumpet. 3. Golden yellow; the most popular Double Trumpet Daffodil for forcing. Outdoors, Van Sions are likely to become very green the second year after planting, there being something in our soil or climate which affects the color of this Daffodil. Height 13 in. 10 bulbs, 85 cts.; 100 bulbs, \$7.50; 1,000 bulbs, \$70.

VAN WAVEREN'S GIANT. Bicolor Trumpet. 1. Broad primrose perianth of campanulate form; bright yellow trumpet, with very large, open mouth, flanged at brim. A huge flower of vigorous habit and very showy character. Height 17 in. 10 bulbs, \$3.20; 100 bulbs, \$30.

✓ **VICTORIA.** Bicolor Trumpet. 3. Broad, creamy white perianth, with closely lapping petals; clear, rich yellow trumpet, very large and frilled at mouth. A very beautiful Daffodil, unsurpassed for forcing. Height 16 in. 10 bulbs, \$1.20; 100 bulbs, \$10.

WEARDALE PERFECTION. Bicolor Trumpet. 3. Solid, campanulate perianth of milk-white, with broad, overlapping petals; long, bold trumpet of soft primrose-yellow, well fluted at the mouth. A good grower and free bloomer, and thoroughly satisfactory in every way. Height 22 in. 10 bulbs, \$2.40; 100 bulbs, \$22. See illustration.

WHITE LADY. Leedsii. 3. Broad, white perianth of perfect form; small cup of pale canary, beautifully crinkled; free blooming, and well suited to outdoor planting or to pot culture and superb when used as a cut-flower. Height 20 in. 10 bulbs, 85 cts.; 100 bulbs, \$7.50; 1,000 bulbs, \$70. See illustration.



WHITE PRINCESS. White Trumpet. 4. Creamy white perianth, with broad, well-formed petals; long trumpet, of pale primrose, changing with age to creamy white. A flower of splendid substance for the garden. Height 15 in. 10 bulbs, \$2.60; 100 bulbs, \$24.

WHITE QUEEN. Giant Leedsii. 2. Broad, overlapping perianth of glistening white, with pointed petals; bold, straight crown of soft lemon, passing into white with age. A very large but refined flower of great substance; one of the first of the type, and still one of the best. Height 15 in. 10 bulbs, \$1.60; 100 bulbs, \$14.

WHITEWELL. Incomparabilis. 2. Flat creamy white perianth with very broad overlapping petals; large open cup of deep chrome-yellow. A very large flower of sturdy growth and wonderful substance. Height 18 in. 10 bulbs, \$2. 100 bulbs, \$18. See illustration.

WILLIAM GOLDRING. White Trumpet. 3. White perianth, drooping over the long trumpet; trumpet soft primrose passing to white. A very graceful flower, whose drooping habit has brought it the common name of the Swan's Neck Daffodil. A lovely variety for the border or for pot culture. Height 15 in. 10 bulbs, 85 cts.; 100 bulbs, \$7.50.

WILL SCARLETT. Incomparabilis. 5. Creamy white perianth somewhat loosely put together; widely expanded cup of brilliant orange-scarlet, elegantly frilled. A noteworthy variety, owing to the dazzling scarlet of the cup; a very good grower. Height 18 in. 10 bulbs, \$2.50; 100 bulbs, \$23.

W. P. MILNER. White Trumpet. 2. Creamy white perianth and trumpet; small flowers and narrow foliage. An exquisite little Daffodil for the rock-garden or for naturalizing, and a gem for pot culture. Almost pure white when forced. Height 11 in. 10 bulbs, 75 cts.; 100 bulbs, \$6.50; 1,000 bulbs, \$60.

YELLOW QUEEN. Yellow Trumpet. 3. Perianth canary-yellow with rather narrow petals; rich yellow trumpet of enormous size and much frilled at the mouth. Height 17 in. Single bulb, \$1.





1—Castile 2—Thelma 3—Bedouin



A Purple and Lavender Color Scheme for Early April



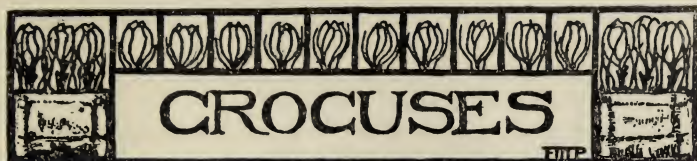
OUR friends who have not used Crocus bulbs in the border do not know how much finer they are than when merely dotted about on the lawn. Fifty bulbs of these eight varieties planted in broad patches among the low growing perennials in the front of your border, will delight you with their blending of soft shades.

Order Recommendation SS

50 bulbs of each for \$14.00

25 bulbs of each for \$8.00

BEAUTY	MATADOR
DOROTHEA	PEARL
FANTASY	RAPHAEL
MADAME MELBA	SURPRISE



Crocuses will always find a place in every garden because of their earliness. It is enough merely to see their cheerful blue and white and yellow in March or early April; the garden has indeed begun to be a thing of beauty. Whether Crocuses are planted as an edging to beds, in irregular breadths throughout the border, in careless patches in the grass, in masses among trees and shrubs, or, best of all, perhaps, on the slopes of terraces, their attractiveness is unchanged. In pots, planting twelve to fifteen corms in a 6- or 7-inch pan, they are very lovely and a revelation to those who have not grown them in this way. Named sorts should be chosen, for mixtures are never satisfactory.

The named varieties in the following list are all new seedlings far superior to most of the older kinds in size or color.

Detailed planting directions are included with the shipment of the bulbs.

Prices of all named varieties, 25 bulbs, \$1; 100 bulbs, \$3.50; 1,000 bulbs, \$30.

We do not sell less than 25 bulbs of any variety of Crocus.

BEAUTY. Pale lilac, inside soft violet-blue; large and early. Fine in pots.

DISTINCTION. Soft reddish violet, a very distinct color among Crocuses; small flowers.

DOROTHEA. Very soft lavender-blue; a fine self-color for pots; not a large flower.

EDINA. Striped mauve, on white ground, with white margin and purple base and stem; fine, large flower.

FANTASY. Grayish white ground, heavily striped dark purplish blue; large flower. A striking sort for pot culture and massing under shrubs.

HARBINGER OF SPRING. Shining dark purple; extra-large flowers. Very early.

HERO. Dark, glistening purple; very large flower. Superb for pots.

KATHLEEN PARLOW. Purest white; of fine substance; large flower.



- LORD DUNCAN. Very pale lavender-blue; a little later than Dorothea.
- MADAME MELBA. Pale mauve, striped dark violet; large flower and very early.
- MATADOR. Dark purple, shaded violet at center; large flower. Fine, profuse-blooming variety for pots.
- MINERVA. Lavender-blue, veined darker, inside soft lavender. Very fine for pot culture.
- PALLAS. White ground, with fine stripes of light lilac; large flower.
- PEARL. White, suffused dark lilac, edged white; very large, fine flower. Handsome in pots. Early.
- RAPHAEL. Soft lilac, tipped white; small flower but very distinct. Rather late.
- SURPRISE. White, faintly striped dark violet. Fine in pots as well as in the garden.
- TILLY KOENEN. Very fine, pure white, with bright orange anthers; flower of good substance, with dark stem.
- WHITE GIANT. Snowy white, a few inconspicuous stripes of violet on inside of petals. Fine for pots.
- LARGE YELLOW. Golden yellow. Better outdoors than when grown in pots. Particularly good for growing in the grass on the lawn. Extra-size corms.
- CREAM QUALITY MIXTURE. 25 bulbs, 60 cts.; 100 bulbs, \$2; 1,000 bulbs, \$16.





MISCELLANEOUS BULBS

Chionodoxa, Glory of the Snow

An early-flowering spring bulb for borders or rockwork. The bulbs are small and should be planted closely for effect. The flowers are borne loosely on a small spike 4 to 5 inches high.

GIGANTEA. Soft lavender-blue with whitish center. 25 bulbs, \$1.50; 100 bulbs, \$5; 1,000 bulbs, \$40.

LUCILIAE. Deep blue with white center. 25 bulbs, \$1.25; 100 bulbs, \$4.50; 1,000 bulbs, \$35.

Fritillaria

Very graceful bell-shaped pendent flowers on wiry stems and curiously marked. Very effective when planted in the grass among the Daffodils.

MELEAGRIS ALBA. White. 25 bulbs, \$2.50; 100 bulbs, \$8.50; 1,000 bulbs, \$70.

MELEAGRIS MIXED. 25 bulbs, \$2.25; 100 bulbs, \$7.50; 1,000 bulbs, \$65.

Galanthus, Snowdrops

NIVALIS. White, drooping flowers, with apple-green tips on the petals. 25 bulbs, \$1.25; 100 bulbs, \$4.50; 1,000 bulbs, \$35.

Muscari, Grape Hyacinths

Small round flowers, growing on the stem like small Hyacinths. Flowering in late April.

BOTRYOIDES ALBUM. Pure white. 25 bulbs, \$1.25; 100 bulbs, \$4; 1,000 bulbs, \$35.

BOTRYOIDES. Bright blue. 25 bulbs, \$1; 100 bulbs, \$3; 1,000 bulbs, \$20.

HEAVENLY BLUE. Bright blue and very fragrant. The largest and finest of the grape hyacinths but very scarce. 25 bulbs, \$1.50; 100 bulbs, \$5; 1,000 bulbs, \$40.



Scilla, Wood Hyacinth

Bears spikes of bell-like flowers, 15 inches high, during early June. Plant 5 or 6 inches deep in shady situations. They will grow under fir or pine trees.

CAMPANULATA BLUE. Beautiful porcelain-blue bells. 25 bulbs, \$1.25; 100 bulbs, \$4.50; 1,000 bulbs, \$35.

CAMPANULATA ROSE. Soft lilac-rose. 25 bulbs, \$1.50; 100 bulbs, \$5; 1,000 bulbs, \$40.

CAMPANULATA WHITE. Pure white with large bells. 25 bulbs, \$1.25; 100 bulbs, \$4.50; 1,000 bulbs, \$35.

Scilla, The Siberian Squill

Spikes of small, drooping bell-like flowers 3 to 4 inches in height. Fine for naturalizing under trees or in open woodland, and very successful in the rock garden. Flowers in early April.

SIBIRICA BLUE. Bright blue flowers. 25 bulbs, \$2; 100 bulbs, \$6; 1,000 bulbs, \$50.

SIBIRICA WHITE. Pure white. 25 bulbs, \$2; 100 bulbs, \$6; 1,000 bulbs, \$50.



CHESTER JAY HUNT INC.

LITTLE FALLS NEW JERSEY

THE CREAM OF HOLLAND IN SPRING-FLOWERING BULBS

Please enter my order for the following articles, to be delivered this autumn:

Name _____

Shipping Address _____

Mail Address _____

Ship to _____

Date of Order _____

I hereby authorize you to mail to me or to any other party, in my name, any and all articles, books, or other material, and to make any and all payments for such articles, books, or other material, and to make any and all other arrangements in connection with the above.

All my business correspondence should be sent to the above address.

QUANTITY	DESCRIPTION	PRICE
5	Albatross	2 00
5	" Adirondack	4 50
5	" Knappton	1 20
1	" Mountain	2 00
1	" Mrs. K. K. K.	2 00
1	" K. K. K.	1 50
10	" Tressure	3 40
		<hr/>

Amount brought forward

After July 15 it is impossible for us to
arrange for the cancellation of any order.

When remittance is sent with order, postal charges
should be added if shipment by parcel post is desired.

TOTAL

O CHESTER JAY HUNT, Inc.
LITTLE FALLS, NEW JERSEY

EASE SEND A COPY OF YOUR BULB CATALOGUE WITH MY
OMPLIMENTS TO

NAME

ADDRESS
(in full)

.....

SIGNED



