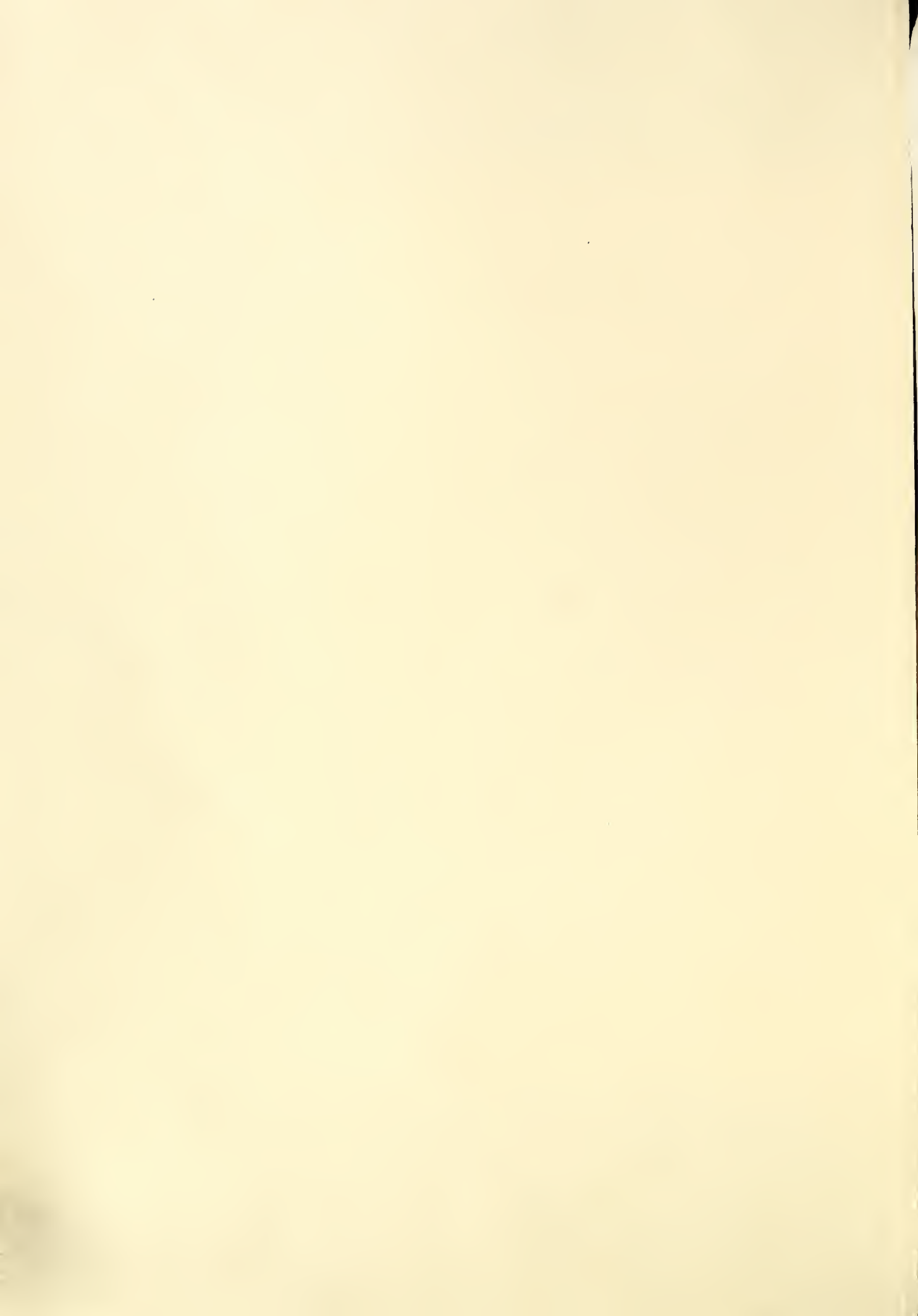


Historic, Archive Document

Do not assume content reflects current scientific knowledge, policies, or practices.



INDEXED

LIBRARY

RECEIVED

APR 20 1929

Department of Agriculture

Orchard Planters Catalog



1929

DELICIOUS

Maloney Bros. Nursery Co.

Incorporated

Dansville, New York



New York State's Largest Nurseries



45th Year Serving Orchard Planters



The future growth and development of trees depends in a large measure upon the root system. Trees dug the Maloney way by steam power insure the finest root system obtainable.

ORCHARD PLANTER'S ENDORSEMENT

Milton, Vt.,
April 16, 1928.

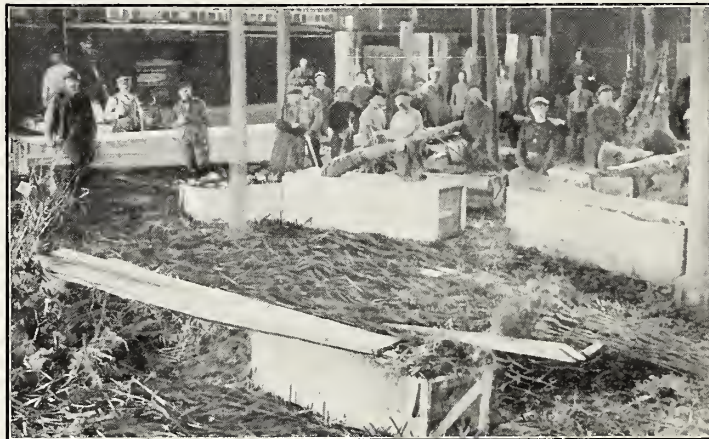
Gentlemen:

Your attractive offer interested me very much. I am enclosing my check for Rose Collection No. 86 and Perennial Collection No. 85 which I wish shipped to me at the above address.

Our apple orchard of 2,000 trees, most of which were bought from you, is doing very beautifully and the fruit, which has been shipped to thirty-seven states of the Union, has been enthusiastically praised for its delicious flavor and texture. We feel that much of the credit is due you for producing such high quality trees.

We have been very much pleased with the stock we have bought from you and are looking forward to receiving the rose bushes and perennials.

Sincerely yours,
R. I. MOODY.



Maloney Trees are Packed in Paper Lined Boxes by Men with Years of Experience.

Niagara Falls, N. Y.,
Feb. 8, 1928.

Gentlemen:

Please ship enclosed order to my farm at Lewiston, N. Y., so as to arrive for planting in the spring, about April 15th.

I now have 1000 of your Elberta Peach trees in bearing, and every one true to name. Your trees have always been of the finest quality, and your splendid packing methods account for the trees arriving in fine growing condition.

Maloneys will get all of my future orders.

Sincerely yours,
COLIN E. NICHOLS



MALONEY'S TREES—20 acre apple orchard composed of equal parts Stayman, Rome, McIntosh and Baldwin planted as one year whips in the spring of 1917. Planting arranged on a corner of 20 foot square with fillers to be removed when necessary. Fillers removed in the winter of 1928-29, leaving permanent trees on the corner of 40 foot square with semi-permanents in the center of the square, which probably will remain until the winter of 1933. Stayman, Rome and McIntosh have been in heavy bearing since the 1926 crop. Baldwins have been in light bearing since 1926 crop.

—Courtesy Pennsylvania State College Agricultural Experiment Station.



This Catalog is Condensed and Printed Purposely for
ORCHARD PLANTERS
 MAIL US YOUR REQUIREMENTS
FOR SPECIAL LOW PRICES

We are making low freight prepaid quotations to orchard planters on quantity lots of fifty or more trees for spring delivery for dependable, true-to-name, free-from-disease trees. Mail your list of needs, giving varieties, number of each and size trees desired and enjoy a stupendous saving. Send your list early so as not to lose out on these low prices.

GROWERS FOR 45 YEARS

10% Discount and Free Transportation. If everybody waited until the last minute no one could be properly served. Besides, orders are filled in rotation; the early orders enjoy the benefit of first selection. All Maloney stock is superior; first selection simply means an added advantage for you. Therefore, we allow 10 per cent discount on all cash orders mailed on or before April 1st. 5 per cent discount on or before April 15th. 3 per cent discount after April 15th.

Or we will allow 5 per cent discount for one-fourth cash with orders mailed on or before April 1st and balance C. O. D., paying Expressman, Mailman, or Freight Agent when delivery is made.

We Prepay Transportation on all orders of \$7.50 or more received during the entire spring season of 1929 to all points in the following states: Connecticut, Delaware, District of Columbia, Illinois, Indiana, Maine, Maryland, Massachusetts, Michigan, New Hampshire, New Jersey, New York, Ohio, Pennsylvania, Rhode Island, Vermont, Virginia, West Virginia. To the following states we will reimburse you for one-half transportation: Kentucky, Missouri, North Carolina, Wisconsin.

Our shipping season usually opens about the 25th of March and continues through May.

Rates—Less than ten at each rate. Ten to fifty, at ten rate. Fifty or more at hundred rate.

No. 2443
STATE OF NEW YORK CERTIFICATE
 Department of Agriculture and Markets
 BERNE A. PYRKE, Commissioner
CERTIFICATE OF INSPECTION OF NURSERY STOCK
 This is to certify that the nursery stock of Maloney Bros. Nursery Co., Inc., of Dansville, County of Livingston, State of New York, has been duly examined in compliance with the Agriculture and Markets Law and has been found to be apparently free from all injurious insects and plant diseases. This certificate is valid until September 1, 1929.
 Dated, Albany, N. Y., September 1, 1928.
 BERNE A. PYRKE, Commissioner.
 B. D. VAN BUREN, Director, Bureau of Plant Industry.

WE GUARANTEE OUR STOCK

To be absolutely True To Name.

To be positively free from disease.

To arrive at destination in a satisfactory condition. Should any arrive otherwise, we expect the consignee to notify us within five days after arrival and we will immediately duplicate the unsatisfactory items or refund your money.

OUR REFERENCES

Merchants & Farmers Bank, Dansville, N. Y.; Citizens Bank & Trust Co., Dansville, N. Y.; Livingston County Trust Co., Geneseo, N. Y.; Bradstreet Commercial Agency, Chicago, Ill.; R. G. Dun Commercial Agency, New York City. Any Business House in Dansville, N. Y.

Your Best Protection—Buy of Responsible People.

Peaches—Upland Grown

Propagated From Bearing Trees

	1 Year	Height	Diameter	Each	Ten	Hundred
Largest Size	1 Year	4 to 5 Feet	9-16 and up	\$0.65	\$5.00	\$32.50
Medium Size	1 Year	3 to 4 Feet	7-16 to 9-16	.55	4.50	27.50
Smaller Size	1 Year	2 to 3 Feet	5-16 to 7-16	.45	3.50	22.50

RATES—Less than ten at each rate. Ten to fifty at ten rate. Fifty or more at hundred rate.

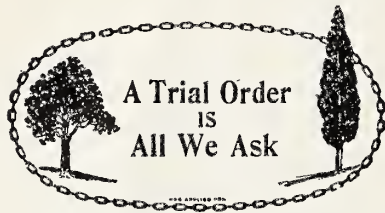
PARCEL POST—First-class, 2 foot, small size trees sent parcel post, postage prepaid, 40c each; 10 for \$3.00.

VARIETIES

Variety	Color	Season	Variety	Color	Season
Alexander	White	July	Greensboro	White	July
Belle of Georgia	White	August	Heath Cling	White	September
Carman	White	August	J. H. Hale	Yellow	August
Chair's Choice	Yellow	October	Kalamazoo	Yellow	September
Champion	White	August	Mountain Rose	Red	August
Crawford's Late	Yellow	September	Niagara	Yellow	August
Crawford's Early	Yellow	September	Rochester	Yellow	August
Crosby	Str'k	September	Salway	Yellow	October
Early Elberta	Yellow	September	Slappy	Yellow	August
Eclipse	Yellow	August	Smock Free	Yellow	September
Elberta	Yellow	September	South Haven	Yellow	August
Fitzgerald	Yellow	September	Yellow St. John	Yellow	August



Maloney's Apples Inspected for Trueness to Name



STATEMENT OF INSPECTION FOR TRUENESS-TO-NAME. 1928

Amherst, Mass., Aug. 20, 1928

To whom it may concern:

I have examined for trueness-to-name the salable apple stock now growing in the nurseries of Maloney Bros. Nursery Co., Inc., Dansville, N. Y., and I now declare that to the best of my knowledge and belief these trees are true to variety name as they stand in the nursery row.

(Signed)

A. P. FRENCH



So many of our customers disapproved of putting a wire through the tree to fasten the certification seal on, because of the injury it does to the tree, that we made arrangements with Mr. A. P. French of the Massachusetts Agricultural College to inspect our Apple trees, both one and two-year old, for trueness to name.

This gives you the same identical protection without causing damage to the trees. Fruit growers throughout the United States endorse this method.

Prices of All Varieties Upland Grown Standard Apple Trees Inspected

BUDED ON WHOLE BRANCHED ROOT FRENCH SEEDLINGS AND DUG BY STEAM POWER

		Height	Diameter		Each	Ten	Hundred
Largest Size	2 Year	5 to 7 Feet	3/4 and up	XXX	\$0.90	\$8.00	\$55.00
Medium Size	2 Year	4 to 5 Feet	5/8 to 3/4	XX	.80	7.00	45.00
Smaller Size	2 Year	3 to 4 Feet	1/2 to 5/8	X	.70	6.00	27.50
Largest Size	1 Year	3 to 5 Feet	9/16 and up	XXX	.80	7.00	42.50

PARCEL POST—First-class, 3 foot trees sent by parcel post, postage prepaid, for 50c each; 10 for \$4.50.

RATES—Less than ten at each rate. Ten to fifty at ten rate. Fifty or more at hundred rate.

WINTER VARIETIES

Variety	Color	Season	Variety	Color	Season
Baldwin	Red	November to April	Red Spy	Red	December to March
Ben Davis	Red	January to June	R. I. Greening	Green	December to April
Cortland	Red	November to February	Rome Beauty	Red	December to March
Delicious	Red	November to April	Smokehouse	Yellow	October to March
Fameuse	Red	October to December	Stark	Striped	January to May
Gano	Red	December to March	Stayman's Winesap	Red	December to April
Golden Russet	Yellow	November to April	Tolman Sweet	Yellow	November to April
Grimes' Golden	Yellow	December to April	Twenty Ounce	Yellow	October to January
Hendrick Sweet	Red	November to April	Wagner	Red	December to May
Hubbardston Nonesuch	Red	November to March	Wealthy	Red	October to January
Jonathan	Red	November to January	Winter Banana	Yellow	November to January
King	Red	November to April	Wolf River	Red	September to December
Mammoth Black Twig	Red	December to April	York Imperial	Red	November to February
McIntosh Red	Red	October to January			
Newtown Pippin	Yellow	November to May			
N. W. Greening	Yellow	October to April			
Northern Spy	Red	December to March			
Opalescent	Yellow	November to February			

BEST HARDY CRAB

Hyslop	Crimson	October
Transcendent	Striped	September to October

SUMMER VARIETIES

Variety	Color	Season
Early Harvest	Yellow	August
Red Astrachan	Red	July to August
Sweet Bough	Yellow	August
Williams Early	Red	August
Yellow Transparent	Yellow	August

AUTUMN VARIETIES

Variety	Color	Season
Duchess of Oldenberg	Str'k	August
Fall Pippin	Yellow	September to October
Gravenstein	Red	September to November
Maiden's Blush	Yellow	September to October
Pound Sweet	Yellow	October to November

CHERRY TREES

Prices, Upland Grown Sweet and Sour Cherry Trees

Budded on the Best Whole Branched Root French Mazzard and Mahaleb Stock

		Height	Diameter	Each	Ten	Hundred
Largest Size	2 Year	5 to 7 Feet	3/4 and up	\$0.95	\$8.00	\$65.00
Medium Size	2 Year	4 to 5 Feet	5/8 to 3/4	.85	7.00	55.00
Smaller Size	2 Year	3 to 4 Feet	1/2 to 5/8	.70	6.00	45.00
Largest Size	1 Year	4 to 5 Feet	5/8 and up	.85	7.00	55.00

RATES—Less than ten at each rate. Ten to fifty at ten rate. Fifty or more at hundred rate.

PARCEL POST—First-class, 3 foot trees sent by parcel post, postage prepaid, 65c each; 10 for \$5.50.

SWEET VARIETIES

Variety	Color	Season	Variety	Color	Season
Bing	Black	July	Napoleon	Yellow	June
Black Tartarian	Black	June	Schmidt's Bigarreau	Red	July
Governor Wood	Yellow	June	Windsor	Red	July
Lambert	Red	July	Yellow Spanish	Yellow	June

SOUR VARIETIES

Variety	Color	Season	Variety	Color	Season
Dyehouse	Red	June	English Morello	Dark Red	August
Early Richmond	Dark Red	June	Montmorency	Dark Red	June



QUINCE TREES

Upland Grown Budded on Whole Branched Root French Stock

	Age	Height	Each	Ten	Hundred
Largest Size	2 Year	4 to 5 Feet	\$0.90	\$8.00	\$65.00
Medium Size	2 Year	3 to 4 Feet	.80	7.00	55.00

PARCEL POST—First-class, 2-3 foot trees can be sent parcel post, postage prepaid, for 65c each; 10 for \$5.50.

RATES—Less than 10 at each rate. 10 to 50 at 10 rate. 50 or more at 100 rate.

VARIETIES

Variety	Color	Season	Variety	Color	Season
Champion	Yellow	October	Meech's Prolific	Yellow	October
Orange	Yellow	October			

STANDARD PEAR TREES

Upland Grown Budded on Whole Branched Root French Stock

	Age	Height	Diameter	Each	Ten	Hundred
Largest Size	2 Year	5 to 7 Feet	3/4 and up	XXX	\$0.95	\$8.50
Medium Size	2 Year	4 to 5 Feet	5/8 to 3/4	XX	.80	7.00
Smaller Size	2 Year	3 to 4 Feet	1/2 to 5/8	X	.60	5.00
Largest Size	1 Year	3 to 5 Feet	9-16 and up	XXX	.80	7.00

RATES—Less than ten at each rate. Ten to fifty at ten rate. Fifty or more at hundred rate.

PARCEL POST—First-class, 3 foot Pear Trees sent by parcel post, postage prepaid, for 50c each; 10 for \$4.50.

VARIETIES

Variety	Color	Season	Variety	Color	Season
Bartlett	Yellow	September	Koonce	Red	October
Beurre D'Anjou	Green	October	Lawrence	Yellow	November
Beurre Bosc	Yellow	October	Seckel	Russet	September
Clapp's Favorite	Yellow	August	Sheldon	Russet	October
Duchess	Yellow	October	Wilder	Yellow	August
Flemish Beauty	Russet	September	Winter Nelis	Yellow	December
Kieffer	Yellow	October			

PLUM TREES

Upland Grown Budded on Whole Branched Root French Myrobolan Stock

	Age	Height	Diameter	Each	Ten	Hundred
Largest Size	2 Year	5 to 7 Feet	3/4 and up	\$0.85	\$7.00	\$47.50
Medium Size	2 Year	4 to 5 Feet	5/8 to 3/4	.75	6.00	37.50
Smaller Size	2 Year	3 to 4 Feet	1/2 to 5/8	.65	5.00	27.50
Largest Size	1 Year	3 to 5 Feet	9-16 and up	.75	6.00	37.50

RATES—Less than ten at each rate. Ten to fifty at ten rate. Fifty or more at hundred rate.

PARCEL POST—First-class, small size, 3 foot trees sent parcel post, postage prepaid, for 60c each; 10 for \$5.00.

EUROPEAN VARIETIES

Variety	Color	Season
Archduke	Purple	September
Bradshaw	Red	August
Fell. Prune	Purple	September
German Prune	Purple	September
Grand Duke	Red	September
Imperial Gage	Green	August
Lombard	Red	August
Maloney Prune	Blue	September
Moore's Arctic	Blue	September

Variety	Color	Season
Niagara	Red	August
Shipper's Pride	Purple	September
Shropshire Damson	Purple	October
Yellow Egg	Yellow	September
York State Prune	Blue	August

JAPANESE VARIETIES

Variety	Color	Season
Abundance	Amber	August
Burbank	Purple	August
Red June	Red	August

DWARF APPLE AND PEAR TREES

Prices of All Varieties of Dwarf Apple and Pear Trees

	Age	Height	Diameter	Each	Ten	Hundred
Largest Size	2 Year	4 to 5 Feet	5/8 and up	XXX	\$0.85	\$7.50
Medium Size	2 Year	3 to 4 Feet	1/2 to 5/8	XX	.75	6.50

RATES—Less than ten at each rate. Ten to fifty at ten rate. Fifty or more at hundred rate.

PARCEL POST—2 to 3 foot dwarf trees can be sent by parcel post, postage prepaid, for 60c each; 10 for \$5.00.

Dwarf Apple Varieties same as Standard Apple.

Dwarf Pear Varieties same as Standard Pear.

GRAPE VINES

Price, 2 Year, No. 1, Strong Vines, except where otherwise noted, 25c each; 10 for \$2.00; 100 for \$18.50.

PARCEL POST—Grapes can be sent by parcel post, postage prepaid, for 5c per vine extra.

VARIETIES

Variety	Color	Price	Variety	Color	Price
Caco	Red	65c each; 10 for \$5.50	Delaware	Red	
Catawba	Red		Lucile	Red	
Concord	Black	20c each; 10 for \$1.50 100 for \$10.00	Moore's Early	Black	
Campbell's Early	Black		Niagara	White	
Daisy	Black	50c each; 10 for \$4.00	Portland	White	65c each; 10 for \$5.50
			Worden	Black	

Write for Orchard Planters' Low Prices



CURRENTS

Price of All Varieties of Currant Bushes

Extra Size, 2 Year, Strong Bushes, 40c each; 10 for \$3.50; 100 for \$25.00.

PARCEL POST—Currants can be sent by parcel post, postage prepaid, for 5c per bush extra.

Variety	Color	Variety	Color	Variety	Color
Cherry	Red	Perfection	Red	White Grape	White
Diploma	Red	Red Cross	Red	Wilder	Red

BLACK AND RED RASPBERRIES

Price of No. 1, Strong Plants, Best Selected Varieties, \$1.25 per 25; \$4.00 per 100; \$30.00 per 1000.

VARIETIES

Variety	Color	Variety	Color
Cumberland—New	Black	Loudon	Red
Cuthbert	Red	Plum Farmer	Black
Kansas	Black	St. Regis	Red

COLUMBIAN PURPLE RASPBERRIES

25 for \$1.75; 100 for \$5.00; 500 for \$20.00;
1000 for \$35.00.

GOOSEBERRIES

2 Year Bushes, 45c each; \$4.00 per 10.

VARIETIES:—Downing, Red Jacket.

BLACKBERRIES

Price of No. 1, Strong Plants, Well Selected Varieties,
\$1.75 per 25; \$5.50 per 100; \$40.00 per 1000.

VARIETIES:—Blowers, Eldorado, Mersereau, Snyder.

PARCEL POST—Raspberries and Blackberries can be sent
by parcel post, postage prepaid, for 2c per bush extra.

STRAWBERRIES

Prices of All Varieties

Express: \$1.00 per 25; \$2.50 per 100; \$15.00 per 1000.

Mailed Postpaid: \$1.25 per 25; \$2.75 per 100.

VARIETIES

Cooper	Excelsior	Gibson	Americus	Varieties Superb	Productive
--------	-----------	--------	----------	---------------------	------------

FALL BEARING VARIETIES

Express: \$1.50 per 25; \$3.75 per 100.

Mailed Postpaid: \$1.75 per 25; \$4.00 per 100.

GARDEN ROOTS

PARCEL POST—Garden Roots can be sent by parcel post, postage prepaid, for 1c each extra.

RHUBARB OR PIE PLANT

Champagne—Large, early, tender and fine. The very best
of all. 20c each; \$1.75 per 10; \$5.00 per 50.

ASPARAGUS

Price, 75c per 25; \$2.00 per 100; \$15.00 per 1000.

VARIETIES:—Conovers, Washington, Palmetto.

ORNAMENTAL TREES

- Bechtel's Crab—Price, 3-4 ft., \$1.25 each.
- Birch (Cut-Leaved Weeping)—Price, 4 to 5 ft., \$2.50 each.
- Catalpa Bungei—Price, 6 to 7 ft., \$2.50 each.
- Catalpa Speciosa—Price, 6 to 8 ft., 90c each; 10 for \$8.50.
8 to 10 ft., \$1.10 each; 10 for \$10.00.
- Elm (American)—Price, 8 to 10 ft., \$2.00 each; 10 for
\$17.50. 10 to 12 ft., \$2.50 each; 10 for \$22.50.
- Horse Chestnut (White Flowering)—Price, 4 to 5 ft., \$1.75
each.
- Maple (Ash-Leaved)—Price, 8 to 10 ft., \$1.50 each. 10 to
12 ft., \$2.00 each.
- Maple (Norway)—Price, 6 to 8 ft., \$2.50 each; 10 for
\$22.50. 8 to 10 ft., \$3.50 each; 10 for \$32.50. 10 to 12
ft., \$4.50 each; 10 for \$42.50.
- Maple (Silver-Leaved or Soft)—Price, 8 to 10 ft., \$1.75
each; 10 for \$16.00. 10 to 12 ft., \$2.25 each; 10 for
\$20.00.
- Maple (Schwedler)—Price, 6 to 8 ft., \$3.00 each.
- Maple (Sugar or Rock)—Price, 8 to 10 ft., \$3.00 each. 6
to 8 ft., \$2.50 each.
- Maple (Wier's Cut-Leaved)—Price, 8 to 10 ft., \$2.00 each;
10 for \$17.50. 6 to 8 ft., \$1.75 each; 10 for \$15.00.
- Mountain Ash (European)—Price, 6 to 8 ft., \$2.00 each.
8 to 10 ft., \$2.50 each.
- Mulberry (Downing)—Price, 6 to 8 ft., \$1.50 each; 10 for
\$12.50.
- Mulberry (Russian)—Price, 5 to 7 ft., 75c each; 10 for
\$6.50.
- Mulberry (Tea's Weeping)—Price, 5 ft., \$3.00 each.
- Poplar (Carolina)—Price, 6 to 8 ft., 50c each; 10 for
\$4.50; 50 for \$20.00. 8 to 10 ft., 75c each; 10 for \$6.50;
50 for \$25.00. 10 to 12 ft., \$1.00 each; 10 for \$9.00;
50 for \$32.50.

- Poplar (Lombardy)—Price, 6 to 8 ft., 75c each; 10 for
\$7.00. 8 to 10 ft., \$1.25 each; 10 for \$11.50.
- Prunus Pissardi (Purple-Leaved)—Price, 4 to 5 ft., \$1.00
each.
- Thorn (Paul's Double Scarlet)—Price, 4 to 5 ft., \$2.00
each.
- Willow (Babylonica)—Price, 6 to 8 ft., \$1.25 each.
- Willow (Golden)—Price, 6 to 8 ft., \$1.25 each; 10 for
\$10.00.

NUT TREES

- American Filbert—Price, 3 ft., 85c each; 10 for \$8.00.
- Black Walnut—Price, 5-6 ft., 90c each; 10 for \$8.00. 4-5
ft., 80c each; 10 for \$7.50.
- Butternut—Price, 4-5 ft., 85c each; 10 for \$7.50.
- Chestnut (American Sweet)—Price, 4-5 ft., \$1.00 each; 10
for \$9.00.
- English Filbert—Price, 3 ft., 85c each; 10 for \$8.00.
- Pecans—Price, 3-4 ft., \$2.00 each.
- Walnut (English)—Price, 3-4 ft., \$1.50 each; 10 for \$12.50.

HEDGE PLANTS

- Barberry Thunbergi—Price, 2 year, strong plants, well
branched, 18 to 24 in., 35c each; 10 for \$3.00; 100 for
\$17.50. 2 to 3 ft., 45c each; 10 for \$4.25; 100 for
\$22.50.
- Privet (Amoor River)—Price, 2 year, strong plants, well
branched, 18 to 24 in., 10 for \$1.50; 100 for \$10.00.
2 to 3 ft., 10 for \$1.75; 100 for \$12.50.
- Privet (California)—Price, 2 year, strong plants, well
branched, 18 to 24 in., 10 for \$1.00; 100 for \$6.00. 2
to 3 ft., 10 for \$1.25; 100 for \$8.00.



CLIMBING VINES

- | | | |
|---|--------------------------------------|--------------------------------------|
| American Ivy or Virginia Creeper — Price, 50c each. | Dutchman's Pipe—Price, \$1.00 each. | Matrimony Vine—Price, 60c each. |
| Ampelopsis Veitchi (Boston Ivy) — Price, 50c each. | Hall's Japan Honeysuckle—50c each. | Paniculata Clematis—Price, 50c each. |
| Bittersweet—Price, 60c each. | Henry Clematis—Price, 95c each. | Trumpet Vine—Price, 50c each. |
| | Jackmani Clematis—Price, 85c each. | Wisteria (Chinese Purple)—75c each. |
| | Mad. Andre Clematis—Price, 85c each. | Wisteria (White)—Price, 75c each. |

MALONEY'S PERENNIALS

Price of all Perennials, (except where otherwise noted),
25c each; 10 for \$2.25.

- | | |
|---|--------------------------|
| Anchusa (Dropmore) | June and July |
| Anemone (Queen Charlotte) | August Until Frost |
| Anemone (Whirlwind) | August Until Frost |
| Aquilegia (Columbine) | May to July |
| Baby's Breath (Gypsophila Paniculata) | Mid-season |
| Begonia (Flowering) | Blooms all Summer |
| Canterbury Bells (Campanula Medium) | July |
| Cardinal Flower | August and September |
| Chinese Lantern Plant | Late Summer and Autumn |
| Coreopsis Lanceolata Grandiflora | All Summer |
| Forget-Me-Not (Myosotis Palustris) | Early Summer |
| Foxglove, Digitalis | June to September |
| Gaillardia | Early Summer to November |
| Golden Glow (Rudebeckia) | August and September |
| Hardy Aster | Late Fall |
| Hardy Carnations— | |
| Double red and double yellow | July to Late Fall |
| Hardy Chrysanthemums— | |
| Bronze, pink, red, white, yellow | Late Fall Bloom |
| Hardy Garden Pinks (Dianthus Plumarius) | May and June |
| Helenium (Riverton Gem) | August and September |
| Heliopsis | July and August |
| Hibiscus (Mallow Marvel) | Fall |
| Hollyhocks— | |
| Double pink, white, yellow, scarlet | All Summer |
| Lemon Day Lily (Hemerocalis Flava) | May and June |
| Meadow Sage (Salvia Azurea Grandiflora) | Aug. and Sept. |
| Ornamental Grass (Eulalia) | |
| Painted Daisy—Red and pink | June, Throughout Summer |
| Pentstemon | Long Summer Blooming |
| Shasta Daisy | Throughout the Fall |
| Sweet William (Dianthus Barbatus) | May and June |
| Tritoma (Red Hot Poker or Flame Flower) | Aug. to Sept. |

CANNA BULBS

Bloom from Mid-summer Until Frost

- | | |
|---------------------------|----------------|
| Golden Eagle | Golden Yellow |
| King Humbert | Orange Scarlet |
| Mrs. Woodrow Wilson | Rose Pink |
| Nokomis | Crimson |

IRIS

May and June

- | | |
|---|--|
| Blue King | Blue |
| Gertrude | Purple |
| Her Majesty, Upper Petals Rose Pink, Lower Bright Crimson | |
| Honorabilis | Upper Petals Yellow, Lower Rich Mahogany |
| Sherwin Wright | Deep Golden Yellow |

LARKSPUR - DELPHINIUM

- | | |
|------------------|------------------|
| Belladonna | June Until Frost |
| Formosum | June and July |

PHLOX

July - October

- | | |
|-----------------------|----------------|
| Eclairer | Salmon Scarlet |
| Mrs. Jenkins | Pure White |
| Rhineland | Salmon Pink |
| Rijnstrom | Clear Pink |
| R. P. Struthers | Rosy Red |
| Von Hockburg | Cherry Red |

Bleeding Heart—Early Spring, 50c each; 10 for \$4.75.
Oriental Poppy—June, 35c each; 10 for \$3.25.

DAHLIA TUBERS

Blooms Late Fall

Price, 50c each; 10 for \$4.00; except as noted.

- | | |
|--------------------------------------|---------------|
| Champagne—Price, \$1.00 each | Golden |
| Floradora | Dark Red |
| Golden West | Yellow |
| J. H. Jackson | Maroon |
| Lydia Poole—Price, \$1.00 each | Lavender Pink |
| Marguerite Bouchon | Rose Pink |
| Perle de Lyon | White |
| The Grizzly—Price, \$1.00 each | Maroon |

GLADIOLI BULBS

Late Fall

Price, 15c each; 10 for 90c; 25 for \$1.75.

- | | |
|-----------------------|-----------|
| Baron Hulot | Dark Blue |
| Evelyn Kirtland | Rosy Pink |
| Herada | Blue |
| Peace | White |
| Schwaben | Yellow |
| War | Blood Red |

LILY BULBS

Price, 50c each; 10 for \$4.50.

- | | |
|---|--------|
| Speciosum Album—White | August |
| Speciosum Magnificum—Red | August |
| Speciosum Rubrum—White with Crimson | August |
| The Regal Lily (Regale)—White | July |

PEONIES

May and June

Price, 50c each, 10 for \$4.50 (except where otherwise noted).

- | | |
|------------------------------------|-------------|
| Delachie | Red |
| Eduhis Superba | Pink |
| Felix Crousse—75c each | Ruby Red |
| Festiva Maxima | White |
| Fragrans | Rose |
| Madam Drexel—75c each | Pink |
| Madame Gaudichau—\$3.00 each | Dark |
| Therese—\$3.00 each | Double Pink |

EVERGREENS

Balled and Burlapped

Arbor Vitae (American)—Price, 2-3 ft., \$2.00 each; 10 for \$18.50.

- | |
|--|
| Arbor Vitae (Globosa)—Price, 12-18 in., \$3.00 each. |
| Arbor Vitae (Golden)—Price, 18-24 in., \$3.50 each. |
| Arbor Vitae (Pyramidal)—Price, 2-3 ft., \$4.50 each. |
| Arbor Vitae (Tom Thumb)—Price, 15-18 in., \$2.50 each. |
| Douglas Fir—Price, 2-3 ft., \$3.25 each; 10 for \$30.00. |
| Juniper (Irish)—Price, 2-3 ft., \$3.00 each. |
| Juniper (Pfitzer's)—Price, 18-24 in., \$4.00 each. |
| Pine, Austrian—Price, 2-3 ft., \$3.25 each; 10 for \$30.00. |
| Pine, Scotch—Price, 2-3 ft., \$3.00 each; 10 for \$27.50. |
| Retinispora Pisifera—Price, 18-24 in., \$3.75 each. |
| Retinispora Plumosa (Plumed Cypress)—Price, 18-24 in., \$3.00 each. |
| Retinispora Plumosa Aurea (Golden Plumed Cypress)—Price, 18-24 in., \$4.00 each. |
| Spruce (Colorado Blue)—Price, 18-24 in., \$7.50 each. |
| Spruce (Black Hill)—Price, 2-3 ft., \$4.00 each. |
| Spruce, Norway—Price, 2-3 ft., \$1.75 each; 10 for \$15.00; 100 for \$135.00. |
| Taxus Cuspidata (Japanese Yew)—Price, 18-24 in., \$6.00 each. |
| Taxus Nana, Brevifolia (Dwarf Japanese Yew)—Price, 12-15 inches, \$4.00 each. |
| Virginiana Glauca (Blue Cedar)—Price, 2-3 ft., \$5.50 each. |



HARDY FLOWERING SHRUBS

2½ to 3½ Feet, 2 Year, 45c each; 10 for \$4.25, (except where otherwise noted).

PARCEL POST—Shrubs can be sent by parcel post, postage prepaid, for 5c per bush extra.

VARIETIES

Variety	Color	Height at Maturity	Variety	Color	Height at Maturity
Almond (Flowering)	Rose	4 ft.	Snowberry	Pink	4 to 5 ft.
Althea	Purple, red, pink, white	6 to 8 ft.	Spiraea Anthony Waterer	Red	3 ft.
Barberry (Red-Leaved)	Bronzy red. 75c ea., 10, \$7.00.	3 ft.	Spiraea Billardi	Blood red	4 to 5 ft.
Barberry Thunbergi	Red	3 ft.	Spiraea Callosa Rosea	Rose	4 to 6 ft.
Beauty Bush	Pink. \$1.65 ea., 3, \$4.50.	6 to 9 ft.	Spiraea Douglasi	Deep rose	4 to 6 ft.
Butterfly Bush	Lilac	3 to 4 ft.	Spiraea Thunbergi	Yellowish green	3 to 5 ft.
Calycanthus	Chocolate	5 ft.	Spiraea Van Houttei	White	5 to 7 ft.
Coralberry	Rose	4 to 5 ft.	Stephanandra Flexuosa	White	3 to 4 ft.
Deutzia, Crenata	White	5 to 6 ft.	Sweet Pepper Bush	Pure white	4 to 5 ft.
Deutzia, Gracilis	White	3 ft.	Tamarix (Africana)	Pink	4 to 5 ft.
Deutzia, Lemoinei	White	3 ft.	Weigela (Candida)	Pure white	5 to 7 ft.
Deutzia, Pride of Rochester	White	5 to 6 ft.	Weigela (Eva Rathke)	Bright red	5 to 7 ft.
Dogwood	Blood red	6 to 8 ft.	Weigela (Floribunda)	Dark crimson	5 to 7 ft.
Dogwood	White	6 to 8 ft.	Weigela (Rosea)	Deep rose	5 to 7 ft.
Dogwood	Yellow	6 to 8 ft.	Weigela (Variegated Leaved)	Silvery variegated leaves	4 to 5 ft.
Forsythia Fortunei	Deep yellow	6 to 8 ft.	Witch Hazel	Yellow	4 to 5 ft.
Forsythia Intermédia	Yellow	6 to 8 ft.			
Fringe	Light lavender	6 to 8 ft.			
Golden-Leaved Elder	Golden yellow	5 to 6 ft.			
High Bush Cranberry	White	6 to 8 ft.			
Honeysuckle Morrowi	White	4 to 6 ft.			
Honeysuckle	White	8 to 10 ft.			
Honeysuckle	Pink	8 to 10 ft.			
Honeysuckle	Red	8 to 10 ft.			
Honeysuckle	White	8 to 10 ft.			
Hydrangea A. G. A.	Snow white	4 to 5 ft.			
Hydrangea P. G.	Tree form. \$1.00 each.	3 to 4 ft.			
Hydrangea P. G.	White	6 to 7 ft.			
Kerria Japonica	Bright orange	3 to 4 ft.			
Lilac	Purple	6 to 8 ft.			
Lilac	White	6 to 8 ft.			
Pearl Bush	Pure white	6 to 10 ft.			
Quince (Japan)	Deep scarlet	5 to 6 ft.			
Snowball (Common)	White	8 to 10 ft.			
Snowball (Japan)	White	6 to 7 ft.			

LILAC—Double Flowering

Variety	Each
Belle De Nancy—Brilliant satiny rose	\$1.00
Chas. Joly—Deep reddish purple	1.00
Mme. Lemoine—Pure white	1.00
President Grevy—Blue	1.00

PHILADELPHUS (MOCK ORANGE OR SYRINGA)

Variety	Height Maturity
Coronaris flore-pleno—Pure white	6 to 8 ft.
Folius Aureus—Yellow and white	3 to 5 ft.
Lemoinei—White	6 to 8 ft.
Nivalis—White	5 to 6 ft.
Virginal—White	5 to 7 ft.

ROSES

Price of All Varieties, Strong Bushes, 2 Year, No. 1, 75c each; 10 for \$7.00.

PARCEL POST—Roses can be sent by parcel post, postage prepaid, for 5c per bush extra.

HYBRID TEA ROSES

Briarcliff	Pink
British Queen	White
Butterfly	Pink
Columbia	Pink
Crusader	Crimson
Dame Edith Helen	Pink
Edward Mawley	Deep crimson
Etoile De France	Red
Francis Scott Key	Red
General McArthur	Crimson scarlet
Gruss An Teplitz	Scarlet
H. V. Machin	Scarlet crimson
J. L. Mock	Silvery pink
John C. Mensing—\$1.50 each	Rose pink
K. A. Victoria	Creamy white
Killarney Pink	
Killarney White	
Laurent Carle	Carmine
Lord Charlemont—\$1.50 each	Crimson
Los Angeles	Flame pink
Miss Lolita Armour	Coral red
Mme. Jules Bouche	White
Mrs. A. R. Barraclough	Pink
Mrs. Calvin Coolidge	Yellow
Mrs. Aaron Ward	Golden orange
Ophelia	Light salmon
Premier	Dark pink
Red Radiance	Brilliant crimson
Rev. F. Page Roberts—\$1.50 each	Coppery red
Rose Marie	Rose pink
Sensation	Scarlet crimson
Souvenir de Claudius Pernet	Yellow
Sunburst	Cadmium yellow

George Arends	Pink
Harrison's Yellow	
J. B. Clark	Deep scarlet
Mad. Gabriel Luizet	Silvery pink
Magna Charta	Pink and carmine
Margaret Dickson	White
Paul Neyron	Deep rose
Prince Camille De Rohan	Dark crimson
Ulrich Brunner	Light red
F. J. Grootendorst	Red

CLIMBING ROSES

Price, 2 Year, No. 1 Bushes, 50c each; 5 for \$2.35.

Crimson Rambler	Crimson
Dorothy Perkins	Shell pink
Excelsa	Scarlet crimson
Paul's Scarlet Climber	Scarlet
Silver Moon	White
Tausendschon	Pink of various shades
Veilchenblau	Light lilac
White Dorothy	
Yellow Rambler	

DWARF POLYANTHA—Baby Roses, Everblooming

Price, 75c each; 10 for \$7.00.

Called the "Baby Rambler" on account of their very short, close growth. The flowers are borne in clusters of twenty or more. Bloom from May to November. Colors, crimson, pink and white.

TREE OR STANDARD ROSES

Price, \$2.75 each.

Frau Karl Druschki	White	Dame Edith Helen	Pink
Gen. Jacqueminot	Crimson	Red Radiance	Brilliant crimson

READ WHAT MR. U. P. HEDRICH OF THE NEW YORK AGRICULTURAL EXPERIMENTAL STATION, GENEVA, N. Y., SAYS OF THE NEW CORTLAND APPLE.

I write to assure fruit growers who have planted Cortland in regions where McIntosh succeeds, or those who contemplate planting it, that they need have no fear of disappointment in the new variety. Cortland was fruited on the grounds of this station 10 years before trees were offered for sale. During this period of probation, hundreds of experienced fruit growers compared it with McIntosh, and pronounced it equal or superior in quality and appearance to that variety.

Improved Methods of Propagating Accounts for Low Prices
Awaiting Orchard Planters on Request