

京都桂仙洞油所二條
御寫真及實測圖集

第一集

10集迄

5集缺



始





石道 寺内
Some leads for hand walking, inside of gate, to the Yōmeiji, South Palace.



御園御所 御花亭より其石の御庭
View of garden from Mikoyonji, South Palace



秋田縣庁 神宮寺 延暦寺
General view (general view) of Kiyomizu-dera, on pavilion at the Nijo Palace.



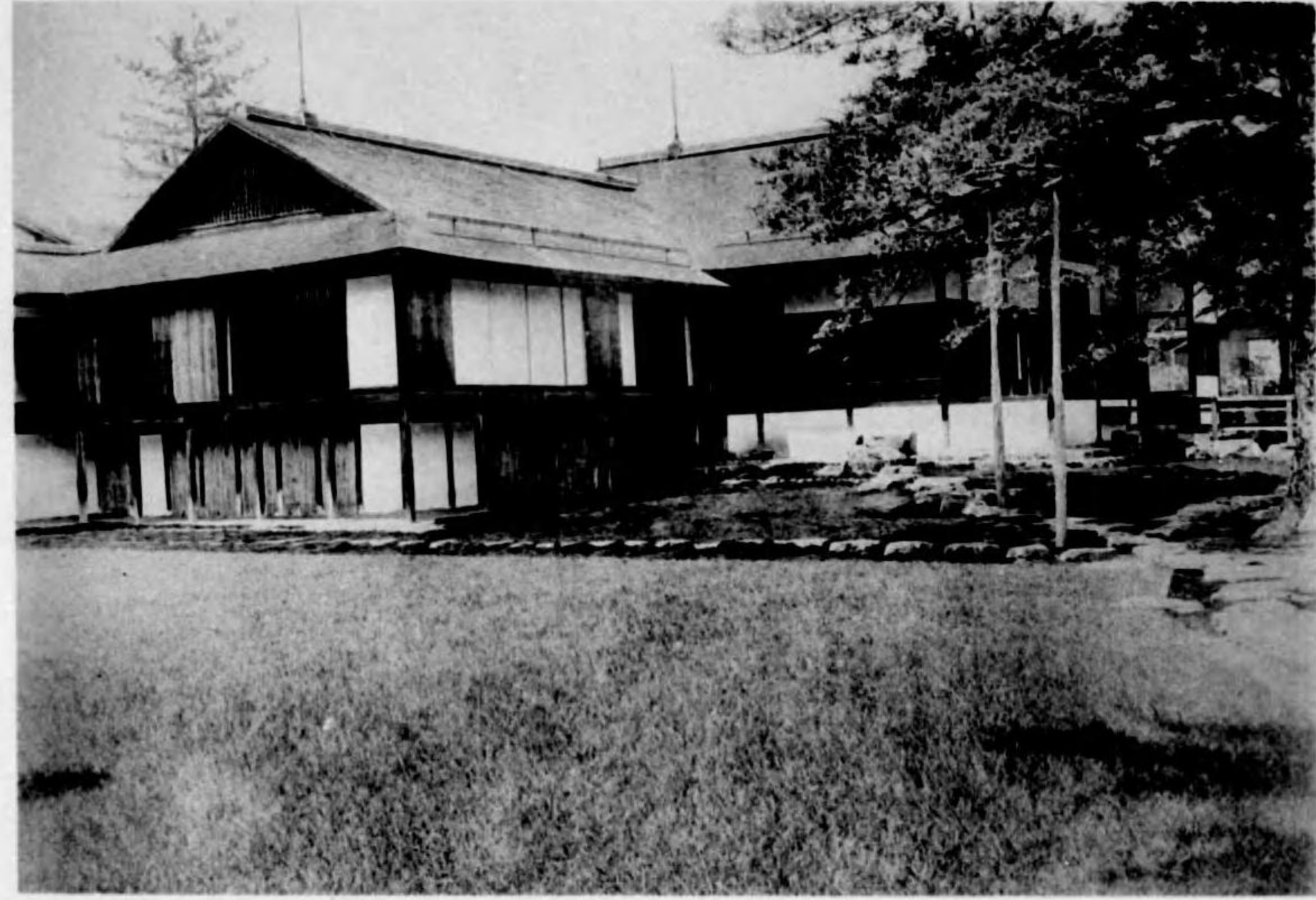
石燈籠
More lanterns in the garden of Saint Yohann



吳國卿所 攝在亭內部 景鏡照
A window, inside of Seikwan, South Palace.



松尾御所 式部亭 習道 松尾手洗
Stone lantern and stone basin attached to the *Kyōdō* (waiting booth) of Yoshino-jo, South Palace.



桂宮 西南の角の御殿
South-western corner of Katsura-gu-in, Katsura Detached Palace.



後醍醐天皇御宇 四國 藤子口
Back-entrance of Mikawa-ji, West Japan.

夜未已
臥醉花影
雲霧滿人
襟袖如
濯魄於西
唐李白題
用郭子華
書堊山台
揚京刻后
時萬曆戊
子七月

A stone with a Chinese poetry, printed from stone, hung at Sakurayuki, South Palace.



仙洞御所 御花亭 障子 御座石 中庭 庭石 千鳥
A mandarin in the garden of Nijo-jo, Kyoto, Japan.



桂樹宮 池原より見ゆる
View of garden, Katsura Detached Palace.



和歌山縣 又新寺 其在中門
Gate of Yishin-ji, Sasebo Palace.



林園式 御中御殿 遠望全景
General view (north-side) of Ginkōjō at the Katsura Detached Palace.



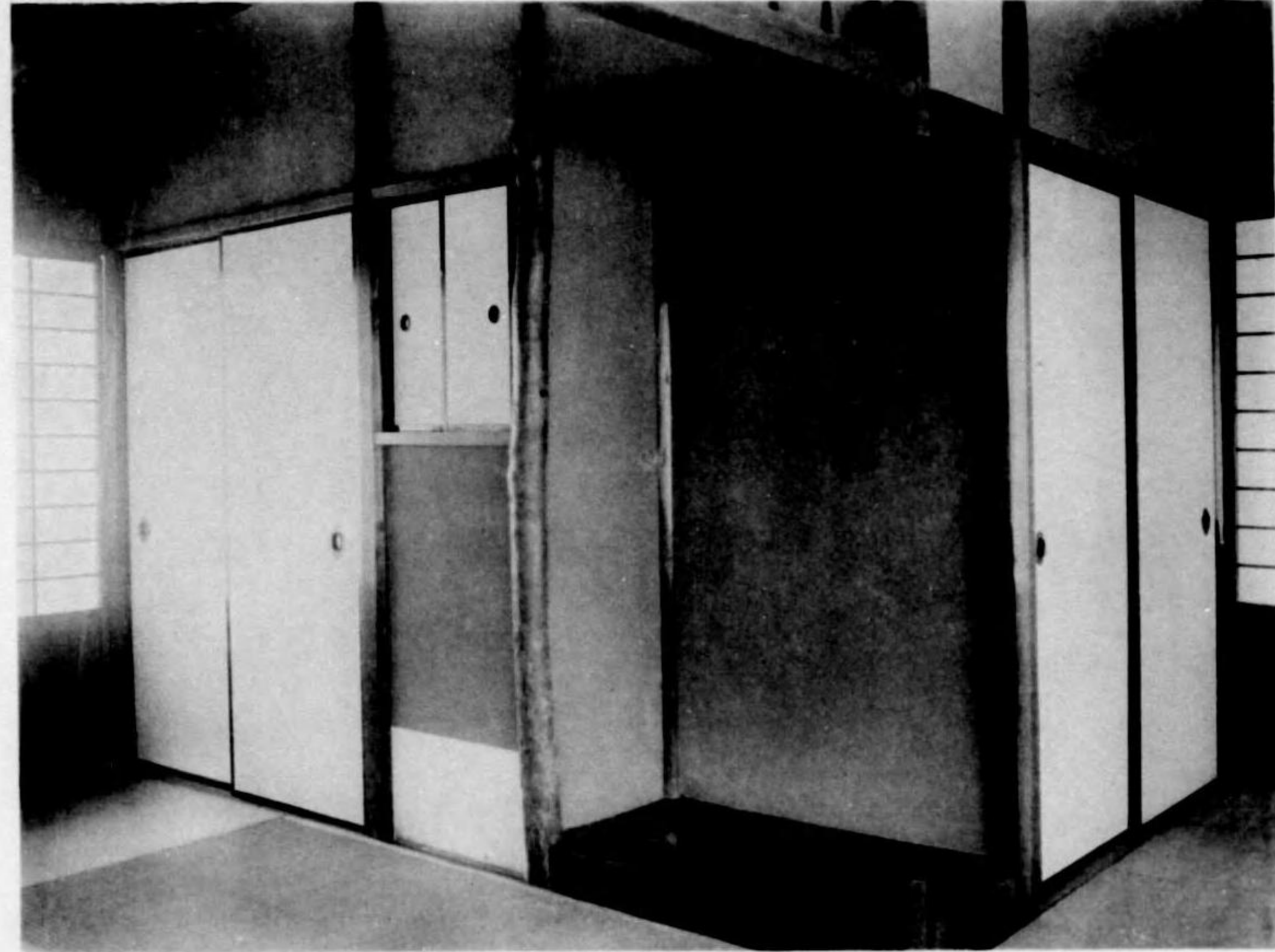
阿波國 又野亭 櫻井
Awa no Kuni, Atono-ya, Sakurai



仙居樓前 照在亭 東北隅外郭
View of north-west corner, Southwest, South Palace.



Yakushiji-ya (Yakushiji-ya) at the foot of the mountain.



仙洞御所 障子室
Agora of Sakayuki, South Palace.



福岡県庁 本庁舎 福岡市
General view (outside) of Sakamoto, Fukuoka Prefecture

終