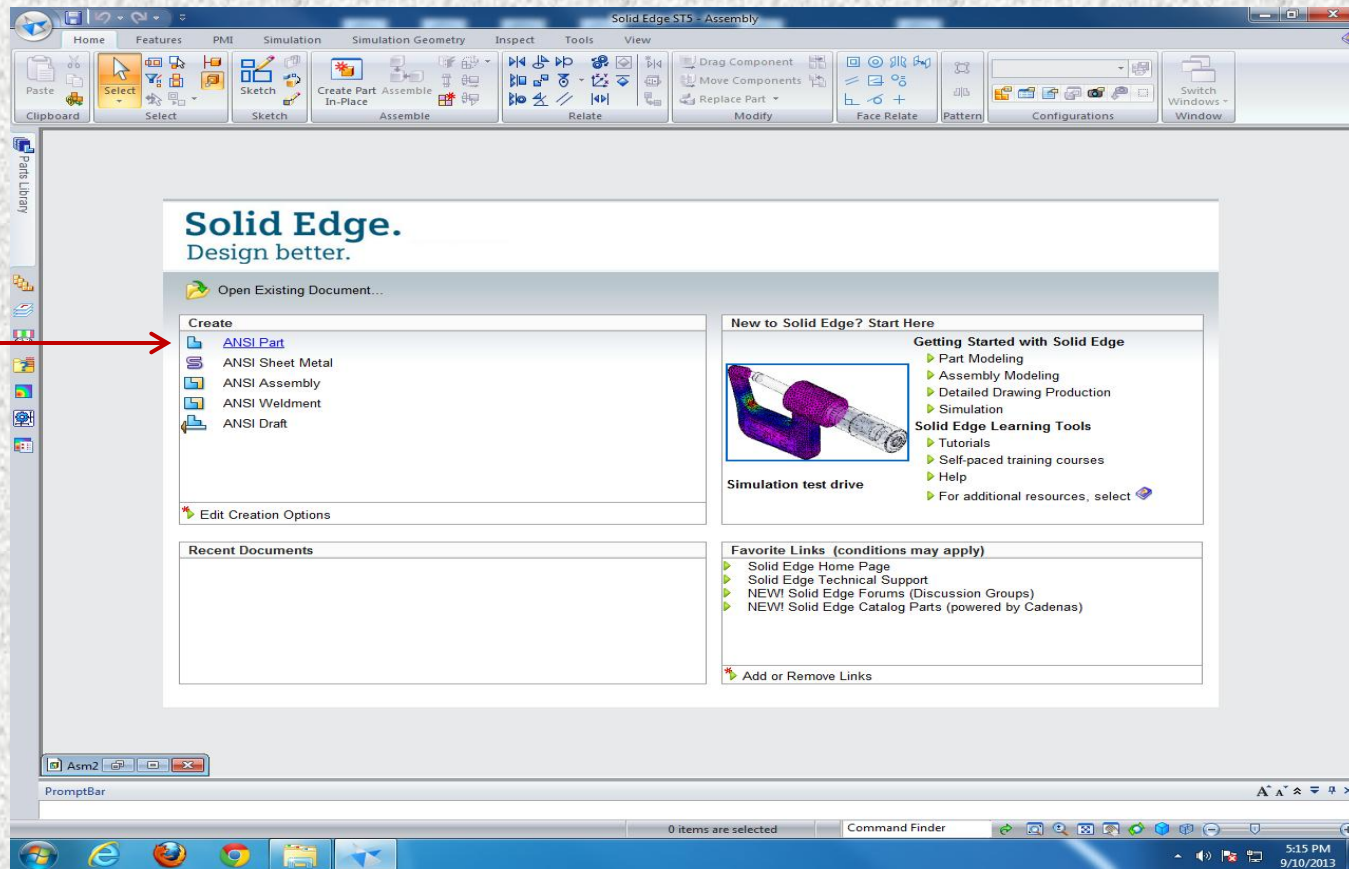


Solid Edge ST5

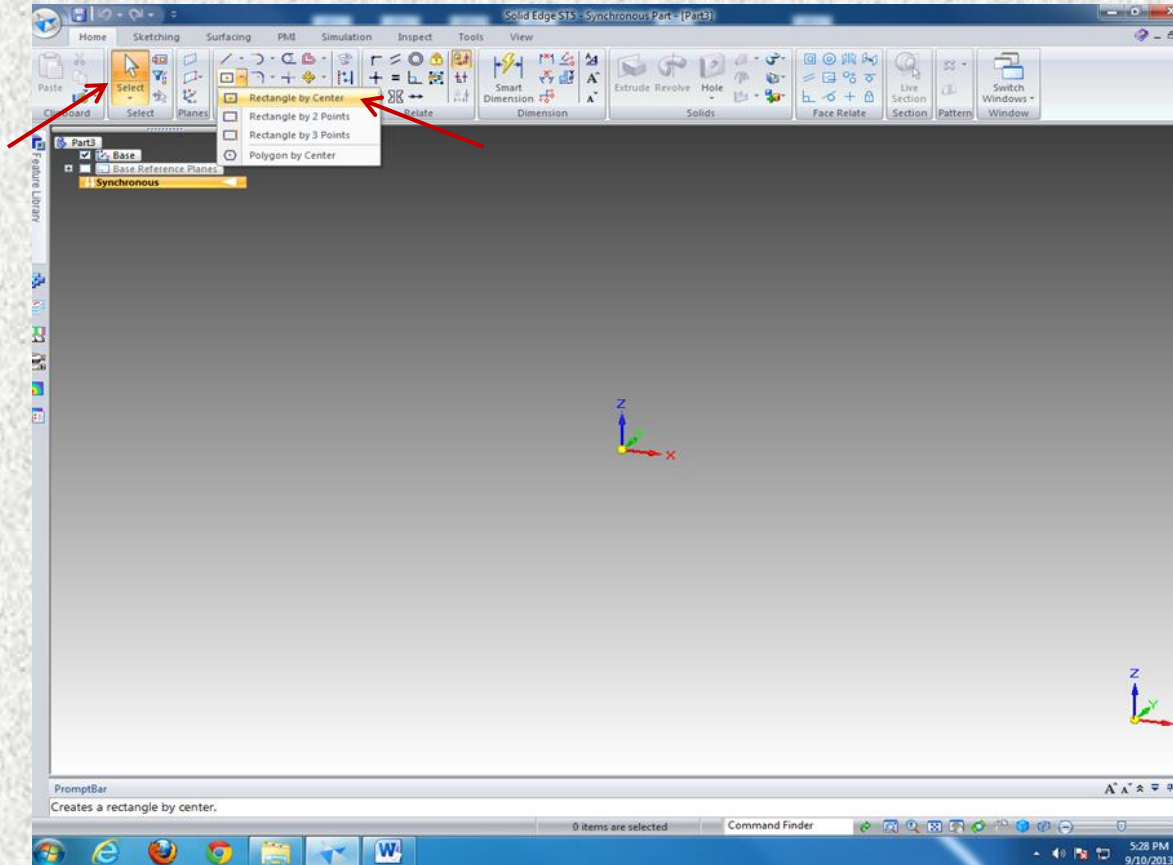
building a 3D Model

By
Lloyd Martin
and
Janel Fishpaw



The opening page for the program

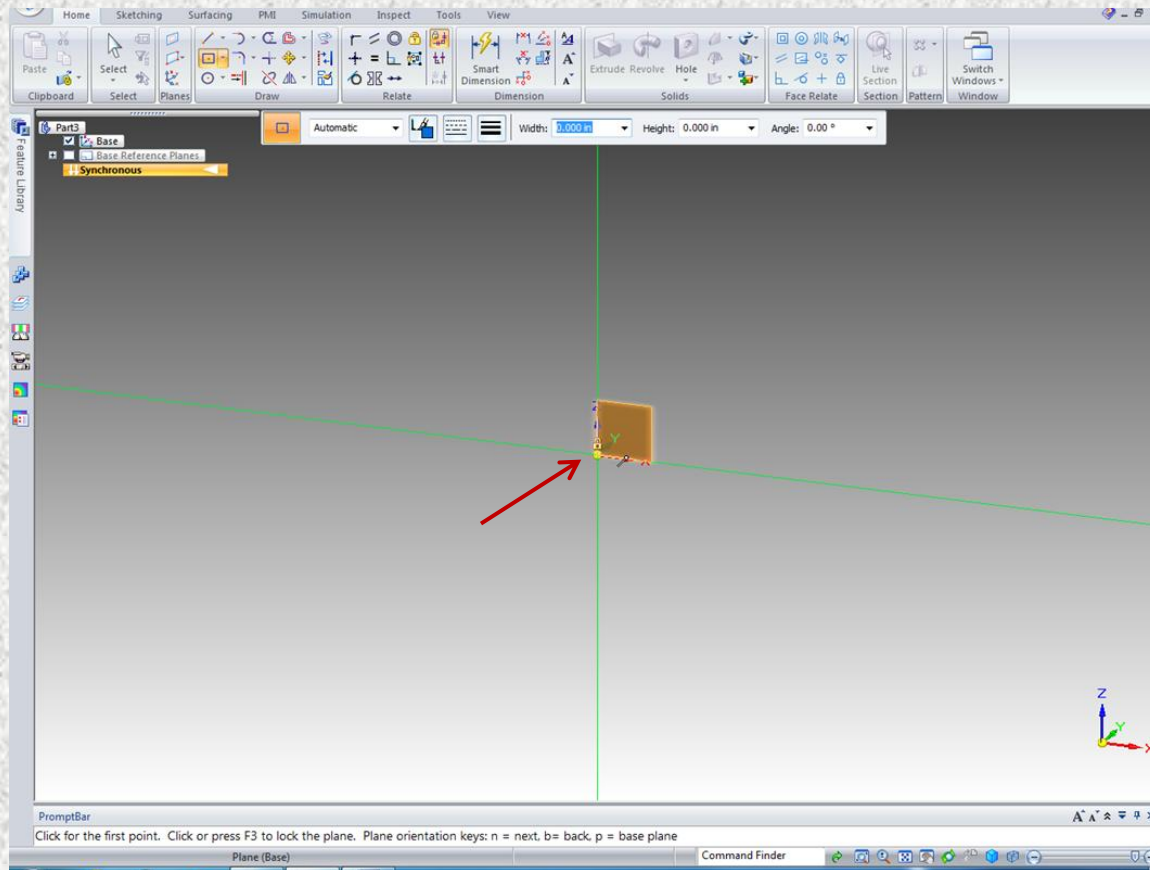
By selecting ANSI Part a new project page will open



Selecting the basic shape

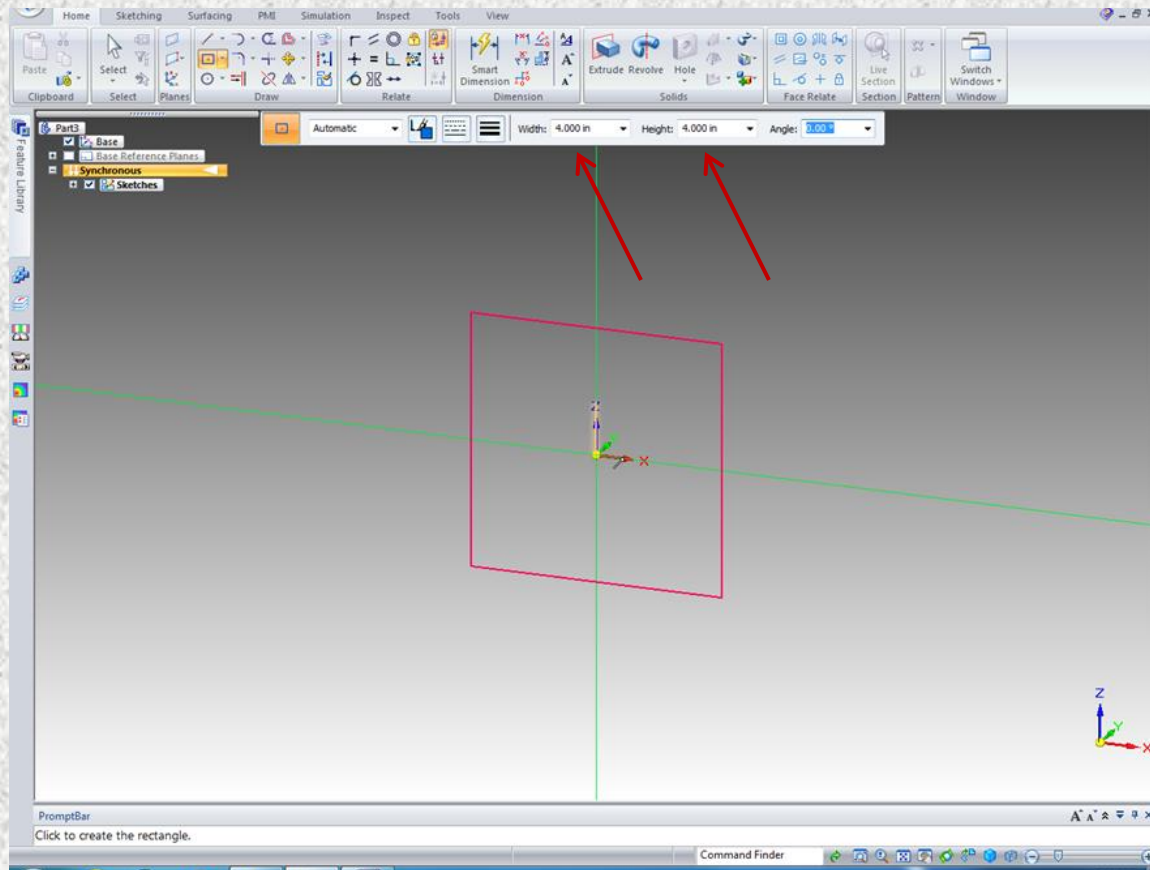
Using the arrow cursor select the rectangle button

Select the rectangle by center



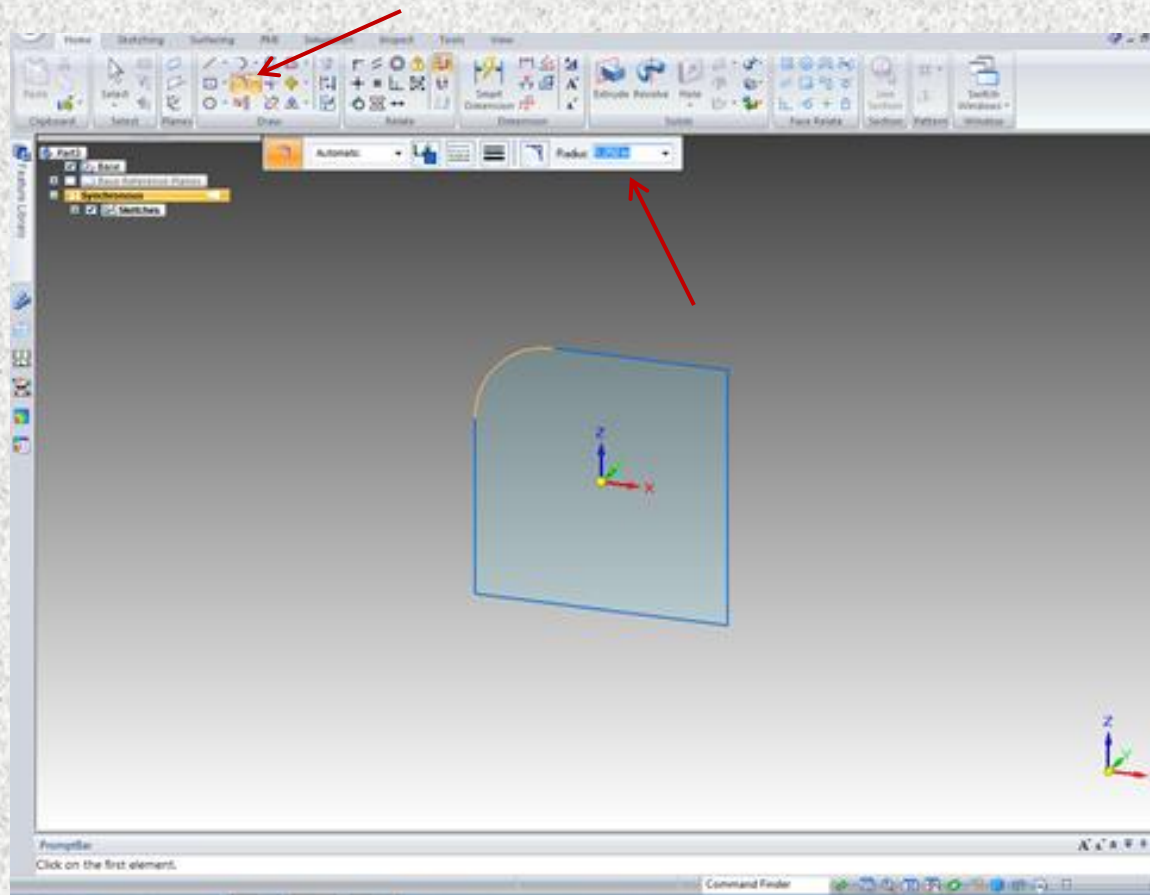
Building your part

Left click the cursor at the origin of the x y axis



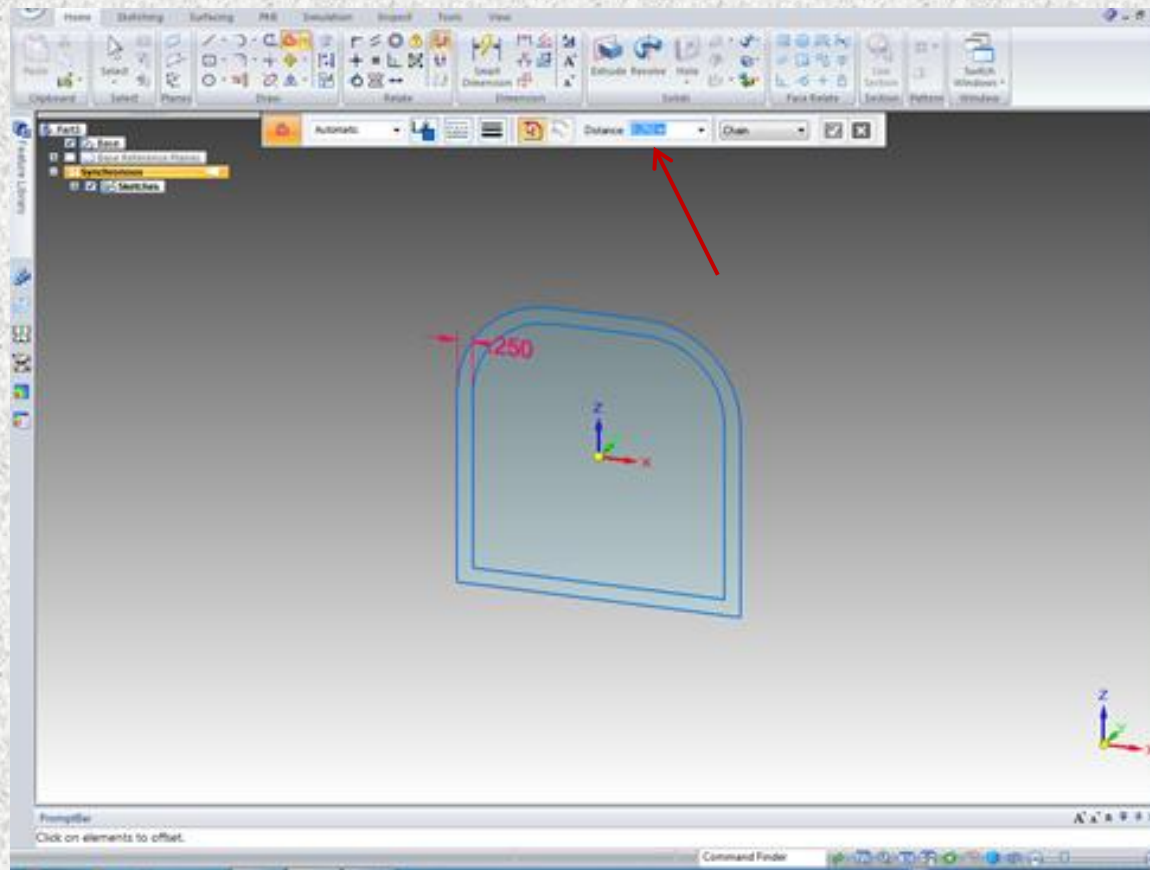
Sizing your part

Typed in the height and width at 4 in to form a square



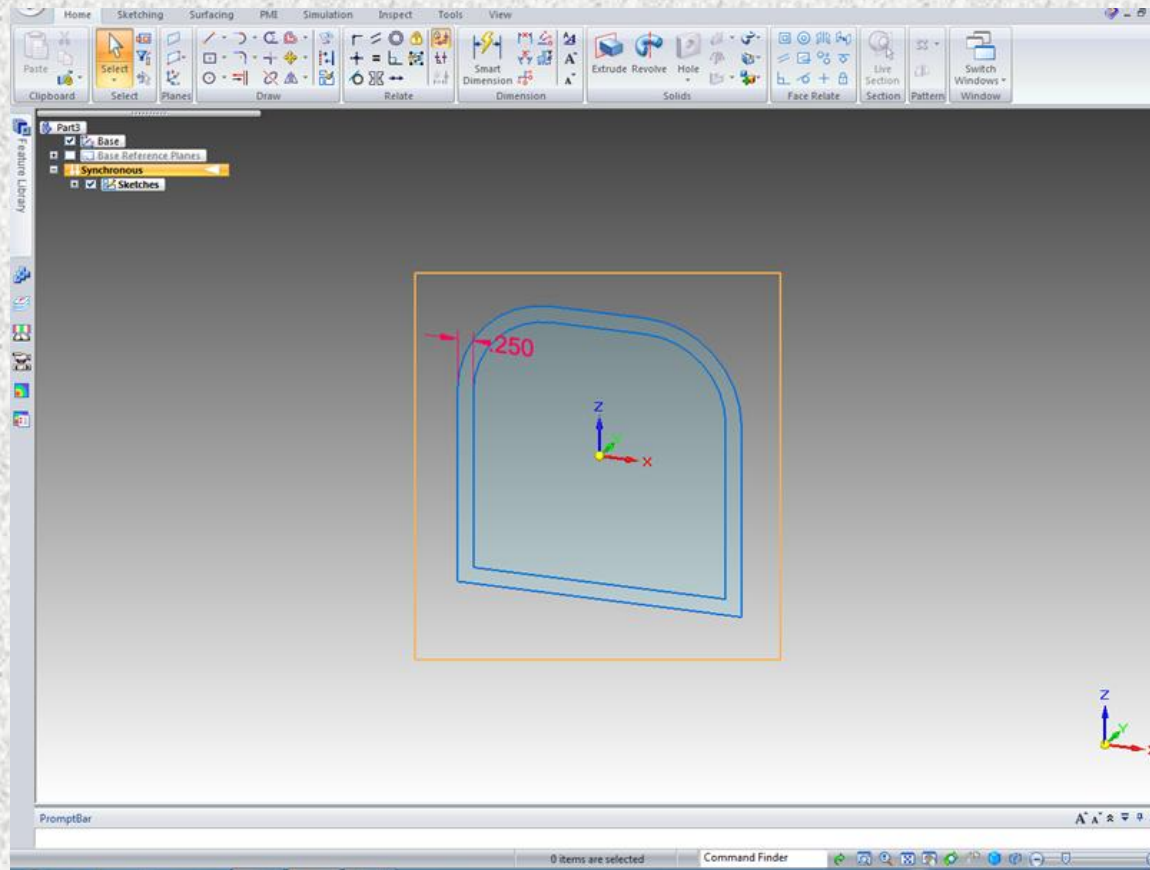
Filleting the edges

Using the fillet tool in the draw menu. Selecting the left side then the top portion of the side will automatically create the arch. We made the radius 1.25 in. The fillet was replicated for the right side using the same technique.



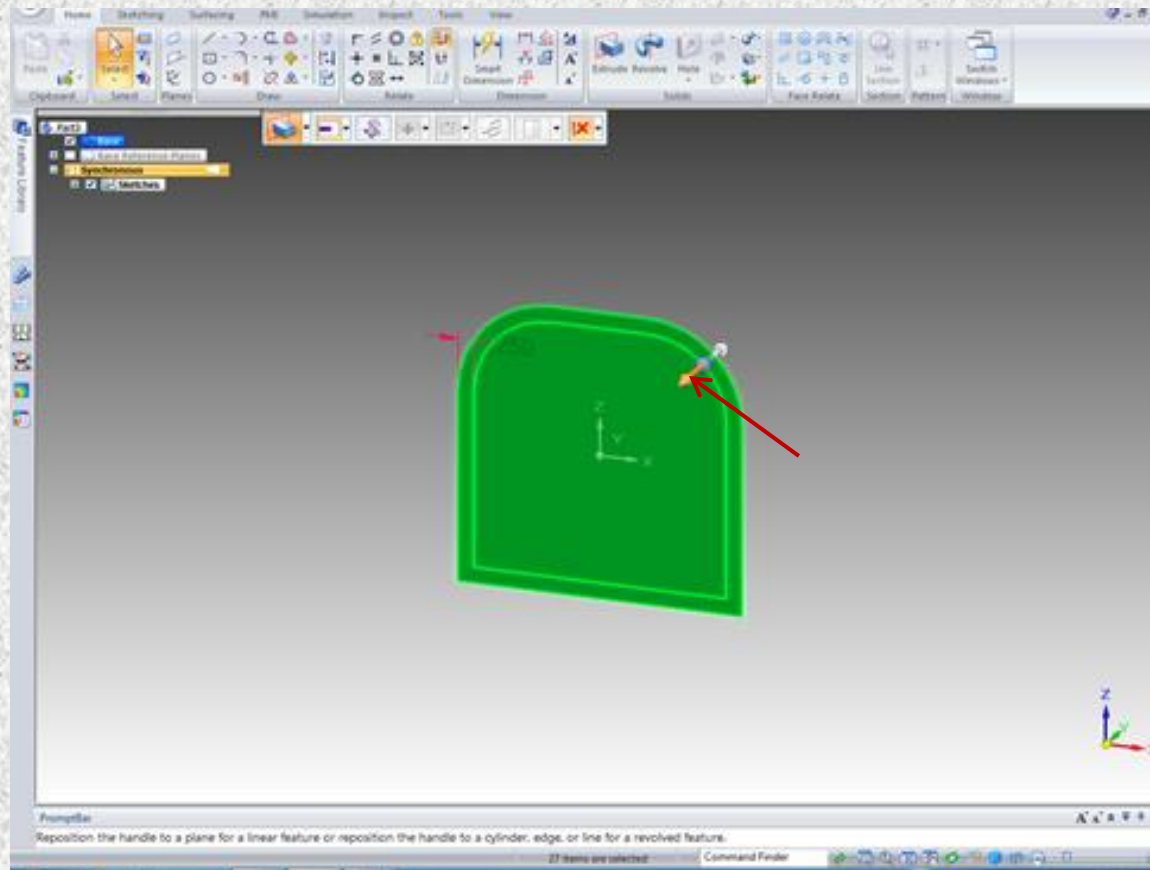
Offsetting the part

Using the offset tool in the drawing group the outside perimeter was offset by 0.25 in



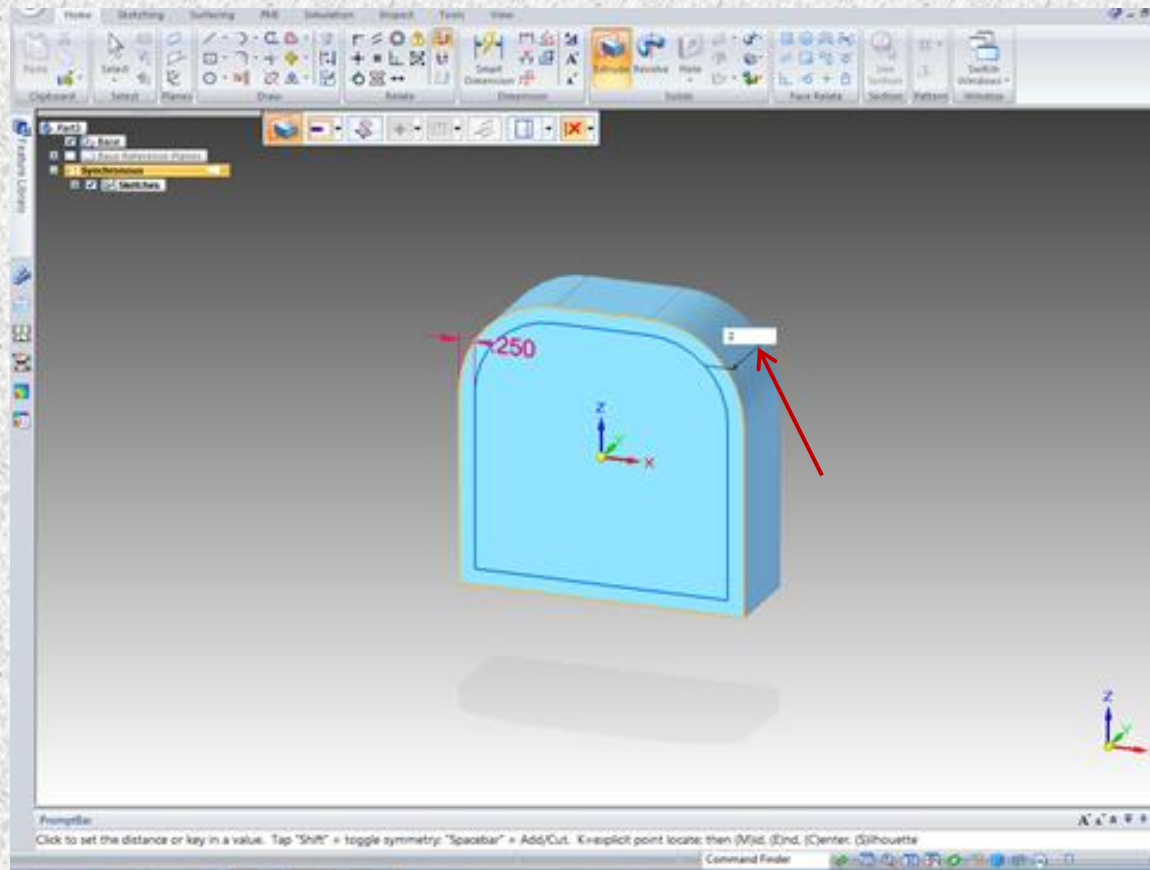
Highlighting the part

Using the select tool we clicked and dragged to highlight the part



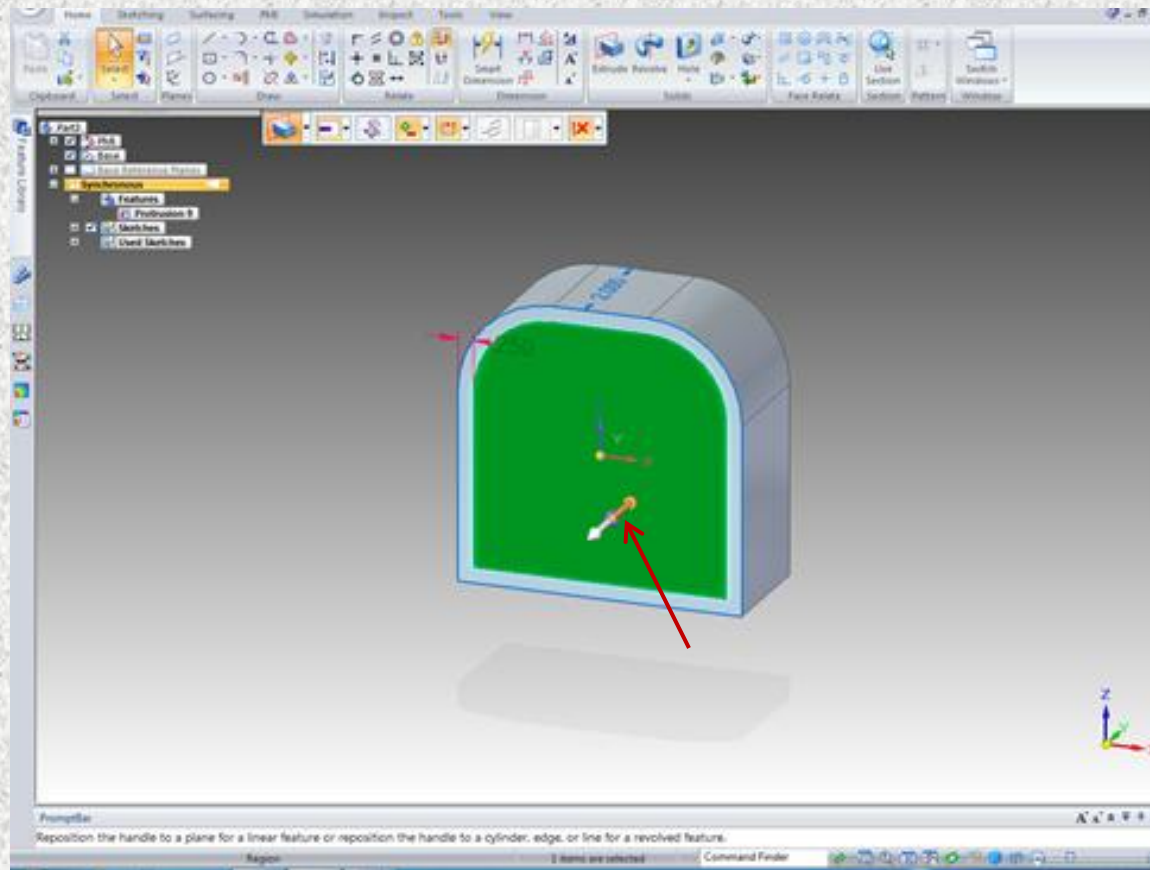
Extruding

With the object selected click the extrude arrow to extrude the entire object.



Extruding

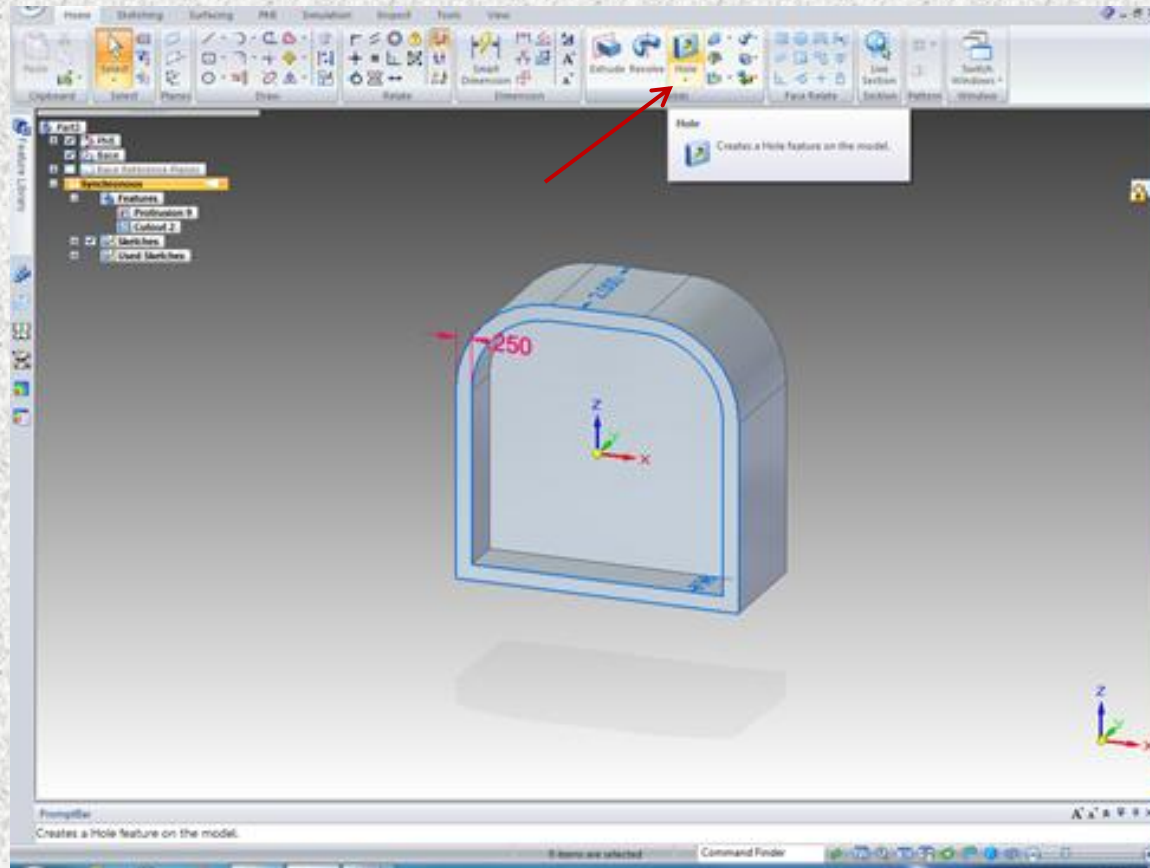
The object was extruded 2 in which was typed into the measurement box that appears while extruding.



Changing the inner plane

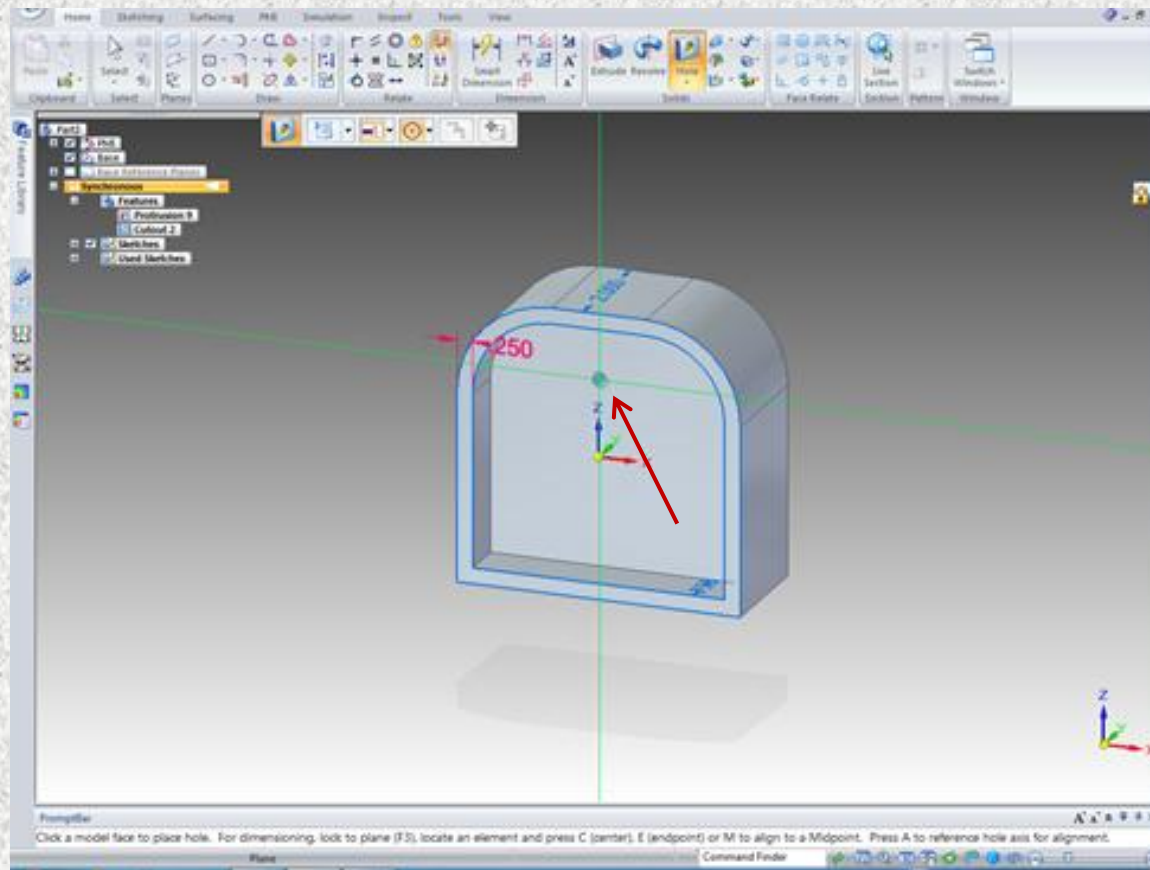
Using the select tool highlight the inner plane

Using the extruding function the inner plane was recessed 0.75 in



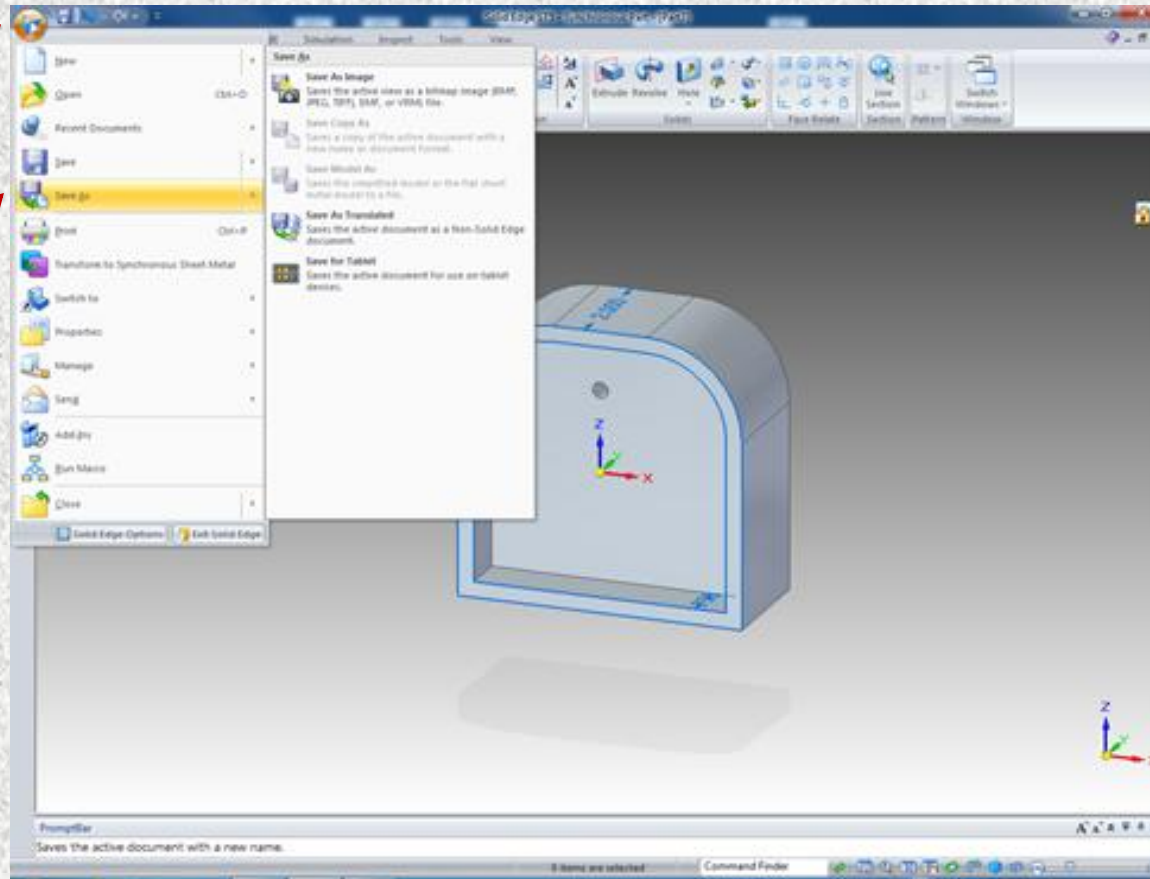
Adding a hole

In the solids group the hole function was selected to add a hole to the inner plane.



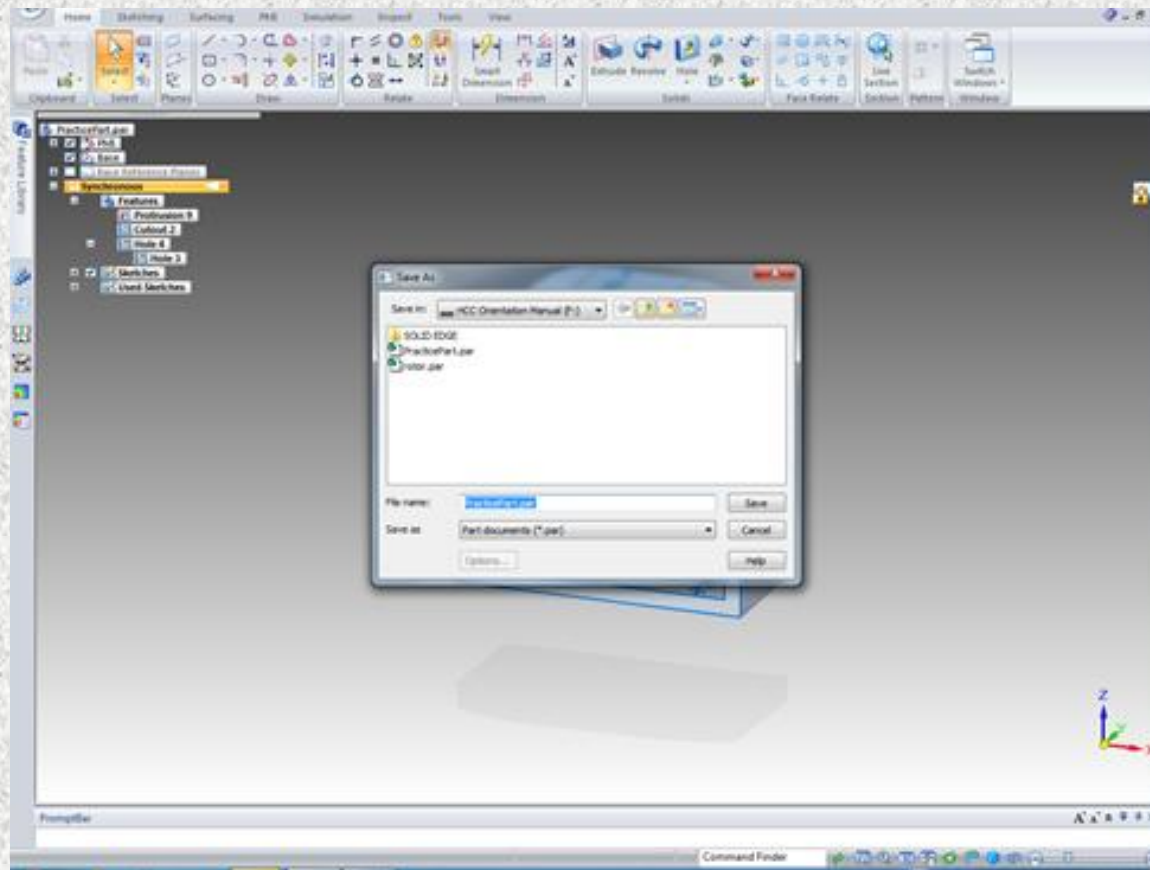
Placing the hole

Once the hole is in the desired location single click to place it.



Saving your part

Go to the application menu and click the save as tab



Adding your file name to your part

You can now name your file.