

F 54
.C398





NEW TRAIN SERVICE NEW YORK AND ST. ALBANS, VT.

Commencing June 22d, 1903.



SOLID TRAINS without change between Grand Central Station, New York, and Vermont, Green Mountains and Lake Champlain **SUMMER RESORTS,**

Via N. Y., N. H. & H. R. R., Boston & Maine and Central Vermont Ry., via Springfield and White River Junction, the **POPULAR GATEWAYS** to all Northern Summer Resorts.

SEE THAT YOUR TICKETS READ VIA WHITE RIVER JUNCTION.

PULLMAN'S most modern Parlor and Sleeping Cars will be run from New York to St. Albans, Vt., WITHOUT CHANGE, as follows:

	A	B	C
Lve New York, -	† 9.02 a.m. *	4.00 p.m.	† 9.00 p.m.
Stamford -	9.48	3.58	9.48
Bridgeport -	10.22	4.47	10.21
New Haven -	10.53	5.52	10.55
Meriden -	11.27	6.20	—
Hartford -	11.50	6.50	11.55
Springfield -	12.37 p.m.	8.15	12.45 a.m.
Lve W. R. Junct. -	4.27	12.40 a.m.	6.00
Arr Montpelier -	6.20	3.10	8.20
Waterbury (Mt. Mansfield) } -	6.25	3.21	8.35
Burlington -	7.30	4.40	9.57
St. Albans -	7.55	4.55	10.38

† Week days only.

* Daily.

SUBJECT TO CHANGE WITHOUT NOTICE.

Train "A" has through coaches and buffet parlor cars, New York to White River Junction, and parlor car New York to St. Albans without change.

Train "B" has parlor cars and first-class coaches to Springfield; sleeping car and through high-backed vestibule coaches from Springfield to White River Junction, St. Albans and Montreal, without change.

Train "C" has first-class coaches New York to White River Junction, and sleeping car New York to St. Albans, without change.

THIS NEW THROUGH CAR SERVICE has been arranged to accommodate the largely increasing summer travel to Vermont, Green Mountain and Lake Champlain Summer Resorts on the line of the CENTRAL VERMONT RAILWAY, such as Royalton Rochester, Randolph, Roxbury, Northfield, Montpelier, Barre, Waterbury, Stowe, Vt. Mount Mansfield, Camel's Hump, Burlington, Lamoille Valley points, Camp Watson (Milton Boro), St. Albans, Samson's Lake View House, the Great Back Bay Fishing Grounds of Lake Champlain, Hotel Champlain, Maquam, Highgate Springs (Missisquoi Bay), and Missisquoi Valley points.

LOW RATE EXCURSION TICKETS are sold and baggage checked from hotel or residence in New York through to destination, either via rail or Sound Line Steamers to Lake Champlain, Green Mountain and Canadian Summer Resorts.

Tickets are also on sale at office of the CENTRAL VERMONT RY., 385 Broadway, New York City, A. W. Ecclestone, Southern Passenger Agent; where sleeping and parlor car accommodations can be secured; also at Grand Central Station, New York, J. M. Lewis, Ticket Agent.

Passengers from Philadelphia, Baltimore, Washington, or other southern points should see that their tickets read via

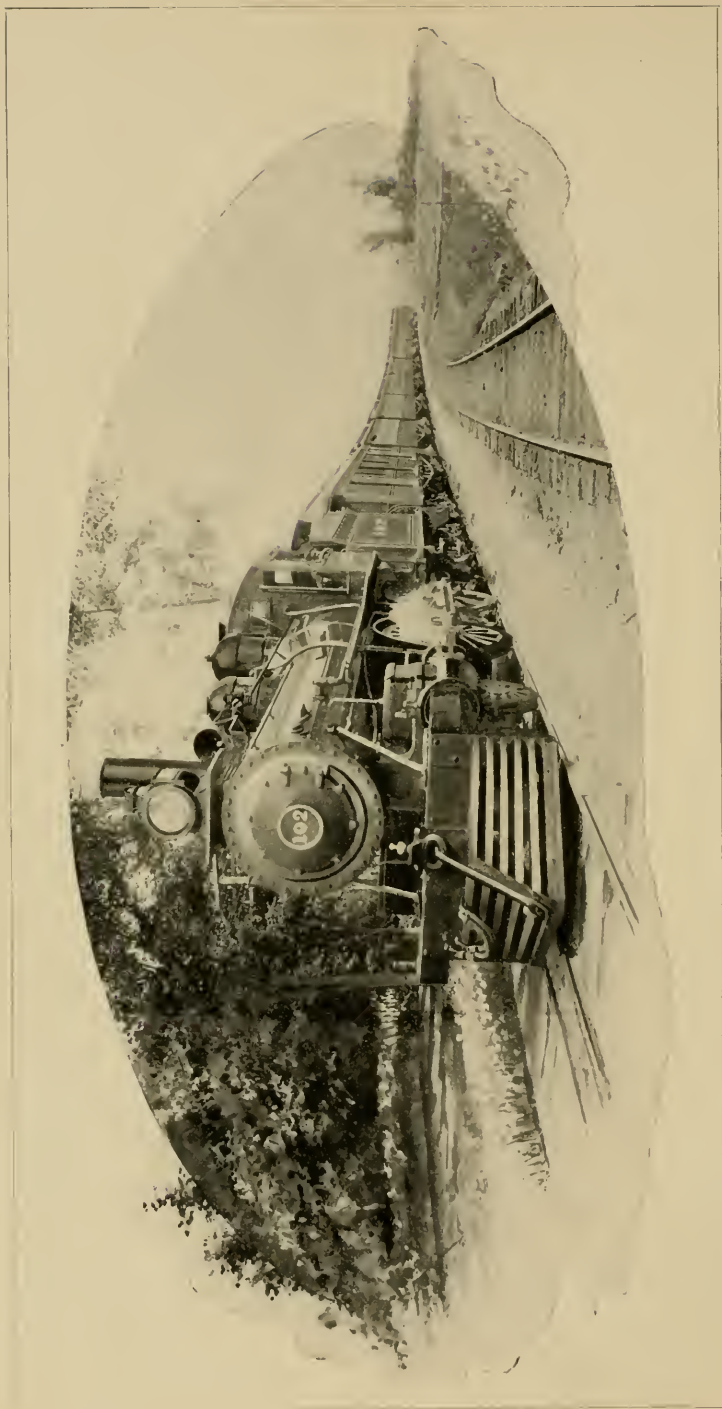
NEW YORK AND WHITE RIVER JUNCTION.

Ask for CONNECTICUT RIVER LINE time table folders, or CENTRAL VERMONT RY. time table folders, which will be issued June 22d, 1903, giving more detailed information as to above NEW SERVICE. They may be had by applying to Central Vermont Ry. office, 385 Broadway, New York, and at Grand Central Station, and all Tourist Offices, in New York City and Brooklyn.

THE
TRAVELLERS' INFORMATION CO.

OF ALBANY.

100 NASSAU ST. N. Y.



BOSTON AND NEW YORK EXPRESS PASSING HIGHGATE SPRINGS, VT.

Summer Homes

Among the Green Hills
of Vermont, Islands and
Shores of Lake Cham-
plain, Adirondacks and
Canada, reached by the
Popular ❁ ❁ ❁ ❁ ❁

Green Mountain Route.



1903.

Published by
PASSENGER DEPARTMENT,
CENTRAL VERMONT RAILWAY.

h

J. W. HANLEY, COMPILER.

F52
C398

CONTENTS.

Descriptive of Vermont,	7-67
Descriptive of Canadian Resorts,	68-71
Descriptive of Adirondacks,	72-77
Descriptive of Lake Champlain Islands and adjacent Shores,	79-85
List of Family Homes desiring City Boarders,	87-96
List of Principal Hotels in Vermont,	97-103
Excursion Rates to Vermont Points,	107-110
Excursion Rates to Lake Champlain, Adirondack and Canadian Resorts,	105-106

ADVERTISEMENTS.

Hotel and Summer Resorts (Vermont).

Addison House, Middlebury, Vt.,	117
American House, St. Albans, Vt.,	120
Bascom House, Bethel, Vt.,	118
Franklin House, Highgate Springs, Vt.,	113
Green Mountain Inn, Stowe, Vt.,	115
Hartford Inn, Hartford, Vt.,	117
Hotel Champlain, Maquam Bay, Vt.,	119
Junction House, White River Junction, Vt.,	121
Lake House, Larrabee's Point, Vt.,	113
Maple Grove Farm For Sale,	117
Pavilion, Montpelier, Vt.,	120
Pleasant View House, Moscow, Vt.,	119
Samson's Lake View House, St. Albans, Vt.,	120
Stevens House, Vergennes, Vt.,	117
Summit House, Stowe, Vt.,	115
The Maplewood, Randolph Center, Vt.,	114
The Woodstock Inn, Woodstock, Vt.,	121
Van Ness House, Burlington, Vt.,	118

Hotel and Summer Resorts (Adirondacks, N. Y.)

Au Sable Chasm Hotel, Au Sable Chasm, N. Y.,	116
Paul Smith's Hotel, Paul Smith's, N. Y.,	124
Riverside Inn, Saranac Lake, N. Y.,	124
Saranac Inn Hotel, Saranac Inn, N. Y.,	127
The Algonquin, Algonquin, N. Y.,	124

MISCELLANEOUS.

Champlain Transportation Company,	123
Delaware & Hudson,	122
Depot Cafe, White River Junction, Vt.,	121
Depot Cafe and Dining Room, St. Albans, Vt.,	118
Hudson River Day Line,	125
Intercolonial Railway,	126
Mount Mansfield Electric Railroad,	115
National Life Insurance Company, Montpelier, Vt.,	112
Park Avenue Hotel, New York City, N. Y.,	126
The Safety Car Heating and Lighting Co., New York City,	116
Woodstock Railway,	121

103010
-06

WHITE RIVER JUNCTION

The Popular Gateway to Vermont, Lake Champlain, Adirondacks, Canada and the West.

THROUGH Coaches and Pullman's most modern Parlor and Sleeping Cars between Boston, Springfield and New London to Montreal and Chicago without change via the Central Vermont Railway, Green Mountain Route and Grand Trunk Railway System also Parlor and Sleeping Cars New York to St. Albans, Vt., via White River Junction on 9.02 a. m. and 9.00 p. m. trains.

Excursion Tickets to all Points on sale June 1st to September 30th, good to return until November 1st.

Stop-over Privileges Allowed for 30 days on all Summer Excursion Tickets.

Time Table Folders and full information in regard to tickets, routes, rates and through train service can be had on application to any regular ticket agent or at the following offices:

Boston, Mass., T. H. Hanley, New England Passenger Agent, 360 Washington Street.
Boston, Mass., N. B. Dana, City Ticket Agent, Boston & Maine R. R., 322 Washington Street.

Boston, Mass., J. M. French, Ticket Agent, North Union Station.

Boston, Mass., Raymond & Whitcomb, 305 Washington Street.

Chicago, Ill., J. H. Burgis, City Passenger and Ticket Agent, 249 Clark Street.

Chicago, Ill., J. A. Robbins, Ticket Agent, Dearborn Station.

Concord, N. H., E. L. Goodwin, Ticket Agent.

Fall River, Mass., M. A. Martin, Ticket Agent.

Fitchburg, Mass., J. A. Tufts, Ticket Agent

Hartford, Conn., J. S. Quinn, Ticket Agent.

Holyoke, Mass., W. W. Ward, Ticket Agent.

Lawrence, Mass., G. H. Miller, Ticket Agent.

Lowell, Mass., C. K. Miller, Ticket Agent.

Manchester, N. H., C. S. Stevens, Ticket Agent.

Montreal, P. Q., A. C. Stonegrave, Canadian Passenger Agent, 134 St. James Street

Montreal, P. Q., W. H. Clancy, Canadian Passenger and Ticket Agent, Grand Trunk Railway, 137 St. James Street.

Nashua Junction, N. H., H. L. Sanderson, Ticket Agent.

New Haven, Conn., C. G. Phillips, Ticket Agent.

New London, Conn., F. H. Parmalee, City Passenger Agent.

New York, N. Y., A. W. Ecclestone, Southern Passenger Agent, 385 Broadway.

New York, N. Y., J. M. Lewis, Ticket Agent, New York, New Haven & Hartford, Grand Central Station.

New York, N. Y., W. B. Southwick, Ticket Agent, Norwich Line, Pier 40 North River, foot of Clarkson Street.

New York, N. Y., Thomas Cook & Son 261 Broadway.

New York, N. Y., R. H. Crunden & Co., 113 Broadway.

Northampton, Mass., A. T. Sawin, Ticket Agent.

Pawtucket, R. I., F. A. Hayward, Ticket Agent.

Providence, R. I., J. P. Thorndike, Ticket Agent.

Springfield, Mass., F. A. Brown, Ticket Agent.

Woonsocket, R. I., E. W. Miller, Ticket Agent.

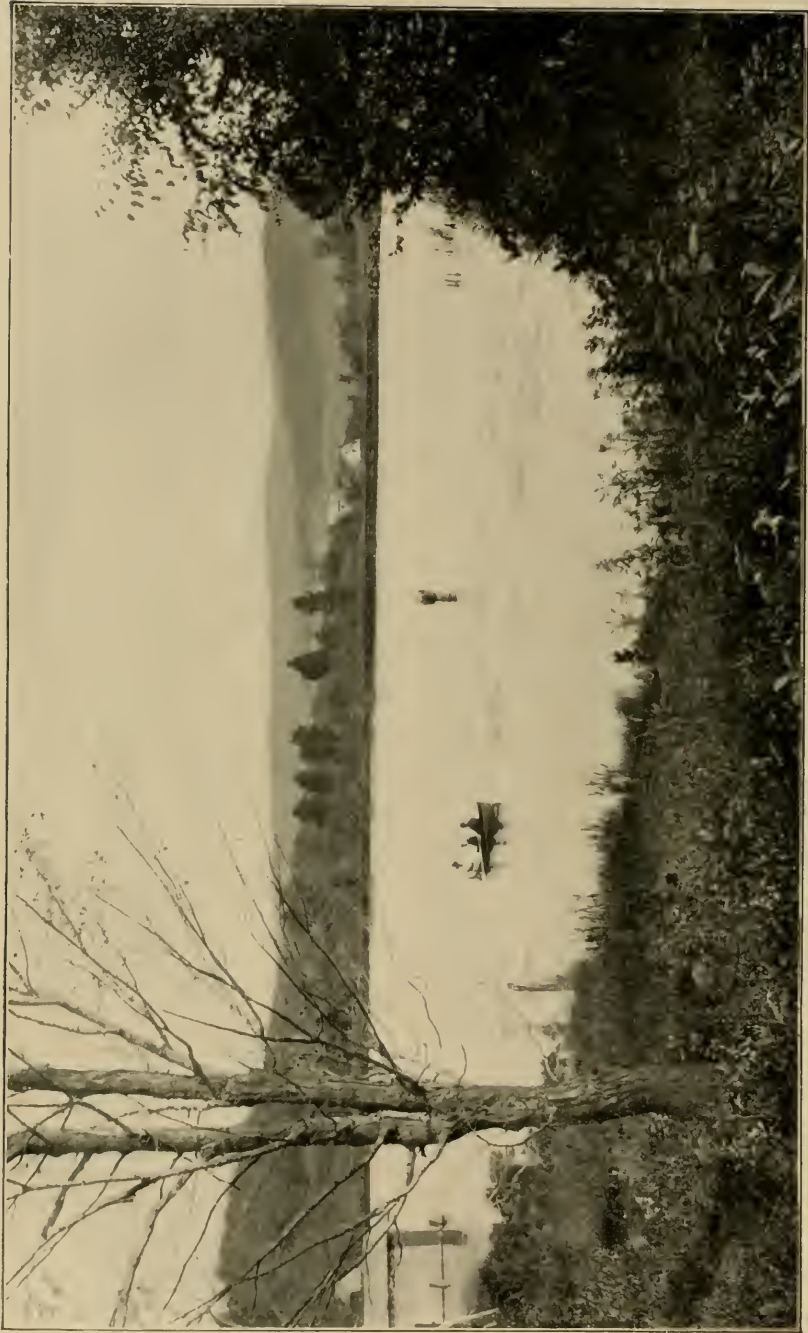
Worcester, Mass., W. U. Bixby, Ticket Agent.

Worcester, Mass., George Legassy, Ticket Agent, Lincoln Square.

Also at the principal ticket offices of the Boston & Maine, New York, New Haven & Hartford, New York Central & Hudson River, Pennsylvania, Grand Trunk Railway System, Baltimore & Ohio, Philadelphia & Reading, and at the office of any Southern or Western Line.

E. H. FITZHUGH,
Vice-President and Gen'l Manager.

J. E. BENTLEY,
Gen'l Passenger Agent.



SILVER LAKE, BARNARD, VT. RAILROAD STATION, BETHEL, VT.

SUMMER HOMES

Among the Green Hills of Vermont, Islands and Shores of Lake Champlain, Adirondacks and Canada, Rest and Recreation. Healthful Climate. Charming Scenery.



THE CENTRAL VERMONT RAILWAY COMPANY publishes this little pamphlet each season in order to give information to Summer Excursionists and others, who desire up-to-date information in regard to the many families who

entertain city people at their hospitable homes during the summer months; also to give full information concerning summer hotels among the Green Hills and on the shores and islands of Lake Champlain and the numerous other charming lakes in Vermont, located on and adjacent to the Central Vermont Railway. Vermont and Lake Champlain are unsurpassed by any locality in the Union for scenic beauty and healthfulness.

Family Homes in the Country for Entertainment of Summer Boarders.

The selected list, given elsewhere, of names of families who advertise for city boarders is comprised almost entirely of those who have taken city people for the past twelve years; their summer boarders returning year after year, causing an enlargement of house capacity and the building of new cottages.

A large number of illustrations of the homes for city guests are shown throughout the book. The owners are all well-to-do people, own their own farms and take city boarders more for the

Don't Fail to Read the Selected list of first-class Family Homes and Hotels for Summer Boarders following Descriptive.



OLD OAKEN BUCKET.

enjoyment of it than for the revenue they receive out of it.

The homes of these Vermont people are the homes of a forceful, wide awake and educated population, that read the daily New York and Boston papers, take the magazines, and buy the best books of the day. For those desiring a quiet country vacation, the selection offered them in this book can not be excelled. These homes are delightful places for children, where they can play, see the poultry,

cattle, and ride the old horse if desired. All the places advertised have plenty of milk, cream, butter and eggs. The country is richly productive and the summer fare of fruit, vegetables, eggs and poultry is perfect.

With the comfort and attractions offered at prices from \$5.00 per week and upwards, no other State equals Vermont. At many places free use of the horses and carriages, also boats is allowed. A vacation spent at one of these comfortable Vermont Homes, located on a mountain side, or in a beautiful valley among the Green Hills, or on the shores of one of her many charming rivers or lakes will be a fulfillment of your every desire as to an ideal summer outing in the country.



Don't Fail to Read the Selected list of first-class Family Homes and Hotels for Summer Boarders following Descriptive.

Six Distinctive Localities in Vermont Beautiful Beyond Description :

THE WHITE RIVER VALLEY : which opens up at White River Junction and continues northward for fifty miles to Roxbury, the summit of the Green Mountains, 1,240 feet above sea level.

THE DOG RIVER VALLEY: twenty miles from Roxbury to Montpelier.

THE WINOOSKI VALLEY: forty miles to Burlington following the Winooski river all the way; Mt. Mansfield and Camels Hump being in full view the entire distance.



HORSELESS.

THE CHAMPLAIN VALLEY: twenty-five miles northward to Highgate Springs.

THE MISSISQUOI VALLEY: twenty-eight miles from St. Albans to Richford. The Missisquoi river is crossed several times in making the trip

THE WEST RIVER VALLEY: thirty-six miles from Brattleboro to South Londonderry, said to be the Switzerland of America

An extensive description of all the points of interest in each of the charming localities referred to above is given elsewhere in this book.

Don't Fail to Read the Selected list of first-class Family Homes and Hotels for Summer Boarders following Descriptive.



HOTEL, CHAMPLAIN AND SURROUNDINGS, MAQUAM, VT.

In considering the claims of any particular locality as a place to spend your vacation, matters of most importance are healthfulness, natural attractions, quality of entertainment afforded and expense. Vermont, Lake Champlain and the Adirondacks offer you more natural attractions than any other section in the east. This is the enthusiastic verdict of thousands from all parts of the country, who, in increasing numbers each year, testify to the hospitality and attractions of this region.



Vermont's Green Hills.

With their swelling breasts of verdure, rivers and lakes abounding with charming views, excellent fishing and hunting, once visited establishes the fact that Vermont is the ideal Paradise of Summer Resorts.

Hotels.

There are many first-class hotels with all the modern conveniences; supplying all the delicacies of the season, and many

Don't Fail to Read the Selected list of first-class Family Homes and Hotels for Summer Boarders following Descriptive.

of them with vegetables and fruit from their own gardens and orchards.

The hotels spare no effort to make the sojourn of the summer visitor a comfort and pleasure; furnishing entertainments and amusements, tennis courts, golf grounds, base ball, hammocks, swings, etc., also orchestras and local theatricals, boating, fishing, etc.



A PICNIC PARTY, STOCKBRIDGE, VT.

Low Rates to Vermont and Lake Champlain.

One way and round trip tickets are sold to all points at the lowest rates. From New England points passengers can use mileage tickets, if preferred, as the Boston and Maine, New York, New Haven and Hartford and the Central Vermont Railroads sell, 1,000 mile mileage books at two cents per mile good for the bearer; these books are not interchangeable and passengers would require a book for each road.

First Class Trains.

Three first-class trains daily, except Sunday: Boston, Springfield and New York to Vermont points equipped with high backed vestibuled coaches and Pullman's most modern

Don't Fail to Read the Selected list of first-class Family Homes and Hotels for Summer Boarders following Descriptive.

parlor and sleeping cars, via White River Junction, the popular gateway to Vermont, Lake Champlain, Adirondacks and Canada. From Chicago and the West, see that your tickets read via Grand Trunk Railway and Montreal. Through first-class coaches from Chicago, Detroit and Buffalo to Montreal, and through first-class sleepers to Vermont points and Boston from Chicago via Grand Trunk Railway and Montreal. Central Vermont and Grand Trunk Railway trains occupy the new and elegant Union Bonaventure Station in Montreal, insuring close connections with all trains. Rates via this line as low as any other line.

When Planning Your Vacation the Coming Season

Kindly look over this book which is filled with interesting vacation pointers, suggestions and information for those who wish for a time during the warm summer months, to enjoy the delights of an ideal vacation among the green hills with the air crisp and pure, and nights always cool.



MISSISQUOI RIVER, NEAR SWANTON, VT.

Don't Fail to Read the Selected list of first-class Family Homes and Hotels for Summer Boarders following Descriptive.

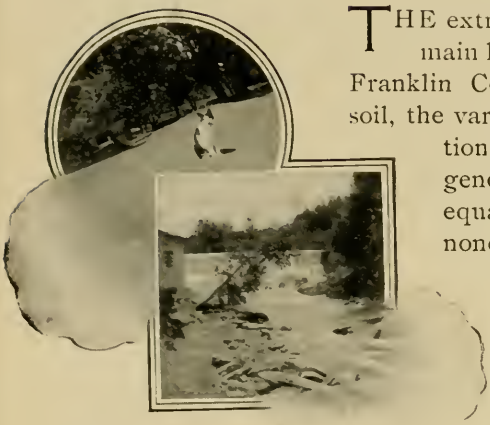


SMUGGLER'S
NOTCH
MT. MANSFIELD, Vt.



PROFILE CANYON
MOSS GLEN FALLS
STOWE, VT.

THE MISSISQUOI VALLEY.



THE extreme northwest portion of the main land of Vermont is occupied by Franklin County. In the fertility of its soil, the variety and quality of its productions, and the thrift and intelligence of its inhabitants, it is equaled by few, and surpassed by none of the other counties. Its surface is varied enough to form a most pleasing landscape, yet contains little waste land. The eastern part of the territory is broken and rocky, extending up on the western range of the Green

Mountains, while the western part is comparatively level, and contains some of the finest farming lands to be found in New England. The county is especially noted for its fine cattle, horses and sheep, and for its large production of butter and cheese. Probably, in the last respect, no portion of the United States has a more enviable and more firmly established reputation than this county. In all the leading markets, Franklin County butter stands easily in the lead, the *sans pareil*, a little more "gilt edge" than any of its competitors.

Numerous streams are distributed over the surface of this county, while the Missisquoi and Lamoille rivers form the principal water courses of the territory. There are several inland lakes, or ponds, of which Franklin pond, in Franklin, is the largest. These bodies of water with Lake Champlain on the west, give a pleasing variety to the scenery, and afford most inviting and ample opportunity for fishing. In all directions, as one travels through this county, there can be seen, pleasantly situated, commodious and attractive farm houses, with their

Don't Fail to Read the Selected list of first-class Family Homes and Hotels for Summer Boarders following Descriptive.

neat out-buildings, in the midst of green meadows, and well-tilled fields. A stay in one of these homes is a pleasure, indeed, and when once experienced leaves a longing for a repetition. Indeed, the whole county possessing wonderfully pleasing scenery in itself, surrounded by the most charming beauties of nature, and containing superior advantages and facilities for water and railway transportation, is, all in all, a most desirable home for every true seeker of genuine rest and recreation.



ONE OF THE TURNOUTS, VERMONT FARMER.

The Missisquoi Valley possesses many attractions for the sportsman. The country lying along the banks of the Missisquoi river (an Indian name signifying an abundance of water fowl) is charmingly pastoral. As intimated by the name, hunting and fishing are excellent. The invalid, as well as the pleasure seeker, appreciates this region, containing many mineral springs of tested medicinal value.

RICHFORD,
VERMONT. This pretty and thriving little village with the Missisquoi river in its midst, is situated on the lines of the Central and Canadian Pacific, within eight hours' ride of Boston and three of Montreal, with four or five trains daily to either point.



VERMONT PREMIUM STEERS.

This prosperous town stretches along the Canadian line, and has within its borders excellent carriage drives and favorable points for hunting and fishing

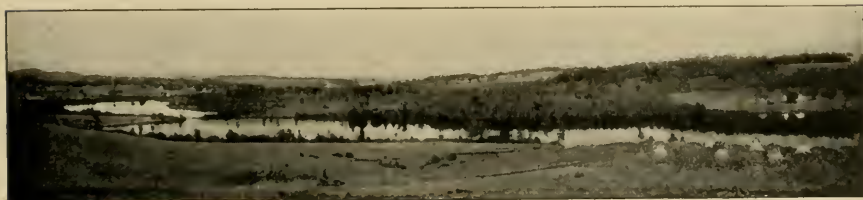
Don't Fail to Read the Selected list of first-class Family Homes and Hotels for Summer Boarders following Descriptive.

Among the numerous industries of the village are the largest furniture manufactories in the State, and an extensive veneer butter pail manufactory. Its picturesque scenery of surrounding hills and mountains, together with all the facilities of concrete walks, water works and electric lights, should now bring it to the front for travellers and seekers of summer sport, as well as for those who require and enjoy the pleasure of quiet and rest. After leaving Richford, one passes first through



MISSISQUOI RIVER, NEAR RICHFORD, VT.

BERKSHIRE, VERMONT a town noted for the thrift of its people and the products of its fine grazing farms. The surface of the township is broken into gentle swells and hills rising from the beds of numerous streams, though never so abruptly as to hinder the cultivation of the soil. The rich alluvial tracts along the rivers and streams are especially productive, and in these waters there is abundant attraction for the votary of the rod and line.



BERLIN POND, MONTPELIER, VT.

From East Berkshire, the railroad station, there are stage connections with Montgomery, a town similar in many respects to Berkshire, and fully as attractive. Proceeding on our way by rail, we come next to Enosburgh, of which

ENOSBURGH Is the chief center. This is an active, wide-
FALLS, VT., awake village and station on the Missisquoi Valley Branch, beautifully situated in the midst of a prosperous agricultural community on the Missisquoi River. The picturesque falls at this point, from which the village receives its name, afford the finest water power in the



STERLING POND.

country. In surface, the town is considerably diversified, by mountain, hill and dell, having a very picturesque contour, the eastern portion of the town lying entirely upon a spur of the Green Mountains. Portions of the town contain large tracts of maple forest from which many thousand pounds of sugar are manufactured each year. From this station there are easy stage connections with the various villages about. The next station reached is that of South Franklin the railroad station for the town of

Don't Fail to Read the Selected list of first-class Family Homes and Hotels for Summer Boarders following Descriptive.

**FRANKLIN,
VERMONT.**

This town borders on the Province of Quebec, and is one of the most productive in the county. The surface is uneven, though not abrupt, the soil is mostly gravelly loam, generally good, and finely adapted to grazing, so that many of the inhabitants are engaged in dairying and raising grade cattle. Franklin pond, a small lake lying near the center of the town, is a lovely sheet of water, having a width of about one mile and is three miles long. In this pond, and the brooks about there is excellent fishing.



CAMPING PARTY, LAKE CHAMPLAIN,
ST. ALBANS BAY.

Passing through North Sheldon the next stop is at.

which was first settled by the Quakers. The ostensible attraction at this point is the medical springs, especially curative for cutaneous diseases and malaria.

**SHELDON
SPRINGS,
VERMONT.**

But does not Dunton Hill, with its extensive view of Montreal and the mountains beyond, the Adirondacks and the Green Mountains, the boating, the driving, and all that, help to make Sheldon Springs a most attractive resort?

After leaving this resort, we pass through a rich interval of farming country, and arrive at

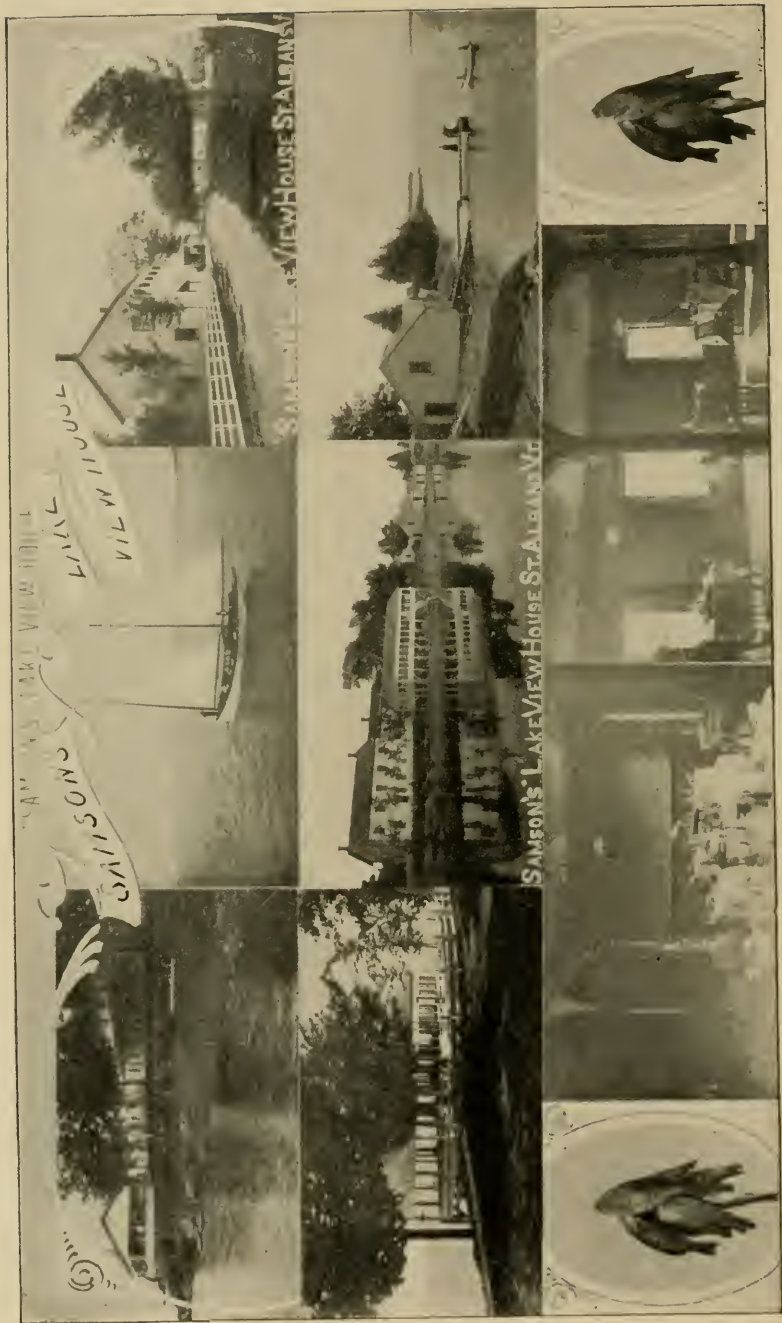
a progressive and rapidly growing city of about **ST. ALBANS,** 9,000 inhabitants, the magnificent location of **VERMONT,** which, nearly four hundred feet above Lake Champlain, insures a cool and healthful climate

and pure air. It ranks high in commercial importance, being the business center of one of the most fertile and prosperous farming sections of the country; the seat of important and grow-



VERMONT MILITIA IN CAMP AT FORT ETHAN ALLEN, VT.

Don't Fail to Read the Selected list of first-class Family Homes and Hotels for Summer Boarders following Descriptive.



SAMSON'S GREAT BACK BAY.

ing manufacturing interests; the largest port of entry in the State. The CENTRAL VERMONT RAILWAY general offices are located here. The city is well in advance in all the improvements of the day, has well lighted and well kept streets lined with rows of beautiful elms and maples, ample and fully equipped stores in all the lines of trade, most favorable



33 BASS WEIGHING 64 POUNDS, CAUGHT IN HALF DAY OF ROCKY POINT, ST. ALBANS BAY.

railroad and telegraphic communication with the great centers of business. The sojourner in St. Albans will find himself within immediate reach of the conveniences of travel and communication; possessed of all the religious and many social privileges of the city, amid people of high intelligence and extremely hospitable, and withal, in a town whose supreme charms that nature gives, "the beauty which art cannot adorn".

Don't Fail to Read the Selected list of first-class Family Homes and Hotels for Summer Boarders following Descriptive.

Of St. Albans, Henry Ward Beecher, in his "Norwood" wrote thus: "The picturesque scenery of New England reaches a climax at St. Albans, a place in the midst of greater variety of scenic beauty than any other that I can remember in America."

In the center of the city is Taylor Park—nearly seven acres in extent—surrounded by churches, banks, business blocks and residences, and containing the beautiful seven thousand dollar



FIRE STATION AND POST-OFFICE, ST. ALBANS, VT.

fountain, the gift of the late Ex-Gov. J. Gregory Smith. This fountain is one of the finest in New England, within this park of most marked natural attractions and tasteful adornment, help make up a scene of surpassing beauty.

Along the eastern border of the town extends a range of hills, the southern terminus and highest point being appropriately named Belleview, from whose summit, which is easily accessible, can be obtained a view rarely surpassed in grandeur and

Don't Fail to Read the Selected list of first-class Family Homes and Hotels for Summer Boarders following Descriptive.

beauty. Among the chief attractions of St. Albans are the Electric car rides to Swanton, and St. Albans Bay on Lake Champlain, also charming drives through the rich surround-



ST. ALBANS BAY, VT., (LAKE CHAMPLAIN.)

ing country in all directions. One of the most delightful of these is to St. Albans Bay; the broad highway lying in the midst of one of the most fertile regions in the State, generally sloping down to the silver lake dotted with white winged boats and emerald isles. Here abundant facilities for fishing may be found, and piscatorial sport at this point, especially angling for bass and pike, is a matter of fame among those who love the rod and reel, the locality being known to them as the Great Back Bay.

The distance to St. Albans Bay, an arm of the lake, is about two and one-half miles from St. Albans. The new Electric Street Railway extends to this point, where delightful trips may be taken among the beautiful north islands by excursion steamers. Those enjoying fishing for the gamey black bass and and other Lake Champlain fish can enjoy themselves in the



Great Back Bay Fishing Grounds, which are adjacent to St. Albans Bay. The scenery about St. Albans Bay is charming, especially the drives along the shore to Rocky Point and Samson's Lake View House, also south on the

RESIDENCE OF MRS. W. W. MERRICK, OAKLAND, VT.

Don't Fail to Read the Selected list of first-class Family Homes and Hotels for Summer Boarders following Descriptive.



PARK AT POINT
ROCKY POINT,
LOOKING SOUTH.

LAKE CHAMPLAIN
& ROCKY POINT

ROCKY POINT
LOOKING WEST.

ST. ALBANS BAY VT.

VIEWS AT ROCKY POINT,

Georgia shore, passing Patterson's, the Cedars, and many beautiful cottages and camps located along the shore. There are a number of steam yachts on the lake, including the "J. C. L." and the "Liberty," which may be chartered for trips about the lake. As we leave St. Albans for the South the railroad, in passing the town of

at first hugs
GEORGIA, the hills close
VERMONT, on the east
 and passes
 over considerable of an
 eminence. From the sum-
 mit of this can be seen, to
 the west, one of the most
 enchanting views in all
 New England, reaching
 out as it does, over a long
 stretch of fertile and well
 tilled farms, sloping down
 toward the beautiful ex-
 pansion of Lake Champlain,
 thickly studded with islands,
 and beyond it the majestic
 sweep of the Adirondacks.
 After a ride of a few min-
 utes, we reach Georgia
 Station, from which there
 are stage connections with



FAIRFAX FALLS.

Fairfax, a well-to-do town with a variety of beautiful scenery, numberless hills and streams, along which are many retreats alluring to the fisherman and pleasure seeker. Just after leaving Georgia Station, southward bound, we cross the Lamoille on a bridge which spans the river at a giddy height. Looking from this bridge, to the east, the traveller sees a beautiful country, watered by the Lamoille, and to the west, some attractive intervale farms which are rarely equaled in beauty and fertility. A few minutes later the car door opens and it is announced that we have reached



CAMP MARTIN, MILTONBORO, VT.

**MILTON,
VERMONT,**

a prosperous village situated on the Lamoille River. The great falls of the Lamoille are within an easy walk from the railway, and are worthy of a visit. In running fifty rods, the river falls about

one hundred and fifty feet. "Near the middle of the cataract is a small island upon each side of which the water rushes down with the greatest violence, rebounding from rock to rock, tossing its spray into the air, and stunning the astonished spectator

by its successive concussions and incessant noise." Here are located the fine new mills, owned by the International Paper Co., of New York, for the manufacture of wood pulp. The immense steel penstock, eleven feet in diameter, the long cable elevator, and the four large turbine water wheels, are objects of interest to

the visitor. Two hills in the opposite parts of the town, rising abruptly from a comparatively level country, are about nine hundred

feet high, and give a marked and pleasing feature to the landscape. The surface of the town is diversified, affording many fine views of Lake Champlain and the Adirondacks, and is under a high state of cultivation, and its many excellent dairy farms are very productive. A drive of about nine miles westward from the railroad station over a fine road and through most charming scenery brings one to Camp Watson, upon the shore of Lake Champlain.

Taking the cars again at Milton station, we pass through Colchester, Vt., the station for Mallet's Bay, three miles from



**COLCHESTER,
VERMONT.**

Colchester station, reached by private conveyance. Mallett's Bay is five miles long by two and three-fourths miles wide. It affords fine fishing; has excellent beaches for bathing, and is dotted with small islands. The Green Mountains on the east and the Adirondacks on the west are in full view.

**ESSEX
JUNCTION,
VERMONT.**

a place which one can reach or leave by rail at almost any time of day. It is finely located and a steadily growing village, the increase in population of which is due in a large measure to its advantage as a place of residence. It has within its limits beautiful scenery, and commands one of the finest views of the Green Mountains and Adirondacks. Here we make a detour from the main line over twenty-six miles of the Lamoille Valley.



RESIDENCE OF L. E. HOPKINS, ESSEX JUNCTION, VT.

LAMOILLE VALLEY.



GOING into the heart of this hill country through Essex Center, Jericho, Underhill, North Underhill, Cambridge, Jeffersonville, to Cambridge Junction.

Most of the track lies along the banks of either Brown's or Lamoille river, and we catch glimpses of trout in the numerous streams on the way. This is a good farming and lumbering district. It goes without saying that the

disciple of Isaac Walton finds good missionary ground where every field has its hill and every hill dozens of trout brooks.

The Lamoille valley has here rather an unique situation, shut off on the east by the western spur of the Green Mountains, Mounts Mansfield and Sterling guarding the base like austere sentinels, while to the west is over the broad Champlain valley, views of which are obtained from the hill tops. "That comfortable Homes" is the thought ever with us as we wind around the base of the beautiful hills, which are cultivated to their very tops. The ever changing views of "Old Mansfield," which the traveler on this line gets, is one of the most charming panoramas in all New England travel.

is a typical Vermont village possessed of an unusually large number of neat and attractive homes.

JERICHO,
VERMONT. The surface of the township is quite uneven and the great variety of hill, valley, meadow, pasture, woodland, brook and river lend great beauty and interest to the

Don't Fail to Read the Selected list of first-class Family Homes and Hotels for Summer Boarders following Descriptive.



VIEWS ABOUT CAMBRIDGE, VT.

scenery. Mount Mansfield, only eight miles away, with its changing aspect of light and shade, stands guardian on the east, while a fine view of the Adirondacks presents itself on the west. Many pleasant drives and bicycle paths radiate in all directions from the village, and sojourners in the town remark that it is one of the prettiest places in the State.



LAMOILLE RIVER, CAMBRIDGE, VT.

UNDERHILL VERMONT. at the foot of Mt. Mansfield, is well known as a most attractive resort, and has been the summer home of many wealthy and distinguished people.

At this point tourists to the summit of the mountain leave the railroad, and are taken in carriages to the half-way house, from which point they ascend to the summit either on foot or on horse back, by a circuitous but well beaten path. At North Underhill the highest point on the road is reached, whence we descend to

CAMBRIDGE, VERMONT. than which fewer towns offer greater attractions to the lover of natural scenery. A rich interval intersects the town for a distance of ten miles with the beautiful Lamoille River winding through it. The roads on either side of it are fine, having in places rocky cliffs overhanging them, and at every point there is a grand and delightful view of Mt. Mansfield, and here and

Don't Fail to Read the Selected list of first-class Family Homes and Hotels for Summer Boarders following Descriptive.

there of Camel's Hump. The farms along the road are pleasant and under a rich state of cultivation, having good houses and attractive out-buildings. There are two villages in the town, Cambridge and Jeffersonville, and each has a commodious hotel where guests are entertained at moderate prices. Many homes of citizens welcome visitors at a modest remuneration. From Jeffersonville to Stowe, through the famous "Smugglers Notch" a carriage road has lately been completed, which promises to be one of the most noted drives in all New England.



OUT FOR GAME, CAMBRIDGE, VT.

Returning to Essex Junction, we see on the right Fort Ethan Allen, the recently established U. S. Military Post. Soon after passing this we ride over the twin bridges across Winooski gorge, a most wildly picturesque spot. The river is about seventeen rods wide, the sheer walls rising one hundred feet on either bank, and worn into weird forms by water and ice. Winooski Falls are much visited by tourists, though somewhat disfigured by "improvements" in the interests of the extensive manufacturies located there on account of the tremendous water power. After crossing the river and emerging from the tunnel, we come to

the beautiful Queen City
BURLINGTON, of Vermont. To say that
VERMONT. for beauty and scenery

Burlington ranks among the first of New England towns would be saying no more than is universally conceded. Its unique beauty consists in the grouping of the elements of



MOUNT MANSFIELD.

beauty, which make an almost ideal scenery for a small rural city:—its crescent bay, with headlands at either horn, opening into a water-view ten miles across and fifty miles from right to left; its gentle slope from the harbor's edge to the college crowned summit a mile away; its boundary of mountains on both sides, with their bold peaks, purple, misty or snow covered, according to the ever varying meteoric conditions, and with the help of perspective and atmospheric illusion, constituting a circular framework to the pictures; in this nest of loveliness, a



LAMOILLE RIVER, JEFFERSONVILLE, VERMONT.

large village or a small city with wide, well-kept, well shaded streets, residences unpretending but tasteful, and surrounded with spacious and neatly cared-for grounds; a city of homes, churches, benevolent and educational institutions; the abode of a people cultivated, hospitable, not destitute of civic pride and not unaware of their advantages, but ready to concede the second place among Vermont villages to any of its neighbors who may claim it:—Such is Burlington. Come and see for yourself.

In the country surrounding the city there are many romantic drives and walks, among which are those along the Winooski river, to Mallett's Bay, to Shelburne Point and Harbor, and to Red Rocks.

Don't Fail to Read the Selected list of first-class Family Homes and Hotels for Summer Boarders following Descriptive.



VIEWS ABOUT STOWE, VT.

THE WINOOSKI VALLEY.

A rich
WILLISTON, farming
VERMONT. town.

Before we reach the station, we cross the Winooski, and from the bridge obtain a full view of Mount Mansfield and Camel's Hump. These two mountains are in sight, at intervals, for

many miles on this portion of the railroad, and the human profile of the former can be seen to the best advantage. There is a good summer hotel located here, situated about two miles from the railroad station on a high hill, giving a fine view of Lake Champlain, Bluff Point Hotel, and many other points of interest. This hotel will accommodate about thirty people. Approaching

the railway runs through broad and level fields of **RICHMOND,** rich alluvial deposit, which rise some distance **VERMONT.** away in verdant uplands, from which charming views of mountain and lake can be obtained, and where "the cattle upon the thousand hills" seen in the distance show that we are in a country rich in the productions of the dairy. Here is located the Vermont Condensed Milk Factory, of which the Borden's Condensed Milk Company of New York are the principal stockholders. Here is also located the plant of the Richmond Underwear Company, an enterprise already doing an extensive business and is adding much to the place. New streets have been laid out and new and tasteful dwellings erected. The village people take great pride in keeping the town "with an up-to-date" appearance and attractive to the eye



VERMONT BEAUTIES.

of the stranger. The town lies just where the Winooski Valley opens into that of Lake Champlain and combines in a most attractive manner the beauties of mountain and meadow. From the summit of Williams Hill, three miles distant, is seen one of the most attractive views of Vermont's entrancing scenery. The next stop is at

JONESVILLE,
VERMONT,

a station in the town of Richmond. Here one finds some of the most productive and well cultivated farms, thrifty and comfortable homes, surrounded by the most charming mountain scenery.



MOUNT MANSFIELD.

BOLTON,
VERMONT,

is a mountainous township with high hill, rocky ravines, mountains and gorges everywhere. Its scenery has been compared to that of the Yosemite. There is a good summer hotel here for summer boarders, located only ten rods from the railway station, at the foot of Camel's hump, and three miles from the summit



MAIN STREET, WATERBURY, VT.

Don't Fail to Read the Selected list of first-class Family Homes and Hotels for Summer Boarders following Descriptive.

of the Hump. Good fishing and hunting in this vicinity. Hotel accommodates twenty-five. Terms \$1.00 per day. Reduction from these terms if boarders remain for any length of time.

**NORTH
DUXBURY,
VERMONT.**

is located in a region thinly inhabited, but one that realizes the ideal of true lover of nature. Before reaching North Duxbury, a constant succession of river pictures may be seen on the south side of the track, while ranges of wild and picturesque rocks rear themselves on the northern side. The aspect of the coun-



CAMEL'S HUMP.

try impresses upon the traveler the fact that he is in a mountainous region. He is slow, however, to realize that he is going through a gap about 4,000 feet below the summit of Mansfield Mountain and of Camel's Hump, which are situated but a few miles distant on either side of him, and that he is less than 350 feet above tide water. It is at this point that the tourist leaves the railroad to climb to the summit of Camel's Hump, a trip that is deservedly becoming more and more popular.

Don't Fail to Read the Selected list of first-class Family Homes and Hotels for Summer Boarders following Descriptive.

is an incorporated village on the Central Vermont Railway twelve miles northwest of Montpelier. **WATERBURY, VERMONT.** The town lies in the notch between the Elmore and Mansfield spurs of the Green Mountains, and thus becomes especially fitted to claim the prize for beauty of scenery, where one delights in countless hills and vales and mountain peaks. The Winooski river flows through the deep valley in which the village lies, and there we have miles of riverside drives.



NEAR WATERBURY, VT.

Waterbury is the station for tourists bound for Mount Mansfield. The Mount Mansfield Electric Railroad runs several trains during the day between Waterbury and Stowe, ten miles distant, whence there is a good carriage road to the Summit House. Another route may be found by livery team from Waterbury; starting early, one can "do" the mountain and return to Waterbury in the evening. Camel's Hump is nearer—within easy reach—necessitating a drive of only sixteen miles and a tramp of five. Bolton Falls are four miles distant, where the Winooski cuts through the mountains, and on the Duxbury

Don't Fail to Read the Selected list of first-class Family Homes and Hotels for Summer Boarders following Descriptive.

side, to the man who "knows the way" is one of the most romantic spots in Vermont. Then, there is the drive to Lover's Lane, up Mad River and back, Stewart's Hill or Philip's district fairly intoxicating with beauty.

The hotels are but a step from the depot, commodious and well kept; the houses neat, with fenceless lawns; the streets are clean; shaded with maple and elms; the sidewalks are paved with concrete. With all modesty, it may be said that Waterbury is one of the most picturesque towns in the State of Vermont.



GREEN MOUNTAIN LODGE, WATERBURY, VT.

The following description of Stowe and a trip to Mount Mansfield from the eastern side, taken from an article in Harper's Magazine, is from the pen of a well-known writer.



STOWE, VERMONT.

Stowe is a typical Vermont town of two thousand inhabitants, lying in a beautiful valley, surrounded by wooded hills; the Hog-back mountains on the east, Mt. Sterling on the north, Mt. Mansfield

on the west. The distance from Stowe to the summit of Mt. Mansfield is about nine miles. For five miles, the route follows a well kept road through the valley of the West Branch, with

Don't Fail to Read the Selected list of first-class Family Homes and Hotels for Summer Boarders following Descriptive.

good farms and substantial buildings. Then it breaks off into the mountain, and winds about by easy grades to the summit. The ascent can be made in any vehicle with the greatest comfort. The way is thickly wooded with trees indigenous to Vermont. Shade is therefore abundant, and the sun's rays are little felt.

As you near the summit, you catch a glimpse of Lake Champlain and the Adirondacks to the southwest, with Smugler's Notch at the north which approaches the most beautiful



NEAR STOWE, VERMONT.

Alpine scenery. The nose towers up directly above, and the other features stretch away in the distance, massive, solemn and grand.

The highest point, the Chin, is 4,359 feet above sea level, and 3,670 feet above Stowe village, the loftiest peak of Vermont's Green Mountains. It gathers around its base all the eternal solitudes of nature. In the deep forests, no sound is to be heard save the whirl of the partridge, the tread of a bear, or the crash of a mountain deer as he leaps from crag to gorge. The grim solitude of the heights above seems to communicate itself to the heights below.

Don't Fail to Read the Selected list of first-class Family Homes and Hotels for Summer Boarders following Descriptive.

On the mountain crest, the same quiet prevails, broken now and then only by the scream of an eagle, or the growl of thunder.

The giant who is fabled to sleep beneath the superincumbent mass of Mansfield never wakes. He lends the outline of his features to the mountain; his voice never breaks its stillness.

Magnificent is the panorama spread out before us. To the east lie the White Mountains and numberless peaks and ranges



OFF FOR A LARK.

of lesser fame. To the north, can be discerned Mt. Royal and Montreal at its foot. To the west, the Adirondacks with Lake Champlain spreading her beautiful waters for more than one hundred miles of Western Vermont.

The greatest charm of this complete view thus spread beneath us is due, not as much to the mountain range and lake expanse, as to the element of civilization that pervades it all. Villages, farm houses, country towns and railroads are visible from every point. Even the top of some of the foot hills are

Don't Fail to Read the Selected list of first-class Family Homes and Hotels for Summer Boarders following Descriptive.



VIEWS ABOUT ROCHESTER, VT.

yielding toil to the industry of man. Everywhere can be seen evidences of his occupancy and handiwork. This constitutes the superiority of Mansfield as a coigne of vantage over every other mountain in America. A sunset from Dragon Summit in Arizona is immeasurable finer; the valley of the Rio Grande, as seen from the heights of Grand Canyon, is more imposing; the precipices and narrowing chasms of the Sierre Nevada are more rugged as seen from Tehachepi; Pike's peak commands a greater range of vision and Mount Washington rears its stately



LAKE MANSFIELD.

head nearer to heaven, but from none of these can be seen at one glance such a panorama of natural beauty, wedded to civilization, as from this modest mountain of Vermont.

The Summit House on the Mountain at the foot of the Nose has modern conveniences, clean beds, good menu, and attentive service.

Lake Mansfield, a beautiful sheet of water three-fourths of a mile long, covering about one hundred acres, lies four miles south of the Summit House, and seven miles southwest from Stowe village, and is reached in a fifty minute drive over a good road.

Don't Fail to Read the Selected list of first-class Family Homes and Hotels for Summer Boarders following Descriptive.

The scenery around Lake Mansfield is grand, sublime. The lake is owned by the Lake Mansfield Trout Club. Many representative men in Vermont and other states are members of this club. The lake is well stocked with speckled trout; and there is ample provision for the comfort of the club members and their friends.

Stowe village has a first class opera house, public library, memorial hall and public reading room supplied with daily papers and standard reading matter. This building, presented



THE PALISADES, MIDDLESEX.

to the town, was the generous bequest of Hon. H. C. Akeley of Minneapolis, Minn., and dedicated to the soldiers of the civil war.

The Mt. Mansfield Electric Railroad makes five trips daily between Stowe and Waterbury, connecting with all day passenger trains. No visit to Vermont is complete without this trip.

Six miles north of Montpelier is Middlesex, bounded on the south by the Winooski river, which by a long process of erosion has worn a deep and narrow gorge in the solid rock, doubtless once forming a barrier to the river. The village is situated near these "Narrows" of the Winooski river which madly rushes at this

Don't Fail to Read the Selected list of first-class Family Homes and Hotels for Summer Boarders following Descriptive.



MIDDLESEX NARROWS.

point, forming a scene of remarkable beauty and sublimity. The forest and streams abound in game and trout. A stage runs daily between Middlesex and Warren, stopping at Moretown and Waitsfield, villages situated in the most picturesque Mad River valley.

After leaving Middlesex, the next stop is at Montpelier Junction, thence we proceed by a branch road to

the capital of Ver-
MONTPELIER, mont. This city
VERMONT, for its size, the
 wealthiest in lo-
 cation and residential features,
 one of the most beautiful in the
 State, has, in recent years, begun
 to attract attention and patron-

age as a delightfully quiet and salubrious summer home. Perhaps no community of 7,000 inhabitants in New England more fully and perfectly blends the various comforts and pleasures of city and country life. In all that pertains to a city, good hotels, large business blocks, fine public buildings, imposing commercial structures, numerous churches and schools, well stocked stores, good walks and pleasant drives. Montpelier is a city, and yet, it also lies in the valleys of the Winooski and Worcester rivers, surrounded by wooded hills, green lawns and pleasant groves. In all its surroundings, throughout length and breadth, it is a natural park. It



STATE CAPITOL, MONTPELIER, VT.

Don't Fail to Read the Selected list of first-class Family Homes and Hotels for Summer Boarders following Descriptive.



WILLIAMSTOWN GULF.

is not only noted as being the seat of State government, but also for the extent and value of its industrial, banking and insurance interests, while its citizens are given credit for refinement and hospitality. As a summer home, Montpelier offers superior attractions to city residents and is a most pleasant place for a family outing of several weeks. It is pretty near the geographical center of Vermont, and lies within a six hour's ride of New York. It is the focus of three converging branches of railway, by all of which, places of great natural beauty and interest may be reached. Montpelier is the natural stopping place between the Lakes of George and Champlain and the White Mountains.



NEAR BARRE, VT.

Within easy riding distance by carriage from Montpelier, in the town of Berlin is Mirror Lake, a lovely little sheet of water two and a half miles long by one-half mile in width. Lying back from its shores are fine farms in high state of cultivation; numerous cottages are scattered along its banks. Cedar groves and pleasure grounds are conveniently near, affording excellent facilities for tent-life and bivouac. There are skiffs, sailboats and a small steam yacht on the lake.

Continuing our tour from Montpelier, on a branch road, we come to

This is the third city in VERMONT. Vermont in point of size, is located six miles southeast of the State capital, with which it is con-



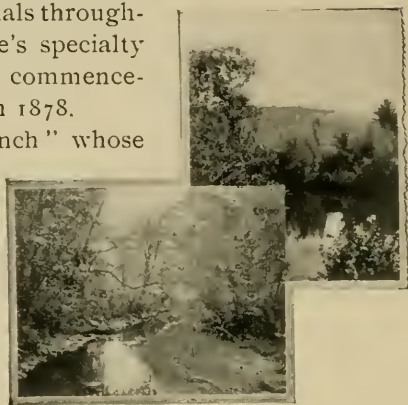
RESIDENCE OF MRS W. E. KINGSTON, NORTHFIELD, VT.

Don't Fail to Read the Selected list of first class Family Homes and Hotels for Summer Boarders following Descriptive.

nected by two lines of railway, with trains oftener than once an hour throughout the day. As the Granite Center of America the extensive quarries and busy sheds are visited each season by a large number of tourists, while occasional illustrated articles in leading journals throughout the country have kept Barre's specialty well before the public since the commencement of its phenomenal growth in 1878.

Located on "Steven's Branch" whose sources in Washington, Williamstown and Orange breed the spotted trout, and whose waters mingling with those of the Winooski, at the "Old Coffee House" in Montpelier, furnish a play ground for the increasing black bass. This "Granite City" furnishes a

rare combination of business push, beauty of scenery, healthfulness and attraction in varied ways for the sight-seers. Surrounded, as it is, by granite hills, the tops of which are easily accessible by rail or carriage road, and whose summits afford different and extensive views for miles in either direction, of the most magnificent scenic portion of our Green Mountain State. Barre is swiftly coming to the front in many ways aside from the prominence accorded it on account of its natural product. Next on the south is



WHITE RIVER.

connected by rail-
WILLIAMS- road with Barre,
TOWN, and a justly cele-
VERMONT, brated summer
 resort, the location of mineral
 springs whose curative prop-
 erties are too well known to
 need advertising. "Williamstown
 Gulf," "Williamstown
 Springs," "The Gulf House"
 and the "Gulf Road" are



WILLIAMSTOWN GULF.

about three thousand inhabitants, noted for their sobriety, intelligence, industry and thrift. The scenery is varied and picturesque, presenting an attractive place for such as wish to escape the dust and turmoil of city life during the most "heated term." The principal village is located in the valley of the Dog River, with a ridge of hills on two sides, affording delightful drives and walks for excursionists. Four miles to the west we reach the summit of Waitsfield Mountain, from which there is a fine view of the rich Mad River Valley, with the range of the Green Mountains beyond whose prominent peaks, Camel's Hump and Mansfield, are distinctly seen. Returning to the village and driving four miles to the northeast, a magnificent

names familiar to every Vermonter at home and abroad.

Continuing our journey on the main line again, south of Montpelier Junction, we reach first

which is situated in the very heart of the Green Mountains near the geographical center of the State, ten miles south of Montpelier. It has

NORTHFIELD, VERMONT,



NORTHFIELD, VERMONT.

panorama greets the eye, with the eastern range of the Green Mountains in the distance, presenting a more beautiful picture than the most skilled artist can portray. Nine passenger trains pass this station daily, except Sundays, four of these carry mail, affording the people excellent mail facilities. It has two small but well kept hotels, and a number of private boarding houses where the hungry and weary, as well as the pleasure seekers are thoughtfully cared for. If one is seeking a quiet, attractive home among an intelligent people, in a place whose natural features are most pleasing, whether for the summer or a longer time, it would be difficult to find one more beautiful for situation than Northfield.



VERMONT GUIDE, RANDOLPH, VT.

is a beautiful village, 1,400 feet above the level of **ROXBURY,** the sea, between two ranges of the Green Moun-
VERMONT, tains, fourteen miles south of Montpelier, and seven
 from Northfield, with fine mountain scenery and
 air, water as pure and sparkling as crystals, flowing from the
 rocky gorges in the hills on either side, furnishes a delightful
 place for the tourist and pleasure seeker and for those who are
 seeking rest from the cares and activities of the cities. Here
 are located the State fish hatcheries, and also the Green Marble



RESIDENCE OF A. B. MANCHESTER AND SON, RANDOLPH, VT.

Quarries, unsurpassed for beauty and fineness by any marble in
 the world.

After passing through Roxbury, where we cross the summit
 pass of the Green Mountains, East Granville and Braintree, we
 arrive at

where the traveler on every side sees evidences of
RANDOLPH, industry and prosperity. The town embraces five
VERMONT, villages, four of which lie in the valleys of the east
 and west branches of the White River. It pos-
 sesses a soil of rare fertility and productiveness, pure water in
 abundance, and an area of cultivated land found in few other

Don't Fail to Read the Selected list of first-class Family Homes and Hotels for
 Summer Boarders following Descriptive.



AROUND BETHEL, VT.

towns in the State. Its farmers are men of wealth and intelligence, and their business is profitable. Its picturesque scenery, good roads, pure water and bracing mountain air, and the hospitality of its citizens render it a most desirable resort for tourists and visitors.



VIEW FROM A. B. MANCHESTER'S, RANDOLPH.

is a progressive

BETHEL, village nestling in a narrow valley made by the **VERMONT,** White River cutting through the eastern range of the Green Mountains. Within a radius of ten miles are drives of unsurpassed grandeur and wildness. The village itself affords two hotels with all modern conveniences, while among the surrounding farms are found many havens of rest and recreation for the souls wearied by the turmoil of the city.

On the top of Christian Hill, two miles from the village, has been built the artificial Lake Ansel, covering about four or five acres of land, fed from pure springs near by and heavily stocked with gamey trout.

The village is 600 feet above the level of the sea, and the

lake 200 feet higher. The lake is famous for its cool summer breezes, and it is said that the temperature is ten degrees cooler than the village. Several cottages have already been erected near the lake and there are excellent changes for others. Infor-



BASCOM HOUSE, BETHEL VT.

Don't Fail to Read the Selected list of first-class Family Homes and Hotels for Summer Boarders following Descriptive.

mation in regard to sites and fishing rights may be procured by writing Lake Ansel Association, Bethel, Vt., which owns the surrounding lands.

At Bethel, travelers leave the Central Vermont

Railway for the surrounding towns of Barnard, Rochester, Stockbridge, Pittsfield and Hancock. Rochester Mountain 3,000 feet high, lies partly in Bethel and Lympus, Gilead, Sodom, New Jerusalem, New Boston and Mt. Hunger are points of local interest near by. In December, 1900, the new steam railroad from Bethel to Rochester, running through Gaysville and Stockbridge to Rochester, a distance of 16 miles into the very heart of the Green Mountains, was opened. The scenery and fishing for trout in this valley are unsurpassed, and it is always cool during the summer months.

ROYALTON, VERMONT, the next station, is pleasantly situated on the White River, surrounded by fertile fields. In all fair Vermont, there is no section which surpasses this in beauty of scenery, or in the comforts of its homes and the intelligence of its people. A ride of a few

moments more brings us to another railroad station in the same town.

**SOUTH
ROYALTON,
VERMONT,**

a village which possesses, in a bounteous manner, the quiet



RESIDENCE OF MRS. JAMES GIFFORD, ROCHESTER, VT.



RESIDENCE OF W. R. HOLLY, ROCHESTER, VT.

Don't Fail to Read the Selected list of first-class Family Homes and Hotels for Summer Boarders following Descriptive.

charms of unparalleled rural scenery, and the advantages secured by an intelligent and progressive population. In its attractions, the town as a whole, could hardly be excelled. The White River crosses the town from west to east, and presents a most attractive aspect as it winds rapidly over rock and pebble, amid the picturesque landscape scenes on either hand.

The steep declivities and green slopes bordering it are covered with green pastures, with shrubs and forest trees, pre-



senting variety of form, color, tint, and outline interspersed with neat and inviting farm-houses located on rising ground high above the bed of the stream, the rich intervalles of which are covered in summer and autumn with large fields of waving grain. All this country is rich in the early history of Vermont. The South Royalton Village Improvement Association tenders it courtesy, and will furnish additional information to those interested in this picturesque locality.

After leaving South Royalton, we soon reach

Don't Fail to Read the Selected list of first class Family Homes and Hotels for Summer Boarders following Descriptive.



NEAR SHARON, VT.

whose beauty
SHARON, of scenery is
VERMONT, coming to be
 recognized by
 an ever increasing number
 of tourists. From her there
 are stage connections with
 Strafford, the former home
 of the "Nestor" of the
 United States Senate, the
 late Justin S. Morrill.



NEAR SOUTH ROYALTON, VERMONT.

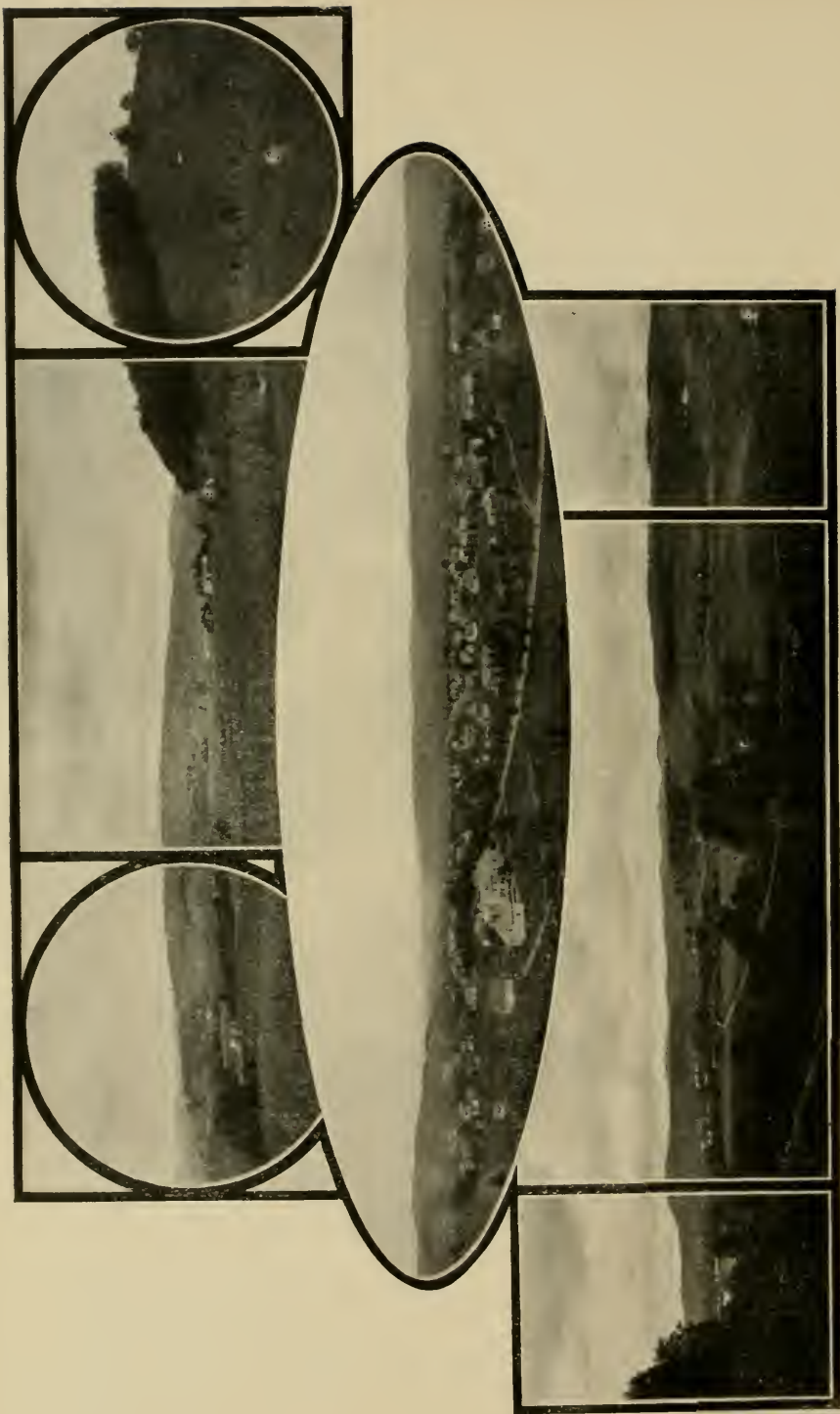
Passing rapidly through
 West Hartford, a small
 manufacturing village, we come to

one of the five prosperous villages in the town of
HARTFORD, the same name, one mile from White River Junction.
VERMONT, The main street occupies a terrace about
 seventy-five feet above and overlooking the White
 River. The village has concrete walks, electric lights, a fine
 public library recently built; is supplied with the best of water
 from the hillside, and has perfect drainage. In the vicinity, by
 the banks of the river whose water is clear as crystal, and among
 the many hills, will be found many pleasant drives. This town
 is the largest and wealthiest in the county, its farmers are



RESIDENCE OF JOHN F. SHEPHERD, SO. ROYALTON, VT.

Don't Fail to Read the Selected list of first-class Family Homes and Hotels for
 Summer Boarders following Descriptive.



RANDOLPH, VERMONT.

noted for their intelligence, thrift and their well tilled farms. is an important railroad center with valuable business interests. From this point, by a branch road a run of about an hour, brings us to the town of

**WHITE RIVER
JUNCTION,
VERMONT,**



SOUTH ROYALTON, VERMONT.

WOODSTOCK. one of the most attractive and prosperous villages in the State. The surface of the town is pleasantly diversified by hill and valley, the highest point being Mt. Tom, near Woodstock village, nearly 1,400 feet above tide water. The soil is rich and deep in most sections, making up one of the finest farming localities in the State. The inhabitants are unusually intelligent, and well-to-do, and their homes bear evidence of thrift and prosperity. The village has a large number of elegant residences, good churches and a fine public library, the gift of one of its sons, Dr. E. H. Williams of Philadelphia. It has been the birth-place and early home of a number of distinguished men, among whom were Hiram Powers, the sculptor, Hon. George

Don't Fail to Read the Selected list of first-class Family Homes and Hotels for Summer Boarders following Descriptive.

P. Marsh, lawyer, legislator, diplomat, author and renowned scholar, and Hon. Frederick Billings, financier, railroad builder and manager and philanthropist. It would be difficult to find anywhere a more delightful spot than this in which to spend the summer months.

At White River Junction again we take the train for the south, and the first stop is at

**NORTH
HARTLAND,
VERMONT,**

a station in one of the most prosperous farming towns in the Connecticut Valley. The surface of the town is diversified by hills and valleys, most of which are only great enough in extent to form a pleasing landscape picture without retarding the cultivation of the soil, which produces large crops of grain and grass. Highly cultivated farms and substantial farm houses are seen upon every side.

and Hartland
**HARTLAND,
VERMONT,** Four Corners
are two clean healthy villages on the line of the CENTRAL VERMONT RAILWAY. Hart-

land, the station for Hartland Four Corners, is a village situated one-half mile from the depot by a winding shady road. Hartland Four Corners is situated one and one-half miles from the depot and is reached by a beautiful drive along a pleasant, well shaded road. Nature has done a great deal for Hartland. There is beautiful scenery here; see the ledge of scenery near Merritt's mill, one would think this ledge had been carved to the shape that it is in, that is nature's work; see the beautifully arranged beds of flowers at the station.



SHARON, VERMONT.

Don't Fail to Read the Selected list of first-class Family Homes and Hotels for Summer Boarders following Descriptive.

is the terminus of **WINDSOR,** the Northern Division. It was a town of great importance in the early history of Vermont. Here, in a building still standing, and pointed out to visitors, met the convention which framed the first constitution of the State, July 2, 1777, and here the first legislature, elected under the constitution, met March 1778. Windsor is the summer



CARRIAGE DRIVE, RANDOLPH, VT.

home of many distinguished persons, such as Augustus St. Gauderes, the greatest sculptor in the world; Winston Churchill, the writer, author of "Richard Carvel," and many other high class books; L. E. Shipman, the writer; Chas. A. Platt, one of the world's leading architects; Hon. Frank A. Kennedy, the leading fancy cracker manufacturer of the world, and the late Hon. Wm. M. Evarts, ex-secretary of State.

Fifty miles below Windsor on the Connecticut River, we come to

BRATTLEBORO, town of about 8,000 inhabitants, and has the reputation of being in every sense, a live and progressive place. Brattleboro is also famous as a summer resort, the walks and drives through the surrounding

country giving pleasure and healthful recreation, amid an endless variety of scenery. The spring water which supplies the town, comes from various springs and is said to be the purest in New England. During the last year a carriage road has been constructed to the top of Mt. Wantastiquet, overlooking the village, where a fine



VERMONT DAIRY.

Don't Fail to Read the Selected list of first-class Family Homes and Hotels for Summer Boarders following Descriptive.

view can be obtained of the surrounding country, the outlook is some 1,500 feet above the river.

takes its name from its locality. The town was **NORTHFIELD, MASS.**, so called by the settlers, being the northernmost settlement on the Quinneh-tuk-ut, the long river with waves. Squakheage was the redman's name, because it was the one pithy word which expressed all he saw grouped around Northfield, of rivers, brooks, mountain ranges, meadows and abundant fishing places.



RESIDENCE OF AUSTIN V. ADAMS, ROYALTON, VT.

Many features combine to make Northfield a most desirable and safe summer resort. The old town itself is quaint, quiet, and morally clean. It is beautifully shaded, making the central street an elegant boulevard of charming vistas. The hills on every side always seem to be changing their color effects and perspective. From these hills extensive stretches of scenery in the Connecticut valley open up. Few other places in the land combine such a variety of peculiar interests and associations as this famous old town of Northfield. Here the late D. L. Moody successfully worked out his scheme of Christian Education and founded Northfield Seminary for young women in 1879, Mt. Herman School for young men in 1881, and the Northfield Bible Training School for men and women in 1889.

Don't Fail to Read the Selected list of first-class Family Homes and Hotels for Summer Boarders following Descriptive.

Three summer conferences for bible study are held each season in the Northfield Seminary buildings. Some of the leading bible teachers and preachers of the United States and England address these conferences.



FAIR VIEW FARM, E. B. GATES, NORTH HARTLAND, VT.

There are many points of interest in the vicinity, among which are the grounds and buildings of Northfield Seminary and Mt. Herman schools. "The Northfield," a charming, home-like summer hotel open from about June 10 to October 1, each year, Camp Northfield, Lovers' Retreat, Ice Cave, Hermit Rock, Bear's Den. besides various reminders of Indian days.

Don't Fail to Read the Selected list of first-class Family Homes and Hotels for Summer Boarders following Descriptive.



WHITE RIVER VALLEY SCENERY.

THE WEST RIVER VALLEY.



THE Brattleboro and Whitehall Division extends from Brattleboro to South Londonderry, Vt., thirty-six miles, passing through Williamsville, Newfane, Townshend, Wardsboro, Jamaica and Winhall. It is built along the bottom of a ravine in which there is barely room for a stream. The road in many places has been blasted out of the mountain side, and a fringe of trees left at the

water's edge throws deep shadows across the bed of the West River, while beyond the vista thus formed many a bright bit of rustic scenery stands out in strong relief. It would be tedious to attempt to describe the beauties of this charming gorge, which, in every rod of its devious ascent presents new and attractive features that bring forth some exclamations of surprise, admiration or wonder. Long before the end of the road is reached, our stock of expletives is exhausted, and as we realize the beauty and extent of the scenes through which we have passed, silence seems the only way of expressing the rapture with which we are filled.

Not far distant is a spot known as the "Devil's Den." Climbing a ledge of bold, overhanging rocks, covered with the primeval forest, we look down into a chasm of several hundred feet in depth, whence we see the tops of trees which have never

heard the sound of the woodman's axe; and thence up and away across a wide expanse of landscape, embracing extensive mountain ranges. It is, indeed, a wild and romantic spot.

A writer in *Outing* thus describes the view from the summit of one of the mountains near South Londonderry at an altitude of nearly 3,000 feet above the sea level:

"If one can imagine himself on the top of an immense wave in mid ocean, surrounded on all side by the swelling forms of storm vexed billows, and if these forms could be suddenly congealed, or rendered motionless, he would

have an adequate conception of the scene upon which our trio admiringly gazed. Away off to the north, the range, upon one of the spurs of which we stood, trended away in ever changing and varied shapes, until the more distant peaks melted tenderly into the cool gray of the clouds, and it became a matter of discussion which was vapor and which was solid earth. To the east, the undulations were less abrupt, but the eye wandered over the contour of the billowy ranges, resting at last upon the far distant horizon, where the peaks of the White Mountains cut the sky line and stood plainly relieved against the azure of the heaven above. Looking southward, the landscape gradually assumed a more pastoral appearance, the extreme distance being bounded by the Holyoke Range, sixty miles away; while



VIEW FROM MILLER HOUSE,
HANCOCK, VT.



"MILLER HOUSE," HANCOCK, VT.

Don't Fail to Read the Selected list of first-class Family Homes and Hotels for Summer Boarders following Descriptive.

westward, the Green Mountains surged and swelled in rock waves, peak rising above peak, range above range, culminating against the shadowy Adirondacks, whose ragged outlines alone separated them from the blue ether above them.

“The middle distance in each view was made up of

‘Hill rock-ribbed and ancient as the sun
 With vales stretching in pensive quietness between
 Venerable woods—rivers that
 Moved in majesty, and complaining brooks,
 That made the meadows green.’

with here and there a bright sheet of a silver lake, the taper spire of a village church, or the lazily ascending smoke of a rustic factory.”



CENTRAL VERMONT OFFICIAL ENGINE.

Don't Fail to Read the Selected list of first-class Family Homes and Hotels for Summer Boarders following Descriptive.

CANADIAN RESORTS.

MONTREAL, the commercial metropolis of the Dominion of Canada, is situated on the south shore of an island bearing the same name, and at the base of a beautiful eminence known as Mount Royal. The site of the city was first visited by Jacques Cartier in 1535. Champlain also visited it in 1611, but the first settlement was not formed until 1642, by M. de Maisonneuve. When Canada was conquered by the British in 1759, Montreal had a population of 4,000 souls.

Its present population is 300,000. The city is laid in the form of a parallelogram. It is built mostly of a grayish limestone from adjacent quarries, and with its handsome spires, glittering tin roofs, and the picturesque vales that stud its lofty background is seen to a great advantage from the river. The old part of Montreal near the river has narrow, incommensurate streets, but the new growth of the city toward Mount Royal has been liberally laid out with wide, cheerful thoroughfares. The architecture here is very fine.

Among places of interest may be mentioned the Parish Church of Notre Dame. The dimensions of this vast Norman edifice are 241 feet in length and 135 feet in width. Two main towers in front rise 220 feet, the western tower containing a peal of bells, one of which weighs upwards of 29,000 pounds and is the largest bell in Canada. The seating capacity of the church



BONAVENTURE STATION, MONTREAL, P. Q.

is 10,000. It has recently been decorated in deep colors and gold, after the manner of the Sainte Chappelle at Paris. Christ Church Cathedral on St. Catherine Street is undoubtedly the finest specimen of Gothic architecture in Canada. The Bank of Montreal, Post Office, City Hall, Bonsecour Market, Windsor Hotel, Church of Gesu, and many other churches, McGill College, etc., etc., are also worthy of mention.



VICTORIA BRIDGE.

**VICTORIA
JUBILEE
BRIDGE.**

The old Victoria Bridge, for many years one of the marvels of the nineteenth century, and one of the great attractions to tourists visiting Montreal, which cost \$6,300,000, was taken down at an enormous expense, and has been replaced with a new steel double track truss bridge; there is also a track for electric cars, a foot-path, and a roadway for teams. The bridge is known as the New Victoria Jubilee Bridge. It is about one and one-half miles in length and there is not another bridge in Canada equal to it.

QUEBEC was founded in 1608 by Samuel de Champlain on the site of the Indian village of Stadacono. No city on this continent so impresses the traveler by the startling peculiarities of the site and novelty of its general

Don't Fail to Read the Selected list of first-class Family Homes and Hotels for Summer Boarders following Descriptive.

aspect as this Ancient Capital, or stamps its impress so indelibly on the eye and memory. A massive wall of hewn stone, of nearly three miles in length, and varying, but everywhere of forbidding height and thickness, with projecting bastions and frowning cannon, encloses the better part of the Upper Town, and has led to Quebec being called the "Great Walled City of the North." The citadel, will, perhaps, prove the point of greatest interest to many, from the historical associations con-



ST. LOUIS GATE, QUEBEC.

nected therewith, and from the fact that it is considered an impregnable fortress. It covers an enclosed area of forty acres, and is some 340 feet above the river level. The zigzag passage through which you enter the fortress, between high and massive granite walls, is swept at every turn by formidable batteries of heavy guns. On the forbidding river walls, and at each angle or possible commanding point, guns of heavy calibre sweep every avenue of approach by river. Ditches, breastworks and frowning batteries command the approaches by land from the famed "Plains of Abraham." The precipitous bluffs, rising almost perpendicular from the river 340 feet, present a natural barrier which may be swept with murderous fire, and the cov-

Don't Fail to Read the Selected list of first-class Family Homes and Hotels for Summer Boarders following Descriptive.

ered ways of approach and retreat, the various kinds and calibre of guns, mortars, howitzers and munitions of war, all awaken eager interest.

the capital city of Canada, is said to be the most **OTTAWA**, picturesquely situated capital in the world. It is located on the Ottawa River, where the Rideau and the Gatineau join, and where the waters of the first named hurl themselves over the Chaudiere Falls into the seething caldron below. The national buildings, however, are the chief pride of Ottawa and the principal objects of interest to tourists. They



LACHINE RAPIDS.

stand out boldly on Parliament Hill, overlooking Ottawa, in all the beauty of seemingly varied architecture. They were erected at a cost of about \$5,000,000,00. The octagonal shaped library in the rear of the House of Parliament, is one of the most complete in Canada.

Other objects of interest are Rideau Hall, the home of the Governor-General of Canada, Rideau Canal built in 1827, for military purposes, Major Hill Park, the city buildings, extensive saw mills and the timber slides by which the square timber from the upper Ottawa passes down without damage into the navigable waters below.

Don't Fail to Read the Selected list of first-class Family Homes and Hotels for Summer Boarders following Descriptive.

THE ADIRONDACKS OF NEW YORK.



ADIRONDACK TROUT.

THE Adirondacks have sprung into sudden and universal fame and favoritism. The region has all the novelty of a primeval land, diversified by every variety of landscape and unsearched solitudes; and has the freshness and rare novelty of guides who alone know the secret wealth of this new paradise. The atmosphere is remarkably pure and free from malarious poisons and from chilling damps, so that sudden colds and tormenting fever heats are scarcely known. At present, the

Adirondacks may boast of its primeval charms; but the region will, doubtless, be materially altered in this respect e'er long, as visitors to this region are annually numbered by thousands.

In the valleys between the mountains lie many beautiful lakes and ponds, more than one thousand in number. The general level of these lakes is about 1,500 feet above the sea, but Avalanche Lake, the highest of them, has nearly twice that elevation. Some of them are twenty miles in length, while others cover only a few acres. "Steep, densely wooded mountains," says a writer in *Picturesque America*, describing the lakes "Rise from their margins; beautiful bays indent their borders, and leafy points jut out; spring brooks trickle in, while shallows are fringed with water grasses and flowering plants, and covered sometimes with acres of white and yellow water lillies. The lakes are all lovely and romantic in everything except their names; and the scenery they offer in combination with the towering mountains and the old and savage forests, is not surpassed on earth. In natural features, it greatly resembles Switzerland and the Scottish Highlands, as they must have been

Don't Fail to Read the Selected list of first-class Family Homes and Hotels for Summer Boarders following Descriptive.

before those regions were settled and cultivated." This labyrinth of lakes is connected by a very intricate system of rivers, rivulets and brooks.

**AU SABLE
CHASM,
NEW YORK.**

This great natural wonder, the Yosemite of the East, ranks next to Niagara Falls among nature's master-pieces, and should be visited by everyone in search of the extraordinary and beautiful in nature. Au Sable River in its passage from the Adirondacks



AU SABLE CHASM, N. Y.

Don't Fail to Read the Selected list of first-class Family Homes and Hotels for Summer Boarders following Descriptive.

to Lake Champlain has chiseled this vast fissure through the solid mountain. For countless ages this erosion has continued until the rocky walls, now overgrown with trees and ferns, rise precipitously on either side of the stream to the height of several hundred feet. Rushing over its sandy bed, the river leaps from a precipice 100 feet high into the Chasm, forming the beautiful Rainbow Falls, its misty veil tangled amid the wildest scenery. Passage through the Chasm is by means of long galleries,



LAKE OF THE CLOUDS, MOUNT MANSFIELD, VT.

bridges and stone stairways, and by boat over the rapids. A trip through this marvel of nature is marked by novelty, adventure and many delightful surprises.

After passing Rainbow Falls, the principal points noted are Horse Shoe Falls, Pulpit Rock, Elephant's Head, Devil's Head, Devil's Punch Bowl, Jacob's Ladder, The Fernery, Jacob's Well, Mystic Gorge, Point of Rocks, the Cave, the Grotto, Smuggler's Pass, the Post Office, where hundreds of visitors leave their cards; The Hanging Garden, Table Rock, The Altar, The Anvil, Cathedral Rocks, rising 100 feet above the level floor, and the Sentinel, where the batteaux are in readiness to take the tourists through the grand flume

Don't Fail to Read the Selected list of first-class Family Homes and Hotels for Summer Boarders following Descriptive.

These points, also other noted Adirondack points of interest are reached by the Central Vermont Railway, via Burlington and the Champlain Transportation Co., steamers via Westport, Port Kent or Plattsburg, also all rail via Malone Jnction or Moira.



LAKE PLACID, N. Y.

From here we have one of the finest views to be obtained in the Adirondacks. For miles the lake is visible, backed by many elevations of considerable beauty, while still further back tower the greater mountains of the wilderness, seen in their order from east to west—Whiteface, Marcy, McIntyre, Seward, Ampersand and Mt Morris. This view is one which will photograph itself on the mind with great distinctness and never become tiresome. Steamers ply on Upper Saranac Lake between Saranac Inn and the foot of the lake where are located Hotel Wawbeek, Rustic Lodge and Saranac Club.

The Saranac River, the outlet of the Saranac Lakes, passes through the village, furnishing an excellent

Don't Fail to Read the Selected list of first-class Family Homes and Hotels for Summer Boarders following Descriptive.

water-power which is utilized for manufacturing purposes. Little over a mile from the village is Lower Saranac Lake, which is six miles long, and in places nearly two miles wide. On its shores are several large hotels, and this may be said to be one of the most popular pleasure resorts in the forest. The lake contains between 40 and 50 small islands, and was called by the Indians "Lake of the Clustered Stars." Nine miles east from Saranac Lake is the noted Lake Placid.

**LAKE
PLACID,
NEW YORK.**

is reached by the Saranac & Lake Placid Railroad which connect the two resorts from which its name is derived. Lake Placid is nearly five miles long, about two miles wide, and contains three large and beautiful islands. Mirror Lake and Lake Placid, though within a few hundred feet of each other, are not connected.

**PAUL
SMITH'S,
NEW YORK.**

From this station there is an excellent carriage road to the old and well known resort "Paul Smith's Hotel," about three and one-half miles distant, and located on Lower St. Regis Lake. On the Lower St. Regis, Spitfire Pond and the Upper St. Regis Lake are a number of very costly summer camps owned by wealthy visitors of this section. St. Regis Mountain, a short distance from Paul Smith's Hotel, is a point of attraction, a grand view being had from its summit. The forest may be explored for miles from here, and delightful excursions may be taken daily through the numerous streams.

**RAINBOW
LAKE,
NEW YORK.**

Rainbow Lake station is two miles north of Paul Smith's station. The railway passes within a short distance of Rainbow Lake and Wardner Pond, both noted fishing grounds. Rainbow Lake Hotel stands adjacent to the station, and is extensively patronized by sportsmen and summer tourists.

**CHATEAUGAY
LAKE,
NEW YORK.**

There are two of the Chateaugay Lakes—the upper and the lower. The former is about four miles long and one mile wide. The latter is somewhat smaller. They are both very picturesque, and the several well managed hotels make this a popular resort. The Upper Lake is nearest Lyon Mountain station on the D. & H. Railroad, while the Lower Lake is nearest Chat-

eaugay station on the O. & L. C. Division of the Rutland R. R. A small steamboat running on both lakes leave little advantage to either route, the stage ride from Chateaugay to the Lower Lake being seven miles, and from Lyon Mountain to the Upper Lake four miles.

**UPPER
CHATEAUGAY
LAKE**

is one of those places where comfort, sport and recreation go hand in hand all summer, a popular resort, yet not so alarmingly fashionable as to prevent anyone from having a thoroughly enjoyable outing. Two mails a day keep the guests in communication with the outer world and plenty of game and fish promise lively times to all interested in wildwood sports.



HUNTING PARTY ON LINE OF CENTRAL VERMONT RAILWAY.

Don't Fail to Read the Selected list of first-class Family Homes and Hotels for Summer Boarders following Descriptive.



HIGHGATE SPRINGS, VT.

LAKE CHAMPLAIN,

ITS ISLANDS AND ADJACENT SHORES.



LAKE CHAMPLAIN BASS.

THAT Champlain is one of the most beautiful lakes in the world is a statement that goes unchallenged. It has furnished inspiration for the poet, the novelist and the historian; and its charms have long been celebrated in song and story, and yet the half has not been told. It is here that the delight of the traveler, of the rest and pleasure seeker, and of the lover of nature is supreme, both in anticipation and realization. The lake almost completely bounds by its waters, one entire county of Vermont, comprising the towns of Alburgh, Isle La Motte, North Hero, Grand Isle and South Hero. This is the smallest county in the State, but by no means is it the least in importance.

**ALBURGH,
VERMONT.**

is a tongue of land projecting into the lake from the Province of Quebec. With this exception the county is composed of islands, among them being Isle La Motte and North Hero, corresponding each to the town of the same name; South Hero which comprises the two towns of Grand Isle and South Hero, and is the largest island in the lake, and a number of small islands which usually belong to the towns nearest to which they lie. The towns are very much alike in their main characteristics, and a description of one would apply, in general, to the others. Though geologically these islands take us back to the time when "the earth was without form, and void," they now present to the eye as perfect a scene of landscape beauty, of inviting

Don't Fail to Read the Selected list of first-class Family Homes and Hotels for Summer Boarders following Descriptive.

groves, of rich and cultivated fields, and of neat country homes as can be found anywhere. A look into these homes would reveal the presence of industry, prosperity and taste, and in any one of them the wayfarer or invited guest would find himself among people of marked intelligence and unbounded hospitality.

The soil through the country is exceptionally good and produces in an abundant measure all the staple crops of this latitude. As a fruit growing region, for the harder varieties, it is



RESIDENCE OF F. G. CHEESMAN, EAST ALBURGH, VT.

probably unsurpassed in the United States; and the roads, well,—they are simply a marvel to the newcomer—while the old resident enjoys them, as a matter of course, pities his neighbor toiling along through the mud and sand, and leisurely jogs along at 2:40 gait. The foundation of these roads was laid sometime ago, it is thought in the Lower Silurian Age, and the material that has gathered since has been of the best for road-making. Repairs are made usually by putting on the road bed a liberal coating of the beautiful fine gravel found in abundance

Don't Fail to Read the Selected list of first-class Family Homes and Hotels for Summer Boarders following Descriptive.

upon the shores. A drive through this country is a matter of renown and is taken by hundreds every year.

For miles the highway is along or near the shore, and the succession of beautiful bays, bluff points, bold cliffs and gently sloping beaches, together with the ever-varying scene of distant hills and mountains, forms a picture beyond the skill of brush to paint or tale to tell. The islands are connected with each other and with the main land by bridges, so built that, except in some cases for the "draws," one might fancy them made by the same hand that formed the islands themselves. At different points are mineral springs of much fame and worth. In

**SOUTH
HERO,
VERMONT,** is the celebrated Iodine Spring, the water of which has proved so beneficial to hundreds in the past. Its curative qualities are constantly becoming better known and more highly valued. This spring is located in one of the most beautiful regions of all New England; the drives are unsurpassed, the fishing the best, the air pure and cool, and the scenery magnificent. This is sure to become one of the most popular resorts in the Champlain Valley. This island has communication every week-day by rail and boat with Burlington, and also with Maquam. A common and exceedingly satisfactory way to reach the islands is to drive from Milton station, or from Burlington by rail. Either route is delightful in the extreme, but via Milton you get the drive across the famous "Sand Bar Bridge," which is a mile in length and crosses the lake at a most charming point. For a mile before reaching the bridge, the drive is over what is known as the "Whittemore Road." This road is flanked for the entire distance on either side by a thicket of trees extending through lowlands which are covered with a luxuriant growth of vegetation, and which are becoming celebrated hunting grounds.

The country, as a whole, is a "rich find" for the geologist, and the seacher for fossils will be, especially at the quarries of Isle La Motte and at Providence Island, amply rewarded for his toil. In the summer, the shores of these islands are thickly dotted with camps, and every season cottages are built in desirable points by men of wealth from cities. Already is being rapidly fulfilled a prediction recently made, that in a few years

Don't Fail to Read the Selected list of first-class Family Homes and Hotels for Summer Boarders following Descriptive.

not an available spot on the shore would be left unoccupied. One who has spent one summer on these islands needs no invitation to come again. All the islands are easily reached by steamer or by rail. Lake Champlain is a paradise for those who long to fish, hunt, tramp and camp.

Yachting has become an important feature on the lake, with Burlington as its center. The Lake Champlain Yacht Club, with headquarters at Burlington, includes in its membership some of the most prominent men in Vermont, as well as many



in the larger cities. The club holds, each autumn, an inland regatta, and owns an elaborate club house costing about \$6,000.00, in the spacious reception rooms and parlors of which it dispenses its hospitality.

Following are a few of the most delightful "resorts" on and near the shores of Lake Champlain:—

**ISLE LA
MOTTE
VERMONT.**

one of the most beautiful islands of Lake Champlain reached by stage from Alburgh. The island is connected with Alburgh Tongue by a causeway, and from there by draw bridges with the chain of islands down the lake and finally with the main land near Bur-

Don't Fail to Read the Selected list of first-class Family Homes and Hotels for Summer Boarders following Descriptive.

lington, making a continuous drive of seventy miles. The roads of Isle La Motte and through the county of Grand Isle generally, are among the finest in the world for horses and bicycles, and the scenery of mountains (Green and Adirondacks) and the lake, is unsurpassed for great variety and beauty.

ALBURGH SPRINGS, VERMONT, also on Missisquoi Bay, where are located the famous Lythia Springs, to whose curative properties thousands throughout the country testify. On the opposite shore, a little to the south, are the delightful camping grounds of A. Niles, where individuals or families, with their own outfit, can enjoy the luxuries of a summer home at a moderate expense. These grounds are one-half mile from railroad station, one mile from post-office and store, and in the region of superb fishing.

Continuing south on the Vermont side of the shore is on Missisquoi Bay, a few miles north of St. Albans, at a station of the same name on the **CENTRAL VERMONT RAILWAY**. The popular Franklin House and cottages are located here, near the celebrated mineral springs.

HIGHGATE SPRINGS, VERMONT, with its summer hotel. For a quiet, picturesque resort, this place offers superior advantages. **MAQUAM BAY, VERMONT,** Maquam Bay is on the east shore of Lake Champlain, at the terminus of St. Johnsbury and Lake Champlain road, and is the most northern point, and in the region of the famous bass fishing grounds, two miles west of Swanton station.

About five miles south of Maquam Bay is **SAMSON'S.** Samson's Lake View House, off which are the richest of the fishing waters of the lake. As there is nothing so good as *facts* with which to prove the quality of a place, especially in the matter of fishing; address Samson's Lake View House, Vermont, for facts as to its being a fishing and health resort. Ladies, as well as gentlemen, spend the entire season at Samson's.

South of Samson's is Rocky Point a much frequented resort.

The amusements at these resorts and on the islands com-

prise excellent fishing and bathing, rowing and sailing (boats for rent), riding and driving, croquet and archery, and, in season, the best of shooting. Excursions are easily made from Isle La Motte to the Thousand Islands, Montreal, Quebec and Saguenay, Green and White Mountain resorts, and all Adirondack summer places, Ausable Chasm and Lake George, and many historic and picturesque places on Lake Champlain.



INTERIOR VIEWS OF HOTEL CHAMPLAIN, MAQUAM, VT.

On the New York shore of Lake Champlain, reached by the elegant steamers of the Champlain Transportation Company from Burlington, located at Bluff Point, N. Y., on one of the most commanding promontories of the lake is the new and magnificent Hotel Champlain, also Cliff Haven the point where the Catholic Summer School of America is located, three miles south of historic Plattsburg, near the mouth of the Saranac, Salmon and Ausable rivers.

These are all places where one is sure of comfort and of meeting "people one likes to know." But there are hundreds of places where one can be equally sure of the "Solitude where

Don't Fail to Read the Selected list of first-class Family Homes and Hotels for Summer Boarders following Descriptive.

none intrudes," where one may be as much alone with the universe as on a desert isle, yet an hour's tramp will bring him to a postoffice, fresh meat, milk, eggs, etc. This paradoxical position of proximity and distance is puzzling to strangers, but highly prized by the experienced.

That true sportsman, W. H. H. Murray, in his book "Lake Champlain and Its Shores," which all should read says:

"Having seen most of the localities of the continent noted for their beauty, I can declare that I know of no other spot, which for loveliness of appearance, majesty of scenery and varied resources of entertainment can compare with Lake Champlain. Nature has signalized, and history has emphasized it with such charms and attractions that it challenges the attention and invites the presence of all who love the one or are impressed by the other.

"To the yachtsman it affords opportunities and pleasure, navigation and amateur seamanship, as ample as sound or ocean coast supply; while to the canoeist and campist it extends, in its bays and rivers, its islands and shores, its golden beaches and bold promontories, ideal conditions of recreation and enjoyment and the health that comes to those who love outdoor life and world.

"You who long for health, peace and the new vigor which comes from restful days and quiet nights, filled with sweet sleep, which knits up the ravelled sleeve of care, should come to Lake Champlain to spend the summer. You who love the water, send your boats and yachts, or build them here, and I will warrant you such pleasant and spirited yachting as is rarely found. You who love tent and social camp-fire, verily is there room here for an army of tents, and yet one shall not see the other; you who need the rest and health found in pure, cool mountain air, come to the base of these hills, amid whose tops God generates the ozone of life, and floating on the level of the water breathe its vigor in."





MOUNT MANSFIELD, VT.

LIST OF FAMILY HOMES.

Recommended to Pleasure and Health Seekers for Rest and Recreation.



ALBURGH SPRINGS, VT.

Fred C Cheeseman. One-half mile from station, (East Alburg). Private conveyance free. Accommodate 6. Terms, \$5 per week for adults, children apply. Located on shores of Lake Champlain; excellent fishing; good table, pleasant drives. Churches near.

BETHEL, VT.

Mrs. Forrest Southard. Maplewood Farm. Railroad station, Bethel, Vt., one mile distant. Conveyance, private carriage. Accommodate 12. Terms, \$5 to \$7 per week; children not wanted. One mile from Congregational, Episcopal and Universalist churches. Located on hill; pleasant rooms; wide veranda; shady lawn. Good table. Teams. Good hunting and fishing, several deer killed in this vicinity every year.

Mrs. E. E. Cushman. Railroad station, Bethel, Vt., one-half mile distant. Conveyance, private carriage. Accommodate 8. Terms \$7 per week; special rates for season. Near churches. An ideal summer home where guests may find rest and refreshment from the heat and bustle of city life. House is situated on high hill commanding nice view; good carriage service; good rooms well furnished; bath; electric lights; good table; fresh vegetables and fruit from garden every day; plenty of cream, milk, fresh eggs, chickens and, in fact, everything for comfort. House open from June to November.

Geo. H Kimball. Railroad station, Bethel Vt., one-half mile distant. Conveyance, team. Plenty of shade trees on road to village. Good concrete walks from house to postoffice and depot. Terms, \$7 per week for adults, 4 for children. Accommodate 4 to 6 people.

BRAINTREE, VT

Eva M. Cahee. Railroad station, Braintree, Vt. Conveyance free. One-eighth mile from station. Accommodate 12. Terms \$6 per week. Two-story house; piazza on three sides; good table; plenty of milk, cream, vegetables and berries. Boating, fishing and hunting.

BRATTLEBORO, VT.

Mrs. J. W. Thurber. Railroad station, Brattleboro, Vt. Conveyance, private carriage or public coupe. Postoffice address, R. F. D., No. 1, Brattleboro, Vt. Accommodate 20. Terms, adults, \$6 to \$10, according to room and length of stay, children apply. Rates made to parties wishing to stay the whole season. Twelve churches within two miles. Picturesque scenery. Electric cars one-half mile away. Daily mail. Beautiful maple trees; shaded house and lawn; piazza; hammocks; well furnished rooms; piano. Good table; fresh vegetables, fruit, eggs and cream. Pleasant drives; good livery at moderate rates. Hunting and fishing. References on application.

Mrs. M. J. McVeigh. Railroad station, Brattleboro, Vt. Public or private conveyance 2½ miles from station. Accommodate 8. Terms, \$6 to \$9 per week for adults, children \$2 up. One mile from churches. Pleasant drives; beautiful scenery. High elevation. Plenty of shade. Weekly concerts. Ball games. Nice house; large and airy rooms. Piano. All things convenient. Near electric cars. Daily mail. Carriages. Good table; farm produce a speciality.

BRIDGEWATER CORNERS, VT.

Owen A. Cobb. Maple Grove Cottage. Railroad station, Woodstock, Vt., 5 miles distant. Stage or private conveyance. Accommodate 10. Terms, \$5 to \$10 per week for adults, children apply. 1½ mile to churches. Two story house; large piazzas; airy rooms; good beds. Located in valley of Ottaquebee river; surrounded by hills; scenery unsurpassed; beautiful walks and drives; large lawns; hammocks; croquet; piano. Good table; fresh vegetables, milk, cream and eggs. Good hunting and fishing in season; several deer killed in vicinity every year. Livery. Postoffice one-fourth mile; two mails per day. We enjoy a good time and want you to have one.

BURLINGTON, VT.

Mrs. C. C. Barker. Railroad station, Burlington, Vt., two miles distant. Public conveyance. Accommodate 20. Terms, \$8 to \$10 per week for adults, children apply. Five minutes from electric cars. Large house; large rooms; extensive piazza; beautiful lawns; grounds extend to Lake Champlain. Fine beach; good bathing and fishing. Table supplied with fresh fruits and vegetables from market garden on the place. References.

Mrs. Fanny Lee. Railroad station, Burlington, Vt., one mile distant. Public conveyance or electric. Postoffice address, No. 2, Colchester Ave. Accommodate 12. Terms, \$5 to \$8 per week for adults, children \$4. One-half mile from churches. Near Library. House large and cool; bathroom; piazza; shady lawn. Fine view of Lake Champlain. Good table. Excursions to nearby points of interest.

Mrs. Fred Manwell. Railroad station, Burlington, Vt., two miles distant. Carriage or electric cars. Postoffice address, North Ave., Burlington, Vt. Accommodate 2. Terms, \$5 to \$6 per week. Large rooms; pleasant lawns. Beautiful drives. Fresh fruit and vegetables grown on the place. Daily mail.

Mrs. H. A. Durfee, 128 Colchester Avenue, Burlington, Vt. One mile from station. Conveyance, electric cars. Accommodate 12. Terms, \$6 to \$8 per week for adults, children under six years, \$5. Near churches. Pleasant location; high and healthful. Good fishing in Lake Champlain. Great attention is given to the table. Best of milk, eggs, poultry and vegetables produced on the place.

EAST BRAINTREE, VT.

Mrs. Byron Wakefield. Railroad station, Randolph, Vt., $4\frac{1}{2}$ miles distant. Conveyance, daily stage or private carriage; guests met at the station. Accommodate 10. Terms, adults, \$5 to \$7 per week, children apply. Fine location; shady yard; large rooms; wide verandas; bath-room; hot and cold water up stairs and down. Milk, cream, vegetables and berries. Trout fishing. Fine roads. One minute walk from postoffice, telephone and church.

Mrs. Ella M. Dewey. Railroad station, Randolph, Vt., $6\frac{1}{2}$ miles distant. Conveyance, daily stage or private carriage. Pleasantly situated among the hills of Brookfield at an elevation of 1,400 feet in a farming community. Location healthy, high and quiet. Extensive view of western mountains. Good roads; pleasant walks and drives. Springwater, milk, eggs and vegetables supplied from the farm. Hunting and fishing. Telephone near by. Daily mail. Piano. Terms, \$4 per week and upwards for adults, children apply. Accommodate 8. New York references.

EAST ROXBURY, VT.

Frank E. Allen. Railroad station, Northfield, Vt., 6 miles distant. Conveyance, stage or private carriage. Accommodate 10. Terms, \$5 per week for adults, children apply. One mile to church. Fine scenery; splendid drives; good water and pure air. Large sleeping rooms. Sanitary conditions unsurpassed, elevation 1,500 feet. Dinners furnished to excursionists; teams when wanted. Hunting and fishing.

ENOSBURGH FALLS, VT.

Mrs. F. R. Perkins. Railroad station, Enosburgh Falls, Vt., within five minutes walk. Accommodate 4. Terms, \$4 to \$4.50 per week for adults, children, \$3. Near churches. Clean, well kept house; shady lawn and park. Good table; fresh vegetables, milk and cream. Fishing.

Mrs. May V. Caldwell. Railroad station, Enosburgh Falls, Vt., $\frac{1}{4}$ mile distant. Conveyance, carriage. Accommodate 12. Terms, \$5.50 to \$7 per week for adults, \$3.50 to \$4 for children. Near churches. High elevation; beautiful drives. Good house; electric lights; bath; new furniture; piano. Excellent table; fresh eggs, milk, cream, butter and vegetables.

ESSEX JUNCTION, VT.

Mrs. H. J. Fuller. Few rods from railroad station. Accommodate 8. Terms, \$4 to \$5 per week. Located near Ft. Ethan Allen, Burlington, and Lake Champlain. Electric cars pass the door. Early fruit and vegetables. Large farm. Pleasant house. Good fishing.

Mrs. L. D. Hopkins. Ten minutes walk from railroad station. Large, cool house and verandas, well shaded; lawn tennis and croquet grounds; house furnished with piano; hot and cold bath. Good fishing in river $\frac{1}{2}$ mile distant, and hunting near by. Ft. Ethan Allen 2 miles distant; also beautiful parks which can be reached by steam or electric. Terms per week, \$5 to \$7, children apply. Accommodate 16.

FAIRFAX, VT.

Mrs. Geo. H. Safford. Railroad station, Georgia, Vt., 4 miles distant. Private conveyance and stage. Accommodate eight or more. Terms, apply. $1\frac{1}{2}$ miles from churches. The house cool, with large windows; pleasantly situated; well shaded lawn. Table well supplied with fruits and vegetables in season. No children in family. Pleasant drives. Good hunting.

Mrs. R. C. Ballard. Railroad station, Georgia, Vt., $3\frac{1}{2}$ miles distant. Conveyance, stage Accommodate 6. Apply for terms. $\frac{1}{2}$ mile from church. Low rates; grand scenery; pleasant drives; pure air; good table.

FRANKLIN, VT.

William E. Patton. Railroad station, North Sheldon, Vt., 5 miles distant. Private conveyance and semi-weekly stage. Accommodate 20. Terms, \$5 per week for adults, children, \$3 "Silver Lake Cottage," situated few rods from Silver Lake and the best black bass fishing in New England. Fine groves; croquet grounds; hammocks. Very best table. Teams.

GRAND ISLE, GRAND ISLE COUNTY, VT.

D. I. Center. On shores of Lake Champlain; finest location on the island; easy access to steambot landing and railroad station, the former only a few steps, the latter one mile; no charge for conveyance for guests. Fine large house; cool rooms; good table; polite attendance Importance of early application urged Write for terms and other information. Postoffice address, Grand Isle, Vt. Telephone office, South Hero, Vt.

HALE, VT.

Mrs. F. E. Bennett. Railroad station, Brattleboro, Vt., 7 miles distant, private conveyance. Accommodate 8. Terms, \$5 to \$7 per week. $\frac{1}{2}$ mile from church. "Maple Ridge Farm" has all the attractions of a pleasant country home. Large rooms; piazza; pure spring water; eggs, milk and cream fresh every day Good hunting and fishing.

HALE P. O., WEST GUILFORD, VT.

Mrs. R. B. Thomas. Railroad station, Brattleboro, Vt., 7 miles distant. Private conveyance, free. Accommodate 16. Terms, \$5 to \$8 per week. Very high situation; shady walks and drives. Pleasant rooms and piazza. Hunting and fishing. Teams. Good table; ice, fresh cream, eggs and spring water.

HANCOCK, VT.

Arthur L. Miller. Railroad station, Rochester, Vt., on the White River Valley Railroad from Bethel, Vt., the nearest point on the Central Vermont Railway. Private conveyance or stage. Accommodate 25. Terms, \$6 per week for adults, children, \$4. Near churches. Pleasant locality. Good hunting and fishing. No mosquitoes. Good table.

HARTLAND FOUR CORNERS, VT.

Mrs. Isabel J. Cabot. Railroad station, Hartland, Vt., $1\frac{1}{2}$ miles distant. Stage or private conveyance. Accommodate 8. Terms, \$5 per week. Near church and postoffice. Good hunting and fishing. Fine drives. Good table; fresh milk, cream, fruit and vegetables from the farm.

Franklin G. Spear. Railroad station, Hartland, Vt., 4 miles distant. Private carriage or stage. Accommodate 10. Terms, \$7 to \$10 per week for adults, children apply. Large, two-story house; piazza; large sleeping rooms and new furniture. Good table; fresh eggs, cream and milk from the farm. Telephone.

HUNTINGTON, VT.

Mrs. Jennie Young. Railroad station, Richmond, Vt., 6 miles distant. Stage or private conveyance. Accommodate 4. Terms, \$5 to \$6 per week. $\frac{1}{2}$ mile from churches. House on high elevation. Fine mountain scenery. Cool rooms; plenty of shade. Good table; fresh milk, eggs, vegetables and all kinds of berries. Hunting and fishing.

Mrs. Nettie E. Fargo. Railroad station, Richmond, Vt., 6 miles distant. Accommodate 6. Terms, \$6 per week. No children wanted. Near churches. Pleasant location. Good house; cool rooms. Fine drives; good teams. Hunting and fishing. Good table; plenty of cream, milk, berries and vegetables. Sports of all kinds.

Mrs. T. H. Sweet. Railroad station, Richmond, Vt., 6 miles distant. Stage or private conveyance. Accommodate 6. Terms, \$6 per week for adults, children apply. Near churches. Fine location; pleasant drives. Good house; cool rooms. Healthy climate. Hunting and fishing. Good table a specialty.

JERICO, VT.

Mrs. Edson A. Nealy. Railroad station, Jericho or Richmond, Vt. Four miles distant from each place. Free carriage on notice. Accommodate 8. Terms, \$5 to \$7 per week for adults, \$4 for children. Fine location; high altitude. Magnificent views. Pure water. Plenty of shade. Good table; abundance of milk, cream, fresh eggs and vegetables.

Amv A. Nash. Railroad station, Richmond or Jericho, Vt., 6 miles distant from each. Private conveyance. Accommodate 8. Terms, \$5 per week. 2 miles from church. Altitude 800 feet. Large pleasant farm house. Pure air; pure water; good table. Delightful scenery. Quiet and restful place. Rural free delivery of mail. Telephone.

JERICO CENTER, VT.

Abel C. Hoskins. Railroad station, Jericho, Vt., 2½ miles distant. Private conveyance. Accommodate 12. Terms, \$5 to \$7 per week, children, \$3. New house; airy rooms; verandas; nice lawn. High elevation. Good roads for wheeling and driving. Fine scenery. Trout fishing. Good table; plenty of milk, cream, eggs, chickens, fresh vegetables and berries, meats, fish etc. Mail twice a day.

MILTON, VT.

A. H. Martin. Railroad station, Milton, Vt., 6 miles distant. Private conveyance. Accommodate 25. Terms, \$7 per week for adults, \$3 for children. Camp Martin is situated on east shore of Lake Champlain overlooking the lake and the beautiful Adirondack Mountains. High altitude with fine lawn and shade. Pure spring water. Cottages, boats, etc. Steamer chartered by the day for excursions among the islands. Pike and bass fishing. Daily mail. Telephone connection. Wide verandas.

H. D. Costello. Railroad station, Milton, Vt., 4 miles distant. Commodious house situated on bank of Lamouille river. Accommodate 10. Terms from \$3.50 to \$7 per week. Good table; good hunting and fishing; everything for the comfort of guests. Carriages.

MILTONBORO, VT.

David R. Bean. Railroad station, Milton, Vt., 7 miles distant. Private conveyance. Accommodate 30. Terms, adults \$6 to \$9 per week, children apply. Camp Rich Farm on Great Back Bay of Lake Champlain. Full view of numerous islands and Adirondack mountains. Fine beaches for bathing; spacious lawn; croquet; tennis and bowling; boats; cottages; verandas; piano and organ. Good roads. Daily mail; telephone connections. Good table. Preaching on campground Sundays during month of August. Best of fishing. Write for references.

MORETOWN, VT.

Mrs. Ernest Thomas. Railroad station, Middlesex, Vt., 4 miles distant. Private conveyance. Accommodate 4. Terms, \$5 per week, children not wanted. Large rooms; shady lawn; fine scenery; teams for use of guests. Good table; cream, eggs, fruit and vegetables. Ask for references. Hunting and fishing.

MOSCOW, VT.

Orsin S. Smith. Railroad station Waterbury, Vt., 8 miles distant. Electric road connects with all trains at Waterbury. House five minutes walk from electric; ten miles from summit of Mt. Mansfield. Our house is a modern, three story: has fine observatory from which the views of Mansfield, Hog Back, and Elmore Mountains are unsurpassed. Fine large rooms; all ceilings high, none less than nine feet; 480 feet of veranda. Bath, hot and cold water; best sanitary plumbing; pure and unfailing spring water. The beautiful Waterbury river flows by the house. Home cooking; best of everything raised on our farm; quarter mile distant from house. Postoffice across the road; mail three times per day. Terms, adults, \$6 to \$8 per week, children apply. References if desired.

NORTHFIELD, VT.

Mrs. Clara J. Staples. Three miles from Roxbury, the nearest railroad station. Private conveyance. Accommodate 12. Terms, \$4 to \$5 per week for adults, \$3 for children. Beautiful location. Nice house; good table; plenty of milk, cream and eggs, fruits of all kinds, high elevation, good hunting and fishing. References.

Mrs. W. E. Kingston, 2 miles from railroad station. Private conveyance. Accommodate 12. Terms, \$4 to \$6 per week, children apply. Daily mail. Cottage. Hunting and fishing. Good table; abundance of milk, cream, eggs, berries, etc. Livery. References.

Mrs. George Foss. Railroad station, Northfield, Vt., 5 miles distant. Stage daily. Accommodate 4. Terms, \$5 per week, children not wanted. Near churches. House situated on high elevation and has modern improvements. Good table; eggs, milk, and berries. Teams for use of guests. Write for particulars.

NORTH HARTLAND, VT.

Elisha B. Gates. Railroad station, North Hartland, Vt., 1½ miles distant. Private conveyance. Accommodate 30. Terms, \$5 to \$7 per week. High altitude: fine walks and drives. House large and airy; bath room with modern improvements; piano. Pine grove near house. Fresh milk, cream and eggs. Livery. Home life and living.

NORTH POMFRET, VT.

Obed Whipple. Railroad station, West Hartford, Vt. Stage. Accommodate 15. Adults, \$5, children, \$3 per week. 5½ miles from station. Fine location. Good table. Best of care. Write for particulars.

Mark E. Adams. Railroad station, West Hartford, Vt. 4 miles distant. Stage. Accommodate 10. Adults, \$5, children, \$3 per week. Good table. Write for particulars.

NORTH WILLISTON, VT.

Mrs. H. E. Bates. Railroad station, Williston, Vt. 2½ miles distant. Private conveyance. Accommodate 10. Terms, \$7 per week. Good house; electric lights; shade; mineral spring. Hunting and fishing. Good table.

POMFRET, VT.

Frederick A. Henry. Railroad station, West Hartford, Vt. $6\frac{1}{2}$ miles distant. Stage or private conveyance. Accommodate 6. Terms, adults, \$5 per week, children, \$2.50. A high, beautiful, and quiet location; dry air; cool breezes; magnificent views; good table. Everything done for the comfort of guests. Write for references.

PROSPER, VT.

Mrs. Elvira T. Howland. Railroad station, Woodstock, Vt. 3 miles distant. Mail team and private conveyance. Accommodate 6. Terms, \$5 per week. Children not taken. Mountains, lakes, and parks for excursions. Good hunting and fishing. Pleasant house; piazza; shade trees. Near postoffice and telephone.

RANDOLPH, VT.

A. B. Manchester & Son. Railroad station, Randolph, Vt. 1 mile distant. Private conveyance. Accommodate 14. Terms, \$1 per day. One mile from church. Fine scenery; pleasant drives; large piazza; fine lawn and shade trees. Good table. Write for references.

***ROCHESTER, VT.**

Edward L. Pierce. Railroad station, Rochester, Vt. 19 miles distant, reached by White River Valley Railroad from Bethel. House contains all modern improvements. Good table and everything up-to-date. Located in center of village facing the park. An abundance of trout streams in vicinity; good hunting in season; fine roads and many delightful drives. An ideal place for rest and recreation. Automobile. Accommodate 50. \$7 to \$10 per week.

H. C. Brownson. Railroad station, Rochester, Vt., on the White River Valley Railroad; Bethel, Vt., on the Central Vermont. Accommodate 8. Terms, \$6 per week. One mile from churches. Large roomy house; fine location. Hunting and fishing. Boat on river for use of guests. Good table.

Mrs. Jennie Gifford. Railroad station, Rochester, Vt. $\frac{3}{4}$ miles distant, or Bethel on the Central Vermont Railway. Stage. Accommodate 8. Terms, \$5 per week for adults, children, \$3.50. Fine views; lawn; shade trees; pleasant drives. Hunting and fishing. Excellent table.

Wm. R. Holly. Railroad station, Rochester, Vt., on the W. R. V. R. R., or Bethel on the C. V. Ry. Private conveyance. Accommodate 10. Terms, \$7 per week, children under seven years half rates. Five years' experience. Everything that is desirable in the line of scenery, pure air, walks, drives, hunting and fishing, board, etc. Write for particulars.

Mrs. Oscar G. Martin. Railroad station, Rochester, Vt., on the W. R. V. R. R., or Bethel on the C. V. Ry., five minutes walk from Rochester station. Accommodate 8. Terms, \$6 per week, children not desired. Near churches. Pleasant situation; fine views. Hunting and fishing. Good house; fine table and variety of food.

*Note:—The White River Valley Railroad runs between Bethel and Rochester, a distance of 20 miles. Purchase your tickets to Bethel, Vt., and re-purchase on the White River Valley Railroad, Bethel to Rochester.

ROYALTON, VT.

Mrs. Emma M. Corbin. Railroad station, $1\frac{1}{4}$ miles distant. Private conveyance. Accommodate 12. Terms, \$5 to \$7 per week, children apply. "Fairview Farm" is called the ideal summer home. Location fine; 80 feet piazza flooring; plenty of shade. Table supplied with the best that a farm and country market affords; fresh food every day, home cooked. Nice carriage service connected with house at low rates. Guests are allowed to feel at home and be comfortable. Write for references.

Geo. E. Dearing. 4 miles from station. Private conveyance. Accommodate 10. Terms, \$5 to \$7 per week, children apply. "Hillside Farm," situated on high elevation commanding fine view for miles. Shade trees; large grounds; drives; large rooms, piano. Daily mail; telephone. Livery and saddle horses at reasonable rates. Fresh milk, cream, eggs, vegetables and poultry. References on application.

A. W. Lyman. Railroad station, Royalton, Vt. 50 rods distant. Accommodate 10. \$5 to \$7 per week. Fine scenery; pure air and water. Delightful walks and drives. Good table; home cooking. Excursions to all points of interest in Vermont at low rates.

ST. ALBANS, VT.

Deforest D. Judd. Railroad station, Oakland, Vt., (North Georgia.) $\frac{1}{2}$ mile distant. Private conveyance. Postoffice address, R. F. D., No. 2, St. Albans, Vt. Accommodate 6. Terms, \$3.50 to \$5 per week, children apply. Short distance from Lake Champlain. Large house; broad piazza; spring water; plenty of milk, cream and eggs; fruit and vegetables fresh from the farm. Telephone in the house.

Mrs. A. K. Honsinger. Railroad station, St. Albans, or Swanton, Vt., either 4 miles distant. Public carriage or electric. Postoffice address, R. F. D., No. 1, St. Albans, Vt. Accommodate 6. Apply for terms. Children not wanted, and consumptives not taken. "Breezy Lawn." Large two-story house, centrally located; large veranda; well kept lawn; airy rooms; pure water and excellent drainage. Table supplied with all the luxuries of home garden. Twelve years' experience in caring for city guests; everything done for their comfort. One mile from electric. Daily mail.

Mrs. W. H. Merrick. Railroad station, Oakland, Vt., (North Georgia). 1 mile distant. Private conveyance. Accommodate 6. Terms, \$3 to \$5 per week, children apply. Short drive to Lake Champlain. Beautiful scenery; good hunting and fishing. Plenty of milk, cream and early fruit. Everything done for the comfort of our guests. Ask for references. Mail daily; telephone next door. Postoffice address, R. F. D., No. 2, St. Albans, Vt.

SO. ROYALTON, VT.

J. W. Bright. Railroad station few rods distant. Accommodate 15. Terms, \$5 to \$7 per week, children apply. "Brightwood." Large, two-story house with broad piazza; electric lights; fine lawn; good grounds for out door games; good vegetable garden; hot and cold baths.

Mrs. John F. Shepard. Railroad station, South Royalton, Vt. 2 miles distant. Private conveyance free. Accommodate 8. Terms, \$5 to \$7 per week, children not taken. Mill Brook Farm is located on the White River, at one of the pleasantest places in the White River Valley. House well shaded; broad piazza; best of table service; milk, cream and vegetables fresh from the farm. Hot and cold water and bathroom. Home care and comfort given to guests. Ask for references.

W. P. Hubbard. Few rods from railroad station. Accommodate 6. Terms, \$5 per week. House situated between river and mountains; good, large rooms; pure spring water; pure air; healthy climate; pleasant drives; good wholesome table.

W. E. Webster. One mile from station. Private conveyance. Accommodate 6. Terms, \$5 to \$7 per week. Magnificent views; healthy climate; good roads; pure spring water. Table supplied with the luxuries of the farm.

Chas. C. Southworth. $\frac{1}{2}$ mile from the station. Private conveyance. Accommodate 12. Terms, \$5 to \$7 per week. Excellent location; scenery unexcelled; pure water; large house; airy rooms; good table; milk, cream and eggs. Guests can feel at home. Iron spring on farm. All surrounding points of interest reached at small expense.

STOWE, VT.

Mrs. Geo. W. Adams. Railroad station, Waterbury, Vt. Electric cars to Stowe; 4 miles from electric station. Conveyance free. Accommodate 16. Terms, \$5 to \$7 per week, children apply. Good farm in connection with house to supply the table with food. Clean beds and rooms. Telephone, including long distance, in the house. Mail every day. Location high, surrounded by the finest scenery in Vermont. Two miles from Mt. Mansfield. Croquet grounds.

Geo. W. Harlow. Railroad station, Waterbury, Vt. Electric cars to Stowe, 5 miles distant. Private conveyance. Accommodate 15. Terms, \$6 to \$7 per week for adults. Children, \$3.50. Three miles from churches. Fine location among the mountains. Good teams furnished at low rates. Good table. Write for particulars.

SWANTON, VT.

Mrs. Nathan L. Skinner. Railroad station, St. Albans, Vt. 5 miles distant. Private conveyance. Postoffice address, R. F. D., No. 1, Swanton, Vt. Accommodate 14. Terms, \$6 per week, children apply. "Meadow Brook Farm" a healthy and pleasant place. Maple grove; pure water; good table; daily mail; telephone; fine drives; livery; hammocks; croquet; hunting and fishing. Everything done for the comfort of the guests.

TUNBRIDGE, VT.

Otis H. Weed. Railroad station, South Royalton, Vt. 7 miles distant. Stage and private conveyance. Accommodate 16. Terms, \$4 to \$6 per week. This house is a good, well arranged country farm house with beautiful surroundings and scenery. The Sulphur Spring on the farm has been noted for many years for its healthful properties and a cure for all diseases of the blood. Good hunting and fishing near by.

Benjamin Tucker. Railroad station, South Royalton, Vt. 5 miles distant. Stage and private conveyance. Accommodate 10. Terms, \$5 to \$7 per week. Many points of interest can be reached from "Brook Farm." Fine mountain drives; pleasant walks; delightful scenery; trout fishing in season. Home cooking; plenty of milk, cream, eggs and vegetables from our own garden.

UNDERHILL, VT.

Mrs. E. S. Sinclair. 5 minutes walk from the railroad station. Accommodate 20. Terms, \$1 per day and upward. Large, new three-story house with balcony; large verandas; airy rooms; spring water; nice lawn; croquet and tennis; drives. Good table; plenty of fresh milk, butter, eggs, and vegetables every day. Hunting and fishing. Modern improvements: piano. Saddle and driving horses at reasonable rates.

Lucy E. Rawson. $2\frac{1}{2}$ miles from station. Private conveyance. Accommodate 6. Terms, \$7 for adults, children apply. Pleasant surroundings. Broad verandas, shady lawn; large house. Daily mail. Milk, cream, vegetables and all the good things a farm provides.

WARREN, VT.

H. W. Lyford. Railroad station, Roxbury, Vt. 8 miles distant. Daily stage. Accommodate 6. Terms, \$10 per week for adults, \$6 for children. Situated in a small village in the heart of the Green Mountains. Fine scenery. Hunting and fishing. Good table. Livery near by. Write for particulars.

WATERBURY CENTER, VT.

Mrs. H. F. Hill. Railroad station, Waterbury, Vt. 2 miles from electric station. Private conveyance. Accommodate 4. Terms, \$5 to \$6 per week for adults, children, \$4. Good location; high elevation above the fog. Fresh vegetables, milk, cream, butter and eggs. Good references.

Elizabeth Colly. Railroad station, Waterbury, Vt. 4 miles distant. Electric cars. Accommodate 40. Terms, \$6 to \$8 per week for adults, children, \$5. Beautiful mountain scenery; delightful walks and drives; ample grounds. Hunting and fishing. Good table. Write for particulars.

WEST BOLTON, VT.

Mrs. R. Tomlinson. Railroad station, Jonesville, Vt. 5 miles distant. Free carriage. Accommodate 15. Terms, \$5 to \$7 per week. Rooms are large, airy and homelike; the table and attendance first class in every particular, the table being supplied with the choicest farm productions, the best of fresh meats, poultry, etc. The lawn is large and pleasant and is supplied with seats and hammocks. There are fine roads and delightful drives; magnificent scenery and extensive views overlooking many miles of country; the purest of mountain air; no malaria; excellent fishing; piano; croquet. References. Send for circular.

WEST HARTFORD, VT.

Arthur H Hazen. Railroad station, West Hartford, Vt. $1\frac{1}{2}$ miles distant. Private conveyance. Accommodate 25. Terms, \$7 per week, children apply. Superior table; high land; beautiful views; attractive wooded drives and walks; private game and deer park; private fish pond well stocked. Modern improvements; bath-room with hot and cold water; furnace; piazza.

WOODSTOCK, VT.

Mrs. Allen W. Eastman. Railroad station, Woodstock, Vt. 2 miles distant. Private conveyance. Accommodate 5. Terms, \$7 per week for adults, children, \$5. Beautiful drives; good hunting and fishing; good roads. Piano in the house. Good table; fresh milk, cream, eggs, vegetables, etc.

WEST WOODSTOCK, VT.

Mrs. J. A. Gallup. Railroad station, Woodstock, Vt. $2\frac{1}{2}$ miles distant. Stage. Accommodate 10. Terms, \$5 to \$8 per week, children apply. 2 miles from churches. Fine mountain drives. Good rooms and accommodations. Large lawn and piazza. Good table; abundance of fresh milk, cream, eggs, etc. Daily mail. Write for particulars.

WINDHAM, VT.

M. H. Ingalls. Railroad station, Wardsboro, Vt. Private conveyance. Accommodate 8. Terms, \$5 per week. Mountain View Farm situated at an altitude of 2,700 feet. Every thing neat and wholesome. Good table. Write for particulars.

PRINCIPAL SUMMER HOTELS

Among the Green Hills of Vermont, Islands and Shores of Lake Champlain.



ALBURGH SPRINGS, (EAST ALBURGH.)

Postoffice, East Alburgh, Vt. American House, W. N. Phelps & Son, proprietors. Distance from railroad station, 5 rods. Rates, apply. Accommodate 25, fifty feet above water.

BARRE.

Postoffice, Barre, Vt. Windsor House, Amos Hall, proprietor. Distance from station, $\frac{1}{2}$ mile. Terms, \$7 per week. Accommodate 25. Elevation, 850 feet.

Postoffice, Barre, Vt. Commercial House, R. A. Drew, proprietor. Distance from station, $\frac{1}{4}$ mile. Terms, \$7 per week. Accommodate 25.

BETHEL.

Postoffice, Bethel, Vt. Bethel Tavern, A. L. Pratt, proprietor. Distance from railroad station, 10 rods. Terms \$5 per week, transient, \$2 per day. Accommodate 25, 100 feet above water.

Postoffice, Bethel, Vt. Bascom House, J. M. Townshend, proprietor. Distance from railroad station, 10 rods. Terms, \$5 per week, transient, \$2 per day. Accommodate 20, 100 feet above water.

Postoffice, Barnard, Vt. Silver Lake House, E. Holmes, proprietor. Distance from railroad station, 9 miles. Adults, \$10, children apply, transient, \$2 per day. Accommodate 40, 250 feet above water.

BRATTLEBORO.

Postoffice, Brattleboro, Vt. Brooks House, Crosby & Adams, proprietors. Distance from railroad station, $\frac{1}{4}$ mile. Adults, \$10 to \$21 per week, children apply, transient, \$2.50 to \$3 per day. Accommodate 150, 400 feet above water.

Postoffice, Brattleboro, Vt. Hotel Brattleboro, T. F. Turner, proprietor. Distance from railroad station, $\frac{1}{8}$ mile. Adults, \$5 to \$10 per week, children half rates, transient, \$2 per day. Accommodate 50.

BRAINTREE.

Postoffice, Granville, Vt. Hubbard Hotel. H. C. Hubbard, proprietor. Distance from railroad station, 8 miles. Rates, \$3.50 per week. Accommodate 15.

Postoffice, Braintree, Vt. Braintree House, S. T. Farrington, proprietor. Distance from railroad station, $\frac{1}{2}$ mile. Adults \$3.50 per week, transient \$1 per day.

BURLINGTON.

Postoffice, Burlington, Vt. Van Ness House, U. A. Woodbury, proprietor. Distance from railroad station, $\frac{1}{4}$ mile. Rates, apply. Accommodate 300; 300 feet above water.

Postoffice, Burlington, Vt. Hotel Burlington, G. M. Delaney, proprietor. Distance from railroad station, $\frac{1}{4}$ mile. Rates, \$12 to \$21 per week. Accommodate 300; 300 feet above water.

Postoffice, Burlington, Vt. Riverside Park House, W. R. Chambers, proprietor. Distance from railroad station, 3 miles. Adults, \$1 to \$2 per day, children apply. Accommodate 30, located on lake shore.

CAMBRIDGE.

Postoffice, Cambridge, Vt. American House, E. C. Wells, proprietor. Distance from railroad station, 60 rods. Adults, \$7 to \$10 per week, transient, \$2 per day. Accommodate 20; 500 feet above water. Direct route through Smugglers' Notch to Mount Mansfield.

CAMBRIDGE JUNCTION.

Postoffice, Cambridge Junction, Vt. Junction House, J. A. Farrell, proprietor. Distance from railroad station, 10 rods. Adults, \$7 per week, children, \$5 per week, transient, \$1.50 per day. Accommodate 20.

EAST BERKSHIRE.

Postoffice, East Berkshire, Vt. Central House, B. L. Wilson, proprietor. Distance from railroad station, 20 rods. Adults, \$5 to \$7 per week, children apply. Accommodate 50.

Postoffice, Montgomery, Vt. Mansfield House, G. M. Patterson, proprietor. Distance from railroad station, 5 miles. Adults, \$5 to \$7 per week, children apply. Accommodate 25.

Postoffice, Montgomery Center, Vt. Central House, H. O. Rowley, proprietor. Distance from railroad station, $7\frac{1}{2}$ miles. Adults, \$5 to \$7 per week, children apply. Accommodate 40.

ENOSBURG FALLS

Postoffice Enosburg Falls, Vt. Quincy House, H. H. Best, proprietor. Distance from railroad station, 5 rods. Adults, \$5 to \$10 per week, children, \$4 to \$7, transient, \$2 per day. Accommodate 50; 150 feet above water.

ESSEX CENTER.

Postoffice, Essex, Vt. Ferguson House, D. J. Williams, proprietor. Distance from railroad station, 80 rods. Adults, \$7 per week, children apply, transient, \$1 per day. Accommodate 15; 200 feet above water.

ESSEX JUNCTION.

Postoffice, Essex Junction, Vt. Johnson's Hotel, Walter B. Johnson, proprietor. Distance from railroad station, 150 feet. Terms, \$10 to \$15 per week transient, \$2 per day. Accommodate 50; 300 feet above water.

GEORGIA.

Postoffice, Fairfax, Vt. Valley House, J. D. Shedd, proprietor. Distance from railroad station, 4 miles. Adults \$6 to \$10 per week, children, \$4 to \$6. transient, \$2 per day. Accommodate 25.

HARTFORD.

Postoffice, Hartford, Vt. The Hartford Inn, F. C. Johnson, proprietor. Distance from railroad station, $\frac{1}{2}$ mile. Adults, \$7 to \$12 per week, transient, \$2 per day. Accommodate 75.

HARTLAND.

Postoffice, Hartland, Vt. Hotel Hartland, J. H. Snow, proprietor. Distance from railroad station, $\frac{1}{2}$ mile. Adults, \$5, children, \$3 per week. Accommodate 30.

Postoffice, Hartland, Vt. Three Pines Inn, F. P. Daniels, proprietor. Distance from railroad station, $\frac{1}{2}$ mile. Adults, \$5, children, \$3 per week. Accommodate 10

HIGHGATE SPRINGS.

Postoffice, Highgate Springs, Vt. Franklin House, J. L. Scott, proprietor. Distance from railroad, 10 rods. Terms, \$12 to \$21 per week, transient, \$2.50 to \$3 per day. Accommodate 150; 150 feet above water.

Park View Cottage, E. H. Varney, manager. Distance from railroad station, 85 rods. Adults, \$7 to \$8 per week, children half price. Accommodate 25. Highgate Springs is situated in one of the most charming spots in all New England on beautiful Missisquoi Bay (Lake Champlain.)

JAMAICA.

Postoffice, Jamaica, Vt. Jamaica House, W. F. Gleason, proprietor. Distance from railroad station, $\frac{1}{2}$ mile. Rates apply. Transient, \$2 per day. Accommodate 50.

JEFFERSONVILLE.

Postoffice, Jeffersonville, Vt. Hotel Melendy, I. H. Melendy, proprietor. Distance from railroad station, 80 rods. Adults, \$7 per week, children apply. Transient, \$2 per day. Accommodate 25.

JERICO.

Postoffice, Jericho, Vt. Hotel Jericho, Wm. Folsom, proprietor. Distance from railroad station, 90 rods. Adults, \$8 to \$15 per week, transient, \$2 per day. Accommodate 20.

L. O. C.

MIDDLESEX.

Postoffice, Moretown, Vt. Sherman House, H. G. Sherman, proprietor. Distance from railroad station, 7 miles. Adults, \$4, children, \$3 per week, transient, \$1 per day. Accommodate 15.

Postoffice, Waitsfield, Vt. Waitsfield House, J. A. Carpenter, proprietor. Distance from railroad station, 13 miles. Adults, \$4 children, \$3 per week, transient, \$1 per day. Accommodate 20.

MILTON.

Postoffice, Milton, Vt. The Glenwood, C. F. Skeels, proprietor. Distance from railroad station, 6 rods. Adults, \$5 to \$6, children, \$3.50 per week, accommodate 25. First-class livery connected.

MONTPELIER.

Postoffice, Montpelier, Vt. Pavilion Hotel, J. S. Viles, proprietor. Distance from railroad station, 100 feet. Adults, \$8 to \$15 per week, special rates for children, transient, \$2 to \$3 per day. Accommodate 400; 700 feet above water

Postoffice, Montpelier, Vt. Montpelier House, A. S. Sparrow, proprietor. Distance from railroad station, 10 rods. Adults, \$7 to \$10 per week, transient, \$1.50 to \$2 per day. Accommodate 100.

NEWFANE.

Postoffice, Newfane, Vt. Windham County House, F. E. Davis, proprietor, and Newfane House, H. M. Burke, proprietor. Distance from railroad station, 20 rods. Terms, \$7 to \$10, children, \$5. Accommodate 25.

NORTHFIELD.

Postoffice, Northfield, Vt. Northfield House, M. E. Yarrington proprietor. Distance from railroad station, 30 rods. Adults, \$7 up, transient, \$2 per day. Accommodate 50; 500 feet above water.

NORTH SHELDON.

Postoffice, Franklin, Vt. Franklin House, H. B. Chaplin, proprietor. Distance from railroad station, 5 miles. Adults, \$6, children, \$3 per week, transient, \$1.50 per day. Accommodate 20; 500 feet above water.

NORTHFIELD, MASS.

Postoffice, Northfield, Mass. "The Northfield," Ambert G. Moody, manager. Distance from railroad station, $\frac{3}{4}$ mile. Rates, \$11.50 to \$33 per week, transient, \$2 to \$5 per day, children under ten years half price. Accommodate 175

Postoffice, Northfield, Mass. "Stimpson's Inn," S. S. Taylor, manager. Distant, $\frac{1}{4}$ mile from station. Rates, \$2 per day.

RANDOLPH.

Postoffice, Randolph Center, Vt. "The Maplewood," Thatcher Stone, proprietor. Distance from railroad station, 4 miles. Adults, \$12 per week, children apply. Accommodate 60; 500 feet above water.

Postoffice, Randolph, Vt. Red Lion Inn, A. Harnden, proprietor. Distance from railroad station, 5 rods. For rates by the week apply, transient, \$2 per day. Accommodate 50; 500 feet above water.

RICHFORD.

Postoffice, Richford, Vt. American House, J. F. Kelley, proprietor. Distance from railroad station, $\frac{1}{4}$ mile. Terms, \$7 to \$10 per week, transient, \$2 per day. Accommodate 40.

RICHMOND.

Postoffice, Richmond, Vt. Bellevue House, H. D. Kelley, proprietor. Distance from railroad station, 75 rods. Adults, \$7 per week, children, \$3.50 per week, transient, \$2 per day. Accommodate 30.

Postoffice, Huntington, Vt. Huntington House, E. D. Fuller, proprietor. Distance from railroad station, 6 miles. Adults, \$5 per week, children, \$2.50, transient, \$1.50 per day. Accommodate 25.

Postoffice, Huntington Center, Vt. Camel's Hump House, R. L. Delong, proprietor. Distance from railroad station, $8\frac{1}{2}$ miles. Adults, \$5, children, \$2.50 per week, transient, \$1.50 per day. Accommodate 25.

ROCHESTER.

Postoffice, Rochester, Vt. Rochester House, Q. M. Ford, proprietor. Distance from railroad station, 5 rods, reached via Bethel & White River Valley Railroad. Adults, \$10, children apply, transient, \$2 per day. Accommodate 50.

ROYALTON.

Postoffice, Royalton, Vt. Cascadnac House. G. D. Harrington, proprietor. Distance from railroad station, 20 rods. Adults, \$6 to \$8 per week, transient, \$2 per day. Accommodate 30; 500 feet above water.

ROXBURY.

Postoffice, Roxbury, Vt. Stanwix Hall, F. H. West, proprietor. Distance from railroad station, 20 rods. Modern conveniences, large, airy rooms, pleasant veranda, beautiful drives; good fishing and boating. Terms from \$4.50 per week. Accommodate 25; 1,400 feet above sea level.

SHELDON JUNCTION.

Postoffice, Sheldon, Vt. The New Portland, G. H. Thomas, proprietor. Distance from railroad station, $1\frac{1}{2}$ miles. Adults, \$5 to \$12 per week, children half rate, transient, \$2 per day. Accommodate 30. Open all the year.

SHARON.

Postoffice, Sharon, Vt. Sharon House, Patten Bros., proprietors. Distance from railroad station, $\frac{1}{2}$ mile. Adults, \$5, children, \$3 per week, transient, \$1 per day. Accommodate 15.

Postoffice, South Strafford, Vt. Barrett House, J. E. Kendall, proprietor. Distance from railroad station, $6\frac{1}{2}$ miles. Adults, \$5, children, \$3 per week, transient, \$1 per day. Accommodate 15.

Postoffice, Strafford, Vt. Strafford House, H. Silloway, proprietor. Distance from station, $8\frac{1}{2}$ miles. Terms per week, adults, \$5, children, \$3. Transients, \$1 per day. Accommodate, 15.

SOUTH LONDONDERRY.

Postoffice, South Londonderry, Vt. Peabody House, L. J. Strong, proprietor. Distance from railroad station, 30 rods. Adults, \$7 per week, transient, \$2 per day. Accommodate 25; 750 feet above water.

SOUTH ROYALTON.

Postoffice, South Royalton, Vt. South Royalton House, C. H. Woodward, proprietor. Distance from railroad station, 5 rods. Adults, \$10 per week, children apply, transient, \$2 per day. Accommodate 50.

STOWE.

Postoffice, Stowe, Vt. Green Mt. Inn, M. C. Lovejoy, proprietor. Distance from Waterbury, 10 miles. Adults, \$7 to \$10 per week, children apply, transient, \$2 per day. Accommodate 50; 700 feet above water.

ST. ALBANS.

Postoffice, St. Albans, Vt. American House, M. F. Spencer, proprietor. Distance from railroad station, 40 rods. Terms, \$2, \$2.50 and \$3 per day. Accommodate 100; 400 feet above water.

Postoffice, St. Albans, Vt. "Park View Hotel," William Landon, proprietor. Distance from railroad station, 50 rods. Adults, \$14 per week, children half price, transients, \$2 per day. Accommodate 50.

Postoffice, Lake View House, Vt. "Samson's," W. J. Samson, manager. Distance from railroad station, 6 miles. Adults, \$10 to \$12 per week, children apply, transient, \$2 per day. Accommodate 60. Distance from trolley road 3 miles.

ST. ARMAND.

Postoffice, Phillipsburg, P. Q. Arcadian Cottage, S. Borden, proprietor. Distance from railroad station, 2 miles. Adults, \$7 per week, children, \$3.50 per week. Accommodate 40, 100 feet above water.

Postoffice, Phillipsburg, P. Q. Champlain House, J. E. Fortin, proprietor. Distance from railroad station, 2 miles. Adults, \$7 to \$10 per week, children half price. Accommodate 75.

SWANTON.

Postoffice, Swanton, Vt. Hotel Champlain, C. F. Smith, proprietor. Distance from railroad station, 2 miles. Terms, \$10 to \$15 per week, transient \$2.50 per day. Accommodate 100, 75 feet above water.

Postoffice, Swanton, Vt. Hotel Swanton, G. A. Best, proprietor. Distance from railroad station, 90 rods. Adults, \$10 to \$14 per week, transient, \$2 per day. Accommodate 50.

Postoffice, Swanton, Vt. West Side Inn, Henry Tatro, proprietor. Distance from railroad station, 5 rods. Adults, \$10 to \$14 per week, transient, \$2 per day. Accommodate 20.

Postoffice, Swanton, Vt. American House, A. Roblston, manager. Distance from railroad station, 15 rods. Terms, \$3.50 to \$4.50 per week, transient \$2 per day. Accommodate 40; 75 feet above water.

UNDERHILL.

Postoffice, Underhill, Vt. Custer House, G. I. Lincoln, proprietor. Distance from railroad station, $\frac{1}{4}$ mile. Adults, \$7 to \$10 per week, transient, \$1.50 per day. Accommodate 40.

WATERBURY.

Postoffice, Waterbury, Vt. Waterbury Hotel, B. Barrett & Son, proprietors. Distance from railroad station, 10 rods. Adults, \$7 to \$10 per week, children apply, transient, \$2 per day. Accommodate 75; 80 feet above water.

WEST HARTFORD.

Postoffice, West Hartford, Vt. Wheeler House, F. P. Wheeler, proprietor. Distance from railroad station, $\frac{1}{2}$ mile. Adults, \$6, children, \$5 per week, transient, \$1 per day. Accommodate 5.

WHITE RIVER JUNCTION.

Postoffice, White River Junction, Vt. Junction House, Gibbs & Wheeler, proprietors. Distance from railroad station, 10 rods. Adults, \$10.50, children, \$5 per week, transient, \$2 to \$2.50 per day. Accommodate 150.

WILLIAMSTOWN.

Postoffice, Williamstown, Vt. Monument House, H. M. Courser, proprietor. Distance from railroad station, 30 rods. Adults, \$10 per week, children, \$5 per week, transient, \$2 per day. Accommodate 50; 1,100 to 1,200 feet above water.

Postoffice, Williamstown, Vt. Gulf House, Grainger & Cowles, proprietors. Distance from railroad station, $3\frac{1}{2}$ miles. Adults, \$10 to \$15 per week, children, half rates, transient, \$3 per day. Accommodate 50.

WINDSOR.

Postoffice, Windsor, Vt. Windsor House, H. A. Clark, proprietor. Distance from railroad station, 50 rods. Terms, \$5 per week, transient, \$2 per day. Accommodate 50.

Postoffice, Felchville, Vt. Valley House, W. L. Pratt, proprietor. Distance from railroad station 12 miles. Adults, \$3 to \$5 per week, transient, \$2 per day. Accommodate 50.

WOODSTOCK.

Postoffice, Woodstock, Vt. Woodstock Inn, Arthur B. Wilder, manager. Country Golf Links near; fine drives; good roads for cycling. For terms and plans address the manager.

WATERLOO, P. Q.

Postoffice, Waterloo, P. Q. Brooks House, L. G. Greene, proprietor. Distance from station, 1 mile. Terms per week, adults, \$4, children \$2. Accommodate 100.

Postoffice, Waterloo, P. Q. Canada House, A. E. Beaulne, proprietor. Distance from station, $\frac{1}{2}$ mile. Terms per week, adults \$4, children \$2. Accommodate 100.

Postoffice, Waterloo, P. Q. National House, J. Bernard proprietor, $\frac{1}{2}$ mile from station. Terms per week, adults, \$4, children, \$2. Accommodate 100.



MISSISQUOI PARK, HIGHGATE SPRINGS.

Summer Excursion Rates to Lake Champlain, Northern New York State, Adirondacks, St. Lawrence River and Canadian Resorts.

Subject to slight Changes June 1st.

	TO	FROM										
		Route Number.	Boston, Mass.	Fall River Mass., via Boston, transfer not included.	Hartford, Conn.	Holyoke, Mass.	Lowell, Mass.	New Haven, Conn.	New York, N. Y., via N. Y., N. H. & H. R. R.	Providence, R. I., via Worcester.	Springfield, Mass.	Worcester, Mass.
Acton, Que.		1	\$15.75	\$17.80	\$16.60	\$15.45	\$14.70	\$18.10	\$19.80	\$16.35	\$15.60	\$14.50
Alexandria Bay, N. Y.		2	16.90	18.95			16.90					16.70
Altona, N. Y.		3	14.15	16.20	13.85	12.85		15.35	18.35		12.85	
Ausable Chasm, N. Y.		4	11.85	13.90	12.85	11.75		14.35	14.85	12.50	11.85	10.75
Ayers (Lake Duane, N. Y.)		Ticket to Malone, N. Y.										
Bluff Point, N. Y.		5	11.95	14.00	11.85			13.35	14.95	12.60	10.85	10.85
Brushton, N. Y.		3	15.35	17.40	14.35	13.35	15.35	15.85	18.85	16.10	13.35	14.35
*Caledonia Springs.		6	18.65	20.10					21.95			
Champlain, N. Y.		3	13.35	15.40	13.20	12.20	12.55	14.70	17.70	13.85	12.20	12.10
Chateaugay, N. Y.		3	15.35	17.40	13.85	12.85	14.40	15.35	18.35	15.85	12.85	14.10
Chicoutimi, Que.		7	27.00	29.05	27.15	25.85	26.05	28.00	31.00	29.25	26.15	27.50
Childwood Station, N. Y.		8	15.35	17.40						16.10		14.35
Childwood Park House, N. Y.		9	17.35	19.40								
Elizabethtown, N. Y.		10	13.35	15.40			12.75					
Farnham, Que.		1	14.15	16.20	14.55	13.40	13.20	16.05		14.65	13.55	12.90
Ganby, Que.		1	14.25	16.30						15.35		13.60
Ha Ha Bay, Que.		11	27.00	29.05	27.15						26.15	27.50
Keene Valley, N. Y.		10	16.35	18.40						17.00		15.25
Lake Placid, N. Y.		8-12	17.10	19.15						17.85		16.10
Lake St. John (Roberval) Que.		13	29.00	31.05					33.00			
Lake St. John (Roberval) Que.		18	26.50	28.55	26.65	25.35	25.55	27.50	30.50	28.75	25.55	27.00
Loon Lake, N. Y.		8-12	15.35	17.40						16.10		14.35
Loon Lake House, N. Y.		14	16.60	18.65								
Lyon Mountain, N. Y.		12	13.99	16.05			14.00			14.64		12.89
Malone, N. Y.		3	15.35	17.40	13.85	12.85	15.00	15.35		16.10	12.85	14.35
Marieville, Que.		1	15.00	17.05			14.05			15.50		13.75
Moira, N. Y.		3	15.35	17.40	14.35	13.35	15.35	15.85		16.10	13.35	14.35
Montreal, Que.		1	15.75	17.80	15.95	14.80	14.70	17.45	18.25	15.95	14.95	14.50
Moore's Jet, N. Y.		3	13.65	15.70	13.55	12.50	12.75	15.05	18.05	14.15	12.55	12.40
Mountain View, N. Y.		Ticket to Malone, N. Y.										
Murray Bay, Que.		11-19	23.00	25.05					27.00			23.50
Norwood, N. Y.		3	16.00	18.05	14.35	13.35	16.00	15.85		17.20	13.35	15.45
Ogdensburg, N. Y.		3	16.90	18.95	14.35	13.35	16.90	15.85		18.45	13.35	16.70
Ottawa, Ont.		16-6	18.65	20.70	19.50	18.40	18.65	20.10	20.10	21.25	18.50	19.50
Paul Smith's Station, N. Y.		8	15.35	17.40						16.10		14.35
Paul Smith's Hotel.		9-14	16.85	18.90								
Plattsburgh, N. Y.		5	11.95	14.00	11.85	10.85	11.45	13.35		12.60	10.85	10.85
Quebec, Que.		17	19.00	21.05	19.15	17.85	18.05	20.00	23.00	21.25	18.15	19.50
Rouse's Point, N. Y.		1	13.10	15.15	12.95	11.95	12.30	14.45	15.40	13.60	11.95	11.85
Saranac Inn, N. Y.		9	17.35	19.40						17.10		15.35
Saranac Inn Station, N. Y.		8	15.35	17.40						16.10		14.35
Saranac Lake, N. Y.		7-12	15.35	17.40						16.10		14.35
Stanbridge, Que.		1	13.40	15.45	14.00	12.75	12.60	15.50	16.00	13.90	13.00	12.15
St. Hyacinthe, Que.		1	15.60	17.65	16.60	14.85	14.70	17.50	18.60	16.10	15.00	14.35
St. Johns, Que.		1	14.25	16.30	14.55	13.40	13.20	16.05	16.85	14.75	13.55	13.00
Sorel, Que.		1	17.35	19.30								
Waterloo, Que.		1	14.25	16.30	15.25	14.20	13.20	16.75	18.00	15.35	14.25	13.60
Westport, N. Y.		5	11.35	13.40						12.00		10.25

* Transfer from G. T. depot to C. P. depot in Montreal included.

† Rates are one dollar higher if applied via Q. & L. St. J. Ry. beyond Quebec.

For Routes see page 106.

Summer Excursion Rates.—Continued.

ROUTES.

1. Rail via White River Junction, returning same.
2. Rail via White River Junction and Rouses Point to Ogdensburg, thence steamer, returning same.
3. Rail via White River Junction and Rouses Point, returning same.
4. Rail via White River Junction to Burlington, steamer to Port Kent, thence rail, returning same.
5. Rail via White River Junction to Burlington, thence steamer, returning same.
6. Rail via White River Junction and Montreal, returning same.
7. Rail via White River Junction to Montreal, steamer or rail to Quebec, steamer to Chicoutimi, returning steamer to Quebec, rail or steamer to Montreal, thence rail via White River Junction to starting point.
8. Rail via White River Junction, Rouses Point and Malone Junction, returning same.
9. Rail via White River Junction, Rouses Point, Malone Junction and stage, returning same.
10. Rail via White River Junction to Burlington, steamer to Westport and stage, returning same.
11. Rail via White River Junction to Montreal, steamer or rail to Quebec, thence steamer, returning same.
12. Rail via White River Junction to Burlington, steamer to Plattsburg, thence rail, returning same.
13. Rail via White River Junction to Montreal, rail or steamer to Quebec, rail to Lake St. John, rail to Chicoutimi, steamer to Quebec, rail or steamer to Montreal, rail via White River Junction to starting point.
14. Rail via White River Junction to Burlington, steamer to Plattsburg, thence rail and stage, returning same.
15. Rail via White River Junction, Rouses Point and Moira, returning same.
16. Rail via White River Junction and Swanton, returning same.
17. Rail via White River Junction to Montreal, thence steamer or rail, returning same.
18. Rail via White River Junction to Montreal, steamer or rail to Quebec, thence Q. and L. St. J. Ry., returning same.
19. Rail via White River Junction to Montreal, steamer or rail to Quebec, I. C. Ry. to Riviere Ouelle, thence steamer, returning same.



SLIP HILL, MIDDLESEX, VT.

Round-Trip Excursion Rates to Vermont Points.
Subject to slight Changes June 1st.

TO	FROM								
	Boston, Mass.	Bridgport, Conn.	Fitchburg, Mass.	Greenfield, Mass.	Hartford, Conn.	Holyoke, Mass.	Lawrence of Lowell, Mass.	Manchester, N. H.	
Alburgh	\$12.85	\$15.15	\$	\$10.55	\$12.55	\$11.80	\$	\$11.25	
Barre	9.90	12.50			10.35		9.50		
Bethel	7.65	10.25			8.10	6.80	7.25	5.50	
Bolton	† 10.35	13.00		8 35	10 85				
Braintree	8.30	10.90			8.75		7.90	6.15	
Brattleboro	4.75	5.70	3.00		3.50				
Burlington	11.60	13.60	9.50		11.60	10.35	10.20	9.50	
Cambridge	12.10	14.70			12.60	11.65			
Cambridge Junction	12.35	14.95			12.95	11.70	11.55		
Colchester	10.65	13.85			11.25				
East Alburgh (Alburgh Springs)	12.85	15.15	11.35	10.55	12.95				
East Berkshire	12.75	15.95			13.75				
East Granville	8.50	11.10			8.95				
East Swanton	12.60	15.15			12.95				
Enosburgh Falls	12.75	15.55			13.35	12.20		11.00	
Essex Center	11.15	13.75			11.75			9.25	
Essex Junction	11.00	13.60			11.60	10.35	10.20		
Georgia	11.75	14.35	10.15		12.35	11.10	10.95		
Green's Corners	12.40	15.00			13.00				
Hartford	6.55	9.15			7.00				
Hartland	6.55	8.60			6.45				
Highgate Springs	12.85	15.40			13.20	12.05	11.65		
Jamaica	6.30	7.25			5.05				
Jeffersonville	12.25	14.85			12.85				
Jericho	11.35	13.95			11.95				
Jonesville	10.50	13.15			11.60			8.40	
Middlesex	† 9.80	12.40			10.25		† 9.40		
Milton	11.60	14.20	10.00	9.70	12.20		10.80		
Montpelier	† 9.55	12.20			10.00	8.70	† 9.15	7.40	
Newfane	5.55	6.50			4.30				
Northfield	† 9.00	11.65			9.50	8.20	8.65	6.90	
Northfield Falls	† 9.15								
North Duxbury	† 10.25	12.90			10.75				
North Enosburgh	12.75	15.85			13.75				
North Hartland	6.90	8.75			6.60				
North Shelton	12.75	15.45			13.35				
Oakland	11.90	14.50			12.50				
Randolph	8.00	10.60			8.45	7.15	7.60	5.85	
Richford	† 12.95	15.95			13.75	12.60	12.35	11.35	
Richmond	† 10.65	13.35			11.20	9.90	10.20		
Roxbury	8.75	11.35			9.20		8.35	6.60	
Royalton	7.40	10.00			7.85		7.00		
Sharon	7.05	9.65			7.50		6.65		
Shelton Junction	12.60	15.35			13.25				
Shelton Springs	12.60	15.20			12.20				
South Franklin	12.75	15.00			13.35				
South Londonderry	6.90	7.85			5.65				
South Royalton	7.30	9.90		5.25	7.75		6.90	5.15	
South Vernon	4.25								
St. Albans	12.15	14.75			12.75	11.50	11.35	10.25	
Swanton	12.60	15.15			12.95	11.80	11.80		
Townshend	† 5.80	6.75			4.55				
Underhill	11.60	14.20	10.10		12.20	10.95			
Wardsboro	6.15	7.10			4.90				
Waterbury	† 10.00	12.65			10.50	9.20	9.60	7.90	
West Dummerstown	5.20	6.15			3.95				
West Hartford	6.80	9.40			7.25				
West Townshend	6.10	7.05			4.85				
White River Junction	6.40	9.00	5.70		6.85	5.55			
Williamstown	† 10.20	12.90			10.75	5.55			
Williamsville	5.35	6.30			4.10				
Williston	† 10.90	13.60			11.45				
Winhall	6.75	7.70			5.50				
Windsor		8.35			6.20				
Winooski	11.00	13.60	9.50		11.60		10.00		

Rates from Baltimore, Md., \$.80 more than rates from New York, shown on pages 108 and 109.

Round trip tickets on sale from June 1 to September 30, with final return limit November 1, 1903.

Round-Trip Excursion Rates to Vermont Points.

Subject to slight Changes June 1st.

TO	FROM	Meriden and Middletown, Conn.	Nashua, N.H.	New Britain, Conn.	New Haven, Conn.	New London, Conn.	New York, N. Y. All Rail via Springfield.
Alburgh.....		\$13.75	\$11.35	\$13.40	\$14.45	\$12.35	\$15.40
Barre.....		11.15	8.40	10.80	11.80	10.85	13.95
Bethel.....		8.90	6.15	8.55	9.55	10.30	12.55
Bolton.....		11.65		11.30	12.30	10.50	13.60
Braintree.....		9.55	6.80	9.20	10.20		12.20
Brattleboro.....		4.30		3.95	5.00		8.00
Burlington.....		12.40	9.50	12.05	13.10	10.50	13.60
Cambridge.....		13.50		13.15	14.20	11.60	14.70
Cambridge Junction.....		13.75		13.40	14.45	11.85	14.95
Colechester.....		12.65		12.30	13.35	10.75	13.85
East Alburgh (Alburgh Springs).....		13.40	11.35	13.40	14.45	12.35	15.40
East Berkshire.....		14.55		14.20	15.25	12.85	15.95
East Granville.....		9.75		9.40	10.40	10.50	13.40
East Swanton.....		13.75		13.40	14.45	12.05	15.20
Enosburgh Falls.....		14.15	11.45	13.80	14.85	12.60	15.70
Essex Center.....		12.55		12.20	13.25		13.75
Essex Junction.....		12.40		12.05	13.10	10.50	12.60
Georgia.....		13.15		12.80	13.85	11.25	14.35
Green's Corners.....		13.85		13.45	14.50		15.00
Hartford.....		7.80		7.45	8.45		11.45
Hartland.....		7.25		6.90	7.90	8.65	10.90
Highgate Springs.....		14.00		13.65	14.70	12.35	15.45
Jamaica.....		5.85		5.50	6.55		9.55
Jeffersonville.....		12.65		13.30	14.35		14.85
Jericho.....		12.75		12.40	13.45	10.80	13.95
Jonesville.....		11.80		11.45	12.45		13.60
Middlesex.....		11.05		10.70	11.70		13.60
Milton.....		13.00		12.65	13.70	11.10	14.20
Montpelier.....		10.80		10.45	11.50	10.50	13.60
Newfane.....		5.10		4.75	5.80		8.80
Northfield.....		10.30	7.55	9.95	10.95	10.50	13.60
North Duxbury.....		11.55		11.20	12.20		13.60
North Enosburgh.....		14.55		14.20	15.25		15.85
North Hartland.....		7.40		7.05	8.05		11.05
North Sheldon.....		14.15		13.80	14.85		15.45
Oakland.....		13.30		12.95	14.00		14.50
Randolph.....		9.25		8.90	9.90	10.50	12.90
Richford.....		14.55		14.20	15.25	13.10	16.20
Richmond.....		12.00		11.65	12.65	10.50	13.60
Roxbury.....		10.00		9.65	10.65	10.50	13.60
Royalton.....		8.65	5.90	8.30	9.30		12.30
Sharon.....		8.30	5.55	7.95	8.95	9.70	11.95
Sheldon Junction.....		14.15		13.80	14.85	12.25	15.35
Sheldon Springs.....		14.00		13.65	14.70	12.10	15.20
South Franklin.....		14.15		13.80	14.85	12.40	15.50
South Londonderry.....		6.45		6.10	7.15		10.15
South Royalton.....		8.55	5.80	8.20	9.20	9.95	12.20
South Vernon.....							7.50
St. Albans.....		13.55	10.65	13.20	14.25	11.65	14.75
Swanton.....		13.75		13.40	14.45	12.10	15.20
Townshend.....		5.35		5.00	6.05		9.05
Underhill.....		13.00		12.65	13.70	11.10	14.20
Wardsboro.....		5.70		5.35	6.40		9.40
Waterbury.....		11.30		10.95	11.95	10.50	13.60
West Dummerstowd.....		4.75		4.40	5.45		8.45
West Hartford.....		8.05		7.70	8.70	9.45	11.70
West Swanton.....		13.75		13.40	14.45		15.40
West Townshend.....		5.65		5.30	6.35		9.35
White River Junction.....		7.65		7.30	8.30	9.05	11.30
Williamstown.....		11.55		11.20	12.20	11.25	14.35
Williamsville.....		4.90		4.55	5.60		8.60
Williston.....		12.25		11.90	12.90		13.60
Winhall.....		6.30		5.95	7.00		10.00
Windsor.....		7.00		6.65	7.65		10.65
Winooski.....		12.40	9.50	12.05	13.10	10.50	13.60

Round trip tickets on sale from June 1 to September 30, with final return limit November 1, 1903. † Continuous passage.

Round-Trip Excursion Rates to Vermont Points.

Subject to slight Changes June 1st.

TO	FROM	New York, N. Y., via Norwich Line.	Northampton, Mass.	Norwich, Conn.	Palmer, Mass.	Pawtucket, R. I., via Worcester.	Providence, R. I., via Worcester.	Salem, Mass.	South Norwalk, Conn.	Springfield, Mass.
Alburgh	\$12.35	\$11.55	\$12.35	\$11.70	\$15.40	\$11.95
Barre	10.85	10.85	9.35	11.05	11.20	13.10
Bethel	10.50	6.45	9.70	7.10	8.40	8.55	7.65	10.85	7.10
Bolton	10.50	9.20	10.50	9.85	11.35	11.50	13.60	9.85
Braintree	10.50	9.45	9.60	8.30	11.50
Brattleboro	7.00	6.30
Burlington	10.50	10.10	10.50	10.05	11.15	11.30	13.60	10.60
Cambridge	11.60	11.30	11.60	11.15	12.25	12.40	14.70	11.85
Cambridge Junction	11.85	11.45	11.85	11.40	12.50	12.65	14.95	11.95
Colchester	10.75	10.75	11.45	11.55	11.25	13.85
East Alburgh (Alburgh Spgs)	12.35	11.55	12.35	11.50	13.20	13.35	15.40	11.95
East Berkshire	12.85	12.85	12.05	13.40	13.55	15.95
East Granville	10.50	10.50	11.70
East Swanton	12.05	11.55	12.10	11.40	15.20	11.95
Enosburgh Falls	12.60	11.95	12.60	11.80	13.15	13.30	15.70	12.35
Essex Center	10.65	11.25	11.40	13.75
Essex Junction	10.50	10.10	10.50	10.05	11.10	11.25	13.60	10.60
Georgia	11.25	10.85	11.25	10.80	11.90	12.15	14.35	11.35
Green's Corners	11.90	15.00
Hartford	10.45	7.50	7.65	9.75
Hartland	9.90	8.05	5.45	9.20
Hillegate Springs	12.35	12.35	11.50	13.20	13.35	15.45	12.20
Jamaica	8.55	7.85
Jeffersonville	11.75	14.85
Jericho	10.85	10.85	10.40	11.70	11.85	13.95
Jonesville	10.50	13.60
Middlesex	10.50	10.95	11.05	13.00
Milton	11.10	10.70	11.10	10.65	11.75	11.90	14.20
Montpelier	10.50	10.50	9.00	10.45	10.60	12.80	9.00
Newfane	7.80	7.10
Northfield	10.50	7.85	10.50	8.50	9.95	10.10	9.05	12.25	8.50
North Duxbury	10.50	13.50
North Enosburgh	12.75	13.55	13.70	15.85
North Hartland	10.05	9.35
North Sheldon	12.35	13.10	13.25	15.45
Oakland	11.40	11.60	11.75	14.50
Randolph	10.50	6.80	10.05	7.45	8.90	9.05	8.00	11.20	7.45
Richford	13.10	12.25	13.10	12.30	13.85	14.00	12.75	16.20	12.75
Richmond	10.50	9.55	10.50	10.05	11.35	11.50	13.60	10.20
Roxbury	10.50	10.50	8.20	9.65	9.80	11.95
Royalton	10.50	8.30	8.45	10.60
Sharon	10.50	9.10	6.50	8.20	8.35	7.05	10.25
Sheldon Junction	12.25	12.25	11.40	12.95	13.05	15.35
Sheldon Springs	12.10	12.10	11.40	12.95	13.05	15.20
South Franklin	12.40	12.40	12.90	13.05	15.50
South Londonderry	9.15	8.45
South Royalton	10.50	6.10	9.35	6.75	8.20	8.35	7.30	10.50	6.75
South Vernon	6.50
St. Albans	11.65	11.25	11.65	11.00	12.50	12.65	12.15	14.75	11.75
Swanton	12.10	11.55	12.16	11.40	12.95	13.10	15.20	11.95
Townshend	8.05	7.35
Underhill	11.10	10.70	11.10	10.65	11.95	12.10	14.20	11.20
Wardsboro	8.40	7.70
Waterbury	10.50	8.85	10.50	9.50	11.20	11.35	9.85	13.25	9.50
West Dummerstown	7.45	6.75
West Hartford	10.50	5.60	8.85	6.25	7.95	8.10	6.80	10.00	6.25
West Swanton	12.35	15.40
West Townshend	8.35	7.65
White River Junction	10.30	5.20	8.45	5.85	6.40	9.60	5.85
Williamstown	11.25	11.25	9.75	11.45	11.60	13.50
Williamsville	7.60	6.90
Williston	10.50	11.35	11.50	13.60
Winhall	9.00	8.30
Windsor	9.65	8.35
Winooski	10.50	10.10	10.50	10.05	11.35	11.50	13.60	10.60

Rates from Philadelphia, Pa., \$4.00 more than from New York, shown on pages 108 and 109.

Round-trip tickets on sale from June 1 to September 30, with final return limit November 1, 1903. † Continuous passage.

Round-Trip Excursion Rates to Vermont Points.

Subject to slight Changes June 1st.

TO	FROM					
	Stafford, Conn.	Stamford, Conn.	Williamtic, Conn.	Woonsocket, R. I.	Worcester, Mass.	
Alburgh.....	\$12.35	\$15.40	†\$12.35	%.....	%.....
Barre.....	10.10	13.40	†10.85	10.85	9.45
Bethel.....	7.85	11.15	8.85	8.60	7.20
Bolton.....	†10.50	13.60	†10.50	11.15	9.75
Braintree.....	11.80	9.25	7.85
Brattleboro.....	6.60	4.90	3.50
Burlington.....	†10.50	13.60	†10.50	11.15	9.75
Cambridge.....	10.60	14.70	†11.60	12.25	10.85
Cambridge Junction.....	11.85	14.95	†11.85	12.50	11.10
Colchester.....	†10.75	13.85	†10.75	11.40	10.00
East Alburgh (Alburgh Springs).....	12.25	15.40	†12.35	13.00	11.60
East Berkshire.....	12.80	15.95	†12.85	13.40	12.00
East Granville.....	12.00
East Swanton.....	†12.10	15.20	†12.10	12.75	11.35
Enosburgh Falls.....	12.55	15.70	†12.60	13.15	11.75
Essex Center.....	13.75	11.30	9.90
Essex Junction.....	†10.50	13.60	†16.50	11.15	9.75
Georgia.....	†11.25	14.35	†11.25	11.90	10.50
Green's Corners.....	15.00	12.50	11.15
Hartford.....	10.05	7.50	6.10
Hartland.....	6.20	9.50	7.20	6.95	5.55
Highgate Springs.....	12.25	15.45	†12.35	13.00	11.60
Jamaica.....	8.15	6.90	5.50
Jeffersonville.....	14.85	12.40	11.00
Jericho.....	†10.85	13.95	†10.85	11.50	10.10
Jonesville.....	13.60
Middlesex.....	13.30	10.75	9.35
Milton.....	†11.10	14.20	†11.10	11.75	10.35
Montpelier.....	9.75	13.10	†10.50	10.50	9.10
Newfane.....	7.40	6.70	4.30
Northfield.....	9.25	12.55	10.25	10.00	8.60
Northfield Falls.....	10.10	8.70
North Duxbury.....	13.60	11.15	9.75
North Enosburgh.....	15.85	13.35	11.95
North Hartland.....	9.65	7.10	5.70
North Sheldon.....	15.45	12.90	11.50
Oakland.....	14.50	12.05	10.65
Randolph.....	8.20	11.50	9.20	8.95	7.55
Richford.....	13.05	16.20	†13.10	13.65	12.25
Richmond.....	†10.60	13.60	†10.50	11.15	9.75
Roxbury.....	8.95	12.25	9.95	9.75	8.30
Royalton.....	10.90	8.35	6.95
Sharon.....	7.25	10.55	8.25	8.00	6.60
Sheldon Junction.....	12.15	15.35	†12.25	13.75	11.35
Sheldon Springs.....	12.10	15.20	†12.10	12.75	11.35
South Franklin.....	15.50
South Londonderry.....	8.75	7.05	5.65
South Royalton.....	7.50	10.80	8.50	8.25	6.85
South Vernon.....	4.40	3.00
St. Albans.....	†11.65	14.75	†11.65	12.30	10.90
Swanton.....	†12.10	15.20	†12.10	12.75	11.35
Townshend.....	7.65	5.95	4.55
Underhill.....	†11.10	14.20	†11.10	11.75	10.35
Wardsboro.....	8.00	6.30	4.90
Waterbury.....	†10.25	13.55	†10.50	11.00	9.60
West Dummerstown.....	7.05	5.45	3.95
West Hartford.....	7.00	10.30	8.00	7.75	6.35
West Swanton.....	15.40
West Townshend.....	7.95	6.25	4.85
White River Junction.....	6.60	9.90	7.60	7.35	5.95
Williamstown.....	10.50	13.80	†11.25	11.25	9.85
Williamsville.....	7.20	5.50	4.10
Williston.....	13.60	11.15	9.75
Winhall.....	8.60	6.90	5.50
Windsor.....	9.25
Winooski.....	†10.50	13.60	†10.50	11.15	9.75

Rates from Washington, D. C., \$10.00 more than rates from New York, shown on pages 108 and 109.

Round-trip tickets on sale from June 1 to September 30, with final return limit November 1, 1903. † Continuous passage.



NON-COMMISSIONED OFFICERS' LINE



ETHAN ALLEN MONUMENT



OFFICERS' LINE



MILITARY POST
FORT ETHAN ALLEN, VT.

RETURNING FROM GUARD MOUNT.

FORT ETHAN ALLEN, VT., UNITED STATES MILITARY POST.

National Life Insurance Co.

Montpelier, Vermont.

JOSEPH A. DE BOER,
President.
JAMES T. PHELPS,
Vice-President.
JAMES B. ESTEE,
2nd Vice-President.
OSMAN D. CLARK,
Secretary.
H. M. CUTLER,
Treasurer.
DR. A. B. BISBEE,
Medical Director.
C. E. MOULTON,
Actuary.
F. A. HOWLAND,
Counsel.

JANUARY 1, 1903.

Assets,	-	-	-	-	\$25,335,030.36.
Surplus,	-	-	-	-	\$2,584,763.70.
Insurance,	-	-	-	-	\$118,301,698.00.

SAFE INVESTMENTS---LARGE RETURNS.



ANNUITIES ❀ ❀ ❀

\$1,000 will buy for a man aged 60, \$97.24; at age 65, \$114.02; at age 70, \$134.31. This means a safe investment of 9.72 per cent., 11.40 per cent. and 13.43 per cent., and is the only sure way known among men by which such large yearly returns can surely be realized.

INSURANCES ❀ ❀ ❀

THE NATIONAL issues the most approved form of MUTUAL POLICIES ON LIFE, TERM, ENDOWMENT AND ANNUITY PLANS.



FOR INFORMATION ADDRESS THE

HOME OFFICE, MONTPELIER, VERMONT,

OR ONE OF THE FOLLOWING GENERAL AGENTS:

R. W. HULBURD, Hyde Park, Vt.
T. S. PECK, Burlington, Vt.
E. S. KINSLEY, Rutland, Vt.

W. W. SPRAGUE, St. Johnsbury, Vt.
H. E. TAYLOR & SON, Brattleboro, Vt.
S. S. BALLARD, Montpelier, Vt.



Franklin House
AND
Lakeside Cottage
HIGHGATE SPRINGS,
VERMONT,
ON LAKE CHAMPLAIN.

JUDSON L. SCOTT, Proprietor.



PARK VIEW COTTAGE, a first-class boarding house, under the same management as the Franklin house, and rates from \$7 to \$10 a week.

E. H. VARNEY, Manager.

LAKE HOUSE,

LARRABEE'S POINT, VT.

ROBERT L. ABEGB, PROP.



ONE of the most beautiful points on Lake Champlain. Fine view of the Adirondaeks. Old Fort Ticonderoga almost directly opposite, and Lake George close at hand. Good fishing and boating. A pleasant summer resort for families or tourists. Parties leaving Boston, via Fitchburg, at 11 a. m., reach Larrabee's at 6:35 p. m. Steamers land at hotel wharf daily. Parties from the west, via D. & H. R. R., may leave train at Addison Junction, directly across the lake. Board, \$10 and up a week. Transients, \$2 and \$2.50 per day. House open all the year. Steam heat baths and all modern improvements. Accommodation for eighty.

THE MAPLEWOOD,

RANDOLPH CENTRE, VT.



A Fine Mountain Resort,

situated in one of the oldest, also the second highest village in the State, near geographical center, 1,500 feet above sea level. Open the year around. Accommodates 35 guests. Also pleasant rooms outside of hotel for 25 guests. Situated in center of village on crest of Mount Randolph, a broad plateau, $3\frac{1}{2}$ miles from railroad station, five minutes' walk from the post-office and three churches. Two mails per day each way. Celebrated for GRANDEUR OF SCENERY, PURE AIR, SPRING WATER, HEALTHFULNESS, FINE DRIVES, WALKS, AND ENDLESS VARIETY OF WILD FLOWERS. No hay fever, malaria or mosquitoes. Table supplied with best of Jersey cream, milk, butter, fresh eggs, chickens, lamb, vegetables, etc., from adjoining farms, with seasonable fruit and berries.

J. H. COOK says: "For complete rest, and wonderful pure air, go to Randolph Centre. I know of no place in the country its equal."

Those suffering from hay fever, bronchial or throat trouble, mental strain, worry or overwork, will find this place especially adapted to their needs. Individual comfort will be carefully looked after. Very liberal reductions will be made after September 1st, also satisfactory terms for the winter. (Would wish to arrange with parties for the winter as early as September 1st, as I can only take a limited number.)

GOOD LIVERY, with safe horses for ladies. Careful drivers if wanted. For those looking for a summer home THE MAPLEWOOD offers many attractions.

Bowling Alley, Billiard Table, Tennis, Croquet and Golf Links.

House heated by hot air. Telephone connections. Eight hours' ride from New York, five and one-half from Boston, parlor car, without change.

Terms, from \$7 to \$12 per Week.

According to location of room and length of stay. For routes, fares, special rates, descriptive circulars, etc., address

THATCHER STONE, Randolph Centre, Vt.

N. B.—Hotel supplied with Underwriter's Fire Extinguishers.

A COMFORTABLE OLD INN, situated in a beautiful valley surrounded by mountains. Ten miles from the summit of Mount Mansfield, the highest peak in the Green Mountains. Beautiful walks and drives. House has all modern sanitary arrangements. Good livery. Electric cars to and from Waterbury, Vt., on Central Vermont Railway, connecting with all day trains.

The Green Mountain Inn,

M. C. LOVEJOY, PROP.,

STOWE, VERMONT.

Terms, \$2.00 per day. \$7.00 to \$10.00 per week. Ask for circulars.

TAKE A REST AT THE INN BEFORE ASCENDING THE MOUNTAIN.



SUMMIT HOUSE
ON TOP OF OLD
MT. MANSFIELD STOWE, VT.

OPEN June 15 to October 1st. Electric cars connect with trains at Waterbury, Vt., on C. V. Ry., for Stowe, where stages can be taken direct to hotel. Stages also connect with trains on the St. J. & L. C. R. R. at Morrisville, Vt. Capacity of house, 25 rooms. Rates, \$2.00 per day. Write for circulars.

W. M. ADAMS, Proprietor, Stowe, Vt.

THE Mount Mansfield Electric Railroad

IS THE SCENIC ROUTE TO
Mount Mansfield, Smugglers' Notch, and other Famous Resorts.

Cars connect with all trains at Waterbury, Vt.

For excursion rates, address : : : : : :

MOUNT MANSFIELD ELECTRIC RAILROAD COMPANY, STOWE, VERMONT.

THE SAFETY CAR HEATING and LIGHTING CO.

160 Broadway, NEW YORK.

PINTSCH SYSTEM of Car Lighting.

CAR HEATING by steam jacket hot water circulation and direct steam with return and single train pipe.

AUTOMATIC STEAM COUPLERS.



VIEW OF HOTEL RAINBOW FALLS AT HEAD OF AUSABLE CHASM.

The Hotel and Chasm, comprising 400 acres, are under the same management. The Chasm, nearly two miles long, is accessible its entire length by walks and boats. HOTEL AU SABLE CHASM is new and modern in all appointments, with elevator, electricity, steam, open fire-places, etc., and the cuisine of the highest excellence. Golf. For circulars, diagrams and terms, address

CHAS. W. BICKFORD, General Manager, Ausable Chasm, N. Y.



THE
Hartford Inn,

F. C. JOHNSON, Prop., HARTFORD, VT.

MODERN HOTEL, situated on bluff overlooking the White River Valley. All up-to-date improvements; broad verandas, lawns, hammocks, etc.; good table a specialty; accommodate seventy-five. Terms, \$7 to \$12 per week.

Transients, \$8 per day. Free automobile meets all trains at White River Junction.

Stevens' House, Vergennes,
Vermont.



ON the line of the Rutland Railroad, forty-six miles north of Rutland, twenty-one south of Burlington, at the head of navigation on Otter Creek. Busses meet all trains and boat which run daily between here and Westport, N. Y., leaving here Sundays excepted, at 8 o'clock a. m. Leave Westport upon arrival of steamer "Vermont," about 3:30 p. m., thus affording a pleasant stopping place for tourists to or from Elizabethtown, Keene Valley or the Adirondacks. Write for circulars.

S. S. GAINES, Proprietor.

ADDISON HOUSE

MIDDLEBURY, VERMONT.

THIS popular hotel is nicely situated in one of the most beautiful villages of the Green Mountains. It is surrounded by parks, and commands a view of the entire village. It is on direct line of railroad between New York and Montreal. Has recently been enlarged by the addition of thirty-five airy sleeping rooms, elegantly furnished; heated by steam; electric lights; rooms with bath and every modern attachment; broad piazzas, commanding a fine view of mountain scenery. Telephone and telegraph office in hotel. Descriptive pamphlet sent on application.

JOHN HIGGINS, Proprietor.

**MAPLE GROVE FARM
FOR SALE!**

PRODUCTIVE FARM of about 150 acres, near school and within twenty minutes' drive from station. High and healthy location commanding extensive view of Green Mountains. Brick house with large rooms; large lawn completely surrounded by shade trees. New barn with modern improvements. Buildings painted last year. Everything in first-class condition. Pure spring water. Trout brook runs by the house. Good hunting. Fine maple sugar grove on the place; also pear, apple and grape orchards. Will sell stock and farming implements. Situated near Quechee Gulf and the Woodstock Inn. Failing health cause of change. Will sell less than cost. An ideal place for a summer home. Post-office address Quechee, Vt. Write for particulars. A bargain for the right party.

F. L. BENSON, QUECHEE, VT.

Van Ness House...

U. A. WOODBURY, PROP.
H. E. WOODBURY, MANG'R.
T. H. BROWN, CLERK.

HAVE YOU SEEN BEAUTIFUL
Burlington, Vt.

ON LAKE CHAMPLAIN?

~DON'T MISS IT!~

THE VAN NESS HOUSE is the largest hotel in the State, and is first-class. The public rooms have been entirely refinished and refurnished, and are not equalled by any outside the larger cities. Electric lights and an elevator. There is not an inside bedroom in the house, and nearly all these afford a fine view of Lake Champlain and the Adirondack Mountains. The basement, kitchen, etc., are provided with Automatic Sprinklers. Water from an Artesian well, 360 feet deep. The only hotel in Burlington with verandas, and the only building used exclusively for hotel purposes. Rooms en-suite with bath.

Via Burlington is the pleasantest route to and from the White and Adirondack Mountains, Lake Champlain, Lake George and Saratoga. Free bus. Write for circulars.

Depot Cafe and Dining Room, A. H. AUSTIN PROP., ST. ALBANS, VT.

IMPORTED AND DOMESTIC CIGARS, CAKES,
CONFECTIONS, ICES, FRUITS AND SALADS.

Catering to private parties a specialty. Facilities for taking care of one hundred people. Service prompt and courteous. On direct line between Montreal and Boston or New York.

ONE OF THE MOST UP-TO-DATE RAILROAD RESTAURANTS IN NEW ENGLAND.

Bascom House,

J. M. TOWSEND, Prop.,

BETHEL, VERMONT.

TERMS \$7.00 to \$10.00 per week. Steam heat, electric lights, large shaded veranda. First-class livery, telephone. Accommodates 50 guests.

House situated on side of mountain in the beautiful village of Bethel, Vt., on Central Vermont R'y.

Hotel supplied with cream, milk, eggs and vegetables, fruits, strawberries from our own adjoining farm. Good boating. Pure Cold Spring Water from the mountain.

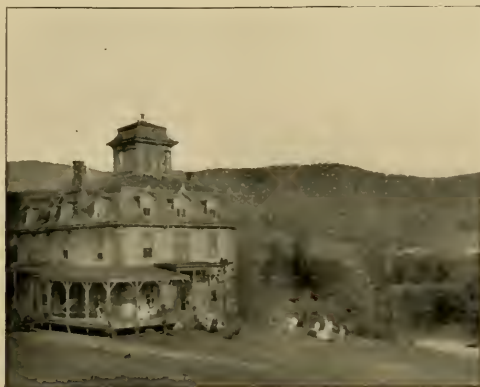


The Original Hotel Champlain, Maquam Bay, Swanton, Vt., on Lake Champlain, C. F. Smith & Son, Props.
 19th SEASON.



ON the east shore of Lake Champlain. The home of Small Mouth Black Bass. Rates, \$2.50 per day; \$10 to \$15 per week. This house is modern in appointments; gas, electric bells, bath rooms and telephone connections; the sanitary equipment is perfect; best Bass fishing on the lake; tennis court, fine drives and a good livery; plenty of milk, cream, fresh eggs and vegetables; it is the half-way house between Old Orchard, the White Mountains and the Adirondack region; a new steamer plies between Maquam and Burlington, connecting at Plattsburg with the D. & H.; and Central Vermont train from Boston and New York connect at Swanton. Open from June 1st to October 6th. Send for circular, which gives view of surroundings, also interior of hotel; fine roads for bicycles; bath houses on shore; and a shuffle table; bowling alley. The house has been repaired and refurnished this season.

Pleasant View House, O. S. SMITH, PROPRIETOR, **Moscow, Vt.**

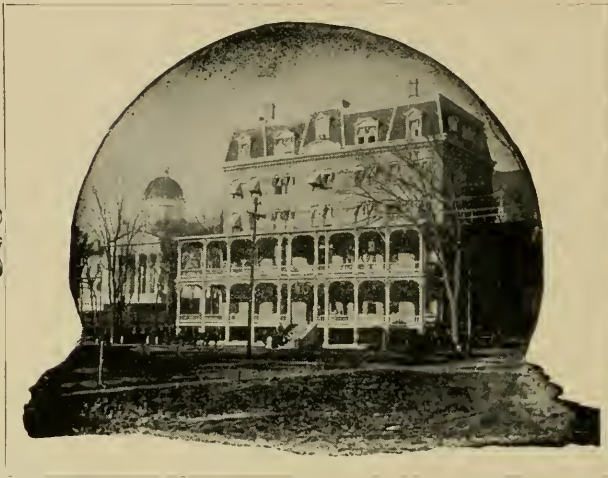


Railroad Station, Waterbury, Vt., eight miles distant; electric railroad connects with all trains at Waterbury; house five minutes' walk from electrics, ten miles from the summit of Mt. Mansfield; our house is a modern three-story, and a fine observatory from which the views of Mansfield, Hog Back and Elmore mountains are unsurpassed; fine large rooms, all ceilings high; 680 feet of veranda, bath, hot and cold water, best sanitary plumbing; pure and unending spring water. The beautiful Waterbury river flows by the house; its valleys, hills, drives, streams and climate are unsurpassed; house two miles from Stowe Village. Home cooking; best of everything raised on farm. Post-office across the road; mail thrice daily. Price, adults \$6 to \$10 per week; for children apply.

Special rates for June and September; we also have comfortable cottages with eight rooms at Lake Mansfield. Elevation, 2,000 feet, for accommodation of guests.

The Pavilion., Montpelier, Vermont.

J. S. VILES, PROPRIETOR.



MONTPELIER occupies a dimple among the hills and is nestled in one of the most charming valleys of the Green Mountains, midway between the White Mountains and the Adirondacks.

THE PAVILION overlooks Capital Park, upon which are located the State Buildings, commanding the most beautiful portion of the town, and is unexcelled by any hotel in Vermont. All modern improvements and out-door sports. Write for terms and booklet.

The American House,

M. F. SPENCER, Proprietor, ST. ALBANS, VERMONT.

THE AMERICAN HOUSE recently opened under new management. Newly furnished and remodelled throughout. First-class in every particular. Excellent accommodations for summer guests. New rooms. Best sanitary conditions. Good table a specialty. Prompt attendance. Everything done for the comfort of guests. Situated corner Main and Lake Streets, facing the Park. Near station and post-office. Free bus to and from station to meet trains. Electric cars pass in front of the door, and leave every hour for St. Albans Bay and Rocky Point on Lake Champlain, two and one-half miles distant; excellent place for camping, fishing and boating; row-boats, sail-boats and canoes rented at St. Albans Bay, also small steamers for excursion parties; steamers from Burlington and Plattsburg land at St. Albans Bay dock daily, except Sunday. Livery near by. Accommodate 100. Terms, \$2.00, \$2.50 and \$3.00 per day. Write for circulars.

Samson's Lake View House....

FISHING, HEALTH and FAMILY RESORT.

ST. ALBANS, VT.

ON THE GREAT BACK BAY OF LAKE CHAMPLAIN.



THE season begins June 1st and closes October 1st, and each month has its occupation and its charm. To have any question answered, or to make detailed arrangements for a visit to this ideal family resort, address

W. J. SAMSON, Manager,
Lake View House, Franklin Co., Vt.

POST-OFFICE AND TELEPHONE IN THE HOUSE.



**The
Woodstock Inn,**

ARTHUR B. WILDER,
Manager,

WOODSTOCK, VT.

Open summer and winter. Country Club Golf Links near. Fine drives.

For terms and plans, address the Manager.

Woodstock Railway



**Picturesque Route to
Woodstock, Vermont.**

J. G. PORTER, GENERAL MANAGER.

Connects at White River Junction with Central Vermont Railway and Boston and Maine System.

JUNCTION HOUSE,

WHITE RIVER JUNCTION, VT.

SIX miles from the wonderful Quechee Gulf, and on direct line between New York, Boston and White Mountains and Montreal.

Recently rebuilt. Modern in all its appointments. Good livery connected. Write for terms and circulars.

GIBBS & WHEELER, Proprietors.

Depot Cafe, **WHITE RIVER JUNCTION, VERMONT.**

Cuisine unexcelled. Service prompt and courteous. Facilities for taking care of two hundred people. Special attention to large parties and summer tourists.

THE FINEST RAILROAD RESTAURANT IN NEW ENGLAND.

"A SUMMER PARADISE."



Just issued by the Delaware & Hudson Company is an Illustrated Directory of Summer Hotels, Boarding Houses and Resorts in the cool country along the Eastern Slope of the Adirondacks, Sharon Springs and other resorts of the Empire State. It also contains information of interest to tourists who should plan their trips to include

Lake Champlain. Ausable
Chasm, Lake George and
Saratoga Springs.

a trip incomparable in America for beauty and historic interest. Free by mail on receipt of four cents postage.



J. W. BURDICK,
General Passenger Agent,
ALBANY, N. Y.

Champlain Transportation Co.

AND

Lake George Steamboat Co.

Lake Champlain and Lake George



“THE GATEWAY OF THE COUNTRY.”

THIS ROUTE OFFERS ATTRACTIONS TO THE PLEASURE
SEEKERS UNSURPASSED BY THOSE OF ANY LINE OF
SUMMER TRAVEL.

The “main travelled road” to all the Northern Summer Resorts, Adirondacks, White and Green Mountains, Lakes and Sea Coast, Montreal, Hotel Champlain, Ausable Chasm, Saratoga, Troy, Albany and New York.

TWO NEW STEEL STEAMERS IN COMMISSION FOR 1903, the
“VERMONT” on LAKE CHAMPLAIN and “SAGAMORE” on
LAKE GEORGE, handsomely equipped vessels, unsurpassed in elegance
and modern appointments by any vessel on inland waters; these Steamers
will be in commission June 1st and will form a through DAY LINE be-
tween Caldwell and Plattsburg in either direction, touching at all im-
portant landings.

MEALS SERVED ON STEAMERS ON THE AMERICAN PLAN.

THE morning train from Montreal has no boat connection through Lake Champlain.
Take afternoon train and lodge on board Steamer “Vermont” at Plattsburg. State-
rooms on the steamer, accommodating two persons, at reasonable rates. The staterooms
may be retained the following day until the end of the Lake Champlain journey at Fort
Ticonderoga, without additional charge. Reservations can be secured by wire or
letter, and boat porters will meet evening trains at Plattsburg.

For time-tables, illustrated guide book and other information, send four cents for
postage to

GEORGE RUSHLOW, General Manager.

Burlington, Vt., May, 1903.

PAUL SMITH'S 

HOTEL and COTTAGES.

OPEN JUNE 15TH

GOLF AND ALL OUT-DOOR SPORTS.

THE largest hotel in the Adirondacks. Three and one-half miles from Paul Smith's station, over a macadamized road. On Adirondack Division N. Y. C. Railroad. Six-horse Tally-Ho Coaches meet all trains. Circulars of Fred H. Schofield, Metropolitan Building, Madison Square, New York.

PAUL SMITH'S HOTEL CO., PROPRIETORS.


Telegraph and Post-office address, Paul Smith's N. Y.

Adirondack Mountains. **RIVERSIDE INN,** Overlooking Lake Flower.

SARANAC LAKE, N. Y.

Open year around. Modern in all its appointments. Thirty rooms with private bath. Excellent cuisine and service. Write for circulars.

PINE & CORBETT, Proprietors.


The
Algonquin

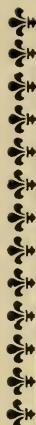
On Lower Saranac Lake,
Adirondack Mountains.

Famed for beauty of environment and excellence of Cuisine.

Golf, etc.

For booklet, address

JOHN HARDING, Algonquin, N. Y.


**Hudson
River
by
Daylight**
 The most charming
Inland Water Trip on
the Continent.

"NEW YORK" and "ALBANY" the Palace Iron Steamers
 of the HUDSON RIVER DAY LINE.



DAILY except Sunday, from Brooklyn, by Annex,
 8:00 a. m.; New York, Debosses Street Pier, 8:40
 a. m.; New York, Twenty-second Street Pier, N. R.,
 9:30 a. m.; New York, West 120th Street, 9:20 a. m.;
 Albany, foot of Hamilton Street, 8:30 a. m.

THE ATTRACTIVE to the resorts of the Catskills, Saratoga and the Adiron-
TOURIST ROUTE... dacks, Hotel Champlain and Montreal, Niagara Falls and
 the West. Through tickets sold to points reached via the
 Central Vermont Railway, and baggage checked to desti-
 nation. Send six cents for copy of Summer Excursion Book. A trip on one of these
 famous steamers, on the noblest stream in the country, offers rare attractions. They
 are fitted up in the most elegant style, exclusively for passengers. Their great speed,
 fine orchestra, spacious saloons, private parlors and luxurious accommodations; in
 every respect, render them unexcelled.

E. E. OLCOTT, Gen'l Manager.

F. B. HIBBARD, Gen'l Pass. Agent.

Debosses Street Pier, New York.



THE PALISADES OF THE HUDSON.

5 NEW PUBLICATIONS

INTERCOLONIAL "Fishing and Hunting."

INTERCOLONIAL "Tours to Summer Haunts."

INTERCOLONIAL "Maritime Express."

INTERCOLONIAL "Salmon Fishing."

Via the For
INTERCOLONIAL "A Week in the Woods."

Write to the General Passenger Department, Moncton, N. B., for free copies of the above.

PARK AVENUE HOTEL.



ABSOLUTELY
FIRE PROOF.

Park Avenue (4th Ave.,) 32nd to 33rd
Streets,

New York.

THREE HUNDRED thousand dollars has been recently expended in alterations and improvements. New plumbing and newly furnished throughout. The hotel fronts on three streets,

Park Avenue, Thirty-second and Thirty-third Streets, and contain five hundred beautifully appointed light rooms, while the cuisine and service are of the highest grade. The rates charged are quite moderate. The hotel is conducted on both the American and European plans. Only five minutes from all the large retail department stores and theatres. Electric cars passing the door transfer to all cross-town lines.

REED & BARNETT, PROPRIETORS.



Thirty-Seventh Season

Saranac Inn

In the Adirondacks

One of the most select and best known hotels in the mountains, beautifully situated at the head of Upper Saranac Lake. A home-like resort, with accommodation for two hundred and fifty people. A new addition with baths, fire places, etc. Spacious lawns, golf links, boating, fishing, etc., etc.

Saranac Inn is two miles from Saranac Inn Station, on the Adirondack Division of the N. Y. C. & H. R. R. R. Through tickets and baggage checked to the "Inn." Concord coaches meet all passenger trains, and a line of steamboats connect at Saranac Inn for Hotel Wawbeek, Rustic Lodge, Hiawatha House and Saranac Club.

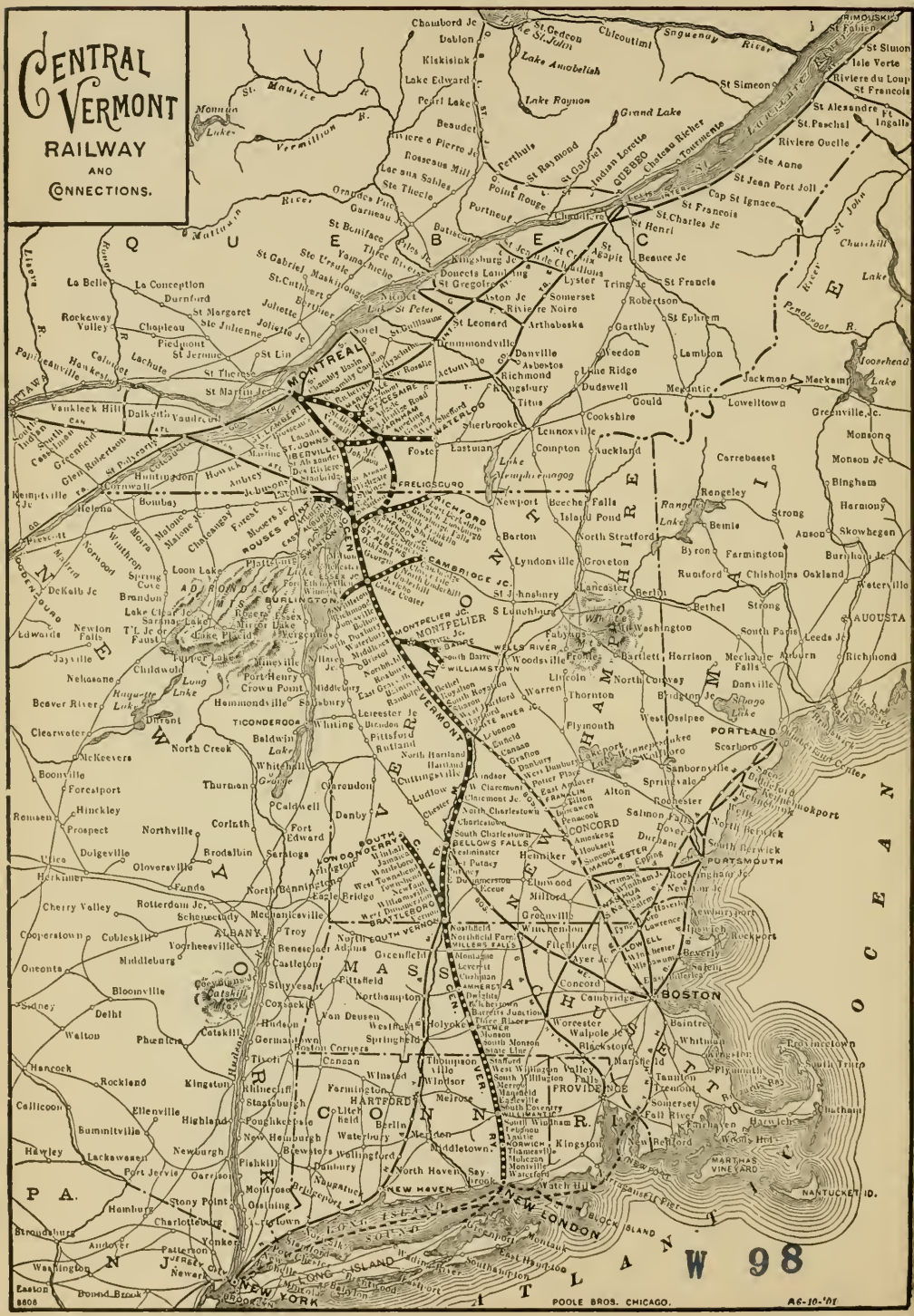
FOR FURTHER INFORMATION APPLY TO

M. B. MARSHALL, MANAGER.

P. O. AND TELEGRAPH ADDRESS, SARANAC INN, FRANKLIN COUNTY, N. Y.



CENTRAL VERMONT RAILWAY AND CONNECTIONS.

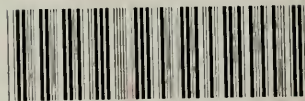






WEST
BOOKBINDING
Grantville, Pa.
JULY - AUG 1989
The Quaker Bound

LIBRARY OF CONGRESS



0 013 787 205 5