

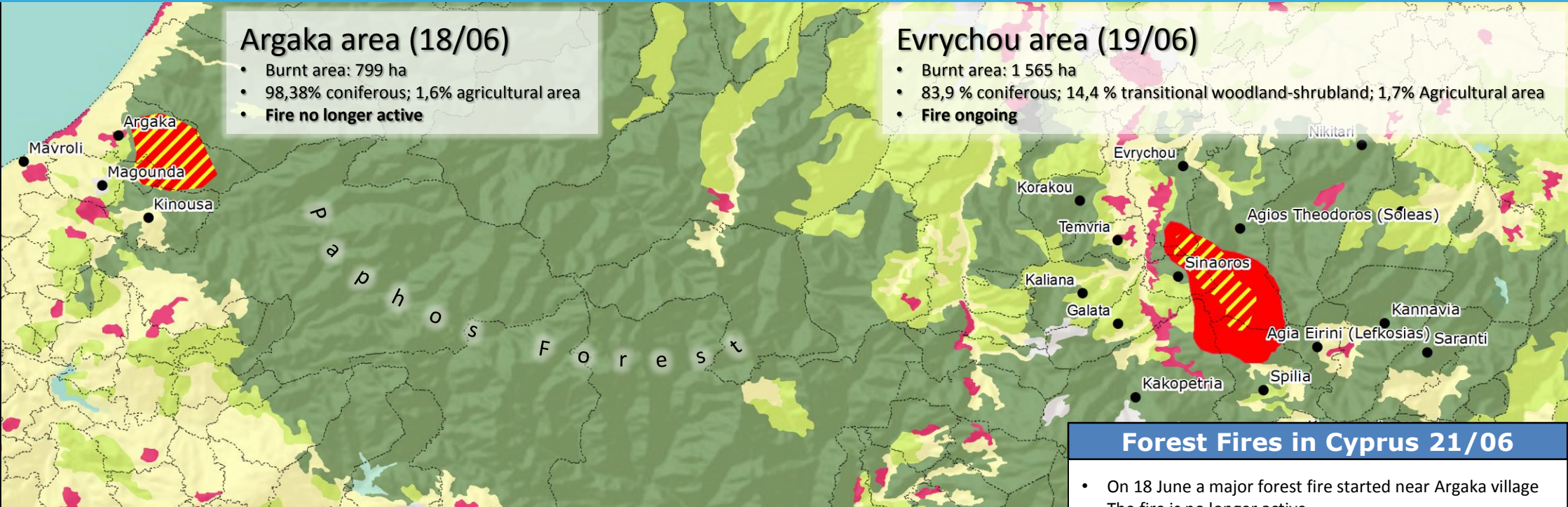
Forest Fire | Cyprus

**Argaka area (18/06)**

- Burnt area: 799 ha
- 98,38% coniferous; 1,6% agricultural area
- **Fire no longer active**

**Evrychou area (19/06)**

- Burnt area: 1 565 ha
- 83,9 % coniferous; 14,4 % transitional woodland-shrubland; 1,7% Agricultural area
- **Fire ongoing**



**Forest Fires in Cyprus 21/06**

- On 18 June a major forest fire started near Argaka village. The fire is no longer active.
- On 19 June another major forest fire has occurred in Evrychou area. More than 1 500 ha of forest and mixed vegetation have been burnt so far.
- On 20 June, Cyprus activated the Union Civil protection Mechanism (UCPM) requesting aerial firefighting means, air tractors (for the use with fire retardant) and flame retardant substances.
- As an immediate response, Greece deployed one aerial firefighting module using planes (two airplanes) and one aerial firefighting module of two helicopters. The ERCC has activated the aerial firefighting means registered in the European Emergency Response Capacity (Voluntary Pool). Two firefighting airplanes and one reconnaissance/coordination aircraft from France and one firefighting plane (forest firefighting buffer capacity) from Italy were mobilised.
- The Italian plane has landed in Cyprus at 12.28 UTC, 21 June and the French firefighting module is expected to land at 16.00 UTC, 21 June.
- British helicopters are also supporting the overall firefighting efforts. Bilaterally Israel, deployed four forest firefighting airplanes and provided fire retardant material.

**Legend**

- ★ Provincial capital
- Commune affected by forest fire
- ✈ Airport
- ▭ Commune boundary
- ▨ forest fire area (20/06)
- ▨ forest fire area (21/06)
- Corine Land Cover**
- ▨ Urban and industrial area
- ▨ Agricultural area
- ▨ Forest area
- ▨ Grasslands and shrub area
- ▨ Sparsely vegetated areas
- ▨ Burnt areas
- ▨ Water areas

