







Handwritten text in Tamil script on a palm leaf manuscript. The text is arranged in approximately three horizontal lines. The script is dense and characteristic of traditional South Indian manuscripts. A small circular hole is visible on the left side of the leaf, used for threading a cord to bind multiple leaves together.

Handwritten text in Tamil script on a palm leaf manuscript. The text is arranged in approximately three horizontal lines. The script is dense and characteristic of traditional South Indian manuscripts. A small circular hole is visible on the left side of the leaf, used for threading a cord to bind multiple leaves together.

Handwritten text in Tamil script on a palm leaf manuscript. The text is densely packed and appears to be a historical or religious record. A prominent dark circular hole is visible in the middle of the leaf, which is a traditional feature used for threading a cord to bind multiple leaves together. The script is written in a cursive style characteristic of traditional Tamil manuscripts.

Handwritten text in Tamil script on a palm leaf manuscript, continuing from the previous leaf. The text is densely packed and appears to be a historical or religious record. The script is written in a cursive style characteristic of traditional Tamil manuscripts.

Handwritten text in Tamil script on a palm leaf manuscript. The text is densely packed and appears to be a continuous passage. There are some dark spots and a small hole on the leaf, likely due to age or insect damage. The script is a traditional form of Tamil used in manuscripts.

Handwritten text in Tamil script on a palm leaf manuscript, continuing from the previous leaf. The text is densely packed and appears to be a continuous passage. There are some dark spots and a small hole on the leaf, likely due to age or insect damage. The script is a traditional form of Tamil used in manuscripts.

Handwritten text in Tamil script on a palm leaf manuscript. The text is densely packed and appears to be a continuous passage. A small circular hole is visible on the left side of the leaf, likely from a binding process. The script is written in a traditional style with clear letterforms.

Handwritten text in Tamil script on a palm leaf manuscript, continuing from the previous section. The text is densely packed and appears to be a continuous passage. The script is consistent with the first section, showing a traditional style of writing.

Handwritten text in Tamil script on a palm leaf manuscript. The text is densely packed and appears to be a continuous passage. There is a small circular hole on the left side of the leaf, which is a traditional feature for threading a cord to bind multiple leaves together. The script is in an older form of the Tamil language, with some characters that are less common in modern usage. The leaf shows signs of age, including some discoloration and wear.

Handwritten text in Tamil script on a palm leaf manuscript, continuing from the previous leaf. The text is densely packed and appears to be a continuous passage. There is a small circular hole on the left side of the leaf, which is a traditional feature for threading a cord to bind multiple leaves together. The script is in an older form of the Tamil language, with some characters that are less common in modern usage. The leaf shows signs of age, including some discoloration and wear.



Handwritten text in Tamil script on a palm leaf manuscript. The text is densely packed and appears to be a continuous passage. There is a small circular hole on the left side of the leaf, which is a traditional feature for threading a cord to bind multiple leaves together. The script is in an older form of the Tamil language.

Handwritten text in Tamil script on a palm leaf manuscript, continuing from the previous leaf. The text is densely packed and appears to be a continuous passage. There is a small circular hole on the left side of the leaf, which is a traditional feature for threading a cord to bind multiple leaves together. The script is in an older form of the Tamil language.

Handwritten text in Tamil script on a palm leaf manuscript. The text is densely packed and appears to be a continuous passage. A small circular hole is visible on the left side of the leaf, used for binding multiple leaves together.

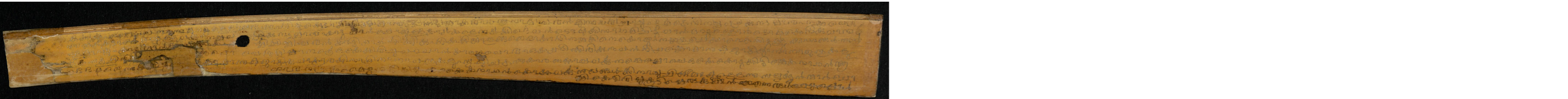
Handwritten text in Tamil script on a palm leaf manuscript. The text is densely packed and appears to be a continuous passage.

Handwritten text in Tamil script on a palm leaf. The text is densely packed and appears to be a historical or religious record. It includes several lines of script, with some characters appearing to be in a different script or dialect. The leaf shows signs of age and wear, with some discoloration and a small hole near the center.

Handwritten text in Tamil script on a palm leaf. The text is densely packed and appears to be a historical or religious record. It includes several lines of script, with some characters appearing to be in a different script or dialect. The leaf shows signs of age and wear, with some discoloration and a small hole near the center.

Handwritten text in Tamil script on a palm leaf, likely a historical record or legal document. The text is densely packed and spans the length of the leaf. It appears to be a single line of text written in a cursive style. The leaf shows signs of age and wear, with some discoloration and a small dark spot near the center.

Handwritten text in Tamil script on a palm leaf, likely a historical record or legal document. The text is densely packed and spans the length of the leaf. It appears to be a single line of text written in a cursive style. The leaf shows signs of age and wear, with some discoloration and a small dark spot near the center.



Handwritten text in an ancient script, likely Tamil, inscribed on a palm-leaf manuscript strip. The text is arranged in several lines across the length of the leaf. The script is finely etched into the surface of the dried leaf. There is a small circular hole on the left side of the strip, which was traditionally used for threading a cord to bind multiple leaves together into a book format. The text appears to be a continuous passage, possibly a religious or philosophical treatise, given the nature of such manuscripts.

Handwritten Tamil script on a palm leaf manuscript. The text is arranged in approximately 10 horizontal lines across the length of the leaf. The script is finely etched into the surface of the dried leaf. There is a small circular hole on the left side, which is a traditional feature for threading a cord to bind multiple leaves together into a book format. The leaf shows signs of age, including some staining and wear at the edges.

Handwritten Tamil script on a palm leaf manuscript, continuing from the previous leaf. The text is arranged in approximately 10 horizontal lines. The script is consistent with the first leaf, showing a continuous flow of text. Like the first leaf, it has a small circular hole on the left side for binding. The leaf is well-preserved and clearly legible.

Handwritten Tamil script on a palm leaf, likely a historical record or legal document. The text is densely packed and spans the entire length of the leaf. A small circular hole is visible near the left end, used for threading a cord to bind multiple leaves together. The script is written in a traditional style, with clear characters and some larger characters that may indicate specific names or titles. The leaf shows signs of age, with some discoloration and wear.

Handwritten Tamil script on a palm leaf, continuing the text from the first leaf. The script is consistent in style and density. The leaf is also aged and shows some wear. The text appears to be a continuation of the historical or legal record from the first leaf.

Handwritten text in a South Indian script, likely Grantha or Tamil, on a palm leaf. The text is arranged in approximately four horizontal lines. The script is finely etched into the surface of the leaf. There is a small dark circular mark on the left side of the leaf, possibly a hole or a stain. The leaf shows signs of age and wear, with some discoloration and a slightly uneven texture.

Handwritten text in a South Indian script, likely Grantha or Tamil, on a palm leaf. The text is arranged in approximately four horizontal lines. The script is finely etched into the surface of the leaf. There is a small dark circular mark on the left side of the leaf, possibly a hole or a stain. The leaf shows signs of age and wear, with some discoloration and a slightly uneven texture.



Handwritten text in Tamil script on a palm leaf manuscript. The text is arranged in approximately 10 horizontal lines. A small circular hole is visible on the left side of the leaf, used for binding multiple leaves together. The script is finely etched into the surface of the dried leaf.

Handwritten text in Tamil script on a palm leaf manuscript, continuing from the previous leaf. The text is arranged in approximately 10 horizontal lines. The script is finely etched into the surface of the dried leaf.





Handwritten text in Tamil script, likely a historical record or legal document. The text is densely packed and spans the width of the left page. It appears to be a continuous narrative or list of events, with some lines starting with 'அவ்வாறு' (Thus) and 'அவ்வாறு' (Thus). The script is in an older form of the Tamil language.

Handwritten text in Tamil script, continuing from the left page. The text is densely packed and spans the width of the right page. It appears to be a continuous narrative or list of events, with some lines starting with 'அவ்வாறு' (Thus) and 'அவ்வாறு' (Thus). The script is in an older form of the Tamil language.



Handwritten text in Tamil script on a palm leaf manuscript. The text is densely packed and appears to be a continuous passage. There is a small circular hole or mark in the middle of the leaf.

Handwritten text in Tamil script on a palm leaf manuscript, continuing from the previous leaf. The text is densely packed and appears to be a continuous passage.



Handwritten text in Tamil script on a palm leaf manuscript. The text is densely packed and appears to be a historical or religious record. It begins with a date: 'சீர்திருவிடைமருதூர் 1785' (Siertiruvaidamardur 1785). The script is in an older form of the Tamil language. The text is written in a single line across the length of the leaf, with some characters appearing to be in a different script or dialect, possibly indicating a specific regional or religious context. The leaf shows signs of age, including some discoloration and wear.

Handwritten text in Tamil script on a palm leaf manuscript, continuing from the previous leaf. The text is densely packed and appears to be a historical or religious record. It begins with a date: 'சீர்திருவிடைமருதூர் 1785' (Siertiruvaidamardur 1785). The script is in an older form of the Tamil language. The text is written in a single line across the length of the leaf, with some characters appearing to be in a different script or dialect, possibly indicating a specific regional or religious context. The leaf shows signs of age, including some discoloration and wear.





Handwritten text in Tamil script on a palm leaf manuscript. The text is densely packed and covers most of the leaf's surface. There is a small circular hole or mark near the center of the leaf.

Handwritten text in Tamil script on a palm leaf manuscript, continuing from the first leaf. The text is densely packed and covers most of the leaf's surface.

20

Handwritten text in Tamil script on a palm leaf manuscript. The text is densely packed and covers most of the leaf's surface. A circular hole is visible on the left side of the leaf.

Handwritten text in Tamil script on a palm leaf manuscript. The text is densely packed and covers most of the leaf's surface.

Handwritten text in Tamil script on a palm leaf manuscript. The text is densely packed and appears to be a continuous passage. A small circular hole is visible on the left side of the leaf, likely for binding.

Handwritten text in Tamil script on a palm leaf manuscript. The text is densely packed and appears to be a continuous passage.

Handwritten text in Tamil script on a palm leaf manuscript. The text is arranged in approximately four horizontal lines. The script is finely etched into the surface of the leaf. There are several irregular holes and tears in the leaf, particularly along the top and bottom edges, which are characteristic of traditional palm leaf manuscripts. A small, circular hole is visible on the left side of the leaf, likely used for threading a cord to bind multiple leaves together.

Handwritten text in Tamil script, partially obscured by a large tear and a circular hole on the left side. The text is arranged in several lines across the length of the palm leaf.

Handwritten text in Tamil script, located on the right side of the palm leaf, continuing the text from the left side.

Handwritten text in Tamil script on a palm leaf manuscript. The text is arranged in approximately 10 horizontal lines. The script is dense and appears to be a form of classical or historical Tamil. There is a small dark circular mark or hole on the left side of the leaf, about one-third of the way down. The leaf shows signs of age, with some discoloration and wear at the edges.

Handwritten text in Tamil script on a palm leaf manuscript, continuing from the previous leaf. The text is arranged in approximately 10 horizontal lines. The script is consistent with the first leaf. The leaf is slightly curved and shows signs of age and wear.

Handwritten Tamil script on a palm leaf, consisting of approximately 12 lines of text.

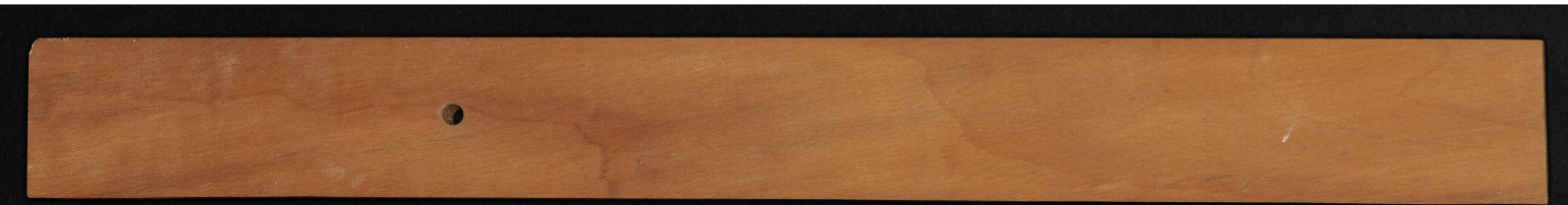
Ms. B. 11

Narasimha, Senovana

1662

Handwritten Tamil script on a palm leaf, consisting of approximately 12 lines of text.







Em B. 11

Handwritten Tamil script on a palm leaf manuscript strip. The text is densely packed and spans the length of the leaf. A small circular hole is visible on the left side of the leaf.

