

Historic, archived document

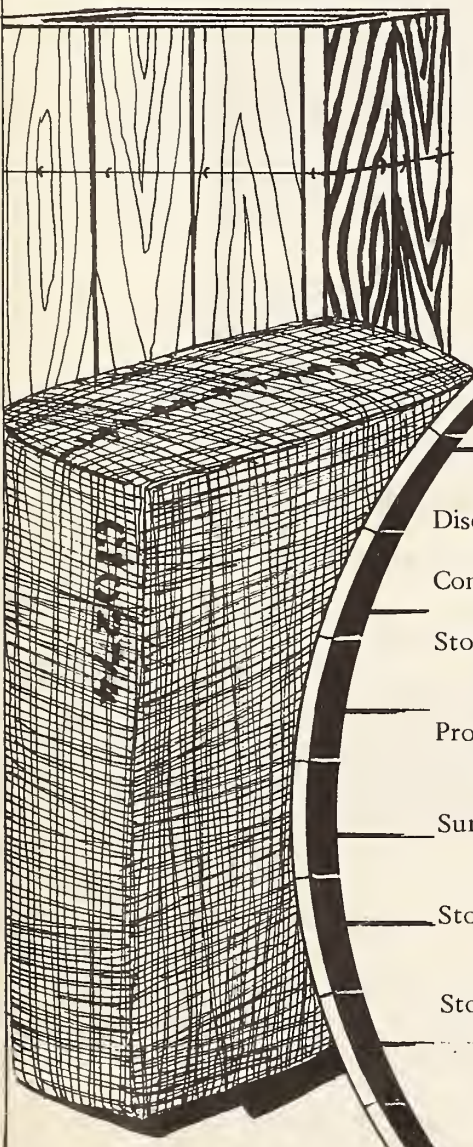
Do not assume content reflects current scientific knowledge, policies, or practices.

1.9
Ec 714

U.S. DEPT. OF AGRICULTURE
CURRENT SERIAL RECORDS
OCT. 11 1974

TOBACCO STOCKS

JULY 1974



CONTENTS

| | |
|--|---|
| Discussion | 3 |
| Conversion factors for adjusting for losses in weight | 4 |
| Stocks of leaf tobacco, by types, converted to a FARM-SALES-WEIGHT equivalent | 5 |
| Production, stocks, supply, disappearance, and price of specified types (FARM-SALES-WEIGHT) | 6 |
| Summary of tobacco leaf represented in inventories of tobacco sheet | 7 |
| Stocks of leaf tobacco, by types, showing separately quantities owned by dealers and manufacturers | 8 |
| Stocks of leaf tobacco, summary by types | 9 |

BRIEF CLASSIFICATION OF LEAF TOBACCO

(Covering classes and types)

CLASS 1, FLUE-CURED TYPES

- Type 11: Old Belt flue-cured; produced principally in the Piedmont sections of Virginia and North Carolina.
- Type 12: Eastern North Carolina flue-cured; produced principally in the coastal sections of North Carolina, north of the South River.
- Type 13: South Carolina flue-cured; produced principally in the coastal sections of South Carolina, the southeastern counties of North Carolina, south of the South River.
- Type 14: Georgia and Florida flue-cured; produced principally in southern Georgia and northern Florida.

CLASS 2, FIRE-CURED TYPES

- Type 21: Virginia fire-cured; produced in the Piedmont and mountain sections of Virginia.
- Type 22: Tennessee-Kentucky fire-cured, eastern district, Clarksville, Springfield, and Hopkinsville; produced principally in a section east of the Tennessee River, in southern Kentucky and northern Tennessee.
- Type 23: Kentucky-Tennessee fire-cured, western district, Mayfield, and Murray; produced principally in a section between the Tennessee, Ohio, and Mississippi rivers in western Kentucky and northwestern Tennessee.

CLASS 3, AIR-CURED TYPES

LIGHT AIR-CURED (CLASS 3a)

- Type 31: Burley; produced principally in Kentucky, Tennessee, Ohio, Indiana, West Virginia, Virginia, North Carolina, and Missouri.
- Type 32: Southern Maryland; produced principally in five counties of southern Maryland--Prince Georges, Anne Arundel, Calvert, Charles, and St. Marys.

DARK AIR-CURED (CLASS 3b)

- Type 35: One Sucker; produced in north-central Tennessee and south-central Kentucky.
- Type 36: Green River; produced in the northern part of Kentucky in the territory adjacent to Owensboro and Henderson.
- Type 37: Virginia sun-cured; produced principally in central Virginia, north of the James River.

CLASS 4, CIGAR-FILLER TYPES

- Type 41: Pennsylvania Seedleaf; produced principally in Lancaster County, Pa., and the adjoining counties.
- Type 42-44: Ohio filler; produced principally in the Miami Valley section of Ohio and extending into Indiana.
- Type 46: Puerto Rican sun-grown, including primed (Deshojado) and stalk-cut (Mata); produced on the Island of Puerto Rico

CLASS 5, CIGAR-BINDER TYPES

- Type 51: Connecticut Broadleaf; produced in the Connecticut Valley sections of Connecticut and Massachusetts.
- Type 52: Connecticut Havana Seed; produced in the Connecticut and Housatonic Valley sections of Connecticut and Massachusetts.
- Type 53: New York and Pennsylvania Havana Seed; produced in the Big Flats and Onondaga sections of New York, and extending into Pennsylvania.
- Type 54: Southern Wisconsin; produced in Wisconsin, south and east of the Wisconsin River.
- Type 55: Northern Wisconsin; produced in Wisconsin, north and west of the Wisconsin River, and in eastern Minnesota.

CLASS 6, CIGAR-WRAPPER TYPES

- Type 61: Connecticut Shade; produced in the Connecticut Valley sections of Connecticut and Massachusetts.
- Type 62: Georgia and Florida Shade; produced in southwestern Georgia and north-central Florida.

MISCELLANEOUS TYPES OF DOMESTIC TOBACCO

- Type 72: Louisiana Perique.
- Type 73: All domestic types of tobacco not otherwise classified.

FOREIGN TYPES

- Type 81: Cuba
- Type 82: Indonesia
- Type 83: Philippine Islands
- Type 84: Brazil
- Type 85: Colombia
- Type 86: Dominican Republic
- Type 87: Paraguay
- Type 88: Mexico
- Type 89: Other foreign-grown cigar leaf
- Type 91: Foreign-grown Oriental and Aromatic
- Type 92: Foreign-grown flue-cured
- Type 93: Foreign-grown burley

STOCKS OF LEAF TOBACCO OWNED BY DEALERS AND MANUFACTURERS 1/ 2/

Total stocks of leaf tobacco lower than a year ago.

Leaf tobacco stocks in the United States and Puerto Rico totaled 3,762 million pounds as of July 1, 1974. This was a decline of 277 million pounds from the previous July 1.

Domestic flue-cured and burley tobaccos led the decline but almost all types recorded lower inventories. Imported tobaccos showed large gains, especially foreign burley and flue-cured.

Stocks as of July 1, 1974, included 432.8 million pounds of leaf tobacco under Government loan. This was 275.1 million less than a year ago. These loan stocks were divided as follows:

| | | | |
|--------------------------|----------------------|---|---|
| flue-cured | 276.7 million pounds | | |
| burley | 146.3 | " | " |
| fire-cured | 1.4 | " | " |
| dark air-cured | 6.2 | " | " |
| cigar leaf | 2.2 | " | " |

Sales have been heavy in the flue-cured and burley cooperatives with only 153 million pounds of flue-cured and 68 million pounds of burley actually uncommitted and available for sale as of July 1.

1/ Figures quoted for type totals in this summary are the farm-sales-weight equivalent of reported stocks. (See table in body of report for reported weight basis.) This report is issued quarterly.

2/ All Government loan stocks are reported by grower cooperatives, which are considered dealers for stocks reporting purposes.

Table 1. Factors for adjusting stocks reported by dealers and manufacturers to a farm-sales-weight equivalent, by types of tobacco

AUCTION MARKET AREAS (Types 11-37) 1/

| Type Name | Type number | Factors to multiply by to convert - | | | |
|---|-------------|-------------------------------------|------------------------------|------------------------------|------------------------------|
| | | Stemmed stocks to - | | Unstemmed stocks to - | |
| | | Unstemmed equivalent | Farm-sales weight equivalent | Farm-sales-weight equivalent | From packed weight <u>1/</u> |
| Flue-cured | 11-14 | 1.295 | 1.450 | | 1.12 |
| Virginia fire-cured. | 21 | 1.299 | 1.598 | | 1.23 |
| Tennessee and Kentucky fire-cured | 22-23 | 1.324 | <u>2/</u> 1.471 | | 1.04 |
| Burley | 31 | 1.345 | 1.510 | | 1.12 |
| Southern Maryland. | 32 | 1.373 | 1.400 | | 1.02 |
| One Sucker | 35 | 1.413 | 1.554 | | 1.10 |
| Green River. | 36 | 1.389 | 1.570 | | 1.13 |
| Virginia sun-cured | 37 | 1.326 | 1.538 | | 1.16 |
| Miscellaneous domestic | 72-73 | 1.333 | 1.493 | | 1.12 |

DOMESTIC-GROWN CIGAR LEAF (Types 41-62)

| Type Name | Type number | Unstemmed equivalent | Farm-sales weight equivalent | Average for July 1, 1974 | | | |
|------------------------------------|-------------|----------------------|------------------------------|--------------------------|-------------------------|------------------------|---------------------------|
| | | | | Sweated weight <u>3/</u> | Marked weight <u>3/</u> | sales-weight <u>3/</u> | report <u>3/</u> |
| | | | | <u>2/</u> | <u>3/</u> | <u>3/</u> | <u>3/</u> |
| Pennsylvania Seedleaf. | 41 | 1.444 | 1.718 | 1.19 | 1.05 | 1.00 | 1.02 |
| Ohio | 42-44 | 1.454 | 1.730 | 1.19 | 1.05 | 1.00 | 1.11 |
| Puerto Rican | 46 | 1.314 | 1.551 | 1.18 | 1.16 | 1.00 | (1.16-U.S. (1.05-P.R.) |
| Connecticut Broadleaf. | 51 | 1.375 | 1.622 | 1.18 | 1.04 | 1.00 | 1.08 |
| Connecticut Havana Seed. | 52 | 1.386 | 1.635 | 1.18 | 1.04 | 1.00 | 1.17 |
| Southern Wisconsin | 54 | 1.383 | 1.687 | 1.22 | 1.06 | 1.00 | 1.02 |
| Northern Wisconsin | 55 | 1.404 | 1.713 | 1.22 | 1.06 | 1.00 | 1.04 |
| Connecticut Shade. | 61 | 1.245 | 1.419 | 1.14 | 1.10 | 1.00 | 1.09 |
| Georgia and Florida Shade. | 62 | 1.235 | 1.408 | 1.14 | 1.10 | 1.00 | 1.11 |

IMPORTED LEAF (Types 81-93)

| | | | | | |
|---|-------|-------|-------|--|------|
| Cigar Leaf | 81-89 | 1.400 | 1.624 | | 1.16 |
| Foreign-grown Oriental and Aromatic | 91 | 1.333 | 1.466 | | 1.10 |
| Foreign-grown flue-cured | 92 | 1.295 | 1.450 | | 1.12 |
| Foreign-grown burley | 93 | 1.345 | 1.506 | | 1.12 |

1/ Types 11-37 are reported on the basis of packed weight.

2/ Farm-sales-weight equivalent based on unstemmed sweated weight factor.

3/ The instructions for reporting unstemmed cigar-leaf of the domestic types require that dealers and manufacturers indicate the weight basis on which the tobacco is reported, namely, farm-sales-weight, marked weight, or sweated weight. The stocks are converted to the farm-sales-weight equivalent on the basis of average factors reflecting the percentage reported each quarter in each of these three categories.

Table 2. Stocks of leaf tobacco owned by dealers and manufacturers, by types, converted to a farm-sales-weight equivalent. July 1, 1974, compared with other quarters 1/

FARM SALES WEIGHT

| | U.S. type number | July 1, | | | April 1, 1974 | January 1, 1974 | October 1, 1973 |
|--|------------------|-----------|-----------|-----------|---------------|-----------------|-----------------|
| | | 1974 | 1973 | 1972 | | | |
| Flue-cured | 11-14 | 1,607,284 | 1,749,294 | 1,910,176 | 1,926,508 | 2,232,368 | 2,111,691 |
| Virginia fire-cured | 21 | 8,442 | 8,659 | 10,257 | 9,635 | 6,911 | 7,628 |
| Tennessee and Kentucky fire-cured (Eastern District) | 22 | 48,668 | 54,275 | 53,816 | 54,509 | 39,801 | 48,029 |
| Kentucky and Tennessee (Western District) | 23 | 6,693 | 10,735 | 9,368 | 9,102 | 7,540 | 9,228 |
| Total fire-cured | 21-23 | 63,803 | 73,669 | 73,441 | 73,246 | 54,252 | 64,885 |
| Burley | 31 | 1,216,535 | 1,384,250 | 1,390,121 | 1,377,494 | 1,353,545 | 1,229,175 |
| Southern Maryland | 32 | 67,918 | 59,613 | 60,898 | 39,989 | 43,842 | 52,682 |
| Total light air-cured | 31-32 | 1,284,453 | 1,443,863 | 1,451,019 | 1,417,483 | 1,397,387 | 1,281,857 |
| One Sucker | 35 | 27,845 | 30,657 | 33,283 | 30,504 | 27,649 | 28,030 |
| Green River | 36 | 15,369 | 17,763 | 17,691 | 17,532 | 15,813 | 16,685 |
| Virginia Sun-cured | 37 | 3,177 | 3,472 | 3,294 | 3,399 | 3,271 | 3,204 |
| Total dark air-cured | 35-37 | 46,391 | 51,892 | 54,268 | 51,435 | 46,733 | 47,919 |
| Pennsylvania Seedleaf | 41 | 49,214 | 57,946 | 79,117 | 55,190 | 44,951 | 53,720 |
| Ohio Filler (Miami Valley) | 42-44 | 6,849 | 7,614 | 8,278 | 8,538 | 5,797 | 6,830 |
| Puerto Rican: | | | | | | | |
| in United States | 46 | 2,841 | 3,338 | 3,809 | 1,850 | 3,203 | 3,273 |
| in Puerto Rico | 46 | 8,449 | 7,263 | 11,059 | 4,637 | 3,451 | 5,919 |
| Total cigar filler | 41-46 | 67,353 | 76,161 | 102,263 | 70,215 | 57,402 | 69,742 |
| Connecticut Valley Broadleaf | 51 | 5,132 | 5,404 | 5,587 | 5,673 | 5,250 | 5,362 |
| Connecticut Valley Havana Seed | 52 | 2,288 | 2,212 | 2,329 | 2,006 | 2,165 | 2,123 |
| Southern Wisconsin | 54 | 21,857 | 21,524 | 22,495 | 24,242 | 16,208 | 19,447 |
| Northern Wisconsin | 55 | 20,433 | 22,841 | 21,480 | 23,429 | 18,298 | 19,546 |
| Total cigar binder | 51-55 | 49,710 | 51,981 | 51,891 | 55,350 | 41,921 | 46,478 |
| Connecticut shade | 61 | 8,503 | 10,745 | 13,168 | 9,804 | 10,762 | 11,384 |
| Georgia and Florida shade | 62 | 6,534 | 6,982 | 6,652 | 7,303 | 7,308 | 6,946 |
| Total cigar wrapper | 61-62 | 15,037 | 17,727 | 19,820 | 17,107 | 18,070 | 18,330 |
| Perique | 72 | 601 | 691 | 694 | 575 | 734 | 663 |
| Other miscellaneous domestic 2/ | 73 | 5,899 | 5,367 | 5,465 | 5,465 | 5,720 | 5,420 |
| Total miscellaneous domestic | 72-73 | 6,500 | 6,058 | 6,159 | 6,040 | 6,454 | 6,083 |
| Cuba | 81 | 172 | 298 | 503 | 191 | 279 | 300 |
| Indonesia | 82 | 10,644 | 9,045 | 4,337 | 10,561 | 9,763 | 10,226 |
| Philippine Islands | 83 | 40,896 | 31,101 | 33,923 | 35,309 | 33,535 | 33,237 |
| Brazil | 84 | 8,937 | 10,439 | 8,019 | 7,923 | 7,719 | 8,804 |
| Colombia | 85 | 9,746 | 13,195 | 11,120 | 9,809 | 10,433 | 13,363 |
| Dominican Republic | 86 | 21,987 | 18,656 | 11,950 | 22,780 | 17,908 | 16,556 |
| Paraguay | 87 | 8,326 | 6,717 | 4,112 | 7,106 | 9,019 | 7,273 |
| Mexico | 88 | 3,018 | 4,929 | 6,007 | 4,449 | 4,791 | 6,395 |
| Other foreign-grown cigar leaf | 89 | 20,393 | 19,777 | 13,791 | 22,327 | 18,856 | 19,161 |
| Total imported leaf | 81-89 | 124,119 | 114,157 | 93,762 | 120,455 | 112,303 | 115,315 |
| Foreign-grown Oriental and Aromatic: | 91 | 383,435 | 388,385 | 389,429 | 373,592 | 355,127 | 360,425 |
| Foreign-grown flue-cured | 92 | 46,755 | 38,179 | 24,402 | 43,802 | 37,802 | 37,679 |
| Foreign-grown burley | 93 | 67,285 | 27,490 | 9,370 | 59,320 | 49,396 | 35,925 |
| Total imported cigarette and smoking tobacco leaf | 91-93 | 497,475 | 454,054 | 423,201 | 476,714 | 442,325 | 434,029 |
| Total all types | 11-93 | 3,762,125 | 4,038,856 | 4,186,000 | 4,214,553 | 4,409,215 | 4,196,329 |

1/ Totals include stocks of leaf tobacco sheet. See separate reporting in table 4.

2/ Type 73 is defined as all domestic tobacco not otherwise classified.

Table 3. Production, stocks, supply, disappearance on a farm-sales-weight basis, and price of specified types, 1965-74 1/

FARM SALES WEIGHT

FLUE-CURED, TYPES 11-14

| Marketing year beginning July 1 | Carryover stocks (July 1) 2/ | | | | Pro-duction | Total supply | Disappearance | | | Average price to growers |
|---------------------------------|------------------------------|----------------|----------------|----------------|----------------|----------------|----------------|----------------|----------------|--------------------------|
| | Manu- facturers | Under Loan | Other | Total | | | Total | Export | Other | |
| | Million pounds | Million pounds | Million pounds | Million pounds | Million pounds | Million pounds | Million pounds | Million pounds | Million pounds | Cents |
| 1965 | 1,362.9 | 918.5 | 274.0 | 2,555.4 | 1,059.0 | 3,614.3 | 1,175.5 | 423.1 | 752.4 | 64.6 |
| 1966 | 1,349.2 | 836.4 | 253.2 | 2,438.8 | 1,107.9 | 3,546.7 | 1,274.2 | 587.1 | 687.1 | 66.9 |
| 1967 | 1,306.1 | 685.4 | 281.0 | 2,272.5 | 1,250.0 | 3,522.5 | 1,221.0 | 533.3 | 687.7 | 64.2 |
| 1968 | 1,257.5 | 773.4 | 270.6 | 2,301.5 | 995.6 | 3,297.2 | 1,197.1 | 525.3 | 671.8 | 66.6 |
| 1969 | 1,080.8 | 800.5 | 218.8 | 2,100.1 | 1,052.8 | 3,152.9 | 1,180.5 | 534.6 | 645.9 | 72.4 |
| 1970 | 1,013.8 | 744.9 | 213.7 | 1,972.4 | 1,178.1 | 3,150.5 | 1,174.1 | 534.0 | 640.1 | 72.0 |
| 1971 | 1,010.0 | 761.9 | 204.5 | 1,976.4 | 1,076.3 | 3,052.8 | 1,142.6 | 480.0 | 662.6 | 77.2 |
| 1972 | 1,086.6 | 617.8 | 205.8 | 1,910.2 | 1,022.1 | 2,932.3 | 1,183.0 | 518.8 | 664.2 | 85.3 |
| 1973 | 1,153.7 | 402.3 | 193.3 | 1,749.3 | 1,159.0 | 2,908.3 | 1,301.0 | 598.0 | 703.0 | 88.1 |
| 1974 3/ | 1,154.2 | 276.7 | 176.4 | 1,607.3 | | | | | | |

TOTAL, TYPES 61-62

| | | | | | | | | | | |
|---------|------|----|-----|------|------|------|------|-----|------|-------|
| 1965 | 17.9 | -- | 3.7 | 21.6 | 22.9 | 44.5 | 20.0 | 5.1 | 14.9 | 241.0 |
| 1966 | 20.1 | -- | 4.4 | 24.5 | 21.0 | 45.5 | 20.8 | 4.2 | 16.6 | 257.0 |
| 1967 | 19.5 | -- | 5.2 | 24.7 | 17.6 | 42.3 | 20.8 | 4.9 | 15.8 | 308.0 |
| 1968 | 17.8 | -- | 3.7 | 21.5 | 18.1 | 39.6 | 19.9 | 3.9 | 16.0 | 276.0 |
| 1969 | 17.7 | -- | 2.0 | 19.7 | 15.9 | 35.5 | 14.1 | 1.9 | 12.2 | 341.3 |
| 1970 | 19.0 | -- | 2.4 | 21.4 | 14.9 | 36.4 | 14.3 | 1.9 | 12.5 | 351.0 |
| 1971 | 19.3 | -- | 2.7 | 22.0 | 12.5 | 34.4 | 14.6 | 3.5 | 11.1 | 347.5 |
| 1972 | 17.1 | -- | 2.7 | 19.8 | 9.7 | 29.5 | 11.8 | 3.2 | 8.5 | 387.1 |
| 1973 | 14.7 | -- | 3.0 | 17.7 | 9.8 | 27.5 | 12.5 | 2.4 | 10.1 | 452.2 |
| 1974 3/ | 12.0 | -- | 3.0 | 15.0 | | | | | | |

CONNECTICUT SHADE, TYPE 61

| | | | | | | | | | | |
|---------|------|----|-----|------|------|------|------|-----|------|-------|
| 1965 | 12.7 | -- | 1.6 | 14.3 | 14.6 | 28.8 | 12.5 | 3.3 | 9.2 | 250.0 |
| 1966 | 13.9 | -- | 2.4 | 16.3 | 13.7 | 30.0 | 14.0 | 3.5 | 10.5 | 295.0 |
| 1967 | 13.3 | -- | 2.7 | 16.0 | 9.6 | 25.6 | 12.9 | 3.3 | 9.6 | 360.0 |
| 1968 | 11.5 | -- | 1.2 | 12.7 | 10.2 | 22.9 | 10.8 | 1.7 | 9.1 | 280.0 |
| 1969 | 11.2 | -- | 1.0 | 12.1 | 8.1 | 20.2 | 8.0 | 1.0 | 7.0 | 400.0 |
| 1970 | 11.5 | -- | 0.7 | 12.2 | 9.3 | 21.5 | 7.6 | 0.9 | 6.7 | 400.0 |
| 1971 | 12.5 | -- | 1.4 | 13.9 | 7.7 | 21.6 | 8.4 | 2.7 | 5.7 | 400.0 |
| 1972 | 11.4 | -- | 1.8 | 13.2 | 5.1 | 18.2 | 7.5 | 2.8 | 4.7 | 485.0 |
| 1973 | 9.0 | -- | 1.7 | 10.7 | 6.0 | 16.8 | 8.3 | 1.9 | 6.4 | 515.0 |
| 1974 3/ | 6.9 | -- | 1.6 | 8.5 | | | | | | |

GEORGIA AND FLORIDA SHADE, TYPE 62

| | | | | | | | | | | |
|---------|-----|----|-----|-----|-----|------|-----|-----|-----|-------|
| 1965 | 5.4 | -- | 1.9 | 7.3 | 8.3 | 15.6 | 7.4 | 1.9 | 5.5 | 225.0 |
| 1966 | 6.2 | -- | 2.0 | 8.2 | 7.3 | 15.5 | 6.8 | 0.7 | 6.1 | 185.0 |
| 1967 | 6.2 | -- | 2.5 | 8.7 | 8.0 | 16.7 | 7.9 | 1.6 | 6.3 | 245.0 |
| 1968 | 6.3 | -- | 2.5 | 8.8 | 7.9 | 16.7 | 9.2 | 2.1 | 7.1 | 270.0 |
| 1969 | 6.5 | -- | 1.0 | 7.5 | 7.8 | 15.3 | 6.1 | 0.9 | 5.2 | 280.0 |
| 1970 | 7.5 | -- | 1.7 | 9.2 | 5.6 | 14.8 | 6.7 | 0.9 | 5.8 | 270.0 |
| 1971 | 6.8 | -- | 1.3 | 8.1 | 4.7 | 12.8 | 6.2 | 0.8 | 5.4 | 262.0 |
| 1972 | 5.7 | -- | 0.9 | 6.7 | 4.6 | 11.3 | 4.3 | 0.4 | 3.9 | 280.0 |
| 1973 | 5.7 | -- | 1.3 | 7.0 | 3.7 | 10.7 | 4.2 | 0.5 | 3.6 | 350.0 |
| 1974 3/ | 5.1 | -- | 1.4 | 6.5 | | | | | | |

1/ Annual disappearance for a type is calculated for the marketing year established for that type, the year beginning on the quarterly reporting date on which stocks of the type are at their lowest point and before the new crop enters stocks.

2/ The carryover stocks have been tabulated separately according to broad groupings of ownership, namely manufacturers, under loan, and all other. "Other" reflects stocks reported by tobacco dealers and stocks held in the United States by representatives of foreign manufacturers. The quantities shown as owned by dealers may include some tobacco held by dealers which is earmarked for sale to domestic manufacturers or for export.

3/ Subject to revision.

Detail may not add to total because of rounding.

Table 4. Summary of tobacco leaf represented in inventories of tobacco sheet, for cigar binder and wrapper, and for cigarettes (including smoking tobacco), separately

REPORTED WEIGHT

| | | Cigar Binder and Wrapper | | | | | |
|------------------|-----------|--------------------------|-----------|-----------|-----------|------------|------------|
| U.S. type number | | July 1, | | | April 1, | January 1, | October 1, |
| | | 1974 | 1973 | 1972 | 1974 | 1974 | 1973 |
| | | 1,000 lb. | 1,000 lb. | 1,000 lb. | 1,000 lb. | 1,000 lb. | 1,000 lb. |
| 11-14 | Stemmed | 5 | 5 | 0 | 4 | 5 | 6 |
| 32 | Stemmed | 42 | 51 | 48 | 37 | 48 | 52 |
| 41 | Unstemmed | 341 | 693 | 788 | 407 | 354 | 487 |
| | Stemmed | 689 | 450 | 577 | 477 | 545 | 417 |
| | Total | 1,030 | 1,143 | 1,365 | 884 | 899 | 904 |
| 42-44 | Stemmed | 14 | 33 | 37 | 13 | 31 | 34 |
| 46 | Unstemmed | 6 | 0 | 0 | 0 | 0 | 0 |
| | Stemmed | 0 | 7 | 9 | 5 | 7 | 6 |
| | Total | 6 | 7 | 9 | 5 | 7 | 6 |
| 51 | Unstemmed | 12 | 85 | 24 | 47 | 31 | 30 |
| | Stemmed | 0 | 0 | 0 | 0 | 9 | 0 |
| | Total | 12 | 85 | 24 | 47 | 40 | 30 |
| 52 | Unstemmed | 0 | 41 | 67 | 45 | 40 | 41 |
| | Stemmed | 57 | 0 | 0 | 4 | 5 | 0 |
| | Total | 57 | 41 | 67 | 49 | 45 | 41 |
| 54 | Stemmed | 187 | 283 | 393 | 137 | 156 | 189 |
| 55 | Unstemmed | 4 | 2 | 21 | 2 | 2 | 2 |
| | Stemmed | 20 | 34 | 69 | 19 | 34 | 26 |
| | Total | 24 | 36 | 90 | 21 | 36 | 28 |
| 61 | Unstemmed | 2 | 19 | 15 | 1 | 10 | 10 |
| | Stemmed | 14 | 16 | 10 | 12 | 5 | 6 |
| | Total | 16 | 35 | 25 | 13 | 15 | 16 |
| 62 | Stemmed | 2 | 1 | 10 | 1 | 0 | 1 |
| 81-89 | Unstemmed | 9 | 9 | 29 | 6 | 154 | 8 |
| | Stemmed | 203 | 193 | 186 | 188 | 166 | 204 |
| | Total | 212 | 202 | 215 | 194 | 320 | 212 |
| Total | Unstemmed | 374 | 849 | 944 | 508 | 591 | 578 |
| | Stemmed | 1,233 | 1,073 | 1,339 | 897 | 1,011 | 941 |
| | Total | 1,607 | 1,922 | 2,283 | 1,405 | 1,602 | 1,519 |

Cigarettes (including smoking tobacco)

| | | | | | | | |
|-------|-----------|--------|--------|--------|--------|--------|--------|
| 11-14 | Unstemmed | 1,350 | 978 | 1,628 | 1,164 | 1,093 | 1,167 |
| | Stemmed | 10,340 | 10,900 | 9,909 | 10,179 | 10,866 | 11,181 |
| | Total | 11,690 | 11,878 | 11,537 | 11,343 | 11,959 | 12,348 |
| 31 | Unstemmed | 510 | 857 | 963 | 520 | 586 | 744 |
| | Stemmed | 5,624 | 5,904 | 6,410 | 5,315 | 5,299 | 5,528 |
| | Total | 6,134 | 6,761 | 7,373 | 5,835 | 5,885 | 6,272 |
| 32 | Stemmed | 130 | 113 | 114 | 133 | 140 | 117 |
| 41 | Unstemmed | 239 | 423 | 1,919 | 239 | 262 | 346 |
| | Stemmed | 28 | 79 | 573 | 28 | 36 | 60 |
| | Total | 267 | 502 | 2,492 | 267 | 298 | 406 |
| 61 | Unstemmed | 15 | 35 | 38 | 15 | 23 | 27 |
| | Stemmed | 18 | 16 | 74 | 18 | 16 | 16 |
| | Total | 33 | 51 | 112 | 33 | 39 | 43 |
| 91 | Unstemmed | 3,571 | 2,804 | 4,394 | 3,318 | 3,019 | 3,028 |
| | Stemmed | 1,162 | 1,360 | 1,245 | 1,208 | 1,270 | 1,315 |
| | Total | 4,733 | 4,164 | 5,639 | 4,526 | 4,289 | 4,343 |
| 92 | Stemmed | 0 | 0 | 374 | 0 | 0 | 0 |
| Total | Unstemmed | 5,685 | 5,097 | 8,942 | 5,256 | 4,983 | 5,312 |
| | Stemmed | 17,302 | 18,372 | 18,699 | 16,881 | 17,627 | 18,217 |
| | Total | 22,987 | 23,469 | 27,641 | 22,137 | 22,610 | 23,529 |

GRAND TOTAL

| | | | | | | | |
|-----------|-----------|--------|--------|--------|--------|--------|--------|
| Total | Unstemmed | 6,059 | 5,946 | 9,886 | 5,764 | 5,574 | 5,890 |
| All Types | Stemmed | 18,535 | 19,445 | 20,038 | 17,778 | 18,638 | 19,158 |
| | Total | 24,594 | 25,391 | 29,924 | 23,542 | 24,212 | 25,048 |

Table 5. Stocks of leaf tobacco, by types, showing separately quantities owned by dealers and manufacturers, July 1, 1974 compared with July 1, 1973 1/ 2/

REPORTED WEIGHT

| U.S. Type Number | Reported as owned by manufacturers ^{3/} | | | | Reported as owned by dealers (including loan stocks) ^{3/} | | | |
|------------------|--|------------------|------------------|------------------|--|------------------|------------------|------------------|
| | July 1, 1974 | | | July 1, 1973 | July 1, 1974 | | | July 1, 1973 |
| | Unstemmed | Stemmed | Total | | Unstemmed | Stemmed | Total | |
| | <u>1,000 lb.</u> | <u>1,000 lb.</u> | <u>1,000 lb.</u> | <u>1,000 lb.</u> | <u>1,000 lb.</u> | <u>1,000 lb.</u> | <u>1,000 lb.</u> | <u>1,000 lb.</u> |
| 11-14 | 5,543 | 796,000 | 801,543 | 798,788 | 151,870 | 190,884 | 342,754 | 475,263 |
| 21 | 3,570 | 36 | 3,606 | 3,964 | 3,144 | 79 | 3,223 | 3,048 |
| 22 | 32,709 | 241 | 32,950 | 33,858 | 13,722 | 17 | 13,739 | 18,163 |
| 23 | 3,947 | 55 | 4,002 | 5,005 | 2,411 | 0 | 2,411 | 5,061 |
| 21-23 | 40,226 | 332 | 40,558 | 42,827 | 19,277 | 96 | 19,373 | 26,272 |
| 31 | 32,823 | 655,645 | 688,468 | 700,150 | 126,095 | 32,135 | 158,230 | 283,860 |
| 32 | 12,201 | 21,287 | 33,488 | 27,570 | 8,606 | 12,065 | 20,671 | 20,004 |
| 31-32 | 45,024 | 676,932 | 721,956 | 727,720 | 134,701 | 44,200 | 178,901 | 303,864 |
| 35 | 11,016 | 6,466 | 17,482 | 16,864 | 5,004 | 113 | 5,117 | 8,013 |
| 36 | 7,586 | 1,793 | 9,379 | 8,159 | 3,301 | 160 | 3,461 | 6,731 |
| 37 | 1,309 | 1,077 | 2,386 | 2,561 | 0 | 1 | 1 | 13 |
| 35-37 | 19,911 | 9,336 | 29,247 | 27,584 | 8,305 | 274 | 8,579 | 14,757 |
| 41 | 19,079 | 10,480 | 29,559 | 34,430 | 8,967 | 1,515 | 10,482 | 12,799 |
| 42-44 | 5,311 | 137 | 5,448 | 5,946 | 587 | 38 | 625 | 739 |
| 46 ^{4/} | 576 | 1,844 | 2,420 | 3,101 | 7,213 | 87 | 7,300 | 5,986 |
| 41-46 | 24,966 | 12,461 | 37,427 | 43,477 | 16,767 | 1,640 | 18,407 | 19,524 |
| 51 | 1,083 | 530 | 1,613 | 1,674 | 2,702 | 113 | 2,815 | 2,884 |
| 52 | 815 | 26 | 841 | 808 | 1,037 | 49 | 1,086 | 1,121 |
| 54 | 16,281 | 1,979 | 18,260 | 18,201 | 1,199 | 408 | 1,607 | 1,215 |
| 55 | 11,934 | 3,895 | 15,829 | 16,830 | 1,190 | 66 | 1,256 | 1,830 |
| 51-55 | 30,113 | 6,430 | 36,543 | 37,513 | 6,128 | 636 | 6,764 | 7,050 |
| 61 | 5,246 | 846 | 6,092 | 7,990 | 1,448 | 4 | 1,452 | 1,615 |
| 62 | 4,123 | 385 | 4,508 | 5,029 | 484 | 624 | 1,108 | 1,034 |
| 61-62 | 9,369 | 1,231 | 10,600 | 13,019 | 1,932 | 628 | 2,560 | 2,649 |
| 72 | 4 | 279 | 283 | 339 | 0 | 121 | 121 | 142 |
| 73 ^{5/} | 0 | 3,906 | 3,906 | 3,570 | 0 | 46 | 46 | 25 |
| 72-73 | 4 | 4,185 | 4,189 | 3,909 | 0 | 167 | 167 | 167 |
| 81 | 3 | 28 | 31 | 78 | 11 | 68 | 79 | 114 |
| 82 | 2,480 | 1,838 | 4,318 | 2,541 | 3,816 | 218 | 4,034 | 4,677 |
| 83 | 4,952 | 6,617 | 11,569 | 11,354 | 4,886 | 11,538 | 16,424 | 11,431 |
| 84 | 2,477 | 1,442 | 3,919 | 5,230 | 2,990 | 156 | 3,146 | 3,117 |
| 85 | 1,797 | 3,740 | 5,537 | 6,972 | 1,349 | 14 | 1,363 | 2,972 |
| 86 | 10,007 | 4,266 | 14,273 | 11,883 | 2,370 | 433 | 2,803 | 2,511 |
| 87 | 3,767 | 758 | 4,525 | 2,268 | 2,304 | 32 | 2,336 | 3,167 |
| 88 | 1,259 | 720 | 1,979 | 2,487 | 275 | 43 | 318 | 1,365 |
| 89 | 5,051 | 2,775 | 7,826 | 7,983 | 7,701 | 674 | 8,375 | 8,286 |
| 81-89 | 31,793 | 22,184 | 53,977 | 50,796 | 25,702 | 13,176 | 38,878 | 37,640 |
| 91 | 345,543 | 2,025 | 347,568 | 350,765 | 333 | 1 | 334 | 496 |
| 92 | 5,603 | 15,616 | 21,219 | 17,529 | 9,297 | 5,120 | 14,417 | 13,445 |
| 93 | 3,830 | 35,080 | 38,910 | 10,531 | 2,428 | 4,944 | 7,372 | 9,431 |
| 91-93 | 354,976 | 52,721 | 407,697 | 378,825 | 12,058 | 10,065 | 22,123 | 23,372 |
| 11-93 | 561,925 | 1,581,812 | 2,143,737 | 2,124,458 | 376,740 | 261,766 | 638,506 | 910,558 |

^{1/} Total includes stocks of leaf reported in tobacco sheet. See separate reportings in Table 4.

^{2/} These statistics represent the quantity of leaf tobacco owned by dealers and manufacturers and others subject to the provisions of PL 661 enacted January 14, 1929 and the amendments thereto.

^{3/} The quantities shown as owned by manufacturers represent domestic manufacturers only. All Government loan stocks are dealers' holdings.

^{4/} Includes stocks on the island of Puerto Rico.

^{5/} For explanation of stocks included in this classification see footnote 2 on Page 5.

Table 6. Stocks of leaf tobacco owned by dealers and manufacturers, summary by types, July 1, 1974 compared with other quarters 1/ 2/

REPORTED WEIGHT

| TYPE NAME | U.S. type number | July 1, 1974 3/ | | | July 1, 1973 | April 1, 1974 | January 1 1974 |
|--|------------------|-----------------|-----------|-----------|--------------|---------------|----------------|
| | | Unstemmed | Stemmed | Total | | | |
| | | 1,000 lb. | 1,000 lb. | 1,000 lb. | 1,000 lb. | 1,000 lb. | 1,000 lb. |
| Flue-cured | 11-14 | 157,413 | 986,884 | 1,144,297 | 1,274,051 | 1,381,616 | 1,608,209 |
| Virginia fire-cured | 21 | 6,714 | 115 | 6,829 | 7,012 | 7,748 | 5,561 |
| Tennessee and Kentucky fire-cured (Eastern District) | 22 | 46,431 | 258 | 46,689 | 52,021 | 52,218 | 38,126 |
| Kentucky and Tennessee fire-cured (Western District) | 23 | 6,358 | 55 | 6,413 | 10,066 | 8,501 | 6,998 |
| Total fire-cured | 21-23 | 59,503 | 428 | 59,931 | 69,099 | 68,530 | 50,685 |
| Burley | 31 | 158,918 | 687,780 | 846,698 | 984,010 | 961,655 | 971,380 |
| Southern Maryland | 32 | 20,807 | 33,352 | 54,159 | 47,574 | 30,418 | 33,888 |
| Total light air-cured | 31-32 | 179,725 | 721,132 | 900,857 | 1,031,584 | 992,073 | 1,005,268 |
| One Sucker | 35 | 16,020 | 6,579 | 22,599 | 24,877 | 24,865 | 22,668 |
| Green River | 36 | 10,887 | 1,953 | 12,840 | 14,890 | 14,647 | 13,269 |
| Virginia sun-cured | 37 | 1,309 | 1,078 | 2,387 | 2,574 | 2,539 | 2,436 |
| Total dark air-cured | 35-37 | 28,216 | 9,610 | 37,826 | 42,341 | 42,051 | 38,373 |
| Pennsylvania Seedleaf | 41 | 28,046 | 11,995 | 40,041 | 47,229 | 46,032 | 36,750 |
| Ohio Filler (Miami Valley) | 42-44 | 5,898 | 175 | 6,073 | 6,685 | 7,585 | 5,060 |
| Puerto Rico: | | | | | | | |
| in United States | 46 | 1,045 | 1,050 | 2,095 | 2,495 | 1,248 | 2,345 |
| in Puerto Rico | 46 | 6,744 | 881 | 7,625 | 6,592 | 3,795 | 2,814 |
| Total cigar filler | 41-46 | 41,733 | 14,101 | 55,834 | 63,001 | 58,660 | 46,969 |
| Connecticut Valley Broadleaf | 51 | 3,785 | 643 | 4,428 | 4,558 | 4,879 | 4,464 |
| Connecticut Valley Havana Seed | 52 | 1,852 | 75 | 1,927 | 1,929 | 1,730 | 1,874 |
| Southern Wisconsin | 54 | 17,480 | 2,387 | 19,867 | 19,416 | 22,173 | 14,644 |
| Northern Wisconsin | 55 | 13,124 | 3,961 | 17,085 | 18,660 | 19,817 | 15,067 |
| Total cigar binder | 51-55 | 36,241 | 7,066 | 43,307 | 44,563 | 48,599 | 36,049 |
| Connecticut shade | 61 | 6,694 | 850 | 7,544 | 9,605 | 8,827 | 9,669 |
| Georgia and Florida shade | 62 | 4,607 | 1,009 | 5,616 | 6,063 | 6,332 | 6,261 |
| Total cigar wrapper | 61-62 | 11,301 | 1,859 | 13,160 | 15,668 | 15,159 | 15,930 |
| Perique | 72 | 4 | 400 | 404 | 481 | 393 | 514 |
| Other miscellaneous domestic | 73 4/ | 0 | 3,952 | 3,952 | 3,595 | 3,661 | 3,831 |
| Total miscellaneous domestic | 72-73 | 4 | 4,352 | 4,356 | 4,076 | 4,054 | 4,345 |
| Cuba | 81 | 14 | 96 | 110 | 192 | 121 | 177 |
| Indonesia | 82 | 6,296 | 2,056 | 8,352 | 7,218 | 8,515 | 7,829 |
| Philippine Islands | 83 | 9,838 | 18,155 | 27,993 | 22,785 | 24,975 | 23,943 |
| Brazil | 84 | 5,467 | 1,598 | 7,065 | 8,347 | 6,240 | 6,069 |
| Colombia | 85 | 3,146 | 3,754 | 6,900 | 9,944 | 7,150 | 7,771 |
| Dominican Republic | 86 | 12,377 | 4,699 | 17,076 | 14,394 | 17,965 | 13,725 |
| Paraguay | 87 | 6,071 | 790 | 6,861 | 5,435 | 5,743 | 7,057 |
| Mexico | 88 | 1,534 | 763 | 2,297 | 3,852 | 3,491 | 3,773 |
| Other foreign-grown cigar leaf | 89 | 12,752 | 3,449 | 16,201 | 16,269 | 17,579 | 14,934 |
| Total foreign-grown cigar leaf | 81-89 | 57,495 | 35,360 | 92,855 | 88,436 | 91,779 | 85,278 |
| Foreign-grown Oriental and Aromatic | 91 | 345,876 | 2,026 | 347,902 | 351,261 | 338,929 | 322,097 |
| Foreign-grown flue-cured | 92 | 14,900 | 20,736 | 35,636 | 30,974 | 32,333 | 29,305 |
| Foreign-grown burley | 93 | 6,258 | 40,024 | 46,282 | 19,962 | 40,204 | 34,371 |
| Total imported cigarette and smoking tobacco leaf | 91-93 | 367,034 | 62,786 | 429,820 | 402,197 | 411,466 | 385,773 |
| TOTAL ALL TYPES | 11-93 | 938,665 | 1,843,578 | 2,782,243 | 3,035,016 | 3,113,987 | 3,276,879 |

1/ Totals include stocks of leaf reported in tobacco sheet. See reporting in Table 4.

2/ These statistics represent the quantity of leaf tobacco owned by dealers and manufacturers and others subject to the provisions of PL 661, enacted January 14, 1929 and the amendments thereto.

3/ Subject to revision.

4/ For explanation of stocks included in this classification see footnote 2 on Page 5.

UNITED STATES DEPARTMENT OF AGRICULTURE
WASHINGTON, D. C. 20250

POSTAGE AND FEES PAID
U.S. DEPARTMENT OF
AGRICULTURE
AGR-101



OFFICIAL BUSINESS

PENALTY FOR PRIVATE USE, \$300

NOTICE

If you no longer need this
publication, check here
return this sheet, and your name will
be dropped from the mailing list.

If your address should be changed,
write the new address on this sheet
and return the whole sheet to:

Tobacco Division
Agricultural Marketing Service
U. S. Department of Agriculture
Washington, D. C. 20250

Tobacco Inspection Services are available to all
residents of the United States regardless of race,
creed, or national origin. Violations should be
reported to the Secretary of Agriculture, Washington,
D. C. 20250

