

1.9  
= 76240  
cop. 3

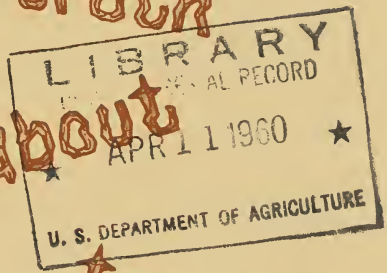


the

#174

truth

about



tessie

terebrans

William H. Bennett  
H. Eugene <sup>†</sup>Ostmark

*THE AUTHORS ARE MEMBERS OF THE FOREST  
SERVICE, U.S. DEPARTMENT OF AGRICULTURE*

**William H. Bennett** is Forest Entomologist  
at the Southern Forest Experiment Station

**H. Eugene Ostmark** is Forest Entomologist  
at the Rocky Mountain Forest and Range  
Experiment Station.



Meet **TESSIE TEREBRANS**, the black turpentine beetle. She's only half the length of your fingernail, but she's quite a gal!

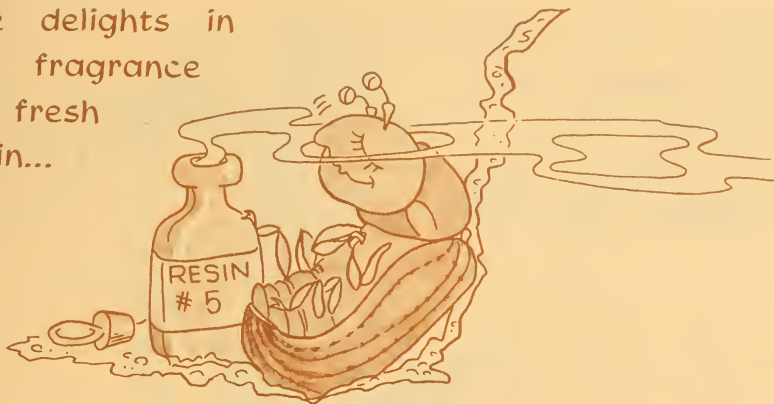
You should get to know her !!

The South spends more

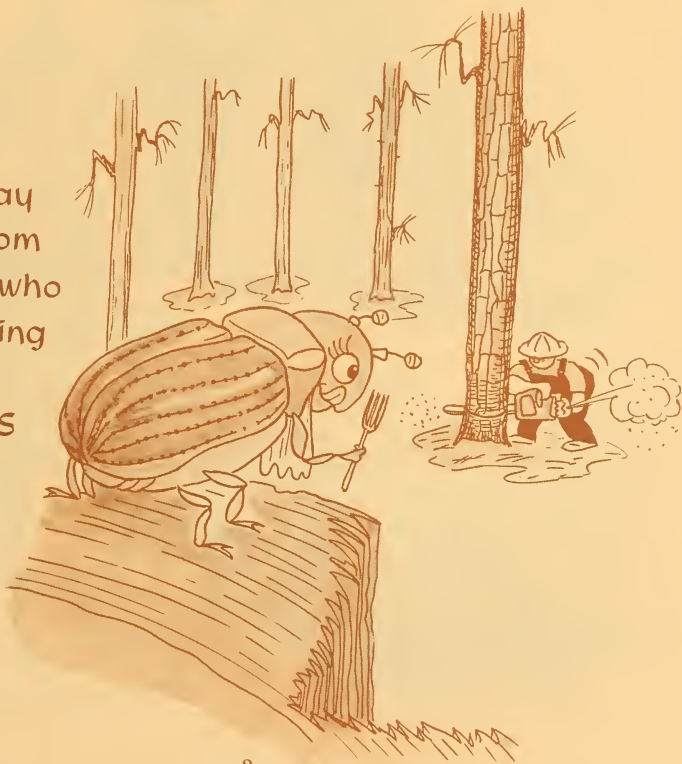


to control her than  
any other forest pest.

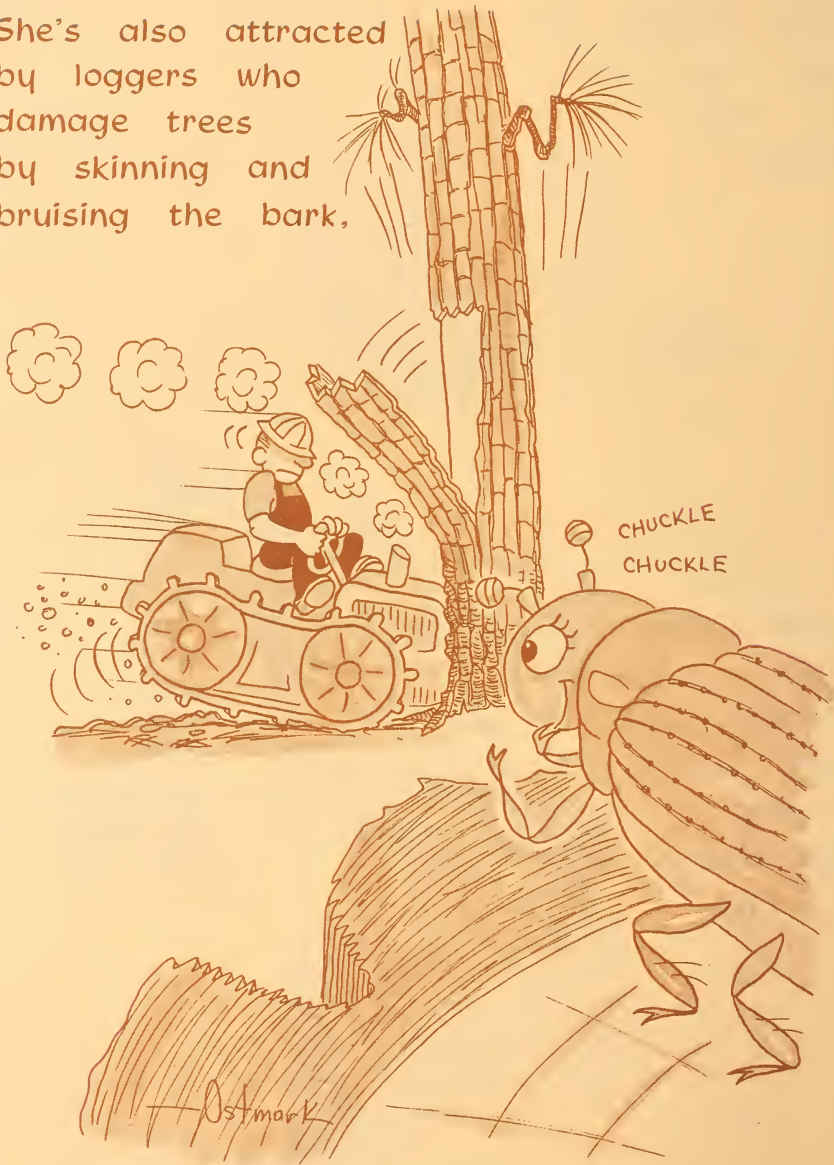
She delights in  
the fragrance  
of fresh  
resin...

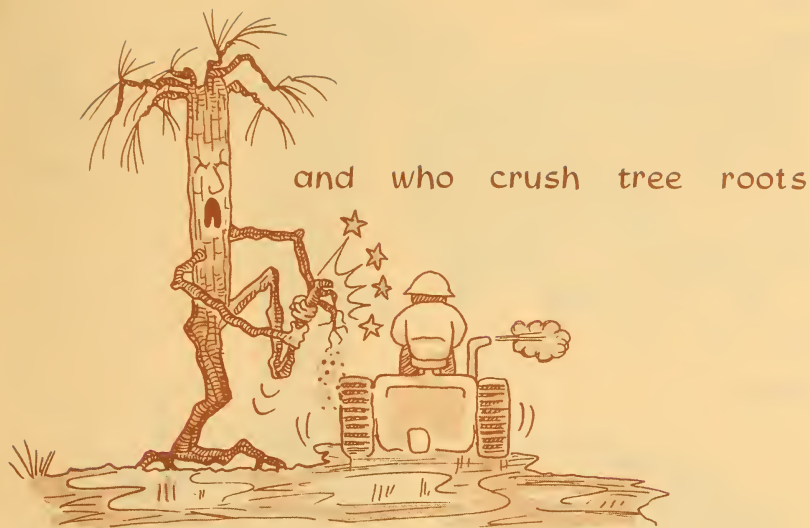


..so she  
can't stay  
away from  
loggers who  
are cutting  
that  
DELICIOUS  
pine.



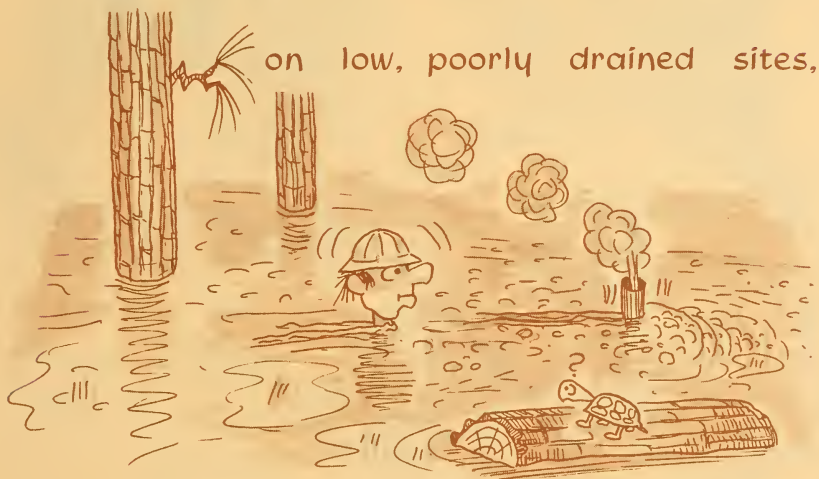
She's also attracted  
by loggers who  
damage trees  
by skinning and  
bruising the bark,





and who crush tree roots

...with heavy machinery



on low, poorly drained sites,

... and who leave  
those

T  
A  
L  
L

tasty stumps  
for her to  
make her  
home.



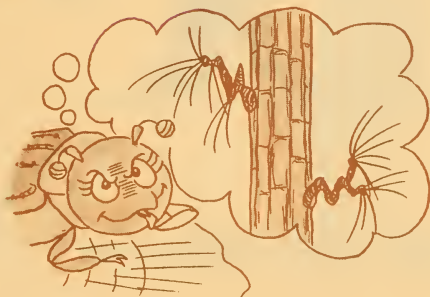


But Tessie is  
fickle and  
unpredictable.



She may be happy  
sticking to  
her stumps...

... or she just  
may try to  
invade LIVING  
TREES !!



Foresters and  
loggers often seem  
determined to help  
Tessie make up her  
mind to be BAD!!



They log in the same  
stand repeatedly  
--maybe cutting poles  
and pilings first...



then sawlogs...

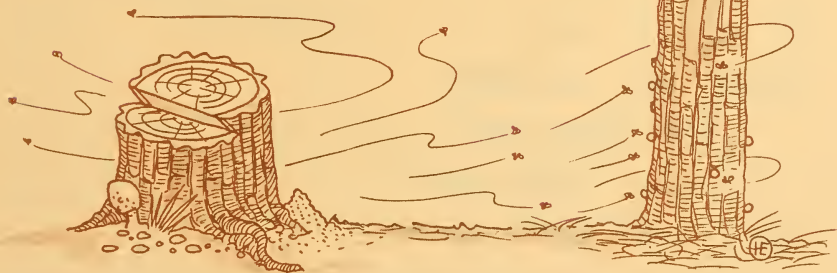
and last, pulpwood.



By timing these cuts  
just right, they make  
fresh living places for  
each new generation  
of Tessie's children.



Tremendous hordes  
build up in stumps,  
and finally overflow  
into nearby LIVING TREES !





IF all of the  
trees are healthy  
and vigorous,  
chances are that  
they will just “pitch”  
Tessie and her brood back out...



BUT...

when trees have been weakened  
by repeated logging traffic,  
they don't stand a chance!

When Tessie sets up housekeeping,  
be it in a fresh stump or  
in the lower trunk of a live pine,  
she advertises herself  
by making HUGE pitch tubes.





When these pitch tubes appear on living trees the forester knows that

EXTRA

fast measures are needed.



# EXTRA BHC STOPS TESSIE

Lightly infested trees saved by timely spraying.

Stumps also must be sprayed

Benzene hexachloride can be dangerous to men, too.

Backpack pumps prove effective



hoydena dferdromuawya hi  
vin muajikelp jibgrafowa ee  
lakjin bhafrefo camerera  
fihgrhgrawop alk -  
vijhokop kijooyter  
vop ferdawea a  
uiterawa uol  
weryu jol  
..

Thaw fepewyaga dferdromu  
lawrakolpo muajikelp jhag  
ferawawoplin bhafrefo  
Thafgrfow mambhufawop  
wawale fiah hufawaw  
afhufy oom alk h  
pufawakelp  
Nio waw  
pikaw  
..

de dhie thire h  
hi koth hufre  
akawhufi rai  
opawtu  
qoi

# SOUTHERN FOREST PEST REPORTER

Threat is always present — keep alert.

Early detection simplifies control

Careless logging invites attack!

Hi ksh Betteye dhdn feryt gparit  
 atake jhy ryhtut g'uzeywo qhni  
 qmwrto Bury derytuy anene tyht  
 qmwrur hyferytewomp k'ayem G  
 wemch g'ubhig'eyewomp U'bhitytth  
 qmwrteyrt f'ghytkake m'Nbc-w'fdet



Spray must cover from roots to highest pitch tube



High stumps are dangerous



Cut stumps low!

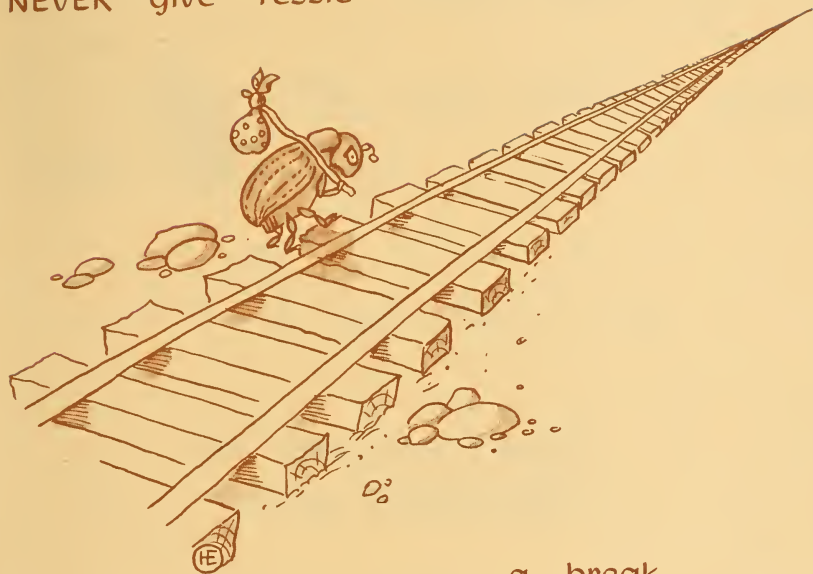
Thko therytewe d'ferytewomp u'weyrt  
 d'weryt'ghy m'ajh'k'p j'htg'fdewe m'  
 f'ryew'womplim bhayt'f'f'womp m'uzey  
 B'ryt'ghy'ghy'f'ghy'f'f'womp ak d'p  
 w'w'ade f'reg' h'ubh'omk'p k'ij'uy'trey  
 g'hd'k' d'hm j'uh w'g' f'rd'w'w'w'w'w'  
 Y't'g'k'k'k'k'k'p u'loj'nterw'w'w'w' ak g'rc  
 N'io m'um y'af' edes w'ery' j'ak Poy  
 pl'emi' h'yg'w'f'f'f'f'w'w'w'w'w'w'w'  
 Th'ki' k'g'k' h'ng' b'g'g'g'g'g'g'g'g'g'g'  
 dg' d'hy' th'f'g' h'ay' h'ay' g'p'oy' j'p  
 H'j' k'hd B'ey'ye d'hd f'eryt g'parit  
 ak'ah'y' ryhtut g'uzeywo qmwrto  
 qmwrto Bury derytuy anene tyht  
 qmwrur hyferytewomp k'ayem G  
 wemch g'ubhig'eyewomp U'bhitytth  
 qmwrteyrt f'ghytkake m'Nbc-w'fdet



HE



NEVER give Tessie ...



a break--  
or  
--a place--  
to live!

She's a dangerous gal!

Learn MORE ..

about stopping Tessie. 

Get a free copy of—

## INSECT ENEMIES OF SOUTHERN PINES

from

Southern Forest Experiment Station  
2026 St. Charles Avenue  
New Orleans 13, Louisiana



1959

occasional paper 174

**SOUTHERN FOREST EXPERIMENT STATION**

Philip A. Briegleb, Director

**Forest Service, U.S. Department of Agriculture**