

Historic, archived document

Do not assume content reflects current scientific knowledge, policies, or practices.

02.73

1123

FALL PLANTING

EVERY DAY someone writes to us to ask: "When is the better time to plant—the fall or the spring?" The answer depends on the sort of material to be planted, the climate in which it is to be planted, and the time when the question is asked. The fall is the better time to handle all plant material of unquestioned hardiness. It is a time of comparative leisure in gardening operations. Generally the weather is pleasant, whereas the spring is usually cold and wet. In the fall the soil is dry, in better

condition for planting, and more pleasant to work with than in spring. Excepting in the very cold states, one may plant practically all the shrubs, trees, and herbaceous plants in the fall. The trees and shrubs should be planted between October 15 and November 15. The herbaceous plants ought to get into the ground between September 15 and October 15. Dutch bulbs and a few lilies must be planted in the fall, and may be planted at no other time. Hardy Roses, Iris, and Peonies give best results when planted in the fall. Except in the South, Evergreens, and such material as Magnolias, Azaleas, and Altheas should be planted in the spring.

It is our practice to ship nothing except at the season when it is likely to give best results. Every order is examined, and every condition likely to affect successful transplanting is considered before the item is marked for shipment. This work is not left to employees; it is done by a responsible official of the company. It is part of our service to our customers.

ELLIOTT NURSERY CO.

Magee Bldg., 336 Fourth Ave. Pittsburgh, Pa.
NURSERIES SPRINGDALE, PA.





KEIZERKROON TULIPS.
The Largest and Showiest of the Early Flowering Tulips. (See page 5.)

Dutch Bulbs

As a rule, we import bulbs to order only, but many of our customers neglect to send us their orders in time, and we are obliged to buy the stock in this country to fill these late orders, charge higher prices, and deliver inferior stock. We have imported a few varieties of the very choicest and most desirable bulbs in excess of our orders and offer them at the same prices as if imported to order. These fine things are described in this catalogue, but the prices quoted will be good only until the stock we have imported is exhausted. We cannot buy these bulbs in America and sell them at such low prices. Much of the stock described was personally selected this summer in Europe. We can not furnish Spanish, English or Dutch Iris, Chionodoxas, Ranunculi, Anemones, etc., because the importation of all bulbs except those offered in this catalogue is prohibited, although they are all similar and grown in the same soil under the same conditions.

Narcissus Bicolor Empress

The Queen of Daffodils

Very large flowers of pure white, with rich yellow trumpet, strikingly beautiful; fine for out of doors or for forcing. This is the finest of all Daffodils and one of the most beautiful hardy flowers grown. It should be planted where it can remain permanently. It will increase in size and beauty year after year. It really gives me great pleasure to offer this grand Daffodil at the following low prices, and it can now be planted by the hundreds and thousands, as it deserves to be. A few years ago it was selling in Holland at \$40 per hundred, when I thought it one of the most beautiful hardy flowers in cultivation—an opinion I still hold, after growing it in my garden ever since. It is an acquaintance that improves with age. The bulbs we offer are from one of the most famous growers in Holland, who has made a specialty of this Daffodil since its introduction. **Monster bulbs, \$1.10 per 12; \$8.00 per 100; \$75 per 1,000.** Large, selected bulbs, 90c per 12; \$6.50 per 100; \$59 per 1,000.



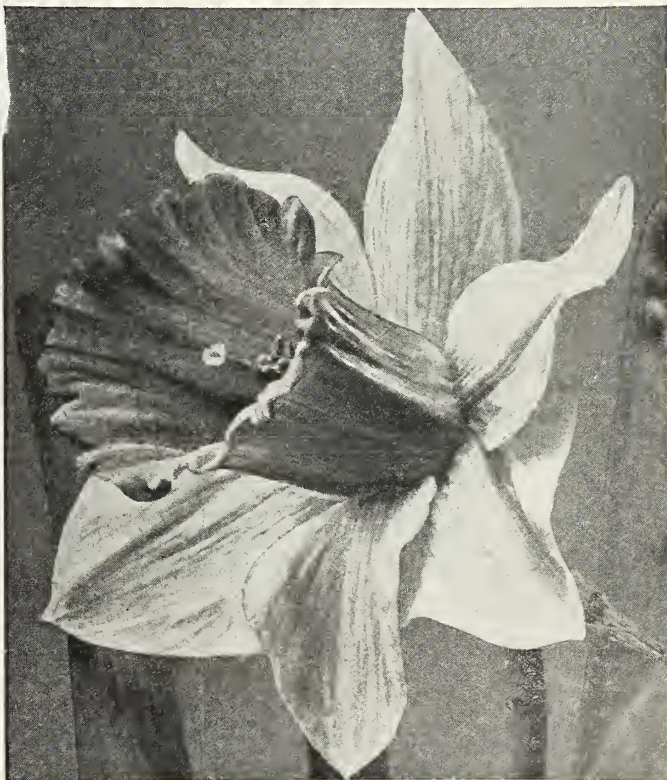
Narcissus, Empress.

Narcissus, Emperor

This is the largest and finest deep yellow trumpet-flowered Daffodil in cultivation, and is really superb, both in foliage and flower. The trumpet is immense and the overlapping petals measure three to three and a half inches across. It is one of the finest for cutting as it has strong stems and foliage which add to its beauty. Very desirable for bedding and is unequalled for growing in pots. A few years ago it was selling at \$25 per hundred, but a contract made in Holland this year enables us to offer enormous bulbs, which often bring four and five splendid flowers each, at the following prices: **\$1.10 per 12; \$8.00 per 100; \$75.00 per 1,000.** First-size, 90c per 12; \$6.50 per 100; \$60 per 1,000.

Special Offer of Golden Spur Narcissi

This is one of the most valuable of the Trumpet Narcissi, with magnificent deep yellow trumpet with brim expanding like Maximus, and large, spreading, full, deep yellow petals. It is free-flowering and splendid both for house culture and outdoors, and is one of the most desirable varieties for naturalizing. By contracting for 150,000 bulbs of this variety, we are enabled to offer them at the following prices, which are less than half the prices usually asked. **Large, selected bulbs, 90c per 12; \$6.50 per 100; \$58 per 1,000.**



Narcissus, Emperor.



Narcissus, Golden Spur.

Narcissi

	Per 12	100	1000
Barrii Conspicuous. Broad primrose petals and elegantly expanded crown, heavily stained orange-scarlet; extra fine	\$0.70	\$5.00	\$43.00
Lucifer (Incomparabilis). Large, white perianth; cup intense, glowing orange-red; brilliant flower; distinct.	1.00	7.00	
Incomparabilis, Sir Watkin (The Welsh Giant Daffodil). Very large petals of a rich sulphur-yellow; large yellow cup, tinged with orange; immense flowers, sometimes 5½ inches across. One of the very finest.			
Monster	1.15	8.00	72.00
Jonquils, Campernelle. Yellow; sweet scented.....	.70	5.00	43.00
Jonquils, Campernelle rugulosus. Large; golden yellow; larger and finer than the old Campernelles.....	.70	5.00	42.00
Jonquils, Double. Sweet-scented60	4.00	36.00
Jonquils, Single. Sweet-scented60	4.00	37.00
White Lady. (Leedsii). Exquisite flower, with broad white perianth and dainty cup of pale canary-color, prettily crinkled	1.20	8.00	
Poeticus (Pheasant's Eye). The well-known Poet's Narcissus. To insure blooming must be planted in a dry and thoroughly drained soil60	4.00	33.00
Poeticus ornatus. Improved Poeticus. Can be forced earlier, and blooms earlier outdoors.....	.60	4.00	32.00
Sulphur or Silver Phoenix. Creamy white; beautiful flower; splendid. Now that this lovely variety can be had at a low price, it should be freely used.....	.85	6.00	
Von Sion (Double Yellow Daffodil). One of the best forcing sorts; extra-large, fine bulbs, and are not mixed with the inferior greenish flowered variety usually sold80	5.50	45.00
Von Sion. Double-nosed bulbs	1.00	7.00	67.00



Paper-White Narcissi.

Narcissus Bicolor Victoria

One of the newer varieties and the best of all the Bicolors. Perianth creamy white, trumpet rich yellow, delicately perfumed. Unsurpassed for pot culture or growing outdoors in the garden or the grass. Large, erect flowers of great substance. This splendid variety has given unequalled satisfaction to thousands of customers, and we do not believe we have ever had a complaint about it. Large, selected bulbs of Bicolor Victoria, 90c per 12; \$6.50 per 100; \$52 per 1,000.

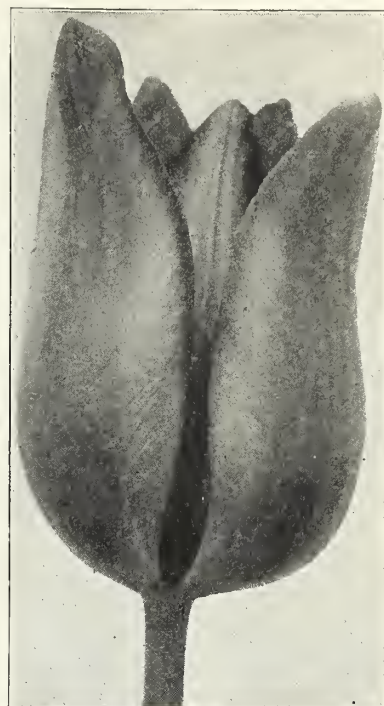
Paper-White Narcissi

Splendid for growing in pots or water, and can be had in bloom for Christmas or earlier. This is really one of the most satisfactory bulbs for growing in the house. It can be had in bloom early in December, and in succession until spring. Large clusters of pure white, fragrant flowers. Cheaper and very superior to the Chinese Sacred Lily. Extra size, Paper-White Grandiflora, 90c per 12; \$6.50 per 100. Selected, 85c per 12; \$6.00 per 100.

Single Named Tulips

The letters A, B, and C indicate the proportional earliness of the varieties, if planted outdoors. A and B may be used together for bedding purposes, but those marked C are later. The numbers preceding names show the height of growth in inches. Those marked F after the name are best for forcing in the house or greenhouse. The following are the very best varieties of Single Tulips in cultivation, and all will be found extremely effective for bedding.

	Per 12	100	1000
B 7 Albion (White Hawk). The finest pure white Tulip in cultivation.	\$0.85	\$6.00	
B 8 Chrysolora . F. Large; golden yellow; best yellow for outdoors.	.65	4.50	42.00
C 6 Cottage Maid . White; edged with rose; extra fine; lovely; splendid for bedding	.70	5.00	43.00
C 9 Couleur Cardinal . F. Cardinal-red; one of the best	1.00	7.00	
A 13 Cramoisi Brilliant . F. Bright vermilion; large flower; fine for forcing	.70	5.00	
Joost Van Vondel . Large; cherry-red and white, splendid	.65	4.50	39.00
B 9 Keizerkroon . F. Red and gold; large and fine. A grand Tulip	.75	5.50	
B 9 La Reine Maximus (Queen Victoria). F. Rosy white; one of the best	.75	5.50	
A 10 Queen of the Netherlands . F. Lovely delicate blush-pink; large, globe-shaped flowers; extra fine	.70	5.00	44.00
B 8 Rose Gris-de-Lin . F. Beautiful pink; splendid sort	.70	5.00	42.00
B 8 Yellow Prince . F. Golden-yellow; sweet-scented. Not good for outdoors	.70	5.00	
Extra-Fine Mixed Single . Extra selected	.60	3.75	32.00



Tulip, Chrysolora.



Darwin Tulips.

Darwin Tulips

A handsome May-flowering class, and quite distinct in style of growth from other late-flowering sorts. Stately in appearance, attaining a height of 18 to 30 inches, and bearing on long stems beautiful, globular flowers of remarkably heavy texture, in a large range of colors, embracing almost every conceivable tint in rose, heliotrope, claret, crimson, maroon, and other rich and rare shades. In no class of Tulips has the improvement been so marked, and they are now of the most distinguished character and are unsurpassed, either in the garden or for cutting. **They are undoubtedly the most striking and beautiful of all Tulips.**

Darwin Tulips are most valuable for permanent planting. With deep planting, 4 to 5 inches in heavy soil and 6 inches in light soil, they will continue to bloom for years, and for this reason they are very valuable for planting in shrubberies and borders.

	Per 12	100	1000
Baronne de la Tonnaye . Vivid pink	\$0.65	\$4.50	\$40.00
Clara Butt . Delicate Salmon-pink; beautiful	.65	4.50	39.00
Dream . Beautiful, delicate lilac	.70	5.00	44.00
Farncombe Sanders . Immense flower of the most brilliant scarlet; one of the best Darwins	.85	5.50	48.00
Gretchen . Delicate flesh-color; very lovely	.65	4.50	40.00
Harry Veitch . Rich, brilliant red	.75	5.50	
La Tulipe Noire . Comes nearest of all to black—dark rich purple; splendid; flowers of enormous size	.90	6.50	
Massachusetts . Light pink; large flower	.75	5.50	
Painted Lady . Milk-white, on dark stem; an effective combination	.65	4.50	
Pride of Haarlem . Carmine-pink; large	.70	5.00	
The Sultan . Almost black; forms a brilliant contrast with the white Tulips	.65	4.50	
Fine Mixed	.55	3.50	32.50
Special Mixed	.60	4.00	37.50

Breeder Tulips

Breeders, formerly listed among the Cottage Tulips, really form a distinct class by themselves, being unbroken forms of the old-time "Florists' Tulips." A long time we thought there would be no room for this class of Tulips next to the Darwins, the colors of which are so much brighter; but we have been greatly mistaken, for, more and more, the peculiar dull-toned bronze colors of the Breeders are becoming popular, and last year there was a big demand for them.

It is these odd colors which form one of the chief characteristics of the Breeders. Outside of that, most of them produce flowers with great lasting qualities and with a sweet, agreeable fragrance.

The kinds which we list, with a few exceptions, are large-flowering ones, surpassing in height and size even the largest Darwins.

	Per 12	100
Apricot. Dull, bronzy buff, shaded ruddy apricot above base	\$1.00	\$7.00
Attraction. Light bluish violet, inside glowing purple, white base90	6.50
Bronze Queen. Soft buff, inside tinged golden bronze...	.75	5.50
Cardinal Manning. Dark rosy violet75	5.50
Golden Bronze. Rich golden brown	1.25	9.00
Lucifer. Bright terra-cotta orange, enormous flowers. New	2.00	15.00
Panorama. Deep orange-red, shaded mahogany; immense flower	1.25	9.00
All colors mixed	\$.42 per 1000..	4.50

Parrot Tulips

Parrot Tulips sometimes do not bloom satisfactorily, owing to improper planting. They like a light, sandy soil, shallow planting and a sunny location.

Parrot Tulips do not receive the attention they deserve. They belong to the late- or May-flowering Tulips and have immense, attractive flowers of singular and picturesque form, and brilliant varied colors. The petals are curiously fringed or cut, and the form of the



**Tulip,
Bronze Queen.**

flower, especially before it opens, resembles the neck of a parrot. They form extravagantly showy flower-beds, are of endless variety of form and color, and should be grown in every flower-garden in quantities. The Parrot Tulips we import are from the most famous grower of these in Holland, and very superior to those usually sent out.

	Per 12	100		Per 12	100
Perfecta. Yellow and scarlet	\$.065	\$4.50	Lutea major. Yellow; very fine	\$.065	\$4.50
Cramoisi Brilliant. Scarlet; finest of all.....	.65	4.50	Fine Mixed	\$.37 per 1000	4.00

Double Named Tulips

The varieties of Double Tulips described below are the most showy bedding Tulips that can be planted, and continue for an unusually long time in perfection.

	Per 12	100	1000
B 8 Imperator Rubrorum. Brilliant scarlet; fine for forcing, and one of the grandest for bedding.....	\$.90	\$6.50	
B 6 La Candeur. Pure white; a splendid bedding kind..	.70	5.00	\$46.00
B 6 Murillo. Light pink; very early; splendid for forcing and bedding65	4.50	38.00
B 10 Rubra maxima. Early; bright red; splendid bedder, taking the place of Rex Rubrorum75	5.50	48.00
A 8 Crown of Gold. Splendid yellow; fine for forcing...	.75	5.50	
B 7 Tournesol. Red and yellow; a most showy, striking flower90	6.50	
Extra-Fine Mixed Double. Extra selected65	4.50	38.00

Cottage or May-Flowering Tulips

A Great Tulip, Gesneriana (Hortensis)

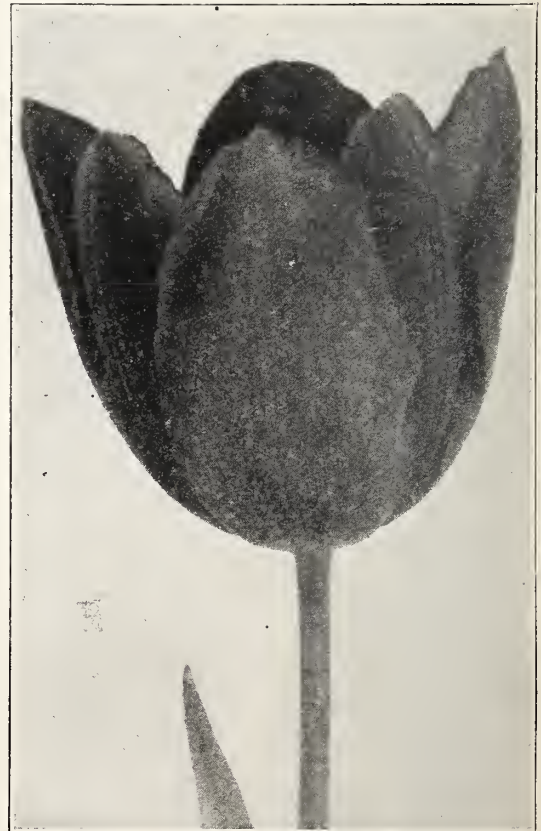
For bedding out in masses it deserves to be largely grown. Height 18 to 24 inches. Flowers of enormous size, on long, graceful stems. Color rich crimson-scarlet, with glittering blue-black center. The demand for this grand Tulip has been so great that it is very difficult to get flowering bulbs. To be sure of getting bulbs that will bloom, we pay a premium in Holland for guaranteed bulbs. This makes them higher priced, but insures that our bulbs will bloom satisfactorily. **65c per 12; \$4.50 per 100; \$38.00 per 1,000.**

Late Tulip, Blushing Bride

This is one of the largest, showiest and most beautiful Tulips in cultivation, blooming in May at the same time as Gesneriana. Beautiful rose-pink, slightly shaded white; fine form and extra large flower, held on stiff, strong stem, making it a feature in the garden. **65c per 12; \$4.50 per 100; \$38.00 per 1,000.**

Late Tulip, Bouton d'Or

Very bright, deep, rich yellow flowers, carried on tall stems. The best late yellow Tulip in cultivation, and fine for cutting. Good for planting in mass or in contrast with the darker varieties of Tulips. **65c per 12; \$4.50 per 100.**



Tulip, Gesneriana.

First Size Named Hyacinths

The following Hyacinths are a selection of the best varieties for house culture. Bulbs of the best quality and size.

	Each	Per 12	100
Baroness Van Thuyll. Early; pure white..	\$0.20	\$2.00	\$15.00
Cardinal Wiseman. Soft rose, carmine-striped; very large truss20	2.00	15.00
City of Haarlem. Pure yellow; grand spike.	.22	2.20	16.00
General Vetter. Blush-white25	2.50	18.00
Gigantea. Blush; splendid truss20	2.00	15.00
Grand Lilas. Azure-blue; perfect spike...	.20	2.00	15.00
Ida. Citron-yellow; large spike; one of the finest yellows in cultivation.....	.20	2.00	15.00
King of the Blues. Finest very dark blue..	.20	2.00	15.00
Lady Derby. Light pink; fine.....	.20	2.00	15.00
La Grandesse. Purest white; extra fine; best of all whites20	2.00	15.00
La Victoire. Brilliant red; one of the earliest and by far the best of its color. A grand novelty.20	2.00	15.00
Lord Derby. One of the very finest blues	.20	2.00	15.00
Paix de l'Europe. Very fine snow-white; very large truss20	2.00	15.00
Perle Brillante. Light blue; very large spike; fine22	2.20	16.00
Queen of the Blues. Light blue with silvery appearance; extra fine20	2.00	15.00
Rosea Maxima. Early; delicate rose; splendid22	2.20	16.00
Willette. Pearl-gray-lilac—a new color in Hyacinths; distinct and lovely22	2.20	16.00
General de Wet. (Pink sport of Grand Maitre). Lovely soft pink; very large truss well filled with fine bells. A splendid variety for forcing and bedding....	.22	2.20	16.00

Single Small Hyacinths for Forcing

These Single Hyacinths, planted on arrival from Holland, may be had in flower early in January. The bulbs and flowers of these small Hyacinths are about the same size as Roman Hyacinths, but much stronger, and the bells are larger, while they do not cost half the price of the Romans. Only those varieties which produce the fine flowers and force easily are selected for this purpose. They may be planted like Tulips in pots or boxes close together. Last season we sold large quantities, and our customers inform us that they are a great acquisition to succeed the Roman Hyacinths, blooming from January to April.

	Per 12	100	1000
Dark Red	\$0.75	\$5.50	\$45.00
Pink75	5.50	45.00
Pure White75	5.50	45.00
Cream-White75	5.50	45.00
Dark Blue75	5.50	45.00
Light Blue75	5.50	45.00
All Colors Mixed75	5.50	45.00

Single Mixed Hyacinths

	Per 12	100
Red and Dark Red	\$0.85	\$6.00
Pink85	6.00
Blush-White85	6.00
Pure White85	6.00
Dark Blue and Purple85	6.00
Light Blue85	6.00
Yellow85	6.00
All Colors, Mixed	\$.27 per 500..	.85 6.00

Mixed Hyacinths should never be used for house or greenhouse culture.

Prepared Dutch Hyacinths

ROMAN HYACINTHS, due probably to the neglect of the French bulb fields incidental to the war, have deteriorated the quality until they no longer give satisfaction. Consequently, until the quality is again satisfactory, we have concluded not to offer them. Instead we are offering Prepared Dutch Hyacinths for early forcing. These should be grown in the same manner you have been accustomed to in growing Roman Hyacinths.

	Per 12	100
White	\$1.25	\$9.00
Pink	1.25	9.00
Blue	1.25	9.00



Hyacinths.

Select Named Crocuses

The Crocus is one of the first flowers to bloom in the spring, and it is no unusual sight to see the ground covered with snow and the Crocus in bloom at the same time. They are entirely hardy, do not deteriorate, and may be left undisturbed for years. It is a good plan to plant tulip and hyacinth beds full of them, as they bloom and are out of the way before the other bulbs flower. They are also fine for naturalizing in the grass, but the tops of the Crocus must have time to ripen before the grass is cut.

All named Crocuses, 35c per 12.

	100	1000
Baron van Brunow. Dark blue	\$2.00	\$18.00
Grand Lilas. Lilac; very early and fine.....	2.00	18.00
Large Yellow. Mammoth bulbs	2.50	20.00
Madame Mina. Light blue, striped; very early; extra fine	2.00	18.00
Mont Blanc. White; best	2.00	18.00
Sir John Franklin. Large; dark purple.....	2.00	18.00
Sir Walter Scott. Finest striped.....	2.00	18.00

Chrysanthemum Maximum (Shasta Daisy type)

	Per 12	100
Alaska. A decided improvement. Flowers are 3 to 4 inches in diameter, of pure white, very free and blooms nearly all summer	\$2.00	\$12.00

Lilium Candidum

Many people think that it is necessary to plant this lovely Easter or Annunciation Lily early in September. This is not true. We have repeatedly planted them in November, and with complete success. In the Fall of 1918 we planted over 10,000 bulbs late in November. These bloomed splendidly the following June, and we sold flowers in the wholesale cut-flower market for more than double the price of the bulbs. Owing to the demoralization of the transportation systems of the world, it is no longer possible to deliver Candidum Lilies by September 1st, and people who insist on such early delivery are only depriving themselves of one of the loveliest of all garden Lilies. We have made arrangements for the earliest possible delivery, and, if these Lilies come in late, will not ship them to Northern points where it is actually too late to plant them.

Large selected bulbs 35c each.. \$3.50 \$26.00
 Mammoth bulbs 50c each.. 5.00

Our bulbs of this splendid white Lily are the finest that come to America and are much larger than those usually sent out. We can supply bulbs from both southern and northern France.

Special Offer of Superbum Lilies

We make an annual contract to have 25,000 bulbs of this grand Lily grown for us. This enables us to offer it at low prices, which makes it available for naturalizing in quantity. It is unquestionably one of the most satisfactory Lilies that can be planted either in the garden or in meadows, on the edge of woods or in any rough or wild parts of the grounds, where it will take care of itself without any attention whatever after planting. It will also thrive in wet or swampy places. It is a grand Lily, often growing over 8 feet high, and produces twenty to thirty beautiful orange-red flowers in July, when flowers are apt to be rather scarce.

Prices of extra selected bulbs, \$2 per 12; \$3.50 for 25; \$13 per 100; \$30 per 250.



Lilium Superbum.

Japanese Lilies

Transportation between Japan and United States is not yet back to its pre-war schedule and consequently, Japanese Lilies may not arrive in time for Fall planting. In this event the bulbs will be carefully packed in sand and placed in safe storage until the proper planting time in the spring, when they will be distributed.

Each Per 12 100

Auratum. (Gold-banded Lily of Japan).			
8 to 9 inches	\$0.35	\$3.50	\$25.00
9 to 11 inches50	5.00	35.00
11 to 13 inches60	6.00	
Longiflorum. Ready in November. Has large, pure white, trumpet-shaped flowers like the Bermuda Easter Lily, but is perfectly hardy.			
6 to 8 inches30	3.00	22.00
7 to 9 inches40	4.00	28.00
Speciosum Melpomene. Similar to Roseum or Rubrum; more brilliant.			
7 to 9 inches30	3.00	22.00
9 to 11 inches35	3.50	27.00
Speciosum album. White. 7 to 9 in.	.35	3.50	25.00
9 to 11 inches50	5.00	35.00
Speciosum rubrum or roseum.			
7 to 9 inches30	3.00	25.00
9 to 11 inches35	3.50	
Monsters50	5.00	

The Speciosum varieties are exceedingly beautiful and desirable and perfectly hardy and reliable.

Liatris Pycnostachya

Per 12 100

The popular name of this striking plant is Kansas Gay Feather. Nothing can be planted that will attract more attention on account of its very unusual appearance; but it is very beautiful as well as old. It blooms in midsummer and throws up long, narrow spikes of rich purple flowers, which last a long time.....

\$2.50 \$12.00



Lilium Candidum.

Native and American-Grown Lilies

October and November Delivery

	Per 12	100
Canadense flavum. Our dainty, beautiful native Lily. Graceful and charming yellow flowers...	\$2.25	\$14.00
Canadense rubrum. Red flowers.....	2.50	15.00
Canadense, Mixed	1.75	10.00
Davuricum. This beautiful Lily comes from the home of <i>L. tenuifolium</i> in Siberia. It resembles a native Philadelphia. It is of easy culture, grows 2 to 3 feet high, and blooms in umbels of three to five upright scarlet flowers, dotted black	1.75	10.00
Elegans, Fine Mixed. The Elegans Lilies bloom in June, are of easy culture, and very desirable.	2.00	12.00
Elegans, Leonard Joerg. Rich apricot, spotted ...	3.00	20.00
Hansonii. A handsome variety, flowering in June, Has bright rich yellow flowers. One of the best Lilies in cultivation. Bulbs sometimes remain dormant after planting, but will come up vigorously the next season.....	.75c each..	7.50
Henryi. A new Japanese Lily that has made a sensation in Europe. It has the same form and appearance as the <i>Speciosum</i> varieties, but the flowers are bright orange-yellow....	.75c each..	7.50
Philadelphicum. Native Lily. Orange-red, black spots	1.75	10.00
Tigrinum splendens (The well-known Single Tiger Lily). Of easiest culture and worthy of general planting on account of stately habit and fine effect in the landscape	2.25	12.00

Lilium Harrisii

(True Bermuda Easter Lily)

These Lilies are suitable for growing in greenhouse only.

	Per 12	100
Bulbs 5 to 6 inches in circumference.....	\$3.00	\$22.00
Bulbs 6 to 7 inches in circumference.....	3.50	25.00
Bulbs 7 to 9 inches in circumference.....	5.00	38.00

Lilium Formosum

Japanese Easter Lily.

An early-flowering variety of Longiflorum Lily, fine for forcing or planting outdoors. Large bulbs, 7 to 9 inches

each 50c..\$5.00

Lilium Regale

A new hardy lily with remarkably beautiful blooms. Color white, shaded pink; canary yellow center. May be used for forcing.

Each Per 12 \$1.00 \$10.00

Calla Lilies

White Calla (*Richardia aethiopica*). The White Calla, or Lily-of-the-Nile, is a well-known plant of easy culture, and in winter is one of our best window plants. To aid profuse blooming keep them dormant from the middle of June until the last of August; replot in good, rich soil, using 6- to 8-inch pot; give water, light and heat in abundance.

	Each	Per 12	100
Good flowering bulbs	\$0.25	\$2.50	\$18.00
Extra-large bulbs40	4.00	27.00



Lily-of-the-Valley.

Lily-of-the-Valley

	Per 25	100	1000
Extra-selected Berlin pips. Ready in December	\$1.60	\$6.00	\$55.00
American pips. Ready in October. For outdoor planting only	1.00	3.50	30.00
Large clumps. Ready in Dec. Each, 50c; 12, \$5.			

Freesia Purity

This charming flower is one of the most satisfactory bulbs that can be forced. It is certain to flower either in the conservatory or the house.

	Per 12	100	1000
Selected bulbs	\$0.35	\$2.50	\$20.00
Mammoth bulbs.. Extra50	3.50	30.00
Rainbow, Fardel's Strain. A wonderfully improved stock of colored Freesia, comprising a large number of beautiful shades of yellow, blue, mauve, pink, lavender, etc. The flowers are as large as the best white type, and equally as fragrant. We offer them in mixed colors only. 12, 70c; 100, \$5.00.			

Scilla

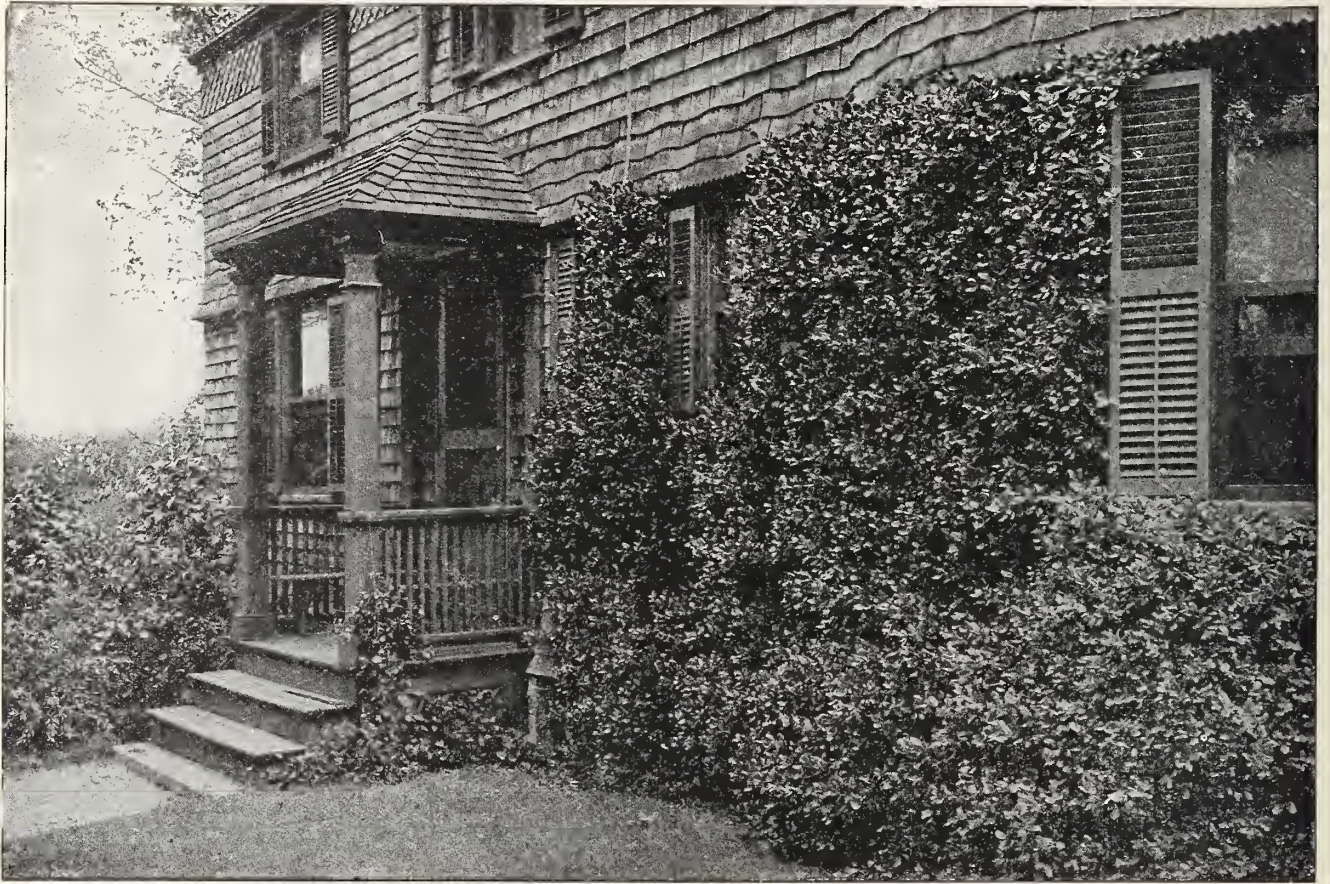
	Per 12	100	1000
Sibirica. Finest sky-blue. One of the loveliest Spring flowers; it has a color almost as deep as the sky itself. It is quite hardy and flowers outdoors at the same time as Snowdrops, in front of which it has a charming effect. It is fine for planting in the grass	\$0.75	\$5.50	\$43.00

Collections for the House

For the inexperienced we have made up collections of bulbs suitable for house culture. These collections contain the very best varieties for forcing and can be bought with every confidence. These collections are standard collections, and each collection is exactly like every other collection. If a different selection is wanted, this selection must be made out by the customer. If a higher priced collection is needed (above \$20.00), we will be glad to extend our service, and in the making of the collection follow the suggestions made by the customer or, if entirely left to us, use our best judgment. All that is necessary for us to know is the price limit.

Collection J. 80 Assorted bulbs of suitable varieties	\$5.00
Collection K. 132 Assorted bulbs of suitable varieties	10.00
Collection L. 217 Assorted bulbs of suitable varieties	15.00
Collection M. 276 Assorted bulbs of suitable varieties	20.00

In the more expensive collections, proportionately more of the more expensive bulbs are used.



Euonymus Radicans Vegetus.

The Best Evergreen Vine for America— *Euonymus radicans vegetus*

"Is the Ivy the best vine in the world? Doubtless every Englishman will cry 'Yes!' because the European or English Ivy (*Hedera Helix*) is the oldest evergreen vine in cultivation and has made the deepest impression in literature, art, and history. But if your standard is merit, not associations, there is another vine which seems to me inherently better, viz., the Climbing *Euonymus*, or, as I now propose to call it, the 'Evergreen Bittersweet.' True, the form of its leaf is not unique like that of ivy, but it has one overwhelming advantage in its gorgeous red berries, which are resplendent all winter against a noble background of evergreen foliage. And in many other ways it has greater value than ivy, even in regions where the ivy is hardy.

"The accompanying picture gives but a faint hint of the fivefold glories of the Evergreen Bittersweet. In the first place, it is evergreen, and therefore has an obvious advantage over deciduous vines in being beautiful 365 days of the year, instead of two weeks or seven months.

"Secondly, it is very accommodating as to soils, climate, exposures; is easy to grow; and will trail over the ground or climb to the noble height of 30 feet.

"Thirdly, it has immense advantage over ivy, in being much hardier, growing 20 feet high in New England where ivy can be grown only as a ground-cover.

"Fourthly, its superb red fruits, which closely resemble those of our common wild bittersweet, seem divinely appointed to redeem our American winters from their bleak, ugly and cheerless moods.

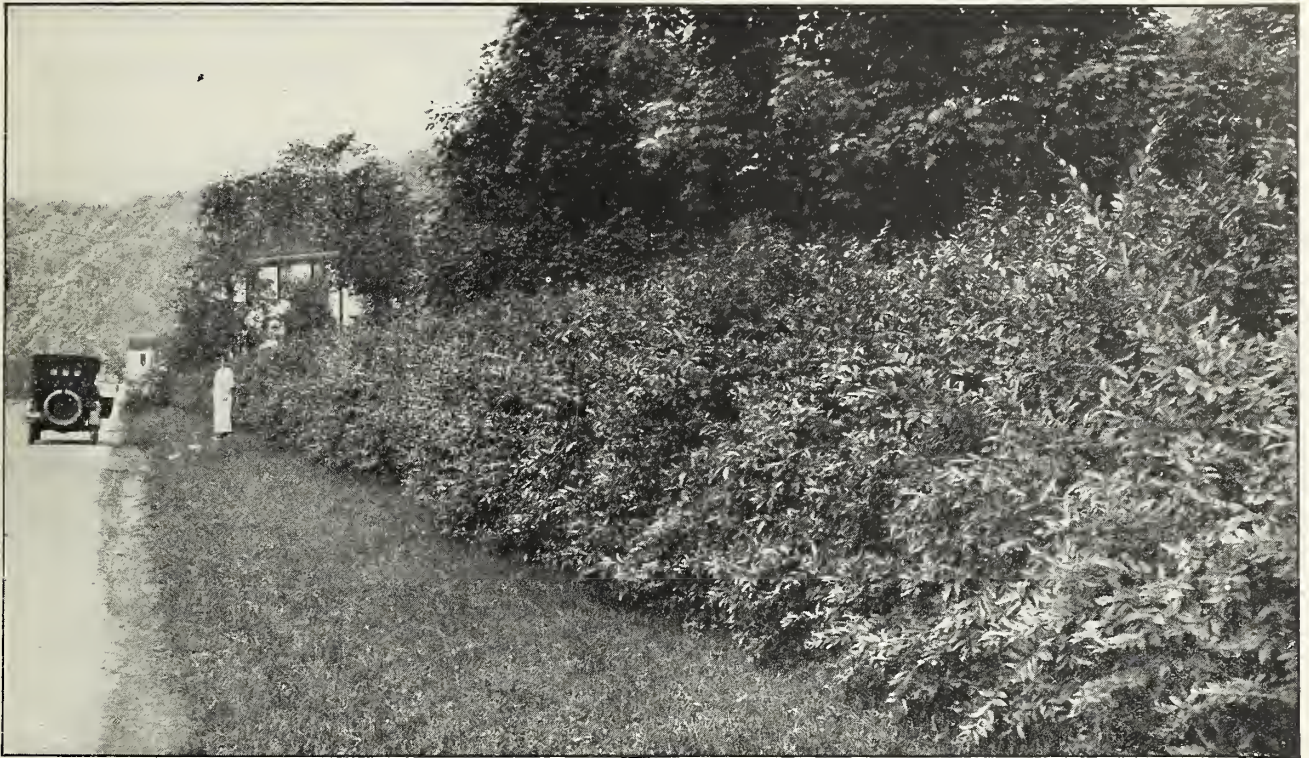
"And, fifthly, it promises to develop a strong American character, becoming universal and dear to the American heart. If I had a million dollars to spare I should like to plant an Evergreen Bittersweet against every stone, brick and concrete wall in America. The effect would be electrical for it would add 100 per cent to the beauty of America and it would only be anticipating by a hundred years what will surely happen, for it is hardly possible that the world holds any plant with greater power to transform a house into a home. As in England every home and every church is enriched, dignified and ennobled by ivy, so every American home will come to be connected so closely with the Evergreen Bittersweet that it will be impossible to think of one without the other."—WILHELM MILLER, in the Garden Magazine, November, 1912.

We have known for several years of the great merit of the vine, *Euonymus radicans vegetus*, so enthusiastically described by Professor Miller, and have been steadily getting up a large stock of it, and now have several thousand plants. It is a sport from *Euonymus radicans*, but absolutely distinct from that vine.

Planted in rows and kept sheared, this vine makes a splendid evergreen hedge. It is also a splendid ground-cover plant for either sun or shade.

Perfectly hardy, but when planted in the fall should be protected with a mulching or 3 inches of stable manure, being careful not to cover the evergreen foliage. Very slow-growing at first, but when well established grows with great vigor.

Strong pot-plants, 50c each; \$5.00 per 12; \$40.00 per 100.



Regel's Privet Hedge, Slightly Trimmed.

The Best Hedges

Amoor River Privet

A more slender grower than the common Privet. Hardier than the California while the foliage is finer and of a lighter green, and retains better color during the winter. It makes a more satisfactory hedge than the California, and should be more extensively planted. We offer the true variety. The Privet generally sold in the South for Amoor River is *Ligustrum chinense*, and is not hardy in the north. 2-3 feet, \$4.00 per 12; \$25 per 100.

Regel's Privet

Regel's Privet, *Ligustrum Regelianum*, is not only the best Privet, but is also one of the very best shrubs for many purposes that we know of. Is perfectly hardy, of most beautiful, pendulous habit and splendid foliage. It is of vigorous growth and will thrive in either sun or shade. In good soil it will attain a height of 8 to 10 feet, and spread almost as great. It is fine as a specimen or for planting in masses in shrubbery, but its greatest value is for hedging. As a hedge-plant it is unsurpassed. It can be kept closely trimmed or trimmed but little, when it will preserve its natural drooping character which is most graceful and beautiful. A partially trimmed hedge of this Privet on the grounds of Mr. Clarence Byrnes, Sewickly, Pa., we think one of the handsomest hedges we have ever seen. On account of its spreading habit this Privet makes a hedge solid to the ground whether it is sheared hard or not. We can not understand why people continue to plant California Privet, which is inferior in every respect and not reliably hardy. Regel's Privet is somewhat higher priced, but on

account of its spreading habit it requires only half the quantity that it does of the California Privet to plant a hedge. For a hedge, plant Regel's Privet 18 inches apart in a single row. \$4 per 12; \$30 per 100.

Japanese Barberry

We are frequently asked to recommend the best shrub for hedge planting, and, after many years' experience, we are decidedly of the opinion that the **Japanese Barberry**, *Berberis Thunbergii*, is the best hedge-plant in existence, and either as an ornamental, defensive, trimmed or untrimmed hedge, it is unsurpassed. As an ornamental hedge it is beautiful throughout the year, its abundant crop of bright red berries making it even more attractive in the winter than in the summer. Its compact growth and thorny branches make a defensive hedge that will turn cattle after five years' growth. As an untrimmed hedge, it requires no attention except an occasional cutting of a few straggling branches. The natural growth is so dense and even that it forms a perfect hedge without shearing, but if a formal hedge is desired, by shearing, it can be made as even as a stone wall. The *Berberis* is absolutely hardy, of the easiest culture, and will grow in any soil or situation. It will stand considerable shade and can be grown under trees if not planted too close to the trunks. It is of slow, compact growth, but will eventually attain a height of 5 or 6 feet. It is one of the very best of shrubs for general planting. For a hedge, plant a single row, 18 inches apart in the row. We have a very large stock of fine plants. 18-24 inch plants, \$4 per 12; \$30 per 100.



Salix Salamonii. From a Photograph Taken Ten Years After Planting.

Salix Salamonii

This is a variety of the Weeping Willow, but not nearly so pendulous as the common form, and we believe it to be the fastest-growing tree in the world, not excepting the eucalyptus, so much planted in California. We cut down one of these Willows in our nursery when it was seven years old, and it measured 13 inches

through the trunk. It makes a very good-looking tree, as will be seen by the illustration above, and has the good qualities of leafing out very early in the spring, and of holding its foliage until late in the fall. This tree starts into growth quite early and should be planted as early as possible in the spring.

One-year-old trees, 75c each; \$8.00 per 12; \$45.00 per 100. Two-year-old trees, \$1.25 each; \$13.00 per 12; \$85.00 per 100. Trees older than this are really too large to handle.

Tall English Delphiniums

We are tempted to say that the Improved English Delphiniums are the most beautiful hardy plants in cultivation, but we are also tempted to say this of a score of other things, and, of course, it is impossible to say which is the most beautiful of hardy plants, for they have such an immense variety of beauty that the wonder grows that people continue to plant, by the million, bedding plants which have little or no beauty, are an annual expense, and cost quite as much as hardy plants whose first cost is their only cost and which increase in size, in beauty, and often in quantity, year after year. These Delphiniums may not be the most beautiful hardy plants, but they are among the most beautiful, and nothing can be more distinct and satisfactory. They are stately and picturesque, some varieties growing 8 feet high in rich soil; they have immense spikes of most beautiful flowers of every imaginable shade of blue, and their season is a long one.

Culture of Delphiniums

The culture of Delphiniums is exceedingly simple, and the results out of all proportion to the slight amount of care necessary. They thrive in almost any position, and may be planted at any time of the year, provided that in summer the plants are not too forward, and that they be well watered if the weather be dry. The soil may be a rich, friable loam, which suits them finely; but any soil, even hot and sandy, if well watered and manured, will give excellent results. Dig deeply,—trenching is better,—add plenty of well-rotted manure, and plant about 2½ feet apart. Placed in lines, as a background to a border, or in groups of, say, three plants at intervals, the effect of the Delphinium is exceedingly fine. They look well in beds, also, arranged at the same distance apart each way. They are grand grown in masses of large groups of separate colors, and may be associated with shrubs with great advantage, succeeding well in shrubberies because of their robustness. A succession of flowers may be expected from spring to early autumn, especially if the spikes which have done flowering early be cut down to the ground; fresh growth will then be produced which will give blossom. Copious watering in summer will be attended by increased size of spike and flower; in fact, in seasons of prolonged drought, water is absolutely a necessity on many soils if the varieties are to exhibit themselves in their true size and beauty of flower and spike. Top-dressing is greatly recommended on certain soils, instead of the bare surface of the ground being left exposed to the sun. Some of the neater dwarf alpine and other hardy plants may be utilized to plant between and around Delphiniums. As we have intimated, any garden soil suits the Delphiniums; it is, however, necessary to secure sorts such as are offered below in order to obtain an effect superior to that afforded by the old smaller-flowered varieties.

Special Offer Improved English Delphiniums

I want everyone who receives this list to try these improved English Delphiniums, and to that end offer them at extremely low prices. I guarantee that they will give unqualified satisfaction in every instance and will be a revelation of beauty to most people.

Fine Mixed English , grown from seed of famous named sorts	12	100
	\$2.50	\$15.00
Selected Varieties , selected from thousands of seedlings grown from choicest named sorts.....	3.50	23.00
Extra-selected Varieties	50c each	5.00



Delphinium.

Standard Sorts

- Belladonna.** The freest and most continuous blooming of all, never being out of flower from the end of June until cut down by hard frost. The clear turquoise-blue of its flowers is not equaled for delicacy and beauty by any other flower. **25c each; \$2.50 per 12; \$15.00 per 100.**
- Bellamosa.** A dark blue of the type of Belladonna with the color of the old Formosum variety, but not liable to mildew like the latter and of stronger growth. **\$2.50 per 12; \$15.00 per 100.**
- Chinense.** A very pretty variety, with fine, feathery foliage and intense gentian-blue flowers in open panicles. **\$2.00 per 12; \$12.00 per 100.**
- Chinense album.** A pure white form of the above. **\$2.00 per 12; \$12.00 per 100.**
- Bellamosa (Improved Formosum).** The old favorite dark blue with white center; 3 to 4 feet high. Very vigorous, free-flowering, and one of the best. **\$2.50 per 12; \$15.00 per 100.**

Hardy Perennial Phloxes

The beauty and usefulness of these grand border plants give them a deservedly first place among hardy plants. For cutting, their large trusses go a long way in floral decoration. In color they range from pure white to the richest crimson and purple, and from soft rose and salmon to bright coral-red, all having a delicate fragrance. **Perennial Phloxes** succeed in almost any soil enriched with manure, but are

much benefited by a mulching of decomposed manure in spring, and in hot weather an occasional soaking of water. If the first spikes of bloom are removed as soon as over, and the plants given a good soaking of water, they will produce a second supply of flowers, thus continuing the display until late in autumn. These later blooms are often finer than the first.

Field-grown plants, 30c each; \$2.50 per 12; \$15.00 per 100, except where noted.

Albion. Pure white, with a faint red eye.

Athis. Salmon; a splendid tall variety.

Baron van Dedem. Intense scarlet or red; individual flowers and trusses are very large. One of the best varieties.

Champs Elysees. Extra-large trusses of dark purple flowers.

Duguesclin. Deep rose; lilac shading on edge.

Eclairer. Purple-carmine blooms with a white center.

Elizabeth Campbell. A splendid variety for mass planting. Flowers are light salmon-pink with dark red eye. The best variety introduced in years, both in color of bloom and habit of plant. 35c each; \$3.50 per 12.

F. B. Waldeck. Splendid pure white.

Frau Antoine Buchner. Pure white, or slightly suffused with pink.

Kossuth. Deep rose, maroon center.

Frau Buchner. One of the prettiest delicate shades of mauve with crimson eye.

Independence. Vigorous dwarf white.

Mrs. Jenkins. One of the earliest pure white varieties.

Miss Lingard. Early flowering; pure white blooms with a faint lilac eye. Splendid for mass planting, as it will bloom in June and again in September if the old flowers are cut. Not infested with red spider.

N. Smith. Dark crimson.

Obergartner Wittig. Light rose, center lighter, with carmine eye.

Pearl. Pure white; a late blooming sort.

Prof. Schliemann. Lilac-rose with carmine eye.

Rhineland. Salmon-pink; both flower and truss are immense in size, and the color is intensified by a brilliant carmine eye.

Rynstrom. Rose-pink; flowers and trusses extremely large; possibly the finest Phlox of this color.

Riverton Jewel. Rose, with brilliant carmine or red eye.

R. P. Struthers. Rose-carmine or salmon with crimson eye.

Rosenberg. Bright reddish violet with blood-red eye; individual flowers as large as a silver dollar.

W. C. Egan. Extra-fine variety; delicate lilac with solferino eye; 7 to 8 inches across.

Widar. Reddish purple with large white center.

Mixed Varieties. Contains many of the preceding named varieties, but of course they are sent out unlabeled. 20c each; \$2.00 per 12; \$12.00 per 100.



Phlox, Mrs. Jenkins.



A Border of Avalanche Peonies.

Peonies

Few flowers have become more popular in recent years than the Peonies. Even the common old-fashioned sorts possess unusual beauty and make excellent flowers for cutting because of their large blooms and vivid colors. The varieties which have been introduced in the last thirty years are much superior to those previously known. Some of them will attain a diameter of 8 inches or more, while in beauty of form and exquisite coloring they easily surpass any other perennial. Peonies possess another advantage which is important; they require no special care or attention—**anyone can grow them successfully.** We have long appreciated their possibilities, and our present collection

includes a large number of varieties which we have succeeded in gathering together only after years of effort.

Well-developed root clusters, if planted in August or September, will bloom the following season. We do not offer large undivided clumps as we find that they do not justify their cost. It must be remembered that Peonies seldom bloom satisfactorily the first season after planting; many of the finest double sorts will produce single flowers at this time. The second season after planting it is difficult to tell medium-sized plants from the large undivided clumps sometimes sold; for that reason ordinary size plants produce typical blooms just as soon as huge and expensive root clusters, yet cost much less.

	Each	Per 12		Each	Per 12
Avalanche. Large flowers of perfect shape; milk-white, with a creamy center having a few carmine stripes; late and very free-flowering; splendid habit. A variety of great distinction and beauty	\$1.00	\$10.00	Duke of Wellington. Quite large, sulphury white blooms, of medium fragrance. Makes a strong, vigorous growth and blooms freely	\$.50	\$5.00
Anemonæflora rubra. Medium-sized blooms of brilliant red, with dark crimson carpels. Semi-double. Midseason	.60	6.00	Delachei. Large violet-crimson blooms perfectly cup-shaped. Unusually good sort. Late mid-season	.60	6.00
Baroness Schroeder. Flesh white fading to milk-white; fragrant; large size	2.00		Edulis Alba. White, center cream white flecked crimson	.40	4.00
Couronne d'Or. Pure white blooms with a circle of yellow stamens about the center tuft of petals, which are tipped with carmine. They are quite large and flat, with petals of uniform width throughout. This is one of the best white varieties and an excellent sort for cutting	.75	7.00	Edulis Superba. This variety is largely grown to supply the demand for Decoration Day flowers; the blooms are bright, deep pink, with lighter shadings. The plant makes a strong, upright growth, and produces blooms very freely. One of the best low-priced sorts	.75	7.50
Duchesse de Nemours. A beautiful, fragrant, cup-shaped flower, white and sulphur-white. Blooms very freely	.60	6.00	Felix Crousse. Extra-large blooms; quite fragrant. One of the most brilliant red varieties. Strong, vigorous plants	1.25	12.00
			Floral Treasure. Soft rose, ligules buff, with tufts of rose petals in center; carried on long stems; distinct and fine; fragrant	.60	6.00



Livingstone.

	Each	Per 12
Festiva. Creamy white blooms, with crimson flecks in the center. Flowers are nearly as large as Festiva Maxima, but the plant is of dwarf habit	\$0.50	\$5.00
Festiva Maxima. This is probably the best of the low-priced varieties. It produces extremely large white flowers, flecked with crimson in the center. The plant makes a tall, strong growth, and produces its blooms early in the season. Some of the most recently introduced varieties, which sell for \$50 or more, are in no way superior to this sort75	7.00
Francis Ortegat. Large, handsome flowers of deep crimson, shaded with amaranth; brilliant yellow anthers75	7.00
Gloire de Charles Gombault. A pleasing combination of light rose and creamy white. The blooms are borne in midseason. Quite long, strong stems make it a good sort for cutting.....	1.00	10.00
Gubretae. Single blooms, with large carmine petals, which contrast strongly with the bright yellow stamens40	4.00
Grandiflora rosea. Blooms are rather flat, but quite large, with delicate fragrance. The color is an extremely light rose, almost white. Late....	.60	6.00
John C. Slack. Broad pink guard petals. Petaloids which vary; dainty and charming.....	1.50	
L. Van Houtte. Large flower of lively violet red; very brilliant.60	6.00
Livingstone. Pale lilac-rose, turning to silver at the tips of the petals. Very large, compact flowers75	7.50
Lady Bramwell. Pale lilac-rose, the center petals creamy white at the tips, and sometimes flecked with crimson. Grows vigorously and blooms freely. Early midseason60	6.00
La Tulipe. Large lilac-white blooms, with crimson stripings on the outer petals. Fragrant. Late midseason75	7.50
Magnifica. Light pink blooms, quite fragrant. Dwarf habit. Late60	6.00
Marie Lemoine. This is a very popular commercial variety. It produces large, compact flowers, with crimson centers, occasionally tipped with carmine; fragrant. Plants are of medium height and produce the blooms on extra strong stems. Very late75	7.50

	Each	Per 12
Mme. Calot. Light pink, rose-type, with center slightly darker. Medium fragrance. Strong grower	\$0.75	\$7.50
Marguerite Gerard. Lovely light pink; one of the most exquisitely beautiful Peonies in cultivation.	1.00	10.00
Mme. Coste. A good early sort; light pink guard petals and crimson center60	6.00
Mme. Crousse. White, tinted pink, center carmine; bordered very lovely	1.25	
Mme. de Verneville. Very full, large blooms, pure white center, tinted with pink when first opening, later fading to pure white, although it is frequently flecked with carmine. Slightly fragrant. A variety which should be in every garden60	6.00
Mons. Jules Elie. An extra-fine early sort of medium fragrance. The blooms are pale lilac-rose, shading to rich amber at the base. The plants make a strong growth, and are generally of medium size. One of the most popular varieties... ..	2.00	
Officinalis. A single white sort of great beauty... ..	.50	5.00
Officinalis mutabilis alba. The blooms are light pink on opening, gradually changing to white.....	.75	7.50
Old Double Crimson. A good sort for massing where a great blanket of color is desired. Blooms quite early	1.00	10.00
Petite Renee. Vary large, semi-double type. The light magenta blooms are borne freely on plants of medium height. Midseason	1.50	
Prince d'Arensborg. Medium-sized, full double, dark red flowers. Midseason60	6.00
Peace Offering. An attractive, semi-double variety, with light guard petals; light buff center..	1.50	
Queen Victoria. Large, globular bloom, with milk-white guards and cream-white center. Mid-season50	5.00
Rosea elegans. A splendid pale lilac-rose bloom, with a delicate cream-white collar.....	.50	5.00
Rosea plena superba. Full double blooms; soft pink, or rose	1.00	10.00
Rubra superba. Deep crimson blossoms, large and compact. The best very late crimson variety....	.75	7.50
Mixed, all colors35	3.50



Mme. de Verneville.

German Iris

Probably the Japanese Iris rank first in beauty, but they cannot approach in popularity the German Iris. A great number of new varieties have been introduced in the last decade and many of them are far superior to the older sorts in beauty and size of flowers. Some of these recent introductions, however, are extremely delicate and refuse to bloom except when conditions are "just so." These have been carefully eliminated from our list. The German Irises in our collection may be raised with success by anyone. Give them a good sunny situation and plant the tubers so that they are only about half buried. In the descriptions which follow, the upright petals are referred to as "Standards," while those which droop are known as "Falls."

Per 12 100

Aurea. Both standards and falls are rich chrome-yellow. The blooms are large and perfect in form.....	50c each..	\$5.00	
Canary Bird. The general effect of the bloom is pale yellow; both standards and falls are about the same color.....	1.50		10.00
Caprice. Rosy red standards; falls of a deeper red. A large handsome bloom. 2 feet	2.50		15.00
Don Carlos. Blue standards; falls velvety reddish purple	1.50		10.00
Florentina. Sometimes known as Silver King. Fragrant, creamy white blooms, slightly flushed with lavender, produced early in the season. 2 feet	2.00		12.00
Florentina purpurea. Blue standards and velvety purple falls, together with a bright yellow beard, make this bloom very attractive	2.00		12.00
Gracchus. Crimson falls veined with white, standards yellow. An extra-fine early sort. 18 inches	2.50		15.00
Halfdan. Both standards and falls are creamy white; the blooms are quite large	2.00		12.00
Her Majesty. Standards and falls rose-pink. A variety of great distinction and beauty. 22 inches	35c each..	3.50	
Ingeborg. Pure white blooms of great size. The petals of this variety are 2 inches wide. An extremely beautiful variety... 1.50			10.00
Jeanne d'Arc. A splendid pure white sort. 50c each		\$5.00	
Lohengrin. Standards and falls are soft cattleya-rose; extremely large blooms	35c each..	3.50	
Loreley. Falls are deep blue, bordered with crimson; standards are light yellow.....	35c each..	3.50	
Mme. Chereau. White, delicately frilled with a border of clear blue. A most beautiful variety. 32 inches	1.50		10.00
Midnight. Rich, deep purple; the finest of its color. Excellent for cutting	2.00		12.00
Mrs. Horace Darwin. General effect white, although the upper parts of the falls are veined with gold and violet; golden beard. 24 inches	2.25		14.00
Mrs. Alan Gray. Both standards and falls are a delicate pale rose-mauve	2.50		15.00
Nibelungen. Standards fawn-yellow; falls violet-purple. Extremely large bloom.....	50c each..	5.00	
Pallida Dalmatica. Lavender standards and clear deep lavender falls. Most effective when planted in masses; an excellent variety for cut flowers	35c each..	3.50	
Princess Victoria Louise. Sulphury yellow standards; falls plum color, bordered with cream... ..	35c each..	3.50	
Queen of May. Soft rose-lilac, almost pink. 32 inches	2.50		15.00
Rhein Nix. White standards, falls violet-blue, with white border. Large blooms on tall stems.	50c each..	5.00	
Walhalla. Both standards and falls are blue and purple. Strong grower and free-bloomer.....	2.00		13.00



Clump of German Iris.

Unnamed Mixed Varieties. A great number of different sorts of various colors and styles. Excellent for large plantings and landscape work... 1.50		10.00
--	--	-------

Per 12 100

Siberian Iris

Narrow, grassy foliage and tall, flat stems make the Irises of this class the most delicate and ornamental of the whole family. They are especially desirable for borders, or for marking lines, etc., their slender graceful foliage and delicately poised blossoms holding a distinctive beauty that is peculiar to them. They are very persistent and will thrive even in blue-grass sod. Coming into bloom just at the close of the bearded Iris season, they flower quite freely and are extensively used for naturalizing and water-side plantings.

Per 12 100

Alba. White shading to yellow at the base of the petals	\$2.00	\$12.00
Distinction. Blue standards; white falls veined blue	2.25	14.00
Orientalis. Sometimes known as Iris sanguinea. Very brilliant blue flowers; the buds are enclosed in a crimson spathe and are decidedly ornamental	2.00	13.00
Orientalis, Blue King. Handsome, clear blue flowers with attractive markings at the base.....	2.00	13.00
Orientalis, Snow Queen. Large ivory-white flowers produced in great abundance	2.50	15.00
Orientalis superba. Large violet-blue flowers; foliage extends almost to the height of the flowers	2.00	13.00

Japanese Iris

Although Japanese Irises have been grown in this country for forty to fifty years, they have never attained the popularity of the German type. One reason for this is that they have been a little more expensive, and certainly an additional reason is that their beauty has never been adequately shown nor fully appreciated. Without doubt, the Japanese Irises are the most gorgeous of all the perennials.

The Irises of this class have no standards; the petals are borne at right angles to the stalk and droop most attractively at the tips of the petals. They will grow in any ordinary garden soil, but amply repay efforts to suit their dispositions. Extra-good soil, and daily watering for a month before and during the blooming season will produce truly remarkable blooms. Some of them have been known to attain a diameter of 12 inches. Be sure to make your Iris bed in as sunny a spot as possible.

Our original importation of Japanese Irises has been added to each year, as new sorts have originated. We think that our present collection contains the finest and most beautiful varieties in the world. As most of the original Japanese names are impossible to remember and even more impossible to pronounce, we have re-named many of the varieties in our list.

Per 12 100

- Alice Kiernan** (Undine; Ondine). A single white variety with light blue shadings. Unusually large and graceful... 60c each.. \$6.00
- Ccerulea.** (7). Double. Lavender-blue, delicate coloring; large and distinct..... 35c each.. 3.50
- Frate.** A silvery white double variety, veined and shaded with lilac, and with a pure lilac center 35c each.. 3.50 20.00
- Gigantea.** (53). Bluish purple, lightly striped white; vigorous grower and free bloomer..... 35c each.. 3.50



Siberian Iris (See page 17).

Japanese Iris.

	Per 12	100
H. Von Siebold. Center pure white, with violet red border.....		
..... 35c each..	\$3.50	\$20.00
Hermione. (103). Single. White, maroon center, petals penciled with blue	25c each..	2.50 15.00
Katherine. (2). Double white, striped and suffused with magenta, yellow base	35c each..	3.50 20.00
Mahogany. Dark red, shaded with maroon, quite double. 60c each..	6.00	
Mont Blanc. (1). Double. Pure white; large and fine. One of the finest of the white varieties.....	35c each..	3.50 20.00
Mrs. Higginson. Single bright reddish maroon, center white....	50c each..	5.00
Prince Camille de Rohan. Light purple shaded with violet; center deep purple. Quite double.	40c each..	4.00 28.00
Pyramid. Double. Violet-purple veined, white in center of each petal.	25c each..	2.50 15.00
Red Riding Hood. Amaranth, with white veins and white shadings.	35c each..	3.50 20.00
T. S. Ware. Reddish violet with white pencilings; center is white and slightly tinted with crimson.	35c each..	3.50 20.00
Venus. A pure white single variety of great beauty....	35c each..	3.50 25.00
Victor. White, veined with purple. The center is violet-purple. Quite double	35c each..	3.50 20.00
Wm. F. Dreer. (52). Double. White, penciled with lavender... ..	3.50	20.00
W. J. Matheson. (3). Double. Reddish plum, base of petals yellow; large and fine	3.50	20.00
All Colors, Mixed	2.00	13.00



Lilacs.

New Lilacs on Their Own Roots

Of late years there has been a multitude of new varieties of Lilacs grown, and some of them have very great beauty; but unfortunately, almost all the stock offered, both in this country and Europe, has been budded on privet and is practically worthless, for Lilacs grown on this are certain to die in a few years. Nurserymen bud Lilacs on privet because they can produce a large stock quickly and inexpensively; but one Lilac on its own roots is worth a score of budded plants.

Ten years ago we bought all the available stock of choice named Lilacs on their own roots in Europe, and since then we have been both growing and buying until we have a very large and fine stock, and the only stock of named Lilacs grown on their own roots in America. On account of their starting into growth so early in spring, Lilacs do best when planted in the fall.

Strong plants, except where noted, \$1.75 each; \$17.00 per doz.

Charles Joly. Double; blackish-red; distinct and extra fine.

Madam Antoine Buchner. Clusters often more than a foot in length; buds carmine-pink, flowers tender rose tinted malva; late flowering.

Miss Ellen Willmot. A splendid new double white, small plants.

Pres. Loubert. Large purple flowers with red buds.

Pres. Poincare. Double enormous compact head of flowers, claret-mauve with purple buds. Splendid.

Thunberg. Double, compact flowers, deep mauve.

Vestali. Enormous panicles, large flowers perfectly shaped. Pure white.

Victor Lemoine. Double, malva lilac.

Alphonse Lavallo. Double; clear lilac.

Madame Lemoine. Superb; double, white. \$1.50 each.

Marie Legraye. Large panicles of white flowers. The best white lilac. \$1.25 each.

Michael Buchner. Dwarf plant; very double; pale lilac.

Pres. Carnot. Double, lilac tint, marked in center with white; extra large, fine truss.

Pres. Grevy. Double, vinous violet.

Villosa Lutea. A late-flowering species, blooming a month later than other varieties, with cream-colored flowers; extremely free-flowering and effective. Makes a large, splendid specimen. \$1.00 each

Lamartine. Large panicles of mauve-rose flowers. Very early.

Jeanne d'Arc. Double, large flowered. White.

Charles X. Large shining leaves, and great trusses of reddish purple flowers.

Vivian Morel. Extra long spikes of large double flowers of light bluish-lilac, with white center.

Violetta. Huge panicles of violet flowers.

Some Notable Hardy Plants

Clematis Paniculata

This handsome hardy climber is one of the choicest and most satisfactory climbing flowering plants we know. The plant is of strong, rapid growth, with small, dense, cheerful green foliage, giving it a grace and elegance possessed by no other hardy climber, and, even did it not flower at all, it would be one of the most desirable vines. The flowers appear in the greatest profusion during August and continue until late in the fall, are of white color and most deliciously fragrant. The plant succeeds in almost any position; not only is it well adapted to run up all kinds of supports, but it is just as useful for planting among rock-work, sloping banks, or, in fact, in any position where a graceful vine is desired.

	Each	Per 12	100
2-year-old	\$0.35	\$3.50	\$25.00
3-year-old, extra strong50	5.00	

Pentstemon Barbatus Torreyi (Beard Tongue)

An excellent variety of this American plant that is used chiefly for garden borders. The flowers, which are scarlet or crimson and orange, are produced freely in July and August. **\$2.25 per 12; \$14.00 per 100.**

Hardy English Primrose (Primula Vulgaris)

One of the loveliest sights in all England are the hardy primroses in bloom in orchard and meadows in early spring. In many cases the ground is carpeted with their lovely canary-yellow flowers which are delightfully fragrant. They are equally hardy here, and nothing can be more delightful, either for naturalizing in orchard, meadow, along a brook or planting in borders or along the edge of a shrubbery border. **\$2.00 per 12; \$13.00 per 100.**



Clematis Paniculata.



Stokesia Cyanea.

Stokesia Cyanea

(The Cornflower, or Stokes' Aster)

A most charming and beautiful native hardy plant. The plant grows from 18 to 24 inches high, bearing freely, from early in July until late in October, its handsome lavender-blue centaurea-like blossoms, which measure from 4 to 5 inches across. It is of the easiest culture, succeeding in any open sunny position, and not only it is desirable as a single plant in the hardy border, but it can also be used with fine effect in masses or beds of any size. **25c each; \$2.50 per 12; \$15.00 per 100.**

Alba. Pure white variety of above. **25c each; \$2.50 per 12; \$15.00 per 100.**

Aquilegia

All of the single, long-spurred Aquilegias, or Columbines, are extremely beautiful, and a collection of them should be a feature in every garden. Foremost among these choice plants are our native Aquilegias. If these and other choice hardy plants were as well known as bedding plants, the day of geraniums, coleus, and other commonplace plants would soon be over. The flowers of these Aquilegias are most lovely and delicate, ranging from white to crimson, including shades of blue and yellow. The exquisite Rocky Mountain Columbine, *Aquilegia cœrulea*, is one of the loveliest flowers in cultivation, and it and *Aquilegia canadensis*, which grows wild so plentifully in many localities, are both fine for naturalizing and will thrive if planted in the grass of meadows and allowed to take care of themselves. They are also fine for the formal garden. Assorted varieties, our selection. **For complete list of varieties, see general list of hardy plants page 25.**



Aquilegia.

HARDY PLANTS—Continued

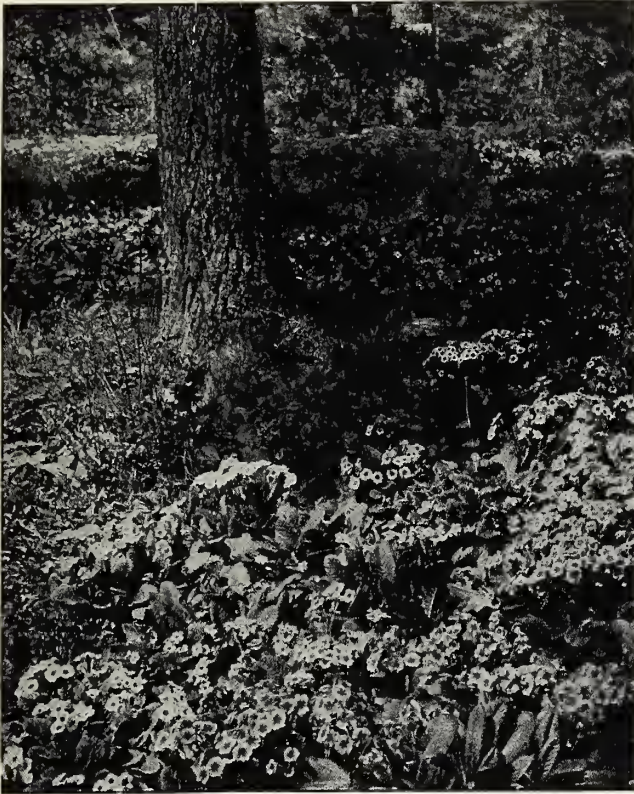
Polyanthus, or Cowslip

This charming spring-blooming plant belongs to the Primrose family, the hardy varieties of which are so very popular in England, but are rarely seen in this country, owing partly to an impression that they cannot be grown in this climate. This is a mistake, as they do very well here. For the front of the borders and shrubbery, for spring bedding, and for naturalizing in moist and partly shaded places nothing can be finer. The coloring in the flowers is especially rich and fine. At this writing we have a long border of these plants in bloom in our garden, and nothing gives us greater pleasure. They are so charming in habit, rich and varied in coloring, and so early to bloom, coming with the spring-flowering bulbs, that nothing can be more acceptable. We use them freely for decorating the dining-table and library windows, taking plants up from the border and putting them in fern-dishes and pots, where they go on blooming as if they had never been disturbed. Their hardiness has been pretty well settled by the severe winter of 1911 and 1912. The minimum temperature at our country place was 24 degrees below zero. Not a single Polyanthus was injured, and they were planted in wet soil at that.

Large-flowered White. An improved variety with very large flowers; very fine. **20c each; \$1.50 per 12; \$10.00 per 100.**
Large flowered, mixed, \$1.50 per 12; \$10.00 per 100.

Dianthus Barbatus - Sweet William

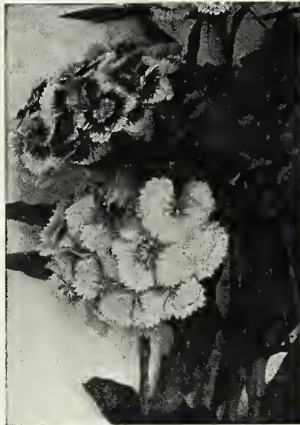
That old-fashioned favorite, the Sweet William, has almost disappeared from our gardens; more's the pity, for its place has been taken by plants of far less beauty. The Sweet William is a fine old plant which produces great masses of bloom of extremely rich and varied colors. The flowers are very lasting and fine for cutting. The plants offered are grown from the finest strains to be obtained in England. We offer them in Pink, White, Crimson, Scarlet or Mixed Colors. **Fine, large plants, 20c each; \$2.00 per 12; \$13.00 per 100.**



Polyanthus, or Cowslip.

Foxglove - Digitalis

In England the Foxglove grows wild, but, notwithstanding this, it is a great garden favorite, as it well deserves to be. For stately and picturesque beauty it is not to be surpassed and, planted in masses in the garden among shrubs or naturalized on the edge of woods, in the orchard or along brooks, it is extremely effective and satisfactory. Strictly speaking, it is a biennial, but, as it renews itself from self-sown seed, it may be treated as a perennial. Mr. Falconer has naturalized thousands of Foxgloves in Schenley Park, and nothing he has planted attracts more attention and admiration. Planted in the fall, Foxgloves will bloom well the following season. I offer a fine lot of strong plants, grown from the best strains obtainable in Europe.



Dianthus Barbatus—Sweet William.

Per 12 100

purpurea gloxiniaeflora. The white blooms are spotted with shades of white, rose and purple.....	\$2.00	\$13.00
lutea. Perennial. A rather dwarf variety with yellow flowers	2.50	15.00
maculata superba. A French introduction. Large flowers spotted with red, blue, purple, and similar shades	2.00	13.00
purpurea. The old-fashioned purple Foxglove. The flower-spikes are from 4 to 7 feet tall, coming to perfection in July.....	2.00	13.00
purpurea alba. White form of purpurea	2.00	13.00



Foxglove—Digitalis.



Climbing Hydrangea.

Improved Gaillardias

We consider the Gaillardia one of the most beautiful and desirable hardy plants in cultivation, and believe our strain of these brilliant-flowered plants to be the finest extant. We offer these plants for less than they have ever been sold for, either in this country or Europe. Though such an ornamental addition to the herbaceous border, the perennial Gaillardia is content with extremely simple treatment. Dig the soil deeply and enrich with well-rotted manure. We recommend the Gaillardia for bedding purposes as well as for borders. Give a moderate amount of room and peg down, and a grand effect is to be obtained. Every one will have noticed how grandly Gaillardias have thriven through the recent drought; they seem hardly to need water, but we recommend watering liberally to insure the finest flowers. The Gaillardia which Kelway & Son have been so successful in improving and popularizing is, of course, simply invaluable as a cut-flower, on account of its being so lasting when gathered and so brilliant and beautiful. The gay blossoms are obtainable in perpetual profusion from June to November, and the greater the drought and scarcity of other flowers the more the utility of the perennial Gaillardia is demonstrated. No more brilliant and beautiful sight can be imagined than a large bed of Gaillardias, with their profusion of highly colored flowers of all shades. Some of the varieties of this improved strain measure fully 5 inches in diameter. Mr. Robinson, in the English Flower Garden recommends that they should be planted in bold groups, and remarks that no plants have finer effect in a bed by themselves, and we quite agree with him. Extra strong, fine plants, in a splendid assortment of colors, which will be sure to give complete satisfaction. **\$2.25 per 12; \$14.00 per 100.**

Aubrietia Deltoides Purpurea

An evergreen trailing plant with silvery foliage. Many lovely purplish flowers in spring and early summer. **\$2.50 per 12; \$15.00 per 100.**

Climbing Hydrangea

We have at last succeeded in getting a stock of the rare Schizophragma Hydrangeoides, known as the Climbing Hydrangea. It is one of the rarest and most beautiful vines, having flowers similar to Hydrangea Hortensia. **Fine strong, pot-grown plants \$1.00 each; \$10.00 per 12.**

Thalictrum Aquilegifolium

This is undoubtedly one of the most desirable hardy plants in cultivation. Its fine habit, beautiful foliage and masses of lovely flowers, varying from white to purple through all intermediate shades, makes it one of the most handsome things than can be planted. A graceful plant of much charm and distinction. Height 2 to 3 feet; blooms in May and June. **\$2.50 per 12; \$15.00 per 100.**



Gaillardia.

Anchusa

Italica, Dropmore Variety.

One of the most important hardy plants of recent introduction, and a grand improvement on the original type of *A. Italica*, or Italian Alkanet, and a plant which, on account of its remarkable freedom of flowering and its beautiful blue color, is sure to become one of our most popular hardy perennials. It attains a height of 5 to 6 feet, and produces its pretty blue flowers, which are from 1 to 1 1/4 inches in diameter, throughout the entire summer. **\$2.50 per 12; \$15.00 per 100.**



Anchusa Italica.



Thalictrum Aquilegifolium.

PERENNIAL PLANTS—Continued

Hardy Salvias

Azurea. A Rocky Mountain species; grows 3 to 4 feet high, producing during August and September pretty sky-blue flowers in the greatest profusion. **\$2.50 per 12; \$15.00 per 100.**

Virgata nemorosa. A new and interesting plant for the hardy border, forming a rosette of large foliage, from which the flower-spikes arise, bearing many-flowered whorls of dark blue blossoms; the unexpanded buds are light violet-blue, forming a harmonious and pleasing color combination. It continues in flower for about six weeks during the early summer months. Grows 18 inches high. **25c each; \$2.50 per 12.**

Hardy Garden Pinks

These pinks are very hardy, and bloom with wonderful freedom in May and June. The flowers are greatly varied in color and marking and are deliciously fragrant. They should be included in every garden. Care must be taken not to cover the foliage with manure or other mulching, in the fall, as it will cause them to rot.

Dianthus Plumarius. A charming single Pink, with fringed petals. Flowers all of light colors, but greatly varied in markings. **Mixed colors, \$2.00 per 12; \$12.00 per 100.**

Dianthus Plumarius semperflorans. Similar to the above, but darker colors in a great variety of shades and markings; charming. **Mixed colors, \$2.00 per 12; \$12.00 per 100.**



Salvia Azurea.



Hardy Garden Pinks.

Scabiosa

Japonica. An introduction from Japan, with lavender or blue flower, 1 to 1½ inches in diameter. 2 to 3 feet. June to September. **\$2.50 per 12; \$15.00 per 100.**



Pyrethrum.

PYRETHRUMS

The Pyrethrums are so simply and easily cultivated that they may be recommended to all who possess a garden, whether small or large. They are perfectly hardy and absolutely invaluable for cut-flowers through the summer and autumn months. The flowers are bright and elegantly borne on long stems; most convenient for vase decoration. In form the double varieties are somewhat aster- or ebrysanthemum-like, and as their chief beauty is in the months of May and June, they may well be designated Spring Chrysanthemums, possessing the advantage over the chrysanthemums of being able to withstand the severest winter without protection. The single-flowered varieties are veritable colored marguerites and possess a range of color and hardness that marguerites might envy in vain. Nothing can surpass the Pyrethrum for profusion of flowers in the season; flowers succeed flowers without stint, and the blossoms are not injured by storm or sun. Their position should be in the border or in beds. The plants may, with advantage, be cut down after June, which will keep up a greater succession of bloom through the autumn. Pyrethrums grow freely in any ordinary garden soil; a good rich loam suits them, perhaps, best, and in order to secure size, brilliancy and number of flowers, plenty of ordinary well-rotted manure may be added to well-trenched, well-drained soil, and plenty of water may be given when they are in bud in the dry summer weather. A mulching may be applied in dry localities with advantage. The older varieties have been greatly improved upon during the past ten or fifteen years, which is the period during which Kelway & Son have made them a specialty, and the refined shape and brilliant or soft shades of the newer sorts have caused the Pyrethrum to become deservedly popular. We offer a splendid lot of plants of the choicest single varieties grown from Kelway's famous strains. **All Colors Mixed, \$2.50 per 12; \$15.00 per 100.**



Hardy Herbaceous Perennials

Until hardy plants come into general use, we cannot hope for artistic, interesting, and beautiful gardens in this country. People of taste and culture are realizing the ugliness of the stereotyped bedding with lines of color, and will no longer allow their lawns to be daubed with a flower-garden like a colored lithograph, although many of our public parks are still guilty of this atrocious work. With the material offered in this list, the most beautiful and interesting gardens are to be made, gardens that increase in interest and beauty year after year; gardens that change their aspect with every change of season. To make garden with hardy plants and shrubs requires far more taste and knowledge than it does to make one with a few varieties of bedding plants generally used, but the majority of gardeners do not have this knowledge, and have no idea of proper arrangement. But the garden of hardy plants has this advantage; the individual beauty of the plants themselves is so great that a garden cannot fail to be interesting and lovely, no matter how badly arranged, if the cultural skill is sufficient to bring them to perfection. One of the most effective ways of using hardy plants is to plant in a wide border in front of a hedge or shrubbery. The trouble with this arrangement is that the roots of the shrubs or hedge get into the border and rob the plants of a large share of their food. This can easily be prevented by placing a sunken wall of concrete between the hedge or shrubbery and border. This wall need be only 2 feet deep and 4 inches thick, and is inexpensively constructed of gravel and cement. Another very effective arrangement is two broad borders through the vegetable-garden, with a broad grass-walk between them. The effect will be enhanced by building trellises back of the borders and covering them with climbing roses or flowering vines.

Cultivation is of the simplest: beginning with any good garden soil, dig it deeply and enrich with old rotted stable manure. The best time to plant hardy perennials is when they are just starting

into growth in the spring or early in the fall. The soil should be comparatively dry when plants are set out. Avoid wet planting. Do not make the mistake of planting too thickly. The nearest approach to a rule which may be followed in planting is to set out plants which grow to a height of 2 feet or less, 12 inches apart, and all taller one-half their height. For example, *Aquilegia* and *Coreopsis*, which grow 2 feet high, may be planted 12 inches apart, while *Delphinium formosum* and Japanese Iris, which grow 3 feet high, should be 18 inches apart.

During the summer, the soil about the plants should be frequently stirred and weeds kept down. During hot, dry weather, or when it is not convenient to water, a mulch of any loose, light material is very beneficial in retaining the moisture and preventing the ground from baking. Grass clippings from the lawn are excellent material for this purpose.

About the middle of November, or later, when all soft growth has been killed and the plants are thoroughly ripened, the old hardwooded stems should be removed and burned. Then cover the plants with 2 or 3 inches, not more, of loose, strawy stable manure. Care must be taken, however, not to cover the foliage of evergreen plants such as *Phlox subulata*, Hardy Pinks, and Candytufts, as such a covering would cause the foliage to rot and kill the plants.

Most hardy plants which flower during the spring or early summer months, such as Peonies, Anemones, *Delphiniums*, *Funkias*, German Iris, etc., are better left undivided and undisturbed for several years, but they should be given a liberal dressing of stable manure or other fertilizer every spring. The late-flowering plants, like *Phloxes*, *Helianthus*, *Rudbeckias*, *Asters*, *Boltonias*, *Physostegias*, etc., are better for being replanted at least every two years. The Japanese Anemones are an exception; they should be allowed to remain undisturbed, for several years.

Special Offers of Hardy Plants in Variety

Plants in the following collections will be of the best and most desirable varieties and of the best quality, but in every instance the selection of varieties is to be made by us; but if purchasers will state the things they have, or don't wish, they will not be included in the selection. Sometimes people write asking for a list of the plants contained in these collections. This cannot be given, so please save us the unpleasantness of refusing by not asking for it.

OFFER NO. 1.	25 first class Hardy Plants in variety for	\$ 4.00
OFFER NO. 2.	50 first-class Hardy Plants in variety for	7.50
OFFER NO. 3.	100 first-class Hardy Plants in varied assortment of best species and varieties ...	13.00
OFFER NO. 4.	500 Hardy Plants, same as above, but in larger variety, for	60.00
OFFER NO. 5.	1,000 Hardy Plants, same as above but in much larger variety, for.....	110.00

In the following list, height and time of blooming are indicated as follows: Figures following the letter H indicate height in feet; figures following the letter F indicate the number of month or months the plants bloom in. This is only approximate, as height and time of flowering vary with soils and seasons.

Plants suitable for growing in the shade are marked *; for growing in partial shade are marked †.

Prices quoted are for not less than half the quantities named, but single plants will be furnished at following low rates: Plants at \$1.75 and \$2 per 12, 20c each; plants at \$2.50 per 12, 25c each; plants at \$3 per 12, 30c each; plants at \$4 per 12, 40c each; plants at \$5 per 12, 50c each.

HARDY HERBACEOUS PERENNIALS—Continued.

	Per 12	100
ACHILLEA <i>ægyptica</i> . Sulphur-yellow flowers; silvery gray foliage; very neat. H 1-3, F 6-8. \$2.00 \$14.00		
Millefolium roseum . Red flowers produced in profusion for a long season; little known here, but very popular in England. H 1-3, F 4-10 2.00 14.00		
Parnica, The Pearl . An improvement of Parnica fl. pl. H 2, F 6-10..... 2.25 14.00		
* ACONITUM napellus (Monkshood). Beautiful but poisonous plant with blue flowers. H 2, F 7 4.00		
Fischeri . Tall panicles of blue flowers. F 7-8.. 4.00		
ACTAEA rubra . Baneberry. Showy spike of clustered white flowers from April to June, followed by bright red berries in autumn. 1-2 feet 2.50 15.00		
ÆGOPODIUM Podagraria variegata . A rapid-growing plant, with neat green and yellow variegated foliage, thriving in any soil; makes a fine border for a bed of shrubs or for covering waste ground. H 1 2.50 15.00		
AGROSTEMMA coronaria . Beautiful rich crimson flowers. H 1½, F 7 2.25 14.00		
coronaria alba . Pure white 2.25 14.00		
coronaria atrosanguinea . Brilliant dark crimson 2.25 14.00		
coronaria bicolor . White and red 2.25 14.00		
Flos-Jovis . Extremely desirable rose tinted flowers, fine for cutting. H 1½, F 7 2.25 14.00		
AJUGA reptans atropurpurea . Large spikes of purplish blue flowers in May. Valuable plant for the rockery and for carpeting the ground in shady places where grass will not grow... 2.50 14.00		
ALYSSUM saxatile compactum . Masses of golden yellow flowers. Invaluable for spring flowering. H 1, F 4 2.50 15.00		
† ANEMONE japonica alba . White. H 3-5, F 9-10 2.50 18.00		
† japonica, Queen Charlotte . Large, semi-double flowers of lovely shade of pink..... 3.00 20.00		
† japonica rosea . Purplish rose. H 3-5, F 9-10 2.50 18.00		
† japonica, Whirlwind . New semi-double variety. White. H 3-5, F 9-10 2.50 18.00		
These charming Japanese Anemones are among the most beautiful things in cultivation. They are perfectly hardy, and in a strong, rich soil will grow 4 to 5 feet high. They are a mass of beautiful white or pink bloom from late summer until heavy frosts. They should be in every garden, and on large places should be planted by the hundred. Plant early in September or spring in heavy soil and partial shade.		
ANEMONE pennsylvanica . A beautiful native Anemone. Fine for naturalizing. H 1½, F 6. \$2.25 \$14.00	Per 12	100
ANTHEMIS Kelwayi . Soft, clear yellow. H 1½, F 6-8 2.25 14.00		
* AQUILEGIA alpina superba . Blue and white... 2.25 14.00		
cærulea (Rocky Mountain Columbine). The most beautiful of all Columbines; one of the most charming hardy flowers in cultivation. H 1½, F 4-5 2.50 15.00		
cærulea lutea . New; large, light yellow flowers. H 1-2, F 4-5 2.25 14.00		
† californica . Large orange-yellow flowers..... 2.25 14.00		
† canadensis (native). Red and yellow. H 1, F 5 2.25 14.00		
† chrysantha . Beautiful golden yellow flowers; blooms for two months. H 3-4, F 5-6..... 2.50 15.00		
† chrysantha alba . A white variety of the above. 2.25 14.00		
† glandulosa . Splendid dwarf variety, with lovely blue and white flowers 2.25 14.00		
† jaetschani . Large yellow flowers, with reddish spurs 2.50 15.00		
† truncata . Scarlet and yellow; dwarf; very early 2.50 15.00		
† fulgaris . Old-fashioned double Columbine... 2.00 13.00		
ARABIS alpina . Forms a dense carpet, completely covered with pure white flowers in early spring. Fine for rockwork and edging... 2.50 15.00		
alpina fl. pl. Double form of the above; very lasting and beautiful 2.50 15.00		

	Per 12	100
† ARALIA . Splendid native foliage plants, growing 6 to 8 feet high; of striking effect..... \$2.50		
cachemirica 2.50		
cordata 2.50		
edulis 2.50		
ARENARIA montana . Beautiful dwarf white-flowering plant which will thrive in a dry situation 2.50 15.00		
ARMERIA cephalotes 2.25 14.00		
dianthoides 2.25 14.00		
formosa 2.25 14.00		
maritima splendens (Thrift; Sea Pink). H 1½, F 5-7 2.25 14.00		
ARRHENATHERUM bulbosum variegatum . A neat and distinct new variegated grass which should prove very attractive in the rock-garden 2.25 14.00		
ARTEMISIA Abrotanum (Old Man; Southern Wood). Dark green, finely cut foliage; aromatic odor 2.50		
lactiflora . Stately plant with feathery white flowers. H 6-8, F 9-10 2.50		
Stelleriana (Old Woman). Deeply cut silvery foliage; much used in carpet bedding. H 18 in. 2.25 14.00		
ASCLEPIAS incarnata . Rosy pink flowers; very desirable. H 2-3, F 7-9 2.00 13.00		
tuberosa . Orange-scarlet; one of the showiest and finest hardy plants grown. H 1-2, F 7-9. 2.50 15.00		
ASTER alpinus . Very dwarf variety with large showy purplish flowers in May and June..... 2.25		
alpinus alba . A variety of the above..... 2.25		
Beauty of Tymardreath . A beautiful new Michaelmas Daisy; white flowers with golden disc changing to red 2.25		
Harvardii . Full and strong blue flowers..... 2.25 14.00		
novæ-angliæ rubra . The best of the American "Hardy Asters;" very showy. H 3-4, F 9-10		
novæ-angliæ, Wm. Bowman . Large, rich rosy purple flowers, with deep golden bronze disc. Very showy. H 4-5, F 8-9..... 25c each. 2.50		
novi-belgii, Elia . Large delicate mauve flowers, with golden center; profuse bloomer; extra fine 2.25 14.00		
novi-belgii, Enchantress . Small pinkish blue flowers 2.25		
novi-belgii, Esme . White flowers, medium height 2.25		
Parnicoides . Dwarf, early-flowering, hardy Aster blooming in July and August. Its charming white flowers are produced in the greatest profusion. Distinct and good 2.25 14.00		
Robert Parker . Large sprays of beautiful lavender-blue flowers with yellow center. H 4, F 9 2.25		
tataricus . Large flowers and very late. H 5-6, F 9-10 2.25 14.00		
turbineifolius alba . Pure white 2.25		
ASTILBE Arendsii . This new type is the result of crossing A. Davidii with A. japonica compacta, A. astilboides, and A. Thunbergii. The plants are of very vigorous growth, 2½ to 4 feet high, producing many-branched, feathered beads of flowers.		
Pink Pearl . Shell pink 3.00		
Ceres . Rosy lilac 3.00		
Pyramidalis . Pure white 3.00		
Juno . Strong, upright grower; plumes of a deep violet-rose color 30c each. 3.00		
Vesta . Very graceful plumes of light lilac-rose 30c each 3.00		
BAPTISIA australis (False Indigo). Dark green, deeply cut foliage and spikes of dark blue flowers. H 2, F 6-7 2.00 12.00		
BELLIS perennis (Single Wild English Daisy)... 1.25 8.00		
BERGAMOT . See Monarda.		
BOCCONIA cordata . Large, broad, striking leaves; large plumes of white flowers; fine for subtropical effects. H 5-7, F 7-8 2.50 15.00		
Giralda . A handsome new variety with large silvery gray foliage and bold heads of milky white flowers 2.50 15.00		
macrocarpa 1.75		

HARDY HERBACEOUS PERENNIALS—Continued.

	Per 12	100		Per 12	100
BOLTONIA asteroides. Pure white; very effective. H 3-4, F 9-10	\$2.00	\$13.00	*COREOPSIS grandiflora. An improved variety with large, bright yellow flowers; one of the best hardy plants in cultivation. Fine for cut flowers. H 2-3, F 5-7	\$2.00	\$12.00
latisquama. Light pinkish blue flowers; very lovely; blooms late in fall. Highly recommended. H 3-4	2.50	15.00	verticillata. Masses of small golden yellow flowers; finely cut foliage. H 2-3, F 7-8.....	2.00	13.00
CALIMERIS incisifolia. A graceful little plant with finely cut foliage, and is the prettiest of all single white daisy flowers; blooms all summer and is distinct and fine	2.00	13.00	CORONILLA varia. Compact sheets of beautiful pink bloom. H 1, F 5-10	2.25	14.00
CAMPANULA (Bellflower). The Campanula genus is one of the largest and choicest. The varieties are all of elegant habit and should be represented in every garden			CYPRIPEDIUM acaule. Pink	4.00	
carpatica. Dwarf; light blue. H $\frac{3}{4}$, F 6.....	2.50		pubescens. Large; yellow	3.00	
carpatica alba. Dwarf white	2.50	15.00	spontabile. The most beautiful hardy orchid, and one of the most lovely flowers in the world; does well in a shady location.....	50c each..	5.00
Mariesii compacta nana. A new improved dwarf variety of great beauty; large white or purple flowers	2.00	13.00	DAY LILY, WHITE. See Funkia.		
Mariesii grandiflora. Large white and purple flowers; desirable	2.00	13.00	Yellow. See Hemerocallis.		
Medium (Canterbury Bells). One of the showiest and prettiest of garden plants; but being only a biennial, dies after blooming. Should be planted in spring	2.50	15.00	DIANTHUS deltoides. A creeping Pink of great beauty.	2.25	14.00
persicifolia. Large blue flowers, almost as showy as Canterbury Bells. H 2, F 6.....	2.50	15.00	Her Majesty. A fine hardy white Pink.....	2.50	15.00
persicifolia alba. White flowers; a grand border plant. H 1-3, F 7	2.50		Juliette. White, laced crimson	2.50	15.00
pyramidalis. Very showy, tall variety. H 4-5, F 7	2.50		latifolius atrococcineus fl. pl. (Everblooming Hybrid Sweet William). A beautiful summer bedding variety, producing masses of brilliant fiery crimson flowers during the entire season	2.50	15.00
CANDYTUFT. See Iberis.			*DICENTRA eximia. Beautiful fern-like foliage; blooms all summer. H $\frac{3}{4}$ -1 $\frac{1}{2}$, F 4-8.....	3.00	
CANTERBURY BELLS. See Campanula Medium.			DRACOCEPHALUM Ruyschianum. Dark violet-blue; neat border plant. H 2, F 6.....	2.50	15.00
CARDINAL FLOWER. See Lobelia.			EPIMEDIUM (Barrenwort).. A genus of dwarf-growing plants with leathery foliage and panicles of lovely white, yellow and lilac-colored flowers. The foliage of all the varieties offered below assumes the most beautiful tints of color in autumn.		
CASSIA marylandica. Handsome pinnate foliage and numerous racemes of showy yellow flowers; extremely desirable plant of the easiest culture. H 4-5, F 7	2.00	13.00	lilacea. Beautiful lilac	2.50	15.00
CENTAUREA babylonica. Showy yellow flowers; suitable for planting in shrubberies and large borders. H 6-10, F 7	2.25		Musschianum. Creamy white	2.50	15.00
macrocephala. Yellow; very fine. H 3-5, F 7.	2.25		niveum. Pure white	2.50	15.00
montana (Cornflower). Blue flowers. H 2, F 6.	2.50		sulphureum. Light yellow	2.50	15.00
montana alba. White flowers	2.50	15.00	ERIGERON speciosus. (Fleabane). Somewhat like the native aster, but blooms much earlier. Rich colors, varying from rose to violet and purple. 1 to 2 feet. Midsummer.....	2.50	15.00
CERASTIUM Biebersteinii. Very dwarf plant, covered with small white flowers; very desirable for carpeting or edging borders and beds; silvery white foliage, which is very attractive throughout the season	2.50	15.00	ERYSIMUM pulchellum. Dwarf plant like a wall-flower	2.25	
CHRYSANTHEMUM, Hardy Pompon Varieties. H 2-3, F 10-11	2.00	13.00	EULALIA. The Eulalias are splendid grasses for making beds and groups for tropical effects.		
Hardy Large-Flowered Varieties. These and the preceding varieties are the old-fashioned Chrysanthemums that used to be in every garden. They are perfectly hardy, and make a brave show of color late in the fall, after all other flowers are gone. H 3-4, F 10-11.....	2.50	15.00	gracillima. Very graceful. H 5-7.....	2.00	13.00
leucanthemum (Shasta Daisy). Advertised as a California wonder	2.00	13.00	Japonica. H 5-7	2.50	15.00
*maximum, Princess Henry. A variety with very large white flowers	2.00	13.00	Japonica variegata. H 5-7	2.00	13.00
Speaker. The largest of the Maximum varieties; immense showy flowers	2.00		EUPATORIUM purpureum. A splendid native plant, growing 6 to 10 feet high, with immense heads of purplish pink flowers; fine for naturalizing along streams and ponds, and for planting among shrubbery. F 7-9.....	2.00	13.00
CIMICIFUGA racemosa simplex. Most valuable by reason of its extreme late-flowering, beginning in September and attaining full perfection about the middle of October, a time when flowers are scarce. Its flowering stems are from 2 $\frac{1}{2}$ to 3 feet high, terminated with a dense spike of white flowers, which, when cut, last in perfection a long time.....	3.00		EUPHORBIA corollata. A choice native plant with white flowers; largely used by florists for cut-flowers'	2.00	13.00
CLEMATIS recta. Large heads of pure white flowers	2.50	25c each..	EVENING PRIMROSE. See Oenothera.		
Davidiana. This is an herbaceous plant instead of a climber, and has beautiful blue flowers and handsome foliage; very desirable	2.50		FESTUCA glauca. A very dwarf grass with pretty blue foliage; fine for edging.....	2.25	14.00
integrifolia. Large purple flowers in great profusion in July and August	2.50		FUNKIA Acki. Large glaucous green leaves.....	2.00	13.00
			*aurea maculata. Young foliage in early spring is of a bright yellow color.....	2.00	
			*caerulea (Blue Day Lily). H 2 $\frac{1}{2}$, F 7.....	2.00	13.00
			*Sieboldii. One of the finest of hardy plants on account of its splendid foliage. H 2-3, F 7-8	2.50	15.00
			*subcordata (White Day Lily). H 1 $\frac{1}{2}$, F 5-8..	4.00	
			*variegata. Variegated foliage, blue flowers. H 1, F 5	2.25	14.00

HARDY HERBACEOUS PERENNIALS—Continued.

HARDY FERNS. Varieties marked (*) require shade; those marked (†) succeed in open border.

* Adiantum pedatum (Maidenhair Fern).	† Onoclea Struthiopteris (Ostrich Fern).		
* Aspidium acrostichoides (Wood Fern).	† Osmunda gracilis (Flowering Fern).		
* Aspidium marginale	† Osmunda Claytoniana (Flowering Fern).		
* Aspidium Goldieanum (Shield Fern).	† Osmunda cinnamomea (Cinnamon Fern).		
† Asplenium Filix-fœmina (Lady Fern).	† Osmunda regalis (Royal Fern).		
† Asplenium Thelypteris	* Woodwardia angustifolia (Chain Fern.)		
† Dicksonia punctilobula (Gossamer Fern).	† Woodwardia virginica		
† Onoclea sensibilis (Sensitive Fern).			

Any of the above Ferns 25c each; \$2.50 per 12; \$15.00 per 100.

GENTIANA Andrewsii (Blue Gentian). Pretty native species with blue flowers. H 1½, F 9.	Per 12	100
	\$2.25	\$14.00

GEUM coccineum. Pretty border plants, growing 18 inches high and producing brilliant scarlet flowers throughout the summer.	2.50	
atrosanguineum. Orange-scarlet	2.50	

GYPSOPHILA paniculata (Baby's Breath). When in bloom in August and September it forms a symmetrical mass 2 to 3 feet in height and as much through, of minute white flowers having a beautiful gauze-like appearance.	2.50	15.00
paniculata flore pleno. Beautiful double variety of above	2.50	
scorzonerifolia. Beautiful rose-colored Baby's Breath	2.50	15.00

HELENIUM autumnale superbum. An improved variety of great beauty	2.50	
Hoopesii. Bright orange flowers. H 2-3, F 7-8.	2.50	

HELIANTHEMUM mutabile (Sun Rose). Charming dwarf evergreen plants with pink and white flowers. H ½, F 5-6.	2.25	14.00
---	------	-------

HELIANTHUS. The hardy Sunflowers are among the most desirable of hardy plants. They are free-flowering over a long season, are very decorative in the garden, and are fine for cutting. All have bright yellow flowers.

giganteus. Pale yellow flowers, 3 inches across; very elegant. H 4-5, F 8-9	2.00	13.00
H. G. Moon. One of the best. H 4, F 9-10	2.00	13.00
latiflorus. The best free-flowering variety; single yellow flowers; fine for cutting. H 4-5, F 7-8	2.00	13.00
Maximilianii. Tall and very late; one of the most stately and elegant hardy plants in cultivation; best Sunflower to bloom in the fall. H 7-9, F 10-11	2.00	13.00
orgyalis. A very striking, tall Sunflower. H 5-6, F 6-10	2.00	13.00
Scaberrimus, Miss Mellish. Very large duplex flowers of exquisite shape and bright orange-yellow, freely produced during August and September. Grand for cutting. H 5	2.00	13.00
tuberosus (Jerusalem Artichoke). Very decorative; grows 12 feet high; also a desirable vegetable	1.50	9.00

HELIOPSIS, B. Ladhams. Broad-petal, rich yellow flowers; the best of the Heliopsis. H 3, F 7-9	2.25	14.00
---	------	-------

Pitcheriana. Similar to the hardy Sunflower, but blooming during a much longer season. H 3-6, F 8-10	2.00	13.00
---	------	-------

HEMEROCALLIS aurantiaca. Large orange-yellow flower	3.50	
Dumortieri. H 1½, F 6-7	1.75	12.00
flava (Lemon Day Lily). H 2-3, F 6-7	2.25	14.00
graminea. Bright yellow; one of the best	2.00	13.00
Qwanso fl. pl. Double	2.50	15.00
Sieboldii. Clear, deep bright yellow. H 3, F 5-6	2.25	
Thunbergii. Bright yellow. H 3, F 7-8	2.00	

HERACLEUM giganteum (Giant Parsnip). A remarkable foliage plant	2.50	
--	------	--

HESPERIS matronalis, Purple (Sweet Rocket). H 2-3, F 6-9	Per 12	100
Matronalis, White	\$2.00	\$13.00
	2.00	13.00

HEUCHERA, sanguinea. Very choice, dwarf graceful plant with lovely crimson flowers; fine for cutting. H ¾-1½, F 7-9	2.50	15.00
sanguinea gracillima. (Alum Root). Dwarf plants for the border of rockeries. Flowers produced from June to September	2.50	15.00
sanguinea splendens. Not quite so tall as the preceding variety. Intense crimson flowers	2.50	15.00

* HIBISCUS Moscheutos. Bright pink	2.00	13.00
Moscheutos, Crimson Eye. White. H 3-6, F 8-10	2.50	15.00

Mallow Marvels. Enormous single flowers of white, pink and crimson.		
Separate Colors	35c each	3.50
Mixed Colors	20c each	2.00
		12.00

HIERACIUM aurantiacum. A low-growing rapid-spreading plant adapted for dry, sandy spots for covering steep banks; orange-red flowers.	1.75	
--	------	--

HOLLYHOCKS, East Double	2.50	15.00
Best Single	2.00	13.00
Allegheny	2.50	14.00

IBERIS corifolia (Candytuft). Large snow-white flowers. H ¾, F 5	2.50	15.00
sempervirens (Hardy Candytuft). It covers the ground with a mat of pure white flowers. H ¾-1, F 4-5	2.50	15.00
sempervirens nana. Improved dwarf variety	2.50	15.00

INULA Helenium. Free-flowering border plants with yellow flowers. H 2, F 6-8	2.50	
---	------	--

LATHYRUS latifolius albus (White Everlasting Pea). These Everlasting Peas are but little known in this country, but are great favorites in England. They are extremely showy and fine	2.50	15.00
latifolius splendens. Bright pink	2.50	

LAVENDER. The well-known garden herb	2.00	13.00
---	------	-------

LIATRIS callilepis. A new variety of Liatris, similar to <i>Pyenostaehya</i> , but dwarfier and blooms a month earlier. A valuable introduction. H 1½-2, F 6	2.25	14.00
graminifolia rubra. (Blazing Star; Button Snake-root). A hardy plant native to the eastern part of the United States. Stems are rather slender. 2 to 3 feet high with many deep red blooms.	2.00	13.00

LINUM perenne (Flax). H 1½, F 6-8	2.25	14.00
perenne album	2.25	14.00

LOBELIA cardinalis. Native plant, with intensely brilliant cardinal flowers. H 2-3, F 7-9	2.50	15.00
syphilitica. Grows freely in rather moist places. The flowers, which are borne in long racemes, are blue or purple. 2 to 3 feet. July to September	2.50	15.00

LYCHNIS chalcedonica. Dense head of brilliant scarlet flowers; one of the best border plants. H 1½-3, F 5-8	2.25	13.00
viscaria splendens	2.50	15.00

Flos-cuculi. Flowers in clusters, vary in color from pink to deep red. 1 to 2 feet. May to August	2.00	13.00
--	------	-------

LYSIMACHIA clethroides (Loosestrife). Semi-aquatic, with white flowers. H 2-3, F 7-9	2.25	
Nummularia aurea (Golden Moneywort). Fine for carpeting	2.25	14.00
punctata. Showy yellow flowers. H 1½-2, F 6	2.00	
Nummularia. (Moneywort). Splendid plant for carpeting the ground in shaded places, or for vases and baskets. Foliage dark green	2.25	14.00

LYTHRUM superbum roseum. Very showy; splendid for banks of streams and ponds. H 3-5, F 7-8	2.25	14.00
---	------	-------

HARDY HERBACEOUS PERENNIALS—Continued.

	Per 12	100		Per 12	100
MALVA moschata alba. This lovely Mallow blooms profusely in June and July, and grows 18 to 24 inches high. The flowers are white; 2 inches across	\$2.25		PHYSOSTEGIA virginica. Erect stems of pretty pink flowers. H 1½-2½	\$2.00	\$13.00
moschata rosea. Same as above with rose-colored flowers	2.25		virginica alba. A beautiful white variety. H 2-3, F 7-8	1.75	12.00
MERTENSIA virginica. A lovely blue flower, blooming in early spring. H 2, F 4	2.50	15.00	virginica compacta. Dwarf; flowers pink, on erect stems. H 1¼-1½	2.00	12.00
*MONARDA didyma (Bergamot). Very showy crimson flowers. H 2, F 7-9	2.00	13.00	*POPPIES, ORIENTAL. The Perennial Poppies are among the most brilliant of hardy flowers; the graceful, brightly colored, cup-shaped flowers are borne on long stems. The large-flowering, or Oriental Poppies, are also the most showy plants for a garden and should be planted early. The foliage of Oriental Poppies dies away in the summer, and many think they are dead, but they will start into growth again in the fall. They are rather hard to establish, but once established, prove the most persistent perennial.		
Cambridge Scarlet (Oswego Tea; Bee-Balm). One of the most brilliant red flowers, almost as intense in color as the cardinal flower. For mass planting, it has no superior. 2 feet. July to September	2.25	14.00	Cerise Beauty. Extra-large blooms; cerise-pink with crimson center and black blotch at base of petals	2.50	15.00
MYOSOTIS palustris semperflorens (Water Forget-Me-Not). Splendid for naturalizing on edge of ponds and streams; also for beds and borders	1.75	11.00	Mrs. Marsh. Scarlet, flecked with white	2.50	15.00
palustris semperflorens grandiflora. Improved form with larger flowers	1.75	11.00	Mrs. Perry. Orange-apricot—distinct and unusual color	2.50	15.00
CENOTHERA (Evening Primrose). The Evening Primrose is very effective in the garden on moonlight nights.			Queen Alexandra. Rose-salmon, extremely clear and brilliant	2.50	15.00
Lamarckiana. Large, sulphur-yellow flowers, lovely beyond description. H 4-5, F 7-8	2.50	15.00	Silberblick. Salmon, with violet-blue blotches; white anthers and stamens	2.50	15.00
missouriensis. H ½, F 6-8	2.50	15.00	Oriental Hybrids. An assortment of the best varieties and colors	2.50	15.00
speciosa rosea. Dwarf; large white flowers tinted pink	2.50		PINK. See Dianthus.		
glauca Fraseri. Flowers are yellow, quite large, and borne in clusters. 2 to 3 feet. Mid-summer	2.00		PLANTAIN LILY. See Funkia.		
ONOPORDON Acanthium (Scotch Thistle). Noble plant, with striking foliage and showy purple flowers	2.00		PLUMBAGO Larpentæ. A dwarf plant covering the ground completely with its foliage. In September it is a mass of beautiful deep blue flowers, which gradually change to violet	2.50	15.00
PACHYSANDRA terminalis. A trailing plant 6 to 8 inches high, forming broad mats of bright, glossy green foliage and small spikes of flowers during May and June; invaluable as a cover plant either in the sun or shade	2.50	15.00	PLUME POPPY. See Bocconia.		
PANSIES, Best Strain. Plants for spring bedding75	5.50	POLYGONUM cuspidatum (Giant Knotweed). Grows to 12 feet high; makes a splendid group for tropical effect	1.75	
PARDANTHUS chinensis (Blackberry Lily)	2.00	13.00	*PRIMULA frondosa. Rosy lilac flowers above silvery tufts of foliage. H ¾, F 4	2.50	
PENNISETUM Japonicum. This new Hardy Grass is very desirable. It grows 4 feet high, with slender, graceful foliage and showy plumes thrown well above the leaves. Most valuable for adding variety to the garden planting. 25c each.	2.50		Japonica. Beautiful and desirable variety	2.50	
*PENTSTEMON barbatus Torreyi. Brilliant crimson and orange flowers in July; one of the best hardy plants. H 3-5	2.25	14.00	RANUNCULUS acris fl. pl. (Bachelor's Buttons). A showy border plant with double yellow flowers in early summer	2.00	
pubescens. A very showy variety, with rosy purple flowers. F 7-8	2.00	13.00	RHEUM Collinianum. Like the above, but foliage more deeply cut; splendid	3.50	
PHLOX divaricata cærulea	2.00	12.00	emodi. Grows 5 feet high; wrinkled leaved, with red veins; very effective	3.50	
divaricata canadensis	1.75	10.00	officinale (Chinese Rhubarb). The immense leaves of this noble foliage plant produce a bold and striking effect. Robinson says this is the most effective foliage plant introduced for many years	35c each.	3.50
divaricata Laphamii. Variety of P. canadensis, one of the finest hardy perennials adapted for the rockery, for the border and for naturalizing; remarkably free blooming, forms a somewhat shabby plant, 18 inches in height, individual flowers much larger than P. canadensis; the heads are large, and the petals not cleft as in the type	2.50		tanguticum. Has fine foliage and is of rapid growth; distinct and striking	40c each.	4.00
divaricata alba. A white sport of P. divaricata canadensis	2.50	15.00	RODGERSIA podophylla. A stately plant, both in foliage and flower; planted in rich, deep soil, in a sunny situation, and liberally supplied with water, produces five-lobed leaves 2½ to 3 feet in diameter, at first bright green, changing to a metallic-brown hue; flowers white, not unlike a spirea, and borne in large, fluffy, feathery sprays in midsummer	75c each.	7.50
Stelleriana. Lovely light blue; distinct	1.75	10.00	tabularis. A rare Siberian species with attractive pale green foliage, which in established plants is borne on stems 3 to 4 feet high, and is fully 18 inches in diameter, retaining its fresh and stately appearance throughout the season. Its fluffy, feathery white flowers are borne on sprays 6 feet high during midsummer	\$1.00 each.	\$10.00
subulata (Moss Pink). Rose-pink. Fine for covering banks; thrives in hot, dry situations, and blooms profusely	1.75	12.00			
subulata Bridesmaid	1.75	12.00			
atropurpurea. Deep rosy purple	1.75	12.00			

HARDY HERBACEOUS PERENNIALS—Continued.

	Per 12	100		Per 12	100
ROSEMARY. An old-fashioned plant with scented foliage	\$1.75		TEUCRIUM Chamaedrys. Evergreen shining leaves; purple flowers; will grow on barren soils	\$2.00	\$12.00
RUBECKIA			THALICTRUM adiantifolium. Beautiful foliage like maidenhair fern	2.25	
<i>laciniata.</i> Golden Glow. Double Rudbeckia. Grows 10 to 12 feet high, and is undoubtedly one of the most effective plants in cultivation. It is becoming very popular. F 7-9	1.75	12.00	<i>glaucum.</i> Bronzy-yellow flowers, bluish foliage.	2.50	
<i>nitida.</i> Pure yellow flowers	2.00		<i>dipteroarpum.</i> A new variety with lilac-mauve flowers, yellow stamens and anthers. 4 feet. August and September	3.50	
* <i>purpurea.</i> Large crimson-maroon flowers; very distinct	2.25	14.00	THERMOPSIS caroliniana. Showy plants, with attractive yellow flowers	2.50	15.00
<i>speciosa.</i> Native. One of the very best border plants in cultivation. A group of "Golden Glow" surrounded by this variety makes a splendid effect. H 2-3, F 7-9	1.75	12.00	TRADESCANTIA virginiana (Spiderwort). Produces a succession of purple flowers all summer	1.75	12.00
<i>subtomentosa.</i> Densely branched plant, 2½ feet high, completely covered throughout the summer with a mass of brilliant lemon-colored flowers, with purple centers	2.25	14.00	TUNICA Saxifraga. A pretty tufted plant with light pink flowers, produced all summer; useful either for the rockery or the border	2.25	14.00
RUTA graveolens (Rue). This is a well known herb	1.50		UNIOLA latifolia. A very useful ornamental grass	2.00	
SAGE. The well known herb	1.50		VERBASCUM nigrum. Yellow flowers in long spikes; dwarfed habit	20c each	2.00
SALVIA turkestanica. Extremely decorative sweet-scented foliage and showy whorls of white flowers surrounded by pale pink. H 2, F 6	2.50		<i>olympicum.</i> Bright yellow flowers; large woolly foliage; stately	25c each	2.50
<i>globosa.</i> Dwarf. Light blue	2.50	15.00	<i>Phoeniceum.</i> Seedlings; crimson-rose, lilac and white; large and showy	2.50	14.00
SAPONARIA ocymoides splendens. A charming little creeping plant covered with lovely bright crimson flowers during the month of June	2.25		VERBENA venosa. A hardy Verbena; very extensively used in England for bedding. It grows about 18 inches high, but if pegged down will cover the ground with heads of lovely purple-violet flowers throughout the season. Not quite hardy except on thoroughly well-drained soils	2.00	13.00
<i>officinalis fl. pl.</i> Beautiful plant growing about 2 feet high and blooming in August; large double flowers of a lovely soft rose-pink	2.00	13.00	VERONICA amethystina	2.00	
SAXIFRAGA Leichtlinii. Large, shiny evergreen foliage and large panicles of bright pink flowers. H 1, F 4-5	2.50	15.00	* <i>longifolia.</i> Spikes of deep bluish-purple flowers; very handsome. H 2, F 8-9	2.50	
SCABIOSA caucasica. Large head of pale blue flowers; one of the best hardy plants in cultivation; grows and flowers freely in any garden soil	2.50		<i>rupestris.</i> A trailing variety used in rock-work and for carpeting in semi-shaded places. Flowers blue	2.50	15.00
<i>caucasica alba.</i> A white-flowered variety of the above	2.50		<i>spicata.</i> Violet-blue flowers on long spikes; dwarf habit	2.50	15.00
SEDUM acre. Fine for covering graves and for carpeting	2.00	12.00	<i>virginica.</i> (Great Virginian Speedwell). A free growing perennial which likes the bright sunshine. Flowers are white or pale blue. 2 to 6 feet. August to September	2.50	15.00
<i>spectabile.</i> A fine fall-flowering plant with great heads of purple flowers. H 1½, F 9-10	2.25	13.00	VINCA caerulea. The well known hardy Myrtle; fine for carpeting under trees where grass will not grow	2.50	15.00
<i>stoloniferum</i>	2.00		VIOLA cornuta. Flowers almost as large as a Pansy. This is the most desirable of hardy plants. Blooms continuously all season. Blue flowers	1.75	12.00
<i>Sieboldii.</i> (Siebold's Stonecrop). This Japanese variety, with its exquisite glaucous leaves, is considered the best foliage plant in the Sedum family. Flowers rosy pink	2.50	15.00	<i>pedata bicolor.</i> Deep purple flowers	1.75	12.00
<i>reflexum.</i> (Stone Orpita). Small, bright yellow flowers making up a flat cluster, 1 to 1½ inches across. July	2.50	15.00	<i>cornuta alba.</i> Clear white	1.75	12.00
<i>sexangulare.</i> (Six-rowed Stonecrop). Flowers golden yellow. The reddish cast of the new growth is charming. July	2.50	15.00	<i>cornuta lutea grandiflora.</i> Large golden-yellow.	1.75	12.00
SILENE Schafta. (Catchfly). A low-growing plant with rose-pink flowers in clusters. Useful for edging and the rock-garden. June to September	2.50	15.00	<i>cornuta atropurpurea.</i> Deep violet-blue	1.75	12.00
SILPHIUM perfoliatum. Yellow flowers. H 4-8, F 7	2.50		<i>Velvet Purple.</i> Very dark and glossy, resembling velvet	1.75	12.00
* SPIREA filipendula. A beautiful dwarf variety, with elegant fern-like foliage. H ½-3, F 6-7	2.25	14.00	<i>White Perfection.</i> The best pure white variety. Free-flowering and fragrant	1.75	12.00
<i>palmata.</i> Broad clusters of the most beautiful crimson flowers above splendid palmate foliage. H 2, F 7-8	2.50	15.00	VIOLETS, Single. In the variety offered below, the Single Violets have been brought to such a high point of excellence that they are equal in favor with the double sorts, and, being much easier to grow and free from disease, we strongly recommend the amateur to confine himself to this class. By the use of a cold-frame a fine crop of flowers can be had in the spring and in the fall.		
<i>palmata elegans.</i> A lovely new variety with light pink flowers. H 2, F 7-8	2.50	15.00	<i>Princess of Wales.</i> A grand variety; very large flowers	2.50	15.00
<i>Ulmaria</i>	2.25		WAHLENBERGIA grandiflora	2.00	
STACHYS lanata. White, woolly leaves and purple flowers; useful for edging. H 1, F 7	2.25		<i>grandiflora alba</i>	2.00	
STATICE latifolia	2.50		WALLFLOWER	1.75	12.00
STENANTHIUM robustum	4.00		* YUCCA filamentosa (Spanish Bayonet; also known as the Mexican Soap Plant). Fine, strong plants; a stately decorative plant, with immense spikes of large white flowers; fine for the garden or lawn	2.50	15.00

Ornamental Flowering Shrubs

Our stock of shrubs is unsurpassed in quality, but our prices will be found much lower than those made by most nurserymen. As a rule, shrubs are much more effective when planted in masses, and our low prices permit them to be used freely in this way.

For a guide in planting, we have indicated the size the shrubs will eventually be, as follows: "H 3-4, S 3-4 June," which means

"Height 3 to 4 feet, spread 3 to 4 feet, flowers in June." The sizes given can only be approximate, as the size shrubs attain varies considerably with soils and climate.

Shrubs marked (*) can be grown in partial shade, but they will also thrive in full exposure to the sun.

SPECIAL OFFER OF SHRUBS

We want to encourage the planting of shrubs. To be effective, they should be planted in masses, but when dealers or nurserymen ask 50 cents to \$1 each for easily grown shrubs there is not much encouragement to plant them freely. We have made arrangements by which we can supply our customers with well-grown shrubs in the best varieties at the extremely low prices quoted below, but in every instance the selection of varieties must be left to us. But in ordering, if it is stated that certain shrubs are not wanted they will not be sent. We guarantee these shrubs to be satisfactory in both quality and variety. We cannot give in advance of filling the order a list of varieties contained in these collections.

SPECIAL OFFER A—50 Shrubs in fine assortment of 15 varieties.....\$15.00
SPECIAL OFFER B—100 Shrubs in fine assortment of 20 varieties..... 23.00

	Each	Per 12
ALMOND, Dwarf Double-flowering Pink. H 3-5, S-4, May	\$1.25	\$12.00
Dwarf Double-flowering White.	1.25	12.00
AMELANCHIER Botryapium. H 8-10, S 6-8, May60	6.00
canadensis (Juneberry). H 12-15, S 12, April, May60	6.00
AMORPHA canescens. H 2-3, S 2, June.....	.50	5.00
fruticosa (False Indigo). H 6-8, S 8, June.....	.75	7.50
ARALIA Japonica. A distinct and most beautiful tall shrub with palm-like leaves and large heads of white flowers in August. H 8-12, S 575	6.50
pentaphylla. A shrub little known but very desirable. The effect of the luxuriant glossy foliage on the arching branches is very beautiful. H 5-7, S 5-660	6.00
*BERBERIS Thunbergii (Japanese Barberry). One of the most desirable shrubs in cultivation on account of its habit, foliage and fruit; fine for an untrimmed hedge. 18-24 in.....	.40	4.00
..... \$30 per 100.....		
CALYCANTHUS floridus (Sweet-scented Shrub). H 5-6, S 4-5, June50	5.00
CARAGANA arborescens (Siberian Pea). Pale yellow pea-shaped flowers. H 8-10, S 8, May, June50	5.00
CASSIA marylandica (Wild Senna). Pea-shaped yellow flowers. H 3-4, S 4-525	2.50
CEANOTHUS americanus (Jersey Tea). Sweet-scented white flowers. H 2-3, S 3, July-September50	5.00
CEPHALANTHUS occidentalis (Button Bush). Curious round balls of white flowers in July. H 6-8, S 650	5.00
CERASUS virginiana. A large shrub with brilliant showy fruit; very attractive. H 10-12, S 6-8.50	5.00
CERCIS canadensis (American Red-Bud, or Judas Tree)60	6.00
CHIONANTHUS virginica (White Fringe). H 10-12, S 6-8, May, June	1.50	
CLETHRA alnifolia (Sweet Pepper). Splendid summer-blooming shrub, with deliciously sweet-scented white flowers. H 3-5, S 4, July-September40	4.00
COLUTEA arborescens (Bladder Senna). Rapid grower. H 7-8, S 6-850	5.00
CORNUS (Dwarf or Shrubby Dogwood). Very valuable shrubs on account of their easy growth, luxuriant foliage, bright-colored bark, and showy fruits. Fine for massed and waterside planting.		
*alba sibirica (Red-twigged Dogwood). Each fruit bluish-white. H 6-8, S 6.....	\$0.40	\$4.00 \$25.00
alba Spaethii aurea. Yellow variegated foliage. H 3-4, S 475	7.50
*alternifolia (Blue Dogwood). A large-growing shrub of most beautiful flowers in spring and showy fruit in the fall. H 6-8, S 675	7.50
Kousa (Japanese Dogwood). A white-flowering variety of great beauty and rarity; grows into a small tree.....	1.25	
mas. (Cornelian Cherry). Very showy bright scarlet fruit. H 8-10, S 6-8....	.50	5.00

	Each	Per 12	100
*sanguinea (European Red Osier). Deep red bark; black berries. H 6-8, S 6..	\$0.40	\$4.00	\$25.00
*sericea. Red bark, bluish fruit. H 8-10, S 6-840	4.00	25.00
*stolonifera (Red Osier; Cornel). Dwarf-spreading shrub; white berries. H 4-5, S 540	4.00	25.00
*stolonifera pendula. Pendulous variety of above; distinct and fine50	5.00	30.00
CORYLUS americana (American Hazelnut). H 8-10, S 6	1.00	10.00	
CRATAEGUS (Hawthorn). Very attractive spring-flowering shrubs. Very sweet-scented and showy. They are large shrubs and eventually grow into small trees, but the growth is slow. They are covered with attractive red berries in the summer and fall. H 10-20, S 10-20			
coccinea (American Hawthorn)	1.00	10.00	
CYDONIA Japonica (Japan Quince). Brilliant red. H 4-5, S 560	6.00	
DESMODIUM penduliflorum. An exceedingly graceful shrub-like plant covered with purplish red flowers in summertime when little else is in bloom; strikingly beautiful. H 3-4, S 4.....	.50	5.00	
DEUTZIA candidissima. Double white flowers. H 6-8, S 6, May, June50	5.00	
crenata fl. pl. Double pink flowers. H 6-8 S 650	5.00	
gracilis. Single white flowers. H 2-3, S 3. May50	5.00	
Lemoinei. A dwarf and exceedingly free-flowering shrub, with pure white single flowers. H 3, S 3, May60	6.00	
Wellsii. Pure white double flowers. H 6-8, S 6. May50	5.00	
scabra (Pride of Rochester). Large-flowered Deutzia. A robust form with very handsome double white flowers tinged rose. Excellent for use as a specimen plant. One of the best varieties. H 6-8, S 5, June50	5.00	
DIERVILLA sessilifolia (Native Weigela)..	.50	5.00	
ELEAGNUS angustifolia. Silvery gray foliage, like the Olive. H 10-12, S 8.....	.60	6.00	
longipes. A new and handsome shrub with edible fruit. True variety. H 6-8, S 650	5.00	
umbellata. H 10-12, S 850	5.00	
EUONYMUS alatus (Winged Burning Bush). H 6-8, S 675	7.50	
europaeus (European Burning Bush)....	.60	6.00	
americanus. (Strawberry Bush.) An erect grower that is attractive at all seasons of the year because of its slender green branches. The peculiar, rose-colored fruits, with scarlet pods, make this shrub extremely decorative.75	7.00	
EXOCHORDA grandiflora (Pearl Bush). A rare Chinese shrub with pure white flowers. H 8-10, S 660	6.00	

ORNAMENTAL FLOWERING SHRUBS—Continued

	Each	Per 12	100		Each	Per 12	100
FORSYTHIA Fortunei (Fortune's Golden Bell). Magnificent, vigorous-growing shrub, covered with yellow bell-like flowers before the foliage appears in the spring. Splendid for planting on steep banks, especially above a retaining wall, as some of the branches grow upright while the remainder will hang down over the wall for several feet. H 6-8, S 5, April	\$0.50	\$5.00		bella rosea . Exactly like <i>bella candida</i> in all respects, save that the flowers are pink	\$0.50	\$5.00	
suspensa (Drooping Golden Bell). Long, pendulous branches which hang down over a wall like a vine	.50	5.00		PAVIA macrostachya (Dwarf Horse-Chestnut). Beautiful spreading shrub with large heads of white flowers in June; fine for specimen on the lawn	2.50		
viridissima . This is the erect form of <i>Forsythia</i> . H 8-10, S 6	.50	5.00		PHILADELPHUS (<i>Syringa</i> ; Mock Orange). Vigorous growing with showy white and mostly sweet-scented flowers.			
intermedia . (Hybrid Golden Bell). This variety is a hybrid between <i>F. suspensa Fortunei</i> and <i>F. suspensa</i> , and is considered more handsome than either of its parents. Produces great quantities of golden yellow flowers on its slender, arching branches before the foliage appears. H 6-8, S 6, April	.50	5.00		aureus . Yellow-leaved H 4-5, S 4-5	.60	6.00	
*HALESIA tetraptera (Silver Bell). This is one of the most beautiful-flowering large shrubs in cultivation; pure white bell-shaped flowers. H 15-20, S 8	.60	6.00		coronarius . Very sweet-scented white flowers. H 8-10, S 8	.50	5.00	
HAMAMELIS virginiana (Witch Hazel). Blooms in late fall and early winter. H 6-8, S 6	.50	5.00		Falconeri . Starry white flowers borne in great profusion. H 6-8, S 6	.50	5.00	
HIPPOPHAE rhamnoides (Sea Buckthorn). H 8-10, S 8	.60	6.00		grandiflorus . Large flowers, very showy. H 8-10, S 8	.50	5.00	
*HYDRANGEA arborescens grandiflora . New variety with immense heads of white flowers. H 3, S 3	.75	7.50		Mer de Glace (Sea of Ice). Undoubtedly one of the most beautiful shrubs introduced in recent years. Everyone is familiar with the so-called <i>Syringa</i> or Mock Orange but Lemoine, the great French Hybridizer, has improved this old favorite wonderfully. The flowers are globular, semi-double, of a glistening pure white and deliciously sweet scented. It would be impossible for a shrub to bear more flowers and the smallest plants are covered. People who have seen it flower on our trial ground have been delighted with this shrub	1.00		
paniculata . Distinct from <i>P. grandiflora</i> . A very striking and elegant shrub. H 5-6, S 5	.75	7.50		Mont Blanc . One of the newer dwarf sorts; large white flowers borne in the greatest profusion. H 4-5, S 5	.75	7.50	
paniculata grandiflora . The well-known hardy <i>Hydrangea</i> . H 4-5, S 4.	.50	5.00		Sutzmannii . Large showy white variety. H 8-10, S 8	.50	5.00	
18 to 24 inches	.50	5.00		POTENTILLA fruticosa	.50	5.00	
2 to 3 feet	.75	7.50		*PRIVET, Common . Desirable for hedging, and harder than California Privet	.50	4.50	20.00
quercifolia (Oak-leaved <i>Hydrangea</i>). Very handsome. One of the most picturesque shrubs. H 3-4, S 4	1.00	10.00		Media . A Privet of beautiful habit; fruits immensely	.50	5.00	
HYPERICUM densiflorum . Yellow flowers. H 2-3, S 3	.50	5.00		Polish . Upright vigorous grower and absolutely hardy	.50	4.50	30.00
prolificum . H 2-3, S 2-3	.50	5.00		PRUNUS pissardii (Purple-leaved Plum). Desirable on account of its rich purple foliage. H 10-12, S 8	1.50		
ITEA virginica . Sweet-scented white flowers in early summer. H 4-5, S 4	.50	5.00		PYRUS arbutifolia (Choke Berry). A native shrub of great beauty and easy culture. Covered with white flowers in early spring, followed by bright red berries which last all winter. H 4-5, S 5	.50	5.00	
LILAC (<i>Syringa</i>). Common Purple	.50	5.00		RHAMNUS cathartica (Buckthorn). Strong-growing shrub with black berries. H 8-10, S 8	.50	5.00	
Common White . 2 to 3 feet	.50	5.00		RHODOTYPOS kerrioides . H 4-5, S 5	.50	5.00	
persica . (Persian Lilac). More graceful and more delicate than the preceding variety. The flowers are pale lilac, in panicles 3 to 4 inches broad, and open in late spring. 3 to 4 feet	.60	6.00		RHUS aromatica (Sweet-scented Sumac). H 4-6, S 5	.60	6.00	
persica alba . White Persian Lilac. Small white flowers; similar in other respects to the type. 3 to 4 feet	1.00	10.00		copallina (Shining-leaved Sumac). H 4-6, S 5	.50	5.00	
Japonica . A new and unique species from Japan, attaining the size of a small tree, with large panicles of white flowers; foliage very large, thick and deep green color; blooms a month later than other lilacs	1.00	10.00		Cotinus (Purple Fringe). H 8-10, S 8	.75	7.50	
LONICERA (Upright Honeysuckle). These are very vigorous free-growing shrubs that are very showy and desirable, both on account of their pink or white flowers which are freely produced in the spring and their bright red or orange fruit with which they are covered in the summer. H 8-10, S 6-8				typhina (Common Sumac). H 10-12, S 6	.50	5.00	
fragrantissima . A very early sweet-scented species	.50	5.00		typhina laciniata . New cut-leaved Sumac; very beautiful	.75	7.50	
Morrowii . Flowers pure white; fruit red	.50	5.00		RIBES aureum . (Missouri Currant). Splendid fragrant yellow flowers followed by black fruits, with a bluish bloom. Smooth, shining leaves. H 4-5, S 5. For Pennsylvania sales only	.50	5.00	
Ruprechtiana	.50	5.00		ROBINIA hispida (Rose-flowered Acacia). Extremely free-flowering and attractive. H 4-5, S 5	.60	6.00	
tatarica . Pink flowers	.50	5.00		RUBUS odoratus (Thimble Berry). Splendid foliage and purplish flowers all summer. H 4-6, S 5	.40	4.00	
tatarica alba . White flowers	.50	5.00		SAMBUCUS canadensis (Common Elderberry). Very striking when planted in rich soil. H 6-8	.40	4.00	
Xylosteum (Fly Honeysuckle)	.50	5.00		racemosa . (Red-berried Elder). Distinguished by its warty leaves and large cymes of white flowers. Showy red berries ripen in early midsummer. A splendid sort to plant with <i>S. nigra aurea</i> as the former variety often has ripe fruits when the latter is blooming. H 6-8, S 5-6, May	.60	6.00	

ORNAMENTAL FLOWERING SHRUBS—Continued

	Each	Per 12	100
SPIRAEA arguta. Pure white flowers early in the spring. H 5-6, S 5.....	\$0.50	\$5.00	
Bumalda, Anthony Waterer. A beautiful dwarf flowering shrub of great popularity. "This is a seedling of that variety of Spiraea japonica which is known in gardens as S. Bumalda, and which is distinguished by its dwarf, compact habit, its persistent flowering, and bright red flowers. Anthony Waterer differs from its parent in the deeper, brighter, and more intense color of the flowers. As it begins to flower freely when only a few inches high and continues to produce its large, flat corymbs from July until frost appears, this shrub promises to be a capital addition to the rather short list of autumn-flowering hardy shrubs." H 2-3, S 3. Two-year-old plants.....	.50	5.00	33.00
callosa. Pink flowers all summer. H 3-4, S 4.....	.50	5.00	
callosa alba. Similar to the preceding variety, but with white flowers.....	.50	5.00	
Douglasii. Deep pink spikes of flowers. Fine for massing. H 5-6, S 5 July, August.....	.50	5.00	
Freebelii (Froebel's Spiraea). Free-blooming sort with pink flowers.....	.50	5.00	
opulifolia aurea (Ninebark). Vigorous-growing variety with yellowish foliage; white flowers followed by showy seed-pods. H 8-10, S 6.....	.50	5.00	33.00
Reevesii fl. pl. Double white flowers in May. H 5-6, S 5.....	.50	5.00	
Thunbergii (Snow Garland). The first shrub to flower in the spring; pure white flowers in profusion. Very lovely. H 4-5, S 4.....	.50	5.00	
Van Houttei. A very graceful variety. One of the best; by many people considered the most satisfactory shrub in cultivation; white flowers in the greatest profusion in May. H 6-8, S 6.....	.50	5.00	35.00
STEPHANANDRA flexuosa. A very graceful shrub, with deeply cut, fern-like foliage. H 3-5, S 4.....	.50	5.00	
STEWARTIA pentagyna. A very rare shrub with exquisitely beautiful, large, single white flowers in July. H 6-8..	\$1.75		
SYMPHORICARPOS. The Symphoricarpos are very desirable in the shade or under trees where nothing else will grow. They are covered with white or red berries in fall and winter.			
* racemosus (Snowberry). White-fruited. H 4-5, S 5.....	.40	4.00	25.00
* variegata. Beautiful variegated foliage. H 4-5, S 5.....	.40	4.00	
* vulgaris (Indian Currant). Red-fruited. H 3-4, S 4.....	.40	4.00	25.00
TAMARIX. Tall, slender shrubs with feathery foliage and large panicles of lovely pink flowers in late spring or early summer.			
aestivalis hispida. H 8-10, S 6.....	.50	5.00	
africana. H 8-10, S 6.....	.50	5.00	
plumosus (Japanese Tamarix). H 10-12, S 6.....	.60	6.00	
VIBURNUM dentatum. A most beautiful and satisfactory shrub. H 6-8, S 6.....	.50	5.00	
Lantana. Showy red fruit. H 8-10, S 6.....	.75	7.50	
Opulus sterile (Snowball). H 8-10, S 8.....	.60	6.00	
Oxycoccus (Cranberry Tree). Very showy red fruit. H 8-10, S 8.....	.60	6.00	
WEIGELA amabilis. Light pink. H 6-8, S 8.....	.50	5.00	
candida. White. Decidedly the most desirable of its color. H 6-8, S 8.....	.75	7.50	
floribunda. Crimson. H 6-8, S 8.....	.75	7.50	
hybrida, Eva Rathke. Very valuable ever-blooming variety; large crimson flowers. H 5-6, S 6.....	.60	6.00	
hybrida, Floreal. Pale rose, shaded mauve, throat bright carmine; very showy.....	.60	6.00	
hybrida, Gracieux. White, with sulphur throat, outside and buds salmon-pink. One of the most beautiful Weigelas.....	.60	6.00	
rosea. Pink flowers. H 6-8, S 8.....	.50	5.00	
rosea nana variegata (Variegated-leaved). H 4-5, S 5.....	.50	5.00	
XANTHORRHIZA apiifolia40	4.00	

Ornamental Deciduous Trees

With the exception of varieties marked with an asterisk (*), we do not grow trees. The following list of trees is selected from the best nurseries in the United States. Orders will be shipped from the nearest nursery that can supply the stock ordered, so as to save freight charges and secure quickest possible delivery; where stock is ordered in considerable variety, it is sometimes shipped from two or more nurseries to secure trees of the best quality. We always endeavor to secure the best stock in the market for our customers. The prices quoted are for trees of the most suitable size for transplanting; extra large trees of many varieties can be supplied, but are not recommended. If quick results are desired they can be had by taking small- and medium-sized, but perfectly vigorous and healthy trees and giving them liberal planting; for instance, dig a hole three feet deep and five

feet in diameter for each tree, and fill with all good surface soil, mixed with one-fourth of its bulk of well rotted stable manure.

It costs considerably to plant trees in this manner, but the results justify the expense, and people often pay from \$10 to \$50 each for larger trees, which always fail, generally dying outright within three years, and never making vigorous, healthy trees. Some kinds of trees may be safely planted much larger than others. Magnolias, Beeches, Tulip Trees, and white-leaved Lindens are difficult to transplant and small-sized trees of these should always be selected. Some varieties should always be planted in the fall, others in the spring, and we shall be glad to advise our customers on these and other points in regard to planting.

Lowest net prices will be quoted on trees by the 100 and 1,000 on application.

	Each	Per 12
AILANTHUS glandulosa. Female trees which are almost free from disagreeable odor.....	\$2.00	\$18.00
ALDER, European	2.00	18.00
ANDROMEDA arborea (Sorrel Tree). A scarce and extremely beautiful flowering small tree.	1.25	13.00
BEECH, the noblest of all trees, but of slow growth and difficult to transplant. Small trees should always be selected and well pruned when planted.		
American.....	2.50	
English.....	2.50	
*Purple-leaved.....	4.00	
*Weeping.....	10.00	
BUTTONWOOD. See Sycamore.		
CATALPA Bungei (Umbrella Tree). Umbrella-headed trees used for formal effects.		
Standard.....	2.50	22.00
Large specimens, \$4, \$5, \$7.50 and \$10 each.		
speciosa. Our native variety.....	1.00	10.00
* CHERRY, Double-flowered Pink	2.75	
* Double-flowered White	2.75	
CLADRASTIS tinctoria (Virgilia lutea)	3.50	
CRAB APPLE. The ornamental Crab Apples are undoubtedly the most beautiful small-flowering trees in cultivation; even more beautiful than the popular Magnolias. They are of the easiest culture, hardy; bloom when quite small.		
* Bechtel's New Double-flowered	1.75	
* Common Wild (P. coronaria).....	1.50	
Double White (P. spectabilis).....	3.00	
* floribunda. Single-flowered, pink; one of the most beautiful.....	2.00	
* Parkman's (Pyrus Parkmanii).....	1.75	
* Cypress. Deciduous.....	2.50	
* DOGWOOD, Red-flowering.....	2.50	
* White-flowering	1.00	10.00
ELM, American	2.00	18.00
Camperdown Weeping	4.50	
English	2.50	

ORNAMENTAL DECIDUOUS TREES—Continued

	Each	Per 12		Each	Per 12
FRAXINUS quadrangulata. (Blue Ash). Large tree with bright green, compound leaves which turn yellow in the autumn. Grows rapidly and has a straight trunk which makes it exceptionally well adapted to specimen planting and groups. Not particularly desirable as a street tree			Oak is of very rapid growth, and one of the finest trees in cultivation.		
		\$3.00	Burr, or Mossy Cup	\$4.00	
HONEY LOCUST, American	1.50	16.00	Scarlet. A grand tree with splendid coloring in fall	2.50	
HORSE-CHESTNUT, White-flowering	3.00	32.00	*Pin (<i>Quercus palustris</i>). One of the very finest trees for avenue or lawn planting, and of very rapid growth. The great demand for this tree has made it very scarce.		
KENTUCKY COFFEE TREE (<i>Gymnocladus canadensis</i>)	2.50		6 to 7 feet	2.00	
KOELREUTERIA paniculata	2.50		8 to 10 feet	3.00	33.00
LINDEN, American	2.50	28.00	10 to 12 feet	4.00	
European	2.50		Red	3.00	
Large-leaved (<i>Tilia platyphylla</i>)	3.50		PHOTINIA villosa. A very ornamental tree, covered with red berries in fall and winter....	2.00	
White-leaved Weeping. A splendid pendulous tree	5.50		PLANE. See Sycamore.		
LIQUIDAMBAR styraciflua (Sweet Gum)	2.50		POPLAR, Carolina75	8.00
MAPLE, Ash-leaved (Box Elder)	1.50		Lombardy	1.00	10.00
*Norway	2.50	28.00	Pyramidal (<i>P. Bolleana</i>)	1.75	18.00
Red, or Scarlet	4.00		SALISBURIA adiantifolia (Ginkgo; Maidenhair Tree). A quaint Japanese tree, with foliage like that of a Maidenhair Fern	3.00	
Schwedler's Purple	3.00		SORBUS. See Mountain Ash.		
*Silver-leaved (Water, or Soft)	1.50	16.00	SOPHORA japonica	5.00	
Sugar	3.00	30.00	*SYCAMORE, Oriental. A grand tree either for the lawn or street. Withstands smoke and soot well.	2.00	18.00
*Wier's Cut-leaved	2.50	24.00	THORNS. See Hawthorn, under head of Hardy Shrubs.		
MOUNTAIN ASH, European	1.50		WILLOW, Flame-colored60	6.00
NUTS, Chestnut, American	1.75	18.00	Golden-barked. Weeping	1.50	15.00
Spanish	1.50		Laurel-leaved. Very handsome75	7.50
Filberts, American	1.00	10.00	Regal. White foliage60	6.00
English	1.00	10.00	Weeping <i>Babylonica</i>	1.75	17.50
The Spanish Chestnuts are thriving where the American variety has all been killed.			YELLOW-WOOD. See <i>Cladrastis</i> .		
OAK. The planting of Oaks for ornament has been done but little on account of their supposed slow growth. They grow quite as rapidly as other hardwood trees, and the Pin					

Hardy Climbing Plants

	Each	Per 12		Each	Per 12
ACTINIDIA arguta. A Japanese climbing plant with attractive dark green foliage and a multitude of white flowers having purple centers. Edible fruits follow the flowers.....	\$0.50	\$5.00	LYCIIUM chinense. Matrimony Vine. Excellent for trellises or banks. The small purple flowers in summer are followed by scarlet berries which cling long through the winter. Makes a vigorous growth; if desired, it may be trained as a shrub35	3.50
AKEBIA quinata. Quite ornamental and graceful, with pretty dark leaves and numerous bunches of violet-brown flowers. Pleasing cinnamon fragrance. Prefers a sunny situation50	5.00	*POLYGONUM Auberti. Perfectly hardy plant which covers itself with a quantity of snowy white flowers, borne in long racemes. Remarkable effects can be obtained when this vine is allowed to twine about an old tree. This variety is an improvement on <i>P. baldschuanicum</i> , as its flowers are larger and it is free from the disease which causes so much injury to the other sort75	7.50
AMPELOPSIS quinquefolia. Virginia Creeper. Clings firmly to walls or any support and makes a dense covering because of its large, handsome, green foliage. In the fall the leaves change to brilliant scarlet. One of the most decorative native climbers35	3.50	VITIS æstivalis. American Wild Grape. A tall-climbing vine which makes a strong growth. The leaves are large and distinguished by a reddish brown fuzz on the under side. The berries are small, black, and exceedingly tough skinned50	5.00
Veitchii. Boston Ivy. Grows very rapidly after it is once established, and clings closely to any surface. The large, dark green leaves turn to rich crimson in the fall.			vulpina (<i>V. odoratissima</i>). River Bank, or Frost Grape. Vigorous, tall climbing plant, with sweet-scented flowers. The berries are usually less than half an inch in diameter; quite sour..	.50	5.00
Standard Plants35	3.50	WISTARIA sinensis. Chinese Wistaria. A hardy, tall-growing climber with pale green, compound foliage, and purplish pea-green flowers in clusters a foot long. Usually blooms in May	1.00	10.00
Extra-strong Plants50	5.00	sinensis alba. Has white flowers instead of purple ones; in other respects it is similar to the type	1.00	10.00
ARISTOLOCHIA Siph. Dutchman's Pipe. Produces numerous bunches of brownish colored flowers which bear a slight resemblance to small pipes. The leaves are large and round, hanging so that they overlap each other and thus make a dense screen. 2-yr.	1.00				
CELASTRUS paniculatus. Japanese Bitter-sweet. Valuable because it grows in almost any soil and will succeed as well in shaded places as in sunny positions. The bright red fruits in orange pods usually remain throughout the winter. This variety is not altogether hardy and should be planted in sheltered positions north of Pennsylvania35	3.50			
scandens. American Bittersweet. Branches of this vine are often sold for Christmas decorations, because of the bright orange-colored pods and their attractive scarlet seeds. The vine makes a rapid growth35	3.50			
CLEMATIS Henryi. Large creamy white flowers of remarkable beauty	1.00	10.00			
Jackmanii. Great velvety purple flowers are borne in profusion. This is the large-flowered sort commonly planted	1.00	10.00			
virginiana. Climbs from 12 to 15 feet, and bears an abundance of white flowers35	3.50			

Roses for Fall Planting

Dormant Hardy Roses can be supplied from October to December 1

We have decided to offer Dormant Roses for fall delivery only, as we find many of our customers delay ordering in the spring until it is too late to plant. It is important in planting Dormant Roses to cut them well back; one-half the tops should be cut off when planted in the fall, and any wood that winter-kills should be cut off early in the spring.

The varieties of Roses now offered are innumerable, and this great list is added to every year by a host of new varieties which make an intelligent selection of varieties impossible to most buyers. We have reduced our lists to a few of the very best varieties, and no one can make a mistake in selecting any of the sorts offered.

Hybrid Tea and Tea Roses should be planted in the spring, and a selection of the best varieties is offered in our Spring Catalogue.

Hybrid Perpetual Roses

Baroness Rothschild. Large, pale rose blooms of superb shape, each set in a cup of lovely foliage. Delightfully fragrant.

Captain Christy. The plump buds have backward curling petals, which show perfectly the contrast of light and dark pink. When open the blooms are darker toward the center. The plant is rather dwarf but is exceedingly vigorous and produces a great number of blooms annually.

Captain Hayward. Bright crimson-carmine blooms of perfect form; exceedingly fragrant.

Clio. The large globular flowers are borne on long stems, making this a valuable variety for cutting. The color is satiny flesh, with pink center.

Frau Karl Druschki. One of the most popular white Roses. The blooms are quite large, sometimes exceeding 5 inches in diameter. The growth of the plant is unusually strong; it bears great quantities of blooms in June and occasionally will bloom in the autumn.

General Jacqueminot. An old variety with large, full blossoms, brilliant scarlet-carmine, with deeper veinings near the petal bases. Often called the "Jack Rose" and considered one of the best of its color and class. No rose collection is complete without it.

George Ahrends. The plant makes a strong growth, and bears an abundance of well-formed pink flowers.

Magna Charta. Noted for its fragrance and abundance of blooms. The color of the flowers is a rosy pinkish-carmine.

Mme. Gabriel Luizet. Light, satiny pink blooms of splendid form. A variety which is not found in many collections.

Mrs. John Laing. Soft pink blooms, extremely large and exceedingly fragrant. Most attractive when in bud, as the petals are quite long. The plant makes a strong growth.

Ulrich Brunner. The light red flowers are borne in profusion, on long stems. The color of this flower is quite distinct from other red varieties in this list.

Prince Camille de Rohan. Very dark, velvety crimson, almost black. Many experts consider this to be the best dark Rose in existence.

Paul Neyron. Dark rose; of enormous size; perhaps the largest of all.

Prices, except where noted, for strong, 2-year, field-grown plants, 75c each; \$7.50 per 12.

Miscellaneous Varieties

Persian Yellow. An Austrian Briar Rose, which is very popular because of its splendid golden yellow color. Although the flowers are only medium in size they are extremely full. 90c each; \$9.00 per 12.

Harrison's Yellow. Brilliant golden yellow, semi-double flowers completely cover the sturdy plant in spring. A splendid variety. 90c each; \$9.00 per 12.

ROSA Rugosa. Forms an upright shrub, with spreading branches densely covered with spines and prickles. The leaves are wrinkled, dark lustrous green above, lighter beneath. The blooms are purple or white, and ordinarily 3 inches or more across. They are followed by bright red fruits which cling to the bush a long time. 75c each; \$7.50 per 12.

rugosa alba. Originally imported from Japan. Pure white flowers with five petals, highly scented, followed later by pretty berries. 90c each; \$9.00 per 12.

Bianc double de Coubert. One of the best Rugosa types. The blooms are often 4 to 5 inches in diameter. Semi-double; pure white in color; attractively fragrant. 90c each; \$9.00 per 12.

Conrad Meyer. When fully opened the blooms are clear silvery rose; they possess a fragrance which is delicately penetrating. 90c each; \$9.00 per 12.

ROSA carolina. The well-known American Wild Rose which produces quantities of pink blooms in July. 50c each; \$5.00 per 12.

lucida. A dwarf form of *R. carolina*. The attractive bright pink flowers are followed by brilliantly colored berries. 50c each; \$5.00 per 12.

multiflora. A beautiful white Japanese Rose which is frequently used as a climber. 50c each; \$5.00 per 12.

rubiginosa. The single bright pink flowers are borne in small clusters. The foliage is blue-green, tinged with purplish-red. 35c each; \$3.50 per 12.

setigera (Prairie Rose). Valuable climbing sort, which attains a height of 6 feet. The single, deep rose flowers are borne in great abundance. 50c each; \$5.00 per 12.

spinosisima (Scotch Rose). Flowers are borne singly but are occasionally a light pink or yellow. Ordinarily white, they are closely arranged along the stems. The blooms are followed by black fruit. This Rose is considered the best hardy substitute for the matchless Cherksee Rose of the South. Pot-plants, \$1.00 each.

Moss Roses

These Roses are hardy and vigorous, thriving in almost any soil. Prune only the very old canes, as flowers are produced only on canes which are more than two years old.

Blanche Moreau. Large, pure white flowers are borne in clusters. Both flowers and buds are heavily mossed. 75c each; \$7.50 per 12.

Crested Moss. Deep pink flowers of delightful fragrance. 75c each; \$7.50 per 12.

Salet. Rose-pink, with very double blooms. 75c each; \$7.50 per 12.



Frau Karl Druschki Roses.

Climbing and Rambler Roses

Climbing and Rambler Roses are valuable for covering porches, verandas, side-walls, pillars, fences, etc. They are unequalled as ornamental plants and will be found as useful for this purpose as any other climber. They are bardy and require very little pruning.

CLIMBING AMERICAN BEAUTY

A new Rose of great merit. A cross between American Beauty and an unnamed seedling. Color a rosy crimson, similar to its popular parent, and with the same exquisite fragrance, a quality rarely found in Climbing Roses. The plant is of strong habit of growth making shoots from 10 to 15 feet in one season, and as hardy as an oak. The flowers are from 3 to 4 inches in diameter, of fine form, and are produced in great profusion, not only in May and June, but there is a fair sprinkling of flowers throughout the growing season. **75c each; \$7.50 per 12.**

CLIMBING ROSE, LADY GAY

A new Rambler variety of remarkably vigorous growth, with flowers of a delicate cerise-pink, passing to soft, tinted white. The effect of a plant in full bloom with the combination of the soft white flowers, cherry-pink buds, and deep green of the foliage is indeed charming. **Strong two-year-old plants, 50c each; \$5 per 12.**

NEW RAMBLER, TAUSENDSCHOEN

This is an entirely distinct break, not only in ramblers, but in climbing Roses generally. The individual flowers are very large for this type of Rose, being fully 3 inches across, and of a most elegant and graceful form, not stiff or unnatural, but as beautiful as a semi-double azalea. In color it is a most delightful shade of soft pink when first opening, changing to paler pink when fully expanded and finally to white. These are produced in trusses of from ten to fifteen flowers. **2-year-old plants, 60c each; \$6.00 per 12.**

AMERICAN PILLAR

A new single-flowering variety of great beauty, which appeals to everyone. The flowers are of enormous size, 3 to 4 inches across, of a lovely shade of pink, with a cluster of yellow stamens. These flowers are borne in immense clusters, and a large plant in full bloom is a sight not easily forgotten. They last in perfection a long time, and are followed by brilliant red hips or berries, which are carried late into the winter; and as the plant frequently retains its lovely green foliage until the end of November, it forms a beautiful decorative subject throughout the autumn months. **Strong, two-year-old plants, 60c each; \$6.00 per 12.**

AVIATEUR BLERIOT

(The New Yellow Rambler)

We have discarded the old Yellow Rambler in favor of this new variety, in which we have a strong-growing plant with beautiful glossy, insect- and disease-proof foliage, and bearing large clusters of medium-sized full double flowers of a saffron-yellow, deepening to an almost golden yellow at the center. **90c each, \$9.00 per 12.**

CRIMSON RAMBLER

It is strikingly beautiful, absolutely hardy and no Rose can be used for more purposes. As a climber it is unsurpassed, perhaps unequalled; as a pot-plant for forcing, the florists are finding it extremely popular. By keeping it cut down it makes a splendid bedding Rose, and a hedge of it is a most beautiful object. **60c each; \$6.00 per 12.**

DOROTHY PERKINS

This is a splendid new shell-pink climbing Rose. It attracted much attention at the Pan-American Exposition, where a bed of fourteen-months-old plants produced a show of bloom unequalled by any other variety. This new Rose is of the same strong habit of growth as Crimson Rambler, and the flowers are borne in clusters of 30 to 40, and sometimes even 50 to 60. The flowers are large for a Rose of this class, very double, sweet-scented and of a beautiful shell-pink. Raised from seed of Rosa Wichuraiana and crossed with that grand old Rose, Mme. Gabriel Luizet. Absolutely hardy. The individual flower is larger than the Crimson Rambler, and is a beautiful shell-pink in color. **50c each; \$5.00 per 12; \$40.00 per 100.**

HIAWATHA

Distinctly different from other Ramblers. Its small, single flowers—deep ruby-crimson, wonderfully bright—accentuated by a white eye—are uniquely borne on long trails of 40 to 50. This is a charming variety destined to become very popular among Rose lovers. Lovers of single Roses will be delighted with it. In our opinion this Rose is the best and most attractive of all the recent Wichuraiana and Rambler hybrids, which have been so freely offered. **50c each; \$5.00 per 12.**

DR. W. VAN FLEET

A Rose, which on account of its dainty color and exquisitely shaped buds and flowers, appeals to everyone. The long pointed buds are of a rich flesh-pink on stems 12 to 18 inches long; splendid for cutting. **60c each; \$6.00 per 12.**

WHITE DOROTHY

Among Rambler Roses, none has justly gained greater popularity than the beautiful pink Dorothy Perkins. The White Dorothy is a duplicate, in all respects save its color, which is a clear, glistening white. A decided acquisition to this class of Roses. Among the multitude of new Roses offered this is one of the few worth planting. **Strong, two-year-old plants, 50c each; \$5.00 per 12.**

EXCELSA

(Red Dorothy Perkins)

This is a most beautiful Rose and we look to see it supersede Crimson Rambler as soon as it is better known. The color is clear, bright crimson with no trace of magenta, and the foliage is always clean and glossy, with never any of the mildew which sometimes makes Crimson Rambler unsightly. **50c each; \$5.00 per 12.**

PAUL'S SCARLET

The best of the newer scarlet climbers and a real improvement on the older sorts. **\$1.00 each.**

ROSA WICHURAIANA

In some respects this Rose, which is also known as the "Memorial Rose," is better than Crimson Rambler, although it lacks the brilliant color of its more advertised contemporary. As a climber for covering porches, trellises and arches, and as a creeper for covering steep banks or any ground needing covering, it is unequalled. The foliage is a lustrous shining green. In bloom the plant is literally covered with exquisitely beautiful single white flowers which are followed by an abundant crop of bright red hips or berries, which remain on the plant all winter. The Rose is entirely free from attacks of insects or disease, and is absolutely hardy, root and branch. **Strong two-year-old plants, 60c each; \$6.00 per 12.**

ROSA WICHURAIANA HYBRIDS

WICHURAIANA RUBRA. Long, green branches; leaves medium size, glossy green, large clusters of single flowers, 1½ to 2 inches in diameter, bright scarlet petals tinted orange-red, white at the base; numerous orange-red stamens; flowers in June. **60c each; \$6.00 per 12.**

ROSE-PINK ROAMER. This is a hybrid of the Sweetbrier, and carries its characteristics in bloom, while the growth, which is very rampant, partakes mere of the Wichuraiana. The single flowers which are produced in close heads are nearly 2 inches in diameter, bright rich pink with almost a white center which lightens up the orange-red stamens producing a fine effect. **50c each; \$5.00 per 12.**



Wichuraiana Roses.

Please Read Before Ordering

ORDERS. All orders are accepted by the Elliott Nursery Company subject to the following terms and conditions:

TERMS OF PAYMENT. Our terms of payment are invariably cash on delivery. This does not mean that we ship C. O. D., as we will not do so under any circumstances. We deliver the goods and mail bills at the same time, and expect payment within a few days. People unknown to us will please send cash or reference with their order.

PRICES AND PACKING. Prices in this catalogue are made subject to stock offered being unsold when ordered, and include all charges for packing trees, shrubs, plants, and bulbs.

Six plants of a kind will be furnished at the dozen rate; 50 or more at the 100 rate; 500 or more at the 1,000 rate. Less than 6 plants of one kind or variety will be sold only at the single rate.

All prices f. o. b. shipping point.

FORWARDING. Shipments will be forwarded exactly as directed, but when without instructions we will use our best judgment and will forward by shortest and safest route. We recommend that all Herbaceous Plants be shipped by express.

RISK. All goods are at the customer's risk after they are delivered to the forwarding company and we receive their receipt for the shipment in good condition.

CLAIMS FOR DAMAGES WHILE IN TRANSIT must be made to the delivering Company. Have the delivery agent note the damaged condition on the freight bill and promptly present your claims to the transportation company. Send us copy of all papers so we can help secure prompt settlement.

PARCEL POST. Small shipments can be sent by Parcel Post. All such shipments will be sent insured, insurance and postage to be paid by the customer.

SHIPPING DIRECTIONS. Please give exact shipping directions, stating whether the stock is to be shipped by freight or express and by what route. Early orders for trees and bulbs can be shipped by freight.

INSPECTION AND FUMIGATION. Our stock is regularly inspected, and certificates will be sent with each shipment. Stock will be fumigated when requested or when the state laws require it.

IMPORT ORDERS are taken subject to failure of crops and to restrictions of quarantines promulgated by the Federal Horticultural Board.

NO AGENTS EMPLOYED. From time to time it has been reported to us that people have represented themselves as our agents in various parts of the country. We employ no agents whatever, but do an exclusive retail business direct with our customers.

GUARANTEE. We guarantee all nursery stock furnished by us to be first class, true to name. We do not guarantee the stock to grow, neither do we guarantee the result in any way. No complaint will be entertained that is not made immediately upon receipt of stock. There are so many causes for failure, over which we have no control, that we can assume no responsibility after the stock is delivered in good order to the transportation company. Poor soil, changeable weather, ignorant or careless culture—all contribute to failure. A catalogue as comprehensive as this must of necessity offer some varieties of difficult culture; when these are ordered we presume the people ordering have the knowledge needed for that culture. Successful gardening requires knowledge, enthusiasm, and perseverance, and these we cannot supply.

PLEASE PRINT YOUR NAME AND ADDRESS on your order. Many times it is extremely difficult to read these two important parts of an order, and the shipment may go astray.



ELLIOTT NURSERY COMPANY

Magee Bldg., 336 Fourth Ave.

PITTSBURGH, PENNSYLVANIA