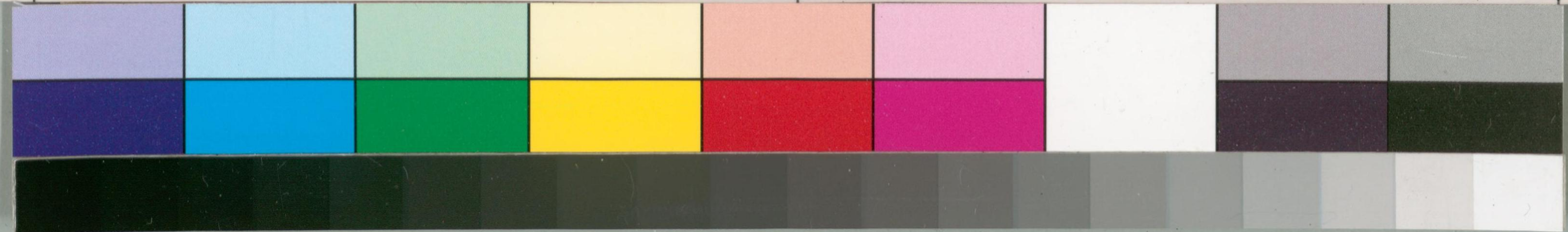


Handwritten text on a vertical strip of aged paper, likely a document fragment or envelope flap. The text is written in a cursive script, possibly Japanese or a related East Asian style, and is oriented vertically. The characters are dark and somewhat faded, making them difficult to decipher precisely. The strip is approximately 30 cm long and 2 cm wide.



Handwritten text in cursive Japanese calligraphy (sōsho) on aged paper. The text is arranged in approximately 12 vertical columns, reading from right to left. The characters are highly stylized and fluid, characteristic of the cursive style. The paper shows signs of age, including some staining and discoloration.

