

Handwritten text in Arabic script, likely a religious or philosophical treatise. The text is written in a cursive style and spans the width of the page.

Handwritten text in Arabic script, continuing the text from the previous page. The text is written in a cursive style and spans the width of the page.

بسم الله الرحمن الرحيم
الحمد لله رب العالمين
والصلاة والسلام على
سيدنا محمد وآله الطيبين
الطاهرين
الذين هم خاتم النبيين
مبعوثين في كل جنس
وملة
والصلاة والسلام على
سيدنا محمد وآله الطيبين
الطاهرين
الذين هم خاتم النبيين
مبعوثين في كل جنس
وملة
والصلاة والسلام على
سيدنا محمد وآله الطيبين
الطاهرين
الذين هم خاتم النبيين
مبعوثين في كل جنس
وملة

بسم الله الرحمن الرحيم
الحمد لله رب العالمين
والصلاة والسلام على
سيدنا محمد وآله الطيبين
الطاهرين
الذين هم خاتم النبيين
مبعوثين في كل جنس
وملة
والصلاة والسلام على
سيدنا محمد وآله الطيبين
الطاهرين
الذين هم خاتم النبيين
مبعوثين في كل جنس
وملة
والصلاة والسلام على
سيدنا محمد وآله الطيبين
الطاهرين
الذين هم خاتم النبيين
مبعوثين في كل جنس
وملة

بسم الله الرحمن الرحيم
الحمد لله رب العالمين
والصلاة والسلام على
سيدنا محمد وآله الطيبين
الطاهرين
الذين هم خاتم النبيين
مبعوثين
على كل قبيلة
والله اعلم
بما يعلنون

الحمد لله رب العالمين
والصلاة والسلام على
سيدنا محمد وآله الطيبين
الطاهرين
الذين هم خاتم النبيين
مبعوثين
على كل قبيلة
والله اعلم
بما يعلنون

Handwritten text in Arabic script, likely a religious or philosophical treatise. The text is written in a cursive style and spans the width of the page.

Handwritten text in Arabic script, continuing the text from the previous page. The text is written in a cursive style and spans the width of the page.

Handwritten text in a cursive script, likely a historical document or letter. The text is written in a dark ink on aged, yellowish paper. It consists of approximately 14 lines of text, starting with a long horizontal line that may be a signature or a decorative flourish. The script is dense and flowing, characteristic of early modern cursive.

Handwritten text in a cursive script, continuing from the previous page. The text is written in a dark ink on aged, yellowish paper. It consists of approximately 14 lines of text, starting with a long horizontal line that may be a signature or a decorative flourish. The script is dense and flowing, characteristic of early modern cursive.

Handwritten text in a cursive script, likely a historical document or letter. The text is written in a dark ink on aged, yellowish paper. It consists of approximately 15 lines of text, starting with a large initial letter 'E' on the left side of the page.

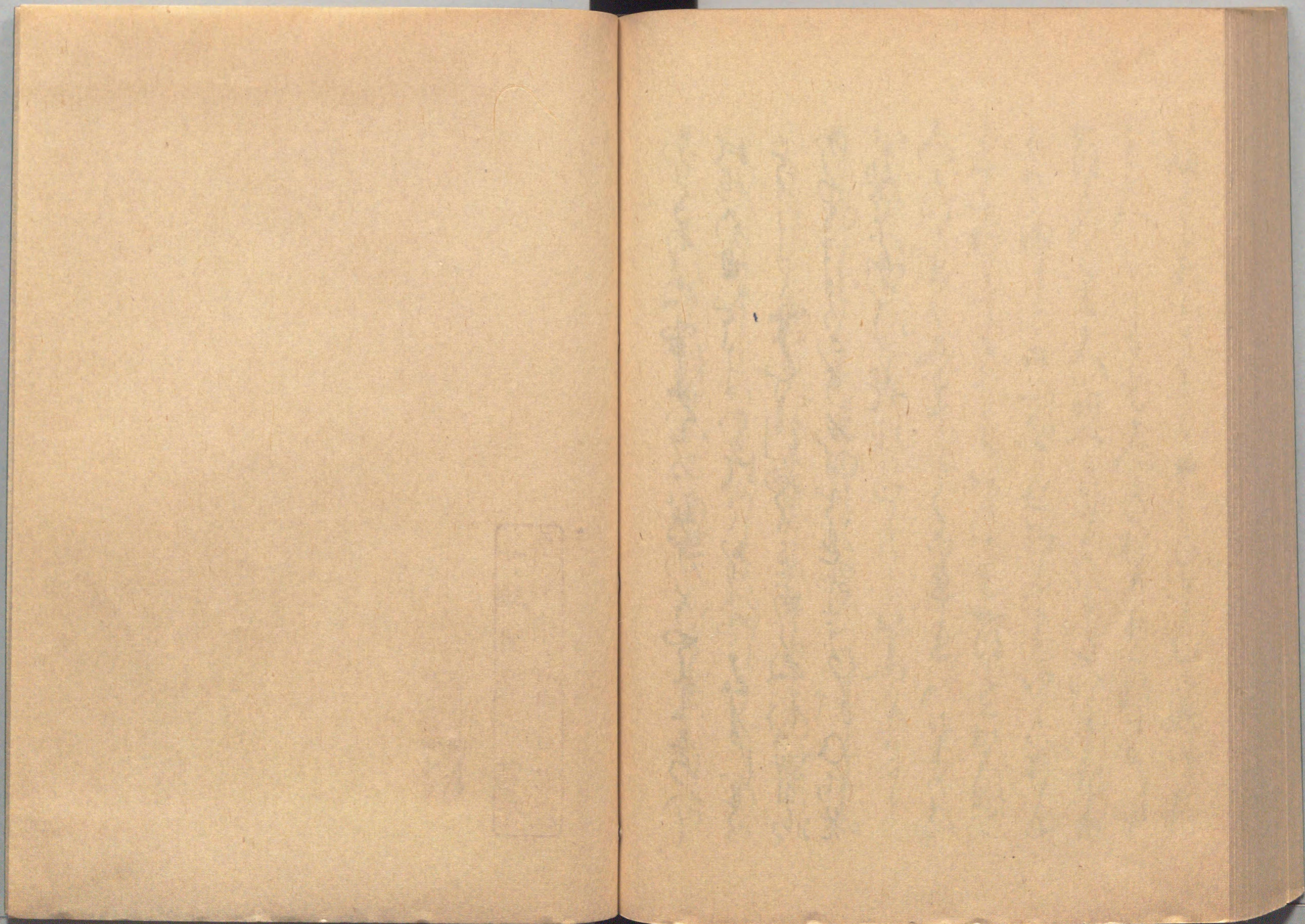
Handwritten text in a cursive script, likely a historical document or letter. The text is written in a dark ink on aged, yellowish paper. It consists of approximately 15 lines of text, starting with a large initial letter 'E' on the left side of the page.

Handwritten text in a cursive script, likely Persian or Urdu, covering the left page of the manuscript. The text is written in dark ink on aged, yellowish paper.

Handwritten text in a cursive script, likely Persian or Urdu, covering the right page of the manuscript. The text is written in dark ink on aged, yellowish paper.

Handwritten text in a cursive script, likely a historical document or manuscript. The text is written in a dark ink on aged, yellowish paper. It consists of approximately 12 lines of text, starting with a large initial letter. The script is highly stylized and characteristic of the Ottoman or Persian calligraphic tradition.

Handwritten text in a cursive script, likely a historical document or manuscript. The text is written in a dark ink on aged, yellowish paper. It consists of approximately 12 lines of text, starting with a large initial letter. The script is highly stylized and characteristic of the Ottoman or Persian calligraphic tradition.



尊經閣叢刊寢覺
原本侯爵前田家藏

限定部數五百
之內第三八號

