

J-Report-39

14 November 1945

J-X-39

DIESEL AUTOMOTIVE CO., HINO PLANT (90.17-2044)  
(35°41'N - 139°24'E)

Map Ref: 5954II, Plan Photo: 211

Team PIC-J (13 November 1945)

Photos: PIC-J-15:1-4

J Sketch 30

The F/A as shown in sketch is essentially correct. The plant produced 100 armored half-track personnel carriers per month. Production slacked off in March due to shortage of food and other supplies. Fire bombs were dropped on 1 Aug. burning the mess hall and school. Dispersion of machinery was started towards the end of March.

JX-39  
✓ - Sketch - 30

70-17  
2044

LST/jh

ADVANCE INTELLIGENCE CENTER  
CinCPOA Advance Headquarters  
Care of Fleet Post Office  
San Francisco, California

CONFIDENTIAL

10 May 1945 - Serial GEOG-100900

MEMORANDUM

From: Lt(jg) Leonard S. Tyson, Geographic Section.  
To: Lt. Myron Pauley USNR, Interpron Two.  
Subject: Identification of Targest in Tokyo Area: Hino and Inagi.  
Reference: (a) Your request for identification of facilities shown in prints.  
Enclosure: (A) Rough sketch of Nippon Heavy Industries Co., Ltd.

1. Print 3PR4M37A-2:5 - XXI Bom Com - Plant confirmed as Target No. 2089, Tama Factory of Tokyo No. 2 Arsenal. Known address is Inage Mura, Minami Tama Gun, Tokyo Prefecture. Photo location and address coincide.

2. Print 3PRM/M7-2:10 - XXI Bom Com - This installation is Target No. 2044, Nippon Heavy Industry Co., also called Diesel Automotive Company. The factory is located on the north side of the road leading from Hino to Hachioji and is between the two towns of Hino and Hinoda. A reliable POW reports that this plant is manufacturing M-97 medium tanks, M-95 light tanks and six ton prime movers (possibly Model 98). It is also reported to be producing and assembling motors and bodies. Guns for tanks came from Sagami arsenal. Plant is reported to be affiliated with the Osaka Arsenal. Employment is over 2,000. Plant was built in 1940. Three chief buildings were: administration building, a small foundry, and a large shop housing the machine and assembly areas. The latter has a concrete floor and concrete walls. Windows are about five feet high and start about five feet from the ground. Roof is zinc with flat skylighted areas. For identification of individual buildings, see enclosed sketch of plant.

*Leonard S. Tyson*

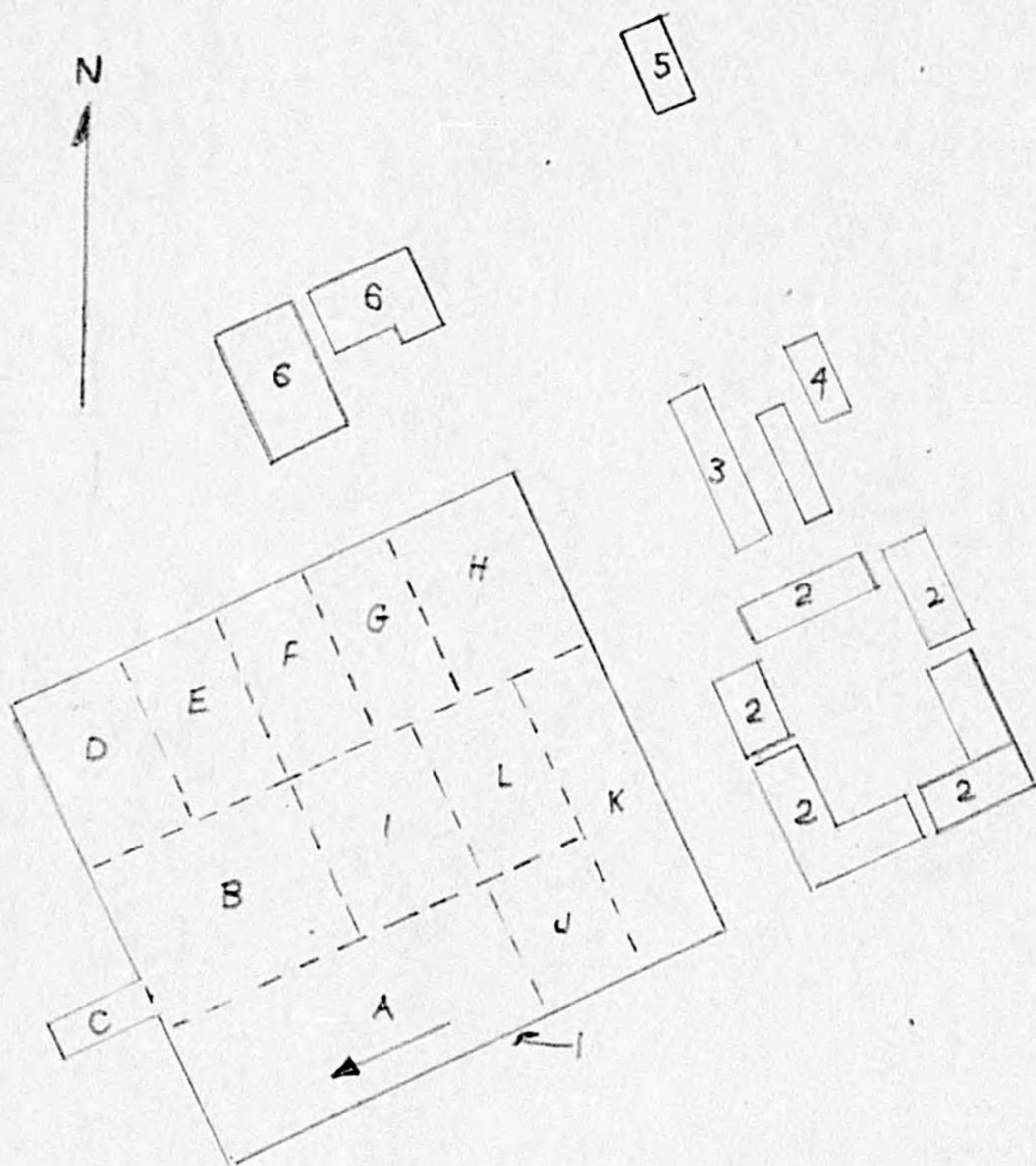
LEONARD S. TYSON  
Lt(jg), USNR

ROUGH SKETCH

NIPPON HEAVY INDUSTRIES CO., LTD.

L E G E N D

1. Main Shop
  - A. Tank and prime mover assembly. Arrow indicates direction of flow.
  - B. Engine assembly
  - C. Engine test
  - D. Lathes
  - E. Drills
  - F. Gear-cutters
  - G. Grinders
  - H. Heat treatment
  - I. Parts inspection
  - J. Inspection of materials and of parts received from sub-contractors
  - K. Materials storage
  - L. Presses
2. Administration buildings
3. Mess hall
4. Dispensary
5. Small foundry
6. Storehouses



Enclosure A