

COP. ALI 3209

DEC 3 1953  
City of Trade

# Survey of

# Drayton Valley



TOWN  
OF  
DRAYTON VALLEY

*Prepared By*

INDUSTRIAL DEVELOPMENT BRANCH  
DEPARTMENT OF INDUSTRY & DEVELOPMENT

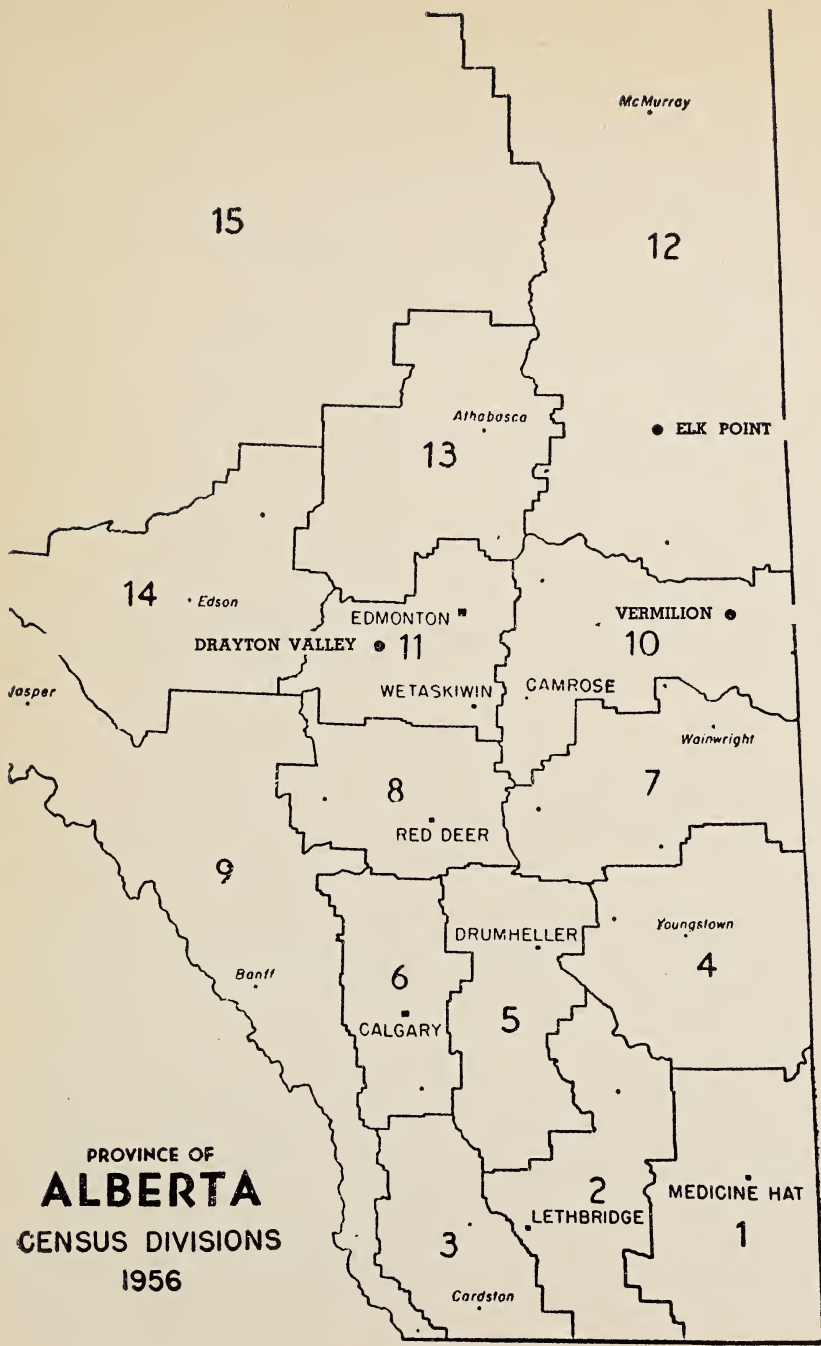
Government of the Province of Alberta





Digitized by the Internet Archive  
in 2015

<https://archive.org/details/surveyofdraytonv00albe>



PROVINCE OF  
**ALBERTA**  
 CENSUS DIVISIONS  
 1956

# Town of Drayton Valley

(Revised September 1963)

## 1. LOCATION

Section 17-49-7-W5 in Census Division No. 14. This location is 87 miles southwest of Edmonton on Highway No. 57.

## 2. ALTITUDE

2,807 feet                  Latitude 53/13                  Longitude 114/59

## 3. TEMPERATURE

Average summer - 60.13 degrees F.

Average winter - 10.14 degrees F.

Average Annual - 36.8 degrees F.

## 4. RAINFALL

Average annual rainfall - 12.34 inches.

Average annual snowfall - 52.9 inches.

Average annual percipitation - 17.63 inches.

(Note - Section 3 and 4 taken from the nearest weather station at Edmonton.)

## 5. GEOLOGY

The Drayton Valley area is underlain by sedimentary rocks of Tertiary Age, known as the Paskapoo formation. These sediments consist of sandstone, shale, thin layer of bentonite and thin coal beds. The surface is covered with glacial drift which is clayey in character and deposited from continental glaciers which moved in from the Northwest Territories.

## 6. SOIL

Drayton Valley is in the dark grey soil zone.

**Vegetation** - Mainly woodland is which the tree growth is frequently denser and has more evergreens than in the black zone.

**Soil Profile** - Generally variable, ranging from nearly black to grey. The surface horizon consists of a thin layer of semi-decomposed leaf litter, which may be absent in burned over areas, underlain by a mineral horizon that can usually be divided into two parts. The upper part may be black, grey black, or dark brown. The lower part is frequently somewhat leached of organic matter and considerably greyer than the upper part. The total depth of these surface horizons averages about 10 to 12 inches. The sub-soils are generally dark brown in color and lime is found at depths of about 30 to 50 inches.

**Fertility** - These soils are generally not as rich as those of the black zone. Leaching of the surface horizons has resulted in the loss of some plant nutrients. Nitrogen, phosphorus and sometimes sulphur may be deficient.

**Land Use** - A system of mixed farming that includes legumes and grasses in crop rotation, supplemented with applications of fertilizer when required, should be practised for best results.

## 7. HISTORY

The Town of Drayton Valley was originally named "Power House", but because of a similar name given a town in British Columbia it was changed and the new name was derived from Drayton, England. The original

townsite was situated one and one-half miles down in the valley, but was moved to the top of the hill.

First settlers were lumbermen, arriving in 1907 and 1908. Large trees and the North Saskatchewan River enabled them to make a living. Logs were floated down the river to the sawmills at Edmonton. The next settlers were trappers. An abundant amount of furs were shipped out every year up until 1920 when the price of furs dropped to an uneconomical level. Since there were no roads in the district these early settlers walked to Edmonton or floated their furs down the river on rafts. On their return trip they either walked or took the train to Rocky Mountain House, built another raft and floated down with their yearly supplies.

In 1911 an English syndicate was organized to build a power dam six miles south of Drayton Valley on the North Saskatchewan River. The project was abandoned due to the outbreak of the First World War.

In 1930 the Anglican Church established a mission in the hamlet. The money for the upkeep of this mission came from England. The church hired a nurse to supply the medical needs of the community, and built a residence for her. The first church built in the district was a branch of The Church of God.

In 1930 there were 30 lumber camps, employing between 300 and 400 bush workers. This was the main industry until 1945. Mixed farming soon started in the cleared timber areas and remained the principal industry until oil was discovered in 1953. At that time there were only 75 permanent residents in the hamlet. By the end of the year there were over 3,000 workers. Accommodation had to be found and many lived in trailers until homes could be built.

Drayton Valley was incorporated as a town on February 1, 1957.

## 8. LIVING CONDITIONS

Drayton Valley is located on a hill overlooking the North Saskatchewan valley. It is a comparatively new town, and all business and residential areas are well planned. Main streets are wide and gravelled. All the new homes being built are mostly stucco or wide board. There are a number of make-shift homes which were built when the town started to grow, but they are rapidly disappearing.



A view of Drayton Valley's busy main thoroughfare.

Upland birds and big game are plentiful. The streams and lakes are well stocked for the fisherman.

**9. ADMINISTRATION**

The town is governed by a mayor elected for a two year term and six councillors, two elected each year for a three year term. The town manager and secretary-treasurer administer the policies set by the council.

**10. LAWS AND REGULATIONS**

The town hires two police constables.

The R.C.M.P. police the rural areas and highway.

Two resident police magistrates.

One justice of the peace.

Building Regulations - The National Building Code is followed; there is also a zoning by-law. All new buildings, repairs or removal of buildings must be approved by council after which a permit is issued.

Electrical installations must comply with the requirements of the Alberta Electrical Protection Act.

Sanitary installations must comply with the Provincial Health Regulations.

Gas installations must comply with the Alberta Gas Protection Act.

**11. FIRE PROTECTION**

The fire brigade consists of a fire chief and 17 volunteer firemen.

Equipment - One 1957 - 625 GPM pumper with 500 gallon tank, 1,400 feet of 2½ inch hose, 600 feet of 1½ inch hose, ladders, axes, crowbars, boots, coats, etc.

Water Supply - Water is obtained from wells and pumped into a 160,000 gallon elevated tower and a 160,000 gallon reservoir with a combined total storage of 320,000 gallons.

There are 46 fire hydrants conveniently located throughout the town.

**12. TAX STRUCTURE**

	<b>1963 Net Assessment</b>			
Land, 100% value .....	\$			
Improvements .....	636,740			
Business .....	2,680,790			
Power .....	722,910			
Pipelines .....	40,951			
	56,547			
Total Assessment .....	\$4,137,938			
Mill Rate - <b>Municipal</b>	<b>25</b>	<b>School</b>	<b>Hospital</b>	<b>Total</b>
	25	22	3	50 mills

**13. AREAS**

Total area of town - 980.11 acres.

Streets and roads - 150 acres.

Parks and playgrounds - 45.6 acres.

### Miles of Roads, Streets and Lanes

	Asphalt	Gravel	Improved Earth	Other	Total
Roads and Streets	1.5	12.5	.5		14.5
Lanes		6.25	2.5	.5	9.25
				Total Miles	23.75

### 14. SEWER AND WATER MAIN MILEAGE

Storm Sewers - .5 miles.

Sanitary sewers - 9.5 miles.

Water mains - 8.75 miles.

### 15. POWER

Three phase 60 cycle power is supplied to the town under franchise by Calgary Power Limited.

#### Domestic Rates

First 20 KWH or less used per month - \$2.60 gross minimum, subject to a 30c prompt payment discount, making - \$2.30 net minimum.

All over 20 KWH used per month - 1.5c net per KWH.

Discount - (as shown above) applies on any bill paid within 10 days of date rendered.

Connection charge - \$1.00.

Reconnection charge - twice the net minimum charge.

#### Commercial Rates

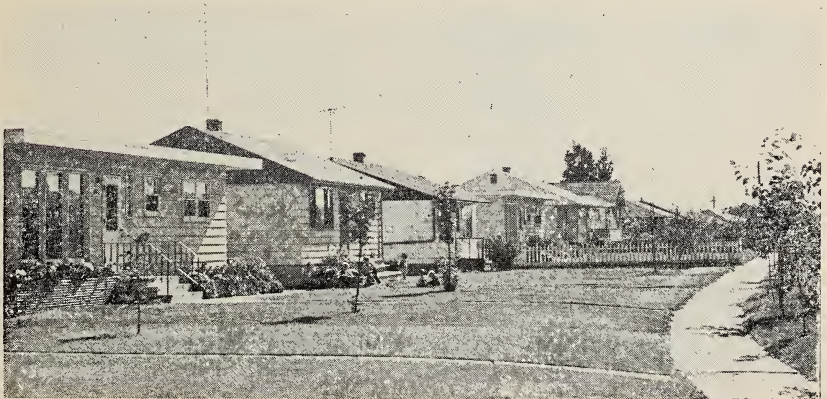
Demand charge - \$1.00 per KVA of installation.

Energy charge - First 80 KWH per month per KW - 5c per KWH.

Excess KWH per month per KW - 1½ c per KWH.

Minimum monthly charge - is the demand charge but not less than the domestic service minimum for the same community.

Discount - 10% within 10 days based on even dollars of total monthly bill, with a minimum discount of 30c per month.



There are many new houses in the residential area.

Consumer's deposit - twice the gross monthly minimum charge.

Reconnection charge - twice the net minimum monthly charge.

### Power Rates

Demand charge - Per KVA of installation (monthly charge) - \$1.00 (one motor horsepower or one kilowatt in heating apparatus considered equal to one kilovolt ampere (KVA).

Energy charge - First 50 KWH used per month per KVA of installation - 5c per KWH.

Next 50 KWH used per month per KVA of installation - 3 1/3c per KWH.

All over 100 KWH used per month per KVA of installation - 1 2/3c per KWH.

Discount - 10% within 10 days, based on the dollars of total bill with minimum discount of 30c per month.

Minimum charge - \$3.30 gross; \$3.00 net of the amount of the service charge, whichever is greater.

Consumer's deposit - \$2.00 per KVA of installation and not less than \$6.00, or at the company's option, twice the estimated bill.

Reconnection charge - \$6.00.

## 16. WATER

Water is obtained from four wells and pumped into a 160,000 gallon elevated tower and a 160,000 underground reservoir. The water is chlorinated and pumped into the water mains.

### Rates

First 3,000 gallons or less used per month - \$3.00.

Next 2,000 gallons used per month - 90c per M gallons.

Next 5,000 gallons used per month - 70c per M gallons.

Over 10,000 gallons used per month - 50c per M gallons.

Sewer charge - \$1.50 per month. Each additional bath - \$1.50 up.

### Water Analysis

### Parts per Million

Total Solids	924
Ignition Loss	38
Hardness	35
Sulphates	216
Chlorides	7
Alkalinity	480
Nature of Alkalinity - Bicarbonate of Soda, Lime and Magnesium	
Nitrites	1.6
Nitrates	trace
Iron	.2
Flourine	nil

Remarks: This water is chemically suitable but the soda content (33.04 grains per gallon) will corrode aluminum and harm plants.

## 17. GAS

Natural gas is supplied to the town under a franchise by Northwestern Utilities Ltd.

### Rate No. 1 - General

Available to all customers.



First 20 Therms or less used per month - \$3.00.

All additional Therms used per month - 4.5c per Therm.

Minimum monthly charge- \$3.00

When accounts are not paid on or before the due date the charge per Therm, other than the first 20 Therms shall be increased by 3c and the gross rate so arrived at shall apply.

**Rate No. 2 - Optional**

Available on annual contract to all customers whose annual consumption is more than 11,900 Therms.

Fixed charge - \$20.00 per month.

Plus commodity charge - 2.7c per Therm.

Minimum monthly charge - \$20.00.

When accounts are not paid on or before the due date, the charge per Therm shall be increased by 2c and the gross rate so arrived at shall apply.

**Rate No. 3 - Optional High Load Factor**

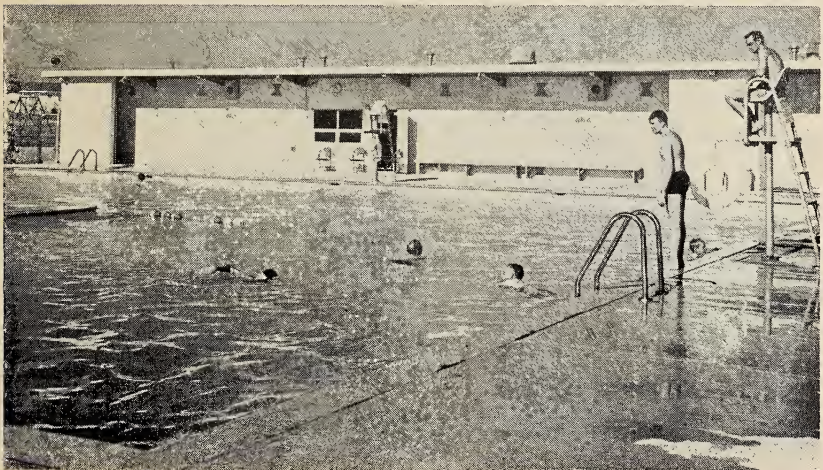
Available on annual contract to all customers whose annual consumption is more than 100,000 Therms and whose total consumption during the six meter reading periods ending in May, June, July, August, September and October is not less than 40 percent of their total consumption during the year.

Fixed Charge - \$20.00 per month plus 22c per month per Therm of maximum twelve hour demand.

Commodity charge for all consumption - 1.7c per Therm.

Minimum monthly charge - fixed charge.

The maximum twelve hour demand shall be the greatest amount of gas in Therms delivered in any twelve consecutive hours during



Drayton Valley is justifiably proud of its new swimming pool.

the current billing period or the preceeding 11 billing periods as determined by the company by measurement. The maximum twelve hour demand of a new consumer of gas shall be estimated by the company, providing that the company with the approval of the Board of Public Utility Commissioners take into consideration in determining the fixed charge, the effect of the customer's demand for gas upon the company's peak load.

### **General Conditions Affecting Rates No. 2 and 3**

These rates are available only on annual contract, which shall continue from year to year thereafter, until either party shall give to the other party, at least 30 days prior to the expiration of any such year a written notice of desire to terminate same whereupon at the expiration of such year, it shall cease and determine.

#### **18. GAS**

Heat value - 2,521 b.t.u. per cu. ft. at 60 degrees F.  
100 lb. cylinders - \$6.50.  
Bulk - 18.5c per gallon.  
Storage capacity - 6,000 gallons.

#### **19. DIESEL FUEL**

Heat value - 135,000 to 140,000 b.t.u. per gallon at 60 degrees F.  
Winter grade - 19.2c per gallon.  
Summer grade - 19.2c per gallon.  
Storage capacity - 5,000 gallons.

#### **20. COAL**

None used.

#### **21. RESOURCES**

Wheat and coarse grain, horses, cattle, sheep, hogs, dairy products, poultry products, lumber, sand and gravel, gas and oil.

#### **22. GOVERNMENT OFFICES AND SERVICES**

##### **Federal**

Post Office, Royal Canadian Mounted Police detachment.

##### **Provincial**

Alberta Government Telephones, Oil and Gas Conservation Board, Department of Highways, Liquor Vendor, Edson Health Unit, Alberta Treasury Branch.

##### **Municipal**

Town Hall housing - Council Chamber, Town Managar, Secretary-Treasurer and staff, Town Engineer, Waterworks Foreman, Public Works Foreman, Police Department, Fire Department, Recreation Director, Civil Defense Director.

#### **23. HEALTH SERVICES**

The Drayton Valley Municipal Hospital has 35 beds and 8 bassinets. The staff consists of a matron, 12 graduate nurses, one technician, 7 nurses aides, secretary-treasurer and stenographer.

Public ward rates - Residents - \$1.60  
Non-residents - \$16.00

The Edson Health Unit maintains an office in the town and calls monthly to examine pre-school and school children.

Other Facilities - 3 resident doctors, 2 non-resident doctors, 1 dentist, 1 chiropractor, 1 optometrist (calling), 2 drug stores.

**24. PROFESSIONAL AND SKILLED PERSONAL SERVICES**

(Excluding Health Services)

Type of Service	No. of Establishments
Accountants	2
Barbers	2
Barrister	1 calling
Beauty Parlors	3
Watch Repairs	2

**25. TRANSPORTATION**

Motor transport to and from Edmonton daily.  
 Daily truck service to Edmonton.  
 Taxi stand - one cab.  
 Air strip for light planes.

**26. NEWSPAPERS**

Drayton Valley Pembina News Advertiser - weekly.

**27. COMMUNICATIONS**

Alberta Government Telephones, 250 channel microwave and mobile telephone service, Post Office.

Nearest Radio Stations - Edmonton (CFRN, CICA, CHED, CHFA, CBX, CKUA).

Nearest Television Stations - Edmonton (CFRN-TV, CBXT-TV).

**28. FINANCIAL FACILITIES**

Royal Bank of Canada, Alberta Treasury Branch.

**29. HOTELS**

	No. of Rooms	Rate	Licensed
Drayton Valley Hotel Co. Ltd.	47	4.50 up	yes

**30. TOURIST CAMPS**

	No. of Units	Grade	Rate
Ambassador Motel	6	4 star	\$6.50 up
	3	2 star	
Diamond Motel	4	4 star	\$4.00 up
	3	2 star	
	6	unclassified	
Drayton Valley Cabins	2	2 star	\$4.50
Hillcrest Court	3	unclassified	

Trailer Parks and Campsites - Pembina Parkway Trailer Court, E. B. Trailer Court, Drayton Valley Cabins, Dodson's Trailer Court, Hillcrest Court, Western Trailer Court, Alberta Government Park Campsite - 1½ miles northwest of town, Alberta Government Park Campsite - 10 miles northwest of town.

**31. CHURCHES**

Anglican, United, Roman Catholic, Lutheran, Church of God, Baptist, Pentecostal, Jehovah Witness.

### 32. LODGES AND SERVICE CLUBS

Masonic, Elks, Royal Purple, Lions, Rotary, Chamber of Commerce, Canadian Legion, Women's Auxiliry Canadian Legion, Women's Institute.

### 33. SOCIETIES AND ASSOCIATIONS

Association of Registered Nurses, Association of Oil Wives, Home and School Association, Toast Mistress Club.

### 34. EDUCATION

The town schools are a unit of the Stony Plain School Division No. 23. Grades 1 to 12 are taught along with the following optional subjects - typing, drama, music, art, home economics and shop. The school population is made up as follows:

	Grades	No. of Teachers	No. of Pupils
Elementary	1 - 6	27	764
Junior High	7 - 9	9	260
High	10 - 12	4	123

### 35. THEATRES AND HALLS

	Capacity	Stage	Piano
Cardium Theatre	500	yes	no
Legion Hall	200	no	yes
B.P.O. Community Hall	500	yes	yes
Boy Scouts Hall	200	yes	yes

### 36. CULTURAL ACTIVITIES

The Drayton Valley Library is sponsored by the Women's Institute, with grants from the town, Provincial Government Library grant and membership fees. The Library is open on Tuesday from 12 to 1 p.m., 4 to 6 p.m., 7 to 10 p.m. and Friday from 4 to 6 p.m. There are approximately 1,200 volumes in the Library.

#### Other Activities

Town band - 20 piece, local orchestra, drama and art at school.

### 37. YOUTH ACTIVITIES

Boys - Scouts, Cubs.

Girls - Explorers, Brownies, Guides.

### 38. SPORTS

Baseball (senior, junior, pony and pee wee), hockey (intermediate, junior, midget, bantam, pee wee), football (high school, bantam, pee wee), softball (women's and girls), basketball, badminton, curling, golf, skiing.

Facilities - Open air hockey and skating rink with dressing rooms, covered curling rink (five sheets artificial ice), nine hole golf course, baseball diamonds, playgrounds, school grounds, wading pool, ski slope and jump.

### 39. FAIRS

Rodeo - 3 day event.

### 40. HISTORIC SITES

Nil.

### 41. CO.OPERATIVES

Nil.

## 42. INDUSTRY AND BUSINESS

Type of Industry or Business	No. of Establishments	Producer or Manufacturer	Wholesale	Retail
Absorption Plant	1	1	1	
Accountant	2			
Auto Body Repairs	2			2
Bakery	1	1	1	1
Banks	2			
Barbers	2			
Beauty Parlors	3			
Bowling Alley	1			
Building Contractor	5			
Blacksmith	1	1		1
Bus Depot	1			
Cartage Delivery	1			
Chiropractor	1			
Clothing (men's)	1			1
Clothing (women's and children's)	2			2
Creamery	1	1	1	1
Dairy Bar	1	1		1
Dentist	1			
Doctors	3	resident, 2 calling		
Drug Stores	2			2
Electrical Appliances	4			4
Electrical Contractors	4			
Florist	1			1
Garages and Service Stations	8			8
General Stores	2			2
Glass Store	1			1
Grocery Stores	4			4
Hardware Stores	2			2
Hotel	1			1
Insurance and Real Estate	2			
Jewellery Stores	2			2
Laundry and Dry Cleaners	1	1		1
Lawyer	1	calling		
Lumber Yards	3		3	3
Liquor Vendor	1			1
Milk Distributor	1		1	1
Motels	4			
Oil Distributor	1		1	
Oil Field Equipment and Supplies	11		11	
Oil Field Services	29			

Continued:

Type of Industry or Business	No. of Establishments	Producer or Manufacturer	Wholesale	Retail
Oil Companies	13		13	
Oil Drilling Companies	3	3	3	
Optometrist	1 calling			
Painters & Decorators	4			
Pipe Line Companies	3	3		
Pool Room	1			
Printers	1	1	1	1
Propane Distributors	2		2	2
Radio & T.V. Repairs	2			
Restaurants	4			
Shoe Repairs	1	1		1
Shoe Store	1			1
Sporting Goods	1			1
Theatres	1			
Trailer Parks	6			
Trucking Transport	3			
Variety Store	1			1
Welding and Machine Shops	4	4	4	

#### 43. SITES

Industrial and residential sites can be purchased from private owners at reasonable prices.

#### 44. INDUSTRIAL DEVELOPMENT

The farms in the area are small, many of them one and two quarters in size. The average amount of improved land per farm is 86 acres. Principal crops were: wheat - 5 acres, oats - 16 acres, barley - 14 acres and tame hay - 19 acres per farm. On the average farm there are 10 head of cattle, two sheep, three hogs, and 56 hens and chickens. Farm income at Drayton Valley comes from sources such as livestock and products, grain, forests, furs, etc.

In 1953 the first oil well was discovered in the Pembina field. Some people claim that there is more oil in the Pembina field than there is in the State of Texas. There are 2,979 wells capable of producing oil at the present time. The Golead Oil and Gas Company maintains a gas collection system that is piped to a gas processing plant. This plant processes 2½ million cubic feet per day. The Texaco Canada Ltd. gas processing plant is located at Cynthia, on the west side of the Pembina field. The gas from both companies is piped to Edmonton and also to the Alberta Gas Tank Line system.

#### 45. TRADING AREA

North - 27 miles.

West - 32 miles.

South - 33 miles.

East - 22 miles.

#### 46. POPULATION

Trading area population, 1961 Dominion Census - 16,700.

Town Population, 1961 Dominion Census - 3,854.



N.L.C. - B.N.C.



3 3286 10806361 7

