

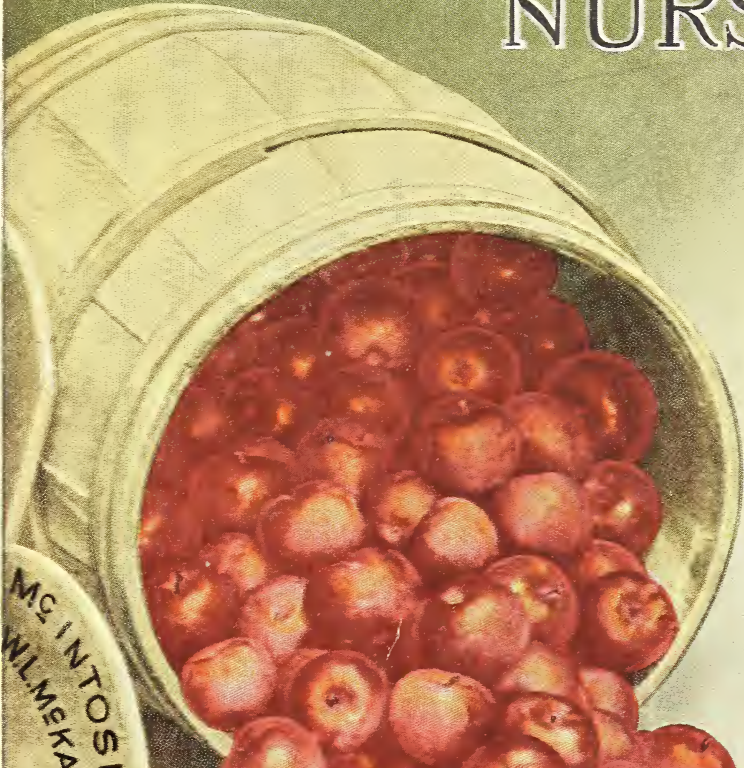
Historic, archived document

Do not assume content reflects current scientific knowledge, policies, or practices.

62, 61

STEEL
MAR 25 1924

THE VAN DUSEN NURSERIES



MCINTOSH
WLMCKAY



1924



C. C. McKAY MGR
GENEVA, N. Y.

IN REPLY TO MANY INQUIRIES:

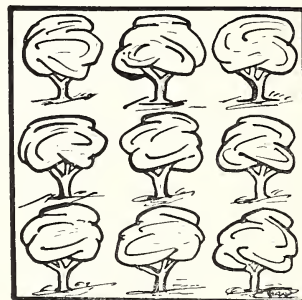
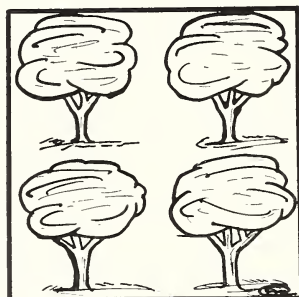
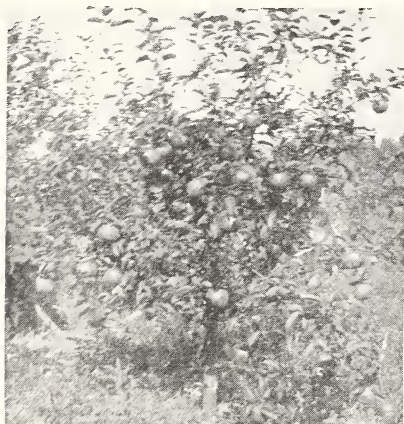
Most of us nurserymen are inclined to fill our selling catalogs with too much unnecessary talk. Knowing however that you are interested in Dwarf Fruit Trees, we hope you will read this following paragraph as it really is not included merely to help fill up the page.

Dwarf Fruit Trees—what do these words mean to you, and what picture do they call up to your mind's eye? We wish to make certain that you do not mistake these trees to be pignies, so small that the amount of fruit they produce would be unimportant in quantity. They are more like half-grown, or sometimes at the most two-thirds grown, standard size trees; and the amount of fruit they can give is **just in proportion**. In some small yards dwarf trees can be used where standards would not do at all. Or, where one standard tree could be used, the use of dwarfs instead allows you to use two or three, or sometimes even four trees in the space the standard tree would require. To look at it in another way, a full grown standard tree will often give more fruit at one time than can be used up; while the two or three dwarfs can be so chosen that they will not ripen all at once, but at convenient intervals of time. You will realize at once that this is an important consideration when planting fruit trees for home use. The next big advantage in using dwarf fruit trees is that they begin fruiting much sooner than the standard fruit tree. Standard trees, according to the kind of fruit and the variety, require generally from four to twelve years to commence bearing. Under the same conditions, the dwarfs commence fruiting in from two to five years. The exceptions to this general rule are few. For instance, a standard Northern Spy apple tree will take from fifteen to twenty years to begin fruiting, and the dwarf is likely to take ten years. To sum up, **the dwarf trees begin to fruit in about half the time required for standard trees.**

In addition, we wish to say here that our dwarf fruit trees are not merely low headed standards, cut-back or any such makeshift. They are propagated on true dwarfing roots, and never become the size of standard trees.

Which Apple Trees Suit Your Garden Best?

Standards or Dwarfs?



FOUR VARIETIES OR NINE VARIETIES?

Standard	Dwarfs	Price Each 2-yr. Old	Below we indicate the color, size, quality, date when fruit becomes edible in Western New York and the number of weeks these varieties will keep in cool dry cellar storage at Geneva after first becoming ready to eat. Pick late Fall and Winter apples while hard and allow to mellow up in storage.					Remarks
			APPLES	Color	Size	Q'ty	Matures	
70c	\$1.25	Baldwin	Bright Red	Large	Very Good	Dec. 1-15	14	A universal favorite because of its splendid dessert and cooking qualities.
—	1.25	Benoni	Red Striped	Medium	Very Good	Aug. 10-20	3	A fine dessert apple. Ripens continuously from early August into September.
—	1.25	Chenango Strawberry	Light Red	Medium	Very Good	Sep. 1-10	3	Ripens unevenly so may be picked during several weeks. The flesh is white and tender.
—	1.25	Cox Orange	Orange Red	Medium	Best	Sep. 20-30	8	One of the best in quality of the English dessert apples. Desirable for home use.
70c	1.25	Delicious	Dark Red	Large	Best	Nov. 15-25	10	One of our most beautiful winter apples; excellent in flavor and attractiveness.
70c	1.25	Duchess	Red Striped	Medium	Good	Aug. 1-10	2	One of the first summer cooking apples. A very hardy Russian variety.
—	1.25	Early Strawberry	Bright Red	Medium	Very Good	Aug. 1-10	3	Desirable for both dessert and culinary use. Noted for productiveness and high quality.
70c	1.25	Fameuse	Bright Red	Small	Best	Oct. 5-15	8	One of the very best dessert apples of its season. Known also by the name Snow Apple.

Price each 2-yr. old		Below we indicate the color, size, quality, date when fruit becomes edible in Western New York and the number of weeks these varieties will keep in a cool dry cellar storage at Geneva after first becoming ready to eat. Pick late Fall and Winter apples while hard and allow to mellow up in storage.						
Standard	Dwarf	APPLES	Color	Size	Q'ty	Matures	Wks	Remarks
—	\$2.00	Golden Russet	Golden Russet	Medium	Best	Jan. 1-10	15	A particularly good late winter apple for both dessert and cooking use.
—	1.25	Golden Sweet	Clear Yellow	Medium	Very Good	Aug. 10-20	2	Sometimes called Orange Sweet. Rich and sweet, fine in flavor and quality.
70c	1.25	Gravenstein	Red	Large	Very Good	Aug. 20-30	6	For cooking purposes it is perhaps unexcelled by any apple of its season.
—	1.25	Hendrick Sweet	Red	Medium	Very Good	Nov. 5-15	6	Equally excellent as an eating apple or for baking. Juicy and distinctly sweet.
70c	1.25	Jonathan	Bright Red	Medium	Best	Nov. 15-25	14	Highly flavored and excellent for eating or cooking. Jonathan is of the Spitzenburg class.
70c	1.25	King	Bright Red	Large	Very Good	Nov. 15-25	6	King has exceedingly high quality and is adapted to both eating and use.
—	1.25	King David	Dark Red	Medium	Very Good	Nov. 5-15	12	Very richly colored, nearly as good as Jonathan, and early and prolific bearer.
—	1.25	Lady	Red	Small	Best	Dec. 5-15	13	A strikingly beautiful little apple, highly desirable for decorative use and for dessert.
—	1.25	Lady Sweet	Striped Red	Large	Very Good	Nov. 15-25	7	An exceedingly fine sweet apple for home use, with a distinct and pleasant aroma.
—	1.25	Liveland Raspberry	Light Crimson	Medium	Good	July 20-30	1	Flesh white, often stained with red, fine, very tender; mildly subacid, almost sweet.
70c	1.25	Northern Spy	Bright Red	Large	Best	Oct. 5-15	14	Spy ranks with the very best winter apples of New York. Most excellent for all uses.
—	1.25	Opalescent	Deep Red	Large	Very Good	Oct. 15-25	9	Attractive in appearance, size, shape and color. Takes a brilliant glossy polish.

One Year Old Dwarf Apple Trees

Our supply this season permits us to offer one year old dwarf apple trees to those who desire them. This is for the spring of 1924 only. We can furnish the following varieties, most of which are described in this catalog. These are whips, and mostly run from 25 inches to 30 inches in height.

Price 90c each. \$9.00 per doz.

- | | |
|-------------------|--------------------|
| Baldwin | Hendrick Sweet |
| Autumn Strawberry | Jonathan |
| Cortland | King |
| Cox Orange | Lady |
| Delicious | Liveland |
| Dachess | Maiden Blush |
| Early Strawberry | MCINTOSH |
| Early Harvest | Northern Spy |
| Fall Pippin | Red Astrachan |
| Fameuse | Scarlet Beauty |
| Gravenstein | Stayman Winesap |
| Grimes Golden | Spitzenburg |
| Golden Russet | Wealthy |
| Golden Sweet | Yellow Transparent |

CRAB APPLES

- | | |
|----------|--------------|
| Dolgo | Martha |
| Florence | Transcendent |

We head these trees at 15 or 18 inches from the ground to branch them, and you should cut these trees off at about the same height when you plant them. We consider them a very good buy as priced.



DWARF SCARLET BEAUTY—Third Season

Price Each 2-Yr. old		When sold out of a variety ordered, our policy is to substitute another labeled true to name, of similar color, quality and season, unless you instruct us otherwise. Remember to write "Do not substitute" on your order if such is your wish and we will refund the money instead of substituting.						
Standard	Dwarf	APPLES	Color	Size	Q'ty	Matures	Wks	Remarks
70c	\$1.25	Red Astrachan	Striped Red	Medium	Very Good	Aug. 10-30	3	Fit for culinary use before fully ripe, so may be used from late July to September.
—	1.25	Red Bietigheimer	Light Red	Very Large	Fair	Sep. 10-20		Remarkable for its great size and beauty. Good for cooking, but poor for eating fresh.
—	1.25	Red June	Deep Red	Small	Very Good	Aug. 1-20		A handsome little apple which ripens unevenly during two or three weeks.
70c	1.25	R. I. Greening	Yellow Green	Large	Very Good	Nov. 20-30	12	Almost unsurpassed for cooking use, with few equals as a dessert fruit in its season.
70c	1.25	Rome Beauty	Mottled Red	Large	Very Good	Dec. 1-10	12	Handsome, and one of the best keepers; mild and agreeable in flavor.
—	1.25	Scarlet Beauty	Deep Red	Very Large	Good	Oct. 1-15	4	Much better in quality than most very large apples. It is good looking and good tasting.
70c	1.25	Stayman Winesap	Red Striped	Medium	Very Good	Dec. 15-25	13	Probably the best variety of the Winesap class for general cultivation.
—	1.25	Stearns	Carmine Striped	Large	Very Good	Oct. 5-15	4	Beautifully striped. Mildly acid, tender, juicy and chuck full of delicious flavor.
—	1.25	Sweet Bough	Pale Yellow	Large	Very Good	Aug. 5-25	3	One of the finest summer apples and a worthy favorite in the home orchard.
—	1.25	Wagener	Bright Red	Medium	Best	Nov. 15-25	8	At its best, Wagener is of superior excellence highly esteemed for dessert use.
70c	1.25	Wealthy	Bright Red	Medium	Very Good	Sep. 10-20	5	One of the hardiest varieties. A fine sort both for eating fresh and for cooking.
—	1.25	Winter Banana	Yellow Blushed	Large	Very Good	Nov. 15-25	9	Fine dessert quality, though poor for cooking. Resembles the Maiden Blush in appearance.
—	1.25	Wolf River	Red Striped	Very Large	Good	Sep. 5-15	5	Tree very hardy; fruit highly colored and extremely large; fair to good in quality.
—	1.25	Yellow Newtown	Yellow Blushed	Medium	Very Good	Jan. 20-30	9	Also known as Albemarle; highest quality for dessert and excellent for cooking.
70c	1.25	Yellow Transparent	Yellow	Medium	Very Good	July 10-30	2	One of the best extra early apples; acceptable for dessert and excellent for cooking.



DWARF TREES FRUIT YOUNG

Our Dwarf Apple Trees

Our main list of dwarf apple is budded on doucin roots to produce the dwarf style of tree. Even under conditions of neglect these trees will rarely grow more than fifteen feet high. By a small amount of wise annual pruning they may easily be grown to ten or twelve feet high when mature. We have a small list of apple varieties budded on paradise roots. These trees will rarely grow more than ten or twelve feet high. By judicious pruning however, they can be grown to six or eight feet high when mature.

The trees on doucin roots may be planted from ten or twelve feet to twenty feet apart, depending on the height it is intended to grow them. When on paradise roots they may be planted eight or ten feet apart. We get some reports from customers of trees which fruit the first or second year after planting. Most any of them may be expected to begin bearing at least the third or fourth year. The difference is that some varieties naturally bear younger than others.

Dwarf Apples on Paradise Roots

The Dwarfest of Dwarf Apples

These little trees are the finest of all to combine ornamental use with the advantage of the crops they produce. They usually fruit even more quickly than the dwarf apples on Doucin roots; and when in bloom they make a wonderfully beautiful little tree worthy of a conspicuous place in the yard they adorn. In the garden they may be planted eight feet apart. **Do not make the mistake** of thinking they produce fruit in negligible quantity. After the first few crops they will give as many apples of one variety as the average family will want.

Two Years Old, \$1.75 each



A THIFTY DWARF

- | | |
|------------------|--------------------|
| Baldwin | King |
| Benoni | King David |
| Chenango | Liveland |
| Cox Orange | Mother |
| DELICIOUS | Paragon |
| Duchess | Red June |
| Early Harvest | Stayman |
| Early Melon | Stearns |
| Fameuse | Sweet Bough |
| Gravenstein | Winter Banana |
| Hendrick Sweet | Red Astrachan |
| Jonathan | Yellow Transparent |

CRAB APPLES

- | | | |
|----------|--------|--------|
| Florence | Hyslop | Martha |
|----------|--------|--------|



DWARF SWEET BOUGH

Standard Apple Trees — Two Year Old Trees

70c each, \$6.00 per dozen, \$40.00 per 100.

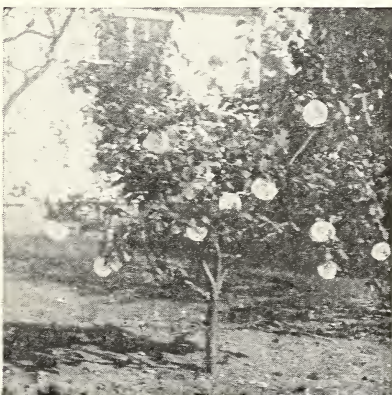
- Baldwin
- Delicious
- Early Harvest
- Fall Pippin
- Fameuse
- Gravenstein
- Jonathan
- King
- McIntosh
- Northern Spy

Orders for standard apples will be filled in the order in which they are received, as long as our stock lasts. If we are unable to supply stock, our liability will be limited to the refund of price paid.

We periodically renew our buds of all the fruits from bearing trees, to eliminate as much as possible the chance of mixture of varieties. We exercise the greatest care to have every tree true to name and in healthy condition, and it is understood between the purchaser and ourselves that we are not liable for more than the purchase price of trees that prove untrue.

- Red Astrachan
- R. I. Greening
- Rome Beauty
- Scarlet Beauty
- Spitzenburg
- Stearns
- Wealthy
- Winter Banana
- Yellow Belleflower
- Yellow Transparent

QUINCE BUSHES—Two Years Old—\$1.25 each



YOUNG TREE OF CHAMPION

- Bentley—Medium size, particularly attractive, a good producer.
- Champion—A very vigorous grower, and bears young. Fruit very large, lively yellow color, cooks very tender.
- Pineapple—Flavor suggestive of the pineapple. Makes a superior jelly.
- Smyrna—Clear yellow color; a fine quince with a flavor of its own.
- Sweet Winter—Medium size, pear-shaped, quite late, rather sweet.



Champion

Orange

Smyrna

Price Each 2-Yr. old		Below we indicate size, quality, date when fruit becomes ripe to eat in Western New York, and number of weeks these varieties will keep in cool dry cellar storage at Geneva after ripening. These are not picking dates. Most pears should be picked while hard and ripened in the cellar.					
Standard	Dwarf	PEARS	Size	Quality	Matures	Wks	Remarks
90c	1.00	Anjou	Large	Very Good	Oct. 10-20	8	Has no superior as an early winter pear and few equals in quality. One of the best keepers.
90c	1.00	BARTLETT	Large	Good	Sep. 5-15	2	Bartlett is more popular and widely used than any other pear in America.
—	1.00	Bar-Seckel	Medium	Very Good	Aug. 20-30	3	An interesting cross between Bartlett and seckel. The flesh is juicy and well flavored.
1.25	—	BOSC	Large	Best	Oct. 20-30	2	Merits unqualified praise; uniquely beautiful in shape and color, unlike any other pear.
90c	1.00	CLAPP	Very Large	Very Good	Aug. 20-30	2	As good as Bartlett which it somewhat resembles, though it is richer in flavor.
90c	—	Clairgeau	Very Large	Good	Oct. 20-30	1	Remarkably vigorous and productive; exceedingly beautiful fruit, fair to good in quality.
—	1.00	Comet	Medium	Fair	Aug. 15-20	1	Brilliantly and beautifully colored; in quality valuable only for its early season.
1.25	1.25	COMICE	Large	Best	Oct. 20-30	3	Long and justly esteemed for its beauty and high quality; tender, juicy, sweet and perfumed.
90c	—	Dana Hovey	Small	Best	Nov. 10-20	6	A delicious little pear, so juicy, sweet and rich that it is a veritable sweetmeat.
90c	1.00	Doctor Reeder	Rather Small	Good	Oct. 15-20	3	In quality the fruit ranks but little below Seckel, which it follows in season.
—	1.00	DUCHESS	Very Large	Good	Oct. 15-25	3	When well grown, Duchess excites admiration and wonder by its enormous size.
—	1.00	Early Harvest	Large	Poor	Aug. 15-25	1	Large and handsome for early pears, and the trees are regular and heavy bearers.
—	1.00	Flemish Beauty	Large	Best	Oct. 1-10	3	Blights and scabs badly; recommended only to fruit lovers who will combat these troubles.
90c	—	Howell	Large	Very Good	Oct. 1-10	2	Great freedom from disease makes Howell an estimable variety for the home orchard.
—	1.00	Idaho	Medium	Good	Sep. 25-30	2	Valuable in Pacific North West, and also where hardiness is a prime requisite.
—	1.00	Kieffer	Medium	Fair	Oct. 20-30	3	Kieffer makes an inviting canned pear; eaten fresh it is generally coarse and poor.
—	1.00	Lawrence	Medium	Very Good	Nov. 1-10	4	One of the very best early winter pears, and the best flavored one of its season.
—	1.00	Louise Bonne	Large	Very Good	Oct. 1-10	3	A handsome and richly flavored fruit which is improved by the dwarfing process.
—	1.00	Osband Summer	Rather Small	Very Good	Aug. 10-15	1	Unusually good for its early season. Juicy and sweet with a rich sugary flavor.
90c	1.00	SECKEL	Small	Best	Oct. 1-10	3	This fruit is juicy, perfumed and most exquisitely and delicately flavored.
90c	—	Sheldon	Medium	Best	Oct. 1-10	4	Has a combination of flavor and quality which makes it a luscious fruit.
90c	—	Souvenir	Very Large	Good	Sep. 1-5	2	Very similar to Bartlett and Clapp; the fruits are larger and often handsomer.
—	1.00	Wilder	Medium	Good	Aug. 20-25	1	This is one of the good early pears and is edible almost to the very center.
—	1.00	Worden Seckel	Medium	Very Good	Sep. 25-30	3	A splendid pear, not quite so fine as Seckel, but larger and handsomer.

One Year Old Dwarf Pears

Our pears are budded on quince roots to dwarf them. Aside from the two year old trees listed above, we offer, for **spring 1924 only**, one year old dwarf pear trees of the varieties listed here. When you plant these, be sure to cut them off at about 18 inches from the ground, to form the branches of the head of the tree at that point.

Price 75c each

Anjou	Flemish
Bartlett	Idaho
Comice	Louise Bonne
Clapp	Seckel
Comet	Vermont Beauty
Duchess	Worden Seckel

You want the results which Dwarf Trees give. These little trees are more sure and quicker bearers than any others.

\$1

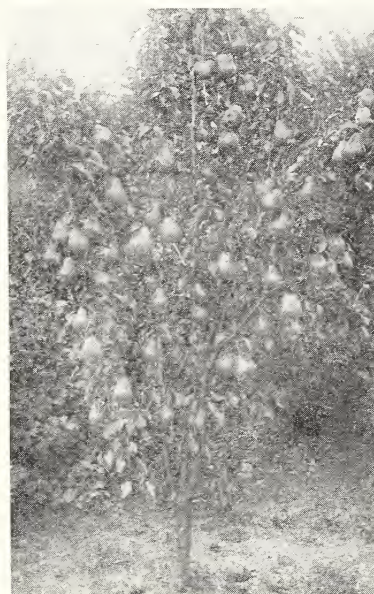
The Cost



The Start



Planted 3 yrs.



Same Tree Planted 7 years

DWARF PEACH TREES

Had it not chanced that to most of mankind the peach is free for the growing of it, we would prize it as a luxury more highly than we do. Of all our northern fruits it is the most tropical in its lusciousness.

In dwarfing our peaches we use roots which after considerable experience seem best for the purpose. These trees grow so rapidly for a year or two they might be mistaken for standards instead of dwarfs, but after the second or third year the dwarf characteristics become unmistakably evident.

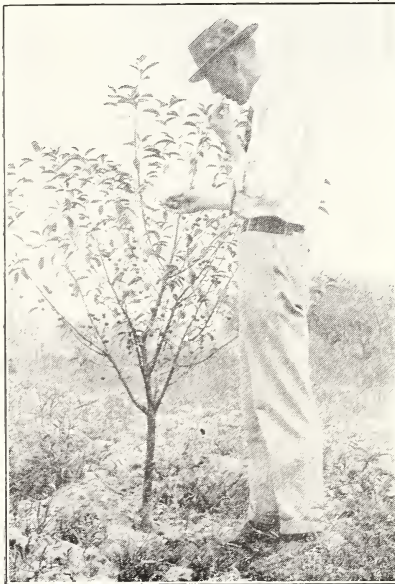
Plant these about twelve feet apart. Don't forget to give them a good stiff pruning each spring. All peaches tend to grow rather tall and spindling if allowed to grow unpruned. A row of these little trees at the side of the garden may be selected to ripen in succession, and will give fruit over a long period of time.

Price Each		Below are given the characteristic color, size and quality of the varieties we offer. The ripening dates given are those to be expected at Geneva, or other localities with similar seasons, in a normal year. This list includes the choicest varieties.					
Standard	Dwarf	PEACHES	Flesh	Size	Quality	Ripens	Remarks
40c	\$2.00	Champion	White	Medium	Best	Aug. 25	Probably the best white-flashed peach. But it excels only in the best peach soils.
40c	2.00	Crawford Late	Yellow	Very Large	Best	Sep. 15	Has all the good qualities of Crawford Early, and thrives in a wider range of soil and climate
—	2.00	Crosby	Yellow	Medium	Very Good	Sep. 20	Requires the best peach soil. The rich flesh is delicious to the taste either fresh or cooked.
45c	2.00	ELBERTA	Yellow	Very Large	Good	Sep. 15	Thrives in a wide range of soil and climate; large, handsome and very productive.
40c	2.00	Fitzgerald	Yellow	Large	Best	Aug. 28	Almost identical with Early Crawford except for its season and that it is more productive.
—	2.00	JAPAN DREAM	Deep Red	Medium	Very Good	Aug. 5	No other peach I know fruits so young or heavily. It seems adapted to all peach sections.
45c	2.00	New Hale (JHH)	Yellow	Large	Good	Sep. 10	Budded from trees secured from the originator.
—	2.00	Pallas	White	Medium	Very Good	Sep. 10	Rich, aromatic and extremely sweet; superbly delicious to those who like sweets.
45c	2.00	ROCHESTER	Yellow	Large	Very Good	Aug. 20	A strikingly beautiful member of the Crawford group. The flesh is firm, rich, juicy and sweet.

Price Each		Below we indicate the color, size, flavor and quality of the varieties offered. In a normal year the entire cherry season for this list of varieties lasts from about June 25th to about July 20th at Geneva.						
Standard	Dwarf	CHERRIES	Color	Size	Flavor	Q'ty	Season	Remarks
—	\$1.50	Abbesse	Dark Red	Large	Mildly Acid	Very Good	Late	Grown only by us. Hardy enough for many localities where sweet cherries fail.
—	2.00	Bay State	Bright Red	Large	Mildly Acid	Very Good	Mid-Season	Round, bright, glossy fruit of most excellent quality.
1.25	1.50	BLACK TARTARIAN	Purplish Black	Medium	Sweet	Best	Early	A well known favorite for home planting.
—	1.50	Burbank	Deep Crimson	Very Large	Sweet	Good	Very Early	One of Mr. Luther Burbank's productions which is reported to be a sure cropper.
—	1.50	Governor Wood	White Blushed	Medium	Sweet	Very Good	Early	Fruits young; beautiful and delicious; excellent qualities for home use.
—	1.50	Lambert	Deep Red	Large	Sweet	Very Good	Mid-Season	A fine combination of size, superb flavor and beauty.
1.00	1.25	MONT-MORENCY	Red	Medium	Tart	Very Good	Mid-Season	Most widely used sour cherry; probably the finest for culinary uses.
1.25	1.50	NAPOLEON	Yellow Blushed	Very Large	Sweet	Very Good	Rather Early	Firm flesh, handsome, productive; the leading white sweet cherry.
—	2.00	Princess Christine	Bright Red	Medium	Tart	Very Good	Late	Fifteen days later than Montmorency, which it resembles.
—	1.50	Schmidt	Purplish Red	Large	Sweet	Good	Mid-Season	Larger than most dark sweets. The flesh is crisp and juicy, richly flavored.
1.25	1.50	WINDSOR	Deep Red	Medium	Sweet	Very Good	Rather Late	Almost black when ripe. Much like Schmidt, but a little firmer.
1.25	1.50	Yellow Spanish	Yellow Blushed	Very Large	Sweet	Best	Mid-Season	Very rich and sweet, much like Napoleon except more tender in flesh.

DWARF CHERRY TREES

Cherries, like the other fruits, are dwarfed by propagating on slower growing roots than we use for the standard trees. We plant the sweet varieties twelve to fifteen feet apart each way, fifteen feet being recommended in most cases. The sour cherries



DWARF CHERRY FRUITING

may be planted about twelve feet apart. Both the dwarf sweet and sour cherries should be given a good dormant pruning early each spring. Cherries do well in almost any soil, except that it **must not be wet**. Select a location with good natural drainage. In Northern New York and the coldest parts of New England the sweet cherry does not stand the severe winter cold, but there are few places where the sour cherry does not thrive. Under average conditions sweet varieties require four or five years to commence fruiting, while the sour varieties will begin to bear more quickly, often in a year or two from time of planting.



DWARF MONTMORENCY

Gentlemen:

I enclose an order I want in the fall. The dwarf Montmorency cherry I got in the spring bloomed and set some fruit, so I am more than pleased.

Very truly yours,
J. P.

Long Island City, N. Y.
July 27, 1923

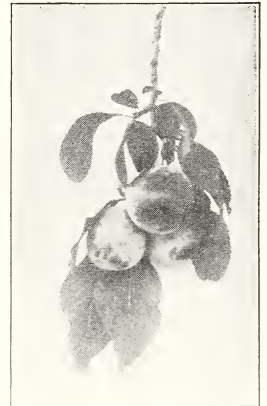
Price Each		The season of European plums at Geneva lasts from about July 15th to about October 5th. The season of those plums listed here will therefore, as indicated below, last from the middle of August to early October. We have as standards only those as offered by the indication of price.				
Standard	Dwarf	PLUMS	Color	Quality	Season	Remarks
—	\$1.75	Agen	Violet Purple	Best	Late	Unusually productive. One of our best plums, whether used fresh for dessert or for prune making.
1.00	1.75	Bradshaw	Reddish Purple	Good	Mid-Season	Attractive, very productive, very large; mildly flavored, exceedingly juicy and sweet.
1.00	1.75	Fellemburg	Purplish Black	Best	Late	Also called Italian Prune. Finely flavored either fresh or cooked, slightly tart, large in size.
1.00	1.75	German Prune	Purplish Black	Very Good	Late	Long ripening period; fruit small; rather tart for dessert use; one of the best for cooking purposes.
—	2.00	Imperial Epineuse	Purplish Red	Very Good	Rather Late	Almost unsurpassed in quality by any other plum of its color. One of the largest of the prune group.
—	1.75	Kaga	Purplish Black	Fair	Rather Early	A Hansen plum, not the equal of our others, but very valuable because nardy in severe climates.
—	2.00	King Damson	Black	Good	Late	One of the larger Damsons. When fully ripened it becomes a very good dessert plum.
—	1.75	Miller's Superb	Mottled Yellow	Very Good	Mid-Season	For dessert use we consider this one of the finest of an orchard of two hundred varieties.
—	2.00	Pearl	Golden Yellow	Best	Mid-Season	Somewhat unproductive; but almost unsurpassed in quality with its sweet luscious flavor.
75c	1.75	Reine Claude	Green	Very Good	Late	Noted for richness of flavor, fine texture of flesh, abundance of juice and pleasant aroma.
90c	—	Shropshire Damson	Purplish Black	Good	Late	Not a dessert variety, but a long time favorite for making fine jam and jelly.
1.00	1.75	Yellow Egg	Golden Yellow	Good	Late	Probably the largest and handsomest yellow plum. Rather juicy, firm, of average sweetness, mild in flavor.

Dwarf Plum Trees



DWARF TREE OF MILLER SUPERB

We wish you could walk with us through a certain plum orchard near our nursery, where there are close to one hundred varieties of plums growing. One can not see this orchard in the fruiting season without becoming a plum enthusiast. In The Plums of New York, Professor Hedrick says: "Of all the stone fruits, plums furnish the greatest diversity of kinds. Varieties to the number of two thousand, from fifteen species, are now or have been under cultivation. These varieties give a greater range of flavor, aroma, texture, color, form and size, the qualities which gratify the senses and make fruits desirable, than any other of our orchard fruits."



REINE CLAUDE

Standard Apricot Trees

As we can not supply dwarf apricot trees this spring, we are glad to offer standard trees to fill the call we have for this fruit. These varieties are \$1.25 each.

Early Golden—Small, but of good quality. Orange colored flesh and skin. Ripe first week of August.

Harris—A bright yellow, high quality favorite in New York. Ripe the latter part of July.

Montgamet—As good as the best and probably harder than most good varieties. Ripe second week of August.

GRAPE VINES—Listed in Approximate Order of Ripening

Strong Two Year Old Plants

Moore's Early, 40c—Purplish black, hardy, good quality, juicy. Standard early grape of New York.

Winchell, 75c—Light green, one of the earliest and best green grapes, hardy, very productive, a good keeper.

Campbell's Early, 40c—Dark purplish black, clusters large, good quality, hardy, productive, juicy.

LUCILE, 40c—Red, the vine of Lucile is unsurpassed in vigor, health, hardiness and productiveness.

Worden, 25c—Glossy black, juicy, very good, large clusters, hardy, productive.

Brighton, 35c—Red, large clusters, handsome, vinous flavor, one of the best red grapes.

Delaware, 35c—Light red, delicious and handsome fruit, one of the best American table grapes.

Empire State, 45c—Pale yellowish green, hardy, very juicy and tender, one of the best green table grapes.

Moore's Diamond, 30c—Green. In quality ranks next to Winchell, hardy, productive, a good all round grape.

Salem, 25c—Very dark red. A valuable garden grape of high quality, unusually hardy.

Niagara, 25c—Green. Clusters large, productive, quality excellent, the leading American table grape.

Concord, 15c—Black, hardy, productive, refreshing flavor, a handsome table grape known to all.

Agawam, 25c—Dull purplish red, large clusters, rich, sweet, attractive, keeps till mid-winter.

Catawba, 20c—Dark purplish red, sweet, rich, high quality, attractive, hardy, productive.

Per 12	Per 25	Per 50	Per 100	RASPBERRIES	Color	Remarks
\$1.15	\$2.00	\$3.50	\$6.00	Columbian	Purple	Purple berries are apt to be larger than reds and blacks, and this is one of the largest. High flavor, hardy, productive. The berries are large, deep red in color. One of the most widely grown varieties, distinguished by it's flavor. The new everbearing raspberry which we believe will fulfill predictions. Produces heavy crops of fine fruit till frost. Perfectly hardy and immensely productive. Large; beautiful amber color; firm, sweet and luscious. Very productive, and hardy enough for extreme climates. One of the old standbys of proved merit. The berry is very attractive and very delicious. Very sweet and juicy, with a flavor of it's own. An extremely heavy producer; hardy in the coldest climates. Sweet and delicious in flavor; unusually large in size; firm and shining black. A new variety which seems so fine we have added it to our list for the first time. This has come to be one of the most popular black raspberries in America. The fruit is grayish black, very large, meaty and firm. Fruit not so large as Cuthbert but of very good size, and is produced all summer and fall. It is of excellent flavor.
1.15	2.00	3.50	6.00	Cuthbert	Red	
1.15	2.00	3.50	6.00	Erskine Park	Red	
1.15	2.00	3.50	6.00	Golden Queen	Yellow	
1.00	1.75	3.00	5.00	Gregg	Black	
1.25	2.25	4.00	7.00	Herbert	Red	
1.00	1.75	3.00	5.00	Honey Sweet	Black	
1.00	1.75	3.00	5.00	Plum Farmer	Black	
1.00	1.75	3.00	5.00	St. Regis	Red	

RHUBARB

McKay's Mammoth—A very strong growing, tender, delicious variety. Every garden should have a row of rhubarb. Plant any time, burying the whole plant about three inches from the surface. You almost can't kill them.

15c Each

\$1.50 per 12

ASPARAGUS

McKay's Giant—A most delicious variety and a great cropper.

\$.75 per 25

\$1.35 per 50

\$1.90 per 100

Per 12	Per 25	Per 50	Per 100	BLACK-BERRIES	Remarks
1.25	2.25	4.00	7.00	El Dorado	Medium size, jet black berries; flavor sweet and rich; very hardy. Early season; good size, handsome fruit; juicy, sweet and good quality. Medium size, sweet and melting; very hardy and enormously productive. Very large; fine quality, without core; very productive and hardy.
1.25	2.25	4.00	7.00	Mersereau	
1.25	2.25	4.00	7.00	Snyder	
1.25	2.25	4.00	7.00	Taylor	



PAEONIES

The plants are hardy and require no winter protection. The roots should not be planted too deep as it lessens the blossoms. These are splendid for cutting, rivalling even the rose in perfection of bloom and coloring.

Andre Laurias—Very large, compact, globular, rose type. Fragrant, dark rose color, shading deeper on center. 60c each.

Couronne D'Or—Very large blooms, fragrant, pure white with yellow center. Very late. 75c each.

Duke of Wellington—Sulphur-white, large and well formed; fragrant; late mid-season. 75c each.

Faust—Hydrangea-pink, shading to lilac-white at center, with well shaped blooms. 55c each.

Festiva Maxima—Very large, superb white blooms. Fragrant, early, one of the best whites. 65c each.

Francois Ortegat—Semi-double; purplish crimson with very striking golden yellow anthers. Mid-season. 65c each.

Rosea Plena Superba—Delicate pink and salmon; a healthy grower with very full flowers. 50c each.

CLIMBING VINES

American Ivy, (Virginia Creeper), 30c—Rapid grower. One of the best vines for covering walls, trees or verandas. Rich crimson foliage in autumn.

Ampelopsis Veitchii, (Boston Ivy), 40c—Clings to stone, brick or cement only; forms a dense green screen which turns to rich crimson in autumn. Bears clusters of dark blue berries.

Clinging Woodbine, 30c—A variety of the American Ivy which clings to any surface.

Clematis, Henryii, 75c—Best of the large flowering white varieties. Grows ten to twelve feet. Blooms in August.

Clematis, Jackmanii, 75c—The best purple variety. Large blossoms of velvety richness from July to September.

Clematis, Madam Edward Andre, 75c—Grows eight to ten feet. Like Jackmanii except that it is rich red in color. July to Sep.

Clematis, Paniculata, 45c—Hardy, fine foliage, profuse bloomer. The white flowers are star shaped and fragrant.

Dutchman's Pipe, \$1.25—The very large heart-shaped leaves afford a perfect screen for veranda or trellis use.

Evergreen Bittersweet, 50c—For trellis use. Carries its green foliage the year round. Bears a profusion of bright red berries in fall and winter.

Hall's Japan Honeysuckle, 40c—A profusion of very fragrant flowers, white changing to yellow. July to September. Sun or shade.

Silver Lace Vine, 90c—A new, very fine, rapid growing flowering vine. Attains height of 25 feet or more. Great foamy sprays of white flowers through summer and fall.

Trumpet Vine, 35c—Large trumpet shaped orange red flowers in August. A fairly bushy, rank grower, making a fine screen.

Wisteria, (Chinese Purple), 75c—This has foot long hanging clusters of pale violet, pea shaped flowers. Sometimes slow in becoming established, but after that it is a good grower. Its blooming

season in May is of unusual length, and occasionally it produces a lighter crop of blooms in August. We regard Wisteria as without a peer in the entire list of ornamental climbers.

Wisteria, (Chinese White), 85c—This white wisteria possesses the same good qualities of purple wisteria, except it is a somewhat lighter grower.

The pure white flowers are wonderfully attractive and bloom in May.



SILVER LACE VINE—The plant shown here was set out only sixteen months before the photograph was taken.

ROSES Grown for Lovers of ROSES

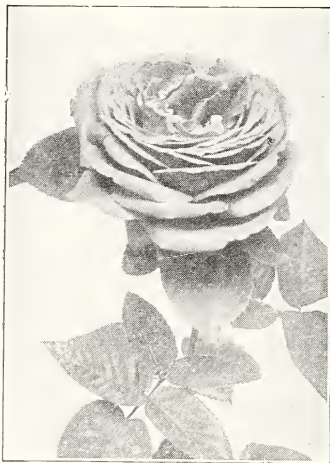
Our Bushes Grow and Bloom

Our plants are two years old, healthy and strong in size according to the natural habit of growth of the variety. In vigor we believe they equal the best plants obtainable, such as will bring the full measure of delight and satisfaction anticipated at planting time. Early last summer we planted out forty of our own bushes to check the indetermination of the varieties. This was done on June 2nd, at the beginning of a very dry season. They were tramped in well while being planted and were watered a little the first two days. This very late date of planting gave them a real disadvantage to overcome; nevertheless all but four plants lived. By the latter part of July they were blooming and continued to bloom until the early part of October. Remember always that to hoe the soil weekly and keep the flowers well cut, helps to keep roses blooming all summer.

How to Trim Roses

As soon as you receive roses from us, trim them all to within five or six inches from the ground. Each following year, the Hybrid Teas and Perpetuals should be trimmed just about the same as when first planted; because, they bloom from wood which grows the same year, and the rule is **keep them growing and you keep them blooming.** This severe trimming will keep them

growing. After their first year, the Climbers and Ramblers should receive more moderate trimming than the others; because, they bloom from last year's wood growth, and if you cut it all away, you get no bloom.



GENERAL JACQUEMINOT



KILLARNEY



LADY HILLINGDON

RAMBLERS AND CLIMBERS

Climbing American Beauty, 45c—Same color, size and fragrance as American Beauty, with the addition of the climbing habit. The flowers are produced in great profusion.

Dorothy Perkins, 30c—Gives a great profusion of clear shell-pink flowers. Without doubt one of the most beautiful of the ramblers.

DR. VAN FLEET, 45c—This rose appeals to everyone because of its dainty color and exquisitely shaped buds and flowers, which are borne on very long stems. The long pointed buds are a rich flesh-pink; in the open flower the outside petals are faintly suffused with pink, the center is a rich shell pink.

Excelsa, 30c—This is an improved Crimson Rambler: and is sometimes called the Red Dorothy Perkins. It has a vivid crimson color very similar to Crimson Rambler. What makes this rose particularly desirable, is that the foliage does not become rusty or unsightly later in the season, like the Crimson Rambler. The leaves of Excelsa are glossy and bright all summer long until frost. A splendid Rambler.

PAUL'S SCARLET CLIMBER, 70c—One of the new climbers which has suddenly become very popular. The bloom is a vivid red shaded with crimson, and makes a brilliant display for a long period of time. The color is a good deal like that of the General Jacqueminot. The blooms are semi-double, of medium size, and are produced very profusely.

SILVER MOON, 50c—This is one of the newer climbers, which has a semi-double flower of very large size, the largest being four and one-half inches in diameter. The petals are pure white, beautifully cupped, forming a clematis-like flower. The large bunch of yellow stamens in the center adds to its beauty.

Tausendschon, 45c—Flowers white or very light pink, changing to various shades of rosy-red. These are produced in trusses, each truss a bouquet in itself.

White Dorothy Perkins, 30c—This is as fine as any of the ramblers and has no rival as a white climber. The small blooms are wonderfully dainty.

Yellow Rambler, 25c—Bright yellow, changing to canary-yellow; produced in pyramidal clusters.

Tea, Hybrid Tea and Everblooming Roses

COLUMBIA, 60c—A very large rose, the wide open flowers often measuring six inches across. The color is true pink, deepening a little as the buds open. All the shades of color deepen as the flowers mature; and do not wash out as some roses do.

DUCHESS OF WELLINGTON, 60c—This is an intense saffron yellow, stained with rich crimson. The flowers are fairly full, with large petals, delightfully fragrant and very free blooming.

Frau Karl Druschki, 60c—Pure white blooms, very large without being in the least coarse. This is one of the finest white roses.

GEORGE AHREND'S, 60c—This has been called "Pink American Beauty." It is very delicately colored; and is becoming as popular as the old American Beauty, which it resembles in shape.

Gruss an Teplitz, 60c—Deep vivid crimson or scarlet, rather different in color from any other rose. One of the brightest colored roses.

Kaiserin Augusta Victoria, 60c—Delicate straw or cream white. The blossoms last well and are fine both in bud and when open. The bushes are unusually hardy and make strong growth.

Killarney, 60c—Most delicate flesh pink color. Particularly beautiful in the bud, which is very long and pointed.

Lady Hillingdon, 60c—A brilliant deep apricot-yellow. One of the finer and more desirable yellow roses.

La France, 60c—Called the Queen of all the roses. The color is a beautiful bright silvery pink with pale lilac shading.

LOS ANGELES, 75c—This is a wonderful combination of flame pink, coral and gold in color. The flowers are large, beautifully shaped and fragrant. The plant is a strong grower and a fine bloomer.

Mme. Caroline Testout, 60c—Extra large flowers, of a brilliant, shining pink, with brighter center; full and globular in shape. Very fragrant and extremely free blooming.

MRS. AARON WARD, 60c—This is a coppery orange color in the bud, and becomes a lighter golden orange when further developed. Even in full bloom it is a fine yellow rose.

Hybrid Perpetual and Miscellaneous Roses

American Beauty, 45c—Deep pink or crimson. Intensely fragrant and a great favorite known to all.

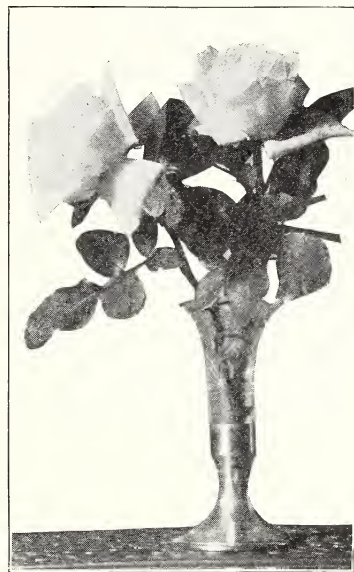
General Jacqueminot, 45c—Dark shining crimson color, with shapely buds and handsome blooms.

Marshall P. Wilder, 45c—Extra large and semi globular in form. The color is a deep, rich, glowing red.

Mrs. John Laing, 45c—Soft pink color, beautiful form and very large size. It is exceedingly fragrant.

Paul Neyron, 45c—Clear pink color. This is said to be the largest rose in cultivation.

Prince Camille de Rohan, 45c—Very dark velvety crimson, almost black. Very double and delightfully sweet.



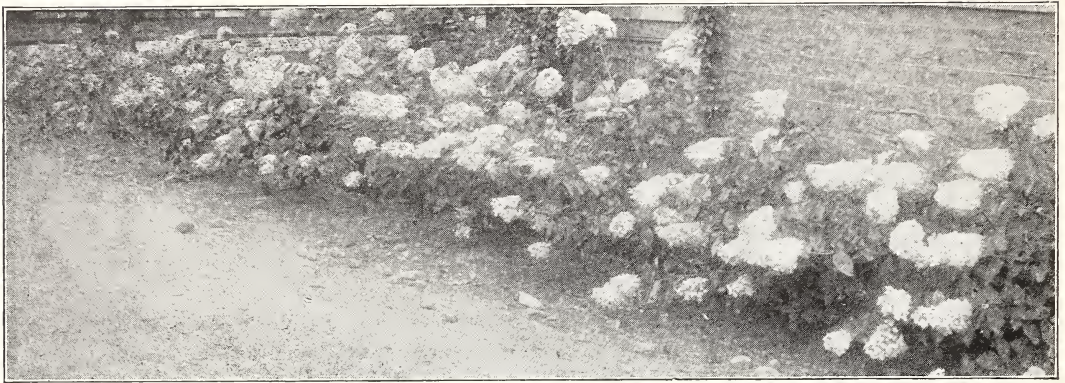
FRAU CARL DRUSCHKI



MARSHALL P. WILDER



A GARDEN HEDGE OF DOROTHY PERKINS



Hydrangea Paniculata makes a Beautiful Hedge

Price each	HARDY SHRUBS	Height Growth Feet	Season of Bloom	Color of Bloom	Remarks
\$1	Almond, Double Red	5 to 8	May	Rose	Covered with showy, double, rose-like flowers. Good as individual specimen or in shrubbery border.
45c	Althea, Double Purple	8 to 10	Aug. Sept.	Light Purple	The Althea or Rose of Sharon is excellent for shrubbery border. They are thrifty upright growing, remarkably free from insect pests. Particularly valuable since they bloom later than the season of most other shrubs.
45c	Althea, Double Pink	8 to 10	Aug. Sept.	Pink	
45c	Althea, Double White	8 to 10	Aug. Sept.	White	
45c	Barberry, Japan	4 to 6	May	White	Flowers inconspicuous, green summer foliage, brilliant fall colors, bright red winter berries.
90c	Bechtel's Crab	10 to 15	May	Pink	A beautiful tree in bloom; flowers resemble miniature roses; borne profusely; double and fragrant.
35c	Butterfly Bush	4 to 5	July to Frost	Lilac	Long, graceful stems bearing beautiful Lilac colored clusters of miniature flowers. Very hardy and bloom first season.
45c	Deutzia, Crenata	5 to 6	June	Rose	Tea green foliage, holding color all season. Spikes of sweet scented double flowers.
45c	Deutzia, Pride of Rochester	6 to 8	May	Pinkish White	Profuse large double flowers, blooming before other Deutzias.
50c	Forsythia, Suspensa	6 to 8	April	White Yellow	Called drooping golden bell . Branches gracefully arching. Very full flowering. The earliest to bloom.
45c	Honeysuckle Red Tartarian	6 to 8	May	Bright Pink	Attractive, upright growing, with abundance of fragrant flowers in spring and red fruit in autumn.
50c	Hydrangea, P. G. Busn Form	6 to 8	July Sept.	White	Immense white blooms, changing to pink, later to bronze. Prune each Spring to keep low and bushy.
50c	Hydrangea, Hills of Snow	6	July Sept.	White	Blooms are similar to the familiar snowball, but are larger; conspicuously white and imposing.



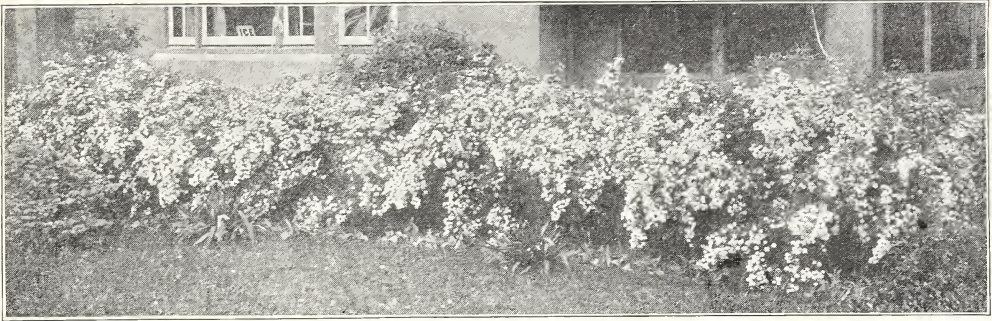
Bloom of Weigela Eva Rathke



Bloom of FORSYTHIA



LILAC



SPIREA VAN HOUTTEI—Rivals even the Hydrangea

Price each	SHRUBS	Height Growth Feet	Season of Bloom	Color	Remarks
50c	Lilac, Common	8 to 10	May	White or Purple	Known to all. Prune well after each blooming, if it is desired to keep them bushy.
45c	White or Purple Snowball, Common	6 to 8	May	White	Dense and spreading in growth, very decorative while in bloom. Flowers in great profusion.
45c	Spirea, Anthony Waterer	2 to 3	July	Bright	Dwarf growing, compact, with good dense foliage. Will bloom until fall if flowers are cut as they fade.
40c	Spirea, Prunifolia	5 to 6	Aug.	Crimson	Small flowers in dense racemes along the slender branches. A pretty shrub with dark green, shining foliage.
30c	Spirea, Van Houtte	6 to 8	May	White	Flowers in flat clusters on arching branches. A handsome and useful shrub, the best of the Spireas.
75c	Weigela, Candida	6 to 8	June	White	Bushy in growth. Flowers large and quite showy. Will bloom all summer.
60c	Weigela, Eva Rathke	5 to 6	Aug.	Crimson	The hardiest of the Weigelas; free blooming; flowers very handsome and fragrant.
50c	Weigela, Variegated	5 to 6	June	Rose	Dense in growth. Leaves variegated with white and yellow. A handsome shrub for foliage effect.

Planting Distances

Apples, Standard.....	30 to 40 ft.	Apricots, Standard.....	16 to 18 ft.	Plums, Dwarf.....	10 to 12 ft.
Apples, Dwarf.....	10 to 12 ft.	Apricots, Dwarf.....	10 to 12 ft.	Quinces.....	10 to 12 ft.
Apples, Dwarfed on Paradise.....	6 to 8 ft.	Cherries, Sweet, Standard.....	18 to 20 ft.	Grapes.....	8 by 10 ft.
Pears, Standard.....	18 to 20 ft.	Cherries, Sweet, Dwarf.....	10 to 14 ft.	Raspberries, Red.....	3 by 6 ft.
Pears, Dwarf.....	10 to 12 ft.	Cherries, Sour, Standard.....	14 to 18 ft.	Raspberries, Black.....	3 by 6 ft.
Peaches, Standard.....	16 to 18 ft.	Cherries, Sour, Dwarf.....	10 to 12 ft.	Blackberries.....	5 by 7 ft.
Peaches, Dwarf.....	10 to 12 ft.	Plums, Standard.....	15 to 20 ft.	Asparagus, in beds.....	1 by 1½ ft.

OUR GUARANTY—SUBSTITUTIONS

Orders for the Orchard—We guarantee our customers against willful change of labels, and exercise the greatest care to have every variety true to name. It is to be understood between purchaser and ourselves that our liability shall not be greater than the amount of the purchase price. If out of varieties ordered, we shall omit such varieties and refund amount paid for them, unless the order indicated second choice of varieties.

Orders for the Home Garden—On these orders, when out of a variety, we substitute a variety as good, and as nearly as possible like the one ordered, unless you instruct us not to substitute.

OUR GUARANTEE—REPLACEMENTS

We will replace at half price such trees as do not live, provided you report by August 1st following the fall or spring your order was shipped.

MANNER OF SHIPPING

All shipments are f. o. b., express or freight office, Geneva, N. Y., where our responsibility ceases. All shipments are made by express except (1) orders large enough to require boxing, and (2) unless you positively order freight shipment. It is rarely practicable to ship full size trees by mail.

TERMS

Our terms are **cash with order**. This is no reflection on the credit of our customers, but is necessary to handle our mail order business in the easiest possible way. Remit by postal, or express order, or your own personal check. We do not ship C. O. D.

VAN DUSEN NURSERIES, C. C. McKAY, Manager, GENEVA, N. Y.

NIAGARA



DELAWARE



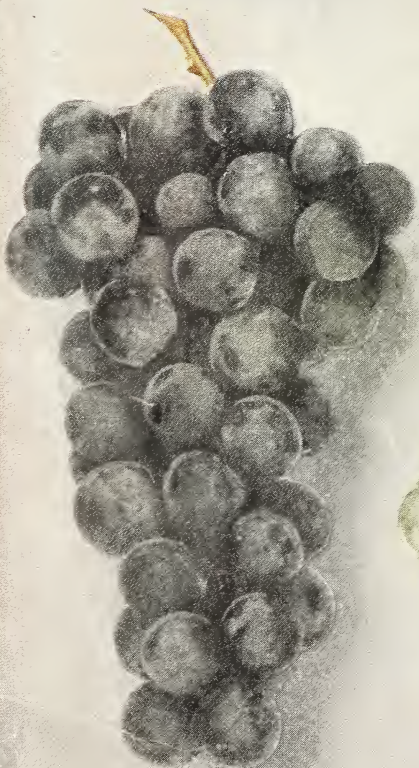
MOORE
EARLY



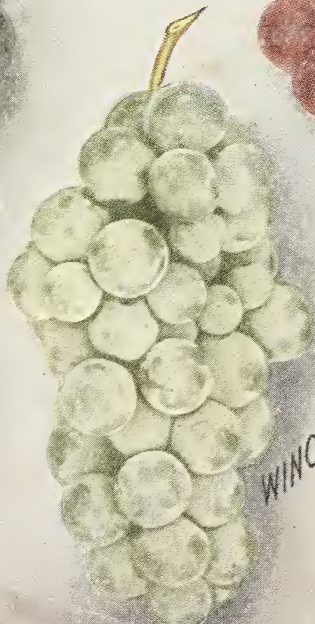
ARBOR COLLECTION

This page shows the six varieties of our Arbor Collection — the choicest possible collection, for so few varieties.

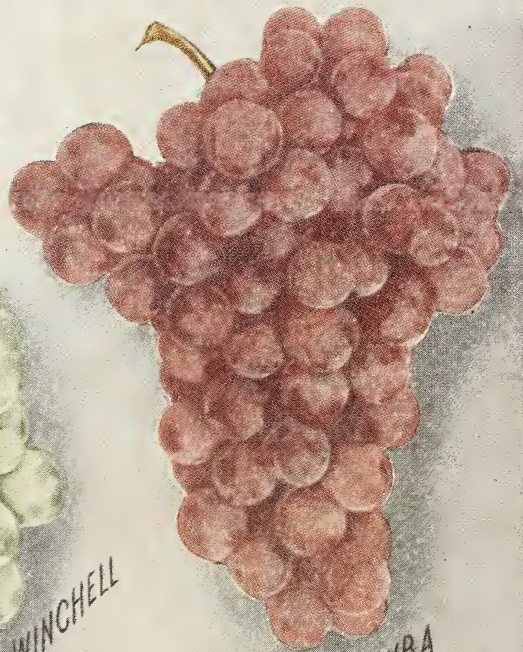
1 Catawba	\$.20
1 Campbell Early	.40
1 Delaware	.35
1 Niagara	.25
1 Moore Early	.40
1 Winchell	.75
List Price	2.35
<u>Collection Price</u>	2.00



CAMPBELL
EARLY



WINCHELL



CATAWBA