

Historic, archived document

Do not assume content reflects current scientific knowledge, policies, or practices.

62.67

RECORDED
FEB 17 1923

CALL'S NURSERIES

PERRY
OHIO
1923



These **INTRODUCTORY LINES** are practically a reproduction from last spring's book. Why should we change the words, when the facts remain the same?

WHATEVER else may be forced upon your attention this spring, with an invitation for investment, the purpose and desire of this modest catalog is to inspire an increased interest in the planting of small home orchards; and more complete ornamentation of the smaller homes. If our effort is successful, we will have done you a real service; at the same time advancing our chance of obtaining your patronage. We have nursery stock to sell.

THE WAY-SIDE MARKET

It is a known fact that most of the smaller fruit growers of the country are selling their produce direct to the consumer, almost from door to door; thus eliminating the middle-man's profit. To verify this, just take a drive along any main country road of your vicinity and note the innumerable fruit stands scattered along the way. The tourists, city shippers and mere joy-riders whose cars so constantly attend these way-side markets are ample evidence that it is now possible for the farmer or fruit grower to dispose of his entire produce within the boundaries of his own home.

PROFIT IN FRUIT TREES

In our opinion, the farmer or fruit grower cannot make a better investment than to plant an orchard or vineyard, right now while grains are at bottom prices, and fruit, berries, grapes, etc., are bringing good prices. The plantings need not be large; but carefully selected and balanced. Our years of experience could be a real help to you here.

WHAT TO PLANT

In selection of varieties to plant, we cannot advise too strongly the planting of old, standard sorts. Too many nurserymen give publicity to a pear, apple, peach or cherry before properly investigating its merits. Hence the public is disappointed in the results, often paying \$3 or \$4 for an apple or other tree, whose fruit is no better than his old orchard has yielded, year after year.

WHERE TO GET IT

Call's Nurseries is now in its 46th year. We have ever carefully guarded ourselves against over-enthusiasm as to new and untried varieties of fruits. This policy has saved us much embarrassment, and our customers many disappointments and losses. Not that our lists are behind the times;—our older friends will have noted the appearance from time to time of our new varieties, but only those kinds which have proved their worth. We may do a certain amount of speculative propagation, but our patrons are never invited to share the expense, except on the genuine successes. You find us today with broad acres, well stocked with thrifty, first class trees and plants, in a selected, tried and true list of varieties.

Labor conditions are now so greatly relieved, that we can assure our customers of prompt and expert attention. Should you desire any information not covered by our catalog, please feel free to write us. We are always glad to hear from old friends and customers, and can assure new patrons of our appreciation, and a desire to serve.

Sincerely,

CALL'S NURSERIES

TERMS---PLEASE READ

1. Please send in your orders early. First orders will, as far as practicable, be served first.
2. We usually commence shipping in the Spring, about the first of April, and in the Fall, about October 15.
3. Write your name, post office and shipping address very plainly to avoid any mistake.
4. We reserve the right to substitute where necessary unless your order plainly states, "No Substituting."
5. Parties unfamiliar with all the newer varieties of fruits who desire assistance in making selection of variety can depend upon our judgment and integrity. Just state the quantity wanted, whether early or late, sweet or sour, etc., and we will give all such orders our personal attention, and furnish the best varieties grown. If you have plenty of certain varieties growing better so state in order to avoid repetition in our selection.
6. Prices herein given are for stock well packed, f. o. b. Perry, Ohio. The expense of packing a small order is nearly as much as a large one; hence we cannot accept an order for less than \$3.00.
7. We advise having all small orders shipped by Express as express service reduces to a minimum the danger of damage to stock by undue delay in transit.
8. **TERMS**—Our terms are cash. In ordering goods to be sent C. O. D., **ONE-FOURTH** the amount of the bill must accompany the order.

Planters requiring a large amount of stock, need not send all the money with the order. You can send enough to secure the order, and the balance any time before shipment.

- 5 or more trees of any variety are sold at 10 rates.
- 25 or more trees of any variety are sold at 100 rates.
- 250 or more trees of any variety are sold at 1000 rates.

CLUB ORDERS

If your order amounts to \$20.00 or more, you may select all stock at 100 or the lowest rates quoted. Get some of your friends or neighbors to join with you in ordering and take advantage of this offer. If the order is for more than one person, by giving the stock wanted for each one, we will so pack it that each can have it separate, although all are shipped in one box or bale.

We Guarantee Satisfaction

We exercise the greatest care and give our personal attention to cutting buds and scions and packing your orders, but with all precautions mistakes sometimes occur. We hold ourselves in readiness, at all times, to replace, on proper proof, any tree, plant or shrub that may prove untrue to name; but it is mutually agreed between ourselves and purchaser, that our guarantee shall in no case make us liable for any sum greater than that originally paid for the trees or plants that prove untrue. We guarantee, furthermore, that any tree, plant, or shrub we send out to be alive and in good growing condition.

This Is Our Traveling Salesman

A Word With Our Customers

WE hope you will find many things of interest to you in it. We have not "boomed" any single plant creation for our own profit, but have listed only varieties we grow and know to be hardy and worthy of culture in the North Central States. We do not propose to waste any space in our Catalog showing you highly colored and exaggerated pictures of new and untried varieties which have not been proved to be worthy of planting. We prefer to put the extra money it would cost us to hire an expert catalog writer and do this, into the growing and handling of our stock. We have found this to be much more profitable to our customers as well as to ourselves. Every illustration in this Catalog is from an actual photograph and they will not mislead you in trying to make you believe you will get more than we are able to give you.

Our trees are all hardy and well matured. They stand transplanting much better than those which have been grown on hot, damp bottom lands, which are sometimes offered by some nurserymen. It has always been our aim to personally supervise the raising of every Tree and Shrub that we send out. We are exceedingly careful in obtaining our buds and scions, for in this one thing alone are we sure in getting trees true to name. When you buy trees from us you may be sure of the very best quality with good roots and not only true to name, but also the highest standard of that name.

We know that many nurseries offer stock at lower prices than ours. Some offer to pay the freight and offer every inducement to get your money. If you are looking for cheap stock, regardless of quality, do not send your orders here. If you wish the very best at reasonable prices, we shall be only too glad to receive your orders. We will fill your orders with the finest selected stock, packed in the best possible manner to carry any distance, and give it as much attention as could be given it were you here to attend to it yourself.

To those not acquainted with us, we wish to state that we have been in the Nursery business here in Perry since 1877. We have always dealt direct with planters. We employ no agents and send out no traveling salesmen, except this Price-Catalog. We have nearly Two Hundred Acres devoted to this business and our location (within one and one-half miles of Lake Erie), climate and soil are ideal for the successful propagation of all kinds of hardy Fruit and Ornamental Trees, Shrubs, and Plants. Perry is located about thirty miles east of Cleveland on The New York Central R. R., The N. Y. C. & St. L. R. R. and Cleveland, Painesville & Eastern R. R. We have every facility for the successful growing and handling of stock. We are located in the midst of one of the best fruit belts in the United States and are not bothered with plant diseases of any kind.

ABOUT SHIPMENTS. Please remember that we pack stock so that it will carry any distance and it may be on the road for two or three weeks or longer and not suffer to any extent whatsoever. If, through any unreasonable delay, your stock does not reach you in time to plant, we will duplicate your order or return the amount sent to us. You take no chances in dealing with an old reliable concern such as ours.

We shall be pleased to give you any advice or help you select varieties of Fruit or Trees and Shrubs for beautifying your home grounds.

We are interested in every tree we sell, for in their success depends our success. Our oldest customers are our warmest friends.

CARE OF TREES AND PLANTS

WHEN the Trees are received from the nursery, they should be examined and cared for at once. Do not delay. If they all cannot be set at once, the bundles should be opened and the trees separated, and heeled in the ground, so the moist soil will thoroughly cover the roots and exclude all air from them. Do not at any time expose the roots to the sun or air longer than is absolutely necessary. If they are dried from long exposure, bury them entirely in the ground or place them in water from twelve to twenty-four hours before planting.

Before any holes are dug, the land should be thoroughly plowed and the soil finely pulverized. It is best to have the field marked out and stakes driven where each tree is going to be set, so the trees will be absolutely in line. If the trees are to be set in the lawn or where the ground cannot be plowed, spade the ground for at least three feet in diameter and eighteen inches deep.

Just before planting, examine all the roots carefully and cut to a smooth surface any bruised or extra long roots with a sharp knife or pruning shears. It is best to trim all the roots somewhat.

The hole should be sufficiently large to admit all the roots without bruising or cramping and deep enough so the trees will stand one or two inches deeper than they stood in the nursery row. After the tree is placed in the hole, fill the hole about half full of top soil, then tramp down firmly. The top three or four inches of soil should not be tramped too firmly. Large or tall trees should be staked so the wind will not loosen the roots. If the soil is very dry, water should be poured into the hole after the hole is half filled with soil, then the dry soil should be placed on top.

Mulching with fine barnyard manure, sawdust, grass, weeds, or straw around the tree after it is set, not only helps shade the ground, but enriches the soil. Mulching keeps the soil from drying out and often spells the difference between success and failure when planting trees and shrubs.

Peach trees should be cut back from twenty-four to thirty-six inches from the ground and the side branches should all be cut off excepting four or five near the top and these should be cut back, leaving one or two buds on each branch to insure one good branch to form one of the four or five main or scaffold branches of the tree. Apples, cherries, pears, plums and quinces should be cut back to about four branches and these in turn should be cut back at least one-half. In all cases, avoid leaving branches where they will form crotches.

If these brief directions are carefully followed, OUR trees will all grow.

DISTANCES FOR PLANTING

Apples30 to 36 feet apart each way.
Cherries18 to 20 feet apart each way.
Peaches16 to 18 feet apart each way.
Pears18 to 20 feet apart each way.
Plums16 to 20 feet apart each way.
Grapes 8 to 10 feet apart each way.
Currants 4 to 6 feet apart each way.
Gooseberries	.. 4 to 6 feet apart each way.
Raspberries	..3 to 4 by 5 to 7 feet each way.
Blackberries	..3 to 4 by 5 to 7 feet each way.
Strawberries	..1 by 3½ to 4½ feet each way.

NUMBER OF TREES TO AN ACRE

30 feet apart each way.....	50
20 feet apart each way.....	110
18 feet apart each way.....	135
16 feet apart each way.....	170
16 feet apart each way.....	170
8 feet apart each way.....	680
5 feet apart each way.....	1210
5 feet apart each way.....	1210
4 feet apart each way.....	1742
3 feet apart each way.....	2723
3 feet apart each way.....	4840

Rule. Multiply the distance in feet between the rows by the distance the plants are apart in the rows and the product will be the number of square feet for each plant; which, divided into the number of feet in an acre (43,560), will give the number of trees to the acre.

Certificate of Nursery Inspection

No. 431

Columbus, Ohio, September 21, 1922.

THIS IS TO CERTIFY, That the nursery stock grown by CALL'S NURSERIES, of Perry, County of Lake, State of Ohio, consisting of General Nursery Stock, has been inspected by a duly authorized inspector, in compliance with Section 1126, General Code, and has been found apparently free from dangerously injurious insects and plant diseases.

Valid until September 15, 1923, unless revoked.

(Signed) BOARD OF AGRICULTURE OF OHIO,

E. C. COTTON, Chief of Division.

L. J. TABOR, Director of Agriculture.

WE GUARANTEE SATISFACTION



Apples

APPLES grow well on any good soil, not too wet. Rough, hilly portions of the farm, when planted to apple trees, often become the most productive parts of the farm. Our trees are grown here in our nurseries and no stronger, better rooted or better matured trees are to be had. We have described only the leading varieties, but we grow and can supply any variety of merit. By making a judicious selection, you can have apples nearly the whole year.

PRICES OF APPLE TREES

	Each	Per 10	Per 100
EXTRA FINE, XX, 5 to 7 feet.....	\$0.85	\$7.50	\$70.00
First-class, 4 to 5 feet.....	.75	7.00	60.00
First-class, 3 to 4 feet.....	.60	5.50	50.00
First-class, 1 year, 4 feet and up.....	.50	4.50	40.00

SUMMER APPLES

Golden Sweet. Large; yellow; sweet and tender. A good grower and very productive. August.

Red Astrachan. Large; deep crimson; good quality. A popular and productive early market variety. July.

Sweet Bough. Large; yellow and very sweet. Extra good for dessert. Regular bearer. August.

Yellow Transparent. Medium-size; white; tender and juicy. Bears in from two to four years. July.

AUTUMN APPLES

Autumn Strawberry. Medium streaked; tender, juicy, sub-acid, fine; vigorous and productive. September and October.

Duchess of Oldenburg. Large; yellow, streaked with red; juicy; very productive. Bears at an early age. Sept.

Gravenstein. Very large; striped red; fine quality. Very popular variety. Sept. to Oct.

Lowell (Greasy Pippin). Large; bright yellow with oily skin. Rich acid flavor. Sept.

Maiden Blush. Medium; smooth; pale yellow with red cheek; tender. Bears at an early age and is very productive. Sept. to Oct.

Munson Sweet. Medium-size; yellow with red cheek; good fall sweet apple. Sept.

Wealthy. Medium; whitish-yellow, shaded with deep crimson; flesh white; prolific and bears at an early age. This variety bears in the fall and keeps well to Feb. One of the most valuable market varieties grown.

Western Beauty. Large; round; yellow shaded with carmine; excellent quality.

WINTER APPLES

Bailey Sweet. Large; oblong; deep red; tender and delicious. Nov. to Feb.

Baldwin. Large; bright red; prolific. One of the best and most popular varieties grown. Dec. to March.



Apples—Continued



YELLOW TRANSPARENT

Belmont (Gate). Good size; yellow; skin somewhat oily; of very high quality and deserves a place in every home orchard.

Ben Davis. Medium-size; red striped; rather coarse grained; good market variety; sure cropper. Dec. to April.

Delicious. Large; brilliant red; flesh very fine, crisp and highly aromatic. Nov. to March.

Fameuse (Snow). Medium; deep crimson skin; flesh snow white, best quality. Nov.

Grimes' Golden. Good size; yellow; crisp and juicy. Very productive and of the highest quality. Jan. to April.

Golden Russet. Medium-size; dull russet red tinge; tree very hardy and large, sure cropper. Feb. and March.

Hubbardson Nonesuch. Large, round, pale red. Flesh tender and crisp. Good grower and bearer and should be widely planted. Comes into bearing early. Nov. to Jan.

Jonathan. Medium; yellow with red stripes; flesh white, tender, juicy and rich. One of the best for table and market. Very productive. Nov. to March.

King. Very large; red striped; yellow flesh. One of the best Northern varieties. Nov. to Jan.

McIntosh Red. Large; deep crimson; very attractive; valuable for home and market. Nov. to April.

Northern Spy. Greenish-yellow, striped with red; late keeper; rich, delicious and one of the finest flavored apples ever grown. Jan. to May.

Rhode Island Greening. Greenish-yellow; large and round. Flesh yellow, fine grained, tender, crisp and juicy. Fine for cooking. Nov. to March.

Rome Beauty. Large and beautiful; yellow shaded and striped with red; flesh white, tender, crisp and juicy. Very profitable for market and fine for home use. Dec. to Feb.

Roxbury Russet. Large; round; yellow covered with russet. Good flavor and especially recommended for kitchen or market. Very hardy and productive. Dec. to May.

Tolman Sweet. One of the best sweet winter apples. Dec. to March.

Stayman's Winesap. An improved Winesap, but larger and more prolific. A good market variety. Nov. to Feb.

Wagner. Medium; dark red; mild, tender and excellent. Very prolific and bears at an early age. Dec. to March.

Winter Banana. Fancy market variety; well formed; yellow shaded with red; flesh yellow, with rich aromatic banana flavor. Good grower and bearer. Fruits in the fourth year. Dec. to April.

York Imperial. Medium; white, shaded with crimson; flesh firm, crisp and juicy. Nov. to Feb.

Crab Apples

	Each	Per 10
First-class, 5 to 6 feet, 2 yrs.....	\$0.90	\$8.50
First-class, 4 to 5 feet, 2 yrs.....	.80	7.50

Hyslop. Large; purplish-red; popular variety. Grows in clusters.

Red Siberian. Medium; yellow with scarlet cheek; bears in clusters at an early age.



Cherries

CHERRIES do well on soils too thin for almost any other fruit, but the finest fruit is obtained by growing them on deep, mellow, dry soil. In transplanting cherry trees, the roots should never be allowed to become dry before planting. When once established, they are exceptionally hardy and profitable. Sour varieties planted along roadsides not only make beautiful driveways, but yield very profitable crops. All varieties make desirable lawn trees.

LARGE MONTMORENCY

One of the best of the sour varieties. We have the genuine Large Montmorency. No orchard is complete without some of these trees.

PRICES OF CHERRY TREES

	Each	Per 10
SWEET, 5 to 7 feet.....	\$1.25	\$11.00
SWEET, 4 to 5 feet.....	1.00	9.00
SWEET, 3 to 4 feet.....	.85	7.50
SOUR, 4 to 5 feet.....	1.10	10.00
SOUR, 3 to 4 feet.....	1.00	9.00
SOUR, 2 to 3 feet.....	.80	7.00



LARGE MONTMORENCY

SOUR VARIETIES

Brassington. Dark red, sprightly sub-acid and of the highest quality. A very thrifty and upright grower.

Early Richmond. Medium-size; melting and juicy; unsurpassed for cooking purposes; dark red and very productive. June.

English Morello. Medium to large; deep red; rich and juicy. Best late sour variety. August.

May Duke. Large; red; flesh very juicy and rich. A good early variety. June.

Montmorency Large. Red; flesh firm and excellent; good keeper and one of the best shippers. Ripens about ten days later than Early Richmond.

SWEET VARIETIES

Bing. Very large; dark brown, nearly black; flesh firm, sweet, rich and delicious. July.

Black Tartarian. Very large; black; juicy, excellent flavored flesh. Very productive. Late June.

Gov. Wood. Large; deep yellow, shaded red; very productive; excellent for canning.

Napoleon (Royal Ann). Magnificent cherry of large size; pale yellow with red cheek. Good for canning and shipping. July.

Windsor. Large; liver-colored; flesh firm and of highest quality; best late sweet variety. July.

Yellow Spanish. Large; yellow with red cheek. Very good variety. Late July.



Peaches

PEACH TREES grow well on any soil not too wet, but they seem to do the best on a sand or gravel soil. No better Peach trees are grown than we grow here. In offering this list of varieties to you, we have been very careful to select only the hardiest and most productive. We desire to call your attention to the Arctic Peach. This has proved to be the hardiest Peach ever grown in this section.

All varieties described below are freestone varieties with the exception of William's Favorite. We do not believe a better list of varieties of peaches for this latitude can be offered to planters.

PRICES OF PEACH TREES

	Each	Per 10	Per 100
EXTRA FINE, No. 1, 4 to 5 feet.....	\$0.40	\$3.50	\$30.00
EXTRA FINE, No. 1, 3 to 4 feet.....	.35	3.00	25.00
EXTRA FINE, No. 1, 2 to 3 feet.....	.30	2.50	20.00

Arctic. Bears full crops where all others fail. It is a large yellow freestone of the finest quality, ripening October 1st. To get the largest size fruit, it should be thinned in June.

Admiral Dewey. Large; yellow flesh; fine texture; hardy and productive. July.

Beer's Smock. Large; yellow; oval shape; good bearer and shipper. One of the best market varieties. Late Sept.

Capt. Ede. Large; yellow; excellent quality. Very hardy. An improved Elberta. Ripens ten days earlier than Elberta.

Carman. Large; Elberta shape; pale yellow with deep blush. Skin very tough; flesh very tender. Good shipper. Very hardy and one of the best white varieties for market. August.

Champion. Similar to Carman in size, color and shape. Probably the best flavored early peach. Very hardy. For home use, we know of no better early peach. August.

Crawford's Early. Very large; yellow with red cheek; excellent quality. Early August.



WILMA PEACH



Peaches—Continued



ROCHESTER PEACH

Crawford's Late. Very large; yellow with deep red cheek; yellow flesh with red stone. Excellent flavor. Late Sept.

Crosby. Medium; very hardy; yellow, splashed with streaks of carmine. Abundant bearer. Excellent for canning. Sept.

Elberta. Too well known to need description. August.

Fitzgerald. Large; bright yellow covered with red; flesh deep yellow; Canadian origin; very hardy; best quality. Early Sept.

Gold Drop. Medium size; golden color, both in flesh and skin, hardy and exceedingly productive; one of the very best canning peaches. Late Sept.

J. H. Hale. A widely advertised variety. Growth similar to Elberta. Fruit very large, globular; golden yellow covered with bright carmine. Flesh solid, yellow, excellent flavor. Fairly hardy.

Lemon Free. Large; color and shape of lemon; very hardy and productive. We know of no better all-round variety for home use. Sept.

Prolific. Large; flesh yellow, fine flavor; hardy and productive. A good orchard variety. Sept.

Rochester. A new sort, large, sweet and juicy. Good appearance; skin is yellow tinged with carmine; a good shipper. We have known these trees to bear two years after planting.

Salway. Large; flesh deep yellow, very rich and sweet. Good for canning and drying. Probably the best late sort. Oct.

Stump the World. An excellent late, white, freestone variety. Last of Sept.

William's Favorite. A large, handsome and hardy cling variety. Excellent shipper. Sept. 15.

Wilma. Resembling the Elberta, the parent; fruit is large, more rounded in shape, ripens about ten days later, is very attractive in color; a handsome peach. The trees are strong and sturdy with dark green foliage.

Yellow St. John. Large; round; fruit brilliant and showy; flesh yellow, juicy, sweet and fine flavor. One of the very best early varieties. Aug.



Pears

PEARS succeed best in a rather hard clay soil which will retard somewhat a too rank growth. This luscious fruit should receive more attention on the part of fruit growers. We are describing only the very best varieties. Varieties preceded by a star (*) can be supplied as dwarf trees. Dwarf pears bear at an earlier age and are very desirable for small gardens, where space does not permit the planting of the standard or larger growing varieties.

PRICES OF PEAR TREES

	Each	Per 10	Per 100
First-class Standard, 5 to 7 feet.....	\$1.00	\$9.00	\$80.00
First-class Standard, 4 to 5 feet.....	.90	8.00	75.00
First class Standard, Kieffer, 5 to 7 feet.....	.75	7.00	60.00
First-class Standard, Kieffer, 4 to 5 feet.....	.70	6.00	50.00

Dwarf Pears

No. 1, 4 to 5 feet Dwarf.....	.75	6.50	60.00
No. 1, 3 to 4 feet Dwarf.....	.60	5.00	45.00

AUTUMN PEARS

***Buerre d'Anjou.** Large; yellow with red cheek; fine grained; melting and excellent. Best late fall variety. Oct. to Dec.

***Duchesse d'Angouleme.** Very large; dull yellow; rich, buttery, juicy and excellent. Does best as a dwarf. Oct. to Nov.

Flemish Beauty. Large; greenish-yellow; sweet and rich. Excellent. Sept. and Oct.

Kieffer. Very large; handsome; very productive; unexcelled for shipping and keeping. It is one of the best Pears for commercial planting or the home orchard. Probably the most satisfactory pears to plant in this section. Oct. to Dec.

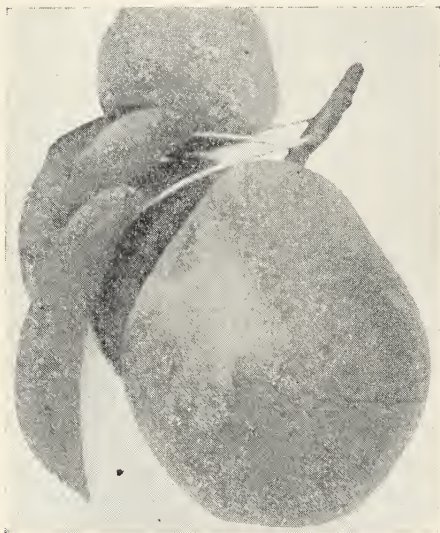
Lincoln. Clear yellow with red tinge; size and quality even better than Bartlett, which it resembles. Tree hardy, thrifty, long-lived and blight resistant. Not so well known or so widely planted as it should be.

***Seckle.** Small; yellowish-brown; russeted; very juicy, rich, buttery and fine-grained. One of the highest flavored pears grown. Sept. and Oct.

***Worden-Seckle.** Resembles Seckle, but is superior in size, color and shape. Good bearer and keeper.

WINTER VARIETIES

Lawrence. Medium; light yellow sprinkled with dots; buttery, rich and aromatic. The best Winter variety.



KIEFFER (Sure Bearer)

SUMMER PEARS

***Bartlett.** Large; smooth; juicy and excellent; good bearer and very desirable. August and Sept.

***Clapp's Favorite.** Large; similar to Bartlett in size, color and shape; ripens earlier. Productive. August.

***Wilder's Early.** Medium size; melting, sweet and pleasant flavor. One of the best in quality. Good keeping pear; does not rot at the core. Aug. 1.



Plums

PLUM TREES will succeed in almost any kind of soil. For home use, the poultry yard is an excellent place to plant plums; the trees furnishing shade and the poultry will pick up many insects.

PRICES OF PLUM TREES

	Each	Per 10	Per 100
No. 1, 5 to 7 feet.....	\$1.25	\$11.00	\$100.00
No. 1, 4 to 5 feet.....	1.00	9.00	85.00
Burbank plum on peach, 1 yr. 4 to 5 feet.....	.75	6.50	
Burbank plum on peach, 1 yr. 3 to 4 feet.....	.65	5.50	

Archduke. Large; black; prolific; one of the best late plums for home and market. Early Oct.

Abundance. Large; yellow; fine quality; hardy and productive. This is a Japanese variety and one of the best. August.

Bradshaw. Very large; reddish purple; juicy and pleasant; entire freestone when ripe. Blooms late and seldom fails to bear a full crop. August.

Burbank. Medium to large; flesh deep yellow; firm and juicy; fine flavor; small pit. Excellent for table and canning. Bears very young and produces heavy crops. August.

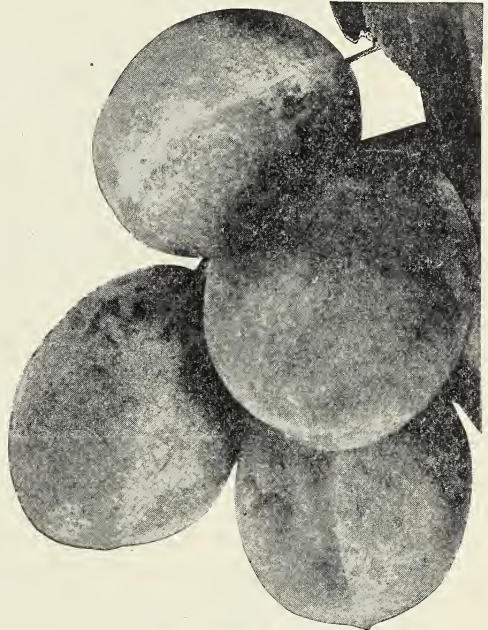
German Prune. Medium-size; long; purple; flesh green; sweet; freestone; excellent quality.

Plant a Prune tree. You will be surprised at the abundance of fruit they bear, fine for canning and demand good prices.

Gueii. Large; bluish-purple; flesh yellowish-green; sweet. Sept.

Lombard. Medium-size; somewhat oval in shape; violet red; juicy, pleasant and good. Very hardy and good. One of the very best varieties to plant. Do not fail to include some of these in your order. August.

Reine Claude (Bavay's Green Gage). Very large; greenish-yellow; fine flavor. Not surpassed in quality, beauty and size. Sept.



BURBANK PLUM

Shipper's Pride. Dark purple, large size fruit, fine for canning, unusual good keeper.

Shropshire Damson. Small; oval; dark blue; flesh very firm, green. Best for preserving. Oct.

Wickson. Very large; long; heart-shape; deep maroon red; flesh firm, meaty, rich yellow, rich and aromatic. Good grower and shipper; an excellent Japanese market variety. Early Sept.

Yellow Egg. Very large; oval; deep golden; a showy market plum; excellent for canning.



Quinces

QUINCE trees can be planted on low, damp heavy soils where other fruits do not thrive. They require little attention and are very profitable for market. No home garden is complete without a few quince trees.

PRICES OF QUINCE TREES

	Each	Per 10
Orange, Champion and Rea, 4 to 5 feet.....	\$0.90	\$8.50
Orange, Champion and Rea, 3 to 4 feet.....	.80	7.50

Champion. Good bearer; very large; good keeper; very productive. Bears extremely young.

Orange (Apple). Large; bright golden yellow; excellent flavor. Fine for domestic use. The standard variety. Oct.

Mulberries

VALUABLE for shade and ornamental trees as well as for fruit. Birds are very fond of the fruit, and for this reason Mulberry trees are often planted near cherry orchards for birds will leave cherries alone if they can obtain Mulberries.

PRICES OF MULBERRY TREES

	Each	Per 10
Russian, 5 to 7 feet.....	\$0.50	\$4.00
Russian, 4 to 5 feet.....	.45	3.50
Russian, 3 to 4 feet.....	.30	2.50
Downing, 4 to 5 feet.....	.90	8.00
Downing, 3 to 4 feet.....	.75	6.50

Downing's Everbearing. Fruit very large, black, handsome and best quality. Bears abundantly for three months in a year.

Russian. Very hardy and a rapid grower. Fruit small, but produced in abundance; varies from white to black.

Nut Trees

THE American Chestnut and other nut trees are becoming more popular each year. They make a mighty fine ornamental tree, and one would be surprised in the demand for Chestnuts. Don't fail to include some American Chestnuts on your list. No farm should be without a few nut trees.

PRICES OF NUT TREES.

	Each	Per 10
American Chestnut, 5 to 7 feet.....	\$0.75	\$6.50
American Chestnut, 4 to 5 feet.....	.65	5.50
American Chestnut, 2 to 3 feet.....	.50	4.00
Japan Chestnut, 2 to 3 feet.....	1.25	
Butternut, 3 to 4 feet.....	.80	7.00
Butternut, 2 to 3 feet.....	.70	
Walnut, black, 3 to 4 feet.....	.85	
Walnut, black, 2 to 3 feet.....	.70	

American Sweet Chestnut. Native Chestnut. Our trees are grown from selected large nuts.

Japan Chestnut. Dwarf grower; very productive; bears nuts of immense size at an early age.



Asparagus

For field culture make the rows four feet apart and plant about eighteen inches in the row. For small beds, plant two feet apart each way. Plant in furrows from twelve to fifteen inches deep; cover about three inches at first; then as plant starts, fill the trench gradually. A bed once started is good for several years.

PRICES ON ASPARAGUS

	Per 10	Per 100	Per 1000
Conovers Colossal, Columbian and Palmetto			
1 year	\$0.40	\$1.35	\$12.00
2 years50	1.50	14.00

Columbian Mammoth White. Strong, vigorous grower; very large white shoots that usually remain white as long as they are fit for use.

Conovers Colossal. The standard variety, large and tender, of excellent quality. No garden is complete without an Asparagus bed. Put one in this year and we assure you you will have no regrets.

Rhubarb

The soil for Rhubarb should be very rich and deep. Rhubarb requires no attention except an occasional dressing with manure.

We have an excellent strain of Linneaus Rhubarb. It is early, large, tender and much better in quality than the Rhubarb generally offered.

	Each	Per 10	Per 100
Rhubarb, Linneaus and Queen.....	\$0.15	\$1.20	\$10.00

Blackberries

For best results, plant in soil that does not dry out. Care should be exercised, however, not to plant in soil that is too wet or soggy. Keep the ground well cultivated or mulched so the moisture in the soil will be conserved. Prune same as Raspberries.

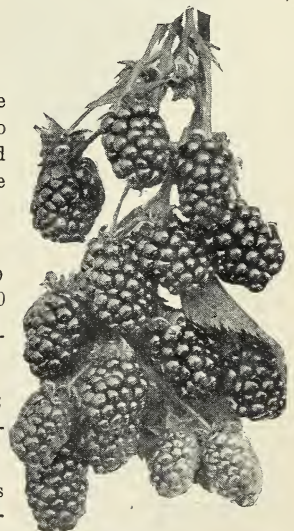
PRICES OF BLACKBERRIES

	Per 10	Per 100	Per 1000
Blower, Eldorado, Mersereau.....	\$0.70	\$6.00	\$50.00

Blower. One of the hardiest; enormously productive; highest quality; large, jet black and good shipper.

Eldorado. Very vigorous and hardy; berries very large; jet black; ripen together; very sweet; no core, excellent shipper and keeper. The leading variety.

Mersereau. Strong grower; hardy; productive, berries very large, fine quality, brilliant black, rich, sweet and unsurpassed as a shipper and keeper.



BLOWER



THE SMALL FRUITS Raspberries

WE HAVE carefully selected our Raspberry plants which we have used for propagating purposes. You are taking no chances in ordering your Raspberries from us. They are absolutely free from can-blight, blue-stem or other diseases.

PRICES OF RASPBERRIES	Per 25	Per 100
Red, Cuthbert, Marlboro, King	\$1.25	\$3.50
Black, Cumberland, Kansas, Plum Farmer	1.25	3.50
Purple, Columbian	1.50	4.00

PLUM FARMER

BLACK VARIETIES

Cumberland. Very vigorous; immense cropper; fruit very large, firm, excellent quality. Fine shipper and most profitable mid-season variety.

Kansas. Strong grower; stands drought very well; berries large, good quality. A good early variety.

Plum Farmer. Good bearer; thick meated, firm, excellent quality. Crop matures in a short period. One of the best varieties.

RED AND PURPLE VARIETIES

Columbian. Purplish color, rather soft, of excellent color; excellent flavor and unrivalled for canning, making jams, etc. Enormously productive.

Cuthbert. Very large; rich crimson, firm, sweet, rich. Leading red market variety.

St. Regis Everbearing. The main crop is equal to that of any other variety and one which bears fruit on the young shoots all summer until October. Color bright crimson; large, sweet; flesh meaty and very firm; a good shipper and very prolific.



Strawberries



PICKING STRAWBERRIES AT OUR NURSERIES.

STRAWBERRY land should be thoroughly plowed and enriched with good manure before any plants are set out. After the plants are set out, keep the ground well cultivated and free from weeds. In winter, after the ground is frozen, the plants should be mulched with straw or other coarse litter to prevent the spring thaws from lifting the plants out of the ground. Do not cover the plants too deep and be sure to remove the mulch before the plants start to grow. We have listed varieties which we know to be worthy of culture in this section.

Varieties marked (P) are perfect flowering, while those marked (I) are imperfect flowering, and a row of perfect flowering plants should be set within fifteen feet of them to insure perfect pollination.

DIP THE PLANTS IN WATER AS SOON AS RECEIVED and bury the roots in shady ground AT ONCE until ready to set out.

PRICES ON STRAWBERRIES

	Per 25	Per 100	Per 1000
Leading sorts	\$0.50	\$0.75	\$5.50
Chas. I. and Dr. Burrill.....	.75	.90	7.00
Fall bearers, Superb, Progressive and others.....	1.25	1.50	12.00
By mail30 per 10	.80 per 100	

EXTRA EARLY

*Excelsior (P), Michel's Early (P).

MEDIUM EARLY

Haverland (I), Jessie (P), *Marshall(P), *Sen. Dunlap (P), Warfield (I).

MEDIUM LATE

*Bubach (I), *Glen Mary (P), *Parson's Beauty (P).

LATE

*Brandywine (P), *Sample (I), Steven's Late (P), *Wm. Belt (P).

Varieties starred (*) are considered by leading Strawberry growers as being the very best for home and market. We have several other varieties and if you cannot

find any variety you desire in this list, we can probably supply it. Our plants are heavy, well rooted plants and we know how to pack them to reach you in first-class condition and live.

Progressive Fallbearing. This is the most vigorous grower of the fall bearers. Resembles Sen. Dunlap to some extent. Fair flavor and immense cropper when ripened in good sunny weather.

Superb Fallbearing. Plants are ideal growers. During the first year, most of the runners should be removed. This variety does best when planted and grown in hills. Berries are large, dark red, glossy and most beautiful of the fall bearers. Excellent flavor. Fair cropper. Bears from June until frosts come.



Currants

CURRENTS do best when planted in rich ground; cultivated well or mulched heavily. The old wood should be pruned out each year after the third year so the remaining shoots will have room to grow. Currants are easily cultivated, stand neglect well and respond liberally to generous cultivation. They are indispensable for table use, jellies, jams, etc.



PERFECTION CURRANT

	Each	Per 10	Per 100
Black Victoria, 1 yr.	\$0.15	\$1.20	\$10.00
Black Victoria, 2 yr.18	1.40	11.00
Fay's Prolific, 1 yr.12	.80	6.00
Fay's Prolific, 2 yr.15	1.00	8.00
Perfection, 1 yr.20	1.75	15.00
Perfection, 2 yr.25	2.00	18.00
Red Cross, 1 yr.15	1.00	8.00
Red Cross, 2 yr.20	1.25	10.00
Wilder, 1 yr.15	1.00	8.00
Wilder, 2 yr.20	1.20	10.00
White Grape, 1 yr.15	1.00	8.00
White Grape, 2 yr.20	1.25	10.00

Black Victoria. Vigorous grower; fruit enormous, fine flavor, best and largest black currant.

Fay's Prolific. One of the best. Berries large and uniform, fine quality; stems extra long, easily picked; very prolific.

Perfection Currant. Larger than the Fay, the berries holding their size to the end of the bunch, very prolific, bright red in color.

Red Cross. Very large; clusters long; berries red and of same size to the end of the stem. The sweetest currant and excellent for home or market.

White Grape. Yellowish white; sweet and mild.

Wilder. The strongest grower and one of the most productive. Bunches and berries very large; bright, attractive red color. We recommend this variety for any purpose.

Gooseberries

SHOULD be planted in good rich soil and fertilized every year. Regular pruning is essential for the production of good fruit. The red varieties are more susceptible to mildew than the green and should be grown in partial shade.

PRICES ON GOOSEBERIES

	Each	Per 10	Per 100
Downing, 1 yr.	\$0.15	\$1.00	\$ 8.00
Downing, 2 yr.20	1.35	11.00
Houghton, 1 yr.15	1.00	8.00
Houghton, 2 yr.20	1.35	11.00

Downing. Very vigorous; fruit large, and delicious flavor. Seldom mildews. The oval, whitish green; very valuable for best red variety for home or market.

Houghton. Very productive; fruit medium, round, smooth; pale red; tender, sweet and of excellent flavor and high grade fruit.

Josselyn Gooseberries. Large size, hardy



Grapes

GRAPE VINES do well trained up to the side of any building or along the garden. Grapes are very profitable for certain localities and they are so easily grown and bear at such an early age and the plants are so inexpensive that they should receive greater attention. We are in the center of one of the finest grape belts in the United States and are in a position to supply the finest plants. Any one contemplating planting grapes in large quantities will profit by communicating with us.

PRICES ON GRAPES

	Each	Per 10	Per 100
Agawam, 1 yr.	\$0.15	\$1.20	\$10.00
Agawam, 2 yr.20	1.50	13.00
Brighton, 1 yr.20	1.20	10.00
Brighton, 2 yr.25	1.70	15.00
Campbell's Early, 1 yr.25	2.00	18.00
Campbell's Early, 2 yr.30	2.50	20.00
Catawba, 1 yr.15	1.00	8.00
Catawba, 2 yr.20	1.30	11.00
Concord, 1 yr., \$40.00 per 1000.....	.12	.90	6.00
Concord, 2 yr., \$60.00 per 1000.....	.15	1.20	8.00
Diamond, White, 1 yr.15	1.00	8.00
Diamond, White, 2 yr.20	1.50	13.00
Moore's Early, 1 yr.15	1.10	9.00
Moore's Early, 2 yr.20	1.50	12.00
Niagara, 1 yr.15	1.00	8.00
Niagara, 2 yr.20	1.30	11.00
Worden, 1 yr.15	1.00	8.00
Worden, 2 yr.20	1.30	12.00

BLACK

Campbell's Early. Extremely early; bunch and berry large; seeds few and small; very juicy and sweet. Best early black grape.

Concord. Bunch and berry very large; color blue-black. Very hardy and productive. Probably best all-round grape grown.

Moore's Early. Two weeks earlier than Concord; bunch large; berry very large, black. Extremely hardy.

Worden. Earlier than Concord; berries larger and of better quality; very vigorous, hardy and productive. Good table grape.

RED

Agawam. Berries very large and sweet; pulp soft; thick skin; ripens early and a vigorous grower. One of the best all-round red varieties.

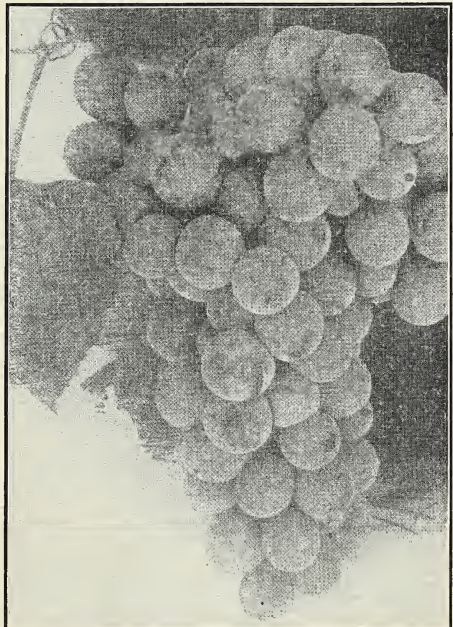
Brighton. Berries large, round, excellent flavor and quality. One of the earliest.

Catawba. Coppery-red, vinous and rich.

WHITE

Diamond. Ripens before Moore's Early; large, rich yellow-white, juicy berries; few seeds.

Niagara. The standard white grape for home and market. Pale yellow; flesh tender and sweet; skin thin but tough. An excellent shipper.



CONCORD



EUROPEAN SYCAMORE (Oriental Plane Tree)

ORNAMENTAL DEPARTMENT

A VERY small outlay of time and money, with a careful selection of Ornamental Trees and Shrubs, will add beauty and comfort to the home and increase its value many fold.

Please do not compare our trees and shrubs to the ill-shaped and cheap trees sometimes offered to the public for the purpose of getting rid of them. Each tree and shrub that we offer is carefully grown, dug and packed, and we solicit your patronage, knowing that you will be quick to appreciate high class, well-shaped ornamental stock.

We regret that space will permit us to give only very brief descriptions of Ornamentals, but we grow many other ornamentals than those listed herein. Should you desire any other variety of tree or shrub or any other sizes than those given, we can probably supply you with same and any inquiries will receive our careful and prompt personal attention.

Deciduous Ornamental Trees

Ailanthus (Tree of Heaven).

	Each	Per 10
8 to 10 feet.....	\$1.15	\$10.00
10 to 12 feet.....	1.50	12.50

Ash, American White (Fraxinus ameri-

cana). Rapid grower; broad, round head; smooth, gray bark; bluish-green foliage.

Magnificent Avenue tree.	Each	Per 10
6 to 8 feet.....	\$0.85	\$7.50
8 to 10 feet.....	1.00	9.00
10 to 12 feet.....	1.25	11.00



Deciduous Ornamental Trees—Continued

Catalpa, Western (*Catalpa speciosa*). A large rapid-growing tree, widely planted both as an ornamental tree and for timber. Large heart-shaped leaves and white flowers with yellow and purple spots.

	Each	Per 10
6 to 8 feet.....	\$0.60	\$5.00
8 to 10 feet.....	.80	7.00
10 to 12 feet.....	1.00	9.00

Catalpa bungei (Umbrella Tree). Leaves large, dark green, lying like shingles on a roof. Forms a dense umbrella-shaped head. Very unique and a valuable lawn tree.

	Each	Per 10
2 yrs., 4 to 6 feet....	\$1.50	\$12.50
2 yrs., 6 to 8 feet....	1.75	15.00
2 yrs., 8 to 10 feet....	2.00	17.50

Crab, Bechtel's Double Flowering. Medium-size, hardy tree which when in bloom appears to be covered with small roses of a delicate pink shade. Exceedingly fragrant.

	Each
3 to 4 feet.....	\$1.25

Elm, American (*Ulmus americana*). A large, stately tree with long and graceful branches. Leaves dark green, turning pale in autumn. Excellent for lawn and landscape. One of the grandest trees.

	Each	Per 10	Per 100
6 to 8 feet....	\$0.75	\$ 6.50	\$55.00
8 to 10 feet....	.90	8.00	70.00
10 to 12 feet....	1.50	13.50	112.50

We have American Elm in all sizes up to 5 inches in diameter. Write for prices.

Horse Chestnut, White (*Aesculus hippocastanum*). Large, handsome tree; dark green leaves; magnificent spikes of white flowers which appear in May. One of the best lawn trees.

	Each	Per 10
6 to 8 feet.....	\$1.75	\$15.00
8 to 10 feet.....	2.25	20.00

We have Horse Chestnut in all sizes up to 5 inches in diameter.

Magnolia acuminata (Cucumber Tree). A fine pyramidal tree with upright branches. Leaves oblong, bright green, turning yellow in autumn. A valuable shade tree.

	Each	Per 10
6 to 8 feet.....	\$1.50	\$12.50



NORWAY MAPLE

Flowering Peach, Double. Red and white. Can be trimmed in either tree or shrub form. They are handsome and in early spring make a striking contrast with other trees.

	Each	Per 10
3 to 4 feet.....	\$0.75	\$6.50
4 to 5 feet.....	.90	8.00

Maple, Norway (*Acer platanoides*). Handsome tree with wide spreading branches, and a compact, round head. Leaves smooth, bright green. A splendid lawn tree. We cannot recommend this tree too highly. We have made this tree a specialty and nurserymen and planters all over the United States know and buy our Norway Maples. We can furnish any size up to 4 inches in diameter.

	Each	Per 10
1½ inches diameter....	\$2.25	\$20.00
1¾ inches diameter....	2.50	22.50
2 inches diameter....	3.25	30.00
2½ inches diameter....	4.50	
3 inches diameter....	5.50	
3½ inches diameter ...	7.00	

Maple, Silver (*Acer dasycarpum*). A large tree with wide spreading and drooping branches. Leaves bright green above, silvery white beneath, turning pale in



Deciduous Ornamental Trees—Continued

autumn. It is a very rapid growing tree and desirable where immediate shade is desired.

	Each	Per 10
6 to 8 feet.....	\$0.75	\$ 6.50
8 to 10 feet.....	.90	8.00
10 to 12 feet.....	1.25	10.00
1¾ inches diameter...	2.00	17.50
2 inches diameter...	2.50	22.50

We will be pleased to quote on larger sizes.

Maple, Schwedleri. A beautiful variety of the Norway Maple with leaves of bright crimson color, changing to purplish green late in the autumn. One of the most valuable trees for contrast in foliage.

	Each	Per 10
8 to 10 feet.....	\$3.00	\$27.50

Prunus Pissardi (Purple-leaf Plum) . Handsome adornment for the lawn. This little tree has deep purple leaves which

retain their color until fall. In spring, it is covered with fine white flowers followed by wine-red fruit.

	Each
3 to 4 feet.....	\$0.75

Sycamore, European (Oriental Plane). Erect growing, wide spreading tree; bright green, heart-shaped leaves; beautiful mottled trunk. This tree is extensively used for park and street planting as well as for shade for the lawn. It is a healthy, fast growing tree; we consider it the best all-round fast growing tree for this part of the country.

	Each	Per 10
6 to 8 feet.....	\$0.75	\$7.00
8 to 10 feet.....	1.00	9.00
10 to 12 feet.....	1.35	12.50

Larger sizes, \$2.50 to \$6.00.

We shall be glad to quote on larger sizes or in greater quantities than those listed herein.



CUT-LEAF WEEPING BIRCH

Weeping Trees

Birch, Cut-leaf Weeping. Probably the most popular of all weeping trees. Vigorous grower; graceful, drooping branches; silvery white bark and delicate cut foliage. Desirable for street or lawn.

	Each	Per 10
10 to 12 feet.....	\$3.00	\$27.50
2 to 2½ in. diameter..	4.00	

Maple, Wier's Cut-Leaved. A variety of Silver Maple with finely cut foliage. Its growth is rapid; branches slender and drooping and as graceful as the Cut-Leaf Weeping Birch.

	Each	Per 10
6 to 8 feet.....	\$1.25	\$11.00
8 to 10 feet, 1½ in. dia.	1.50	12.50
10 to 12 feet, 1¾ in. dia.	2.00	17.50
2 in. dia.	2.75	

Mulberry, Tea's Weeping. One of the prettiest of all Weeping Trees. Grafted on stems about six feet from the ground and forms an umbrella-shaped head with long, slender branches, drooping to the ground.

	Each
1 yr.	\$2.00
2 yr.	2.50
3 yr.	3.50

Willow, Wisconsin Weeping. Probably the hardiest and best of the larger growing Willows. Very attractive.

	Each	Per 10
6 to 8 feet.....	\$0.60	\$5.00
8 to 10 feet.....	.80	7.00



Hardy Ornamental Shrubs

THE PLANTING of Shrubs adds greatly to the beauty and value of the home. In the following list of Shrubs, you will find sorts that will bloom from early spring until late summer and some of the sorts will follow with ornamental berries until late in the winter.

Shrubs are most ornamental when they are planted in masses, against buildings, fences or property lines, or as border plantations along walks or drives, although some are exceedingly beautiful when planted as single specimens.

We have described only the very best shrubs, but we are in a position to supply anything in this line you may desire to plant.

Althea (Rose of Sharon). Hardy Shrubs with handsome, large flowers which appear in September at a time when few other shrubs are in bloom. Will grow to 10 feet high if not pruned back.

	Each	Per 10
2 to 3 feet.....	\$0.60	\$5.00
3 to 4 feet.....	.75	6.50
4 to 5 feet.....	.85	7.50
5 to 6 feet.....	1.25	11.00

Berberis thunbergi. See page 28, under Hedge Plants, for description and prices.

Buddleia (Butterfly Bush). One of the most admired shrubs in our nurseries. Beautiful lilac-colored flowers are borne on spikes frequently ten inches long.

	Each	Per 10
2 to 3 years.....	\$0.40	\$3.50

Calycanthus floridus (sweet-scented Shrub). A very desirable shrub, extensively cultivated for its large, brown, fragrant flowers which appear in early summer. Rather a dwarf growing shrub.

	Each	Per 10
1½ to 2 feet.....	\$0.40	\$3.50
2 to 3 feet.....	.50	4.00

Clethra alnifolia (Sweet Pepper Bush). This small shrub is valuable for the front of a border. In late summer it is covered with white flowers which are very fragrant.

	Each	Per 10
18 to 24 inches.....	\$0.50	\$4.00
2 to 3 feet.....	.60	5.00

Chionanthus Virginica (White Fringe). Large, hardy shrub with smooth, dark green leaves. Produces graceful panicles of white, fringe-like flowers.

	Each	Per 10
2 to 3 feet.....	\$0.90	\$8.00

Cornus sibirica (Siberian Red Osier). An upright shrub with upright, bright, blood-red branches. Flowers creamy white, in numerous small flat-topped clusters, followed by light blue berries. Grows from 6 to 10 feet high.

	Each	Per 10
2 to 3 feet.....	\$0.50	\$4.00
3 to 4 feet.....	.60	5.00
4 to 5 feet.....	.75	

Cornus stolonifera (Red Osier Dogwood). This medium-size shrub has smooth, slender, spreading branches which are dark red in winter. Flowers white followed by white berries.

	Each	Per 10
2 to 3 feet.....	\$0.50	\$4.00
3 to 4 feet.....	.65	5.00

Cornus elegantissima Variegata. Similar to the preceding, with silver and green variegated foliage.

	Each	Per 10
2 to 3 feet.....	\$0.75	\$6.00
3 to 4 feet.....	.80	7.00

Cydonia Japonica (Japan Quince of Fire Bush). Ornamental, spiny shrub with glossy foliage of reddish tinge. In early spring, deep scarlet flowers are borne in great profusion. Bears pruning well and is desirable for hedges or training against walls or fences.

	Each	Per 10
2 to 3 feet.....	\$0.75	\$6.50
3 to 4 feet.....	1.00	9.00

Deutzia gracilis (Slender Deutzia). Small, usually about 2 feet high. Leaves bright green; white flowers in graceful nodding racemes appear in June.

	Each	Per 10
15 to 18 inches.....	\$0.60	\$5.00
18 to 24 inches.....	.75	6.50



Hardy Ornamental Shrubs—Continued

Deutzia Lemoinei. Similar to *Deutzia gracilis*, but more vigorous and showier flowers. Grows to a height of about three feet.

	Each	Per 10
15 to 18 inches.....	\$0.50	\$4.00
18 to 24 inches.....	.60	5.00
2 to 3 feet.....	.75	6.50

Deutzia, Pride of Rochester. A vigorous grower with very large, double white flowers. A very valuable variety.

	Each	Per 10
2 to 3 feet.....	\$0.50	\$4.00
3 to 4 feet.....	.60	5.00
4 to 5 feet.....	.75	

Euonymus europaeus (Strawberry Tree). Small tree at its best in autumn when the leaves are brilliant scarlet. It bears rose colored berries which hang in clusters till midwinter.

	Each	Per 10
3 to 4 feet.....	\$0.75	
4 to 5 feet.....	1.00	

Exochorda grandiflora (Pearl Bush). A large shrub, growing to 8 or 10 feet. Leaves bright green; flowers dazzling white, produced in numerous terminal racemes.

	Each	Per 10
2 to 3 feet.....	\$0.75	
3 to 4 feet.....	1.00	

Forsythia intermedia. An erect growing shrub with arching branches; bright yellow flowers which appear in May.

	Each	Per 10
2 to 3 feet.....	\$0.50	\$4.00
3 to 4 feet.....	.60	5.00
4 to 5 feet specimens...	.75	

Forsythia suspensa (Drooping Golden Bell). A graceful shrub with long and slender drooping branches. The leaves, which stay on the plant until frost, are dark green. Flowers golden yellow. Grows to 8 feet. Very showy.

	Each	Per 10
2 to 3 feet.....	\$0.50	\$4.00
3 to 4 feet.....	.60	5.00
4 to 5 feet specimens...	.75	



HYDRANGEA
PANICULATA GRANDIFLORA

Hydrangea arborescens grandiflora alba. Very large, snowball-like flowers which appear in July, ahead of the other Hydrangeas. This plant is perfectly hardy, new and should be extensively cultivated.

	Each	Per 10
18 to 24 inches.....	\$0.75	\$6.50
2 to 3 feet.....	.85	7.50

Hydrangea paniculata grandiflora. The most popular Hydrangea and one of the showiest shrubs in cultivation. Too well known to require further description.

	Each	Per 10
18 to 24 inches.....	\$0.60	\$5.00
2 to 3 feet.....	.75	6.50
3 to 4 feet, tree form.	1.25	10.00

Kerria Japonica. These shrubs attract because of their light green stems and branches and deeply wrinkled, bright green leaves. In June and at intervals during the summer they are covered with yellow flowers.

	Each	Per 10
18 to 24 inches		\$1.25

Kerria Japonica Variegata. Similar to the above in branch and bloom, but is of dwarf growth and has beautiful silver and green variegated foliage. Valuable for shrub borders.

	Each	Per 10
18 to 24 inches		\$1.25



Hardy Ornamental Shrubs—Continued

Lilacs. We can supply these beautiful shrubs in both bush and tree form. We have single and double white, single and double purple, blue and violet purple. In ordering, please state color desired.

	Each	Per 10
2 to 3 feet.....	\$0.75	\$6.50
3 to 4 feet.....	.85	8.00
4 to 5 feet.....	1.25	

Lilacs, Persian. Dwarf growing species of Lilacs with slender, arching branches and fine fragrant trusses of purple flowers.

	Each	Per 10
2 to 3 feet.....	\$0.70	\$6.50

Lonicera (Bush Honeysuckle). Pretty soft-leaved shrubs with delicate fragrant flowers followed in the fall by colored berries. The flowers are of characteristic Honeysuckle odor and one flower is often sufficient to scent a whole room. There are many varieties of this valuable shrub. Below we are naming only the best.

Lonicera bella albida. Flowers white, followed by long strings of red berries which remain all summer.

	Each	Per 10
2 to 3 feet.....	\$0.50	\$4.00
3 to 4 feet.....	.60	5.00
4 to 5 feet.....	.75	

Lonicera Morrowi (Japanese Bush Honeysuckle). Branches spreading. Downy purple leaves, white, fragrant flowers turning to yellow. 4 to 6 feet high.

	Each	Per 10
2 to 3 feet.....	\$0.50	\$4.00
3 to 4 feet.....	.60	5.00

Lonicera Tartarica alba (Tartarian Honeysuckle). Tall growing shrubs attaining a height of 8 to 10 feet. Bears great quantities of white flowers followed by red and orange berries. Very ornamental.

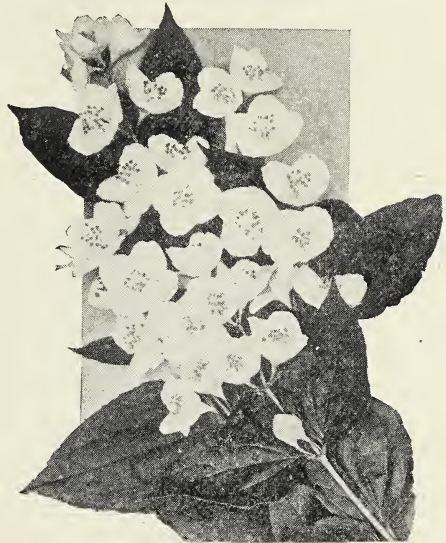
	Each	Per 10
2 to 3 feet.....	\$0.50	\$4.00
3 to 4 feet.....	.60	5.00

Lonicera Tartarica rubra. Similar to the above, but bears deep pink flowers.

	Each	Per 10
2 to 3 feet.....	\$0.50	\$4.00
3 to 4 feet.....	.60	5.00

Mahonia aquifolia (Holly-leaved Mahonia). Medium-sized shrub; handsome glossy green foliage which is evergreen. Bright yellow flowers are borne in May, followed by bluish berries. Very ornamental. Baled in burlap.

	Each	Per 10
18 to 24 inches.....	\$1.25	\$10.00
2 to 3 feet.....	1.75	15.00



PHILADELPHUS (Mock Orange)

Philadelphus aureus (Golden Syringa). Dwarf, compact growing shrub; valuable for contrasting in groups. Probably the best golden-leaved shrub in cultivation.

	Each	Per 10
15 to 18 inches.....	\$0.70	\$6.50
18 to 24 inches.....	.90	8.00

Philadelphus coronarius (Garland Syringa). Upright growth, arching branches, attaining a height of 8 to 10 feet. Flowers creamy white, very fragrant, borne in great profusion. Very desirable for background or screen.

	Each	Per 10
2 to 3 feet.....	\$0.40	\$3.50
3 to 4 feet.....	.60	5.00

Philadelphus grandiflorus. Similar to the above excepting the flowers are somewhat larger. Sometimes called Large Flowered Mock Orange. Very fragrant, appear in June.

	Each	Per 10
2 to 3 feet.....	\$0.40	\$3.50
3 to 4 feet.....	.60	5.00
4 to 5 feet.....	.75	

Rhodotyptus Kerrioides (White Kerria). Beautiful golden-green, corrugated foliage shrub, with white flowers resembling those of a small rose. These flowers appear in early June and are followed by large black berries which are very showy.

	Each	Per 10
2 to 3 feet.....	\$0.60	
3 to 4 feet.....	.70	



Hardy Ornamental Shrubs—Continued

Rhus Cotinus (Purple Fringe or Smoke Bush). In June this shrub bears large masses of purplish flowers giving the appearance of smoke, hence its name. In Fall the leaves change to varying shades. Very unique.

	Each	Per 10
4 to 5 feet.....	\$0.90	\$8.00
3 to 4 feet.....	.75	7.00

Sambucus Aurea (Golden Elder). Thrifty shrubs that will do well in any locality when planted where it can receive sunlight. The foliage is beautiful bright golden-yellow and very striking when planted in masses. Naturally grows tall, but can be pinched back to a compact little bush.

	Each	Per 10
2 to 3 feet.....	\$0.60	\$5.00
3 to 4 feet.....	.75	6.50
4 to 5 feet.....	1.00	

Spiraea Anthony Waterer. A dwarf variety, excellent for foundation planting. Has bright, rosy, crimson flowers, bloom until fall. Gives a fine effect for a low growing shrub.

	Each	Per 10
15 to 18 inches.....	\$0.60	\$5.00
18 to 24 inches.....	.75	6.50

Spiraea billardi. Hardy, upright shrub, 4 to 5 feet high. Flowers bright pink, produced in long panicles in June. Very showy and attractive.

	Each	Per 10
2 to 3 feet.....	\$0.50	\$4.00
3 to 4 feet.....	.60	5.00

Spiraea Douglasi. Rose colored flowers are borne on this shrub in dense terminal panicles. Leaves are covered with white down beneath, giving the shrub a beautiful gray appearance.

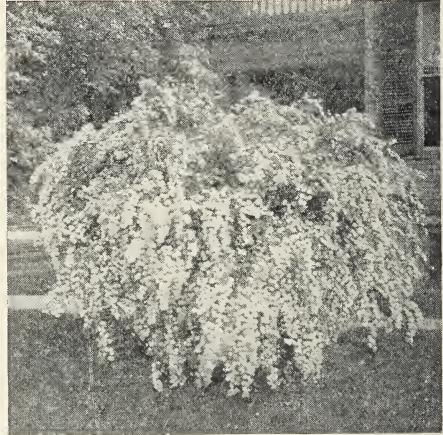
	Each	Per 10
2 to 3 feet.....	\$0.50	\$4.00
3 to 4 feet.....	.60	5.00

Spiraea Prunifolia fl. pl. The original Bridal Wreath. Small, round, shiny leaves that take on beautiful colors in Autumn. Small white flowers cover the shrub in May.

	Each	Per 10
2 to 3 feet.....	\$0.70	\$6.00
3 to 4 feet.....	.80	7.00

Spiraea Thunbergi. Low, bushy shrub with delicate green, feathery foliage which takes and retains lovely tints in Autumn. Small white flowers appear in abundance in May. Hardy anywhere.

	Each	Per 10
18 to 24 inches.....	\$0.65	\$6.00
2 to 3 feet.....	.75	6.50



SPIREA VAN HOUTTE

Spiraea Van Houttei (Bridal Wreath). A grand and graceful shrub with numerous arching branches. Leaves small, dark green; flowers white, borne in clusters, completely covering the shrub in early summer. One of the most beautiful and popular shrubs in cultivation. Recommended for specimens for the lawn or for flowering hedges. As this shrub is generally in bloom on Decoration Day, it is the handsomest shrub for cemetery planting and especially recommended for this purpose.

	Each	Per 10
18 to 24 inches.....	\$0.30	\$2.50
2 to 3 feet.....	.35	3.00
3 to 4 feet.....	.50	4.00
4 to 5 feet, specimens....	.75	

Symphoricarpus vulgaris (Coral Berry or Indian Currant). Dwarf shrub of graceful habit; clusters of small purple fruit which hang on the plant throughout the winter.

	Each	Per 10
18 to 24 inches.....	\$0.30	\$2.50
2 to 3 feet.....	.35	3.00
3 to 4 feet.....	.45	4.00

Symphoricarpus racemosus (Snowberry). An old, well known shrub with small pink flowers followed with clusters of waxy white berries which hang on the plant through the greater part of the winter.

	Each	Per 10
2 to 3 feet.....	\$0.50	\$4.00
3 to 4 feet.....	.60	5.00



Hardy Ornamental Shrubs—Continued

Tamarix africana. These large shrubs have foliage resembling Asparagus leaves, which has a drooping feathery appearance. Pink flowers in great profusion are borne in early Summer giving a very charming effect.

	Each	Per 10
18 to 24 inches.....	\$0.40	\$3.50
2 to 3 feet.....	.50	4.00
3 to 4 feet.....	.60	5.00

Viburnum opulus (High Bush Cranberry). This shrub has broad and elegant foliage and creamy white flowers which are followed by large clusters of crimson berries which persist on bare branches far into the winter. Very beautiful.

	Each	Per 10
18 to 24 inches.....	\$0.40	\$3.50
2 to 3 feet.....	.60	5.00

Viburnum opulus sterilis (Snowball). A grand, old-time shrub with handsome, white flowers in large globular clusters appearing in May.

	Each	Per 10
2 to 3 feet.....	\$0.70	\$6.00
3 to 4 feet.....	.80	7.00

Viburnum plicatum (Japanese Snowball). A handsome shrub with showy

white flowers borne in globular clusters and exceedingly beautiful foliage.

	Each	Per 10
2 to 3 feet.....	\$1.00	\$9.00

Weigelia candida. A hardy, free flowering shrub of spreading habit growing to 5 feet high. Very large, pure white flowers, borne in profusion in June. Best white Weigelia.

	Each	Per 10
2 to 3 feet.....	\$0.60	\$5.00
3 to 4 feet.....	.75	6.50

Weigelia Eva Rathke. Growth similar to the above. Flowers deep carmine-red. Best red Weigelia.

	Each	Per 10
18 to 24 inches.....	\$0.70	\$6.50
2 to 3 feet.....	.90	8.00

Weigelia rosea. Very hardy, compact growing sort. Rose colored flowers in great profusion.

	Each	Per 10
2 to 3 feet.....	\$0.60	\$5.00
3 to 4 feet.....	.75	7.00

Weigelia rosea variegata. One of the very best variegated leaved shrubs. Leaves bordered creamy white; flowers light pink; shrub dense and compact.

	Each	Per 10
2 to 3 feet.....	\$0.60	\$5.00
3 to 4 feet.....	.75	6.50

Planting Suggestions

IN ORDER that you may better understand the various purposes for which different varieties of Ornamental Trees are best used, we have classified the most desirable varieties as follows:

For Streets, Roads and Wide Avenues: American Elm, European Sycamore, Silver Maple and Norway Maple.

Large Trees Desirable for The Lawn: Cut-leaf Weeping Birch, Horse Chestnut, Schwedler's Maple, Norway Maple, Wier's Maple, Weeping Willows.

Small and Medium Ornamental Trees for the Lawn: Catalpa bungei, Bechtel's

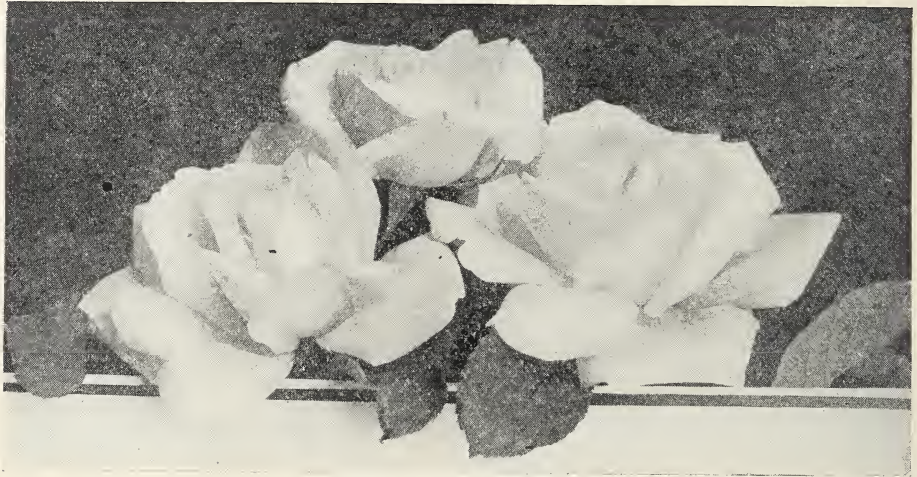
Flowering Crab, Magnolia soulangeana, Prunus pissardi, Tea's Weeping Mulberry.

Fastest Growing Trees: Oriental Plane (European Sycamore), Silver Maple, Wier's Cut-leaf Maple, Western Catalpa.

Evergreens Best Adapted to Windbreaks and Screens: American Arborvitae, Pyramidal Arborvitae, Norway Spruce.

GUIDE FOR ORNAMENTALS—PLANTING GUIDE

The information in this Price-Catalog will answer any ordinary needs in selecting Ornamentals; however, sometimes we have inquiries from large planters who desire more complete information than we are able to get in this book. To these planters and any one else, we are offering a Guide on planting and selecting varieties of Trees, Shrubs, Vines and Perennial plants. This is a 36-page book crammed full of boiled down information on what to select and what varieties to select for any purpose. It tells you the trees adapted to city planting; trees for winter beauty; weeping trees; most popular trees; trees with autumn colored foliage, for formal effect, etc. It tells you the shrubs that bloom for eight weeks or more; for cut flowers; shrubs attractive in fruit; with variegated foliage; with colored bark; shrubs that resist drought; for cold climates; for sunny and shady situations; for screens and hedges and classifies as to color, blooming season and height all shrubs, perennials, etc. There are many pages of useful information in this book and we offer it to you at less than cost to us. Send us 10 cents in stamps or currency and we will forward your copy at once.



FRAU KARL DRUSCHKI

Roses

ROSSES should be planted where they will receive sunlight for at least half the day. In planting, avoid trees and the shady sides of buildings. Well-rotted stable manure or bone meal should be spaded into the soil on which they are to be planted. Our Roses should be pruned back to six inches as soon as they are planted.

We grow only the hardy varieties as we have found that they are the most satisfactory for the North Central States. Please do not compare our strong, field-grown plants with the small inferior cutting plants generally sent out by mail order houses. Our Roses, with the exception of one or two varieties of Climbers, are all budded on hardy root stalks imported from France. The roots all have grown in our nursery rows for two years and the tops for one year. No thriftier or hardier Roses can be grown.

PRICES ON ROSES

	Each	Per 10
Bush Roses	\$0.75	\$6.50
Yellow Sorts90	8.00
Ramblers and Climbers60	5.00

BUSH ROSES

Anna de Diesbach. Brilliant crimson; large, finely formed flowers.

Baby Rambler. Shapely, compact, bushy plant about 18 inches high, producing very double crimson flowers in great profusion from Spring until frost. Desirable for bedding or hedge.

Baron de Bonstetten. Beautiful dark red, changing to velvety-maroon. One of the best dark roses.

Crested (Moss Rose). Deep pink buds surrounded with a mossy fringe and crest; fragrant.

Eugene Furst. Velvety-crimson shaded crimson-maroon. One of the most beautiful.

Frau Karl Druschki. Pure white, large flowers, perfect in form. The handsomest white rose in cultivation.



Roses—Continued

BUSH ROSES—Continued

Gen. Jacqueminot. Large, velvety flowers of intense maroon-scarlet. Most popular rose grown.

Gruss an Teplitz. Blooms constantly during entire growing season. Reddest of all Red Roses. Exceedingly beautiful.

Killarney. Bright pink. Buds are long and of exquisite form and fragrance.

White Killarney. Same as Killarney in all respects except color. Pure white.

Magna Charta. Bright pink, suffused with carmine; very large, full and fragrant with magnificent foliage. A free and luxuriant bloomer.

Marshall P. Wilder. Large, perfect, dark red flowers. One of the best.

Mrs. J. H. Laing. Satiny, soft clear pink. Best light pink rose.

Paul Neyron. Immense bright crimson-pink flowers. Blooms continuously. Largest rose known.

Soliel d'Or. Dwarf, slow growing variety, hardy and very desirable yellow variety. Yellow shaded with orange or reddish gold, very double and exquisitely perfumed.

Tom Wood. Brilliant cherry red; large and very double, perpetual in bloom. Plant almost free from thorns. One of the most satisfactory red roses.

Ulrich Brunner. Brilliant cherry-red, immense flowers; handsome foliage. Superior to American Beauty as a garden rose as it is hardy, while American Beauty is not.



EUGENE FURST

CLIMBERS AND RAMBLERS

Baltimore Belle. Pale blush, nearly white, very double; blossoms in clusters.

Climbing American Beauty. Glowing crimson-red. Beautiful glossy, green foliage which retains its brightness during the entire season.

Crimson Rambler. Flowers rich crimson, borne in clusters. One of the fastest growing climbers. Handsome foliage. One of the best Climbing Roses.

Dorothy Perkins. Flowers clear shell pink, borne profusely in numerous clusters. Foliage lustrous, bright green. A grand rose.

Excelsa (Red Dorothy Perkins). Similar to Dorothy Perkins except color, which is an intense crimson-maroon.

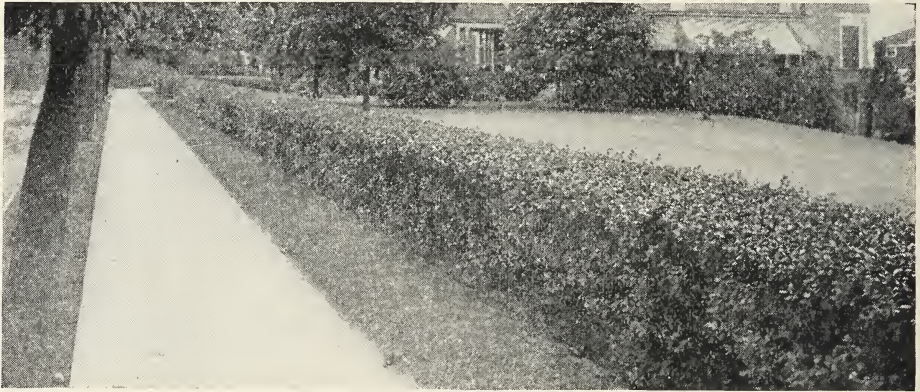
Flower of Fairfield. Everblooming crimson Rambler. This new climber is not only effective for covering walls or trellises, but attractive for table decorations.

White Dorothy Perkins. Similar in growth to Dorothy Perkins, except that it bears white flowers in profusion.



Hedge Plants

NOTHING is more beautiful than a well-grown, neatly trimmed hedge. They are rapidly replacing fences and are very effective for protection and separation, besides being a delight to the eye. In starting a hedge, the plants should be set in two rows, a foot between the rows, and the plants set alternate, a foot apart in the row. Pruning should commence as soon as the limbs get large enough to form the required size of the hedge. Frequent pruning will cause the hedge to thicken up.



PRIVET HEDGE

California Privet. Most popular and one of the very best Hedge Plants. Stands close trimming exceedingly well. Leaves, oval, dark green and glossy. Make a very desirable hedge.

	Per 10	Per 100
12 to 18 inches	\$0.70	\$5.00
18 to 24 inches.....	1.00	8.00
2 to 3 feet.....	1.20	10.00

Berberis thunbergi (Thunberg's Barberry). A graceful shrub of low, dense

habit. Leaves small, bright green, which in fall change to dazzling tones of orange, scarlet and crimson. Large, bright red berries appear in the fall and brighten the stems far into the winter. One of the most beautiful shrubs in cultivation. Makes one of the best hedges.

	Each	Per 10	Per 100
12 to 15 in., 2 yr. No. 1 plants.	\$0.30	\$2.50	\$20.00
15 to 18 in., 2 yr.	.35	3.00	25.00
18 to 24 in., 2 yr.	.40	3.50	

HOW TO BEST protect our young trees from being girdled by the mice and rabbits during the winter is a question that comes to us at least twice a year—in the fall as we are looking for some protection, and again in the spring, as we find that many of our trees have been ruined by the mice and rabbits during the winter.

We are using with great success, a tree protector which is made of wood, cut like veneer 23 in. long, 8 in. wide and 28 to the inch in thickness. Wind them around the tree and shove them down close to the ground, tie a string around to hold them, and they make a perfect protection.

We can furnish them at \$1.50 per hundred or \$10.00 per thousand. The demand for these protectors is increasing very rapidly and all who have tried them are well pleased with the perfect protection they afford against mice and rabbits.



Evergreen Trees

EVERGREENS are excellent for specimens on the lawn, also for massing, shelters, hedges, etc. Our Evergreens have all been carefully grown, at distances which have allowed symmetrical growth. We ship them from September 1 to October 1, and from April 15 to May 15, which are the best seasons for digging and transplanting them. Some varieties stand transplanting better if dug with a ball of earth about the roots.

All our Evergreens have been transplanted. We ship them to you with a neat, compact ball of earth. This insures you against loss in transplanting. Prices include balling and burlaping.

Arborvitae, American (*Thuja occidentalis*). Pyramidal shape; soft green foliage in spring and summer which changes to brown or bronze in winter. Rapid grower and fine for massing or hedges.

	Each
2 to 3 feet.....	\$1.50
3 to 4 feet.....	2.50
4 to 5 feet.....	4.00
5 to 6 feet.....	5.00

Arborvitae, Pyramidal (*Thuja occidentalis pyramidalis*). Similar to American Arborvitae, but is much more compact in growth. Very beautiful.

	Each
2 to 3 feet.....	\$2.50
3 to 4 feet.....	3.50

Juniper, Irish (*Juniperus communis hibernica*). A slender, columnar tree; foliage deep green, very compact. Fine for formal planting.

	Each
18 to 24 inches.....	\$1.25
2 to 3 feet.....	1.50

Retinospora plumosa (Plume-like Japan Cypress). A rapid growing tree with fine, feather or plume-like foliage of a beautiful, soft green; may be rendered very dense by pruning. The most popular Retinospora.

	Each
2 to 3 feet.....	\$3.00
3 to 4 feet.....	4.00

Retinospora plumosa aurea (Golden Japan Cypress). A variety of the above especially attractive in the early summer when the young growth has the brightest golden hue.

	Each
2 to 3 feet.....	\$3.00
3 to 4 feet.....	4.00

'Spruce, Koster's Colorado Blue (*Picea pungens glauca Kosteriana*). A selected type of the Colorado Blue Spruce. Very beautiful bluish-green foliage; very vigorous and sturdy. One of the most valuable and distinct of all Evergreens.

	Each
3 to 4 feet.....	\$10.00
4 to 5 feet.....	15.00
5 to 6 feet.....	20.00
6 to 7 feet.....	25.00

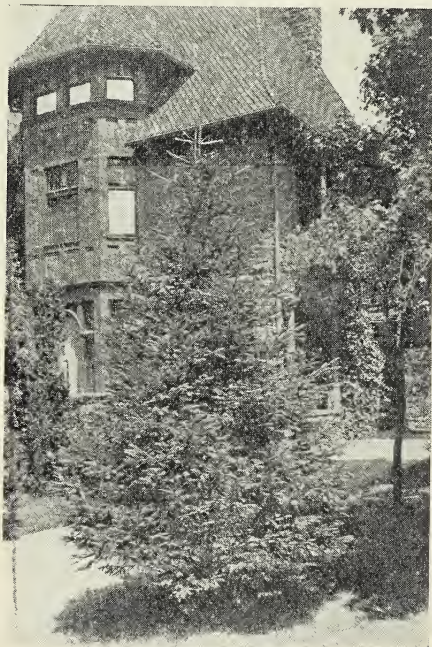
Hemlock Spruce (*Tsuga Canadensis*). A very graceful tree with loose open growth and Yew-like foliage. It can be pruned and kept in dense form. Does best in a

moist soil. Beautiful when used for hedging or as single specimens.

2 to 3 feet.....	\$3.00
3 to 4 feet.....	3.50
4 to 5 feet.....	5.50
5 to 6 feet.....	7.00

Spruce, Norway (*Picea excelsa*). A tall and grand tree of rapid growth. Most widely cultivated of the Spruces. Stands shearing very well, making a valuable evergreen hedge. It is widely used for windbreaks and makes a good Evergreen Tree for the lawn. We have an excellent stock of Norway Spruce in all sizes and will be pleased to quote in quantities.

18 to 24 inches.....	\$0.85
2 to 3 feet.....	1.25
3 to 4 feet.....	2.00
4 to 5 feet.....	3.00
5 to 6 feet.....	4.00
6 to 7 feet.....	5.00



NORWAY SPRUCE



Hardy Climbing Vines

VINES are as necessary to the comfort and beauty of the home as trees and shrubs. They tone down the bold stiff angles of new buildings, furnish shade and flowers over porches and trellises.



CLEMATIS PANICULATA

Clematis Jackmanni. Very large, intense violet flowers. The most popular large-flowered clematis. Two years, each, \$1.00.

Clematis Mad. Edward Andre. Medium-size, beautiful crimson-red. Two years, each \$1.00.

Clematis Paniculata. Medium-size, pure white, fragrant flowers which bloom in immense sheets in September. Three years, each 50c.

Except as noted, all vines, strong 2 yr. field grown.

Ampelopsis quinquefolia (Virginia Creeper). Of vigorous growth with shiny 3-5 lobed leaves which turn to bright scarlet shades in Autumn. Most beautiful of native climbers. Two years, each, 40c; per 10, \$3.50.

Ampelopsis Veitchii (Boston Ivy). Leaves deep green in summer, changing to glorious crimson and yellow in autumn. Clings to the smoothest surfaces. One of the best climbers grown. Two years, each, 30c; per 10, \$3.00.

Bignonia radicans (Trumpet Flower). A strong, woody vine with large compound leaves and large orange scarlet trumpet-shaped flowers, borne in clusters. Two years, each, 60c; per 10, \$5.00.

Lonicera halleana (Hall's Japan Honeysuckle). Flowers white, changing to yellow, very fragrant. One of the best for trellises and ground cover. Three years, each 40c; per 10, \$3.50.

Lonicera Sempervirens (Scarlet Trumpet Honeysuckle). Flowers scarlet, trumpet-shape, 2 inches long; very showy. Splendid for porches. Two years, each 50c.

Wistaria Sinensis. Handsome foliage and pale lavender flowers borne in dense drooping clusters, nearly one foot long, opening in Spring. Two years, each, 75c.



Herbaceous and Perennial Plants

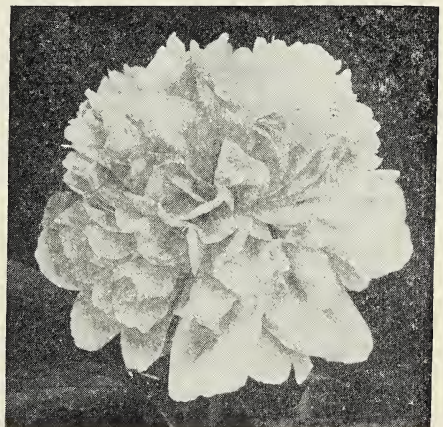
IN THE past one hundred and fifty years, thousands of new varieties of ornamental shrubs and plants have been introduced and many of them have been discarded, but through all these changes, the old-fashioned hardy perennial plants have withstood the test of time and emerged covered with all the more glory.

Below we are offering a few of the best old-fashioned perennial plants. They are all large clumps and will bloom the same year they are planted. The tops die down every winter, only to start into growth the next spring larger and stronger plants.

	Each	Per Doz.
Aquilegia,	\$0.20	\$2.00
Campanulas,20	2.00
Coreopsis, Grandiflora,20	2.00
Cannas,20	1.75
Delphinium,15	1.50
Dicentra,35	3.75
Digitalis,20	2.00
Eulalia,25	2.00
Hemerocalis,20	2.00
Hibiscus,20	2.00
Hollyhocks,15	1.50
Iris, German,15	1.25
Iris, Japan,25	2.00
Phlox,25	2.00
Shasta Daisy,20	2.00
Sedum Spectabilis,20	1.50
Tritoma Pfitzeriana,30	2.50
Peonies, 2 and 3 yr. Clumps, White, Pink and Red.....	.75	

If you wish any particular variety of Peonies, write to us. We have some very choice varieties, and we feel sure they will please.

Peonies. Peonies will succeed in any good garden soil or in pots. They are absolutely hardy, not bothered by insects or plant diseases. The foliage is very attractive and the large flowers are magnificent. In planting, the buds should not be covered more than an inch or so. We have a large assortment of the best varieties—deep red, deep rose, rich crimson rose, dark purplish red, pink, cream center, flesh white and pure white. Some varieties bloom early in the Spring and others during the Summer. In ordering, please state whether you wish Spring or Summer blooming kinds and color. We will please you with our selection.



PEONY



Useful Information

AGES AT WHICH APPLE TREES COMMENCE TO BEAR

3 TO 5 YEARS

Belmont, Delicious, Duchess, Grimes' Golden, Jonathan, Maiden Blush, McIntosh, Red Astrachan, Rome Beauty, Tolman Sweet, Wagener, Wealthy, Western Beauty, Winter Banana, York Imperial.

5 TO 8 YEARS

Bailey Sweet, Baldwin, Ben Davis, Fameuse, Golden Russet, Golden Sweet, Gravenstein, Hubbardson, King, Lowell, Munson Sweet, Northern Spy, R. I. Greening, Roxbury Russet, Stayman's Winesap, Sweet Bough.

SHRUBS FOR SHADY PLACES

Azaleas	Deutzias	Mahonia aquifolia
Barberry	Forsythia	Privet
Calycanthus	Golden Elder	Weigelias
Cornus	Indian Currants	Snowberries

SHRUBS THAT HAVE ATTRACTIVE BERRIES

Barberry	Honeysuckles, Bush	Rhodotypus
Cydonia Japonica	Indian Currant	Snowberries
Dogwood (Cornus)	Mahonia	Viburnums
Golden Elder		

ORDER IN WHICH BEST SHRUBS FLOWER

MAY

Barberry
Deutzia crenata
Exochordia
Forsythias
Honeysuckles, Bush
Japan Quince
Lilacs, Persian
Mahonia
Philadelphus (in variety)
Spirea Thunbergi
Spirea Van Houttei
Tamarix
Viburnum opulus

JUNE

Calycanthus
Cornus (Dogwood)
Deutzias (in variety)
Euonymus
Golden Elder
Kerria Japonica
Lilacs
Purple Fringe
Snowball
Spirea Anthony Waterer
(All season)
Weigelias

JULY

Hydrangea arborescens
Indian Currant
Snowberries
Spirea Douglasi

AUGUST and SEPTEMBER

Altheas
Buddleia
Clethra
Hydrangea paniculata
Spirea Callosa alba
Weigelia Eva Rathke

HARDY SHRUBS ARRANGED AS TO HEIGHT

TALL

Altheas
Cornus (Dogwood)
Euonymus
Exochordia
Lilacs
Honeysuckles, Bush
Philadelphus (Mock Orange)
Purple Fringe
Snowball
Tamarix
Viburnum opulus
White Fringe

MEDIUM

Buddleia
Calycanthus
Cydonia Japonica
Deutzia, Pride of Rochester
Forsythias
Hydrangeas
Kerria Japonica
Rhododendrons
Rhodotypus
Spirea billardi
Spirea Douglasi
Spirea prunifolia
Spirea Van Houttei
Symphoricarpus (in variety)
Weigelias (in variety)

DWARF OR SMALL

Azaleas
Barberry
Clethra
Deutzia gracilis
Deutzia Lemoine
Kerria japonica variegata
Mahonia
Philadelphus aureus
Spirea Anthony Waterer
Spirea Callosa alba
Spirea thunbergi
Weigelia variegata



ESTABLISHED 1877

The
CALL NURSERIES
Company
Perry, Ohio

**"TREES
THAT
GROW"**

Trees Plants Shrubs Vines

