

***Monthly Images will only be shown when there are changes**

March 2022 - June 2022 South Ops Highlights

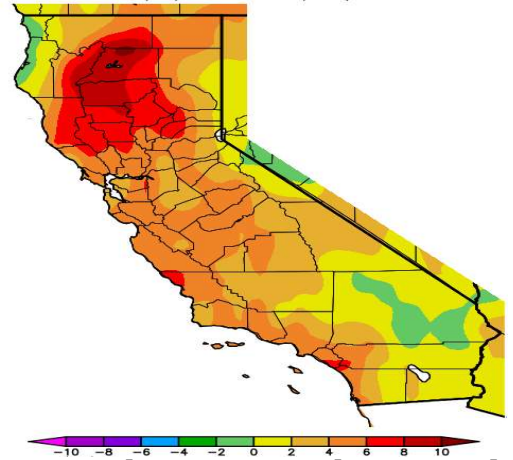
- Temperatures will be below normal in March and April and then above normal in May and June.
- Rainfall will be near to a little above normal in March and April and then below normal in May and June.
- The amount of Santa Ana wind events will be near to below normal in March and April.
- The marine layer will be shallower and not penetrate as far inland as normal in May and June.



Weather Discussion

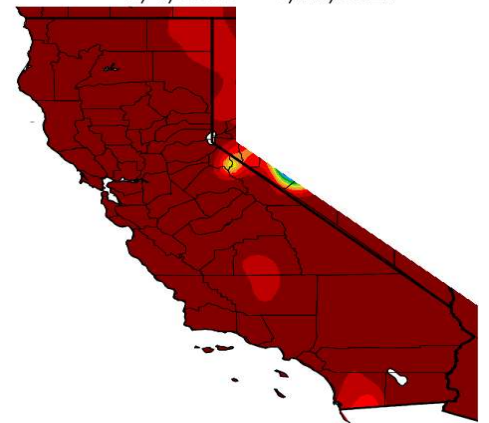
Just like in January, strong upper-level high pressure off the West Coast remained the dominant weather feature affecting Central and Southern California in February. This area of high pressure caused above normal temperatures most of the month. Record heat occurred across portions of the area February 9-13. A couple of upper-level low pressure areas brought brief periods of below normal temperatures during the last couple weeks of the month. Overall, temperatures were above normal for the month (**Fig 1**). Similar to January, there were no significant storms. Scattered showers with light rainfall totals moved across the region with the two low pressure areas. Otherwise, it was dry. The snow level was between 2,000 and 4,000 feet and less than a foot of new snow fell over the Sierra and the Southern California Mountains. Precipitation was below 25% of normal across almost the entire region (**Fig 2**). The snowpack in the Sierra has dropped to between 60% and 70% of normal due to minimal precipitation this January and February, our two wettest months (**Fig 3**). Moderate to strong Santa ana wind events occurred throughout the month as troughs moved up and over the high-pressure area and then down into the Great Basin and Desert Southwest. There were strong westerly winds over the mountains and deserts ahead of the two deep low-pressure areas.

Av. Max. Temperature dep from Ave (deg F)
2/1/2022 – 2/27/2022



**Fig 1: February 1st - February 27th
Temperature (% of Ave.)**

Percent of Average Precipitation (%)
2/1/2022 – 2/27/2022



**Fig 2: February 1st - February
27th Precipitation (% of Ave.)**

Data For: 28-Feb-2022

% Apr 1 Avg. / % Normal for this Date

53.0%	/	60.0%	— Northern Sierra / Trinity
58.0%	/	67.0%	— Central Sierra
54.0%	/	64.0%	— Southern Sierra

Fig 3: Snow pack as of Feb 28th, 2022



Fuels Discussion

There was little change in drought conditions in February, with the drought remaining in the moderate to severe category across the region (Fig 4). Due to the continued well below normal precipitation, both the 1000-hr and the 100-hr dead fuel moistures were below record levels most of the month (Figs 5@6). Widespread green-up continues across the lower elevations due to the warm conditions and abundant rainfall that occurred in December. The live fuel moisture continues to increase and is now well above normal over most of the region (Fig 7).

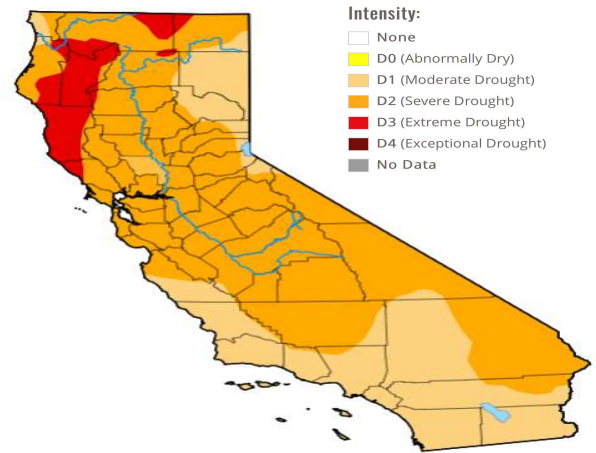


Fig 4: Drought Monitor February 24th, 2022

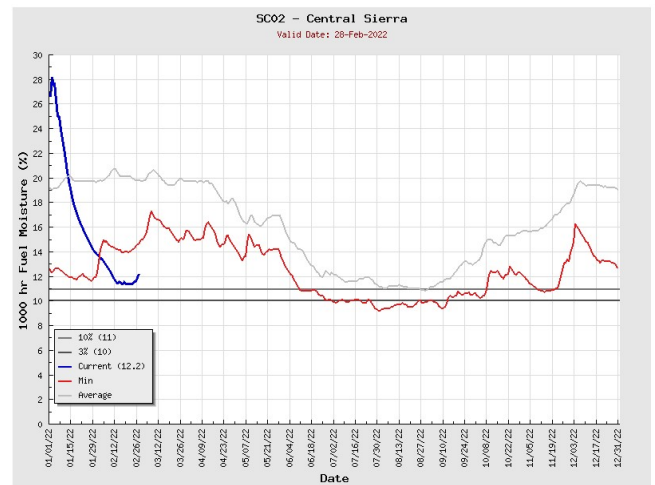


Fig 5: Central Sierra 1000 hr Dead fuel moisture February 28th

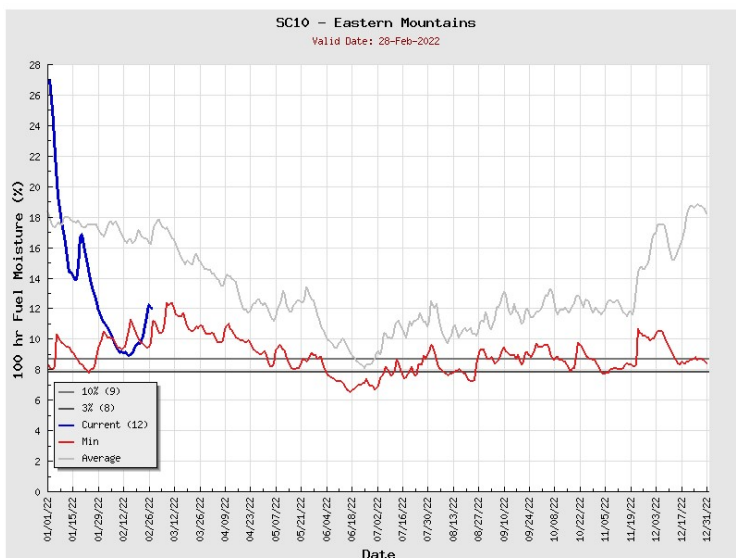


Fig 6: Eastern Mountains 100 hr Dead fuel moisture February 28th

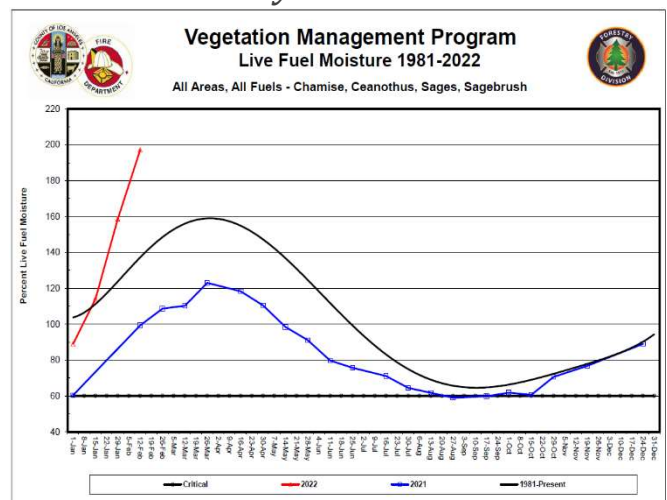


Fig 7: LA County Live Fuel Moisture February 15th

SOUTH OPS OUTLOOK

Sea surface temperatures remain below normal over both the Gulf of Alaska and the Equatorial Pacific Ocean (**Fig 8**). The sea surface temperatures off the West Coast are now starting to cool. These cooling sea surface temperatures will likely allow the upper-level area of high pressure just off the West Coast to move westward. This will allow troughs from the Gulf of Alaska to drop south into California. Computer models show a little below normal sea surface temperatures off the West Coast through April (**Fig 9**). Thus, expect below normal temperatures and near to a little above normal precipitation across the region through April. Computer models show that sea surface temperatures over both the Gulf of Alaska and off the West Coast will warm May and June. Therefore, high pressure will most likely set up just off the West Coast once again. This will bring above normal temperatures and below normal precipitation. The amount of Santa Ana wind events will likely be near to below normal in March and April. The marine layer over the coastal areas will likely be shallower and not penetrate as far inland as normal in May and June.

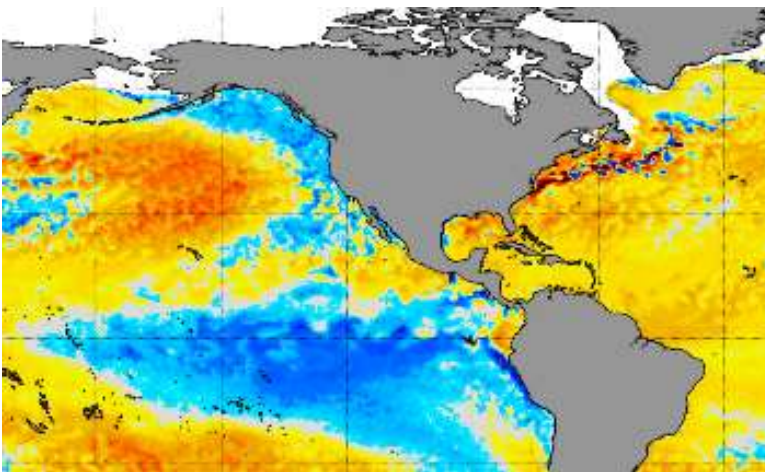


Fig 8: Sea Surface Temperature Anomaly, February 28th, 2022

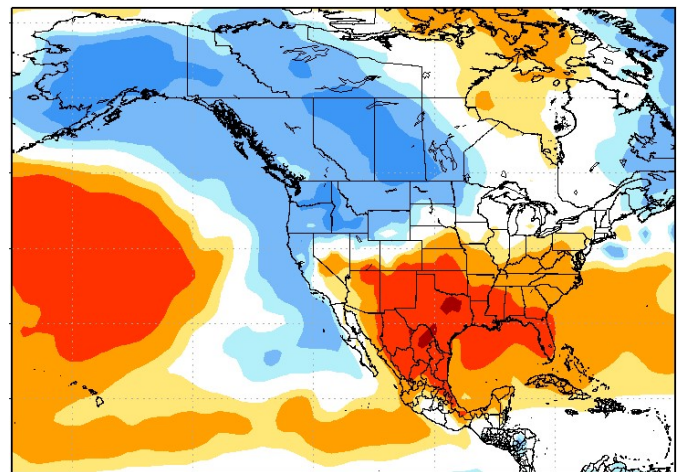
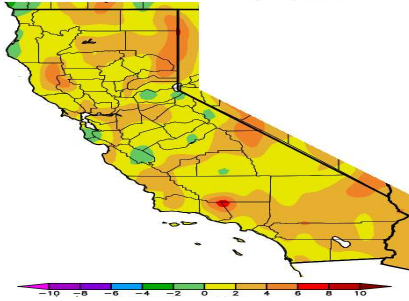


Fig 9: Forecast Temperature Anomalies for March through April, February 28th, 2022



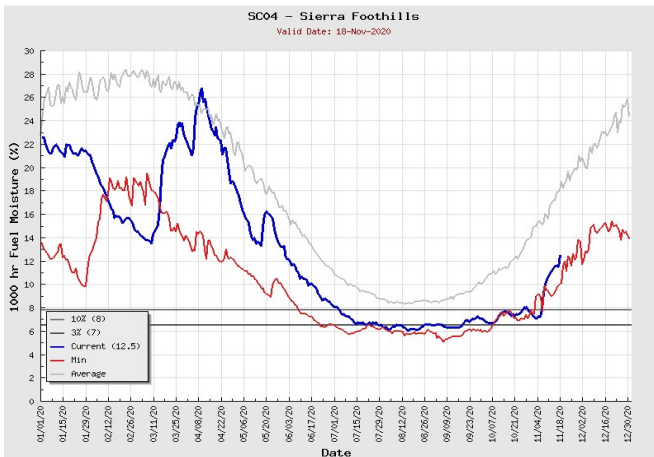
Select Intel Links used in the forecast

Av. Max. Temperature dep from Ave (deg F)
11/1/2020 - 11/19/2020



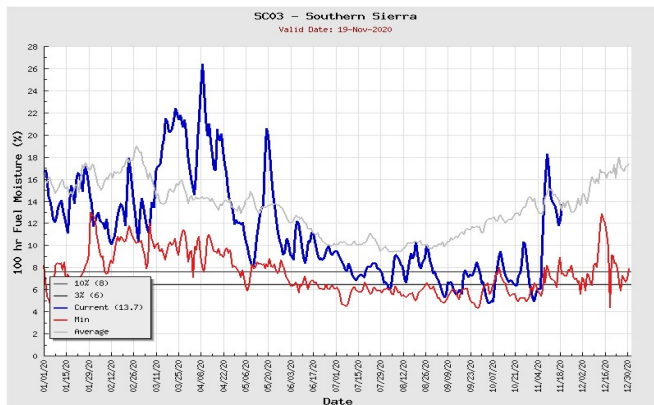
Climate

- <https://calclim.dri.edu/pages/anommaps.html>



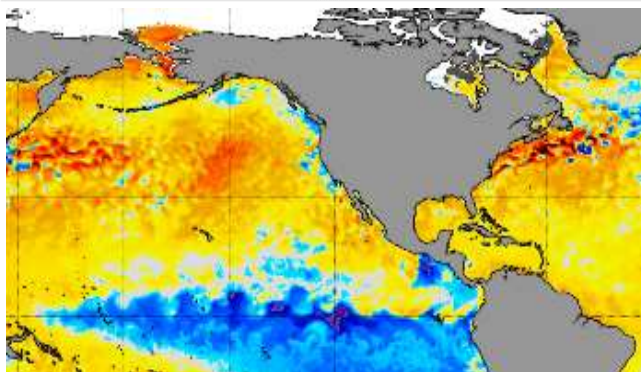
1000 hr dead fuel moisture

- https://gacc.nifc.gov/oscc/fuelsFireDanger_Thousand.php



100 hr dead fuel moisture

- https://gacc.nifc.gov/oscc/fuelsFireDanger_Hundred.php



Current sea surface temperatures

- <https://www.ospo.noaa.gov/Products/ocean/sst/anomaly/>