

104
8972
17
大錢圖錄一冊

吳伯宏贈本讀書私識汗洛下近因

錢荒者戶有廣鑄銅幣之舉其數

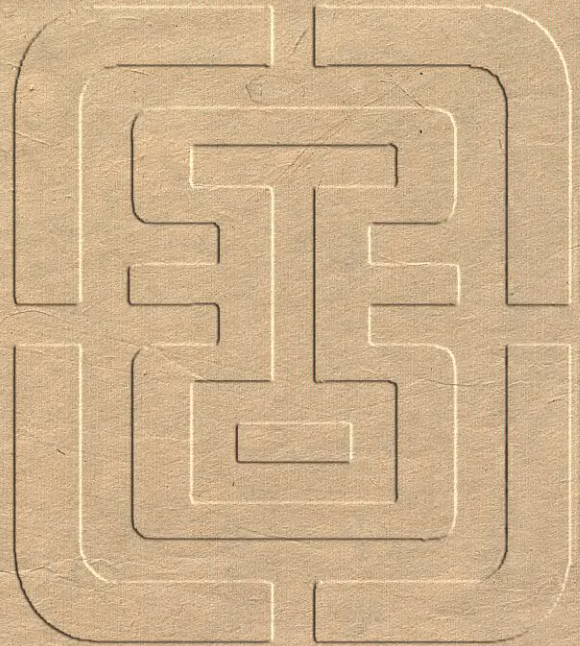
以考制錢十其文則中西合璧錢曰一

圓圖法而凡有選法有莫之為而為者

幣故常 昭文生



甲辰夏月記

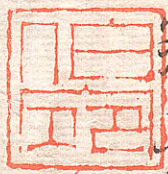


大錢圖錄
冊 | 冊
書号 63

偶得此大錢圖錄回以一分奉



若理移分臧之子年先生於金石利外兼者泉幣
是書則其官京曹時穆壽成編臣存掌故尤翔
實有裨實用 堅亟名位未可量異日散歷大農或
際議圖注時出此一為致叢定當憶及堯獻書此
以為息壤不第誌吾兩人在茲蘆中通書之樂也光
緒丁酉三月廿六日仁和吳昌綬記於江蘇按察署齋



大泉圖錄

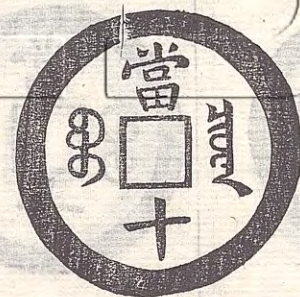
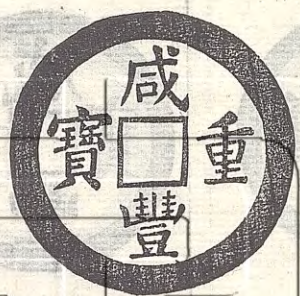
光緒二年八月
大興孫汝梅署

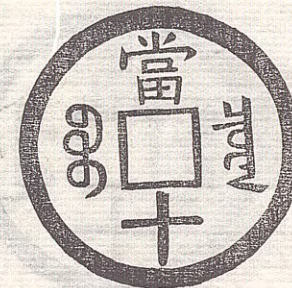
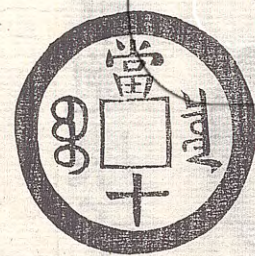
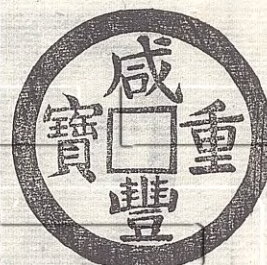
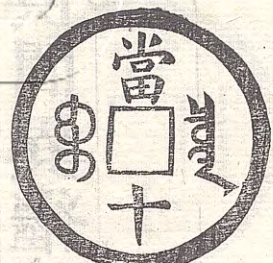
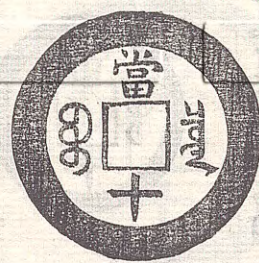
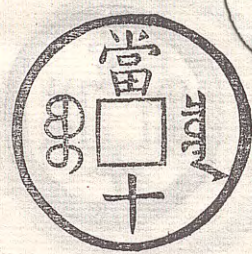
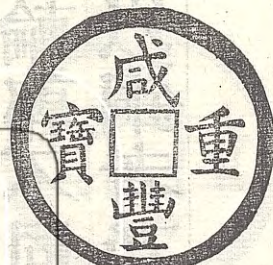
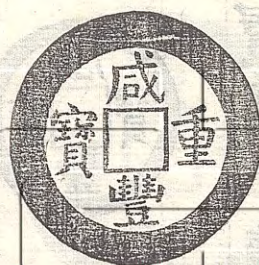
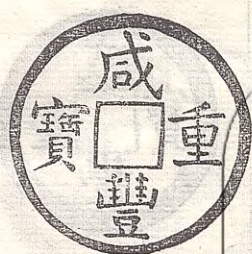
咸豐三年軍務日滋滇銅不能繼壽陽相國權戶部議
請鑄當十大錢兼增鐵冶以供度支旋推及當五十當
百錢巡防王大臣續請鑄當五百當千兩種並以銅當
十暨鉛鐵當一制錢相輔而行初亦公私稱便未幾私
鑄蠶起利之所在雖頻置重典而不畏因之各錢漸廢
僅銅鐵當十尙暢行戶部復請遣員赴山西購鐵分局
鼓鑄鐵錢滋益多七年正月忽訛言遠徧五城一日而
鐵錢頓廢官役比戶曉諭民不信從遂只存銅當十一
種都城以外雖仍行銅制錢鉛鐵錢未久即罷而城中市肆廿
餘年行使當十已習爲固然第銀直日以昂銀一兩可

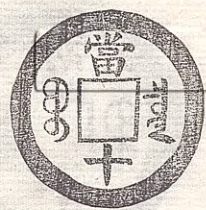
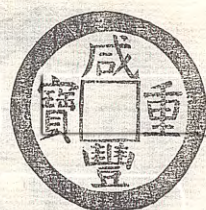
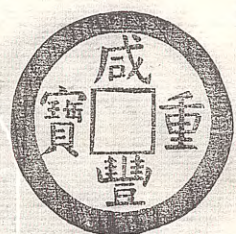
易銅當十錢六七百各直省或鑄而未行或行之不久
 或僅頒母錢僅呈樣錢迄未開鑄余時窮而在下所收
 亦弗能徧特略存梗概儻更百十年必無有能述其制
 作者光緒紀元乙亥殘臘無事姑檢舊藏摹載之未備
 者繼幼雲振復爲補卅餘拓並互相定正遂成是編至
 一應奏議及行使章程錢制輕重卯額增減省局開停
 采辦艱易具在 國史余則但詳形製等於不賢識小
 其得失利病亦不復贅說寶鈔官票各坵載一式與閩
 丹初論鈔書並列於後實事求是用紀一朝之掌故焉
 歙鮑康識

大錢圖錄

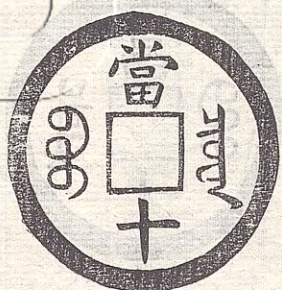
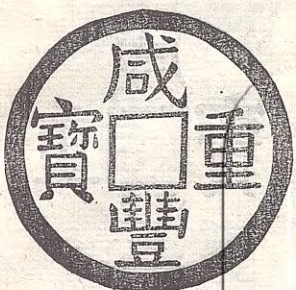
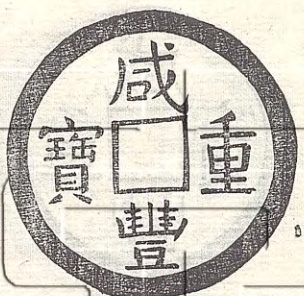
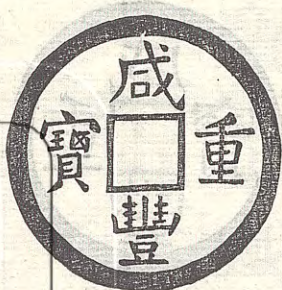
歙鮑康子年著

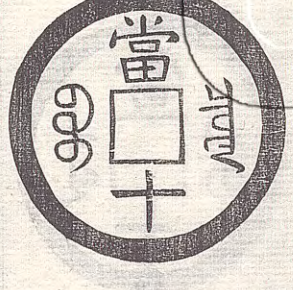
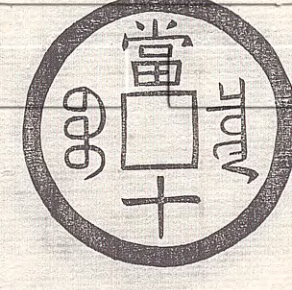
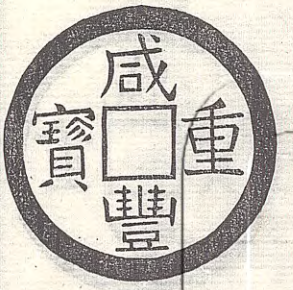
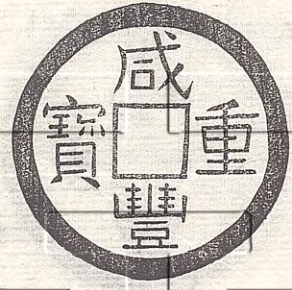
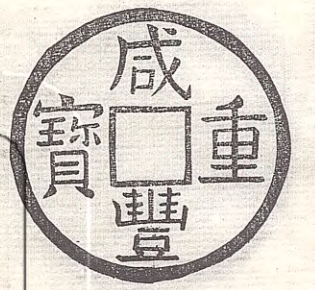




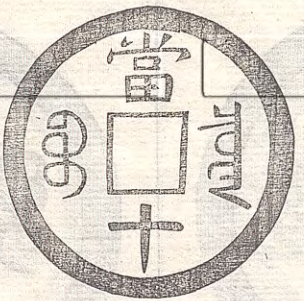
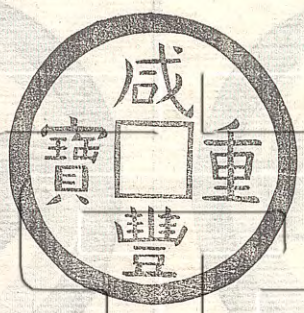


咸豐重寶當十錢幕清文曰寶泉戶部寶泉局鑄大小
 凡十品輪郭不同面幕寶字俱間異繼幼雲所收尙有
 錫鑄裏以銅者乃私鑄不載

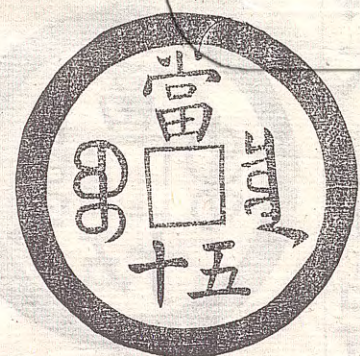
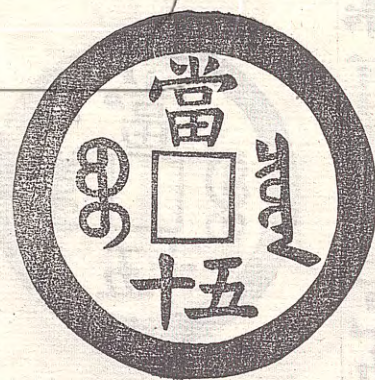
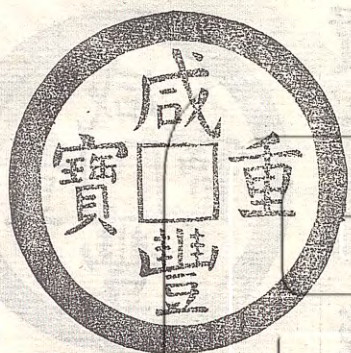
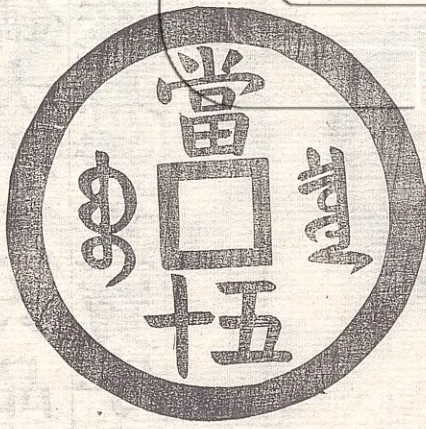
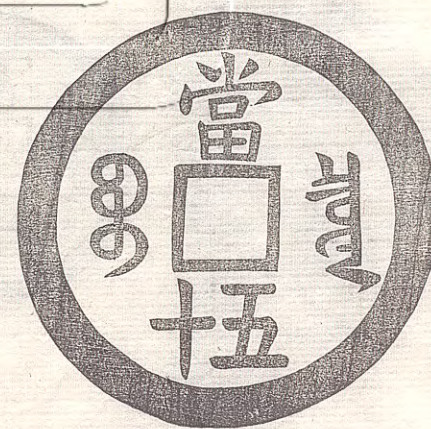
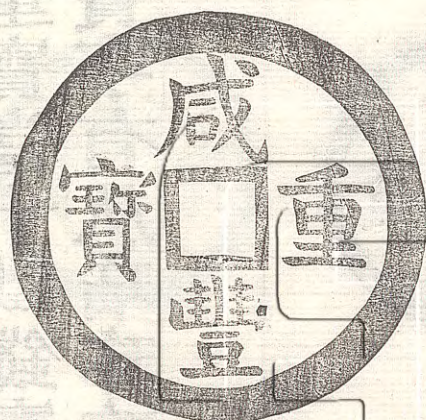


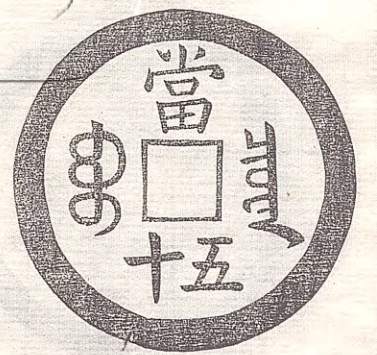
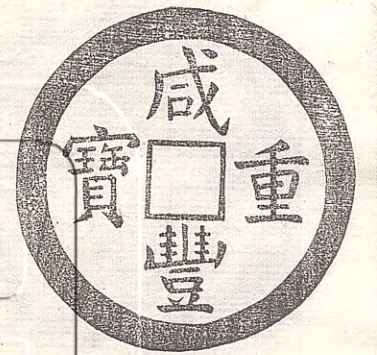


咸豐重寶當十鐵錢寶泉局鑄大小凡六品時設有分局故寶字有从珞珞珍珍之殊幕清文寶字亦間有異者

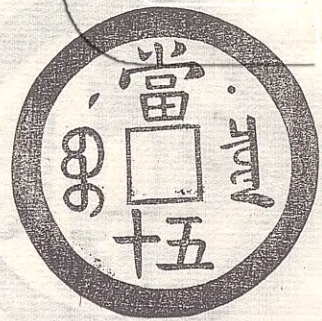
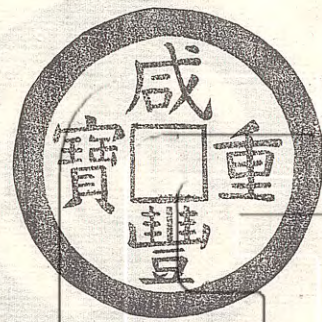


咸豐重寶當十錢亦寶泉局鑄幼雲所收云以精錫和鉛鑄成乃僅呈錢樣未經允行者附載之

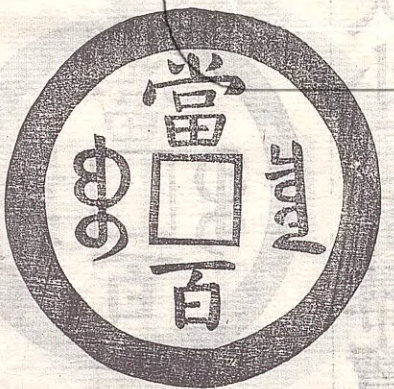
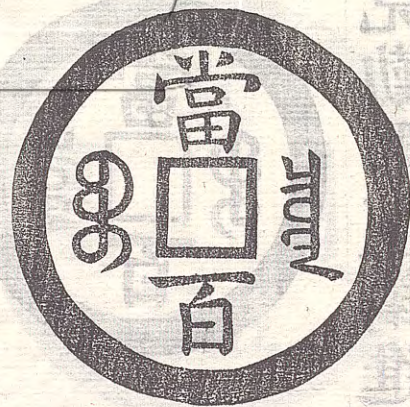


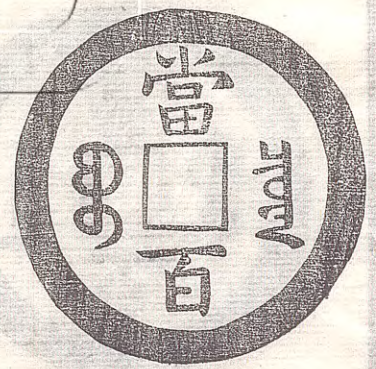


咸豐重寶當五十錢寶泉局鑄大小五品面幕寶字異

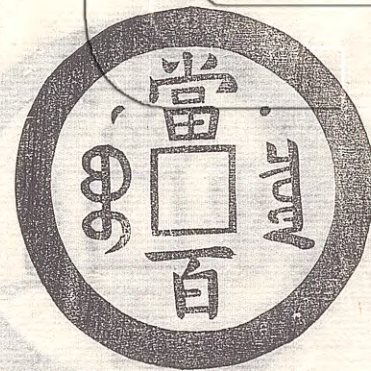
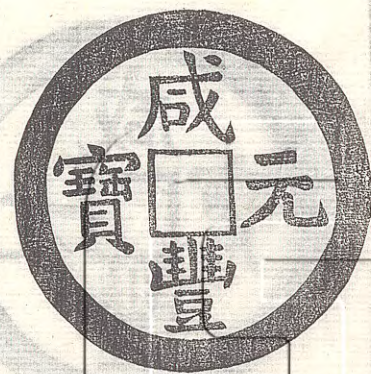


咸豐重寶當五十錢制較小幕有星月克勤郡王鑄進

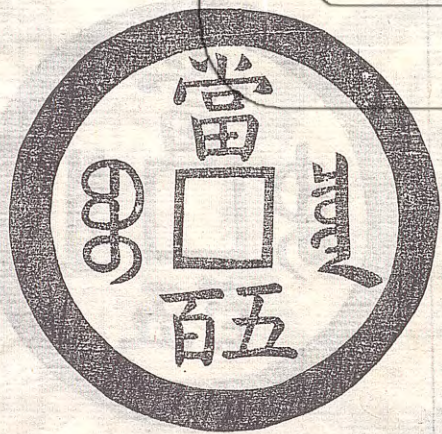
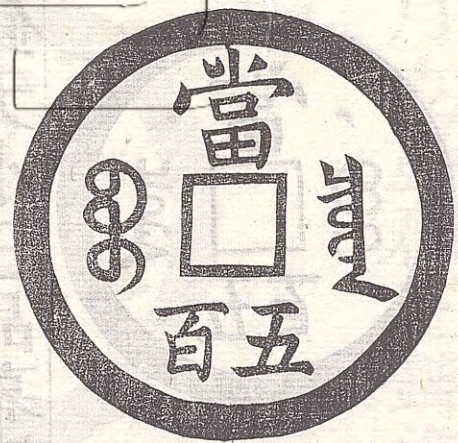


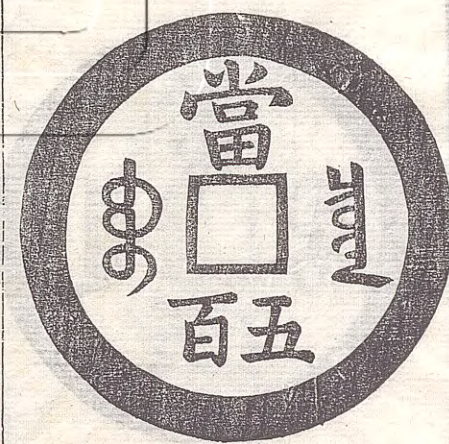


咸豐元寶當百錢寶泉局鑄大小三品幕寶字間異



咸豐元寶當百錢幕有星月克勤郡王鑄進

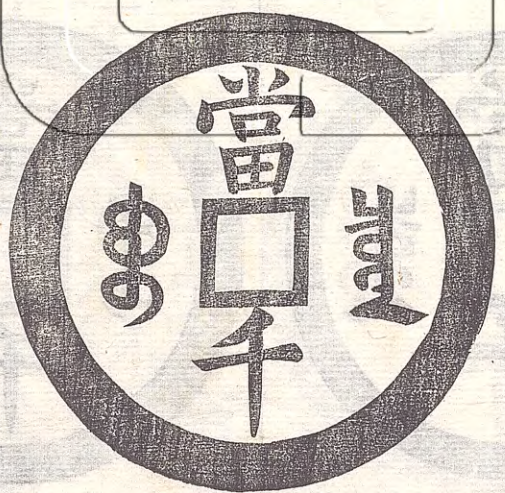




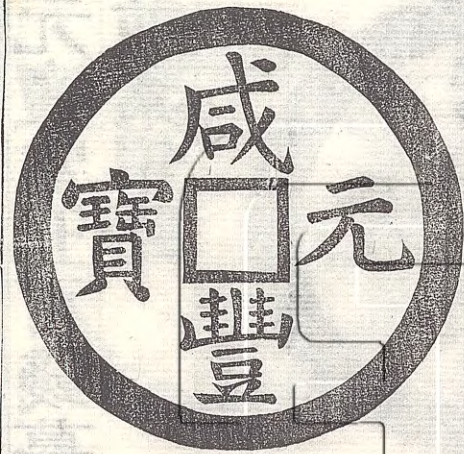
咸豐元寶當五百錢寶泉局鑄大小三品幕寶字間異



咸豐元寶當五百錢幕有星月克勤郡王鑄進 以上
四品並紫銅鑄



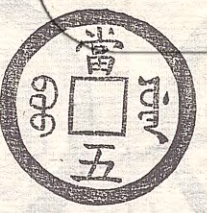
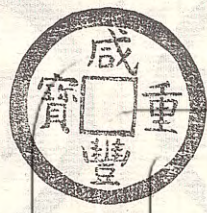
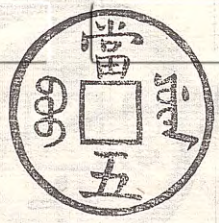
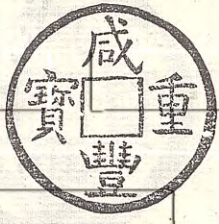
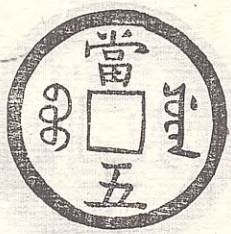
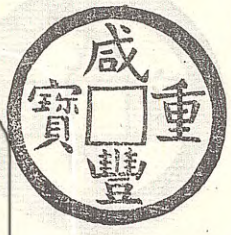
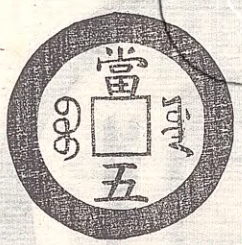
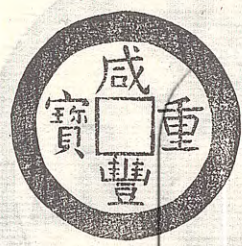
咸豐元寶當千錢寶泉局鑄 案當五百當千大錢戶
工兩局鑄者並紫銅此乃黃銅或云當係母錢



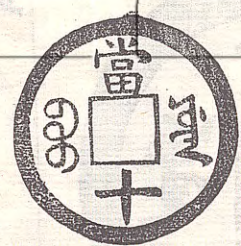
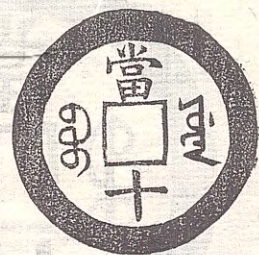
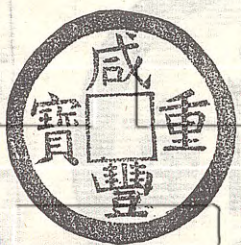
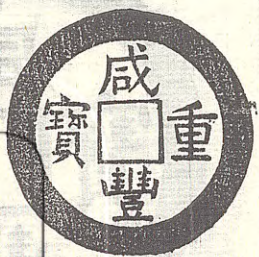
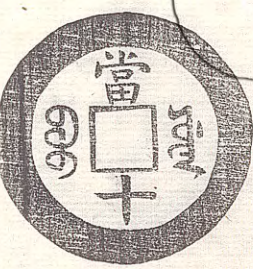
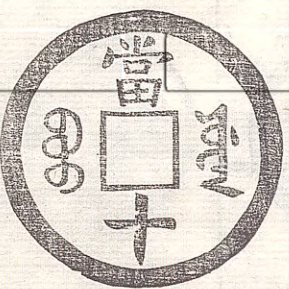
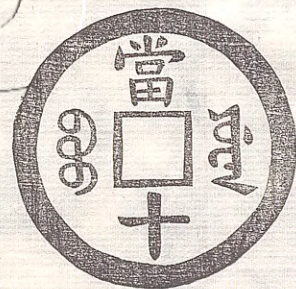
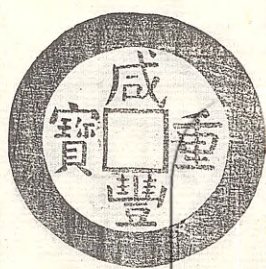
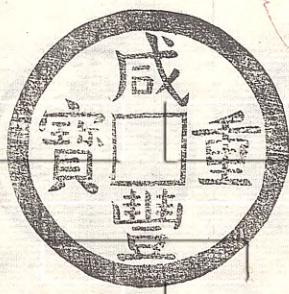
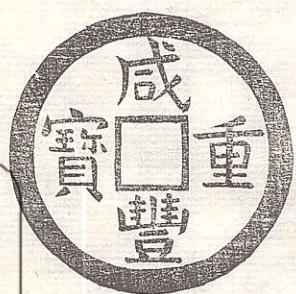
咸豐元寶當千錢寶泉局鑄大小三品幕寶字亦間異
 第一品幼雲所收局匠謂之花穿並紫銅鑄 案大錢
 文字多出名手田吉生戶部祥書者不少餘不能盡悉
 或云當五百當千者趙文恪所書聞初請壽陽相國書
 之相國以蔡京曾書崇寧大錢為言執不可



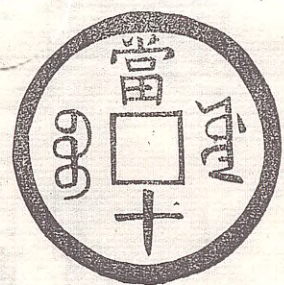
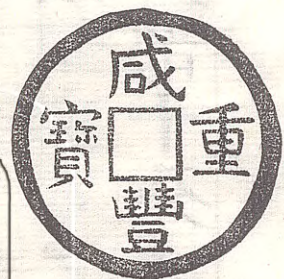
咸豐元寶當千錢幕有星月克勤郡王鑄進幼雲所收
云黃銅鑄其邊隆起如虬脊取便印范亦母錢也



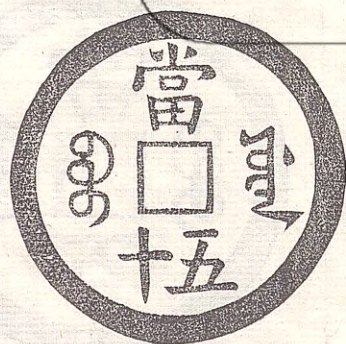
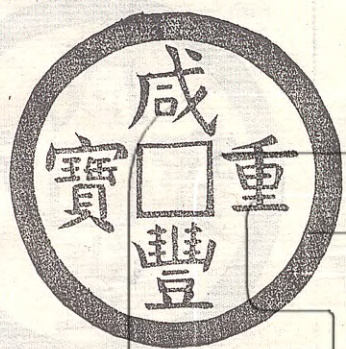
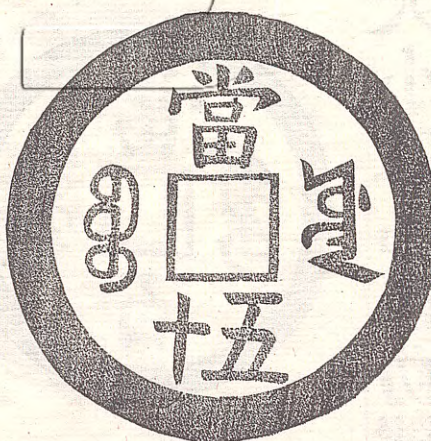
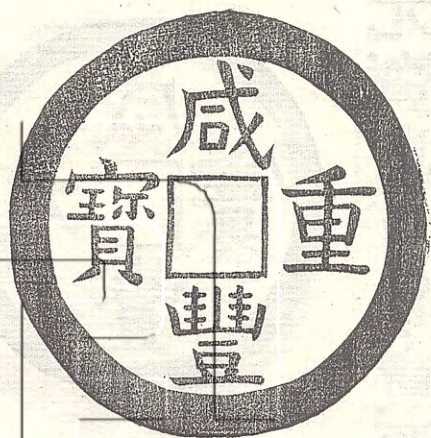
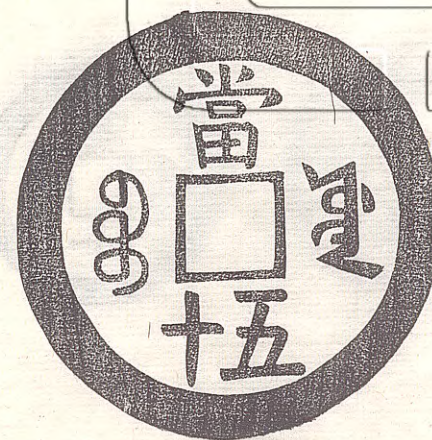
咸豐重寶當五錢幕清文曰寶源工部寶源局鑄大小
四品輪郭不盡同 案當五錢戶局鑄者未之見



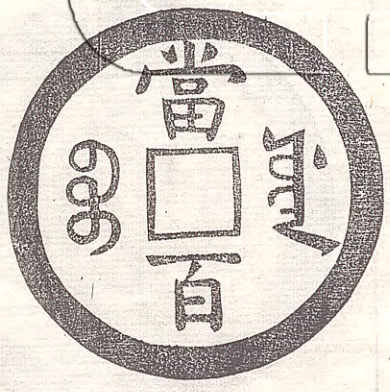
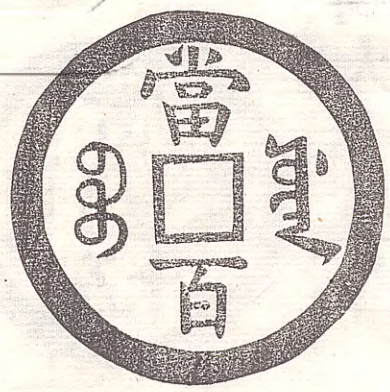
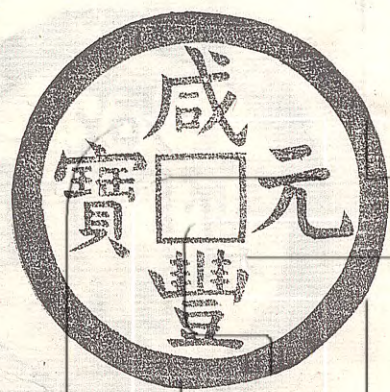
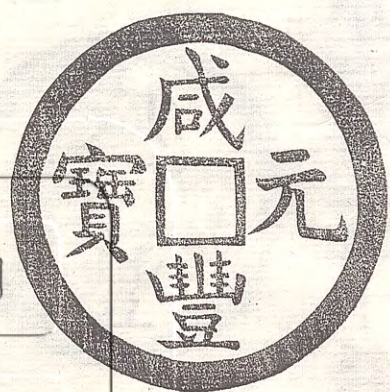
咸豐重寶當十錢寶源局鑄大小五品輪郭不同案
工局所鑄亦本之戶局母錢惟寶字率从珍每歲卯額
不及戶部十分之三故流布較少



咸豐重寶當十鐵錢寶源局鑄

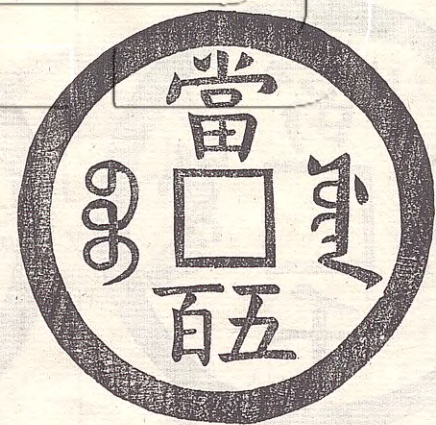
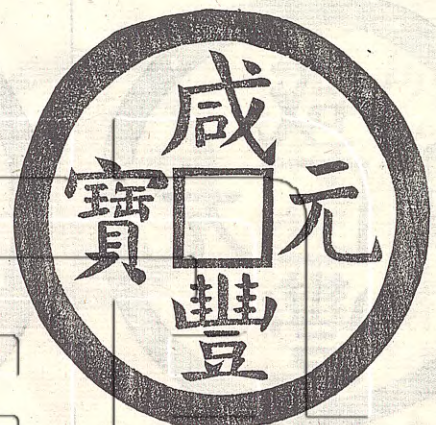


咸豐重寶當五十錢寶源局鑄大小三品

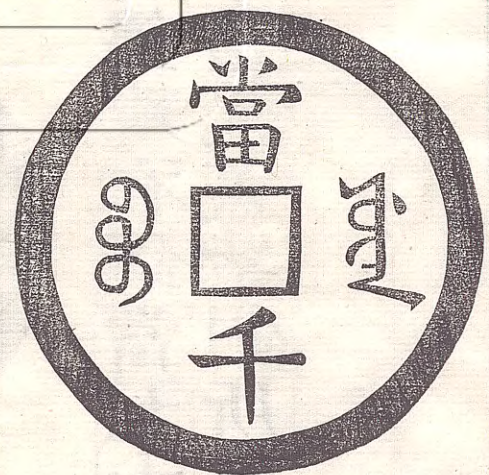
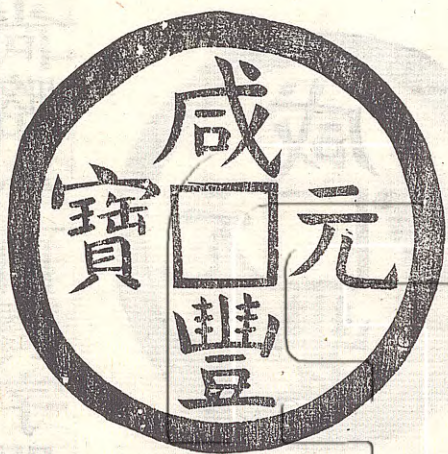


咸豐元寶當百錢寶源局鑄大小二品視初鑄當五十

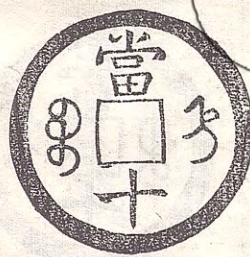
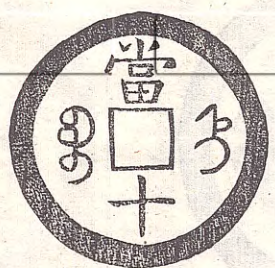
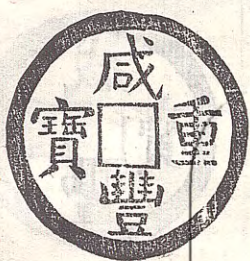
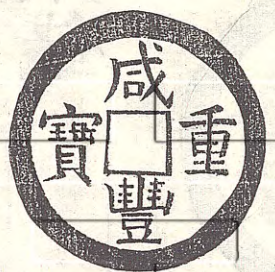
錢制尙略小面寶字間異

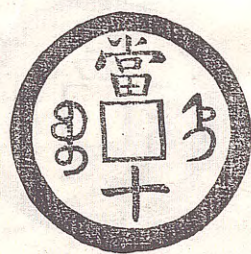
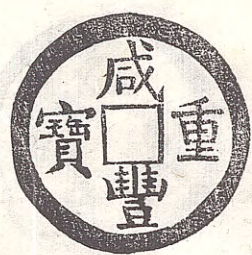


咸豐元寶當五百錢寶源局鑄視初鑄當五十錢大小相埒輪郭尙較窄其直則十倍之蓋紫銅所鑄爲足寶貴耳

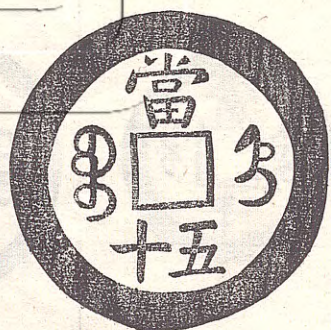
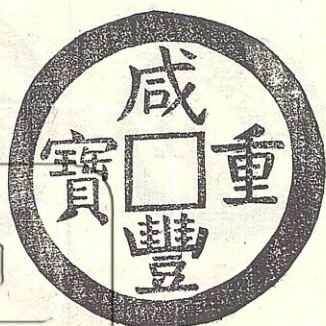
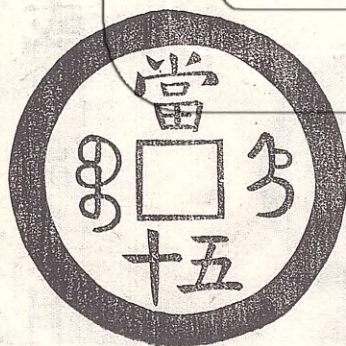
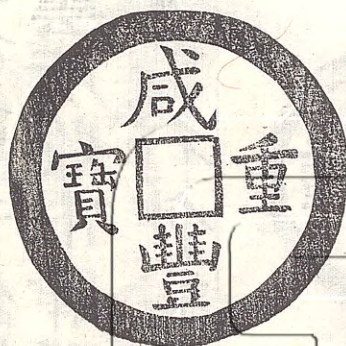


咸豐元寶當千錢寶源局鑄前一品紫銅錢次品鐵錢
乃幼雲所收市肆則未之見或因局中銅斤匱乏偶一
試鑄未議行使者耳

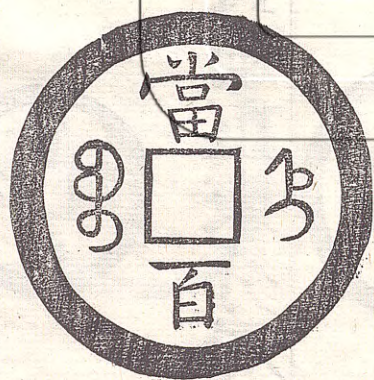
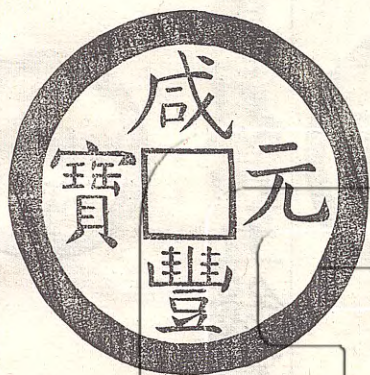




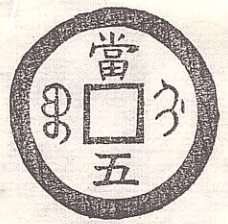
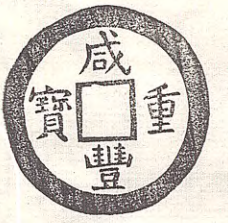
咸豐重寶當十錢幕文曰寶直直隸省鑄大小三品俗呼雞爪錢



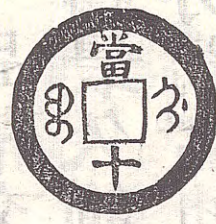
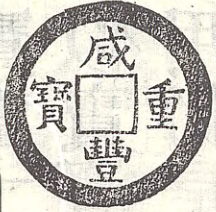
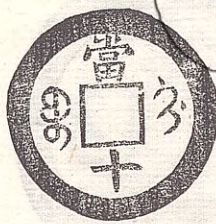
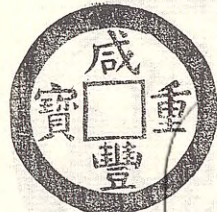
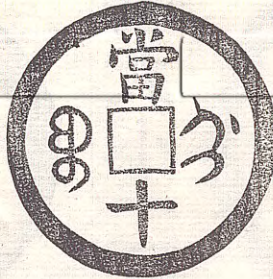
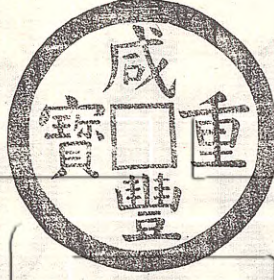
咸豐重寶當五十錢寶直局鑄大小三品



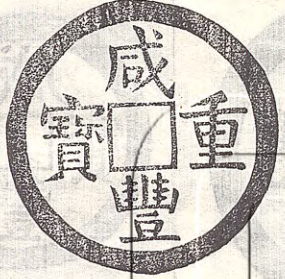
咸豐元寶當百錢寶直局鑄



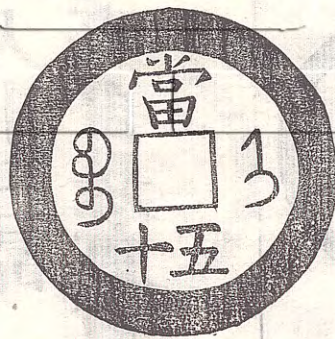
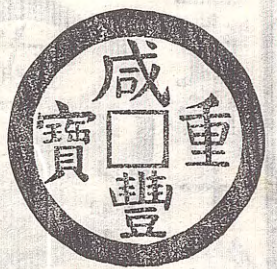
咸豐重寶當五錢幕文日寶薊直東分局鑄



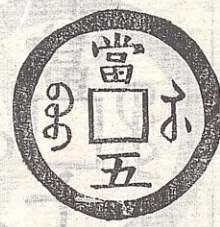
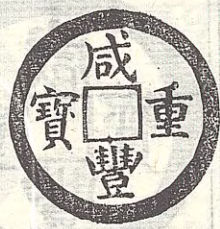
咸豐重寶當十錢寶薊局鑄大小三品 案此種幕文亦似寶吉但吉林從無鑄錢事自是直東分鑄特清文稍不精耳



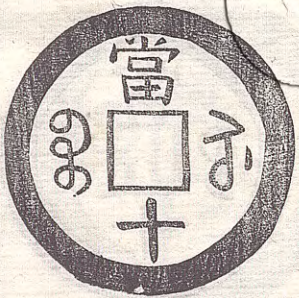
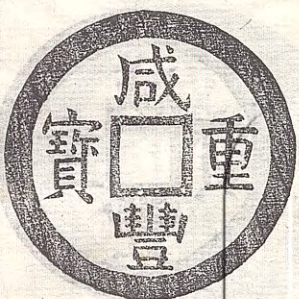
咸豐重寶當十鐵錢亦寶薊局鑄

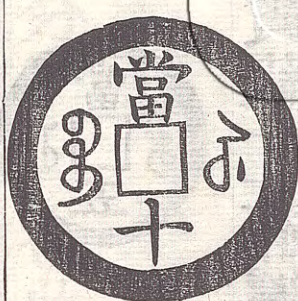
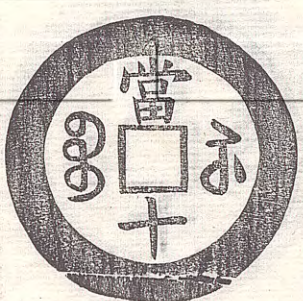
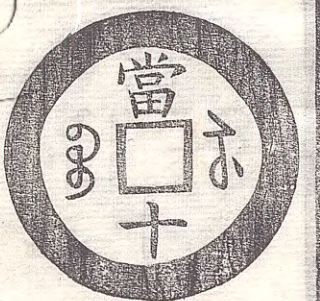
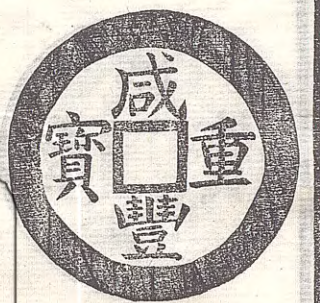


咸豐重寶當十當五十錢各一品幕文與前數品小異
幼雲云似寶濟但山東省停鑄最久詢之戶部錢局云
東陵所用仍是寶薊亦直東分鑄者也此種色倍黃

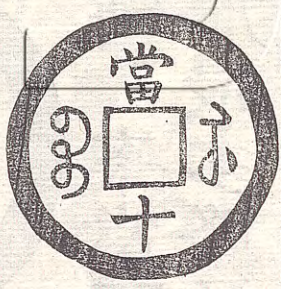
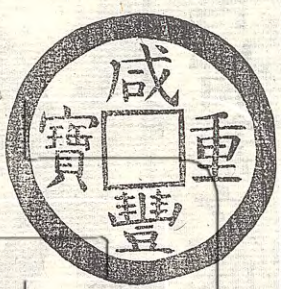


咸豐重寶當五鐵錢幕文曰寶蘇江蘇籌防局鑄

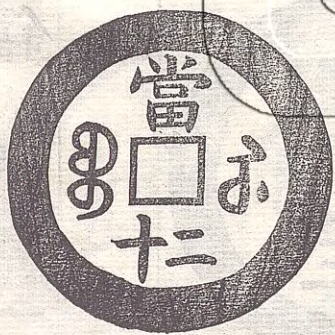
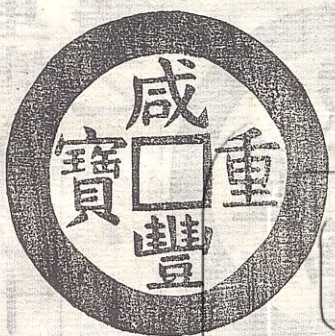




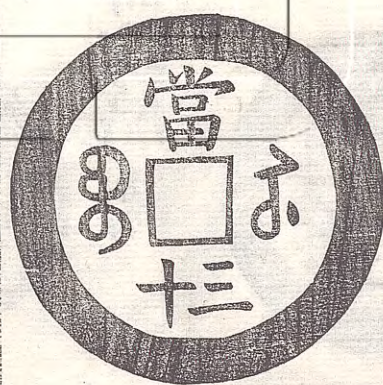
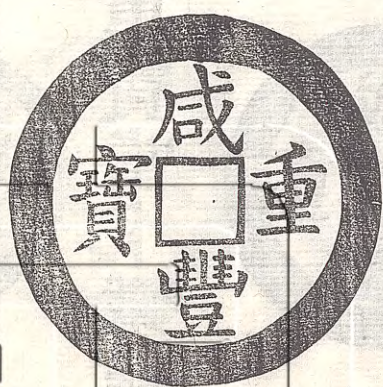
咸豐重寶當十錢寶蘇局鑄共五品前二品省局鑄後
三品籌防局籌濟局淮安局分鑄



咸豐重寶當十鐵錢江蘇籌防局鑄



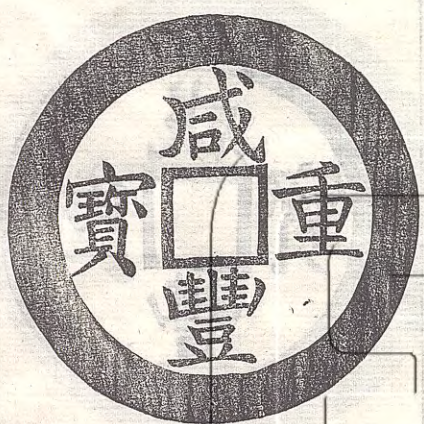
咸豐重寶當二十錢寶蘇局鑄 案當二十錢福建省亦曾鑄之

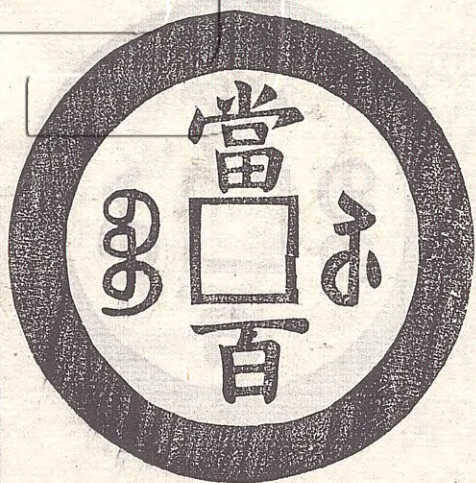


咸豐重寶當三十錢寶蘇局鑄 案當三十錢僅見此

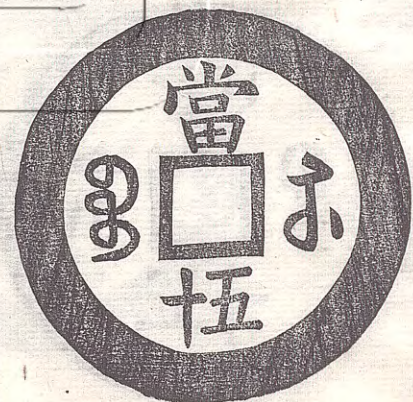
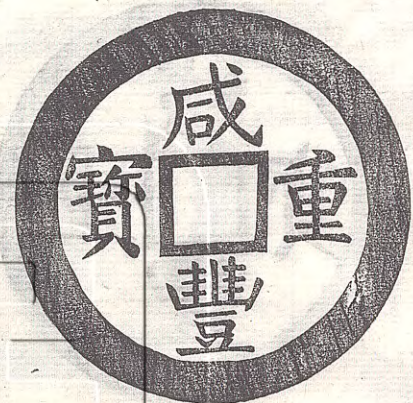
品他省皆無之時江蘇省設局最多路子端觀察慎莊兵備淮揚知余有是癖悉取以寄余特一一選載以廣見聞

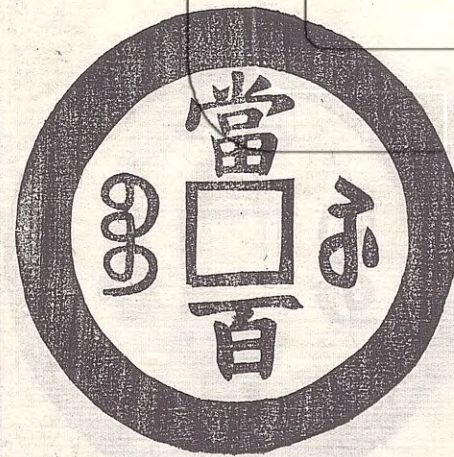
咸豐重寶當五十錢寶蘇分局鑄



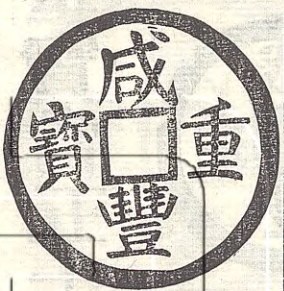


亦重寶當五十錢江蘇籌防局淮安局敦信局分鑄





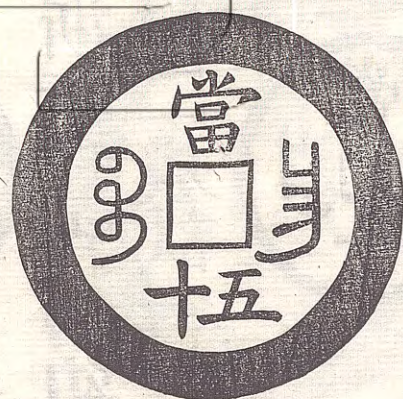
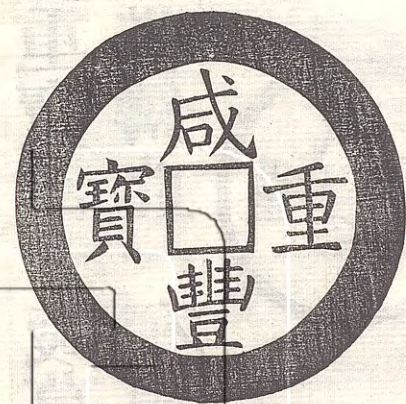
咸豐元寶當百錢寶蘇分局籌防局籌濟局淮安局分鑄



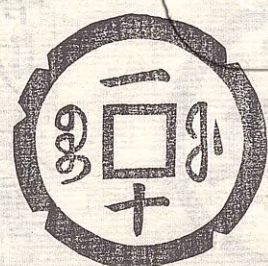
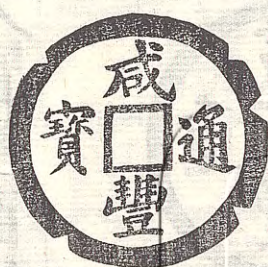
咸豐重寶當十錢幕文曰寶浙浙江省鑄幼雲所收云浙江僅鑄此一種頒發各府以二成試行未踰年即廢



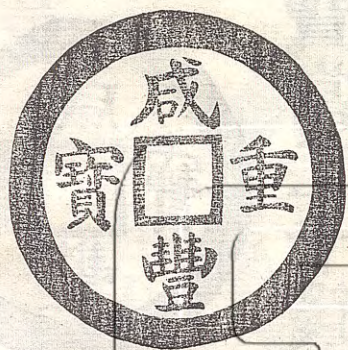
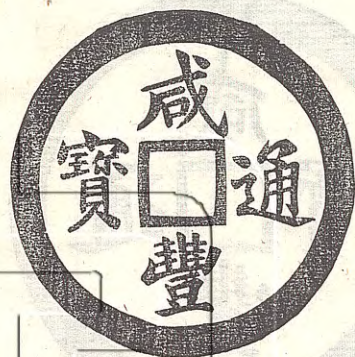
咸豐重寶當十錢幕文曰寶昌江西省鑄



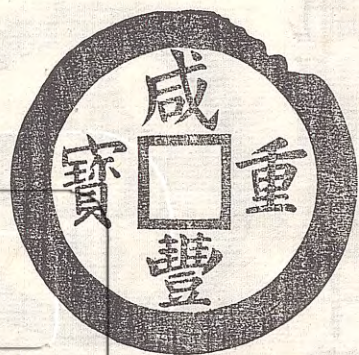
咸豐重寶當五十錢寶昌局鑄幼雲所收



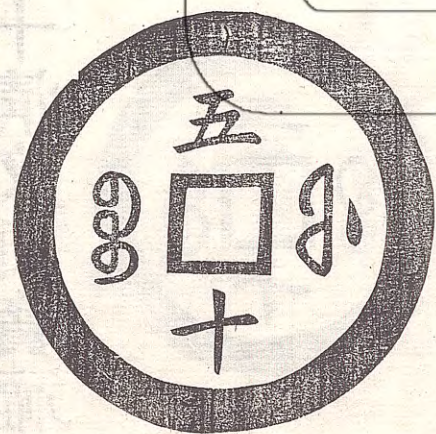
咸豐通寶當十錢幕文曰一十清文曰寶福福建省鑄



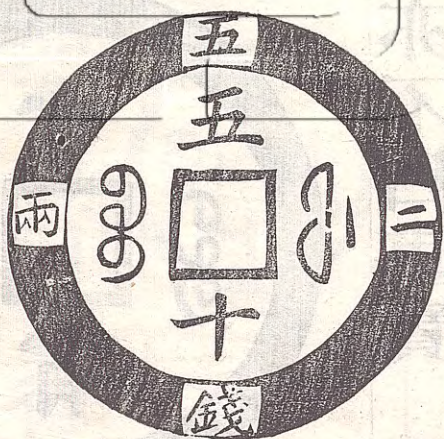
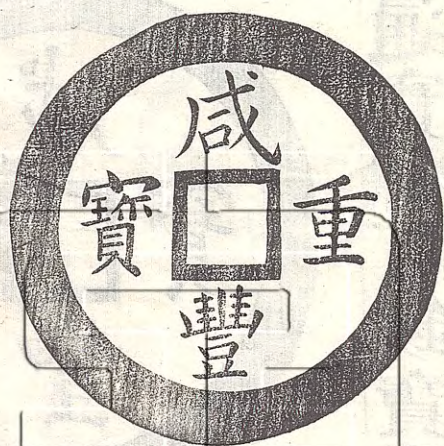
咸豐通寶當二十錢寶福局鑄次品曰重寶



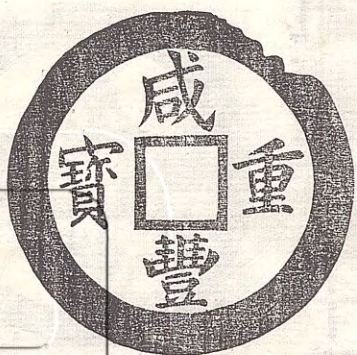
亦重寶當二十錢寶福局鑄背輪有計重一兩四字



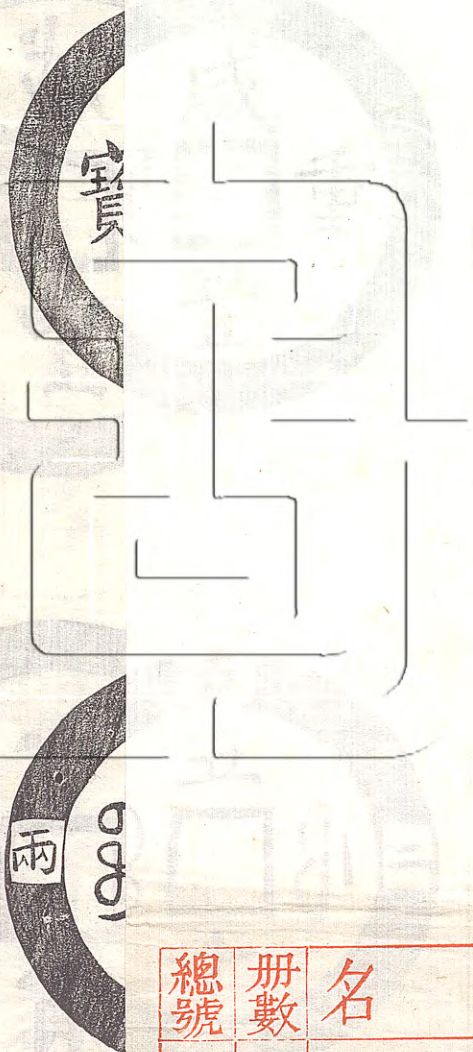
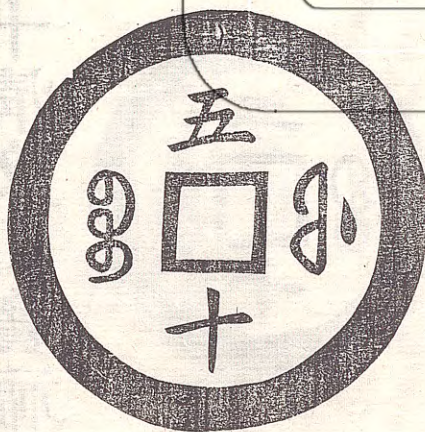
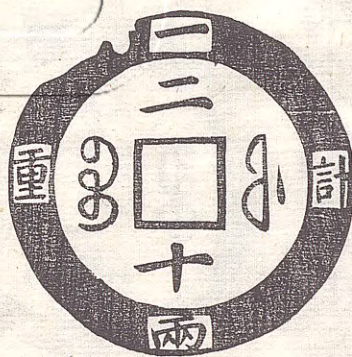
咸豐通寶當五十錢寶福局鑄 案當二十者有通寶重寶兩種其餘各品應亦同之



咸豐重寶當五十錢寶福局鑄背輪有二兩五錢四字與前當二十一品俱鑄及所重兩數形製甚新幼雲云似采取日本國寶永錢制必開局時所鑄其後則省繁



亦重寶當二十錢寶福局鑄背輪有計重一兩四字

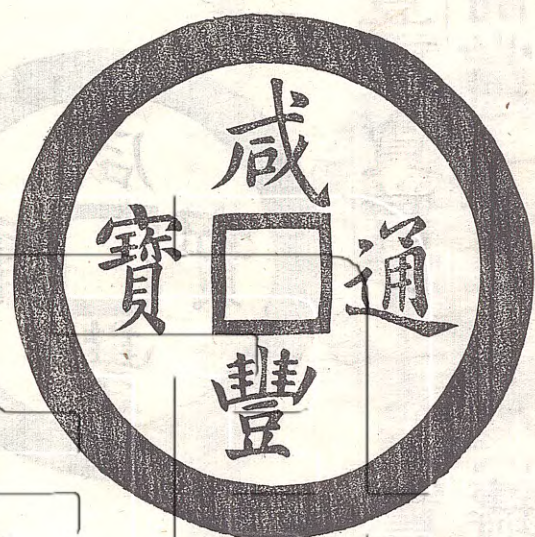


咸豐重寶當五十錢寶福局鑄幕輪有二兩五錢四字
與前當二十一品俱鑄及所重兩數形製甚新幼雲云
似采取日本國寶永錢制必開局時所鑄其後則省繁

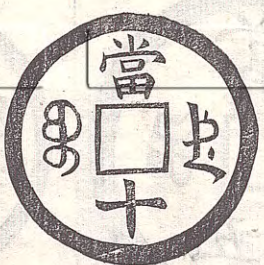
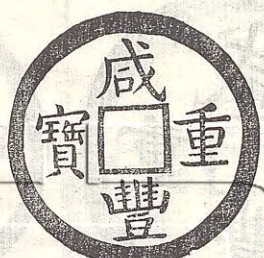
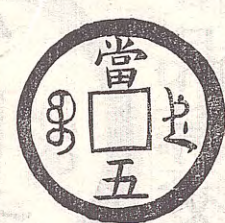
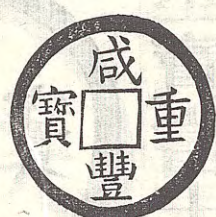
| | | | | |
|------|-----|---|----|------|
| 章氏藏書 | 書 | 名 | 冊數 | 總號 |
| 大錢圖錄 | () | 丁 | 一 | 一八六〇 |

64 稿

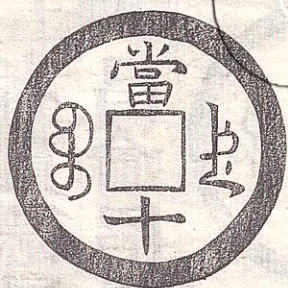
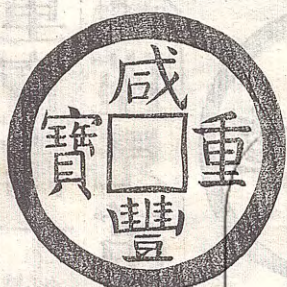
就簡胥歸常制矣



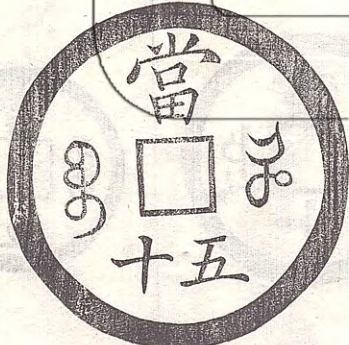
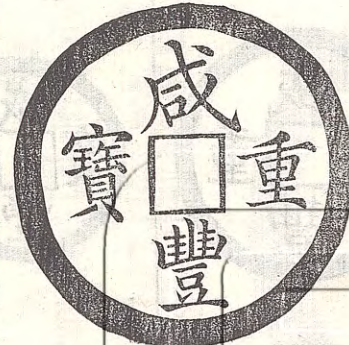
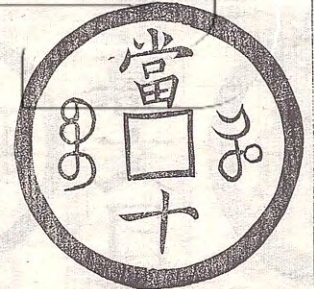
咸豐通寶當百錢寶福局鑄亦不曰重寶 案福建所鑄大錢甚精種類亦較多制作與他省復異皆幼雲及程容伯所收



咸豐重寶當五當十錢各一品幕文曰寶德湖南省鑄

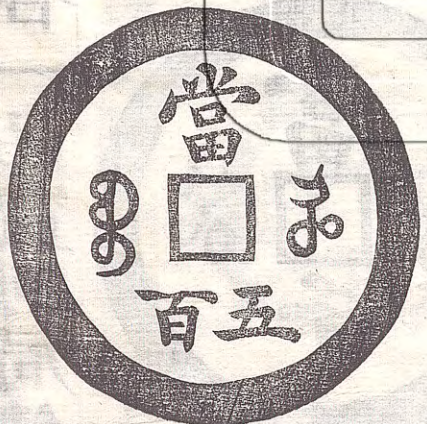
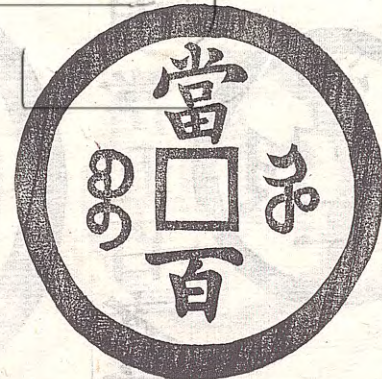


咸豐重寶當十鐵錢亦有當五者寶德局鑄 案湖南
 北大錢僅見常德府分鑄者武昌淪陷最先自未開鑄

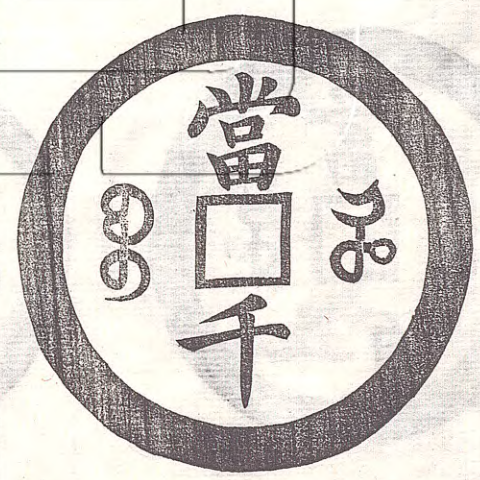


咸豐重寶當十當五十錢各一品幕文曰寶河河南省

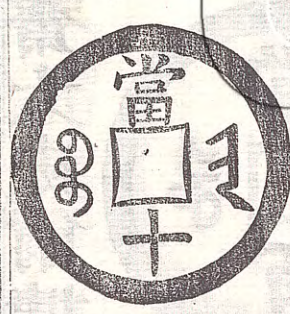
鑄錢文秀整幼雲云是周容齋太史爾埔書



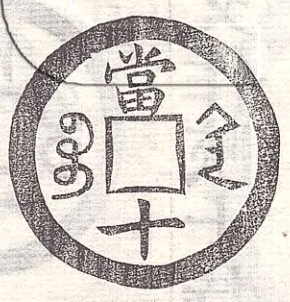
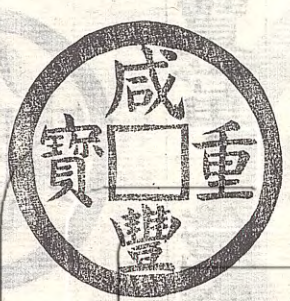
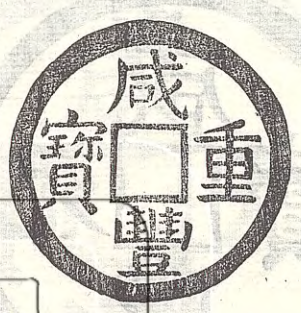
咸豐元寶當百當五百錢各一品寶河局鑄



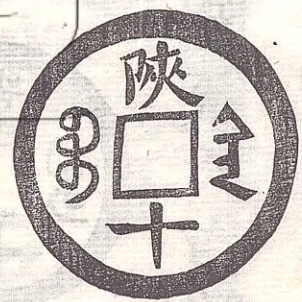
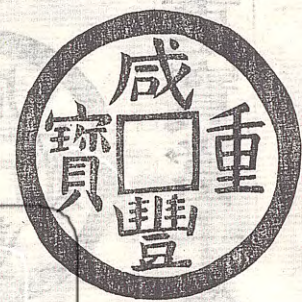
咸豐元寶當千錢寶河局鑄與當五百者並紫銅錢



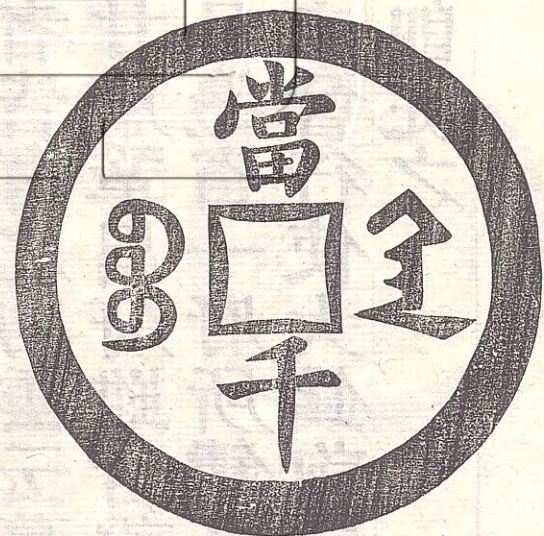
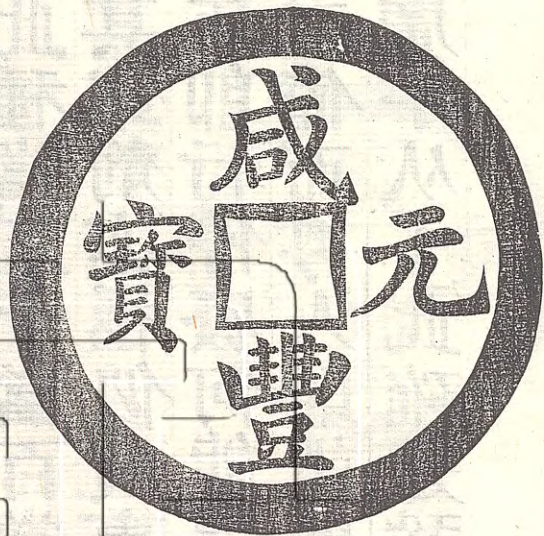
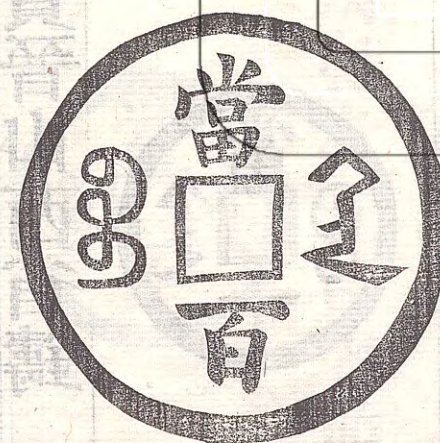
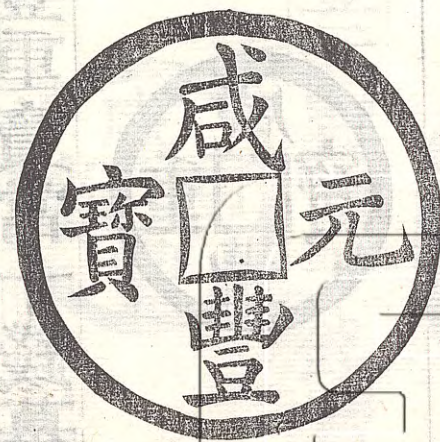
咸豐重寶當十錢幕文曰寶晉山西省鑄



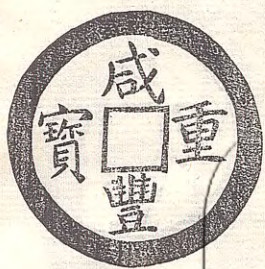
咸豐重寶當十錢幕文曰寶陝陝西省鑄大小二品文稍異



亦重寶當十錢寶陝局鑄幕文作陝十特新



咸豐元寶當百當千錢各一品寶陝局鑄當千者紫銅

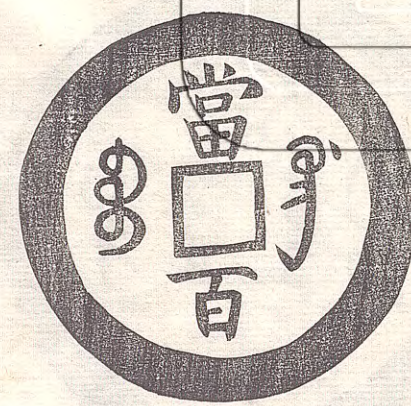


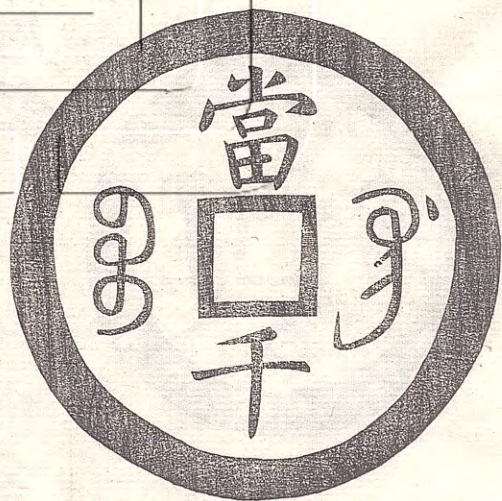


咸豐重寶當十錢幕文曰寶鞏甘肅省鑄大小二品
 案此種當五十當百當千者皆有之幼雲云幕文似寶
 廣其銅劑亦極似廣東錢甘肅鞏昌府雖曾設局雍正
 六年即行停廢何能遽復且邊省一府所鑄又何能若
 是之備而粵人則謂廣東未曾行使大錢詢之戶局亦
 曰廣字从弓此確是鞏字即從之



咸豐重寶當五十錢寶鞏局鑄

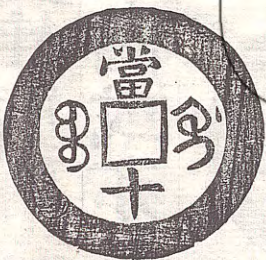
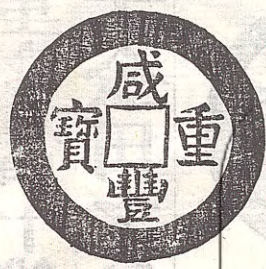




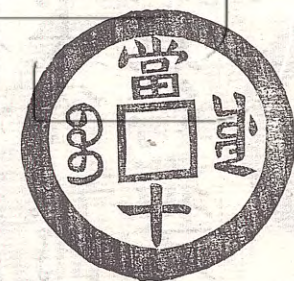
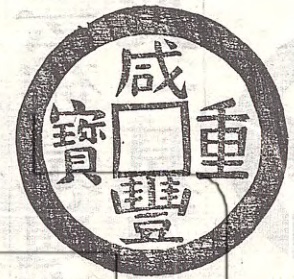
咸豐元寶當百當千錢各一品寶華局鑄當千者紫銅



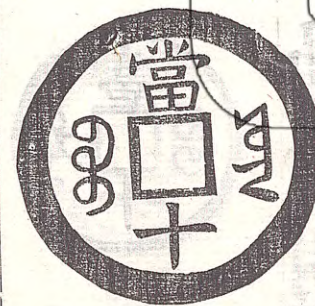
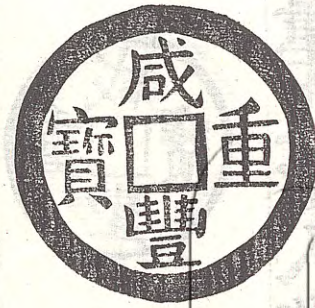
咸豐重寶當八當十錢各一品並紫銅幕文曰寶迪甘肅省鑄幼雲所收云似寶台但台灣府停鑄已久詢之戶局云確是迪字迪化州鑄未經報部旋即停罷當入者僅此一見戶局謂外省以意鑄造不報部者正多也



咸豐重寶當十錢幕文曰寶桂廣西省鑄此幼雲所收
母錢云金田之亂桂林獨未陷或亦遵鑄特少流傳耳



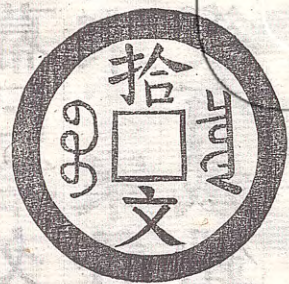
咸豐重寶當十錢幕文曰寶川四川省鑄



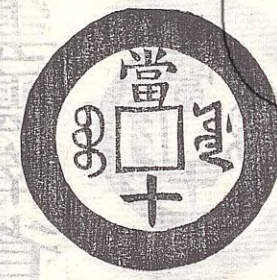
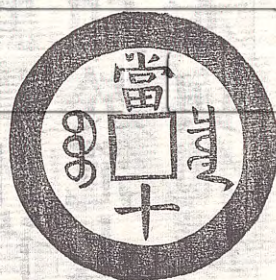
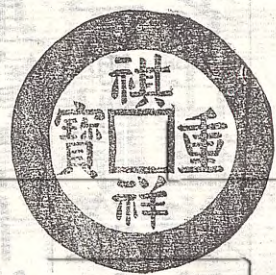
咸豐重寶當十錢幕文曰寶雲雲南省鑄



咸豐重寶當十錢幕文曰寶黔貴州省鑄制獨小幼雲
所收云黔字隆起似刻一截印於范上者會昌開元幕
各監名往往若是豐字从曲亦與他錢異



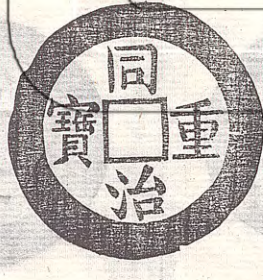
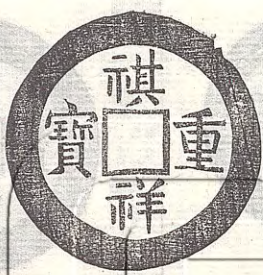
咸豐重寶當十錢寶泉局鑄幕曰拾文幼雲所收當是局匠試鑄非用品也姑附於末 案各省大錢尙不止此如有續得當入補遺同時復有鐵鉛制錢亦不載



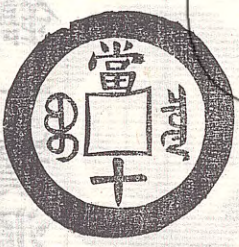
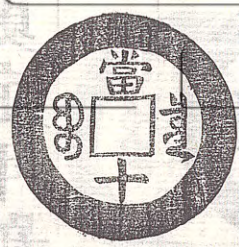
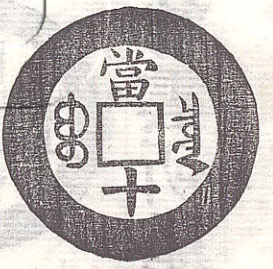
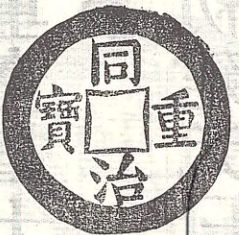
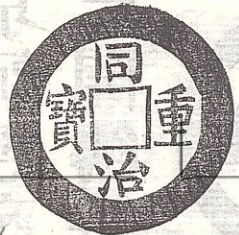
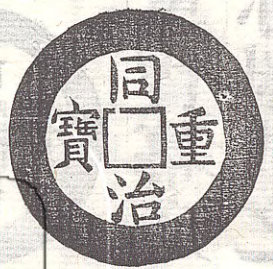
祺祥重寶當十錢一寶泉局鑄一寶源局鑄皆幼雲所收謹案

穆廟初建元曰祺祥

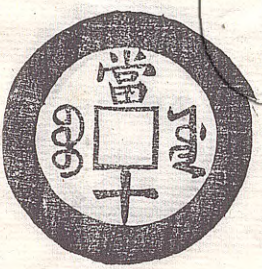
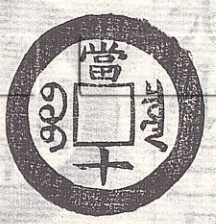
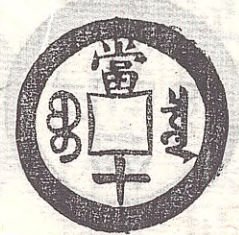
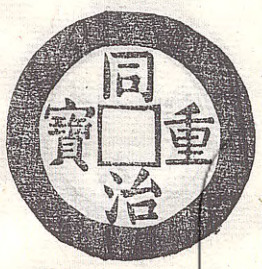
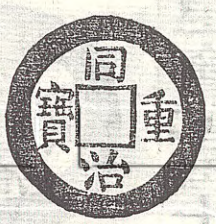
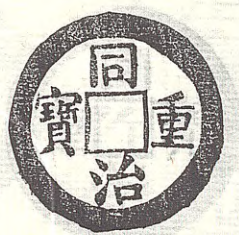
旋蹕京師經商城相國奏請更定年號始改元同治各局時已開鑄特未經行使耳

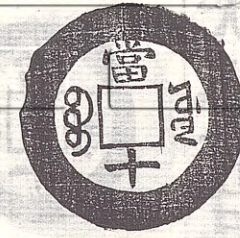
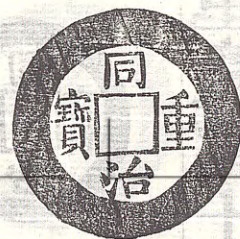
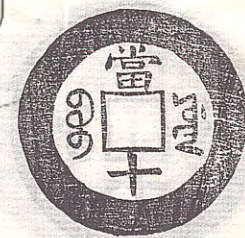


祺祥重寶幕文曰同治重寶幼雲所贈乃改元後局匠試鑄亦附載之

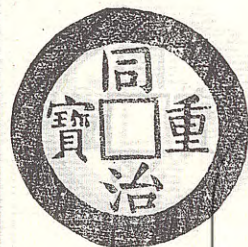


同治重寶當十錢寶泉局鑄大小五品

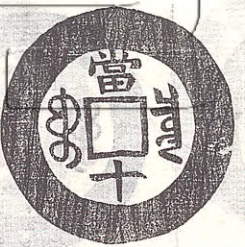
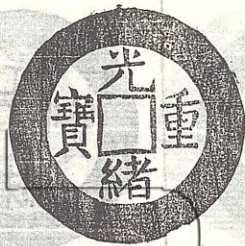




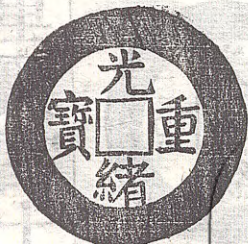
同治重寶當十錢寶源局鑄大小三品

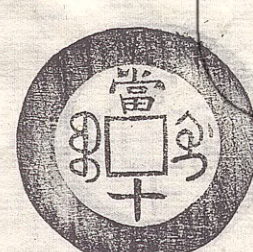
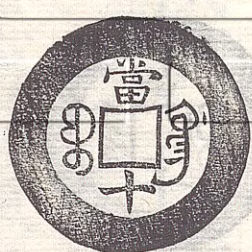
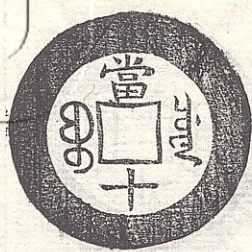
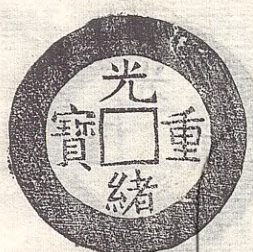
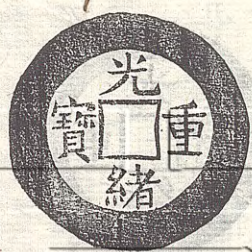
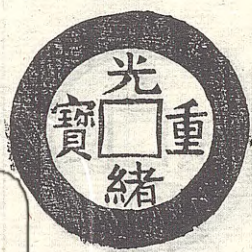
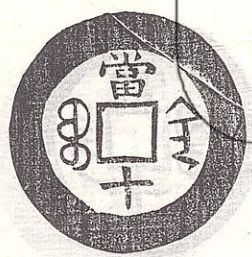
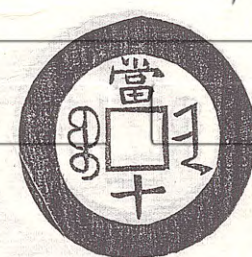
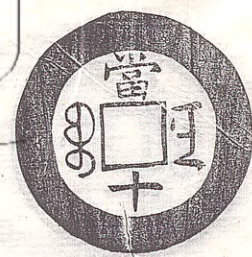
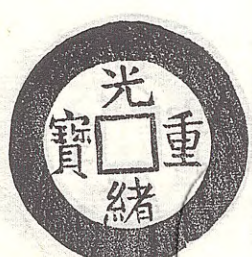
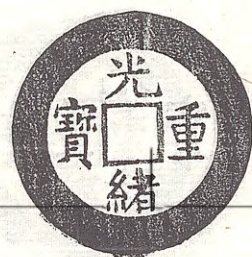
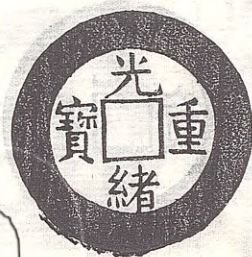


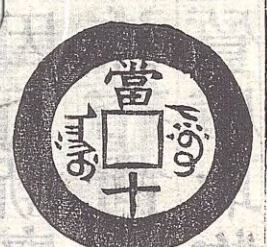
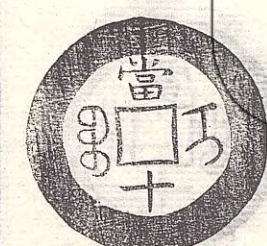
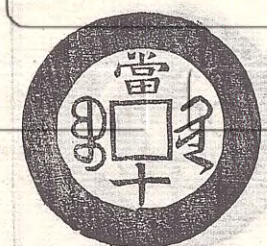
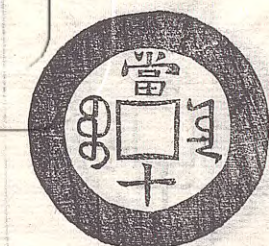
同治重寶當四錢亦僅此一見幼雲所收云幕文與寶伊相近而作當四不詳其故姑附於後



光緒重寶當十錢寶泉局鑄案每遇建元局中例精鑄制錢萬當十錢千呈進謂之萬選錢







光緒重寶當十錢幕文曰寶直寶蘇寶浙寶昌寶福寶

武鑄湖北寶南湖南寶晉寶陝寶川寶廣寶桂寶雲寶黔

寶伊伊犁阿克蘇右清文左十六種乃戶部所頒母錢

五金雜鑄故倍繳時安徽河南山東甘肅不鼓鑄俱未

頒雲南設二局一在東川府貴州設二局一在大定府許福卿工

部景福為寶泉局監督贈余各錢甚備並就詢局中掌

故輒附載之案同治初元各省亦頒有當十母錢但

未經鼓鑄或僅呈樣錢塞責故少流傳錄中未載 福
 卿云每改元鑄新錢先選至潔之象牙刻作錢樣呈錢
 法堂侍郎鑒定然後以精銅鑿成祖錢惟老啟盛齋頂帶鋪精此技印
范不其穿孔非錢局人不能鑿再用祖錢翻沙鑄
 母錢以後開鑄則悉用母錢印范頒發各省者亦謂之
 母錢外省呈進者為樣錢 咸豐朝各省初鑄當十錢
 率以二成與制錢搭配試行初尙相安未幾即仍重制
 錢當十者一枚僅當二三文因而漸廢當百當五百當
 千者所鑄尤少惟都中市肆流布尙多諸品既廢之後
 則相率持當百以上諸錢赴質庫取物質庫弗敢拒也

新疆各錢



道光通寶當五當十錢各一品幕文曰阿克蘇說見前

案乾隆朝平定新疆後葉爾羌阿克蘇烏什各城皆以
 赤銅鑄制錢殊厚重幕志地名兼用回子文俗呼普爾
 錢是也道光八年擒張格爾收復四城所鑄者幕穿上

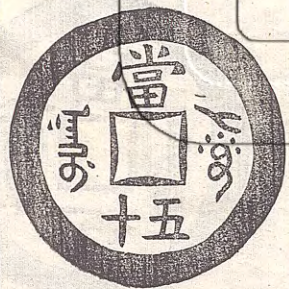
平列八年一字穿下增五字或十字固久開當五當十之先矣



咸豐通寶當五當十錢各一品幕文曰阿克蘇亦赤銅鑄幼雲所收云似取道光舊錢印范剗去八年字印以當字故次品當字直掩及外郭之半說殊近理



咸豐通寶當十錢幕文曰烏什亦兼回子文新疆鑄案以上三品幕文雖曰當五當十而制作大小一仍普爾錢之舊故面文亦不曰重寶

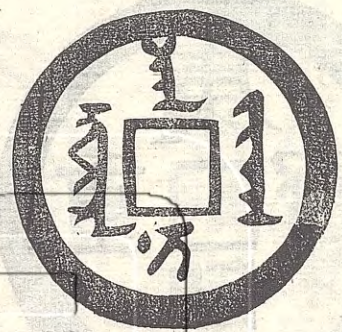


咸豐重寶當五十錢阿克蘇鑄



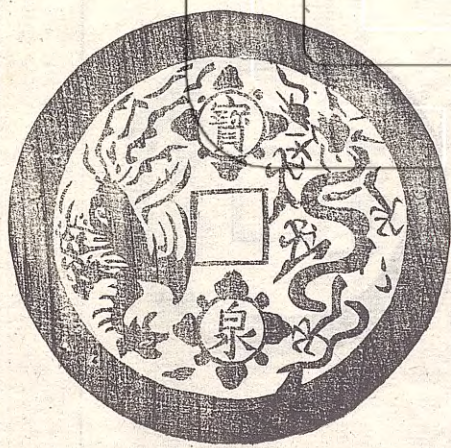
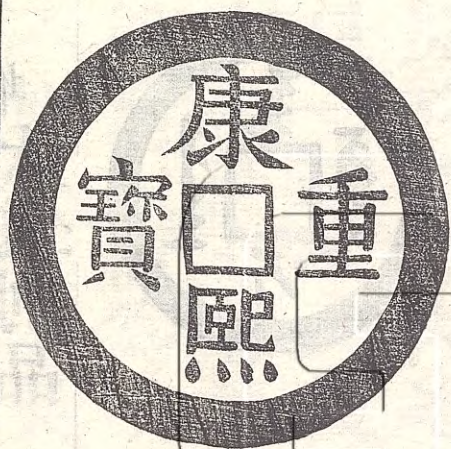
咸豐元寶當百錢亦阿克蘇鑄案新疆鑄錢無多旋
 值兵燹故傳入內地者絕少以上三品皆幼雲所收存
 之以見一斑大錢乃一時權宜之計利少而弊多李
 竹朋古泉匯亦歷舉前代大錢之失陳壽卿云米鹽瑣
 屑豈能翦大而為小遂至不便不能行於至窮微之小
 民即不便於天下矣余輯是編但詳形製他不具論

增 大錢別品

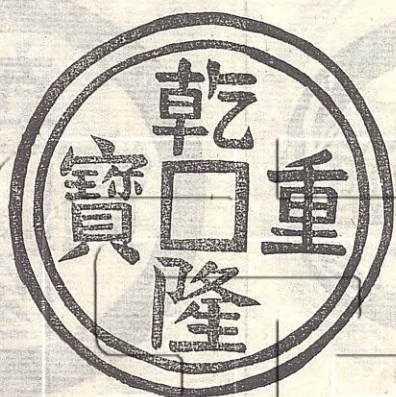


清文大錢幕文不可識幼雲所贈云舊傳為

太宗天聰錢一當小清文錢十乃啟宇遼瀋時鑄以濟
 餉糈之不足者惟不習國書此種無圈點舊文即質
 之近日通緝譯者亦多不辨實我朝大錢之權輿謹
 載之以志數典不敢忘之意



康熙重寶錢幕文一作雙龍一作龍鳳皆有寶泉二字
局呼龍鳳錢康熙朝傳鑄至乾嘉時間亦仿鑄不復呈
進矣尚有雍正通寶未及載



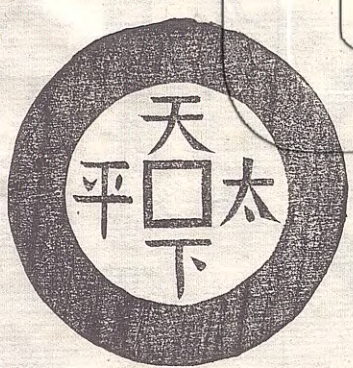
乾隆重寶錢幕文作龍鳳亦有寶泉二字面背皆重輪
稍異



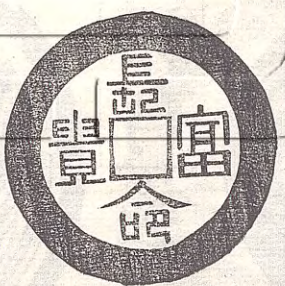
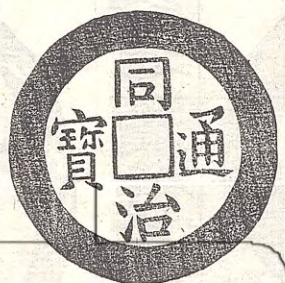
乾隆通寶錢大小二品幕文皆作龍鳳



嘉慶通寶錢幕文作麟鳳面郭有花文

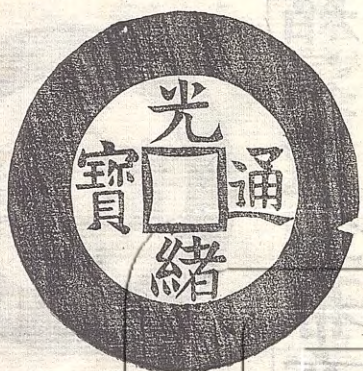
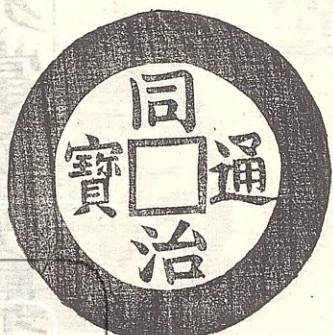


咸豐通寶錢幕文曰天下太平赤銅鑄謹案
 奉先殿上所用各祇四角皆墜此錢遇
 列聖升祔時則更易新建元所鑄者

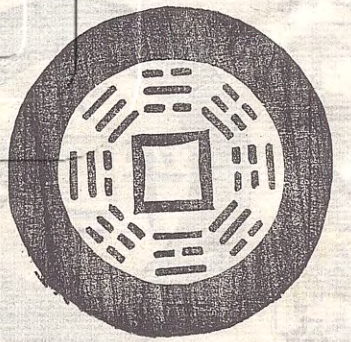


同治通寶錢幕文篆書曰長命富貴亦寶泉局鑄歲暮
 與挂鐙錢同進 內廷者此種雖近吉語類然亦由傳
 鑄非局中私造故並載之 案錢局歲十二月例精鑄
 制錢若干緡呈進謂之挂鐙錢

同治通寶錢幕文曰天下太平赤銅鑄說見前

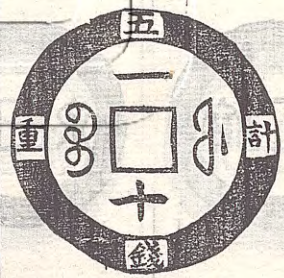
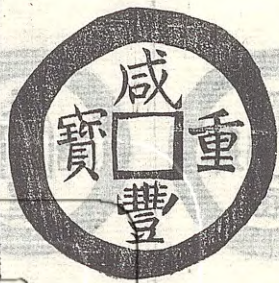


光緒通寶錢幕文曰天下太平赤銅鑄說見前

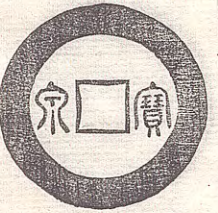
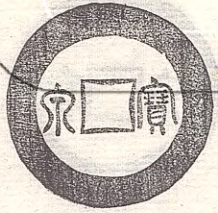
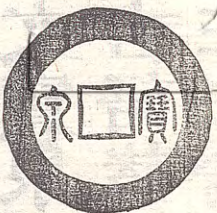
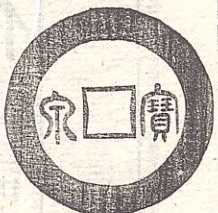
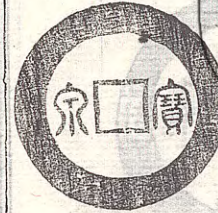
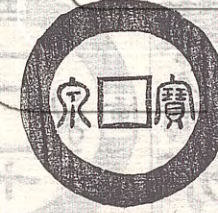
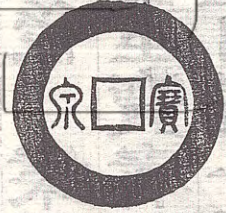
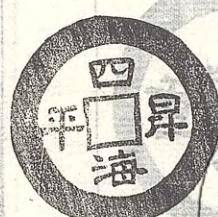
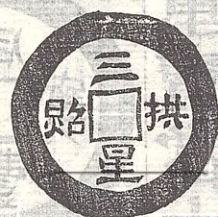
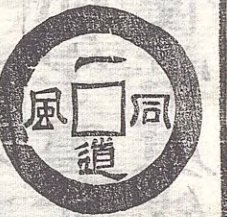


光緒通寶錢幕文作八卦 案每遇脩葺各 宮殿上
 梁時安置寶合合中皆貯此錢以上各種雖非正用品
 然亦掌故所繫故坵載卷末

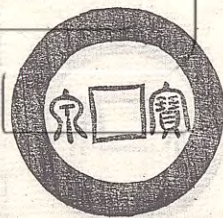
補遺



咸豐重寶當十錢寶福局鑄幕輪亦有計重五錢四字
 說見前幼雲續貽卽補載於後 案福建當一十二十
 五十錢並有通寶重寶兩種重寶者幕輪率有字新異
 可喜 胡石查尙藏有當二百者一種戶局鑄黃銅甚
 緻輪郭字畫亦隆起如虬脊自係母錢想當日試鑄未
 議行使惜原錢爲人竊去不及摹入爲憾坵志之



吉語大錢十品面文隸書幕文寶泉二字篆書傳聞為
 內廷需用之品與年終尋常吉語諸錢不同故亦坳卷
 末以廣見聞是編為譜錄而作非論錢法似無嫌並載
 也



大 清 寶 鈔

天 下 通 行

均 平 出 入

咸豐三年製

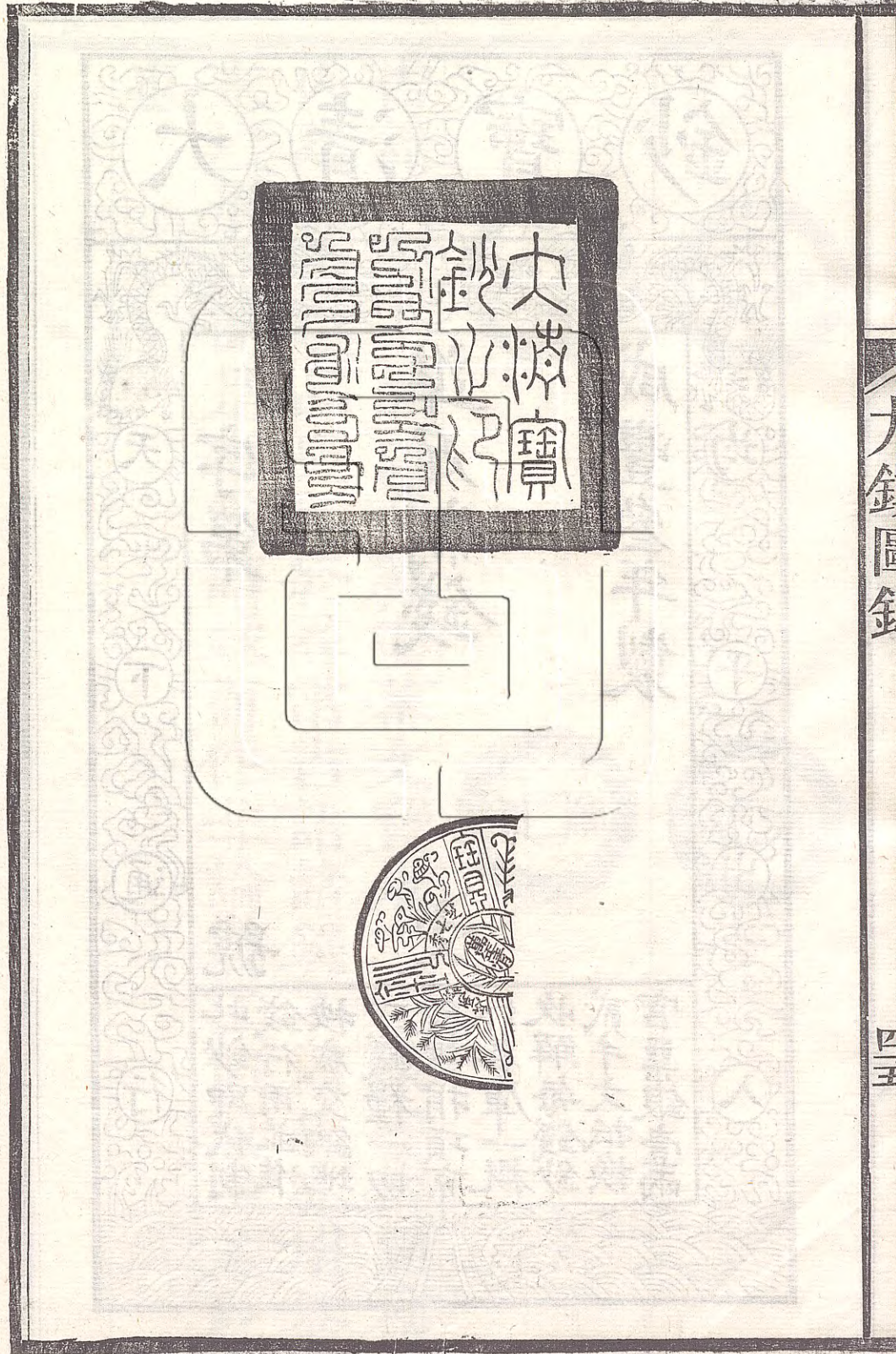
準足制錢

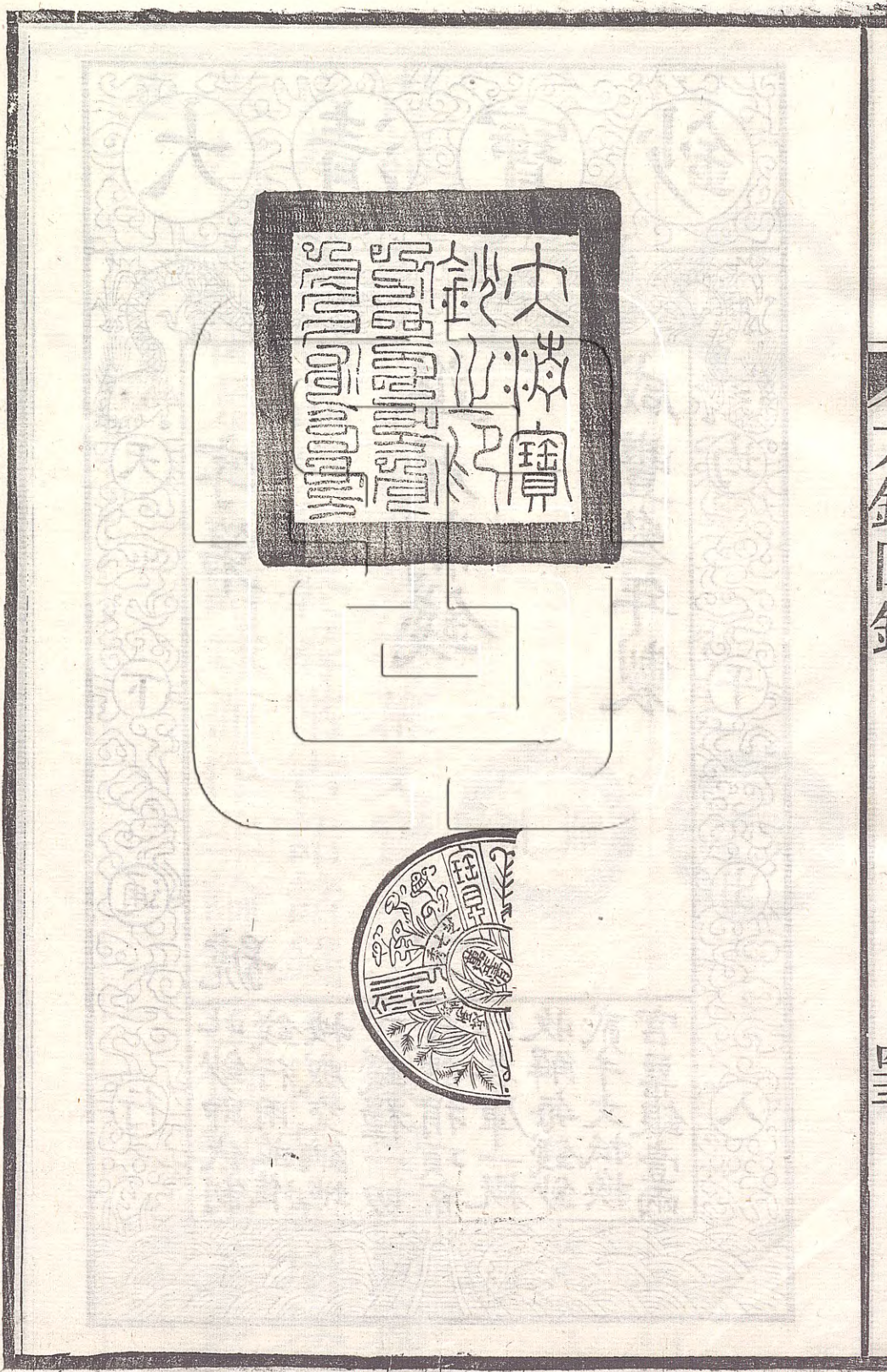
字 號

文

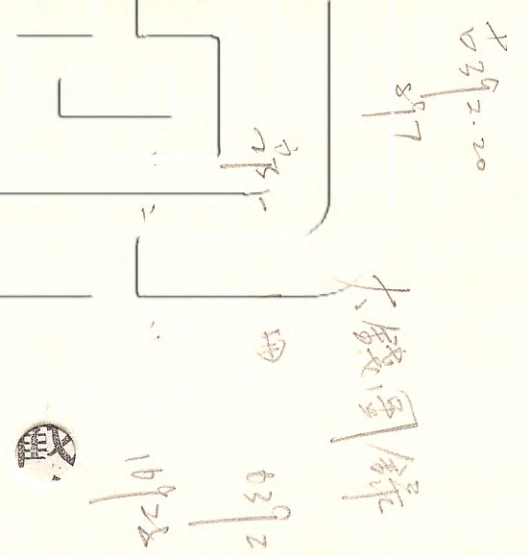
此鈔即代制
 錢行用並准
 按成交納地
 丁錢糧一切
 稅課捐項京
 外各庫一概
 收解每錢鈔
 貳千文抵換
 官票銀壹兩

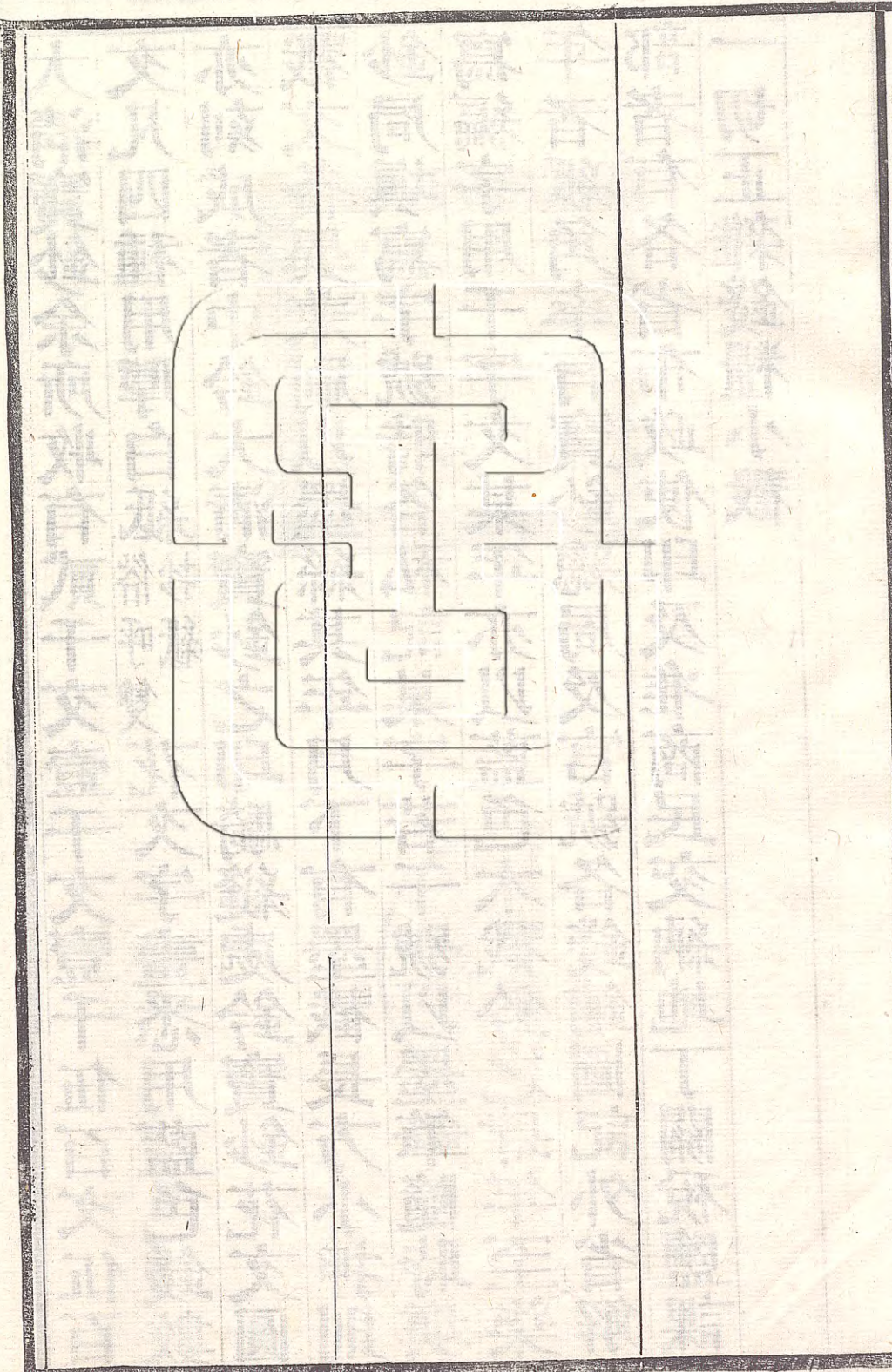
大清寶鈔余所收有貳千文壹千文壹千伍百文伍百
文凡四種用厚白紙俗呼雙抄紙花文字畫悉用藍色錢數
亦刻成者中鈐大清寶鈔之印騎縫處鈐寶鈔花文圓
戳文各異兼刷以墨絲其年月下有墨戳長方小押則
鈔局填寫字號時各私記某字若干號以墨筆隨時填
寫編字用千字文某年亦以藍色木戳鈐之肆年至柒
年者紙角率有寶鈔總局及官號各錢鋪圖記外省解
部者有各省布政使印及准商民交納地丁關稅鹽課
一切正雜錢糧小戳





大清寶鈔余所收有
 文凡四種用厚白紙
 亦刻成者中鈐大清
 戳文各異兼刷以墨
 鈔局填寫字號時各
 寫編字用干字文某
 年者紙角率有寶鈔
 總局及官號各錢鋪
 圖記外省解部者有
 各省布政使印及准
 商民交納地丁關稅
 鹽課一切正雜錢糧
 小戳





每兩比庫平少陸分

戶部
官票

咸豐
年
月
日

字第

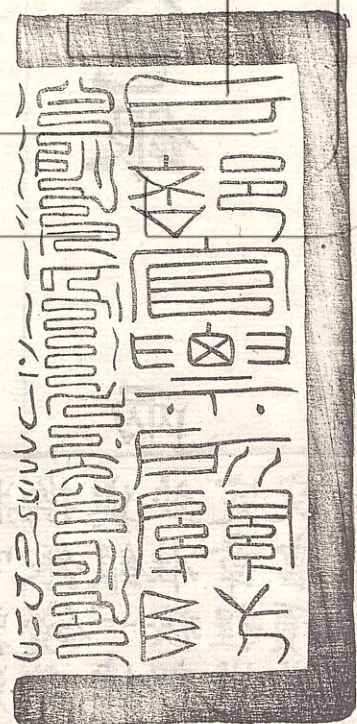
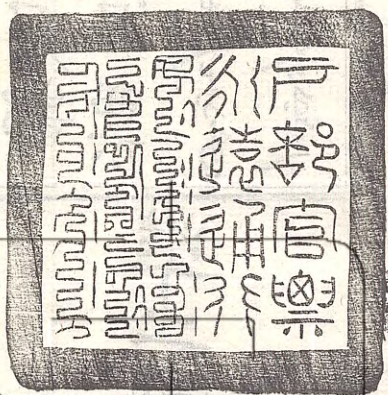
準二兩平足色銀

號

兩

戶部奏行
官票凡願
將官票兌
換銀錢者
與銀一律
並准按部
定章程搭
交官項偽
造者依律
治罪不貸

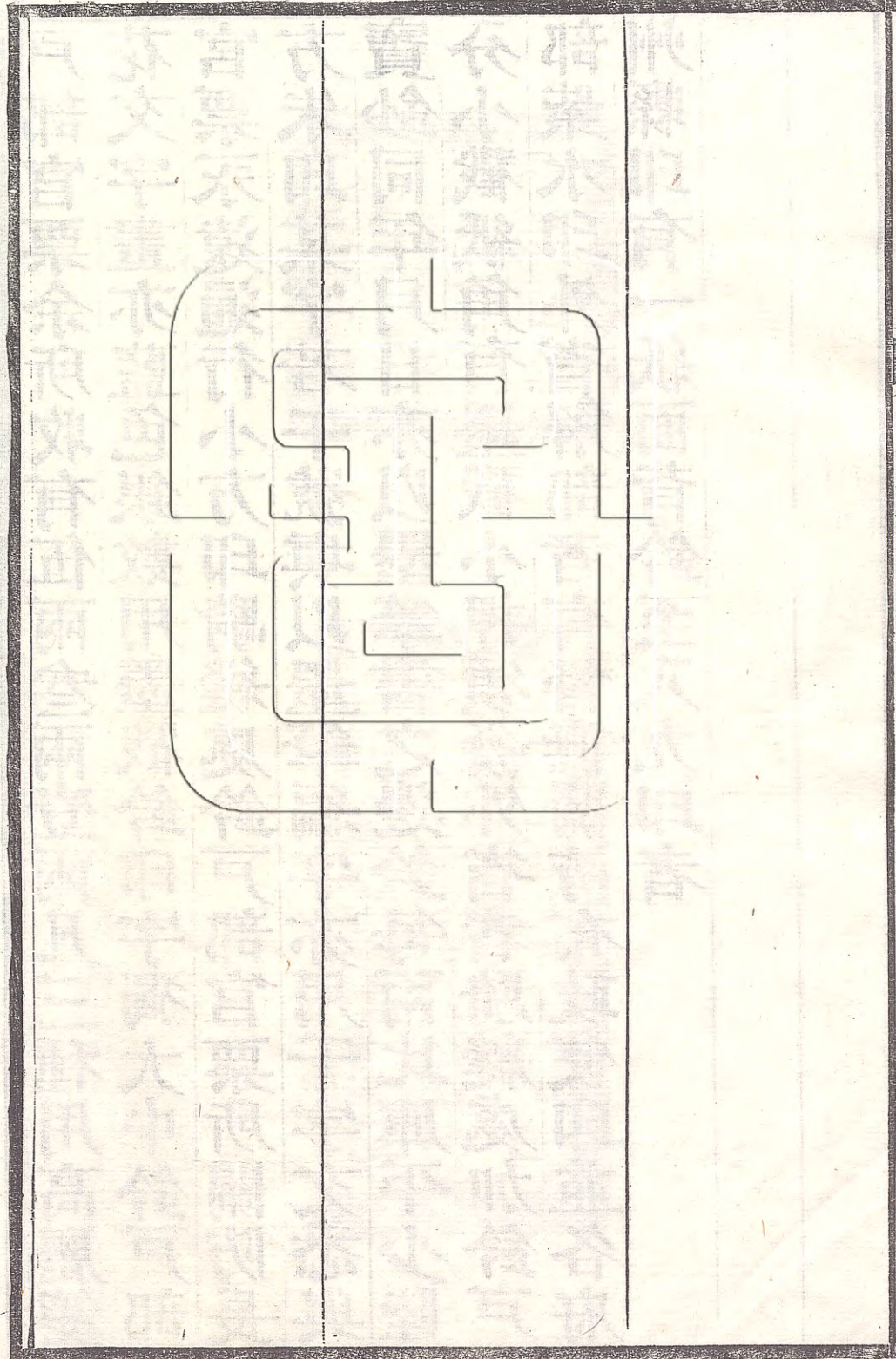
戶部官票余所收有伍兩叁兩壹兩凡三種用高麗箋花文字畫亦藍色銀數用墨戳鈐印字獨大中鈐戶部官票永遠通行小方印騎縫處鈐戶部官票所關防長方朱印某字若干號填以墨筆編字亦用千字文悉與寶鈔同年月日亦以墨筆書之邊鈐每兩比庫平少陸分小戳紙角有墨戳小押頒發外省者騎縫處加鈐戶部紫水印外省解部者有督撫關防布政使印並各府州縣印有一紙面背鈐至八九印者



增與閻丹初論鈔書

甲寅余應禮部試不第留都下丹初農部新入鈔局思變通官票寶鈔章程詢及芻蕘憶壬子夏在都時與丹初皆不主行鈔之議今則已成騎虎之勢不得不委曲求全矣

昨夕枉過談及鈔票一節怱怱未悉其詳然以數月來眾心惶惑之事一經長才殫精擘畫十日之間驟有起色聞之令人抃舞此法深恐弗行行則不僅昔人所稱十便且目前濟急之策惟恃此一物他日鄙著泉錄中當首載崇論閎議也至其流失亦有數端夜長不寐枕



上偶然思之曉起輒謬述以瀆清聽

一私造最不易禁非峻刑重賞不可明鈔所云偽造者

斬告發者賞銀二百五十兩是也聞原議卽然地方官

姑息養姦大吏尤喜博寬厚之譽法愈重愈不肯辦卽

如鴉片煙一物販賣與吸食者半天下有一從嚴議問

擬者乎鈔票以完納錢糧爲鉅款各省情形不同康足

迹未到故鄉不識南方情事以北省所見而論山陝各

省地丁只有官虧民欠而河南山東則向由糧書糧差

包納皆胥欠役欠也在官人役姦猾異常設勾結門丁

私造以欺本官勢難遽覺小民畏吏胥如虎又誰肯告

發乎稽察之法首宜熟計若並高麗箋禁止則朝鮮素

稱恭順今以一箋之微儻各關經理不善致啟隙釁黃

樹齋侍郎前車之失又安可不防

一按成完納錢糧其雜費不能盡革亦不必盡革也欲

鈔法之暢行必以交地丁爲重但錢糧之有羨耗久成

正供交鈔惟火耗略省其他費概不容省近時銀價過

昂山東州縣民間交銀一兩費至制錢三千八九百文

今旣准交官票又准以寶鈔二千抵銀一兩不必按照

市價賣銀斯民已陰受無量之福若明示科條悉裁雜

費在小民相沿已久輸納初不以爲苛今遽云當裁則

富豪巨紳喜事生監必概以一兩之票二千之鈔胥抵
作一兩之見銀南省包漕而外又添包鈔名目至北省
州縣官歲入全在地丁之餘賸乃萬金之缺頓減五千
而藩司之規例庫官庫書之津潤不能裁也裁則必多
生枝節
報銷之費簿籍之費解役車馬口食之費亦不能裁也
外此一縣捐攤各款不下百十事為數甚鉅復有上司
節壽之費大縣每節每衙
門動需數百金差事供應之費大僚過境費
者亦或數百
金學使考試之費交代分賠之費工程派捐之費案件
招解之費巨案解省覆訊經年累月不
結一案或費至數百千文以及幕友之脩
脯如山東河南刑名一席歲
需千餘金錢穀亦千金官署之度支同僚之酬酢

親朋之資助皆一概如恒如近日兵差之苦累幾不
聊生及各項捐輸為尤甚而
所入驟減一半斷乎不支勢必別思生財之道相率而
為貪矣昔先王之重祿正所以成就中材如閩吏素少
廉名非其地果有貪泉也緣汪稼門先生博一時之名
貽靡涯之害奏將閩省錢糧雜費裁革無遺州縣皆成
瘠苦辦公無力其僅於考試出賣案首者尙稱好官聞
劉燕庭布政所談甚至官遣丁役赴鄉勸民械鬥為索
贓之計一命議銀如干兩尤為異聞然則完納錢糧一
節亦宜令直省大吏各就情形籌辦但嚴定官胥阻撓
鈔法罪名聞原議不收鈔票者官擬
發新疆胥吏問擬絞候以示必用足矣此條

殊非正論但亦由閱歷得來

一外省民間交納鈔票官吏雖不敢顯拒弗收然各種挑剔刁難勢所不免若紛紛控訴則案牘太煩地方大吏亦不肯據細民一紙之詞卽置官胥於重典也惟雜費不必盡革官旣無損民亦獲益高明以爲何如一鈔票惟近京省分尙易物色如去臘官票驟昂則大宛二縣糧書購以交納錢糧也至遠省何從購求民間則更少此物惟有部頒官票寶鈔各千萬紙令各省開局與民間公平交易收其銀卽以解部然已不能徧逮通省且恐官胥私自藏匿仍照常徵收見銀至批解時

乃以鈔票二種抵交徒飽官胥之橐於民間究屬無裨此層已思有善策否

一庫貯鈔票究不宜多尤不宜久銀錢終古不磨楮幣本有昏爛之慮且久貯則雨淋地溼鼠齧蟲傷亦所難免虧空之弊或且百出各庫宜嚴定限制不許多存違者令後任據實揭報否則不肖官吏任意侵蝕庫銀去任時則以楮幣充數設有緩急之需孰當其咎一切出入之法久暫之期皆宜詳議

一鈔票行於京師猶易達之天下較難其物皆便於交官不便於私用而鈔與票又分難易也京師交官之款

既多且戶部報捐一項所收尤鉅卽市間以鈔買物有不肯收者亦可赴城坊登時首告外省鄉曲小民斷不肯因一紙之鈔頻入公門雖有准交錢糧之利而貧家小戶所交無幾不值購求卽准數戶合弁交納而購求亦不如都下之便至零星行使復不若錢票之自如錢票有鋪取錢實與見錢無異此縣之錢票攜至別縣則不行亦不能取見錢之故茲則一千之鈔必須購千錢之物若購百錢之物令賣物者繳出見錢九百人必不從其富商大賈藏鈔何若藏金金可穴地而藏千歲不朽鈔則水火皆可虞易於銷毀且民間百干以上之錢票必持赴錢鋪照對以驗

其真偽鈔之真偽無從照驗外省尤末由知孰敢多收

一旦交官驗爲偽造不但藏者頓成赤貧且將追究根

由展轉拖累稍有顧慮者必不敢貪此便宜故曰京師

行之易而天下行之難也崇通政奏令民間准持寶鈔赴官錢鋪換取錢票及當干

當百大錢以示與見錢無異王子懷少農亦云丹初則恐鈔本不敷作繭自縛且未便厚於京師薄於外省辦理兩歧建議駁之

一鈔票行於一時尙易歷之久遠綦難目前之不行患

在人疑堅以示民信則行矣足下善體民情籌畫之精

詳自無遺憾惟日久竊恐弊端叢起若鄙人所慮者寸

光之照不足盡其微也惟冀大才於立法之初卽預思

大錢圖錄

十世百世之計

一地方官誤收偽鈔處分亦宜酌定聞南方民間錢票皆係銅版其精致遠過於鈔票則作偽者必不能盡絕利之所在固醫不畏死也州縣官實無術一一辨認若誤解偽鈔處分輕則不足示懲重則亦實有冤抑權衡難得其平總之此物一旦暢銷則杜私為第一事不數日果

見即鈔已拏獲偽造鈔票人犯六名矣

一部庫及天下藩庫鈔紙宜隨收隨放封貯之項終須重銀至戶部乃造鈔總局尤不患無鈔外省解部各款總以銀多鈔少為佳或令全行解銀鈔則留於本省支

放以資流轉克勤郡王所奏廢銀用鈔銀萬不可廢也

崇通政奏謂銀鈔必須並重不必慮庫中有鈔無銀但無銀終可慮明季之鈔至中葉每

貫僅折錢二文通政所奏限定外省搭鈔解部盡取明史更究其故乎

一條意在期鈔之必行然亦宜詳慎

若驟下一令曰廢銀用鈔則天下之富民俱立成貧一寰大亂作矣即曉以銀可易鈔亦豈期月所能有成者耶此層當日未道及特識於此

一昔人之行鈔多出權宜以濟暫時之匱乏期於支款稍獲流連俟國帑充裕或量加核減或但行舊鈔不輕廢亦不貪多庶乎萬全

公事無私議况未覩原稿遽逞妄談真乃隔靴搔癢書
生過慮豈識時務目前鈔法但冀其行則軍餉急需既
易支持河工脩防亦資籌備若瞻前顧後大事何由成
乎以上十條不過率爾之詞乞付之一笑也

此稿甫脫適見崇朴山通政所奏亦極周匝特所見
稍有不同自宋元以來行鈔雖率不甚久然皆足供
一時之需未有甫行卽滯者只緣去歲開局之初不
曾通盤籌計遽爾頒發且入旗兵丁所領錢糧均搭
放此物尤急於行用條例復不詳備以致商民疑慮
利未見而害已多此時亟宜設法補救家諭戶曉務

令其信行否則愈不可問至他日之流弊再作計較
可也二月初四日錄下記

自來壞天下之事者皆官也各省大吏救官不救民以
與屬吏皆有情面不得不瞻徇州縣阻撓鈔法雖定重
罪大吏勢不肯一一參辦故欲行鈔票先須於官無損
法固宜乎嚴定事尤冀其可行否則必難免牽掣特省
分遠近不一且大半被兵與辦理防堵之區比通行知
照及鈔紙周徧天下已在一二年之後能永遠遵行無
弊斯固國家之福也此時急則治其標京師自西南
囊括而歸旗民生計至艱部庫尤竭蹶萬狀補救之術

轉移之權惟賴乎此足下博采眾論別出心裁自能使
市肆通行無滯何待鄙人饒舌乎緣猥承謬獎並召飲
細商遂不辭瑣瀆今先濟一時之急毋卹其他亟宜明
示五城凡京師各項捐輸及交官之款悉令搭收鈔票
不收者治以應得之罪去年官票之不行卽敝鄉茶商
持向崇文門納稅不收因而各
商疑至崇通政所奏民間行用鈔票則任其隨時價長
落商民借領不必限定五家環保不必定由五城轉發
寬以一年之限再行歸本亦尙近情數月之後商民皆
深信弗疑鈔法必日形其暢由中達外愈行愈遠矣各
省地丁間亦有舊例交錢者每銀一兩交制錢二千餘

文地方官易銀批解在當日頗多需潤近時則賠累異
常此等州縣必更願收鈔解鈔但合天下計之不過十
之二三所謂宜各就情形籌辦也前書尙有未盡再以
布陳

昨暢聆高論並細讀各條例殫思竭慮周妥精詳無微
不至曷勝欽服就中凡已放未放之鈔票概令加印罪
名小截一條官吏阻撓不收
者從重治罪尤爲行鈔關鍵匪此不能

取信於民也此外大主意在思去路惟有商運一策但
官運民銷乃劉晏行鹽之法其事易曉商運官票則各
省銀價正昂頗可獲利至寶鈔係大書制錢若干文利

果何在以十日前鈔價而論制錢六百卽買鈔一千其利厚矣若各商聞風踵至則鈔價日昂必須一千之錢方購一千之鈔載赴各省銷售聽其任意加價乎令其公平交易乎聽其加價恐姦商百計居奇小民何樂而購此若公平交易一千之鈔只賣一千之錢則商人出重資經營數月並無利可贖暗中之賠折已多加以長途車馬之費旅店食用之費尤不可勝計商人豈肯嘗試耶運鈔一節康尙未悉其所以然望開茅塞爲幸康意蓋一面准各商販運一面卽准各商借領照崇通政所議但取三厘之息復寬一年之期仍展十月之限庶

各商目下無須成本轉運卽獲實利豈不更形踴躍不但票行而鈔亦行惟各省近已開徵比章程奏定商販流通約在兩月之後稍遠之處上忙錢糧業經完納諺云有錢不買半年閒各商必須候至下忙方能獲利遷延日久目前之利亦覺稍微然此時但冀其販運以重鈔之價要言不過四字曰務令其行不能作許多顧慮他日其利孔多自必爭相購運斯鈔法果大成矣

崇通政奏令限定搭成解鈔其全行解銀者不收非此不能重鈔也但目下部庫一空司農終日延領假如各省忽紛紛解到見銀大可濟急戶部肯駁回原

省令其換鈔否思之失笑此戲言以佐軒渠毋介意也

昨早一箋已青及否孤枕無寐復思及高見謂當千當五百二種大錢有礙寶鈔非奏停不可但此議出自巡防王大臣未必遽允卽允亦恐蹈治一經損一經之誚此時鈔法果否暢行尙無把握若行而不暢則大錢又已停鑄更少一補救之物似非萬全不如暫留大錢以便私用廣行寶鈔以便交官判爲兩途不使侵灌俟寶鈔流通商民咸利然後請停鼓鑄似乎兩得否則請將每月鑄當千當五百之銅悉行加鑄當百大錢錢無嫌

於多又便零星行使助鈔法之所不及此議盍與李午山給諫更熟籌之若去夏甫鑄大錢之初寶鈔尙未定議彼時卽多鑄當五百以下諸錢且精益求精使不能作僞則一年以來所行已多亦足供一時之支發寶鈔一物尙可稍緩製造雖行錢不及行鈔之省便而錢究易於通行惜乎只鑄當五十當十兩品籌辦已遲矣愚見偶及再述以質高明

頃見某司業請鑄金寶銀寶一摺云將金銀悉鑄爲大錢面刻咸豐年製字銀錢背橫刻銀寶二字直刻當五兩當十兩當五十三字以紋銀一兩五錢造當

五兩一枚以銀二兩造當十兩一枚以銀三兩造當
五十兩一枚當制錢一百三十千使用金寶背橫刻
金寶二字直刻當銀百兩四字以赤金一兩造當銀
百兩金寶一枚當制錢二百千使用市間只許以金
寶銀寶換兌銅錢寶鈔凡民間金銀一概禁止令其
呈繳官府照數承領金寶銀寶方准使用民間不能私鑄乎
其以銀錢私換錢鈔者治罪謂此以少當多之法民
必樂從且請早降 諭旨徧帖謄黃並令外洋與
中國互市一體遵照云云紕繆糊塗至於此極大亂
之道無過是者矣 民間用銀必須五兩十兩况赤

金一兩少或易銀十五兩多或至十七八兩今以三
兩重銀寶當銀五十兩當錢一百三十千則銀十五
兩卽抵銀二百五十兩抵錢六百五十千矣卻以直
銀十五兩之赤金一兩爲金寶僅當銀百兩當錢二
百千當百兩者抵錢二百千當五十兩者則抵錢一百三十千亦自相矛盾之至

聞友人云魏默深亦有此說何其謬也

泥淖致數日未晤行鈔章程想已詳定念甚念甚至搭
交五成之說在立制之始自不容稍涉游移但須按省
分之遠近示以限期不能一律且通都大邑尙易購求
山僻小縣那得許多鈔票胥役必從而勒索甚至增出

代買鈔票使費名目小民未獲行鈔之利先受行鈔之
害矣此層似不可不慮鄙意宜以三年爲期於則例中
添註一條云三年之內僻小州縣恐鈔票尙不能徧給
須聽從民便或搭收三成四成均可務令各省大吏體
察情形酌辦如此略事通融庶姦胥無所施其技耳聞
克勤郡王復上章奏未知有何高見又聞有許旗員自
王貝勒以下借俸概行發鈔者康思官借何如商借此
物借入市僧之手伊等惟利是漁必能設法行使且市
肆亦易於相信一通百通其利溥矣若各官所借俸銀
概係此物市間存鈔愈多價直恐愈不可問况旗員借

支鈔票必皆以濟至急之需勢又將減價出售於鈔法
彌有妨礙總之此物要計日後之暢行勿貪目前之多
發如他日不免壅滯則此時轉以少發爲佳多則愈不
直錢少則爲害尙淺此論雖似齟齬卻亦近理不審以
爲何如

近日順天保定各府均已開徵其無災處所官胥必
有貪此便宜來京購鈔者鈔價可冀其稍增但願商
販聞風興起則事有轉機加以足下手訂章程至詳
且盡一時張帖通衢商民羣然相信則裕國便民
不獨康一人以手加額也

商運一層目前最要之著寶鈔雖無甚利官票則以制錢二千買銀票一兩外省銀價近日皆在二千三四百文以上獲利良多且各商載銀而歸何如載票運費既省兼少意外之虞所慮者商人不敢輕試須以官運開其端也轉瞬天下蕩平富家藏銀漸出外省銀價必然日落若每兩在制錢二千以內販運者便無利可牟定然裹足仍恃官運民銷收其銀卽以解部不許留於本省方爲全策大約官運商運終須相輔而行耳

官運則鈔與票皆可行商運則不肯運鈔只肯運票

票暢矣而鈔仍不暢官運則但冀其消不謀其利官票一兩僅賣制錢二千民間獲益實多商運則一兩之票必須賣一兩之銀方有餘賸

皆指目下銀價而言

小民以

錢買銀再以銀買票所省安在不過輸官時少傾鎔火耗費耳惟小民交寶鈔二千卽可抵錢糧銀一兩至省至便勢必樂買商人之鈔不樂買商人之票而商人運鈔又實無利可圖益於此者必有損於彼若專恃官運則商賈終不信行市肆便形窒礙都城見發之鈔票百數十萬仍不能流通尤爲可虞信乎救荒無善策矣此事在平日尙覺其小目前則係軍國

重計

搭放兵餉甚多軍營亦半恃此物如不行尙可問耶

雖日度支而運數關

焉惟有盡人事以聽天命所恃者我朝

聖聖相承深仁厚澤二百餘年爲三代以來所未有斷

不至如杞人之私憂也

早間枉過承示大著行鈔票三議不但字字中肯且一片救世婆心逐字流出欽佩無似已屬舍姪代膽奉上官運一節見解相同目前舍此更無辦法而鄙意尤以在籍京員經理爲妥若由京派員前往一出都門卽不免以星使自居復未必人人皆有節操一切車馬供億之費勢必仍取之州縣州縣必仍取之民間其僕從需

索滋擾尤屬難免至見在商運尙不敢恃且商人惟知求利姦胥必又從而招致之與其零星售之於民爲日孔長獲利較少不若悉數售於官胥爲快然則此物又徒爲官胥中飽官胥再從而勒價轉售流弊殊多此勢所必至之事試問一省有幾箇好官乎其官運章程第一嚴禁賣與官胥逮乎運路旣開民間多有此物則姦胥不能勒賣商販更可流通至解部及貯庫之款終須以銀爲重顧名思義是日行鈔鈔之利在行不在存貯也

來示具悉手摺亦屬舍姪續鈔附上官運一事聞去冬

王雁汀中丞亦思及此細心辦事者所見略同惜乎辦理已遲茲事當日開局時卽應籌畫此時各省錢糧早已開徵逮會議章程奏准刊刻再派員運票出京爲期斷不止一月京使每至一處必須騰發告示分布四鄉又非一日所能周徧鄉民囊無見錢比湊集入城陸續購買快者亦須十數日竣事使者所到不過數處已屆停徵之期矣卽以最近之直隸而論一百四十餘州縣何術徧及乎停徵之後小民復少餘資預購此物留待下忙輸官之用仍不免胥役包買包納諸弊總之凡事不謀之於始倉猝試行徒令後來者補苴喫力且外省

再失此開徵機會愈覺無從著手良可浩歎也

此事經理得人則上足濟國家一時之急下亦有便於民否則但供官胥之中飽民間旣不知鈔票爲何物 朝廷歲入之三四千萬金又半成楮幣暗中虧折實多來示所謂行冥鏹於陽世宜乎宋元以來旋作旋廢也惟目前勢不能中止急須設法疏通實作一箇行字俟逆匪就平帑項充足再熟計深思或停或減可耳

自來行鈔利少弊多然弊皆在數年之後此時惟有先去其太甚者若云萬全恐聖賢亦無此術又無論

我輩矣我輩蒿目時艱特視在事諸公稍肯用心猥
蒙詢訪雖不在與聞政事之列而一知半解輒不憚
煩瀆概以縷陳

頃丹初過談云一傳眾咻事多阻撓恐徒耗廿餘日
心血相對歛歔者久之至鈔局議覆崇通政所奏一
摺不思運票出京但限搭成解部並云外省無鈔票
之處不難赴鄰省購買云云尤屬信口之談深恐不
肖官胥轉以此為勒索小民之具矣都門市肆既已
驚疑外省鄉民又將擾累稍有遠慮者得不搔首喚
奈何耶十五日鐙下又記

三日不見未知條例已呈堂否念念康思近日有鈔之
處惟患其不行如都城市肆是也凡以鈔買物者或堅
執不收或倍昂其價或竟以貨盡為詞有戲呼為吵
票者殊謔補

救無術但有運之外省一策而外省無鈔之處又患其
必行官胥不收定以重罪加印小截無慮阻撓矣轉恐
官胥以此藉口向民間百計誅求非票不收則到處騷
動為今之計必應如康前議許民交不許官勒交速於
告示中添註一條凡僻遠州縣尙無鈔票地方務令聽
從民使嚴禁官胥迫索違者准人首告懲處庶幾消患
未萌至足下所慮謂一意遷延弗思變計但圖搭放罔

顧流通恐將來兵餉盡成楮紙博一餐之飽而不得勢
必鼓譟潰散尤遠事之足憂者視病民病商爲尤甚黃
樹齋而後又出一王子懷少農矣子懷爲做邑先達憂時最切然公事不敢
阿家子遠兄云凡金銀銅錢皆天地菁英之氣蘊之久
而乃成又經鑪冶製造費許多人巧天工方能行之久
遠鈔票不過一紙之費不終日而可得千萬卽欲以抵
千萬金錢其事太易似只可權濟一時不然 國初亦
嘗行鈔矣胡不著爲永遠之令耶

前箋書就適奉惠簡知前議尙可商甚慰甚慰昨出城
與家遠兄細談亦云南北情形迥乎不同便鈔局之設

丹初議派京員運票赴各省立便鈔局

宜於北不宜於南卽以所到之浙

江而論催徵錢糧往往糧書擡櫃赴各鄉按戶索取應
交數百錢者亦多作數次輸納勢不便於買鈔交鈔且
南省胥役之狡十倍北省官或畏事其弊止於中飽然
不畏事者已多况在胥役有不藉端詐擾者乎非上而
魚肉鄉民卽下而毆傷胥役訟獄繁興鬧漕而外又將
鬧鈔總須各省各就地方情形辦理也但外省大吏如
十年前之蔣礪堂陶雲汀林少穆諸制府已杳不可得
諸公素有膽識又周知民隱必善奉行卽有不可行者
亦必能剴切上達若奉到部文不加體察率爾通飭合

省官胥照辦恐未裕國而先病國行鈔一事康始終未敢埒和良以此耳

頃聞子懷少農復有籌商運發鈔本之奏請以半年為期俾積存大錢以供換取蓋有本之鈔易行無本之鈔難行不待煩言而解者此議在立制之始即應籌及今已數月之久都下鈔紙過多部庫復如懸磬籌款實屬不易而目前市肆情形又幾於不可終日商賈皆視鈔法為畏途職官兵丁所得者大半皆鈔孰不亟於行使爭端紛起訟牘滋多以國家一千之寶鈔不過抵民間五百之私票尙復成何事體乎

子懷乃倡議之人眾怨攸歸其情自迫惟未見原奏

聞所陳瑣屑偏重利商謂州縣收鈔於商與收鈔於民無異准商人特票赴各州

縣傾鎔錢糧之銀號取銀且自請嚴議以謝天下語尤失當

硃批訓飭宜矣旋調任兵部至王雁汀中丞就陝西情形籌

辦者亦主有本之鈔准赴錢局取錢以大錢制錢各半發給寶鈔二千抵銀一兩官票一兩則按市價取制錢二千四五百文不必照部中只作二千錢之議此層尤權變得宜云收放均以二成試行凡廉俸應扣留之銀即作為鈔本設法購買銅鉛加卯鼓鑄大錢制錢以供支放各屬坐支之款概令扣銀解司違

者參處俟官民稱便再將成數逐漸增添或有窒礙
隨時體察酌改總須令民間視鈔票與銀錢無異其
相寶貴卽銀價亦可漸平不獨留交官項空出空入
云云其籌畫頗覺通達但未知部議云何凡事須先
思其害勿遽貪其利庶不至利少而害多耳余雖無
官守言責而日擊時艱每抱隱憂亦曾世受 國恩
敢視如秦越耶三月旣望夜窗又記

姪恩綬校字

大錢鈔票非日用飲食之道故前代皆弗克久行識者
病之但理財節用端在平時逮國帑已空百用孔迫承
其後者須濟一時之急設身處地舍此亦殆無他法惟
豫籌深慮勿倉猝試行庶幾補苴目前不至利未形而
弊叢集有治法尤賴治人也若海宇晏安民康物阜斷
無有議及此者君子平情論事於大錢鈔票有餘慨焉
光緒二年夏五康再識

