

楊門傳



Handwritten text in a cursive script, likely a letter or document, written on the left page of an open manuscript. The text is dense and fills most of the page.

Handwritten text in a cursive script, likely a letter or document, written on the right page of an open manuscript. The text is dense and fills most of the page.

Handwritten text in a cursive script, likely a historical document or letter, spanning the left page of the manuscript.

Handwritten text in a cursive script, likely a historical document or letter, spanning the right page of the manuscript.

Handwritten text in cursive script, likely a list or account. The text is written in a dark ink on aged paper. It begins with a date-like entry: "1794年12月20日". The entries are separated by horizontal lines and include various numerical values and possibly names or locations, though they are difficult to decipher due to the cursive style. The text appears to be organized into columns or rows, possibly representing a ledger or a list of items.

Handwritten text in cursive script, continuing from the previous page. It contains several lines of text, including what appears to be a date "1794年12月20日" and various numerical entries. The text is written in a dark ink on aged paper. The entries are separated by horizontal lines and include various numerical values and possibly names or locations, though they are difficult to decipher due to the cursive style. The text appears to be organized into columns or rows, possibly representing a ledger or a list of items.

Handwritten text in a cursive script, likely a list or account. The text is written in a dark ink on aged paper. It begins with a long horizontal line, followed by several lines of text. The script is highly stylized and difficult to decipher. There are two horizontal lines separating the text into sections.

Handwritten text in a cursive script, continuing from the previous page. The text is written in a dark ink on aged paper. It begins with a long horizontal line, followed by several lines of text. The script is highly stylized and difficult to decipher. There are two horizontal lines separating the text into sections.

Handwritten text in a cursive script, likely a letter or document, written on the left page of an open manuscript. The text is arranged in approximately 12 horizontal lines, flowing from right to left across the page. The ink is dark and the script is highly stylized and connected.

Handwritten text in a cursive script, likely a letter or document, written on the right page of an open manuscript. The text is arranged in approximately 12 horizontal lines, flowing from right to left across the page. The ink is dark and the script is highly stylized and connected.

Handwritten text in a cursive script, likely a letter or document, written on the left page of an open book. The text is dense and fills most of the page.

Handwritten text in a cursive script, likely a letter or document, written on the right page of an open book. The text is dense and fills most of the page.

Handwritten text in Arabic script, consisting of approximately 10 lines of dense cursive writing.

Handwritten text in Arabic script, consisting of approximately 10 lines of dense cursive writing.

Handwritten text in a cursive script, likely a letter or a page from a manuscript. The text is written in a dark ink on aged, yellowish paper. The script is highly stylized and difficult to decipher, but it appears to be a continuous flow of characters. The lines are roughly horizontal and fill most of the page.

Handwritten text in a cursive script, continuing from the previous page. The text is written in a dark ink on aged, yellowish paper. The script is highly stylized and difficult to decipher, but it appears to be a continuous flow of characters. The lines are roughly horizontal and fill most of the page.

Handwritten text in a cursive script, likely a letter or a page from a manuscript. The text is written in a fluid, connected style across approximately 12 lines.

Handwritten text in a cursive script, continuing from the previous page. The text is written in a fluid, connected style across approximately 12 lines.

Handwritten text in a cursive script, likely a letter or document, written on the left page of an open manuscript. The text is arranged in approximately 12 horizontal lines, flowing from right to left across the page. The ink is dark and the script is highly stylized and connected.

Handwritten text in a cursive script, likely a letter or document, written on the right page of an open manuscript. The text is arranged in approximately 12 horizontal lines, flowing from right to left across the page. The ink is dark and the script is highly stylized and connected.

Handwritten text in cursive script, likely a letter or document, starting with a large initial letter.

Handwritten text in cursive script, continuing the letter or document, with several lines of text.

Handwritten text in cursive script, continuing the letter or document, with several lines of text.

Handwritten text in a cursive script, likely a historical document or letter. The text is written in a dark ink on aged paper. The script is highly stylized and difficult to decipher without a key. The lines are closely spaced and run horizontally across the page.

Handwritten text in a cursive script, continuing from the previous page. The text is written in a dark ink on aged paper. The script is highly stylized and difficult to decipher without a key. The lines are closely spaced and run horizontally across the page.

Handwritten text in Arabic script, consisting of approximately 12 lines of cursive script.

Handwritten text in Arabic script, consisting of approximately 12 lines of cursive script.

Handwritten text in a cursive script, likely a historical document or letter. The text is written in a fluid, connected style across approximately 12 lines.

Handwritten text in a cursive script, continuing from the previous page. The text is written in a fluid, connected style across approximately 12 lines. There are some faint markings or bleed-through visible in the upper portion of the page.

Handwritten text in Arabic script, consisting of approximately 12 lines of dense, cursive writing.

Handwritten text in Arabic script, consisting of approximately 12 lines of dense, cursive writing.

Handwritten text in Arabic script, likely a religious or historical document. The text is written in a cursive style and spans across the top of the page.

Handwritten text in Arabic script, continuing from the previous page. The text is written in a cursive style and spans across the top of the page.

Handwritten text in a cursive script, likely a letter or document, written on the left page of an open manuscript. The text is dense and fills most of the page.

Handwritten text in a cursive script, likely a letter or document, written on the right page of an open manuscript. The text is dense and fills most of the page.

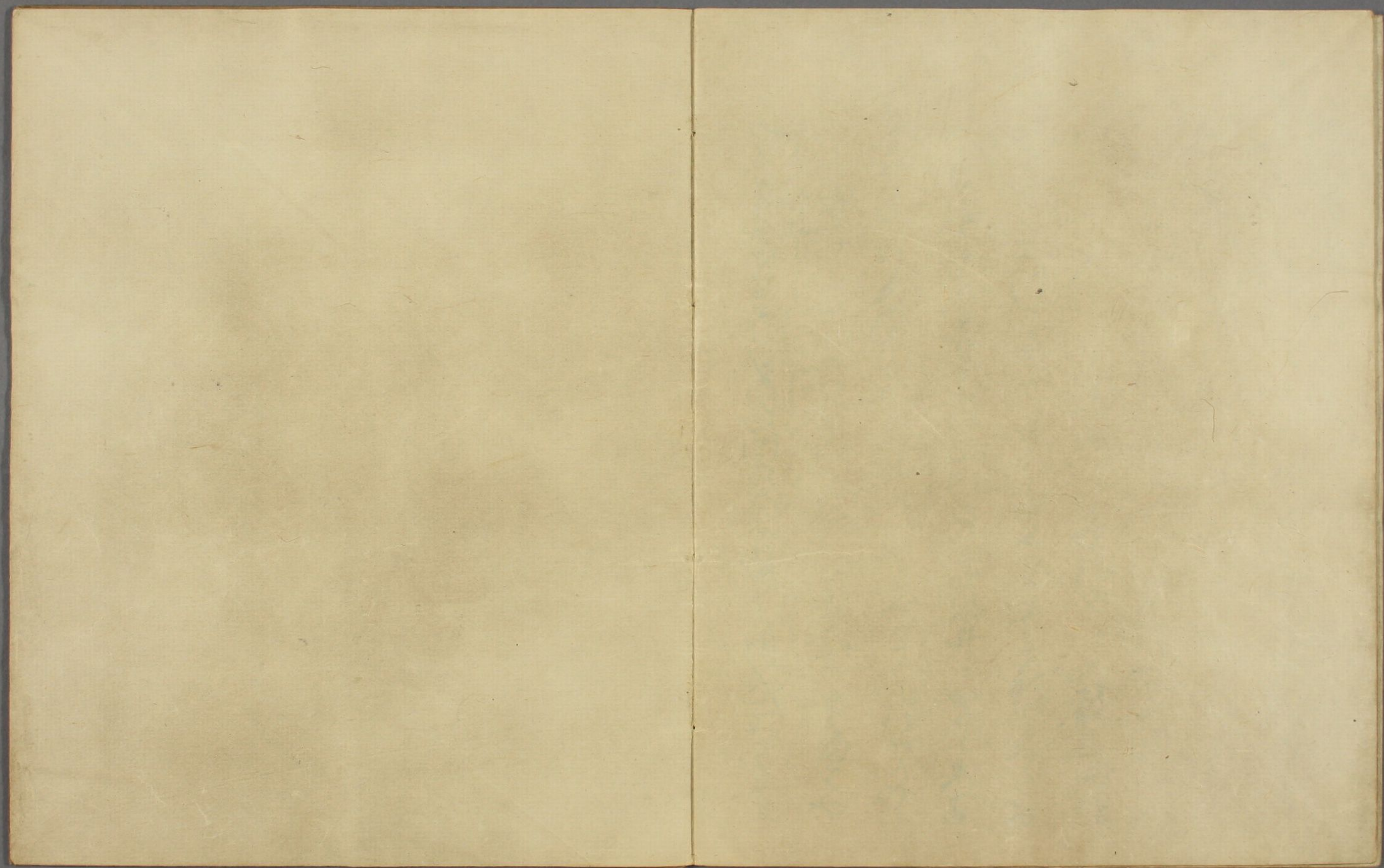
Handwritten text in a cursive script, likely a letter or a page from a manuscript. The text is written in a fluid, connected style across approximately 12 lines.

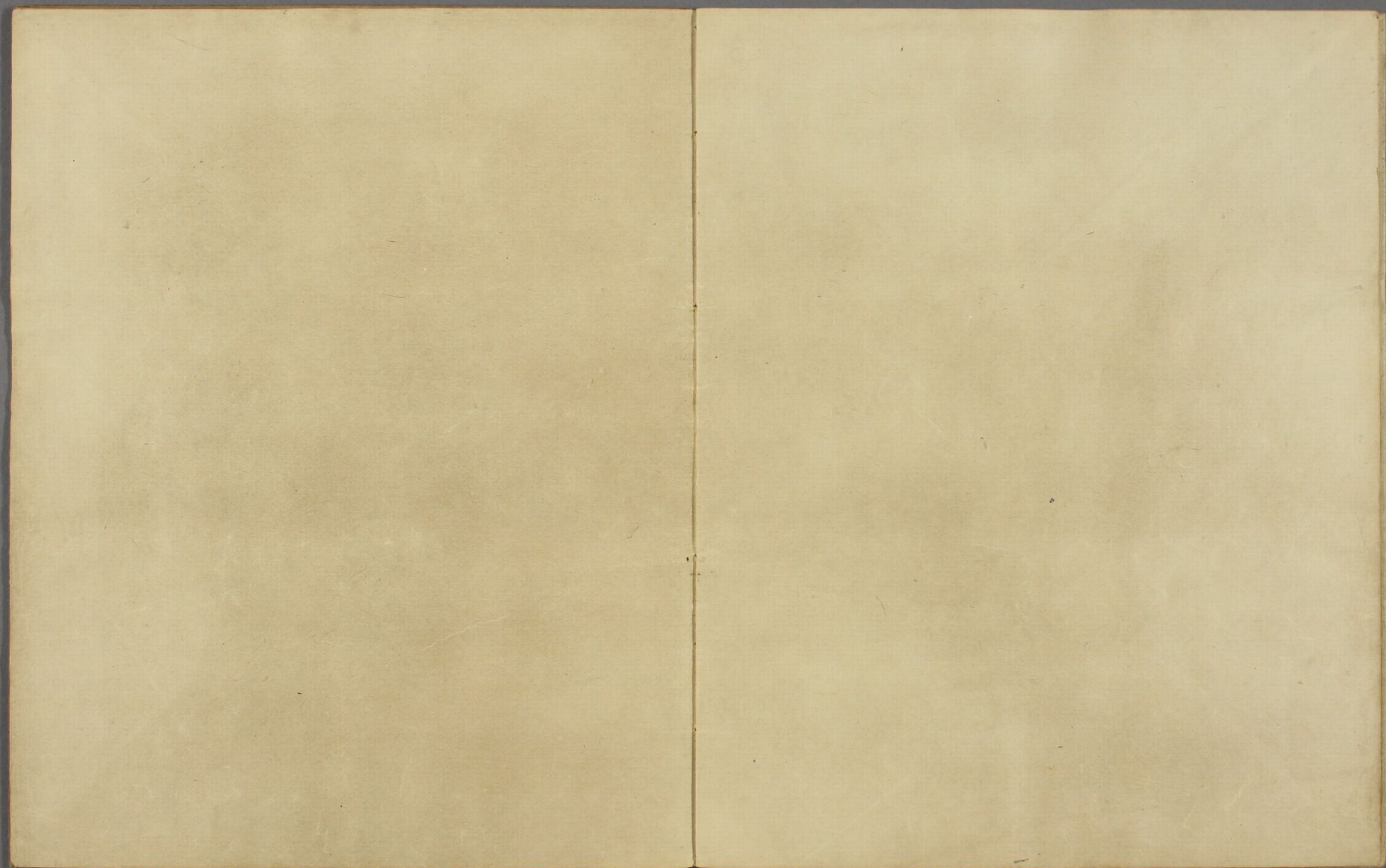
Handwritten text in a cursive script, continuing from the previous page. The text is written in a fluid, connected style across approximately 12 lines.

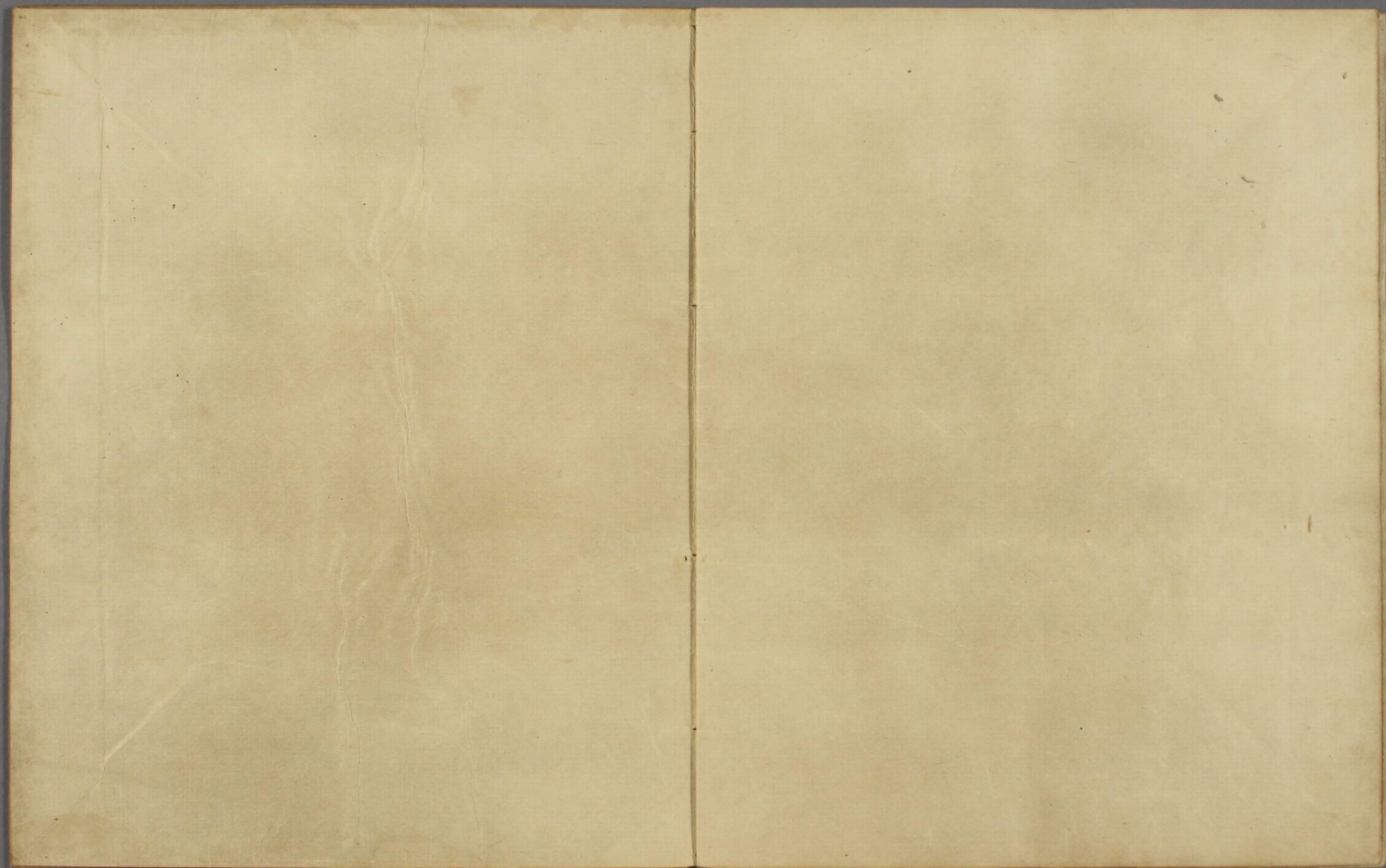
Handwritten text in a cursive script, likely a musical score or a list of notes, spanning the right page of the manuscript. The text is written in dark ink on aged paper and consists of approximately 12 lines of dense, flowing characters.

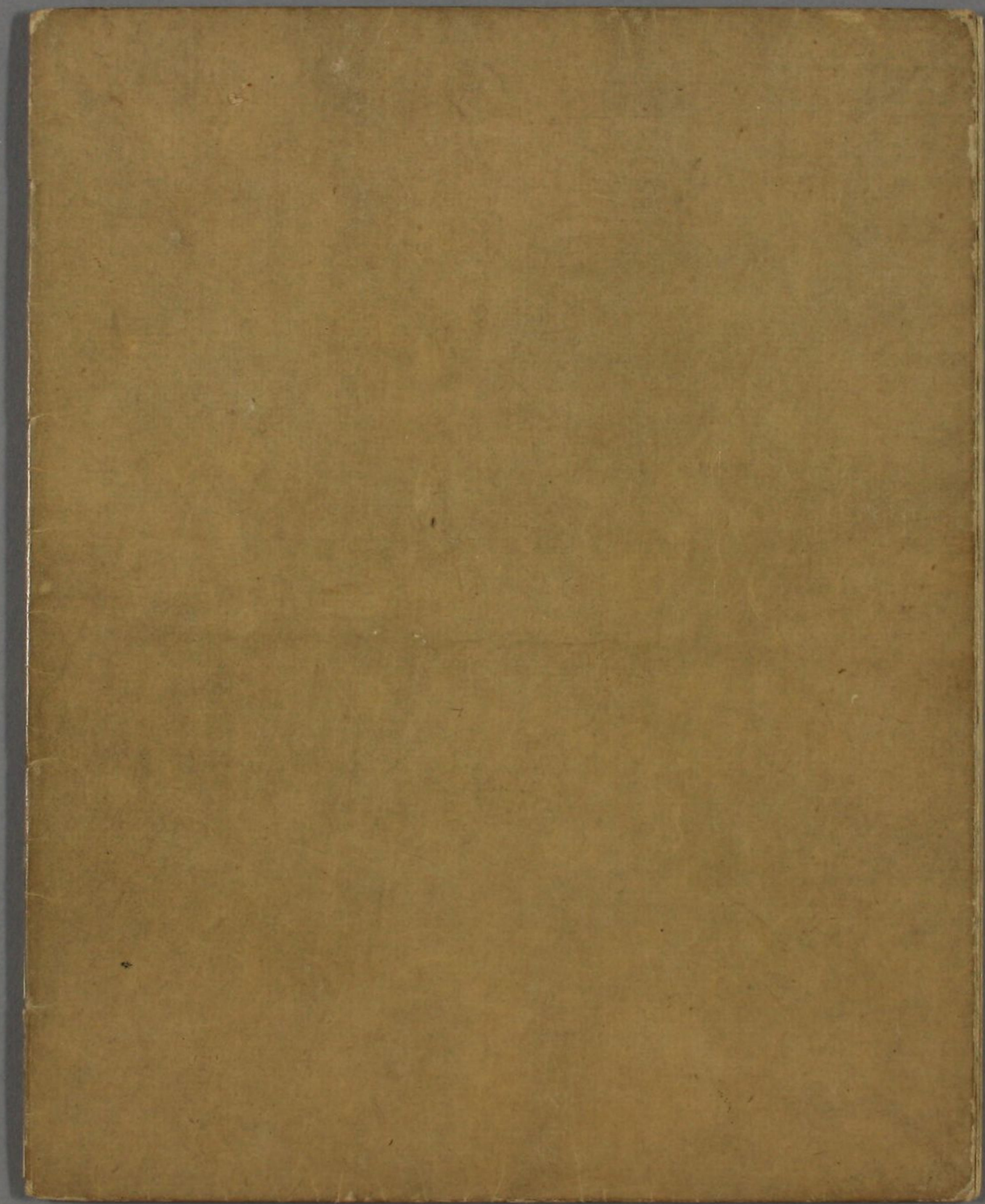
Handwritten text in a cursive script, likely a musical score or a list of notes, spanning the left page of the manuscript. The text is written in dark ink on aged paper and consists of approximately 12 lines of dense, flowing characters.

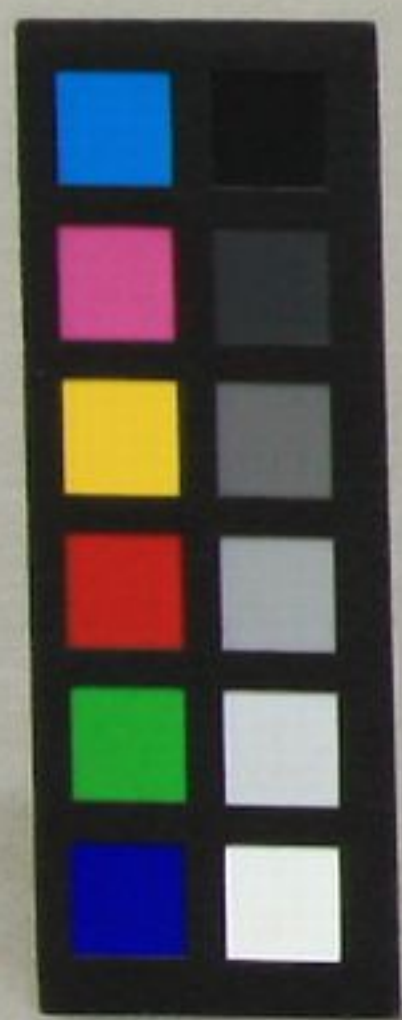
Handwritten text in a cursive script, likely a musical score or a list of notes, located at the bottom of the left page. The text is written in dark ink on aged paper and consists of approximately 12 lines of dense, flowing characters.













智

花山院
源



一部

天長元年八月

