

Historic, archived document

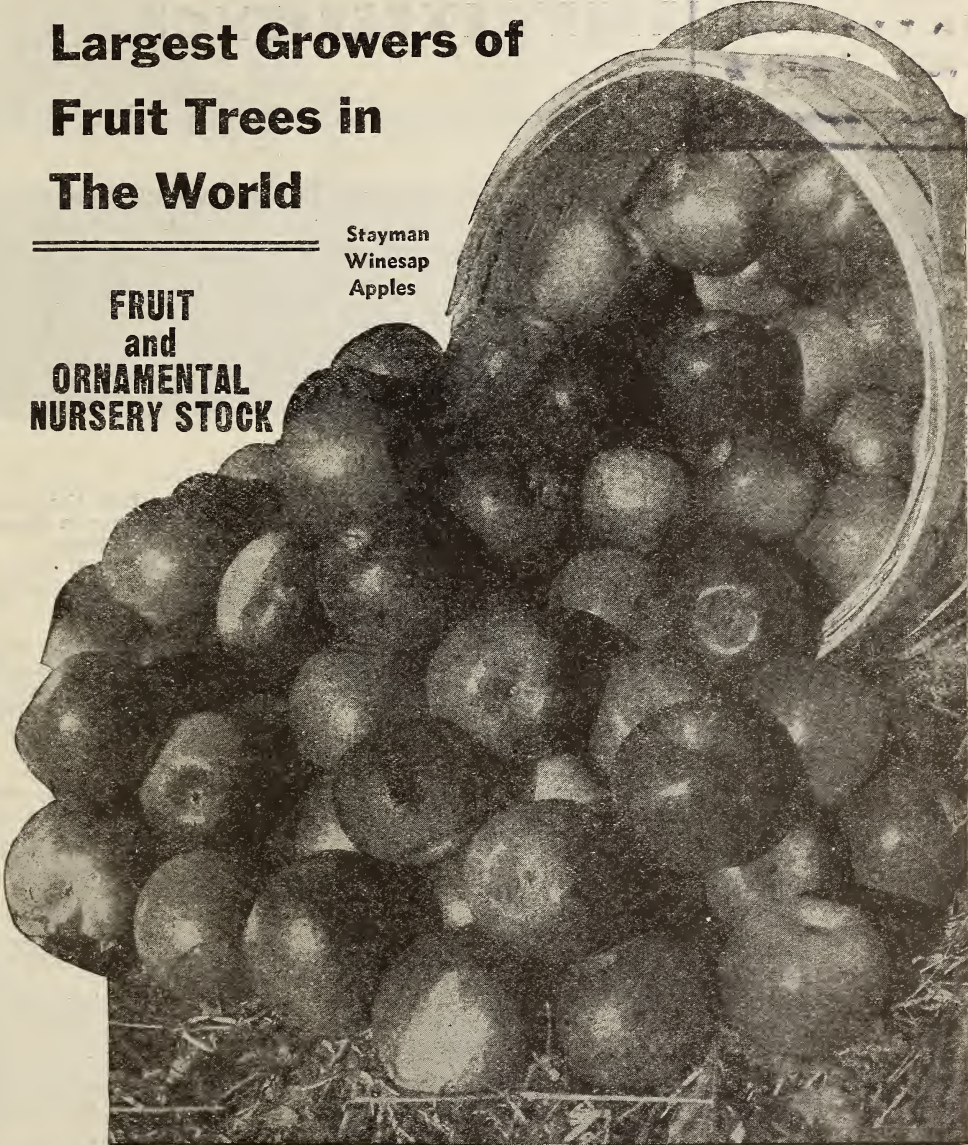
Do not assume content reflects current scientific knowledge, policies, or practices.

INDEXED
HARRISONS' Annual **1934**
(50th Year)
NURSERY BOOK

**Largest Growers of
Fruit Trees in
The World**

**FRUIT
and
ORNAMENTAL
NURSERY STOCK**

Stayman
Winesap
Apples



HARRISONS' NURSERIES, Inc.
BERLIN • MARYLAND

Over Five Thousand Acres in Nurseries and Orchards

A HALF CENTURY OF NURSERY EXPERIENCE



A Portion of Harrison's' Fruit Tree Nursery

IN THE year of 1884 Joseph George Harrison founded Harrison's Nurseries in a modest way by planting an acre each of peach trees and strawberry plants.

In 1886 his sons, Orlando and George A. Harrison, formed a co-partnership, being J. G. Harrison and Sons, and it was the vision, foresight and undaunted courage of the sons which was responsible for the rapid and huge growth of the young, nationally known organization.

Experts were employed for the proper operation and development of the various departments and new lines of horticultural items were added for propagation from year to year. The sales rapidly increased, thereby making it necessary to grow larger volumes of nursery products, consequently purchasing additional farms. It was fortunate for the progressive Proprietors that Berlin, Maryland, has the best soil and an unusually favorable climate for the proper growth and development of horticultural varieties, with ample labor. The success was due to growing products of superior quality with experienced nurserymen and by selling them at reasonable, attractive prices to their customers throughout the several States of the Union, as well as foreign countries. Senator Orlando Harrison was the executive and personally supervised the sales and the packing houses, while Honorable George A. Harrison was personally in charge of the propagation and growing one of the largest and most complete

lines of nursery stock throughout the Nation. He was known as the best grower in America and his reputation was international.

Orlando and George A. Harrison were the pioneers in planting and developing commercial peach and apple orchards on a large scale in the East.

The present owners, being G. Hale, Henry L., Orlando, John L., Joseph G. and Burbage Harrison are practical nurserymen and orchardists, especially trained in horticultural pursuits. They are in personal charge of various departments.

The six Harrisons devote their entire interest in producing the highest quality products to be found in America and are selling them at the lowest prices within a generation.

We are also operating one of the largest aggregations of highly developed commercial peach and apple orchards in the East.

We deeply appreciate the loyal support of the thousands of customers who have favored us with their business during the past fifty years.

The "New Deal" is encouraging and we believe that horticulture has a bright and prosperous future.

Our Golden jubilee has been due to your loyalty and all the members of the Harrison family are very grateful for your cooperation.

Sincerely yours,

HARRISONS' NURSERIES, Inc.

G. HALE HARRISON,
President.

Better fruits can come only from better trees planted on ideal soils, correctly fertilized, properly pruned, and well cultivated. A guarantee of these trees must be parent trees of proven character and performance

GROW FRUIT FOR PROFIT

Little Orchards Make More Money Than Big Farms



Heavy bearing peach trees in Harrison's orchards from which we procure Bud Selected strains

Plant Harrison's Selected Trees

Hundreds of our friends visit us at Berlin every year. Scarcely any one who looks over our Nurseries fails to express wonder at their extent, and admiration at the care with which we till each individual block; weeds are kept down throughout the season.

But for the rest of our friends—those who have not come—a little explanation of our methods of growing stock and handling orders may be interesting.

We grow our stock and sell it direct to planters. Thus we know the origin of all our stock and can guarantee it perfectly free from disease.

We cultivate the trees more carefully in the nursery row than the intelligent farmer cultivates his rows of corn. This careful tending plays a great part in producing for each tree a vigorous root and shapely top.

When it comes to budding we spare no pains to get everything exactly right and the varieties true to name. Every bud—every inch of propagating wood—comes from trees that we have been watching closely for years, and whose fruit is critically inspected season after season.

In short, the "ancestry" of every Harrison tree—root, trunk, and branch—is history to us before it leaves our nurseries. We cannot afford to take chances; neither can you, for it is too late to remedy mistakes when your trees come into bearing.

Mr. Farmer, if you are not making money something is wrong. Other farmers are making money—BIG MONEY—and you can do likewise if you will produce something the people want and are willing to pay for. What is the use of wearing out yourself and your land on crops that pay from \$10.00 to LESS THAN NOTHING per acre? Grow a few acres of fruit and leave the balance of your land idle.

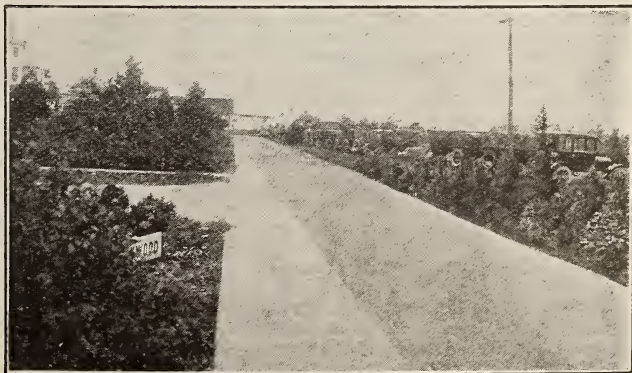
Fruit will give you a bigger cash profit than any other crop you can grow. You'll make more actual money from one acre of fruit than you will from 20 to 40 acres of ordinary farm crops. Show us a prosperous farmer and we will show you a fruit farmer. The reason for this is plain and simple—there is a big surplus of ordinary farm crops such as Wheat, Potatoes, Corn, Cotton, Etc., while on the other hand there is a shortage of fruits.

There are no secrets involved in making big money with fruits. Plant our selected varieties and success is assured. Thousands of other farmers with land like yours and with the same training and ability have paid for their farms and become independent growing fruit.

There is nothing but you yourself to keep you from making the Big Profits enjoyed by others. You have the land, we have the trees, so let's get together. Every dollar invested in our quality, time proven trees will reap several dollars of profits.

Harrison's Service

"Harrison Service" goes further than selling good trees and packing and shipping them right. We help you first, if you wish, in selecting suitable varieties for your soil, climate and market conditions; we tell you about the special care each variety needs; how each fruits best, and when the crop ripens. This information is at your service before you buy—after you buy—always; it is absolutely free to you without "strings" of any kind.



Entrance to office, display grounds and packing houses

PEACHES

The Crop for Huge Profits



A peach orchard is a profitable investment. One of Harrison's famous bearing peach orchards

It has been estimated that Peaches have a greater commercial value in the United States than all other stone-fruits combined, a recent report covering several seasons giving a value of more than \$30,000,000 for the average annual crop. Transportation problems have been solved and it is a comparatively easy matter to ship the fruit to distant markets, thus taking advantage of the demand and securing the highest possible prices. A Peach orchard may live and produce profitable crops for twenty-five years or even longer, but the wise grower plans to secure the cost of trees and the expense of planting from the first five or six crops, in addition to securing a fair profit and adequate returns for the labor, fertilizer, and other expenses incurred annually. The ideal soil for Peaches is a light sandy loam but they will succeed on a great variety of soils provided they are well drained.

Quality Peach Trees

Harrison's peach trees are the best peach trees you can plant in your orchard. Our superior Berlin climate and soil, plus Harrison's methods of propagating, planting, budding, cultivating, spraying, pruning, digging,

grading and packing are what make the fine trees. If we could get you to come to Berlin, we would show you all the details. If you cannot come and will send us your order, we will stake our reputation on the promise that you will get the very best trees that can be grown.

Budded From Bearing Trees

Our trees are budded direct from our own bearing orchards of superior strains. They will come into bearing earlier, produce larger crops and return

the grower more profits than trees produced by less up-to-date methods. The real worth of our peach trees is proved best by many thousands of bearing peach orchards planted with trees grown at Berlin.

Now Is the Time to Plant

Now is the ideal time to plant peach trees; during the last few years the number of peach trees planted has declined considerably; this is going to result in a shortage of peaches and cause the price of the fruit to jump to extra high prices. Take advantage of the rock bottom prices that we are selling peach trees for and plant an orchard now; it will pay you a big profit.

Atco, N. J.
Sept. 14, 1933

Gentlemen:

I thought I would write and tell you that of the 1900 peach and apple trees we bought of you in April we lost just two peach and one apple, leaving 1897 living and making a nice healthy growth.

Yours truly,
JOHN WYNOCKER

Peach Varieties That Are Winners

The peach varieties in which we specialize and recommend are those that have distinguished themselves in our own orchards and those of our fellow fruit growers in other sections. For commercial planting we unhesitatingly recommend the following varieties.

Very Early

Red Bird Cling has our highest recommendation in the very early group. This peach grows to perfection in all peach growing regions and brings remarkably high prices on the market. In certain Southern districts Early Rose is a prime favorite, makes huge profits in Georgia and other Southern states.

Early

Hiley is easily the leader, it outranks all early peaches and is being widely planted in the south. Golden Jubilee is fast becoming an important commercial variety. It is the earliest yellow freestone peach of any commercial importance. Carman, Mamie Ross and South Haven are also good varieties.

Early Midseason

Early Elberta is a very profitable peach and grows to perfection in certain sections. Slappey is also an ideal variety, its flavor is extraordinarily good and it is a sure cropper.

Midseason

This is the season in which the best and most profitable varieties mature. Elberta is



Harrison Quality peach trees in the nursery rows—propagated from carefully Bud Selected strains

by far the best money making peach in all sections of the country. We offer the original strain. Plant heavily to this variety. J. H. Hale is rapidly approaching Elberta in popularity. Most profitable peach when raised under exacting methods. Plant heavily to this variety. We offer original strain trees. Belle of Georgia is the leader of them all in quality, grows to perfection along the Atlantic seaboard. No orchard selection is complete without this remarkable peach.

Midseason Late

Brackett has our highest recommendation for a variety to prolong the Elberta season. It ripens slightly later and is a handsome profit maker. Other desirable varieties in this group are Crawfords Late and Shippers Late Red.

Late

There are no outstanding varieties ripening at this season. In a commercial way they are only grown in a very limited quantity. Our pick in this group are Beer Smock, Fox Seedling, Iron Mountain and Salberta.

Very Late

Krummels is the best late peach, it is followed closely by Salwey and White Heath Cling.



Orchard cultivator at work in one of Harrison's young peach orchards

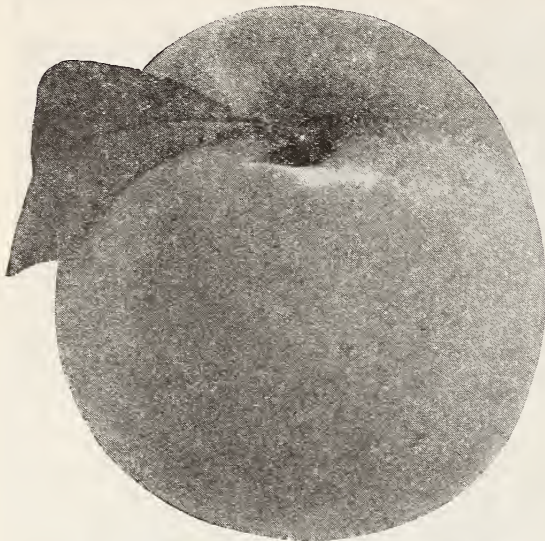
West End, N. C.
Dec. 9, 1933

Gentlemen:

This is to notify you the peach trees arrived in good condition and we are pleased with them.

Yours sincerely,
M. C. McDONALD

Harrisons were America's pioneers in originating Bud Selection of fruit trees, starting about 40 years ago, thus quickly outclassing the slow process of evolution.



Red Bird Cling—Earliest large peach commanding high prices

Very Early Varieties

Alexander. White, medium to large, greenish white, with deep red flesh. Vigorous and productive.

EARLY ROSE. White, cling, small to medium size, red blush, sweet flavor. Tree is an average grower, but a very prolific bearer. Georgia growers make astoundingly huge profits from Early Rose, packing mostly in round half-bushel baskets and six-gallon carriers; consequently this variety is being heavily planted in Georgia.

Greensboro. White, freestone, extra large for such an early peach, and one of the handsomest, being a rich, yellowish white, with crimson cheek; flesh is white, exceedingly tender and of fine quality. Being somewhat tender, it requires extra care and quick shipments, preferable for nearby markets.

Mayflower. White, cling, small size with red all over. Limited planting in Southern Georgia.

RED BIRD CLING. White, cling, extra large with a bright red blush. The first peach of large size to ripen. Brings extra high prices in all the leading markets. We highly recommend the planting of this variety in localities within trucking distances of the city markets.

Triumph. Yellow, semi-freestone, medium to large size, dark red coloring, excellent shipper. Generally planted in the colder sections of the North.

Early Varieties

CARMAN. Semi-freestone, medium size, being a remarkably attractive and luscious Peach, oval-shaped, yellowish white with bright red cheek; flesh creamy white, spicy and good flavor. Tree is very hardy, strong grower and the heaviest producer of the early varieties, also a sure cropper. Carman stands shipping so well that it reaches the market in prime condition which with its handsome appearance causes it to bring satisfactory prices.

Cumberland. White, semi-freestone, new variety.

Eclipse. Yellow, freestone, new variety.

270 Palisade Ave., Bridgeport, Conn.
April 4, 1933

Gentlemen:
I received the trees in good condition and thank you very much for same.

Respectfully,
GEORGE MEYERS

Golden Jubilee—
New Sensational Peach



PRICES OF HARRISONS' PEACH TREES

	1 to 9 trees	10 to 49 trees	50 to 299 trees	300 to 599 trees	600 to 1000 trees	
5 to 6 feet...	\$0.40	\$0.30	\$0.20	\$0.18	\$0.15	each
4 to 5 feet...	.35	.25	.17	.15	.13	each
3 to 4 feet...	.30	.22	.15	.13	.11	each
2 to 3 feet...	.25	.17	.13	.11	.08	each
1 to 2 feet...	.23	.15	.11	.09	.06	each

For larger quantity than 1000 trees, write for special prices. Can be assorted Apples, Peaches, Cherries, Pears, Plums or other fruit trees.

GOLDEN JUBILEE. Yellow, freestone, ripening four or five days ahead of Carman. Very attractive peach of good size and fair quality. It withstands shipment better than most early varieties. This peach has attracted much attention in New Jersey where it was originated by the New Jersey Experiment Station. Where an early, yellow freestone peach is desired we would recommend planting this variety. Our strain is the original, buds being cut from bearing trees in New Jersey.



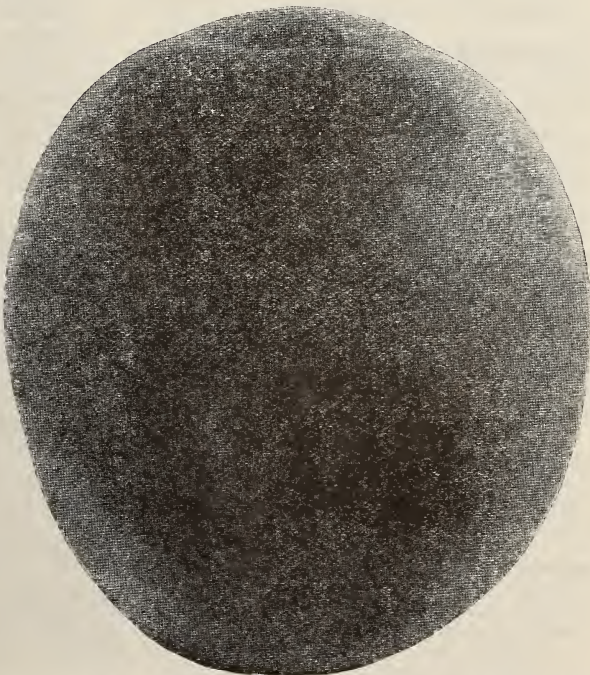
Hiley—Best Southern peach, wonderful money maker

HILEY (Hiley Belle). White, freestone, medium size, highly red colored, very firm, being an exceedingly handsome creamy white peach with a delightful red cheek; flesh is white, fine texture, aromatic, very juicy and of the highest flavor. Tree is strong grower, very healthy and a marvelously heavy bearer. Being an excellent shipper, with the stamina to withstand very long hauls under refrigeration, together with its beautiful, most appetizing appearance, and being easily, attractively packed in six-gallon carriers, bushels and half-bushels, along with its recent high reputation and favor with the buying public, has made Hiley a strong contender as the highest general averaged priced peach. Many of our varieties are propagated direct from the original strain, and Hiley being no exception, as our late Mr. George A. Harrison cut the buds from the orchard of Mr. Eugene Hiley of Marshallville, Georgia, the originator of Hiley, then known as Early Belle, and later as Hiley Early Belle, now known as Hiley. Our Messrs. Harrison have frequently visited Georgia and also cut buds from trees being propagated direct from the original strain of Hiley from the famous Hiley orchards of Rumph Brothers of Marshallville, Georgia. Add Harrison's Strain of Hiley to your commercial plantings for real profit.

delicious flavor. Ripens about fifteen to eighteen days ahead of Elberta. Tree very hardy, good grower and a consistent, heavy bearer. A most promising early yellow, freestone peach for the commercial orchards. Suggest you plant South Haven in a limited way to compare with other standard varieties.

Yellow St. John. Yellow, freestone, medium size, one of the earliest of the Crawford types. Handsome and delicious flavor. Tree is hardy, vigorous, heavy bearer.

MAMIE ROSS. White, freestone, large, covered with a beautiful delicate carmine-red blush; firm, juicy, good quality, excellent shipper, being the largest size early peach, ranging about a third larger in size than Carman. Popular on the markets where known, especially New York City, sells at a premium over any other variety ripening at the same time, generally at very satisfactory prices. Mamie Ross is being planted in preference to Carman, ripens two or three days later than Carman, but is far superior.



SOUTH HAVEN. Yellow, freestone, large, roundish, uniform size, deep yellow with a red cheek,

South Haven—Worthy new early variety. Sells for good prices

The successful orchardist selects his varieties from those known to be superior and chooses the best strain of each variety



Belle of Georgia—Best white peach—marvelous flavor—
heavy cropper—dependable—popular

Early Midseason Varieties

CHAMPION. White, freestone, very large, creamy white with red cheek, sweet, juicy; very high flavor. Champion has lost its past commercial importance because it will not carry satisfactorily under refrigeration, but as a home garden or a roadside peach, it is one of the best. Tree is hardy, large grower and productive.

CRAWFORD'S EARLY. Yellow, freestone, large size, juicy, sweet flavored, highly prized for canning. Tree strong grower and prolific bearer. One of the old-time commercial varieties, which has been extensively planted in years past, but now mainly a home market fruit.

EARLY ELBERTA. Ripens about a week to ten days earlier than Elberta; yellow, freestone, large, somewhat similar to Elberta, but a trifle better flavor. Its earliness is its most attractive feature and is being planted more or less in commercial orchards. Excellent home orchard peach.

Fitzgerald. Yellow, freestone, large, good.

Mountain Rose. White, freestone, large, round, white with much red in several shades, juicy, rich, tender, sweet. Old-time favorite.

ROCHESTER. Yellow, freestone, large, covered with mottled red blush; flesh yellow stained with red at pit, very good quality, prolific bearer. One of the best early midseason yellow freestone peaches for nearby markets, and highly desirable for canning. Our buds came direct

from the original tree from Mr. A. H. Heberle of Rochester, New York, the originator. Popular in Western New York and Michigan.

SLAPPEY. Yellow, freestone, medium to large size, beautifully red colored, rich, juicy and extra good flavor. Good commercial variety for nearby markets and one of the best early yellow freestone peaches.

Midseason Varieties

BELLE OF GEORGIA (Belle).

White, freestone, large size, and most attractive in color and shape, with a light red cheek; flesh white, firm and delicious; extra fine flavor

and generally considered as the highest flavored peach grown. Trees grow quickly and shapely; are hardy and bear bumper crops annually; one of the heaviest consistent commercial bearers. One of the best long-distance shippers. Its highly attractive coloring with large size and wonderful carrying qualities and unusual pleasing flavor have won Belle of Georgia the national reputation of being the best white peach. Packs well in the standard six-gallon carriers, also bushels and half bushels. Always brings the highest market prices during its season. Our Belle of Georgia are propagated from the original strain; the buds being selected and sent us by a relative of the late Mr. L. A. Rumph of Marshallville, Georgia, who was the originator of this famous variety.



Harrisons' Original Strain of Elberta always bears bumper crops. Best strain known

ELBERTA

The World's Greatest and Best Money-Making Peach

Yellow freestone, Midseason. Fruit is large to extra large; golden yellow with brilliant shades of red; firm, juicy, rich, sweet and good flavor. Elberta has the greatest international reputation of any peach. It has been the standard for all other peaches almost since the date of its introduction. The coloring of Elberta is practically perfect. The rich, yellow skin is almost entirely covered with dark red blush upon the sunny side. This attractive appearance and the uniform large size serve to sell it almost on sight.

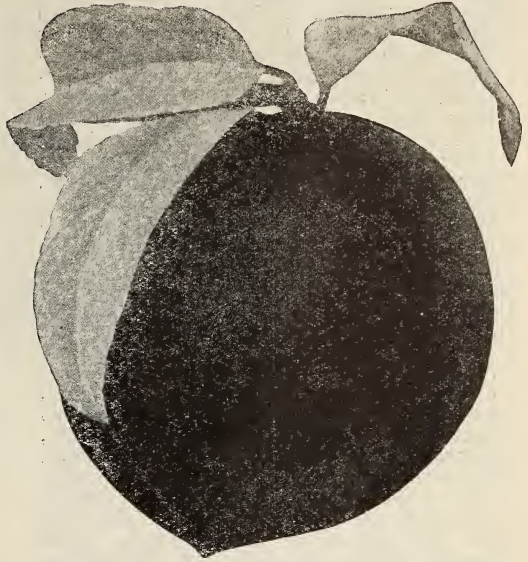
The Best Commercial Variety

Tree is vigorous, very hardy, sturdy, thrives in widely different localities. Elberta is hardier in bud than most varieties, and is a uniform prolific bearer. You can always depend on Elberta as a sure cropper.

Elberta Is the Best Long-Distance Shipper

The large fruit, being uniform in size and shape, along with its high attractive red color and firmness, also its ability to stand shipments of three thousand or more miles under refrigeration in cars for two or three weeks before being consumed, but with stamina enough to still look its best, has won Elberta the reputation of being a peach without a peer and the variety which is always in favor and strong demand with the buying public, therefore demanding the highest possible market prices. Elberta is by far the best canning peach.

We believe that we have the best strain of



Elberta—The World's best peach—champion long distance shipper. Marvelous money maker

Elberta obtainable. In our own commercial orchards we have tens of thousands of this strain, it was obtained from the late Samuel H. Rumph of Marshallville, Georgia, the originator of Elberta, from the original tree and budded in our nurseries.

There are many different types of Elberta, and the "Best Strain" is the cheapest and most profitable in the long-time investment.

Recommend planting fifty to seventy-five per cent of your commercial orchard to Elberta.

Plant Harrison's Superior Strain of Elberta and reap the huge gold profits.

Whitehall Street,
New York City, N. Y.
March 23, 1933

Dear Sirs:

Acknowledging your letter of the 22nd. I do not need any nursery stock this Spring. After all, I have only a small orchard and you supplied me such good stock on previous occasions, which is flourishing luxuriantly and looks like the proverbial "million dollars" that I will not need any more.

Yours very truly,
H. C. BLACKISTON



Elberta peaches packed in crates. World's best peach for commercial orchards

J. H. HALE (Hale). Yellow, freestone, extra large, round, beautiful red coloring, firm, and of the highest quality and enticing flavor. Ripens about two or three days prior to Elberta. Hales are too large to properly pack in six-gallon carriers, but they make the most attractive and commanding appearance, when packed ring-faced in bushel and half-bushel baskets. Hale quickly made a national reputation and is a strong competitor of Elberta, being just about as good a shipper as Elberta on long hauls. Prices on Hale and Elberta, with a large national crop, are about the same, but on a short crop year Hales usually sell from 25c to 50c, and sometimes 75c more per bushel on the largest wholesale markets. Our Hales are propagated direct from the original strain, the buds being selected and cut by our late Senator Orlando Harrison and his son, Mr. G. Hale Harrison, in person, with the late Honorable J. H. Hale of South Glastonbury, Conn., the originator of J. H. Hale, who at that time was the "Peach King of America", owning large commercial orchards at South Glastonbury, Conn., and Fort Valley, Ga. Tree is somewhat dwarf, a moderate grower, and should be planted on the richest, best, well drained peach soil available. Hale needs more cultivation and fertilization than most varieties.

Plant Harrisons' strain of Hale for fancy trade.

New Prolific. Yellow, freestone, large, productive.

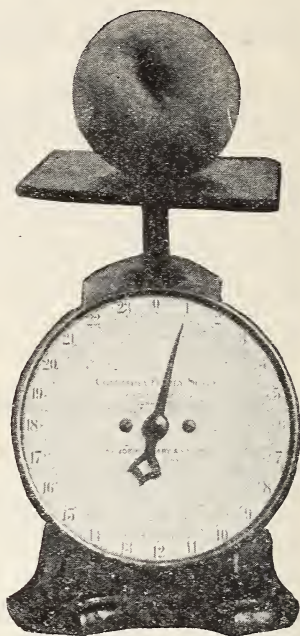
Old Mixon Free. White, freestone, large with bright red cheek, tender, rich, excellent flavor.

RAY. White, freestone, large, most attractive red blush of delicate shade, juicy, delicious, tender and excellent flavor. Trees are exceedingly strong growers, shapely and symmetrical, a regular bearer of big crops and generally considered as the heaviest, most

consistent cropper known. Plant Ray for near-by markets and roadside stands, as its fine, attractive appearance and high flavor sell it on sight.

Midseason Late Varieties

BRACKETT. Ripens about a week later than Elberta, and fruit similar to Elberta, but of better flavor. Yellow, freestone, large size and highly flavored. The best commercial or family peach to plant so as to extend the period of ripening in which the Elberta is so popular. Brackett is a good shipper and brings the highest prices, always selling at the same high prices with Elberta and often from 25 cents to 50 cents per carrier or bushel higher, especially on the New York City and Boston markets. Brackett will grow in any section where Elberta will thrive. You will never regret planting Brackett in your commercial or home orchard.



J. H. Hale peaches often weigh one pound. Largest size commercial peach grown, always commanding highest market prices

CRAWFORD LATE. Yellow, freestone, superb in size and shape; splendid yellow, with broad dark red cheek; flesh deep yellow, juicy and melting, rich, winy flavor. One of the best late sorts. Tree vigorous, hardy and sure bearing, coming at a time when the midseason peaches are over, this variety is eagerly bought up for canning and preserving, and brings highest prices. Being such a remarkably good shipper, it reaches the market in first class condition. An old commercial favorite.

Frances. Yellow, freestone, medium to large size; good quality.

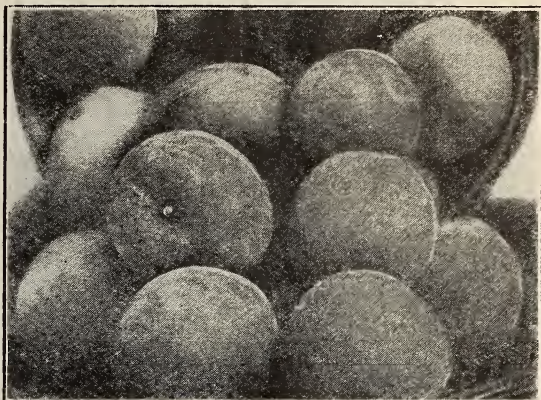


Brackett—Proven to be best peach grown to extend Elberta shipping season

ROBERTA. A comparatively new variety of great merit. Resembles the Elberta in many respects, but ripens about a week to ten days later. An excellent sort to prolong the Elberta season.

Shippers' Late Red. Yellow, freestone, large, round, bulkier than Elberta, with an attractive red coloring which is catchy to the eye. Flesh is yellow, juicy, sweet and pleasing flavor. Trees are very hardy, good growers, bears young, sure cropper, and prolific bearer. Promising new late commercial variety and excellent home sort.

Wilma. Yellow, freestone, large, good red color, somewhat similar to its parent, Elberta.



Shippers Late Red—Suggest including in your next orchard

Late Varieties

Beer's Smock. Yellow, freestone, large, oval, skin orange-yellow mottled with red; high flavor.

Berk's Favorite. White, freestone; new variety.

Fox Seedling (Fox). White, freestone, large; white with whole side red, melting, sweet, high quality and high flavor. Good for roadside market and canning.

Gold Drop. Yellow, freestone, medium size, fine flavor, heavy bearer, very hardy. Generally planted in Michigan.

Iron Mountain. White, freestone, large, generally planted in New Jersey.

Salberta. Yellow, freestone, large, being a satisfactory cross between Elberta and Salwey. Salberta inherited the size, quality and productiveness of Elberta, and in-

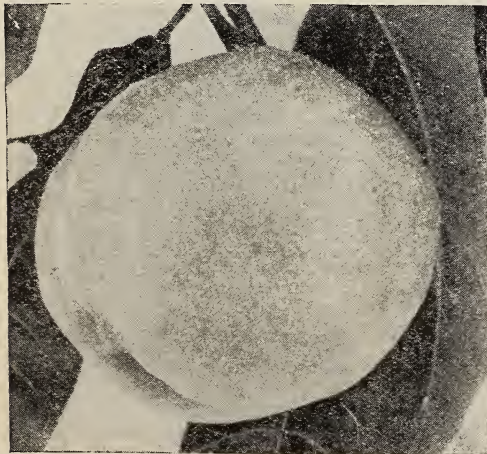
herited the lateness in season of Salwey, making a fine combination for a profitable late peach. This new variety is being planted commercially more or less in Ohio and Michigan.

Very Late Varieties

KRUMMEL'S (Krummel's Late October). Yellow, freestone, extra large, round, deep yellow with a blush of carmine on the sunny side—fine flavor. Good shipper, and ripens so late in the season that it has no real competition on the market, generally bringing satisfactory prices. If you desire a real late peach, of good quality, then there is none better than Krummel's.

SALWEY. Yellow, freestone, large, beautifully mottled with red and a brownish cheek; the flesh is yellow, firm, rich, juicy and sugary, and particularly fine for canning and preserving. Generally grown in the mountain districts, good shipper, desirable for the fancy trade.

WHITE HEATH CLING (Heath). White, sometimes called Mammoth Heath Cling, extra large, round, with red blush, flesh is firm, white, exceedingly juicy, and ripens fully to the pit. Favorite for canning and pickling. Be sure to include in your family orchard.



White Heath Cling—Best canning and pickling variety grown

15 Broad Street, New York City, N. Y.
Nov. 18, 1933.

Gentlemen:

Thank you for your letter of the 17th and for arranging about the shipment. It is very good of you to give this your special attention. Your interest in this small order is greatly appreciated.

Cordially yours,
EDWIN S. S. SUNDERLAND

APPLES

A Lifetime Investment



Two Year budded Baldwin apple trees. Note the thrifty growth, propagated from Bud Selected Strain

Plant an apple orchard this year, it will give you a lifetime investment with huge profits. What other kind of enterprise can you invest in and make 20% to 100% profit on your investment every year?

Many of the wealthiest farmers all over the country are fruit growers, what they have done you can do yourself by adhering to certain general principles in growing apples.

It Pays to Plant the Best Trees

Apple growing pays handsome profits, but in order to get these profits it is necessary to start with the best trees and the most desirable varieties. In our nurseries we have growing the finest apple trees it is possible to produce. All our trees are propagated on whole root stock insuring

an unusually large root system, which is the base of plant growth. Our apple trees are scientifically budded from selected heavy bearing strain trees of the variety desired. You have probably noticed how one tree of a variety yields more fruit than the same variety in the same orchards. We have selected our mother trees for propagation use from among the best of thousands of trees in our own commercial orchards.

Today we believe that we have more of the best strains of apples in our nursery than any other nursery concern. Practically ever since we started in the nursery business we have been on the outlook for the better things.

Varieties to Plant

The next most important thing in planting an orchard is the selection of varieties, in this itself lies the difference between profit and loss on your investment. In our test orchards we have tried out practically every variety and find that there are but few worthwhile varieties to plant on a commercial scale. However, for local conditions there are a number of varieties that give satisfactory results. But in order to be safe we would recommend the following.

Summer Varieties

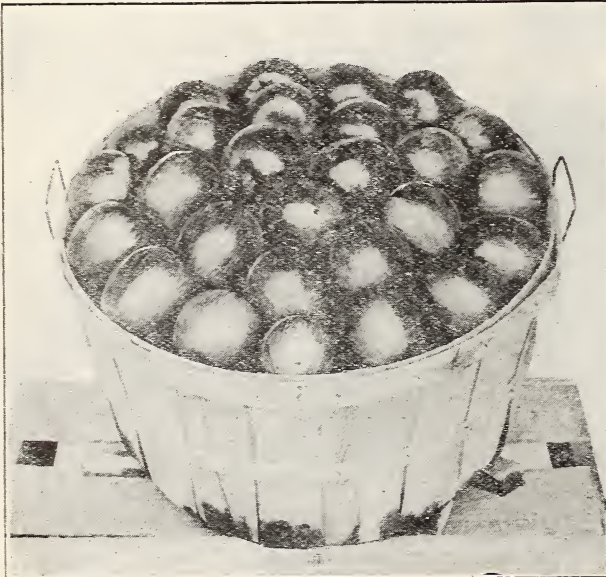
Early apples are very profitable in sections where they mature early, or in sections that have a local demand. The most profitable early apple is the Yellow Transparent and is by far the best. It is adapted to most every locality. Other desirable early apples are Williams Early Red and Duchess. In certain sections Summer Rambo and Starr are giving highly desirable results.

Autumn Varieties

McIntosh Red is in a class by itself in this group, it brings extra fancy prices on the market. Grimes Golden is still the leading yellow apple grown, it is highly desirable for export markets. Jonathan is an apple that has been overlooked in the Eastern orchards, it is a sure winner and we advise to plant this variety.

Winter Apples

Delicious, Harrisons' Red Delicious, Winesap, Rome Beauty, Stayman Winesap and York Imperial are the leading profitable late varieties. In planting your orchard be sure to pin your faith on one of the above. They have made money for others and they will do the same for you. Other desirable winter varieties for certain sections are: Baldwin, Cortland, Nero, Rhode Island Greening, Red Rome Beauty and Gano.



Williams Early Red—World's best red summer variety

Summer Varieties

BENONI. Orange-yellow—lively red, productive.

DUCHESS (Duchess of Oldenburg). Medium size, red striped, flesh white, juicy and good flavor. Unusually heavy bearer, very dependable cropper. You can depend on the Duchess to yield apples you can sell for good prices. Trees are natural dwarf growers and make fine fillers; require small root and branch space.

Early Harvest. Very early, not a good keeper; fruit medium size, pale yellow, tender, juicy, sub-acid. Fine for home orchard because of its merit as a cooking and dessert fruit. Tree is a vigorous grower and bears early and regularly.

Early McIntosh. Red, attractive, good size; flesh white, fine, tender, juicy and fine flavor, being similar to McIntosh Red. Tree vigorous, hardy, healthy and productive.

Liveland Raspberry. Large, waxy white, marbled with crimson, flesh white stained with red, tender, poor quality. Tree vigorous, early bearer.

Red Astrachan. Medium size, yellow with dark red patches; flesh decidedly acid and juicy; excellent for home plantings, but on account of its poor shipping qualities and irregular bearing not advisable for commercial orchards. Tree very hardy, vigorous and a very heavy bearer every other year.



One year budded apple trees are favorites with commercial orchardists



Duchess of Oldenburg—Red strain—young prolific bearer, excellent filler variety

Red June (Carolina Red June). Medium size, conical, dark red, juicy, fairly good flavor, very productive.

Starr. Large, attractive with bright yellowish smooth skin; sometimes marked with a faint

blush and numerous russet dots; flesh yellow, fine, very tender, crisp, juicy, aromatic and of extra fine quality, bringing highest prices. Recommended to those with nearby markets, but a poor long distance shipper. Popular in Southern New Jersey.

Sweet Bough. Large, pale yellow; tender, sweet.

Summer Rambo. Large, yellowish green, splashed with red, crisp and tender. Very good.

WILLIAMS EARLY RED. Medium to large size, bright, rich red; flesh is crisp, tender, juicy and sub-acid; good quality. Its bright, attractive red coloring, with satisfactory size and firmness, makes the Williams Early Red the most popular summer variety grown, and always in strong demand with exceedingly high prices. It is ready for market just about the time people are growing hungry for new apples and are willing to pay a handsome premium for real fruit. Fine for a filler or permanent tree, being hardy, and can be successfully grown in New England States and Canada. All commercial orchards should include Williams Early Red.

Wilson Red June. Fairly large, red; good quality. Popular in New Jersey.

PRICES OF HARRISON'S' APPLE TREES

	1 to 9 trees	10 to 49 trees	50 to 299 trees	300 to 599 trees	600 to 1000 trees
5 to 6 feet.....	\$0.55	\$0.45	\$0.32	\$0.28	\$0.25 each
4 to 5 feet.....	.45	.35	.27	.23	.20 each
3 to 4 feet.....	.35	.27	.22	.18	.15 each
2 to 3 feet.....	.30	.23	.18	.15	.12 each

For larger quantity than 1000 trees write for special prices. Can be assorted Apples, Peaches, Cherries, Pears, Plums or other fruit trees.



Yellow Transparent—Most profitable summer apple grown

YELLOW TRANSPARENT. Medium to large; cream and yellow, tender, juicy, sub-acid, fragrant, good flavor. Tree is very hardy, healthy, somewhat of a dwarf grower, bears very young, fine as a filler, and one of the few varieties that grow and bear bumper crops in Canada as well as Georgia. Yellow Transparent is the first commercial apple on the markets and ripens when the demand for summer apples is extra strong; consequently it always brings the best prices.

Autumn Varieties

American Golden Russet. Sometimes called Sheep-Nose. Medium size, round; greenish russet or bronze.

Fameuse (Snow). Medium size to large; deep red; flesh snowy white, fair flavor, sells for good prices on local markets, but not recommended for shipping. Most popular in Canada.

Gravenstein. Extra large, perfect in form and handsome in coloring—orange-yellow overlaid with broken stripes of light and dark red; flesh is yellowish, firm, crisp, tender, juicy, fine flavor. Good for cooking, extra vigorous tree, comes into bearing rather early and bears profuse crops regularly. Grown most extensively in California and commands good price.

GRIMES GOLDEN (Grimes). Medium sized, golden yellow, tender, rich, aromatic, sub-acid, delicious, possibly the best flavored apple known, and a good keeper. No better variety exists for eating raw or for cooking. Tree is very hardy and one of the heaviest bearers known, producing extra large crops annually. Excellent variety for a filler, as it comes into bearing very early. Grimes Golden is

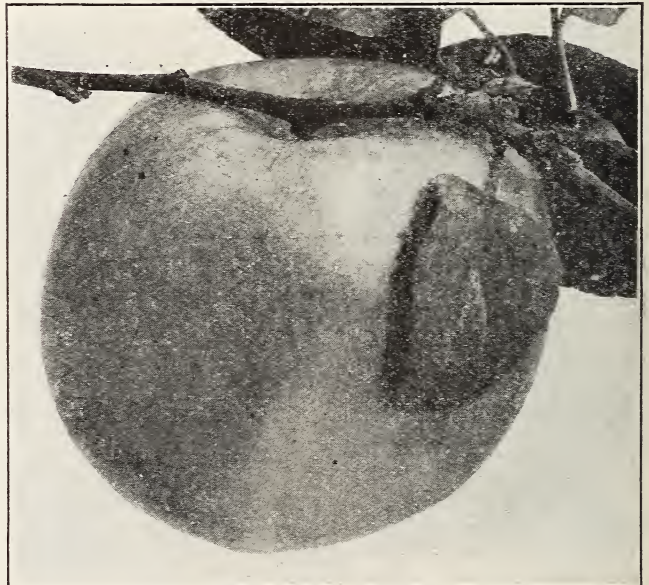
the best pollinizer known, especially for Stayman Winesap, Delicious, Paragon, or Mammoth Black Twig, Winesap, McIntosh and others. Be sure to include Grimes Golden in your orchard. When all factors are considered, Grimes Golden is the best, highest flavored, longest keeper and most profitable yellow apple grown.

JONATHAN. Medium to large; brilliant red, juicy, fine grained, tender, mild, sub-acid, and very highly flavored. Late keeper and an excellent shipper. Tree long lived but comes into bearing very young and produces big crops every year. Popular bushel and box variety, demanding highest prices on account of its attractive red appearance and fine flavor. Fine variety for a pollinizer.

King David. A beautiful deep dark red apple, resembling Jonathan as to size and shape, but not quite as good flavor. Splendid shipper and keeper. Tree hardy, and comes into bearing young.

King (King of Tompkins County). Extra large, very red, with a tint of yellow, flesh yellow, crisp, juicy, sub-acid, good quality. Tree slow grower and not a big producer. Generally planted in New York.

Lobo. This variety has come into prominence in a number of fruit districts due to the fact that it is very highly colored and has many McIntosh characteristics. While not equal to McIntosh in quality, the quality is good. The season of Lobo begins a little earlier than McIntosh, but it keeps about as long. The earlier coloring enables growers to pick Lobo in advance of McIntosh. It hangs on the tree better than McIntosh.

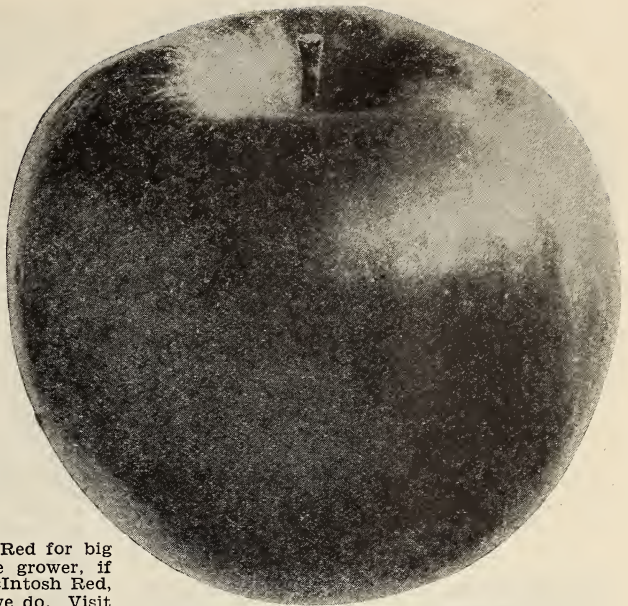


Grimes Golden—The best yellow apple

McINTOSH RED. An early winter variety in New York, Michigan and New England States. An exceedingly valuable hardy, attractive apple; medium large size; nearly covered with red. Flesh white, fine, tender, juicy, sub-acid and refreshing, and generally considered as the highest and best flavored apple grown; splendid appearance, which sells it on sight. Demand always exceeds the supply of McIntosh Red and commands the highest prices of any apple on the leading American markets. The best box and bushel apple grown, and a good shipper. McIntosh Red is a Canadian apple, keeps long, but is mellow and good to use from the time it is picked and if kept in cold storage until the next crop comes. Tree is exceedingly hardy, vigorous, a very prolific bearer, consistent bumper crop producer, a sure annual cropper. Comes into fruiting early. This splendid apple can be grown from Nova Scotia to North Carolina. Growers in New York, New England, Michigan and Canada have long grown McIntosh Red for big profits. Ask any experienced apple grower, if you are not acquainted with the McIntosh Red, and he will praise it as highly as we do. Visit our own bearing commercial orchards of McIntosh Red at Berlin. Plant this variety for the big gold profits.

Maiden's Blush. One of the most beautiful; pale lemon with crimson cheek; flesh white, tender and crisp. Tree vigorous and good bearer.

NORTHWESTERN GREENING. Large, round, greenish yellow; juicy, firm, good quality; splendid keeper, ships well. Attractive apple when packed in bushels, demands good prices, excellent baking apple. Should not be planted extensively, because crops are not so certain, due to blossoming early. Trees are extremely hardy, vigorous, bear very young.



Jonathan—A marvelous money maker.
Superior red strain

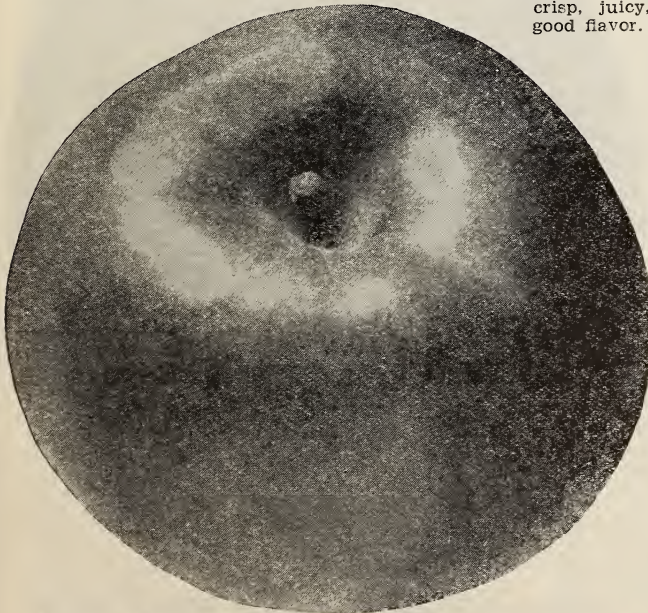
Red Gravenstein. This red sport is more attractive than Gravenstein. It differs from Gravenstein only in the solid dark red fruit.

Smokehouse. Large apple of super-fine flavor, excellent for eating, yellowish green mottled with dull red and with many russet dots; flesh firm, crisp, juicy and aromatic. Tree large, vigorous and reliably productive.

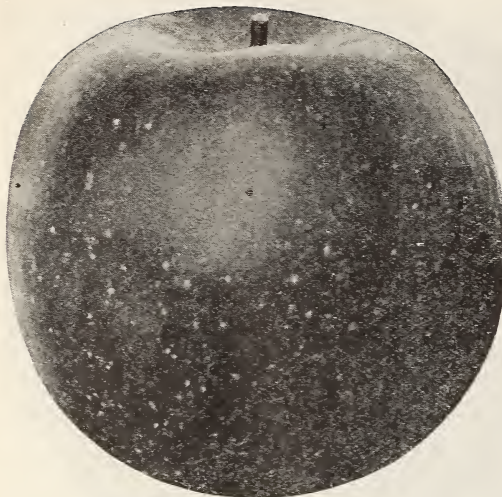
WEALTHY. Medium to large size; round; almost solid red; flesh white or a little stained; tender, crisp, juicy, fine grained, aromatic and very good flavor. Relative good keeper. One of the most profitable commercial apples. Tree is very hardy, withstanding unusually cold climates, vigorous, fruits at early age, bears regular and abundant crops. Tree somewhat dwarf, making a fine filler.

YELLOW DELICIOUS. A yellow apple with characteristics and shape of the well known Delicious apple. This apple has good flavor and is popular during the fall and early winter for fresh eating. We suggest planting this variety especially for roadside markets and home use. The flavor and condition of the fruit is at its best between September and January.

The tree is very thrifty, hardy, a good grower and is renowned for bearing at a young age. It is a prolific cropper and is sure bearer each year. On account of its early bearing habits, we recommend the planting of Yellow Delicious as a filler along with other varieties in your orchard as permanent trees. For large commercial orchards, we would suggest that you plant the well known Grimes Golden instead.



McIntosh Red—Highest flavored variety grown—always popular



Cortland—Worthy new variety

Winter Varieties

Albemarle Pippin. See Yellow Newtown for description.

BALDWIN. Large, round, bright red, crisp, juicy and rich; good late keeper, esteemed as an eating apple and for cooking. Quick and large grower; yields big crops. A wonderful shipper, standing long distances very successfully. The best northern apple for packing in barrels, fine cold storage apple, strong demand for carload shipments of Baldwins to European and South American markets. Brings high prices on foreign markets; is popular on the New England and Northern States markets. Grows to perfection in New England, New York, Pennsylvania, Michigan and Canada, but should not be planted south of the Mason-Dixon line. Baldwin is the leading commercial variety in the Northern States.

Ben Davis. Fine looking, large, round; yellow with red stripes; flesh white, juicy, sub-acid, coarse. Good for cooking, but on account of poor flavor not desirable for fresh eating. Finest keeper known. Can be kept in cold storage until July. Excellent shipper, usually packed in barrels. Best known export apple, always in good demand by European, South American and Asiatic buyers; highest prices. Grow Ben Davis on a commercial scale for export trade. Tree is a rapid grower, healthy, vigorous, bears at an early age, heavy cropper and a sure bearer.

CORTLAND. A promising new variety resulting from cross pollenization of McIntosh Red and Ben Davis, and inheriting the good qualities of each parent. Beautiful red apple, approximately the same size and fine flavor of the McIn-

tosh, but ripens about three weeks or a month later. Good keeper. Our buds were cut direct from the bearing Cortland in a prominent orchard at Kinderhook, New York.

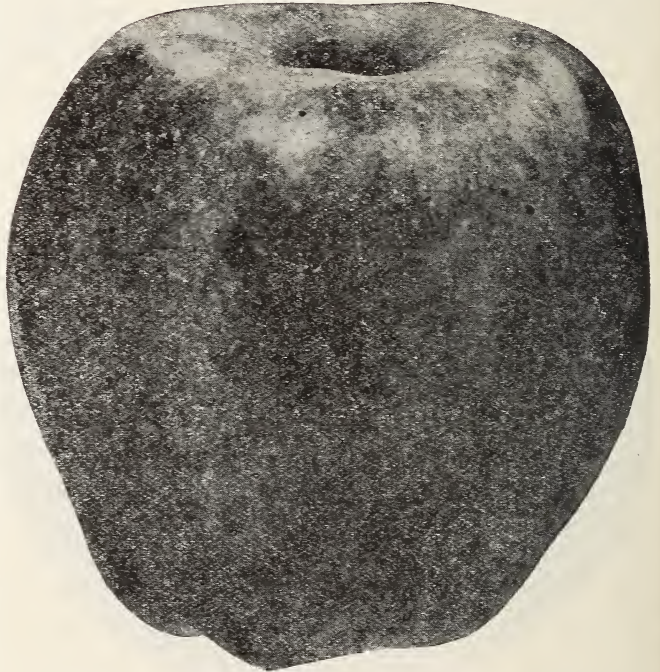
Ensee. Dull red, suggesting its Rome Beauty strain in size and shape; crisp, tender, yellow flesh and good flavor.

DELICIOUS. Of peculiar and distinctive shape; brilliant dark red, flesh fine grained, juicy, crisp and melting, flavor sweet, with a slight acid taste, with a delightful aroma, very highest quality. Excellent for eating, and the most popular fruit stand apple. Packs well in boxes and bushels, always bringing high prices on the leading markets, and in strong demand by the best trade. Being a good shipper, along with its high red color and fine flavor, has placed the Delicious among the topnotchers. Tree is hard, vigorous grower and a good, dependable cropper when properly pollenized. Suggest planting Grimes Golden and Jonathans as pollenizers with Delicious.

HARRISONS' RED DELICIOUS. An improved Delicious in color. Retains all the vigor and productivity of the Red Delicious but colors up weeks earlier than the ordinary strain. The color is a dark red without stripes. Earlier coloring enables the fruit to be picked earlier while it is firm, enabling it to keep better. This is our third season in offering this new apple and we would advise that you place your orders early as our stock is limited. 5c per tree extra.

Gallia Beauty. A Rome Beauty type of apple identical in every respect, except its earlier coloring qualities, recommended for commercial planting.

CANON (Black Ben). A handsome, large apple of perfect shape, with a smooth, glossy,



Harrisons' Red Delicious—Best red strain developed from Bud Selection. Dependable—plant for better cash profits

brilliant deep red skin; flesh is white, slightly tinged with yellow, firm, rather coarse, crisp, mild, sub-acid, fair flavor. Gano is one of the most popular export apples, being bought by South American trade at a premium in prices to others. Excellent keeper, standing long shipments as well as any other variety, usually packed in barrels. Tree is a strong, vigorous grower, with somewhat drooping branches, and comes into bearing young, producing regular and abundant crops. A sure money-maker for the export trade.

Hubbardston (Hubbardston Non-Such). Large, red striped, strong grower, bears well every year.

Lowry. Beautiful mahogany red, good, medium size, round oval shape, nearly sweet, mild sub-acid; excellent flavor, good shipper, long keeper, and sells at fancy prices in export as well as domestic markets. New popular commercial variety in Virginia.

MAMMOTH BLACK TWIG (Paragon). Extra large in size and round; skin smooth, yellowish covered with deep red, the general effect being dark red; flesh tender, tinged with yellow, crisp, sub-acid, aromatic, fine flavor, of excellent quality in every way. Very long keeper of great value. An important commercial variety in the East and a good money maker. Tree is vigorous and healthy, yields big crops, but it is necessary to plant Delicious or Jonathan as a pollinizer.

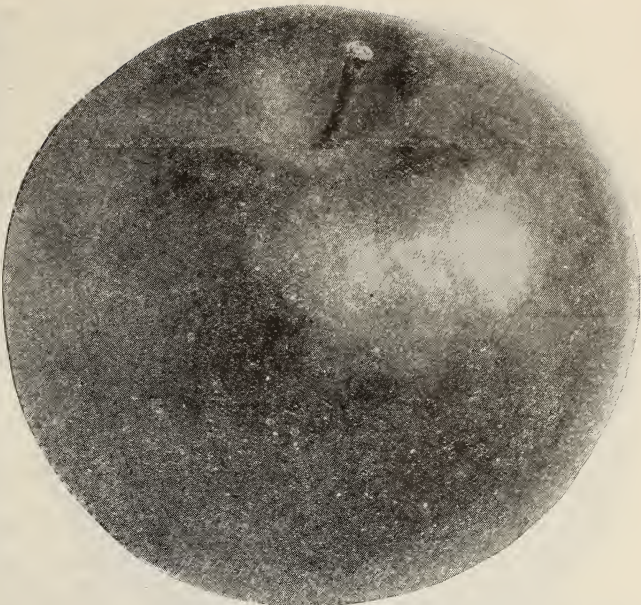
NERO. Here is an apple possessing great merit which has received far too little attention from planters of Eastern orchards. Deep red, with handsome shading; medium large size, of good quality and excellent flavor; one of the longest keepers, one of the best cold storage apples. Apples are graded and packed easily, do not show bruises and hold up well in storage, sell for good prices on the markets. Trees are hardy, extra strong growers, healthy and very productive, as well as sure croppers.

NORTHERN SPY. Large, bright scarlet-red, with yellow markings. Flesh juicy, rich, crisp, tender, aromatic and highly flavored. Tree a strong, erect grower, very healthy, extremely hardy, and free producer. Blossoms are produced late in the spring, thus escaping frosts. Trees are slow in coming into bearing, but the quality of the fruit largely overbalances this difficulty. Popular old commercial variety in the Northern States, and brings good prices on the Eastern markets. Should not be planted south of Southern Pennsylvania. Northern Spy is one of the best varieties on which to top bud or top graft certain weaker growing varieties.

Paragon. For description see Mammoth Black Twig.

Red Pearmain. Medium size, yellowish striped with light and dark red, sub-acid, good flavor.

ROME BEAUTY. Large, round; mottled and striped in different shades of red; flavor and quality way above the average; appearance



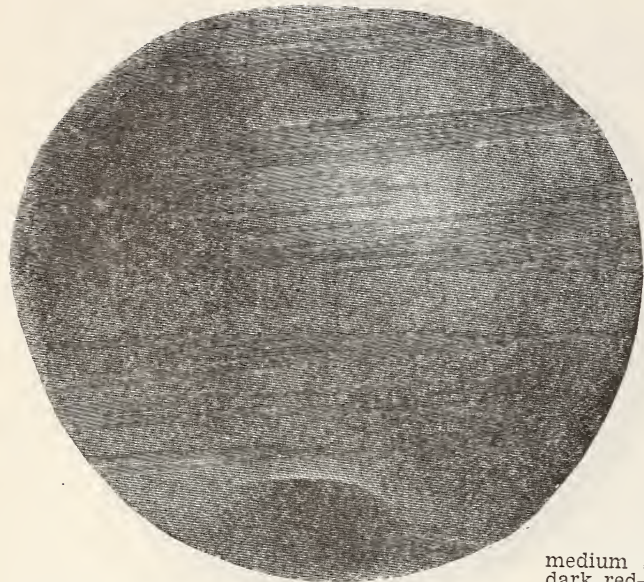
Red Rome Beauty—Best red strain of all Rome types.
Ideal commercial variety

and size are its valuable points; always in strong demand and brings highest prices. Keeps in good condition until May and June. With an established reputation due to real merit, Rome Beauty is a variety Eastern orchardists should plant largely. Good, hardy, strong grower; blooms late; bears heavily every year; is adapted to a wide range of soils, elevations and conditions. Reliability, due to being frost-proof, strong growing, sure bearing, unusual demand, with high prices on the leading markets, especially from the chain stores, make it a favorite with the growers. Fine quality and long keeping for use and for handling make it popular with consumers and dealers. Most attractive when packed in boxes and bushels.

RED ROME BEAUTY. An improved Rome Beauty, identical in vigor and production, color of fruit much darker and solid red, producing a higher percentage of fancy apples than the ordinary strain of Rome Beauty. This strain will eventually replace the ordinary Rome Beauty, because of its improved coloring characteristics. We advise commercial plantings.

Roxbury Russet. Large, firm, moderately tender, juicy, sub-acid, good flavor. Skin almost smooth, but covered with greenish to yellowish brown russet; long keeper. Most popular russet apple, tree hardy, strong grower, and a prolific bearer.

RHODE ISLAND GREENING. Large, greenish yellow, flesh crisp, juicy, quite acid, firm, fine grained, tender, and of very fine flavor and quality. This large and superior Northern winter apple is famous and is highly prized for eating and cooking; also valuable commercial variety, an excellent keeper, and a popular barrel apple; always brings good prices. Generally planted in New England, New York, Michigan and Canada, but not advisable to plant south of the Mason-Dixon line.



Stayman Winesap—The leader—Best red apple grown. Superior strain is a bright red type, almost 100% attractive Red color when properly grown. A huge money maker

STARK. Long keeper and a reliable commercial sort. Fruit large, round, greenish yellow, with red stripes; flesh yellow, crisp and mildly acid; valuable as a keeper. Excellent baking apple and always sought by the larger baking concerns and hotels; brings premium prices. A good variety for the commercial orchard because the tree is hardy, thrifty, healthy, one of the strongest growers, a regular bearer; very productive. Desirable trees to top work other sorts on.

STAYMAN WINESAP (Stayman). Medium large to large; green and yellow, almost hidden by deep dark red stripes; flesh yellow, not in the least mealy; plenty of juice; firm, tender rich, sub-acid, aromatic, quality the best and finest. Splendid late keeper, but mellows for use in the fall. Tree a quick and large grower; bears young, often producing a barrel to a tree when five years old. Necessary to plant Grimes Golden along with Stayman for proper cross-pollinization; bears every year; crops uniformly heavy. Stayman is now planted in nearly all the new orchards in the East, to a large extent. One of the most popular apples grown and demand far exceeds the supply, always bringing highest prices on the large markets; also popular roadside market variety.

Turley. A seedling of the Winesap which it somewhat resembles. Fruit rounded conical in shape, much larger than the Winesap, smoother skinned and deeper and richer in color; juicy and rich flavor. Tree very hardy and comes into bearing early.

Twenty Ounce. Very large, yellow striped with red; fine quality; good keeper.

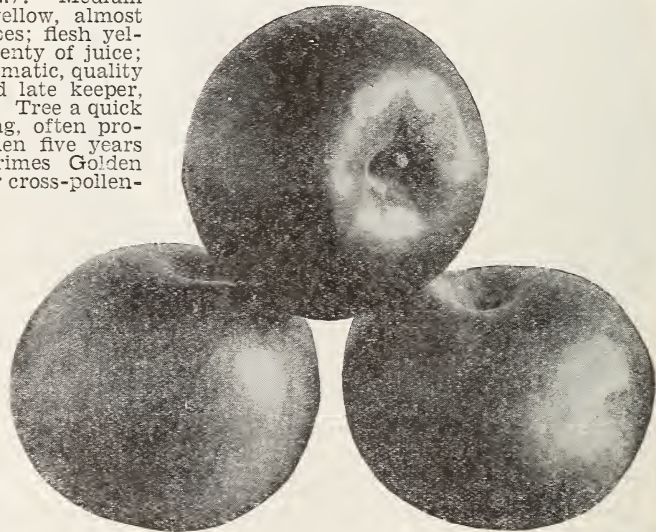
Wolf River. Exceedingly large, handsome, bright yellow, skin mottled and blushed with deep red and broad stripes of bright carmine, fair quality, long keeper and excellent for cooking.

Winter Rambo. Medium size, greenish yellow color; thick skin.

Wagner. A superior large apple of beautiful bright red; fine texture, high flavor and excellent quality. Tree bears early, and is a reliable cropper.

Winter Banana. Extra large, golden yellow, and beautifully shaded with bright crimson red; firm, fine grained, rich, sub-acid. The name suggests the high flavor. Tree thrives nearly everywhere. Should be packed in bushels or boxes and sold soon after picking.

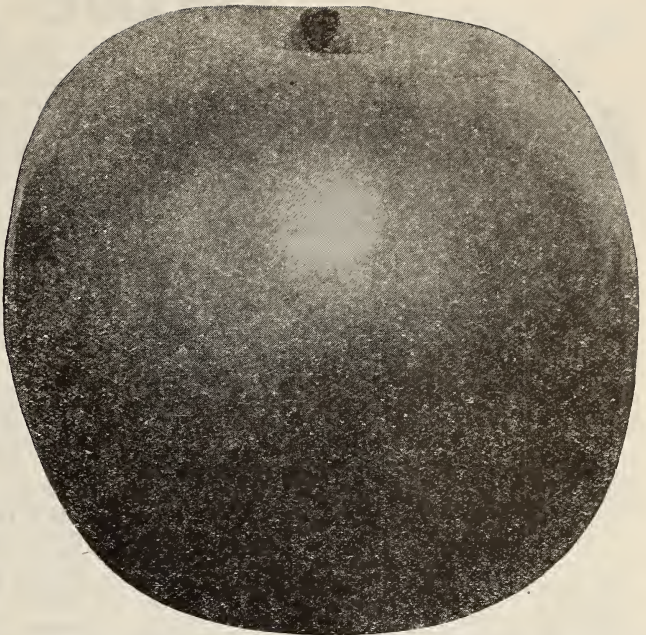
WINESAP. Sometimes called Old Winesap and Virginia Winesap; medium size, oblong, smooth, and a fine dark red—one of the best red colored apples grown; flesh yellow, crisp, tender, very juicy, aromatic, firm and excellent flavor. Very long keeper and considered the best cold storage variety, keeping until July. A strong grower; comes into bearing early and is remarkable for its regular and abundant crops. Grimes should be planted with Winesap for proper pollinization. Winesap has the reputation, being a leader for many years; the name is familiar to everyone. Best box apple grown, which has made it famous in Oregon and Washington; also a wonderful bushel and barrel apple, being extensively grown in Virginia for export and domestic trade. Supply of Winesap is always limited, with heavy demand from the fancy markets, causing Winesap to be one of the highest average priced apples commercially grown.



Winesap—Best known international variety. Always a gold profit maker

Yellow Newtown or Albemarle Pippin. Large, round, or a little lop-sided, ribbed and somewhat irregular, long keeper. Tree a slow grower and light bearer in poor soils, but right soil and care bring a world-beater when it will thrive, but no good at all in soils and under conditions not adapted to its exacting requirements. Famous in section around Crozet, Va., and sections of Oregon and Washington. Wonderful box apple, and always brings highest prices.

YORK IMPERIAL. Medium to large size, round irregular, greenish yellow overlaid with bright red; flesh tender, firm, crisp, and high flavor; wonderful keeper; can be kept in cold storage until June. Tree is a vigorous grower, strong and healthy; an unusually heavy bearer. Other varieties may fail to set fruit and suffer from off years, but York Imperial, with proper culture methods, will bear consistently from year to year. York Imperial is the most popular winter variety for cooking; also good for eating; has a national reputation as a strong leader, and favorable demand with average good prices. York Imperial is a wonderful apple for packing in bushels for the domestic trade; is possibly the largest and best selling variety packed in barrels for the export trade, especially European and South American markets. Its long keeping, long distance shipping qualities, attractive color, and being a heavy cropper established York Imperial the leading commercial apple for Southern Pennsylvania, Maryland, West Virginia and Virginia, and generally considered as the best average money maker.



York Imperial—Highly developed red strain. Most popular and the greatest money maker for the famous Pennsylvania, Maryland, West Virginia, Virginia districts

Yellow Bellflower. Large, yellow, good flavor.

Crab Apples

Crab apples form a valuable crop, both in home and commercial orchards, as they are much desired for preserves and jellies, and in market bring good prices. The trees are particularly desirable for planting in the home grounds as they are rather small, distinctly ornamental and beautiful, whether in flower or fruit.

Florence. Summer. Carmine-red, very hardy.

Hyslop. Deep crimson, large size, and of good quality. Fine for all kinds of preserving, canning, etc., and good to eat fresh. Tree handsome.

Martha. Bright yellow, shaded with red; flavor tart but mild.

TRANSCENDENT. Yellow striped with red; good for eating fresh and fine for preserving. Best of all crab apples. Tree large; quick grower.

Whitney. Largest crab apple; smooth, glossy, green, splashed with red; good bearer.

**Crab Apple prices
same as standard
apple trees**



Transcendent Crab Apple—leading Crab apple—ideal for home gardens

CHERRIES

For Home or Market



Large Montmorency—Greatest sour cherry

Harrisons' cherry trees are hardy, vigorous and bear great crops. Cherry trees should be largely planted.

There is a world of difference in the growth and habits of sweet and sour Cherry trees. In general, it can be said that the sweet do best on high land and in mountainous districts, while the sour reach their greatest perfection down lower, and on lighter soil. If there is a choice, select a light loam, gravel or similar soil, although Cherries will thrive in any place that is not damp. They will not succeed to any extent in a seepy place that is not drained.

Sour Cherries

A good cherry orchard is a very profitable investment, on account of the rapidly increasing demand for fruit juices, there is a great outlook for the cherry grower. Cherries are easy to grow and are very heavy annual bearers. We have a good supply of the leading varieties and they are priced in the reach of every grower.

Dyehouse. Very early summer, ripening ten days prior to Early Richmond; medium size, sour, good keeper, fine quality, heavy bearer. Popular for pies and especially canning. Tree is remarkable for its hardness.

Early Richmond. Early summer. Very sour, medium size, bright red, being one of the most valuable and popular cherries, unsurpassed for cooking purposes. A good old variety which yields such marvelously heavy crops. Tree is the most hardy of all cherries, being uninjured by the coldest winters; slender in growth, with a roundish, spreading head, being a sure cropper and very productive.

English Morello. Midseason. Fruit sour, large elongated almost blackish red when fully ripe; very rich, acid, juicy and good. Splendid pie cherry, and demanded by fruit juice manufacturers. Tree is very hardy, medium size, but exceedingly productive.

May Duke. Very early. Sour, large, red, juicy, rich, its acidity pleasantly tempered to the advantage of sensitive teeth; superior quality, very productive. An old-time favorite.

MONTMORENCY (Large Montmorency).

Midseason, sour, large, sound and red, slightly acid; flesh is very tender and of unusually good quality, being by far the best variety of sour cherry grown. The best shipper of all sour, which with its wonderful carrying ability for long distance shipments, along with its handsome, appetizing appearance and large size, has made Montmorency in a class by itself, always commanding the highest market prices, either on the city markets or from the commercial canneries. Montmorency is famous in Wisconsin, Michigan, New York and West Virginia for canneries.

Sweet Cherries

What fruit is more pleasing than a sweet cherry. The ideal fruit to plant in the backyard. We have a good supply of first class trees in the following varieties:

Bing. Very large, dark brown, almost black; flesh firm, sweet, rich and delicious.

BLACK TARTARIAN. Very large, sweet, purplish black color, juicy, rich flavor, heavy bearer and most profitable sweet variety grown.

Governor Wood. Large, light yellow, marked with red, sweet flavor.

Lambert. Extra large, sweet, jet black, high flavor, enormous crops, good shipper. Popular commercial variety.

NAPOLEON (Royal Anne). Large, pale yellow with bright red cheek, sweet excellent flavor, prolific bearer. Famous canning variety of the Pacific Coast.

Schmidt (Schmidt's Bigarreau). Large, sweet, deep black, tender, fine flavor.

Windsor. Large, sweet, almost black, fine quality. Valuable late variety.

YELLOW SPANISH. Large, sweet, yellow with red tinge. One of the most beautiful and popular of the light colored cherries. Heavy bearer.

PRICES OF HARRISONS' SWEET CHERRY TREES

	1 to 9 trees	10 to 49 trees	50 to 300 trees
5 to 6 feet.....	\$.70	\$.60	\$.50 each
4 to 5 feet.....	.60	.50	.45 each
3 to 4 feet.....	.50	.45	.40 each



Black
Tartarian—
Outstanding
sweet cherry

PRICES OF HARRISONS' SOUR CHERRY TREES

	1 to 9 trees	10 to 49 trees	50 to 299 trees	300 to 599 trees	600 to 1000 trees
4 to 5 feet.....	\$.45	\$.35	\$.27	\$.23	\$.20 each
3 to 4 feet.....	.35	.27	.22	.18	.15 each
2 to 3 feet.....	.30	.23	.18	.15	.12 each

For larger quantity than 1000 trees, write for special prices. Can be assorted Apples, Peaches, Cherries, Pears, Plums or other fruit trees.

PLUMS

Plums are easy to grow, few people realize how easy it is to grow luscious, edible plums. They thrive and bear readily on most any land that is not too wet. Below is a selected list of varieties chosen for their size, appearance and flavor of their fruit, as well as the hardiness and strong growing characteristics of the trees.

We have some exceptionally good plum trees to offer this year, all budded on whole root seedlings. With our low prices it will pay you to set out a few.

ABUNDANCE. Early, large, lemon-yellow, hardy, productive.

Bradshaw. Midseason, large, dark violet-red, juicy, excellent flavor, desirable for canning.

BURBANK. Midseason, large cherry-red, high quality, very productive. Popular commercial variety.

German Prune. Late, large, dark purple, sweet. Good for canning and drying.

Italian Prune (Fellenberg). Late, medium size, dark purple, delicious. Fine for drying.

RED JUNE. Very early, medium size, deep vermilion-red, good.

SHROPSHIRE DAMSON. Late, medium size, dark purple, very productive. The best for preserving. The popular old-fashioned Damson variety.

Wickson. Late, very large, deep maroon red covered with white bloom, flesh firm, meaty, yellow, rich, aromatic, cling.

PRICES OF HARRISON'S' PLUM TREES

	1 to 9 trees	10 to 49 trees	50 to 299 trees	300 to 599 trees	600 to 1000 trees
5 to 6 feet.....	\$0.55	\$0.45	\$0.32	\$0.28	\$0.25 each
4 to 5 feet.....	.45	.35	.27	.23	.20 each
3 to 4 feet.....	.35	.27	.22	.18	.15 each
2 to 3 feet.....	.30	.23	.18	.15	.12 each

For larger quantity than 1000 trees write for special prices. Can be assorted Apples, Peaches, Cherries, Pears, Plums or other fruit trees.



Red June Plums—Best early commercial variety

APRICOTS

PRICES OF HARRISON'S' APRICOT TREES

	1 to 9 trees	10 to 49 trees	50 to 300 trees
4 to 5 feet.....	\$0.45	\$0.35	\$0.27
3 to 4 feet.....	.35	.27	.22
2 to 3 feet.....	.30	.23	.18

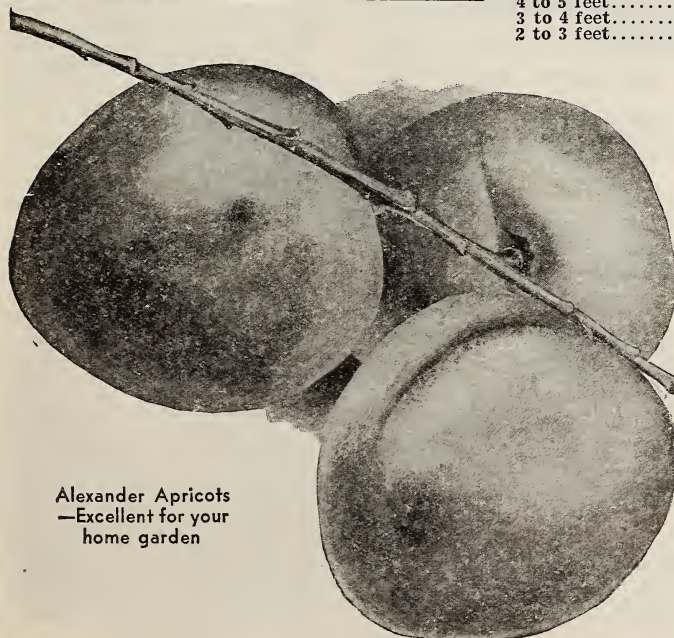
The apricot is one of the most delightfully luscious fruits grown, when eaten fully ripe and fresh from the tree. It is remarkable that such a rich and beautiful, golden, sweet fruit is not planted more, especially since it ripens just after the early cherries and before the best early peaches. Apricots succeed in many localities and will stand more winter cold than peaches. They usually begin to bear two years after planting. Below is a select list of varieties offered at the lowest prices in years.

Alexander. Early, prolific, freestone, orange with red blush Russian variety. Hardy where peaches cannot be grown.

Early Golden. Small, pale orange, juicy and sweet. It is a hardy, prolific bearer; ripens first of July.

Moorpark. Summer. Early, yellow with red cheek, juicy, sweet, rich, freestone. Very productive; a European variety.

Superb. Medium size, light salmon-colored fruit. Hardy.



Alexander Apricots
—Excellent for your home garden

PEARS

Pears Are Delicious and Profitable

The value of this fruit is being more and more appreciated by the people who really have become acquainted with it. On the leading markets during the past few years pears have been bringing good prices. If growers would specialize in this fruit they would be well repaid for their efforts as high prices are always obtainable for choice pears. This year we have a large supply of first-class trees in all the leading varieties, in fact these trees are among the finest we ever grew. All our pear trees are budded on whole root blight proof seedlings.

Varieties to Plant

Bartlett is by far the best pear grown for home and commercial orchards, it is large and of a highly



Bartlett—Best pear grown, always popular—most popular variety

delicious flavor. In planting your orchard be sure to plant heavily to Bartlett. Other desirable varieties for planting are Clapps, Kieffer and Seckel.

Summer Pears

An orchard of Bartlett pears is a source of abundant income. The trees are sturdy, and bear heavy loads of delicious fruit which is easily sold.

BARTLETT PEAR. For home, for canning, for market, the best.

A golden-colored pear, with a red cheek on most specimens. Bartlett mellows and is excellent for eating very early in the fall, yet when picked a week before it is ripe, and properly stored, will keep till late. Flavor delicious and musky; flesh buttery, rich and juicy. One of the finest pears that grows to eat raw. A mingling of the flavor of Bartlett Pear and quince gives about the finest taste of any food this world's folks have. Bartlett trees bear early, produce enormous crops, and are not nearly so subject to damage by insects and disease as some other sorts. The trees do especially well with high culture.

Bartlett Pears always sell on the markets even when other sorts are not in great demand. The fruit is so handsome and appealing that it pays to pack it in fancy containers. Bushels or bushel boxes are best adapted. The fruit ought to be carefully sorted and graded, wrapped in tissue

paper, and arranged in the container practically the same way that you pack apples. Pears are sometimes packed in peach carriers, and sell to good advantage. Plain fruit can be sold without wrapping, in small baskets or boxes.

One or two Bartlett Pear trees in the city yard will furnish a considerable amount of fruit; a half dozen will supply the family with fresh fruit and a surplus for preserving.

Clapp's Favorite (Clapp). Very large, long, lemon-yellow with brown dots; richly flushed with russet-red on sunny side; fine texture, melting, buttery, juicy, with a rich, sweet, delicate, vinous flavor. Thrives where other varieties fail. Tree hardy and very productive.

Autumn Pears

ANJOU (Buerre d'Anjou). Being one of the best known, most popular and profitable fall pears. Large, green in color, somewhat yellow when ripe, buttery, melting, rich vinous, good flavor. Tree vigorous, hardy, prolific bearer.

Duchess (Duchess d'Angouleme). Very large, dull greenish yellow, spotted russet, flesh white, rich, buttery, juicy; excellent flavor. Tree somewhat dwarf, but a most dependable bearer. Profitable commercial pear.

KIEFFER. Fruit large to very large; skin yellow, with light vermilion cheek. Flesh brittle, very juicy. Most popular canning pear. Keeps well.

Garber. Extra large, even larger than Kieffer; poor flavor, but excellent for canning. Tree is hardy, strong grower; bears at an early age, producing large crops. Garber is a good pollinizer for Kieffer as well as other varieties.

SECKEL. A beautiful and delicious little pear, known everywhere and an old-time favorite; skin yellowish brown with deep brownish red cheek; flesh very fine grained, sweet; one of the richest and highest flavored pears grown. Tree rather dwarf, slow, but stout and erect, bears prolific crops.

Sheldon. Medium size, flesh slightly coarse, melting, juicy, vinous flavor.

Worden-Seckel. A seedling of Seckel, equal in quality and productiveness, but decidedly superior in size, color and form.

Winter Pears

Buerre Bosc (Bosc). Large size, fine quality, brings highest market prices.

Lawrence. Medium to large; golden yellow, with brown dots, melting; pleasant, aromatic; good quality. Unsurpassed as a winter variety.

PRICES OF HARRISONS' PEAR TREES

	1 to 9 trees	10 to 49 trees	50 to 299 trees	300 to 599 trees	600 to 1000 trees
5 to 6 feet.....	\$0.55	\$0.45	\$0.32	\$0.28	\$0.25 each
4 to 5 feet.....	.45	.35	.27	.23	.20 each
3 to 4 feet.....	.35	.27	.22	.18	.15 each
2 to 3 feet.....	.30	.23	.18	.15	.12 each

For larger quantity than 1000 trees, write for special prices. Can be assorted Apples, Peaches, Cherries, Pears, Plums, or other fruit trees.

NECTARINES

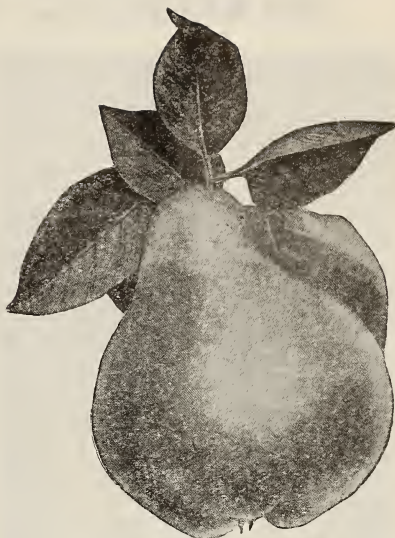
There is a mistaken idea that the nectarine is a cross between the peach and something else, while it is really nothing more or less than a smooth skinned peach. The trees bear fully as well as the peach, and for canning, drying and shipping, it has so many points in its favor that it is difficult indeed to comprehend why planters have not engaged in nectarine culture more extensively than they have. The melting, juicy texture of the nectarine and its delicious flavor furnishes one of the most delightful fruits for eating during the summer. Plant a few trees in your home orchard this year.

Red Roman. Greenish yellow, red cheek, flesh golden.

Boston. Bright yellow, red cheek; flesh yellow.

PRICES OF HARRISON'S' NECTARINE TREES

	1 to 9 trees	10 to 50 trees
5 to 6 feet.....	\$0.55	\$0.45
4 to 5 feet.....	.45	.35
3 to 4 feet.....	.35	.27
2 to 3 feet.....	.30	.23



Orange Quince—Desirable for canning and preserving

QUINCES

The Quince is of late attracting a great deal of attention as a market fruit. It is hardy and compact in growth and requires but little space. It is productive if handled properly and gives regular crops, coming into bearing in about two or three years and continues productive, if well managed, for forty years or more. The fruit is much sought after for canning, preserving and for jellies. It gives a delicious flavor to the apple, cooking in any manner. They should be planted ten to sixteen feet apart on deep, rich soil.

Champion. Late, very large fine quality, long keeper.

Orange. Late, large, bright yellow, excellent flavor, productive, and rarely fails to produce a crop. Best canning variety. Popular Wayne County (New York) strain.

PRICES OF QUINCE TREES

	1 to 9 trees	10 to 50 trees
4 to 5 feet.....	\$0.60	\$0.50 each
3 to 4 feet.....	.50	.45 each



Schley Pecans—Best pecan—will grow satisfactorily in Middle Atlantic States

NUT TREES

Are Ornamental and Profitable

BUTTERNUT (*Juglans cinera*). Large nut, with a sweet, nutritious kernel.

	1 to 9 trees	10 to 50 trees
2 to 3 feet.....	\$1.00	\$0.90

SCHLEY PECAN. Medium to large nuts; oblong, thin shell, rich flavor. Good grower. The best pecan grown.

	1 to 9 trees	10 to 50 trees
2 to 3 feet.....	\$1.00	\$0.90

BLACK WALNUT (*Juglans nigra*). Rapid grower, spreading branches, large, delicious nuts, prolific bearer.

	1 to 9 trees	10 to 50 trees
5 to 6 feet.....	\$2.00	\$1.75

ENGLISH WALNUT (*Juglans regia*). Thin shelled, large, delicious nuts, producing heavy crops and demanding good prices. Most popular walnut grown.

	1 to 9 trees	10 to 50 trees
2 to 3 feet.....	\$1.00	\$0.90

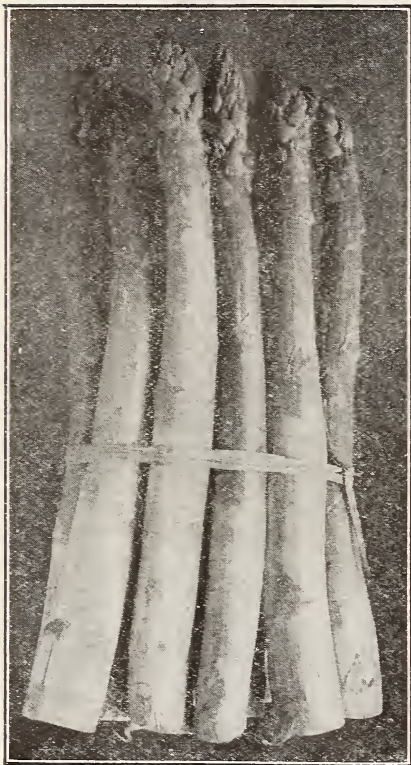
FIGS

Brown Turkey. Medium to large size; copper brown skin, flesh white. Not hardy North.

PRICES

2 to 3 feet...75c each, 10 for \$6.50

HARRISONS' CHOICE ASPARAGUS



Mary Washington Asparagus—Sensational new variety which has greatly outclassed all others

Being the first vegetable to come in the spring it always brings a high price on the markets. Stocks being delicious and very healthful, every garden should have a generous supply and when properly set and cared for will last a lifetime.

The Famous Mary Washington— Plant This Pedigreed Strain

There is no variety of Asparagus as good as Mary Washington and whether you are growing for home use only or for market you cannot afford to grow any other. This wonderful new Asparagus was developed and introduced by the U. S. Department of Agriculture and although it is just a recent introduction it has become famous the country over.

Rust Resistant—Profitable

Growers everywhere are discarding all other varieties in favor of the famous Mary Washington, because it is earlier, the stalks are larger, more tender and more productive than any other variety and more highly immune to rust, which

means that one planting will produce profitable crops for many years.

Large—Early—Tender—Juicy

Asparagus buyers now demand Mary Washington and are willing to pay fancy prices to get it. The demand for Mary Washington is tremendous because when it is once eaten, no other variety will give satisfaction. The stalks are purplish green color, large, tender and juicy. A very rapid grower which means many cuttings.

How to Grow Asparagus

Asparagus is easy to grow and should be in every garden because it thrives everywhere. Spring is the best time to plant as soon as the soil can be worked into good condition. Dig or plow a trench ten inches deep, place the plants in this trench and spread the roots, then cover with two inches of soil, when the new growth comes through fill in two more inches and continue until trench is full. For garden culture Asparagus may be planted eighteen inches apart each way, but for field culture plant two feet apart in the row with the rows four feet apart. Cultivate and hoe frequently.

Plant Heavy Two Year Roots

We recommend planting the heavy two-year roots for best results, these plants come into bearing earlier and bear heavier crops than one-year plants.

PRICES OF HEAVY 2 YR. MARY WASHINGTON ASPARAGUS ROOTS

25 Roots	100 Roots	250 Roots	500 Roots	1000 Roots
\$0.50	\$1.30	\$2.50	\$4.25	\$7.50

PRICES OF STRONG 1 YR. MARY WASHINGTON ASPARAGUS ROOTS

25 Roots	100 Roots	250 Roots	500 Roots	1000 Roots
\$0.40	\$1.00	\$2.00	\$3.25	\$5.50

For those who prefer Palmetto and Martha Washington varieties we have some extra fine one and two year roots that we can supply at the same prices as Mary Washington.

MARY WASHINGTON ASPARAGUS SEED

For those who prefer to grow their own asparagus roots we are offering the true strain of Mary Washington seed. These seeds are of high quality and good germination, they are the same that we use in our asparagus nursery.

PRICES—1/4 lb. 25c; 1 lb. 65c; 5 lbs. \$2.50; 10 lbs. \$4.50; 100 lbs. \$40.00.

HARRISONS' SELECTED GRAPE VINES

Grape vine production has long been a specialty with us and many of the largest and most profitable vineyards in the country were planted with vines grown in our nurseries. The soil on which our vines are grown is especially adapted to root growth. Our propagating stock is selected from healthy, vigorous, heavy bearing vines. This results in a vine that will give 100 per cent satisfaction in your vineyards.

Grape Vines Are Profitable

The increasing demand for grape juice and other extracts makes this a big money crop for the farmers. Get your vineyard started now and be ready for the increased demand for grapes. For commercial vineyard Concord is by far the best.

The Best Home Fruit

Grapes are one of the most productive fruits we have. They can be grown in small spaces and trained up over buildings or fences. They are easy to grow and require very little attention except pruning. By making your selection from the varieties which we offer you can grow extra select grapes for the home. No home should be without a few varieties.

AGAWAM. Large dark red or brown berries, thick skin, aromatic flavor. The vine is a strong rank grower, hardy and productive. Ripens with Concord.

CACO. A comparatively new grape that is outstanding in flavor. It is a healthy grower and bears abundantly in all sorts of climate and soil. The grapes are large in size and have a wine red over amber color. Ripens just before Concord. A very worthwhile variety to plant in the home garden.

CATAWBA. Large bunches of dark red berries, flesh pulpy with rich vinous flavor. Best quality for table use. Late.

CONCORD. The most popular grape grown. It adapts itself to varying conditions and is grown in most every State in the Union. Large compact bunches of dark purplish black berries. The berries



Concord — Moore's Early

are covered with a rich bloom, skin is tender, but is sufficiently firm to carry to distant markets; flesh is juicy, sweet and tender. Vine is a vigorous grower, hardy and very productive. Midseason, old reliable commercial variety. Best money maker.

DELAWARE. Bunches medium size, full of large berries, which are sweet and of extra good quality. Late.

MOORE'S EARLY. Extremely dark purple, almost black. Bunches medium size, but berries are large. Flavor and quality are very much like Concord but ripens much earlier.

NIAGARA. The best of the standard, light colored grapes. Bunches of large greenish white berries, changing to a pale yellow when fully ripe. Ripens about the same time as Concord or a little earlier.

WORDEN. Large bunches of black colored berries, very highly flavored and of large size, excellent for table use. Ripens five to ten days earlier than Concord.



Niagara—Best white grape grown

PRICES OF 2 YEAR No. 1 GRAPE VINES

	1 to 9	10 to 49	50 to 299	300 to 599	600 to 1000
Agawam	\$0.25	\$0.15	\$0.12
Caco40	.35	.25
Catawba25	.15	.12
Concord20	.10	.07	\$0.06	\$0.05
Delaware25	.15	.12
Moore's Early .	.25	.15	.10	.08	.07
Niagara25	.15	.10	.08	.07
Worden25	.15	.12

PRICES OF 1 YEAR No. 1 GRAPE VINES

	1 to 9	10 to 49	50 to 299	300 to 599	600 to 1000
Concord	\$0.20	\$0.10	\$0.06	\$0.05	\$0.03
Moore's Early .	.25	.15	.08	.07	.05
Niagara25	.15	.08	.07	.05

For Larger Quantities write for Special Prices.

HARRISONS' STRAWBERRY PLANTS

Big Yields—Fancy Fruit—Large Profits



Better plants make better crops

List of Selected and Tested Strawberries

EARLY STRAWBERRIES

Blakemore. The new early shipping berry that was developed by the United States Department of Agriculture. It has been thoroughly tested in nearly all the strawberry producing centers and is rated as the best new berry in many years. Blakemore is a scientific cross between Premier and Missionary, it makes an even more vigorous growth than Missionary. We believe it is the coming early berry to plant in those sections which are distant from the markets.

DORSETT. A product of the master plant breeders of the U. S. Dept. of Agriculture. Dorsett is destined to become a favorite berry after it becomes better known. Its ripening period begins at the same time as Premier, but has a longer season and larger yield. The quality of fruit is extraordinarily good and has a highly pleasing appearance. This variety is vigorous growing and under normal conditions makes a heavy matted bed. We believe that it will pay everyone interested in strawberries to test this variety out along with Fairfax. The experimental results so far given the Dorsett ranks it as the best or one of the best varieties of strawberries ever originated.

FAIRFAX. A new promising early berry that was originated by the U. S. Dept. of Agriculture. It has been tested in Maryland, Delaware and New Jersey and has given exceptionally good results both in quality of fruit and yields. Those who have eaten it claim it is a better berry in quality than the leading old standard varieties. In production tests it has outyielded the standard commercial kinds. Its best points are: large size firm berries of attractive color, superior in flavor, vigorous and healthy foliage, large yields per acre, and resistant to frost. We advise every grower to try this variety out in a small way as we believe that it is going to make a highly profitable berry.

Klondyke. An old-time variety that has been grown in the Southern and Eastern States. At one time it was the most profitable early berry, medium size, good quality, moderately productive berry.

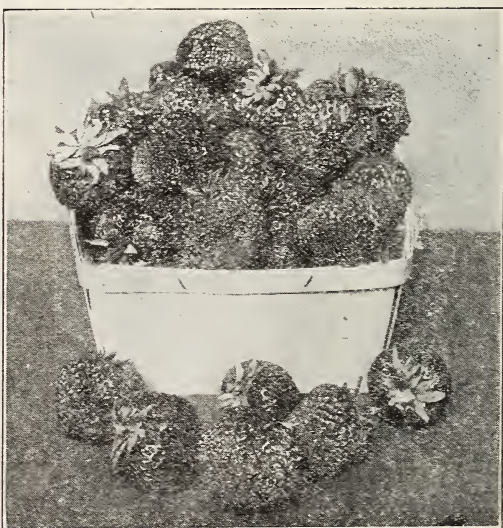
Missionary. Medium size, of good color and fine flavor. It is extensively grown in the South because of fine appearance and good keeping quality. A good commercial or home berry.

Plant Harrison's Quality Strawberry Plants for profit and pleasure. Since 1884 we have experimented with strawberries, seeking the perfect development of such varieties that would prove most satisfactory both to commercial and home growers. Our soil and climate of the Eastern Shore of Maryland makes it the ideal plant-growing section of the United States.

Our strawberry plants are recognized by authorities as standard. The rich, fertile soil that is unequalled anywhere and a mild winter climate tempered by the Atlantic Ocean, give our plants a vigorous growth and sturdy root systems, which assures their uninterrupted growth after transplanting.

Strawberries Pay

Strawberries are a very profitable crop; many growers have made over \$1,000.00 per acre, but this is when everything is favorable. We believe, however, that the growers who plant our selected varieties and care for them in an up-to-date manner will make a good profit. He will not likely make \$1,000.00 a year per acre average, but strawberries even in an unfavorable year will make some money for the grower, and in a good year when prices are high the grower will make a fancy profit. What other general farm crop will do this for you? More money in one acre of strawberries in a good year than in fifty acres of other general farm crops.



Big Joe—Always popular and dependable

PREMIER (or Howard 17). The most perfect early berry grown today. It is in a class by itself, of all the early berries grown this is the only one of any importance. Premier fruits extra early, when berries are selling at a high price. It is a big yielder of big bright, red berries of fine flavor. Premier commences to fruit extra early and can be picked over a larger period than other early varieties. It thrives on most any type of soil and is a rampant plant maker. The above characteristics, together with its good keeping qualities, make it ideally adapted for either commercial plantings or home use. Plant Premier for Big Profits.

Senator Dunlap. Big, uniformly shaped berries of handsome dark red color. Suitable for home use or market.

MIDSEASON STRAWBERRIES

BIG JOE. The best midseason berry grown. It is a worthy companion for Premier, the best early berry and Chesapeake the best late. Big Joe is a heavy producer of brilliant red berries of extra fine flavor and firm enough to withstand long shipments. The plants are good growers and heavy yielders. This variety succeeds on all types of soil, but does extra well when given good care and fertility. Be sure to include some Big Joe in your planting this spring.

LATE STRAWBERRIES

Aroma. Clean, healthy, hardy growing plants, does well on most soils. Fruit large, deep red, excellent quality for home use or market.

CHESAPEAKE. The favorite late berry with the majority of growers. It is a good producer of very large berries of good quality that withstand shipments to distant markets. All growers seem to make money on this variety when grown under conditions suitable for it, on most any highly manured soil it will grow successfully. We believe you cannot go wrong by planting this one, its large crops of fancy berries will bring the highest prices on the markets. Equally as good for home use.

Gandy. The favorite late berry in many localities. Large size and handsome appearance make it command highest prices on the market. Not quite as productive as some of the other berries, but its appearance and quality offset this. Good for either home use or commercial plantings.

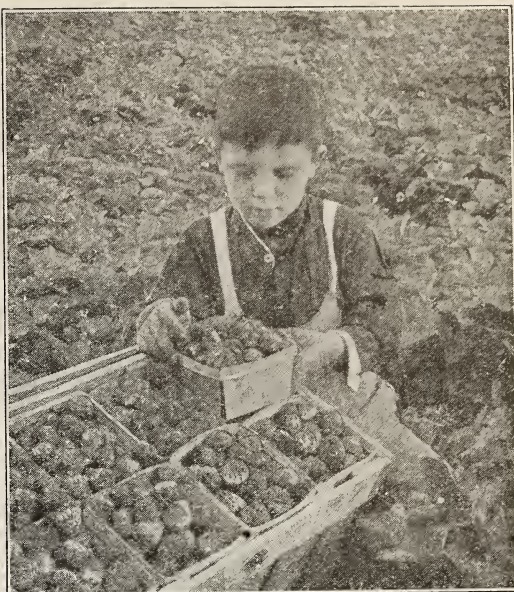
Lupton. A good late variety, large handsome, attractive berry commanding good prices on the markets. It is similar to Chesapeake in many ways and is not quite so particular about its soil requirements. A favorite in many localities.

Wm. Belt. An extra good quality late berry for home use or market. Its flavor is extraordinarily good, the berries are medium to large size, ideal for home use.

EVERBEARING STRAWBERRIES

MASTODON. The best everbearing strawberry known. It produces a wonderful crop of full-sized berries the first autumn after planting and follows it up with another heavy crop the next summer and fall. With this variety you harvest three big crops in the same time that is used to procure one crop from the ordinary strawberries. Mastodon is a good grower and a big producer of big, bright, red berries. The ideal berry for home use.

NOTE—All the varieties of strawberries which we offer are self-fruitful and do not require other varieties to pollinate them.

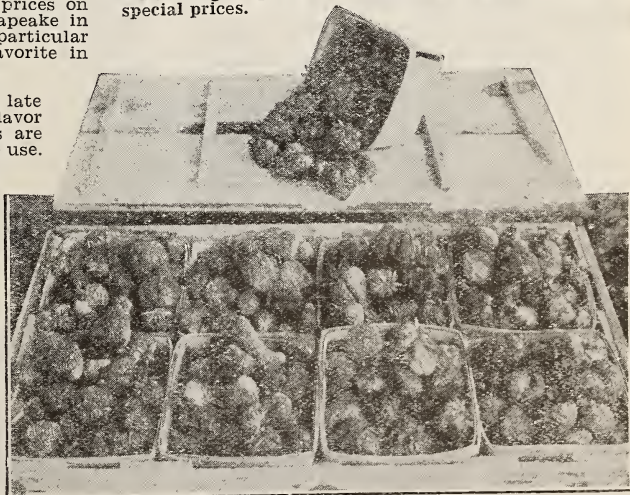


Chesapeake—Greatest money maker for a late variety

PRICES OF HARRISON'S' STRAWBERRY PLANTS

	25 plants	100 plants	250 plants	500 plants	1000 plants	5000 plants
EARLY						
Blakemore	\$.025	\$.070	\$.140	\$2.30	\$3.75	\$15.00
DORSETT	.50	1.50	2.75	5.00	10.00	
FAIRFAX	.50	1.50	2.75	5.00	10.00	
Klondyke	.25	.70	1.40	2.30	3.75	15.00
Missionary	.25	.65	1.35	2.25	3.50	14.50
PREMIER	.39	.75	1.50	2.40	4.00	17.50
Senator Dunlap.	.30	.75	1.50	2.40	4.00	17.50
MIDSEASON						
BIG JOE	.30	.80	1.55	2.50	4.25	19.00
LATE						
Aroma	.30	.80	1.55	2.50	4.25	19.00
CHESAPEAKE	.35	.90	1.60	2.60	4.75	21.00
Gandy	.30	.80	1.55	2.50	4.25	19.00
Lupton	.30	.80	1.55	2.50	4.25	19.00
Wm. Belt.	.35	.90	1.60	2.60	4.75	21.00
EVERBEARING						
MASTODON	.35	1.00	2.00	3.75	6.50	30.00

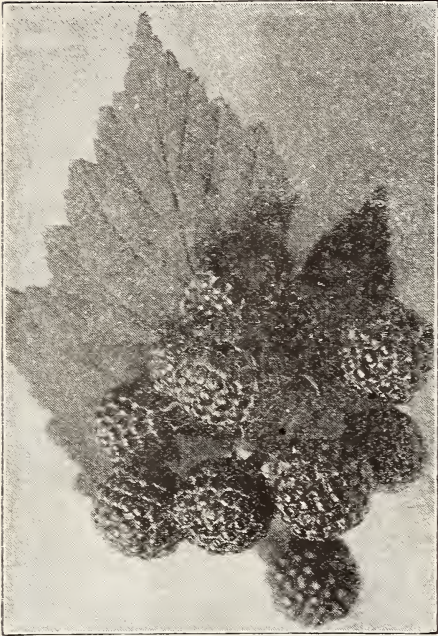
For larger quantity than 5,000 plants, write for special prices.



Premier Strawberries packed in 32-quart crate

HARRISONS' RASPBERRIES

Quick Profits — Enjoyable Work



Cumberland Raspberries—leading black variety

If you are looking for quick profits and enjoyable work for your spare time, by all means put out a patch of Red and Black Raspberries. The growing cost is slight and they will succeed on most any soil. As far as their eating qualities are concerned, they stand supreme, sweet palatable fruit of the very finest flavors. Served fresh they make the finest kind of dessert, while their canning and preserving qualities are unexcelled.

List of Selected Heavy Yielding Varieties

BLACK RASPBERRIES

CUMBERLAND. Midseason to late. This is the most popular Blackcap at the present time, because of its great size, firmness, and productiveness. The fruit is the largest of the Raspberry family, and is of such handsome appearance that it is sure to bring the top prices on the market.

Cumberland has never been known to fail to produce a big crop every year. This variety is perfectly hardy and tremendously productive, the bushes are vigorous, upright and healthy. Berries are a glossy black in color, not equalled by any other variety in quality, flavor and appearance. It's good to eat and good to sell.

Plum Farmer. This variety is very popular with many growers on account of its earliness of ripening. Plum Farmer has the ability to mature its customary big yield in a very short time, generally 15 to 20 days.

PRICES OF ALL VARIETIES OF RED AND BLACK RASPBERRIES, EXCEPT CHIEF

Selected No. 1 Plants				
25 for	100 for	250 for	500 for	1000 for
\$1.00	\$2.50	\$5.25	\$9.50	\$17.50

PRICES OF CHIEF RASPBERRIES

25 for	100 for	250 for	500 for	1000 for
\$1.25	\$3.00	\$6.00	\$11.00	\$20.00

The plants are healthy, canes strong growing. Berries are produced in clusters and are large, well colored and of first quality. The fruit ripens a week earlier than Cumberland.

RED RASPBERRIES

CHIEF. A new red raspberry that is destined to challenge the supremacy of Latham. This berry was originated by the Minnesota State Breeding Farm and has been given rigid tests over a wide area. It has proven hardy, resistant to disease, a heavy cropper of large excellent quality berries that will withstand shipments to market. Its main point in its favor is that it is ten days earlier than Latham, thereby getting in the market before other varieties are ripe. We have a limited supply of this variety and would advise every grower to try it out.

Cuthbert. An old and reliable variety that has proven the main money-maker for Raspberry growers in many sections of the country for years. The fruit is large, well colored, of superb flavor and quality. We can recommend Cuthbert as an all-around berry either for home use, canning, local market or shipping. The canes are perfectly hardy, foliage healthy. Bushes are large and very productive. Cuthbert sets the standard by which other Red Raspberries may be judged.

LATHAM. Although this is a comparatively new variety it is entirely past the experimental stage, and we unhesitatingly give Latham to Harrissons' customers as one of the very best Raspberries ever grown. This variety originated at the Minnesota State Fruit Breeding Farm and is being grown extensively in raspberry producing regions. The sensational yields of this variety have attracted the attention of growers everywhere, and everyone who has given it a trial are praising the many unusual features they have found in Latham. After thoroughly testing Latham we find it a remarkable variety in every respect and you will be both delighted and surprised after giving it a trial.

Latham is a tall, vigorous grower, the canes are extra heavy, well able to support the tremendous load of fruit. The foliage is a healthy dark green, tough and leathery, highly resistant to insects. Latham ripens with Cuthbert and is immensely productive. Covers a longer fruiting season than any other Raspberry. The berries are beauties and will cause a sensation wherever they are shown. Many of them are over an inch in diameter and they hold this large size to the end of the season. Color a dark rich red, quality of the best with full raspberry flavor.

St. Regis. This variety is by far the best fall bearing type. There is a big demand for this fine fruit in the late summer and fall, and many growers make exceptionally large profits when grown for markets. However, if you do not grow them for market by all means plant a few bushes for home use and enjoy this delicious fruit all summer and fall. St. Regis produces a big crop of fruit during the regular season and then continues bearing all summer and fall on the new canes.



Latham Raspberries—New variety without a peer

HARRISONS' BLACKBERRIES

How would you like to make some extra money after your strawberries and raspberries are all gone, plant some blackberries and they will meet with ready sale; people must have some berries to eat all summer and blackberries are highly desirable. They make a very satisfactory crop on poor lands and are really a paying proposition. They are practically immune from disease and insects, one planting will provide a lot of fruit for a number of years.

Early Harvest. Black, very early, excellent quality, good size, ripens 10 days to two weeks before any other. Favorite commercial berry in Middle Atlantic States. Sells at fancy prices.

ELDORADO. The heavy producing quality of Eldorado has placed it first among blackberries. Every good quality possessed by other blackberries is emphasized in Eldorado. Its berries are of enormous size, shiny jet black, sweet pleasing flavor. It is valuable for all purposes, both home and commercial, being so firm that it will remain in good condition for three and four days, and can be sent to distant markets where it always commands the highest price. This variety is making big money for other growers and it will do the same for you.

Mersereau. Brilliant black, late, very large berries, extra good quality. Heavy producer, extra strong grower.

PRICES OF No. 1 PLANTS

25 for	100 for	250 for	500 for	1000 for
\$1.00	\$3.00	\$6.25	\$11.50	\$21.00

DEWBERRIES

LUCRETIA. Long, mammoth blackberries, recognized by horticulturists everywhere as the leading variety. Each plump berry is a morsel of delight. Incomparably better in every way than any blackberry you ever have seen or tasted. Lucretia is a very early bearer, ripening from a week to ten days before even the earliest blackberries. This, together with the fact that they are unquestionably the finest looking berry of their kind and of such big uniform size makes them top-notchers on price in any market. For real profits be sure to plant Lucretia. For home and commercial growing Lucretia is the only variety of importance.

PRICES OF No. 1 SELECTED LUCRETIA DEWBERRY PLANTS

25 for	100 for	250 for	500 for	1000 for
\$0.75	\$2.00	\$4.25	\$7.00	\$12.00

Lucretia Dewberries
—only dewberry
worthy of commer-
cial production



CURRENTS

Currants are a big money maker and are very easy to grow. They are always in demand for making jellies, jams, preserves, etc. Every home garden should contain a dozen or more. Set plants 4 feet apart each way in rich ground, cultivate well or mulch heavily, prune old wood so that each remaining shoot will have room. We grow only the two most popular varieties.

Fay. Red, midseason, large berries, good flavor. Excellent for jams, jellies and preserves.

Wilder. Bunch and berries very large, bright attractive red color, even when dead ripe. Compared with Fay, is equal in size with longer bunch, better in quality, with much less acidity, continues on bush much longer, ripens slightly later. Best commercial or home variety grown.

PRICES OF 2 YEAR No. 1 PLANTS

1 to 9 plants.....	\$0.20 each
10 to 49 plants.....	.15 each
50 to 300 plants.....	.10 each

GOOSEBERRIES

Very profitable, for they are entirely hardy, easy to plant and care for and bring good returns. One or two rows in your garden will supply your family and allow you to sell some. Plant gooseberries 3 to 4 feet apart in good rich soil, and give a liberal dressing of manure every season.

Downing. Large, handsome, pale green of splendid quality for both cooking and table use, bush very vigorous.

HOUGHTON. Round, medium size, pale red, sweet, tender, very good; plants spreading, shoots slender, enormously productive

PRICES OF 2 YEAR No. 1 PLANTS

1 to 9 plants	\$0.20 each
10 to 49 .. plants	.15 each
50 to 300 plants	.10 each



EVERGREENS, SHRUBS, TREES, ROSES, ETC.

For the Garden Beautiful



Make your home grounds more attractive

Every home that is built needs a finishing touch in the way of flowers, shrubs or trees. These give the final touch to the outside appearance of the grounds surrounding the home.

Nursery Stock a Good Investment

Is there any other thing about your home that grows in value, interest and beauty each succeeding year like trees and plants? Most other things are wearing out with use and age and constantly depreciating in value. That is why we say our nursery stock is a permanent and accumulative investment. What is that shade tree that cost you two or three dollars a few years ago now worth to your place? If you are contemplating a planting, not for years have you had such an unusual opportunity to secure plants of Harrison's' quality at such low prices.

You Will Enjoy Creating An Outdoor Living Room

The vogue for beauty, outside the home, as well as within, is upon us—and this new vogue finds its most charming expression in the modern outdoor living room.

This new fashion results from more than the public's consciousness of "back-yard" barrenness. It is the home owner's own solution to the problem of how to get the most value out of his property and the most enjoyment out of living. The charm of evergreens, flowering plants and trees, tastefully arranged to create a veritable living room outdoors is irresistible; and the prospect of planting a place outdoors which is attractive, livable and comfortable—where the whole family can find countless hours of enjoyable pleasure.

Harrison's' Superior Ornamentals

Nowhere in the country are the lands more fertile or productive than on the Eastern Shore of Maryland, where ideal climatic conditions and location near the Atlantic Ocean insure hardiness, strong root development, so necessary for transplanting to new locations.

The varieties pictured and described in this book are the best and most satisfactory of all ornamentals. They were selected after many years of experience and tests by our experts from among hundreds of similar varieties. We are offering our customers only varieties of proven merit and hardiness. Our trees

and plants are all inspected and pronounced free from insects and diseases.

Plant This Year

With one of the finest growing seasons and prices lower than in years, landscape architects and garden lovers are taking advantage of the "America Beautiful" spirit by purchasing their planting material now.

Buy From Harrison's

As in all buying, it pays to know what you are getting in buying nursery stock—you can't afford to take chances. When you buy from Harrison's' Nurseries you know that a strong, established organization with fifty successful years of experience is behind every transaction. Harrison's stand back of the quality of every plant they send out.



A well planted home

HARRISONS' EVERGREENS

For Year Around Beauty

Truly the aristocrats of freedom, lending year around beauty to your home surroundings. We have an unusual assortment this season of evergreens in green, golden and silver, which make the most attractive combination for planting as a foundation planting in groups or as specimen trees.

Evergreens Reasonably Priced

You pay no more for Harrisons' super-grade Evergreens, all of which are selected individually as to shape and foliage, than you do for second grade stock, that is dug up in the nursery row, regardless of the development.

All our Evergreens are balled and burlapped in the fertile soil in which they are grown, thereby assuring healthy and vigorous growth for all time.

Freight is the most satisfactory way to ship Evergreens.



A block of specimen American Arborvitae

ARBORVITAE

AMERICAN ARBORVITAE (*Thuja occidentalis*).

Probably no evergreen is more admired than the American Arborvitae with its beautifully carved foliage of deep green, its graceful, refined habits and its artistic shape. These features make it indispensable in the home foundation groups and in the lawn and garden plantings. This evergreen is easy to transplant and grows under adverse weather conditions.

15 to 18 in., 40c each; 1½ to 2 ft., 60c each; 2 to 3 ft., 80c each; 3 to 4 ft., \$1.15 each; 4 to 5 ft., \$2.00 each; 5 to 6 ft., \$3.00 each; 6 to 8 ft., \$5.00 each.

BERCKMAN'S GOLDEN ARBORVITAE (*Biota aurea nana*).

This evergreen is the best golden form grown. The clear, golden yellow color is very rich and striking and makes a delightful contrast when planted with other evergreens. It is a dwarf growing form and is very ornamental when planted in a foundation group. 12 to 15 in., 50c each; 15 to 18 in., 75c each; 18 to 21 in., \$1.00 each; 21 to 24 in., \$1.25 each.

CHINESE ARBORVITAE (*Biota orientalis*).

An attractive, upright evergreen, rapid grower with bright green foliage. When young it is compact and rather

pyramidal in form, as it becomes older assumes the habit of a rather loose growing Red Cedar. Very useful to use for screening purposes because of its rapid growth. 1½ to 2 ft., 50c each; 2 to 3 ft., 75c each; 3 to 4 ft., \$1.15 each; 4 to 5 ft., \$1.75 each; 5 to 6 ft., \$2.75 each; 6 to 8 ft., \$4.00 each.

COMPACT PARSONS ARBORVITAE (*Thuja occidentalis compacta*).

Natural compact, globe-shaped, dark green foliage. The ideal low-growing plant for massing against the taller evergreens in foundation plantings. 12 to 15 in., 40c each; 15 to 18 in., 55c each; 18 to 21 in., 75c each; 21 to 24 in., \$1.10 each; 2 to 2½ ft., \$1.50 each.

ELLWANGER'S OR TOM THUMB ARBORVITAE (*Thuja occidentalis ellwangeriana*).

A low, broad pyramidal form of evergreen with slender branches and feathery foliage. 12 to 15 in., 40c each; 15 to 18 in., 55c each; 18 to 21 in., 75c each; 2 to 2½ ft., \$1.50 each.

GEORGE PEABODY ARBORVITAE (*Thuja occidentalis lutea*).

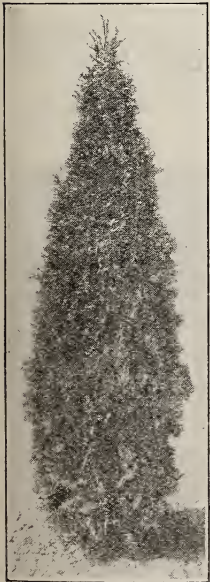
A beautiful variety, the gold marking diffusing more deeply into the foliage than in any other tall growing evergreens. Fine as a specimen or to produce color contrast with other evergreens. 1 to 1½ ft., 50c each; 1½ to 2 ft., 70c each; 2 to 3 ft., \$1.00 each; 3 to 4 ft., \$1.50 each.

PYRAMIDAL ARBORVITAE (*Thuja occidentalis pyramidalis*).

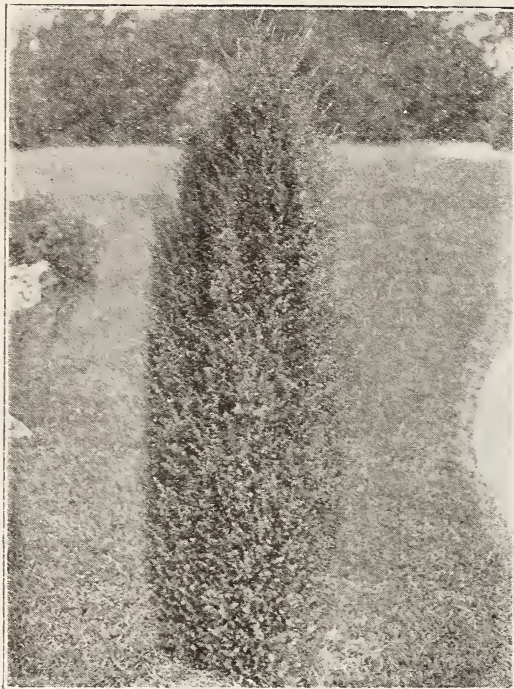
A really beautiful evergreen that should be included in every planting. It grows tall and narrow, requires no trimming and retains its bright green color throughout the whole year. A pair of them placed at the entrance or at the corner of a home makes a superb showing. Our Pyramidal Arborvitae are grown with extreme care and each one is a specimen. 15 to 18 in., 40c each; 1½ to 2 ft., 60c each; 2 to 3 ft., 80c each; 3 to 4 ft., \$1.25 each; 4 to 5 ft., \$2.00 each.

SIBERIAN ARBORVITAE (*Thuja occidentalis sibirica*).

Dark green color, broadly pyramidal, very hardy and holds green color during the winter. 2 to 2½ ft., \$1.50 each.



Pyramidal Arborvitae



Irish Juniper

CEDARS

INDIAN CEDAR (*Cedrus deodara*). Feathery blue-green foliage, graceful drooping branches, tall growing. Ideal to use as a specimen in the corners of lawns. 1½ to 2 ft., \$1.00 each; 2 to 3 ft., \$1.50 each; 3 to 4 ft., \$2.25 each; 4 to 5 ft., \$3.25 each.

HEMLOCK

CANADIAN HEMLOCK (*Tsuga canadensis*). An elegant pyramidal tree with drooping branches and delicate dark green foliage. Excellent for lawn purposes, also suited for hedges. 3 to 4 ft., \$3.00 each; 4 to 5 ft., \$4.00 each; 5 to 6 ft., \$5.50 each.

JUNIPERS

ANDORRA JUNIPER (*Juniperus communis depressa plumosa*). A low-spreading Juniper of an unusually good color. During spring and summer it is a bright green, turning to a rich purple-bronze color in fall and winter. Unusually good for planting along slopes and places where grass will not grow. 15 to 18 in. spread, 75c each; 1½ to 2 ft. spread, \$1.00 each; 2 to 2½ ft. spread, \$1.50 each.

GOLDEN SPREADING JUNIPER (*Juniperus communis aurea*). Low-spreading habit, bright golden foliage in the spring and summer. Useful for adding color in a foundation planting. 15 to 18 in. spread, 75c each; 1½ to 2 ft. spread, \$1.00 each; 2 to 2½ ft. spread, \$1.50 each.

IRISH JUNIPER (*Juniperus communis hibernica*). Forms a narrow and dense column, compact, bluish green foliage. Most attractive when planted around the foundation of a home, at corners and entrances. Widely

used in formal gardens. 1 to 1½ ft., 35c each; 1½ to 2 ft., 55c each; 2 to 3 ft., 75c each; 3 to 4 ft., \$1.15 each; 4 to 5 ft., \$1.75 each; 5 to 6 ft., \$2.75 each.

PFITZER'S JUNIPER (*Juniperus chinensis pfitzeriana*). The most popular of all spreading evergreens. Its peculiarly graceful, distinctive manner, plus an unusually hardy nature, makes it particularly fascinating and desirable for foundation planting. 15 to 18 in. spread, 75c each; 1½ to 2 ft. spread, \$1.00 each; 2 to 2½ ft. spread, \$1.50 each.

SAVIN JUNIPER (*Juniperus sabina*). Handsome, dark green foliage, spreading branches forming irregular vase-shaped bush. One of the most attractive spreading evergreens grown. The ideal plant to use for low foundation plantings. Can be kept trimmed to any desired height. 15 to 18 in. spread, 75c each; 1½ to 2 ft. spread, \$1.00 each; 2 to 2½ ft. spread, \$1.50 each.

SPINY GREEK JUNIPER (*Juniperus excelsa stricta*). A tall grower of upright columnar habit and bluish green foliage. The growth is so slow that the tree is well adapted for foundation plantings and other situations requiring dwarf trees. 9 to 12 in., 75c each; 12 to 15 in., 50c each; 15 to 18 in., 75c each; 18 to 21 in., \$1.00 each; 21 to 24 in., \$1.10 each; 2 to 2½ ft., \$1.50 each.

SWEDISH JUNIPER (*Juniperus communis suecica*). Tall, columnar habit, dense fairly broad foliage, drooping tips. Resembles the Irish Juniper, but is somewhat slower growing and lighter in color. 15 to 18 in., 40c each; 1½ to 2 ft., 60c each; 2 to 3 ft., 80c each; 3 to 4 ft., \$1.25 each.

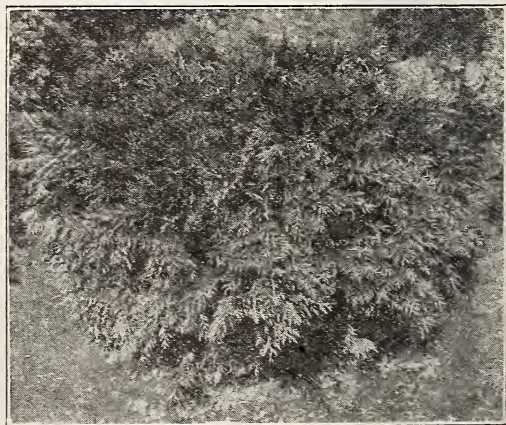
VIRGINIA BLUE JUNIPER. Broadly conical form and beautiful glaucous blue foliage make it one of the choicest evergreens. 2 to 3 ft., \$1.50 each; 3 to 4 ft., \$2.25 each.

21 E. Bond St.,
Corry, Pa.
Dec. 1, 1932

Gentlemen:

My order of two Irish Junipers received Nov. 28th in good condition. Thanks.

Respectfully,
LEO T. FRANZ



Compact Globular Arborvitae

PINES

MUGHO DWARF PINE (*Pinus montana mughus*). A picturesque dwarf pine that forms a bushy, compact ball growing as broad as it does tall, seldom reaching a height of four feet. Foliage is dark, rich green; needles long and stiff. 12 to 18 in. spread, 75c each; 18 to 24 in. spread, \$1.00 each.

SCOTCH PINE (*Pinus sylvestris*). Of rapid growth with strong branches and short stiff bluish green foliage. Develops into a tall, round-headed tree. 1 to 1½ ft., 40c each; 1½ to 2 ft., 60c each; 2 to 3 ft., 80c each.

RETINOSPORA— CHAMAECYPARIS

JAPANESE PLUME-LIKE RETINOSPORA (*Retinospora plumosa*). A handsome evergreen from Japan, with feathery, light green foliage, more beautiful than a fern. Excellent for foundation plantings; can be kept pruned to any desired height. 15 to 18 in., 50c each; 1½ to 2 ft., 75c each; 2 to 3 feet., \$1.00 each; 3 to 4 ft., \$1.50 each; 4 to 5 ft., \$2.50 each.

JAPANESE GOLDEN PLUME-LIKE RETINOSPORA (*Retinospora plumosa aurea*). Golden yellow color throughout the summer; compact habit of growth, similar to the Japanese Plume-like Retinospora except in color. Makes an ideal background plant in foundation planting. 15 to 18 in., 50c each; 1½ to 2 ft., 75c each; 2 to 3 ft., \$1.00 each; 3 to 4 ft., \$1.50 each; 4 to 5 ft., \$2.50 each.

JAPANESE SAWARA RETINOSPORA (*Retinospora pisifera*). Light green, lacy-like foliage, bluish beneath. Quick grower, loosely pyramidal. 1½ to 2 ft., 75c each; 2 to 3 ft., \$1.00 each; 3 to 4 ft., \$1.50 each.

JAPANESE GOLDEN SAWARA RETINOSPORA (*Retinospora pisifera aurea*). Habit of growth like the Sawara Retinospora but its color is bright golden. 15 to 18 in., 50c each; 1½ to 2 ft., 75c each; 2 to 3 ft., \$1.00 each; 3 to 4 ft., \$1.50 each.

JAPANESE HINOKI RETINOSPORA (*Retinospora obtusa*). Compact; pyramidal form, slightly drooping tips, beautiful dark green, flat foliage. 15 to 18 in., 50c each; 1½ to 2 ft., 75c each; 2 to 3 ft., \$1.00 each; 3 to 4 ft., \$1.50 each; 4 to 5 ft., \$2.50 each.

JAPANESE SULPHUR-TINTED RETINOSPORA (*Retinospora plumosa sulphurea*). Light yellow tips with feathery, silver-blue background. Dwarf grower, suitable for planting in front of taller evergreens. 1 to 1½ ft. spread, \$1.00 each.

JAPANESE THREAD-LIKE RETINOSPORA (*Retinospora filifera*). Has long, stringy, droopy branches, bright green foliage; slow grower, very



Plume-like Retinospora

attractive. 1 to 1½ ft., 50c each; 1½ to 2 ft., 75c each.

VEITCH'S JAPANESE RETINOSPORA (*Retinospora squarrosa veitchi*). Foliage silvery blue, feathery and dense, giving a soft woolly appearance. Broad pyramidal outline, can be kept to any height by trimming. One of the best Retinosporas. 15 to 18 in., 50c each; 1½ to 2 ft., 75c each.

SPRUCES

COLORADO BLUE SPRUCE (*Picea pungens glauca*). Foliage blue and sage-green, that distinct color which is so rare in the East. As a specimen tree on the lawn or planted in groups in front of darker colored evergreens, the Blue Spruce is at its best. No planting of evergreens can be effective without this splendid variety. 15 to 18 in., \$2.00 each.

KOSTER'S BLUE SPRUCE (*Picea pungens glauca kosteri*). Foliage intense silvery blue and very dense on the branch ends. The trees in our nursery are grafted from the very finest specimens and have rich pronounced blue color that makes this tree so strikingly handsome. 12 to 15 in., \$3.00 each; 15 to 18 in., \$4.25 each; 18 to 24 in., \$6.00 each.

NORWAY SPRUCE (*Picea excelsa*). A lofty, noble tree of open, pyramidal habit. Very popular and effective in evergreen groups and one of the best evergreens for hedges. Its color is normally a good, rich, dark green but when the new spring growth lights up the branches, the tips are silver-blue. Norway Spruce is the variety most commonly used for Christmas trees. 15 to 18 in., 40c each; 1½ to 2 ft., 60c each; 2 to 3 ft., 80c each; 3 to 4 ft., \$1.25 each; 4 to 5 ft., \$2.00 each; 5 to 6 ft., \$3.00 each.



A field of Norway Spruce

YEW S

IRISH YEW (*Taxus baccata hibernica*). This evergreen is the aristocratic member of the Yew family. It grows tall and narrow with stout, crowded branches and spirally arranged leaves which are dark green in color. This Yew is very scarce, but everyone who sees it is enthusiastic about it. Formerly it was imported from Europe, but after all importations were discontinued by the Federal Government, American nurserymen were unable to supply their customers. Fortunately, we had some specimen plants in our nurseries from which we were able to propagate. 12 to 15 in. field grown, \$1.00 each.

JAPANESE SPREADING YEW (*Taxus cuspidata*). The beautiful Yew of moderate bushy growth, the upright spreading branches densely clothed with short leaves of dull green. Hardest of all Yews, grows in semi-shady locations. 12 to 15 in. spread, 75c each; 15 to 18 in. spread, \$1.25 each; 1½ to 2 ft. spread, \$2.00 each.

SPREADING ENGLISH YEW (*Taxus baccata repandens*). Low spreading, dwarf grower, with dark, glossy green foliage. 12 to 15 in. spread, 75c each; 15 to 18 in. spread, \$1.25 each; 1½ to 2 ft. spread, \$2.00 each.

UPRIGHT ENGLISH YEW (*Taxus baccata capitata*). Upright grower, dense, green foliage, makes a most attractive specimen plant when fully matured. 12 to 15 in., 75c each; 15 to 18 in., \$1.25 each; 1½ to 2 ft., \$2.00 each.



Upright English Yew

BROAD LEAVED EVERGREENS

HARRISON-GROWN BOXWOOD

Possibly no other evergreen shrub has been so much used for marking the boundaries of formal gardens, to outline flower beds, for low hedges, and for other ornamental purposes. The plants will adapt themselves to almost any situation and climate, and by judicious pruning can be trained to many forms. We believe that our stock of boxwood this year is considerably above the average, being possibly the highest quality available throughout the Union. The plants have been properly cultivated and transplanted, and are therefore in just the condition to grow rapidly when transplanted to your grounds. We are one of America's largest growers of boxwood. Box-

wood will be properly dug, bailed and burlapped, except customer advising otherwise.

BOXWOOD (*Buxus sempervirens*). Handsome shrubs of dense, compact growth. Leaves evergreen, quite small, deep glossy green. An ideal plant, more extensively used for shaping in various forms than possibly any other evergreen.

	1 to 9 plants	10 to 49 plants	50 to 300 plants
8 to 10 in.....	\$0.40	\$0.35	\$0.30 each
10 to 12 in.....	.50	.45	.40 each
12 to 15 in.....	.60	.55	.50 each
15 to 18 in.....	.75	.70	.65 each
18 to 21 in.....	1.00	.90	.85 each
21 to 24 in.....	1.30	1.20	1.15 each
24 to 30 in.....	1.75	1.50	1.40 each

DWARF ENGLISH BOXWOOD (*Buxus sempervirens suffruticosa*). A widely known and popular dwarf form, evergreen foliage, small, deep green and dense. Suitable for very low hedges and edgings. This year we have an extra fine supply of small plants to offer, and at very attractive prices. Now is the time to get your boxwood garden started.

	1 to 9 plants	10 to 49 plants	50 to 300 plants
6 to 8 in. B & B	\$0.45	\$0.40	\$0.35 ea.

SPECIAL OFFER

Dwarf English Boxwood

Bushy plants, 3 to 5 inches, 15c each; 10 for \$1.25; 25 for \$2.65; 50 for \$5.00; 100 for \$9.00.

These plants are shipped wrapped in damp moss. If desired by Parcel Post add 10% to your remittance.



Boxwood

HARDY AZALEAS

Azalea amoena. A dense, dwarf-growing shrub with slender branches and semi-double flowers of a bright, rosy purple color. Blooms in early spring and retains its foliage all year. 6 to 8 in. spread, 35c each; 8 to 10 in. spread, 45c each; 10 to 12 in. spread, 60c each; 12 to 15 in. spread, 80c each.

AZALEA HINODEGIRI. Broad, spreading habit, very bright carmine-pink flowers in spring. Beautiful evergreen foliage, one of the most striking colored flowers of any plant grown. The plant is literally covered up with blooms during the spring time. Ideal plant for adding color in front of evergreen planting. 4 to 6 in. spread, 25c each; 6 to 8 in. spread, 40c each; 8 to 10 in. spread, 60c each; 10 to 12 in. spread, 80c each; 12 to 15 in. spread, \$1.00 each.

Azalea Macrantha. Large single salmon red flowers. Blooms very late in the season. A very compact, flat, quick grower with dark green, glossy leaves. 6 to 8 inch spread, 40c each; 8 to 10 inch spread, 60c each; 10 to 12 inch spread, 80c each.

EUONYMUS

Green Euonymus (*Euonymus japonica*). Green, glossy, evergreen foliage, upright grower. Thrives under adverse soil conditions. Ideal for planting at seashores. 2 to 3 ft., 80c each; 3 to 4 ft., \$1.25 each.

Goldspot Euonymus (*Euonymus japonica aureo-variegatus*). Resembles the green Euonymus, except its leaves are variegated with golden color; also it is a slightly more columnar grower. 1 to 1½ ft., 40c each; 1½ to 2 ft., 60c each; 2 to 3 ft., 80c each; 3 to 4 ft., \$1.25 each.

LAURELS

English Cherry Laurel (*Laurocerasus officinalis*). A valuable shrub of great vigor, beautiful broad, shining, rich evergreen foliage. Not hardy in the North. 1½ to 2 ft., 60c each; 2 to 3 ft., 80c each; 3 to 4 ft., \$1.25 each.

Mountain Laurel (*Kalmia latifolia*). Most effective in June, when the clusters of pink flowers open. Good foliage, likes shady locations. 2 to 3 ft., \$1.00 each.



Azalea hinodegiri

OTHER LEADING VARIETIES

Bush Arbutus (*Abelia grandiflora*). One of our most beautiful, popular and satisfactory Broad-Leaved Evergreens. The graceful, drooping stems and branches are covered with dark, glossy leaves, which in winter assume a metallic sheen. From the middle of June until frost, this plant produces an immense quantity of tubular-shaped white flowers tinged with pink, about an inch long, which are borne in clusters. For single specimen, for groups or for a hedge, we cannot too strongly recommend this plant. Grows satisfactorily under shady locations. 1 to 1½ ft., 40c each; 1½ to 2 ft., 55c each.

Little Leaf Japanese Holly (*Ilex crenata microphylla*). A much-branched evergreen shrub, with oval, crenate leaves. Makes a splendid specimen. 1 to 1½ ft., \$1.00 each.

Ligustrum Lucidum. Large, thick, shiny dark green leaves; white flowers, black berries in winter. Will thrive in shady locations. 1 to 1½ ft., \$1.00 each; 1½ to 2 ft., \$1.50 each; 2 to 3 ft., \$2.00 each.

Nandina (*Nandina domestica*). A beautiful upright growing shrub, with numerous reed-like stems springing from the same root. Leaves deep, glossy green, when young tinged with red. In winter beautiful coppery tones are assumed; white flowers produced in long panicles, followed by masses of small red berries. 12 to 18 in., 75c each.

Southern Magnolia (*Magnolia grandiflora*). Greatest of all Southern ornamental trees. Large, glossy leaves, handsome white flowers. 2 to 3 ft., \$1.25 each; 3 to 4 ft., \$1.75 each; 4 to 5 ft., \$2.50 each; 5 to 6 ft., \$3.50 each.

Yucca or Adam's Needle. Broad, sword-like evergreen foliage; tall creamy white flowers during July. Field-grown, extra heavy clumps, \$1.00 each.



Bush Arbutus (*Abelia grandiflora*)

TREES FOR SHADE AND BEAUTY



Norway Maple—the most popular shade tree

To appreciate the value of trees, one has only to compare the comfort and beauty of suburban avenues on hot summer days, with the barrenness and glare of downtown city streets. For the street or as a specimen planted in the home grounds they perform a real service to man in the beauty they furnish, and protect him from the rays of the summer sun.

Shade Trees Our Specialty

We have undoubtedly more Shade Trees in salable sizes, growing in our nursery now, than any other nursery in the country. All our specimen trees are carefully selected before digging, and can

be shipped either by freight or express to any destination.

The shade trees we supply are grown here at Berlin, the same as our fruit trees, and will live and grow anywhere, North or South, under any fair chances. They received the best of care in cultivation and pruning; they are fine specimens; their roots are extra good; they are graded liberally, which means that you get good, big trees for your money. You can beautify your home grounds with Harrisons' Shade Trees without great expense, and the sooner you begin the sooner you will enjoy the pleasure of owning a beautiful home.

For quantities greater than 50 trees write for special prices.

(Note: Shade trees cannot be shipped by Parcel Post.)

MAPLES

NORWAY MAPLE (*Acer platanoides*). Typical Maple leaves, large and bright green, fading to gold in the fall. Trunk and branches are sturdy and strong, lending an effect of ruggedness. Growth is fast. Branches and foliage are thick and compact, and the head, which is round-topped, begins to branch not far above the ground. The tree is large—towering 50 feet high when fully grown. Splendid trees, most beautiful and desirable. For lining the sides of lanes and roads, for a lawn, to protect the house from sun and weather, for shade, for beauty and satisfaction, and for real permanent worth in all landscape planting there are no other trees in its class. Norway Maples are at home in the mountains, but will thrive at any elevation, and in nearly any soil to be found in this country.



American Elm

	1 to 9 trees	10 to 50 trees
5 to 6 ft.....	\$1.00	\$0.90 each
6 to 8 ft.....	1.50	1.25 each
8 to 10 ft.....	2.00	1.75 each
10 to 12 ft.....	2.75	2.50 each
12 to 14 ft.....	3.50	3.25 each

SILVER MAPLE (*Acer dasycarpum*). The name comes from the color of leaves. Underneath, these are the same shade as new, bright silver; on top they are light green. Many of them are carried on their edges, and when wind blows the trees are alive with silver and green flashes. In the fall the leaves fade to pale yellow. Growth is faster than that of any other Maple, and probably faster than that of any other shade tree. Branches are slim and dainty rather than heavy, and the form of growth is spreading. Gets very large eventually—as high as 120 feet sometimes—and does well over nearly all the United States. Makes splendid quick screens or quick shade. On streets and in parks is extensively planted, and is very fine.

6 to 8 ft.....	1 to 9 trees	10 to 50 trees
8 to 10 ft.....	\$0.70	\$0.60 each
10 to 12 ft.....	.90	.80 each
12 to 14 ft.....	1.35	1.25 each
	2.00	1.75 each

SCHWEDLER'S RED-LEAVED MAPLE (*Acer platanoides schwedleri*). Very similar to the Norway Maple, except in spring the leaves are purple and crimson, in summer months dark green, and when fall comes the leaves change to a brown-reddish color. 6 to 8 ft., \$2.50 each.

JAPANESE BLOODLEAF MAPLE (*Acer palmatum atropurpureum*). A very picturesque maple for use in landscape schemes, as an individual specimen or to add color to your planting. Very conspicuous, medium size bush or tree with blood red foliage. A wonderful addition to any lawn. Best color in sunny locations. 15 to 18 in., \$1.50 each; 18 to 24 in., \$2.00 each.

ELMS

AMERICAN ELM (*Ulmus americana*). A noble native tree of great size, wide spreading, gracefully curving branches, growing up in a form like the outline of long-stemmed flowers in a



Oriental Plane

PLANES

ORIENTAL PLANE (*Platanus orientalis*). A rapid, upright, clean growing tree, long lived, beautiful dense foliage. It is very hardy and not affected by insects.

6 to 8 ft.....	1 to 9 trees	10 to 50 trees
8 to 10 ft.....	\$0.90	\$0.80 each
10 to 12 ft.....	1.25	1.15 each
12 to 14 ft.....	1.75	1.50 each
	2.50	2.25 each

AMERICAN PLANE OR SYCAMORE (*Platanus occidentalis*). A very rapid growing tree for yard and street planting. The bark is grayish green and peels off during the winter. Not as desirable as the Oriental Plane, but is a much more rapid grower.

6 to 8 ft.....	1 to 9 trees	10 to 50 trees
8 to 10 ft.....	\$0.90	\$0.80 each
10 to 12 ft.....	1.25	1.15 each
12 to 14 ft.....	1.75	1.50 each
	2.50	2.25 each



Pin Oak

tall vase. The handsomest American tree for lawns, avenues and parks.

6 to 8 ft.....	1 to 9 trees	10 to 50 trees
8 to 10 ft.....	\$1.00	\$0.90 each
10 to 12 ft.....	1.50	1.35 each
12 to 14 ft.....	2.00	1.75 each
	2.50	2.25 each

MOLINE ELM. Grows into a dense conical specimen. 6 to 8 ft., \$2.00 each.

CHINESE ELM (*Ulmus pumila*). This tree is of recent introduction in this country. It is a very rapid grower, typical elm-like foliage, adaptable to most every kind of soil and condition. It develops into a splendid shade tree, its vigorous growth making it very desirable where quick shade is desired. Order early as our stock on this variety is somewhat limited.

6 to 8 ft.....	1 to 9 trees	10 to 50 trees
8 to 10 ft.....	\$1.50	\$1.25 each
	2.00	1.75 each

OAKS

PIN OAK (*Quercus palustris*). The daintiest and most graceful of the oaks, with deeply cut, bright, fresh green foliage; beautiful autumn effect. A very graceful tree for the lawn and fine for streets or roadsides.

6 to 8 ft.....	1 to 9 trees	10 to 50 trees
8 to 10 ft.....	\$1.75	\$1.50 each
10 to 12 ft.....	2.50	2.25 each
	3.50	3.25 each



Silver Maple



Babylon Weeping Willow

WILLOWS

BABYLON WEEPING WILLOW (*Salix babylonica*). A rapid-growing, hardy tree, thriving in any moist soil. The willows are valuable and interesting subjects on account of their graceful aspect.

	1 to 9 trees	10 to 50 trees
6 to 8 ft.....	\$1.00	\$0.90 each

GOLDEN BARK WEEPING WILLOWS. Similar in habit and growth to the Babylon Weeping Willow, except the bark is of golden color, making a showy effect in the winter time.

	1 to 9 trees	10 to 50 trees
6 to 8 ft.....	\$1.00	\$0.90 each
8 to 10 ft.....	1.30	1.15 each

PUSSY WILLOW (*Salix discolor*). Shrub-like tree with furry catkins in early spring.

	1 to 9 trees	10 to 50 trees
2 to 3 ft.....	\$0.25	\$0.20 each



Catalpa Bungeii (Umbrella Tree)

POPLARS

LOMBARDY POPLAR (*Populus nigra italica*). A tall, spire-like tree used for screens and formal plantings. It is fast growing, distinctly ornamental and beautiful.

	1 to 9 trees	10 to 49 trees	50 to 250 trees
6 to 8 ft....	\$0.70	\$0.60	\$0.50 each
8 to 10 ft....	.90	.80	.70 each
10 to 12 ft..	1.30	1.00	.90 each
12 to 14 ft..	1.75	1.50	1.25 each
14 to 16 ft..	2.25	2.00	1.75 each

OTHER SHADE AND ORNAMENTAL TREES

CATALPA BUNGEII or Umbrella Tree. Umbrella-shaped heads without pruning. Hardy, have large, glossy green leaves; usually planted in pairs on opposite sides of an entrance or walks.



Lombardy Poplar

	1 to 9 trees	10 to 50 trees
5 to 6 ft., 2 yr. heads...	\$1.00	\$0.90 each
6 to 7 ft., 2 yr. heads...	1.25	1.15 each

CUT LEAF WEEPING BIRCH (*Betula pendula gracilis*). Graceful, drooping habit, silver-white bark. 5 to 6 ft., \$3.00 each.

EUROPEAN MOUNTAIN ASH (*Sorbus aucuparia*). Valuable for a small lawn; orange-scarlet berries. 5 to 6 ft., 75c each; 6 to 8 ft., \$1.25 each.

SWEET GUM (*Liquidambar styraciflua*). A shapely tree with slender, corky-ridged branches. Leaves are bright green and lustrous; in autumn they change to a pleasing tone of crimson color. 6 to 8 ft., \$1.50 each; 8 to 10 ft., \$2.25 each; 10 to 12 ft., \$3.00 each; 12 to 14 ft., \$4.00 each.

TEAS WEEPING MULBERRY. Long, sweeping branches that droop and touch the ground; very attractive. 4 to 5 ft. stems, 2 yr. heads, \$2.00 each.

FLOWERING ORNAMENTAL TREES

Garden lovers everywhere are yearly enjoying the beauty and colorful bloom of our selected flowering trees. As a specimen on the lawn or planted in groups to shield an unsightly view, there is nothing quite so enjoyable as planting a few of these trees.

FLOWERING ALMOND. Showy double flowers in spring; a beautiful specimen when in bloom. We can supply it in pink or white. 1 1/2 to 2 ft., 40c each; 2 to 3 ft., 55c each.

FLOWERING CRAB APPLES

Rounded, compact, small trees, largely used in lawn groups and high shrub borders. They are noted for their profuse early bloom of varying colors, their dense glossy handsome foliage, and their ornamental fruits.

Atrosanguinea. Single red flowers, fading to pink, early bloomer.

Bechtel's. The only genuine double-flowered Crab, when in bloom appears to be covered with delicate pink, perfectly double small roses of delicious fragrance.

Eleyi. Purple to red foliage, wine-colored bloom. The best red leaf sort.

Floribunda. A large shrub or small tree with spreading habit. Early pink bloom, yellow fruit slightly tinted red.

Floribunda Purpurea. One of the best, purple foliage and flowers, dark purple fruit. An exceedingly showy variety.

Niedzwetzkyana. Purple foliage, bark tinged with red. Extra large deep pink flowers. Purple fruits.

Scheideckeri. Extremely free flowering, double pink flowers, yellow fruits.

Siberian. Single white fragrant bloom, upright grower.

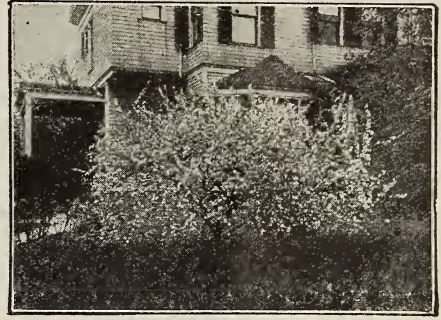
PRICES OF FLOWERING CRAB APPLE TREES

2 to 3 ft.....	\$0.50 each
3 to 4 ft.....	.75 each
4 to 5 ft.....	1.00 each

Japanese Double Flowering Cherry. A profusion of double white blooms in early spring. 4 to 5 ft., \$1.00 each; 5 to 6 ft., \$1.25 each.

Flowering Peach. Very beautiful, large, double blooms in the spring time. The ideal low-priced flowering tree. We can supply the flowering peach in three colors—White, red or pink. 2 to 3 ft., 35c each; 3 to 4 ft., 40c each; 4 to 5 ft., 45c each; 5 to 6 ft.

DOUBLE FLOWERING PLUM (*Prunus triloba plena*). A very hardy and vigorous growing flowering tree. Early in the spring before the leaves appear it is entirely enveloped in a fleecy cloud of double pinkish



Flowering Peach

flowers. Foliage is delicate, making the shrub attractive even after the flowers have disappeared. 2 to 3 ft., 50c each; 3 to 4 ft., 75c each.

PURPLE-LEAVED PLUM (*Prunus pissardi*). One of the most desirable purple-leaved trees. Holds color throughout summer; a fine specimen for bringing color into a shrubby border.

PURPLE-LEAVED OTHELLO PLUM. Upright grower, foliage brilliant, reddish purple, holding its color throughout season. Prolific bearer, with crimson fruit producing ornamental effect.

PRICES ON BOTH VARIETIES PURPLE-LEAVED PLUMS

2 to 3 ft.....	\$0.50 each
3 to 4 ft.....	.55 each
4 to 5 ft.....	.65 each
5 to 6 ft.....	.75 each



Bechtel's Flowering Crab Apple

FLOWERING SHRUBS



Althea—Rose of Sharon

Any house without its setting of shrubbery or flowers is unattractive, and any house, no matter how unattractive it may be, can be made attractive and pleasing with a proper planting. Many people forego the pleasure of a beautiful exterior because it is so expensive that they cannot afford the layout. This year probably offers the best opportunity to purchase shrubs, at low prices. Make your selection from the varieties offered in this catalog, the cost of which is so little in comparison to the floral beauty and satisfaction you will enjoy.

All our shrubs are strong field specimens, and grown under the ideal conditions on the Eastern Shore of Maryland.

ALTHEA OR ROSE OF SHARON (*Hibiscus syriacus*). A tall shrub with upright or slightly spreading branches. The double and single flowers are formed in varying colors. We can supply double red, double white, double pink, double purple, semi-double white with crimson center.

	1 to 9	10 to 50
	shrubs	shrubs

1½ to 2 ft.....	\$0.25	\$0.20 each
2 to 3 ft.....	.35	.30 each

AFRICAN TAMARISK. Feathery, gray-green foliage; effective near water. Thrives at seashore. 1½ to 2 ft., 25c each; 2 to 3 ft., 35c each; 3 to 4 ft., 45c each.

BEAUTY BUSH (*Kolkwitzia amabilis*). Pink tubular flowers, heavy bloomer, hardy; the best new shrub introduced in many years. 1½ to 2 ft., 40c each.

BUTTERFLY BUSH (*Buddleia magnifica*). Bushes grow from 3 to 4 ft. tall and are crowned with long racemes of lilac-colored flowers in mid-summer. Its honeyed fragrance attracts the butterflies. Tops die back during winter. 2 yr. plants, 25c each.

CREPE MYRTLE (*Lagerstroemia indica*). Small, green, glossy leaves; very beautiful snowy flowers during midsummer to fall; noticeable object in any landscape. Not hardy North of

Mason-Dixon line, but most popular Southern shrub. Pink and red varieties. 1½ to 2 ft., \$1.00 each; 2 to 3 ft., \$1.50 each.

DEUTZIAS

Handsome flowered shrubs of low and medium height for the garden or border. The flowers may be cut for house decorations in early summer.

PRIDE OF ROCHESTER. Double white flowers, which are slightly tinged with rose; appear in mid-June. 1½ to 2 ft., 20c each; 2 to 3 ft., 25c each; 3 to 4 ft., 35c each.

SLENDER DEUTZIA (*Deutzia gracilis*). Dwarf grower; white flowers cover the entire plant. For base planting and edging. 12 to 15 in., 25c each; 15 to 18 in., 35c each.

DOGWOODS

Strong growing shrubs, attractive for their wealth of flowers as well as abundant berries, leaf coloring in summer and fall, and their bright colored branches in winter.

GOLDEN TWIG DOGWOOD (*Cornus stolonifera flaviramea*). Dwarf grower, branches are golden in color; most attractive in winter. 1 to 1½ ft., 25c each; 1½ to 2 ft., 35c each.

RED BRANCHED OR CORAL DOGWOOD (*Cornus alba sibirica*). Bright red bark, white flowers, blue fruit; rapid grower; beautiful winter effect. 1½ to 2 ft., 30c each; 2 to 3 ft., 35c each; 3 to 4 ft., 45c each.

RED FLOWERING DOGWOOD (*Cornus florida rubra*). One of the most popular small ornamental trees. Handsome red flowers in early spring. Makes an attractive lawn specimen. 1½ to 2 ft., \$1.00 each.

WHITE FLOWERING DOGWOOD (*Cornus florida*). One of the native spring flowering small trees, with white flowers and bright red berries in fall. 2 to 3 ft., 50c each; 3 to 4 ft., 75c each; 4 to 5 ft., \$1.00 each.

GLOBE FLOWER (*Kerria japonica fl. pl.*). Brilliant double yellow flowers borne on extremely vigorous growing plants. 1½ to 2 ft., 40c each.

FORSYTHIA

GOLDEN BELL (*Forsythia*). Vigorous, upright grower; profusion of yellow flowers in early spring. One of our best early blooming shrubs. 1½ to 2 ft., 25c each; 2 to 3 ft., 30c each; 3 to 4 ft., 35c each.

GOLDEN BELL, WEEPING (*Forsythia suspensa*). Very long, curving branches, superbly adapted to covering arches and trellises; yellow flowers in early spring. 1½ to 2 ft., 30c each; 2 to 3 ft., 40c each.

Easton, Maryland
November 29, 1932

Gentlemen:

Received the Crepe Myrtles and Apricot Tree several weeks ago. They looked good, and I am sure will live.

I certainly do thank you kindly for your action in this matter, and for your letter giving advice about planting.

Will probably have another order for you in the near future.

Very truly yours,

E. MAY WILLIS

BUSH HONEYSUCKLES

The upright honeysuckles have pretty bright flowers, and later showy berries throughout the fall. Should be used in shrub groups.

FRAGRANT HONEYSUCKLE (*Lonicera fragrantissima*). Fragrant white flowers, sometimes bursting into bloom in January. Holds green leaves into winter. 1½ to 2 ft., 25c each.

JAPANESE BUSH HONEYSUCKLE (*Lonicera Morrowi*). Early white flowers, followed by red berries. 1½ to 2 ft., 25c each.

TARTARIAN HONEYSUCKLE (*Lonicera tartarica*). Very attractive in blossom, producing an abundance of flowers followed by red fruit. Endures partial shade. We offer pink and white varieties. 1½ to 2 ft., 25c each; 2 to 3 ft., 30c each.

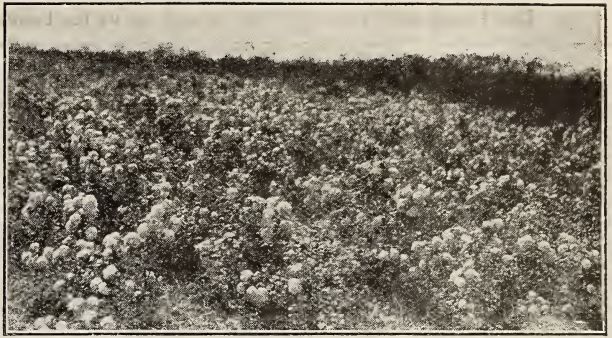
HYDRANGEAS

Among the best and most popular shrubs; valuable for their wealth of late summer blooms. Thrives at seashores as well as other locations.

HYDRANGEA PEE GEE (*Hydrangea paniculata grandiflora*). Large flowers; first snowy white, then pink changing to reddish bronze in the fall. Blooms from middle of summer until fall. Best selling variety of hydrangeas grown. 1½ to 2 ft., 25c each; 2 to 3 ft., 35c each.

HILLS OF SNOW (*Hydrangea arborescens grandiflora*). Huge, dense balls of small white flowers in June and July. Endures partial shade. 1½ to 2 ft., 25c each; 2 to 3 ft., 35c each.

PINK OR BLUE HYDRANGEA (*Hydrangea otaksa*). Old favorite Southern hydrangea. When winters are severe we suggest heeling in. Large balls of pink or blue flowers; very



Hydrangea paniculata grandiflora in the nursery

attractive large leaves. Color depends on acidity of soil. 2 year field grown 50c each.

INDIAN CURRANT OR CORALBERRY (*Symphoricarpos vulgaris*). Dwarf; coral-red berries until late winter; thrives in shade. 1½ to 2 ft., 25c each.

JAPANESE QUINCE (*Cydonia japonica*). Scarlet flowers in April and May. No doubt one of the most attractive spring blooming shrubs. 1½ to 2 ft., 25c each; 2 to 3 ft., 40c each.

LILACS

COMMON LILAC (*Syringa vulgaris*). Old-fashioned variety so familiar in old gardens. We can furnish in either purple or white colors. 1½ to 2 ft., 35c each.

PERSIAN LILAC (*Syringa persica*). A tall-growing shrub with slender branches; bloom in May and June. We offer two colors, white and purple. 1 to 1½ ft., 35c each; 1½ to 2 ft., 45c each.

FRENCH HYBRID LILACS

These named lilacs are marvels of beauty and elegance, far superior to the older varieties. The following varieties are considered to be the very best of their respective colors.

CHARLES X. Single, purplish red flowers.

HUGO KOSTER. Purple flowers, best one of all purple lilacs.

LUDWIG SPAETH. Single, very rich dark purplish red.

MARIE LEGRAYE. Single, best type of white lilac.

MICHAEL BUCHNER. Dwarf, double, beautiful trusses of pale lilac color.

MME. LEMOINE. Double, pure white.

PRESIDENT GREVY. Double, bright blue.

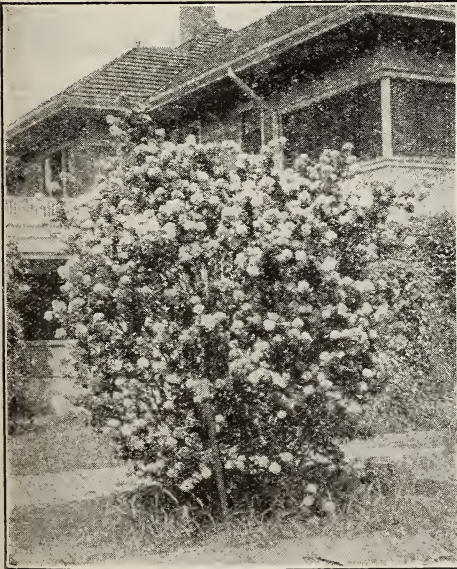
	1 to 9 shrubs	10 to 50 shrubs
1 to 1½ ft.....	\$0.40	\$0.35 each
1½ to 2 ft.....	.50	.45 each

VILLOSA LILAC. Fragrant purplish white blooms; valuable for its lateness of bloom. 1 to 1½ ft., 40c each; 1½ to 2 ft., 50c each.

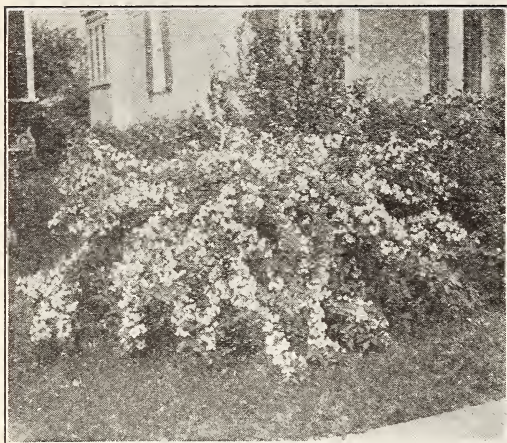
MOCK ORANGE

GARLAND OR SWEET MOCK ORANGE (*Philadelphus coronarius*). Of upright habit, and produces in June a wealth of white fragrant flowers. 1½ to 2 ft., 25c each; 2 to 3 ft., 30c each; 3 to 4 ft., 35c each.

VIRGINAL MOCK ORANGE. Magnificent variety, sweetly fragrant, semi-double white flowers. 1½ to 2 ft., 30c each.



Pink Crepe Myrtle



Pink Weigela (*Weigela rosea*)

SNOWBALLS

COMMON SNOWBALL (*Viburnum opulus sterile*). The old-fashioned snowball; large, globular clusters of snow-white flowers in May and June; makes a very attractive shrub. 1½ to 2 ft., 30c each.

FRAGRANT SNOWBALL (*Viburnum carlesii*). The fragrant, spicy flowers are borne in May and June. Buds before opening are an attractive pink, developing to pure white flowers. 15 to 18 ins., 75c each.

JAPANESE SNOWBALL (*Viburnum tomentosum plicatum*). This is one of the most attractive shrubs grown. Its pure white blossoms, with heavy dark leaves, make it show up remarkably well when planted as a specimen or in a shrub group. 1½ to 2 ft., 45c each.

SNOWBERRY (*Symphoricarpos racemosus*). A slender branched, upright growing shrub, with small pink flowers, followed by showy, pure white berries, which cling to the branches during fall and winter. 1½ to 2 ft., 25c each.

SWEET SCENTED SHRUB OR CAROLINA ALLSPICE (*Calycanthus floridus*). Reddish brown flowers, spicy, fragrant, June to September. 12 to 18 inches, 25c each; 1½ to 2 ft., 35c each.

SPIREAS

ANTHONY WATERER SPIREA. Dwarf grower, bright pink flowers in June and July. Very valuable for edging in front of other shrubbery. 1 to 1½ ft., 25c each.

BILLARDI SPIREA. Long spikes of rose-pink flowers in mid-summer. 1½ to 2 ft., 20c each; 2 to 3 ft., 25c each.

THUNBERG'S SPIREA (*Spirea thunbergii*). White flowers in early spring, against a background of feathery yellowish green foliage. Most attractive. 1½ to 2 ft., 30c each.

VAN HOUTTEI SPIREA. The most popular shrub. It is valuable as a specimen in groups, in border planting and for hedges. The branches are slender, drooping, covered with white flowers in April or early May. It grows six to eight feet,

and is unsurpassed in gracefulness and beauty.

	1 to 9	10 to 50
	shrubs	shrubs
1½ to 2 ft.....	\$0.20	\$0.15 each
2 to 3 ft.....	.25	.20 each

SMOKE TREE OR PURPLE FRINGE (*Rhus cotinus*). The blooms have a peculiar fluffy aspect, and because of the color, which is pale purple, they give the whole tree the appearance of a cloud of smoke. 1½ to 2 ft., 50c each.

WEIGELAS

Beautiful shrubs that bloom in June and July. The flowers are produced in so great profusion that they almost entirely hide the foliage. They are very desirable for border or for grouping, and as specimen plants for the lawn.

EVA RATHKE WEIGELA. Very attractive deep carmine-red flowers, making a very showy shrub. 1½ to 2 ft., 40c each; 2 to 3 ft., 50c each.

PINK WEIGELA (*Weigela rosea*). The most popular Weigela sold today. Its delicate, pink, bell-shaped flowers are borne in great profusion along arching branches. 1½ to 2 ft., 25c each; 2 to 3 ft., 35c each; 3 to 4 ft., 45c each.

WHITE KERRIA OR JETBEAD (*Rhodotypos kerriodes*). Single white flowers in the spring, followed by shining, black-colored berries. 1½ to 2 ft., 40c each.

35 Winthrop St., New Britain, Conn.
April 17, 1933

Dear Sirs:

The shrubs received and I want you to know we are very much pleased, never saw such beautiful specimen plants. We shall recommend your goods.

Very truly,
MRS. FREDERICK H. HILL

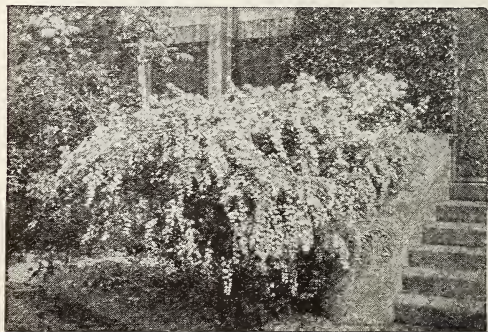
Box 163, Franklin, Mass.
June 5, 1933

Gentlemen:

A short time ago I purchased 300 California Privet hedges and I want to tell you that every one of the 300 plants lived and are growing great.

I want to thank you for your wonderful service and I sure will recommend your nursery stock to my friends.

Yours truly,
RALPH L. WOOD



Spirea Van Houttei

HEDGE PLANTS

Harrison-Grown Hedge Plants for Utility and Beauty

Many people do not realize the value of an attractive hedge and how it will increase the worth of their grounds. A hedge of any of the selected plants listed here will add dollars to the value of your home and make its appearance more charming.

CALIFORNIA PRIVET

This is the universal hedge in the East, a fact proving that Privet has greater merit under ordinary conditions for this purpose than any other plant. For live fences at village, town and country homes it is the very best of all materials. On public grounds of all kinds, in parks and cemeteries, along roads and paths, on factory grounds, and on newly subdivided areas near towns, nothing else can be used in its place, and in this place it is indispensable. It is the best of all hardy hedge plants. Can be easily kept at any height desired; has glossy, deep green leaves, and holds them until late fall. Its strong, quick, upright growth makes it useful for screening out unsightly objects.

	1 to 9 plants	10 to 49 plants	50 to 299 plants	300 to 1000 plants
8 to 12 in..	\$.04	\$.03	\$.02	\$.01½ each
1 to 1½ ft.	.05	.04	.03	.02½ each
1½ to 2 ft...	.07	.05	.04	.03½ each
2 to 3 ft...	.10	.07	.06	.05 each
3 to 4 ft...	.15	.11	.09	.07 each

JAPANESE BARBERRY (*Berberis thunbergi*)

For a low hedge Japanese Barberry stands at the head of the list. The leaves are small, light green, and toward fall turn to various colors which produce a very pleasing aspect. In fall this handsome plant bears a profusion of bright red berries which remain through the winter. This Barberry is without doubt one of the best hedge plants and one that requires no attention, as it can be pruned or not at the owner's discretion. Barberry is absolutely hardy. You need not fear that it will winter-kill at all. It will stand trimming, but does not need it even for wonderfully fine hedges, unless your space is very small. Along a walk, driveway, or even as a boundary hedge Barberry can be used to great advantage, whether you trim it or permit it to grow as nature intended. On account of the dense and horizontal-growing branches, the plants make a thick hedge.

	1 to 9 plants	10 to 49 plants	50 to 299 plants	300 to 1000 plants
12 to 15 in...	\$.015	\$.09	\$.07	\$.06 each
15 to 18 in...	.20	.13	.10	.09 each
1½ to 2 ft....	.25	.18	.14	.12 each



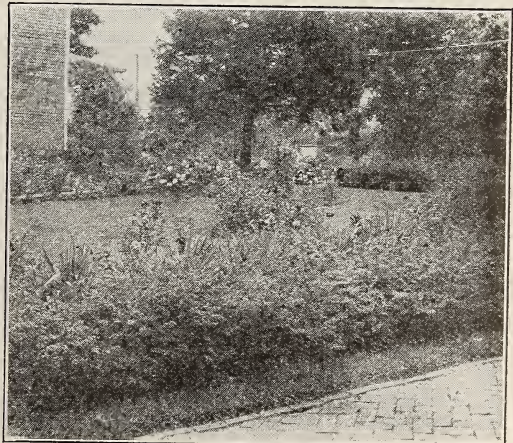
Block of California Privet in the Nursery

RED LEAVED BARBERRY

(*Berberis thunbergi atropurpurea*)

A highly important introduction among shrubs, giving us for the first time a practical easily grown shrub of medium height, with good, distinctly red foliage. This must prove a boon to all types of landscaping, where studied contrasts are to be worked out with the shrub foliage depended on for colors. Red Leaved Barberry is an exact reproduction of the Japanese variety in every way—habit, leaf-formation and fruiting, but—whereas the original is a deep green from spring until fall, this variety starts off in its first foliage a warm bronzy red; the heat of summer intensifying its red brilliancy; autumn adding other tints to its richness. The abundant scarlet berries persist throughout the winter along the spiny twigs. A sunny exposure is necessary to bring out and retain its full red color.

	1 to 9 plants	10 to 49 plants	50 to 300 plants
9 to 12 in.....	\$.28	\$.23	\$.17 each
12 to 15 in.....	.32	.27	.20 each
15 to 18 in.....	.35	.30	.25 each
1½ to 2 ft.....	.40	.35	.30 each
2 to 3 ft.....	.45	.40	.35 each



Hedge of Japanese Barberry

HARRISONS' "SUPREME" ROSES



Bed of Radiance Roses—Best Pink

In all collections of flowering and ornamental shrubs, Roses occupy first place, for among the flowering shrubs that make for beauty and grace, there is none that can compare with the Rose. The wide range of color, shape and size of blooms and the diversity and character of the foliage give it a wider range for decoration than any other single group of plants. When added to these qualifications are ease of culture, quick and ample response in blossoms, it is not to be wondered at that the Rose has been aptly termed the "Queen of Flowers."

All the roses we are offering have been carefully tested in our nurseries and are the finest obtainable. Roses are easy to grow and will give a wealth of bloom the first season. Start your Rose garden now with Harrisons' "Supreme" Roses, all hardy field grown stock.

EVERBLOOMING HYBRID TEAS

This is the class of roses that bloom continuously throughout the season. They can be had in a complete range of color, plant them freely in groups close together, so that a dash of color and fragrance can be had even in the smallest garden.

DUCHESS OF WELLINGTON. Long, tapering bud; very large, fragrant, saffron-yellow flower.

ETOILE DE FRANCE. Of clean red to velvety crimson. Flowers borne on long stems. One of the most charming of red roses.

KAISERIN AUGUSTE VICTORIA. Soft, pearly white color, shading to cream. Most popular white rose.

LOS ANGELES. Luminous, flame-pink color; washed with gold at the base; fragrant.

MME. BUTTERFLY. A harmony of bright pink, apricot and gold.

MME. EDOUARD HERRIOT. Long-pointed, deep, coral-red buds, changing to a pleasing orange pink color.

MRS. AARON WARD. Pointed buds of a rich yellow color, changing to a creamy yellow color after opening.

RADIANCE. Large, fragrant, long-stemmed, brilliant rose-pink flowers; most popular pink rose in America.

RED RADIANCE. Identical with Radiance, except flowers are of a deep red color.

SOUV. DE CLAUDIUS PERNET. Long-pointed buds; large, full flowers of a most striking sunflower yellow.

TALISMAN. Brilliant red and gold buds, opening to well shaped blooms of scarlet orange and rich yellow. Constantly in bloom; the most vivid color yet produced in roses.

Prices of All Varieties of Field-grown Two-year Budded First-class Everblooming Hybrid Tea Roses.

45c each \$4.00 per 10
\$35.00 per 100

HYBRID PERPETUAL OR JUNE ROSES

Of recent years the everblooming roses have been planted to a greater extent than the June roses. These roses get their name from the time which they bloom, which is generally in June. The flowers of this class of roses are large to extremely large and are very much easier to grow than the everblooming type. Most of the varieties of this class will bloom during the late summer in this vicinity.

FRAU KARL DRUSCKI. This is the ideal hardy white rose; pure in color, perfect in form, strong grower and remarkably free flowering; superb in every way.

MAGNA CHARTA. A rosy pink, full rounded globular rose of marked fragrance. Profuse bloomer, valuable for cutting.

MRS. JOHN LAING. Soft pink, beautiful formed large double blooms, borne on long stems. Free bloomer.

ULRICH BRUNNER. Brilliant scarlet—crimson; an old favorite and one of the best known roses in cultivation, does well everywhere.

Prices of All Varieties of Field-grown Two-year Budded First-class Hybrid Perpetual Roses.

45c each \$4.00 per 10 \$35.00 per 100



Kaiserin Auguste Victoria—Best White

CLIMBING AND RAMBLER ROSES

There are so many uses for Climbing and Rambler roses that they should be given serious consideration in your planting. Aside from the fact that they produce a wealth of bloom during May and June their foliage and growth make them much more attractive than many other vines that are used in plantings. Order a few this year to train on posts, fences or against walls. The beauty of their bloom and foliage will repay you many times.

AMERICAN PILLAR. Large clusters of single rosy pink flowers, with yellow shadings.

BABY RAMBLER. Dwarf grower; clusters of crimson flowers.

CLIMBING AMERICAN BEAUTY. Large, rosy crimson blooms. One of the best climbing roses.

DOROTHY PERKINS. Full, double, shell-pink flowers in large clusters; very attractive.

DR. W. VAN FLEET. Light, shell-pink to silver flesh-color blooms; double.

GARDENIA. Small yellow buds, opening to creamy white; very fragrant.

MARY WALLACE. Semi-double, rose-pink blooms; salmon at base of petals; most attractive.

PAUL'S SCARLET CLIMBER. Large intense scarlet-colored blooms; freely produced. It is strong, and perfectly hardy. The most popular climbing rose.

Prices of All Varieties of Field-grown Two-year Budded or Own Root, First-class Climbing and Rambler Roses

40c each \$3.50 per 10 \$30.00 per 100



Red Radiance—Best Red

How to Plant Roses

Roses thrive best in a medium light, clay soil. Before planting prepare the soil by spading and thoroughly working over to a depth of about 18 inches, fill in well-rotted stable manure while spading and work it carefully into the soil. After the plants are set, for best results cut all branches back to within 3 or 4 inches of the top of the ground. The new growth coming out will make a much nicer head than if the plants were not pruned, and the bushes will bloom all the better.

SELECTED HARDY PERENNIALS

Because they bloom year after year, Harrison's perennials are the choice of home owners everywhere. From the varieties listed here you can get a continuous succession of colorful bloom from early Spring until late Fall.

COREOPSIS GRANDIFLORA. Large bright yellow flowers, one of the best hardy plants, excellent for cut flowers all summer.

CHRYSANTHEMUM MAXIM (Shasta Daisy). Handsome plant, with large glistening white blossoms in June and July.

DIANTHUS PLUMARIS (Hardy Pinks). Rose pink and white fragrant flowers on long spikes, handsome glaucous green foliage. Will bloom continuously if flowers are cut off when they begin to fade.

DELPHINIUM BELLADONNA. Large spikes of sky blue flowers, June until frost.

DELPHINIUM BELLAMOSUM. Large spikes of deep rich blue flowers, bloom from June until frost.

DICENTRA SPECTABILIS (Bleeding Heart). Long racemes of graceful heart shaped pink flowers are always attractive; early spring. 35c each.

GALLIARDI GRANDIFLORA (Blanket Flower). Large flowers yellow and orange red. Early summer to November.

GYPSOPHILA (Baby Breath). A cloud of misty, white miniature blooms cover the tiny branches of this dainty plant.

MYTOSIS PALUSTRIS (Forget-Me-Not). Delicate, tufted foliage, plants laden with exquisite little flowerets, blooming in June. Mixed colors of white, blue and pink.

PHLOX. Great trusses of waxy, gorgeously colored flowers that last the summer through. One of the grandest of all perennials for the border, they will give a lot of color and finish at the foreground of a shrubbery or evergreen group.

B. Compte—A rich satiny purplish red

Fuerbrand—Brilliant orange scarlet

Mia Ruys—Pure white, good grower

Rynstroom—Charming rose pink

Thor—Deep salmon—pink with scarlet glow

PHLOX SUBULATA. A dwarf early spring flowering type with pretty moss like evergreen foliage, which during April and May is hidden under a mass of bloom. White or pink.

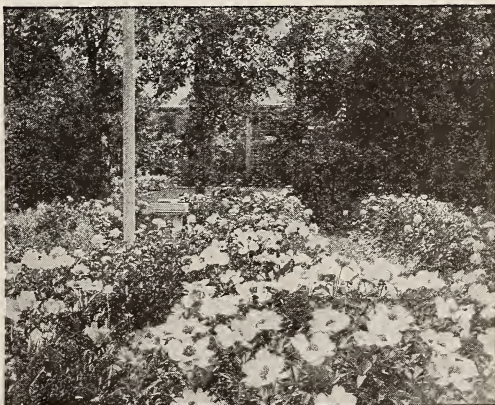
SEDUM DWARF. The very finest sort of plants for the rock garden. Hardy and very easy to establish. Dwarf and spreading with thick waxy foliage that is always attractive. Album—Thick waxy, round foliage and white flowers.

Spectabile—Broad light green foliage, handsome, showy rose colored flowers, late fall bloomer. Stolonifera—Purplish pink flowers.

TRITOMA PFITZERI (Red Hot Poker). Long red blooms, resembling a red hot poker, blooms from August to October.

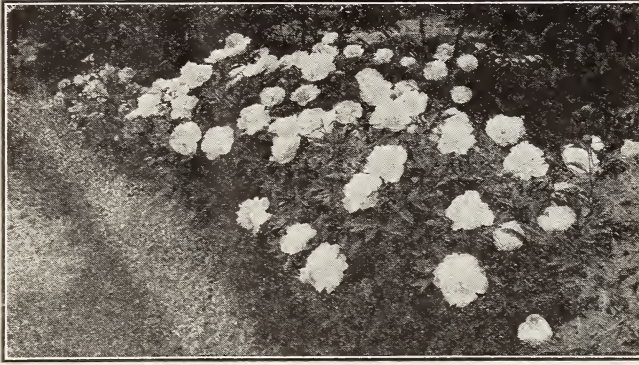
Prices of All Varieties of Perennials Unless Otherwise Noted

20c each \$1.50 for 10



Bed of Perennials

HARRISONS' PEONIES



Bed of Peonies

The Peony with all of its perfection of form and beauty of coloring has quickly progressed from obscurity to a preeminence second only to the rose. The peony flowers during late May and June, its blooms are very lasting when cut and in most cases are exquisitely scented. Plant peonies during the fall or spring, fall being the best time. Peonies should be planted 2 to 3 ft. apart in deep, rich, well-prepared soil, covering the buds with about one to two inches of soil. Do not expect much of them the first year, as they are slow in establishing themselves.

Prices on strong 3 to 5 eye divisions on peonies unless otherwise noted—30c each; 10 for \$2.50; 100 for \$20.00. Mixed Color Peonies—25c each; 10 for \$2.00; 100 for \$15.00.

SELECTED VARIETIES

ALEXANDER DUMAS. Crown type; early. Brilliant pink center interspersed with white, salmon and chamois, creamy white collar, very floriferous.

AURORE. Lilac white flowers, semi-rose type. Late bloomer.

AVALANCHE. Pure snow white, with a few delicate pencillings of carmine on edge of central petals. Fragrant.

BARONESS SCHROEDER. Very large globular rose type. Flesh white, fading to milk white; fragrant. Tall, strong grower, free bloomer. One of the finest peonies. 50c each.

DELACHEI. Very large cup-shaped bloom, dark velvety crimson-purple, extra fine late variety.

DUC DE WELLINGTON. Late midseason bomb type, white with sulphur center.

DUCHESS DE NEMOURS. Large and full, very fine form. Best commercial white, uniquely tinged with sulphur.

EDULIS SUPERBA. Very large bloom of perfect shape, fine brilliant pink shaded violet, intermixed with narrow whitish petals.

FELIX CROUSSE. A very superior red. Large and globular, a typical bomb. Brilliant ruby-red; sweet fragrance. Strong vigorous grower and a free bloomer. Should be in every garden.

FESTIVA MAXIMA. Probably the most popular white peony ever introduced. An enormous bloom, snow white shading to cream at base with occasional red tip on center petals. Delightfully fragrant.

GERMAINE BIGOT. Very large, medium compact, flat crown type. Pale lilac-rose, center prominently flecked crimson. Strong erect grower. Midseason.

JEANNE D'ARC. Large crown type flower, with guards and center soft pink, and a collar of intermingled petals of pink-salmon and yellow color that makes a beautiful effect. Midseason.

LA PERLE. A truly fine peony. The flowers are very large, globular, compact, rose type. The broad outer petals are delicate lilac-white, the center petals a flecked crimson. Very fragrant. Late midseason. 50c each.

LA ROSIERE. A beautiful midseason white of distinct form. Large semi-double, white petals sur-

rounding a disc-like center of bright golden yellow stamens.

MADAME DUCEL. Large globular light mauve-rose with silvery reflex; fragrant. Strong grower, free bloomer. 40c each.

MADAME DE VERNEVILLE. Beautiful formed flower, very broad sulphur-white guard petals, very compact center, delicate rosy white touched, carmine; a grand variety.

MADAME GEISSLER. Very large imbricated bloom, glossy silvery pink, edged white, deliciously fragrant. A superb variety. 40c each.

MARECHAL VAILLANT. One of the largest red varieties. Late bloomer.

MARGUERITE GERARD. Pink flowers changing to creamy white, central petals minutely flecked dark carmine. A free bloomer in late midseason. 40c each.

MONSIEUR DUPONT. Large flat semi-rose type flower. The well-formed cup-shaped bloom is cream white, with the center petals conspicuously splashed crimson. Vigorous free bloomer, midseason. 50c each.

MARIE LEMOINE. Dwarf, extra late, and very choice in the bud. Wonderful flower of large, very compact rose form. Flower is pure white shading to cream color with carmine stripes on occasional petals; fragrant.

PHILOMELE. Crown type. Medium size. Center violet-rose with amber-yellow anemone center changing to cream; fragrant; midseason. 40c each.

PRESIDENT ROOSEVELT. A desirable peony with a distinct shade of brilliant dark red medium size bloom. Midseason.

SARAH BERNHARDT. A prize winner everywhere. Large, double full blooms of a melting apple-blossom pink, lightly tipped with silver; sweetly fragrant. One of the largest and finest pink peonies grown. Late midseason bloomer. 75c each.

UMBELLATA ROSEA. Earliest light pink, fragrant and fine. Strong and vigorous growth, free bloomer. 40c each.



Festiva Maxima Peony

VINES FOR CREEPING AND CLIMBING

Ornamental vines provide shade for porches, pergolas, and arbors. As screens they contribute privacy. As wall coverings they lend a dignified homelike permanent atmosphere to a place, and screen unsightly places that mar the beauty surrounding your home.

BOSTON OR JAPANESE IVY (*Ampelopsis veitchii*). A popular climber, clinging firmly to brick, stone or other material. Deep, glossy, green, ivy-shaped foliage which turns to cream and gold color in autumn. Strong 2 year plants, 30c each; \$2.50 per 10 plants.

HYBRID CLEMATIS

These are improved clematis of the large flowering type. Every home should have some.

HENRY CLEMATIS. Large, waxy, pure white flowers.

JACKMANI CLEMATIS. Large, velvet, purple blooms in June and July.



English Ivy



Sweet Autumn Clematis

MME. EDOUARD ANDRE CLEMATIS. Large flowers of unusual red color. Strong 2 year plants, 70c each; \$6.50 per 10.

SWEET AUTUMN CLEMATIS (*Clematis paniculata*). A splendid climber for covering porches and trellises. Flowers snowy white; produced in immense quantities during late summer and autumn. Strong 2 year plants 40c each; \$3.50 per 10.

CHINESE WISTERIA. A rampant growing, clinging vine. Blue flowers in large drooping clusters during May and June. Strong 2 year plants, 40c each; \$3.50 per 10.

DUTCHMAN'S PIPE (*Aristolochia siphon*). Large heart-shaped leaves and quaint pipe-shaped green flowers. Strong 2 year plants 50c each.

ENGLISH IVY (*Hedera helix*). The most popular evergreen vine; large, deep, green glossy foliage. Excellent for covering walls. Useful for shady locations. 2 year plants, 30c each; \$2.50 per 10.

HALL'S JAPANESE HONEYSUCKLE. Dark, glossy green foliage; fragrant flowers from July to fall. Strong 2 year plants, 30c each; \$2.50 per 10.

JAPANESE SPURGE (*Pachysandra terminalis*). Valuable evergreen ground cover. Will endure complete shade; very useful for planting under trees and other places where grass will not grow. Strong plants, 25c each; \$2.00 per 10.

WINTER JASMINE (*Jasminum nudiflorum*). Yellow blooms in early spring; makes a very showy plant for planting on slopes or against fences. Strong 2 year plants, 25c each; \$2.00 per 10.

Our Liberal Guarantee

notify us at once should there be any error and the same will be promptly corrected. Also notify the transportation company should stock appear to have been damaged in transit. We do not guarantee continued growth. A tree, shrub, or plant is a living organism—it breathes, drinks and feeds and is liable to attacks of disease and insects after being transplanted to the customer's grounds. Our selling prices are very low and we cannot guarantee growth or be responsible for the nursery stock after delivery to our customers in good condition.

Non-Warranty

In the event that any nursery stock sold by us should prove untrue to name under which it is sold, we hereby agree, on proper proof of such untruthfulness to name to replace the original order or to refund the purchase price. Except for such liability, and in respect to all nursery stock sold by us, we give no warranty, expressed or implied, as to description, quality, productiveness or any other matter.

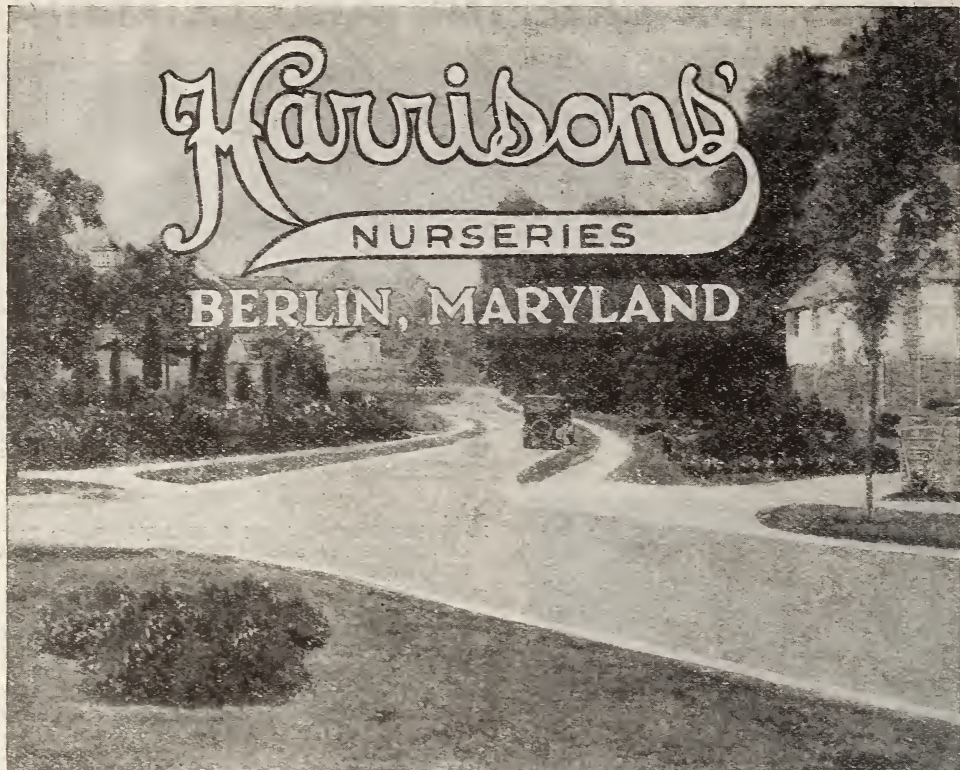
TERMS: F. O. B. BERLIN, WORCESTER COUNTY, MARYLAND

We allow 5% discount for cash with order or prior to date of shipment
OTHERWISE TERMS NET

Harrison's

NURSERIES

BERLIN, MARYLAND



NURSERYMAN-ORCHARD