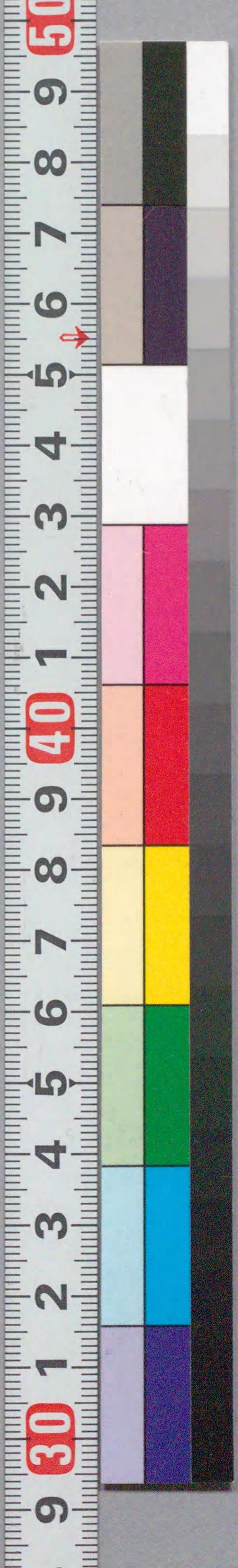


国立国会図書館 新研十六武蔵坊：3巻 207-590



ガラス使用



新研十六武蔵坊
馬琴作
合三冊

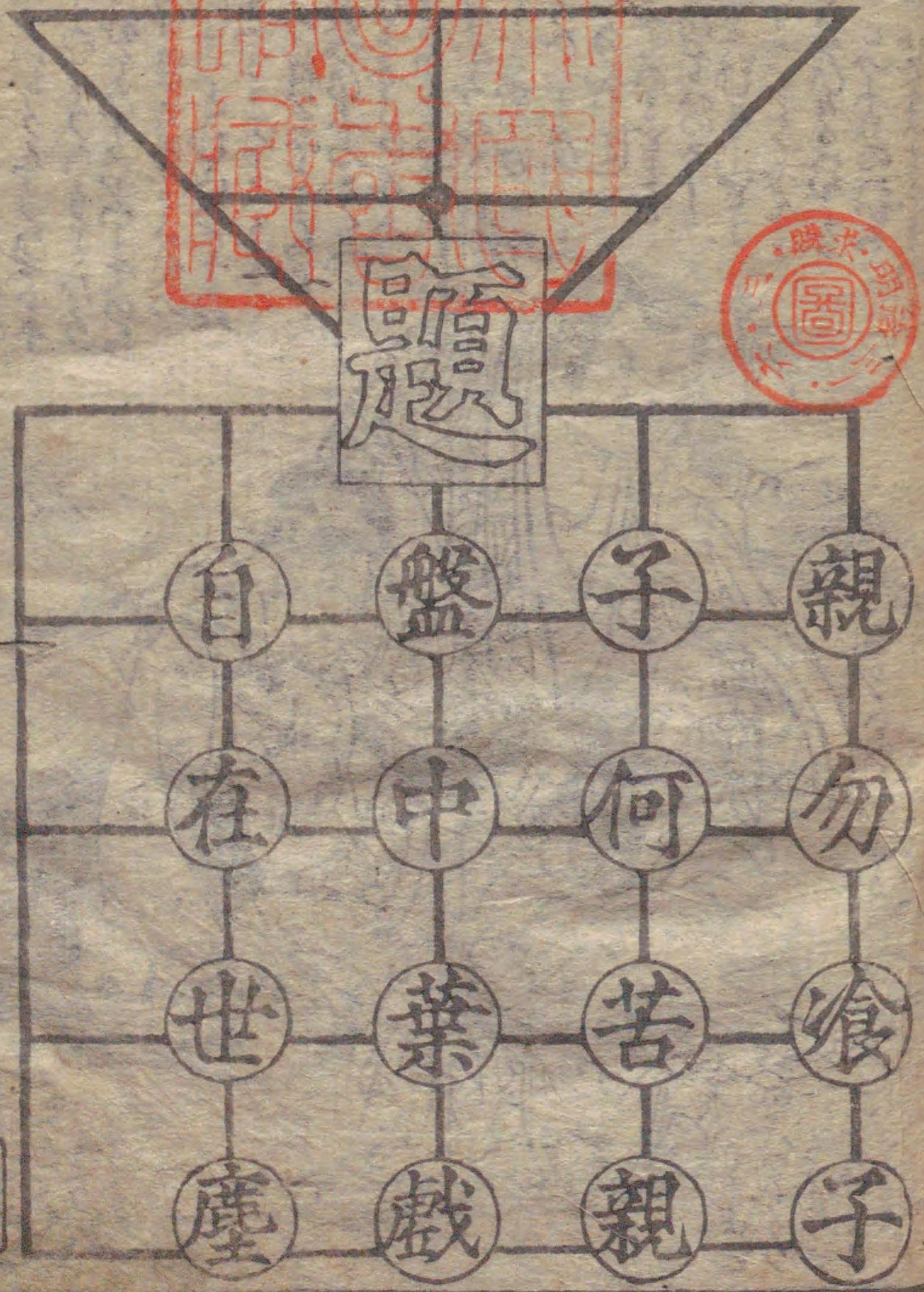
207
590

矢代瓦

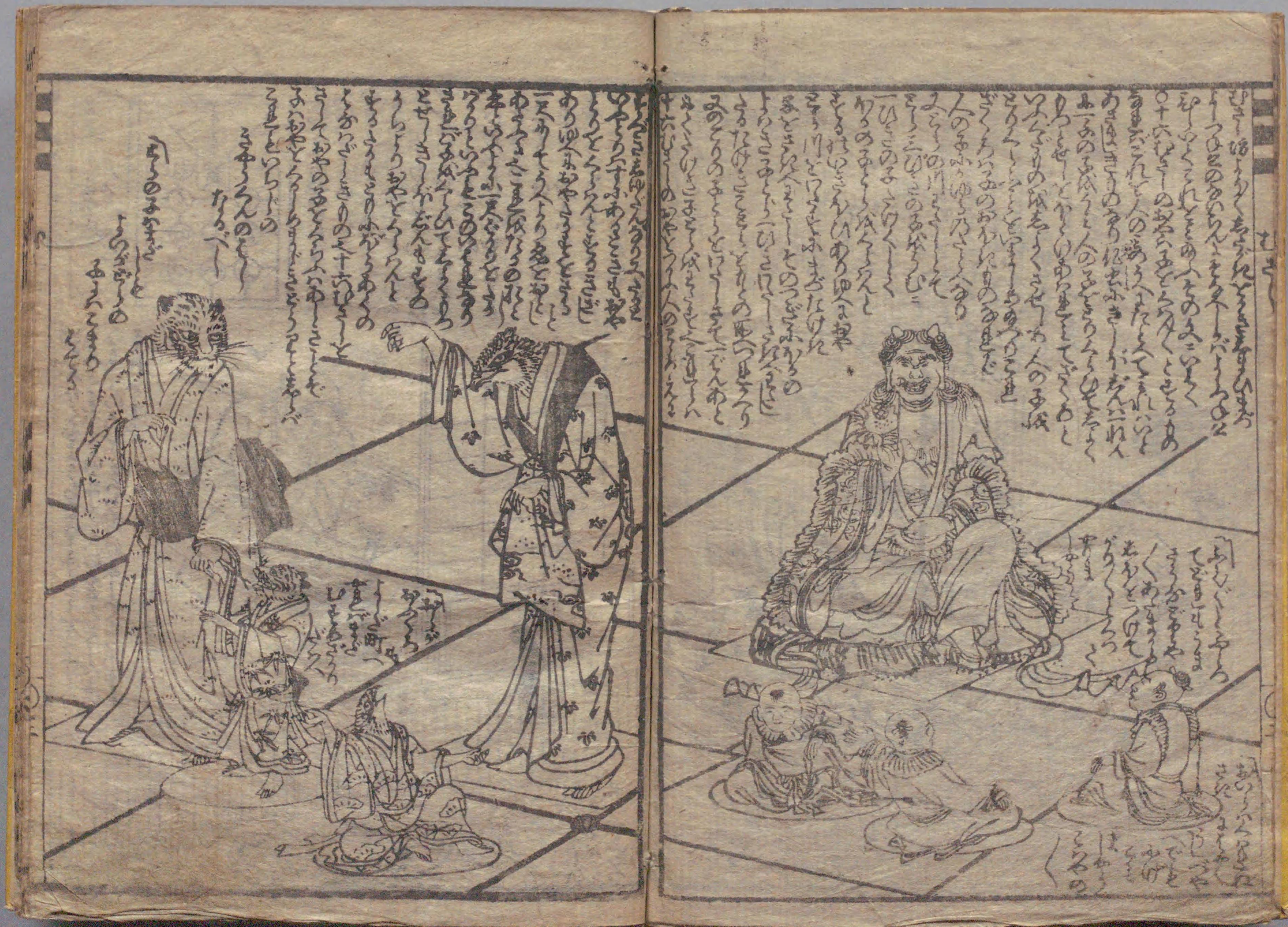


新研十六武蔵坊藏

享和上元甲子正月著作堂馬琴記











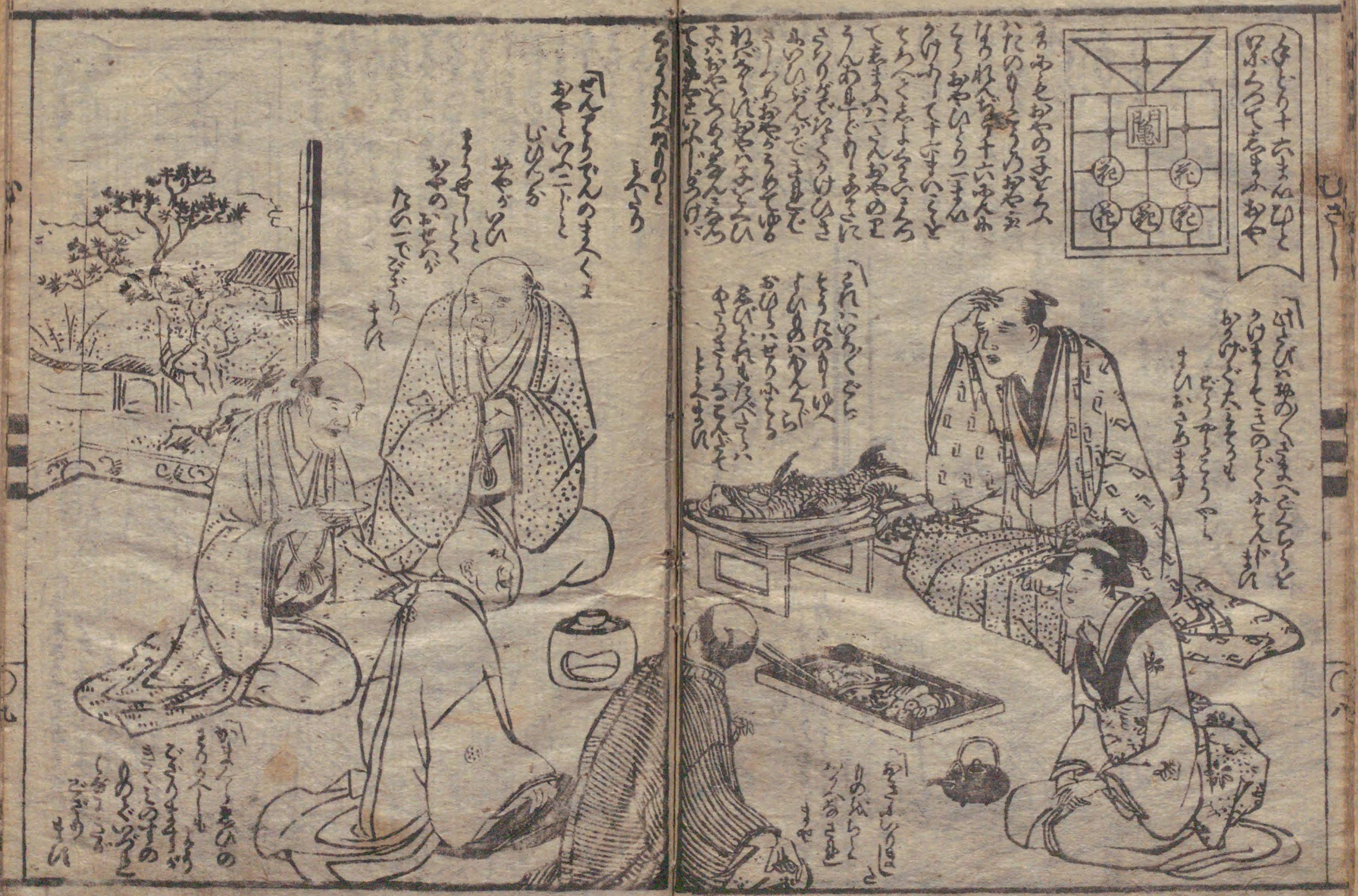
まどだふしやうく
 くんとふいさあや
 色
 う
 こ
 こ

二八佳人體似酥腰間伏削
 軒窓夫執然不見人頭落
 暗裡教君骨髓枯

月ふらふらと諸君は
 つひわらび揚族と
 まろこのいびあやうと

調





Handwritten text in the upper left section of the left page, including a small illustration of a boat with figures.

Handwritten text in the lower left section of the left page.

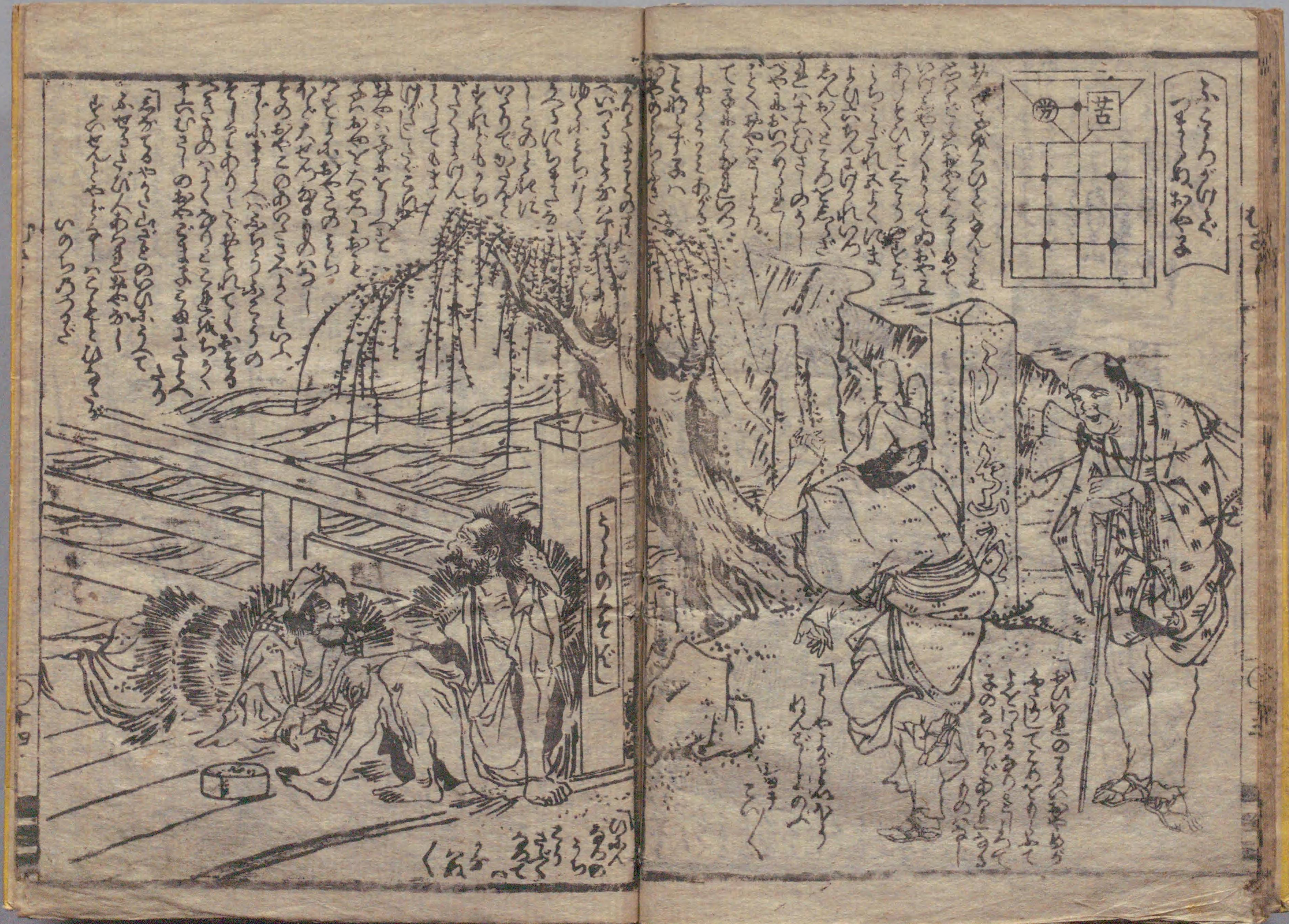


Handwritten text in the upper right section of the right page, including a small diagram with circles and lines.

Handwritten text in the lower right section of the right page, including a small illustration of a seated figure.



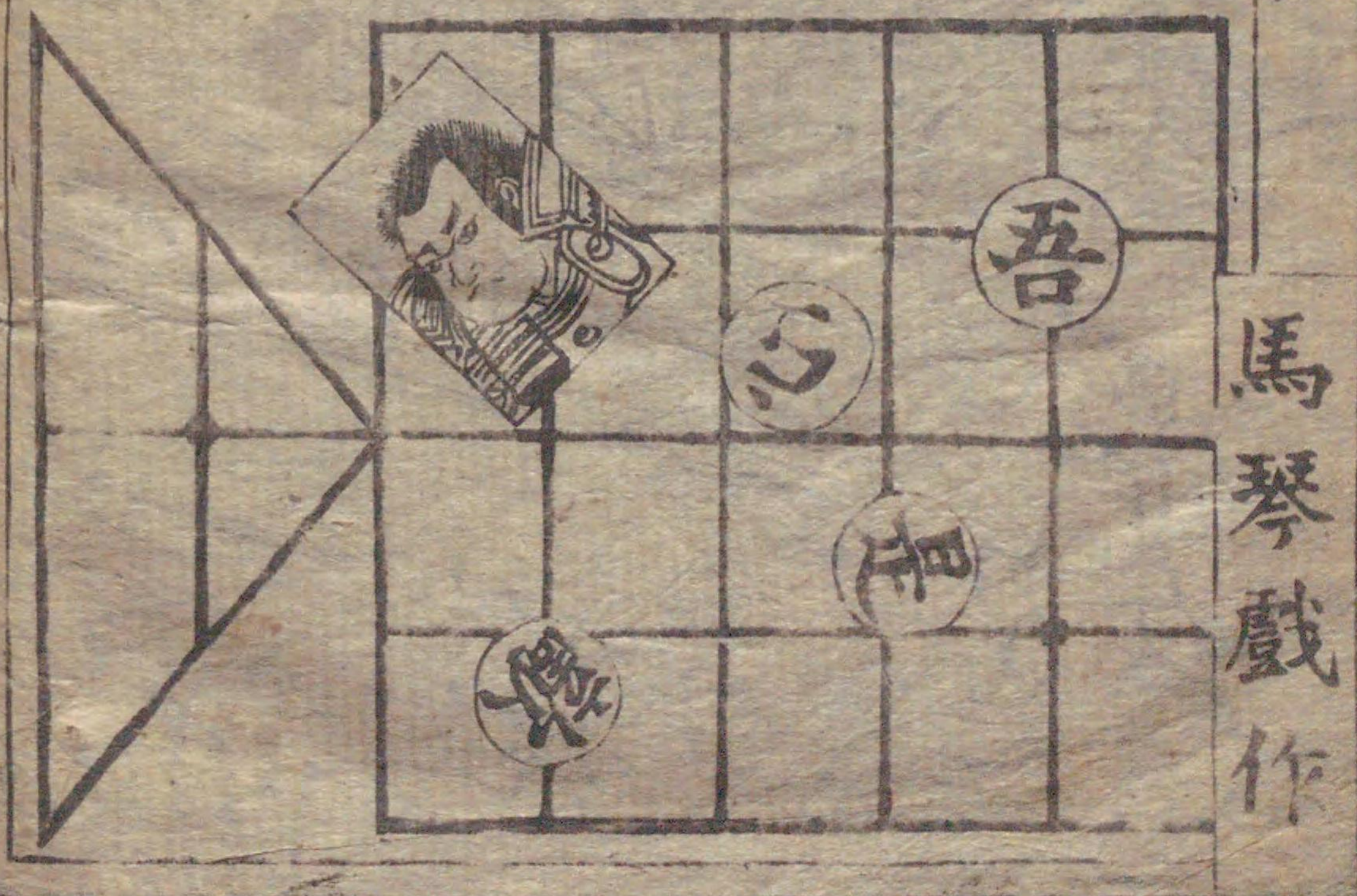


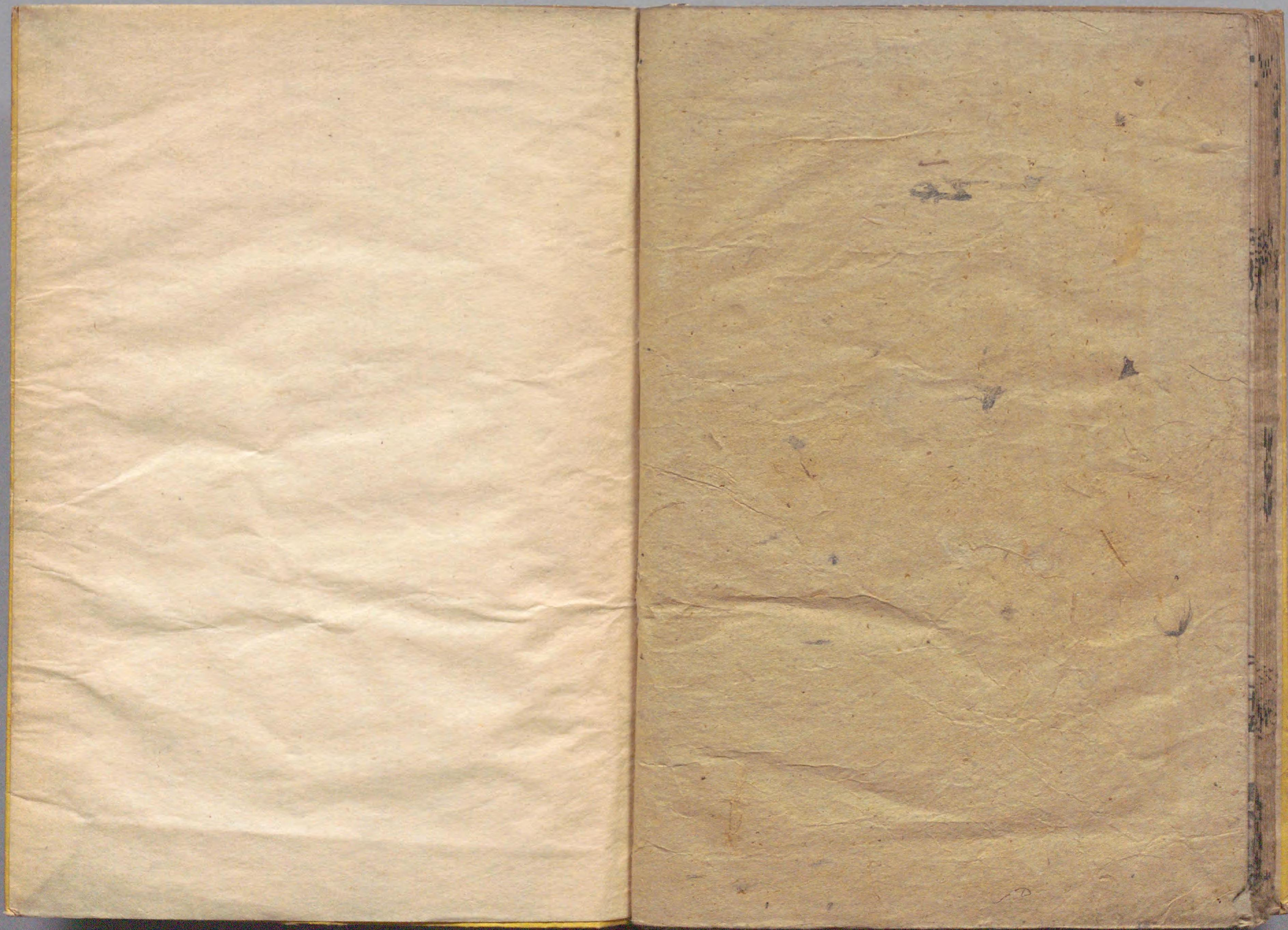
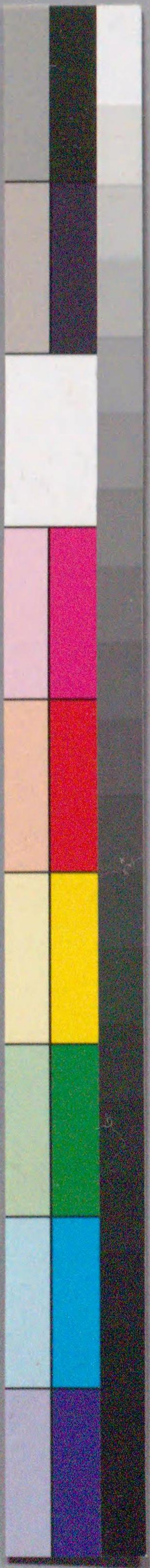




207
590

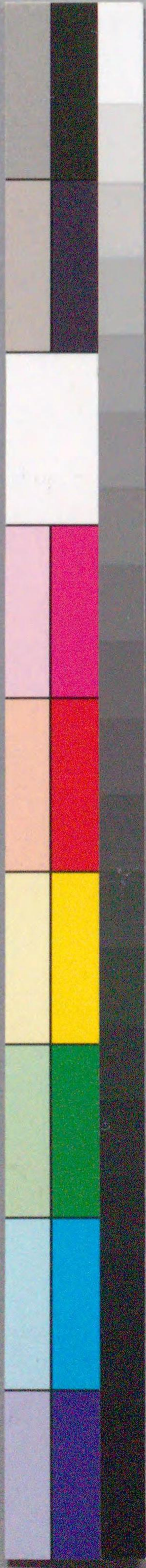
Handwritten text in a cursive script, likely a list of items or a technical description. The text is arranged in several columns and includes various characters and symbols.





国立国会図書館 新研十六武蔵坊：3巻 207-590

ガラス使用



国立国会図書館 新研十六武蔵坊：3巻 207-590

ガラス使用

